



Universiteit
Leiden
The Netherlands

Carbonyl reductase 1 catalyzes 20 beta-reduction of glucocorticoids, modulating receptor activation and metabolic complications of obesity

Morgan, R.A.; Beck, K.R.; Nixon, M.; Homer, N.Z.M.; Crawford, A.A.; Melchers, D.; ... ; Walker, B.R.

Citation

Morgan, R. A., Beck, K. R., Nixon, M., Homer, N. Z. M., Crawford, A. A., Melchers, D., ... Walker, B. R. (2017). Carbonyl reductase 1 catalyzes 20 beta-reduction of glucocorticoids, modulating receptor activation and metabolic complications of obesity. *Scientific Reports*, 7. doi:10.1038/s41598-017-10410-1

Version: Not Applicable (or Unknown)
License: [Leiden University Non-exclusive license](#)
Downloaded from: <https://hdl.handle.net/1887/94842>

Note: To cite this publication please use the final published version (if applicable).

SCIENTIFIC REPORTS



OPEN

Carbonyl reductase 1 catalyzes 20 β -reduction of glucocorticoids, modulating receptor activation and metabolic complications of obesity

Ruth A. Morgan^{1,2}, Katharina R. Beck³, Mark Nixon¹, Natalie Z. M. Homer⁴, Andrew A. Crawford^{1,5}, Diana Melchers⁶, René Houtman⁶, Onno C. Meijer⁷, Andreas Stomby⁸, Anna J. Anderson¹, Rita Upreti¹, Roland H. Stimson¹, Tommy Olsson⁸, Tom Michael⁹, Ariella Cohain¹⁰, Arno Ruusalepp^{11,12,13}, Eric E. Schadt¹⁰, Johan L. M. Björkegren^{10,11,12,13,14}, Ruth Andrew^{1,4}, Christopher J. Kenyon¹, Patrick W. F. Hadoke¹, Alex Odermatt³, John A. Keen² & Brian R. Walker^{1,4}

Carbonyl Reductase 1 (CBR1) is a ubiquitously expressed cytosolic enzyme important in exogenous drug metabolism but the physiological function of which is unknown. Here, we describe a role for CBR1 in metabolism of glucocorticoids. CBR1 catalyzes the NADPH- dependent production of 20 β -dihydrocortisol (20 β -DHF) from cortisol. CBR1 provides the major route of cortisol metabolism in horses and is up-regulated in adipose tissue in obesity in horses, humans and mice. We demonstrate that 20 β -DHF is a weak endogenous agonist of the human glucocorticoid receptor (GR). Pharmacological inhibition of CBR1 in diet-induced obesity in mice results in more marked glucose intolerance with evidence for enhanced hepatic GR signaling. These findings suggest that CBR1 generating 20 β -dihydrocortisol is a novel pathway modulating GR activation and providing enzymatic protection against excessive GR activation in obesity.

Carbonyl reductase 1 is a member of the short chain dehydrogenase/reductase family and is most commonly studied for its role in exogenous drug metabolism, particularly the conversion of chemotherapeutic drug doxorubicin to cardiotoxic danorubicin^{1,2}. Significant effort has gone into developing inhibitors of this enzyme which could be administered as an adjunct to doxorubicin therapy and thus reduce cardiac side effects³⁻⁵. There is also marked biological variation in expression of the CBR1 protein between ethnicities⁶ and following exposure to environmental agents such as cigarette smoke⁷ and flavonoids⁸. However the physiological role of this enzyme is unknown. Here we describe a novel role for CBR1 in glucocorticoid metabolism.

Glucocorticoids act through ubiquitous glucocorticoid receptors (GR) and cell-specific mineralocorticoid receptors (MR) to modulate, for example, fuel metabolism, inflammation and salt and water balance. Plasma

¹University/BHF Centre for Cardiovascular Science, The Queen's Medical Research Institute, University of Edinburgh, Edinburgh, UK. ²Royal (Dick) School of Veterinary Studies, University of Edinburgh, Edinburgh, UK. ³Division of Molecular and Systems Toxicology, Department of Pharmaceutical Sciences, University of Basel, Basel, Switzerland. ⁴Mass Spectrometry Core Laboratory, Wellcome Trust Clinical Research Facility, The Queen's Medical Research Institute, University of Edinburgh, Edinburgh, UK. ⁵School of Social and Community Medicine, University of Bristol, Bristol, UK. ⁶PamGene International, Den Bosch, The Netherlands. ⁷Department of Internal Medicine, Division Endocrinology, Leiden University Medical Center, Leiden, The Netherlands. ⁸Department of Public Health and Clinical Medicine, Umeå University, 901 87, Umeå, Sweden. ⁹The Roslin Institute, University of Edinburgh, Easter Bush Campus, Edinburgh, UK. ¹⁰Department of Genetics and Genomic Sciences, Icahn Institute for Genomics and Multiscale Biology, Icahn School of Medicine at Mount Sinai, New York, USA. ¹¹Department of Physiology, Institute of Biomedicine and Translation Medicine, University of Tartu, Tartu, Estonia. ¹²Clinical Gene Networks AB, Stockholm, Sweden. ¹³Department of Cardiac Surgery, Tartu University Hospital, Tartu, Estonia. ¹⁴Integrated Cardio Metabolic Centre, Department of Medicine, Karolinska Institute, Stockholm, Sweden. Correspondence and requests for materials should be addressed to R.A.M. (email: ruth.morgan@ed.ac.uk)

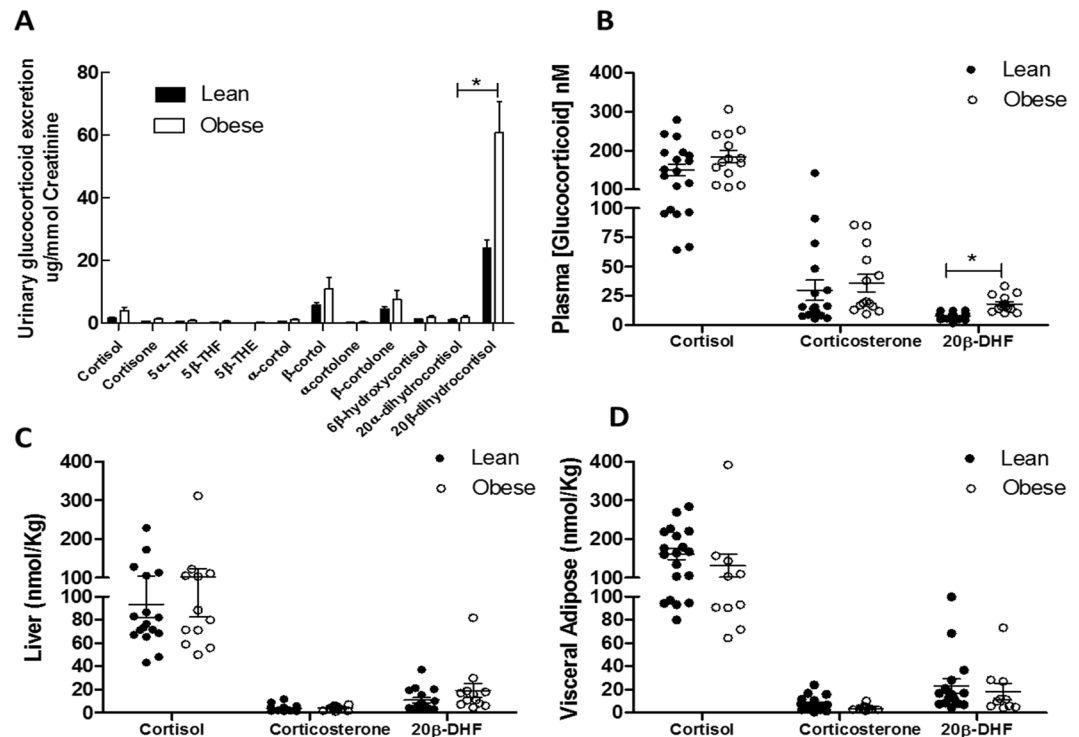


Figure 1. 20 β -Dihydrocortisol (20 β -DHF) is an abundant cortisol metabolite which is increased in plasma and urine of obese horses. **(A)** Obese horses excreted significantly more urinary β -cortol, β -cortolone and 20 β -DHF than lean horses as measured by GC-MS/MS. **(B)** Plasma 20 β -DHF concentrations were significantly higher in obese horses compared to lean horses. **(C)** Hepatic 20 β -DHF concentrations did not differ between lean and obese horses. **(D)** Visceral adipose 20 β -DHF concentrations did not differ between lean and obese horses. Data are mean \pm SEM, $n = 14/\text{group}$, * $P < 0/05$.

glucocorticoid concentrations are controlled by the hypothalamic-pituitary-adrenal axis, which balances adrenal secretion of glucocorticoids against their clearance from the circulation by intracellular enzymes, predominantly active in the liver and kidney. These enzymes also modulate intracellular glucocorticoid concentrations independently of plasma concentrations, thereby conferring tissue-specific control of GR and MR activation. For example, in mineralocorticoid-responsive tissues such as the kidney and colon, MR are protected from exposure to the high-affinity ligand cortisol by 11 β -hydroxysteroid dehydrogenase type 2 (11 β -HSD2)⁹, which converts cortisol to inert cortisone; inhibition of 11 β -HSD2 results in cortisol-dependent excessive MR activation and hypertension. In contrast, in glucocorticoid-responsive tissues such as liver and adipose, cortisol is regenerated from cortisone by 11 β -HSD type 1 (11 β -HSD1) thereby amplifying GR activation¹⁰; inhibition of 11 β -HSD1 improves glucose tolerance in patients with type 2 diabetes¹¹. Further modulation of receptor activation may be conferred by generation of glucocorticoid metabolites which retain activity at corticosteroid receptors. For example, hepatic 5 α -reduction is the predominant clearance pathway for cortisol in humans but the product of this pathway, 5 α -tetrahydrocortisol (5 α -THF), is a selective GR modulator which may contribute to anti-inflammatory signaling¹²; inhibition of 5 α -reductase type 1 results in glucose intolerance and liver fat accumulation, likely due to increased cortisol action in liver or skeletal muscle¹³. In humans and in rodent models, obesity is associated with tissue-specific dysregulation of cortisol metabolism, for example increased 5 α -reductase activity and altered 11 β -HSD1 activity¹⁴.

We embarked on an investigation of cortisol metabolism in domesticated horses, for whom obesity is a growing problem¹⁵ and discovered that the predominant metabolite of cortisol (F) in this species is 20 β -dihydrocortisol (20 β -DHF), which is increased in obesity. 20 β -DHF has previously been identified in equine¹⁶ and human¹⁷ urine. Increased urinary excretion of 20 β -DHF has been associated with Cushing's disease¹⁸ and hypertension¹⁹ in humans. In this study we: dissected pathway producing 20 β -DHF in horses, humans and mice; documented the enzyme responsible as carbonyl reductase 1 (CBR1); discovered that 20 β -DHF modulates GR; and demonstrated the metabolic consequences of inhibiting CBR1.

Results

20 β -Dihydrocortisol is a metabolite of cortisol in horses and humans and its urinary excretion is increased in obesity. Urine, blood and tissue were collected from healthy ($n = 14$) and obese ($n = 14$) horses at post-mortem (see Supplementary Table S1 for clinical characteristics). Glucocorticoids were extracted and quantified using GC-MS/MS (urine) or LC-MS/MS (tissue and plasma). 20 β -DHF accounted for approximately 60% of total glucocorticoid metabolite urinary excretion in healthy horses, and was increased in obese horses (Fig. 1A). Plasma 20 β -DHF, but not cortisol, concentrations were also increased in obese horses (Fig. 1B). In

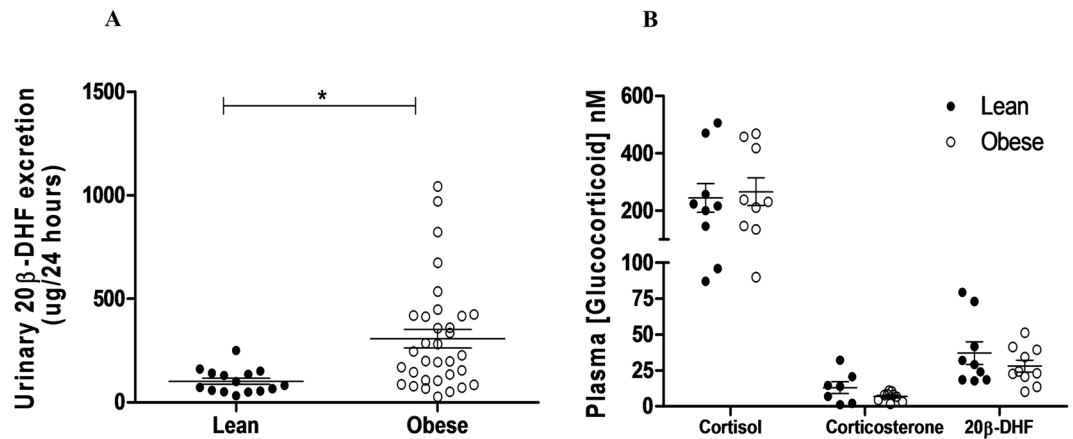


Figure 2. Urinary 20 β -DHF is detectable in human urine and increased in obesity. (A) Obese (BMI >25, n = 37) humans excrete 20 β -DHF at higher levels than lean (BMI <25, n = 15) humans. (B) 20 β -DHF is readily detectable in human plasma but concentrations are not altered in obesity (n = 10/group). Plasma cortisol and corticosterone were not different between the groups. Data are mean \pm SEM, *P < 0/05.

visceral adipose tissue and liver, cortisol and 20 β -DHF concentrations were measurable but not different between lean and obese horses (Fig. 1C–D).

Twenty-four hour urine samples were collected from healthy lean men (mean age 37.7 ± 15.9 years), and from obese men with and without type 2 diabetes (mean age 51.1 ± 14.9 years). As previously reported, the human urinary cortisol metabolite profile was dominated by products of 5 α - and 5 β - reduction, β -cortisol in particular¹⁷, and total metabolite excretion was increased in obesity²⁰ (Supplementary Fig. S1). 20 β -DHF was observed in human urine, accounting for approximately 3% of total urinary cortisol metabolites (Supplementary Fig. S1), and 20 β -DHF excretion was increased in obesity (Fig. 2A), independently of the presence of diabetes, but was not disproportionately increased compared with other measured cortisol metabolites (see Supplementary Fig. S1 for metabolite pathways). 20 β -DHF was also readily detected in plasma from healthy lean men at similar levels to corticosterone (Fig. 2B), but was not altered in obesity.

Carbonyl reductase 1 converts cortisol to 20 β -dihydrocortisol and is increased in equine, murine and human obesity.

The enzyme responsible for 20 β -DHF production was previously unknown. Carbonyl reductase 1 (CBR1) is a ubiquitously expressed short-chain dehydrogenase known for its role in xenobiotic metabolism²¹. Cortisol is reported as a substrate of CBR1 but its product has not been identified²¹. We found that recombinant human CBR1 converted cortisol to 20 β -DHF in the presence of NADPH at a rate of 1.2 ± 0.4 ng/mg CBR1 protein per minute ($1 \mu\text{M}$ cortisol substrate). Moreover, CBR1 accounts for equine production of 20 β -DHF, which was the predominant metabolite in equine liver homogenate incubated with cortisol (Supplementary Fig. S2A), since this reaction was blocked by co-incubation with the CBR1 inhibitor quercetin in equine liver cytosol (Supplementary Fig. S2B). 20 β -DHF was not produced by incubation of equine liver microsomes with cortisol.

CBR1 is highly expressed in gut, liver, adipose and renal tissue of mice and humans (<http://www.proteinatlas.org/ENSG00000159228-CBR1/tissue>), the expression profile of horses has not been reported. We chose to examine the effect of obesity on expression of CBR1 in liver and adipose tissue. Hepatic CBR1 mRNA was not altered in obesity in horses or mice but CBR1 mRNA was increased in adipose tissue of obese horses (Fig. 3A). CBR1 mRNA was also higher in high-fat fed mice (Fig. 3B) and in visceral adipose tissue from obese compared with lean men (n = 8/group, Fig. 3C).

Common functional genetic variants in the CBR1 locus predict metabolic disturbances in obesity.

We used an expression quantitative trait loci (eQTL) approach in the STARNET dataset²² to test whether any SNPs in the CBR1 locus had a functional effect on hepatic or visceral adipose CBR1 expression, and then tested their association with phenotypic traits in publicly accessible datasets using MR-Base²³. There were no eQTLs which influenced visceral adipose expression of CBR1 but eQTLs were identified in liver. Further analyses suggested that SNPs associated with higher CBR1 expression in the liver were causally associated with higher fasting glucose (beta 0.01, se <0.01, p = 0.02), higher glycated haemoglobin (beta 0.01, se <0.01, p = 0.01) (Supplementary Table S5). There was no evidence that CBR1 expression was causally associated with fasting insulin, HOMA-B or HOMA-IR (p > 0.2), although there was suggestive evidence that higher CBR1 expression causes lower body fat (beta -0.01, se 0.01, p = 0.06). In addition to these observations in population based cohorts, eQTLs of CBR1 in liver were associated with BMI in the STARNET study participants (rs2835288, p = 5.7E-4). The eQTL rs2835288 had a negative effect on BMI (r = -0.13) but a positive effect on CBR1 liver expression (r = 0.43); accordingly CBR1 liver expression and BMI were negatively correlated (r = -0.093, p = 0.03). Using a conservative causal inference test²⁴ there was suggestive evidence (p = 0.07) that expression of CBR1 in liver was causal for variation in BMI.

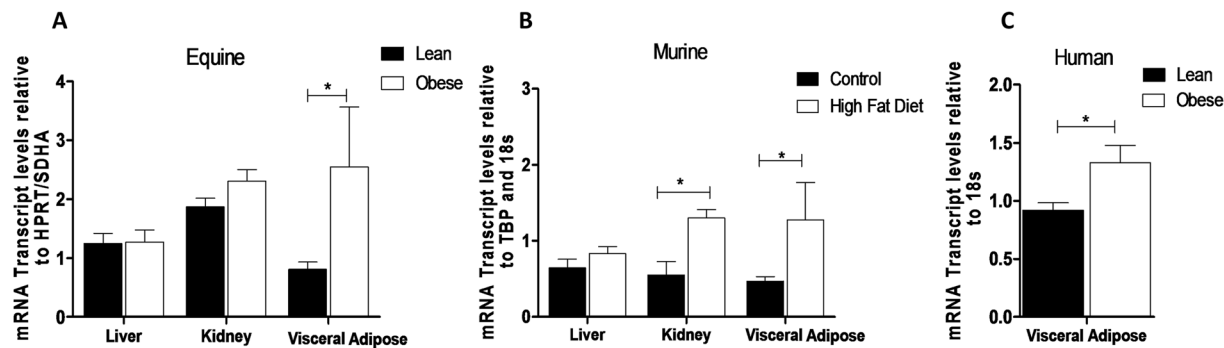


Figure 3. Carbonyl reductase 1 expression is increased in adipose tissue in obese horses, humans and mice. (A) *CBR1* mRNA transcript levels are increased in visceral adipose of obese horses ($n = 14/\text{group}$), (B) Visceral adipose *Cbr1* transcript levels were increased in mice on a high-fat diet for 6 weeks ($n = 6/\text{group}$). (C) Visceral adipose *CBR1* transcript levels were increased in obese humans ($n = 8/\text{group}$). Data are mean \pm SEM, * $P < 0.05$.

20 β -DHF activates glucocorticoid receptors. Given apparently contradictory associations of genetically high *CBR1* activity with metabolic dysfunction but not obesity in humans, and the association of *CBR1* expression and activity with obesity in multiple species, we investigated the interaction of 20 β -DHF with GR in order to predict consequences of elevated *CBR1* for GR activation.

Computational evaluation of the interactions formed by 20 β -DHF with the GR ligand binding site using docking calculations revealed a similar binding pose compared to cortisol (Fig. 4A). Both ligands formed hydrogen-bonds (H-bonds) similar in length with the same amino acid residues (Arg611, Gln570, Asn564 and Thr739). The only difference observed was the hydroxyl group of 20 β -DHF at position 20 representing a hydrogen bond donor instead of the carbonyl group of cortisol at the same position serving as hydrogen bond acceptor. Human epithelial A549 cells expressing endogenous GR and SF9 and HEK293 cells transfected with human GR were used to investigate 20 β -DHF as an endogenous ligand of GR. In binding studies, unlabeled 20 β -DHF displaced dexamethasone from GR in SF9 cell lysate preparations but only at 1000-fold higher concentration than cortisol (Fig. 4B). Nonetheless, transfection of HEK293 cells with GFP-GR showed that 20 β -DHF induced nuclear translocation of GR within 30 minutes (Fig. 4C).

In functional studies, 20 β -DHF was a weak agonist of GR. In A549 cells MMTV promoter-induced luciferase activity, indicative of GR activation, was only partially induced by 20 β -DHF at high concentration (2.5 μM ; Fig. 4D). However, endogenous GR-responsive genes glucocorticoid-induced leucine zipper (*GILZ*), insulin-like growth factor binding protein 1 (*IGFBP1*), dual specificity phosphatase 1 (*DUSP1*) and FK506-binding protein 51 (*FKBP51*) were all up-regulated by 20 β -DHF in a concentration-dependent manner (Fig. 4E) and to a similar maximum as cortisol, albeit at substantially higher concentrations than cortisol. Similar dose-response relationships were seen comparing the effects of cortisol and 20 β -DHF in preventing IL-1 β induction by TNF α in A549 cells (Fig. 4F).

Co-regulator recruitment by GR on binding 20 β -DHF was assessed by microarray assay for real-time co-regulator-nuclear receptor interaction (MARCoNI) with the GR agonist dexamethasone used as a positive control²⁵. Under these conditions, 20 β -DHF-activated GR recruited approximately 36% of the co-regulators recruited by dexamethasone (Fig. 5 and supplementary Excel file).

Pharmacological inhibition of *Cbr1* in mice results in increased hepatic GR activation and worsens the metabolic effects of high-fat feeding.

Knowing that both cortisol and 20 β -DHF might amplify GR activation, we sought to test the effects of *Cbr1* inhibition in mice to determine whether increasing the substrate/product balance would increase or decrease GR activation. Unlike horses and humans, mice produce corticosterone (B) rather than cortisol as their major glucocorticoid. To validate the use of murine models to study the *CBR1*/20 β -dihydroglucocorticoid pathway, preparatory work included demonstration that 20 β -dihydrocorticosterone (20 β -DHB), the murine equivalent of 20 β -DHF, induced MMTV-luciferase activity in HEK293 cells transfected with murine GR (Supplementary Fig. S3) and is present in murine plasma and tissue (Supplementary Fig. S4), and that *Cbr1* mRNA was higher in adipose of C57BL/6J adult male mice fed on a high fat diet for 6 weeks than controls on a normal chow diet ($n = 6/\text{group}$) (Fig. 3B). Murine diet-induced obesity was therefore used as a model in which to investigate the functional role of *CBR1* and 20 β -dihydro metabolites. Groups of adult male C57BL/6J mice ($n = 12/\text{group}$) maintained on a high fat diet were randomly assigned to groups receiving vehicle (ethanol) or *Cbr1* inhibitor (quercetin, 50 $\mu\text{g}/\text{mouse}/\text{day}$, administered in drinking water for 6 weeks).

Quercetin lowered hepatic 20 β -DHB (Fig. 6A) and increased the ratio of *Cbr1* substrate (corticosterone) to product (20 β -DHB) in liver (vehicle B: 20 β -DHB ratio 0.5 ± 0.2 versus quercetin B: 20 β -DHB ratio 1.6 ± 0.4 , $P = 0.01$). Quercetin did not alter 20 β -DHB levels in subcutaneous adipose tissue (Fig. 6B) or plasma (Fig. 6C). Quercetin also raised peak plasma corticosterone concentrations (Fig. 6D) but did not affect food or water intake or bodyweight over the course of the experiment (Fig. 6E). However, quercetin raised fasting plasma insulin concentrations and blood glucose during glucose tolerance tests (Fig. 6F,G). Quercetin also increased hepatic expression of the GR-responsive gene *Period 1* (*Per1*), but did not alter the mineralocorticoid-responsive gene serum glucocorticoid kinase 1 (*Sgk1*) or key gluconeogenic enzyme phosphoenolpyruvate carboxykinase (*Pepck*)

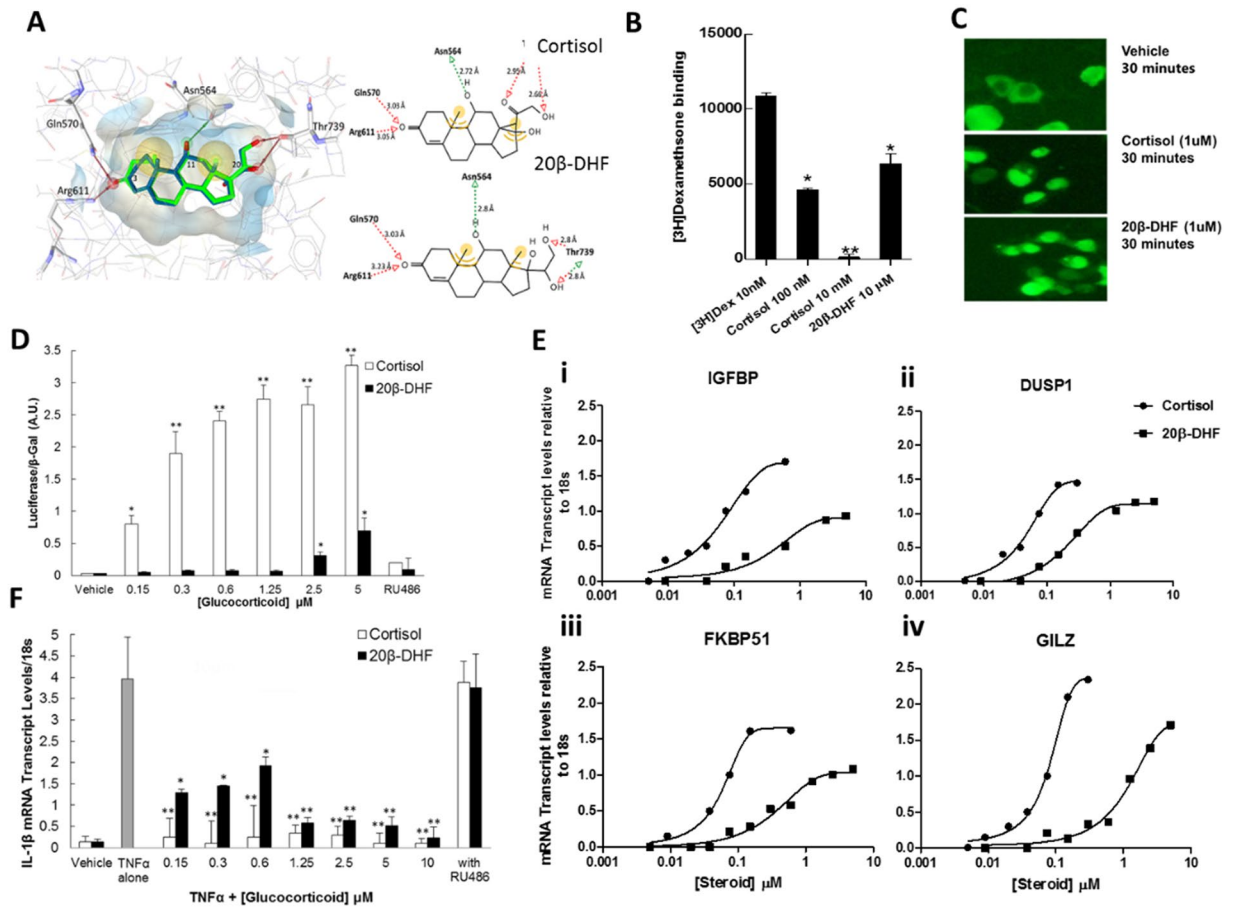


Figure 4. 20 β -Dihydrocortisol binds, translocates and activates glucocorticoid receptor inducing gene transcription and suppressing inflammatory gene transcription. (A) Docking of cortisol and 20 β -DHF into the ligand binding site of GR. The automatically created pharmacophore indicates the essential structural features for ligand binding (red and green arrows with spheres display hydrogen-bond (H-bond) interactions and yellow spheres hydrophobic interactions). Amino acid residues crucial for ligand binding are shown as sticks. Compared to the binding interactions of cortisol 20 β -DHF differs only in the hydroxyl group of cortisol serving as H-bond acceptor. (B) Unlabelled 20 β -DHF displaced ³[H]-dexamethasone from GR in the lysate of SF9 cells expressing GR. (C) 1 μ M 20 β -DHF induced translocation of cytoplasmic GR to the nucleus of HEK293 cells within 30 minutes visualised by fluorescence imaging at 20x magnification. (D) 2.5 μ M 20 β -DHF induced luciferase activation in A549 cells transfected with glucocorticoid responsive plasmid MMTV-luc. (E) 20 β -DHF induced transcription of GR-responsive genes IGFBP1 (EC₅₀ 0.51 μ M), DUSP1 (EC₅₀ 0.32 μ M), FKBP51 (EC₅₀ 0.44 μ M) and GILZ (EC₅₀ 1.25 μ M) in A549 cells. (F) TNF α induced transcription of IL-1 β in A549 cells, this was inhibited by cortisol and by 20 β -DHF at 0.15 μ M. Transcription was not reduced by co-incubation of cortisol or 20 β -DHF with the GR antagonist RU486. Experiments were performed in triplicate on three occasions. Data are mean \pm SEM (N = 3). Data were compared by two-way ANOVA and Bonferroni correction test: *P < 0.05, **P < 0.01 compared to vehicle.

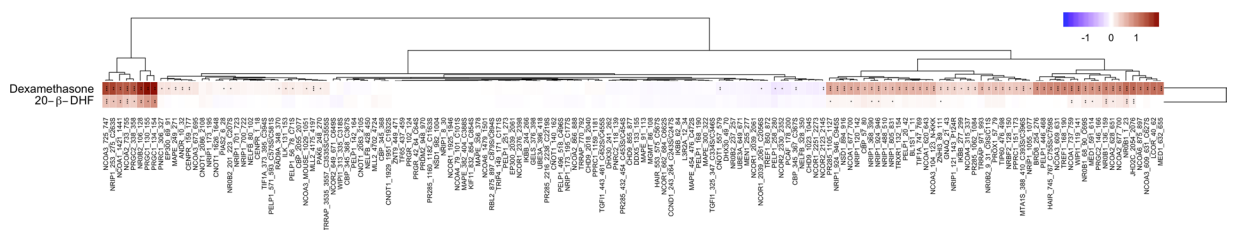


Figure 5. 20 β -Dihydrocortisol induces similar co-regulator interactions with GR as dexamethasone. MARCoNI analysis of co-activator recruitment showed that on binding 20 β -DHF, GR recruited 36% of the co-regulators recruited by dexamethasone. The colour of the bar represents the modulation index i.e. compound induced log-fold change of binding, red a positive fold change and blue a negative fold change. *P < 0.05, **P < 0.01, ***P < 0.001 compared to the unbound receptor.

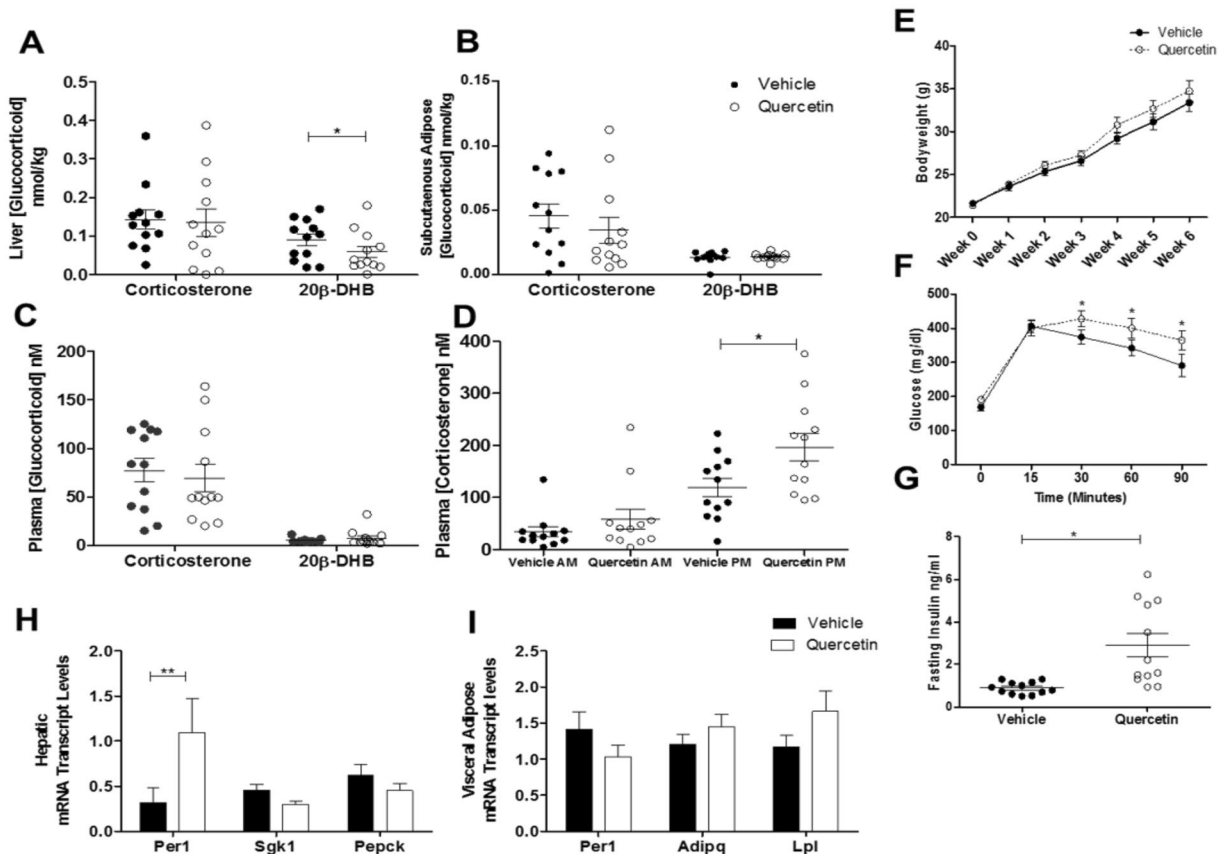


Figure 6. Inhibition of CBR1 in a murine model of diet-induced obesity results in increased GR activation and metabolic dysfunction. (A) Hepatic 20 β -DHB levels were significantly lower in quercetin treated mice, (B) 20 β -DHF levels were not altered in subcutaneous adipose tissue, (C) plasma 20 β -DHB levels were not altered by quercetin treatment (D) quercetin treatment resulted in increased peak plasma corticosterone levels. (E) Bodyweight was not different between mice in the vehicle treated group and mice treated with quercetin. (F,G) Quercetin-treated mice were significantly more insulin resistant and had higher fasted plasma insulin concentrations. (H) mRNA transcript levels of hepatic *Per1* were increased in quercetin treated mice, (I) Adipose mRNA expression of *Per1*, Adiponectin (*Adipq*) and lipoprotein lipase (*Lpl*) were not altered by quercetin treatment. Data are mean \pm SEM, $n = 12$ /group, * $P < 0.05$.

in the liver (Fig. 6H). Transcript levels of *Per1*, adiponectin and lipoprotein lipase were not altered by quercetin in subcutaneous adipose tissue (Fig. 6I).

Discussion

We describe a novel pathway of glucocorticoid metabolism, whereby cortisol is converted to 20 β -dihydrocortisol by the cytosolic enzyme CBR1, producing a metabolite which is a weak activator of GR. This pathway is up-regulated in adipose-tissue of obese horses, humans and mice; genetic variation in the liver predicts glucose dysregulation and its pharmacological inhibition alters the hypothalamic-pituitary-adrenal axis and tissue steroid levels in mice, with associated changes in GR-dependent gene expression and in metabolic homeostasis. This provides important new insights into the control of tissue glucocorticoid action and its contribution to cardio-metabolic disease.

The glucocorticoid metabolite profile of horses, a cortisol-dominant species²⁶, has not previously been described, although inter-species variation in hepatic cortisol metabolism has been reported²⁷. 20 β -DHF has been measured in horse urine¹⁶ and purported to be a sensitive indicator of cortisol administration, but ours are the first data showing 20 β -DHF relative to other metabolites, and the first demonstrating 20 β -DHF in plasma, adipose tissue and liver of horses. Predominance of 20 β -DHF production occurs in other large herbivores, including sheep^{28,29}. The human cortisol metabolome is more thoroughly described^{17,30}, and is dominated by products of 5 α - and 5 β -reduction. However, 20 β -DHF has previously been identified in human urine^{17,18} at levels similar to that of 5 α -tetrahydrocortisol (5 α -THF). Occasional case reports indicate urinary excretion of 20 β -DHF is increased in human Cushing's syndrome¹⁸, collagen disease³¹, rheumatoid arthritis³², hypertension¹⁹ and liver cirrhosis^{33,34}. In our study 20 β -DHF was readily detectable in the plasma of healthy humans at levels equal or higher to that of corticosterone, but 20 β -DHF represented a much smaller proportion of cortisol metabolism than in horses.

There are reports of reduction of cortisol to 20 β -DHF in various human cell/tissue types including kidney and prostate³⁵, gingiva³⁶, fibroblasts³⁷ and thrombocytes³⁸. We found that CBR1, a ubiquitously expressed member of the short-chain dehydrogenase/reductase (SDR) superfamily¹ catalyzes the conversion of cortisol to 20 β -DHF. *CBR1* expression is highest in tissues involved in detoxification or clearance, e.g. liver, colon, renal tubules and placenta³⁹ and has been studied for its role in drug metabolism³ and as an antioxidant⁴⁰. Its expression is associated with cancer, particularly lung cancer⁷, and reported to protect against pancreatic islet cell death⁴¹. Inhibitors of CBR1 have been proposed for use with chemotherapeutic agents to reduce the cardiotoxic side-effects of drugs such as doxorubicin⁴. Although glucocorticoids are known to be substrates of CBR1, the products have not been identified previously⁴⁰. We attribute 20 β -dihydro glucocorticoid generation to CBR1 since isolated CBR1 converts cortisol to 20 β -DHF and not to other metabolites, hepatic microsomal preparations are devoid of such activity, and inhibition of CBR1 is sufficient to prevent 20 β -DHF generation in equine liver cytosol and to lower tissue 20 β -DHB in mouse liver *in vivo*.

The majority of cortisol metabolites are thought to be inert and are produced to facilitate steroid excretion. Some metabolites, however, such as 5 α -tetrahydrocorticosterone (5 α -THB) bind and activate GR¹². Given that 20 β -DHF was found in plasma and tissues of humans at similar levels to the endogenous glucocorticoid corticosterone, and is thus potentially of physiological significance, we investigated the action 20 β -DHF on GR. We found that 20 β -DHF bound GR with a lower affinity than that of cortisol but induced nuclear translocation of the receptor within 30 minutes, a time period comparable with cortisol. 20 β -DHF induced transrepressive and trans-activation effects after binding to GR albeit at higher concentrations than cortisol. The consequences of variation in CBR1 activity for GR activation are therefore hard to predict.

In human obesity, increased total cortisol production⁴² without consistently elevated plasma cortisol concentrations has been attributed to enhanced clearance of cortisol²⁰, and in turn to increased 5 α - and 5 β -reductase and reduced 11 β -HSD1 activities²⁰. In humans, horses and mice obesity was associated with increased *CBR1/Cbr1* expression in adipose tissue, in horses with increased 20 β -DHF in plasma, and in humans and horses with increased 20 β -DHF in urine. Although 20 β -DHF was not disproportionately raised in urine, total cortisol metabolite excretion was increased so these data are consistent with the CBR1/20 β -DHF pathway contributing to increased cortisol clearance in obesity. Up-regulation of the CBR1 pathway in obesity was evident in adipose but not liver in horses and mice. In addition we did not identify any eQTL for *CBR1* expression in adipose suggesting that this up-regulation is a functional response to obesity. This is consistent with intra-adipose inflammation and hypoxia in obesity, since *CBR1* expression is up-regulated in response to hypoxia and inflammation via transcription factors including Nrf2, AhR and HIF-1 α ^{43,44}. In contrast our data suggest that there are genetic influences on hepatic *CBR1* expression in humans and that higher expression is associated with higher leptin, higher fasting glucose and higher HbA1c. Tissue-specific regulation of *CBR1* is reported^{43,45,46} so the eQTLs we identified may, for example, exert their influence through liver-specific promoter(s).

To further explore the contribution of CBR1 dysregulation in obesity, we administered the *Cbr1* inhibitor quercetin to mice with diet-induced obesity. Pharmacodynamic data suggest that quercetin inhibited corticosterone conversion to 20 β -DHB in liver, but not in adipose tissue; this may indicate that adipose 20 β -DHB is mainly derived from plasma rather than from local generation, or that the drug was unable to penetrate adequately into adipose tissue. Although an eQTL predicting higher hepatic CBR1 was associated with adverse metabolic indices, a paradoxical deterioration in glucose metabolism was observed when we inhibited the enzyme. This was accompanied by altered GR-regulated genes in liver which may be explained by the effect of substrate (corticosterone) accumulation or by secondary activation of the HPA axis with elevated peak plasma corticosterone resulting from impaired clearance. A similar phenotype and liver transcript profile occurs in mice with genetic deletion of the glucocorticoid-inactivating enzyme 5 α -reductase type 1⁴⁷. Alternatively we could infer that there is a non-linear relationship between *Cbr1* expression and effect and that an optimal cortisol/20 β -DHF balance may be required for normal liver GR activation, such that dysregulation of *Cbr1* in either direction leads to GR excess.

These findings are important since there are wide variations in CBR1 activity between individuals, in disease and after consumption of a number of naturally occurring CBR1 inhibitors: human tissue CBR1 expression and activity varies significantly between ethnic groups⁶; CBR1 expression and activity is increased in Down's syndrome due to the location of the CBR1 gene on chromosome 21⁴⁸; CBR1 inhibitors such as flavonoids and polyphenols are present in many foods and supplements⁴⁹ and reported enhancers of CBR1 activity include components of cigarette smoke⁷. Our data suggest the resulting variation of CBR1/20 β -DHF has important consequences for glucocorticoid metabolism and GR activation in health and disease.

Materials and Methods

Study design. We conducted case-control, cross-sectional or intervention studies in horses, humans, cells and mice. Sample sizes were chosen for 80% power to detect magnitudes of difference inferred from pilot data with the number of subjects and outcomes defined below or in figure legends. *In vitro* experiments were performed in triplicate with the number of experiments and outcomes defined below and in figure legends. Details on inclusion and exclusion criteria for horse and human subjects are detailed below. There were no dropouts and no outliers were excluded.

Cortisol metabolism in horses. The first aim of the study was to characterize cortisol metabolism in lean and obese horses. We addressed this aim using an observational case-control study recruiting lean horses and obese horses that were destined for euthanasia at the Royal (Dick) School of Veterinary Studies, University of Edinburgh. Studies in horses were approved by the Royal (Dick) School of Veterinary Studies Ethics and Research committee (VERC 7014). The study was performed according to the approved ethical guidelines. The sample size ($n = 14/\text{group}$) was determined by interim analysis using total glucocorticoid metabolite excretion as the end-point (80% power to detect a 20% difference in groups, $p < 0.05$). Lean (body condition score, measure of

obesity $\leq 3/5^{50}$) and obese (body condition score $\geq 4/5$) castrated male and female horses destined for euthanasia, were recruited from clinics at the Royal (Dick) School of Veterinary Studies. Horses were excluded if they were less than 1 year old, suffering from any concurrent systemic illness or had received glucocorticoid treatment in the 3 months prior to commencement of the study. Blood was obtained after overnight fasting, between 0900 h and 1100 h, via an intravenous cannula inserted in the jugular vein for the purpose of euthanasia.

Horses were humanely euthanased (0900 h to 1100 h) with quinalbarbitone sodium and cinchocaine hydrochloride (1 mL/10Kg bodyweight; Somulose, Dechra Veterinary Products, Shrewsbury, UK). Samples of peri-renal adipose, liver and urine were snap frozen and stored at -80°C .

Glucocorticoids were extracted from plasma, adipose and liver and quantified by LC-MS/MS (see supplementary methods). Urinary glucocorticoids were derivatized and quantified by GC-MS/MS (supplementary methods). Urinary creatinine was measured by the modified Jaffe's reaction (IL650 analyzer, Instrumentation Laboratories). Glucocorticoid concentrations were expressed as $\mu\text{g}/\text{mmol}$ creatinine. RNA was extracted from adipose and liver samples for quantification of *CBR1* mRNA relative to housekeeping genes SDHA and 18s (see supplementary methods and supplementary Table S7).

20 β -DHF in humans. In order to determine the relevance of 20 β -DHF to human health and disease samples were collected from male participants at the University of Edinburgh with approval from the University of Edinburgh Research Ethics Committee, National Health Service Lothian Research and Development Office, and at Umea University with approval from the Umea Regional Ethical Review Board. The study was performed according to the approved ethical guidelines. Participants were required to give written informed consent prior to recruitment to the study. Lean individuals were defined as having a BMI $<25\text{ kg}/\text{m}^2$ and obese individuals as having a BMI $>25\text{ kg}/\text{m}^2$. Clinical details are given in supplementary Tables 2–4.

Twenty-four hour urine samples were obtained from healthy lean ($n = 15$) and obese ($n = 18$) men recruited as part of a separate study¹³. In addition, urine was collected from obese men ($n = 19$) with Type 2 diabetes (with no insulin treatment) (Supplementary Table S2). Morning fasted plasma samples were collected from healthy lean ($n = 10$) and obese ($n = 10$) men (Supplementary Table S3). Adipose biopsy samples for RNA extraction were collected from lean ($n = 8$) and obese ($n = 8$) individuals undergoing surgery (Supplementary Table S4). Glucocorticoids were extracted and quantified from plasma and urine as detailed in supplementary methods.

CBR1 activity *in vitro*. In order to determine if CBR1 could convert cortisol to 20 β -DHF recombinant human CBR1 (Source Bioscience, Nottingham, UK) was incubated with cortisol (1 mM) and NADPH (2 mM) for a time course (5, 10, 20, 30, 60 and 120 minutes) at 37°C . The reaction was stopped with the addition of acetonitrile (500 μL). Deuterated cortisol (9, 11, 12, 12- ^2H]-cortisol) was added as an internal standard for quantification of cortisol and 20 β -DHF. Following centrifugation (5 minutes) the supernatant was removed, dried down and re-suspended in mobile phase (60 μL 50:50 Methanol: water) for analysis by LC-MS/MS (Supplementary methods).

Interrogation of genetic data for CBR1 expression and phenotypic associations. No genetic variants have been robustly associated with CBR1 enzyme activity. Therefore, genetic variants that are associated with CBR1 transcript levels in liver were used as a surrogate for CBR1 enzymatic activity. Expression quantitative trait loci (eQTLs) located near to the CBR1 gene and associated with CBR1 expression in the liver were identified from the Stockholm-Tartu Atherosclerosis Network Engineering Task (STARNET) study. STARNET comprises data on 600 cases of cardiovascular disease undergoing surgical intervention with collection of multiple tissue types including the liver. Genome wide genotyping and tissue expression analyses including RNAseq have been performed²².

A two-sample Mendelian randomization approach was used to estimate the effect of CBR1 expression in the liver on outcomes of body mass index (BMI), body fat, and glucose and insulin sensitivity. The outcome data were extracted from publicly available datasets, including from GIANT and MAGIC consortia, using MR-Base²³. In cases where outcome data were available from more than one study, the study containing all the relevant information with the largest sample size was selected. The causal effect of CBR1 expression on the relevant outcomes was estimated using the Wald (or ratio) method. This method divides the coefficient from regression of the outcome on the genetic variant by the coefficient from regression of the exposure on the variant⁵¹; the former was derived from publicly available data and the latter from STARNET. This approach makes the assumption that all instrumental variables are valid and not subject to horizontal pleiotropy where a genetic variant affects the outcome via more than one biological pathway. Study overlap is a concern when undertaking two sample Mendelian randomization analyses. The STARNET study has not provided data to the GIANT or MAGIC consortia.

20 β -DHF interaction with glucocorticoid receptor. *Docking of 20 β -DHF with GR.* Docking studies were performed using the GOLD software version 5.2 (Cambridge Crystallographic Data Centre, Cambridge, UK)⁵². This software allows the identification of precise docking poses for small molecules in the binding pocket of a protein applying a genetic algorithm. The crystal structures with the Protein Data Bank (PDB) entry 4P6X [DOI:10.2210/pdb4p6x/pdb] was selected for GR. First the respective co-crystallized ligand, cortisol for GR, was removed from the binding pocket and re-docked into the binding site to examine whether GOLD could restore the original binding pose and therefore to validate the docking settings (RMSD value of 0.409 for GR). The GR binding sites were defined by the ligand surrounded by a 6 Å region lining the active site. GoldScore was used as scoring function.

Protein ligand interactions determined by the docking software were further assessed using LigandScout 3.12 (intel:ligand GmbH, Vienna, Austria). Based on chemical functionalities, geometric distances and angles between

adjacent structures, this software automatically evaluates the observed binding pattern between the protein and the docked ligand⁵³.

Glucocorticoid binding in SF9 cell lysates. Competitive GR binding experiments were conducted as described previously⁵⁴. Briefly, recombinant human GR α baculovirus stock was produced using the Bac-to-Bac expression system and subsequently expressed in Sf9 cells according to the instructions by the manufacturer (Invitrogen, Carlsbad, CA). Sf9 cell lysates expressing recombinant human GR were then incubated in the presence of 10 nM [1,2,4,6,7-³H]-dexamethasone and unlabelled competitor (either 10 μ M or 100 nM cortisol or 10 μ M 20 β -DHF) for 4 h at 16 °C. Unbound ligand was separated by adding 5% dextran coated charcoal, followed by incubation at 4 °C for 10 min and centrifugation for 10 min at 3200 \times g and 4 °C. The GR bound fraction of [1,2,4,6,7-³H]-dexamethasone in supernatants was measured by scintillation counting.

Experiments in cell culture. Human alveolar carcinoma cell line, A549, the human embryonic kidney cell line, HEK293 and the clonal line of *Spodoptera frugiperda*, SF9 were obtained from the European Collection of Cell cultures (ECACC; distributor Sigma-Aldrich Co.). Cells were grown and maintained in Dulbecco's modified Eagle's medium (DMEM, Lonza Group Ltd., Basel, Switzerland) supplemented with glucose (4.5 g/L), heat-inactivated fetal bovine serum (HI-FBS) (10% v/v), penicillin (100 IU/mL), streptomycin (100 μ g/mL) and L-glutamine (2 mM). Cells were maintained and grown in a humidified atmosphere (95% air, 5% CO₂, 37 °C). Unless otherwise stated cells were seeded at 2×10^5 per 35-mm well. Cells were cultured in steroid-free medium for 24 h prior to experimentation. Plasmids were a kind gift from K.E. Chapman, Centre for Cardiovascular Science, University of Edinburgh.

To study GR translocation, HEK293 cells were transfected with GR labelled with Green Fluorescent Protein (GFP-GR). After seeding and overnight incubation in steroid free medium, the medium was replaced with phenol red free Opti-MEM (Lonza Group Ltd., Basel, Switzerland), and cells transfected using Lipofectamine 2000 (Invitrogen, Thermo Fisher Scientific Co., Waltham, MA, USA) with 1 μ g of GFP-GR plasmid. Cells were then treated with vehicle, cortisol (1 μ M) or 20 β -DHF (1 μ M) and imaged using fluorescence microscopy (Nikon Eclipse TS100) prior to treatment and at 30, 60, 120 minutes and 4 hours.

GR activation by 20 β -DHF was tested in A549 cells transiently transfected with MMTV-luciferase plasmid. Cells were transfected with 1 μ g of pMMTV LTR-luciferase¹² and 1 μ g of pKC275 (encoding β -galactosidase as internal control) and treated with vehicle, cortisol (0.3 μ M–5 μ M) or 20 β -DHF (0.3 μ M–5 μ M) for 4 hours. Cells were lysed and luciferase and β -galactosidase activities measured as described previously⁵⁵. Galactosidase activity was assayed using a Tropix Kit (Applied Biosystems, Foster City, CA, USA). The mean ratio of luciferase/ β -galactosidase activities was calculated.

To determine effects of 20 β -DHF on endogenous glucocorticoid-induced transcripts, A549 cells were incubated in the presence of increasing concentrations of either cortisol, 20 β -DHF (0.15 μ M–5 μ M) or vehicle (ethanol) for 4 hours. RNA was extracted and RT-qPCR used to quantify *DUSP1* (dual specificity phosphatase 1), *GILZ* (glucocorticoid-induced leucine zipper), *IGFBP1* (insulin-like growth factor binding protein 1) and of *FKBP51* (FK506-binding protein 51) relative to 18S (see supplementary Table S6 for primer design and supplementary methods). To determine the effects of 20 β -DHF on inflammatory transcripts cells were pre-incubated with vehicle or TNF α (10 ng/mL) for 1 hour before a further 4 hours in the presence of vehicle, cortisol or 20 β -DHF (0.15 μ M–5 μ M). RNA was extracted and IL-1 β (interleukin 1 β) mRNA quantified relative to 18S.

MARCoNI analysis of 20 β -DHF binding to GR. A microarray Assay for Real-time Co-regulator-Nuclear Receptor Interaction (MARCoNI) was used to compare the quantitative and qualitative co-regulator recruitment induced when 20 β -DHF (1 μ M) binds with GR with that of recruitment in response to dexamethasone (1 μ M) using a previously described method^{22,56}.

Pharmacological inhibition of CBR1 *in vivo*. For *in vivo* studies in mice, experiments were approved by the University of Edinburgh ethical committee and performed under the Provisions of the Animals Scientific Procedures Act (1986) of the UK Home Office, in accordance with EU Directive 2010/63. Male C57BL/6J mice aged 8 weeks were purchased from Harlan laboratories and used to conduct a randomized vehicle controlled experiment. Mice were randomly assigned to the vehicle (n = 12) or quercetin-treatment group (n = 12). All the mice were fed ad-lib high-fat diet (D12331, Research Diets inc., New Jersey, USA) for 6 weeks. Quercetin treatment was administered in drinking water (50 μ g/mouse/day⁵⁷). Bodyweight, food and water intake were monitored weekly. At week 6 blood collected from tail nick at 0800 h and at 2000h for analysis of plasma basal corticosterone by Enzo Corticosterone EIA Kit (Enzo Life Sciences, Exeter, UK). Mice were fasted for 6 h (0800–1400 h) in clean cages before undergoing a glucose tolerance test (GTT). Glucose (2 mg/g body weight, 40% w/v in saline) was administered via intraperitoneal injection. Blood was collected from tail nick immediately prior to injection, 15, 30, 60, and 90 minutes after injection. Glucose was measured immediately using a point-of-care glucometer. Plasma insulin was measured using the Ultra-Sensitive Mouse Insulin ELISA kit (Crystal Chem, Inc., IL, USA). Seven days after the GTT animals were culled by decapitation. Plasma was extracted from trunk blood and stored at –20 °C. Tissue was extracted and stored at –80 °C. mRNA and glucocorticoid extraction and quantification are described in supplementary methods (see Supplementary Table S8 for murine primer sequences).

Statistical analysis. For horse, human and mouse studies data were tested for normality by Kolmogorov-Smirnov test and subsequent comparisons (lean v obese) performed using unpaired Student's t-tests or Mann-Whitney U test. For cell-based studies with changing steroid concentrations comparisons (20 β -DHF v cortisol) were performed using two-way ANOVA with Bonferroni post-hoc tests. Statistical significance was set at P < 0.05.

References

- Malátková, P., Maser, E. & Wsól, V. Human carbonyl reductases. *Curr. Drug Metab.* **11**, 639–658, doi:10.2174/138920010794233530 (2010).
- Oppermann, U. In *Annual Review of Pharmacology and Toxicology* Vol. 47 (ed A. K. Cho) 293–322 (2007).
- Olson, L. E. *et al.* Protection from Doxorubicin-Induced Cardiac Toxicity in Mice with a Null Allele of Carbonyl Reductase. *Cancer Research* **63**, 6602–6606 (2003).
- Tanaka, M. *et al.* An unbiased cell morphology-based screen for new, biologically active small molecules. *PLoS Biol.* **3**, 0764–0776, doi:10.1371/journal.pbio.0030128 (2005).
- Jo, A. *et al.* Inhibition of Carbonyl Reductase 1 Safely Improves the Efficacy of Doxorubicin in Breast Cancer Treatment. *Antioxidants and Redox Signaling* **26**, 70–83, doi:10.1089/ars.2015.6457 (2017).
- Covarrubias, V. G., Lakhman, S. S., Forrest, A., Relling, M. V. & Blanco, J. G. Higher activity of polymorphic NAD(P)H:quinone oxidoreductase in liver cytosols from blacks compared to whites. *Toxicol. Lett.* **164**, 249–258, doi:10.1016/j.toxlet.2006.01.004 (2006).
- Kalabus, J. L., Cheng, Q., Jamil, R. G., Schuetz, E. G. & Blanco, J. G. Induction of carbonyl reductase 1 (CBR1) expression in human lung tissues and lung cancer cells by the cigarette smoke constituent benzo[a]pyrene. *Toxicology Letters* **211**, 266–273, doi:10.1016/j.toxlet.2012.04.006 (2012).
- Carlquist, M., Frejd, T. & Gorwa-Grauslund, M. F. Flavonoids as inhibitors of human carbonyl reductase 1. *Chemico-Biological Interactions* **174**, 98–108, doi:10.1016/j.cbi.2008.05.021 (2008).
- Edwards, C. R. W. *et al.* Localisation of 11 β -hydroxysteroid dehydrogenase-tissue specific protector of the mineralocorticoid receptor. *The Lancet* **332**, 986–989, doi:10.1016/S0140-6736(88)90742-8 (1988).
- Seckl, J. R. & Walker, B. R. Minireview: 11 beta-hydroxysteroid dehydrogenase type 1 - A tissue-specific amplifier of glucocorticoid action. *Endocrinology* **142**, 1371–1376 (2001).
- Hughes, K. A., Webster, S. P. & Walker, B. R. 11-Beta-hydroxysteroid dehydrogenase type 1 (11 beta-HSD1) inhibitors in Type 2 diabetes mellitus and obesity. *Expert Opinion on Investigational Drugs* **17**, 481–496, doi:10.1517/13543784.17.4.481 (2008).
- McInnes, K. J. *et al.* 5 α -reduced glucocorticoids, novel endogenous activators of the glucocorticoid receptor. *Journal of Biological Chemistry* **279**, 22908–22912, doi:Export Date 9 July 2014 (2004).
- Upreti, R. *et al.* 5 α -Reductase Type I Modulates Insulin Sensitivity in Men. *Journal of Clinical Endocrinology and Metabolism* **99**, E1397–E1406, doi:10.1210/jc.2014-1395 (2014).
- Wake, D. J. & Walker, B. R. 11 beta-Hydroxysteroid dehydrogenase type 1 in obesity and the metabolic syndrome. *Molecular and Cellular Endocrinology* **215**, 45–54, doi:10.1016/j.mce.2003.11.015 (2004).
- Wyse, C. A., McNie, K. A., Tannahil, V. J., Murray, J. K. & Love, S. Prevalence of obesity in riding horses in Scotland. *Veterinary Record* **162**, 590–591 (2008).
- Popot, M. A. *et al.* New approaches to detect cortisol administration in the horse. *Equine Veterinary Journal* **31**, 278–284 (1999).
- Shackleton, C. H. L. Profiling steroid hormones and urinary steroids. *J. Chromatogr. B Biomed. Sci. Appl.* **379**, 91–156, doi:10.1016/S0378-4347(00)80683-0 (1986).
- Schonshofer, M., Weber, B. & Nigam, S. Increased urinary excretion of free 20 α - and 20 β -dihydrocortisol in a hypercortisolemic but hypocortisolemic patient with Cushing's disease. *CLIN. CHEM.* **29**, 385–389 (1983).
- Kornel, L., Miyabo, S., Saito, Z., Cha, R. W. & Wu, F. T. Corticosteroids in human blood. VIII. Cortisol metabolites in plasma of normotensive subjects and patients with essential hypertension. *Journal of Clinical Endocrinology and Metabolism* **40**, 949–958 (1975).
- Andrew, R., Phillips, D. I. W. & Walker, B. R. Obesity and gender influence cortisol secretion and metabolism in man. *Journal of Clinical Endocrinology and Metabolism* **83**, 1806–1809 (1998).
- Wermuth, B. Purification and properties of an NADPH-dependent carbonyl reductase from human brain. Relationship to prostaglandin 9-ketoreductase and xenobiotic ketone reductase. *Journal of Biological Chemistry* **256**, 1206–1213 (1981).
- Franzén, O. *et al.* Cardiometabolic risk loci share downstream cis- and trans-gene regulation across tissues and diseases. *Science* **353**, 827–830, doi:10.1126/science.aad6970 (2016).
- Hemani, G. *et al.* MR-Base: a platform for systematic causal inference across the phenome using billions of genetic associations. *bioRxiv*. doi:10.1101/078972 (2016).
- Millstein, J., Zhang, B., Zhu, J. & Schadt, E. E. Disentangling molecular relationships with a causal inference test. *BMC Genet.* **10**, doi:10.1186/1471-2156-10-23 (2009).
- Desmet, S. J. *et al.* Cofactor profiling of the glucocorticoid receptor from a cellular environment. *Methods Mol. Biol.* **1204**, 83–94, doi:10.1007/978-1-4939-1346-6_8 (2014).
- Irvine, C. H. G. & Alexander, S. L. Factors affecting the circadian rhythm in plasma cortisol concentrations in the horse. *Domestic Animal Endocrinology* **11**, 227–238 (1994).
- Abel, S. M., Back, D. J., Maggs, J. L. & Park, B. K. Cortisol metabolism *in vitro* - II. Species difference. *Journal of Steroid Biochemistry and Molecular Biology* **45**, 445–453 (1993).
- Picard-Hagen, N. *et al.* Discriminant value of blood and urinary corticoids for the diagnosis of scrapie in live sheep. *Veterinary Record* **150**, 680–684 (2002).
- Schelcher, F. *et al.* Corticoid concentrations are increased in the plasma and urine of ewes with naturally occurring scrapie. *Endocrinology* **140**, 2422–2425 (1999).
- Abel, S. M., Maggs, J. L., Back, D. J. & Park, B. K. Cortisol metabolism by human liver *in vitro*. I. Metabolite identification and inter-individual variability. *Journal of Steroid Biochemistry and Molecular Biology* **43**, 713–719 (1992).
- Ichikawa, Y. Metabolism of cortisol-4-C14 in patients with infectious and collagen diseases. *Metabolism* **15**, 613–625 (1966).
- Kemény, V., Farkas, K. & Gömör, B. Production of unconjugated 20-DHF (11 beta, 17 alpha, 20 beta, 21-tetrahydroxy-pregn-4-en-3-one) in active rheumatoid arthritis. *Acta Med Acad Sci Hung* **27**, 381–387 (1970).
- Bradlow, H. L., Fukushima, D. K., Zumoff, B., Hellman, L. & Gallagher, T. F. Metabolism of Reichstein's substance E in man. *The Journal of clinical endocrinology and metabolism* **22**, 748–753 (1962).
- Bradlow, H. L., Zumoff, B., Fukushima, D. K., Hellman, L. & Gallagher, T. F. Biotransformations of the C-20-dihydro metabolites of cortisol in man. *Journal of Clinical Endocrinology and Metabolism* **34**, 997–1002, doi:10.1210/jcem-34-6-997 (1972).
- Jenkins, J. S. The metabolism of cortisol by human extra-hepatic tissues. *Journal of Endocrinology* **34**, 51–56 (1966).
- El Attar, T. M. A. *In vitro* metabolism studies of [1,2,6,7-³H]-cortisol in human gingiva in health and disease. *Steroids* **25**, 355–364, doi:10.1016/0039-128X(75)90092-6 (1975).
- Sweat, M. L. *et al.* The metabolism of cortisol and progesterone by cultured uterine fibroblasts, strain U12-705. *BBA - Biochimica et Biophysica Acta* **28**, 591–596 (1958).
- Arie, R., Hoogervorst-Spalter, H., Kaufmann, H., Joshua, H. & Klein, A. Metabolism of cortisol by human thrombocytes. *Metabolism* **28**, 67–69, doi:10.1016/0026-0495(79)90170-7 (1979).
- Wirth, H. & Wermuth, B. Immunohistochemical localization of carbonyl reductase in human tissues. *J. HISTOCHEM. CYTOCHEM.* **40**, 1857–1863 (1992).
- Forrest, G. L. & Gonzalez, B. Carbonyl reductase. *Chemico-Biological Interactions* **129**, 21–40, doi:10.1016/S0009-2797(00)00196-4 (2000).
- Rashid, M. A. *et al.* Carbonyl reductase 1 protects pancreatic β -cells against oxidative stress-induced apoptosis in glucotoxicity and lipotoxicity. *Free Radic. Biol. Med.* **49**, 1522–1533, doi:10.1016/j.freeradbiomed.2010.08.015 (2010).

42. Strain, G. W. *et al.* Sex difference in the influence of obesity on the 24 hr mean plasma concentration of cortisol. *Metabolism* **31**, 209–212, doi:10.1016/0026-0495(82)90054-3 (1982).
43. Ebert, B., Kisiela, M. & Maser, E. Transcriptional regulation of human and murine short-chain dehydrogenase/reductases (SDRs) – an in silico approach. *Drug Metab. Rev.* **48**, 183–217, doi:10.3109/03602532.2016.1167902 (2016).
44. Miura, T., Taketomi, A., Nishinaka, T. & Terada, T. Regulation of human carbonyl reductase 1 (CBR1, SDR21C1) gene by transcription factor Nrf2. *Chemico-Biological Interactions* **202**, 126–135, doi:10.1016/j.cbi.2012.11.023 (2013).
45. Guo, C., Wang, W., Liu, C., Myatt, L. & Sun, K. Induction of PGF2 α synthesis by cortisol through GR dependent induction of CBR1 in human amnion fibroblasts. *Endocrinology* **155**, 3017–3024, doi:10.1210/en.2013-1848 (2014).
46. Lakhman, S. S., Chen, X., Gonzalez-Covarrubias, V., Schuetz, E. G. & Blanco, J. G. Functional characterization of the promoter of human carbonyl reductase 1 (CBR1). Role of XRE elements in mediating the induction of CBR1 by ligands of the aryl hydrocarbon receptor. *Mol. Pharmacol.* **72**, 734–743, doi:10.1124/mol.107.035550 (2007).
47. Dowman, J. K. *et al.* Loss of 5 α -Reductase Type 1 accelerates the development of hepatic steatosis but protects against hepatocellular carcinoma in male mice. *Endocrinology* **154**, 4536–4547, doi:10.1210/en.2013-1592 (2013).
48. Quiñones-Lombraña, A. *et al.* Interindividual variability in the cardiac expression of anthracycline reductases in donors with and without Down syndrome. *Pharmaceutical Research* **31**, 1644–1655, doi:10.1007/s11095-013-1267-1 (2014).
49. Boušová, I., Skálová, L., Souček, P. & Matoušková, P. The modulation of carbonyl reductase 1 by polyphenols. *Drug Metab. Rev.* **47**, 520–533, doi:10.3109/03602532.2015.1089885 (2015).
50. Carroll, C. L. & Huntington, P. J. Body condition scoring and weight estimation of horses. *Equine Veterinary Journal* **20**, 41–45 (1988).
51. Didelez, V. & Sheehan, N. Mendelian randomization as an instrumental variable approach to causal inference. *Stat. Methods Med. Res.* **16**, 309–330, doi:10.1177/0962280206077743 (2007).
52. Jones, G., Willett, P., Glen, R. C., Leach, A. R. & Taylor, R. Development and validation of a genetic algorithm for flexible docking. *J. MOL. BIOL.* **267**, 727–748, doi:10.1006/jmbi.1996.0897 (1997).
53. Wolber, G. & Langer, T. LigandScout: 3-D pharmacophores derived from protein-bound ligands and their use as virtual screening filters. *J. Chem. Inf. Model.* **45**, 160–169, doi:10.1021/ci049885e (2005).
54. Beck, K. R., Sommer, T. J., Schuster, D. & Odermatt, A. Evaluation of tetrabromobisphenol A effects on human glucocorticoid and androgen receptors: A comparison of results from human- with yeast-based *in vitro* assays. *Toxicology* **370**, 70–77, doi:10.1016/j.tox.2016.09.014 (2016).
55. Voice, M. W., Seckl, J. R. & Chapman, K. E. The sequence of 5' flanking DNA from the mouse 11 β -hydroxysteroid dehydrogenase type 1 gene and analysis of putative transcription factor binding sites. *GENE* **181**, 233–235, doi:10.1016/S0378-1119(96)00490-8 (1996).
56. Atucha, E. *et al.* A mixed glucocorticoid/mineralocorticoid selective modulator with dominant antagonism in the male rat brain. *Endocrinology* **156**, 4105–4114, doi:10.1210/en.2015-1390 (2015).
57. Hayek, T. *et al.* Reduced progression of atherosclerosis in apolipoprotein E-deficient mice following consumption of red wine, or its polyphenols quercetin or catechin, is associated with reduced susceptibility of LDL to oxidation and aggregation. *Arteriosclerosis, Thrombosis, and Vascular Biology* **17**, 2744–2752 (1997).

Acknowledgements

We are grateful to S. Kothiya, L. Ramage and A. Rutter for analytical support, the staff of the Edinburgh Clinical Research Facility and its Mass Spectrometry Core Laboratory, K Chapman for the gift of the plasmids, Prof Thierry Langer, University of Vienna and Inte:Ligand GmbH for providing LigandScout software and Pro, Daniela Schuster, University of Innsbruck for support with docking, and the staff of the Royal (Dick) School of Veterinary Studies Equine Hospital for their help with sample collection. We would like to thank the owners whose horses were included in the study. The laboratory is supported by a British Heart Foundation Centre of Excellence Award. RM was supported by the Biological and Biotechnological Sciences Research Council and Zoetis Animal Health (Grant No R42126 and R82976) with additional funding from the University of Edinburgh Wellcome Trust Institutional Strategic Support Fund. AO was supported by the Swiss National Science Foundation (Grant No. 31001-159454). BW was supported by a British Heart Foundation Programme Grant and Wellcome Trust Investigator Award.

Author Contributions

R.M., K.B., M.N., A.C., D.M., R.H., A.S., A.A., R.U., P.H., T.M., C.K., J.K. and A.O. designed and/or conducted the experiments and/or analysed the data. N.H. and R.A. developed and supervised the mass spectrometry measurements. R.S., T.O., O.M., and R.A. contributed to the design and execution of the clinical studies. A.C., A.R., E.S. and J.B. contributed data for GWAS analysis. R.M. and B.W. conceived the studies and supervised the experimental design, execution, and analysis. R.M. and B.W. wrote the manuscript, which was reviewed by all authors.

Additional Information

Supplementary information accompanies this paper at doi:10.1038/s41598-017-10410-1

Competing Interests: The authors declare that they have no competing interests.

Publisher's note: Springer Nature remains neutral with regard to jurisdictional claims in published maps and institutional affiliations.



Open Access This article is licensed under a Creative Commons Attribution 4.0 International License, which permits use, sharing, adaptation, distribution and reproduction in any medium or format, as long as you give appropriate credit to the original author(s) and the source, provide a link to the Creative Commons license, and indicate if changes were made. The images or other third party material in this article are included in the article's Creative Commons license, unless indicated otherwise in a credit line to the material. If material is not included in the article's Creative Commons license and your intended use is not permitted by statutory regulation or exceeds the permitted use, you will need to obtain permission directly from the copyright holder. To view a copy of this license, visit <http://creativecommons.org/licenses/by/4.0/>.

© The Author(s) 2017