



**Universiteit
Leiden**
The Netherlands

Germline variants in POLE are associated with early onset mismatch repair deficient colorectal cancer

Elsayed, F.A.; Kets, C.M.; Ruano, D.; Akker, B. van den; Mensenkamp, A.R.; Schrumpf, M.; ... ; Wezel, T. van

Citation

Elsayed, F. A., Kets, C. M., Ruano, D., Akker, B. van den, Mensenkamp, A. R., Schrumpf, M., ... Wezel, T. van. (2015). Germline variants in POLE are associated with early onset mismatch repair deficient colorectal cancer. *European Journal Of Human Genetics*, 23(8), 1080-1084. doi:10.1038/ejhg.2014.242

Version: Not Applicable (or Unknown)

License: [Leiden University Non-exclusive license](#)

Downloaded from: <https://hdl.handle.net/1887/117551>

Note: To cite this publication please use the final published version (if applicable).

ARTICLE

Germline variants in *POLE* are associated with early onset mismatch repair deficient colorectal cancer

Fadwa A Elsayed¹, C Marleen Kets², Dina Ruano¹, Brendy van den Akker¹, Arjen R Mensenkamp², Melanie Schruppf¹, Maartje Nielsen³, Juul T Wijnen^{3,4}, Carli M Tops³, Marjolijn J Ligtenberg^{2,5}, Hans FA Vasen⁶, Frederik J Hes³, Hans Morreau¹ and Tom van Wezel^{*,1}

Germline variants affecting the exonuclease domains of *POLE* and *POLD1* predispose to multiple colorectal adenomas and/or colorectal cancer (CRC). The aim of this study was to estimate the prevalence of previously described heterozygous germline variants *POLE* c.1270C>G, p.(Leu424Val) and *POLD1* c.1433G>A, p.(Ser478Asn) in a Dutch series of unexplained familial, early onset CRC and polyposis index cases. We examined 1188 familial CRC and polyposis index patients for *POLE* p.(Leu424Val) and *POLD1* p.(Ser478Asn) variants using competitive allele-specific PCR. In addition, protein expression of the *POLE* and DNA mismatch repair genes was studied by immunohistochemistry in tumours from *POLE* carriers. Somatic mutations were screened using semiconductor sequencing. We detected three index patients (0.25%) with a *POLE* p.(Leu424Val) variant. In one patient, the variant was found to be *de-novo*. Tumours from three patients from two families were microsatellite instable, and immunohistochemistry showed MSH6/MSH2 deficiency suggestive of Lynch syndrome. Somatic mutations but no germline *MSH6* and *MSH2* variants were subsequently found, and one tumour displayed a hypermutator phenotype. None of the 1188 patients carried the *POLD1* p.(Ser478Asn) variant. *POLE* germline variant carriers are also associated with a microsatellite instable CRC. *POLE* DNA analysis now seems warranted in microsatellite instable CRC, especially in the absence of a causative DNA mismatch repair gene germline variant.

European Journal of Human Genetics (2015) 23, 1080–1084; doi:10.1038/ejhg.2014.242; published online 5 November 2014

INTRODUCTION

Faithful DNA replication and the repair of errors are both essential for the maintenance of genomic stability and suppression of carcinogenesis.¹ Duplication of genomes with high accuracy is achieved through three mechanisms: the high selectivity of DNA polymerases; exonucleolytic proofreading; and post replication mismatch repair.² The DNA polymerases ϵ (POL ϵ) and δ (POL δ) are required for the efficient genome replication in the eukaryotic replication fork.³ Their major component proteins, encoded by *POLE* and *POLD1*, respectively, possess an intrinsic 3'–5' proofreading domain that removes incorrectly inserted nucleotides during DNA synthesis.^{4–9} Studies in the yeast have shown that mutations in the proofreading domains of POL ϵ or POL δ increase spontaneous mutation rates.^{8,9} In addition, somatic mutations in the proofreading domains of *POLD1* and *POLE* have been identified in microsatellite instable (MSI) and hypermutated subgroups of colorectal cancers (CRCs).^{10–12}

Recently, Palles *et al* reported that heterozygous germline variants in the proofreading domain of the DNA polymerases *POLE* and *POLD1* predispose, with a high penetrance, to multiple colorectal adenomas, early onset CRC (OMIM #114500) and endometrial cancer (OMIM #608089). These variants were found by whole-genome sequencing and linkage analysis in three large families with a dominant pattern of CRC and multiple adenomas.¹³ Subsequent screening of 3805 CRC patients revealed that these variants are relatively rare: *POLE*

p.(Leu424Val) was found 12 times, and *POLD1* p.(Ser478Asn) only once, in patients with a positive family history of adenomas or CRC. The tumours seen in *POLE* and *POLD1* carriers were microsatellite stable and showed a hypermutator phenotype.¹³ Valle *et al*¹⁴ detected a single *POLE* p.(Leu424Val) variant in a screen of 858 familial/early onset CRC and polyposis patients.

The goal of our study was to estimate the prevalence of germline variants in *POLE* and *POLD1* in a Dutch series of unexplained familial, early onset CRC and polyposis index cases. In addition, we analysed phenotypes and tumour characteristics in this patient series.

MATERIALS AND METHODS

Samples

DNA from index patients with colorectal polyposis¹⁵ and familial CRC¹⁶ was analysed for *POLE* NM_006231.2:c.1270C>G, p.(Leu424Val) and *POLD1* NM_002691.1:c.1433G>A, p.(Ser478Asn). Leucocyte DNA from 485 polyposis cases was included. These patients had developed ≥ 10 colorectal adenomas and had been previously tested negative for *APC* and *MUTYH* germline mutations at the Laboratory for Diagnostic Genome Analysis in Leiden. Clinical data were collected from the Netherlands Foundation for the Detection of Hereditary Tumours and from clinical genetics departments in the Netherlands.¹⁷ The familial CRC cohort comprised 703 patients, mainly from the south-western region of the Netherlands, with most cases submitted by clinical genetics departments. These patients met clinical criteria for MSI testing, which are based on early onset of disease and/or familial clustering of CRC and associated cancers, corresponding to the revised Bethesda criteria. Samples were collected

¹Department of Pathology, LUMC, Leiden, The Netherlands; ²Department of Human Genetics, Radboud University Medical Center, Nijmegen, The Netherlands; ³Department of Clinical Genetics, LUMC, Leiden, The Netherlands; ⁴Department of Human Genetics, LUMC, Leiden, The Netherlands; ⁵Department of Pathology, Radboud University Medical Center, Nijmegen, The Netherlands; ⁶Department of Gastroenterology, LUMC, Leiden, The Netherlands

*Correspondence: Dr T van Wezel, Department of Pathology, LUMC, Albinusdreef 2, Leiden, 2333ZA, The Netherlands. Tel: +31 71 526 6813; Fax: +31 71 526 6952; E-mail: t.van_wezel@lumc.nl

Received 28 May 2014; revised 11 September 2014; accepted 19 September 2014; published online 5 November 2014

between 1997 and 2013, and DNA for this cohort was available from peripheral blood (340 cases) or from formalin-fixed paraffin embedded normal mucosa (363 cases). These samples were described before, only DNA that passes quality check was included in the study.¹⁶ The study was approved by the local medical ethical committee of the Leiden University Medical Center (P01-019).

Genotyping

POLE p.(Leu424Val) and *POLD1* p.(Ser478Asn) were tested using the competitive allele-specific PCR (KASPar) assay, following the manufacturer's protocol (LGC Genomics, Berlin, Germany). The primers were designed using Primerpicker (KBioscience, Hoddesdon, UK). The following primers were used to analyse *POLE* c.1270C>G: *POLE_L424V_C1*; 5'-GGA TCA TAG CCT AGC TTG GCC TT-3', *POLE_L424V_A2*; 5'-GAA GGT CGG AGT CAA CGG ATT CCT TCC TGT GGG CAG TCA TAA TG-3' and *POLE_L424V_A1*; 5'-GAA GGT GAC CAA GTT CAT GCT CCT TCC TGT GGG CAG TCA TAA TC-3'. For *POLD1* c.1433G>A, we used: *POLD1_S478N_C2*; 5'-TCT GCT CGC CCA GGA AGT GGA A-3', *POLD1_S478N_A2*; 5'-GAA GGT CGG AGT CAA CGG ATT CCT ACA CGC TCA ATG CCG TGA A-3' and *POLD1_S478N_A1*; 5'-GAA GGT GAC CAA GTT CAT GCT ACA CGC TCA ATG CCG TGA G-3'.

Variants were identified using the CFX manager software v3.0 (Bio-Rad, Veenendaal, the Netherlands). Formalin-fixed paraffin embedded and leucocyte DNA samples were genotyped in separate experiments for accurate genotyping results. Samples positive for *POLE* c.1270C>G, p.(Leu424Val) were subsequently validated by Sanger sequencing of leucocyte DNA and of DNA extracted from formalin-fixed paraffin embedded tissues, using both normal and tumour DNA where available. Sanger sequencing was performed by Macrogen (Amsterdam, the Netherlands). The following primers, with universal M13 tails (upper case), were used for *POLE* c.1270C>G; forward: 5'-TGT AAA ACG ACG GCC AGT cca tct gga tgc gtc cac a-3' and reverse: 5'-CAG GAA ACA GCT ATG ACC gaa tca tcc tgg ctt ctg ttc tca-3'. For *POLD1* validation we used the oligonucleotides, forward: 5'-TGT AAA ACG ACG GCC AGT ctg tcc ttg gaa ggc cact-3' and reverse: 5'-CAG GAA ACA GCT ATG ACC gtc agg gag gca gca-3'. Sequencing primers were designed using Primer3 (<http://primer3.wi.mit.edu/>) and all oligonucleotides were manufactured by IDT (Leuven, Belgium).

The *POLE* p.(Leu424Val) carriers were submitted to the LOVD database <http://databases.lovd.nl/shared/genes/POLE>, IDs 00019773 (PT1), 00019821 (PT2) 00019822 (PT3) and 00019824 (PT4).

Immunohistochemistry

Immunohistochemistry (IHC) for the DNA MMR proteins was performed as previously described.¹⁸ *POLE* IHC was performed using 4- μ m thick, formalin-fixed paraffin embedded tissue sections on StarFrost adhesive slides (Waldemar Knittel, Braunschweig, Germany), dried overnight at 37°C. Tissue sections were deparaffinised three times in xylene for a total of 15 min and subsequently rehydrated with 100% ethanol three times for a total of 9 min. Endogenous peroxidase activity was blocked by immersing the tissue sections in a 0.3% solution of hydrogen peroxide (H₂O₂) and methanol at room temperature for 20 min. This treatment was followed by hydration in a graded ethanol series to distilled water. Antigen retrieval was then performed by boiling the tissue sections in 0.01 M citrate buffer (pH 6.0) for 10 min using a microwave oven, after which the tissue sections were allowed to cool in the same buffer to room temperature. The tissue sections were then washed twice with distilled water, for 5 min each time, followed by two 5 min washes in 1 \times phosphate buffered saline. This was followed by the addition of the primary antibody (ab110876, ABCAM, Cambridge UK, dilution 1:1600) and the incubation of the covered slides overnight in a humid chamber at room temperature.

After three 5 min washes in 1 \times phosphate buffered saline the next morning, the tissue sections were incubated for 30 min with horseradish peroxidase-conjugated multimer secondary antibody (PowerVision Poly/HRP, DAKO, Heverlee, Belgium). The slides then received three 5 min rinses in 1 \times phosphate buffered saline and the antigen-antibody reaction was visualised using 3,3'-diaminobenzidine in chromogenic solution, applied for 10 min. The tissue sections were subsequently rinsed in distilled water and then stained with haematoxylin for 20 s. The tissue sections were rinsed in running tap water for

5 min and washed twice with distilled water, followed by dehydration in a graded ethanol series (50, 70 and 100%) and cleared in xylene. Finally, the tissue sections were dried, mounted and covered for microscopic analysis. Tissue stroma and normal epithelium or lymph follicles served as positive internal controls while analysing *POLE*, *MLH1*, *PMS2*, *MSH2* and *MSH6* expression.

Somatic mutation screening

DNA from normal and tumour tissues of the *POLE* p.(Leu424Val) carriers PT1 and PT2 was screened for somatic mutations using a custom AmpliSeq panel (Life Technologies Europe, Bleiswijk, the Netherlands) of the DNA mismatch repair (MMR) genes *MLH1*, *MSH2*, *MSH6*, *PMS2*, supplemented with *APC* and *TP53*. The panel was sequenced using the Ion PGM system at Leiden Genome Technology Center, the Netherlands (www.lgctc.nl) and analysed with the Nextgene Software package (Softgenetics, State College, PA, USA). MMR DNA sequencing was performed as previously described in the case of PT3.¹⁹ Somatic *KRAS* and *BRAF* hotspot mutations (*KRAS* exons 2 and 3 and *BRAF* p.V600E) were tested as described previously.²⁰ Somatic mutations are submitted to the COSMIC database (ID # 616).

Methylation

MSH2 methylation was studied as described earlier using the *MSP1* and *MSP3* primer sets for both methylated and unmethylated DNA.²¹ DNA was bisulfite treated using the EZ DNA methylation KIT (ZYMO Research Corp, Irvine, CA, USA).

RESULTS AND DISCUSSION

We assessed the prevalence of *POLE* p.(Leu424Val) and *POLD1* p.(Ser478Asn) in a cohort of 1188 Dutch index patients with multiple polyps or familial CRC. All patients were originally referred for possible FAP (OMIM #175100), MAP (OMIM #608456) or Lynch syndrome (OMIM #120435) and no variants were found in the relevant genes. Although we did not detect *POLD1* p.(Ser478Asn), three index patients with the *POLE* p.(Leu424Val) variant were identified. These patients developed multiple colorectal adenomas, of whom two showed early onset CRC. We can therefore confirm that *POLE* variants play a minor but tangible role in familial CRC and polyposis. Despite an enrichment in our cohort for inherited CRC and polyposis, the frequency (3 in 1188; 0.25%) is also comparable to the currently reported frequency.^{13,14}

The first patient (PT1) was diagnosed with a MSI caecum tumour and two adenomas at age 40. She developed, cumulatively, around 30 polyps and presented with a microsatellite stable endometrial cancer at age 50. Her son, patient 2 (PT2), is also a carrier of *POLE* p.(Leu424Val). In addition, he was clinically diagnosed with neurofibromatosis type I, the latter originating in his father's family. He developed a MSI caecum adenocarcinoma at age 30 and was diagnosed with an astrocytoma at age 15, presumably as a consequence of neurofibromatosis. Interestingly, a patient with multiple polyps, and two astrocytomas at age 26, has been described in a family with a *POLD1* variant (family SM6).¹³

As tumour tissue was available for the *POLE* p.(Leu424Val) carriers PT1 and PT2 (mother and son, respectively), we performed IHC for *POLE*, *MLH1*, *MSH2*, *MSH6* and *PMS2*. Considering that the *POLE* exonuclease domain is essential for the maintenance of replication fidelity, the lack of predictive value of *POLE* IHC is to be expected, in contrast to the predictive value for the MMR genes. However, the availability of tumour tissue from the *POLE* variant carriers allowed us to test this. Indeed, both MSI-H tumour tissues showed a positive nuclear *POLE* protein expression in tumour cells as compared with normal cells from the same tissue. *POLE* IHC therefore does not appear to be predictive for the effect of the variant.

The MSI-H caecum tumour from PT1 showed loss of only MSH6 protein expression in tumour cells (Figure 1), whereas the adenocarcinoma from PT2 showed loss of both MSH2 and MSH6 protein expression in tumour cells (Figure 1). The loss of nuclear expression of MSH6 and MSH6/MSH2 in the tumours from this family is indicative for Lynch syndrome because of an inherited *MSH6* or *MSH2* germline variant. However, no germline variants were found in *MSH6* or *MSH2*, nor in any of the other MMR genes. We therefore screened PT1 and PT2 tumours for somatic mutations in *MLH1*, *MSH2*, *MSH6*, *PMS2* and also for somatic mutations in *APC* and *TP53* (Table 1). The mother's tumour (PT1) showed a hypermutator phenotype, with multiple somatic mutations in the MMR genes and in *APC* and *TP53*, whereas the adenocarcinoma from PT2 showed no *APC* or *TP53* mutations. Interestingly, PT1 showed three somatic mutations in *MSH6*. The first is a pathogenic truncating mutation, c.2629G>T, p.(Glu877*), the second is a possibly pathogenic missense mutation, c.4000C>T, p.(Arg1334Trp) that might affect the splice donor site in

exon 9, while the third mutation is probably non-pathogenic, c.3725G>A, p.(Arg1242His). A single truncating *MSH2* mutation, c.643C>T, p.(Gln215*), was found in the son's tumour (PT2, Table 1), although a second hit in *MSH2* was not detected. No somatic mutations were detected in *KRAS* and *BRAF* hotspots in the tumours from PT1 and PT2. These somatic mutations show an excess of G:C to T:A substitutions, similar to the reported EDM-associated mutator phenotype.¹³ No other somatic mutations or previously undetected germline mutations were found. In light of the hypermutator phenotype associated with *POLE* mutations, a second point mutation was to be expected. On the other hand, promoter methylation or loss of heterozygosity at the MMR locus as the second hit could explain the loss of MSH2 or MSH6. Recently it was demonstrated that the loss of heterozygosity accounts for the second hit in over 50% of MSI tumours, albeit mostly in *MLH1* deficient tumours.¹⁹

Patient 3 (PT3) was diagnosed with multiple polyps at age 34. Two of the patient's brothers were affected with CRC at ages 18 and

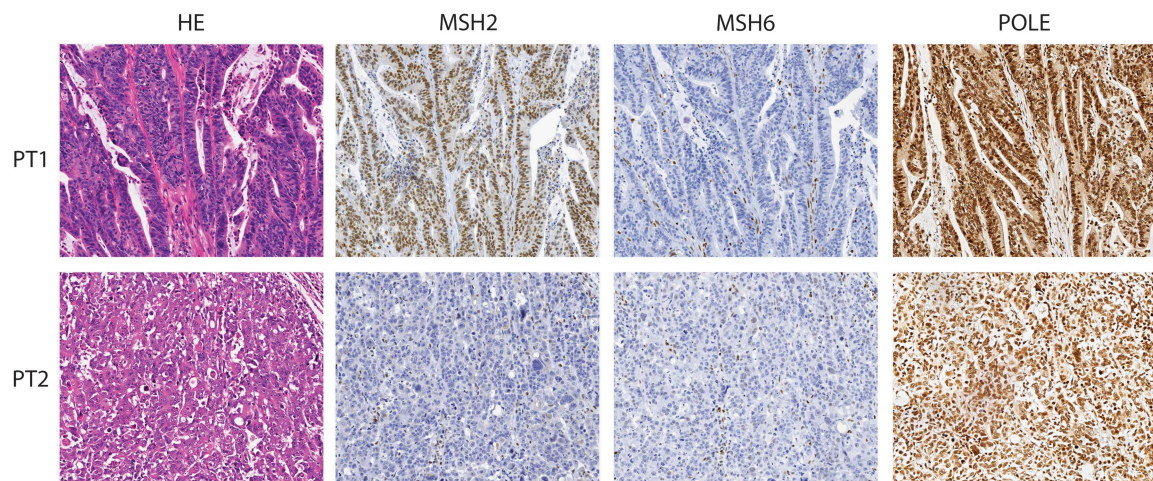


Figure 1 HE staining and MSH2, MSH6 and POLE immunohistochemistry (x20) of the MSI-H tumours from *POLE* variant carriers PT1 and PT2 (one family); both cases show MSH6 negative staining, with positive stromal cells (brown). PT2 also shows loss of MSH2 in tumour cells.

Table 1 Summary of somatic mutations in colorectal cancer genes in two tumours from *POLE* p.(Leu424Val) carriers (PT1 and PT2) from one family

Case	Gene.ref gene	DNA level (cDNA)	Protein	Chr	Start	End	Ref	Alt	Exonic func.ref gene	Pathogenic
PT1	<i>MSH6</i>	NM_000179.2:c.2629G>T	p.Glu877*	2	48027751	48027751	G	T	Stopgain SNV	Truncating
PT1	<i>MSH6</i>	NM_000179.2:c.2291C>T	p.Thr764Ile	2	48027413	48027413	C	T	Non-synonymous SNV	Unlikely pathogenic
PT1	<i>MSH6</i>	NM_000179.2:c.3725G>A	p.Arg1242His	2	48033421	48033421	G	A	Non-synonymous SNV	Unknown pathogenicity
PT1	<i>MSH6</i>	NM_000179.2:c.4000C>T	p.Arg1334Trp	2	48033789	48033789	C	T	Non-synonymous SNV	Unknown pathogenicity
PT1	<i>MSH2</i>	NM_000251.2:c.49G>A	p.Val17Ile	2	47630379	47630379	G	A	Non-synonymous SNV	Unlikely pathogenic
PT1	<i>MLH1</i>	NM_000249.2:c.31C>A	p.Leu11Met	3	37035069	37035069	C	A	Non-synonymous SNV	Unknown pathogenicity
PT1	<i>APC</i>	NM_000038.5:c.680A>G	p.Asp227Gly	5	112128177	112128177	A	G	Non-synonymous SNV	Unknown pathogenicity
PT1	<i>APC</i>	NM_000038.5:c.1778G>A	p.Trp593*	5	112170682	112170682	G	A	Stopgain SNV	Truncating
PT1	<i>APC</i>	NM_000038.5:c.2662G>A	p.Ala888Thr	5	112173953	112173953	G	A	Non-synonymous SNV	Unlikely pathogenic
PT1	<i>APC</i>	NM_000038.5:c.4540C>T	p.Pro1514Ser	5	112175831	112175831	C	T	Non-synonymous SNV	Unlikely pathogenic
PT1	<i>APC</i>	NM_000038.5:c.5117C>T	p.Ser1706Leu	5	112176408	112176408	C	T	Non-synonymous SNV	Unlikely pathogenic
PT1	<i>APC</i>	NM_000038.5:c.8314T>C	p.Ser2772Pro	5	112179605	112179605	T	C	Non-synonymous SNV	Unlikely pathogenic
PT1	<i>TP53</i>	NM_000546.5:c.523C>T	p.Arg175Cys	17	7578407	7578407	G	A	Non-synonymous SNV	Likely pathogenic
PT1	<i>TP53</i>	NM_000546.5:c.742C>T	p.Arg248Trp	17	7577539	7577539	G	A	Non-synonymous SNV	Likely pathogenic
PT1	<i>TP53</i>	NM_000546.5:c.916C>T	p.Arg306*	17	7577022	7577022	G	A	Stopgain SNV	Truncating
PT2	<i>MSH2</i>	NM_000251.2:c.643C>T	p.Gln215*	2	47637509	47637509	C	T	Stopgain SNV	Truncating
PT2	<i>APC</i>	NM_000038.5:c.2045G>A	p.Gly682Glu	5	112173336	112173336	G	A	Non-synonymous SNV	Likely pathogenic

No mutations were found in *KRAS*, *BRAF* and *PMS2*.

37, while a third brother developed liver cancer at age 27. The patient's mother died aged 31 because of unknown causes, probably cancer. Tumour tissue from an adenoma with early cancer and one adenoma with high-grade dysplasia was available for examination. The adenoma with cancer (estimated tumour percentage 50%) showed microsatellite instability and immunohistochemical loss of MSH2 and MSH6 protein staining in the absence of germline variants in *MSH2* and *MSH6*. A probably non-pathogenic heterozygous missense mutation, c.1550 C>T, p.(Ala517Val), in the *MSH2* gene was detected in the adenoma with early cancer but not in normal tissue. Testing for somatic mutations in other genes could not be performed because of the limited availability of tumour DNA. Hypermethylation of the *MSH2* promoter was not detected in the tumour or normal tissue of PT3. Microsatellite instability analysis of an adenoma with high-grade dysplasia, with an estimated percentage of cells with high-grade dysplasia of 65%, showed no microsatellite instability and normal staining of the DNA mismatch repair proteins MSH2 and MSH6, as well as MLH1 and PMS2. Tumour tissue and germline DNA from relatives of PT3 were not available.

Patient 4 (PT4) was diagnosed with a microsatellite stable colon cancer and polyposis at the age of 33. No tumour tissue was available for further analysis. Although a history of CRC was reported in both paternal and maternal branches of the family, the parents were not affected by polyposis and did not carry the *POLE* variant, indicating that the *POLE* variant in PT4 was probably *de-novo*. There was also no evidence for gonadal mosaicism in the parents; the sibling is not known to have polyposis. In a recent study, the same *POLE* variant was also detected as a *de-novo* occurrence in a patient with early onset CRC and polyposis.¹⁴

Interestingly, the germline *POLE* variant in the currently studied families (PT1, PT2 and PT3) is associated with a Lynch syndrome phenotype with MSI tumours and MSH6 or MSH2/MSH6 protein loss. This contrasts with previously identified *POLE* and *POLD1* germline variant carriers who developed microsatellite stable tumours.¹³ Somatic *POLE* mutations have been reported in both microsatellite stable and MSI tumours.^{10,12} The Lynch syndrome phenotype reported here is not because of the germline variants in the MMR genes but more likely the result of somatic inactivation (PT1 and PT2). The hypermutator phenotype associated with inherited *POLE* mutations suggests a causative role for the somatic mutations although the second hit could not be identified. A similar co-occurrence of somatic MMR and *POLE* mutations was recently shown in a sequencing effort of 147 CRC genomes. Eight of the eleven *POLE*-mutated tumours showed additional *MSH6* somatic mutations, and of these, five cases also showed *MSH2* mutations.¹² Moreover, MSI tumours with two somatic *MSH2* mutations, lacking MSH2 and MSH6 protein expression,²² or with loss of MLH1 protein staining in the tumour,^{23–25} have also been reported for patients with bi-allelic variants in the base excision repair gene *MUTYH*. Similarly to *POLE* germline variants, *MUTYH* missense variants can also induce somatic mutations in MMR genes, although the mechanism behind the co-occurrence of mutations in the different DNA repair defects remains elusive.

CONCLUSIONS

The three new families with *POLE* variants reported here bring the total number of reported families to 17. We have demonstrated that *POLE* germline variants can give rise to a Lynch syndrome-like phenotype, with MSI-H tumours displaying negative IHC for one of the MMR genes. IHC for *POLE* is not helpful in identifying currently known variants. We now recommend that testing for *POLE* should be considered when screening unexplained MSI-H tumours, and while

clinical surveillance of *POLE* carriers appears to be indicated from a relatively young age, further conclusions regarding clinical management should be based on a larger series than the currently identified patients.

CONFLICT OF INTEREST

The authors declare no conflict of interest.

ACKNOWLEDGEMENTS

This work was supported by the Dutch Cancer Society (UL2010-4656); the Association for International Cancer Research (10-0619); COST Action BM1206. We thank the Dutch Cancer Genetics Group, represented by: Dr A Wagner, Dr RH Sijmons, Dr CM Aalfs, Dr I Kluij, Dr N Hoogerbrugge, Dr E Gomez Garcia, Dr FH Menko, Dr TGW Letteboer and Dr FJ Hes for the contribution of multiple adenoma and familial CRC cases.

AUTHOR CONTRIBUTIONS

F AE and TVW drafted the manuscript; F AE, ARM and DR performed analysis and interpretation of data; CMK, MN, HFAV, JTW, DCGG, CMT, HM, FJH, ARM, MJL provided clinical input and obtained samples; F AE, MS and BVDA technical support; All authors read and corrected the draft of the manuscript; TVW, FJH, HFAV and HM obtained funding; TVW supervised all aspects of the study.

- 1 Venkatesan RN, Treuting PM, Fuller ED *et al*: Mutation at the polymerase active site of mouse DNA polymerase delta increases genomic instability and accelerates tumorigenesis. *Mol Cell Biol* 2007; **27**: 7669–7682.
- 2 Schaaper RM. Base selection, proofreading, and mismatch repair during DNA replication in *Escherichia coli*. *J Biol Chem* 1993; **268**: 23762–23765.
- 3 Garg P, Burgers PM. DNA polymerases that propagate the eukaryotic DNA replication fork. *Crit Rev Biochem Mol Biol* 2005; **40**: 115–128.
- 4 Seshagiri S. The burden of faulty proofreading in colon cancer. *Nat Genet* 2013; **45**: 121–122.
- 5 Preston BD, Albertson TM, Herr AJ. DNA replication fidelity and cancer. *Semin Cancer Biol* 2010; **20**: 281–293.
- 6 McCulloch SD, Kunkel TA. The fidelity of DNA synthesis by eukaryotic replicative and translesion synthesis polymerases. *Cell Res* 2008; **18**: 148–161.
- 7 Sugino A. Yeast DNA polymerases and their role at the replication fork. *Trends Biochem Sci* 1995; **20**: 319–323.
- 8 Morrison A, Bell JB, Kunkel TA, Sugino A. Eukaryotic DNA polymerase amino acid sequence required for 3'–5' exonuclease activity. *Proc Natl Acad Sci USA* 1991; **88**: 9473–9477.
- 9 Simon M, Giot L, Faye G. The 3' to 5' exonuclease activity located in the DNA polymerase delta subunit of *Saccharomyces cerevisiae* is required for accurate replication. *EMBO J* 1991; **10**: 2165–2170.
- 10 Yoshida R, Miyashita K, Inoue M *et al*: Concurrent genetic alterations in DNA polymerase proofreading and mismatch repair in human colorectal cancer. *Eur J Hum Genet* 2011; **19**: 320–325.
- 11 Cancer Genome Atlas Network. The Cancer Genome Atlas Network Comprehensive molecular characterization of human colon and rectal cancer. *Nature* 2012; **487**: 330–337.
- 12 Kim TM, Laird PW, Park PJ. The landscape of microsatellite instability in colorectal and endometrial cancer genomes. *Cell* 2013; **155**: 858–868.
- 13 Palles C, Cazier JB, Howarth KM *et al*: Germline mutations affecting the proofreading domains of *POLE* and *POLD1* predispose to colorectal adenomas and carcinomas. *Nat Genet* 2013; **45**: 136–144.
- 14 Valle L, Hernandez-Illan E, Bellido F *et al*: New insights into *POLE* and *POLD1* germline mutations in familial colorectal cancer and polyposis. *Hum Mol Genet* 2014; **23**: 3506–3512.
- 15 Hes FJ, Nielsen M, Bik CE *et al*: Somatic APC mosaicism: an underestimated cause of polyposis coli. *Gut* 2008; **57**: 71–76.
- 16 Middeldorp A, Jagmohan-Changur S, van Eijk R *et al*: Enrichment of low penetrance susceptibility loci in a Dutch familial colorectal cancer cohort. *Cancer Epidemiol Biomarkers Prev* 2009; **18**: 3062–3067.
- 17 Hes FJ, Ruano D, Nieuwenhuis M *et al*: Colorectal cancer risk variants on 11q23 and 15q13 are associated with unexplained adenomatous polyposis. *J Med Genet* 2013; **51**: 55–60.
- 18 De Jong AE, van Puijenbroek M, Hendriks Y *et al*: Microsatellite instability, immunohistochemistry, and additional PMS2 staining in suspected hereditary non-polyposis colorectal cancer. *Clin Cancer Res* 2004; **10**: 972–980.
- 19 Mensenkamp AR, Vogelaa IP, van Zelst-Stams WA *et al*: Somatic mutations in MLH1 and MSH2 are a frequent cause of mismatch-repair deficiency in Lynch syndrome-like tumors. *Gastroenterology* 2014; **146**: 643–646.

- 20 van Eijk R, Licht J, Schrupf M *et al*: Rapid KRAS, EGFR, BRAF and PIK3CA mutation analysis of fine needle aspirates from non-small-cell lung cancer using allele-specific qPCR. *PLoS One* 2011; **6**: e17791.
- 21 Chan TL, Yuen ST, Kong CK *et al*: Heritable germline epimutation of MSH2 in a family with hereditary nonpolyposis colorectal cancer. *Nat Genet* 2006; **38**: 1178–1183.
- 22 Morak M, Heidenreich B, Keller G *et al*: Biallelic MUTYH mutations can mimic Lynch syndrome. *Eur J Hum Genet* 2014; **22**: 1334–1337.
- 23 Cleary SP, Cotterchio M, Jenkins MA *et al*: Germline MutY human homologue mutations and colorectal cancer: a multisite case-control study. *Gastroenterology* 2009; **136**: 1251–1260.
- 24 Colebatch A, Hitchins M, Williams R, Meagher A, Hawkins NJ, Ward RL. The role of MYH and microsatellite instability in the development of sporadic colorectal cancer. *Br J Cancer* 2006; **95**: 1239–1243.
- 25 Lefevre JH, Colas C, Coulet F *et al*: MYH biallelic mutation can inactivate the two genetic pathways of colorectal cancer by APC or MLH1 transversions. *Fam Cancer* 2010; **9**: 589–594.