

Seasonal and habitat effects on the nutritional properties of savanna vegetation: potential implications for early hominin dietary ecology

Oliver C. C. Paine<sup>a,\*</sup>, Abigale Koppa<sup>b</sup>, Amanda G. Henry<sup>c</sup>, Jennifer N. Leichliter<sup>d</sup>, Daryl  
5 Codron<sup>e,f</sup>, Jacqueline Codron<sup>e,g</sup>, Joanna E. Lambert<sup>a,h</sup>, Matt Sponheimer<sup>a</sup>

<sup>a</sup> *Department of Anthropology, University of Colorado Boulder, Boulder, CO 80309 USA*

<sup>b</sup> *Department of Ecology and Evolution, State University of New York, Stony Brook, New York 11794, USA*

10 <sup>c</sup> *Faculty of Archaeology, Leiden University, Einsteinweg 2, 2333CC Leiden, The Netherlands*

<sup>d</sup> *Institut für Geowissenschaften, AG für Angewandte und Analytische Paläontologie, Johannes Gutenberg-Universität Mainz, 55128 Mainz, Germany*

<sup>e</sup> *Florisbad Quaternary Research Department, National Museum, PO Box 266, Bloemfontein, 9300, South Africa*

<sup>f</sup> *Centre for Environmental Management, University of the Free State, PO Box 339, Bloemfontein, 9300, South Africa*

<sup>g</sup> *Mammology Department, National Museum, PO Box 266, Bloemfontein, 9300, South Africa*

20 <sup>h</sup> *Environmental Studies Program and Department of Ecology and Evolutionary Biology, University of Colorado Boulder, Boulder, CO 80309 USA*

\* Corresponding aAuthor.: *oliver.paine@colorado.edu (O. Paine).*

**Abstract**

The African savannas that many early hominins occupied likely experienced stark seasonality and contained mosaic habitats (i.e., combinations of woodlands, wetlands, 30 grasslands, etc.). Most would agree that the bulk of dietary calories obtained by taxa such as *Australopithecus* and *Paranthropus* came from the consumption of vegetation growing across these landscapes. It is also likely that many early hominins were selective feeders that consumed particular plants/plant parts (e.g., leaves, fruit, storage organs) depending on the habitat and season within which they were foraging. Thus, improving our 35 understanding of how the nutritional properties of potential hominin plant foods growing in modern African savanna ecosystems respond to season and vary by habitat will improve our ability to model early hominin dietary behavior. Here, we present nutritional analyses (crude protein and acid detergent fiber) of plants growing in eastern and southern African savanna habitats across both wet and dry seasons. We find that many 40 assumptions about savanna vegetation are warranted. For instance, plants growing in our woodland habitats have higher average protein/fiber ratios than those growing in our wetland and grassland transects. However, we find that the effects of season and habitat are complex, an example being the higher protein levels we observe in the grasses and sedges growing in our Amboseli wetlands during the dry season. Also, we find 45 significant differences between the vegetation growing in our eastern and southern African field sites, particularly among plants using the C<sub>4</sub> photosynthetic pathway. This may have important implications for the contrasting dietary interpretations that stable

carbon isotope and dental microwear analyses have suggested for eastern and southern African *Paranthropus* species.

50

## **Introduction**

Many early hominin species are understood to have inhabited landscapes that were characterized by stark seasonality and mosaic habitats, just as modern African savannas are today (Dart, 1925; Howell and Bourliere, 1963; Wolpoff, 1980; Huntley, 55 1982; Vrba, 1995; Reed et al., 2013; Domínguez-Rodrigo, 2014). Though recent evidence suggests that eastern African *Australopithecus* likely consumed faunal resources (McPherron et al., 2010; Harmand et al., 2015), most agree that the bulk of dietary calories obtained by these early hominins came from plants. Additionally, many early hominins (i.e., pre-*Homo*) were probably eclectic feeders that consumed a variety of plant 60 types and plant parts (e.g., leaves, fruits, seeds, flowers, underground storage organs), and there is evidence that diets varied both between and within species (Ungar and Sponheimer, 2011). These variations were potentially driven, at least in part, by the effects that habitat and season have on the nutritional chemistry of savanna vegetation. Furthermore, due to inherent differences in climate and geology, these effects were likely 65 to have manifested in different ways across the eastern and southern African landscapes known to have been occupied by fossil hominins.

While no modern savanna ecosystem can serve as a direct analog for the African Plio-Pleistocene, an understanding of how the nutritional properties of modern savanna vegetation vary across habitats and seasons will ultimately improve models of early 70 hominin dietary ecology. Indeed, there is long history of using modern savanna plants to

investigate hominin feeding behavior (e.g., Carr, 1976; Peters and Maguire, 1981; Peters and O'Brien, 1981; Sept, 1986, 1996; Peters and Blumenschine, 1995; Andrews and Bamford, 2008; Copeland, 2009), and previous researchers have also investigated the seasonal and/or habitat variation of potential hominin plant foods (e.g., Peters and  
75 Maguire, 1981; Sept, 1986, 2001; Peters et al., 1984; Peters and Blumenschine, 1995; Copeland 2007, 2009). For example, Sept (2001) developed hypothetical plant diets for baboons, chimpanzees, modern hunter-gatherers, australopiths, and early *Homo* based on the adaptations and foraging capabilities each taxon may, or may not have had (e.g., increased craniodental robusticity, the use of tools, the use of fire). She then assessed  
80 abundance and seasonal availability of plant foods assigned to each taxon in one-hectare plots within two Kenyan semiarid riparian ecosystems, one located in the Turkana basin, northern Kenya, and the other in the Tsavo region of southern Kenya. While these sites are similar in vegetation, they differ in terms of rainfall and geological substrate. In particular, Sept (2001) found that non-megadont australopiths (e.g., *Australopithecus*  
85 *anamensis*, *Australopithecus afarensis*), without the aid of rudimentary digging tools to access underground plant organs, would have struggled to gain enough calories across seasons in the southern Kenyan site. In contrast, megadont australopiths (e.g., *Paranthropus aethiopicus*, *Paranthropus boisei*) using digging sticks to access underground foods (Brain, 1993; Sussman, 1998) would have fared reasonably well. Sept  
90 (2001) concluded that both taxa would have been successful at the Turkana site, despite lower precipitation, due to the fact that its volcanic soils allowed for more productive vegetative growth and thus less of a need to rely on underground plant organs for dietary calories.

In another study, Copeland (2009) examined the diets of chimpanzees living in  
95 relatively high-rainfall savannas (750–1200 mm/yr) and contrasted them with the plants  
available in semiarid savannas in northern Tanzania, under the premise that hominin  
fossils from the region are generally associated with more open, drier habitats. Copeland  
(2009) noted that fruit is scarce in semiarid savannas and that if early hominins habitually  
occupied these landscapes, as the fossil record suggests, they were unlikely to have been  
100 able to maintain the level of frugivory exhibited by moist-savanna chimpanzees, let alone  
those living in forested habitats such as Mahale National Park, Tanzania, and Kibale  
National Park, Uganda. Interestingly, despite the high prevalence of resources such as  
grasses within their habitats, savanna chimpanzees do not heavily utilize them but instead  
increase their home ranges to compensate for the patchier distribution of preferred fleshy  
105 fruits (Pruetz, 2006; Sponheimer et al., 2006). In this regard, Copeland (2009) concluded  
that hominins were probably not as dependent on fruit as savanna chimpanzees are today,  
and instead may have consumed grasses and *Acacia* (*Vachellia*) spp. in a manner more  
similar to baboons (*Papio* spp.; DeVore and Washburn, 1963; Altmann and Altmann,  
1970; Post, 1982; Altmann et al., 1987; Norton et al., 1987; Barton et al., 1993; Barton  
110 and Whiten, 1994; Altmann, 1998). She also suggested that the exploitation of  
underground organs (as proposed by Conklin-Brittain et al., 2002; Sponheimer et al.,  
2005; Wrangham, 2005) might have been an important component of hominin feeding  
behavior.

The studies highlighted above, and others, offer valuable insight into the way the  
115 heterogeneous nature of savanna landscapes likely influenced early hominin feeding  
behavior. However, they do not directly investigate how the nutritional chemistry (e.g.,

crude protein, dietary fiber, non-structural carbohydrates, lipids) of savanna vegetation varies across habitats and seasons, and in response to the inherent regional differences between eastern and southern Africa (e.g., soil types, rainfall modality, seasonal  
120 temperature fluctuations). To be sure, studies of African ungulate diets have investigated how the nutritional properties of graze and browse are affected by season and habitat, and have demonstrated that certain habitats offer higher quality resources at different times of the year due to factors such as rainfall patterns/levels, soil chemistry, and elevation (see Robbins, 1993; Prins and Van Langervelde, 2008, Searle and Shipley, 2008). However,  
125 while these studies are informative, many ungulates have specialized dentition and/or digestive capabilities that hominins most likely lacked. Thus, these studies do not speak directly to hominin feeding behavior. Also, these studies generally do not include plant organs that are specifically targeted by many primates such as inflorescences and underground storage organs.

130 Here, we begin to address these gaps by examining the spatiotemporal variation of two nutritional measures—crude protein and dietary fiber—in plants growing in savannas of eastern and southern Africa. The questions we address include: 1) does our eastern African site, with its volcanic soil and tropical climate, contain plants with higher protein/fiber ratios, on average, compared to those growing in our South African site? 2)  
135 do plant categories have different protein/fiber ratios in different habitats? For example, do grasses growing in woodlands have higher protein-ratios than those growing in more open environments? 3) do habitats with higher dicot/monocot ratios, such as woodlands, contain plants with higher protein/fiber ratios than monocot-dominated habitats, such as

grasslands and wetlands? 4) are the effects of seasonality habitat specific, such as in  
140 wetlands where plants have year-round access to water?

## Methods

We collected plant samples from wet and dry seasons in The Cradle Nature  
Reserve (The Cradle), South Africa (July 2014 and January 2015), and Amboseli  
145 National Park (Amboseli), Kenya (May 2016 and August 2017). The Cradle was chosen  
because it sits in the Sterkfontein Valley, which is home to several of the major hominin  
fossil bearing sites in South Africa. Its dolomitic soils and unimodal rainfall contrast with  
Amboseli, which was chosen because its volcanic soils, bimodal rainfall pattern, and  
extensive wetlands likely characterized many of the environments inhabited by eastern  
150 African hominins, including *P. boisei*.

For this study, we have grouped our transects (five in The Cradle and four in  
Amboseli) into three broad habitat categories—grassland, woodland, and wetland  
(following Reed et al., 2013)—that are representative of landscapes that early hominins  
are thought to have inhabited. Grasslands had <10% woody cover, woodlands contained  
155 trees 8–20 m in height that covered >40% of the transect, and wetlands were treeless  
transects containing permanent water sources. The transects were randomly placed within  
each habitat type and consisted of Modified-Whittaker sampling plots measuring 20m by  
50m, with subplots of varying sizes nested within (see Stohlgren et al., 1995). Most  
transects within each field site were many kilometers away from each other, with the  
160 closest two roughly half a kilometer apart—a wetland and woodland within The Cradle.  
We collected four individual samples of the most abundant grass, sedge, tree, and forb

species (when available) as determined according to methods outlined in Stohlgren et al. (1995). ‘Forbs’ in this study are non-woody plants that are neither grasses nor sedges. Samples were separated into their constituent organs for analyses (e.g., seed, leaf, fruit, 165 and storage organ). All fruit within our transects was sampled regardless of abundance because most fruit, though generally scarce on savanna landscapes, represents a resource that was likely targeted and exploited by hominins (Suzuki, 1969; Dunbar, 1976; McGrew et al., 1981; Nishida and Uehara, 1983; Peters and Vogel, 2005).

In addition to designating three broad habitat categories, we grouped our samples 170 into three categories of plant foods based on organs/structures known to be eaten by primates: leaves, reproductive organs (inflorescences of grasses and sedges, fruit, and flowers), and storage organs (tubers, rhizomes, and stolons). We do not include stems or roots in this current study. We analyzed our fruits whole, including the exocarp, flesh, and seeds, as this is how baboons typically consume them. All of our fruits are relatively 175 small (<3 cm in diameter) and none had a thick rind. Similarly, grass and sedge seeds were analyzed as whole inflorescences, which for species with panicles include primary and secondary axes and spatheoles. Underground storage organs (USOs) were harvested when present in association with their above ground parts.

We dried wet samples in the field in Excalibur® dehydrators at 40° C, sealed dried 180 samples in paper bags with desiccant, and exported them to the Nutritional and Isotopic Ecology Lab (NIEL) at the University of Colorado Boulder for nutritional analyses. We present results for crude protein (CP) and acid detergent fiber (ADF) as a percentage of dry weight in the form of protein/fiber ratios (CP/ADF; Supplementary Online Material (SOM) File S1). We chose this ratio measurement because it is a widely used proxy for



185 overall forage quality (Robbins, 1993; McNaughton and Georgiadis, 1986). Crude  
protein was measured with a LECO® FP 528 nitrogen analyzer using the standard %N ×  
6.25 conversion to obtain %CP. ADF was measured with an ANKOM® 2000 fiber  
analyzer within a sequential series of dietary fiber analyses—i.e., a single sample was  
analyzed for neutral detergent fiber (NDF), ADF, and acid detergent lignin (ADL) in that  
190 order (see Terrill et al., 2010). We chose ADF as a measure of fiber (as opposed to NDF  
or crude fiber) because it theoretically represents the fiber fraction without  
hemicelluloses, which are at least partially digested by primates (Lambert, 1998). Thus,  
ADF is a more appropriate measure of the dietary fiber that is largely indigestible to  
mammals, such as hominins, without specialized digestive systems.

195 Our protein/fiber ratios were natural log-transformed and two three-factor  
analysis of variance (ANOVA) tests were performed. One analyzed the effects of plant  
category, habitat, and season on protein/fiber ratios and the other analyzed the effects of  
field site, habitat, and season. We could not run a four-factor ANOVA with all variables  
combined due to the fact that not all plant categories are represented seasonally in each  
200 field site. Kruskal-Wallis tests with multiple comparisons using the Steel-Dwass method,  
when appropriate, were run for single factor comparisons. Our figures include the  
average protein/fiber ratios reported by Rothman et al. (2006) for foods consumed by  
eastern gorillas (*Gorilla berengei*) in Bwindi Impenetrable National Park, Uganda. We  
use gorilla foods, as opposed to chimpanzee foods, because chimpanzee diets are heavily  
205 reliant on fleshy fruits, and we have relatively few fruits in our sample given their  
scarcity in savanna habitats. That being said, the gorilla protein/fiber ratios are meant to  
situate our data in a hominoid dietary context, and are not meant to imply anything about

what hominins did, or did not, eat. All statistical analyses were performed in JMP<sup>®</sup> Pro 13.0.0 (SAS Institute, 2016). We set our significance level at  $\alpha = 0.05$ .

210           Importantly, we note that Amboseli (and most of the surrounding region) was in the midst of a historic drought when we collected our dry season samples. Thus, the samples we collected during this time potentially represent the extremes of variation for any given plant taxon.

## 215 **Results**

Our three-factor ANOVA examining plant categories, habitat, and season shows that protein/fiber ratios are significantly influenced by plant category ( $p = 0.0001$ ) and habitat ( $p = 0.0002$ ), but, unexpectedly, not by season ( $p = 0.4282$ ). None of the interactions were significant, though the interaction between plant category and habitat  
220 was the strongest and closest to reaching significance ( $p = 0.0556$ ; Table 1). Leaves and reproductive organs have higher protein/fiber ratios than storage organs and vegetation in woodland habitats skews higher than vegetation found in wetlands and grasslands.

225

Our three-factor ANOVA examining field site, habitat, and season reveals that field site and habitat strongly influence our protein/fiber ratios ( $p < 0.0001$ ), yet their interaction is not significant ( $p = 0.1354$ ; Table 2). Once again, season does not significantly influence protein/fiber ratios, but its interactions with habitat and field site

230 do. On the whole, the vegetation in Amboseli has higher protein/fiber ratios and, once again, our woodland transects are driving the differences between habitats.

## 235 **Discussion**

Our study illuminates the nutritional properties of an array of taxonomic and functional plant groups that are directly relevant to primate and hominin feeding behavior and quantifies temporal differences across habitats at two spatial scales—regional and local. For the most part, our results are consistent with received wisdom about savanna  
240 plant nutrients. First and foremost, our data reveal strong differences between eastern and southern African field sites, an expected result due to inherent climatic and geological differences between the two regions. Other results were also expected, such as the higher protein/fiber ratios of woodland plants and lower ratios for storage organs. However, some results, such as the lack of seasonal differences within habitats, were less expected.  
245 We discuss these issues in more detail below.

### *Field site comparisons*

Our study cannot speak comprehensively to the broader, regional differences that exist between eastern and southern African savanna ecosystems and how they may have  
250 influenced differences in hominin feeding behavior across large geographical ranges. We have only sampled the vegetation from one field site within each region of the continent, and each field site has its own biogeographical history and local patterns of biodiversity

that set it apart from neighboring landscapes as much as they do from one another. For example, the South African Highveld is a distinct geological and floral region within  
255 southern Africa—one only needs to travel a few hundred kilometers from the fossil-bearing sites to reach the Lowveld, which does not experience freezing temperatures (Acocks, 1953; Mucina and Rutherford, 2011).

Nonetheless, the strong differences we found between the two fields sites (Table 2) are certainly influenced by broader, regional differences between eastern and southern  
260 Africa. For one, soil chemistry, which heavily affects the plants growing upon them (Anderson and Talbot, 1965; Cole, 1982; McNaughton, 1983; Mutanga et al., 2004), is very different at the two sites. The Cradle is characterized by dolomitic soils whereas Amboseli is located in a volcanic basin, and, as noted in the Introduction, volcanic soils were cited by Sept (2001) as the reason for increased soil fertility in her more productive  
265 transects. Also, the seasonality each site experiences differs at a regional level. There are two annual rainy and dry seasons in many parts of eastern Africa, including Amboseli, whereas the Highveld experiences only one of each (Herrmann and Mohr, 2011). Perhaps most importantly, the Highveld, with an elevation of ~1480 m, experiences a dry season marked by occasional temperatures below freezing, which result in areas of measurable  
270 frost (Schulze, 1997). Amboseli, although at an elevation of ~1130 m, is roughly 200 km south of the equator and does not experience such pronounced temperature fluctuations across seasons (Williams, 1972).

### *Habitat comparisons*

275 We find that woodland habitats have vegetation with higher protein/fiber content  
than vegetation in grassland and wetland habitats (Figure 1; Table 3). This was expected  
as woodlands, by definition, have higher dicot/monocot ratios and tree leaves generally  
have higher protein levels compared to monocots such as grasses and sedges. However, it  
is important to note that woodlands also provide shade and water storage for plants  
280 growing in the understory, which in turn can lead to higher nutrient content. Also, there  
are complex relationships between grasses and trees that can positively affect the  
abundance and nutrient levels of grasses, particularly in certain *Acacia*-dominated  
woodlands (Knoop and Walker, 1985; Scholes and Archer, 1997). In fact, our wet season  
*Acacia* woodland grass leaves (one transect in Amboseli and one in The Cradle) have  
285 significantly higher protein/fiber ratios compared to grass leaves growing in other  
habitats (Kruskal-Wallis:  $p < 0.0001$ ). This would tend to support arguments that  
woodland habitats represented preferred hominin feeding locations (Sikes 1994).

290

### *Seasonal comparisons*

Neither ANOVA reveals significant seasonal effects on the protein/fiber ratios of  
295 our plant samples. This is unexpected because seasonal climate changes are known to  
have some of the biggest effects on phenological, and hence, biochemical changes in  
plants throughout their life cycle (Schulze, 1997). However, the significant interactions

among season, habitat, and field site in our second ANOVA (Table 2) suggest underlying seasonal complexities that are masking larger scale, landscape-wide differences. When  
300 we dig more deeply into our dataset, we find several anomalies that are driving our ANOVA results, suggesting that our data do, in fact, reveal some strong seasonal differences but that their occurrence and direction are mediated by field site, habitat, and plant category. We highlight two examples below.

305 The leaves of wetland grasses and sedges in Amboseli In our Amboseli wetland transects, the protein/fiber ratios of the leaves of grass and sedge species for which we have wet and dry season data (five species) show an increase in protein/fiber ratios during the dry season ( $p = 0.0118$ ; Fig. 2), a reversal of the trend we observe in most other plants.

310

Because our Amboseli wetland transects offer a stable water source year-round, one might assume that many of the plants growing within them are buffered against seasonal changes at a fundamental level. Yet, the significant increase in dry season crude  
315 protein content (as opposed to a decrease in ADF;  $p = 0.0197$ ) that is driving the increased protein/fiber ratios in our samples is perhaps surprising in light of the fact that Amboseli was experiencing a historic drought during our collections. This increase in crude protein content may actually be an indirect result of the broad scale seasonal stresses that affect the large mammalian fauna in the park. During the dry season in  
320 Amboseli, and elsewhere, the larger mammals understandably tend to congregate near the

permanent wetlands. As such, this concentration of fauna can lead to an increase in soil nitrogen due to higher amounts of urea being added to the wetland habitats (Ruess and McNaughton, 1984), which in turn increases soil fertility. The increase in protein that we see in dry season wetland monocots likely reflects this higher soil fertility.

325

Storage organs in The Cradle. Because storage organs contain the caloric reserves a plant maintains for regrowth after dormancy, one might hypothesize that they are also somewhat buffered against seasonal effects. When we examine the storage organs in our analyses, we find that those we sampled in The Cradle show significant increases in  
330 protein/fiber ratios during the dry season (Fig. 3;  $p = 0.0002$ ), whereas those in Amboseli remain unchanged ( $p = 0.4589$ ). The increased protein/fiber ratios of samples from The Cradle are driven by both lower ADF levels and significantly higher protein content (Kruskal-Wallis:  $p = 0.0004$ ). This may be the effect of the starker seasonality we see in the Highveld whereby larger energy reserves may be necessary for survival across the  
335 longer, colder dry season. There is one species that does not fit this trend, *Hypoxis hemerocallidea*, which represents the extreme outlier in our wet season sample and the second highest value in our dry season sample (Fig. 3). However, it is toxic when eaten raw and is only used by humans medicinally, though several of its congeners are known to be human and primate foods (Peters et al., 1992; van Wyk and Gericke, 2000). It is  
340 also worth noting that there are significantly higher protein/fiber ratios (Kruskal-Wallis:  $p < 0.0001$ ; no overlapping values) in dry season storage organs growing in our wetland transect, including the rhizomes of *Typha capensis* and *Juncus effusus*.

345

*Implications for hominins*

Habitat, season, abundance, and selectivity Our analyses reveal that vegetation with the highest protein/fiber ratios is generally found in the woodland habitats at both field sites, and woodlands are a consistent, if not dominant component of australopith  
350 paleoenvironmental reconstructions (e.g., Sikes, 1994; Reed, 1997; Bobe et al., 2002; Reynolds et al., 2007; de Ruiter et al., 2008; Behrensmeyer and Reed, 2013). Nonetheless, wetlands appear to seasonally offer resources with relatively high protein/fiber ratios, potentially on landscapes where other dry season habitats show a decline. In this regard, while the wet season plants in our study are generally ‘better’  
355 candidates for hominin foods from a protein/fiber ratio perspective, it is clear that the dry season vegetation is not necessarily ‘worse’ across the board.

For instance, if we use the protein/fiber ratios of Bwindi gorilla foods as a gauge (mean  $\ln CP/ADF = -1.15$ ,  $SD = 0.89$ ; Rothman et al., 2006), we find that vegetation within these parameters exists across seasons, within all habitats (Fig. 1). Of course, we  
360 are not suggesting that all plants in our study within this range would have been edible for hominin foragers. However, these data demonstrate that adequate, if not preferred dietary resources can be obtained across habitats and seasons for highly selective, generalist herbivores, which many hominins may have been. Indeed, savanna baboons, which are generalist feeders, take advantage of the rarer, preferred resources when they  
365 are available while eating more ubiquitous foods year-round, such as the leaves and corms of grasses and sedges (Barton et al., 1993; Barton and Whiten, 1994; Altmann,



1998). For example, Barton et al. (1993) analyzed the protein/fiber ratios (CP/ADF) of acacia seeds eaten by baboons in the Laikipia Plateau, Kenya, and reported an untransformed value of 12.89—almost five times higher than the highest untransformed value from our samples. However, these seeds represented only 3.3% of their total diet and are not indicative of the general protein/fiber content of baboon foods. In fact, by looking at the food groups that each account for 10% or more of Laikipia baboon diet (*Acacia* flowers, 18%; grass blades, 12.4%; fruits, 11.7%; sedge bulbs, 11.4%), we find a mean, untransformed protein/fiber ratio of 0.75. Within our study, 75 samples (~14%) fall above this protein/fiber threshold representing all habitats and plant types, as well as both seasons.

It is important to note that the relative abundance of food resources is a crucial factor to incorporate when studying the dietary behavior of an organism. The behavioral calculus that many generalist herbivores have to make is essentially a cost/benefit analysis. On average, high-nutrient, energy-rich foods are found in low densities within savanna landscapes (Suzuki, 1969; Dunbar, 1976; McGrew et al., 1981; Nishida and Uehara, 1983; Peters, 1987) and their exploitation requires more energy and time directed towards their discovery and harvesting (Altmann and Altmann, 1970, Altmann, 1974). Conversely, while savanna habitats are replete with lower-nutrient foods, more energy and time must be directed towards their consumption and digestion (Searle and Shipley, 2008).

Relative abundance is accounted for in our study, as we focused our sampling on the most abundant taxa; however, certain items are undoubtedly overrepresented in our dataset. As noted, we sampled any and all fruits we found in our transects, regardless of

390 abundance, because such items are actively sought after by baboons and were likely to  
have been readily exploited by hominins. Nonetheless, relative abundance is a key factor  
to incorporate when reconstructing hominin dietary behavior. For example, grasses are  
often overlooked or dismissed as potential resources for hominins yet their nutritional  
properties are highly variable, with many having some of the highest protein/fiber ratios  
395 within their respective habitats (Paine et al., 2018). What is more, grasses are not only  
ubiquitous, they are a requirement for any definition of a savanna landscape so at the very  
least, their sheer abundance must preclude their removal from hominin dietary models.

Hominins and C<sub>4</sub> foods Since many of the earlier studies of potential hominin plant foods  
400 were concluded (e.g., Carr, 1976; Peters and Maguire, 1981; Peters and O'Brien, 1981;  
Sept, 1986; Peters and Blumenschine, 1995; Andrews and Bamford, 2008; Copeland,  
2009), new factors to incorporate in our exploration of early hominin diet have emerged.  
Most notably, stable carbon isotope analyses reveal that hominins began to incorporate  
significant amounts of C<sub>4</sub> foods into their diets beginning ~3.75 Ma (Cerling et al., 2013;  
405 Sponheimer et al., 2013; Wynn et al., 2013; Levin et al., 2015). Thus, if the bulk of early  
hominin dietary carbon was derived from the direct consumption of vegetation, these C<sub>4</sub>  
resources were most likely to have been the grasses and/or sedges that represent the vast  
majority of C<sub>4</sub> plants on African savanna landscapes (Ungar and Sponheimer, 2011;  
Sponheimer et al., 2013). C<sub>4</sub> forbs and plants using CAM photosynthesis may also have  
410 influenced the isotopic signatures of early hominins, but they were likely only a minor  
component of their diets as they are fairly scarce within these habitats (Lüttge, 2004).

Given the above, a central question facing researchers studying early hominin dietary ecology is why *P. boisei* and *Paranthropus robustus*, which share highly derived craniodental adaptations believed to be directly related to diet, have such fundamentally  
415 different results from isotopic and dental microwear analyses. The stable carbon isotope compositions for the southern African species, *P. robustus*, suggest a mixed diet of C<sub>3</sub> and C<sub>4</sub> foods (Sponheimer et al., 2006) and dental micro- and macrowear analyses reveal a significant degree of hard object feeding (Scott et al., 2005; Towle et al., 2017). This evidence aligns with morphological interpretations suggesting that the large, thickly  
420 enameled molars and robust craniomandibular morphology of *Paranthropus* were direct adaptations to a diet consisting of hard, obdurate foods that may have included C<sub>3</sub> tree nuts and hard seeds (Leakey, 1959; Tobias, 1967; Jolly, 1970; Rak, 1983; Demes and Creel, 1988; Strait et al., 2008, 2013; Constantino et al., 2010, 2011; Smith et al., 2015). In stark contrast, the microwear of *P. boisei*, the hyperrobust eastern African species,  
425 shows no evidence of hard object feeding and the results from stable carbon isotope analyses indicate a diet of ~80% C<sub>4</sub> foods (Ungar et al., 2008; van der Merwe et al., 2008; Cerling et al., 2011). The question then becomes: why did C<sub>4</sub> foods dominate the diet of *P. boisei*, but not its congener, *P. robustus*?

If we isolate all of the C<sub>4</sub> plants in our analyses and compare them across seasons  
430 within each field site, we find clear differences between the C<sub>4</sub> vegetation in Amboseli versus The Cradle (Fig. 4). Among the four categories in Figure 4, all differences are significant except for the plants collected during the wet and dry seasons at Amboseli (Table 4). This suggests that C<sub>4</sub> plants represent a more stable food resource throughout the year for herbivores in Amboseli compared to The Cradle. If we assume that the

435 regional differences between eastern and southern Africa today existed, to some degree,  
in the past, then our data suggest that these differences between C<sub>4</sub> plants may have  
important implications for the diet of *Paranthropus*.

440

If one accepts the monophyly of *Paranthropus*, with *P. aethiopicus* as a potential stem  
ancestor (Strait et al., 1997; Wood and Constantino, 2007), the robust craniodental  
445 adaptations that characterize the genus would have been present in the *Paranthropus*  
species that dispersed southward from eastern Africa. Could it be that the ancestor of *P.*  
*robustus* was simply unable to find nutritionally adequate C<sub>4</sub> foods in the Highveld year-  
round, and thus had to alter its diet accordingly? This is certainly plausible based on the  
data we have presented but, again, our study is not comprehensive enough to legitimately  
450 test such a hypothesis. Also, it is important to note that some *Australopithecus africanus*  
specimens living in the Highveld ate significant amounts of C<sub>4</sub> foods, with stable carbon  
isotope compositions that overlap the lower range of *P. boisei* (Ungar and Sponheimer,  
2011; Sponheimer et al., 2013). This attests to the potential of C<sub>4</sub> plants in the Pliocene  
Highveld as staple resources for hominins. However, there is considerable variation  
455 among the carbon isotopic data for *A. africanus* and *P. robustus* (unlike the relative lack  
of variation in *P. boisei* carbon isotope compositions across large spatial and temporal  
scales; Lee-Thorp et al., 1994; Sponheimer and Lee-Thorp, 1999; van der Merwe et al.,

2003; Cerling et al., 2011; Sponheimer et al., 2006b, 2013), which may indicate that C<sub>4</sub> resources were consumed mostly in the wet season and/or woodlands, as our data  
460 suggest, with open grassland C<sub>4</sub> foods being rejected. This certainly makes sense in the context of other research positing that woodlands, in addition to offering higher quality food, may have offered better protection from predators and safe sleeping sites for early hominins (Susman et al., 1984; Sept, 1994; Sikes, 1994).

A woodland-based dietary reconstruction for *P. robustus* also fits with the habitat  
465 reconstructions proposed by de Ruiter et al. (2008), who argued that this species was more strongly associated with closed habitat taxa and thus may have adhered to more wooded habitats within savanna landscapes. Modern chimpanzees living in savannas spend most of their time in the wooded portions of their home ranges (Pruetz, 2006; Yoshikawa and Ogawa, 2015), though they largely avoid eating the C<sub>4</sub> plants among  
470 them, which contrasts with our understanding of most hominin feeding behavior in similar environments (Sponheimer et al., 2006). However, the predominantly C<sub>3</sub>, chimpanzee-like stable isotopic signatures of *A. anamensis* and *Ardipithecus ramidus* (White et al., 2009; Cerling et al., 2013; Sponheimer et al., 2013) might indicate that they, like contemporary chimpanzees, favored tree-based resources in woodland (or  
475 other) habitats.

### *Limitations and future directions*

While protein/fiber ratios employed here are a useful and important proxy for the palatability of primate plant foods, they by no means represent a complete nutritional  
480 analysis. For instance, they do not account for the antifeedants found in many savanna

plants that may have potentially hindered their palatability for hominin consumers. For example, savanna grasses tend to have higher amounts of silica in their tissues whereas tree leaves are generally more lignified, and contain higher amounts of secondary compounds that are potentially toxic to mammalian herbivores (Robbins, 1993; Skarpe  
485 and Hester, 2008). Also, season and habitat may strongly influence other important nutritional components within plant types such as monosaccharides, lipids, micronutrients, and water content. These factors are undeniably important to account for when investigating hominin dietary behavior and will be investigated in future analyses.

It is also important to note that protein/fiber content is not always the appropriate  
490 nutritional currency to use when exploring hominin feeding behavior, particularly given the recent emphasis on underground storage organs as potentially important hominin foods (e.g., Laden and Wrangham, 2005; Dominy et al., 2008; Wrangham et al., 2009; Dominy, 2012; Lee-thorp et al., 2012). Many underground storage organs are principally consumed as a source of energy (starch), rather than a source of protein, and energy  
495 content is a crucial parameter to incorporate into investigations of hominin dietary ecology. That being said, it is interesting that our data show seasonal increases in storage organ protein/fiber ratios in The Cradle, suggesting that their importance to hominins in similar environments may have been cyclical, as others have suggested (e.g., Laden and Wrangham, 2005; Wrangham et al., 2009).

500

## **Conclusions**

In a broad sense, our study suggests that the variation in the protein/fiber ratios of savanna vegetation can be reliably predicted by habitat, plant type, and field site in a  
505 manner that conforms to expected patterns. Most clearly, plants growing in the volcanic soils and tropical climate of Amboseli have higher protein/fiber ratios, on average, when compared to plants growing in The Cradle. Particularly, there are highly significant differences between the C<sub>4</sub> plants at the two sites, which may have important implications for the isotopic and microwear differences observed between eastern and southern  
510 *Paranthropus* species. Also, our woodland transects contain plants, both dicots and monocots, with higher protein/fiber ratios compared to those growing in other habitats, regardless of season.

However, though we generally observe declines in protein/fiber ratios during the dry season, our analyses reveal that seasonal variations are complex. The manner in  
515 which wet and dry seasons affect the vegetation in our eastern and southern African field sites is significantly different, and certain habitats and/or plant parts do not respond to seasonality in a way that mirrors others in our study—a case in point being the increase in protein/fiber levels from wet season to dry season of the grass and sedge leaves growing in our Amboseli wetland transects, and in the storage organs sampled from The Cradle.

520 If we are to assume that most hominin species were eclectic feeders living within savanna landscapes, future models of their dietary behavior will need to incorporate these complexities. No reconstruction of hominin feeding behavior will ever be completely accurate just as no modern landscape can serve as a perfect analog for Plio-Pleistocene hominin habitats. Yet, by investigating how habitat and seasonal dynamics play out in  
525 modern ecological systems, we can only improve our understanding early hominin

dietary behavior. In particular, we must acknowledge the regional differences between eastern and southern African savannas as a means to better understand the potential ecological differences between the hominin species that inhabited them.

### 530 **Acknowledgments**

We thank James Loudon, Alex Cowper, Nicholas Gakuu, Brandon Kline, and, especially, Antje Hutschenreuther for their help in the field. We would also like to thank Lee Berger, the Cradle Nature Reserve, Kenjara Lodge, the British Institute in Eastern Africa, the Kenyan Wildlife Service, and the National Museums of Kenya. This work  
535 was supported by The Leakey Foundation (grant # 1134801-1-75898), the Wenner-Gren Foundation (grant #8965), the National Science Foundation (grant #1613421), the Max Planck Society, and the University of Colorado Boulder. It was also funded in part by the European Research Council (ERC) under the European Union’s Horizon 2020 research and innovation program under grant agreement number STG–677576 (“HARVEST”).  
540 This is a research product, in whole or in part, of the Nutritional and Isotopic Ecology Lab (NIEL) at CU Boulder.

### **References**

- Acocks, J.P.H., 1953. Veld types of South Africa. Government Printer, Pretoria.
- 545 Altmann, S.A., 1974. Baboons, space, time, and energy. *American Zoologist*. 14, 221–248.
- Altmann, S.A., 1998. *Foraging for Survival: Yearling Baboons in Africa*. University of Chicago Press, Chicago.



- Altmann, S.A., Altmann, J., 1970. Baboon Ecology: African Field Research. University  
550 of Chicago Press, Chicago.
- Anderson, G., Talbot, L., 1965. Soil factors affecting the distribution of the grassland  
types and their utilization by wild animals on the Serengeti Plains, Tanganyika. *The  
Journal of Ecology*. 33–56.
- Andrews, P., Bamford, M., 2008. Past and present vegetation ecology of Laetoli,  
555 Tanzania. *Journal of Human Evolution*. 54, 78–98.
- Barton, R.A., Whiten, A., 1994. Reducing complex diets to simple rules: food selection  
by olive baboons. *Behavioral Ecology and Sociobiology*. 35, 283–293.
- Barton, R., Whiten, A., Byrne, R., English, M., 1993. Chemical composition of baboon  
plant foods: implications for the interpretation of intra- and interspecific differences in  
560 diet. *Folia Primatologica*. 61, 1–20.
- Barton, R.A., Whiten, A., 1994. Reducing complex diets to simple rules: food selection  
by olive baboons. *Behav. Ecol. Sociobiol.* 35, 283–293.
- Behrensmeyer, A.K., Reed, K.E., 2013. Reconstructing the habitats of *Australopithecus*:  
Paleoenvironments, site taphonomy, and faunas. In: Reed, K.E., Fleagle, J.G., Leakey,  
565 R.E. (Eds.), *The Paleobiology of Australopithecus*. Springer, Dordrecht, pp. 41–60.
- Bobbe, R., Behrensmeyer, A.K., Chapman, R.E., 2002. Faunal change, environmental  
variability and late Pliocene hominin evolution. *Journal of Human Evolution* 42, 475–  
497.
- Carr, C.J., 1976. Plant ecological variation and pattern in the Lower Omo Basin. In:  
570 Coppens Y., F. Clark, H., Isaac, G., Leakey, R. (Eds.), *Earliest Man and Environments  
in the Lake Rudolf Basin*. University of Chicago Press, Chicago, pp. 432–467.

- Cerling, T.E., Manthi, F.K., Mbua, E.N., Leakey, L.N., Leakey, M.G., Leakey, R.E.,  
Brown, F.H., Grine, F.E., Hart, J.A., Kaleme, P., 2013. Stable isotope-based diet  
reconstructions of Turkana Basin hominins. *Proceedings of the National Academy of*  
575 *Sciences USA* 110, 10501–10506.
- Cole, M., 1982. The influence of soils, geomorphology and geology on the distribution of  
plant communities in savanna ecosystems. In: Huntley, B.J., Walker, B.H. (Eds.),  
*Ecology of Tropical Savannas*. Springer, Berlin, pp. 145–174.
- Conklin-Brittain, N.L., Wrangham, R.W., Smith, C.C., 2002. A two-stage model of  
580 increased dietary quality in early hominid evolution: the role of fiber. In: Ungar, P.S.,  
Teaford, M.F. (Eds.), *Human Diet: Its Origin and Evolution*. Bergin & Garvey,  
Westport, pp. 61–76.
- Constantino, P.J., Lee, J.J.-W., Chai, H., Zipfel, B., Ziscovici, C., Lawn, B.R., Lucas,  
P.W., 2010. Tooth chipping can reveal the diet and bite forces of fossil hominins.  
585 *Biology Letters* 6, 826–829.
- Constantino, P.J., Lee, J.J.-W., Morris, D., Lucas, P.W., Hartstone-Rose, A., Lee, W.-K.,  
Dominy, N.J., Cunningham, A., Wagner, M., Lawn, B.R., 2011. Adaptation to hard-  
object feeding in sea otters and hominins. *Journal of Human Evolution* 61, 89–96.
- Cooper, S.M., Owen-Smith, N., Bryant, J.P., 1988. Foliage acceptability to browsing  
590 ruminants in relation to seasonal changes in the leaf chemistry of woody plants in a  
South African savanna. *Oecologia* 75, 336–342.
- Copeland, S.R., 2007. Vegetation and plant food reconstruction of lowermost Bed II,  
Olduvai Gorge, using modern analogs. *Journal of Human Evolution* 53, 146–175.

- Copeland, S.R., 2009. Potential hominin plant foods in northern Tanzania: semi-arid savannas versus savanna chimpanzee sites. *Journal of Human Evolution* 57, 365–378.
- 595
- Dart, R.A., 1925. *Australopithecus africanus* the man-ape of South Africa. *Nature* 115, 195–199.
- de Ruiter, D.J., Sponheimer, M., Lee-Thorp, J.A., 2008. Indications of habitat association of *Australopithecus robustus* in the Bloubank Valley, South Africa. *Journal of Human Evolution* 55, 1015–1030.
- 600
- Demes, B., Creel, N., 1988. Bite force, diet, and cranial morphology of fossil hominids. *Journal of Human Evolution* 17, 657–670.
- DeVore, I., Washburn, S.L., 1963. Baboon ecology and human evolution. In: Howel, F.C., Bourlière, F. (Eds.), *African Ecology and Human Evolution*. Aldine Publishing Company, Chicago, pp. 335–367.
- 605
- Domínguez-Rodrigo, M., 2014. Is the “savanna hypothesis” a dead concept for explaining the emergence of the earliest hominins? *Current Anthropology* 55, 59–81.
- Dominy, N.J., 2012. Hominins living on the sedge. *Proceedings of the National Academy of Sciences USA* 109, 20171–20172.
- 610
- Dominy, N.J., Vogel, E.R., Yeakel, J.D., Constantino, P., Lucas, P.W., 2008. Mechanical properties of plant underground storage organs and implications for dietary models of early hominins. *Evolutionary Biology* 35, 159–175.
- Dunbar, R.I., 1976. Australopithecine diet based on a baboon analogy. *Journal of Human Evolution* 5, 161–167.

- 615 Harmand, S., Lewis, J.E., Feibel, C.S., Lepre, C.J., Prat, S., Lenoble, A., Boës, X., Quinn, R.L., Brenet, M., Arroyo, A., 2015. 3.3-million-year-old stone tools from Lomekwi 3, West Turkana, Kenya. *Nature* 521, 310–315.
- Hatley, T., Kappelman, J., 1980. Bears, pigs, and Plio-Pleistocene hominids: a case for the exploitation of belowground food resources. *Human Ecology* 8, 371–387.
- 620 Herrmann, S.M., Mohr, K.I., 2011. A continental-scale classification of rainfall seasonality regimes in Africa based on gridded precipitation and land surface temperature products. *Journal of Applied Meteorology and Climatology* 50, 2504–2513.
- Howell, F.C., Bourlière, F. (Eds.), 1963. *African Ecology and Human Evolution*. Aldine Publishing Company, Chicago.
- 625 Huntley, B., 1982. Southern African savannas. In: Huntley, B.J., Walker, B.H. (Eds.), *Ecology of Tropical Savannas*. Springer, Berlin, pp. 101–119.
- Jolly, C.J., 1970. The seed-eaters: a new model of hominid differentiation based on a baboon analogy. *Man* 5, 5–26.
- 630 Knoop, W., Walker, B., 1985. Interactions of woody and herbaceous vegetation in a southern African savanna. *The Journal of Ecology* 73, 235–253.
- Laden, G., Wrangham, R., 2005. The rise of the hominids as an adaptive shift in fallback foods: plant underground storage organs (USOs) and australopith origins. *Journal of Human Evolution* 49, 482–498.
- 635 Lambert, J.E., 1998. Primate digestion: interactions among anatomy, physiology, and feeding ecology. *Evolutionary Anthropology* 7, 8–20.
- Leakey, L.S., 1959. A new fossil skull from Olduvai. *Nature* 184, 491–493.

- Lee-Thorp, J.A., van der Merwe, N.J., Brain, C., 1994. Diet of *Australopithecus robustus* at Swartkrans from stable carbon isotopic analysis. *Journal of Human Evolution* 27, 640 361–372.
- Levin, N.E., Haile-Selassie, Y., Frost, S.R., Saylor, B.Z., 2015. Dietary change among hominins and cercopithecids in Ethiopia during the early Pliocene. *Proceedings of the National Academy of Sciences USA* 112, 12304–12309.
- Lüttge, U., 2004. Ecophysiology of crassulacean acid metabolism (CAM). *Annals of Botany* 3, 629–652. 645
- McGrew, W.C., Baldwin, P.J., Tutin, C.E., 1981. Chimpanzees in a hot, dry and open habitat: Mt. Assirik, Senegal, West Africa. *Journal of Human Evolution* 10, 227–244.
- McNaughton, S., 1983. Serengeti grassland ecology: the role of composite environmental factors and contingency in community organization. *Ecological Monographs* 53, 291–650 320.
- McPherron, S.P., Alemseged, Z., Marean, C.W., Wynn, J.G., Reed, D., Geraads, D., Bobe, R., Bérarat, H.A., 2010. Evidence for stone-tool-assisted consumption of animal tissues before 3.39 million years ago at Dikika, Ethiopia. *Nature* 466, 857–860.
- Mucina, L., Rutherford, M.C., 2006. *The Vegetation of South Africa, Lesotho and Swaziland*. South African National Biodiversity Institute, Pretoria. 655
- Mutanga, O., Prins, H.H., Skidmore, A.K., Wieren, S., Huizing, H., Grant, R., Peel, M., Biggs, H., 2004. Explaining grass-nutrient patterns in a savanna rangeland of southern Africa. *Journal of Biogeography* 31, 819–829.

- Nishida, T., Uehara, S., 1983. Natural diet of chimpanzees (*Pan troglodytes*  
660 *schweinfurthii*): long-term record from the Mahale Mountains, Tanzania. African  
Study Monographs 3, 109–130.
- Norton, G.W., Rhine, R.J., Wynn, G.W., Wynn, R.D., 1987. Baboon diet: a five-year  
study of stability and variability in the plant feeding and habitat of the yellow baboons  
(*Papio cynocephalus*) of Mikumi National Park, Tanzania. Folia Primatologica 48,  
665 78–120.
- Paine, O.C., Koppa, A., Henry, A.G., Leichliter, J.N., Codron, D., Codron, J., Lambert,  
J.E., Sponheimer, M., 2018. Grass leaves as potential hominin dietary resources.  
Journal of Human Evolution 117, 44–52.
- Peters, C.R., 1987. Nut-like oil seeds: Food for monkeys, chimpanzees, humans, and  
670 probably ape-men. American Journal of Physical Anthropology 73, 333–363.
- Peters, C.R., Blumenshine, R.J., 1995. Landscape perspectives on possible land use  
patterns for Early Pleistocene hominids in the Olduvai Basin, Tanzania. Journal of  
Human Evolution 29, 321–362.
- Peters, C.R., Maguire, B., 1981. Wild plant foods of the Makapansgat area: a modern  
675 ecosystems analogue for *Australopithecus africanus* adaptations. Journal of Human  
Evolution 10, 565–583.
- Peters, C.R., Vogel, J.C., 2005. Africa's wild C<sub>4</sub> plant foods and possible early hominid  
diets. Journal of Human Evolution 48, 219–236.
- Peters, C.R., O'Brien, E.M., Box, E.O., 1984. Plant types and seasonality of wild-plant  
680 foods, Tanzania to southwestern Africa: resources for models of the natural  
environment. Journal of Human Evolution 13, 397–414.

- Peters, C.R., O'Brien, E.M., Drummond, R.B., 1992. Edible Wild Plants of Sub-Saharan Africa. Royal Botanic Gardens, Kew.
- Peters, C.R., Vogel, J.C., 2005. Africa's wild C<sub>4</sub> plant foods and possible early hominid  
685 diets. *J. Hum. Evol.* 48, 219–236.
- Post, D.G., 1982. Feeding behavior of yellow baboons (*Papio cynocephalus*) in the Amboseli National Park, Kenya. *International Journal of Primatology* 3, 403–430.
- Prins, H.H., van Langevelde, F., 2008. Resource Ecology: Spatial and Temporal Dynamics of Foraging. Springer, Dordrecht.
- 690 Pruetz, J.D., 2006. Feeding ecology of savanna chimpanzees (*Pan troglodytes verus*) at Fongoli, Senegal. In: Hohmann, G., Robbing, M., Boesch, C. (Eds.), *Feeding Ecology in Apes and Other Primates*. Cambridge University Press, Cambridge, pp. 162–182.
- Rak, Y., 1983. *The Australopithecine Face*. Academic Press, New York.
- Reed, K.E., 1998. Using large mammal communities to examine ecological and  
695 taxonomic structure and predict vegetation in extant and extinct assemblages. *Paleobiology* 24, 384–408.
- Reed, K.E., Spencer, L.M., Rector, A.L., 2013. Faunal approaches in early hominin paleoecology. In: Sponheimer, M., Lee-Thorp, J.A., Reed, K.E., Ungar, P.S. (Eds.), *Early Hominin Paleoecology*. University Press of Colorado, Boulder, pp. 3–34.
- 700 Reynolds, S.C., Bailey, G.N., King, G.C., 2011. Landscapes and their relation to hominin habitats: case studies from *Australopithecus* sites in eastern and southern Africa. *Journal of Human Evolution* 60, 281–298.
- Robbins, C., 1993. *Wildlife Feeding and Nutrition*, 2nd ed. Academic Press, San Diego.

- Rothman, J.M., Dierenfeld, E.S., Molina, D.O., Shaw, A.V., Hintz, H.F., Pell, A.N.,  
705 2006. Nutritional chemistry of foods eaten by gorillas in Bwindi Impenetrable  
National Park, Uganda. *American Journal of Primatology* 68, 675–691.
- Ruess, R., McNaughton, S., 1984. Urea as a promotive coupler of plant-herbivore  
interactions. *Oecologia* 63, 331–337.
- SAS Institute, 2016. JMP®, Version 13.0, 1989–2007. SAS Institute Inc., Cary.
- 710 Scholes, R., Archer, S., 1997. Tree-grass interactions in savannas. *Annual Review of*  
*Ecology and Systematics* 28, 517–544.
- Schulze, R.E., 1997. Climate. In: Cowling, R.M., Richardson, D.M., Pierce, S.M. (Eds.),  
Vegetation of Southern Africa. Cambridge University Press, Cambridge, pp. 2–42.
- Scott, R.S., Ungar, P.S., Bergstrom, T.S., Brown, C.A., Grine, F.E., Teaford, M.F.,  
715 Walker, A., 2005. Dental microwear texture analysis shows within-species diet  
variability in fossil hominins. *Nature* 436, 693–695.
- Searle, K.R., Shipley, L.A., 2008. The comparative feeding behaviour of large browsing  
and grazing herbivores. In: Gordon, I., Prins, H.H. (Eds.), *The Ecology of Browsing*  
*and Grazing*. Springer, Berlin, pp. 117–148.
- 720 Sept, J.M., 1986. Plant foods and early hominids at site FxJj 50, Koobi Fora, Kenya.  
*Journal of Human Evolution* 15, 751–770.
- Sept, J.M., 1994. Beyond bones: archaeological sites, early hominid subsistence, and the  
costs and benefits of exploiting wild plant foods in east African riverine landscapes.  
*Journal of Human Evolution* 27, 295–320.
- 725 Sept, J.M., 2001. Modeling the edible landscape. In: Stanford, C.B., Bunn, H.T. (Eds.),  
*Meat Eating and Human Evolution*, Oxford University Press, Oxford, pp. 73–98.



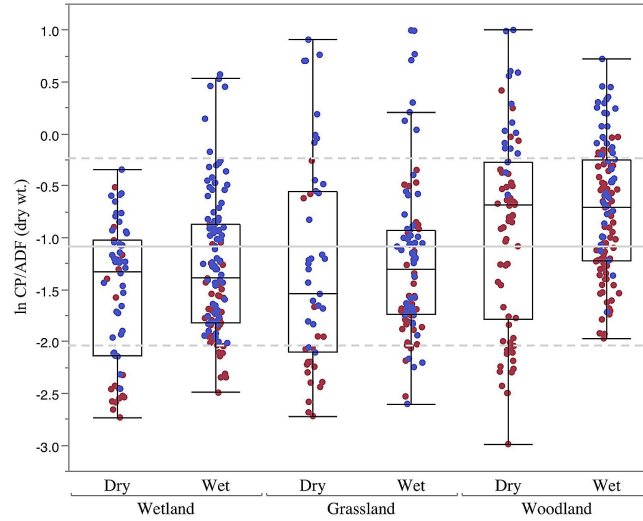
- Sikes, N.E., 1994. Early hominid habitat preferences in East Africa: paleosol carbon isotopic evidence. *Journal of Human Evolution* 27, 25–45.
- Skarpe, C., Hester, A.J., 2008. Plant traits, browsing and gazing herbivores, and  
730 vegetation dynamics. In: Gordon, I., Prins, H.H. (Eds.), *The Ecology of Browsing and Grazing*. Springer, Berlin, pp. 217–261.
- Smith, A.L., Benazzi, S., Ledogar, J.A., Tamvada, K., Pryor Smith, L.C., Weber, G.W.,  
Spencer, M.A., Lucas, P.W., Michael, S., Shekeban, A., 2015. The feeding  
biomechanics and dietary ecology of *Paranthropus boisei*. *The Anatomical Record*  
735 298, 145–167.
- Sponheimer, M., Alemseged, Z., Cerling, T.E., Grine, F.E., Kimbel, W.H., Leakey, M.G.,  
Lee-Thorp, J.A., Manthi, F.K., Reed, K.E., Wood, B.A., 2013. Isotopic evidence of  
early hominin diets. *Proceedings of the National Academy of Sciences USA* 110,  
10513–10518.
- 740 Sponheimer, M., Lee-Thorp, J., de Ruiter, D., Codron, D., Codron, J., Baugh, A.T.,  
Thackeray, F., 2005. Hominins, sedges, and termites: new carbon isotope data from  
the Sterkfontein valley and Kruger National Park. *Journal of Human Evolution* 48,  
301–312.
- Sponheimer, M., Lee-Thorp, J.A., 1999. Isotopic evidence for the diet of an early  
745 hominid, *Australopithecus africanus*. *Science* 283, 368–370.
- Sponheimer, M., Loudon, J., Codron, D., Howells, M., Pruett, J.D., Codron, J., De  
Ruiter, D., Lee-Thorp, J.A., 2006. Do “savanna” chimpanzees consume C<sub>4</sub> resources?  
*Journal of Human Evolution* 51, 128–133.

- Sponheimer, M., Passey, B.H., De Ruiter, D.J., Guatelli-Steinberg, D., Cerling, T.E.,  
750 Lee-Thorp, J.A., 2006. Isotopic evidence for dietary variability in the early hominin  
*Paranthropus robustus*. *Science* 314, 980–982.
- Stohlgren, T.J., Falkner, M., Schell, L., 1995. A modified-Whittaker nested vegetation  
sampling method. *Plant Ecology* 117, 113–121.
- Strait, D.S., Constantino, P., Lucas, P.W., Richmond, B.G., Spencer, M.A., Dechow,  
755 P.C., Ross, C.F., Grosse, I.R., Wright, B.W., Wood, B.A., Weber, G.W., Wang, Q.,  
Byron, C., Slice, D.E., Chalk, J., Smith, A.L., Smith, L.C., Wood, S., Berthaume, M.,  
Benazzi, S., Dzialo, C., Tamvada, K., Ledogar, J.A., 2013. Viewpoints: diet and  
dietary adaptations in early hominins: the hard food perspective. *American Journal of  
Physical Anthropology* 151, 339–355.
- 760 Strait, D.S., Grine, F.E., Moniz, M.A., 1997. A reappraisal of early hominid phylogeny.  
*Journal of Human Evolution* 32, 17–82.
- Strait, D.S., Wright, B.W., Richmond, B.G., Ross, C.F., Dechow, P.C., Spencer, M.A.,  
Wang, Q., 2008. Craniofacial strain patterns during premolar loading: implications for  
human evolution. In: Vinyard, C.J., Ravosa M.J., Wall, C.E. (Eds.), *Primate*  
765 *Craniofacial Function and Biology*. Springer, New York, pp. 173–198.
- Susman, R.L., Stern, J.T. Jr., Jungers, W.L., 1984. Arboreality and bipedality in the  
Hadar hominids. *Folia Primatologica* 43, 113–156.
- Suzuki, A., 1969. An ecological study of chimpanzees in a savanna woodland. *Primates*  
10, 103–148.

- 770 Terrill, T.H., Wolfe, R.M., Muir, J.P., 2010. Factors affecting ANKOM™ fiber analysis  
of forage and browse varying in condensed tannin concentration. *Journal of the  
Science of Food and Agriculture* 90, 2723–2726.
- Tobias, P.V., 1967. *Olduvai Gorge*. Cambridge University Press.
- Towle, I., Irish, J.D., De Groot, I., 2017. Behavioral inferences from the high levels of  
775 dental chipping in *Homo naledi*. *American Journal of Physical Anthropology* 164,  
184–192.
- Ungar, P.S., Sponheimer, M., 2011. The diets of early hominins. *Science* 334, 190–193.
- Ungar, P.S., Grine, F.E., Teaford, M.F., 2008. Dental microwear and diet of the Plio–  
Pleistocene hominin *Paranthropus boisei*. *PLoS One* 3, e2044.
- 780 Ungar, P.S., Sponheimer, M., 2011. The diets of early hominins. *Science* 334, 190–193.
- van der Merwe, N.J., Masao, F.T., Bamford, M.K., 2008. Isotopic evidence for  
contrasting diets of early hominins *Homo habilis* and *Australopithecus boisei* of  
Tanzania. *South African Journal of Science* 104, 153–155.
- van Der Merwe, N.J., Thackeray, J.F., Lee-Thorp, J.A., Luyt, J., 2003. The carbon  
785 isotope ecology and diet of *Australopithecus africanus* at Sterkfontein, South Africa.  
*Journal of Human Evolution* 44, 581–597.
- van Wyk, B.-E., Gericke, N., 2000. *People's Plants: A Guide to Useful Plants of Southern  
Africa*. Briza Publications, Pretoria.
- Vrba, E.S., 1995. The fossil record of African antelopes (Mammalia, Bovidae) in relation  
790 to human evolution and paleoclimate. In: Vrba, E.S., Denton, G.H., Partridge T.C.,  
Burckle, L.H. (Eds.), *Paleoclimate, and Evolution, with Emphasis on Human Origins*.  
Yale University Press, New Haven, pp. 385–424

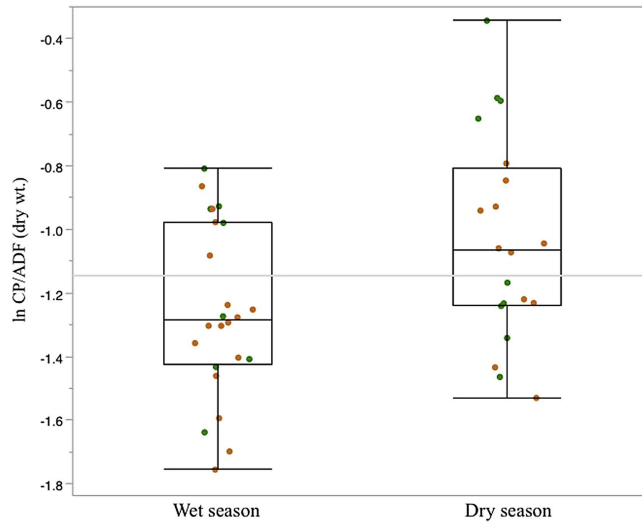
- White, T.D., Ambrose, S.H., Suwa, G., Su, D.F., DeGusta, D., Bernor, R.L., Boisserie, J.-  
R., Brunet, M., Delson, E., Frost, S., 2009. Macrovertebrate paleontology and the  
795 Pliocene habitat of *Ardipithecus ramidus*. *Science* 326, 67–93.
- Williams, L., 1972. *Geology of the Amboseli Area*. Government Printer, Nairobi.
- Wolpoff, M.H., 1973. Posterior tooth size, body size, and diet in South African gracile  
australopithecines. *American Journal of Physical Anthropology* 39, 375–393.
- Wood, B., Constantino, P., 2007. *Paranthropus boisei*: fifty years of evidence and  
800 analysis. *American Journal of Physical Anthropology* 134, 106–132.
- Wynn, J.G., Sponheimer, M., Kimbel, W.H., Alemseged, Z., Reed, K., Bedaso, Z.K.,  
Wilson, J.N., 2013. Diet of *Australopithecus afarensis* from the Pliocene Hadar  
formation, Ethiopia. *Proceedings of the National Academy of Sciences USA* 110,  
10495–10500.
- 805 Yoshikawa, M., Ogawa, H., 2015. Diet of savanna chimpanzees in the Ugalla area,  
Tanzania. *African Study Monographs* 36, 189–209.

## Figure Captions

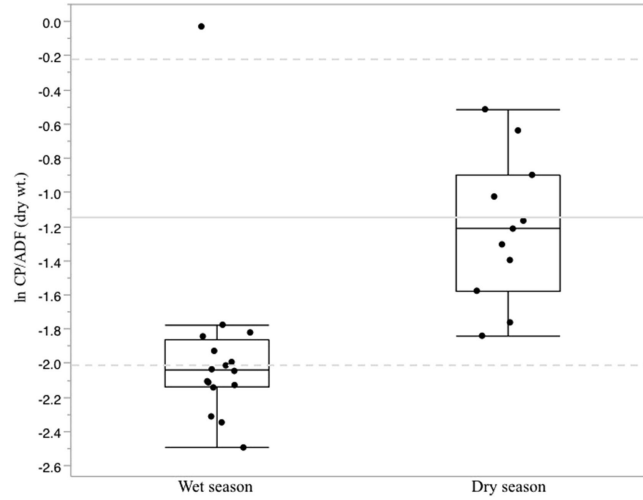


**Figure 1.** Protein/fiber ratios of all plant parts (dry matter) grouped by habitat and season (Kruskal-Wallis:  $p < 0.0001$ ). Solid gray line represents the mean  $\ln$  CP/ADF for 119 foods eaten by gorillas in Bwindi Impenetrable National Park, Uganda ( $-1.15$ ) and dotted lines represent the standard deviation ( $0.89$ ). Gorilla data from Rothman et al. (2006).

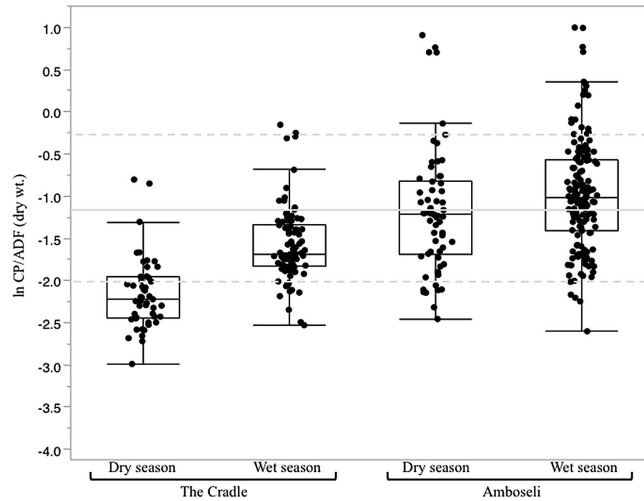
815 Legend: blue dots = Amboseli; red dots = The Cradle. For statistical results of comparisons, refer to Table 3.



**Figure 2.** The protein/fiber ratios (dry matter) of the leaves of sedges (*Cyperus* 820 *immensus*, *Cyperus rotundus*, and *Pycreus mundtii*) and the two dominant grass species (*Cynodon dactylon* and *Sporobolus spicatus*) within Amboseli wetlands. Seasons differ significantly (Kruskal-Wallis:  $p = 0.0118$ ). Legend: green = grass leaves; orange = sedge leaves. Solid gray line represents the mean  $\ln$  CP/ADF for 119 foods eaten by gorillas in Bwindi Impenetrable National Park, Uganda ( $-1.15$  with a standard deviation of  $0.89$ ). 825 Gorilla data from Rothman et al. (2006).



**Figure 3.** Protein/fiber ratios of storage organs (dry matter) in The Cradle. Seasons differ significantly (Kruskal-Wallis:  $p = 0.0002$ ). Solid gray line represents the ln CP/ADF for 830 119 foods eaten by gorillas in Bwindi Impenetrable National Park, Uganda (-1.15) and dotted line represent the standard deviation (0.89). Gorilla data from Rothman et al. (2006).



835 **Figure 4.** Protein/fiber ratios for all C<sub>4</sub> samples (dry matter) by season and field site (Kruskal-Wallis:  $p < 0.0001$ ). Solid gray line represents the mean ln CP/ADF for 119 foods eaten by gorillas in Bwindi Impenetrable National Park, Uganda (-1.15) and dotted line represent the standard deviation (0.89). Gorilla data from Rothman et al. (2006). For pairwise comparisons, refer to Table 4.

840



**Table 1**

Results of three-factor ANOVA exploring plant category, habitat, and seasonal effects on log-transformed protein-fiber ratios.<sup>a</sup>

Effect source	F ratio	<i>p</i> <sup>b</sup>
Plant category	9.0868	<b>0.0001</b>
Habitat	8.9526	<b>0.0002</b>
Season	0.6287	0.4282
Plant category*Habitat	3.3235	0.0556
Plant category*Season	1.6764	0.1881
Habitat*Season	0.6853	0.5044
Plant category*Habitat*Season	1.075	0.3682

<sup>a</sup>  $p < 0.0001$ ;  $R^2 = 0.188$ .

<sup>b</sup> Significant results are depicted in bold type.

**Table 2**

Results of three-factor ANOVA exploring field site, habitat, and seasonal effects on log-transformed protein-fiber ratios.<sup>a</sup>

Effect Source	F ratio	<i>p</i> <sup>b</sup>
Field Site	178.6225	<b>&lt;0.0001</b>
Habitat	81.9881	<b>&lt;0.0001</b>
Season	1.9727	0.1608
Field Site*Habitat	2.0070	0.1354
Field Site*Season	10.8202	<b>0.0011</b>
Habitat*Season	3.0897	<b>0.0464</b>
Field Site*Habitat*Season	4.8072	<b>0.0085</b>

<sup>a</sup>  $p < 0.0001$ ; adjusted  $R^2 = 0.344$ .

<sup>b</sup> Significant results are depicted in bold type.

**Table 3**

Statistical comparisons of habitats across seasons (Steel-Dwass method).<sup>a</sup>

	Wet WL	Dry WL	Wet GL	Dry GL	Wet WO
Dry WL	0.5276	–			
Wet GL	0.9996	0.5290	–		
Dry GL	0.9572	0.9775	0.8792	–	
Wet Wood	<b>&lt;0.0001</b>	<b>&lt;0.0001</b>	<b>&lt;0.0001</b>	<b>0.0010</b>	–
Dry Wood	<b>0.0173</b>	<b>0.0002</b>	0.0520	0.2838	0.8889

Abbreviations: GL = grassland; WL = wetland; WO = woodland.

<sup>a</sup> Significant results are depicted in bold type. ‘Wet’ and ‘Dry’ refer to seasons.

**Table 4**Statistical comparisons of C<sub>4</sub> plants across seasons (Steel-Dwass method).<sup>a</sup>

	Dry Cradle	Wet Cradle	Dry Amboseli
Wet Cradle	<b>&lt;0.0001</b>	–	
Dry Amboseli	<b>&lt;0.0001</b>	<b>0.0007</b>	–
Wet Amboseli	<b>&lt;0.0001</b>	<b>&lt;0.0001</b>	0.0747

<sup>a</sup> Significant results are depicted in bold type. 'Wet' and 'Dry' refer to seasons.