



Universiteit
Leiden
The Netherlands

Extremely shy & genetically close : investigating neurobiological endophenotypes of social anxiety disorder

Bas, J.M.

Citation

Bas, J. M. (2020, January 14). *Extremely shy & genetically close : investigating neurobiological endophenotypes of social anxiety disorder*. Retrieved from <https://hdl.handle.net/1887/82705>

Version: Publisher's Version

License: [Licence agreement concerning inclusion of doctoral thesis in the Institutional Repository of the University of Leiden](#)

Downloaded from: <https://hdl.handle.net/1887/82705>

Note: To cite this publication please use the final published version (if applicable).

Cover Page



Universiteit Leiden



The handle <http://hdl.handle.net/1887/82705> holds various files of this Leiden University dissertation.

Author: Bas, J.M.

Title: Extremely shy & genetically close : investigating neurobiological endophenotypes of social anxiety disorder

Issue Date: 2020-01-14





Chapter 3

The Leiden Family Lab study on Social Anxiety Disorder: a multiplex, multigenerational family study on neurocognitive endophenotypes

Published as:

Bas-Hoogendam, J. M., Harrewijn, A., Tissier, R. L. M., van der Molen, M. J. W., van Steenbergen, H., van Vliet, I. M., Reichart, C. G., Houwing-Duistermaat, J. J., Slagboom, P. E., van der Wee, N. J. A., Westenberg, P. M. (2018). The Leiden Family Lab study on Social Anxiety Disorder: a multiplex, multigenerational family study on neurocognitive endophenotypes. *International Journal of Methods in Psychiatric Research*, 27, e1616.

ABSTRACT

Objectives

Social anxiety disorder (SAD) is a serious and prevalent psychiatric condition, with a heritable component. However, little is known about the characteristics that are associated with the genetic component of SAD, the so-called ‘endophenotypes’. These endophenotypes could advance our insight in the genetic susceptibility to SAD, as they are on the pathway from genotype to phenotype. The Leiden Family Lab study on Social Anxiety Disorder (LFLSAD) is the first multiplex, multigenerational study aimed to identify neurocognitive endophenotypes of social anxiety.

Methods

The LFLSAD is characterized by a multidisciplinary approach and encompasses a variety of measurements, including a clinical interview, functional and structural magnetic resonance imaging (MRI) and an electroencephalography (EEG) experiment. Participants are family members from two generations, from families genetically enriched for SAD.

Results

The sample ($n = 132$ participants, from nine families) was characterized by a high prevalence of SAD, in both generations (prevalence (sub)clinical SAD: 38.3 %). Furthermore, (sub)clinical SAD was positively related to self-reported social anxiety, fear of negative evaluation, trait anxiety, behavioral inhibition, negative affect and the level of depressive symptoms.

Conclusions

By the multidimensional character of the measurements and thorough characterization of the sample, the LFLSAD offers unique opportunities to investigate candidate neurocognitive endophenotypes of SAD.

INTRODUCTION

Social anxiety disorder (SAD) is a prevalent mental disorder, with an estimated lifetime prevalence around 13 % (Kessler et al., 2012). Patients with SAD have an extreme fear of being negatively evaluated by others in social situations (American Psychiatric Association, 2013). SAD has a considerable impact on the life of patients, as the disorder has a typical onset during late childhood or early adolescence, and is characterized by a chronic course (Beard, Moitra, Weisberg, & Keller, 2010; Beesdo-Baum et al., 2012; Haller, Cohen Kadosh, Scerif, & Lau, 2015; Miers, Blöte, de Rooij, Bokhorst, & Westenberg, 2013; Miers, Blöte, Heyne, & Westenberg, 2014; Steinert, Hofmann, Leichsenring, & Kruse, 2013; Westenberg, Gullone, Bokhorst, Heyne, & King, 2007; Wittchen & Fehm, 2003). SAD patients experience impairments in multiple domains, including education, work, and social life; they report a lower quality of life, and suffer often from comorbid psychopathology, like other anxiety disorders, depression and substance abuse (Acarturk, de Graaf, van Straten, Have, & Cuijpers, 2008; Dingemans, van Vliet, Couvée, & Westenberg, 2001; Fehm, Pelissolo, Furmark, & Wittchen, 2005; Mack et al., 2015; Meier et al., 2015; Stein & Stein, 2008). Insight in the factors that play a role in the development of SAD is therefore of uttermost importance, in order to be able to reduce long-term effects of SAD by developing effective preventive interventions and early treatment programs (Beauchaine et al., 2008).

Several studies have indicated that genetic predispositions, as well as environmental, biological, and temperamental factors interact in the pathogenesis of SAD, as reviewed by Wong & Rapee (2016), Spence & Rapee (2016) and Fox & Kalin (2014). Family- and twin studies pointed to a heritability of SAD of around 50 % (Bandelow et al., 2016; Gottschalk & Domschke, 2016; Isomura et al., 2015; Smoller, 2015); however, the search for specific genes underlying the susceptibility to SAD has been proven difficult. To start, SAD is a heterogeneous disorder and the diagnosis is based on clinical assessments and not on biologically-based measurements (Bearden et al., 2004; Glahn et al., 2007; Gottesman & Gould, 2003). In addition, it is assumed that multiple interacting genetic variants, with relatively small individual effects, contribute to the vulnerability to SAD, complicating their detection (Binder, 2012; Munafò & Flint, 2014b). Furthermore, epigenetic mechanisms, reflecting the interaction between genetic background and environmental influences, are of importance, requiring multi-level studies integrating data on psychopathology, (epi)genetics and environment (Gottschalk & Domschke, 2016; Schiele & Domschke, 2017). Given these complexities, studies into the genes that contribute to the pathophysiology may be facilitated by defining endophenotypes related to SAD (Bas-Hoogendam et al., 2016).

Endophenotypes are measurable characteristics on the pathway from genotype to phenotype (Gottesman & Gould, 2003; Lenzenweger, 2013b) and offer several possibilities to advance our understanding of the genetic susceptibility to SAD (Bas-Hoogendam et al., 2016). Endophenotypes could shed light on the pathways leading to disorder phenotypes (Flint et

al., 2014; Miller & Rockstroh, 2013), can be used to identify individuals at risk (Puls & Gallinat, 2008), and could aid in the development of animal models for psychopathology (Gould & Gottesman, 2006). Furthermore, they offer starting points for therapeutic interventions (Garner et al., 2009) and can be useful in trans-diagnostic research as proposed by the NIMH Research Domain Criteria (RDoC) (Sanislow et al., 2010). For a conceptual framework on neurobiological endophenotypes of SAD, we refer to Bas-Hoogendam et al. (2016).

Endophenotypes are defined as meeting the following criteria (Glahn et al., 2007; Gottesman & Gould, 2003; Lenzenweger, 2013b; Puls & Gallinat, 2008): 1st they are *associated with the disorder*; 2nd they are *state-independent traits, already present in a preclinical state*; 3rd they are *heritable*; 4th they *co-segregate with the disorder within families of probands, with non-affected family members showing altered levels of the endophenotype in comparison to the general population*. Furthermore, endophenotypes are ideally more strongly related to the disorder of interest in comparison to other psychiatric conditions (Lenzenweger, 2013a), but given the shared genetic influences between psychiatric disorders, certain endophenotypes are likely related to more than one disorder (Cannon and Keller, 2006).

Objective of the Leiden Family Lab study on Social Anxiety Disorder

To determine which disease-related characteristics may serve as endophenotypes, participants with SAD as well as their relatives need to be extensively phenotyped. Families are essential to allow investigating the *heritability* of the feature (criterion 3) and the *co-segregation of the candidate endophenotype with the disorder within the family* (criterion 4, first element), while case-control studies and longitudinal studies are needed to examine the other endophenotype criteria (criterion 1 and criterion 2, respectively) (Bas-Hoogendam et al., 2016). In addition, adequately matched control families are needed to investigate the second element of criterion 4, namely whether *non-affected family members show altered levels of the endophenotype when compared to the general population*. To the best of our knowledge, the Leiden Family Lab study on Social Anxiety Disorder (LFLSAD) is the first multiplex (i.e., multiple cases of the disorder within one family), multigenerational family study aimed to determine neurocognitive endophenotypes of SAD, as measured with magnetic resonance imaging (MRI) and electroencephalography (EEG), investigating the *heritability* of candidate endophenotypes and the *co-segregation of the candidate endophenotypes with the disorder within the family*. Two important aspects of the study deserve to be highlighted.

First, the multiplex, multigenerational design was chosen to maximize statistical power to detect genetic and environmental influences on SAD-related characteristics. Having multiple cases within a family instead of sporadic cases enriches the sample for a heritable basis of the disease and the detection of genetic factors. Furthermore, a sample consisting of large families, composed of several related nuclear families (parents with their children), is likely to share more heritable factors than a same-sized sample of unrelated nuclear families,

hence more statistical power to distinguish shared environmental effects from genetic effects (Williams & Blangero, 1999), cf. Gur et al. (2007).

Second, the LFLSAD focuses on neurocognitive SAD endophenotypes as measured with MRI and EEG, as these are both non-invasive, widely applied, and safe methods to investigate structural and functional properties of the human brain. Importantly, these methods are complementary: EEG has good temporal precision to capture electrocortical activity associated with attentional SAD-related biases and can be used to study candidate endophenotypes related to processing social judgments (Harrewijn, van der Molen, van Vliet, Tissier, & Westenberg, 2018; Van der Molen et al., 2014) and to performing a public speaking task (Harrewijn, van der Molen, van Vliet, Houwing-Duistermaat, & Westenberg, 2017; Harrewijn, Van der Molen, & Westenberg, 2016). MRI enables precise spatial localization of the brain regions implicated in SAD, and provides valuable insights in the structure and connectivity of the brain, and the functioning of brain regions like the amygdala and the prefrontal cortex during viewing neutral faces in a habituation and conditioning task (cf. (Bas-Hoogendam, van Steenbergen, Westenberg, & van der Wee, 2015; Blackford et al., 2013, 2011; Davis, Johnstone, Mazzulla, Oler, & Whalen, 2010)) and processing social norm violations (Bas-Hoogendam, van Steenbergen, Kreuk, van der Wee, & Westenberg, 2017a; Bas-Hoogendam, van Steenbergen, van der Wee, & Westenberg, 2018; Blair et al., 2010). Typically, neurocognitive endophenotypes are assumed to be closer to the genotype than, for example psychological constructs (Cannon & Keller, 2006). However, data collection in the LFLSAD was not limited to these measures: in order to achieve comprehensive phenotyping of the participants, a variety of additional measurements was included, as described in detail below. To this aim, the LFLSAD was performed by a multidisciplinary team of clinicians, neuroscientists, and statisticians.

In the current paper, the design and methods of the LFLSAD are presented. Furthermore, characteristics of the LFLSAD sample are described, including analyses on its psychological features. Hypotheses with respect to the candidate neurocognitive endophenotypes have been pre-registered in 2014 on the Open Science Framework website (osf.io) and are available online (links provided in the *Supplemental Methods*) (Bas-Hoogendam et al., 2014a). Results of the analyses into candidate neurocognitive endophenotypes of SAD are reported in other papers and conference abstracts (Bas-Hoogendam, van Steenbergen, van der Wee, & Westenberg, 2017c, 2017b; Bas-Hoogendam, van Steenbergen, et al., 2015; Harrewijn, van der Molen, et al., 2017; Harrewijn et al., 2018) and in preparation.

METHODS

Study design and setting

The Leiden Family Lab study on Social Anxiety Disorder (LFLSAD) is a cross-sectional, two-generation multiplex family study on the neurocognitive characteristics that are genetically linked to SAD. The study is a collaboration between Leiden University (Institute of Psychology) and the Leiden University Medical Center (LUMC; Departments of (Child) Psychiatry and Department of Medical Statistics and Bioinformatics) and is embedded within the Leiden University research profile area 'Health, prevention and the human life cycle'. Data collection took place at Leiden University and the LUMC between October 2013 and July 2015.

Sample

Families were considered eligible for inclusion when they contained at least one adult, aged 25 - 55 years, with a primary diagnosis of SAD (from now on referred to as the 'proband'), of whom at least one child, aged 8 - 21 years and living at home with the proband, showed SAD symptoms at a clinical or subclinical level (referred to as the 'proband's SA-child'). For these participants, comorbidity with other internalizing disorders was allowed; however, families were excluded when the proband or the proband's SA-child suffered of other psychiatric diagnoses, especially developmental disorders (e.g. autism).

In addition to the proband and its SA-child, the proband's spouse, other children (age ≥ 8 years) as well as the proband's sibling(s) and their spouse(s) with their child(ren) (age ≥ 8 years) were invited to participate. In *Figure 3.1* we depict a pedigree starting with the grand-parental generation (0) on which no data was collected for reasons of feasibility; probands and siblings belonging to generation 1; and proband's and siblings' offspring (generation 2). We aimed to include families with at least 8 family members, to enable reliable estimations of the relation between endophenotype and SAD.

Family members of the proband and proband's SA-child were included independent of the presence of psychopathology. All participants were required to have sufficient comprehension of the Dutch language.

Sample size & power calculation

The aim of the LFLSAD was twofold. First, the study aimed to estimate the association between SAD and neurocognitive putative endophenotypes (Bas-Hoogendam et al., 2014a, 2016; Harrewijn, Schmidt, Westenberg, Tang, & van der Molen, 2017; Harrewijn, van der Molen, et al., 2017; Harrewijn et al., 2018); second, the significance of clustering of these endophenotypes within families (i.e., genetic effects) was addressed. To estimate this heritability, a joint mixed model taking the ascertainment process and familiar relationships into account, will be used (Tissier, Tsonaka, Mooijaart, Slagboom, & Houwing-Duistermaat, 2017). Power calculations, performed by co-author JHD, revealed that 12 families with 8 - 12 family members (average:

10 members per family) were required for sufficient power (i.e., minimally 80 %) to investigate these two questions (details provided in *Supplemental Methods*).

Procedure

Recruitment

Families were recruited through media exposure, such as interviews in Dutch newspapers, on television and radio; furthermore, the study was brought to the attention of patient organizations like the 'Anxiety, Compulsion and Phobia association' (in Dutch: 'Angst, Dwang en Fobie stichting') and the 'Association of Shy People' ('Vereniging van Verlegen Mensen'), to clinical psychologists, general practitioners, and mental health care organizations. In the media items, we asked families in which multiple family members experienced 'extreme shyness' to contact us.

Screening-procedure and inclusion of families

Potential probands were screened for eligibility by a telephone call or an email, depending on their preference. This screening contained questions with respect to the presence of social anxiety in the proband and the proband's SA-child, the age of the proband and his/her child(ren), and the potential number of family members that could be invited for the study. In addition, probands were further informed about the study. When they passed the screening and showed interest in participation, an information letter was sent to the proband and his/her nuclear family members, containing detailed information about the study. Two weeks later, participants were contacted by telephone and any questions about the study were answered. Next, the proband, the proband's spouse and the proband's SA-child were invited to come to the LUMC for an introductory meeting and structured clinical interview, in order to confirm the presence of a primary diagnosis of SAD (proband) and (sub)clinical social anxiety (proband's SA-child). Furthermore, a screening was performed to exclude the presence of autism in the proband and the proband's SA-child.

When the inclusion criteria were met, the proband and his/her nuclear family were included in the study and invited for the remaining measurements (*Table 3.1*). In addition, we asked the proband to contact his/her sibling(s), in order to confirm that they were interested to be informed about participation in the study. Given a positive response, these siblings, together with their partner and/or children, were invited to participate by the investigators. Given the inherent characteristic of socially anxious people to avoid new situations and their tendency to stay out of the spotlights, we encouraged participants to visit the lab together with their family members, in order to make them feel more comfortable. Although we emphasized the importance of including as many family members as possible within the study, we also indicated that each individual was free to decide whether or not to participate (*Figure 3.1*).

Table 3.1 Measurements included in the LFLSAD.

	Measurements	Instrument	Age group (years)
Clinical interview	Diagnoses of mental (axis-1) disorders according to DSM criteria	M.I.N.I.-Plus	18+
		M.I.N.I.-Kid	8-17
Questionnaires	Social anxiety symptoms	LSAS-SR	18+
		SAS-A	8-17
	Fear of negative evaluation	BFNE-II-R	8+
	General anxiety	STAI-trait	8+
		STAI-state (before and after MRI scan)	8+
	Depressive symptoms	BDI-II	18+
		CDI	8-17
	Affect	PANAS	8+
	Temperament	BIS/BAS	13+
		BIS/BAS-C	8-12
	Autism screening	AQ	18+
		SRS, completed by both parents about their child(ren)	8-17
	Handedness	EHI	8+
Estimation of intelligence	IQ	WAIS-IV subtests (similarities & block design)	17+
		WISC subtests (similarities & block design)	8-16
MRI scan	Structural and functional MRI		8+
EEG experiment	EEG measurement, including collection of saliva for cortisol measurements		8+
			8+
Genotyping	Collection of saliva	Oragene•DNA OG-500 kit	8+

Abbreviations

M.I.N.I.-Plus: Mini-Plus International Neuropsychiatric Interview (MINI Plus version 5.0.0) (Sheehan et al., 1998; van Vliet & de Beurs, 2007); M.I.N.I.-Kid: MINI Kid interview version 6.0 (Bauhuis, Jonker, Verdellen, Reynders, & Verbraak, 2013; Sheehan et al., 2010); LSAS-SR: Liebowitz Social Anxiety Scale – self report (Fresco et al., 2001; Mennin et al., 2002); SAS-A : Social Anxiety Scale – adolescents (La Greca & Lopez, 1998); BFNE-II-R: revised Brief Fear of Negative Evaluation-II scale (Carleton, McCreary, Norton, & Asmundson, 2006; Leary, 1983); STAI: State-Trait Anxiety Inventory (Spielberger et al., 1970); BDI-II= Beck Depression Inventory-II (Beck, Steer, & Brown, 1996; Van der Does, 2002); CDI: Children's Depression Inventory (Kovacs, 1983, 1985; Timbremont & Braet, 2002); PANAS: Positive and Negative Affect Schedule (Peeters, Ponds, & Vermeer, 1996; Watson, Clark, & Tellegen, 1988); BIS/BAS: Behavioral Inhibition and Behavioral Activation Scales (Carver & White, 1994); BIS/BAS-C: Behavioral Inhibition and Behavioral Activation Scales for children (Muris, Meesters, de Kanter, & Timmerman, 2005); AQ: Autism-spectrum Quotient questionnaire (Baron-Cohen, Wheelwright, Skinner, Martin, & Clubley, 2001); SRS: Social Responsiveness Scale (Constantino et al., 2003; Roeyers, Thys, Druart, De Schryver, & Schittekatte, 2011); EHI: Edinburgh Handedness Inventory (Oldfield, 1971); WAIS: Wechsler Adult Intelligence Scale IV (Wechsler, Coalson, & Raiford, 2008); WISC: Wechsler Intelligence Scale for Children III (Wechsler, 1991); MRI: magnetic resonance imaging; EEG: electroencephalography.

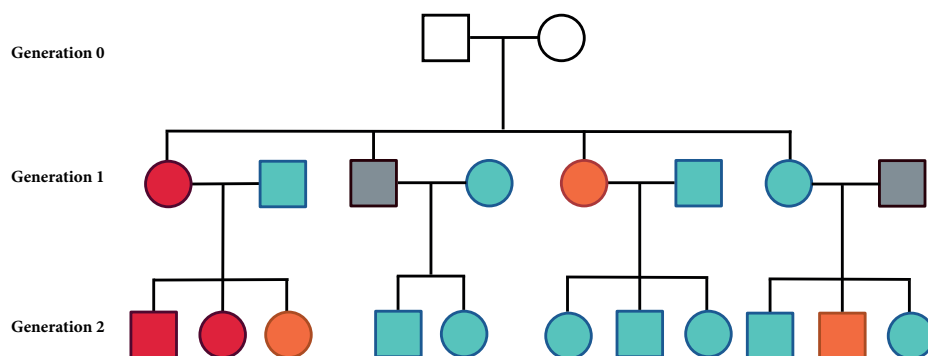


Figure 3.1 Example of a family within the Leiden Family Lab study on Social Anxiety Disorder.

Families were included based on the combination of a parent with SAD ('proband'; depicted in red) and a proband's child with SAD (red) or subclinical SA (orange). In addition, family members of two generations were invited, independent from the presence of SAD within these family members (no SAD: light blue; did not participate: gray). Grandparents (generation 0; white) were not invited for participation. This family is slightly modified to guarantee anonymity; however, the number of family members and the frequency of (sub)clinical SAD are depicted truthfully. Squares and circles represent men and women, respectively.

Ethics

The study (P12.061) was approved by the Medical Ethical Committee of the LUMC in June 2012. All participants received written and verbal information with respect to the objectives and procedure of the study; information letters were age-adjusted, to make them understandable for children and adolescents as well. Participants provided informed consent prior to participation, according to the Declaration of Helsinki. Both parents signed the informed consent form for their children, while children between 12 and 18 years of age signed the form themselves as well. Every participant received €75 for participation (duration whole test procedure, including breaks: 8 hours) and travel expenses were reimbursed. Furthermore, participants were provided with lunch / diner, snacks, and drinks during their visit to the lab. Confidentiality of the research data was maintained by the use of a unique research ID number for each participant.

Measurements

All participants took part in the same measurements; the order of the measurements differed between participants depending on their availability and lab resources. However, as described above, for the proband, the proband's spouse, and the proband's SA-child, the clinical interview always preceded the other measurements. Age-appropriate instruments were used to evaluate certain constructs. Measurements are listed in *Table 3.1* and explained below.

Diagnosis of mental disorders

Structured clinical interviews using the Mini-International Neuropsychiatric Interview (M.I.N.I.)-Plus (version 5.0.0) (Sheehan et al., 1998; van Vliet & de Beurs, 2007) or the M.I.N.I.-Kid (version 6.0) (Bauhuis, Jonker, Verdellen, Reyniers, & Verbraak, 2013; Sheehan et al., 2010) were used to determine the presence of psychiatric diagnoses according to DSM-IV-TR criteria (axis-I). Interviews were conducted by trained clinicians, and were recorded. These recordings were used to determine the presence of (sub)clinical SAD. Clinical SAD was diagnosed using the DSM-IV-TR criteria for the generalized subtype of SAD, but the clinician verified whether the DSM-5 criteria for SAD were also met in order to establish the diagnosis. Participants were classified as having subclinical SAD when they met the criteria for SAD as described in the DSM-5, but without showing obvious impairments in social, occupational, or other important areas of functioning (criterion G) (American Psychiatric Association, 2013).

Self-report assessments of anxiety and associated constructs

Social anxiety was assessed on a dimensional scale using the self-report version of the Liebowitz Social Anxiety Scale (LSAS-SR) (Fresco et al., 2001; Mennin et al., 2002) or the Social Anxiety Scale for Adolescents (SAS-A) (La Greca & Lopez, 1998). The LSAS-SR measures fear in and avoidance of situations that are likely to elicit social anxiety, with good internal consistency (Heimberg et al., 1999). The SAS-A determines social anxiety in children and adolescents, with satisfactory levels of internal consistency (Miers et al., 2013).

Fear of negative evaluation was assessed with the revised Brief Fear of Negative Evaluation (BFNE)-II-R scale (Carleton, McCreary, Norton, & Asmundson, 2006), which is a revision of the BFNE questionnaire (Leary, 1983). The BFNE-II-R is a self-report questionnaire with excellent internal consistency and good convergent validity (Carleton, Collimore, & Asmundson, 2007).

The State-Trait Anxiety Inventory (STAI) ((Spielberger, Gorsuch, & Lushene (1970); see Spielberger & Vagg (1984) for psychometric properties) was used to determine self-reported trait anxiety, as well as state anxiety before and after the MRI scan.

Severity of self-reported depressive symptoms was assessed using the Beck Depression Inventory-II (BDI-II) (Beck, Steer, & Brown, 1996; Van der Does, 2002) or the Children's Depression Inventory (CDI) (Kovacs, 1983, 1985; Timbremont & Braet, 2002). Due to ethical reasons, an item asking about suicide was removed from the CDI (cf. Miers, Blöte, & Westenberg (2010)).

The general mood of the participant, experienced in the last couple of weeks, was assessed by the self-report Positive and Negative Affect Schedule (PANAS) (Peeters, Ponds, & Vermeer, 1996; Watson, Clark, & Tellegen, 1988), which is a reliable and valid instrument to measure affect (Crawford & Henry, 2004).

The sensitivity for the temperamental traits ‘behavioral inhibition’ and ‘behavioral activation’ was assessed using the self-report BIS/BAS (Carver & White, 1994; Franken, Muris, & Rassin, 2005) or the BIS/BAS scales for children (BIS/BAS-C) (Muris, Meesters, de Kanter, & Timmerman, 2005).

Autism screening

Adult participants were screened for autism using the self-report Autism-spectrum Quotient (AQ) questionnaire (Baron-Cohen, Wheelwright, Skinner, Martin, & Clubley, 2001); parents completed the Dutch version of Social Responsiveness Scale about their child(ren) (Constantino et al., 2003; Roeyers, Thys, Druart, De Schryver, & Schittekatte, 2011).

Handedness

Handedness was assessed with the Edinburgh Handedness Inventory (EHI) (Oldfield, 1971).

Estimation of intelligence

Two subscales of the Wechsler Adult Intelligence Scale-IV (WAIS-IV) (Wechsler, Coalson, & Raiford, 2008) or Wechsler Intelligence Scale for Children-III (WISC) (Wechsler, 1991), the similarities (verbal comprehension) and block design (perceptual reasoning) subtests, were administered to obtain an estimate of cognitive functioning.

Structural and functional MRI measurements

A detailed description of the MRI session is included in the *Supplemental Methods*. The session consisted of a high-resolution T1 scan, two diffusion tensor imaging scans and a magnetization transfer ratio scan. In addition, a high-resolution EPI scan and a B0 field map were acquired. Functional MRI data were collected during resting-state and during two functional paradigms: an amygdala paradigm investigating amygdala habituation (based on the work of Blackford, Allen, Cowan, & Avery, 2013; Blackford, Avery, Cowan, Shelton, & Zald, 2011; Schwartz, Wright, Shin, Kagan, Whalen, et al., 2003; Schwartz, Wright, Shin, Kagan, & Rauch, 2003) and conditioning (Davis et al., 2010), and the revised Social Norm Processing Task (Bas-Hoogendam, van Steenbergen, Kreuk, et al., 2017a).

EEG measurements

A detailed description of the EEG session is included in the *Supplemental Methods*. The session consisted of multiple resting-state measurements, as well as two task paradigms: a social judgment paradigm (Harrewijn et al., 2018; Van der Molen et al., 2014) and a social performance task (Harrewijn, van der Molen, et al., 2017; Harrewijn et al., 2016). At several time points before and during this task, task-induced mood was measured and saliva samples were collected to measure cortisol.

Biosampling for DNA isolation

Saliva samples were collected for future genotyping, using the Oragene•DNA OG-500 self-collection kits (Genotek, Ottawa, Ontario, Canada).

Data analysis for the current paper***Sample characterization***

We investigated socio-demographic differences between the generations using chi-square tests (male / female ratio, native country, and education level) and linear regression models (age and estimated IQ). These regression models were fitted in R (R Core Team, 2016), with generation as independent variable. Because of the relationships between the participants, genetic correlations between family members were modeled by including random effects (lme4 function).

Next, in order to verify that the LFLSAD sample is genetically enriched for SAD, several analyses were performed. First, the presence of clinical and subclinical SAD was determined. Furthermore, the heritability of (sub)clinical SAD within the sample was estimated using the software package SOLAR (Sequential Oligogenic Linkage Analysis Routines; Almasy & Blangero, 1998). Heritability indicates how strong genetic effects influence a certain trait, and is defined as the proportion of the variation in a phenotype that can be attributed to additive genetic effects (Almasy & Blangero, 2010; Wray & Visscher, 2008). SOLAR uses maximum likelihood techniques to attribute variance in the phenotype to either genetic or environmental effects, based on a kinship matrix for the genetic component and an identity matrix for the unique environmental component. Here, we did not include a shared environmental component, to keep the model as simple as possible. We corrected for ascertainment (de Andrade & Amos, 2000) by indicating that families were selected based on the proband and the proband's SA-child. Age and gender were included as covariates, and were removed from the model when their effect was not significant ($p > 0.05$).

Characterization of participants with and without (sub)clinical SAD

To further characterize the sample, we investigated differences between participants with and without (sub)clinical SAD with respect to male / female ratio, generation, presence of (comorbid) psychopathology (chi-square tests; Bonferroni-corrected p -value for psychopathology: $p = 0.003$ (15 tests)), age and estimated IQ (regression models with genetic correlations as random effects). Furthermore, we examined the relationships between (sub)clinical SAD and self-reported levels of anxiety and anxiety-related constructs. When different questionnaires were used for adults and children/adolescents, z -scores were used (see *Supplemental Methods* for reference values). The following constructs were investigated: level of social anxiety (z -score), level of fear of negative evaluation, level of depressive symptoms (z -score), level of negative affect, level of trait anxiety and the level of inhibited temperament (z -score). Regression models were fitted in R, with (sub)clinical SAD as the

independent variable; the outcomes of the questionnaires were the dependent variables of interest. Age and gender were included as covariates, and the genetic correlations between family members were modeled by including random effects. A Bonferroni-corrected p -value of 0.008 was used (six tests).

RESULTS

Recruitment and inclusion

Given the nature of SAD, recruitment of families meeting the inclusion criteria was a time-consuming process, taking place between Summer 2013 and Summer 2015. Nine families were included in the LFLSAD, including 133 family members (*Figure 3.2*). All probands were recruited by media exposure and contacts with patient associations, and none of the probands had been treated for SAD before entering the study. Due to insufficient proficiency of the Dutch language, data of one participant (partner of a proband's sibling) were excluded. Socio-demographic characteristics of the remaining sample ($n = 132$) are summarized in *Table 3.2*.

Table 3.2 Socio-demographic characteristics of the LFLSAD sample, per generation.

	Generation 1 ($n = 62$)	Generation 2 ($n = 70$)	Statistical analysis
Gender (n)			$\chi^2(1) = 1.05, p = 0.38$
Male / Female	29 / 33	39 / 31	
Age (in years, mean \pm SD)	46.2 \pm 6.6	17.9 \pm 6.2	$\beta = -30.4, p < 0.001$
Range	31.0 - 61.5	8.2 - 32.2	
Native country (n)			$\chi^2(1) = 0.40, p = 0.84$
The Netherlands	57	65	
Other	5	5	
Education level (n) [†]			$\chi^2(1) = 3.28, p = 0.19$
Low	11	22	
Intermediate	25	26	
High	25	22	
Estimated IQ (mean \pm SD) [‡]	104.0 \pm 11.8	107.2 \pm 10.6	$\beta = 2.5, p = 0.13$

Footnotes

[†]: Generation 1 (education completed): data from 61 participants; generation 2 (education completed or currently following): data from 70 participants.

[‡]: Generation 1: data from 58 participants; generation 2: data from 66 participants.

Education level was classified as follows: low: primary education (elementary school) and pre-vocational education; intermediate: higher secondary education (higher general continued education, pre-university secondary education) and post-secondary education (intermediate vocational education); high: tertiary education (higher professional education, university).

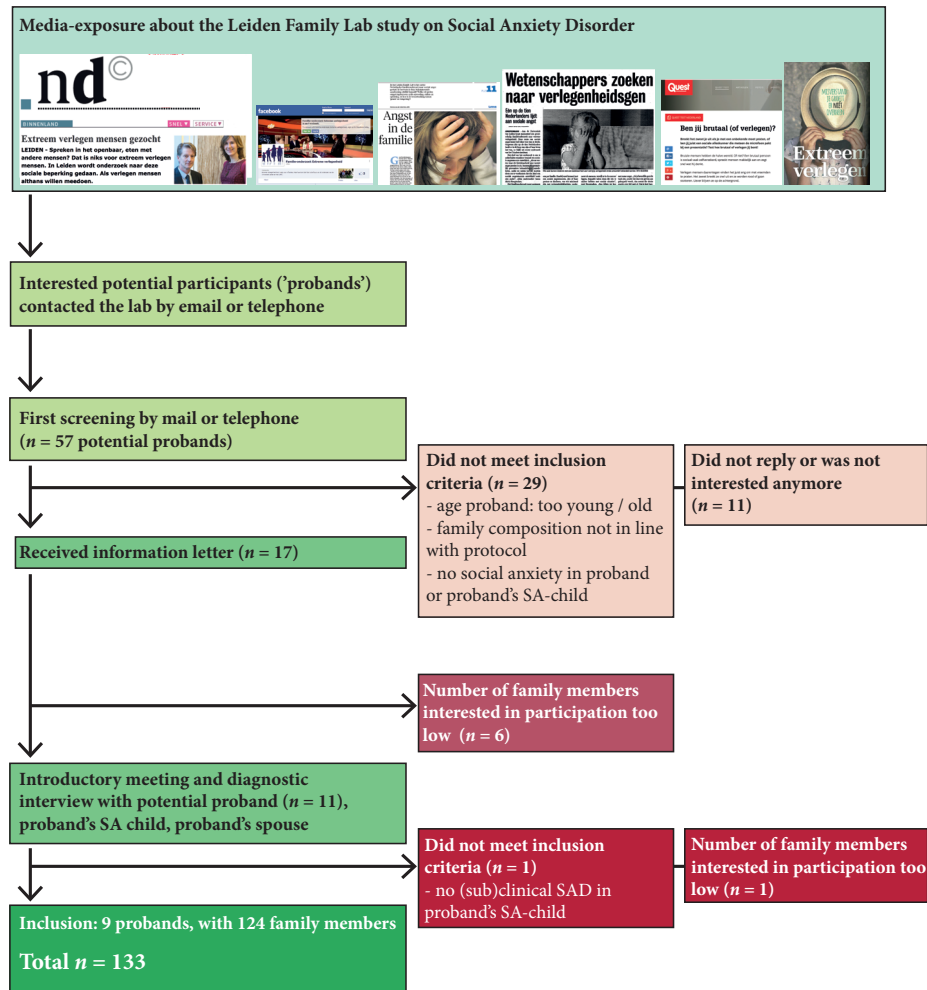


Figure 3.2 Flowchart of the Leiden Family Lab study on Social Anxiety Disorder.

On average, each family contained 14.7 participating family members (range: 4 - 35). The sample included 68 males and 64 females, who were equally divided over the generations. As expected based on the design, the generations differed significantly in age, but not in estimated IQ (Table 3.2). Availability of data is illustrated in Figure 3.3.

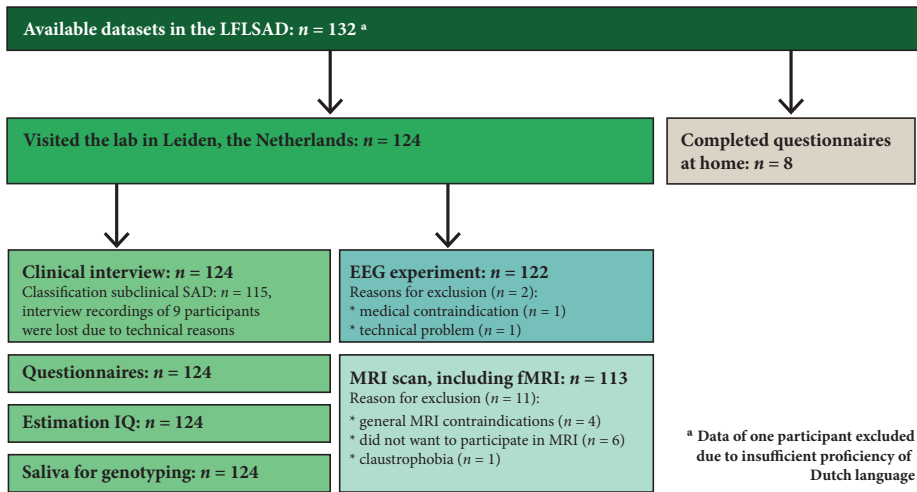


Figure 3.3 Overview of available data within the Leiden Family Lab study on Social Anxiety Disorder.

Characterization of the LFLSAD sample

An overview of clinical diagnoses within the sample is presented in *Table 3.3*, whereas scores on the dimensional self-assessments of anxiety and anxiety-related constructs are displayed in *Table 3.4*. Diagnostic interviews showed that social anxiety was highly prevalent within the sample, in both generations: in addition to the nine probands, who were selected based on a primary diagnosis of SAD, ten of their family members (generation 1: $n = 6$; generation 2: $n = 4$, of whom three proband's SA-children) met the criteria for clinical SAD. Furthermore, 25 family members (six of them proband's SA-children) were classified as having subclinical SAD. Total percentage of (sub)clinical SAD cases within the sample was 38.3 % (generation 1: 40.4 %; generation 2: 36.5 %). The validity of the diagnoses as established by the clinical interviews was confirmed by the self-report questionnaires: participants meeting the DSM-criteria for generalized SAD ($n = 19$) also met literature-based cutoff scores for generalized social anxiety (score ≥ 60 on LSAS (Mennin et al., 2002) or a score ≥ 50 on SAS-A (Storch, Masia-Warner, Dent, Roberti, & Fisher, 2004), with an average score (\pm SD) of 68.1 ± 24.2 on the LSAS ($n = 17$) and a score of 55.5 ± 0.7 ($n = 2$) on the SAS-A, whereas participants with subclinical SAD reported scores of 38.2 ± 23.7 (LSAS; $n = 12$) and 37.5 ± 9.7 (SAS-A; $n = 13$) respectively.

A heritability analysis using SOLAR indicated that (sub)clinical SAD had a moderately high heritability, which was significant at trend-level ($h^2 = 0.43$, $p = 0.09$). Age and gender did not significantly influence the model and were therefore removed (age: $p = 0.78$; gender: $p = 0.62$).

Comorbid diagnoses in the nine probands included depression (past, $n = 3$), panic disorder ($n = 2$), agoraphobia (current, $n = 2$), specific phobia ($n = 1$) and obsessive-compulsive

disorder ($n = 1$). Assessment of other psychopathology in their family members indicated that depression (past and current, $n = 24$), agoraphobia (past and current, $n = 7$) and panic disorder ($n = 5$) were most common diagnoses in the LFLSAD sample. Furthermore, several participants met criteria for alcohol dependence (current and lifetime, $n = 6$), dysthymia (current and past $n = 5$), specific phobia ($n = 4$), generalized anxiety disorder ($n = 3$), separation anxiety ($n = 1$), drug dependence ($n = 1$) and bulimia nervosa ($n = 1$) (Table 3.3).

Table 3.3 Clinical diagnoses of DSM-axis 1 diagnoses within the LFLSAD sample, per generation.

	Generation 1	Generation 2
SAD (number of cases; %) [†]	15; 25.9 %	4; 6.1 %
Subclinical SAD (number of cases; %) [‡]	6; 11.5 %	19; 30.2 %
(Sub)clinical SAD - cumulative (number of cases; %) [‡]	21; 40.4 %	23; 36.5 %
Other psychopathology [§]		
Depressive episode - current	1	1
Depressive episode - past	16	9
Dysthymia - current	1	2
Dysthymia - past	1	1
Panic disorder - lifetime	6	1
Agoraphobia - current	5	2
Agoraphobia - lifetime	1	1
Separation anxiety - present	n.a	1
Specific phobia - present	2	3
Generalized anxiety disorder - present	3	0
Obsessive-compulsive disorder - present	1	0
Alcohol dependence - present	1	1
Alcohol dependence - lifetime	1	3
Drug dependence - lifetime	1	0
Bulimia nervosa - present	1	0

Abbreviation

n.a: not assessed.

Footnotes

[†] Generation 1: data from 58 participants; generation 2: data from 66 participants (30 participants: M.I.N.I.-Plus; 36 participants: M.I.N.I.-Kid).

[‡] Generation 1: data from 52 participants; generation 2: data from 63 participants.

[§] Generation 1: data from 58 participants; generation 2: data from 60 participants (30 participants: M.I.N.I.-Plus; 30 participants M.I.N.I.-Kid).

Table 3.4 Self-report assessments of anxiety and associated constructs within the LFLSAD sample, per generation.

	Generation 1	Generation 2
LSAS-SR [†]	<i>Total</i> 31.4 ± 25.0 (2 – 95)	33.7 ± 23.3 (7 – 98)
	<i>Fear</i> 16.1 ± 13.0 (0 – 52)	17.0 ± 13.2 (0 – 58)
	<i>Avoidance</i> 15.3 ± 12.8 (0 – 50)	16.7 ± 11.1 (2 – 42)
SAS-A [‡]	<i>Total</i>	35.8 ± 9.2 (20 – 56)
	<i>Fear of negative evaluation</i>	14.9 ± 5.2 (8 – 26)
	<i>Social avoidance and distress – new</i>	13.9 ± 4.6 (6 – 26)
	<i>Social avoidance and distress – general</i>	6.9 ± 2.3 (4 – 14)
BFNE-II-R [§]	<i>Total</i> 16.3 ± 11.6 (0 – 48)	15.0 ± 10.5 (0 – 47)
STAI – trait [§]	<i>Total</i> 36.0 ± 10.4 (20 – 64)	35.0 ± 8.1 (21 – 57)
BDI [†]	<i>Total</i> 7.3 ± 8.1 (0 – 32)	7.6 ± 7.0 (1 – 30)
CDI [‡]	<i>Total</i>	6.6 ± 4.5 (0 – 23)
Positive affect [§]	<i>Total</i> 32.3 ± 7.3 (15 – 47)	32.7 ± 5.7 (21 – 45)
Negative affect [§]	<i>Total</i> 17.5 ± 6.9 (10 – 40)	16.9 ± 5.0 (10 – 31)
BIS-BAS ^Δ	<i>BIS – Total</i> 19.8 ± 4.5 (7 – 28)	18.5 ± 3.9 (9 – 28)
	<i>BAS – Total</i> 37.2 ± 5.0 (26 – 50)	39.1 ± 4.3 (31 – 48)
BIS-BAS C [●]	<i>BIS – Total</i>	7.2 ± 4.2 (1 – 17)
	<i>BAS – Total</i>	17.6 ± 5.2 (9 – 27)

Abbreviations

LSAS-SR: Liebowitz Social Anxiety Scale – self report (Fresco et al., 2001; Mennin et al., 2002); SAS-A: Social Anxiety Scale – adolescents (La Greca & Lopez, 1998); BFNE-II-R: revised Brief Fear of Negative Evaluation-II scale (Carleton et al., 2006; Leary, 1983); STAI: State-Trait Anxiety Inventory (Spielberger et al., 1970); BDI-II: Beck Depression Inventory-II (Beck et al., 1996; Van der Does, 2002); CDI: Children's Depression Inventory (Kovacs, 1983, 1985; Timbremont & Braet, 2002); BIS/BAS: Behavioral Inhibition and Behavioral Activation Scales (Carver & White, 1994); BIS/BAS-C: Behavioral Inhibition and Behavioral Activation Scales for children (Muris et al., 2005).

Footnotes

[†] Generation 1: data from 62 participants; generation 2: data from 33 participants.

[‡] Generation 2: data from 37 participants.

[§] Generation 1: data from 60 participants; generation 2: data from 70 participants.

^Δ Generation 1: data from 62 participants; generation 2: data from 70 participants.

[●] Generation 2: data from 18 participants.

Values represent mean ± standard deviation (range).

Characterization of participants with and without (sub)clinical SAD

A characterization of the participants with and without (sub)clinical SAD is presented in Table 3.5. There were no differences between family members with and without (sub) clinical SAD with respect to the presence of other DSM-diagnoses (at Bonferonni-corrected

Table 3.5 Characteristics of participants with and without (sub)clinical SAD.

	(Sub)clinical SAD (<i>n</i> = 44)	No SAD (<i>n</i> = 71)	Statistical analysis
Demographics			
<i>Male / Female (n)</i>	22/ 22	35 / 36	$\chi^2(1) = 0.005, p = 1.00$
<i>Generation 1 / Generation 2 (n)</i>	21/ 23	31 / 40	$\chi^2(1) = 0.18, p = 0.70$
<i>Age in years</i>	30.0 \pm 15.5	30.8 \pm 15.8	$\beta = 0.82, p = 0.78$
<i>Estimated IQ</i>	104.6 \pm 11.8	105.7 \pm 10.8	$\beta = 1.39, p = 0.50$
Other psychopathology (<i>n</i>) [†]			
<i>Depressive episode – current</i>	1	1	$\chi^2(1) = 0.16, p = 1.00$
<i>Depressive episode – past</i>	12	11	$\chi^2(1) = 3.00, p = 0.09$
<i>Dysthymia – current</i>	3	0	$\chi^2(1) = 5.32, p = 0.047^*$
<i>Dysthymia – past</i>	1	1	$\chi^2(1) = 0.17, p = 1.00$
<i>Panic disorder – lifetime</i>	5	2	$\chi^2(1) = 3.88, p = 0.10$
<i>Agoraphobia – current</i>	5	2	$\chi^2(1) = 3.88, p = 0.10$
<i>Agoraphobia – lifetime</i>	0	2	$\chi^2(1) = 1.18, p = 0.53$
<i>Separation anxiety – present</i>	0	1	$\chi^2(1) = 0.63, p = 1.00$
<i>Specific phobia – present</i>	2	3	$\chi^2(1) = 0.02, p = 1.00$
<i>Generalized anxiety disorder – present</i>	2	1	$\chi^2(1) = 1.19, p = 0.55$
<i>Obsessive-compulsive disorder – present</i>	1	0	$\chi^2(1) = 1.74, p = 0.37$
<i>Alcohol dependence – present</i>	1	1	$\chi^2(1) = 0.16, p = 1.00$
<i>Alcohol dependence – lifetime</i>	1	3	$\chi^2(1) = 0.25, p = 1.00$
<i>Drug dependence – lifetime</i>	1	0	$\chi^2(1) = 1.78, p = 0.36$
<i>Bulimia nervosa – present</i>	1	0	$\chi^2(1) = 1.74, p = 0.37$
Self-report measurements			
<i>Social anxiety symptoms (z-score)</i>	3.0 \pm 3.3	0.2 \pm 1.8	See Table 3.6
<i>Fear of negative evaluation</i>	23.4 \pm 12.5	12.5 \pm 8.0	See Table 3.6
<i>Trait anxiety</i>	39.1 \pm 9.6	32.9 \pm 8.5	See Table 3.6
<i>Behavioral inhibition (z-score)</i>	0.4 \pm 1.2	-0.4 \pm 1.0	See Table 3.6
<i>Depressive symptoms (z-score)</i>	0.0 \pm 0.8	-0.5 \pm 0.7	See Table 3.6
<i>Negative affect</i>	20.6 \pm 6.9	15.3 \pm 4.7	See Table 3.6

Footnotes

†: Generation 1: data from 52 participants; generation 2: data from 57 participants (28 participants: M.I.N.I.-Plus; 29 participants M.I.N.I.-Kid).

Values represent mean \pm standard deviation, unless otherwise specified.

Statistical significance

* Significant at uncorrected *p*-value of 0.05.

p -value < 0.003). However, all self-reported measures of interest were significantly related to (sub)clinical SAD (Table 3.6). Age was not a significant predictor in the models; gender was, however, significantly related to the level of the level of behavioral inhibition (at Bonferroni-corrected p -value < 0.008), the level of fear of negative evaluation and the level of negative affect (at uncorrected p -value < 0.05), with higher levels in females compared to males.

Table 3.6 Associations with (sub)clinical SAD.

Constructs	<i>n</i>	Relation with (sub) clinical SAD		Relation with age		Relation with gender	
		β (SE)	<i>p</i>	β (SE)	<i>p</i>	β (SE)	<i>p</i>
Social anxiety (z-score)	115	2.76 (0.45)	$1.3 * 10^{-9} **$	0.02 (0.01)	0.10	0.40 (0.44)	0.36
Fear of negative evaluation	113	10.83 (1.85)	$5.0 * 10^{-9} **$	0.08 (0.06)	0.18	4.10 (1.80)	0.02 *
Trait anxiety	115	5.97 (1.67)	$3.5 * 10^{-4} **$	0.02 (0.05)	0.69	3.09 (1.63)	0.06
Behavioral inhibition (z-score)	115	0.82 (0.19)	$1.7 * 10^{-5} **$	0.00 (0.01)	0.49	0.71 (0.19)	$1.2 * 10^{-4} **$
Depressive symptoms (z-score)	115	0.53 (0.14)	$1.4 * 10^{-4} **$	0.00 (0.00)	0.37	0.17 (0.14)	0.2
Negative affect	115	5.32 (1.04)	$3.1 * 10^{-7} **$	0.02 (0.03)	0.64	2.54 (1.02)	0.01 *

Statistical significance

* Significant at uncorrected p -value of 0.05.

** Significant at Bonferroni-corrected p -value of 0.008.

DISCUSSION

Here, we describe the background, objective, design and methods of the Leiden Family Lab study on Social Anxiety Disorder (LFLSAD), and present data characterizing the sample. The study is unique in several aspects.

To start, the LFLSAD is the first multiplex, multigenerational family study on SAD, including 132 participants from nine families. The composition of the sample (families were selected based on at least two SAD cases within one nuclear family, multiplex, and multiple nuclear families involving two generations from the same family were included, multigenerational; see Figure 3.1) boosts statistical power to observe genetic and environmental effects on SAD-related traits (Williams & Blangero, 1999).

In addition, families were recruited from the general population (Figure 3.2) and none of the participants with SAD within the sample ($n = 19$) was treated for the disorder before entering the study. This is in line with several reports on social anxiety, indicating that SAD is frequently underdiagnosed because of the low help-seeking behavior of patients; furthermore, SAD is often not adequately recognized by clinicians (Alonso et al., 2018; Dingemans et al., 2001; Fehm et al., 2005; Ruscio et al., 2008). Thereby, the sample of the LFLSAD represents socially-anxious families from the community (Dingemans et al., 2001), including participants who are on a daily basis limited by their SAD symptoms (following

criterion G of the DSM-5 definition, stating that ‘the fear, anxiety, or avoidance causes clinically significant distress or impairment in social, occupational, or other important areas of functioning’) (American Psychiatric Association, 2013), but those SAD cases are not a selection of cases who have received treatment for SAD in the past.

Next, following our criteria which were aimed to include families who were enriched for genetic susceptibility to SAD, the disorder was highly prevalent within the sample: while the lifetime prevalence of SAD is estimated to be around 13 % in the general population (Kessler et al., 2012), the prevalence of (sub)clinical SA in the sample was 38.3 %, with a heritability of 0.43. In addition, the scores on the dimensional self-assessments of social anxiety were indicative of elevated levels of social anxiety. It’s interesting to note that, although SAD is often comorbid with major depressive disorder (MDD) (Meier et al., 2015), the prevalence of depressive episodes within the sample was in the range of the general population: the lifetime prevalence of past and/or present depressive episodes within the LFLSAD was 22.9 % (27 cases in 118 participants), while population studies indicated that the lifetime prevalence of MDD within the community ranges between 17.1 % (Jacobi et al., 2004) and 28.2 % (Vandeleur et al., 2017). These results suggest that the sample is specifically enriched for SAD and not for depression.

Furthermore, as the majority of the participants ($n = 124$) visited the lab in Leiden and completed a variety of measurements including, among others, a structured clinical interview, self-report questionnaires, and collection of saliva for future genotyping (*Table 3.1; Figure 3.3*), the LFLSAD sample is an extensively characterized sample. This enables detailed (future) analyses on the relationship between the social anxiety phenotype on the one hand and neurocognitive candidate endophenotypes of SAD on the other.

Here, we presented data on the relationship between (sub)clinical SAD and anxiety-related constructs, showing that (sub)clinical SAD is positively related to increased levels of self-reported social anxiety, fear of negative evaluation and depressive symptoms, to higher trait anxiety, to the temperamental tendency to be behaviorally inhibited, and to higher levels of negative affect (*Table 3.6*). These findings are in line with previous reports indicating a relationship between (sub)clinical social anxiety and these self-reported traits (Bas-Hoogendam, van Steenbergen, Pannekoek, et al., 2017; Campbell et al., 2009; Carleton et al., 2007; Clauss & Blackford, 2012; Goldin, Manber, Hakimi, Canli, & Gross, 2009; Harrewijn et al., 2016; Rytwinski et al., 2009; Stein, Chartier, Lizak, & Jang, 2001) and underscore the validity of the LFLSAD sample.

Looking back at the power analyses performed before the start of the study, which showed that including twelve families of on average ten family members would result in sufficient statistical power, the actual LFLSAD sample contains less families (i.e. nine), but with, on average, more family members per family (14.7 family members). In comparison to the original sample composition, this actual sample contains comparable statistical power to investigate candidate endophenotypes of SAD. The first results on neurocognitive

endophenotypes emerging from the LFLSAD (Bas-Hoogendam, van Steenbergen, van der Wee, et al., 2017c, 2017b; Bas-Hoogendam, van Steenbergen, et al., 2015; Harrewijn, van der Molen, et al., 2017; Harrewijn et al., 2018) underscore the potential of such a study design.

Some limitations of the LFLSAD design should be mentioned. First of all, the LFLSAD has a relatively small sample size, which is due to the novelty and complexity of performing a family study in this population. Furthermore, given the cross-sectional nature of the study, the LFLSAD data do not allow for testing the *state-independency of the candidate neurocognitive endophenotypes* (endophenotype criterion 2). In addition, as no control families were included, comparing the *levels of the candidate endophenotypes between non-affected family members and participants from the general population* (second part of endophenotype criterion 4) is not possible. Finally, we did not acquire data with respect to potential environmental influences like traumatic life events and aversive social experiences, which could play an important role in the etiology and maintenance of SAD (Brook & Schmidt, 2008; Norton & Abbott, 2017; Wong & Rapee, 2016).

CONCLUSION

To conclude, the LFLSAD provides a unique opportunity to examine candidate neurocognitive endophenotypes of this serious disorder. It is our hope that the results of this study will provide clues for future directed gene-linkage studies, to gain more insight in the genetic vulnerability to SAD.

SUPPLEMENTAL METHODS

Pre-registration LFLSAD

Following a pilot phase of the study and upon approval of the Medical Ethical Committee of the LUMC, the basic concepts and hypotheses of the LFLSAD were pre-registered on the Open Science Framework (osf.io) website (<https://osf.io/erums/register/564d31db8c5e4a7c9694b2c0>).

The components of this pre-registration are publicly available and are listed below.

- Wiki of the project ‘Profiling Endophenotypes in Social Anxiety Disorder: a neurocognitive approach’: osf.io/q4wx2/
- Hypothesized Endophenotype: Amygdala (MRI): osf.io/erums
- Hypothesized Endophenotype: Prefrontal Cortex (MRI): osf.io/y5m8q
- Hypothesized Endophenotype: Structure and Connectivity (MRI): osf.io/5dgki
- Hypothesized Endophenotype: Resting-state (EEG): osf.io/gqnit
- Hypothesized Endophenotype: Social Evaluation (EEG): osf.io/gncf6/
- Hypothesized Endophenotype: Social Performance (EEG): osf.io/ru958

Power analyses

Power was computed by simulation, based on an endophenotype with a heritability of 60 % and a correlation of 70 % with SAD; prevalence of SAD was set at 10 %. Families were generated using linear mixed models and correlations between family members were modeled via normally distributed random effects with a correlation structure of two times the kinship matrix. Only families with at least two affected members in one nuclear family were used for estimation of the power.

Detailed procedure structural and functional MRI measurements

Participants were screened for MRI eligibility and invited for participation in the MRI experiment when they had no contraindications (like, for example, metal implants or pregnancy) for undergoing an MRI scan. Preceding the experimental session, children and adolescents were familiarized with the MRI procedure using a mock scanner (Galván, 2010). All participants received explanation of the MRI paradigms and practiced short versions of the MRI tasks on a laptop before the experiment. They were informed about the safety procedures and they were told that they could refrain from continuing the experiment at any time. State anxiety was assessed before and after the MRI scan by a Dutch-translation of the STAI (Spielberger et al., 1970). Scanning was performed using a 3.0 T Philips Achieva MRI scanner (Philips Medical Systems, Best, The Netherlands), equipped with a 32-channel Sensitivity Encoding (SENSE) head coil.

The MRI session consisted of a high-resolution T1 scan, two diffusion tensor imaging (DTI) scans (anterior-to-posterior and posterior-to-anterior direction) and a magnetization transfer ratio (MTR)-scan. In addition, a high-resolution EPI scan and a B0 field map were acquired for registration purposes. Furthermore, fMRI data were collected during resting-state (eyes closed condition) and during two functional paradigms: an amygdala paradigm investigating amygdala habituation, (based on the work of Blackford, Allen, Cowan, & Avery, 2013; Blackford, Avery, Cowan, Shelton, & Zald, 2011; Schwartz, Wright, Shin, Kagan, Whalen, et al., 2003; Schwartz, Wright, Shin, Kagan, & Rauch, 2003; Wedig, Rauch, Albert, & Wright, 2005) and conditioning (Davis et al., 2010) and the revised social norm processing task (SNPT-R) (Bas-Hoogendam, van Steenbergen, Kreuk, van der Wee, & Westenberg, 2017).

Total duration of the MRI protocol was 55 minutes. After the MRI scan, participants completed the second phase of the SNPT-R on a laptop, and they were debriefed about the amygdala paradigm. Furthermore, they were instructed not to share the details of the MRI session with their family members. Total duration of the MRI session was 2.5 hours.

Detailed procedure EEG measurements

Two weeks before the EEG session, participants were asked to send in a portrait photograph of themselves for a task about first impressions. Participants were informed that a panel of peers would evaluate their photograph. This was a cover story to elicit feelings of social evaluation (Harrewijn et al., 2018; Van der Molen et al., 2014). Few days before the EEG session, participants were reminded of the EEG session and were asked to come in with clean hair. When participants arrived in the lab, we explained the EEG procedure and attached the electrodes. EEG was recorded using the BioSemi Active Two system (Biosemi, Amsterdam, The Netherlands) with 64 Ag-AgCl electrodes mounted in an electrode cap (10/20 placement) and 8 external electrodes (to measure horizontal/vertical eye movements, heart rate and for offline re-referencing).

The EEG session consisted of several elements. After a resting-state measurement (eyes closed), participants performed a social judgment paradigm (Harrewijn et al., 2018; Van der Molen et al., 2014) followed by another resting-state measurement (eyes closed). Subsequently, participants were informed about the second EEG task, as they did not know beforehand about this task. EEG data were acquired during a social performance task (Harrewijn, van der Molen, et al., 2017; Harrewijn et al., 2016), while participants watched a neutral nature movie for 20 minutes (to allow for cortisol measures), and during resting-state (eyes closed). Then, the electrodes were detached and participants filled out a questionnaire about their health. Finally, we debriefed all participants and asked them not to tell their family members about the EEG tasks. Total duration of the EEG session was 2.5 hours.

Calculation z-scores

We characterized the LFLSAD sample by comparing the level of social anxiety symptoms (assessed by the LSAS-SR or the SAS-A), the level of fear of negative evaluation (assessed by the BFNE-II-R), the level of behavioral inhibition (BIS; assessed by the BIS/BAS and BIS/BAS-C) and the level of depressive symptoms (assessed with the BDI or CDI) with those of community samples, by computing z-scores. We used the following reference values (mean \pm SD):

- LSAS-SR: 13.5 ± 12.7 (Fresco et al., 2001);
- SAS-A: 34.7 ± 2.3 (Miers, Blöte, Bögels, & Westenberg, 2008);
- behavioral inhibition BIS/BAS: 20.0 ± 3.8 (Carver & White, 1994);
- behavioral inhibition BIS/BAS-C: 6.9 ± 3.9 (Muris et al., 2005);
- BDI-II: 10.6 ± 10.9 (Roelofs et al., 2013);
- CDI: 8.9 ± 5.4 , unpublished data from the study by (Miers et al., 2008).

