



Universiteit
Leiden
The Netherlands

Guide to the heart: Differentiation of human pluripotent stem cells towards multiple cardiac subtypes

Schwach, V.

Citation

Schwach, V. (2020, January 15). *Guide to the heart: Differentiation of human pluripotent stem cells towards multiple cardiac subtypes*. Retrieved from <https://hdl.handle.net/1887/82699>

Version: Publisher's Version

License: [Licence agreement concerning inclusion of doctoral thesis in the Institutional Repository of the University of Leiden](#)

Downloaded from: <https://hdl.handle.net/1887/82699>

Note: To cite this publication please use the final published version (if applicable).

Cover Page



Universiteit Leiden



The handle <http://hdl.handle.net/1887/82699> holds various files of this Leiden University dissertation.

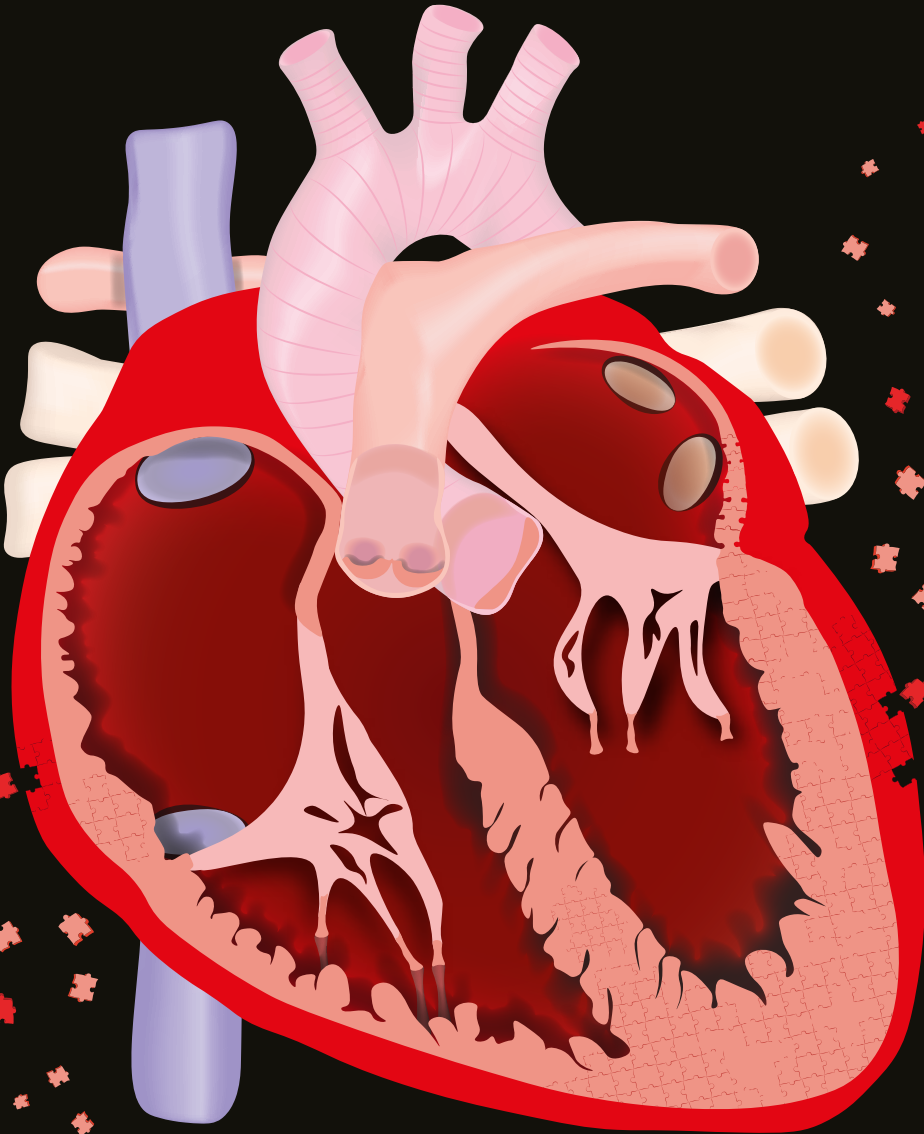
Author: Schwach, V.

Title: Guide to the heart: Differentiation of human pluripotent stem cells towards multiple cardiac subtypes

Issue Date: 2020-01-15

Guide to the Heart

*Differentiation of human pluripotent stem cells
towards multiple cardiac subtypes*



Verena Schwach

