



Universiteit
Leiden
The Netherlands

Particle acceleration in a nearby galaxy cluster pair: the role of cluster dynamics

Botteon, A.; Cassano, R.; Eckert, D.; Brunetti, G.; Dallacasa, D.; Shimwell, T.W.; ... ; Sereno, M.

Citation

Botteon, A., Cassano, R., Eckert, D., Brunetti, G., Dallacasa, D., Shimwell, T. W., ... Sereno, M. (2019). Particle acceleration in a nearby galaxy cluster pair: the role of cluster dynamics. *Astronomy And Astrophysics (0004-6361)*, 630, A77.
doi:10.1051/0004-6361/201936022

Version: Accepted Manuscript

License: [Leiden University Non-exclusive license](#)

Downloaded from: <https://hdl.handle.net/1887/84733>

Note: To cite this publication please use the final published version (if applicable).

Particle acceleration in a nearby galaxy cluster pair: the role of cluster dynamics

A. Botteon^{1,2,3}, R. Cassano², D. Eckert⁴, G. Brunetti², D. Dallacasa^{1,2}, T. W. Shimwell^{3,5}, R. J. van Weeren³, F. Gastaldello⁶, A. Bonafede^{1,2,7}, M. Brüggen⁷, L. Bîrzan⁷, S. Clavico⁸, V. Cuciti⁷, F. de Gasperin⁷, S. De Grandi⁸, S. Etori^{9,10}, S. Ghizzardi⁶, M. Rossetti⁶, H. J. A. Röttgering³ and M. Sereno⁹

¹ Dipartimento di Fisica e Astronomia, Università di Bologna, via P. Gobetti 93/2, I-40129 Bologna, Italy
e-mail: botteon@ira.inaf.it

² INAF - IRA, via P. Gobetti 101, I-40129 Bologna, Italy

³ Leiden Observatory, Leiden University, PO Box 9513, NL-2300 RA Leiden, The Netherlands

⁴ Department of Astronomy, University of Geneva, ch. d'Ecogia 16, 1290 Versoix, Switzerland

⁵ ASTRON, the Netherlands Institute for Radio Astronomy, Postbus 2, NL-7990 AA Dwingeloo, The Netherlands

⁶ INAF - IASF Milano, via A. Corti 12, I-20133 Milano, Italy

⁷ Hamburger Sternwarte, Universität Hamburg, Gojenbergsweg 112, D-21029 Hamburg, Germany

⁸ INAF - Osservatorio Astronomico di Brera, via E. Bianchi 46, I-23807 Merate, Italy

⁹ INAF - Osservatorio di Astrofisica e Scienza dello Spazio, via P. Gobetti 93/3, I-40129, Bologna, Italy

¹⁰ INFN, Sezione di Bologna, viale Berti Pichat 6/2, I-40127, Bologna, Italy

Received XXX; accepted YYY

ABSTRACT

Context. Diffuse radio emission associated with the intra-cluster medium (ICM) is observed in a number of merging galaxy clusters. It is currently believed that in mergers a fraction of the kinetic energy is channeled into non-thermal components, such as turbulence, cosmic rays and magnetic fields, that may lead to the formation of giant synchrotron sources in the ICM.

Aims. Studying merging galaxy clusters in different evolutionary phases is fundamental to understanding the origin of radio emission in the ICM.

Methods. We observed the nearby galaxy cluster pair RXC J1825.3+3026 ($z \sim 0.065$) and CIZA J1824.1+3029 ($z \sim 0.071$) at 120 – 168 MHz with the LOw Frequency ARray (LOFAR) and made use of a deep (240 ks) *XMM-Newton* dataset to study the non-thermal and thermal properties of the system. RXC J1825.3+3026 is in a complex dynamical state, with a primary on-going merger in the E-W direction and a secondary later stage merger with a group of galaxies in the SW, while CIZA J1824.1+3029 is dynamically relaxed. These two clusters are in a pre-merger phase.

Results. We report the discovery of a Mpc-scale radio halo with a low surface brightness extension in RXC J1825.3+3026 that follows the X-ray emission from the cluster center to the remnant of a galaxy group in the SW. This is among the least massive systems and the faintest giant radio halo known to date. Contrary to this, no diffuse radio emission is observed in CIZA J1824.1+3029 nor in the region between the pre-merger cluster pair. The power spectra of the X-ray surface brightness fluctuations of RXC J1825.3+3026 and CIZA J1824.1+3029 are in agreement with the findings for clusters exhibiting a radio halo and the ones where no radio emission has been detected, respectively.

Conclusions. We provide quantitative support to the idea that cluster mergers play a crucial role in the generation of non-thermal components in the ICM.

Key words. radiation mechanisms: non-thermal – radiation mechanisms: thermal – galaxies: clusters: individual: RXC J1825.3+3026 – galaxies: clusters: individual: CIZA J1824.1+3029 – galaxies: clusters: general – galaxies: clusters: intracluster medium

1. Introduction

Galaxy clusters form through the continuous accretion of matter over cosmic time. During accretion, turbulent flows and shock waves are produced in the intra-cluster medium (ICM) and in some circumstances they may generate cluster-scale synchrotron emission that is commonly referred to as giant radio halos or relics (e.g. van Weeren et al. 2019, for a recent review). The former category consists of apparently unpolarized sources found at the cluster center with a morphology similar to that of the X-ray emitting gas. The latter are elongated and often highly polarized at decimetric wavelengths and are located in the cluster outskirts. Both halos and relics are generally observed in massive

dynamically disturbed clusters (e.g. Cassano et al. 2010b, 2013; Cuciti et al. 2015) and trace relativistic electrons and magnetic fields distributed in the ICM on Mpc-scales that are eventually (re)accelerated and amplified during merger events (e.g. Brunetti & Jones 2014, for a review).

Observations at low radio frequencies with the LOw Frequency ARray (LOFAR) are revealing unprecedented details of the complex diffuse emission from the ICM (e.g. Bîrzan et al. 2019; Botteon et al. 2019; Clarke et al. 2019; Hoang et al. 2019a,b; Mandal et al. 2019; Savini et al. 2019; Wilber et al. 2019, for the most recent works). In particular, LOFAR is entering into unexplored territories for the study of non-thermal phenomena from the ICM, allowing us to explore the processes

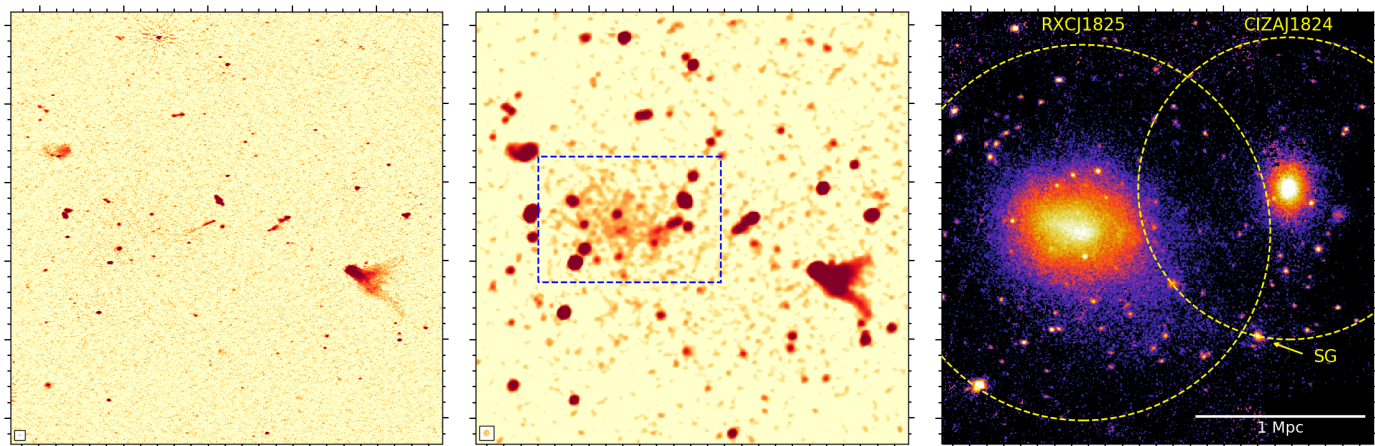


Fig. 1. The cluster pair RXCJ1825/CIZAJ1824 as observed with LOFAR HBA at high (*left*) and medium (*center*) resolution, and with *XMM-Newton* in the 0.5 – 2.0 keV band (*right*). The resolution and rms noise of the LOFAR images are $8.5'' \times 4.7''$ and $\sigma = 110 \mu\text{Jy beam}^{-1}$ (high), and $27.1'' \times 24.4''$ and $\sigma = 220 \mu\text{Jy beam}^{-1}$ (medium). The beam sizes are shown in the bottom left corners. The blue box in the LOFAR medium resolution image shows the region where we evaluate the flux density of the halo. Yellow circles in the *XMM-Newton* image denote the approximate location of r_{500} for each cluster (cf. Tab. 1) while the arrow indicates the Southern Galaxy (SG). The displayed images have matched coordinates and cover a FoV of $33' \times 33'$ (cf. Fig. 2).

undergoing in the very early phases of a merger, well before the core crossing (Bonafede et al. 2018; Botteon et al. 2018, 2019; Govoni et al. 2019). Theoretical works show that equatorial shocks and turbulent flows should be excited in the ICM between pre-merging clusters; however, the kinetic energy associated with shock and turbulence at this phase is expected to be smaller than in merging systems (e.g. Vazza et al. 2017; Ha et al. 2018) and it is unclear if a significant fraction of this energy can be channeled into non-thermal components already at this stage.

The galaxy clusters RXC J1825.3+3026 and CIZA J1824.1+3029 (hereafter RXCJ1825 and CIZAJ1824, respectively) constitute a binary system (mass ratio 1:1.6) at low redshift also known as Lyra complex (Clavico et al. 2019; Girardi et al. 2019). Due to its low Galactic latitude, this system has been challenging to observe but the first focused X-ray (Clavico et al. 2019) and optical (Girardi et al. 2019) studies have recently been completed (see Tab. 1 for the main properties of the two clusters). However, to date, no targeted radio observations have been published. The picture emerging from both X-ray and optical data is that RXCJ1825 and CIZAJ1824 are gravitationally connected but do not have interacted yet, i.e. they are in a pre-merger phase. Whereas CIZAJ1824 is dynamically relaxed, RXCJ1825 (i.e. the most massive cluster of the system) shows clear signatures of on-going merging: primarily, two brightest cluster galaxies at the center and an irregular X-ray morphology (Clavico et al. 2019). In addition to this main merger, a minor collision also occurred in the SW periphery of RXCJ1825, where an extension of the X-ray emission is found between RXCJ1825 and the Southern Galaxy (SG in Fig. 1, right panel). This is an elliptical galaxy showing evidence for a ~ 1 keV “corona” surrounded by slightly hotter gas (~ 2 keV), suggesting that this is the remnant of a group of galaxies that was ram pressure stripped by the interaction with RXCJ1825 and caused the X-ray surface brightness extension in the SW (Clavico et al. 2019). All these features point towards a complex system involving multiple components, making this target an excellent candidate to search for diffuse synchrotron sources in the ICM at different dynamical stages. In particular, we are observing i) a relaxed cluster (CIZAJ1824), ii) an on-going merger (RXCJ1825, in the E-W), iii) a pre-merger (the pair RXCJ1825/CIZAJ1824) and iv) a post-merger (RXCJ1825 and a group of galaxies, in the SW).

Table 1. Properties of RXCJ1825 and CIZAJ1824. Redshifts are taken from Girardi et al. (2019) while M_{500} and r_{500} are derived from the deprojected mass profiles and are taken from Ettori et al. (2019, RXCJ1825) and Clavico et al. (2019, CIZAJ1824). The luminosity within r_{500} in the 0.1 – 2.4 keV band L_{500} and the average temperature $\langle kT \rangle$ is from Clavico et al. (2019).

	RXCJ1825	CIZAJ1824
Redshift	0.065	0.071
Right ascension (h, m, s)	18 25 20.0	18 24 06.8
Declination ($^{\circ}$, $'$, $''$)	+30 26 11.2	+30 29 32.5
M_{500} ($10^{14} M_{\odot}$)	4.08 ± 0.13	2.46 ± 0.63
r_{500} (kpc)	1105 ± 12	932 ± 79
L_{500} (10^{44} erg s $^{-1}$)	2.42 ± 0.02	0.74 ± 0.02
$\langle kT \rangle$ (keV)	4.86 ± 0.05	2.14 ± 0.05
Scale (kpc arcsec $^{-1}$)	1.248	1.354

In this paper, we report on the results from deep radio observations targeting the Lyra complex using LOFAR High Band Antennas (HBA). We assume a Λ CDM cosmology with $\Omega_{\Lambda} = 0.7$, $\Omega_m = 0.3$, $H_0 = 70$ km s $^{-1}$ Mpc $^{-1}$, and adopt the convention $S_{\nu} \propto \nu^{-\alpha}$ for radio synchrotron spectrum afterwards.

2. Observations and data reduction

2.1. LOFAR

The cluster pair RXCJ1825/CIZAJ1824 was observed with LOFAR in HBA_DUAL_INNER mode on 21 June 2018 (project code: LC10_013). The observation was performed following the scheme of the LOFAR Two-meter Sky Survey (LoTSS; Shimwell et al. 2017), i.e. 8 hr on-source time bookended by two 10 min scans of the flux calibrator 3C295 using LOFAR HBA operating in the 120 – 168 MHz frequency band. The 48 MHz bandwidth is centered at the central frequency 144 MHz, which is also the reference frequency for the LOFAR images shown here.

We make use of the direction-dependent data reduction pipeline¹ v2.2 developed by the LOFAR Surveys Key Science

¹ <https://github.com/mhardcastle/ddf-pipeline>

Project. This latest version of the pipeline includes improvements in the calibration and imaging of extended sources and is currently adopted to process LoTSS observations (see Section 5 in Shimwell et al. 2019), and will be thoroughly discussed in Tasse et al. (in prep.). The data processing exploits PREFAC-TOR (van Weeren et al. 2016; Williams et al. 2016; de Gasperin et al. 2019), KILLMS (Tasse 2014a,b; Smirnov & Tasse 2015) and DDFACET (Tasse et al. 2018) to perform direction-independent and direction-dependent calibration and imaging of the entire LOFAR field-of-view (FoV). To improve the image quality towards the target field, we subtract out from the uv -data all the sources in the LOFAR FoV using the models derived from the pipeline except those in a $38.3' \times 38.3'$ region containing RXCJ1825 and CIZAJ1824. Then, we perform additional phase and amplitude self-calibration loops to correct the residual artifacts in the small extracted region where the direction-dependent errors are assumed to be negligible. The details of this extraction and re-calibration step will be discussed in a forthcoming paper (van Weeren et al., in prep.).

Images at different resolutions are produced with WSCLEAN v2.6 (Offringa et al. 2014) by using the Briggs weighting scheme (Briggs 1995) with $\text{robust}=-0.5$ and suitable tapering of the visibilities. An inner uv -cut of 80λ , corresponding to an angular scale of $43'$, has been applied to the data to drop the shortest spacings where calibration is more challenging. The LOFAR high- and medium-resolution images of the clusters are shown in Fig. 1.

Due to inaccuracies in the LOFAR HBA beam model, the LOFAR flux density scale can show systematic offsets (see van Weeren et al. 2016; Hardcastle et al. 2016). We check and correct the flux density scale by comparing the brightest compact sources extracted from the TIFR GMRT Sky Survey (TGSS; Intema et al. 2017) with the LOFAR image. Throughout the paper, we have applied the correction factor computed from the mean LOFAR/TGSS integrated flux density ratio of 1.15; uncertainties on the LOFAR flux densities are dominated by the calibration error of 20%, which has been adopted in agreement with LoTSS measurements (Shimwell et al. 2019).

2.2. XMM-Newton

RXCJ1825 was observed in the context of the XMM-Newton Cluster Outskirts Project (X-COP; Eckert et al. 2019; Ettori et al. 2019; Ghirardini et al. 2019) for a total exposure time of 240 ks divided into two central pointings and four offset pointings, one of whose containing CIZAJ1824. We retrieved and processed these observations following standard data reduction recipes of the XMM-Newton Extended Source Analysis Software (ESAS; Snowden et al. 2008). In Fig. 1 (right panel) we show the XMM-Newton background-subtracted and exposure-corrected mosaic image in the 0.5 – 2.0 keV band of the cluster pair. For more details about the X-ray data analysis and interpretation, the reader is referred to Clavico et al. (2019).

3. Results

3.1. Diffuse emission in the ICM

The LOFAR high-resolution image of the Lyra complex shows numerous radio galaxies with a wide range of morphologies (Fig. 1, left panel). The most prominent is the tailed radio galaxy that is located between CIZAJ1824 and the Southern Galaxy. This is discussed in Section 3.2. At a resolution of $27.1'' \times 24.4''$ (Fig. 1, central panel), diffuse radio emission from the ICM

of RXCJ1825 is clearly observed. The source follows the X-ray thermal emission and is slightly elongated in the E-W direction. Due to its location in the system, morphology, and cluster-size extent, we classify this source as a giant radio halo. In contrast, most of the radio emission from the vicinity of CIZAJ1824 is associated with the brightest cluster galaxy at its center, as commonly observed in cool-core systems. At this medium resolution, no significant radio emission is detected between RXCJ1825, CIZAJ1824, and the Southern Galaxy.

To better recover the emission from the radio halo in RXCJ1825 and study its connection with the thermal gas, we produce a LOFAR low-resolution image by applying a Gaussian uv -taper of $40''$ and then convolving it with a Gaussian beam of $60'' \times 60''$ ($\sim 75 \text{ kpc} \times 75 \text{ kpc}$) in the image plane. In Fig. 2 (left panel) we show the LOFAR low-resolution contours overlaid on the XMM-Newton image. This image shows more clearly the radio halo emission at the cluster center and also suggests the presence of a low surface brightness extension from the halo towards the Southern Galaxy. The halo has a projected size of $1.0 \times 0.8 \text{ Mpc}$, if we take into account the radio emission above the 3σ level. The halo extension towards the Southern Galaxy is patchy at this confidence level; the 1.5σ contours highlight better the presence of the underlying low surface brightness extension of emission which remarkably follows the X-ray morphology of the cluster (Fig. 2, left panel). To improve the signal-to-noise of this feature, we produce a lower resolution image by using a Gaussian beam of $90'' \times 90''$ ($\sim 112 \text{ kpc} \times 112 \text{ kpc}$). Fig. 2 (right panel) shows the LOFAR very low-resolution contours where the extension of the radio halo towards the Southern Galaxy in the SW is detected at 3σ . The linear extent of the diffuse radio emission in this direction is up to $\sim 1.8 \text{ Mpc}$. In Section 4 we discuss the possible origin of this extension, which is likely related to merger between RXCJ1825 and a galaxy group. Finally, we note that in the LOFAR low-resolution images of Fig. 2, the radio emission located between RXCJ1825 and CIZAJ1824 is related to a double radio galaxy (cf. Fig. 1, left panel).

We evaluate the flux density of the radio halo in the blue box in Fig. 1 (central panel), which roughly covers the 3σ contour of Fig. 2 (left panel), adopting the two following procedures.

As a first approach, we subtract the clean component models of the discrete sources observed at high resolution in Fig. 1 (left panel) from the visibilities, re-image the new dataset, and evaluate the flux density in the source-subtracted images. In this case, the halo flux density is $S_{144} = 153 \pm 31 \text{ mJy}$ at 144 MHz and is consistent at medium and low resolution.

As a second approach, we measure the flux density in the blue box of Fig. 1 (central panel) taking into account both discrete sources and diffuse emission and then subtract the flux densities of the 18 discrete sources measured in the high-resolution image. This step is useful to evaluate the accuracy of the subtraction of radio galaxies with extended structures (3 out of 18, accounting for $\sim 208 \text{ mJy}$), such as those observed in the direction of RXCJ1825. The total (discrete sources+diffuse) flux density is $\sim 885 \text{ mJy}$, consistently derived in the medium- and low-resolution images. By subtracting the flux density of $\sim 712 \text{ mJy}$ due to the 18 embedded sources, a flux density of $S_{144} = 173 \pm 35 \text{ mJy}$ is associated with the ICM emission. This value is higher than that found in the first approach and highlights the complexity of subtracting the extended emission of the discrete sources embedded in the radio halo.

For the remainder of this paper, we adopt the average flux density value of $S_{144} = 163 \pm 47 \text{ mJy}$ for the radio halo in RXCJ1825. The radio power at 144 MHz is $P_{144} = (1.7 \pm 0.5) \times 10^{24} \text{ W Hz}^{-1}$. If we assume a typical halo spectral index

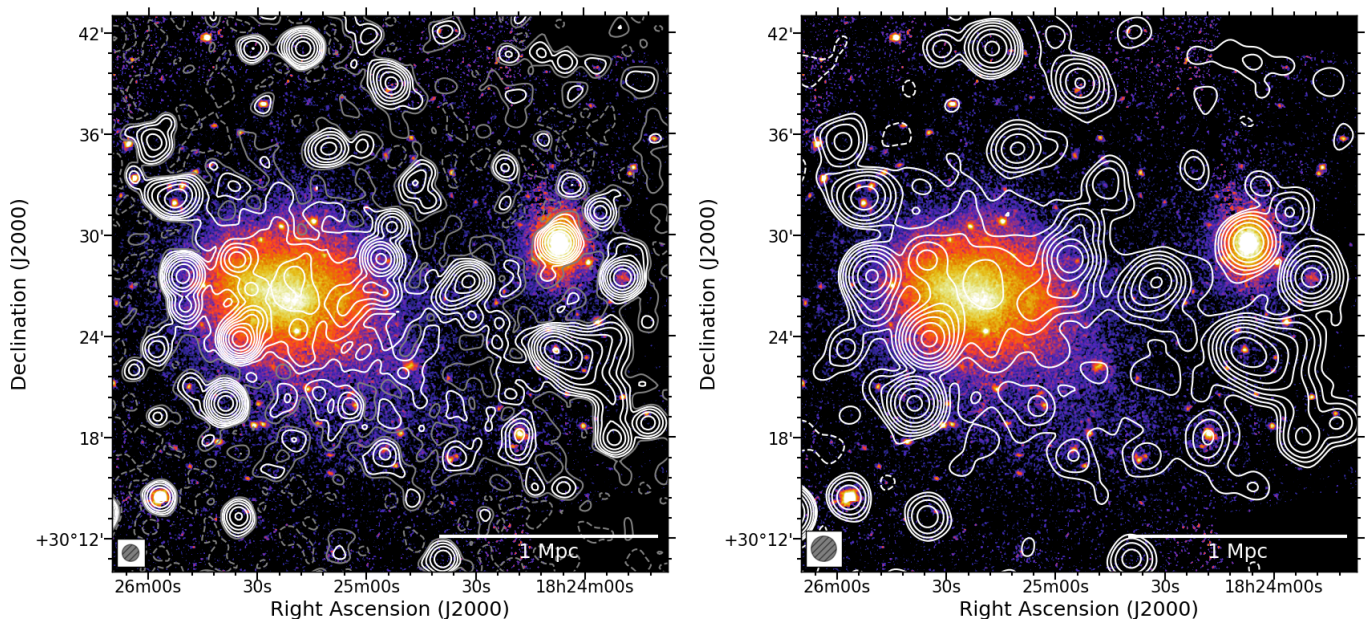


Fig. 2. LOFAR radio contours overlaid on the *XMM-Newton* color image. *Left:* low-resolution ($60'' \times 60''$) contours spaced by a factor of 2 starting from 1.5σ (the first contour is reported in gray), where $\sigma = 300 \mu\text{Jy beam}^{-1}$. The negative -1.5σ contours are shown in dashed gray. *Right:* very low-resolution ($90'' \times 90''$) contours spaced by a factor of 2 starting from 3σ , where $\sigma = 415 \mu\text{Jy beam}^{-1}$. The negative -3σ contours are shown in dashed. The beams are displayed in the bottom left corners.

of $\alpha = 1.3$ (e.g. Feretti et al. 2012, and references therein), the expected flux density at 1.4 GHz is $S_{1.4} = 8.5 \pm 2.5 \text{ mJy}$, implying a radio power of $P_{1.4} = (8.7 \pm 2.5) \times 10^{22} \text{ W Hz}^{-1}$. This radio power is a factor of 2 – 4 below the extrapolation at the cluster mass (or luminosity) of the best-fit $P_{1.4} - M_{500}$ (or $P_{1.4} - L_{500}$) relation of Cassano et al. (2013). The flux density values expected at 1.4 GHz are below the sensitivity level of our reprocessed NRAO VLA Sky Survey (NVSS; Condon et al. 1998) images, which have an rms of $0.22 \text{ mJy beam}^{-1}$. However, very short snapshots imply sparse uv -coverage which is known to prevent the detection of large-scale low surface brightness diffuse emission. Therefore we could not provide a meaningful constraint on the spectral index of the radio halo. Deep, pointed JVLA and/or uGMRT observations are planned to perform this kind of analysis.

To the best of our knowledge, RXCJ1825 is the least powerful giant radio halo discovered so far and one of the smallest cluster known to date to host this kind of diffuse emission. It probes regions in the $P_{1.4} - M_{500}$ and $P_{1.4} - L_{500}$ planes which are poorly constrained due to the limited sensitivity of previous instruments (e.g. Cassano et al. 2013; Birzan et al. 2019). LOFAR and future radio interferometers (such as the Square Kilometer Array) have the sensitivity to explore the lower-end of the correlations and to test the theoretical models of radio halo formation in these regimes (e.g. Cassano et al. 2010a, 2012).

We can estimate an upper limit to the flux density of the non-detected diffuse emission in CIZAJ1824 via $S = A \times \sigma$ (e.g. Hoang et al. 2018). If we consider a conservatively large radio halo area of $A = 250^2 \pi \text{ kpc}^2$ and the noise of our low-resolution LOFAR image, we obtain an upper limit of $S_{144} < 8.1 \text{ mJy}$ for the level of diffuse emission at the center of CIZAJ1824. Assuming, again, a spectral index index of $\alpha = 1.3$, this would imply a radio power more than a factor of 10 below the extrapolation of the $P_{1.4} - M_{500}$ relation, underlying the dichotomy between RXCJ1825 (merger, with radio halo) and CIZAJ1824 (relaxed, without diffuse radio emission).

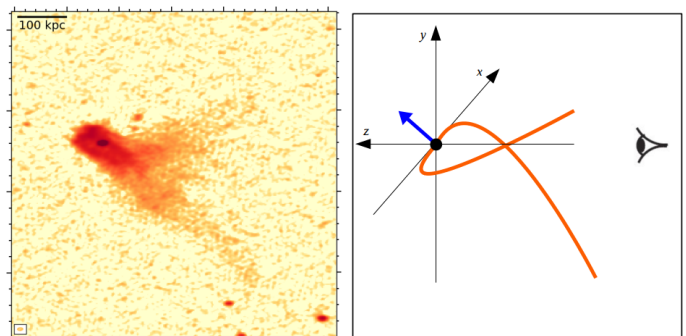


Fig. 3. Zoom-in of the tailed radio galaxy in Fig. 1 (left panel). A cartoon showing the projection that could explain the source morphology is also reported. The galaxy is moving in the direction indicated by the blue arrow.

3.2. Tailed radio galaxy

A bright tailed radio galaxy is observed between CIZAJ1824 and the Southern Galaxy. Girardi et al. (2019) found that the host galaxy, which is cospatially coincident with the nucleus of the radio galaxy, has redshift $z = 0.0699 \pm 0.0003$, hence it is part of the Lyra complex, which mean redshift is $\langle z \rangle = 0.0674 \pm 0.0003$ (based on 198 spectroscopically confirmed members of the system). The flux density of the source is $S_{144} = 577 \pm 115 \text{ mJy}$.

Tailed radio galaxies are commonly divided into narrow-angle and wide-angle sources, depending on the angle between the radio jets/lobes as they deploy in the ICM (e.g. Miley 1980). In the case (Fig. 3), the nucleus of the radio galaxy is embedded in a cocoon of emission with a forked diffuse elongation. Due to the lack of high-resolution data, at the moment it is premature to classify this source in one of the two above-mentioned classes. Its morphology could be due to projection effects related to the motion of the host galaxy moving at large angle with respect to the plane of the sky (Girardi et al. 2019), similarly to the case of NGC 7385 (Rawes et al. 2015). A cartoon indicating the pro-

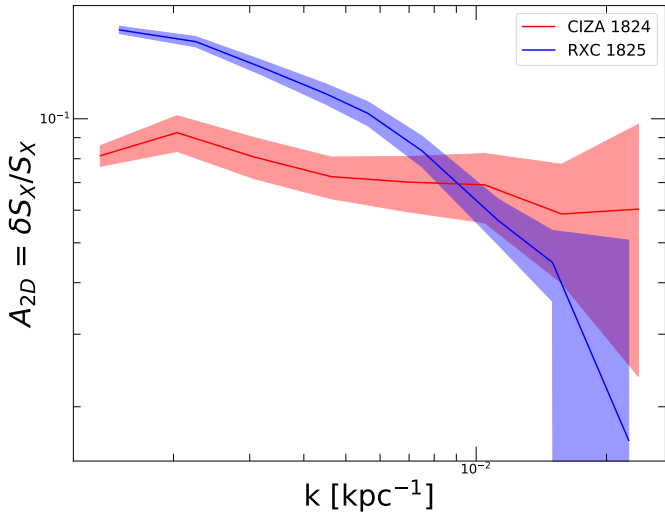


Fig. 4. Fractional amplitude of projected (2D) X-ray surface brightness fluctuations $A_{2D} = (P_{2D}2\pi k^2)^{1/2}$ for RXCJ1825 (blue) and CIZAJ1824 (red) as a function of wave number k . The power spectra P_{2D} were extracted within a circle of 200 kpc radius around the X-ray peak of both structures. The shaded areas show the 1σ confidence intervals for both regions.

posed scenario is shown in Fig. 3. Distorted radio galaxies can be generated by the interaction between the tails and the surrounding ICM, providing another demonstration of the complexity of the system.

4. Discussion

The detection of a radio halo in the dynamically disturbed cluster RXCJ1825 and the absence of diffuse radio emission in the cool-core system CIZAJ1824 strongly support the idea that merger events play a fundamental role in the generation of non-thermal components in the ICM (e.g. Cassano et al. 2010b).

The Fourier power spectrum analysis of the X-ray surface brightness fluctuations provides information on the Mach numbers of turbulent motions in the ICM (e.g. Gaspari & Churazov 2013; Gaspari et al. 2014; Zhuravleva et al. 2014). We use the deep *XMM-Newton* observation to extract the power spectra of RXCJ1825 and CIZAJ1824 within a radius of 200 kpc from the X-ray peak following the method of Eckert et al. (2017). As shown in Fig. 4, the amplitude of gas density fluctuations $\delta\rho/\rho$ at the maximum scale of the main cluster RXCJ1825 is a factor of ~ 2 larger than that of the cool-core CIZAJ1824. Since the sound speed c_s in RXCJ1825 is a factor ~ 1.5 higher, this would imply that the 3D turbulent velocity dispersion $\sigma_v \approx 3.7c_s\delta\rho/\rho$ of the main system is ~ 3 times higher than that of CIZAJ1824 (under the hypothesis of isotropic turbulent motions, see Gaspari & Churazov 2013). The values of the 2D amplitude of RXCJ1825 and CIZAJ1824 at the largest scale are in line with those observed for radio halo and non-radio halo clusters, respectively, in the sample analyzed by Eckert et al. (2017).

The indication of the low surface brightness radio extension following the X-ray extension towards the SW direction suggests past interaction between RXCJ1825 and the galaxy group which hosted the Southern Galaxy. This region and that between RXCJ1825 and CIZAJ1824 have been investigated in detail by Clavico et al. (2019) by using the deep *XMM-Newton* obser-

vation². Whereas no residual emission is observed in the region between RXCJ1825 and CIZAJ1824, the region between RXCJ1825 and the Southern Galaxy appears dynamically active. We extract one-dimensional brightness profiles along the slices reported in Fig. 5 (left panels) using radio (discrete source subtracted) and X-ray images with a comparable resolution of $60''$ (e.g. Shimwell et al. 2016) to quantitatively show that there is a connection between the thermal and non-thermal emission of the ICM. The locations of the two slices are chosen to avoid contaminating sources in the X-ray image. Although the radio image is naturally more sensitive to local brightness variations (e.g. due to residual emission left over by subtracted discrete sources), the profiles of Fig. 5 (right panels) show an overall good match between the X-ray and radio brightness distribution (apart the absence of radio emission from CIZAJ1824), indicating a tight connection between the two components and possibly a common origin. The X-ray extension towards the SW could be due to gas from the group of galaxies that hosted the Southern Galaxy in the past and that has been stripped by ram pressure during the interaction with RXCJ1825 or to gas belonging to RXCJ1825 generated by tidal interaction with the group. In the first case, the radio emission in this region may be explained as synchrotron emission by particles re-accelerated by the turbulence produced in the wake of the group during its motion towards the cluster outskirts. In the second case, the radio emission could result from the advection of the relativistic and thermal plasma from the cluster center to the SW due to the high-velocity motion of the galaxy group. The X-ray spectral analysis does not allow to discriminate between these two possibilities as the temperature of the ICM surrounding the “corona” of the Southern Galaxy is consistent either with that once belonged to a group, or with that of RXCJ1825 at this radial distance (see Clavico et al. 2019).

Girardi et al. (2019) studied the merger kinematics between RXCJ1825 and CIZAJ1824 adopting the two-body model described in detail by Beers et al. (1982) and Gregory & Thompson (1984) and concluded that the clusters are gravitationally bounded and very likely in an incoming orbit. The fact that no surface brightness nor temperature enhancement is observed in the X-rays between RXCJ1825 and CIZAJ1824 (Fig. 5) suggests that the gas between the clusters has not been compressed and heated yet, indicating that these objects are in a pre-merger phase. We do not find any evidence of diffuse radio emission between RXCJ1825 and CIZAJ1824 in our LOFAR data, confirming the picture drawn by optical and X-ray analyses. So far, possible diffuse radio emission in the ICM between two galaxy clusters has been reported only in the pairs A1758N-A1758S (Botteon et al. 2018) and A399-A401 (Govoni et al. 2019).

5. Conclusions

We have presented results from a LOFAR HBA observation of the low redshift galaxy cluster pair RXCJ1825/CIZAJ1824. Recent optical and X-rays studies showed that this system is in a pre-merger phase, CIZAJ1824 is a cool-core cluster, while RXCJ1825 is dynamically disturbed and is undergoing a main merger in the E-W direction and experienced an additional collision with a group of galaxies in the SW. Our findings can be summarized as follows.

² In particular, they (i) modeled the surface brightness distribution of the two clusters assuming two elliptical single- β model profiles and produced a residual image by comparing the difference pixel-by-pixel between data and model and (ii) created unsharp masked images with different Gaussian smoothing to search for surface brightness features in the ICM.

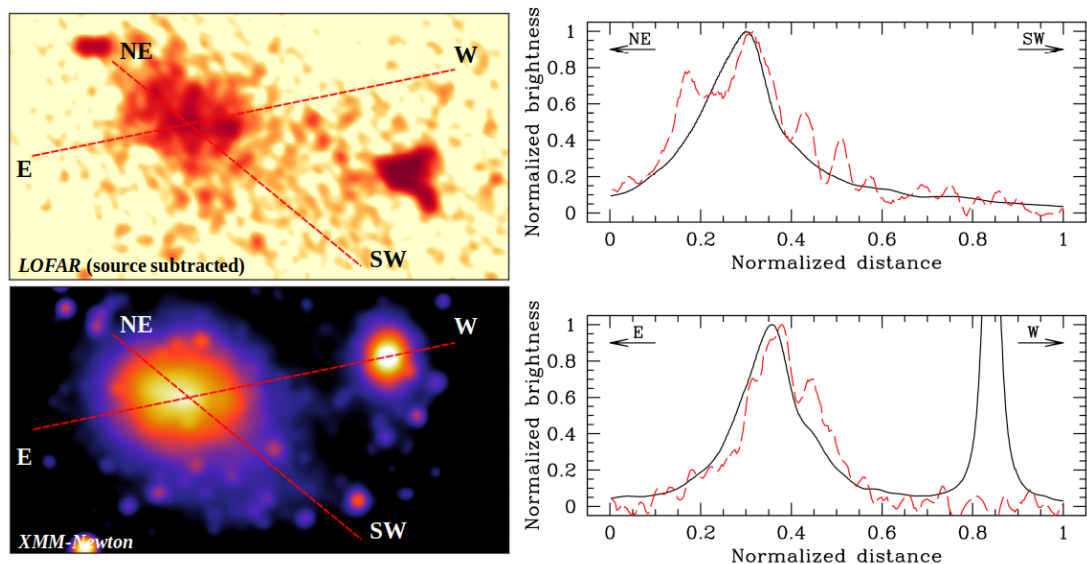


Fig. 5. One-dimensional brightness profiles of the X-ray (black lines) and radio emission (red dashed lines) extracted in the dashed lines reported in the left panels whose display the LOFAR (discrete source subtracted) and *XMM-Newton* images convolved with a comparable resolution of $60''$. The profiles are normalized at the brightness peak of RXCJ1825 in each band.

1. We discover a giant radio halo in RXCJ1825. The halo has a projected size of $1.0 \text{ Mpc} \times 0.8 \text{ Mpc}$ and an integrated flux density in the range $S_{144} = 163 \pm 47 \text{ mJy}$, corresponding to a radio power of $P_{144} = (1.7 \pm 0.5) \times 10^{24} \text{ W Hz}^{-1}$.
2. RXCJ1825 is the least powerful radio halo known to date and one of the least massive systems hosting such an object. Assuming a spectral index $\alpha = 1.3$, it would fall a factor of 2–4 below the extrapolation of the current $P_{1.4} - M_{500}$ relation in the low-mass regime.
3. The radio halo has a low surface brightness extension in the direction of the Southern Galaxy, leading to a maximum linear extent of the diffuse radio emission up to $\sim 1.8 \text{ Mpc}$. The remarkable spatial coincidence between the thermal and non-thermal emission indicates that this feature is a consequence of the energy dissipated on small scales due to the interaction between RXCJ1825 and a galaxy group.
4. The radio emission from CIZAJ1824 comes from the brightest cluster galaxy, as commonly observed in relaxed systems. The highly sensitive LOFAR observation has allowed us to place an upper limit for the diffuse radio emission a factor of 10 below the extrapolation of the $P_{1.4} - M_{500}$ relation.
5. No diffuse emission is detected between RXCJ1825 and CIZAJ1824, which are in a pre-merger phase.

Overall, the dichotomy observed between the dynamical states, radio properties, and power spectra of X-ray surface brightness fluctuations of the two galaxy clusters paints a consistent picture connecting cluster mergers and the generation of diffuse radio emission in the ICM.

Our results show that LOFAR has the potential to detect new extended radio sources in the ICM in nearby and low-mass clusters that were previously missed by old generation instruments/surveys. This allows us to open a new window into the study of diffuse emission in these systems that is crucial to constrain the low-power/low-mass end of the $P_{1.4} - M_{500}$ scaling relation.

Acknowledgements. We thank M. Girardi and W. Boschin for sharing with us details of their optical analysis and the anonymous referee for useful suggestions. RJvW acknowledges support from the VIDII research programme with

project number 639.042.729, which is financed by the Netherlands Organisation for Scientific Research (NWO). ABon acknowledges financial support from the ERC-Stg DRANOEL, no 714245, and from the MIUR grant FARE SMS. SE acknowledges financial contribution from the contracts ASI 2015-046-R.0. SE and MS acknowledge financial contribution from the contract ASI-INAF n.2017-14-H.0. HJAR acknowledges support from the ERC Advanced Investigator programme NewClusters 321271. This paper is based (in part) on data obtained with the International LOFAR Telescope (ILT) under project code LC10_013. LOFAR (van Haarlem et al. 2013) is the Low Frequency ARray designed and constructed by ASTRON. It has observing, data processing, and data storage facilities in several countries, which are owned by various parties (each with their own funding sources), and are collectively operated by the ILT foundation under a joint scientific policy. The ILT resources have benefited from the following recent major funding sources: CNRS-INSU, Observatoire de Paris and Université d’Orléans, France; BMBF, MIWF-NRW, MPG, Germany; Science Foundation Ireland (SFI), Department of Business, Enterprise and Innovation (DBEI), Ireland; NWO, The Netherlands; The Science and Technology Facilities Council, UK; Ministry of Science and Higher Education, Poland; Istituto Nazionale di Astrofisica (INAF), Italy. This research made use of the Dutch national e-infrastructure with support of the SURF Cooperative (e-infra 180169) and the LOFAR e-infra group, and of the LOFAR IT computing infrastructure supported and operated by INAF, and by the Physics Dept. of Turin University (under the agreement with Consorzio Interuniversitario per la Fisica Spaziale) at the C3S Supercomputing Centre, Italy. The Jülich LOFAR Long Term Archive and the German LOFAR network are both coordinated and operated by the Jülich Supercomputing Centre (JSC), and computing resources on the Supercomputer JUWELS at JSC were provided by the Gauss Centre for Supercomputing e.V. (grant CHTB00) through the John von Neumann Institute for Computing (NIC). This work is also based on observations obtained with *XMM-Newton*, an ESA science mission with instruments and contributions directly funded by ESA Member States and NASA. This research made use of APLpy, an open-source plotting package for Python (Robitaille & Bressert 2012).

References

- Beers, T., Geller, M., & Huchra, J. 1982, *ApJ*, 257, 23
 Bîrzan, L., Rafferty, D., Cassano, R., et al. 2019, *MNRAS*, 487, 4775
 Bonafede, A., Brüggén, M., Rafferty, D., et al. 2018, *MNRAS*, 478, 2927
 Botteon, A., Shimwell, T., Bonafede, A., et al. 2018, *MNRAS*, 478, 885
 Botteon, A., Shimwell, T., Bonafede, A., et al. 2019, *A&A*, 622, A19
 Briggs, D. 1995, in *Bulletin of the American Astronomical Society*, Vol. 27, American Astronomical Society Meeting Abstracts, 1444
 Brunetti, G. & Jones, T. 2014, *IJMPD*, 23, 30007
 Cassano, R., Brunetti, G., Norris, R., et al. 2012, *A&A*, 548, A100
 Cassano, R., Brunetti, G., Röttgering, H., & Brüggén, M. 2010a, *A&A*, 509, A68
 Cassano, R., Etori, S., Brunetti, G., et al. 2013, *ApJ*, 777, 141

- Cassano, R., Ettori, S., Giacintucci, S., et al. 2010b, *ApJ*, 721, L82
- Clarke, A., Scaife, A., Shimwell, T., et al. 2019, *A&A*, 627, A176
- Clavico, S., De Grandi, S., Ghizzardi, S., et al. 2019, arXiv e-prints, arXiv:1908.02276
- Condon, J., Cotton, W., Greisen, E., et al. 1998, *AJ*, 115, 1693
- Cuciti, V., Cassano, R., Brunetti, G., et al. 2015, *A&A*, 580, A97
- de Gasperin, F., Dijkema, T., Drabent, A., et al. 2019, *A&A*, 622, A5
- Eckert, D., Gaspari, M., Vazza, F., et al. 2017, *ApJ*, 843, L29
- Eckert, D., Ghirardini, V., Ettori, S., et al. 2019, *A&A*, 621, A40
- Ettori, S., Ghirardini, V., Eckert, D., et al. 2019, *A&A*, 621, A39
- Feretti, L., Giovannini, G., Govoni, F., & Murgia, M. 2012, *A&A Rev.*, 20, 54
- Gaspari, M. & Churazov, E. 2013, *A&A*, 559, A78
- Gaspari, M., Churazov, E., Nagai, D., Lau, E., & Zhuravleva, I. 2014, *A&A*, 569, A67
- Ghirardini, V., Eckert, D., Ettori, S., et al. 2019, *A&A*, 621, A41
- Girardi, M., Boschin, W., De Grandi, S., et al. 2019, arXiv e-prints, arXiv:1908.02277
- Govoni, F., Orrù, E., Bonafede, A., et al. 2019, *Science*, 364, 981
- Gregory, S. & Thompson, L. 1984, *ApJ*, 286, 422
- Ha, J.-H., Ryu, D., & Kang, H. 2018, *ApJ*, 857, 26
- Hardcastle, M., Gürkan, G., van Weeren, R., et al. 2016, *MNRAS*, 462, 1910
- Hoang, D., Shimwell, T., van Weeren, R., et al. 2019a, *A&A*, 622, A20
- Hoang, D., Shimwell, T., van Weeren, R., et al. 2018, *MNRAS*, 478, 2218
- Hoang, D., Shimwell, T., van Weeren, R., et al. 2019b, *A&A*, 622, A21
- Intema, H., Jagannathan, P., Mooley, K., & Frail, D. 2017, *A&A*, 598, A78
- Mandal, S., Intema, H., Shimwell, T., et al. 2019, *A&A*, 622, A22
- Miley, G. 1980, *ARA&A*, 18, 165
- Offringa, A., McKinley, B., Hurley-Walker, N., et al. 2014, *MNRAS*, 444, 606
- Rawes, J., Worrall, D., & Birkinshaw, M. 2015, *MNRAS*, 452, 3064
- Robitaille, T. & Bressert, E. 2012, *APLpy: Astronomical Plotting Library in Python*, Astrophysics Source Code Library
- Savini, F., Bonafede, A., Brügger, M., et al. 2019, *A&A*, 622, A24
- Shimwell, T., Luckin, J., Brügger, M., et al. 2016, *MNRAS*, 459, 277
- Shimwell, T., Röttgering, H., Best, P., et al. 2017, *A&A*, 598, A104
- Shimwell, T., Tasse, C., Hardcastle, M., et al. 2019, *A&A*, 622, A1
- Smirnov, O. & Tasse, C. 2015, *MNRAS*, 449, 2668
- Snowden, S., Mushotzky, R., Kuntz, K., & Davis, D. 2008, *A&A*, 478, 615
- Tasse, C. 2014a, arXiv e-prints [arXiv:1410.8706]
- Tasse, C. 2014b, *A&A*, 566, A127
- Tasse, C., Hugo, B., Mirmont, M., et al. 2018, *A&A*, 611, A87
- van Haarlem, M., Wise, M., Gunst, A., et al. 2013, *A&A*, 556, A2
- van Weeren, R., de Gasperin, F., Akamatsu, H., et al. 2019, *Space Sci. Rev.*, 215, 16
- van Weeren, R., Williams, W., Hardcastle, M., et al. 2016, *ApJS*, 223, 2
- Vazza, F., Jones, T., Brügger, M., et al. 2017, *MNRAS*, 464, 210
- Wilber, A., Brügger, M., Bonafede, A., et al. 2019, *A&A*, 622, A25
- Williams, W., van Weeren, R., Röttgering, H., et al. 2016, *MNRAS*, 460, 2385
- Zhuravleva, I., Churazov, E., Schekochihin, A., et al. 2014, *ApJ*, 788, L13