



Universiteit
Leiden
The Netherlands

Molecular complexity on disc scales uncovered by ALMA. Chemical composition of the high-mass protostar AFGL 4176

Bøgelund, E.G.; Barr, A.G.; Taquet, V.; Ligterink, N.F.W.; Persson, M.V.; Hogerheijde, M.R.; Dishoeck, E.F.van

Citation

Bøgelund, E. G., Barr, A. G., Taquet, V., Ligterink, N. F. W., Persson, M. V., Hogerheijde, M. R., & Dishoeck, E. F.van. (2019). Molecular complexity on disc scales uncovered by ALMA. Chemical composition of the high-mass protostar AFGL 4176. *Astronomy And Astrophysics (0004-6361)*, 628, A2. doi:10.1051/0004-6361/201834527

Version: Accepted Manuscript

License: [Leiden University Non-exclusive license](#)

Downloaded from: <https://hdl.handle.net/1887/84723>

Note: To cite this publication please use the final published version (if applicable).

Molecular complexity on disk-scales uncovered by ALMA

The chemical composition of the high-mass protostar AFGL 4176

Eva G. Bøgelund¹, Andrew G. Barr¹, Vianney Taquet^{1,2}, Niels F. W. Ligterink³, Magnus V. Persson⁴, Michiel R. Hogerheijde^{1,5}, and Ewine F. van Dishoeck^{1,6}

¹ Leiden Observatory, Leiden University, PO Box 9513, 2300 RA Leiden, The Netherlands
e-mail: bogelund@strw.leidenuniv.nl

² INAF, Osservatorio Astrofisico di Arcetri, Largo E. Fermi 5, 50125 Firenze, Italy

³ Center for Space and Habitability (CSH), University of Bern, Sidlerstrasse 5, 3012 Bern, Switzerland

⁴ Department of Space, Earth and Environment, Chalmers University of Technology, Onsala Space Observatory, 439 92, Onsala, Sweden

⁵ Anton Pannekoek Institute for Astronomy, University of Amsterdam, Science Park 904, 1098 XH Amsterdam, The Netherlands

⁶ Max-Planck Institut für Extraterrestrische Physik, Giessenbachstr. 1, 85748 Garching, Germany

Submitted 29/10/2018

ABSTRACT

Context. The chemical composition of high-mass protostars reflects the physical evolution associated with different stages of star formation. In addition, the spatial distribution and velocity structure of different molecular species provide valuable information of the physical structure of these embedded objects. Despite an increasing number of interferometric studies, there is still a high demand for high-angular resolution data to study chemical compositions and velocity structures for these objects.

Aims. The molecular inventory of the forming high-mass star AFGL 4176, located at a distance of ~ 3.7 kpc, is studied in detail at high angular resolution of $\sim 0.35''$, equivalent to ~ 1285 au at the distance of AFGL 4176. This high resolution makes it possible to separate the emission associated with the inner hot envelope and disk around the forming star from that of its cool outer envelope. The composition of AFGL 4176 is compared with other, both high- and low-mass sources, and placed in the broader context of star-formation.

Methods. Using the Atacama Large Millimeter/submillimeter Array (ALMA) the chemical inventory of AFGL 4176 is characterised. The high sensitivity of ALMA makes it possible to identify weak and optically thin lines and allows for many isotopologues to be detected, providing a more complete and accurate inventory of the source. For the detected species, excitation temperatures in the range 120 – 320 K are determined and column densities are derived assuming LTE and using optically thin lines. The spatial distribution of a number of species is studied.

Results. A total of 23 different molecular species and their isotopologues are detected in the spectrum towards AFGL 4176. The most abundant species is methanol (CH_3OH) with a column density of $5.5 \times 10^{18} \text{ cm}^{-2}$ in a beam of $\sim 0.3''$, derived from its ^{13}C -isotopologue. The remaining species are present at levels between 0.003 % and 15 % with respect to methanol. Hints that N-bearing species peak slightly closer to the location of the peak continuum emission than the O-bearing species are seen. A single species, propyne ($\text{CH}_3\text{C}_2\text{H}$), displays a double-peaked distribution.

Conclusions. AFGL 4176 comprises a rich chemical inventory including many complex species present on disk-scales. On average, the derived column density ratios with respect to methanol of O-bearing species are higher than those derived for N-bearing species by a factor of three. This may indicate that AFGL 4176 is a relatively young source since nitrogen chemistry generally takes longer to evolve in the gas-phase. Taking methanol as a reference, the composition of AFGL 4176 more closely resembles that of the low-mass protostar IRAS 16293–2422B than that of high-mass star-forming regions located near the Galactic centre. This similarity hints that the chemical composition of complex species is already set in the cold cloud stage and implies that AFGL 4176 is a young source whose chemical composition has not yet been strongly processed by the central protostar.

Key words. Astrochemistry - Methods: observational - Techniques: interferometric - Stars: formation - Stars: massive - Stars: individual objects: AFGL 4176 - Submillimeter: stars

1. Introduction

The molecular composition of a star-forming region can be used to probe the physical conditions of its environment, define its evolutionary stage, identify chemical processes and in addition, sets the stage and starting conditions for chemistry in disks and eventually planetary systems. A large number of molecular species, ranging from simple to complex, that is molecules consisting of six or more atoms, have been identified in various interstellar environments, from giant molecular clouds to dense

cores, protostars and protoplanetary disks (see reviews by Herbst & van Dishoeck 2009; Caselli & Ceccarelli 2012; Tielens 2013; Sakai & Yamamoto 2013). In context to the formation of high- and low-mass stars, the hot core or hot corino stage displays a particular rich chemistry. At this stage, the young protostar heats its surroundings and creates a bubble of warm (~ 200 K) gas, enriched in complex molecules. This complexity is a result of chemistry in the warm gas combined with thermal desorption of the icy mantles of dust grains (e.g. Charnley et al. 1992).

Over the last decades, many surveys, mostly using single-dish telescopes, have been undertaken to investigate the chemical complexity of high-mass hot cores (e.g. Blake et al. 1987; Hatchell et al. 1998; van der Tak et al. 2000; Ikeda et al. 2001; Bisschop et al. 2007; Kalenskii & Johansson 2010; Isokoski et al. 2013; Rivilla et al. 2017; McGuire et al. 2017; Suzuki et al. 2018; McGuire et al. 2018). Much focus has been on the hot cores associated with Orion and Sagittarius B2 (hereafter Sgr B2), famous for their high abundances of complex molecules (see e.g. Neill et al. 2014; Crockett et al. 2014, and references therein), although recently, the low-mass counterparts of these sources have also been under investigations (e.g. Schöier et al. 2002; Cazaux et al. 2003; Bottinelli et al. 2004). A wealth of information on the chemistry associated with hot cores has been provided by these observations, although most are limited by the, in general, large beam sizes of single-dish telescopes. The consequence hereof is that observations do not only sample the hot core, but also the surrounding environments associated with the protostar, such as the large-scale envelope or outflows (e.g. Fayolle et al. 2015). Generally, this results in multi-component molecular emission, where each component may be characterised by a different line width, velocity, excitation temperature and column density. Furthermore, beam dilution effects may result in large uncertainties on derived molecular column densities if not accounted for correctly.

The emergence of interferometers such as the Submillimeter Array (SMA), the Northern Extended Millimeter Array (NOEMA) and, in particular, the Atacama Large Millimeter/submillimeter Array (ALMA), which provide much higher spatial resolutions than single-dish telescopes, has made it possible to study the molecular emission associated with hot cores on much smaller scales than were previously accessible. This means, that for the first time, an opportunity to "look into" the hot cores themselves is provided whereby the challenges of many single-dish studies can be overcome. In addition, the unprecedented sensitivity of ALMA has made possible the detection of a wealth of weak lines ensuring a more accurate characterization of the chemistry associated with the cores.

To date, the chemical inventory of only a handful of sources has been extensively studied with interferometers. These include the low-mass protobinary system IRAS 16293–2422 (hereafter IRAS 16293, Jørgensen et al. 2016) and the high-mass star-forming regions associated with Sgr B2(N) (Belloche et al. 2016) and Orion KL (Brouillet et al. 2013; Pagani et al. 2017; Favre et al. 2017; Tercero et al. 2018; Peng et al. 2019). Therefore, there is a substantial need for the continued investigation of additional hot cores in order to build up a database of the molecular inventories and temperatures characterising these sources. Such a database will provide the statistics needed for new insights into the physical and chemical processes at play during the formation of hot cores and will help the classification of sources according to evolutionary stage.

To this end, the high-mass hot core of AFGL 4176 has been investigated with ALMA and for the first time, a comprehensive study of the chemical inventory of the source is presented. The results of this work are compared with other high- and low-mass sources, in addition to the predictions of hot core chemical models.

1.1. AFGL 4176

AFGL 4176, located in the southern hemisphere at $13^{\text{h}}43^{\text{m}}01.704^{\text{s}}$, $-62^{\circ}08'51.23''$ (ICRS J2000), was first identified by Henning et al. (1984) through its bright infrared

spectrum as a young and massive star embedded in a thick dusty envelope. The source has been further characterised by Beltrán et al. (2006), who used large-scale millimetre continuum observations carried out with the Swedish-ESO Submillimetre Telescope (SEST), to identify a compact core of approximately $1120 M_{\odot}$ with a diameter of 1 pc and luminosity of $2 \times 10^5 L_{\odot}$ (assuming a distance of 5.3 kpc). It should be noted however, that the distance to AFGL 4176 is not well-constrained and cited values range from 3.5 to 5.3 kpc (see, Boley et al. 2012, and references therein), with the most frequently cited distance being 4.2 kpc, based on observations of CH_3OH masers (Green & McClure-Griffiths 2011). However, in this work we will assume a distance of 3.7 kpc, based on the recent second release of *Gaia* data, which places the source at a distance of $3.7_{-1.6}^{+2.6}$ kpc (Bailer-Jones et al. 2018).

In addition to the large-scale envelope, strong evidence that the system contains a Keplerian-like disk is presented by Johnston et al. (2015) who use observations of CH_3CN obtained with ALMA to trace the disk kinematics on scales of ~ 1200 au. A disk-like structure is consistent with the models reported by Boley et al. (2012) who combine interferometric and photometric observations of AFGL 4176 and use radiative transfer and geometric models to characterise the source. Although the observations are generally well described by one-dimensional models, Boley et al. (2012) find substantial deviations from spherical symmetry at scales of tens to hundreds of astronomical units. On these scales, the observations are better described by a multi-component model consisting of a Gaussian halo and an inclined circumstellar disk. Knots of shocked H_2 emission have also been identified around AFGL 4176, potentially indicating an outflow, though no preferred spatial direction was revealed (De Buizer 2003).

A limited number of detections of molecular species have been reported towards AFGL 4176. CO_2 and H_2O have been identified in observations carried out with the *Infrared Space Observatory* (van Dishoeck et al. 1996; van Dishoeck & Helmich 1996; Boonman et al. 2003) and detections of CO , NH_3 and CH_3CN by the Atacama Pathfinder Experiment (APEX) and ALMA have been reported by Johnston et al. (2014, 2015). In addition, a number of CH_3OH masers are reported in the vicinity of the source (Phillips et al. 1998; Green & McClure-Griffiths 2011). However, so far no reports of a more comprehensive chemical inventory of the source exist.

This paper presents an extensive study of the molecular species detected towards AFGL 4176, in addition to those previously reported. The work is based on the same set of high sensitivity, high resolution ALMA observations as analysed by Johnston et al. (2015), but focuses on identifying and characterising all molecular species with transitions in the observed frequency range associated with the source, rather than the disk kinematics. The high sensitivity of ALMA makes it possible to identify weak and optically thin lines while the unique spatial resolving power ensures that the analysed emission stems from the disk around the central forming star rather than the large-scale surrounding envelope.

The structure of the paper is as follows: Sect. 2 introduces the observations, calibration process and methods used for identifying molecular species. Section 3 lists all detected species, our derived molecular column densities and excitation temperatures and discusses the spatial distribution of selected molecules. Section 4 compares the results for AFGL 4176 with observations of other objects and with model predictions. Finally, sect. 5 summarises the results and conclusions.

Table 1: Overview of spectral cubes.

Frequency [GHz]	Beam [" × " (P.A.°)]	rms noise	
		[mJy beam ⁻¹]	[K]
238.838 – 239.306	0'35 × 0'29 (-31.6)	1.9	0.40
239.604 – 241.478	0'34 × 0'30 (-31.2)	1.5	0.31
253.107 – 254.980	0'33 × 0'28 (-30.8)	1.7	0.35
256.115 – 256.583	0'32 × 0'28 (-32.3)	2.2	0.46

Notes. The listed rms noise is determined over the line-free channels. The channel width is 1.2 km s⁻¹.

2. Observations and methods

2.1. Observations

Observations of AFGL 4176 were carried out with ALMA during Cycle 1 (program 2012.1.00469.S, see Johnston et al. 2015, for first results) with 39 antennas in the array, between August 16, 2014 and August 17, 2014 using the Band 6 receivers, covering the frequency range of 211 – 275 GHz. Four spectral windows were obtained covering a total bandwidth of ~4.7 GHz. These consist of two wide windows, of 1875 MHz, centred at 240.5 and 254.0 GHz and two narrow windows, of 468.75 MHz, centred at 239.0 and 256.3 GHz. The spectral resolution of the observations is 976.6 kHz (~1.2 km s⁻¹) and 244 kHz (~0.3 km s⁻¹) for the wide and narrow windows, respectively. The angular resolution is ~0.35", equivalent to ~1285 au at the distance of AFGL 4176.

The data were downloaded from the ALMA archive and reduced via the delivered pipeline script using the Common Astronomy Software Applications (CASA) version 4.2.1. Bandpass and absolute flux calibration was carried out, respectively, using J1617-5848 and Titan, on August 16 and J1427-4206 and Ceres on August 17. The phase and gain calibration was carried out, respectively, using J1308-6707 and J1329-5608 on both days. A conservative flux calibration accuracy of 20% has been adopted. This uncertainty only contributes moderately to the total uncertainty of the presented results. The data were continuum subtracted using the most line-free channels and corrected for primary beam attenuation.

The continuum and line data were imaged separately in CASA version 5.1.1-5 using a pixel size of 0.04", a velocity resolution for the spectral cubes of 1.2 km s⁻¹ and Briggs weighting with a robust parameter of 1.5. The peak continuum emission is 29 mJy beam⁻¹ (5.7 K at 247 GHz) with an rms noise of approximately 0.5 mJy beam⁻¹ (0.1 K at 247 GHz) in a beam of 0'33 × 0'31. The coordinates of the continuum peak were determined by 2D Gaussian fitting in the image plane to be 13^h43^m01.699^s ± 0.003^s, -62°08'51.25" ± 0.02" (IRCS J2000). Table 1 lists the frequencies covered and the rms noise per 1.2 km s⁻¹ channel derived for each of the spectral windows.

For each of the imaged cubes, a spectrum is extracted at the location of the peak continuum emission. Each spectrum represents the average over an area equivalent to the size of the synthesised beam (~0'3). As a consequence, all derived molecular column densities are thus synthesised beam-averaged and probe the warmest, inner regions of the hot core. Figure 1 shows the continuum and the location at which the spectra were extracted. In addition to the main continuum peak, labelled mm1 by Johnston et al. (2015), a secondary peak is observed ~1" north-west of the primary peak; this peak is labelled mm2. A counterpart to this secondary peak is observed to the south-east of mm1 (out-

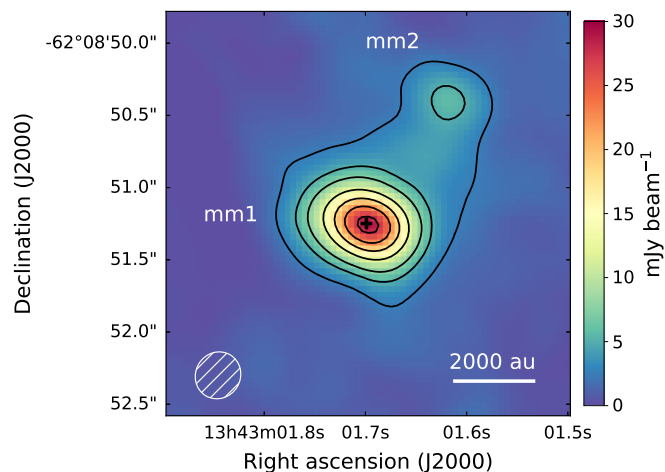


Fig. 1: Continuum image of AFGL 4176 at 1.2 mm. Contours are [5, 10, 15, 25, 35, 45, 55] σ , with $\sigma = 0.5$ mJy beam⁻¹. The peak continuum location at which the spectra have been extracted is marked by the black cross. The synthesised beam (0'33 × 0'31 ~ 1210 × 1140 au) is shown in the bottom left corner.

side the plotted region). These two peaks are located perpendicular to the major axis of mm1 and may indicate a large-scale outflow, consistent with the CO observations presented by Johnston et al. (2015). For this work however, the focus is on the main continuum peak and all subsequent discussion refers to this source only.

2.2. Methods for line identification and modelling

For the identification of spectral lines, catalogued transition frequencies from the JPL (Jet Propulsion Laboratory¹, Pickett et al. 1998) and CDMS (Cologne Database for Molecular Spectroscopy², Müller et al. 2001, 2005; Endres et al. 2016) molecular databases are compared with the extracted spectra. Observed lines are considered detected if the peak signal-to-noise ratio is three or higher. Species with fewer than five detected lines are considered tentative detections. This criterion may be too strict for some of the simpler molecules with sparse, but strong rotational spectra (e.g. SO) and these can likely be considered detections. Using the CASSIS³ line analysis software and assuming local thermodynamic equilibrium (LTE) and optically thin lines, a synthetic spectrum is produced for each identified species. This is done by providing CASSIS with the following parameters: excitation temperature, T_{ex} [K], column density of the species, N_s [cm⁻²], source velocity, v_{LSR} [km s⁻¹], line width at half maximum [km s⁻¹], and angular size of the emitting region (assumed to be equal to the area of the synthesised beam), θ_s ["]. Note that N_s is a synthesised beam-averaged column density, not a source-averaged column density.

For two species, CH₃CN and HC₃N, vibrationally excited transitions are detected (see sect. 3). For vibrationally excited CH₃CN the JPL database is used. This entry utilises a partition function in which vibrational contributions are taken into account. In contrast, the CDMS entries for vibrationally excited HC₃N, and isotopologues thereof, do not include vibrational

¹ <http://spec.jpl.nasa.gov>

² <https://cdms.astro.uni-koeln.de/cdms/portal/>

³ Centre d'Analyse Scientifique de Spectres Instrumentaux et Synthétiques: <http://cassis.irap.omp.eu>

contributions to the partition function but list these separately. Therefore, vibrational correction factors have been applied to all listed values of vibrationally excited HC₃N. These vibrational correction factors are retrieved from the CDMS site⁴. At 225 K, the vibrational correction factor to the partition function of HC₃N and its isotopologues are 1.17 and 1.48, respectively.

Excitation temperatures and column densities are determined for species which have three or more unblended lines detected, that is lines with a signal-to-noise ratio of three or higher, whose emission can mainly be attributed to one molecule, and these span upper state energies of at least 100 K. This is done by creating grids of models varying T_{ex} and N_s and identifying the model with the minimal χ^2 as the best fit. The CASSIS software computes the χ^2 value for each synthetic spectrum in the model grid taking into account the channels within a range of $\pm 10 \text{ km s}^{-1}$ of the catalogue frequency of all unblended lines detected for each species. Table A.1 lists the model grids for each of the fitted species. The uncertainty on T_{ex} and N_s is listed as the standard deviation of models within the 95% confidence level. For most species these are about 20%, though for CH₃CHO and (CH₂OH)₂ the uncertainty on T_{ex} is up to 85%. In both cases, the larger uncertainty on T_{ex} is likely due to the relatively low signal-to-noise (S/N ~ 4) of a number of the unblended lines detected for these species. The uncertainty on column density ratios with respect to methanol is calculated through the propagation of errors. For species where less than three unblended lines are detected, or species where upper state energies of the detected lines do not span more than 100 K, the column density is derived assuming a fixed excitation temperature. In the case of CH₃OH and the isotopologues of SO₂, the excitation temperature is assumed to be 120 K and 150 K, based on the ¹³C-methanol isotopologue and main isotopologue of SO₂, respectively. For all other species, the excitation temperature is assumed to be 200 K. This value is the average of the best-fit excitation temperatures derived for the 12 species listed at the top of Tables 2 and 3. However, since the spread in best-fit excitation temperatures is fairly large, standard deviation of ~ 70 K, column densities are also derived assuming excitation temperatures of 130 K and 270 K. For most species, the column densities derived at these temperatures are within 50% of the value derived assuming $T_{\text{ex}} = 200$ K. For CH₃COCH₃, column densities at 130 K and 270 K are within a factor of three of the value derived assuming $T_{\text{ex}} = 200$ K while for vibrationally excited HC₃N, the column density derived at 130 K is a factor five higher than the value derived at $T_{\text{ex}} = 200$ K.

To ensure that no lines are incorrectly assigned, three checks are conducted. First, that the best-fit model for each species does not predict lines at frequencies, covered by the observations, where no emission is detected. Second, that no other species, for which the spectroscopy is known and listed in either of the databases mentioned above, can reproduce the line without predicting lines at frequencies where no emission is detected. Finally, that isotopically rare species do not predict lines of the main isotopologue where no emission is detected.

The excitation temperatures and column densities for ¹³CH₃OH and CH₃CN are derived first because their lines are very numerous, bright and span a large range of upper state energies. Based on fits to these species, a source velocity of -53.5 km s^{-1} and FWHM line widths of 6 km s^{-1} are found. These values are kept fixed for the subsequent fitting of other species to minimise the number of free parameters. However, it should be noted that different molecules may trace different

gas components and that the fixed source velocity and line width represent the average conditions of the sources. For example, a slight velocity shift is observed for the transitions of SO₂. Leaving the source velocity as a free parameter for this species results in a best-fit value of -52.0 km s^{-1} . The best-fit column density and excitation temperature at this source velocity are within the uncertainty of the values derived assuming the source velocity to be -53.5 km s^{-1} .

Finally, in order to compare the derived molecular column densities across different objects, CH₃OH and H₂ are used as references. Methanol is used as a reference because it is usually one of the most abundant species in hot cores and is thought to be the parent molecule for most complex organics. However, because this species is very abundant, many of its lines are optically thick and therefore its column density cannot be derived directly. The column density of CH₃OH is instead estimated based on the best-fit value for its ¹³C-isotopologue, adopting a ¹²C/¹³C values of 60, derived assuming a galactocentric distance (d_{GC}) of 6.64 kpc and the relation for ¹²C/¹³C reported by Milam et al. (2005). One has to keep in mind that ¹²C/¹³C may still deviate from the galactocentric trend (for example, HC₃N / HCC¹³CN is tentatively found to be ~ 16 for AFGL 4176, see sect. 3.3) and therefore can cause an uncertainty in the CH₃OH column density.

The H₂ column density is determined from the dust continuum according to equation 1:

$$N_{\text{H}_2} = \frac{100 \cdot I_\nu}{\Omega_{\text{beam}} \cdot \mu_{\text{H}_2} \cdot m_{\text{H}} \cdot \kappa_\nu \cdot B_\nu(T)}, \quad (1)$$

where I_ν is the continuum intensity, Ω_{beam} is the solid angle covered by the beam, $\mu_{\text{H}_2} = 2.33$ is the mean molecular mass per H₂ molecule, m_{H} is the mass of the hydrogen atom, κ_ν is the dust opacity, B_ν is the Planck function at $T = 200$ K, and the factor 100 accounts for the gas-to-dust ratio. For our data, $I_\nu = 29 \text{ mJy beam}^{-1}$ and $\kappa_\nu = 1.0 \text{ cm}^2 \text{ g}^{-1}$ (Ossenkopf & Henning 1994). The resulting H₂ column density is found to be $N_{\text{H}_2} = 4 \times 10^{23} \text{ cm}^{-2}$. This equation does not assume the Rayleigh-Jeans limit, but includes the Planck correction.

3. Results

A total of 354 lines are identified towards AFGL 4176 with a signal-to-noise ratio of three or above. Of these, 324 lines can be assigned to a total of 23 different molecular species or their isotopologues. Fifteen species have five or more detected transitions, while eight species have fewer than five detected transitions and are therefore considered tentative detections. For the remaining 30 lines no match to known transitions was found. A list of frequencies and peak intensities for these unidentified lines is given in appendix B. With a total covered bandwidth of ~ 4.7 GHz, the line density is roughly 75 lines per GHz or one line per 13.3 MHz (ALMA Band 6). For comparison, the ALMA-PILS survey towards the low-mass protobinary system IRAS 16293B found one line per 3.4 MHz (ALMA Band 7, Jørgensen et al. 2016). The high line density in AFGL 4176 means that detected lines are often blended with emission from other species. Therefore, as noted above, great caution is exercised when lines are assigned to species.

Table 2 list all identified species, isotopologues and isomers. The Table also summarises the number of identified lines, both unblended and blended, the range of upper state energies and Einstein A coefficients covered by these lines as well as

⁴ <https://cdms.astro.uni-koeln.de/cdms/portal/catalog/379/>

the derived excitation temperature and column density for each species. It should be noted that hyperfine transitions with the same catalogued frequency are counted as a single line since these are indistinguishable in the data. After the identification and modelling of individual species the synthetic spectra are summed to obtain a full model for AFGL 4176. Figure 2 shows the full model for the spectral window centred at 239.1 GHz (see appendix C for full model of other spectral windows).

The derived excitation temperatures range between 120 and 320 K with an average of 200 K, consistent with the range of temperatures derived for CH₃CN by Johnston et al. (2015). The highest column density is $5.5 \times 10^{18} \text{ cm}^{-2}$, derived for CH₃OH (based on ¹³CH₃OH and corrected with the ¹²C/¹³C ratio), while the lowest values is $1.8 \times 10^{14} \text{ cm}^{-2}$, derived for HC₃¹⁵N. While these column densities span more than four orders of magnitude, the majority of species have column densities between 10^{16} and 10^{17} cm^{-2} . The species with the highest number of detected lines, 41 in total, is CH₃OH. These lines also span the largest range of upper state energies ranging from 20 to 950 K. Similarly, the range of upper state energies of the ¹³C-isotopologue of methanol span 60 to 640 K, though only twelve lines associated with this isotopologue are detected. For the remaining species, the number of detected lines range from a single line up to 30 lines in the case of *aGg'*(CH₂OH)₂, though it should be noted that more than half of these are blended with emission from other species. On average the upper state energies of species span a range of 300 K.

The column density calculation above assumes that the dust is optically thin. We can test if this is indeed the case for AFGL 4176, by converting the continuum intensity into a brightness temperature $T_B = 5.7 \text{ K}$. If we compare this to the excitation temperature of the gas ($\sim 200 \text{ K}$), we find that T_B is much less than the physical temperature of the material. Therefore, the optical depth is likely low. We therefore conclude that, averaged over the beam, continuum opacity is negligible. Only if the emitting material is distributed over a region with a size six times smaller than the beam, would dust opacity become a factor. The effect would be that part of the gas is ‘hidden’ by the dust, and real column densities are higher; however, since all lines would be equally affected, the ratios of species are unaffected.

By far the highest column density ratios with respect to methanol are derived for SO₂ and SO with values of 14.7% and 12.7%, respectively. The remaining species have column density ratios with respect to methanol ranging between 0.003% and 3%, with most species showing ratios of the order of 0.1%. On average, the column density ratios derived for O-bearing species are a factor of three higher than those derived for N-bearing species. This trend will be further discussed in sect. 4.

Vibrationally excited transitions are detected for two species, CH₃CN and HC₃N. In both cases, the column density ratio derived from the vibrationally excited transitions are higher than those derived for the ground-state vibrational transitions; 0.8% vs 0.6% for CH₃CN/CH₃OH and 0.5% vs 0.1% for HC₃N/CH₃OH. Note that for the latter species only one and three lines are detected for the ground and vibrationally excited states respectively. That the column densities derived based on the vibrationally excited states are higher than those derived from the ground-state vibrational transitions is most likely not representative of the actual distribution of molecules but rather due to the fact that the vibrationally excited transitions are excited via shocks or infrared pumping and therefore not in LTE. The column densities derived from these transitions can therefore not be trusted.

3.1. Upper limit on the column density of glycolaldehyde

Glycolaldehyde (CH₂(OH)CHO) is of prebiotic interest because of its structural similarities with sugars and the fact that it therefore could be at the basis of the formation of more complex sugar compounds, such as ribose. It was first detected in the interstellar medium towards Sgr B2(N) (Hollis et al. 2000) and subsequently towards various high- and low-mass hot cores (e.g. Beltrán et al. 2009; Jørgensen et al. 2012; Coutens et al. 2015; Taquet et al. 2015; Jørgensen et al. 2016).

A number of transitions of glycolaldehyde are covered by the data although only three of these lines, one of which is blended, are considered detected. These lines have signal-to-noise ratios of approximately four. The remaining lines identified as likely to be due to glycolaldehyde, five in total, are detected with signal-to-noise ratios of between two and three and are therefore not included in the line list in Table 2. Due to the generally low signal-to-noise of the glycolaldehyde lines, we report an upper limit column density for this species. The upper limit is derived based on the two unblended lines and assumes an excitation temperature of 200 K. The column density upper limit is $\leq 1.1 \times 10^{16} \text{ cm}^{-2}$, equivalent to $\leq 0.2\%$ with respect to methanol.

The formation of glycolaldehyde has been investigated both in the laboratory and with chemical models (Bennett & Kaiser 2007; Woods et al. 2012, 2013). Recently, a laboratory study by Chuang et al. (2017) found that the relative abundance of this and other complex species, can be used as a diagnostic tool to derive the processing history of the ice in which the species formed. In particular, the ratio of glycolaldehyde to ethylene glycol provides a good handle on distinguishing ices processed purely by atom-addition (hydrogenation), ices processed purely by UV irradiation or ice processed by both. In the case of AFGL 4176, the ratio of glycolaldehyde to ethylene glycol is ≤ 0.4 . This ratio is consistent with the relative abundance of the species formed in experiments where ice analogues are exposed to both UV irradiation and hydrogenation.

At the same time, observational studies have shown a trend in the glycolaldehyde to ethylene glycol ratio based on source luminosities. Rivilla et al. (2017) found that this ratio decreases with source luminosity, with ratios $\lesssim 0.1$ for high-mass sources with a luminosity similar to AFGL 4176. Of course, the ratio found in AFGL 4176 is an upper limit and the actual ratio can thus either follow this trend or deviate from it. Apart from the parameters listed above, also density can affect the glycolaldehyde to ethylene glycol ratio (Coutens et al. 2018).

3.2. Isotopologues with only blended lines

Three isotopologues of HC₃N and one of CH₃CN are detected towards AFGL 4176, although only through blended lines. For completeness, these isotopologues are included in the full model. Since no column density and excitation temperature can be derived from the blended lines these are adopted from the isotopologues for which unblended lines are detected. That is, for HC¹³CCN the column density derived for HCC¹³CN is adopted, while for vibrationally excited H¹³CCCN and HC¹³CCN the column density derived for vibrationally excited HCC¹³CN is adopted. In the case of CH₃¹³CN, the column density derived for the main isotopologue has been corrected by the ¹²C/¹³C ratio of 60. The isotopologues and the adopted column densities and excitation temperatures are listed in Table 4. It should be noted that no lines of either H¹³CCCN, ¹³CH₃CN or CH₃C¹⁵N, were covered by the data. A couple of transitions of vibrationally ex-

Table 2: Summary of detected lines.

Species	Name	N _{lines}				E _{up} [K]	A _{ij} × 10 ⁻⁵ [s ⁻¹]	Catalogue
		U	B	OT	Total			
¹³ CH ₃ OH	Methanol	7	5	0	12	60 – 644	2.31 – 8.81	CDMS
CH ₃ C ₂ H	Propyne	9	1	0	10	86 – 346	3.85 – 5.83	CDMS
CH ₃ CN	Methyl cyanide (Acetonitrile)	9	0	1	9	80 – 537	73 – 118	JPL
CH ₃ CN, v ₈ =1		14	2	0	16	600 – 955	94 – 111	JPL
CH ₃ CHO	Acetaldehyde	4	4	0	8	93 – 490	3.85 – 56.3	JPL
NH ₂ CHO	Formamide	10	3	0	13	68 – 439	2.48 – 115	CDMS
H ₂ CS		7	1	0	8	46 – 519	5.43 – 20.5	CDMS
CH ₃ OCH ₃	Methyl ether	17	5	0	22	26 – 502	2.40 – 8.72	CDMS
C ₂ H ₅ OH	Ethanol	7	4	0	11	35 – 450	1.93 – 41	CDMS
C ₂ H ₃ CN	Vinylcyanide	8	4	0	12	153 – 388	114 – 136	CDMS
CH ₃ OCHO	Methyl formate	14	5	0	19	101 – 473	0.66 – 24.8	JPL
<i>aGg'</i> (CH ₂ OH) ₂	Ethylene glycol	14	16	0	30	144 – 327	3.76 – 40.9	CDMS
<i>gGg'</i> (CH ₂ OH) ₂		12	8	0	20	62 – 229	2.93 – 14.3	CDMS
SO ₂	Sulphur dioxide	6	0	4	6	36 – 333	2.67 – 13.3	JPL
CH ₃ OH		31	10	15	41	20 – 950	1.56 – 8.80	JPL
H ₂ CCO	Ketene	1	0	0	1	88	15.5	CDMS
HNCO	Isocyanic acid	1	0	0	1	113	19.0	CDMS
NS	Nitrogen sulphide	4	2	0	6	39	0.93 – 28.4	JPL
C ³⁴ S	Carbon sulphide	1	0	0	1	35	28.6	JPL
t-HCOOH	Formic acid	1	1	0	2	70	15.7	CDMS
SO	Sulphur monoxide	1	0	0	1	100	0.43	JPL
³⁴ SO		1	0	0	1	56	20.4	JPL
HC ₃ N, v=0	Cyanoacetylene	1	0	1	1	177	132	CDMS
HC ₃ N, v ₇ =2		1	2	0	3	820 – 823	132 – 133	CDMS
HCC ¹³ CN		1	0	0	1	177	130	CDMS
HCCC ¹⁵ N		1	0	0	1	184	134	CDMS
HCC ¹³ CN, v ₇ =1		2	0	0	2	495 – 496	130 – 131	CDMS
C ₂ H ₅ CN	Ethyl cyanide (Propionitrile)	9	4	0	13	79 – 189	6.22 – 142	CDMS
CH ₃ COCH ₃	Acetone	13	2	0	15	74 – 235	2.43 – 659	JPL
CH ₂ (OH)CHO	Glycolaldehyde	2	1	0	3	111 – 143	12.0 – 27.9	CDMS
O ¹³ CS	Carbonyl sulphide	1	0	0	1	134	4.80	CDMS
³³ SO ₂		10	8	0	18	72 – 471	0.13 – 19.6	JPL
³⁴ SO ₂		1	1	0	2	82 – 182	2.66 – 12.8	JPL
SO ¹⁸ O		1	2	0	3	69 – 89	0.11 – 18.3	JPL

Notes. U = Unblended lines, B = Blended lines, OT = Optically thick lines ($\tau \geq 1$)

cited CH₃¹³CN are within the data range but since these are all weak and highly blended they could not be modelled.

3.3. Isotope ratios

From the three detected isotopologues of HC₃N, it is possible to derive ¹²C/¹³C and ¹⁴N/¹⁵N isotope ratios. These are found to be ~16 and ~34, respectively. At the galactocentric distance of AFGL 4176 ($d_{GC} = 6.64$ kpc), ¹²C/¹³C = 60 and ¹⁴N/¹⁵N = 399 according to Milam et al. (2005) and Colzi et al. (2018), respectively. Therefore both isotope ratios found in AFGL 4176 are significantly lower. However, it should be noted that all three HC₃N isotopologues are tentative detections and more importantly that the detected line belonging to the main HC₃N isotopologue is optically thick; both issues could cause a severe isotope ratio deviation. Furthermore, isotope fractionation could be the result of specific reactions HC₃N is involved in. Clearly, isotope ratios need to be determined from additional molecules (or other lines of HC₃N and its isotopologues) in order to verify or disprove the deviation from the galactocentric trends found in this work.

3.4. Spatial distribution of selected species

Two line maps are produced for each of the species for which five or more unblended lines are detected. The imaged lines are chosen so that both high and low upper state energy transitions are represented, in order to investigate whether these occupy different spatial regions. Also, only lines which are relatively isolated, that is to say whose peak frequency is separated by at least 3 km s⁻¹ from neighbouring peaks, are imaged. This is done in order to minimise line confusion. After suitable lines have been identified for each species, the zero- and first-moment maps, that is the velocity integrated intensity map and intensity-weighted velocity map, respectively, are produced. The spatial extent of each species is determined by fitting a 2D Gaussian to the zero-moment maps (fit parameters are listed in Table D.1). As a representative sample of these maps, the lines of CH₃OH, NH₂CHO and CH₃C₂H are shown in Fig. 3; maps for the remaining species are presented in Appendix D.

There are no large differences between the spatial distribution of O- and N-bearing species. Except for CH₃C₂H, all species have emission peaks near the position of the continuum

Table 3: Summary of derived values of N_s and T_{ex} .

Species	T_{ex} [K]	N_s [cm ⁻²]	X/CH ₃ OH [%]	X/H ₂ × 10 ⁻⁸		
¹³ CH ₃ OH	120 ± 15	(9.2 ± 0.6) × 10 ¹⁶	1.7 ± 0.2	23.0 ± 1.5		
CH ₃ C ₂ H	320 ± 90	(3.8 ± 0.7) × 10 ¹⁶	0.7 ± 0.2	9.5 ± 1.8		
CH ₃ CN	270 ± 40	(3.4 ± 0.3) × 10 ¹⁶	0.62 ± 0.07	8.5 ± 0.8		
CH ₃ CN, $v_8=1$	220 ± 40	(4.3 ± 0.6) × 10 ¹⁶	0.8 ± 0.2	10.8 ± 1.5		
CH ₃ CHO	160 ± 125	(1.5 ± 0.8) × 10 ¹⁶	0.3 ± 0.2	3.8 ± 2.0		
NH ₂ CHO	190 ± 35	(1.0 ± 0.09) × 10 ¹⁶	0.18 ± 0.02	2.5 ± 0.3		
H ₂ CS	160 ± 10	(4.3 ± 0.2) × 10 ¹⁶	0.78 ± 0.07	10.8 ± 0.5		
CH ₃ OCH ₃	160 ± 15	(1.3 ± 0.1) × 10 ¹⁷	2.4 ± 0.3	32.5 ± 2.5		
C ₂ H ₅ OH	120 ± 45	(7.6 ± 1.8) × 10 ¹⁶	1.4 ± 0.4	19.0 ± 4.5		
C ₂ H ₃ CN	240 ± 105	(6.2 ± 1.1) × 10 ¹⁵	0.11 ± 0.02	1.6 ± 0.3		
CH ₃ OCHO	310 ± 75	(1.7 ± 0.3) × 10 ¹⁷	3.1 ± 0.6	42.5 ± 7.5		
<i>aGg'</i> (CH ₂ OH) ₂	160 ± 130	(3.0 ± 0.5) × 10 ¹⁶	0.6 ± 0.1	7.5 ± 1.3		
<i>gGg'</i> (CH ₂ OH) ₂	140 ± 120	(2.6 ± 0.6) × 10 ¹⁶	0.5 ± 0.2	6.5 ± 1.5		
SO ₂	150 ± 30	(8.1 ± 1.9) × 10 ¹⁷	14.7 ± 3.6	203 ± 47.5		
CH ₃ OH	[120]	[(5.5 ± 0.4) × 10 ¹⁸] ^a	≡ 100	1375 ± 100		
³³ SO ₂	[150]	(1.3 ± 0.8) × 10 ^{16b}	0.3 ± 0.2	3.3 ± 2.0		
³⁴ SO ₂	[150]	(8.1 ± 1.8) × 10 ¹⁶	1.5 ± 0.4	20.3 ± 4.5		
SO ¹⁸ O	[150]	(7.6 ± 1.0) × 10 ¹⁵	0.14 ± 0.02	1.9 ± 0.3		
		T_{ex} [K]	T_{ex} [K]			
		[130]	[200]	[270]	[200]	
H ₂ CCO	–	6.4 × 10 ¹⁵	(9.2 ± 1.5) × 10 ¹⁵	1.3 × 10 ¹⁶	0.17 ± 0.03	2.3 ± 0.4
HNCO	–	5.5 × 10 ¹⁶	(6.2 ± 1.3) × 10 ¹⁶	7.8 × 10 ¹⁶	1.2 ± 0.3	15.5 ± 3.3
NS	–	9.2 × 10 ¹⁵	(1.2 ± 0.1) × 10 ¹⁶	1.7 × 10 ¹⁶	0.22 ± 0.02	3.0 ± 0.3
C ³⁴ S	–	7.2 × 10 ¹⁵	(8.1 ± 1.6) × 10 ¹⁵	1.0 × 10 ¹⁶	0.15 ± 0.03	2.1 ± 0.4
t-HCOOH	–	2.6 × 10 ¹⁶	(4.3 ± 0.6) × 10 ¹⁶	5.5 × 10 ¹⁶	0.8 ± 0.2	10.8 ± 1.5
SO	–	6.2 × 10 ¹⁷	(7.0 ± 1.5) × 10 ¹⁷	7.8 × 10 ¹⁷	12.7 ± 2.9	175 ± 37.5
³⁴ SO	–	1.4 × 10 ¹⁶	(1.8 ± 0.5) × 10 ¹⁶	2.1 × 10 ¹⁶	0.4 ± 0.1	4.5 ± 1.3
HC ₃ N, $v=0$	–	1.0 × 10 ¹⁶	(6.2 ± 2.2) × 10 ¹⁵	5.5 × 10 ¹⁵	0.11 ± 0.04	1.6 ± 0.6
HC ₃ N, $v_7=2$	–	1.4 × 10 ^{17c}	(2.5 ± 0.6) × 10 ^{16c}	1.2 × 10 ^{16c}	0.5 ± 0.2	6.3 ± 1.5
HCC ¹³ CN	–	4.3 × 10 ¹⁴	(3.8 ± 0.8) × 10 ¹⁴	4.3 × 10 ¹⁴	0.007 ± 0.002	0.10 ± 0.02
HCCC ¹⁵ N	–	2.1 × 10 ¹⁴	(1.8 ± 0.4) × 10 ¹⁴	1.8 × 10 ¹⁴	0.003 ± 0.001	0.05 ± 0.01
HCC ¹³ CN, $v_7=1$	–	1.9 × 10 ^{15d}	(8.1 ± 1.2) × 10 ^{14d}	5.5 × 10 ^{14d}	0.010 ± 0.002	0.21 ± 0.03
C ₂ H ₅ CN	–	5.6 × 10 ^{15b}	(6.4 ± 0.8) × 10 ^{15b}	8.1 × 10 ^{15b}	0.12 ± 0.02	1.6 ± 0.2
CH ₃ OCH ₃	–	2.3 × 10 ^{16b}	(5.3 ± 0.5) × 10 ^{16b}	1.4 × 10 ^{17b}	1.0 ± 0.2	13.3 ± 1.3
CH ₂ (OH)CHO	–	≤ 8.4 × 10 ^{15e}	≤ 1.1 × 10 ^{16e}	≤ 1.5 × 10 ^{16e}	≤ 0.2	≤ 2.8
O ¹³ CS	–	4.8 × 10 ¹⁵	(5.5 ± 0.7) × 10 ¹⁵	6.2 × 10 ¹⁵	0.10 ± 0.01	1.4 ± 0.2

Notes. Values in square brackets are fixed. N_s is the synthesised beam-averaged column density. ^(a) Based on ¹³CH₃OH, assuming a ¹²C/¹³C ratio of 60. ^(b) Column density derived assuming fixed T_{ex} due to insufficient range of E_{up} of unblended lines. ^(c) Includes the vibrational correction factor of 1.17. ^(d) Includes the vibrational correction factor of 1.48. ^(e) Upper limit due to low signal-to-noise.

Table 4: Summary of isotopologues with only blended lines.

Species	N_{lines}			E_{up} [K]	A_{ij} × 10 ⁻⁵ [s ⁻¹]	Catalogue	N_s [cm ⁻²]	T_{ex} [K]
	Unblended	Blended	Total					
CH ¹³ CN	0	6	6	80 – 259	100 – 118	JPL	[5.7 × 10 ¹⁴] ^a	[270]
HC ¹³ CCN	0	1	1	177	130	CDMS	[3.8 × 10 ¹⁴]	[200]
H ¹³ CCCN, $v_7=1$	0	2	2	479 – 503	108 – 133	CDMS	[8.1 × 10 ¹⁴]	[200]
HC ¹³ CCN, $v_7=1$	0	2	2	493	130 – 131	CDMS	[8.1 × 10 ¹⁴]	[200]

Notes. Values in square brackets are fixed. ^(a) Based on CH₃CN, assuming a ¹²C/¹³C ratio of 60.

peak. The N-bearing species (CH₃CN, C₂H₃CN and C₂H₅CN) peak very close to the continuum peak, while some O-bearing species (e.g. CH₃OH and CH₃OCH₃) peak up to 0''2 away from the continuum peak. Although this scale is of the same order as the size of the synthesised beam, the signal-to-noise of these

maps (30 – 90) is large enough to make these spatial differences significant.

Noticeable differences in spatial distributions exist between transitions of the same species with low and high upper state energies. These differences are illustrated in Fig. 4 where the ratio between the spatial extent (as measured by the fitted FWHM)

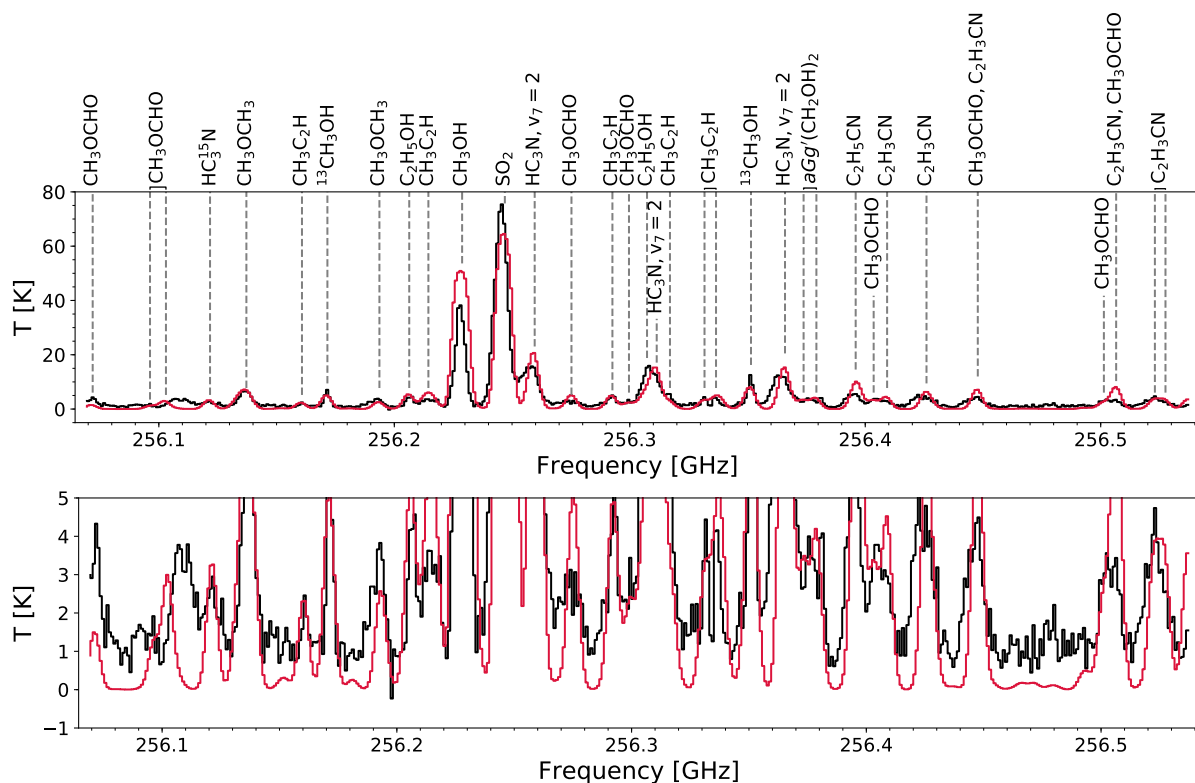


Fig. 2: *Top panel*: Full model (red), i.e., the sum of synthetic spectra, for all species detected towards AFGL 4176 in the spectral window centred at 256.3 GHz. Frequencies are shifted to the systemic velocity of the region. The data are shown in black. *Bottom panel*: Zoom-in of top panel to highlight weak lines.

of the low and high upper state energy transitions are plotted. In this figure, a ratio above 1 indicates that the spatial extent of the low E_{up} transition is larger than that of the high E_{up} transition, while a ratio below 1 indicates that the spatial extent of the high E_{up} transition is larger than that of the low E_{up} transition. For the majority of the imaged species, the spatial extent of the low upper state energy transition is larger than that of the high upper state transition. This trend is especially clear in the case of the S-bearing species H_2CS and SO_2 , the O-bearing species CH_3OCHO and the N-bearing species CH_3CN . For these species, the spatial extent of the low upper state energy transition is $\sim 30\%$ larger than that of the high E_{up} transition. The larger spatial extent of the low E_{up} transitions indicates that these species are present in colder gas. This is consistent with the relatively low excitation temperatures derived for SO_2 and H_2CS of 150 K and 160 K, respectively, but contradicts the high excitation temperatures derived for CH_3CN and CH_3OCHO of 270 K and 310 K, respectively. For C_2H_3CN and C_2H_5CN the trend is reversed, with the spatial extent of low E_{up} transitions smaller than that of high E_{up} transitions by up to 40% (as measured by the fitted FWHM). The large differences between the spatial extent of low and high E_{up} transitions seen in the case of H_2CS , SO_2 , CH_3OCHO and CH_3CN indicate that these species trace both the warm central region and the cooler outer region of the hot core, while the majority of the remaining complex organic molecules (e.g. CH_3OH , CH_3OCH_3 , C_2H_5OH , CH_3COCH_3 and NH_2CHO) are likely only excited in the central parts of the core since these species show only limited differences between the low and high E_{up} transitions. Finally, as noted above, CH_3C_2H is the only species whose emission is not concentrated at the loca-

tion of the continuum peak emission. Instead this species shows two peaks, of approximately similar intensity, with one roughly coinciding with that of the continuum and a second at the location of the secondary continuum peak, mm2. The spatially more diffuse emission of this species is consistent with trends observed towards other hot cores (see e.g. Fayolle et al. 2015). This indicates that a cold gas-phase formation mechanism likely dominates the formation of CH_3C_2H .

For a number of species a velocity gradient is detected across the source. The gradient is most pronounced in the case of NH_2CHO but also visible in the high upper state energy lines of CH_3CN , CH_3OCHO , C_2H_3CN and C_2H_5CN . The presence of a velocity gradient across the sources is consistent with the result of Johnston et al. (2015) who model the emission of CH_3CN and find this to be consistent with a Keplerian-like disk. A few species, namely CH_3OH , C_2H_5OH , CH_3OCH_3 and H_2CS , seem to have a velocity gradient that differs from CH_3CN .

4. Discussion

Table 5 presents an overview of all detected O-, N- and S-bearing species (isotopologues not included) towards AFGL 4176. These detected species are common in regions of star-formation (see review by Herbst & van Dishoeck 2009, and references therein).

On average, the column density ratios with respect to methanol derived for the O-bearing species are a factor of three higher than the ratios derived for the N-bearing species. Also, the excitation temperatures derived for the O-bearing species are generally low, 120 – 160 K, while the excitation temperatures derived for the N-bearing species are generally high, 190 –

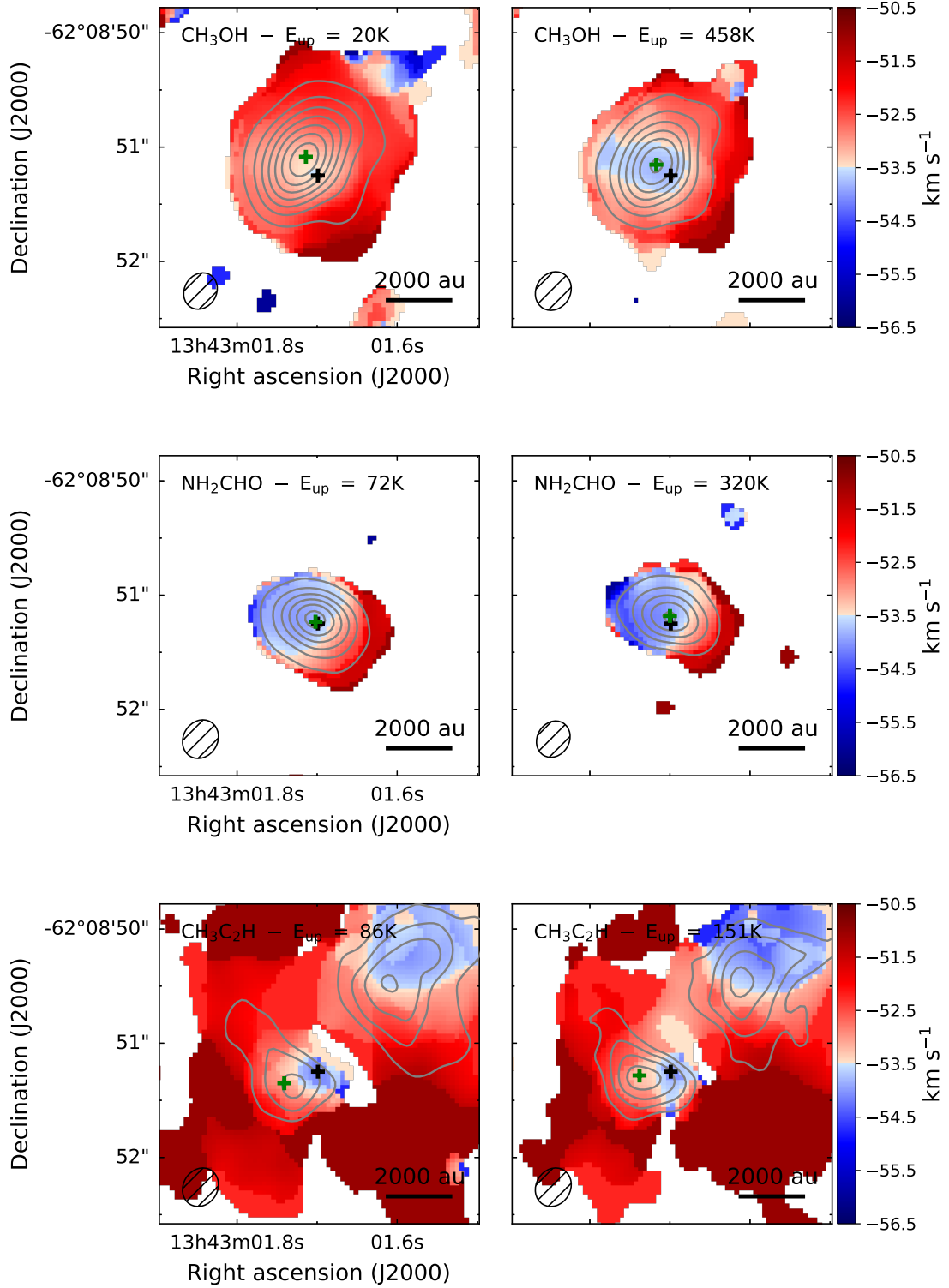


Fig. 3: *Top panels:* First-moment (intensity-weighted velocity) map of CH_3OH lines at 254.0153 GHz (left) and 241.2679 GHz (right). Pixels with signal-to-noise ratios of less than three are masked out. The zero-moment (integrated intensity) map for each line is overlaid in grey contours. Contours start at 9σ and are in steps of 12σ , with $\sigma = 1.34 \times 10^{-2}$ and 7.16×10^{-3} Jy beam $^{-1}$ km s $^{-1}$, for the left and right panel, respectively. The black and green crosses mark the locations of the peak continuum emission and peak integrated line intensity, respectively. *Middle panels:* Same as top panels but for NH_2CHO lines at 239.952 GHz (left) and 254.727 GHz (right). Contours start at 9σ and are in steps of 12σ , with $\sigma = 6.17 \times 10^{-3}$ and 6.25×10^{-3} Jy beam $^{-1}$ km s $^{-1}$, for the left and right panel, respectively. *Bottom panels:* Same as top panels but for $\text{CH}_3\text{C}_2\text{H}$ lines at 239.2523 GHz (left) and 239.2112 GHz (right). Contours start at 6σ and are in steps of 3σ , with $\sigma = 7.29 \times 10^{-3}$ and 6.35×10^{-3} Jy beam $^{-1}$ km s $^{-1}$, for the left and right panel, respectively.

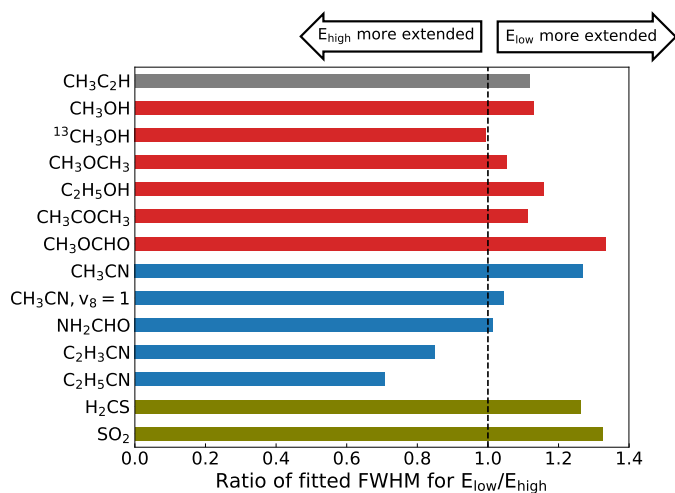


Fig. 4: Ratio between the fitted FWHM of the low and high upper state energy transitions listed in Table D.1. A ratio larger than 1 indicates that the spatial extent of the low upper state energy transition is larger than that of the high upper state energy transition.

240 K. This differentiation of species with excitation temperature is similar to trends observed in the Orion molecular cloud (Blake et al. 1987; Crockett et al. 2015) and in the high-mass star-forming complex G19.62-0.23 (Qin et al. 2010). Similar trends are also reported by Suzuki et al. (2018) who carry out a survey of N- and O-bearing species towards eight high-mass star forming regions, including Orion KL and G19.62-0.23, using the 45m radio telescope at the Nobeyama Radio Observatory. When comparing these observations with chemical models, Suzuki et al. (2018) conclude that the correlations between fractional abundances of different groups of species can be explained by a combination of different temperature structures inside the cores and different evolutionary phases of the studied regions. As examples of a younger, less evolved source and an older, more evolved source, Suzuki et al. (2018) discuss NGC 6334F (also known as NGC 6334I) and G10.47+0.03, respectively. While G10.47+0.03 displays a relatively high fractional abundance of N-bearing species, $\sim 2\text{--}10\%$ with respect to methanol, the fractional abundances of the same species detected towards NGC 6334F are only $\sim 0.1\%$. By assuming a more dominant high-temperature region (~ 200 K) and later evolutionary stage for G10.47+0.03 with respect to NGC 6334F, Suzuki et al. (2018) reproduce the observed trends. The trend of younger regions being characterised by lower abundances of N-bearing species with respect to O-bearing species may be a consequence of gas-phase nitrogen chemistry taking longer to initiate compared with the chemistry of O-bearing species (Charnley et al. 1992).

The studies discussed above are primarily based on single-dish observations and therefore, mostly, spatially unresolved. Whereas single-dish telescopes often cover both the inner hot envelope around the centrally forming star and the emission of its cooler outer envelope, interferometric observations are able to filter out the extended emission and focus solely on the hot core. Also, since single-dish telescopes are generally less sensitive when compared with interferometric observations and especially ALMA, it may not be possible to identify enough optically thin lines from which excitation conditions can be derived. The generally larger beam sizes of single-dish telescopes may also

Table 5: Overview of oxygen-, nitrogen and sulphur-bearing species detected towards AFGL 4176.

O-bearing	N-bearing	S-bearing
CH_3OH	CH_3CN	H_2CS
CH_3CHO	C_2H_3CN	O, N-bearing
C_2H_5OH	C_2H_5CN	NH_2CHO
CH_3OCH_3	HC_3N	$HNCO$
CH_3COCH_3	Hydrocarbons	O, S-bearing
CH_3OCHO	CH_3C_2H	SO_2
$(CH_2OH)_2$		SO
H_2CCO		N, S-bearing
$t\text{-HCOOH}$		NS

Notes. Not including isotopologues. Species in red have fewer than five detected transitions and are considered tentative.

result in underestimated column densities of molecular species if effects of beam dilution are not accounted for correctly.

In the following, we compare our ALMA results for AFGL 4176 with a selection of ALMA studies, that suffer less from sensitivity and resolution limitations, but do cover sources located at a range of different distances, therefore sampling different spatial scales, ranging from ~ 70 to ~ 13300 au. These studies focus on Sgr B2(N), Orion KL and the low-mass protostellar binary IRAS 16293. We conclude the section with a comparison to chemical models. Table 6 and Fig. 5 summarises the comparisons.

4.1. Comparison with the high-mass star-forming regions in Sgr B2(N) and Orion KL

Sgr B2(N): Located in the Galactic central region, the Sgr B2 molecular cloud hosts some of the most active sites of high-mass star-formation in the galaxy. One of these sites, Sgr B2 (N), is the subject of the ALMA line survey EMOCA (Exploring Molecular Complexity with ALMA, Belloche et al. 2016) aimed at characterising the molecular content of the region. Due to the high spatial resolution of the observations, $\sim 1.6''$, probing scales down to 0.06 pc (~ 13300 au assuming a distance of 8.34 kpc), Bonfand et al. (2017) were able to identify three new hot cores towards Sgr B2, labelled N3, N4 and N5, in addition to the previously identified cores N1 and N2. Bonfand et al. (2017) find that the chemical composition of these new cores are very similar to each other and very different from that of the N2 core. Derived C_2H_3CN / C_2H_5CN and CH_3CN / C_2H_5CN ratios suggest that the N2 core is chemically less evolved than the three new cores.

For the hot cores in Sgr B2, the column density ratio with respect to methanol of N-bearing species (CH_3CN , NH_2CHO , C_2H_3CN and C_2H_5CN) are higher than those derived towards AFGL 4176 by up to two orders of magnitude. For the O-bearing species (C_2H_5OH and CH_3OCHO), the variations are smaller, though still up to an order of magnitude higher in Sgr B2 compared with AFGL 4176

In addition to the main isotopologues, a number of ^{13}C - and ^{15}N -isotopologues, as well as deuterated and vibrationally excited species, have been detected towards Sgr B2(N2) (Belloche et al. 2016). No deuterated species are detected towards AFGL 4176, despite a number of strong transitions belonging to deuterated molecules, primarily DC_3N and deuterated

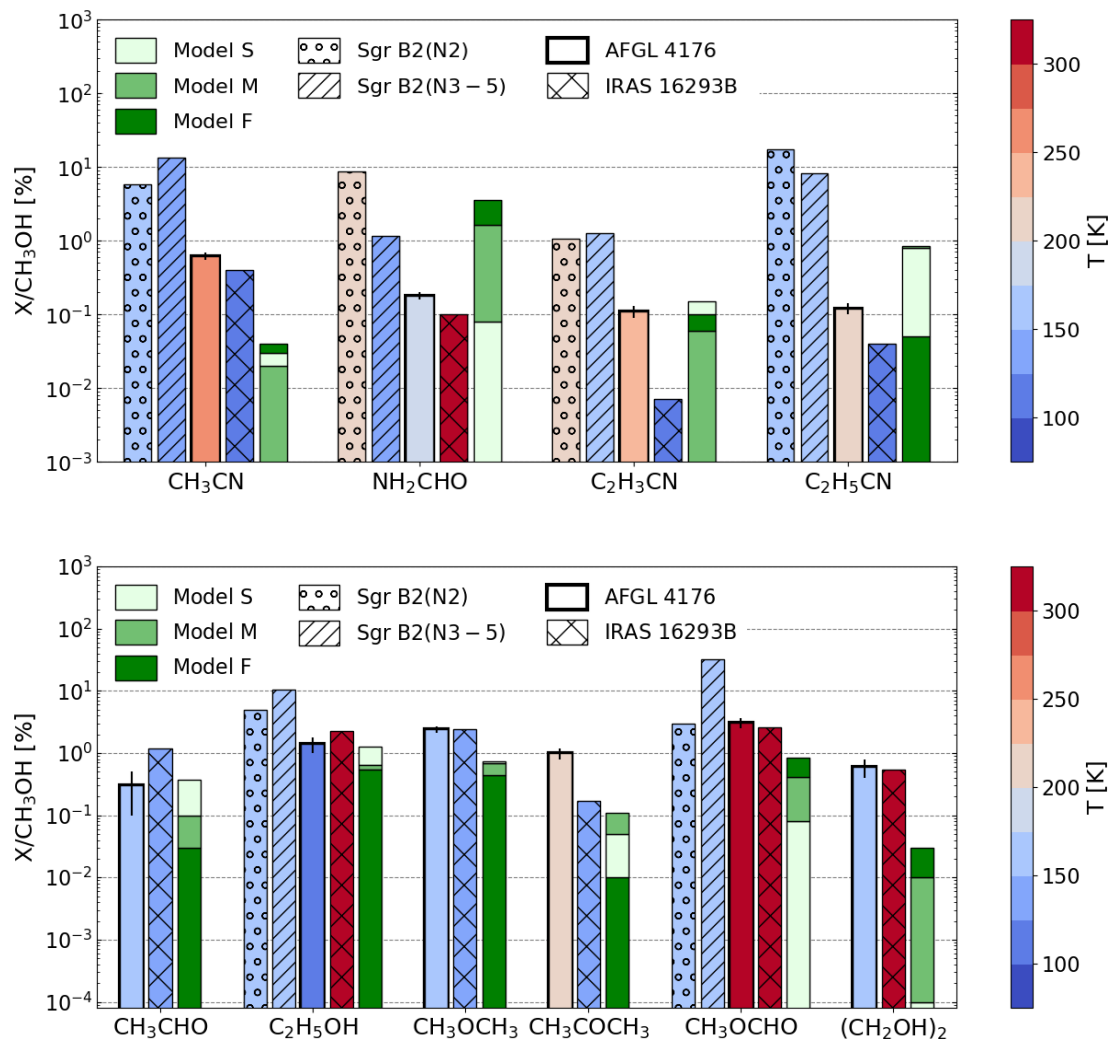


Fig. 5: *Top panel:* Relative abundances of N-bearing species predicted by models and detected towards AFGL 4176, Sgr B2(N) and IRAS 16293B. For AFGL 4176, Sgr B2(N) and IRAS 16293B the colours of bars indicate the excitation temperature derived for each species. *Bottom panel:* Same as top panel but for O-bearing species.

NH_2CHO , being covered by the spectra. A number of lines of ^{13}C -cyanoacetylene are detected in addition to $^{13}\text{CH}_3\text{OH}$ and some blended lines of $\text{CH}_3^{13}\text{CN}$. ^{13}C doubly substituted cyanoacetylene isotopologues are also detected towards Sgr B2(N2). Towards AFGL 4176, two transitions of ^{13}C doubly substituted cyanoacetylene are covered but both are weak and highly blended. The tentative detection of HC_3^{15}N towards Sgr B2(N2) results in a ratio with respect to methanol identical to the value derived for AFGL 4176. It should be noted however, that only a very limited number of lines of these isotopologues are detected and therefore their detection is considered tentative and their ratios should be seen as indicative of trends rather than definite values.

Orion KL: Due to its proximity, ~ 414 pc from the Sun (Menten et al. 2007), the high-mass star-forming regions associated with the Orion molecular clouds are some of the most studied. Using ALMA observations, the morphology and molecular composition of the region was recently studied by Pagani et al. (2017) who, thanks to the high angular resolution of their data of $1.7''$, probing scales of ~ 700 au, were able to separate the region into a number of components, including the hot core, plateau

and extended ridge, but also a variety of molecular clumps, and report a complex velocity structure. However, due to the lack of zero-spacing data to recover the extended emission of many species, Pagani et al. (2017) do not derive column densities or excitation temperatures for the detected species and limit their analysis to line identification and determination of line velocity and line widths. Orion KL may therefore be qualitatively compared with AFGL 4176 though no quantitative comparison is possible.

With the exception of $\text{CH}_3\text{C}_2\text{H}$ and NS, all species detected towards AFGL 4176 are also detected towards Orion KL by Pagani et al. (2017), including vibrationally excited HC_3N (also investigated by Peng et al. 2017) and its ^{13}C singly substituted isotopologues. The highest energy vibrationally excited state is the $v_6 = v_7 = 1$ state, detected towards the Orion KL hot core region. In contrast, only the first two vibration states (HC_3N , $v_7=2$ and H^{13}CCCN , $v_7=1$, HC^{13}CCN , $v_7=1$ and HCC^{13}CN , $v_7=1$) were tentatively detected towards AFGL 4176.

Tercero et al. (2018) also investigate the inventory of complex molecules towards Orion KL, this time focussing on O-bearing species. With a resolution of $\sim 1.5''$, they probe spatial

scales of ~ 620 au. Tercero et al. (2018) derive molecular abundances at three locations. These are selected based on where each of the species methylformate, ethylene glycol and ethanol peak. When comparing the relative abundances with respect to CH_3OH for $\text{C}_2\text{H}_5\text{OH}$, CH_3OCH_3 , CH_3COCH_3 , CH_3OCHO , and $(\text{CH}_2\text{OH})_2$, we find that the relative abundances of CH_3OCH_3 and CH_3OCHO are consistently lower in AFGL 4176 (1.4 – 3.9 and 1.5 – 7.2 times lower, respectively) than in Orion KL. However, the relative abundances of CH_3COCH_3 and $(\text{CH}_2\text{OH})_2$ are consistently higher in AFGL 4176 compared with Orion KL (6.7 – 20 and 1.2 – 6 times higher, respectively), while $\text{C}_2\text{H}_5\text{OH}$ has a roughly equal relative abundance in the two sources. What causes the enhancement of certain species remains unclear.

As for AFGL 4176, both conformers of ethylene glycol are detected towards Orion KL (Favre et al. 2017). This is interesting since previously only the more stable of the two, $aGg'(\text{CH}_2\text{OH})_2$, was detected towards high-mass star-forming regions (see e.g. Lykke et al. 2015; Brouillet et al. 2015; Rivilla et al. 2017, and references therein), while the $gGg'(\text{CH}_2\text{OH})_2$ conformer was only detected towards the low-mass system IRAS 16293 (Jørgensen et al. 2016). The ratio between the aGg' and gGg' ethylene glycol conformers is 1.2 in AFGL 4176, within the errors of the value of 1.1 derived for IRAS 16293, and half the values of 2.3 and 2.5 derived for the 5 and 8 km s^{-1} components of Orion KL respectively (Favre et al. 2017).

4.2. Comparison with the low-mass protobinary IRAS 16293–2422

The low-mass protobinary system IRAS 16293, located at a distance of 141 pc (Dzib et al. 2018), was observed in the ALMA Protostellar Interferometric Line Survey (PILS, see Jørgensen et al. 2016, for overview and first results). The survey covers a total of 33.7 GHz between 329 and 363 GHz with spectral and angular resolutions of 0.2 km s^{-1} and $0''.5$ (~ 70 au) respectively. The IRAS 16293 system is composed of two main components, IRAS 16293A and IRAS 16293B, with the narrow lines associated with the B source, $\sim 1 \text{ km s}^{-1}$, making it ideal for line identification.

Of the species for which five or more lines are detected towards AFGL 4176, all have also been identified towards IRAS 16293, although $\text{CH}_3\text{C}_2\text{H}$ and NS are not reported in the PILS survey (van Dishoeck et al. 1995; Caux et al. 2011; Coutens et al. 2016; Jørgensen et al. 2016; Lykke et al. 2017; Calcutt et al. 2018; Drozdovskaya et al. 2018; Jørgensen et al. 2018). In addition, eight species with fewer than five transitions detected towards AFGL 4176 (CS and OCS only via their isotopologues) are also common between the sources. Figure 6 presents an overview of the relative abundances of all species detected towards AFGL 4176 and IRAS 16293B.

Overall, the composition of AFGL 4176 is more similar to that of IRAS 16293B than to the high-mass star-forming regions in the Galactic centre. Specifically, the relative column densities derived for the O-bearing species $\text{C}_2\text{H}_5\text{OH}$, CH_3OCH_3 , CH_3OCHO and $(\text{CH}_2\text{OH})_2$ towards IRAS 16293B are within a factor of two of the values derived for AFGL 4176. The remaining species show slightly larger variations with the ratio of CH_3CHO to CH_3OH being a factor of four higher in IRAS 16293B compared with AFGL 4176, and the ratio of CH_3COCH_3 to CH_3OH a factor of six lower. For N-bearing species, similar abundances are derived for CH_3CN and NH_2CHO , with variations within a factor of two between the sources. In contrast, lower ratios of both $\text{C}_2\text{H}_3\text{CN}$ and $\text{C}_2\text{H}_5\text{CN}$, are reported towards IRAS 16293B compared to AFGL 4176,

1: H_2CCO	7: CH_3OCHO	20: CH_3CN	30: H_2CS
2: CH_3CHO	8: $\text{CH}_2(\text{OH})\text{CHO}$	21: HNCO	31: C^{34}S
3: $t\text{-HCOOH}$	9: $(\text{CH}_2\text{OH})_2$	22: NH_2CHO	32: SO
4: CH_3OCH_3		23: HC_3N	33: O^{13}CS
5: $\text{C}_2\text{H}_5\text{OH}$		24: $\text{C}_2\text{H}_3\text{CN}$	34: SO_2
6: CH_3COCH_3		25: $\text{C}_2\text{H}_5\text{CN}$	

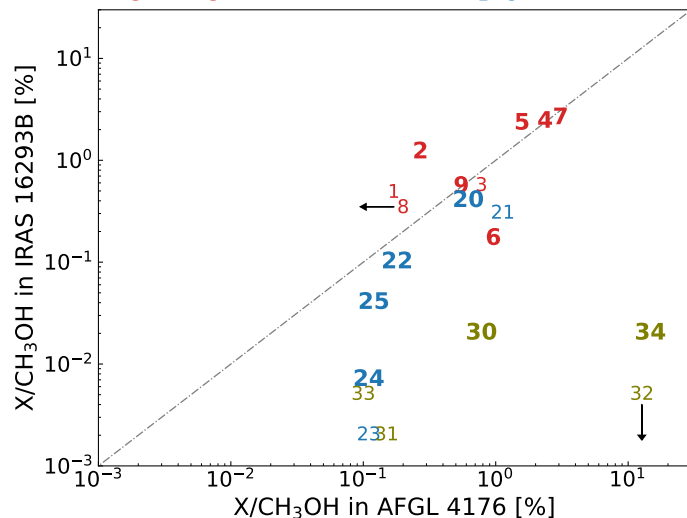


Fig. 6: Relative abundances of species detected towards AFGL 4176 and IRAS 16293. Labels in bold refer to species with five or more detected transitions towards AFGL 4176. Oxygen-bearing species are labelled by numbers 1 through 9 in red, N-bearing species are labelled by numbers 20 through 25 in blue and S-bearing species are labelled by numbers 30 through 34 in yellow. Black arrows indicate upper limits on the relative abundance of $\text{CH}_2(\text{OH})\text{CHO}$ in AFGL 4176 and of SO in IRAS 16293B. The dashed grey line indicates the 1:1 ratio of relative abundances in AFGL 4176 and IRAS 16293B.

by factors of 16 and three, respectively. By far the largest variations between the sources are seen in the ratios of the S-bearing species with SO_2 being close to three orders of magnitude higher in AFGL 4176 compared to IRAS 16293B, and H_2CS higher by a factor 39. However, Drozdovskaya et al. (2018) note that the SO_2 emission detected towards IRAS 16293 is likely not homogeneously distributed within the $0''.5$ PILS beam, which also misses a large extended component, and therefore the large difference between the sources could in part be explained by local variations in the distribution of the species towards IRAS 16293.

4.3. Comparison with chemical models

The chemistry of hot cores is commonly divided into three main phases: 1) a cold collapse phase dominated by reactions on grain surfaces involving the diffusion of light species (i.e. H); 2) a warm-up phase where relatively complex species can be formed in the ice and subsequently released into the gas phase; 3) a hot core phase dominated by gas-phase reactions triggered by the evaporation of the icy content. The models presented by Garrod (2013) couple all of these phases to trace the gas-phase, grain-surface and bulk ice chemistry throughout the evolution of the core. The physical model adopted by Garrod (2013) consists of a collapse phase followed by a gradual warm-up of the gas and dust. Three warm-up timescales are adopted: a 'fast' scale with warm-up to 200 K in 5×10^4 yr, a 'medium' scale reaching 200 K in 2×10^5 yr and a 'slow' scale taking 1×10^6 yr to reach 200 K.

Listed in Table 6 are the predicted peak gas-phase abundance ratios for each of these models.

In the models presented by Garrod (2013), the formation of the complex O-bearing species detected in this study (i.e. CH_3CHO , $\text{C}_2\text{H}_5\text{OH}$, CH_3OCH_3 , CH_3COCH_3 , CH_3OCHO and $(\text{CH}_2\text{OH})_2$) is closely related to CH_3OH . Within the framework of the models, O-bearing species are formed primarily in warm (i.e. $30\text{ K} < T < 80\text{ K}$) ices from the recombination of radicals formed through the UV-photodissociation of CH_3OH along with other simple solid species such as H_2CO and H_2O (see also Garrod & Herbst 2006; Garrod et al. 2008). Here, the UV field is internally generated by cosmic ray collisions with H_2 . While the models match the abundances of CH_3CHO , $\text{C}_2\text{H}_5\text{OH}$ and CH_3OCH_3 in AFGL 4176 within a factor of three, the abundances of CH_3COCH_3 and $(\text{CH}_2\text{OH})_2$ are underpredicted by at least an order of magnitude. For CH_3OCHO , the most abundant O-bearing species after CH_3OH , with abundances of $\sim 2\text{--}3\%$ in both AFGL 4176 and IRAS 16293B, the models predict values which are lower than the observed ones by a factor of four in the case of the fast model and a factor of 39 in the case of the slow model. A possible explanation for the mismatch between models and derived abundances of this species is poorly understood ice chemistry as well as missing gas-phase routes or included gas-phase routes which are more efficient than presumed. Indeed, a number of studies suggest that gas-phase chemistry could provide an important contribution to the formation of the molecule, either through ion-neutral or neutral-neutral reactions, following the sublimation of precursors from the ice (see e.g. Neill et al. 2011; Cole et al. 2012; Vasyunin & Herbst 2013; Balucani et al. 2015; Taquet et al. 2016). A significant contribution from gas-phase reactions to the formation of CH_3COCH_3 , as suggested by Charnley (2001), is also possible.

The abundances of complex N-bearing species detected in this study (i.e. CH_3CN , NH_2CHO , $\text{C}_2\text{H}_3\text{CN}$ and $\text{C}_2\text{H}_5\text{CN}$) are likely the result of a combination of grain-surface and gas-phase reactions. For instance, CH_3CN can be formed on ices from the radical recombination of CH_3 and CN but also in the gas-phase via ion reactions between HCN and CH_3^+ , followed by recombination with an electron or a proton transfer reaction. In the models by Garrod (2013), CH_3CN is formed primarily in ices via $\text{CH}_3 + \text{CN} \rightarrow \text{CH}_3\text{CN}$, though a formation channel via hydrogenation of C_2N on grains at early times is also included. $\text{C}_2\text{H}_3\text{CN}$ and $\text{C}_2\text{H}_5\text{CN}$ are formed mainly during the warm-up stage as a result of a series of both gas-phase and grain-surface reactions including the formation, recombination and hydrogenation of the CN radical as well as C_2H_2 , C_2H_4 and HC_3N (Garrod et al. 2017). The formation of NH_2CHO is likely ice-dominated and proceeds via radical recombination reactions between NH_2 and HCO (e.g. Jones et al. 2011; Fedoseev et al. 2016). Alternatively, hydrogenation of HNCO may also lead to NH_2CHO . This idea is based on the strong correlation between the abundances of HNCO and NH_2CHO reported by Bisschop et al. (2007) and López-Sepulcre et al. (2015) for samples of pre-stellar and protostellar objects, indicating a connection between these species. However, such a connection contradicts the results of experimental works which show that solid-state HNCO hydrogenation does not produce NH_2CHO (Noble et al. 2015). A similar conclusion is reached by Ligterink et al. (2018) who find that HNCO is likely not at the basis of the formation of NH_2CHO but rather formed simultaneously. Finally, a gas-phase formation route for NH_2CHO via reactions between NH_2 and H_2CO , has also been proposed (Barone et al. 2015; Codella et al. 2017). Chemical models by Quénard et al. (2018) show that both solid-state and gas-phase reactions are important for the formation of

NH_2CHO and they claim its correlation with HNCO is the result of chemical reactions leading to both species responding in very similar ways to physical parameters, such as temperature.

For the detected N-bearing species, only the abundance ratio of $\text{C}_2\text{H}_3\text{CN}$ is well-matched by the models. In contrast, the abundance ratios predicted by the models for CH_3CN , NH_2CHO and $\text{C}_2\text{H}_5\text{CN}$ are all about an order of magnitude off with respect to the values derived for AFGL 4176. The abundances in AFGL 4176 do not favour either of the fast, medium or slow models over the other.

In summary, the presence of most of the detected complex molecules could be explained by warm ice chemistry triggered by cosmic-ray UV photons. However, for some species, O- as well as N-bearing, formation routes via gas-phase reactions cannot be neglected. The chemical similarity between IRAS 16293B and AFGL 4176 hints that the chemical composition of complex species may already be set in the cold cloud stage. In this context, the lack of chemical differences between the two sources, despite the large difference in luminosity, implies that AFGL 4176 is a very young source where little processing of the chemical inventory by the protostar has occurred.

5. Summary

This paper presents a comprehensive study of the chemical inventory of the high-mass protostar AFGL 4176. Due to the exceptional resolving power offered by ALMA, the source is analysed on disk scales, making it possible to probe only the emission coming from the inner hot core region around the forming star while avoiding that of its large-scale cooler envelope. The source displays a rich chemistry consisting of 23 different molecular species, of which more than half, fourteen in total, are defined as complex, that is, consisting of six or more atoms. Of the detected species, the majority are oxygen-bearing while fewer contain nitrogen, sulphur or a combination thereof.

Assuming LTE, the column density is derived for all species detected towards AFGL 4176. With respect to methanol, the O-bearing species are approximately a factor of three more abundant than N-bearing species. This may indicate that AFGL 4176 is a relatively young source since nitrogen chemistry generally takes longer to evolve in the gas-phase compared with the chemistry of O-bearing species. Alternatively, if the composition of complex species is already set in the cold cloud stage, this gives an indication that formation of O-bearing species is favoured over that of N-bearing molecules. This may be due to inefficient reactions pathways (i.e. high diffusion energies and reactions barriers) for formation of N-bearing species, or due to a dominant nitrogen loss channel, for example into N_2 .

With the exception of $\text{CH}_3\text{C}_2\text{H}$, which shows two emission peaks, the spatial distribution of N- and O-bearing species is roughly similar. Generally, all species show emission peaks near the position of the continuum peak though some O-bearing species peak up to $0''.2$ away. Differences in the spatial extent of transitions of the same species with low and high E_{up} are seen for the majority of species. For a number of species a velocity gradient is detected across the source consistent with the Keplerian-like disk reported by Johnston et al. (2015).

Overall, the chemical composition of AFGL 4176 is more similar to that of the low-mass protostar IRAS 16293B than to that of the high-mass star-forming region Sgr B2(N). Taking methanol as a reference, the abundances of $\text{C}_2\text{H}_5\text{OH}$, CH_3OCH_3 , CH_3OCHO and $(\text{CH}_2\text{OH})_2$ in IRAS 16293B are within a factor of two of the abundances in AFGL 4176. In contrast, the $\text{C}_2\text{H}_5\text{OH}/\text{CH}_3\text{OH}$ and $\text{CH}_3\text{OCHO}/\text{CH}_3\text{OH}$ values de-

Table 6: Summary of column density ratios with respect to methanol predicted by models and derived towards AFGL 4176, Sgr B2(N), Orion KL, and IRAS 16293B.

		X/CH ₃ OH [%]							
		Sgr B2		Orion KL	AFGL 4176	IRAS 16293B ^a	Model		
		(N2)	(N3-5)				F	M	S
Hydrocarbons	CH ₃ C ₂ H	–	–	–	0.7 ± 0.2	–	–	–	–
	O-bearing	CH ₃ CHO	–	–	0.3 ± 0.2	1.20	0.03	0.10	0.37
	C ₂ H ₅ OH	5.0	7.6 – 10.4	0.37 – 1.98	1.4 ± 0.4	2.3	0.54	0.64	1.29
	CH ₃ OCH ₃	–	–	3.40 – 9.26	2.4 ± 0.3	2.4	0.44	0.69	0.74
	CH ₃ COCH ₃	–	–	0.05 – 0.15	1.0 ± 0.2	0.17	0.01	0.11	0.05
	CH ₃ OCHO	3.0	18.9 – 32.0	4.76 – 22.2	3.1 ± 0.6	2.6	0.84	0.41	0.08
	(CH ₂ OH) ₂	–	–	0.10 – 0.42	0.5 ± 0.2 – 0.6 ± 0.1	0.5 – 0.55 ^b	0.03	0.01	10 ⁻⁴
N-bearing	CH ₃ CN	5.78	10.6 – 13.4	–	0.62 ± 0.07	0.4	0.04	0.02	0.03
	NH ₂ CHO	8.75	0.83 – 1.16 ^c	–	0.18 ± 0.02	0.1	3.55	1.65	0.08
	C ₂ H ₅ CN	1.05	0.6 – 1.25	–	0.11 ± 0.02	0.007	0.1	0.06	0.15
	C ₂ H ₃ CN	17.25	4.8 – 8.11	–	0.12 ± 0.02	0.04	0.05	0.85	0.79
S-bearing	NS	–	–	–	0.22 ± 0.02	–	–	–	–
	H ₂ CS	–	–	–	0.78 ± 0.07	0.02	–	–	–
	SO ₂	–	–	–	14.7 ± 3.6	0.02	0.67	0.84	2.05
Reference		1, 2	3	this work	4, 5, 6, 7, 8, 9	10			

Notes. F = Fast model, M = Medium model, S = Slow model. ^(a) Listed values are derived at 0.5'' (one beam) offset from IRAS 16293B. ^(b) Derived at 0.25'' (half beam) offset from IRAS 16293B. ^(c) Excluding the upper limit of ≤0.56% derived for N4.

References. (1) Belloche et al. (2016); (2) Bonfand et al. (2017); (3) Tercero et al. (2018); (4) Coutens et al. (2016); (5) Jørgensen et al. (2016); (6) Lykke et al. (2017); (7) Calcutt et al. (2018); (8) Drozdovskaya et al. (2018); (9) Jørgensen et al. (2018); (10) Garrod (2013)

rived for Sgr B2(N) are higher than those in AFGL 4176 by up to an order of magnitude. For the N-bearing species, the abundances of CH₃CN, C₂H₅CN and NH₂CHO are similar between AFGL4176 and IRAS 16293B while C₂H₃CN/CH₃OH is lower by a factor of 16 in IRAS 16293B. For Sgr B2(N) the abundances of all N-bearing species are significantly higher than in AFGL 4176. The similarity between abundances in AFGL 4176 and IRAS 16293B indicates that the production of complex species does not depend strongly on the luminosity of sources, but may be universal despite differences in physical conditions or that the composition of species is set already in the ice during the cold cloud stage.

Acknowledgements. We thank the anonymous referee for their thorough review and for contributing many clarifications which helped us improve our manuscript. This paper makes use of the following ALMA data: ADS/JAO.ALMA#2012.1.00469.S. ALMA is a partnership of ESO (representing its member states), NSF (USA) and NINS (Japan), together with NRC (Canada) and NSC and ASIAA (Taiwan) and KASI (Republic of Korea), in cooperation with the Republic of Chile. The Joint ALMA Observatory is operated by ESO, AUI/NRAO and NAOJ.

References

Bailer-Jones, C. A. L., Rybizki, J., Fouesneau, M., Mantelet, G., & Andrae, R. 2018, *AJ*, 156, 58
Balucani, N., Ceccarelli, C., & Taquet, V. 2015, *MNRAS*, 449, L16
Barone, V., Latouche, C., Skouteris, D., et al. 2015, *MNRAS*, 453, L31
Belloche, A., Müller, H. S. P., Garrod, R. T., & Menten, K. M. 2016, *A&A*, 587, A91
Beltrán, M. T., Brand, J., Cesaroni, R., et al. 2006, *A&A*, 447, 221
Beltrán, M. T., Codella, C., Viti, S., Neri, R., & Cesaroni, R. 2009, *ApJ*, 690, L93
Bennett, C. J. & Kaiser, R. I. 2007, *ApJ*, 661, 899
Bisschop, S. E., Jørgensen, J. K., van Dishoeck, E. F., & de Wachter, E. B. M. 2007, *A&A*, 465, 913
Blake, G. A., Sutton, E. C., Masson, C. R., & Phillips, T. G. 1987, *ApJ*, 315, 621
Boley, P. A., Linz, H., van Boekel, R., et al. 2012, *A&A*, 547, A88

Bonfand, M., Belloche, A., Menten, K. M., Garrod, R. T., & Müller, H. S. P. 2017, *A&A*, 604, A60
Boonman, A. M. S., van Dishoeck, E. F., Lahuis, F., & Doty, S. D. 2003, *A&A*, 399, 1063
Bottinelli, S., Ceccarelli, C., Lefloch, B., et al. 2004, *ApJ*, 615, 354
Brouillet, N., Despois, D., Baudry, A., et al. 2013, *A&A*, 550, A46
Brouillet, N., Despois, D., Lu, X.-H., et al. 2015, *A&A*, 576, A129
Calcutt, H., Jørgensen, J. K., Müller, H. S. P., et al. 2018, *A&A*, 616, A90
Caselli, P. & Ceccarelli, C. 2012, *A&A Rev.*, 20, 56
Caux, E., Kahane, C., Castets, A., et al. 2011, *A&A*, 532, A23
Cazaux, S., Tielens, A. G. G. M., Ceccarelli, C., et al. 2003, *ApJ*, 593, L51
Charnley, S. 2001, in *The Bridge Between the Big Bang and Biology: Stars, Planetary Systems, Atmospheres, Volcanoes: Their Link to Life*, ed. F. Giovannelli, 139
Charnley, S. B., Tielens, A. G. G. M., & Millar, T. J. 1992, *ApJ*, 399, L71
Chuang, K.-J., Fedoseev, G., Qasim, D., et al. 2017, *MNRAS*, 467, 2552
Codella, C., Ceccarelli, C., Caselli, P., et al. 2017, *A&A*, 605, L3
Cole, C. A., Wehres, N., Yang, Z., et al. 2012, *ApJ*, 754, L5
Colzi, L., Fontani, F., Caselli, P., et al. 2018, *A&A*, 609, A129
Coutens, A., Jørgensen, J. K., van der Wiel, M. H. D., et al. 2016, *A&A*, 590, L6
Coutens, A., Persson, M. V., Jørgensen, J. K., Wampfler, S. F., & Lykke, J. M. 2015, *A&A*, 576, A5
Coutens, A., Viti, S., Rawlings, J. M. C., et al. 2018, *MNRAS*, 475, 2016
Crockett, N. R., Bergin, E. A., Neill, J. L., et al. 2015, *ApJ*, 806, 239
Crockett, N. R., Bergin, E. A., Neill, J. L., et al. 2014, *ApJ*, 787, 112
De Buizer, J. M. 2003, *MNRAS*, 341, 277
Drozdovskaya, M. N., van Dishoeck, E. F., Jørgensen, J. K., et al. 2018, *MNRAS*, 476, 4949
Dzib, S. A., Loinard, L., Ortiz-León, G. N., Rodríguez, L. F., & Galli, P. A. B. 2018, *ApJ*, 867, 151
Endres, C. P., Schlemmer, S., Schilke, P., Stutzki, J., & Müller, H. S. P. 2016, *Journal of Molecular Spectroscopy*, 327, 95
Favre, C., Pagani, L., Goldsmith, P. F., et al. 2017, *A&A*, 604, L2
Fayolle, E. C., Öberg, K. I., Garrod, R. T., van Dishoeck, E. F., & Bisschop, S. E. 2015, *A&A*, 576, A45
Fedoseev, G., Chuang, K.-J., van Dishoeck, E. F., Ioppolo, S., & Linnartz, H. 2016, *MNRAS*, 460, 4297
Garrod, R. T. 2013, *ApJ*, 765, 60
Garrod, R. T., Belloche, A., Müller, H. S. P., & Menten, K. M. 2017, *A&A*, 601, A48
Garrod, R. T. & Herbst, E. 2006, *A&A*, 457, 927
Garrod, R. T., Widicus Weaver, S. L., & Herbst, E. 2008, *ApJ*, 682, 283
Green, J. A. & McClure-Griffiths, N. M. 2011, *MNRAS*, 417, 2500

- Hatchell, J., Thompson, M. A., Millar, T. J., & MacDonald, G. H. 1998, *A&AS*, 133, 29
- Henning, T., Friedemann, C., Guertler, J., & Dorschner, J. 1984, *Astronomische Nachrichten*, 305, 67
- Herbst, E. & van Dishoeck, E. F. 2009, *ARA&A*, 47, 427
- Hollis, J. M., Lovas, F. J., & Jewell, P. R. 2000, *ApJ*, 540, L107
- Ikeda, M., Ohishi, M., Nummelin, A., et al. 2001, *ApJ*, 560, 792
- Isokoski, K., Bottinelli, S., & van Dishoeck, E. F. 2013, *A&A*, 554, A100
- Johnston, K. G., Beuther, H., Linz, H., et al. 2014, in *Astrophysics and Space Science Proceedings*, Vol. 36, *The Labyrinth of Star Formation*, ed. D. Stamatellos, S. Goodwin, & D. Ward-Thompson, 413
- Johnston, K. G., Robitaille, T. P., Beuther, H., et al. 2015, *ApJ*, 813, L19
- Jones, B. M., Bennett, C. J., & Kaiser, R. I. 2011, *ApJ*, 734, 78
- Jørgensen, J. K., Favre, C., Bisschop, S. E., et al. 2012, *ApJ*, 757, L4
- Jørgensen, J. K., Müller, H. S. P., Calcutt, H., et al. 2018, *A&A*, 620, A170
- Jørgensen, J. K., van der Wiel, M. H. D., Coutens, A., et al. 2016, *A&A*, 595, A117
- Kalenskii, S. V. & Johansson, L. E. B. 2010, *Astronomy Reports*, 54, 1084
- Ligterink, N. F. W., Terwisscha van Scheltinga, J., Taquet, V., et al. 2018, *MNRAS*, 480, 3628
- López-Sepulcre, A., Jaber, A. A., Mendoza, E., et al. 2015, *MNRAS*, 449, 2438
- Lykke, J. M., Coutens, A., Jørgensen, J. K., et al. 2017, *A&A*, 597, A53
- Lykke, J. M., Favre, C., Bergin, E. A., & Jørgensen, J. K. 2015, *A&A*, 582, A64
- McGuire, B. A., Brogan, C. L., Hunter, T. R., et al. 2018, *ApJ*, 863, L35
- McGuire, B. A., Shingledecker, C. N., Willis, E. R., et al. 2017, *ApJ*, 851, L46
- Menten, K. M., Reid, M. J., Forbrich, J., & Brunthaler, A. 2007, *A&A*, 474, 515
- Milam, S. N., Savage, C., Brewster, M. A., Ziurys, L. M., & Wyckoff, S. 2005, *ApJ*, 634, 1126
- Müller, H. S. P., Schöder, F., Stutzki, J., & Winnewisser, G. 2005, *Journal of Molecular Structure*, 742, 215
- Müller, H. S. P., Thorwirth, S., Roth, D. A., & Winnewisser, G. 2001, *A&A*, 370, L49
- Neill, J. L., Bergin, E. A., Lis, D. C., et al. 2014, *ApJ*, 789, 8
- Neill, J. L., Steber, A. L., Muckle, M. T., et al. 2011, *Journal of Physical Chemistry A*, 115, 6472
- Noble, J. A., Theule, P., Congiu, E., et al. 2015, *A&A*, 576, A91
- Ossenkopf, V. & Henning, T. 1994, *A&A*, 291, 943
- Pagani, L., Favre, C., Goldsmith, P. F., et al. 2017, *A&A*, 604, A32
- Peng, Y., Qin, S.-L., Schilke, P., et al. 2017, *ApJ*, 837, 49
- Peng, Y., Rivilla, V. M., Zhang, L., Ge, J. X., & Zhou, B. 2019, *ApJ*, 871, 251
- Phillips, C. J., Norris, R. P., Ellingsen, S. P., & McCulloch, P. M. 1998, *MNRAS*, 300, 1131
- Pickett, H. M., Poynter, R. L., Cohen, E. A., et al. 1998, *J. Quant. Spectr. Rad. Transf.*, 60, 883
- Qin, S.-L., Wu, Y., Huang, M., et al. 2010, *ApJ*, 711, 399
- Quénard, D., Jiménez-Serra, I., Viti, S., Holdship, J., & Coutens, A. 2018, *MNRAS*, 474, 2796
- Rivilla, V. M., Beltrán, M. T., Cesaroni, R., et al. 2017, *A&A*, 598, A59
- Sakai, N. & Yamamoto, S. 2013, *Chemical Reviews*, 113, 8981
- Schöier, F. L., Jørgensen, J. K., van Dishoeck, E. F., & Blake, G. A. 2002, *A&A*, 390, 1001
- Suzuki, T., Ohishi, M., Saito, M., et al. 2018, *ApJS*, 237, 3
- Taquet, V., López-Sepulcre, A., Ceccarelli, C., et al. 2015, *ApJ*, 804, 81
- Taquet, V., Wirström, E. S., & Charnley, S. B. 2016, *ApJ*, 821, 46
- Tercero, B., Cuadrado, S., López, A., et al. 2018, *A&A*, 620, L6
- Tielens, A. G. G. M. 2013, *Reviews of Modern Physics*, 85, 1021
- van der Tak, F. F. S., van Dishoeck, E. F., & Caselli, P. 2000, *A&A*, 361, 327
- van Dishoeck, E. F., Blake, G. A., Jansen, D. J., & Groesbeck, T. D. 1995, *ApJ*, 447, 760
- van Dishoeck, E. F. & Helmich, F. P. 1996, *A&A*, 315, L177
- van Dishoeck, E. F., Helmich, F. P., de Graauw, T., et al. 1996, *A&A*, 315, L349
- Vasyunin, A. I. & Herbst, E. 2013, *ApJ*, 769, 34
- Woods, P. M., Kelly, G., Viti, S., et al. 2012, *ApJ*, 750, 19
- Woods, P. M., Slater, B., Raza, Z., et al. 2013, *ApJ*, 777, 90

Appendix A: Model grids

Appendix B: Unidentified lines

Table A.1: Overview of model grids.

N_s range [cm^{-2}]:	$10^{15} - 10^{16}$	$5 \times 10^{15} - 5 \times 10^{16}$	$10^{16} - 10^{17}$	$5 \times 10^{16} - 5 \times 10^{17}$	$10^{16} - 5 \times 10^{17}$	$5 \times 10^{17} - 5 \times 10^{18}$
Species	$\text{C}_2\text{H}_3\text{CN}$	CH_3CHO NH_2CHO	$\text{CH}_3\text{C}_2\text{H}$ CH_3CN $\text{CH}_3\text{CN}, v_8=1$ H_2CS $(\text{CH}_2\text{OH})_2$	$^{13}\text{CH}_3\text{OH}$ CH_3OCH_3 CH_3OCHO	$\text{C}_2\text{H}_5\text{OH}$	SO_2

Notes. All grids have T_{ex} spanning 50 – 500 K in steps of 10 K and N_s sampled by 20 logarithmically spaced steps, apart from the grid for $\text{C}_2\text{H}_5\text{OH}$ which has 30 logarithmically spaced steps.

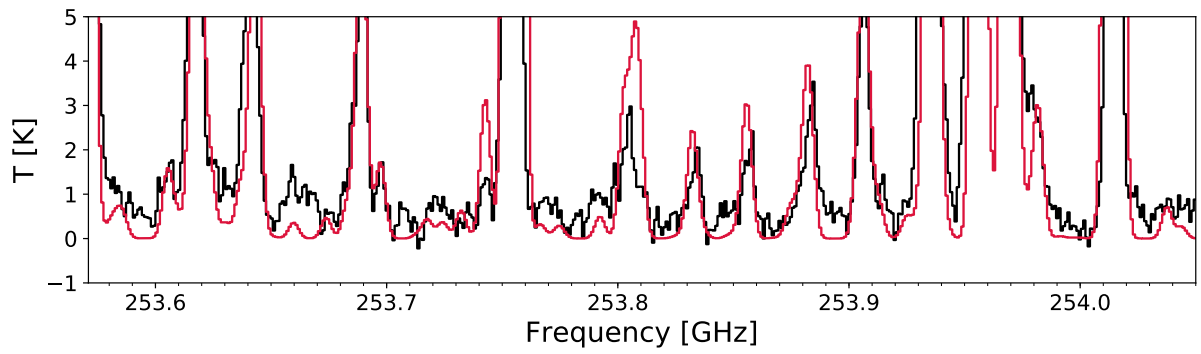
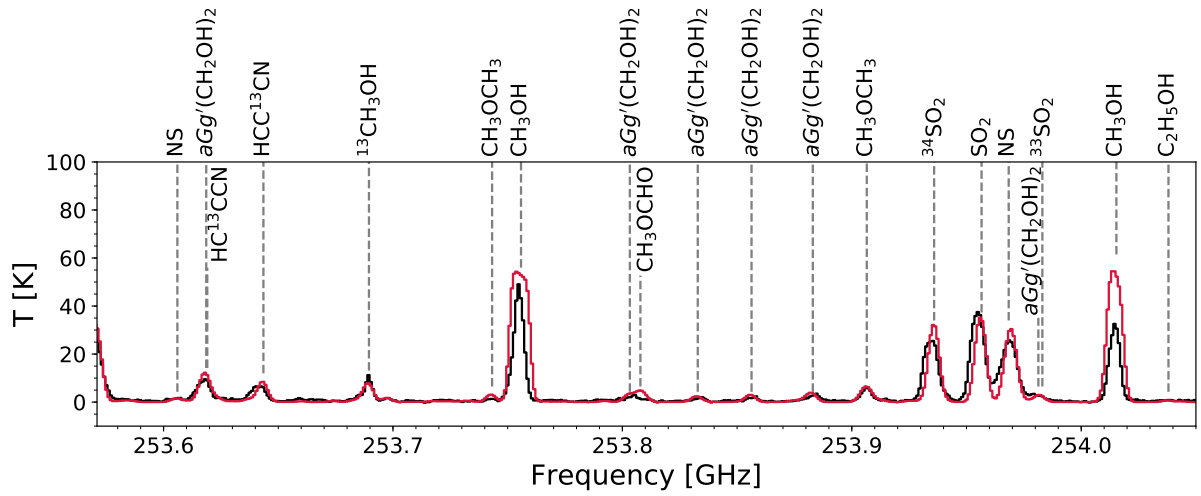
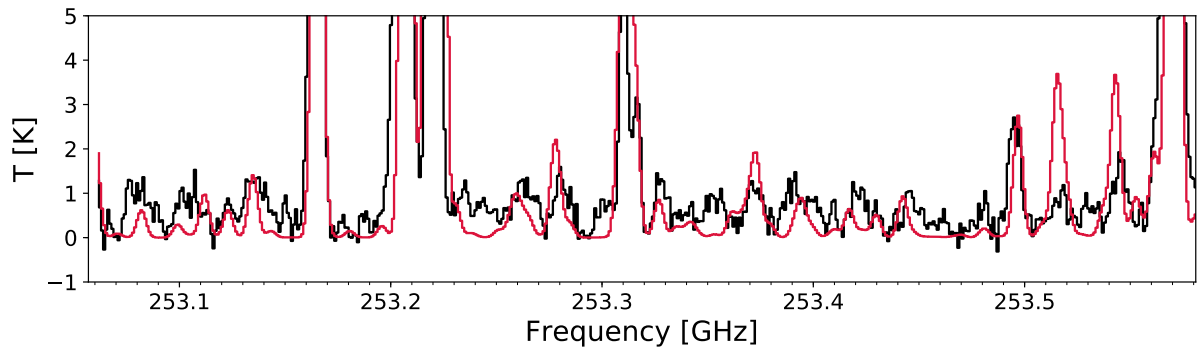
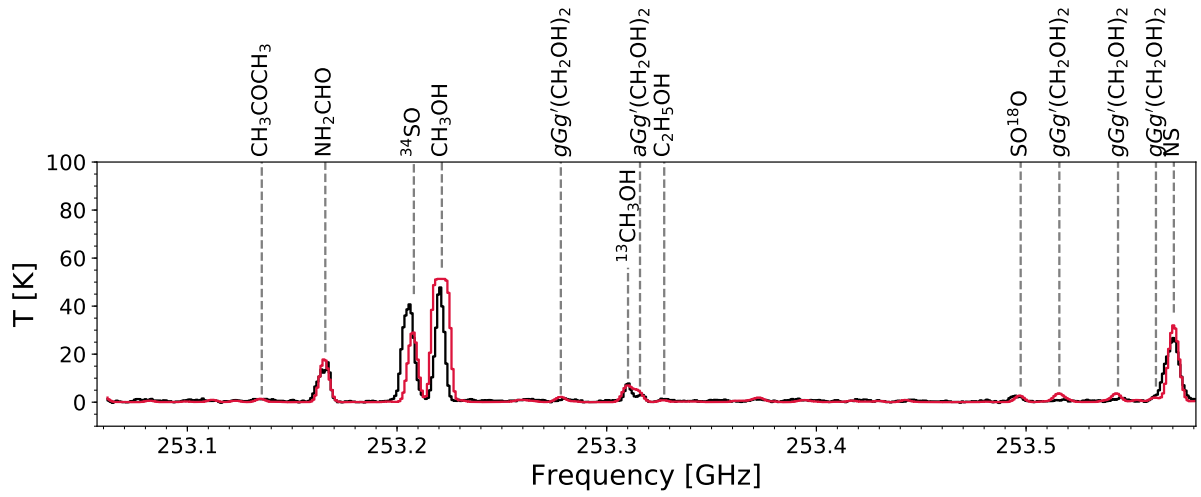
Table B.1: List of unidentified lines.

Rest frequency ^a [GHz]	Peak intensity [K]
238.806	1.9
239.078	4.2
239.082	3.6
239.651	1.9
239.655	2.7
239.926	1.9
240.129	2.0
240.132	2.0
240.155	2.1
240.517	2.5
240.562	2.0
240.565	2.2
240.574	1.9
240.579	2.2
240.702	2.1
240.718	2.0
240.753	2.0
241.102	1.4
241.127	1.5
254.192	2.9
254.340	2.0
254.346	2.6
254.581	3.9
254.669	3.0
254.686	7.0
254.713	5.7
254.716	5.2
254.858	4.6
256.107	3.8
256.111	3.8

Notes. ^(a) Assuming a source velocity of -53.5 km s^{-1} .

Appendix C: Full model

Appendix D: Line maps



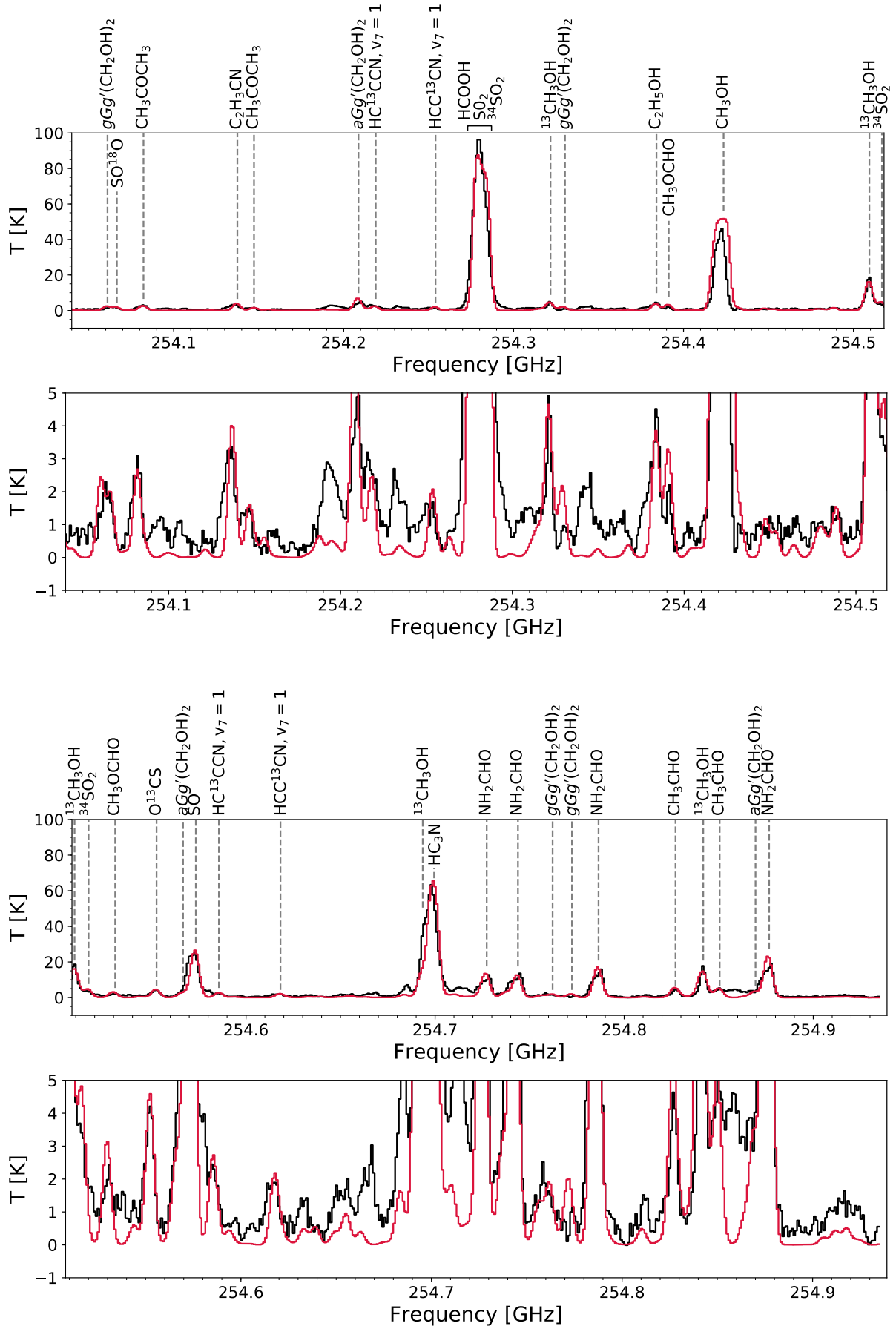
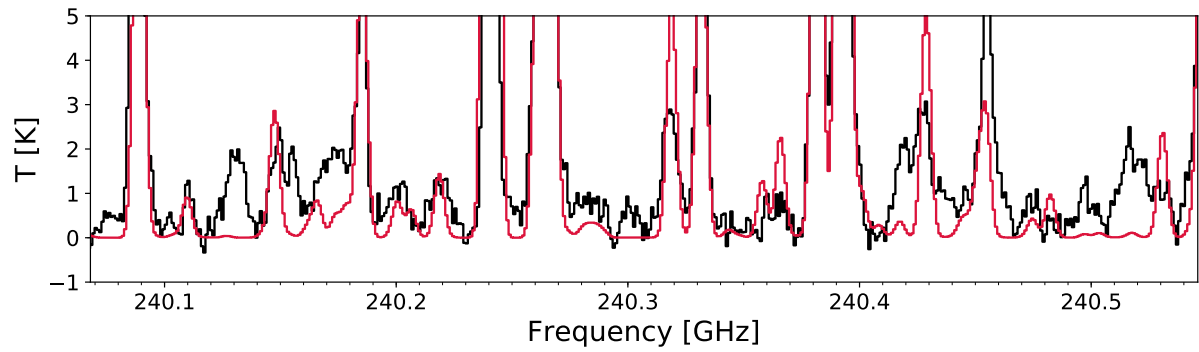
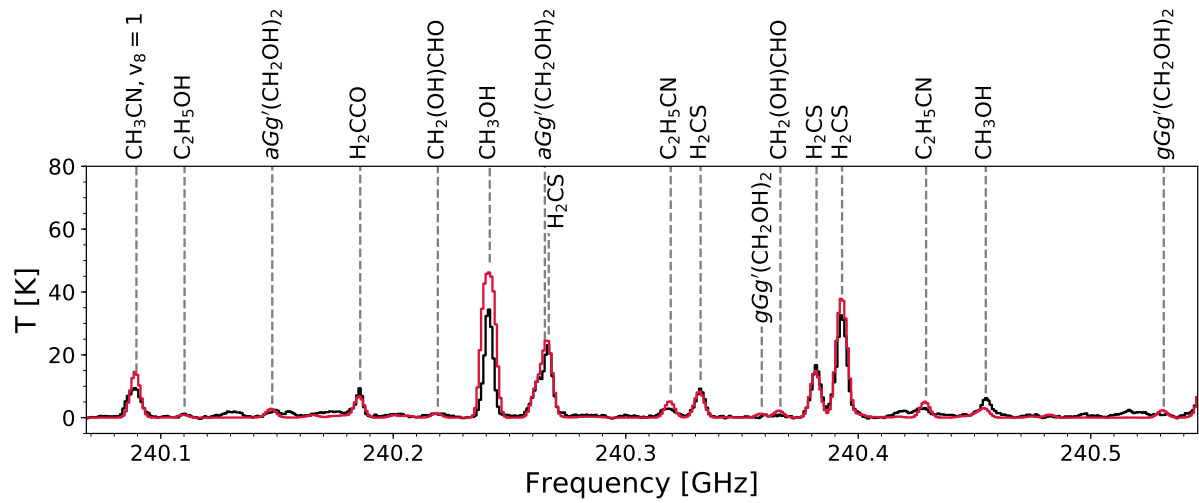
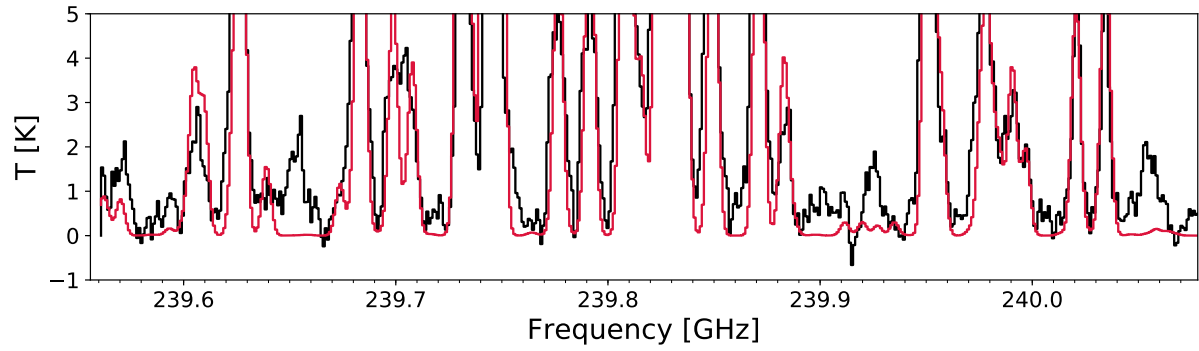
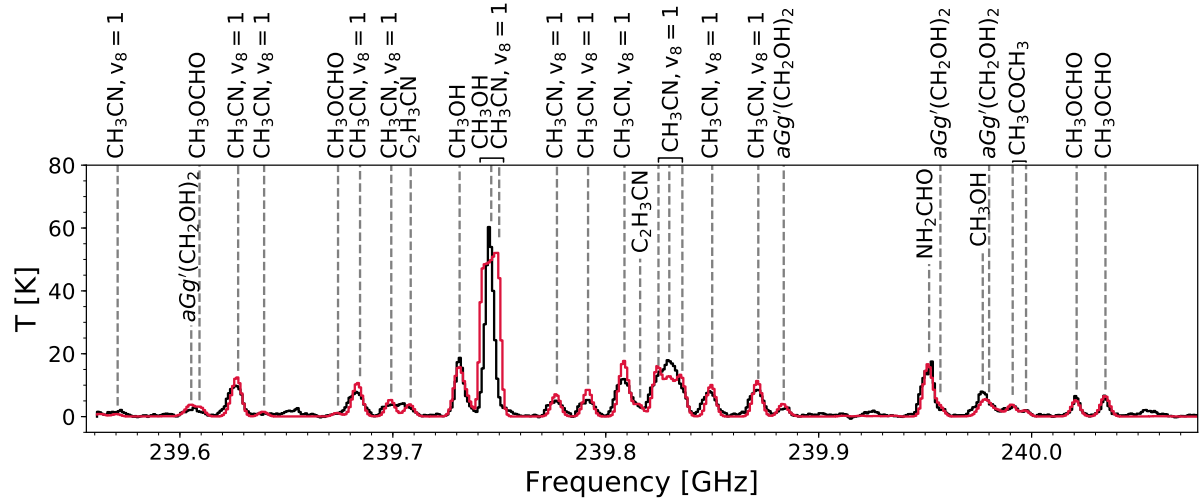


Fig. C.2: Same as Fig. 2 for species detected towards AFGL 4176 in the spectral window centred at 254.0 GHz.
 Article number, page 18 of 25



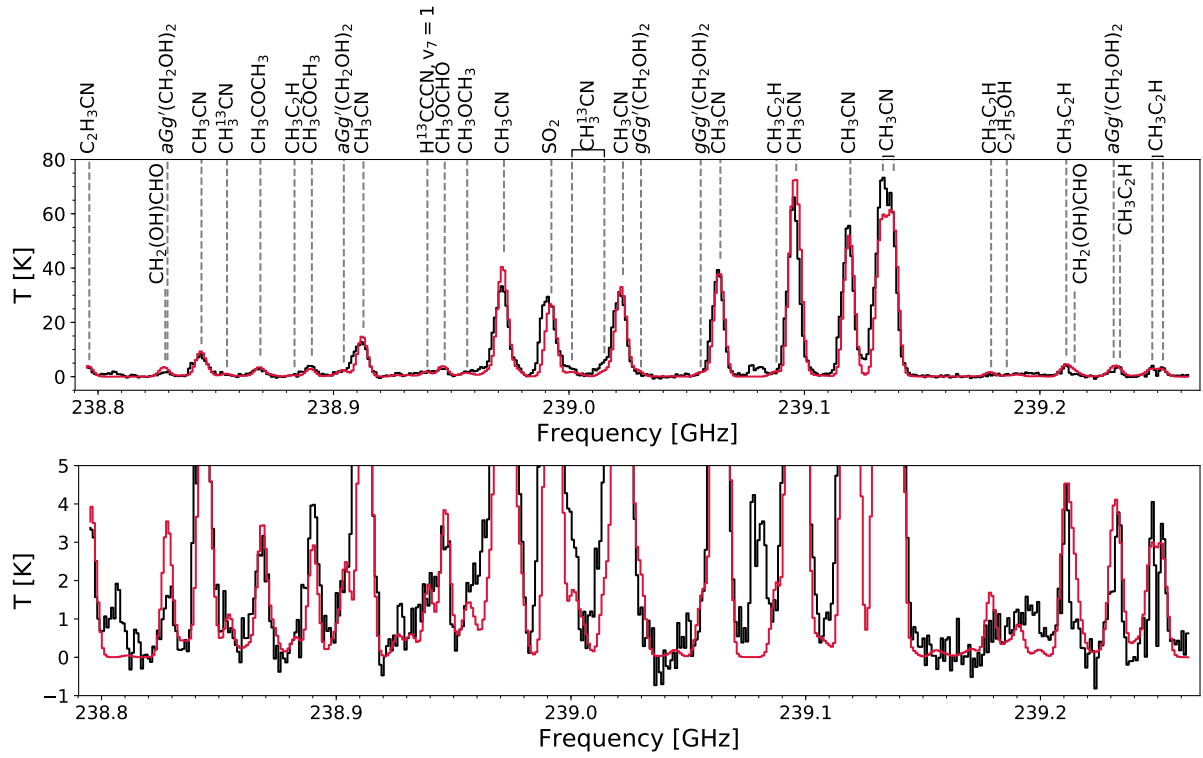


Fig. C.5: Same as Fig. 2 for species detected towards AFGL 4176 in the spectral window centred at 239.0 GHz.

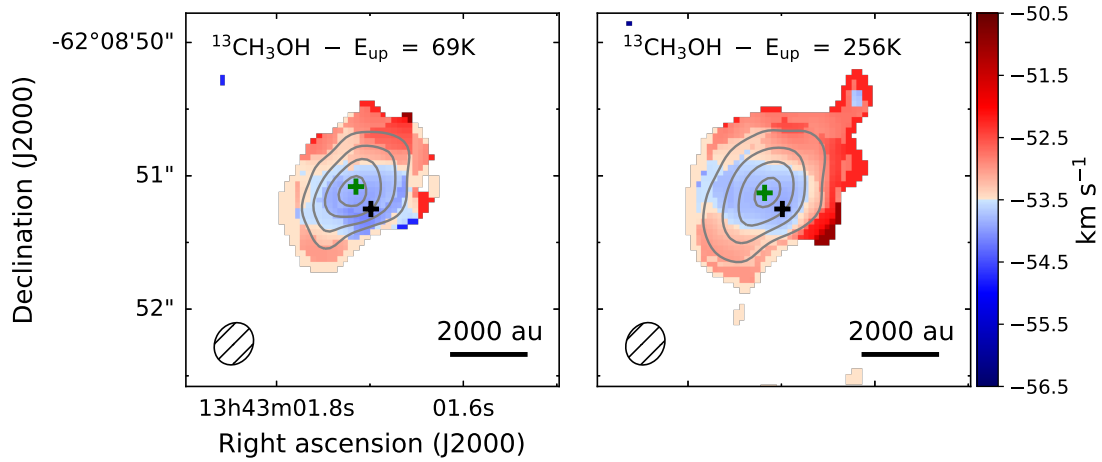


Fig. D.1: Same as Fig. 3 for $^{13}\text{CH}_3\text{OH}$ lines at 256.1716 GHz (left) and 253.6895 GHz (right). Contours start at 9σ and are in steps of 6σ and 12σ , with $\sigma = 6.27 \times 10^{-3}$ and 6.87×10^{-3} Jy beam $^{-1}$ km s $^{-1}$, for the left and right panel, respectively.

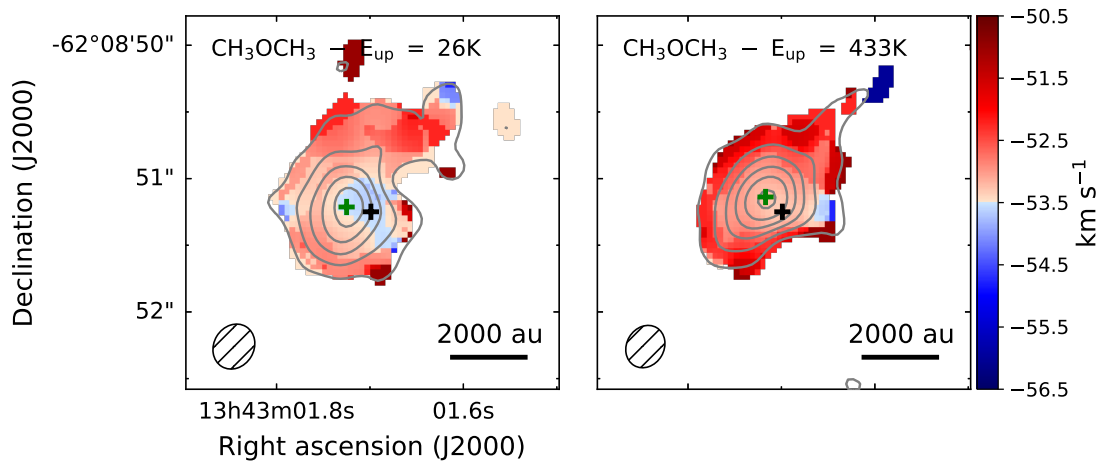


Fig. D.2: Same as Fig. 3 for CH_3OCH_3 lines at 240.9851 GHz (left) and 253.9075 GHz (right). Contours start at 3σ and are in steps of 6σ , with $\sigma = 4.95 \times 10^{-3}$ and 6.08×10^{-3} Jy beam $^{-1}$ km s $^{-1}$, for the left and right panel, respectively.

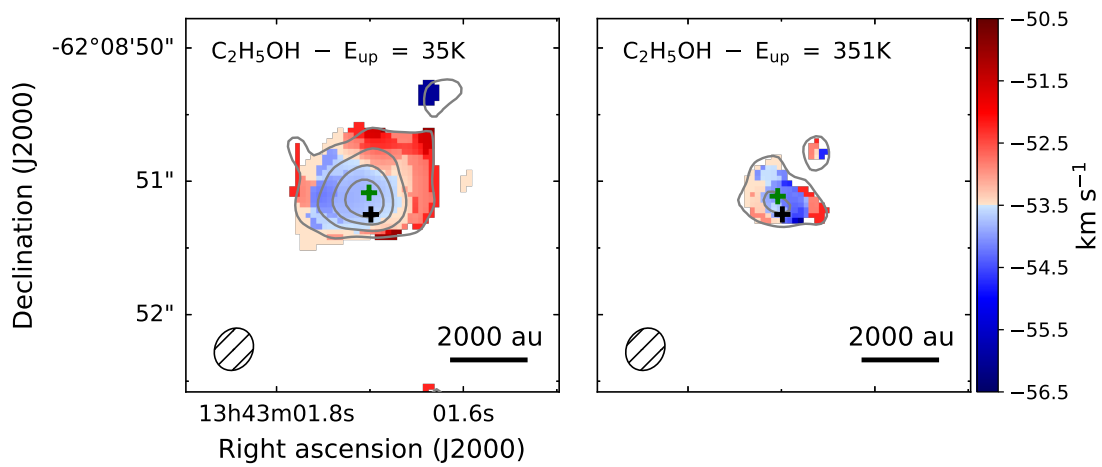


Fig. D.3: Same as Fig. 3 for $\text{C}_2\text{H}_5\text{OH}$ lines at 254.3841 GHz (left) and 253.3274 GHz (right). Contours start at 3σ and are in steps of 6σ , with $\sigma = 5.58 \times 10^{-3}$ and 5.39×10^{-3} Jy beam $^{-1}$ km s $^{-1}$, for the left and right panel, respectively.

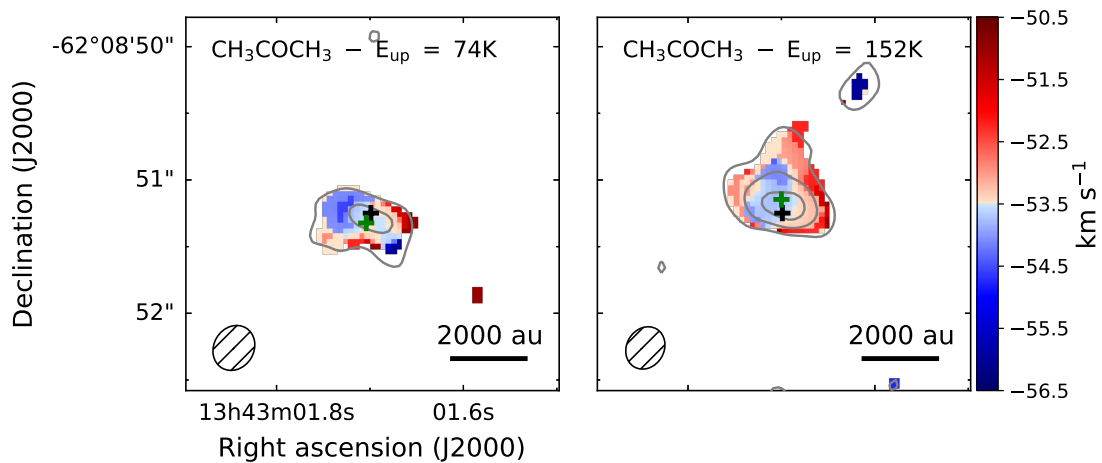


Fig. D.4: Same as Fig. 3 for CH_3COCH_3 lines at 240.9988 GHz (left) and 254.0822 GHz (right). Contours start at 3σ and are in steps of 6σ , with $\sigma = 4.96 \times 10^{-3}$ and 5.32×10^{-3} Jy beam $^{-1}$ km s $^{-1}$, for the left and right panel, respectively.

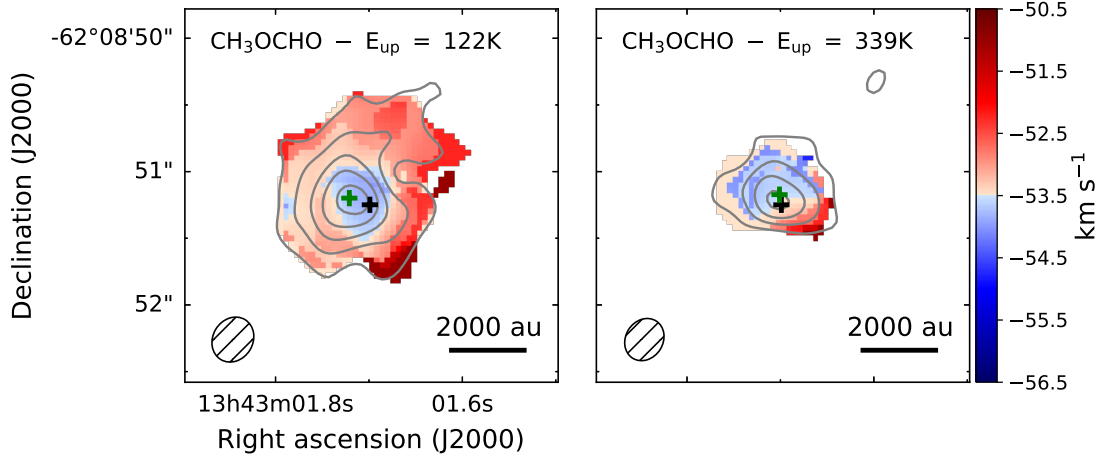


Fig. D.5: Same as Fig. 3 for CH₃OCHO lines at 240.0211 GHz (left) and 256.4478 GHz (right). Contours start at 3σ and are in steps of 6σ , with $\sigma = 5.36 \times 10^{-3}$ and 5.96×10^{-3} Jy beam⁻¹ km s⁻¹, for the left and right panel, respectively.

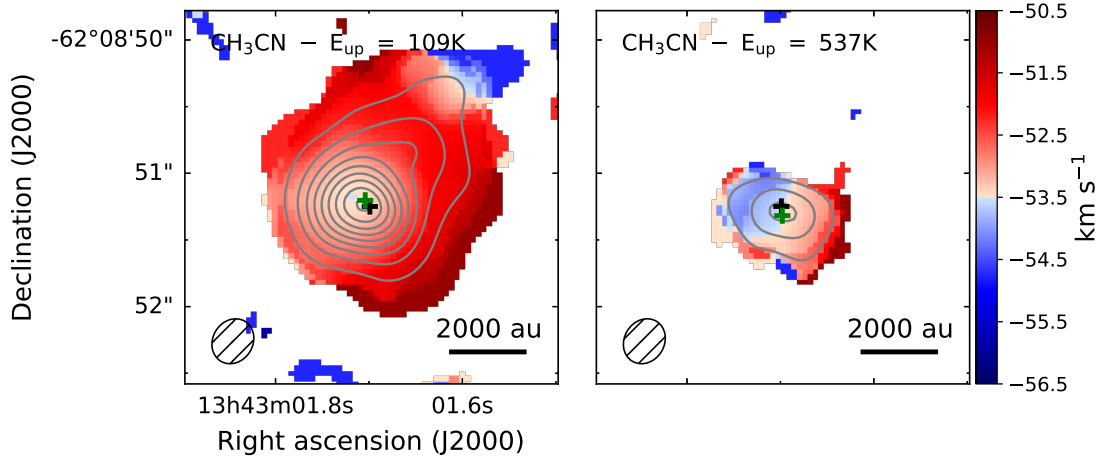


Fig. D.6: Same as Fig. 3 for CH₃CN lines at 239.0965 GHz (left) and 238.8439 GHz (right). Contours start at 9σ and are in steps of 12σ , with $\sigma = 1.26 \times 10^{-2}$ and 5.78×10^{-3} Jy beam⁻¹ km s⁻¹, for the left and right panel, respectively.

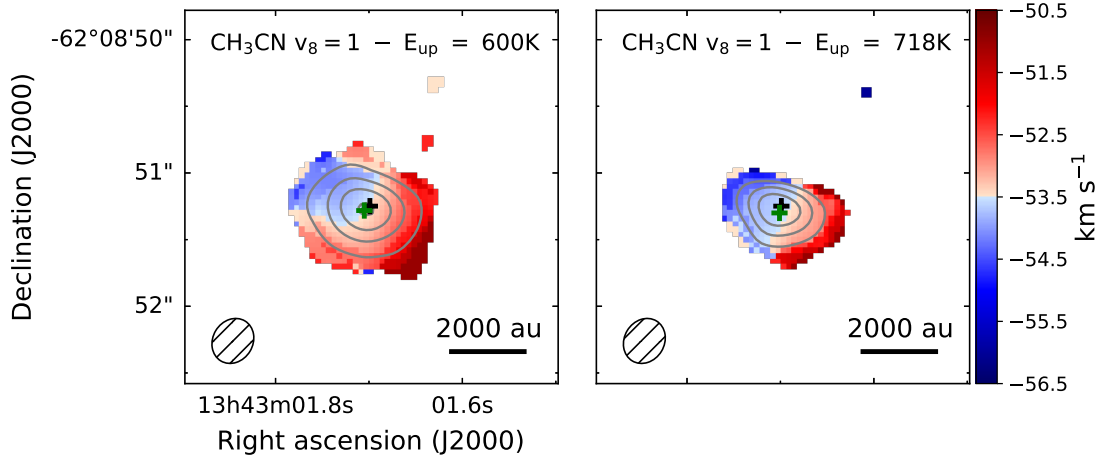


Fig. D.7: Same as Fig. 3 for vibrationally excited CH₃CN lines at 240.0895 GHz (left) and 239.7917 GHz (right). Contours start at 9σ and are in steps of 12σ and 6σ , with $\sigma = 5.41 \times 10^{-3}$, for the left and right panel, respectively.

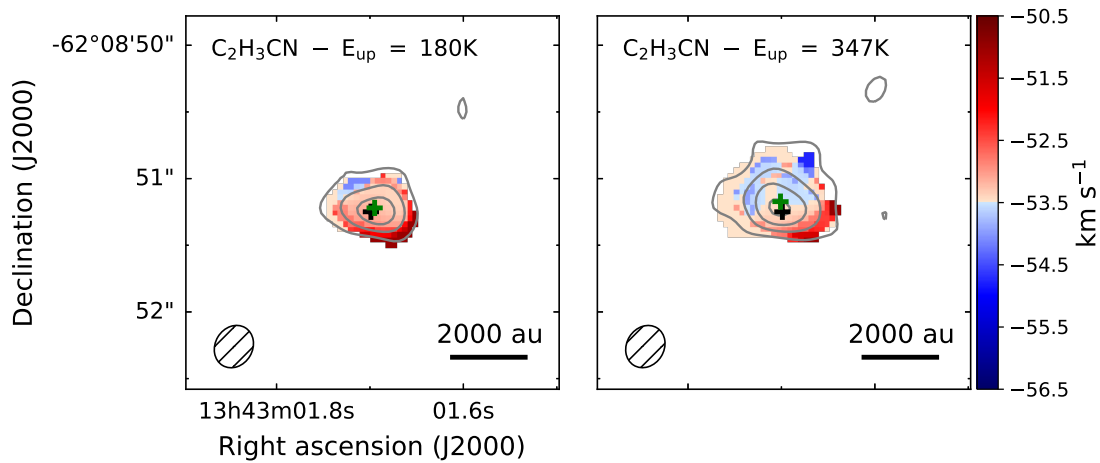


Fig. D.8: Same as Fig. 3 for $\text{C}_2\text{H}_3\text{CN}$ lines at 254.1375 GHz (left) and 256.4480 GHz (right). Contours start at 3σ and are in steps of 6σ , with $\sigma = 5.29 \times 10^{-3}$ and 6.0×10^{-3} $\text{Jy beam}^{-1} \text{ km s}^{-1}$, for the left and right panel, respectively.

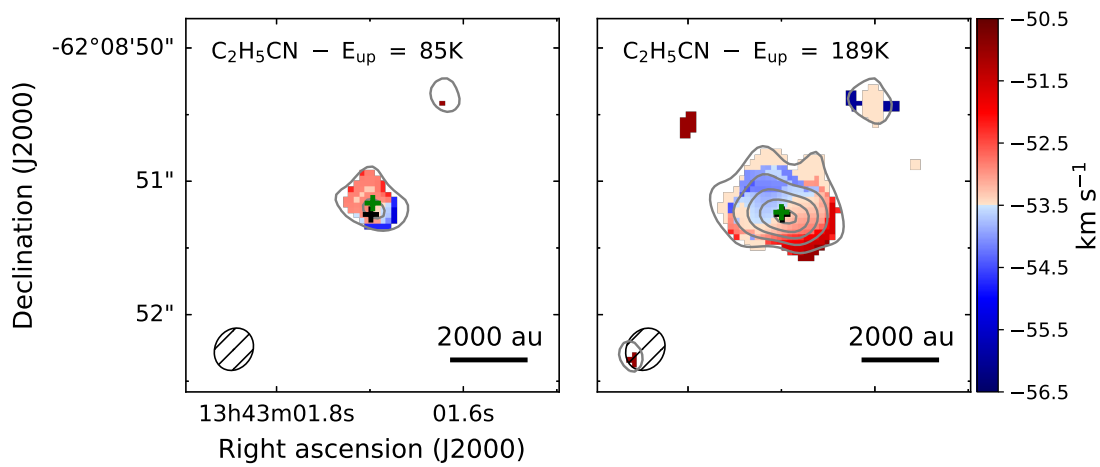


Fig. D.9: Same as Fig. 3 for $\text{C}_2\text{H}_5\text{CN}$ lines at 254.6336 GHz (left) and 256.3959 GHz (right). Contours start at 3σ and are in steps of 6σ , with $\sigma = 5.18 \times 10^{-3}$ and 5.7×10^{-3} $\text{Jy beam}^{-1} \text{ km s}^{-1}$, for the left and right panel, respectively.

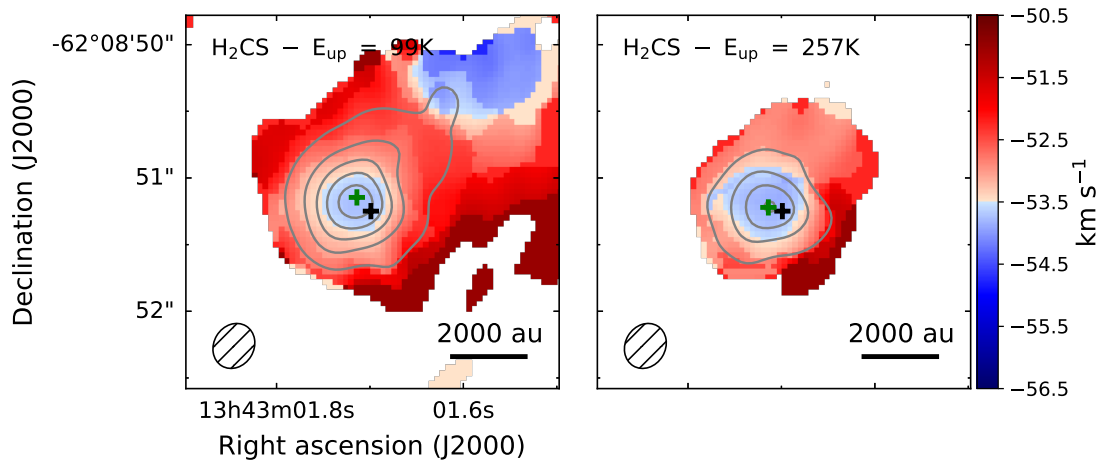


Fig. D.10: Same as Fig. 3 for H_2CS lines at 240.5491 GHz (left) and 240.3322 GHz (right). Contours start at 9σ and are in steps of 12σ , with $\sigma = 6.81 \times 10^{-3}$ and 5.27×10^{-3} $\text{Jy beam}^{-1} \text{ km s}^{-1}$, for the left and right panel, respectively.

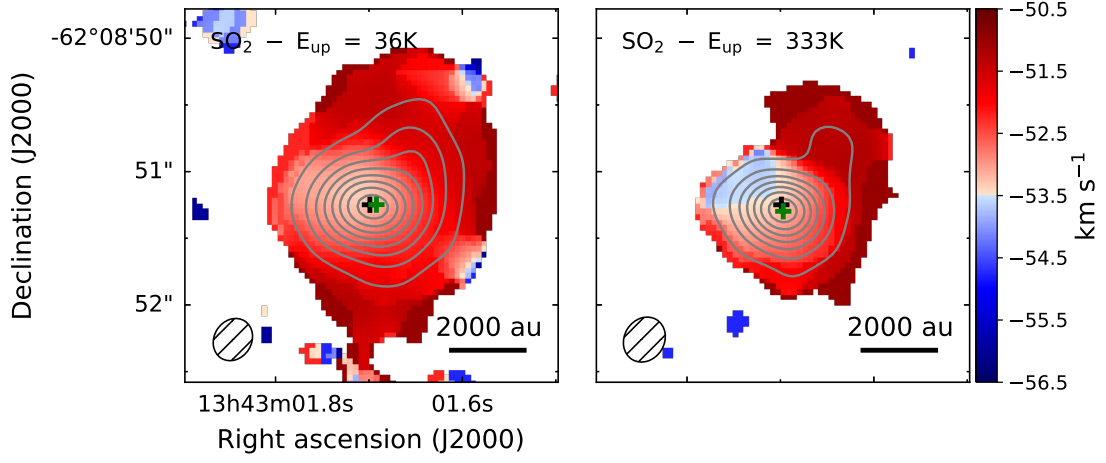


Fig. D.11: Same as Fig. 3 for SO₂ lines at 256.2469 GHz (left) and 238.9925 GHz (right). Contours start at 9σ and are in steps of 12σ , with $\sigma = 1.96 \times 10^{-2}$ and 8.63×10^{-3} Jy beam⁻¹ km s⁻¹, for the left and right panel, respectively.

Table D.1: Spatial extent of molecules mapped towards AFGL 4176

Species	E_{up}	RA	Dec	FWHM _X	FWHM _Y
				[mas]	
CH ₃ C ₂ H	low	13:43:01.748 ± 0.008	-62.08.51.30 ± 0.07	1055 ± 172	659 ± 95
	high	13:43:01.739 ± 0.007	-62.08.51.29 ± 0.05	944 ± 127	560 ± 63
CH ₃ OH	low	13:43:01.7138 ± 0.0009	-62.08.51.086 ± 0.007	784 ± 18	564 ± 12
	high	13:43:01.7172 ± 0.0007	-62.08.51.154 ± 0.006	694 ± 16	535 ± 11
¹³ CH ₃ OH	low	13:43:01.715 ± 0.002	-62.08.51.09 ± 0.02	711 ± 37	489 ± 22
	high	13:43:01.718 ± 0.001	-62.08.51.129 ± 0.008	715 ± 22	479 ± 12
CH ₃ OCH ₃	low	13:43:01.726 ± 0.002	-62.08.51.22 ± 0.02	687 ± 41	535 ± 29
	high	13:43:01.718 ± 0.002	-62.08.51.14 ± 0.02	653 ± 35	460 ± 21
C ₂ H ₅ OH	low	13:43:01.706 ± 0.003	-62.08.51.09 ± 0.02	580 ± 47	464 ± 33
	high	13:43:01.704 ± 0.008	-62.08.51.12 ± 0.03	501 ± 123	321 ± 57
CH ₃ COCH ₃	low	13:43:01.704 ± 0.007	-62.08.51.33 ± 0.02	590 ± 117	305 ± 37
	high	13:43:01.701 ± 0.005	-62.08.51.15 ± 0.02	531 ± 73	345 ± 35
CH ₃ OCHO	low	13:43:01.722 ± 0.002	-62.08.51.20 ± 0.02	701 ± 38	616 ± 32
	high	13:43:01.701 ± 0.003	-62.08.51.18 ± 0.02	526 ± 3	373 ± 28
CH ₃ CN	low	13:43:01.704 ± 0.003	-62.08.51.21 ± 0.02	726 ± 37	654 ± 32
	high	13:43:01.698 ± 0.002	-62.08.51.318 ± 0.007	572 ± 26	391 ± 14
CH ₃ CN, v8 = 1	low	13:43:01.705 ± 0.001	-62.08.51.283 ± 0.005	559 ± 16	430 ± 11
	high	13:43:01.701 ± 0.003	-62.08.51.31 ± 0.01	535 ± 40	348 ± 19
NH ₂ CHO	low	13:43:01.7020 ± 0.0007	-62.08.51.234 ± 0.004	567 ± 12	434 ± 8
	high	13:43:01.6997 ± 0.0009	-62.08.51.183 ± 0.005	559 ± 16	392 ± 9
C ₂ H ₃ CN	low	13:43:01.696 ± 0.004	-62.08.51.23 ± 0.02	441 ± 56	295 ± 26
	high	13:43:01.701 ± 0.003	-62.08.51.18 ± 0.02	519 ± 51	387 ± 32
C ₂ H ₅ CN	low	13:43:01.697 ± 0.009	-62.08.51.17 ± 0.04	400 ± 141	256 ± 59
	high	13:43:01.700 ± 0.003	-62.08.51.24 ± 0.01	565 ± 41	362 ± 20
H ₂ CS	low	13:43:01.714 ± 0.003	-62.08.51.15 ± 0.02	756 ± 40	625 ± 31
	high	13:43:01.715 ± 0.002	-62.08.51.23 ± 0.02	599 ± 26	562 ± 24
SO ₂	low	13:43:01.692 ± 0.002	-62.08.51.25 ± 0.02	728 ± 29	624 ± 24
	high	13:43:01.6972 ± 0.0009	-62.08.51.299 ± 0.006	550 ± 15	470 ± 12

Notes. Fit parameters for the 2D gaussian fit to the zero-moment maps of the low and high upper state energy transitions mapped in Fig. 3 and Figs. D.1 – D.11.