



Universiteit
Leiden
The Netherlands

Not so smooth after all: resolving dust and gas structures in protoplanetary disks

Cazzoletti, P.

Citation

Cazzoletti, P. (2019, December 12). *Not so smooth after all: resolving dust and gas structures in protoplanetary disks*. Retrieved from <https://hdl.handle.net/1887/81821>

Version: Publisher's Version

License: [Licence agreement concerning inclusion of doctoral thesis in the Institutional Repository of the University of Leiden](#)

Downloaded from: <https://hdl.handle.net/1887/81821>

Note: To cite this publication please use the final published version (if applicable).

Cover Page



Universiteit Leiden



The handle <http://hdl.handle.net/1887/81821> holds various files of this Leiden University dissertation.

Author: Cazzoletti, P.

Title: Not so smooth after all: resolving dust and gas structures in protoplanetary disks

Issue Date: 2019-12-12

3 | Vortices and Spirals in the HD135344B Transition Disk

van der Marel, N., Cazzoletti, P., Pinilla, P., and Garufi, A., 2016,
Astrophysical Journal, 832, 178

Abstract

In recent years spiral structures have been seen in scattered light observations and signs of vortices in millimeter images of protoplanetary disks, both probably linked with the presence of planets. We present ALMA Band 7 (335 GHz or 0.89 mm) continuum observations of the transition disk HD135344B at unprecedented spatial resolution of 0.16", using superuniform weighting. The data show that the asymmetric millimeter dust ring seen in previous work actually consists of an inner ring and an outer asymmetric structure. The outer feature is cospatial with the end of one of the spiral arms seen in scattered light, but the feature itself is not consistent with a spiral arm due to its coradiance. We propose a new possible scenario to explain the observed structures at both wavelengths. Hydrodynamical simulations show that a massive planet can generate a primary vortex (which dissipates at longer timescales, becoming an axisymmetric ring) and trigger the formation of a second generation vortex further out. Within this scenario the two spiral arms observed at scattered light originate from a planet at ~ 30 AU and from the secondary vortex at ~ 75 AU rather than a planet further out as previously reported.

3.1 Introduction

Protoplanetary disks are the cradles of young planets, where several dynamical processes are likely involved in the planet formation process (e.g. Armitage, 2011). Of particular interest are the transition disks, disks with inner millimeter-dust cavities. In the last decade, observations have revealed that some transition disks are far from axisymmetric: azimuthal asymmetries in the submillimeter continuum are thought to be dust traps, triggered by vortices acting as azimuthal pressure bumps (e.g. van der Marel et al., 2013; Lyra and Lin, 2013; Birnstiel et al., 2013a). On the other hand, near-infrared scattered light observations show large spirals (e.g. Muto et al., 2012; Garufi et al., 2013; Grady et al., 2013; Avenhaus et al., 2014). Both spirals and vortices may indicate the presence of recently formed massive planets: in the case of a vortex through Rossby wave instability (RWI) at the steep edges of the gap that is carved by the planet (Lovelace et al., 1999; de Val-Borro et al., 2007) and in the case of spirals through the trigger of density waves directly by the planet (e.g. Kley and Nelson, 2012).

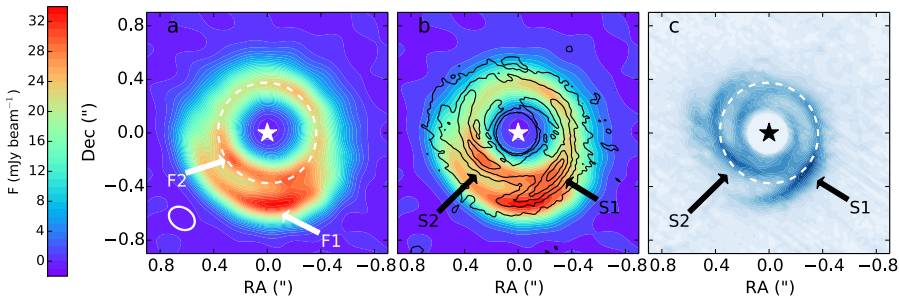


Figure 3.1: **a.** 335 GHz continuum emission of HD 135344B in superuniform weighting. **b.** Overlay of the PDI image of Garufi et al. (2013) (black contours) on top of the ALMA continuum emission. The spirals as identified by Muto et al. (2012) are labeled as S1 and S2. **c.** PDI image of Garufi et al. (2013) in blue colors. In a and c, the white dashed ellipse indicates the 45 AU radius.

Alternative explanations for spiral arms in disks include RWI at the edge of a dead zone (Lyra et al., 2015), accretion from an envelope (Lesur et al., 2015) and gravitational instability (Lodato and Rice, 2004; Lodato et al., 2005; Rice et al., 2004), although estimated disk masses generally appear to be too low for them to be self-gravitating (Williams and Cieza, 2011).

A natural question is whether there is any relation between the spiral arms

observed in near-infrared scattered light (from the disk surface) and the structures seen in submillimeter emission (from the midplane). Although spiral features in submillimeter emission have been seen in two transition disks (Piétu et al., 2005; Christiaens et al., 2014), they are not entirely consistent with their near infrared counterparts. Juhász et al. (2015), Pohl et al. (2015), and Dong et al. (2015a) demonstrated that spirals generated by planet-disk interaction more likely results from changes in the vertical structure rather than the density structure, which are hard to detect in millimeter emission. On the other hand, spirals that form through gravitational instability can trap dust (Lodato and Rice, 2004; Dipierro et al., 2015a; Dong et al., 2015b), resulting in millimeter continuum spirals.

In this Letter we present Atacama Large Millimeter/submillimeter Array (ALMA) submillimeter continuum observations at very high spatial resolution of HD 135344B¹ (F4 star, $d \sim 140$ pc, ~ 8 Myr (van Boekel et al., 2005; Grady et al., 2009)), a well-studied transition disk at both optical and millimeter wavelengths. The HD 135344B disk contains a ~ 40 AU radius dust cavity (Brown et al., 2007, 2009; Andrews et al., 2011) with a minor azimuthal asymmetry along the dust ring (Pérez et al., 2014; Pinilla et al., 2015). CO observations and scattered light indicate that gas and small grains are present inside the cavity (Pontoppidan et al., 2008; Lyo et al., 2011; van der Marel et al., 2015b, 2016a; Garufi et al., 2013), consistent with a scenario where a massive planet at $\lesssim 30$ AU has cleared its orbit and trapped the large dust further out (Pinilla et al., 2012a). Scattered light imaging reveal two major spiral arms (Muto et al., 2012; Garufi et al., 2013; Stolker et al., 2016), proposed to be linked to planet-disk interaction, with planets located at 55 and 126 AU.

The new images presented in this letter show substructure in the millimeter emission to an unprecedented level, revealing a double structure, which may be responsible for triggering the spiral arms seen in the scattered light. This new interpretation has consequences for the implied location of the putative planets.

3.2 Observations

HD 135344B was observed in ALMA Cycle 1 program 2012.1.00158.S (PI van Dishoeck) in Band 7 (~ 335 GHz or $896 \mu\text{m}$) in the C32-5 configuration (20-800 m baselines), previously presented in van der Marel et al. (2016a) and Pinilla et al. (2015). The spectral settings and calibration are discussed in van der Marel et al. (2016a). For this work, the continuum emission is re-imaged using

¹also known as SAO 206462

superuniform rather than briggs weighting of the observed visibilities, resulting in a smaller beam size of $0.20 \times 0.16''$ (Figure 3.1a). In superuniform weighting, the weights of the grid cells in the u, v -plane are set inversely proportional to the sampling density function, minimizing the sidelobes over an arbitrary field size, whereas briggs weighting sets the weights also inversely proportional to the noise variance of each visibility. The peak S/N decreases from 210σ (briggs) to 120σ (superuniform) with σ the rms level ($0.25 \text{ mJy beam}^{-1}$). We also make use of archival data of HD135344B obtained in Polarization Differential Imaging (PDI) in the K_s band (~ 2.2 micron) (Garufi et al., 2013) with VLT/NACO. The data thus obtained trace the (polarized) scattered light from the disk surface and have angular resolution of $0.09''$.

Figure 3.1a reveals that the millimeter emission does not originate from a single dust ring with an azimuthal asymmetry, but an outer azimuthal asymmetric feature in the south (labeled F1) and an inner ring-like feature F2. With the current spatial resolution it remains unclear whether they are connected in the south-west. These features are located at 45 and 75 AU radius. The F1 feature is at least 4 times brighter than its opposite side in the north, while the F2 ring is almost azimuthally symmetric, with an azimuthal contrast of at most a factor 1.2. The peak brightness temperature is 20 K, implying that the emission is optically thick even at this wavelength ($896 \mu\text{m}$).

Figure 3.1b shows the overlay of the PDI image (multiplied by the squared distance to the central star) on top of the ALMA data. The ALMA features appear to follow the spiral structure: F1 is at the end of the spiral S1 (as defined in Muto et al. (2012)) while F2 appears to overlap with S2. The brightest part of the S1 spiral in the west is however not cospatial with the brightest ALMA data points, and as we will show below S1 and F1 are related in a different way.

In the modeling, we use the stellar position $15^h 15^m 48.^s 42 -37^\circ 09' 16.'' 36$) as derived from the ^{13}CO emission, and for the deprojection a position angle of 62° and an inclination of 16° (van der Marel et al., 2016a).

3.3 Morphology

In order to understand the morphology of the disk, two different models are investigated. Model 1 follows the spiral description derived by Muto et al. (2012). Model 2 consists of an inner symmetric ring and outer azimuthal asymmetry, following the morphology of the image. This double structure has been seen in certain 2D hydrodynamical simulations of planet disk interaction, with a primary vortex at the outer edge of the planetary gap and subsequently, a second vortex external to the primary (Lobo Gomes et al., 2015).

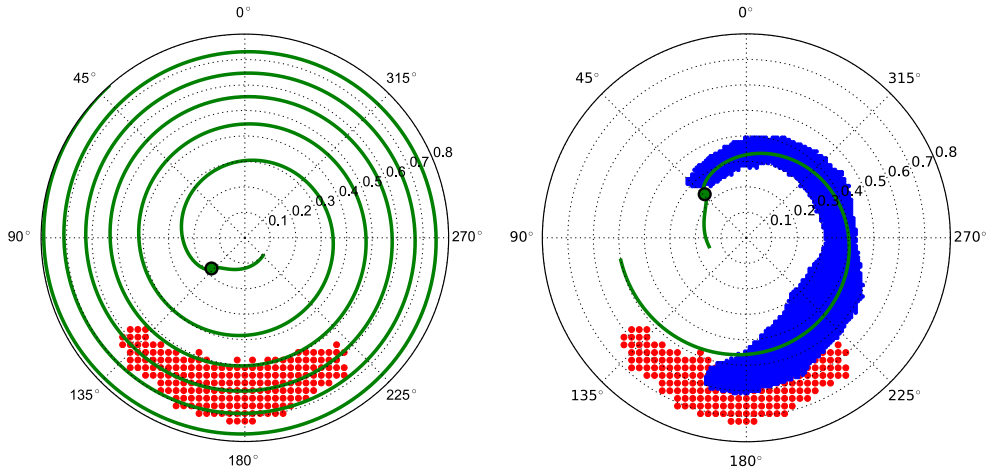


Figure 3.2: **Left.** Best fit of the ALMA continuum F1 feature (red dots) to the spiral model (green). This fit is unrealistic, as density waves are damped efficiently and the fourth winding would no longer be visible. **Right.** Overlay of the brightest data points of ALMA continuum (red dots) and the S1 feature in the scattered light data (blue dots, Garufi et al. (2013)), both deprojected. The green line shows our best-fit spiral to the blue data points, with $(r_c, \theta_0) = (0.24'', 134^\circ)$. This figure shows that F2 does not follow the spiral arm seen in scattered light.

3.3.1 The spiral model

We model the shape of a spiral density wave generated by a planet located at (r_c, θ_0) using the analytical shape derived by Rafikov, (2002). This analytical approach describes the propagation of the wave from a launching point and it is given by

$$\theta(r) = \theta_0 - \frac{\text{sgn}(r - r_c)}{h_c} \times \left[\left(\frac{r}{r_c} \right)^{1+\beta} \left\{ \frac{1}{1+\beta} - \frac{1}{1-\alpha+\beta} \left(\frac{r}{r_c} \right)^{-\alpha} \right\} - \left(\frac{1}{1+\beta} - \frac{1}{1-\alpha+\beta} \right) \right], \quad (3.1)$$

where h_c is the disk scale-height at $r = r_c$, disk angular velocity of $\Omega(r) \propto r^{-\alpha}$, and sound speed $c(r) \propto r^{-\beta}$. Equation (3.1) has been used to fit spiral arms observed in scattered light (Muto et al., (2012); Benisty et al., (2015)), although

the approximations assumed to derive Eq. 3.1 may fail for massive planets ($\gtrsim 1 M_{\text{Jup}}$, Zhu and Baruteau, 2016). This linear implementation results in 1 spiral for 1 planet, while in the non-linear case, one planet can generate one or more spirals (Zhu and Baruteau, 2016; Dong et al., 2015a).

For Model 1, we fit Eq. 3.1 to the position of the maxima of F2. For this purpose we select the pixels of the S1 arm, masking out the inner ring. We also set $\alpha = 1.5$ (Keplerian rotation), $\beta = 0.45$ (from the temperature profile in van der Marel et al., 2016a). The value of h_c is not well constrained by any model of the system, and at the radii of interest it ranges between 0.08 and 0.16 (e.g. Andrews et al., 2011; Carmona et al., 2014; van der Marel et al., 2016a). Therefore, we fix the scale-height value to the average $h_c = 0.12$, so only two free parameters remain for the fit: r_c and θ_0 , which characterize the launching position of the spiral.

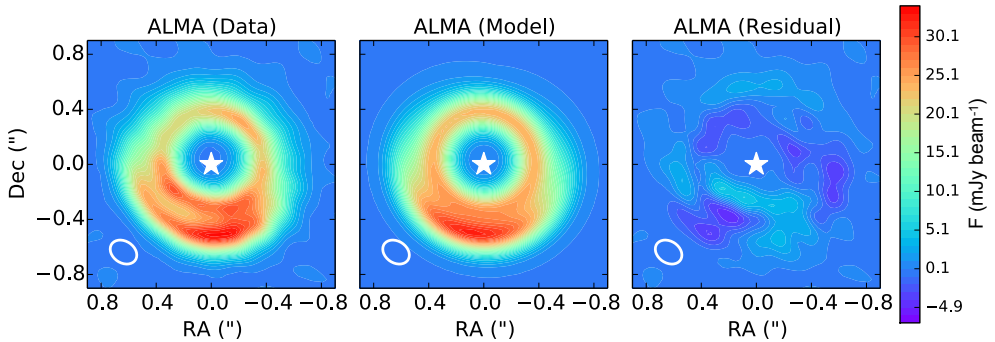


Figure 3.3: The best-fit model for a ring in combination with a vortex (2D Gaussian) for the ALMA continuum data. Modeling has been performed in the uv plane.

We adopt an Orthogonal Distance Regression fitting procedure, that searches for the curve that minimizes the sum of the distances to the data points orthogonally to the curve itself, thus assuming an observational error on both θ and r in Equation 3.1. We assume the uncertainty on the positions of the maxima to be equal to the FWHM of the beam. Finally, each data point is weighted proportional to the corresponding pixel intensity.

BE The fit in Figure 3.2 (left) shows that the F1 structure is mostly coradial and hence the spiral launching position has to be very close to the central star ($r_c < 0.2''$): the spiral pitch angle is close to 0° . In such a scenario, F1 would be part of the 4th spiral winding. However, the density waves after the first spiral winding are damped very efficiently due to the disk viscosity and pressure torque (Baruteau et al., 2014) and therefore this scenario is unrealistic to explain the observed azimuthal structure. Figure 3.2 (right) shows that the

ALMA continuum does not follow the best fit to the spiral arm in scattered light (blue dots).

3.3.2 The ring plus asymmetry model

Model 2 describes the structure as a combination of a ring (F2) with a azimuthal asymmetry (F1). This model assumes that the asymmetry may originate from a vortex, using the vortex prescription by Lyra and Lin (2013) of a Gaussian in the radial and azimuthal direction:

$$F(r, \theta) = F_v e^{-(r-r_v)^2/2\sigma_{r,v}^2} e^{-(\theta-\theta_v)^2/2\sigma_{\theta,v}^2}, \quad (3.2)$$

where F_v is the flux density at (r_v, θ_v) , r_v and θ_v (East of North) are the radial and azimuthal position of the asymmetry respectively, and $\sigma_{r,v}$ and $\sigma_{\theta,v}$ are the radial and azimuthal width of the asymmetry. F2, on the other hand, is modeled as a gaussian ring,

$$F(r, \theta) = F_r e^{-(r-r_r)^2/2\sigma_{r,r}^2}, \quad (3.3)$$

where F_r is the flux density at r_r , and where r_r and $\sigma_{r,r}$ are the radial position and width of the ring respectively.

Our model has therefore 8 free parameters (5 for the asymmetry and 3 for the ring model), and we fit it to the image using the MCMC python package `emcee`. The chains from the fit show good convergence for all the free parameters, and the best fit parameters are:

F_v	$1.44 \pm 1.6 \times 10^{-3}$ mJy/pixel
r_v	80.7 ± 0.005 AU ($0.58'' \pm 3.3'' \times 10^{-5}$)
$\sigma_{r,v}$	6.3 ± 0.008 AU ($0.045'' \pm 5.7'' \times 10^{-5}$)
θ_v	$172^\circ \pm 0.02^\circ$
$\sigma_{\theta,v}$	$57^\circ \pm 0.02^\circ$
F_r	$0.96 \pm 6.1 \times 10^{-4}$ mJy/pixel
r_r	51.3 ± 0.004 AU ($0.37'' \pm 2.8'' \times 10^{-5}$)
$\sigma_{r,r}$	8.1 ± 0.007 AU ($0.058'' \pm 4.8'' \times 10^{-5}$)

The errors from the MCMC calculations are much smaller than the spatial uncertainty from the observations, which is typically $\sim 10\%$ of the beam size (i.e. 2-3 AU). Figure 3.3 shows the comparison between the convolved model and the observations. The best fit was simulated onto the observed visibilities, and no significant differences were found with the convolved image. Some residuals are still present, mostly due to the asymmetry in the inner ring, but

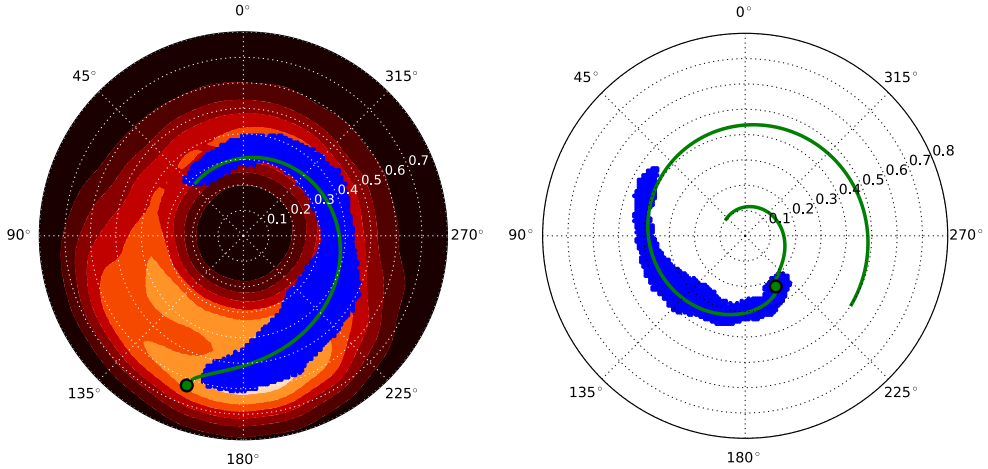


Figure 3.4: Left. Best fit for the S1 spiral in the scattered light data (deprojected), with a starting point inside the vortex. Overlaid on the ALMA image (colors), the blue dots indicate the data points of the PDI S1 feature with the central ring masked out, and the green line the best-fit spiral, with launching point $(r_c, \theta_0) = (0.62'', 170^\circ)$ marked as a circle. **Right.** Best fit for the S2 spiral, with a starting point in the inner part of the disk. The blue dots are the brightest points of the PDI S2 feature and the green line the best-fit spiral, with launching point $(r_c, \theta_0) = (0.23'', 211^\circ)$ marked as a circle.

at the 10% level of the original flux. The radius of the vortex is at a larger radius than found by earlier fitting of the millimeter data (Pérez et al., 2014; Pinilla et al., 2015), which could be due to their central position being 11 AU away from this study.

3.4 Discussion and conclusions

The F1 feature is not consistent with the spiral arm prescription, but it can be described as a ring (~ 50 AU) with an asymmetry at ~ 80 AU. Therefore we propose a new alternative scenario for this disk to explain the structure of both millimeter and scattered light data. The millimeter geometry is consistent with a model from Lobo Gomes et al., 2015, showing that a planet generates a pressure bump at 50 AU (F2), which triggers a second generation vortex at 80 AU (F1). The cavity radius of the gas and small grains (Garufi et al., 2013; van der Marel et al., 2016a) suggests the presence of a massive planet at 30 AU. A millimeter dust ring at 50 AU (F2) is consistent with this scenario, as the dust is trapped further out than the gas gap edge (Pinilla et al., 2012a).

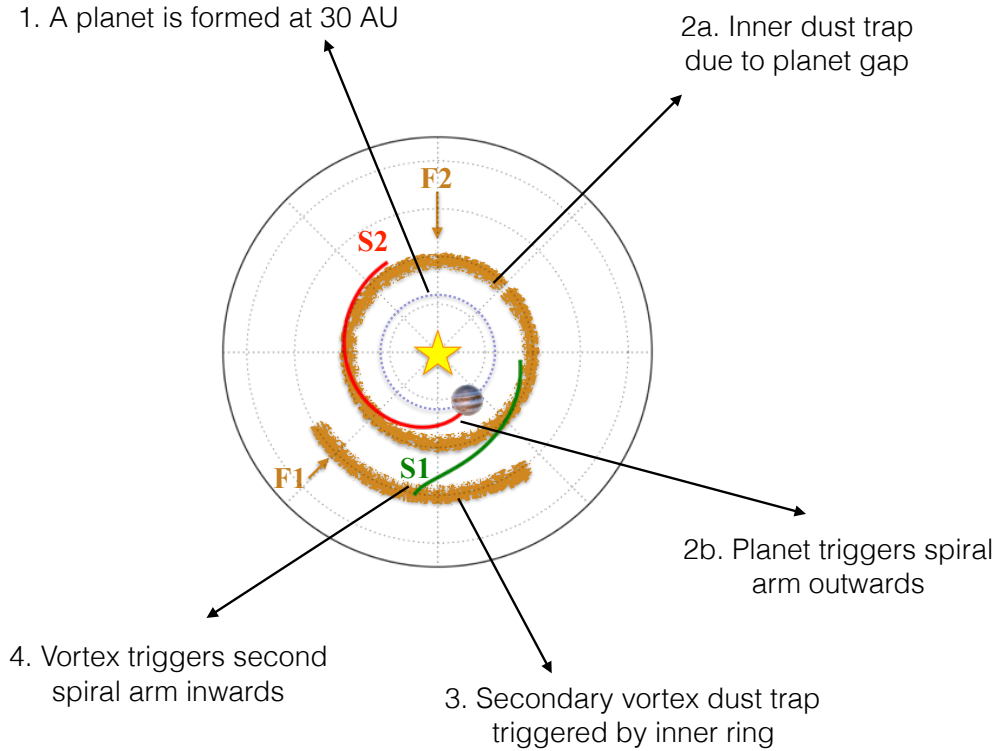


Figure 3.5: Cartoon explaining the proposed scenario.

The ALMA and PDI data trace different grain size populations and disk heights, possibly driven by different mechanisms. However, it is striking that F1 coincides with the edge of the S1 arm. We propose that the S1 is triggered by a vortex that has created the dust asymmetry F1, since vortices can be massive enough to launch their own density waves in a disk when self-gravity is included in hydrodynamical models (e.g. Baruteau and Zhu, 2016). Only a lower limit to the mass of the F1 feature can be set as the emission is partially optically thick: with a total flux of ~ 200 mJy and a ISM gas-to-dust ratio of 100, the total mass is $>16 M_{\text{Jup}}$ (using $M_{\text{gas}} = 0.08 * F_{\nu} (d/140\text{pc})^2 M_{\text{Jup}}$ Cieza et al., 2008). The outer extent of S1 (outside the vortex) remains undetectable in the PDI image due to the lower brightness in the outer disk.

Muto et al. (2012) find a best-fit for the launching point of S1 at $r_c = 0.39''$ (55 AU) at $\theta_0 = 204^\circ$, but with a large confidence interval (see Figure 5 in Muto et al.). Fitting the S1 spiral with an initial guess close to the center of the vortex results in the fit in Figure 3.4a with $r_c, \theta_0 = 0.6'', 180^\circ$ (84 AU) and

$h_c = 0.08$. This launching point does not coincide exactly with the center of F1, although there is a large uncertainty due to the unknown scale height at this location. Furthermore, ALMA continuum observations trace the mm-dust, whose center may not coincide with the gas vortex (Baruteau and Zhu, 2016), and the vortex can be a large scale structure where the center of mass may not be well represented by a single location, contrary to a planet.

On the other hand, the S2 spiral was best-fit by Muto et al. (2012) for $r_c, \theta_0 = 0.9''$ (126 AU), 353° , but we find that it can also be fit with a launching point in the inner part of the disk for $r_c, \theta_0 = 0.23''$ (32 AU), 211° (Figure 3.4b). The launching point of S2 would be a massive planet, just inside the gas cavity radius (van der Marel et al., 2016a). Stolker et al. (2016) finds a best fit for the S2 launching point to the VLT/SPHERE data slightly further in, at $r_c, \theta_0 = 0.15''$ (21 AU), 247° .

We propose that the combination of the scattered light and the millimeter observations is consistent with the following sequence of events (see Figure 3.5):

1. A massive planet is formed at ~ 30 AU radius.
2. The planet triggers a spiral density wave outwards (PDI S2 feature).
3. The planet clears its orbit in the gas (CO observations) and creates a radial pressure bump at its edge where millimeter-dust gets trapped (ALMA continuum F2 feature).
4. The pressure bump creates an effective α viscosity that is large enough to induce accretion, depleting the gas and inducing a second pressure bump further out. The second pressure bump triggers RWI, forms a vortex and traps the millimeter-dust asymmetrically (ALMA continuum F1 feature).
5. The outer vortex triggers a spiral density wave inwards (PDI S1 feature).

This scenario can potentially explain both PDI and millimeter observations. Hydrodynamical models of gas and dust, including self-gravity, are required to check whether our proposed scenario can instead quantitatively explain the observed structures of HD135344B.

One of the major uncertainties in the scenario are the fits to the locations of the launching points. The reason is that the scattered light data are mainly sensitive to changes in the scale height and therefore, the observed scattered light is significantly affected by geometric parameters. The observed spirals form only the illuminated inner part of a surface change. Also, the inner disk region may shadow the outer part and thus alter the intrinsic disk scale height

distribution. In particular, the azimuthal angle of the continuum ALMA feature coincides with the brighter part of the closer-in S2 spiral and therefore, S2 may be casting a shadow on part of S1, affecting the fit of the launching points.

Another caveat is the symmetry of the two spiral arms at the time of observation, suggesting a common nature such as proposed by Dong et al. (2015a) who demonstrates the trigger of two symmetric spiral arms by a single planet at 100 AU. As this planet has remained undetected, this scenario cannot be confirmed. On the other hand, if there are instead two launching points (32 and 86 AU), the two spirals would have distinct angular velocities and their symmetric appearance is fortuitous, making the scenario less probable. The orbital period of the 32 AU point is only 143 years, implying a $2.5^\circ/\text{year}$ angular shift. Repeating the scattered light observations in 5 years should clearly reveal the motion of this arm. If the asymmetry is indeed related to a vortex, an azimuthal shift of $\sim 0.1''$ (6°) in the millimeter continuum (measurable at $0.2''$ resolution) is detectable after 10 years.

The scenario is an example of triggered planet formation, where the formation of a first planet can induce dust growth and potentially further planet formation in the outer disk.

Acknowledgements. We are grateful to E.F. van Dishoeck, M. Tazzari, S. Facchini and T. Muto for useful discussions. NM is supported by the Beatrice Watson Parrent Fellowship. Astrochemistry in Leiden is supported by NOVA, KNAW and EU A-ERC grant 291141 CHEMPLAN. This paper makes use of the following ALMA data: ADS/JAO.ALMA/2012.1.00158.S. ALMA is a partnership of ESO (representing its member states), NSF (USA) and NINS (Japan), together with NRC (Canada) and NSC and ASIAA (Taiwan), in cooperation with the Republic of Chile. The Joint ALMA Observatory is operated by ESO, AUI/NRAO and NAOJ.