



Universiteit
Leiden
The Netherlands

Prediction of spatial-temporal brain drug distribution with a novel mathematical model

Vendel, E.

Citation

Vendel, E. (2019, December 17). *Prediction of spatial-temporal brain drug distribution with a novel mathematical model*. Retrieved from <https://hdl.handle.net/1887/81579>

Version: Publisher's Version

License: [Licence agreement concerning inclusion of doctoral thesis in the Institutional Repository of the University of Leiden](#)

Downloaded from: <https://hdl.handle.net/1887/81579>

Note: To cite this publication please use the final published version (if applicable).

Cover Page



Universiteit Leiden



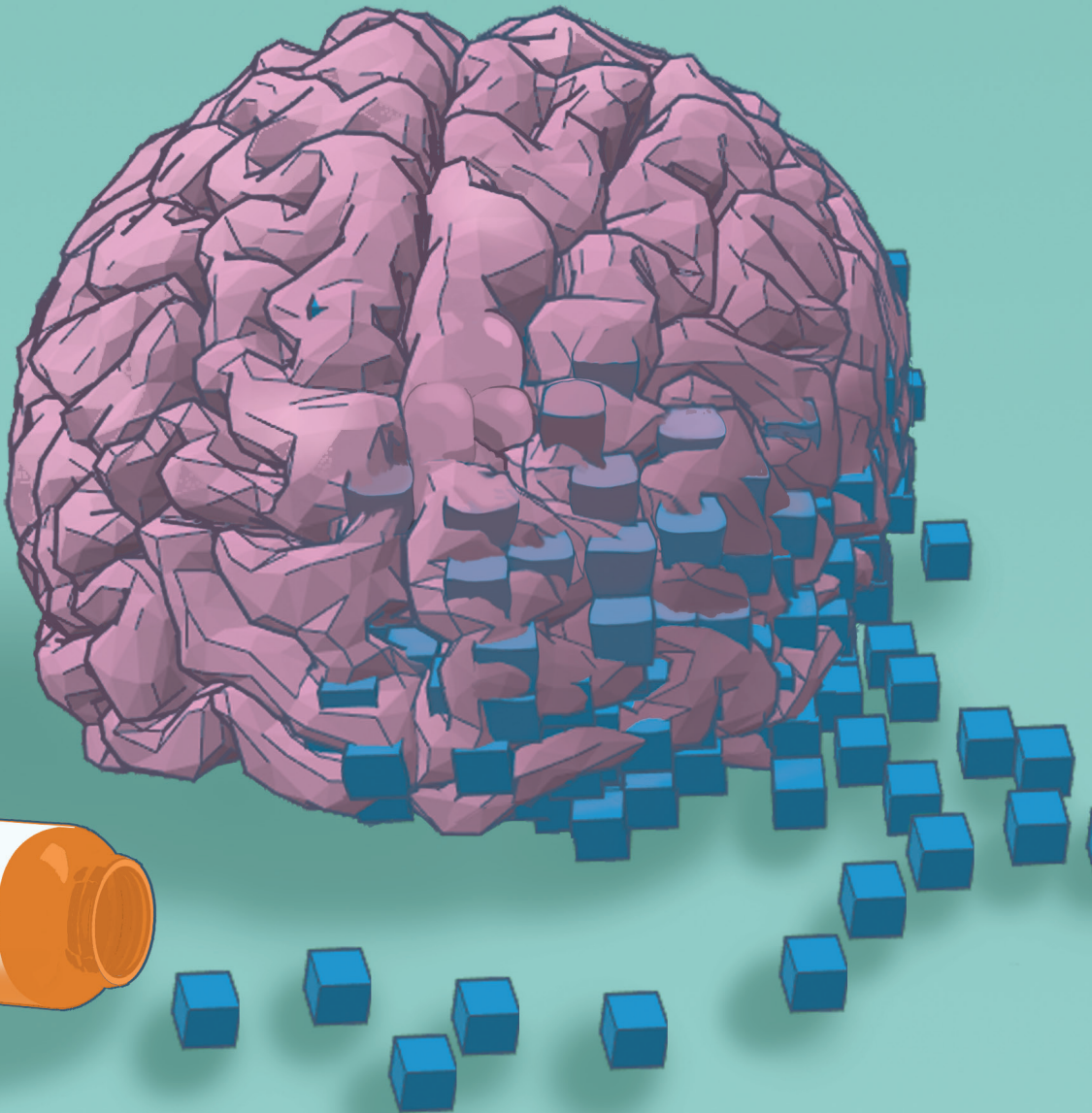
The following handle holds various files of this Leiden University dissertation:
<http://hdl.handle.net/1887/81579>

Author: Vendel, E.

Title: Prediction of spatial-temporal brain drug distribution with a novel mathematical model

Issue Date: 2019-12-17

Prediction of spatial-temporal brain drug distribution with a novel mathematical model



Esmée Vendel