



Universiteit  
Leiden  
The Netherlands

## **Classification and early detection of dementia and cognitive decline with magnetic resonance imaging**

Schouten, T.M.

### **Citation**

Schouten, T. M. (2019, September 18). *Classification and early detection of dementia and cognitive decline with magnetic resonance imaging*. Retrieved from <https://hdl.handle.net/1887/78450>

Version: Publisher's Version

License: [Licence agreement concerning inclusion of doctoral thesis in the Institutional Repository of the University of Leiden](#)

Downloaded from: <https://hdl.handle.net/1887/78450>

**Note:** To cite this publication please use the final published version (if applicable).

Cover Page



Universiteit Leiden



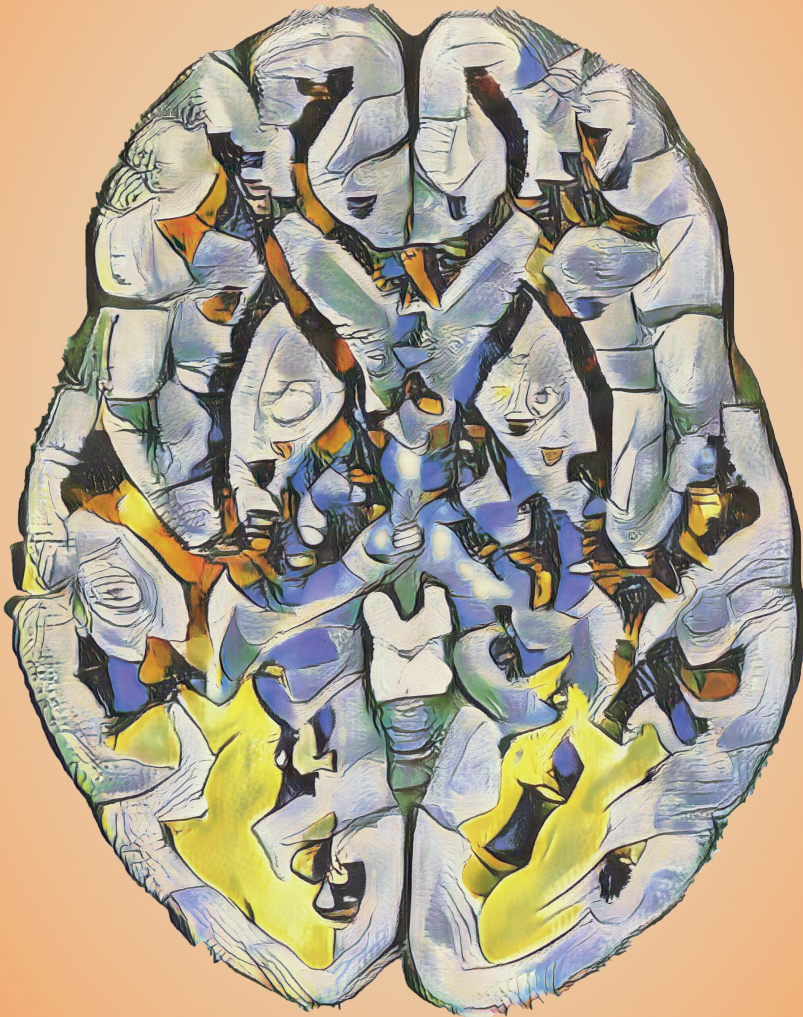
The handle <http://hdl.handle.net/1887/78450> holds various files of this Leiden University dissertation.

**Author:** Schouten, T.M.

**Title:** Classification and early detection of dementia and cognitive decline with magnetic resonance imaging

**Issue Date:** 2019-09-18

# Classification and early detection of dementia and cognitive decline with magnetic resonance imaging



Tijn Schouten



# Chennai Junction and Chennai Airport