



Universiteit
Leiden
The Netherlands

Familial Melanoma and Pancreatic Cancer: studies on genotype, phenotype and surveillance

Potjer, T.P.

Citation

Potjer, T. P. (2019, May 29). *Familial Melanoma and Pancreatic Cancer: studies on genotype, phenotype and surveillance*. Retrieved from <https://hdl.handle.net/1887/73760>

Version: Not Applicable (or Unknown)

License: [Leiden University Non-exclusive license](#)

Downloaded from: <https://hdl.handle.net/1887/73760>

Note: To cite this publication please use the final published version (if applicable).

Cover Page



Universiteit Leiden



The handle <http://hdl.handle.net/1887/73760> holds various files of this Leiden University dissertation.

Author: Potjer, T.P.

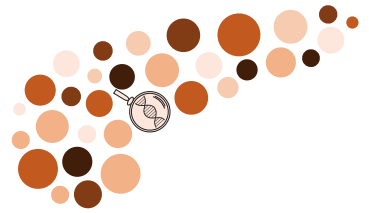
Title: Familial Melanoma and Pancreatic Cancer: studies on genotype, phenotype and surveillance

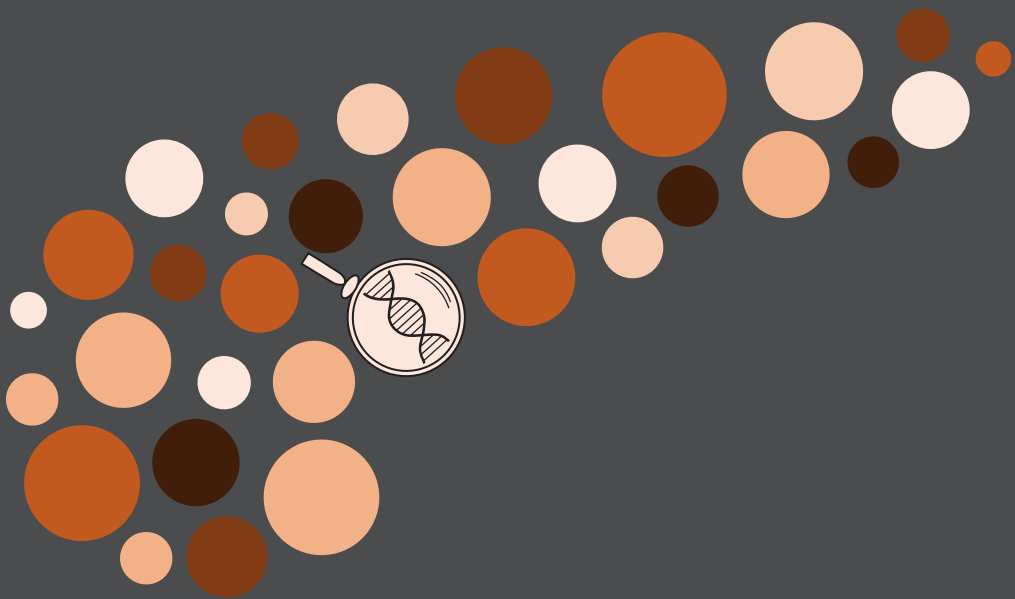
Issue Date: 2019-05-29

PART

II

Genetic testing in
familial melanoma;
CDKN2A and beyond





CM-Score:
A validated scoring
system to predict
CDKN2A germline
mutations in
melanoma families
from Northern Europe

J Med Genet. 2018;55(10):661-668

Thomas P. Potjer, Hildur Helgadóttir, Mirjam Leenheer, Nienke van der Stoep, Nelleke A. Gruis, Veronica Höiom, Håkan Olsson, Remco van Doorn, Hans F.A. Vasen, Christi J. van Asperen, Olaf M. Dekkers, Frederik J. Hes, on behalf of the Dutch Working Group for Clinical Oncogenetics

ABSTRACT

BACKGROUND

Several factors have been reported that influence the probability of a germline *CDKN2A* mutation in a melanoma family. Our goal was to create a scoring system to estimate this probability, based on a set of clinical features present in the patient and his or her family.

METHODS

Five clinical features and their association with *CDKN2A* mutations were investigated in a training cohort of 1227 Dutch melanoma families (13.7% with *CDKN2A* mutation) using multivariate logistic regression. Predefined features included number of family members with melanoma and with multiple primary melanomas, median age at diagnosis and presence of pancreatic cancer or upper airway cancer in a family member. Based on these five features, a scoring system (*CDKN2A Mutation (CM)-Score*) was developed and subsequently validated in a combined Swedish and Dutch familial melanoma cohort (n=421 families; 9.0% with *CDKN2A* mutation).

RESULTS

All five features were significantly associated ($p < 0.05$) with a *CDKN2A* mutation. At a CM-Score of 16 out of 49 possible points, the threshold of 10% mutation probability is approximated (9.9%; 95% CI 9.8-10.1). This probability further increased to >90% for families with ≥ 36 points. A CM-Score under 16 points was associated with a low mutation probability ($\leq 4\%$). CM-Score performed well in both the training cohort (AUC 0.89; 95% CI 0.86-0.92) and the external validation cohort (AUC 0.94; 95% CI 0.90-0.98).

CONCLUSION

We developed a practical scoring system to predict *CDKN2A* mutation status among melanoma-prone families. We suggest that *CDKN2A* analysis should be recommended to families with a CM-Score of ≥ 16 points.

INTRODUCTION

Since its identification in 1994,¹ the *CDKN2A* gene (MIM 600160) has remained the major high-risk susceptibility gene for cutaneous melanoma. Germline mutations are present in approximately 10-40% of familial cases.² Carriers of a germline mutation in the *CDKN2A* gene have an increased risk for developing melanoma, with a penetrance of up to 70% at 80 years of age, and 40% of carriers develop multiple primary cutaneous melanomas.³ Furthermore, mutation carriers have an increased risk for other types of malignancies, the most important of which is pancreatic cancer.⁴ Due to the high risk of melanomas and other types of cancer and the advantages of regular surveillance in improving prognosis and survival,^{5,6} it is important to identify families that carry a *CDKN2A* germline mutation. However, the probability of a *CDKN2A* mutation strongly depends both on the clinical characteristics of a family and personal (dermatological) and environmental factors such as skin type and the amount of sun exposure. Thus, *CDKN2A* mutation analysis might not be indicated in some lower-risk melanoma families.

The Netherlands and Sweden both have a high incidence of melanoma (age-standardized rate 19.4 and 18.0 per 100.000, respectively⁷) and specific founder mutations in the *CDKN2A* gene are the predominant cause of *familial* melanoma in these countries. In the Netherlands, the 19-base pair deletion termed p16-*Leiden* (c.225_243del, p.Ala76Cysfs*64; RefSeq NM_000077.4) not only confers an increased risk for melanoma but also for tumors of the pancreas and upper airway tract (larynx, pharynx, oral cavity), and to a lesser extent tumors of the lungs and digestive tract.⁸⁻¹⁰ Carriers of the Swedish founder mutation (c.335_337dup, p.Arg112dup; RefSeq NM_000077.4) also show an increased risk for these tumors.^{11,12} Although it is recognized that the risk-spectrum for non-melanoma cancers differs among carriers of different mutations in the *CDKN2A* gene, pancreatic and upper airway tract cancers have repeatedly been reported in a variety of carrier populations.^{4,13-17}

Over the past decade, research groups from Europe, the United States and Australia have attempted to identify clinical features that are associated with germline *CDKN2A* mutations in melanoma families.¹⁸⁻²⁴ Studied features included (1) number of melanoma patients in a family, (2) number of patients with multiple primary melanomas in a family, (3) median age at diagnosis of melanoma and (4) presence of pancreatic cancer in a family. The most significant associations reported in these studies were the presence of more than two melanoma cases in a family, an early age of onset, and having at least one family member with multiple primary melanomas and/or pancreatic cancer. Based on a literature review from 2009, it was suggested that melanoma patients from areas with a moderate to high incidence of melanoma are candidates for genetic testing of *CDKN2A* if they have at

least three primary melanomas, or when there are at least two additional diagnoses of melanoma and/or pancreatic cancer among close (first or second-degree) family members (“rule of threes”).²⁵ The authors argued that these families have an estimated 10% or greater probability of carrying a germline *CDKN2A* mutation, which is a commonly used threshold in clinical practice for gene sequencing in hereditary cancer.²⁶⁻²⁸

The goal of this study was to create a scoring system for clinicians to estimate the probability of a germline *CDKN2A* mutation based on a set of clinical features present in the patient and his or her family. Using a training cohort of Dutch melanoma families, we therefore analysed the association of four previously reported clinical features that are associated with a *CDKN2A* mutation, and investigated the association with upper airway cancer as an additional feature. A combined cohort of Swedish and Dutch melanoma families was used for external validation of the scoring system.

PATIENTS AND METHODS

TRAINING COHORT

The training cohort included all cutaneous melanoma index patients and their families in the Netherlands referred for *CDKN2A* mutation analysis between 1998 and 2015. According to current Dutch referral guidelines, *CDKN2A* mutation analysis is indicated if one of the following criteria is met: a family with 1) two first-degree relatives with melanoma, 2) two first or second-degree relatives with melanoma and one first or second-degree relative with pancreatic cancer, 3) three or more primary melanomas in one individual, 4) an individual with juvenile melanoma (< 18 years), or 5) an individual with a history of both melanoma and pancreatic cancer. At the Department of Clinical Genetics at Leiden University Medical Centre, the Laboratory for Diagnostic Genome Analysis (LDGA) has been the primary sequencing facility for *CDKN2A* in the Netherlands since 1998, and receives diagnostic requests from across the Netherlands. Essential pedigree information was gathered for the families and added to the Leiden Familial Melanoma Database. These data included the number of first and second-degree family members (of each other) with cutaneous melanoma (invasive or in situ), whether these patients had single or multiple primary melanomas (MPM), the age of each melanoma patient at first diagnosis and the number of family members with pancreatic cancer (PC) and upper airway cancer (UAC), i.e. cancer of larynx, pharynx or oral cavity. We restricted our analysis of these latter tumours to the first and second-degree relatives of the index patient and the first-degree relatives of melanoma patients. We relied on the referring clinical geneticists for complete pedigree information and, if necessary, histologic confirmation of cancer diagnoses (melanoma

and others). We included all information on cancer diagnoses, also those unconfirmed by the clinical geneticist, since index patient reports of melanomas in family members have a high known level of accuracy (true positive predictive value 77-87%).²⁹ We imputed the age of melanoma diagnosis for family members where the age at diagnosis was not reported in the pedigree (n=320 individuals from 212 families [61 with *CDKN2A* mutation]). Imputation was based on median age at diagnosis in *CDKN2A* mutation families (40 years) and sporadic (non-*CDKN2A*) patients (55 years), as reported by van der Rhee *et al.*³⁰ When the patient was younger than this age or was deceased prior to this age at time of *CDKN2A* analysis in the family, that specific age was used for imputation. Families without a *CDKN2A* mutation were excluded from the study if *CDKN2A* analysis was only performed in a non-affected family member (n=84). Families in which *CDKN2A* sequencing was unsuccessful were also excluded (n=4). The Leiden University Medical Centre Ethics Committee issued a declaration of no objection (#C14.064) regarding the creation of the Leiden Familial Melanoma Database.

VALIDATION COHORT

The greater portion of the validation cohort in this study consisted of members of melanoma-prone families from Sweden.³¹ Families were identified by questioning newly-diagnosed melanoma patients about their familial melanoma history. Melanoma families were defined as kindreds with at least two relatives (first, second or third-degree) with histologically or clinically verified melanoma. Since 1995, germline *CDKN2A* mutation analysis is offered to members of these families after informed consent is obtained. The study was approved by Research Ethical Review Boards at Lund University and Karolinska Institute in Stockholm, the sites where the genetic tests were performed. In Stockholm, patients with multiple primary melanomas (regardless of family history) are also invited to undergo germline *CDKN2A* mutation analysis. In 2012, a study was performed to broaden understanding of the identified familial melanoma kindreds and of multiple primary melanoma patients through linkage to Swedish national registries.^{11,12,32,33} Further linkage to the Swedish Cancer Registry (established in 1958 with register completeness estimated to be 96%)³⁴ provided data on all registered cancers in the *CDKN2A* genotyped individuals and their first and second-degree relatives.

Additional Dutch melanoma families were recruited at the Department of Dermatology, Leiden University Medical Centre, according to the inclusion criteria of the GenoMEL study (<http://www.genomel.org/>). After providing written informed consent, melanoma patients were asked about their familial melanoma history. A melanoma family was defined by the presence of three or more cases with histologically-confirmed melanoma, or two cases with histologically-confirmed melanoma in first-degree relatives.

DNA ANALYSIS

In the Dutch cohorts (both training and validation), DNA was extracted from whole blood samples of index patients and was used for sequencing of all coding exons of *CDKN2A* (1 α , 1 β , 2 and 3), including exon/intron boundaries. To detect larger deletions or duplications, multiplex ligation-dependent probe amplification (MPLA) was performed. In the early years of *CDKN2A* diagnostics, analysis was limited to a mutation-specific PCR for the detection of the p16-*Leiden* mutation. However, only a very small subset of *CDKN2A* wild type families in the training cohort were analysed in this manner (n=32). In an additional 89 families from the training cohort, exon 1 β was not sequenced. For the Swedish cohort, procedures used for PCR of all *CDKN2A* exons and direct sequencing of PCR products has been described previously.¹¹ Presence of a *CDKN2A* mutation was defined as having either a pathogenic or likely pathogenic variant in the *CDKN2A* gene (class 4 or 5 variant)³⁵ or an unclassified variant (class 3) shown to be located on a pathogenic *CDKN2A* haplotype. Classification of these variants was based on (previously reported) co-segregation with disease, strong evidence of impaired protein function, and in some families, shared pathogenic haplotypes.

STATISTICAL ANALYSIS

Five clinical features were predefined and used for analysis: the number of first and second-degree family members (including the index patient) with (1) melanoma and (2) multiple primary melanomas (MPM), (3) the median age at diagnosis of (first) melanoma in the family and the presence of (4) pancreatic cancer (PC) and (5) upper airway cancer (UAC) in a family. Median age at diagnosis was divided into three age groups (<30 years, 30-50 years and ≥ 50 years). A univariate analysis was performed to independently evaluate these features and a multivariate logistic regression model was used to assess the association between all five features and the presence of a germline *CDKN2A* mutation. The formula of the logistic regression model is $P(\text{probability}) = e^L / (1 + e^L)$ where $L = \text{constant} + \beta_1 * C_1$ (number of family members with melanoma [1=0, 2=1, 3=2, $\geq 4=3$]) + $\beta_2 * C_2$ (number of family members with MPM [0=0, 1=1, $\geq 2=2$]) + $\beta_3 * C_3$ (median age at primary diagnosis [$\geq 50=0$, $<50=1$]) + $\beta_4 * C_4$ (presence of PC [No=0, Yes=1]) + $\beta_5 * C_5$ (presence of UAC [No=0, Yes=1]), and where β is the feature-specific β -coefficient. All statistical analyses were carried out in SPSS (version 23.0).

DEVELOPMENT OF A SCORING SYSTEM: CM-SCORE

The β -coefficients derived from the multivariate analysis were converted to points for each feature using the formula $\text{Points} = (C_x * \beta_c) / B$ (as described by Sullivan *et al*,³⁶ where C_x is the feature-specific numeral from the logistic regression formula, β_c is the β -coefficient and B is the fixed multiplier or constant [defined 0.22]). The total number of points was calculated for each family in the training cohort. Since there were often considerable differences in

the number of families with successive point totals (for instance, there were 6 families with 21 points (33% mutation) and 37 families with 22 points (16% mutation)), the cohort was subsequently split into eight point-groups. This grouping would ensure a more accurate calculation of the observed mutation frequencies per group with narrower confidence intervals. For each of these groups, the observed mutation frequencies, the mean of the predicted probabilities and their 95% confidence intervals were calculated. The scoring system, CM- (*CDKN2A* Mutation) Score, was subsequently applied to the validation cohort, with the families split into the same point-groups as in the training cohort. The observed mutation frequencies and their 95% confidence intervals were again calculated for each group. The performance of the scoring system was assessed for both the training cohort and the validation cohort with the Hosmer-Lemeshow goodness of fit test (calibration) and Receiver Operator Characteristic (ROC) curve analysis with calculation of the Area Under the Curve (AUC) (discrimination). The slope of the calibration line was estimated with linear regression. The proposed cut-off value in CM-Score for performing *CDKN2A* analysis was determined as the score that corresponds to a predicted mutation probability of ~10%.²⁶⁻²⁸

RESULTS

TRAINING COHORT

A total of 1227 families were included in the study, 168 of which had a (likely) pathogenic variant in the *CDKN2A* gene (13.7%). The p16-*Leiden* founder mutation was present in 77% of these families (n=130) (*supplementary table S1*). Most of the families had two or more members with melanoma (853 families; 70%) and included 503 two-case families, 233 three-case families and 117 families with four or more melanoma cases. In 654 (77%) of these multiple-case families, at least one additional clinical feature was present (i.e. median age <50 years or presence of MPM, PC or UAC in the family, see *supplementary table S2*). In the 374 single-case families, 207 families (55%) had at least two other clinical features and 150 families (40%) had one other clinical feature. The majority of melanomas in the training cohort were confirmed by histology reports (76%). Pancreatic cancer and upper airway cancer diagnoses were less frequently confirmed by the referring clinical geneticist (both 43%).

UNIVARIATE AND MULTIVARIATE ANALYSIS

Having at least three family members with melanoma was significantly associated with the presence of a *CDKN2A* mutation in the univariate analysis (*table 1*). A median age of under 50 years and one or more cases with multiple melanomas in a family were also significantly associated with a *CDKN2A* mutation. Age under 30 years at time of diagnosis did not result in a higher odds ratio than age 30 to 50 years (OR 5.1 [95% CI 2.5-10.4] versus OR 7.1 [95%

CI 4.1-12.3], respectively). A significantly increased risk for a *CDKN2A* mutation was seen in families in which pancreatic cancer and upper airway cancer co-occurred with melanoma; a mutation was present in 33% of the families with one or more pancreatic cancer patients and 46% of the families with one or more upper airway cancer patients.

TABLE 1. Univariate analysis showing the independent association between each clinical feature and a germline *CDKN2A* mutation

Features	Total (n=1227)	<i>CDKN2A</i> wild type (n=1059)	<i>CDKN2A</i> mutation (n=168)	OR*	95% CI	P-Value
No. of family members with melanoma[†]						
1	374	346	28 (7.5%)	1.0	-	-
2	503	461	42 (8.3%)	1.1	0.7-1.9	0.641
3	233	194	39 (16.7%)	2.5	1.5-4.2	<0.001
≥4	117	58	59 (50.4%)	12.6	7.4-21.3	<0.001
No. of family members with MPM[‡]						
0	749	697	52 (6.9%)	1.0	-	-
1	406	329	77 (19.0%)	3.1	2.2-4.6	<0.001
≥2	72	33	39 (54.2%)	15.8	9.2-27.3	<0.001
Median age at primary diagnosis						
≥50 years	437	422	15 (3.4%)	1.0	-	-
30-50 years	666	532	134 (20.1%)	7.1	4.1-12.3	<0.001
<30 years	124	105	19 (15.3%)	5.1	2.5-10.4	<0.001
Presence of pancreatic cancer[‡]						
No	956	877	79 (8.3%)	1.0	-	-
Yes	271	182	89 (32.8%)	5.4	3.9-7.6	<0.001
Presence of upper airway cancer[‡]						
No	1117	999	118 (10.6%)	1.0	-	-
Yes	110	60	50 (45.5%)	7.1	4.6-10.7	<0.001

MPM = multiple primary melanomas, OR = odds ratio, CI = confidence interval

* The variable with the smallest risk was defined as baseline with an odds ratio of 1.0, and odds ratios for the other variables were calculated against this baseline value.

[†] First and second-degree relatives of each other; including the index patient

[‡] First and second-degree relatives of the index patient and first-degree relatives of melanoma patients

In a multivariate logistic regression model, the five features investigated in the univariate model remained significantly associated with a mutation (*table 2*). Since in the univariate analysis age under 30 years was not a stronger predictor than age 30 to 50 years, these age groups were combined into one group (age <50 years) for the multivariate analysis. The highest odds ratios were found for median age under 50 years (OR 8.5 [95% CI 4.5-

16.0]) and for presence of pancreatic or upper airway cancer in a family (OR 7.5; [95% CI 4.8-11.7] and OR 6.0 [95% CI 3.4-10.5], respectively), but these features had only two possible outcomes (<50 or ≥50 years, Yes or No), whereas the other melanoma-specific features had three or four possible outcomes and increasing odds ratios for each step.

TABLE 2. Multivariate logistic regression model showing the association between all five clinical features combined and a germline *CDKN2A* mutation

Clinical feature	β-coefficient	OR	95% CI	P-Value
No. of family members with melanoma (1, 2, 3, ≥4)	0.871	2.4	1.9-3.0	<0.001
No. of family members with MPM (0, 1, ≥2)	1.096	3.0	2.2-4.1	<0.001
Median age at primary diagnosis (≥50, <50)	2.142	8.5	4.5-16.0	<0.001
Presence of pancreatic cancer (No, Yes)	2.013	7.5	4.8-11.7	<0.001
Presence of upper airway cancer (No, Yes)	1.790	6.0	3.4-10.5	<0.001

MPM = multiple primary melanomas, *OR* = odds ratio, *CI* = confidence interval

The formula of the logistic regression model:

$P = e^L / (1 + e^L)$ where $L = -6.220 + 0.871 \times C_1$ (no. of family members with melanoma [1=0, 2=1, 3=2, ≥4=3]) + $1.096 \times C_2$ (no. of family members with MPM [0=0, 1=1, ≥2=2]) + $2.142 \times C_3$ (median age at primary diagnosis [≥50=0, <50=1]) + $2.013 \times C_4$ (presence of pancreatic cancer [No=0, Yes=1]) + $1.790 \times C_5$ (presence of upper airway cancer [No=0, Yes=1])

CM-SCORE

The points assigned to each clinical feature are shown in *table 3*. The predicted mutation probabilities and observed mutation frequencies per point-group are shown in *table 4*. Below a total of 16 of 49 possible points, the predicted mutation probability is low (≤4.0%). Between 16 and 19 points, the predicted mutation probability is 9.9% and substantially increases in subsequent point-groups (20-23 points: 20.9%, 24-27 points: 34.7%, 28-31 points: 52.1%, 32-35 points: 71.4%, ≥36 points: 90.7%).

The concordance between observed and predicted mutation probabilities (calibration) is graphically displayed in *figure 1A*. The slope of the calibration line (1.03) indicates a good calibration, and the Hosmer-Lemeshow test ($p=0.925$) provided no evidence of a poor fit. *Figure 2A* shows the ROC curve analysis. The AUC is 0.89 (95% CI 0.86-0.92, $p < 0.001$), which indicates that the model has a good ability to discriminate between families with and without a *CDKN2A* mutation. The threshold of 10% predicted probability is approximated at the cut-off value of 16 points in CM-Score, with a sensitivity of 90.5% (95% CI 84.7-94.2) and a specificity of 68.0% (95% CI 65.1-70.8). The majority of families ($n=736$; 60%) had a CM-Score of less than 16 points.

TABLE 3. Scoring system (CM-Score) based on the multivariate logistic regression model

Features	Points
No. of family members with melanoma[†]	
1	0
2	4
3	8
≥4	12
No. of family members with MPM[‡]	
0	0
1	5
≥2	10
Median age at primary diagnosis	
≥50 years	0
<50 years	10
Presence of pancreatic cancer^{*‡}	
No	0
Yes	9
Presence of upper airway cancer^{*‡}	
No	0
Yes	8

MPM = multiple primary melanomas

[†] First and second-degree relatives of each other; including the index patient

[‡] First and second-degree relatives of the index patient and first-degree relatives of melanoma patients

TABLE 4. Point totals from CM-Score with the corresponding mean predicted mutation probabilities and the observed mutation frequencies in the training and validation cohorts.

CM-Score	Predicted mutation probability		Observed mutation frequency					
	Points	Prob. (%)	95% CI	Training cohort (n=1227)			Validation cohort (n=421)	
Freq.				%	95% CI	Freq.	%	95% CI
≤11	1.0	0.9-1.0	4 / 383	1.0	0.4-2.7	0 / 159	0	0.0-2.4
12 – 15	4.0	3.9-4.1	12 / 353	3.4	2.0-5.9	4 / 166	2.4	0.9-6.0
16 – 19	9.9	9.8-10.1	26 / 203	12.8	8.9-18.1	4 / 38	10.5	4.2-24.1
20 – 23	20.9	20.4-21.4	18 / 99	18.2	11.8-26.9	1 / 17	5.9	1.1-27.0
24 – 27	34.7	33.1-36.3	23 / 75	30.7	21.4-41.8	4 / 12	33.3	13.8-60.9
28 – 31	52.1	49.4-54.7	16 / 32	50.0	33.6-66.4	4 / 6	66.7	30.0-90.3
32 – 35	71.4	69.6-73.1	30 / 40	75.0	59.8-85.8	5 / 7	71.4	35.9-91.8
≥36	90.7	89.0-92.4	39 / 42	92.9	81.0-97.5	16 / 16	100	80.6-100.0

The predicted mutation probability for each point-group is the mean of the predicted probabilities of the point totals in that group in the training cohort. The corresponding 95% confidence interval is estimated using the standard error of the mean.

Prob = probability, Freq = frequency, CI = confidence interval

EXTERNAL VALIDATION OF THE SCORING SYSTEM

The validation cohort consisted of a total of 421 families (403 from Sweden; 18 from the Netherlands), of which 38 had a (likely) pathogenic variant in the *CDKN2A* gene (9.0%). Most of these families ($n=30$; 79%) carried the Swedish founder mutation p.Arg112dup and two Dutch families carried the p16-*Leiden* founder mutation (*supplementary table S3*). The majority were multiple-case families (294 families; 70%) and included 232 two-case families, 37 three-case families and 25 families with four or more cases. All melanomas in the validation cohort were histologically confirmed. Pancreatic cancer was present in 29 families (28 histologically confirmed; 72% *CDKN2A* mutation) and upper airway cancer in 24 families (23 histologically confirmed; 63% *CDKN2A* mutation).

The observed mutation frequencies per point-group in the validation cohort are shown in *table 4*. The performance of CM-Score in the validation cohort is displayed in *figures 1B* and *2B*. The slope of the calibration line is 1.14 with a non-significant Hosmer-Lemeshow test ($p=0.615$). The AUC is 0.94 (95% CI 0.90-0.98, $p<0.001$), indicating good performance of CM-Score in the validation cohort. The sensitivity and specificity at the cut-off value of 16 points is 89.5% (95% CI 74.3-96.6) and 83.8% (95% CI 79.6-87.3), respectively. Similar to the training cohort, the majority of families in the validation cohort ($n=325$; 77%) had a CM-Score of less than 16 points.

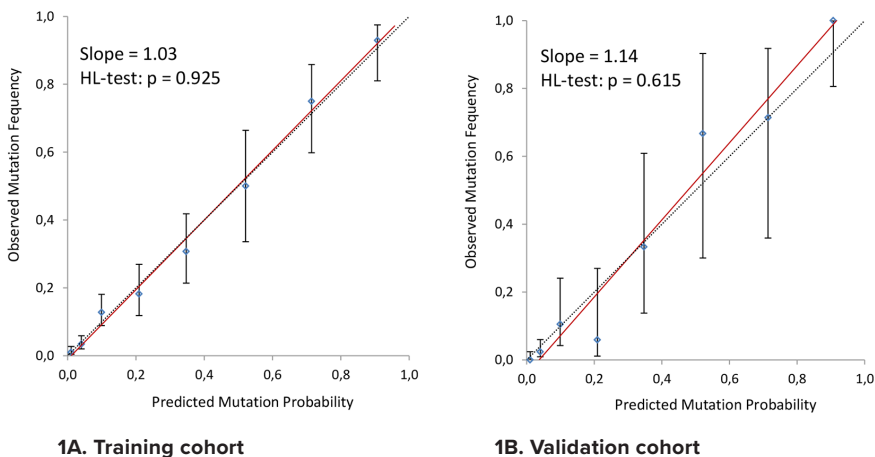


FIGURE 1. Calibration of CM-Score

The calibration line (red) is a linear regression line that shows the relation between observed mutation frequency and predicted mutation probability in the training cohort (A) and the validation cohort (B). The dashed line is the reference line of perfect calibration. The 95% confidence intervals of the observed mutation frequencies per point-group are displayed by the vertical lines.

HL-test = Hosmer-Lemeshow test

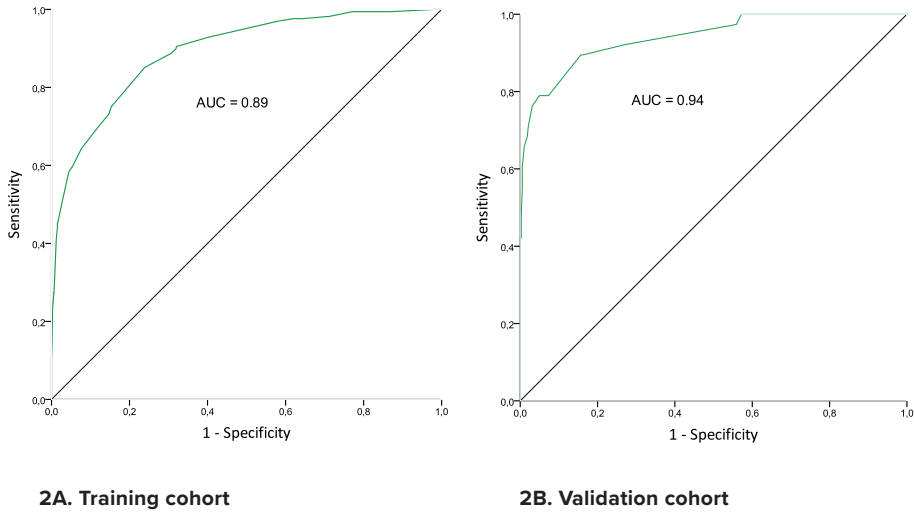


FIGURE 2. Discriminative ability of CM-Score

Receiver Operator Characteristic (ROC) curve analysis of the training cohort (A) and the validation cohort (B). Point total was used as the test variable and mutation status was used as the state variable. Comparable results were obtained when the calculated predicted probability was used as test variable.

AUC = Area Under the Curve

DISCUSSION

This study in a large Dutch training cohort of 1227 melanoma families confirmed the importance of four previously established clinical features that are associated with the presence of a germline *CDKN2A* mutation in a melanoma patient. Furthermore, a fifth feature, the presence of upper airway cancer in the family, could be validated. Based on these clinical features and their odds ratios in our multivariate logistic regression model, we developed the CM-Score system to predict *CDKN2A* mutation probability, which performed very well in a combined Swedish and Dutch external validation cohort (AUC 0.94). At a cut-off value of 16 out of 49 points, the predicted probability approximates the commonly used 10% predicted probability threshold for germline gene sequencing in hereditary cancer, with a sensitivity of 89% and a specificity of 84% in the validation cohort. This cut-off value is also clinically relevant, since the majority of families in the training and validation cohorts scored less than 16 points (60% and 77%, respectively), a threshold below which the probability of a mutation decreases substantially ($\leq 4\%$). Use of CM-Score could potentially spare many families (extensive) genetic testing, which may be particularly

relevant in countries where resources for genetic testing are limited. Conversely, in families with a high CM-Score and therefore high mutation probability, genetic testing is even more urgent. A scoring system should, however, always only complement the clinical judgment of the clinical geneticist requesting DNA diagnostics (for instance taking into account family size, age of family members, whether a patient has a certain combination of different malignancies and the availability of reliable medical information).

Risk models involving melanoma³⁷ and *CDKN2A* mutation probability^{23,24} have been described previously. Niendorf *et al* incorporated the features (1) number of primary proband melanomas, (2) number of primary melanomas in the family and (3) age in a logistic regression model they named MELPREDICT.²³ The AUC was 0.881 in the training set (n=116 families) and 0.803 in the external validation set (n=143 families). A computerized optimization of this model, renamed MelaPRO, was published in 2010, and outperformed the former model with an AUC of 0.86 in a validation set of 167 families.²⁴ MelaPRO includes the same clinical (familial) features as MELPREDICT, but also takes into account regional melanoma incidence rates and the geographical penetrance of *CDKN2A*. In contrast, while our CM-Score was trained and validated using families of Northern European descent, its strength lies in its simple, non-computerized scoring system that incorporates five features (including the presence of pancreatic cancer and upper airway cancer in a family), and despite this simplicity shows a superior performance in very large sets of melanoma-prone families.

The guidelines for *CDKN2A* mutation testing proposed by Leachman *et al* in 2009²⁵ were recently updated.³⁸ In view of the recent reports of non-*CDKN2A* melanoma syndromes, such as those related to germline mutations in *BAP1*³⁹ (MIM 603089), *POT1*⁴⁰ (MIM 606478) and *MITF*⁴¹ (MIM 156845), the authors propose tailored multi-gene panel testing in melanoma families instead of *CDKN2A* mutation testing alone. The 2009 criteria for genetic testing were converted into a points system, with points awarded for cancers that occur in so-called melanoma-dominant syndromes and melanoma-subordinate syndromes (where melanoma is not the predominant cancer type, such as in hereditary breast and ovarian cancer). Based on these points, the clinical geneticist can subsequently select the appropriate gene panel(s) to be tested in a family. In the selection and genetic assessment of melanoma families, this is a rather different approach to the one we propose in the current study. Firstly, CM-Score is designed for families where melanoma is the predominant cancer type. Secondly, since *CDKN2A* is still by far the major susceptibility gene in familial melanoma, we based the selection of families for genetic assessment on the probability of specifically detecting a *CDKN2A* mutation in these families. Because other melanoma-dominant syndromes (such as those related to *BAP1*, *POT1*, *CDK4* and *MITF*) are very

rare compared to *CDKN2A*-related familial melanoma (each gene contributing <1%),⁴² we hypothesize that the calculated mutation probability from CM-Score largely reflects the joint probability of detecting a germline *CDKN2A* mutation and other rare melanoma-dominant mutations. However, it should be noted that some tumors that are not part of CM-Score are highly specific to non-*CDKN2A* melanoma syndromes, especially *BAP1*-related tumors such as uveal melanoma and mesothelioma.^{43,44} *BAP1* germline analysis should therefore be specifically offered when these tumors co-occur with cutaneous melanoma in a family, either together with *CDKN2A* or as part of a multi-gene panel test. It is not within the scope of this study to elaborate on the choice between multi-gene panel testing and *CDKN2A* mutation testing alone in melanoma-prone families. Although multi-gene panel testing increases the detection rate of cancer-predisposing germline mutations, there is also an elevated risk of identifying a variant of unknown significance in one of the genes and therefore increasing the uncertainty for a family regarding their genetic risk. The chance of this happening increases as more genes are included in a panel or when multiple panels are considered. Pros and cons of multi-gene panel testing should therefore always be carefully discussed with the patient.

Strengths of our study include relatively large and homogeneous cohorts and the broad analysis of five clinical features, including one more recently described feature (i.e. upper airway cancer). However, because the scoring system is based on populations with a high melanoma incidence, it is possible that it will underestimate the probability of finding a *CDKN2A* mutation in lower melanoma incidence areas such as Southern (Mediterranean) Europe or overestimate the probability in extreme incidence areas such as Australia. Additional validation in other geographical areas would therefore be valuable. Another limitation of our study is information bias. In the training cohort we had to rely on information supplied by the referring clinical geneticists and not all melanoma diagnoses were therefore histologically confirmed (76%). However, since the reporting of additional melanomas in family members by the index patient is known to be highly accurate, this factor is unlikely to have influenced the results.²⁹ Unfortunately, only 43% of all pancreatic tumors and 43% of all upper airway tumors were confirmed. Nevertheless, all melanomas and other cancers in the validation cohort were verified since the majority of diagnoses were derived from the Swedish Cancer registry.

In conclusion, we have developed and validated a non-computerized and clinically easy-to-use scoring system that shows high utility in predicting the probability of a germline *CDKN2A* mutation in melanoma-prone families from Northern Europe. The scoring system is based on clinical information on melanoma diagnoses in the patient's family, and additionally includes diagnoses of pancreatic and upper airway cancer. As CM-Score was

trained and validated in large sets of Northern European families, we suggest that the system should be further validated in other regions as well. In view of the 10% mutation probability threshold, we suggest that *CDKN2A* analysis should be recommended to families with a CM-Score of ≥ 16 points.

ACKNOWLEDGEMENTS

We are indebted to the participating families, whose generosity and cooperation have made this study possible. We acknowledge the contributions to this work made by Diana Lindén, Lena Westerberg, Anita Schmidt-Zander, Rainer Tuominen and Johan Hansson. This research was supported by the Dutch Cancer Society (UL 2015-7511 and UL 2012-5489); The Swedish Cancer Society (CAN 2013/637, CAN 2014/851 and CAN 2015/283); Genomel (LSHC-CT-2006–018702); ERC advanced grant 2011 (291576); The Radiumhemmet Research Funds (144073); and Regional Funds and Hospital Funds in Lund and Stockholm.

COLLABORATORS

Dutch Working Group for Clinical Oncogenetics: A. Wagner, L. van der Kolk, M. Ausems, Th. Van Os, E.M. Leter, L. Spruijt, K. van Engelen, L. Berger

REFERENCES

1. Hussussian CJ, Struewing JP, Goldstein AM, et al: Germline p16 mutations in familial melanoma. *Nat Genet* 8:15-21, 1994
2. Read J, Wadt KA, Hayward NK: Melanoma genetics. *J Med Genet* 53:1-14, 2016
3. Bishop DT, Demenais F, Goldstein AM, et al: Geographical variation in the penetrance of CDKN2A mutations for melanoma. *J Natl Cancer Inst* 94:894-903, 2002
4. Goldstein AM, Chan M, Harland M, et al: High-risk melanoma susceptibility genes and pancreatic cancer, neural system tumors, and uveal melanoma across GenoMEL. *Cancer Res* 66:9818-28, 2006
5. van der Rhee JI, de Snoo FA, Vasen HF, et al: Effectiveness and causes for failure of surveillance of CDKN2A-mutated melanoma families. *J Am Acad Dermatol* 65:289-96, 2011
6. Vasen H, Ibrahim I, Ponce CG, et al: Benefit of Surveillance for Pancreatic Cancer in High-Risk Individuals: Outcome of Long-Term Prospective Follow-Up Studies From Three European Expert Centers. *J Clin Oncol* 34:2010-9, 2016
7. Ferlay J SI, Ervik M, Dikshit R, Eser S, Mathers C, Rebelo M, Parkin DM, Forman D, Bray, F.: GLOBOCAN 2012 v1.0, Cancer Incidence and Mortality Worldwide: IARC CancerBase No. 11 [Internet]. Lyon, France, International Agency for Research on Cancer, 2013. Available from: <http://globocan.iarc.fr>, accessed on July 2017.
8. Vasen HF, Gruis NA, Frants RR, et al: Risk of developing pancreatic cancer in families with familial atypical multiple mole melanoma associated with a specific 19 deletion of p16 (p16-Leiden). *Int J Cancer* 87:809-11, 2000
9. de Snoo FA, Bishop DT, Bergman W, et al: Increased risk of cancer other than melanoma in CDKN2A founder mutation (p16-Leiden)-positive melanoma families. *Clin Cancer Res* 14:7151-7, 2008
10. Potjer TP, Kranenburg HE, Bergman W, et al: Prospective risk of cancer and the influence of tobacco use in carriers of the p16-Leiden germline variant. *Eur J Hum Genet* 23:711-4, 2015
11. Helgadottir H, Hoiom V, Jonsson G, et al: High risk of tobacco-related cancers in CDKN2A mutation-positive melanoma families. *J Med Genet* 51:545-52, 2014
12. Helgadottir H, Hoiom V, Tuominen R, et al: CDKN2a mutation-negative melanoma families have increased risk exclusively for skin cancers but not for other malignancies. *Int J Cancer* 137:2220-6, 2015
13. Goldstein AM: Familial melanoma, pancreatic cancer and germline CDKN2A mutations. *Hum Mutat* 23:630, 2004
14. Mukherjee B, Delancey JO, Raskin L, et al: Risk of non-melanoma cancers in first-degree relatives of CDKN2A mutation carriers. *J Natl Cancer Inst* 104:953-6, 2012
15. Goldstein AM, Stacey SN, Olafsson JH, et al: CDKN2A mutations and melanoma risk in the Icelandic population. *J Med Genet* 45:284-9, 2008
16. Vinarsky V, Fine RL, Assaad A, et al: Head and neck squamous cell carcinoma in FAMMM syndrome. *Head Neck* 31:1524-7, 2009

17. Cabanillas R, Astudillo A, Valle M, et al: Novel germline *CDKN2A* mutation associated with head and neck squamous cell carcinomas and melanomas. *Head Neck* 35:E80-4, 2013
18. Goldstein AM, Chan M, Harland M, et al: Features associated with germline *CDKN2A* mutations: a GenoMEL study of melanoma-prone families from three continents. *J Med Genet* 44:99-106, 2007
19. Pedace L, De Simone P, Castori M, et al: Clinical features predicting identification of *CDKN2A* mutations in Italian patients with familial cutaneous melanoma. *Cancer Epidemiol* 35:e116-20, 2011
20. Maubec E, Chaudru V, Mohamdi H, et al: Familial melanoma: clinical factors associated with germline *CDKN2A* mutations according to the number of patients affected by melanoma in a family. *J Am Acad Dermatol* 67:1257-64, 2012
21. Harland M, Cust AE, Badenas C, et al: Prevalence and predictors of germline *CDKN2A* mutations for melanoma cases from Australia, Spain and the United Kingdom. *Hered Cancer Clin Pract* 12:20, 2014
22. Yang XR, Rotunno M, Xiao Y, et al: Multiple rare variants in high-risk pancreatic cancer-related genes may increase risk for pancreatic cancer in a subset of patients with and without germline *CDKN2A* mutations. *Hum Genet* 135:1241-1249, 2016
23. Niendorf KB, Goggins W, Yang G, et al: MELPREDICT: a logistic regression model to estimate *CDKN2A* carrier probability. *J Med Genet* 43:501-6, 2006
24. Wang W, Niendorf KB, Patel D, et al: Estimating *CDKN2A* carrier probability and personalizing cancer risk assessments in hereditary melanoma using MelaPRO. *Cancer Res* 70:552-9, 2010
25. Leachman SA, Carucci J, Kohlmann W, et al: Selection criteria for genetic assessment of patients with familial melanoma. *J Am Acad Dermatol* 61:677 e1-14, 2009
26. Statement of the American Society of Clinical Oncology: genetic testing for cancer susceptibility, Adopted on February 20, 1996. *J Clin Oncol* 14:1730-6; discussion 1737-40, 1996
27. National Institute for Health and Clinical Excellence: Familial Breast Cancer: Classification and Care of People at Risk of Familial Breast Cancer and Management of Breast Cancer and Related Risks in People with a Family History of Breast Cancer: NICE guidelines, National Collaborating Centre for Cancer (UK), 2013
28. Evans DG, Harkness EF, Plaskocinska I, et al: Pathology update to the Manchester Scoring System based on testing in over 4000 families. *J Med Genet* 54:674-681, 2017
29. Wadt KA, Drzewiecki KT, Gerdes AM: High accuracy of family history of melanoma in Danish melanoma cases. *Fam Cancer* 14:609-13, 2015
30. van der Rhee JI, Krijnen P, Gruis NA, et al: Clinical and histologic characteristics of malignant melanoma in families with a germline mutation in *CDKN2A*. *J Am Acad Dermatol* 65:281-8, 2011
31. Hansson J, Bergenmar M, Hofer PA, et al: Monitoring of kindreds with hereditary predisposition for cutaneous melanoma and dysplastic nevus syndrome: results of a Swedish preventive program. *J Clin Oncol* 25:2819-24, 2007
32. Helgadottir H, Tuominen R, Olsson H, et al: Cancer risks and survival in patients with multiple primary

- melanomas: Association with family history of melanoma and germline CDKN2A mutation status. *J Am Acad Dermatol* 77:893-901, 2017
33. Department of Population and Welfare Statistics: Multigeneration register 2011. A description of contents and quality. Örebro, Sweden: Statistics Sweden; , 2012:2. Available at: http://www.scb.se/statistik/_publikationer/BE9999_2011A01_BR_BE96BR1202.pdf.
 34. Socialstyrelsen (The National Board of Health and Welfare): The Swedish Cancer Registry. 2015. Available at: <http://www.socialstyrelsen.se/register/halsodataregister/cancerregistret/inenglish>.
 35. Plon SE, Eccles DM, Easton D, et al: Sequence variant classification and reporting: recommendations for improving the interpretation of cancer susceptibility genetic test results. *Hum Mutat* 29:1282-91, 2008
 36. Sullivan LM, Massaro JM, D'Agostino RB, Sr.: Presentation of multivariate data for clinical use: The Framingham Study risk score functions. *Stat Med* 23:1631-60, 2004
 37. Davies JR, Chang YM, Bishop DT, et al: Development and validation of a melanoma risk score based on pooled data from 16 case-control studies. *Cancer Epidemiol Biomarkers Prev* 24:817-24, 2015
 38. Leachman SA, Lucero OM, Sampson JE, et al: Identification, genetic testing, and management of hereditary melanoma. *Cancer Metastasis Rev* 36:77-90, 2017
 39. Wiesner T, Obenauf AC, Murali R, et al: Germline mutations in BAP1 predispose to melanocytic tumors. *Nat Genet* 43:1018-21, 2011
 40. Robles-Espinoza CD, Harland M, Ramsay AJ, et al: POT1 loss-of-function variants predispose to familial melanoma. *Nat Genet* 46:478-481, 2014
 41. Bertolotto C, Lesueur F, Giuliano S, et al: A SUMOylation-defective MITF germline mutation predisposes to melanoma and renal carcinoma. *Nature* 480:94-8, 2011
 42. Aoude LG, Wadt KA, Pritchard AL, et al: Genetics of familial melanoma: 20 years after CDKN2A. *Pigment Cell Melanoma Res* 28:148-60, 2015
 43. Abdel-Rahman MH, Pilarski R, Cebulla CM, et al: Germline BAP1 mutation predisposes to uveal melanoma, lung adenocarcinoma, meningioma, and other cancers. *J Med Genet* 48:856-9, 2011
 44. Testa JR, Cheung M, Pei J, et al: Germline BAP1 mutations predispose to malignant mesothelioma. *Nat Genet* 43:1022-5, 2011

SUPPLEMENTARY MATERIAL

SUPPLEMENTARY TABLE S1. Spectrum of (likely) pathogenic *CDKN2A* variants and variants of uncertain significance located on a pathogenic haplotype in Dutch melanoma families (training cohort)

	<i>CDKN2A</i> nucleotide change [‡]	p16INK4a amino acid change	p14ARF amino acid change	No. of families
5' UTR	c.-34 G>T	p.?	None	4
Exon 1β [†]	c.193+1G>A	None	p.?	5
	c.193G>C	None	p.Gly65Arg	4
Exon 1α	c.47T>G	p.Leu16Arg	None	2 [§]
	c.67G>C	p.Gly23Arg	None	8 [§]
	c.71G>C	p.Arg24Pro	None	2
	c.131_132insAA	p.Tyr44*	None	1
	c.143C>A	p.Pro48Gln	None	1
Exon 2	c.151-2A>G	p.?	p.?	1
	c.159G>A	p.Met53Ile	p.Asp68Asn	2
	c.203C>T	p.Ala68Val	p.Arg82Arg	2 [§]
	c.225_243del [†]	p.Ala76Cysfs*64	p.Arg90Valfs*76	130
	c.301G>T	p.Gly101Trp	p.Arg115Leu	2
	c.352G>A	p.Ala118Thr	p.Gly132Asp	3 [§]
Exon 1+2+3	Deletion 155 kb of <i>CDKN2A</i> , <i>CDKN2B</i> and <i>MTAP</i>	Whole gene deletion	Whole gene deletion	1
Total				168

‡ RefSeq NM_000077.4 isoform p16INK4a

† RefSeq NM_058195.3 isoform p14ARF

* p16-*Leiden*. Dutch founder mutation

§ located on pathogenic haplotype

SUPPLEMENTARY TABLE S2. Clinical characteristics of families in the training cohort

No. of features	≥2 members with melanoma	Presence of MPM	Median age at primary diagnosis <50 years	Presence of PC	Presence of UAC	No. of families
5	+	+	+	+	+	18
4	+	+	+	+	-	42
	+	+	+	-	+	15
	+	+	-	+	+	1
	+	-	+	+	+	5
	-	+	+	+	+	4
						67
3	+	+	+	-	-	129
	+	+	-	+	-	17
	+	+	-	-	+	4
	+	-	+	+	-	30
	+	-	+	-	+	22
	+	-	-	+	+	4
	-	+	+	+	-	23
	-	+	+	-	+	6
	-	+	-	+	+	0
	-	-	+	+	+	8
						243
2	+	+	-	-	-	69
	+	-	+	-	-	260
	+	-	-	+	-	32
	+	-	-	-	+	6
	-	+	+	-	-	92
	-	+	-	+	-	9
	-	+	-	-	+	3
	-	-	+	+	-	51
	-	-	+	-	+	9
	-	-	-	+	+	2
						533
1	+	-	-	-	-	199
	-	+	-	-	-	46
	-	-	+	-	-	76
	-	-	-	+	-	25
	-	-	-	-	+	3
						349
0	-	-	-	-	-	17
						17
Total						1227

MPM = multiple primary melanomas, PC = pancreatic cancer, UAC = upper airway cancer

SUPPLEMENTARY TABLE S3. Spectrum of (likely) pathogenic *CDKN2A* variants in Swedish and Dutch melanoma families (validation cohort)

	<i>CDKN2A</i> nucleotide change*	p16INK4a amino acid change	p14ARF amino acid change	No. of families
Exon 1a	c.83dup	p.Arg29Alafs*15	None	1
	c.134G>T	p.Gly45Val	None	1
	c.143C>T	p.Pro48Leu	None	1
Exon 2	c.179_202del	p.Ala60_Gly67del	p.Gly75_Arg82del	1
	c.225_243del†	p.Ala76Cysfs*64	p.Arg90Valfs*76	2
	c.241C>T	p.Pro81Ser	p.Thr95Ile	1
	c.335_337dup‡	p.Arg112dup	p.Ser127dup	30
	c.353C>T	p.Ala118Val	None (p.Gly132Gly)	1
Total				38

¥ RefSeq NM_000077.4 isoform p16INK4a

† p16-*Leiden*. Dutch founder mutation

‡ Swedish founder mutation

