



Universiteit
Leiden
The Netherlands

Multimodal visualization of adult stem cells in inner ear and brain pathology
Schomann, T.

Citation

Schomann, T. (2019, May 16). *Multimodal visualization of adult stem cells in inner ear and brain pathology*. Retrieved from <https://hdl.handle.net/1887/72413>

Version: Not Applicable (or Unknown)

License: [Leiden University Non-exclusive license](#)

Downloaded from: <https://hdl.handle.net/1887/72413>

Note: To cite this publication please use the final published version (if applicable).

Cover Page



Universiteit Leiden



The following handle holds various files of this Leiden University dissertation:

<http://hdl.handle.net/1887/72413>

Author: Schomann, T.

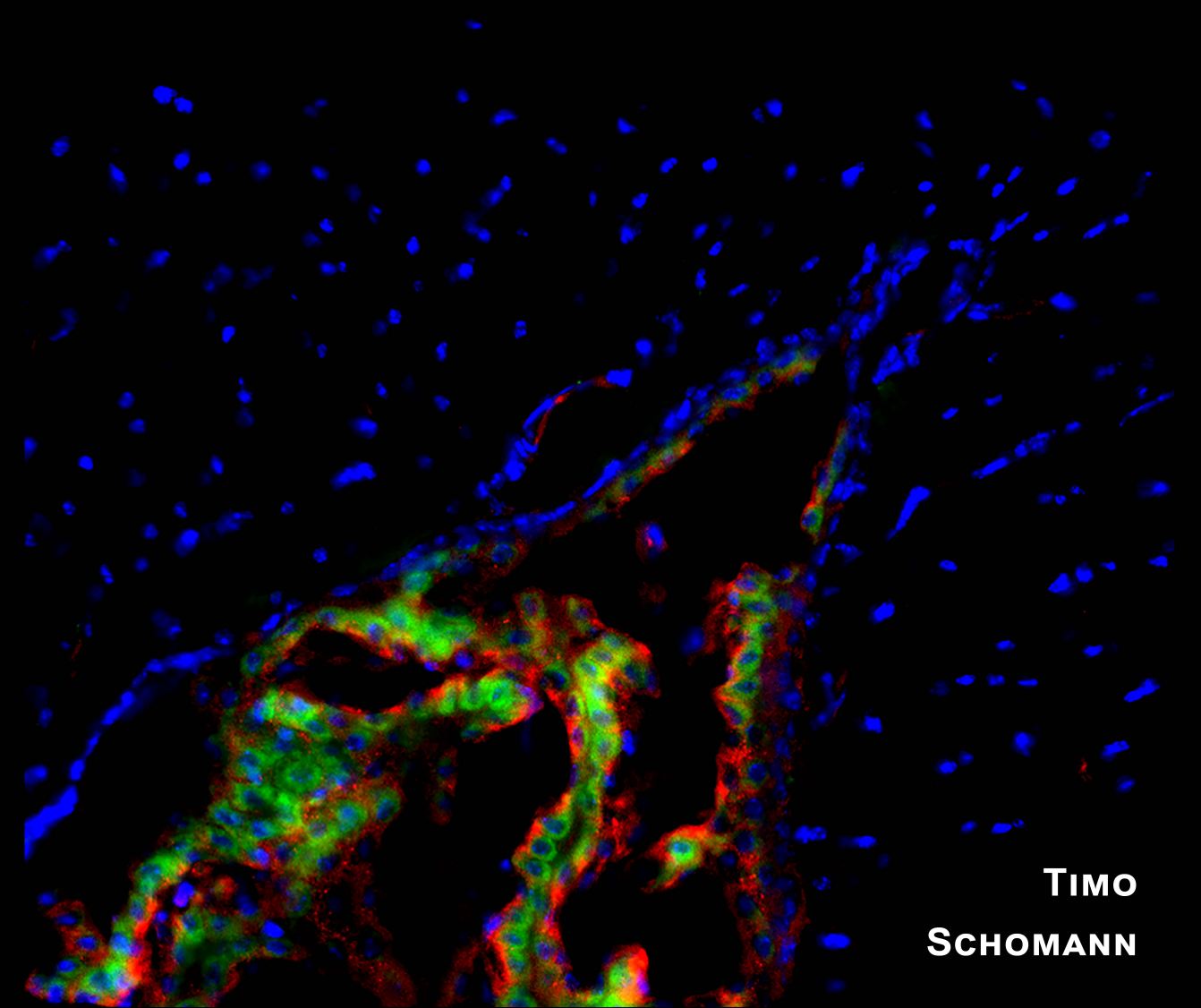
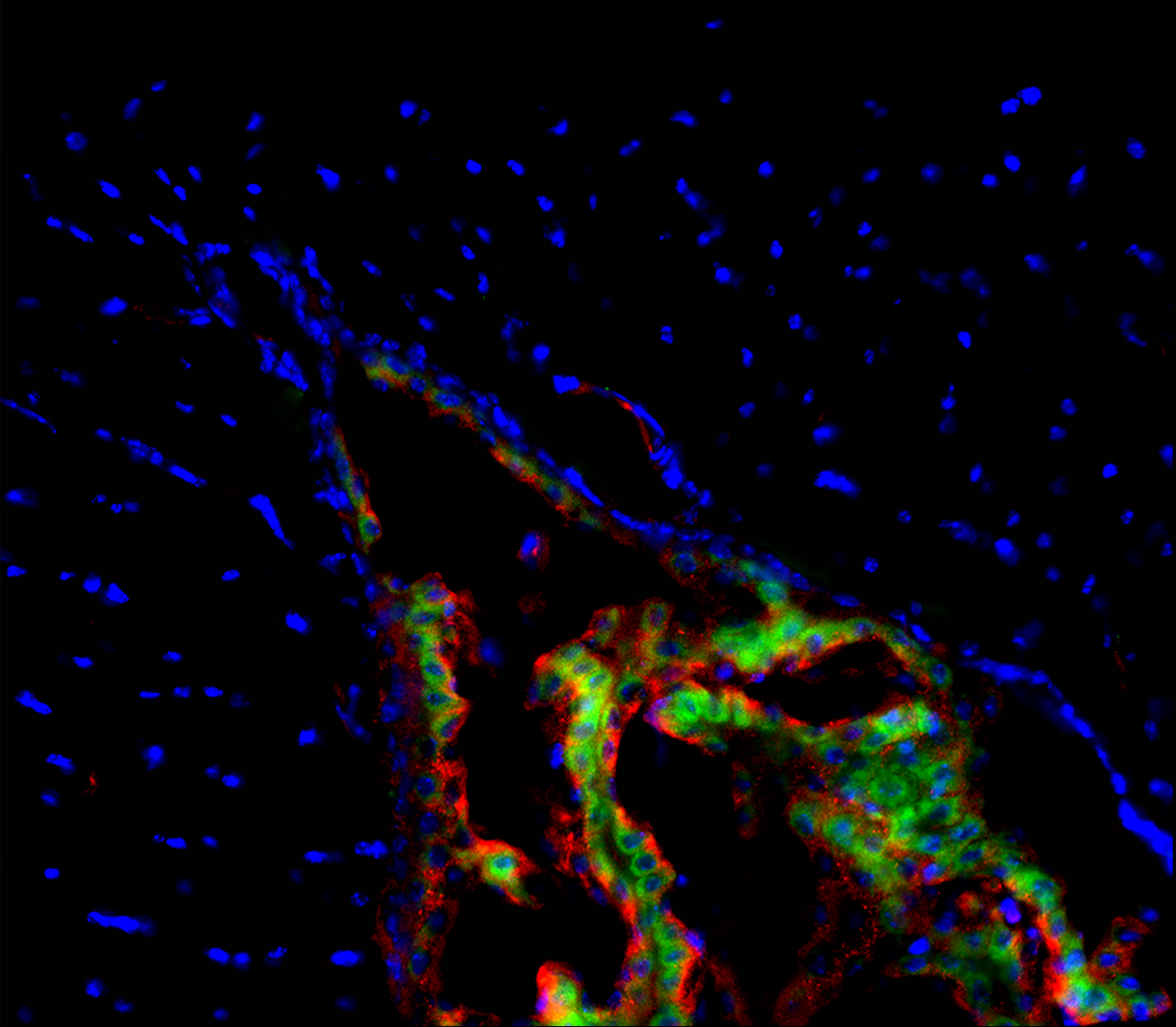
Title: Multimodal visualization of adult stem cells in inner ear and brain pathology

Issue Date: 2019-05-16

MULTIMODAL VISUALIZATION OF ADULT STEM CELLS IN INNER EAR AND BRAIN PATHOLOGY

MULTIMODAL VISUALIZATION OF ADULT STEM CELLS IN INNER EAR AND BRAIN PATHOLOGY

TIMO SCHOMANN



TIMO
SCHOMANN