



Universiteit  
Leiden  
The Netherlands

## **Role of cardiac biomarkers in cognitive impairment and functional decline**

Mahin Rad, S.

### **Citation**

Mahin Rad, S. (2018, November 29). *Role of cardiac biomarkers in cognitive impairment and functional decline*. Retrieved from <https://hdl.handle.net/1887/67289>

Version: Not Applicable (or Unknown)

License: [Licence agreement concerning inclusion of doctoral thesis in the Institutional Repository of the University of Leiden](#)

Downloaded from: <https://hdl.handle.net/1887/67289>

**Note:** To cite this publication please use the final published version (if applicable).

Cover Page



Universiteit Leiden



The handle <http://hdl.handle.net/1887/67289> holds various files of this Leiden University dissertation.

**Author:** Mahin Rad, S.

**Title:** Role of cardiac biomarkers in cognitive impairment and functional decline

**Issue Date:** 2018-11-29

# CHAPTER 1

## GENERAL INTRODUCTION

---

## **Burden of Cognitive Impairment and Functional Decline in Old Age**

The recent increase in life expectancy and decreased birth rate have resulted in a rapid rise of older individuals worldwide<sup>1</sup>. In particular, 8.3% of the Europe's population are aged above 75 years, and this proportion is projected to increase up to 10.7% by 2030<sup>2</sup>. Such population ageing has a profound impact on the burden of age-related disorders such as dementia and functional disability<sup>3</sup>. In fact, currently 47 million people are living with dementia worldwide, while these numbers are expected to rise to 75 million by 2030<sup>2</sup>. Despite these alarming public health projections, current treatment strategies have largely been unsuccessful in delaying the progression of cognitive impairment and functional decline<sup>4</sup>. Consequently, such ageing-related disorders create an important challenge for medicine, public health services and society<sup>1</sup>.

Mounting evidence suggest that cognitive impairment and functional decline have a long preclinical phase<sup>5</sup>. In fact, several older subjects develop mild cognitive impairment years before progression to dementia<sup>6</sup>. As such, effective identification of risk factors in an early stage may provide an opportunity for the timely start of disease modifying interventions<sup>5</sup>. This premise, however, necessitates elucidating the link between the pathological processes and the onset of clinical symptoms<sup>5,7</sup>.

## **Cardiac Function and Cognitive Impairment: Pathophysiological Perspectives**

Over the past couple of decades, a large number of preclinical and clinical studies have focused on identifying the main causes of dementia<sup>8</sup>. Despite huge investments, strategies targeting the neurodegenerative changes in the brain of demented subjects have proven to be unsuccessful<sup>9</sup>. While Alzheimer's disease is the most common type of dementia, vascular dementia is largely recognized as an independent contributor to cognitive impairment<sup>10</sup>. Interestingly, it has been shown that neuro-vascular damage is a common feature in Alzheimer's disease<sup>4</sup>. Meanwhile, vascular dementia and Alzheimer's disease have also been

shown to be highly prevalent in heart failure patients<sup>11, 12</sup>. Furthermore, vascular damage such as atherosclerosis and peripheral arterial disease are shown to be predictors of functional decline<sup>13, 14</sup>. Together, these findings suggest a potential contribution of cardiac and vascular disturbances to cognitive impairment and functional decline in old age<sup>15</sup>.

Cardiac and vascular contributions to cognitive brain ageing have been captured in the heart-brain connection hypothesis<sup>16</sup>. This hypothesis states that cardiac and vascular pathologies affect the hemodynamic status of the brain resulting in cerebral hypo-perfusion, neuronal crisis and dysregulation of the neurovascular unit<sup>17</sup>. Ultimately, this might lead to neuronal injury and impairment of the structural and functional integrity of the brain<sup>18</sup>. In fact, animal studies showed a negative influence of cerebral hypo-perfusion on structure and function of the brain<sup>19</sup>. In human subjects, the detrimental effects of cerebral hypo-perfusion have been frequently studied in heart failure patients<sup>20</sup>. It was shown that heart failure patients are at increased risk of dementia<sup>21</sup>, and restoration of cardiac function improved cerebral blood flow and cognitive function<sup>22, 23</sup>. On the other hand, recent findings suggest that the link between cardiac dysfunction and cognitive impairment might not be limited to overt cardiac damage<sup>17</sup>. Instead, it has been suggested that individuals with suboptimal cardiac function might also be at increased risk of dementia<sup>24</sup>. This is supported by studies demonstrating a link between graded decrease in cardiac function and features of brain ageing<sup>25, 26</sup>. However, there has been lack of studies on the link between subclinical cardiac dysfunction and cognitive impairment, and the mechanisms underlying this association remain largely unknown.

The physiological connection between the heart and the brain is rather complex and not limited to vascular and hemodynamic factors<sup>17</sup>. Particularly, neuronal and hormonal mediators act in concrete to maintain homeostasis of the cerebro- and cardiovascular systems<sup>27, 28</sup>. It is known that the autonomic nervous system regulates the adoptive response of the cardiovascular system to the rapidly changing external stimuli<sup>28</sup>. Furthermore, cardiac hormones and hormones released from the hypothalamus-pituitary-adrenal glands act in a tangible feedback loop to regulate body fluid homeostasis, blood pressure, stress responses

and inflammation<sup>29</sup>. Notably, increased levels of plasma cardiac hormones have been shown to associate with dementia and cognitive impairment, even in the absence of overt cardiac damage<sup>24, 30</sup>. However, the pathological mechanism linking cardiac hormones with cognitive impairment remains largely unknown.

Building on this background, the aim of this thesis was to explore the link between cardiac biomarkers, cognitive impairment and functional decline in older subjects with a focus on non-invasive markers that are routinely available in clinical practice.

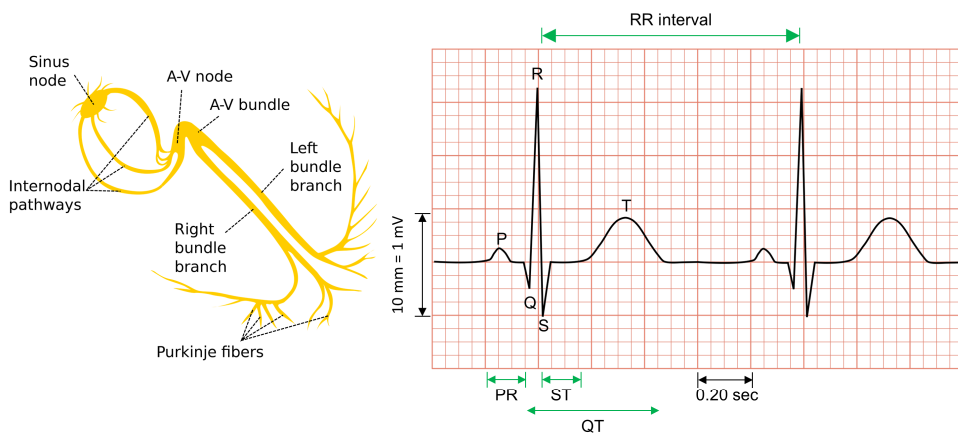
## **Cardiac Biomarkers Derived from Electrocardiogram**

### *Heart Rate and Heart Rate Variability*

The autonomic nervous system is a branch of the peripheral nervous system that plays an important role in regulation of cardiovascular homeostasis<sup>28</sup>. Particularly, the sympathetic and parasympathetic branches of the autonomic nervous system innervate the sinoatrial node and regulate heart rate<sup>31</sup>. By modulating the heart rate, the autonomic nervous system keeps blood pressure within an optimal range and ensures adequate perfusion to vital organs<sup>32</sup>. This cardiac autonomic control is frequently assessed by means of heart rate variability<sup>7</sup>. Heart rate variability is characterized as the beat to beat variations in consecutive heart beat intervals that represents the synchronized action of the autonomic nervous system on the sinoatrial node<sup>33</sup> (Figure1). Importantly, increased heart rate and reduced heart rate variability indicate a disturbed cardiac autonomic control and decreased resilience to stressors<sup>34</sup>.

Heart rate variability is usually measured from a 12-lead electrocardiogram (ECG) recording by means of “time domain” or “frequency domain” methods. The “time domain” methods are among the most commonly used measures of heart rate variability<sup>7</sup>. Their measurement depends on detection of the QRS complexes and normal-to-normal (NN) RR intervals. The NN interval refers to the interval between the neighboring QRS complexes that

are generated from the sinoatrial node. The most simple “time domain” measures include the mean NN interval, the mean heart rate, and the difference between the longest and shortest NN interval. More complex “time-domain” measures include the standard deviation of NN intervals (SDNN), heart rate variability triangular index, standard deviation of the average NN intervals (SDANN) and the square root of the mean squared differences of successive NN intervals (RMSSD)<sup>7</sup>.



**Figure 1. Cardiac conduction system and electrocardiogram waveforms.** The figure shows a schematic view of the components of the electrical conduction system of the heart and an ECG-recording. The electrical impulses generated from the sinus node travel to the A-V node. After a delay, the electrical impulses spread through the cardiac ventricles via bundle branches and Purkinje fibers. The ECG captures these electrical impulses in forms of ECG-waveforms. The P wave represents depolarization of atrium; the QRS complex represents depolarization of ventricles and the T wave captures repolarization of ventricles. Sources: Wikipedia and the cardiovascular physiology website (<http://www.cvphysiology.com>).

### *Left Ventricular Hypertrophy*

The cardiac wall tissue consists of an elastic network of myocyte cells encompassed in a collagen matrix that connects the myocytes and supports the coronary vasculature<sup>35</sup>. An

increase in the cardiac workload results in a range of changes in the cardiac tissue architecture that manifests as thickening of the cardiac wall structure<sup>36</sup>. For example, a chronic increase in cardiac workload such as that in hypertension leads to thickening of the cardiac left ventricle walls. This cardiac structural remodeling known as left ventricular hypertrophy may in turn hamper diastolic function and decrease cardiac output<sup>36</sup>. Particularly, left ventricular hypertrophy is considered a precursor of clinical heart failure in the form of diastolic heart failure<sup>37</sup>. As such, a long lasting hemodynamic stress manifested in cardiac structural remodeling can be detected by means of assessment of left ventricular hypertrophy<sup>8</sup>.

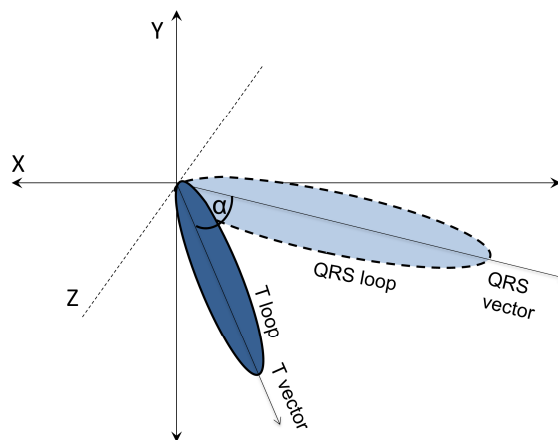
There are different ECG-markers for measurements of left ventricular hypertrophy that are frequently based on the amplitude of R and S waves. Since the duration of the QRS complex is frequently increased in left ventricular hypertrophy<sup>38</sup>, the QRS complex is incorporated in the calculation of a number of ECG markers<sup>39</sup>. The Sokolow-Lyon product is among such markers that is commonly used in evaluation of left ventricular hypertrophy patients from ECG<sup>39,40</sup>. In practice, the Sokolow-Lyon product is defined as the sum of S wave in the V1 lead plus the R wave in V5 or V6 leads, multiplied by the duration of the QRS complex<sup>40</sup>. Of note, most ECG markers for left ventricular hypertrophy have a high specificity ranging from 85% to 90%<sup>39</sup>.

### *Spatial QRS-T angle*

The cardiac action potential consists of waves of depolarization and repolarization. During a cardiac cycle, the loss of electrical charges in cardiac cells result in depolarization (excitation), that is followed by a period of electrical inactivity and repolarization (relaxation), i.e. restoration of electrical charge in the cardiac cells<sup>41</sup>. The depolarization and repolarization waves are generated through a cascade of ionic movements between the intra- and extracellular spaces that result in cardiac muscle contraction/relaxation<sup>42</sup>. An important feature of the cardiac action potential is the ventricular gradient: heterogeneous restoration of electrical charges in the ventricles<sup>43</sup>. This phenomenon is a result of delayed repolarization in the endocardium (inner cardiac tissue layer) compared to the epicardium (outer cardiac

tissue layer)<sup>43</sup>. In fact, the depolarization waves start in the endocardium and travel toward the epicardium, while the repolarization begins in the epicardium rather than the endocardium. As a result, the electrical changes generated by depolarization (QRS axis) and the electrical changes generated by repolarization (T-wave axis) are in opposing directions, forming an angular shape. This angle is known as the QRS-T angle. The QRS-T angle has been originally measured by means of vectorcardiogram in three orthonormal leads of X,Y and Z and referred to as the spatial QRS-T angle<sup>43, 44</sup>(Figure 2). Using modern computerized methods, the spatial QRS-T angle can be reconstructed using information derived from a 12-lead ECG<sup>45</sup>.

The spatial QRS-T angle provides novel additional information about the function of cardiac ventricles that is not captured with a routine 12-lead ECG. Importantly, cardiac pathophysiological changes such as ischemia, fibrosis, ionic channel disturbances or infarction result in an abnormally wide spatial QRS-T angle indicating localized non-physiological changes<sup>43</sup>. Hence, a wide spatial QRS-T angle might indicate early hemodynamic stresses to the cardiac ventricles.

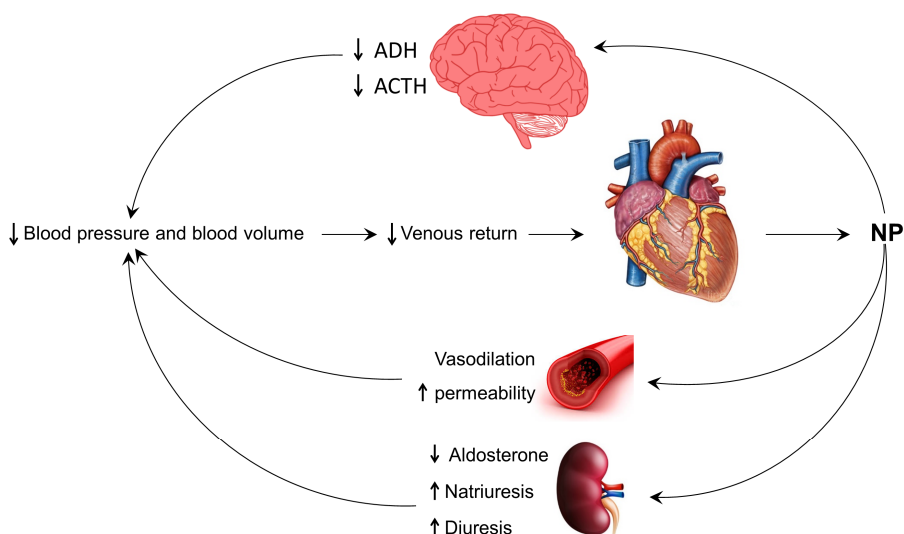


**Figure 2. Spatial QRS-T angle in a three dimensional space.** Figure shows orthonormal leads of X, Y and Z in a 3-dimensional space. Using T loop and QRS loop, the main T and QRS vectors (arrows) are calculated. The T vector shows the mean direction of ventricular repolarization and the QRS vector shows the mean direction of ventricular depolarization. The angle between the T and QRS vectors ( $\alpha$ ) represents the spatial QRS-T angle. Adopted from *Vahedi, Farzad, et al. Journal of Applied Physiology 113.3 (2012): 368-376.*

## Cardiac Biomarkers Derived from Plasma and Brain Tissue

### Natriuretic Peptides

Natriuretic peptides (NP), often referred to as cardiac hormones, are cardiac biomarkers that are used in clinical practice for diagnosis of heart failure and cardiac wall stress<sup>46</sup>. They consist of a family of structurally related peptides that are released into the circulation in response to cardiac wall stretch and volume overload<sup>47</sup>. The opposing action of NP on the renin–angiotensin–aldosterone system and their vasodilatory effect contribute to natriuresis, diuresis and lowering the blood pressure<sup>24</sup> (Figure 3).



**Figure 3. The main physiological functions of the natriuretic peptides in the systemic circulation.** Natriuretic peptides are released into the circulation in response to volume overload. Upon release, they stimulate the natriuretic peptide receptors that are located on the kidney, vessel walls and the brain. Consequently, this results in activation and/or deactivation of several biological pathways in the systemic circulation as well as in the brain. NPs: natriuretic peptides, ADH: antidiuretic hormone, ACTH: Adrenocorticotrophic hormone. Adopted from: *Moro, Cedric, and Max Lafontan. American Journal of Physiology-Heart and Circulatory Physiology 304.3 (2013): H358-H368.*

Furthermore, a gradual increase in the plasma levels of NP indicates a graded decrease in cardiac function and severity of heart failure<sup>24, 48</sup>. Several studies have shown that higher plasma levels of NP associate with cognitive impairment, even in subjects free of heart failure<sup>30, 49, 50</sup>. Interestingly, growing evidence suggests that the role of natriuretic peptides is not limited to the cardiovascular system, but that they might as well be essential in regulation of brain homeostasis<sup>51</sup>. Differential evidence from animal and human models suggests the presence and expression of natriuretic peptides in brain tissue and cerebrospinal fluid<sup>52</sup>. In fact, natriuretic peptides might be involved in regulation of several brain functions such as neurovascular integrity, synaptic transmutation and neruo-inflammation<sup>51</sup>. However, the role of centrally acting natriuretic peptides in the brain of human subjects remains unknown.

## Outline of this thesis

**Chapter 2** tests the association of resting heart rate, heart rate variability and functional decline in older subjects. **Chapter 3** explores the independent link between heart rate variability and cognitive function in older subjects. **Chapter 4** is devoted to studying the relation between left ventricular hypertrophy and cognitive function; and **Chapter 5** assesses the relation between spatial QRS-T angle and cognitive function in older subjects. **Chapter 2, 3, 4 and 5** are performed using participants of the PROspective Study of Pravastatin in the Elderly at Risk (PROSPER) cohort who are at increased risk of cardiovascular disease<sup>53</sup>. The physiology of natriuretic peptides and the role of centrally acting natriuretic peptides in relation to cognitive impairment is described in **Chapter 6**. **Chapter 7** explores the distribution of natriuretic peptides in the brain of post-mortem human subjects and their relation to Alzheimer's disease. **Chapter 8** summarizes the main findings of this thesis and discusses the future perspectives.

## References

1. Gorelick PB, Furie KL, Iadecola C, Smith EE, Waddy SP, Lloyd-Jones DM, et al. Defining optimal brain health in adults: A presidential advisory from the American Heart Association/American Stroke Association. *Stroke; a journal of cerebral circulation*. 2017;48:e284-e303
2. Winblad B, Amouyel P, Andrieu S, Ballard C, Brayne C, Brodaty H, et al. Defeating Alzheimer's disease and other dementias: A priority for European science and society. *The Lancet. Neurology*. 2016;15:455-532
3. Prince M, Bryce R, Albanese E, Wimo A, Ribeiro W, Ferri CP. The global prevalence of dementia: A systematic review and meta-analysis. *Alzheimer's & dementia : the journal of the Alzheimer's Association*. 2013;9:63-75 e62
4. Querfurth HW, LaFerla FM. Alzheimer's disease. *The New England journal of medicine*. 2010;362:329-344
5. Sperling RA, Aisen PS, Beckett LA, Bennett DA, Craft S, Fagan AM, et al. Toward defining the preclinical stages of Alzheimer's disease: Recommendations from the National Institute on Aging-Alzheimer's Association Workgroups on Diagnostic Guidelines for Alzheimer's Disease. *Alzheimer's & dementia : the journal of the Alzheimer's Association*. 2011;7:280-292
6. McKhann GM, Knopman DS, Chertkow H, Hyman BT, Jack CR, Jr., Kawas CH, et al. The diagnosis of dementia due to Alzheimer's disease: Recommendations from the National Institute on Aging-Alzheimer's Association Workgroups on Diagnostic Guidelines for Alzheimer's Disease. *Alzheimer's & dementia : the journal of the Alzheimer's Association*. 2011;7:263-269
7. Heart rate variability. Standards of measurement, physiological interpretation, and clinical use. Task Force of the European Society of Cardiology and the North American Society of Pacing and Electrophysiology. *European heart journal*. 1996;17:354-381
8. Edwards JD. The importance of identifying early changes in cardiac structure and function for the prevention of cognitive impairment and dementia. *Journal of Alzheimer's disease : JAD*. 2017;58:285-288
9. Korczyn AD. Why have we failed to cure Alzheimer's disease? *Journal of Alzheimer's disease : JAD*. 2012;29:275-282
10. Gorelick PB, Scuteri A, Black SE, Decarli C, Greenberg SM, Iadecola C, et al. Vascular contributions to cognitive impairment and dementia: A statement for healthcare professionals from the American Heart Association/American Stroke Association. *Stroke; a journal of cerebral circulation*. 2011;42:2672-2713
11. Qiu C, Winblad B, Marengoni A, Klarin I, Fastbom J, Fratiglioni L. Heart failure and risk of dementia and Alzheimer disease: A population-based cohort study. *Archives of internal medicine*. 2006;166:1003-1008
12. Cermakova P, Lund LH, Fereshtehnejad SM, Johnell K, Winblad B, Dahlstrom U, et al. Heart failure and dementia: Survival in relation to types of heart failure and different dementia disorders. *European journal of heart failure*. 2015;17:612-619
13. Mathers C, Fat DM, Boerma J. *The global burden of disease: 2004 update*. World Health Organization; 2008.

14. McDermott MM, Liu K, Greenland P, Guralnik JM, Criqui MH, Chan C, et al. Functional decline in peripheral arterial disease: Associations with the ankle brachial index and leg symptoms. *Jama*. 2004;292:453-461
15. van Buchem MA, Biessels GJ, Brunner la Rocca HP, de Craen AJ, van der Flier WM, Ikram MA, et al. The heart-brain connection: A multidisciplinary approach targeting a missing link in the pathophysiology of vascular cognitive impairment. *Journal of Alzheimer's Disease*. 2014;42:S443-S451
16. Hooghiemstra AM, Bertens AS, Leeuwis AE, Bron EE, Bots ML, Brunner-La Rocca HP, et al. The missing link in the pathophysiology of vascular cognitive impairment: Design of the heart-brain study. *Cerebrovascular diseases extra*. 2017;7:140-152
17. van der Velpen IF, Yancy CW, Sorond FA, Sabayan B. Impaired cardiac function and cognitive brain aging. *The Canadian journal of cardiology*. 2017
18. de la Torre JC. Cardiovascular risk factors promote brain hypoperfusion leading to cognitive decline and dementia. *Cardiovascular psychiatry and neurology*. 2012;2012:367516
19. Sarti C, Pantoni L, Bartolini L, Inzitari D. Cognitive impairment and chronic cerebral hypoperfusion: What can be learned from experimental models. *Journal of the neurological sciences*. 2002;203-204:263-266
20. Jefferson AL. Cardiac output as a potential risk factor for abnormal brain aging. *Journal of Alzheimer's disease : JAD*. 2010;20:813-821
21. Adelborg K, Horvath-Puho E, Ording A, Pedersen L, Toft Sorensen H, Henderson VW. Heart failure and risk of dementia: A danish nationwide population-based cohort study. *European journal of heart failure*. 2017;19:253-260
22. Zuccala G, Onder G, Marzetti E, Monaco MR, Cesari M, Cocchi A, et al. Use of angiotensin-converting enzyme inhibitors and variations in cognitive performance among patients with heart failure. *European heart journal*. 2005;26:226-233
23. Gruhn N, Larsen FS, Boesgaard S, Knudsen GM, Mortensen SA, Thomsen G, et al. Cerebral blood flow in patients with chronic heart failure before and after heart transplantation. *Stroke; a journal of cerebral circulation*. 2001;32:2530-2533
24. van der Velpen IF, Feleus S, Bertens AS, Sabayan B. Hemodynamic and serum cardiac markers and risk of cognitive impairment and dementia. *Alzheimer's & dementia : the journal of the Alzheimer's Association*. 2017;13:441-453
25. Sabayan B, van Buchem MA, Sigurdsson S, Zhang Q, Harris TB, Gudnason V, et al. Cardiac hemodynamics are linked with structural and functional features of brain aging: The age, gene/environment susceptibility (ages)-reykjavik study. *Journal of the American Heart Association*. 2015;4:e001294
26. Jefferson AL, Himali JJ, Beiser AS, Au R, Massaro JM, Seshadri S, et al. Cardiac index is associated with brain aging: The framingham heart study. *Circulation*. 2010;122:690-697
27. Cipolla MJ. *The cerebral circulation*. San Rafael (CA); 2009.
28. Gordan R, Gwathmey JK, Xie LH. Autonomic and endocrine control of cardiovascular function. *World J Cardiol*. 2015;7:204-214

29. Clerico A, Recchia FA, Passino C, Emdin M. Cardiac endocrine function is an essential component of the homeostatic regulation network: Physiological and clinical implications. *American journal of physiology. Heart and circulatory physiology*. 2006;290:H17-29
30. Wijsman LW, Sabayan B, van Vliet P, Trompet S, de Ruijter W, Poortvliet RK, et al. N-terminal pro-brain natriuretic peptide and cognitive decline in older adults at high cardiovascular risk. *Annals of neurology*. 2014;76:213-222
31. McCorry LK. Physiology of the autonomic nervous system. *Am J Pharm Educ*. 2007;71:78
32. Sloan RP, Demeersman RE, Shapiro PA, Bagiella E, Kuhl JP, Zion AS, et al. Cardiac autonomic control is inversely related to blood pressure variability responses to psychological challenge. *Am J Physiol*. 1997;272:H2227-2232
33. Hamilton RM, McKechnie PS, Macfarlane PW. Can cardiac vagal tone be estimated from the 10-second ecg? *International journal of cardiology*. 2004;95:109-115
34. Oglari G, Mahinrad S, Stott DJ, Jukema JW, Mooijaart SP, Macfarlane PW, et al. Resting heart rate, heart rate variability and functional decline in old age. *CMAJ*. 2015;187:E442-449
35. Vogt M, Motz WH, Schwartzkopf B, Strauer BE. Pathophysiology and clinical aspects of hypertensive hypertrophy. *European heart journal*. 1993;14 Suppl D:2-7
36. Lorell BH, Carabello BA. Left ventricular hypertrophy: Pathogenesis, detection, and prognosis. *Circulation*. 2000;102:470-479
37. Gradman AH, Alfayoumi F. From left ventricular hypertrophy to congestive heart failure: Management of hypertensive heart disease. *Progress in cardiovascular diseases*. 2006;48:326-341
38. Okin PM, Roman MJ, Devereux RB, Pickering TG, Borer JS, Kligfield P. Time-voltage qrs area of the 12-lead electrocardiogram: Detection of left ventricular hypertrophy. *Hypertension*. 1998;31:937-942
39. Hancock EW, Deal BJ, Mirvis DM, Okin P, Kligfield P, Gettes LS, et al. Aha/accf/hrs recommendations for the standardization and interpretation of the electrocardiogram: Part v: Electrocardiogram changes associated with cardiac chamber hypertrophy: A scientific statement from the american heart association electrocardiography and arrhythmias committee, council on clinical cardiology; the american college of cardiology foundation; and the heart rhythm society. Endorsed by the international society for computerized electrocardiology. *Journal of the American College of Cardiology*. 2009;53:992-1002
40. Molloy TJ, Okin PM, Devereux RB, Kligfield P. Electrocardiographic detection of left ventricular hypertrophy by the simple qrs voltage-duration product. *Journal of the American College of Cardiology*. 1992;20:1180-1186
41. AlGhatrif M, Lindsay J. A brief review: History to understand fundamentals of electrocardiography. *Journal of community hospital internal medicine perspectives*. 2012;2
42. Katz AM. *Physiology of the heart*. Lippincott Williams & Wilkins; 2010.
43. Voulgari C, Pagoni S, Tesfaye S, Tentolouris N. The spatial qrs-t angle: Implications in clinical practice. *Curr Cardiol Rev*. 2013;9:197-210

44. Voulgari C, Tentolouris N. Assessment of the spatial qrs-t angle by vectorcardiography: Current data and perspectives. *Curr Cardiol Rev.* 2009;5:251-262
45. Oehler A, Feldman T, Henrikson CA, Tereshchenko LG. Qrs-t angle: A review. *Annals of noninvasive electrocardiology : the official journal of the International Society for Holter and Noninvasive Electrocardiology, Inc.* 2014;19:534-542
46. Bettencourt P. Nt-probnp and bnp: Biomarkers for heart failure management. *European journal of heart failure.* 2004;6:359-363
47. Potter LR, Abbey-Hosch S, Dickey DM. Natriuretic peptides, their receptors, and cyclic guanosine monophosphate-dependent signaling functions. *Endocrine reviews.* 2006;27:47-72
48. Yancy CW, Jessup M, Bozkurt B, Butler J, Casey DE, Jr., Colvin MM, et al. 2017 accf/aha/hfsa focused update of the 2013 accf/aha guideline for the management of heart failure: A report of the american college of cardiology/american heart association task force on clinical practice guidelines and the heart failure society of america. *Journal of cardiac failure.* 2017;23:628-651
49. Sabayan B, van Buchem MA, de Craen AJ, Sigurdsson S, Zhang Q, Harris TB, et al. N-terminal pro-brain natriuretic peptide and abnormal brain aging: The ages-reykjavik study. *Neurology.* 2015;85:813-820
50. van Vliet P, Sabayan B, Wijsman LW, Poortvliet RK, Mooijaart SP, de Ruijter W, et al. Nt-probnp, blood pressure, and cognitive decline in the oldest old: The leiden 85-plus study. *Neurology.* 2014;83:1192-1199
51. Cao LH, Yang XL. Natriuretic peptides and their receptors in the central nervous system. *Progress in neurobiology.* 2008;84:234-248
52. Hodes A, Lichtstein D. Natriuretic hormones in brain function. *Frontiers in endocrinology.* 2014;5:201
53. Shepherd J, Blauw GJ, Murphy MB, Cobbe SM, Bollen EL, Buckley BM, et al. The design of a prospective study of pravastatin in the elderly at risk (prosper). Prosper study group. Prospective study of pravastatin in the elderly at risk. *The American journal of cardiology.* 1999;84:1192-1197

