



Universiteit
Leiden
The Netherlands

Monogenic models of migraine : from clinical phenotypes to pathophysiological mechanisms

Pelzer, N.

Citation

Pelzer, N. (2018, November 28). *Monogenic models of migraine : from clinical phenotypes to pathophysiological mechanisms*. Retrieved from <https://hdl.handle.net/1887/67103>

Version: Not Applicable (or Unknown)

License: [Licence agreement concerning inclusion of doctoral thesis in the Institutional Repository of the University of Leiden](#)

Downloaded from: <https://hdl.handle.net/1887/67103>

Note: To cite this publication please use the final published version (if applicable).

Cover Page



Universiteit Leiden

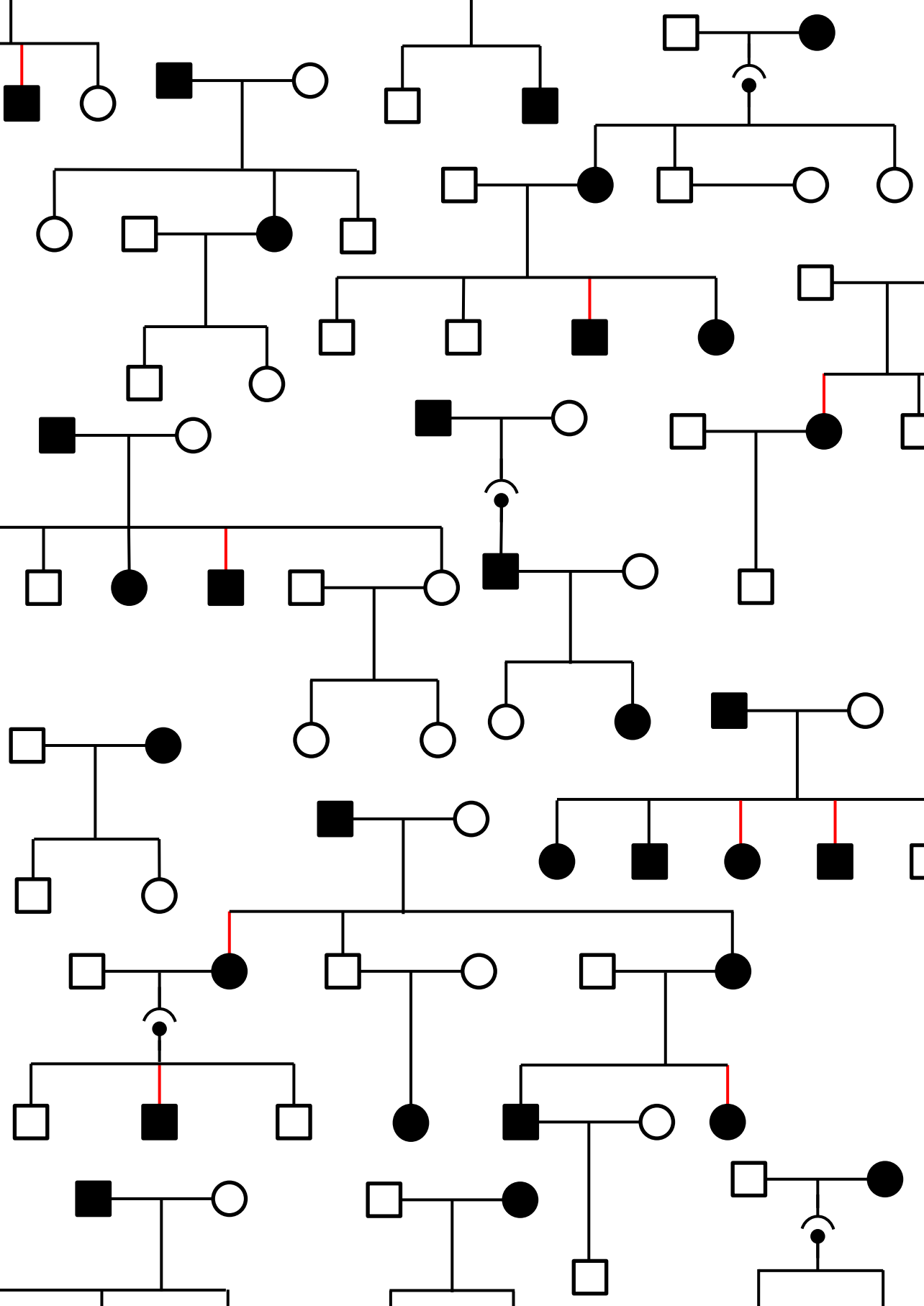


The handle <http://hdl.handle.net/1887/67103> holds various files of this Leiden University dissertation.

Author: Pelzer, N.

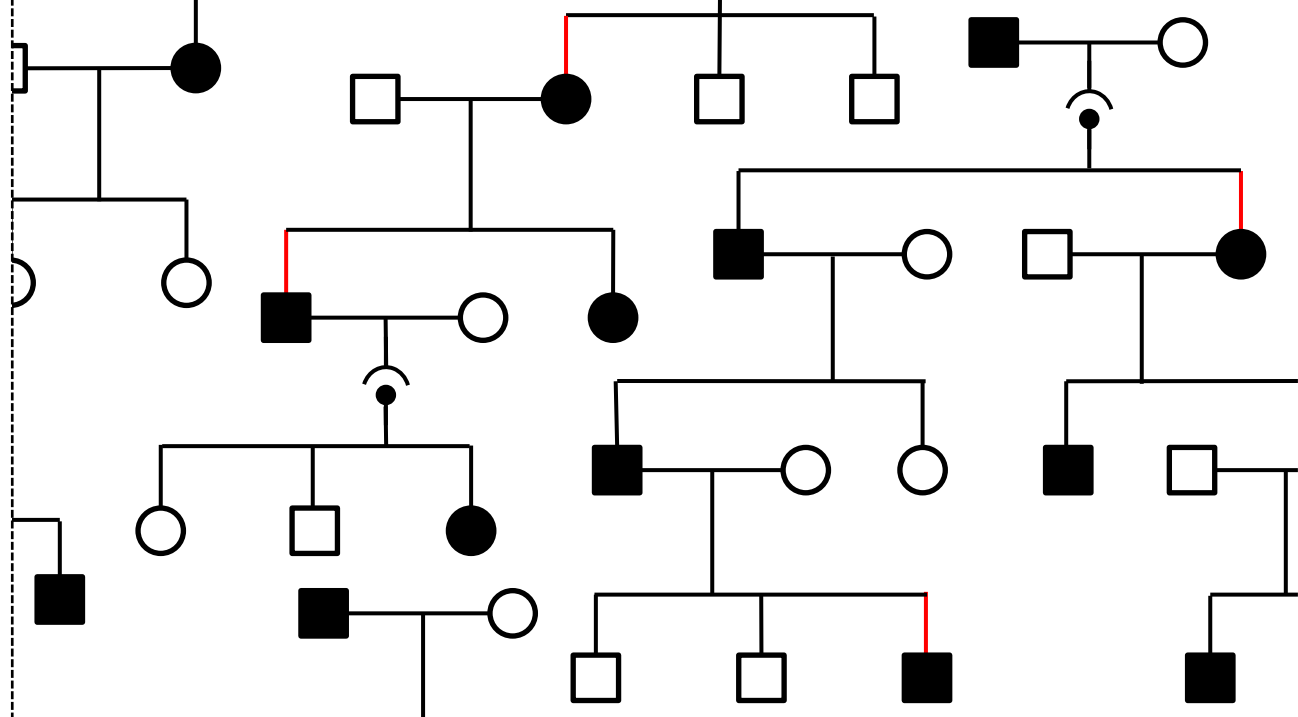
Title: Monogenic models of migraine : from clinical phenotypes to pathophysiological mechanisms

Issue Date: 2018-11-28



Monogenic models of migraine: from clinical phenotypes to pathophysiological mechanisms

Nadine Pelzer



Monogenic models of migraine
from clinical phenotypes to pathophysiological mechanisms

Nadine Pelzer

