



Universiteit  
Leiden  
The Netherlands

## Ocular responses to foreign corneal and tumor issue

Essen, T.H. van

### Citation

Essen, T. H. van. (2018, November 14). *Ocular responses to foreign corneal and tumor issue*. Retrieved from <https://hdl.handle.net/1887/66878>

Version: Not Applicable (or Unknown)

License: [Licence agreement concerning inclusion of doctoral thesis in the Institutional Repository of the University of Leiden](#)

Downloaded from: <https://hdl.handle.net/1887/66878>

**Note:** To cite this publication please use the final published version (if applicable).

Cover Page



Universiteit Leiden



The handle <http://hdl.handle.net/1887/66878> holds various files of this Leiden University dissertation.

**Author:** Essen, T.H. van

**Title:** Ocular responses to foreign corneal and tumor issue

**Issue Date:** 2018-11-14

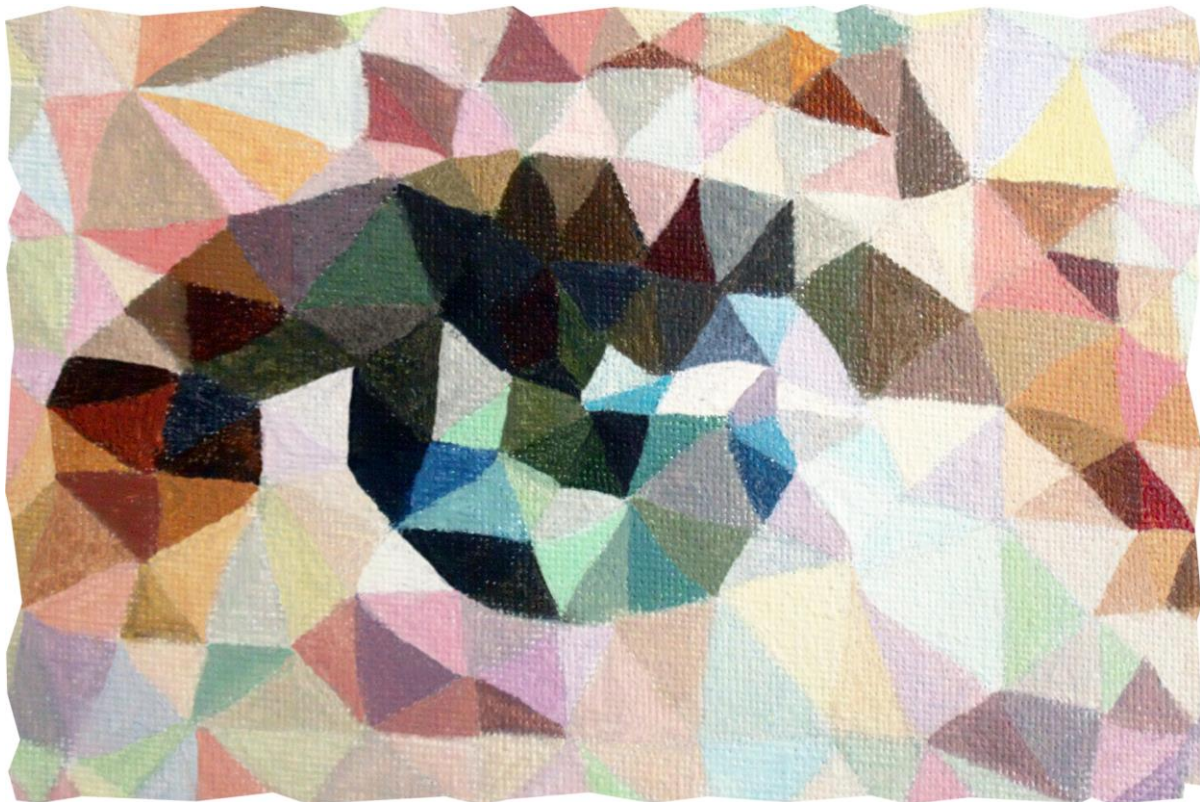
## CHAPTER 6

---

### **Upregulation of HLA Expression in Primary Uveal Melanoma by Infiltrating Leukocytes**

T. Huibertus van Essen, Sake I. van Pelt, Inge H. G. Bronkhorst, Mieke Versluis, Fariba Némati, Cécile Laurent, Gregorius P. M. Luyten, Thorbald van Hall, Peter J. van den Elsen, Pieter A. van der Velden, Didier Decaudin, Martine J. Jager

*PLoS One.* 2016 Oct 20;11(10):e0164292



## Abstract

**Introduction:** Uveal melanoma (UM) with an inflammatory phenotype, characterized by infiltrating leukocytes and increased human leukocyte antigen (HLA) expression, carry an increased risk of death due to metastases. These tumors should be ideal for T-cell based therapies, yet it is not clear why prognostically-infaust tumors have a high HLA expression. We set out to determine whether the level of HLA molecules in UM is associated with other genetic factors, HLA transcriptional regulators, or microenvironmental factors.

**Methods:** 28 enucleated UM were used to study HLA class I and II expression, and several regulators of HLA by immunohistochemistry, PCR microarray, qPCR and chromosome SNP-array. Fresh tumor samples of eight primary UM and four metastases were compared to their corresponding xenograft in SCID mice, using a PCR microarray and SNP array.

**Results:** Increased expression levels of HLA class I and II showed no dosage effect of chromosome 6p, but, as expected, were associated with monosomy of chromosome 3. Increased HLA class I and II protein levels were positively associated with their gene expression and with raised levels of the peptide-loading gene *TAP1*, and HLA transcriptional regulators *IRF1*, *IRF8*, *CIITA*, and *NLRC5*, revealing a higher transcriptional activity in prognostically-bad tumors. Implantation of fresh human tumor samples into SCID mice led to a loss of infiltrating leukocytes, and to a decreased expression of HLA class I and II genes, and their regulators.

**Conclusion:** Our data provides evidence for a proper functioning HLA regulatory system in UM, offering a target for T-cell based therapies.

## Introduction

Uveal melanoma (UM) is the most common primary intraocular tumor in adults with an incidence of 5.1 per million.<sup>1</sup> Metastases develop in up to 50% of patients,<sup>2</sup> and there is still no effective cure for metastatic disease. Once the tumor has metastasized, the median patient survival is approximately one year, and survival has remained largely unaltered during the last 40 years.<sup>1</sup> A patient's individual prognosis is easily predictable, as during the last three decades several reliable prognostic markers have been found for UM and tests predicting patient survival have been developed. These include gene-expression profiling (GEP),<sup>3</sup> and chromosome testing: patients that have lost one copy of chromosome 3 (monosomy 3) are at high risk to die from metastatic disease.<sup>4,5</sup> Other chromosomal aberrations which modulate the risk of metastasis are 6p gain<sup>6,7</sup> and 8q gain.<sup>8-10</sup> Gain of 6p is only rarely observed in the same tumor as monosomy 3, and is associated with a favorable prognosis, while gain of 8q is often associated with monosomy of chromosome 3 and associated with a bad prognosis.<sup>6,7</sup>

Inflammation is another prognostic marker for the development of metastatic disease,<sup>4,11</sup> and is associated with monosomy 3.<sup>4,12</sup> Inflammation has been established as one of the hallmarks of cancer,<sup>13</sup> and despite the fact that the eye is an immune-privileged site, inflammation can be present within the intraocular tumor. The inflammatory phenotype seen in UM is characterized by an increased number of tumor-infiltrating lymphocytes and macrophages, as well as an increased expression on UM cells of Human Leukocyte Antigens (HLA) class I and II.<sup>4</sup> Several studies already showed that, in contrast with many other malignancies, a high expression of the HLA class I and II antigens is associated with a poor prognosis.<sup>15-16</sup> The sensitivity of UM to natural killer (NK)-cell mediated lysis was shown to be inversely correlated to this HLA protein expression:<sup>15,17</sup> UM cells with a high HLA class I expression gave rise to higher numbers of metastases in mice, which suggests that the tumor cells are able to escape from NK-cell mediated lysis. As especially UM with a high HLA expression give rise to metastases in patients, this possible escape mechanism may also be present in humans.<sup>18</sup>

The genes encoding both the HLA class I and II antigens are located on chromosome 6p. This faces us with an intriguing paradox because in general, chromosomal gain tends to lead to an increased gene expression in tumors.<sup>19,20</sup> While in UM, 6p gain is associated with a good prognosis, an increase in HLA expression of both classes is associated with a poor prognosis. This made us wonder what exactly regulates HLA expression levels in UM: chromosomal dose effects (gain or loss of chromosome 6), an intrinsic genetic regulation, or external influences. We know that occasionally specific HLA alleles are not expressed.<sup>21</sup> Therefore we looked in a previous study at the association between HLA expression and LOH (Loss of Heterozygosity) of chromosome 6.<sup>22</sup> However, no relation between LOH and lack of expression was observed at the time, suggesting that a low HLA expression was not caused by loss of chromosome 6 material. Furthermore, several studies have

shown that the more malignant UM are not characterized by a downregulation, but by an upregulation of HLA class I and II antigens.<sup>14-16</sup>

While expression at the cell surface depends on a properly-functioning peptide-loading system, regulation at the gene level depends on a set of different genes, which includes *NLRC5* and *CIITA*. *NLRC5* plays a crucial role in the transcriptional regulation of HLA class I genes,<sup>23</sup> and *CIITA* in the transcriptional regulation of the *HLA class II genes*,<sup>24</sup> while it is also involved in *HLA class I* transcriptional activation.<sup>25</sup> The promoters *NLRC5* and *CIITA* are on their turn under the influence of, amongst others, the interferon-regulatory factor 1 (IRF1).<sup>26</sup> Furthermore, Holling et al., using UM cell lines, reported that HLA class II could be induced in half of their UM cell lines, and showed that the lack of HLA class II expression in one particular cell line was caused by epigenetic silencing of the gene encoding *CIITA*. Silencing of *CIITA* was mediated through EZH2 (Enhancer of Zeste Homologue 2, a Polycomb Repressive Complex 2 subunit; chr7q), which triple methylates lysine 27 in histone H3.<sup>27</sup> That not only transcriptional regulators influence HLA class I and II expression, but also external influences, was also shown using UM cell lines where interferon-gamma (IFNG) stimulation led to increased levels of HLA class I and II.<sup>27,28</sup> Additionally, downregulation could be induced by tumor growth factor beta (TGFB).<sup>17,28</sup> However, all of these studies regarding the regulation of HLA expression were performed on a limited number of available cell lines. As IFNG induces upregulation of HLA molecules in cell lines *in vitro*, IFNG produced by tumor-infiltrating leukocytes may have a similar effect *in vivo* in high-risk UM. HLA expression is of great importance for T-cell based therapies, because without HLA-molecules, T-cells cannot react to and subsequently destroy their target cells.<sup>29</sup> Therefore it is important to determine whether HLA expression in UM cells functions properly, and how it is regulated.

We here investigate whether chromosomal dose effects or specific known regulators influence HLA gene or protein expression in UM, this time studying primary enucleated tumors and not cell lines. We analyze the relationship between HLA class I and II RNA and protein levels, and genes involved in the regulation of (HLA) transcription, genes of the peptide-loading system, such as the TAP molecules, and the influence of the absence or presence of one chromosome 3 or 6p. Additionally, we assess the association and influence of the microenvironment on HLA gene expression by comparing expression levels in human primary or metastatic UM with their corresponding xenografts placed in mice, which lack tumor-infiltrating leukocytes.

## Methods

### Study Population

Tumor tissue was obtained from 28 eyes that underwent primary enucleation for UM between 1999 and 2004 at the LUMC in Leiden, the Netherlands. Patient records and survival were updated from the patient's charts and through the Dutch National Registry; the last update was in November 2013.

The current study population has previously been described,<sup>30</sup> but only cases with material suitable for gene-analysis were included; each tumor sample was processed for conventional histopathological evaluation, including cell type assessment according to the modified Callender classification. The mean age at enucleation of the 28 patients was 62 years (median 68, range 28–84 years) and median follow up was 72 months (median 76, range 14–145 months). At the time of the study, 13 patients were alive, 13 had died due to UM metastases, and in two cases, the cause of death was unknown. The mean time to metastasis was 37 months (median 30, range 14–96 months).

### SNP and gene expression

A genome wide micro-array analysis on single-nucleotide polymorphisms (SNPs) was performed with the Affymetrix 250K Nsp array (Affymetrix, Santa Clara, CA, US) to acquire a highly detailed image of the chromosome copy numbers. The average number of copies of all genes lying on the short (p) or long arm (q) of chromosome was used to determine gain or loss of that arm. For chromosome 6p we focused on gain or loss of the HLA region on that arm.

Gene-expression profiling was performed with the Illumina HT12 v4 array (Illumina, Inc., San Diego, CA, US) for the HLA genes (*HLA-A*, *-B*, *beta-2-microglobulin*, *HLA-DR* [*HLA-DRA*, *HLA-DRB1*, *HLA-DRB3*, *HLA-DRB6*] and *HLA-DQ* [*HLA-DQA1*, *HLA-DQB1*]), the genes encoding HLA transcriptional regulators (*NLR5*,<sup>25,26,31</sup> *CIITA*,<sup>25,26,31</sup> *IRF8*, *IRF1*, *IRF2*) and genes of the peptide-loading machinery (*TAP1*, *TAP2*, *PDIA3*, *Tapasin*, *Calreticulin*). Beta-2-microglobulin (B2M) is a component of the HLA class I complex at the cell surface, and should theoretically be upregulated when there are more HLA-molecules on the cell surface. However, the B2M gene is located on a different chromosome (15q21). HLA-C was not analyzed, as it has a tenfold-lower expression at the protein level than HLA-A and -B.<sup>32,33</sup> As the peptide-loading machinery is needed to get a functional HLA class I molecule expressed at the cell surface, we looked at several of these genes. In cases where Illumina provided multiple probes for the same gene, the mean value of these probes was used for further analysis. One of four probes for HLA-A (ILMN\_2165753) was omitted because of discordancy with the values of the other three HLA-A probes.

The Illumina array data discussed in this publication have been deposited in NCBI's Gene Expression Omnibus<sup>34</sup> and are accessible through GEO Series accession number GSE84976 (<https://www.ncbi.nlm.nih.gov/geo/query/acc.cgi?acc=GSE84976>).

### Validation

Quantitative polymerase chain reaction (qPCR) was performed, as described previously,<sup>35</sup> in duplicate on the selected genes for HLA and HLA-regulation activators, as a validation of the results found with gene-expression profiling.

In short, RNA was extracted from the fresh frozen primary tumors using an RNeasy Mini Kit (Qiagen). Complementary DNA (cDNA) was synthesized with the iScript cDNA synthesis kit (Bio-

Rad). Beacon Designer (Biosoft) was used for primer design. Primers for *ACTB* ( $\beta$ -actin; OMIM 102630), *GAPDH* (OMIM 138400), *RPL13* (OMIM 113703), and *RPS11* (OMIM 180471) were included for selecting suitable reference genes. Gene expression was calculated by normalizing the C-value of each marker to the reference genes. Reference genes were selected based on their stable expression in the tissue, which was measured with the geNorm Software.<sup>36</sup>

In the material studied, *RPL13* and *RPS11* were stably expressed, and the genes of interest were corrected for the geometric mean of these two reference genes as described previously.<sup>37</sup> For a overview of the primers used, see the supplements (S1 Table).

### Immunohistochemistry

Immunohistochemical staining for HLA class I (HLA-A, -B) and II (HLA-DR) was previously performed as described.<sup>4</sup> In short, immunohistochemical staining was carried out using the mouse monoclonal antibodies HCA2 (Produced by the Netherlands Cancer Institute, Amsterdam, the Netherlands) exclusively staining HLA-A heavy chains, HC10 (Produced by The Netherlands Cancer Institute, Amsterdam, the Netherlands) which binds to HLA-B and -C heavy chains,<sup>38,39</sup> and Tal.1B5 (DakoCytomation, Glostrup, Denmark) reacting with HLA-DR alpha chains. The number of tumor cells positive for each marker was counted at 100X magnification and expressed as percentage of the total number of tumor cells (S2 Table).

Immunofluorescence staining for infiltrating macrophages was performed and described previously, with antibodies against CD68 (clone 514H12; Abcam, Cambridge, UK) and CD163 (clone 10D6; Novocastra, Newcastle-upon-Tyne, UK), and expressed as pixels per millimeter squared.<sup>40</sup> T cells were identified and scored previously using an anti-CD3 antibody (ab828; Abcam), and expressed as numbers of cells per millimeter squared.<sup>12</sup>

### Xenografts

Fresh intraocular or metastatic human tumor samples were acquired with informed consent at the Institut Curie (Paris, France), and immediately transplanted into the interscapular fat pad of two to four non-preirradiated immunodeficient female SCID mice, and considered to be stable xenografts for characterization after three consecutive mouse-to-mouse passages.<sup>41</sup>

Total RNA was isolated from frozen material of the fresh intraocular and metastatic human tumor samples, and from frozen material of the corresponding xenografts, and subsequently analyzed with GeneChip Human Exon 1.0 ST microarrays (Affymetrix).<sup>42</sup>

Of these tumors, eight of primary and four of metastatic origin were included in our study and expression on the microarray was analyzed for *HLA-A*, *HLA-B*, *HLA-DR* (*HLA-DRA*), and *HLA-DQ* (*HLA-DQA1*, *HLA-DQA2*), and markers of infiltrating T cells: *CD3* (*CD3D*, *CD3E*), *CD4*, and *CD8* (*CD8A*, *CD8B*), and macrophages: *CD68*, and *CD163*.



### Statistics

Data analysis of the material obtained at the LUMC in Leiden was performed with the statistical programming language R version 3.0.1 (R: A Language and Environment for Statistical Computing, R Core Team, R foundation for Statistical Computing, Vienna, Austria, 2014, <http://www.R-project.org>), supplemented with specialized packages for SNP and RNA analysis. The main package used for SNP analysis was *aroma.affymetrix*,<sup>43-45</sup> supported by 'DNA-copy' (Venkatraman E. Seshan and Adam Olshen, DNACopy: DNA copy number data analysis. R package version 1.34.0), 'sfit' (Henrik Bengtsson and Pratyaksha Wirapati (2013), *sfit*: Multidimensional simplex fitting. R package version 0.3.0/r185, <http://R-Forge.R-project.org/projects/matrixstats/>), and 'R.utils' (Henrik Bengtsson (2014), *R.utils*: Various programming utilities, R package version 1.29.8, <http://CRAN.R-project.org/package=R.utils>). Data of eighty-four healthy controls served as reference set, obtained with the same Affymetrix 250K Nsp chip (Affymetrix, Santa Clara, CA, USA) by the Department of Human Genetics at our center. The 'Aroma.Affymetrix' package made it possible to use these SNP microarrays to determine copy number values.<sup>43-45</sup> The packages used for RNA microarray analysis were 'limma' version 3.16.8 and the specific packages for Illumina microarrays: 'lumi' version 2.12.0, 'annotate' (R. Gentleman, *annotate*: Annotation for microarrays, R package version 1.38.0), and 'illuminaHumanv4.db' (Mark Dunning, Andy Lynch and Matthew Eldridge, *illuminaHumanv4.db*: Illumina HumanHT12v4 annotation data (chip illuminaHumanv4), R package version 1.18.0).

Data of the xenografts and corresponding original human tumors were analyzed at the Institut Curie (Paris, France) with R software (version 2.12) at gene level using custom Brain array Chip Description Files (CDF) based on Entrez Gene database (version 13) as described in detail by Laurent et al.<sup>42</sup> For this study, a paired sub-analysis was made at the Institut Curie with regard to the genes of our interest.

All other statistical analysis was performed with SPSS 20.0.1 (IBM SPSS Statistics, IBM Corporation, Armonk, NY, US). Cumulative survival was calculated with Kaplan-Meier and its significance analyzed with the log rank test. Hazards ratios (HR) were measured with Univariate Cox regression models. Associations for clinical categorical variables with gene expression were determined using the Mann-Whitney U test (Wilcoxon rank sum test) for non-parametric analysis. Statistical correlation between two continuous variables was calculated with the Spearman's rank test. For survival analysis with Kaplan-Meier, the linear variables were dichotomized at 50% cut off, unless mentioned otherwise. Statistical significance was assumed for a p-value <0.05.

### Study approval

The collection of material and the research performed with it for this study has been agreed upon by the Medical Ethics Committee of the LUMC (Leiden University Medical Center, Leiden, the Netherlands). The research protocol adhered to Dutch law and the current version of the tenets of the Declaration of Helsinki (World Medical Association of Declaration 1964; ethical principles for medical research involving human subjects). Patients were informed about the use of their

enucleated eyes for research, and signed an informed consent prior to the enucleation. The performance of the xenograft study was in accordance with the French Ethics Committee (Ministère de l'Alimentation, de l'Agriculture et de la Pêche, Direction de la Santé et de la Protection Animale, Paris, France). Both studies were thus specifically approved by the Ethics Committee of the respective centers, the first one being the Medical Ethics Committee of the LUMC (Leiden University Medical Center, Leiden, the Netherlands) and the second one being the just mentioned French Ethics Committee (Ministère de l'Alimentation, de l'Agriculture et de la Pêche, Direction de la Santé et de la Protection Animale, Paris, France).

## Results

### HLA gene expression and HLA immunohistochemistry

We wondered whether differences that were noticed in *HLA* gene-expression assays correlated with previous immunohistochemical staining results on tumor cells and observed that the gene-expression of *HLA-A* and *-B* was significantly correlated with the percentage of tumor cells being, respectively, positive for HCA2 (*HLA-A*) and HC10 (*HLA-B/C*) (Table 1). *B2M* gene-expression correlated positively with HCA2 and HC10 staining too, although not significant for HCA2. Gene-expression of *HLA-DR* failed to correlate with monoclonal antibody Tal.1B5. Gene-expression levels of the HLA molecules in the Illumina test correlated with death due to metastases (S3 Table). When comparing clinical and histopathological parameters, gene expression of *HLA-A*, *HLA-B*, *B2M*, and *HLA-DR* was positively associated with age at enucleation and with the largest basal diameter of the tumor, a well-known adverse parameter.

The genes that code for the HLA class I and II antigens are located on chromosome 6p, which has prognostic importance in UM. In order to determine whether the level of HLA class I and II antigens was influenced by a gene-dosage effect, we determined the presence of chromosome 6 by SNP array, and compared HLA and *B2M* gene expression levels with chromosome dosage. Additionally, we examined the gene-dose effect of chromosome 3, as a previous study from our laboratory had indicated an association between loss of chromosome 3 and increased HLA expression levels on primary UM(8). An overview of the clinical, chromosomal, gene-expression, and histological data is provided in S4 Table.

### Aberrations of chromosome 3 and 6p

Aberrations of chromosome 3 and 6p were analyzed with a SNP micro-array in 28 UMs. Monosomy 3 was present in fourteen (50%) cases and associated with death due to metastases (Kaplan-Meier,  $p < 0.001$ ).

Gain of the HLA region of chromosome 6p was present in eight cases (29%), and associated with good survival (Kaplan-Meier:  $p = 0.049$ ). Gain of 6p co-occurred with monosomy 3 in only one case.

**Table 1.** Correlation of gene-expression with immunohistochemistry for HLA

Gene-expression (Illumina)	mAb HCA2 (HLA-A)		mAb HC10 (HLA-B/C)		mAb Tal.1B5 (HLA-DR)	
	<i>r</i>	<i>p</i>	<i>r</i>	<i>p</i>	<i>r</i>	<i>p</i>
<i>HLA-A</i>	.434	0.02	.545	0.003	.161	0.41
<i>HLA-B</i>	.488	0.01	.609	0.001	.286	0.14
<i>B2M</i>	.346	0.07	.508	0.006	.279	0.15
<i>HLA-DR</i>	.242	0.21	.332	0.08	.225	0.25
<i>HLA-DQ</i>	.301	0.12	.400	0.04	.172	0.38

Correlation of HLA gene-expression, as determined with the Illumina array, with the results of HLA immunohistochemical staining in 28 cases of UM. *r* = two-tailed Spearman correlation coefficient. *p* = *p*-value.

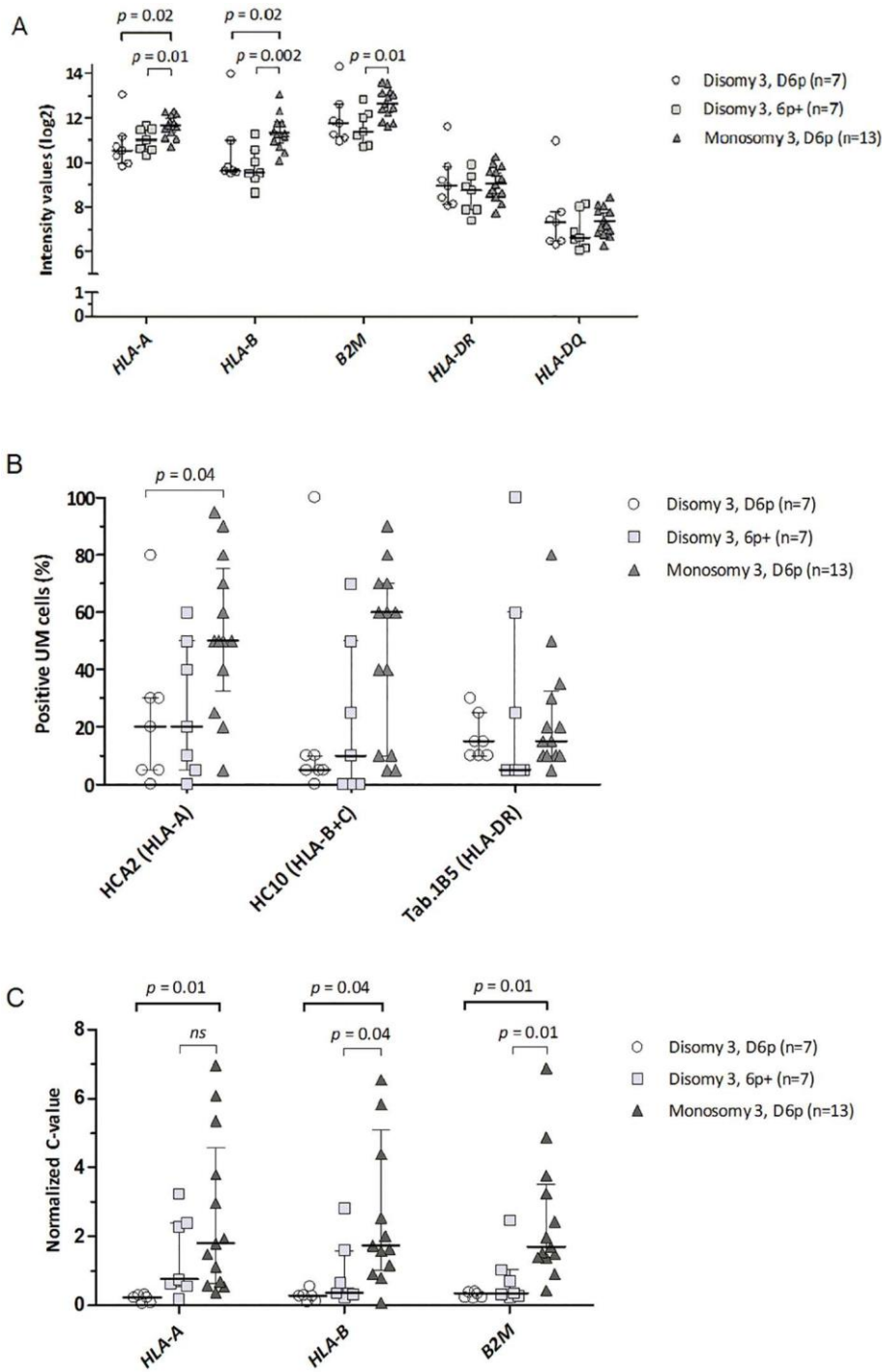
To determine a possible dose effect of chromosome 6 on HLA expression levels in UM, we investigated whether there was an association of chromosome 6p dose and gene or protein expression of HLA. Monosomy of chromosome 3 was associated with an increased gene expression of *HLA class I* and *B2M* but not of *HLA class II*. Gain of 6p occurred almost exclusively in tumors without monosomy 3, and when looking at all tumors, an association was observed between 6p gain and less *HLA-B* expression ( $p = 0.049$ ). Expression of HLA class I and II as determined by immunohistochemistry was not associated with 6p gain (*HLA-A*  $p = 0.12$ ; *HLA-B/C*  $p = 0.26$ ; *HLA-DR*  $p = 0.24$ ).

However, the effect of the loss of one copy of chromosome 3 may have overshadowed that of chromosome 6p. Therefore we separated monosomy 3 and disomy 3 tumors into those with or without gain of 6p. As the group with monosomy 3 with gain of 6p consisted of only one tumor, we did not use this case for analysis. As expected, monosomy 3 tumors showed a higher expression of HLA class I than disomy 3 tumors, at the gene-expression as well as the protein-expression level (Fig 1A and 1B). When looking at the effect of 6p gain in disomy 3 tumors, no significant differences in gene and protein expression were observed between tumors with a normal 6p ( $n = 7$ ) or a gain of 6p ( $n = 7$ ). Similarly, HLA class II gene and protein expression was not different as well. We can conclude that there is no clear dose effect of chromosome 6p on HLA class I and II expression.

#### Peptide-loading genes and HLA transcriptional regulators

As chromosomal gain of 6p had no influence on the expression levels of *HLA* genes, we questioned whether HLA expression was influenced by the peptide-loading machinery or any of the known HLA regulators.

We compared expression levels of the *HLA class I* subtypes with expression of the genes encoding the main molecules of the peptide-loading machinery, eg. with *TAP1*, *TAP2*, *tapasin* and



**Figure 1. Chromosomal aberrations and HLA expression.** Comparison between chromosomal aberrations and the expression of HLA class I and II antigens in a set of 27 primary UM. Tumors are divided according to their chromosome 3 and 6 status (disomy or monosomy of chromosome 3, and disomy of chromosome 6 or gain of 6p). HLA gene expression was determined using an Illumina microarray (A) and protein expression by immunohistochemistry (B) in UM. Additionally, HLA gene expression was determined using qPCR, which served to validate the Illumina findings (C). Four data points of the qPCR that are outside the axis limits ( $> 11$  and  $< 24$ ) are not shown (HLA-A, D3D6p: 17; HLA-B, D3D6p: 24, and M3D6p: 12; B2M, D3D6p: 13). Only significant p-values are shown, all other comparisons between the groups were not significant (p-values not shown). Error-bars represent the interquartile range. Results were obtained using the Mann-Whitney U tests.

*calreticulin*. *TAP1*-gene expression correlated positively with the gene-expression levels of *HLA class-I* and *B2M*, while *TAP2* in general showed a similar correlation, although this was not significant for all comparisons (Table 2). The other antigen-presenting machinery molecules were not co-regulated with HLA antigen expression.

We subsequently focused on the influence of known regulators of HLA gene expression. *NLRC5* is a regulator for *HLA class I* and not for *HLA class II* genes, while *CIITA* is essential for the transcriptional regulation of HLA class II genes. In contrast to *NLRC5*, *CIITA* also plays an ancillary function in the transcriptional regulation of HLA class I genes. Other known HLA regulators, influencing both class I and II, are *IRF1*, *IRF2*, and *IRF8*. When we compared expression of these HLA transcriptional regulators with HLA expression in tissue of human uveal melanoma, we observed that the gene-expression levels of the HLA transcriptional activators *IRF1* and *IRF8* correlated positively with *HLA class I* and *B2M*, *NLRC5* with *HLA-B* and *B2M* expression, and *CIITA* with *HLA-B* as well as with *B2M* (Table 2). Additionally, the gene-expression levels of *IRF1*, *IRF8*, *NLRC5* and *CIITA* correlated positively with the expression levels of both *HLA class II* subtypes, i.e. *HLA-DR* and *HLA-DQ*. *IRF1* and *IRF8* exert their function on HLA class II genes via their involvement in *CIITA* transcription.

**Table 2.** Correlation between *HLA*- gene expression and the expression of the genes encoding the HLA transcriptional regulators and peptide-loading machinery

	<i>HLA-A</i>		<i>HLA-B</i>		<i>B2M</i>					
Peptide loading machinery	<i>r</i>	<i>p</i>	<i>r</i>	<i>p</i>	<i>r</i>	<i>p</i>				
<i>TAP1</i>	.859	<0.001	.809	<0.001	.814	<0.001				
<i>TAP2</i>	.367	0.06	.350	0.07	.465	0.01				
<i>PDIA3</i>	.204	0.30	.184	0.35	.159	0.42				
<i>Tapasin</i>	.171	0.38	.135	0.50	-.038	0.85				
<i>Calreticulin</i>	-.036	0.86	.031	0.88	-.218	0.27				
	<i>HLA-A</i>		<i>HLA-B</i>		<i>B2M</i>		<i>HLA-DR</i>		<i>HLA-DQ</i>	
HLA transcriptional regulators	<i>r</i>	<i>p</i>	<i>r</i>	<i>p</i>	<i>r</i>	<i>p</i>	<i>r</i>	<i>p</i>	<i>r</i>	<i>p</i>
<i>CIITA</i>	.276	0.16	.407	0.03	.408	0.03	.415	0.03	.465	0.01
<i>NLRC5</i>	.280	0.15	.470	0.01	.389	0.04	.557	0.002	.492	0.01
<i>IRF1</i>	.758	<0.001	.854	<0.001	.853	<0.001	.828	<0.001	.852	<0.001
<i>IRF2</i>	.137	0.49	.096	0.63	.179	0.36	.032	0.87	-.085	0.67
<i>IRF8</i>	.578	0.001	.679	<0.001	.689	<0.001	.937	<0.001	.916	<0.001

Correlations based on Illumina array data. *r* = two-tailed Spearman correlation coefficient. *p* = *p*-value.

Only an increased gene-expression level of *IRF1* was associated with monosomy 3, expression levels of *IRF2*, *IRF8*, *NLRC5*, and *CIITA* were not associated (S1 Fig).

A high expression of *TAP1* and of *IRF1* was associated with death due to metastases (*TAP1*: Univariate Cox regression: HR = 1.6,  $p = 0.004$ , and Kaplan-Meier:  $p < 0.001$ ; *IRF1*: Univariate Cox regression: HR = 1.4,  $p = 0.06$ , and Kaplan-Meier:  $p = 0.007$ ). *NLRC5*, *CIITA*, *IRF2*, and *IRF8* displayed no association with survival.

### Validation

Quantitative polymerase chain reaction (qPCR) on the same 28 UMs was performed to validate our findings based on the gene-expression values obtained with Illumina HT12 v4 array for HLA class 1 genes (Fig 1C). Unfortunately, a suitable primer pair for qPCR could not be developed for *IRF8*. qPCR confirmed most of the correlations between the *HLA* genes and *TAP1*, *CIITA*, *IRF1*, and *NLRC5* (Spearman correlations, S5 Table). Using qPCR data, *TAP2* was significantly correlated with the *HLA* genes.

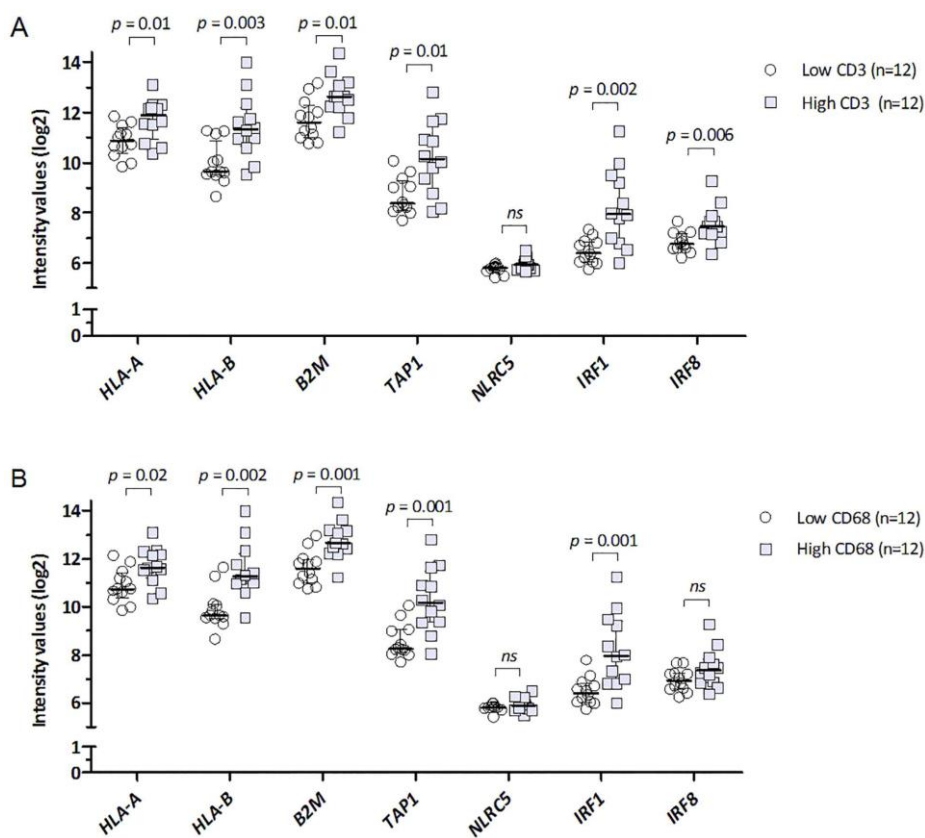
### Tumor-infiltrating immune cells

Expression of several HLA class 1 and 2 molecules, regulators of the antigen-presenting machinery, as well as several of the transcriptional regulators, are thus co-regulated in human UM samples, and the presence of most of these, showed an association with loss of one chromosome 3. We noticed that all of these molecules are part of the interferon-regulated pathway. As infiltrating cells are considered important sources of interferon and infiltrating leukocytes are also an important part of the inflammatory phenotype of UM, we compared HLA expression with infiltrating leukocyte density, using the Illumina *HLA* expression data. We looked at the presence of macrophages and CD3+ T-cells, as markers of the presence of an immune infiltrate. We separated the tumors into two groups, with a low or high infiltration, and compared expression levels of *HLA-A*, *HLA-B*, *B2M*, *TAP1*, *IRF1*, *IRF8* and *NLRC5* between these two groups. Overall, a high infiltrate was associated with increased expression of the genes related to HLA class I (Fig 2A and 2B).

### Xenografts

The clear association between the presence of infiltrating leukocytes and *HLA-A*, *HLA-B*, *TAP1*, as well as the HLA regulator genes suggests that the presence of leukocytes is associated with the level of expression of all HLA-associated molecules. However, it may be that a high HLA expression attracts leukocytes to the site of inflammation, or it may be that the HLA expression is upregulated by cytokine production from the leukocytes. These two options can be tested by comparing intraocular UM with xenografts from the same tumors in mice. When human tumors are placed as xenografts into SCID mice, they lose their infiltrating human leukocytes over time due to their limited timespan,<sup>46</sup> and any environmental effect caused by these leukocytes disappears. If the HLA expression is upregulated due to leukocyte-produced interferon, its expression should go down in a

xenograft. Twelve xenografts, consisting of eight primary tumors and four metastases of UM, were analyzed and their gene expression levels were compared with the original human tumor tissue. This allowed us to compare the effect of the absence of infiltrating human leukocytes on the expression of the genes of our interest (Fig 3). Indeed, a decrease in infiltrating T cells was observed (*Cd3E*  $p < 0.001$ , *Cd3D*  $p < 0.001$ , *Cd4*  $p < 0.001$ , *Cd8A*  $p = 0.001$ , *Cd8b*  $p = 0.34$ ). Also, the markers for macrophages, *Cd68* ( $p < 0.001$ ) and *Cd163* ( $p < 0.001$ ), were decreased in xenografts. In parallel, the xenografts showed a decrease of the HLA genes investigated, as well as of most of the peptide-loading machinery genes and transcription regulation genes (S6 Table).

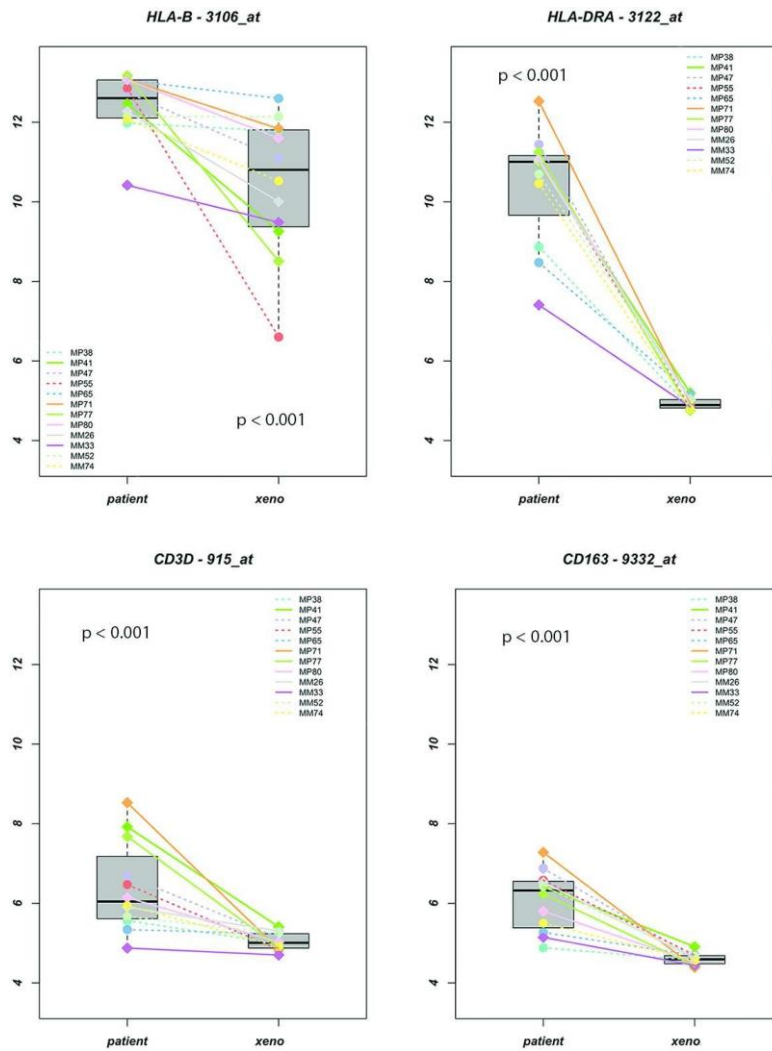


**Figure 2. Tumor infiltrating immune cells.** Association between a low or high density of tumor-infiltrating CD3+ (A), and CD68+ (B) cells and several HLA and HLA-related genes (Illumina array) in primary UM. CD3 (cells/mm<sup>2</sup>) and CD68 (pixels x 10<sup>3</sup>/mm<sup>2</sup>) scores were dichotomized at the median.

## Discussion

We found that the immune infiltrate was associated with an increased HLA-gene expression in UM. Immune infiltrate is associated with monosomy 3,<sup>4,12</sup> and loss of infiltrating human leukocytes from the xenografts in SCID mice resulted in a lower HLA class I and II gene expression. Many of the

studies on UM focus on markers predicting prognosis.<sup>3,5,7,18,40</sup> Predicting prognosis, important as it is, does not explain why and how these markers are related to an altered life expectancy. We first compared the relationship between the expression of HLA genes and aberrations of chromosome 3 and 6p, containing the HLA genes, on 28 extensively documented UM tumors.



**Figure 3. Effect of the absence of human leukocytes.** Gene-expression (log<sub>2</sub> intensity values) of HLA-B, HLA-DRA, CD3D (as marker for T-cells), and CD163 (as marker for macrophages), of the original tumors (patient) compared to the xenografts (xeno). MP's are primary tumors; MM's are metasisis.

We observed that for the *HLA class I* and *II* genes, an increased number of copies of chromosome 6p led not to a higher HLA expression, showing that UM deviate from the general rule that gain of gene copy number leads to a higher expression of those genes (Fig 1). Following the line of HLA production from the presence of its complexes on the cell membrane downwards to the amount of RNA (gene-expression) and finally to the genes located in the nuclei, two patterns could be discerned: HLA class I gene and protein levels were not related to the dose effect of



chromosome 6p, yet they were clearly and inversely associated with the dose of chromosome 3. This not only affected the HLA class I and II antigens, but also transporter molecules, such as B2M located on a different chromosome than 6, as well as HLA expression regulators. In our earlier work on the same tumors,<sup>4,12,22</sup> we had used karyograms and FISH analysis on isolated nuclei for determining the presence of monosomy 3, while in the current study we used the more precise SNP array. We here show that loss of one chromosome 3 is associated with an increased leukocytic infiltrate, and increased expression of not only the HLA class I and II molecules, but also of molecules related to the peptide-loading machinery and transcriptional regulators.

The apparently intact HLA protein production tree in UM directed us to look outside the cell for factors influencing HLA expression. The HLA transcriptional regulators are under the influence of IFNG, a cytokine often produced by lymphocytes.<sup>47</sup> IFNG can activate Janus kinase 1 and 2 (JAK1 and JAK2), which causes activation of STAT1 (signal transducer and activator of transcription 1) and IRF1, leading to induction of CIITA.<sup>26</sup> With regard to HLA class I expression, NLRC5 has been identified as the key transcriptional regulator at this level in human cells of different origin (embryonic kidney cells, HeLa cells, and Jurkat T cells).<sup>23</sup> Our current findings have been obtained on a set of 28 primary UM, and show that not only TAP1 is being upregulated together with HLA, but that *HLA class I* is upregulated together with *TAP1*, *IRF1*, *IRF8*, *NLRC5* and *CIITA*, and *HLA class II* together with *CIITA* and *IRF1*, which agrees with the previous results obtained using cell lines.<sup>27</sup>

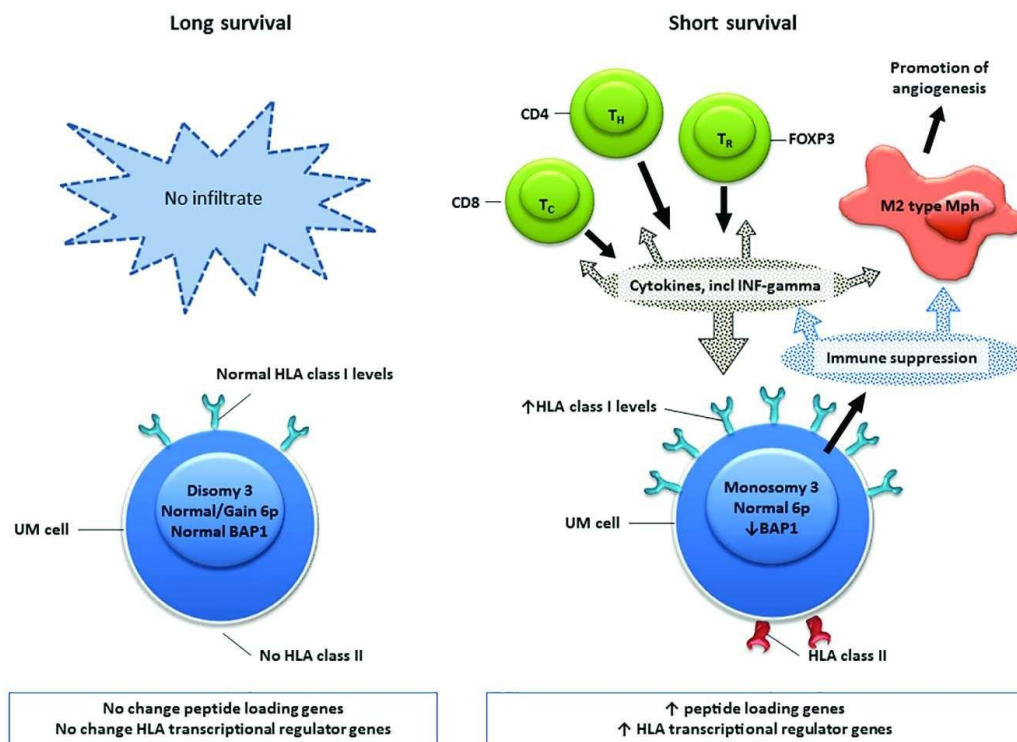
It was previously reported that EZH2 (also known as KMTase Enhancer of Zeste Homolog 2), a member of the polycomb repressive complex 2 (PRC2), is involved in blocking IFNG-induced upregulation of *CIITA* in a UM cell line.<sup>27</sup> Monosomy 3 in uveal melanoma is associated with loss of BAP1 (BRCA1 associated protein-1; chr3p),<sup>8,48</sup> which is connected to PRC2 (of which EZH2 is a member) through ASXL1 (additional sex combs-like transcriptional regulator 1).<sup>49,50</sup> This could represent a possible connection between BAP1 and expression of HLA in uveal melanoma, as study in mice showed that loss of BAP1 leads to increased levels of EZH2 (and PRC2) with repressed expression of its targets,<sup>51</sup> including thus *CIITA*, leading ultimately to less HLA class II expression. However, this is not what we found in uveal melanoma, where BAP1 loss seemed to be associated with increased HLA expression.<sup>52</sup> The general picture that emerges from the Illumina array was validated with the qPCR (Fig 2). *HLA class I* and *HLA II* are upregulated in monosomy 3 tumors, and the upregulation of HLA class I genes is positively correlated to *IRF1*, *CIITA*, and *TAP1* (and *TAP2*), while *HLA class II* is upregulated together with *IRF1*, *CIITA* and *NLRC5*. *NLRC5* is located on the same chromosome as *CIITA* (chromosome 16). Since both of these transcriptional regulators belong to the NOD-like receptor family of proteins and share some regulatory elements in their promoters, it could therefore be a co-regulatory effect that explains this finding for *NLRC5*. Some UM are known to lose copies of Chromosome,<sup>16,53</sup> so likely here is no gene dose effect.

As we were not finding clues indicating that the regulation of HLA expression was internally deranged in these UM, we aimed to find the origin of the elevated HLA expression by factors outside the UM cells. The most well-known factor is IFNG, which has previously

been shown to stimulate HLA expression in UM cell lines,<sup>28</sup> IFNG is predominantly secreted by CD4+ T helper 1 cells (Th1), CD8+ cytotoxic T cells, and NK cells, although it is also to a lower degree produced by professional antigen-presenting cells (APCs), including macrophages, and B-cells. Our data confirmed that indeed a high leukocyte infiltration of CD68+ and CD3+ leukocytes, was associated with an increase in gene expression of *HLA*, *B2M*, *TAP1*, and *IRF1*. Some of these markers may be more highly expressed at the RNA level due to the presence of leukocytes in the RNA that was used for the array and qPCR. One may suggest that the PCR data identified HLA antigens on infiltrating cells, however all original studies were performed using immunohistochemistry on tumor sections, analyzing melanoma-cell specific HLA class I and II and B2M expression. We can thus conclude that we are really looking at the HLA expression of the tumor cells themselves.

Using SCID-mice (lacking T and B cells) into which freshly-obtained UM were grafted, we observed that xenografts obtained from tumors that originally showed a high *HLA class I and II* expression, showed a much lower *HLA class I and II* expression than their original counterpart (Fig 3). The original tumors (primary and metastatic) were usually monosomic for chromosome 3 and exhibited high gene-expression levels of *CD3*, *CD4*, *CD8* (T-cell markers), and *CD68* and *CD163* (macrophages markers), as well as a high HLA class I and II gene expression. The average expression of all of these genes decreased in the xenografts, although the tumors continued to show monosomy of chromosome 3. This means that the tumor-infiltrating lymphocytes (TILs), and especially the T cells as main producers of IFNG, are the ones triggering the increased HLA expression in UM. Jehs et al. observed that UM cell lines are not producing IFNG themselves, and that upon co-culture with IFNG-secreting T cells, the UM cells were responding by synthesizing chemokines that create a tumor-promoting environment with increased HLA expression and attraction of M2 type macrophages.<sup>54</sup> Indeed, the T cell-containing primary UMs as well as the xenografts contained high numbers of macrophages. Following xenografting, a decrease in gene-expression of *CD68* was observed.

Although the question remains how these T cells are exactly recruited to the tumor, and whether they do or do not recognize the peptides presented in the HLA molecules, all these data together indicate that the presence of an infiltrate is a bad prognostic parameter in uveal melanoma. Several studies have shown that UM contain Foxp3-positive regulator cells, which may inhibit effective CTL function.<sup>12,55</sup> An interesting option is to specifically deplete these regulator T cells. A recent study in a mouse model showed that attacking a T-reg specific kinase may help bring back CTLs, which subsequently kill the tumor cells.<sup>56</sup> As T cells may produce factors that bring in macrophages,<sup>54</sup> T-cell depletion may also reduce macrophages density, and this may subsequently influence the development of the primary tumor or metastases, as the presence of macrophages is related to angiogenesis and most of the macrophages in UM are of the pro-angiogenic M2 type.<sup>40</sup> This and other T-cell based therapies will only work when there is a proper functioning HLA system present, which we have shown here to be the case.



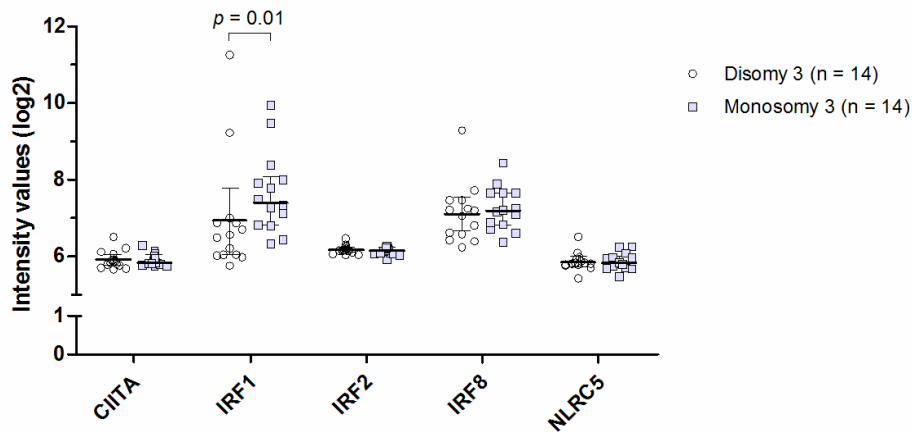
**Figure 4. Schematic illustration of tumor characteristics and infiltrate.** UM with monosomy 3 attract an infiltrate, producing different cytokines, including Interferon-gamma. The tumor cell (UM cell) responds by increasing HLA class I and II levels, as well as rendering the infiltrating immune cells ineffective (immune suppression) and creating a tumor-favorable environment, with amongst others, stimulation of angiogenesis.

In summary, we show that in primary UM, there is no gene-dose effect of chromosome 6p with regard to HLA expression nor a general abnormal internal regulation of HLA expression. We provide evidence for a co-regulated upregulation of genes encoding for HLA transcriptional regulators, peptide-loading machinery, and HLA proteins on the cell surface, which we attribute to the presence of tumor-infiltrating T cells, secreting IFNG (Fig 4). This indicates a proper function antigen presenting system, which one would not expect, as likely the most common method a tumor deploys for immune evasion is reducing their antigen expression by down regulation of HLA molecules,<sup>57,58</sup> or altering the subtypes of HLA molecules expressed.<sup>59</sup> In earlier work we also showed that this latter is not the case.<sup>30</sup> Together, our data indicates that UM contain a proper functioning HLA antigen expression system, which should allow T-cell mediated tumor cell killing.

#### Acknowledgments

We like to thank W.G.M. Kroes, MSc, and C. Ruivenkamp, PhD, of the Center for Human and Clinical Genetics, LUMC, for their much appreciated work and valuable expertise on performing the SNP arrays.

## Supporting Information



**S1 Figure. Chromosome 3 status and gene-expression (Illumina array data) of several HLA regulators.** Only significant p-values are shown, all other comparisons between the groups were not significant (p-values not shown). Error-bars represent the interquartile range. Results were obtained using the Mann-Whitney U tests.

**S1 Table.** An overview of the primers used for the validation with qPCR.

Primers	Forward	Reverse
<i>Beta-Actin</i>	CGGGACCTGACTGACTACCTC	CTCCTTAATGTCACGCACGATTC
<i>GAPDH</i>	GCACAGCCACAGGTTTC	CAGGCGGAGGACAGGATG
<i>RPL13</i>	GTACGCTGTGAAGGCATCAAC	GGTTGGTGTTTCCGCTTG
<i>RPS11</i>	AAGCAGCCGACCATCTTTCA	CGGGAGCTTCTCCTTGCC
<i>HLA-A</i>	TGTGTTCTGTAGGCATA	TTGAGACAGAGATGGAGAC
<i>HLA-B</i>	CTCCATCTGTCTCAACTT	CATCAACCTTCATAGCA
<i>B2M</i>	TGCTGTCTCCATGTTTGATGTATCT	TCTCTGCTCCACCTCTAAGT
<i>HLA-DR</i>	CAAAGAAGGAGACGGTCTGG	GGCTCTCAGTCCACAGG
<i>HLA-DQ</i>	TGATGGAGATGAGCAGTTC	GCAGCGGTAGAGTTGTAG
<i>CIITA(-PIII)</i>	GCTGGGATTCCTACACAATGC	TCTCCAGCCAGGTCCATCTG
<i>IRF1</i>	TCACCAAGAACCAGAGAA	TCCATCAGAGAAGGTATCAG
<i>NLRC5</i>	CTGGAGGAGTTGATGCTT	GATGGCTGAATGGTAGGT
<i>TAP1</i>	CGAAGCCCAGAAGTTTAG	CCACCAATGTAGAGGATTC
<i>TAP2</i>	CTATTCTGGTCGTGTGATTG	CTGTCTTAGTCTCTGGAA

**S2 Table.** Percentage of tumor cells staining positive for the monoclonal antibodies for HLA-A, HLA-B or HLA-DR.

Tumor nr.	mAb HCA2 (HLA-A)	mAb HC10 (HLA-B/C)	mAb Tal.1B5 (HLA-DR)
01-042	0	5	10
01-074	40	25	60
01-091	50	60	10
01-129	80	100	30
01-131	50	60	20
02-158	0	0	5
02-167	70	90	15
02-174	20	70	5
02-199	30	10	15
03-086	30	5	25
03-087	5	0	5
03-120	50	70	100
03-129	60	5	10
04-018	20	10	15
04-035	80	70	15
04-074	5	5	10
04-075	60	50	25
04-103	20	10	5
04-112	50	40	10
20-005	90	60	10
20-042	25	25	5
20-125	10	0	5
20-128	50	40	50
20-173	40	5	80
20-178	25	10	35
99-184	5	10	20
99-187	5	0	10
99-239	95	80	30

**S3 Table.** Hazard ratio's (Univariate Cox-regression) of death due to metastasis for HLA gene expression as determined by the Illumina array.

Gene-expression array log2 intensity values (n=28)	Mean		HR ( <i>p</i> -value)	95% conf. interval
	(median)	±SD		
<i>HLA-A</i>	11.3 (11.4)	0.8	2.7 (0.003)	1.4-5.2
<i>HLA-B</i>	10.7 (10.8)	1.2	1.7 (0.004)	1.2-2.4
<i>B2M</i>	12.2 (12.2)	0.9	2.1 (0.01)	1.2-3.7
<i>HLA-DR</i>	9.0 (8.9)	0.9	1.4 (0.16)	0.9-2.4
<i>HLA-DQ</i>	7.3 (7.1)	1.0	1.3 (0.21)	0.9-1.9

HR = hazard ratio

**S4 Table.** Characteristics of study population, with hazard ratio's (HR) for death due to metastasis.

Categorical variables	Baseline Data				Associations with gene-expr. (mean)				
	N	%	HR ( <i>p</i> -value)	95% conf. interval	<i>HLA-A</i>	<i>HLA-B</i>	<i>B2M</i>	<i>HLA-DR</i>	<i>HLA-DQ</i>
Patient gender									
Male	15	54	0.7 (0.60)	0.3-2.2	11.3	10.8	12.1	9.1	7.5
Female	13	46	1.3 (0.60)	0.4-4.0	11.3	10.7	12.3	8.8	7.1
<i>p</i> -values					1.00	0.72	0.50	0.47	0.41
Prognostic groups									
Stage I & IIA	8	28	-		11.1	10.6	11.9	8.9	7.3
Stage IIB	10	36	4.4 (0.18)	0.5-30.6	11.3	10.6	12.2	9.0	7.3
Stage IIIA	8	29	14.1 (0.01)	1.7-117.9	11.6	11.3	12.7	9.1	7.2
Stage IIIB	2	7	5.1 (0.25)	0.3-82.8	11.1	10.2	12.0	9.2	7.7
<i>p</i> -values					0.33	0.43	0.25	0.76	0.60
Cell type									
Spindle	10	36	0.2 (0.44)	0.1-1.0	11.0	10.3	11.9	8.9	7.2
Mixed/Epithelioid	18	64	4.7 (0.44)	1.0-21.6	11.5	11.0	12.4	9.0	7.4
<i>p</i> -values					0.09	0.13	0.21	0.91	0.83
Chromosome 3									
Normal	14	50	0.04 (0.003)	0.01-0.35	10.1	10.1	11.8	8.9	7.2
Loss	14	50	22.6 (0.003)	2.9-176.1	11.7	11.4	12.6	9.1	7.4
<i>p</i> -values					0.002	0.001	0.01	0.35	0.23

Chromosome 6p (HLA loci)									
Normal	20	71	6.0 (0.09)	0.8-46.4	11.4	11.0	12.4	9.1	7.4
Gain	8	29	0.2 (0.09)	0.02-1.3	11.2	10.1	11.7	8.7	7.0
<i>p-values</i>					0.47	0.049	0.09	0.38	0.47
Associations with gene-expr. ( <i>p</i> -value)									
Numerical variables	Mean (median)	±SD	HR ( <i>p</i> -value)	95% conf. interval	HLA-A	HLA-B	B2M	HLA-DR	HLA-DQ
Age at enucleation (years) (n=28)	62 (68)	15	1.0 (0.26)	1.0-1.1	0.046	0.008	0.001	0.02	0.15
LBD (mm) (n=28)	14 (15)	3	1.4 (0.01)	1.1-1.7	0.03	0.04	0.01	0.02	0.01
Prominence (mm) (n=28)	7 (7)	3	1.1 (0.58)	0.9-1.3	0.99	0.62	0.77	0.86	0.89

Baseline characteristics of patients and histological of 28 cases of primary UM, obtained by enucleation. The gene expression values of the indicated genes were determined by the Illumina array.

Tumor size (Largest Basal Diameter and Prominence) has been an important prognostic factor for a long time. LBD = Largest Basal Diameter; HR = hazard ratio (Univariate cox regression).

Wilcoxon rank sum test (Mann-Whitney U) was used for comparing two categories, and the Kruskal Wallis Test was used for comparing more than two categories. *P*-values for associations with numerical data were calculated with Spearman's correlation (two tailed).

**S5 Table.** qPCR confirmation of the correlations found with the Illumina data, between expression values of HLA regulator genes and TAP1/TAP2, with HLA genes.

	HLA-A		HLA-B		B2M		HLA-DR		HLA-DQ	
	<i>r</i>	<i>p</i>	<i>r</i>	<i>p</i>	<i>r</i>	<i>p</i>	<i>r</i>	<i>p</i>	<i>r</i>	<i>p</i>
HLA transcriptional regulators										
<i>CIITA</i>	.437	0.02	.626	<u>&lt;0.001</u>	.461	<u>0.02</u>	.615	<u>&lt;0.001</u>	.430	<u>0.02</u>
<i>IRF1</i>	.527	<u>0.001</u>	.440	<u>0.02</u>	.591	<u>0.001</u>	.819	<u>&lt;0.001</u>	.601	<u>0.001</u>
<i>NLRC5</i>	.331	<u>0.09</u>	.177	0.37	.363	0.06	.544	<u>0.003</u>	.539	<u>0.003</u>
Peptide loading machinery										
<i>TAP1</i>	.824	<u>&lt;0.001</u>	.744	<u>&lt;0.001</u>	.878	<u>&lt;0.001</u>				
<i>TAP2</i>	.537	0.003	.446	0.02	.536	<u>0.003</u>				

Underlined values confirmed the Illumina-array results. *r* = two-tailed Spearman correlation coefficient. *p* = *p*-value.

**S6 Table.** Changes in mean expression of gene expression levels for markers identifying infiltrating cells, HLA genes, HLA regulator genes, peptide-loading machinery genes, and cytokines.

Marker	Human		Delta	SD		P-values
	tumor	Xenograft	Human tumor-Xenograft	Human tumors	SD xenografts	
<i>CD3D</i>	6.39	5.05	1.35	1.12	0.22	< 0.001
<i>CD3E</i>	5.84	4.57	1.27	1.07	0.15	< 0.001
<i>CD4</i>	7.14	5.90	1.24	0.75	1.09	< 0.001
<i>CD8A</i>	7.52	6.61	0.91	0.84	0.16	0.001
<i>CD8B</i>	5.30	5.17	0.13	0.26	0.11	0.34
<i>CD68</i>	10.62	9.22	1.39	0.60	1.05	< 0.001
<i>CD163</i>	6.08	4.60	1.48	0.75	0.14	< 0.001
<i>HLA-A</i>	11.54	10.54	1.0	0.59	1.15	0.005
<i>HLA-B</i>	12.44	10.45	1.99	0.77	1.76	< 0.001
<i>B2M</i>	10.98	9.68	1.30	0.72	0.92	0.004
<i>HLA-DRA</i>	10.44	4.94	5.50	1.45	0.15	< 0.001
<i>HLA-DQA1</i>	7.25	4.18	3.07	2.09	0.19	< 0.001
<i>HLA-DQA2</i>	5.41	4.82	0.59	0.41	0.23	0.002
<i>IRF1</i>	7.61	6.38	1.23	0.87	0.23	< 0.001
<i>IRF2</i>	9.21	8.85	0.36	0.37	0.38	0.046
<i>IRF8</i>	7.09	5.43	1.66	0.84	0.17	< 0.001
<i>CIITA</i>	7.46	6.24	1.22	0.77	0.22	< 0.001
<i>NLRCS</i>	7.80	6.89	0.90	0.67	0.36	0.002
<i>PDIA3</i>	7.02	7.03	-0.01	0.25	0.22	0.93
<i>TAP1</i>	10.13	8.76	1.36	1.04	0.99	0.005
<i>TAP2</i>	8.88	8.13	0.75	0.74	0.52	0.02
<i>Tapasin</i>	10.30	9.58	0.72	0.49	0.56	0.004
<i>Calreticulin</i>	10.78	10.83	-0.05	0.16	0.17	0.54
<i>IFNG</i>	4.11	3.85	0.26	0.29	0.11	0.005
<i>CCL2</i>	7.87	5.93	1.94	1.33	0.81	< 0.001
<i>TGFB1</i>	7.84	6.91	0.92	0.54	0.63	< 0.001
<i>TGFB2</i>	6.96	6.77	0.19	0.78	1.41	0.14
<i>TGFB3</i>	7.04	6.55	0.49	0.77	0.41	0.08
<i>TNF</i>	5.79	5.71	0.08	0.35	0.17	0.40

The gene-expression was determined with the Affymetrix array in 12 primary human uveal melanoma/metastases and their corresponding xenograft in a mouse.

P-values have been calculated with the Wilcoxon-signed rank test.



## References

1. Singh AD, Turell ME, Topham AK. Uveal melanoma: trends in incidence, treatment, and survival. *Ophthalmology* 2011 Sep; 118(9):1881–5. doi: 10.1016/j.ophtha.2011.01.040 PMID: 21704381
2. Kujala E, Makitie T, Kivela T. Very long-term prognosis of patients with malignant uveal melanoma. *Invest Ophthalmol Vis Sci* 2003 Nov; 44(11):4651–9. PMID: 14578381
3. Onken MD, Worley LA, Ehlers JP, Harbour JW. Gene expression profiling in uveal melanoma reveals two molecular classes and predicts metastatic death. *Cancer Res* 2004 Oct 15; 64(20):7205–9. doi: 10.1158/0008-5472.CAN-04-1750 PMID: 15492234
4. Maat W, Ly LV, Jordanova ES, De Wolff-Rouendaal D, Schalijs-Delfos NE, Jager MJ. Monosomy of chromosome 3 and an inflammatory phenotype occur together in uveal melanoma. *Invest Ophthalmol Vis Sci* 2008 Feb; 49(2):505–10. doi: 10.1167/iovs.07-0786 PMID: 18234992
5. Scholes AG, Damato BE, Nunn J, Hiscott P, Grierson I, Field JK. Monosomy 3 in uveal melanoma: correlation with clinical and histologic predictors of survival. *Invest Ophthalmol Vis Sci* 2003 Mar; 44(3):1008–11. PMID: 12601021
6. White VA, Chambers JD, Courtright PD, Chang WY, Horsman DE. Correlation of cytogenetic abnormalities with the outcome of patients with uveal melanoma. *Cancer* 1998 Jul 15; 83(2):354–9. PMID:9669819
7. Harbour JW. Molecular prognostic testing and individualized patient care in uveal melanoma. *Am J Ophthalmol* 2009 Dec; 148(6):823–9. doi: 10.1016/j.ajo.2009.07.004 PMID: 19800609
8. Coupland SE, Lake SL, Zeschnigk M, Damato BE. Molecular pathology of uveal melanoma. *Eye (Lond)* 2013 Feb; 27(2):230–42.
9. van Beek JG, Koopmans AE, Vaarwater J, de Rooij JJ, Paridaens D, Naus NC, et al. The prognostic value of extraocular extension in relation to monosomy 3 and gain of chromosome 8q in uveal melanoma. *Invest Ophthalmol Vis Sci* 2014; 55(3):1284–91. doi: 10.1167/iovs.13-13670 PMID: 24508790
10. Versluis M, de Lange MJ, van Pelt SI, Ruivenkamp CA, Kroes WG, Cao J, et al. Digital PCR validates 8q dosage as prognostic tool in uveal melanoma. *PLoS One* 2015; 10(3):e0116371. doi: 10.1371/journal.pone.0116371 PMID: 25764247
11. Niederkorn JY, Wang S. Immunology of intraocular tumors. *Ocul Immunol Inflamm* 2005 Feb; 13(1):105–10. PMID: 15835077
12. Bronkhorst IH, Vu TH, Jordanova ES, Luyten GP, Burg SH, Jager MJ. Different subsets of tumor-infiltrating lymphocytes correlate with macrophage influx and monosomy 3 in uveal melanoma. *Invest Ophthalmol Vis Sci* 2012 Aug; 53(9):5370–8. doi: 10.1167/iovs.11-9280 PMID: 22743317
13. Colotta F, Allavena P, Sica A, Garlanda C, Mantovani A. Cancer-related inflammation, the seventh hallmark of cancer: links to genetic instability. *Carcinogenesis* 2009 Jul; 30(7):1073–81. doi: 10.1093/carcin/bgp127 PMID: 19468060
14. Ericsson C, Seregard S, Bartolazzi A, Levitskaya E, Ferrone S, Kiessling R, et al. Association of HLA class I and class II antigen expression and mortality in uveal melanoma. *Invest Ophthalmol Vis Sci* 2001 Sep; 42(10):2153–6. PMID: 11527924
15. Jager MJ, Hurks HM, Levitskaya J, Kiessling R. HLA expression in uveal melanoma: there is no rule without some exception. *Hum Immunol* 2002 Jun; 63(6):444–51. PMID: 12039519

16. Blom DJ, Schurmans LR, de Waard-Siebinga I, De Wolff-Rouendaal D, Keunen JE, Jager MJ. HLA expression in a primary uveal melanoma, its cell line, and four of its metastases. *Br J Ophthalmol* 1997 Nov; 81(11):989–93. PMID: 9505825
17. Ma D, Niederkorn JY. Transforming growth factor-beta down-regulates major histocompatibility complex class I antigen expression and increases the susceptibility of uveal melanoma cells to natural killer cell-mediated cytotoxicity. *Immunology* 1995 Oct; 86(2):263–9. PMID: 7490128
18. Blom DJ, Luyten GP, Mooy C, Kerkvliet S, Zwinderman AH, Jager MJ. Human leukocyte antigen class I expression. Marker of poor prognosis in uveal melanoma. *Invest Ophthalmol Vis Sci* 1997 Aug; 38(9):1865–72. PMID: 9286277
19. Mine KL, Shulzhenko N, Yambartsev A, Rochman M, Sanson GF, Lando M, et al. Gene network reconstruction reveals cell cycle and antiviral genes as major drivers of cervical cancer. *Nat Commun* 2013; 4:1806. doi: 10.1038/ncomms2693 PMID: 23651994
20. Aure MR, Steinfeld I, Baumbusch LO, Liestol K, Lipson D, Nyberg S, et al. Identifying in-trans process associated genes in breast cancer by integrated analysis of copy number and expression data. *PLoS One* 2013; 8(1):e53014. doi: 10.1371/journal.pone.0053014 PMID: 23382830
21. Hurks HM, Metzelaar-Blok JA, Mulder A, Claas FH, Jager MJ. High frequency of allele-specific downregulation of HLA class I expression in uveal melanoma cell lines. *Int J Cancer* 2000 Mar 1; 85(5):697–702. PMID: 10699951
22. Metzelaar-Blok JA, Jager MJ, Moghaddam PH, van der Slik AR, Giphart MJ. Frequent loss of heterozygosity on chromosome 6p in uveal melanoma. *Hum Immunol* 1999 Oct; 60(10):962–9. PMID: 10566596
23. Meissner TB, Li A, Biswas A, Lee KH, Liu YJ, Bayir E, et al. NLR family member NLRC5 is a transcriptional regulator of MHC class I genes. *Proc Natl Acad Sci USA* 2010 Aug 3; 107(31):13794–9. doi: 10.1073/pnas.1008684107 PMID: 20639463
24. Chang CH, Guerder S, Hong SC, van EW, Flavell RA. Mice lacking the MHC class II transactivator (CIITA) show tissue-specific impairment of MHC class II expression. *Immunity* 1996 Feb; 4(2):167–78. PMID: 8624807
25. Gobin SJ, Peijnenburg A, Keijsers V, van den Elsen PJ. Site alpha is crucial for two routes of IFN gamma-induced MHC class I transactivation: the ISRE-mediated route and a novel pathway involving CIITA. *Immunity* 1997 May; 6(5):601–11. PMID: 9175838
26. Kobayashi KS, van den Elsen PJ. NLRC5: a key regulator of MHC class I-dependent immune responses. *Nat Rev Immunol* 2012 Dec; 12(12):813–20. doi: 10.1038/nri3339 PMID: 23175229
27. Holling TM, Bergevoet MW, Wilson L, van Eggermond MC, Schooten E, Steenbergen RD, et al. A role for EZH2 in silencing of IFN-gamma inducible MHC2TA transcription in uveal melanoma. *J Immunol* 2007 Oct 15; 179(8):5317–25. PMID: 17911618
28. de Waard-Siebinga I, Creyghton WM, Kool J, Jager MJ. Effects of interferon alfa and gamma on human uveal melanoma cells in vitro. *Br J Ophthalmol* 1995 Sep; 79(9):847–55. PMID: 7488605
29. McMichael AJ. Lymphocytes. 1. Function. Genetic restrictions in the immune response. *J Clin Pathol Suppl (R Coll Pathol)* 1979; 13:30–8.
30. van Essen TH, Bronkhorst IH, Maat W, Verduyn W, Roelen DL, Luyten GP, et al. A comparison of HLA genotype with inflammation in uveal melanoma. *Invest Ophthalmol Vis Sci* 2012 May; 53(6):2640–6. doi: 10.1167/iops.11-8901 PMID: 22447860

31. van den Elsen PJ. Expression regulation of major histocompatibility complex class I and class II encoding genes. *Front Immunol* 2011; 2:48. doi: 10.3389/fimmu.2011.00048 PMID: 22566838
32. McCutcheon JA, Gumperz J, Smith KD, Lutz CT, Parham P. Low HLA-C expression at cell surfaces correlates with increased turnover of heavy chain mRNA. *J Exp Med* 1995 Jun 1; 181(6):2085–95. PMID: 7760000
33. Bunce M, Welsh KI. Rapid DNA typing for HLA-C using sequence-specific primers (PCR-SSP): identification of serological and non-serologically defined HLA-C alleles including several new alleles. *Tissue Antigens* 1994 Jan; 43(1):7–17. PMID: 7912861
34. Edgar R, Domrachev M, Lash AE. Gene Expression Omnibus: NCBI gene expression and hybridization array data repository. *Nucleic Acids Res* 2002 Jan 1; 30(1):207–10. PMID: 11752295
35. El Filali M, Homminga I, Maat W, van der Velden PA, Jager MJ. Triamcinolone acetonide and anecortave acetate do not stimulate uveal melanoma cell growth. *Mol Vis* 2008; 14:1752–9. PMID: 18836566
36. Goossens K, Van Poucke M, Van Soom A, Vandesompele J, Van Zeveren A, Peelman LJ. Selection of reference genes for quantitative real-time PCR in bovine preimplantation embryos. *BMC Dev Biol* 2005; 5:27. doi: 10.1186/1471-213X-5-27 PMID: 16324220
37. Vandesompele J, De Preter K, Pattyn F, Poppe B, Van Roy N, De Paepe A, et al. Accurate normalization of real-time quantitative RT-PCR data by geometric averaging of multiple internal control genes. *Genome Biol* 2002 Jun 18; 3(7):RESEARCH0034. PMID: 12184808
38. Seitz C, Uchanska-Ziegler B, Zank A, Ziegler A. The monoclonal antibody HCA2 recognises a broadly shared epitope on selected classical as well as several non-classical HLA class I molecules. *Mol Immunol* 1998 Sep; 35(13):819–27. PMID: 9839550
39. Stam NJ, Spits H, Ploegh HL. Monoclonal antibodies raised against denatured HLA-B locus heavy chains permit biochemical characterization of certain HLA-C locus products. *J Immunol* 1986 Oct 1; 137(7):2299–306. PMID: 3760563
40. Bronkhorst IH, Ly LV, Jordanova ES, Vrolijk J, Versluis M, Luyten GP, et al. Detection of M2-macrophages in uveal melanoma and relation with survival. *Invest Ophthalmol Vis Sci* 2011 Feb; 52(2):643–50. doi: 10.1167/iovs.10-5979 PMID: 20811059
41. Nemati F, Sastre-Garau X, Laurent C, Couturier J, Mariani P, Desjardins L, et al. Establishment and characterization of a panel of human uveal melanoma xenografts derived from primary and/or metastatic tumors. *Clin Cancer Res* 2010 Apr 15; 16(8):2352–62. doi: 10.1158/1078-0432.CCR-09-3066 PMID: 20371695
42. Laurent C, Gentien D, Piperno-Neumann S, Nemati F, Nicolas A, Tesson B, et al. Patient-derived xenografts recapitulate molecular features of human uveal melanomas. *Mol Oncol* 2013 Jun; 7(3):625–36. doi: 10.1016/j.molonc.2013.02.004 PMID: 23478236
43. Bengtsson H, Simpson K, Bullard J, Hansen K. aroma.affymetrix: A generic framework in R for analyzing small to very large Affymetrix data sets in bounded memory. Tech Report #745, Department of Statistics, University of California, Berkeley 2012 Feb.
44. Bengtsson H, Irizarry R, Carvalho B, Speed TP. Estimation and assessment of raw copy numbers at the single locus level. *Bioinformatics* 2008 Mar 15; 24(6):759–67. doi: 10.1093/bioinformatics/btn016 PMID: 18204055

45. Bengtsson H, Wirapati P, Speed TP. A single-array preprocessing method for estimating full-resolution raw copy numbers from all Affymetrix genotyping arrays including GenomeWideSNP 5 & 6. *Bioinformatics* 2009 Sep 1; 25(17):2149–56. doi: 10.1093/bioinformatics/btp371 PMID: 19535535
46. Daniels VG, Wheeler PR, Burkitt HG. *Functional histology: A text and colour atlas*. Edinburgh: Churchill Livingstone; 1979.
47. Seliger B. Different regulation of MHC class I antigen processing components in human tumors. *J Immunotoxicol* 2008 Oct; 5(4):361–7. doi: 10.1080/15476910802482870 PMID: 19404870
48. Harbour JW, Onken MD, Roberson ED, Duan S, Cao L, Worley LA, et al. Frequent mutation of BAP1 in metastasizing uveal melanomas. *Science* 2010 Dec 3; 330(6009):1410–3. doi: 10.1126/science.1194472 PMID: 21051595
49. Scheuermann JC, de Ayala Alonso AG, Oktaba K, Ly-Hartig N, McGinty RK, Fraterman S, et al. Histone H2A deubiquitinase activity of the Polycomb repressive complex PR-DUB. *Nature* 2010 May 13; 465(7295):243–7. doi: 10.1038/nature08966 PMID: 20436459
50. Carbone M, Yang H, Pass HI, Krausz T, Testa JR, Gaudino G. BAP1 and cancer. *Nat Rev Cancer* 2013 Mar; 13(3):153–9. PMID: 23550303
51. LaFave LM, Beguelin W, Koche R, Teater M, Spitzer B, Chramiec A, et al. Loss of BAP1 function leads to EZH2-dependent transformation. *Nat Med* 2015 Nov; 21(11):1344–9. doi: 10.1038/nm.3947 PMID: 26437366
52. van Essen TH, van Pelt SI, Versluis M, Bronkhorst IH, van Duinen SG, Marinkovic M, et al. Prognostic parameters in uveal melanoma and their association with BAP1 expression. *Br J Ophthalmol* 2014 Dec; 98(12):1738–43. doi: 10.1136/bjophthalmol-2014-305047 PMID: 25147369
53. Kilic E, van GW, Lodder E, Beverloo HB, van Til ME, Mooy CM, et al. Clinical and cytogenetic analyses in uveal melanoma. *Invest Ophthalmol Vis Sci* 2006 Sep; 47(9):3703–7. doi: 10.1167/iovs.06-0101 PMID: 16936076
54. Jehs T, Faber C, Juel HB, Bronkhorst IH, Jager MJ, Nissen MH. Inflammation-induced chemokine expression in uveal melanoma cell lines stimulates monocyte chemotaxis. *Invest Ophthalmol Vis Sci* 2014 Aug; 55(8):5169–75. doi: 10.1167/iovs.14-14394 PMID: 25074768
55. Mougiakakos D, Johansson CC, Trocme E, All-Ericsson C, Economou MA, Larsson O, et al. Intratumoral forkhead box P3-positive regulatory T cells predict poor survival in cyclooxygenase-2-positive uveal melanoma. *Cancer* 2010 May 1; 116(9):2224–33. doi: 10.1002/cncr.24999 PMID: 20209608
56. Ali K, Soond DR, Pineiro R, Hagemann T, Pearce W, Lim EL, et al. Inactivation of PI(3)K p110delta breaks regulatory T-cell-mediated immune tolerance to cancer. *Nature* 2014 Jun 19; 509(7505):407–11.
57. Poggi A, Zocchi MR. Mechanisms of tumor escape: role of tumor microenvironment in inducing apoptosis of cytolytic effector cells. *Arch Immunol Ther Exp (Warsz)* 2006 Sep; 54(5):323–33.
58. Cavallo F, De GC, Nanni P, Forni G, Lollini PL. 2011: the immune hallmarks of cancer. *Cancer Immunol Immunother* 2011 Mar; 60(3):319–26. doi: 10.1007/s00262-010-0968-0 PMID: 21267721
59. Garcia-Lora A, Algarra I, Garrido F. MHC class I antigens, immune surveillance, and tumor immune escape. *J Cell Physiol* 2003 Jun; 195(3):346–55. doi: 10.1002/jcp.10290 PMID: 12704644