



Universiteit
Leiden
The Netherlands

Shear stress regulated signaling in renal epithelial cells and polycystic kidney disease

Kunnen, S.J.

Citation

Kunnen, S. J. (2018, September 27). *Shear stress regulated signaling in renal epithelial cells and polycystic kidney disease*. Retrieved from <https://hdl.handle.net/1887/66002>

Version: Not Applicable (or Unknown)

License: [Licence agreement concerning inclusion of doctoral thesis in the Institutional Repository of the University of Leiden](#)

Downloaded from: <https://hdl.handle.net/1887/66002>

Note: To cite this publication please use the final published version (if applicable).

Cover Page



Universiteit Leiden



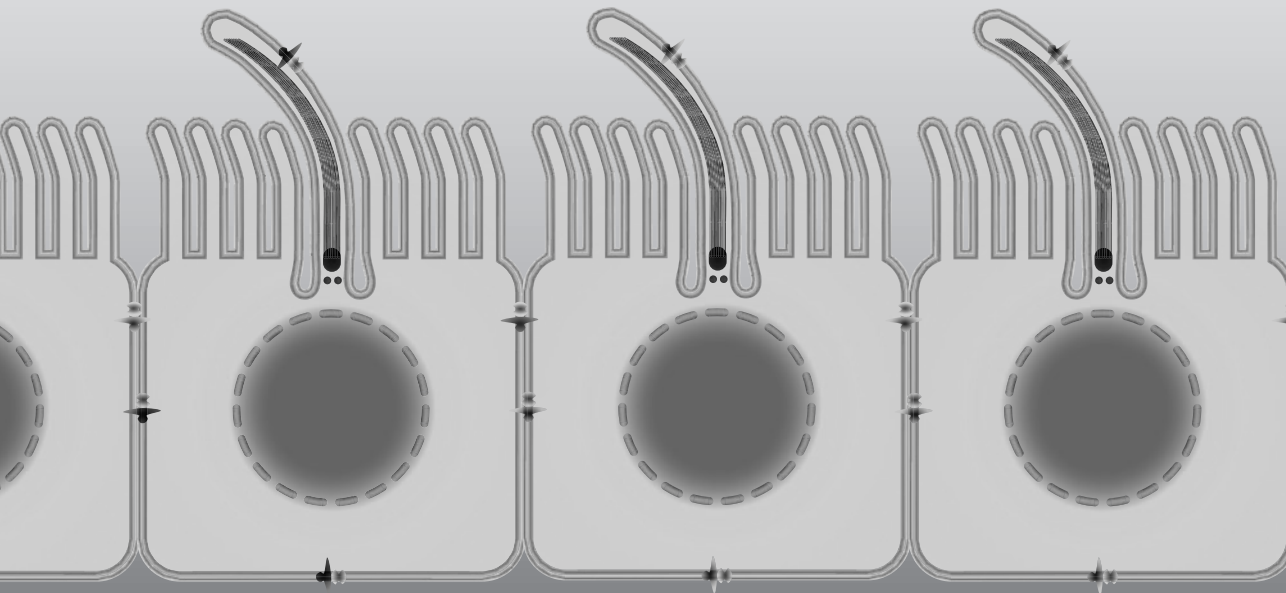
The handle <http://hdl.handle.net/1887/66002> holds various files of this Leiden University dissertation.

Author: Kunnen, S.J.

Title: Shear stress regulated signaling in renal epithelial cells and polycystic kidney disease

Issue Date: 2018-09-27

APPENDIX



LIST OF ABBREVIATIONS

ACVR1	Activin A Receptor Type 1
ADPKD	Autosomal dominant polycystic kidney disease
ANOVA	Analysis of variance
ALK	Activin receptor like kinase
AS	Ammonium sulfate
BBS	Bardet-Biedl syndrome
BMP	Bone morphogenetic proteins
cAMP	Cyclic adenosine monophosphate
cKO	Conditional knock-out
CPM	Counts per million
CDH1	Cadherin-1
COL1A1	Collagen, type I, alpha 1
COX2	Cyclo-oxygenase-2
DEG	Differentially expressed genes
DPBS	Dulbecco's phosphate-buffered saline
ECM	Extracellular matrix
EGFR	Epidermal growth factor receptor
ELISA	Enzyme-linked immunosorbent assay
EMT	Epithelial-to-mesenchymal transition
ERK	Extracellular signal-regulated kinase
ESRD	End stage renal disease
FDR	False discovery rate
Fn1	Fibronectin 1
GFR	Glomerular filtration rate
GPCR	G-protein coupled receptors
Hh	Hedgehog
HPRT	Hypoxanthine-guanine phosphoribosyltransferase
IFT	Intraflagellar transport
LAP	Latency-associated peptide
MAPK	Mitogen-activated protein kinase
MEK	MAPK/ERK kinase
MKS	Meckel syndrome
mTOR	Mechanistic Target Of Rapamycin
MVID	Microvillus inclusion disease
NGS	Next generation sequencing
NO	Nitric oxide
OFD	Oral-Facial-Digital Syndrome

PAI1	Plasminogen activator inhibitor 1
PC	Polycystin
PCP	Planar cell polarity
PI3K	Phosphoinositide 3-kinase
PKD	Polycystic kidney disease
PKD1	Polycystic kidney disease 1 gene
PKD2	Polycystic kidney disease 2 gene
PKHD1	Polycystic kidney and hepatic disease 1 (fibrocystin / polyductin)
NPHP	Nephronophthisis
PTEC	Proximal tubular epithelial cell
PTGS2	Prostaglandin-endoperoxide synthase 2
qPCR	Quantitative polymerase chain reaction
RIPA	Radioimmunoprecipitation assay
sActRIIB-Fc	Soluble Activin receptor-IIB fusion protein
SDS-PAGE	Sodium dodecyl sulfate polyacrylamide gel electrophoresis
SERPINE1	Serpin Peptidase Inhibitor, Clade E, Member 1
SMAD	Mothers against decapentaplegic homolog
TBS	Tris-buffered saline
TGF	Tubuloglomerular feedback
TGFBRI	Transforming growth factor β receptor I (ALK5)
TGF- β	Transforming growth factor β
TGF- β Ab	TGF- β neutralizing antibody
VIM	Vimentin
YAP	Yes-associated protein