



Universiteit
Leiden
The Netherlands

Zebrafish as research model to study Gaucher disease: Insights into molecular mechanisms

Lelieveld, L.T.

Citation

Lelieveld, L. T. (2020, October 20). *Zebrafish as research model to study Gaucher disease: Insights into molecular mechanisms*. Retrieved from <https://hdl.handle.net/1887/137851>

Version: Publisher's Version

License: [Licence agreement concerning inclusion of doctoral thesis in the Institutional Repository of the University of Leiden](#)

Downloaded from: <https://hdl.handle.net/1887/137851>

Note: To cite this publication please use the final published version (if applicable).

Cover Page



Universiteit Leiden



The handle <http://hdl.handle.net/1887/137851> holds various files of this Leiden University dissertation.

Author: Lelieveld, L.T.

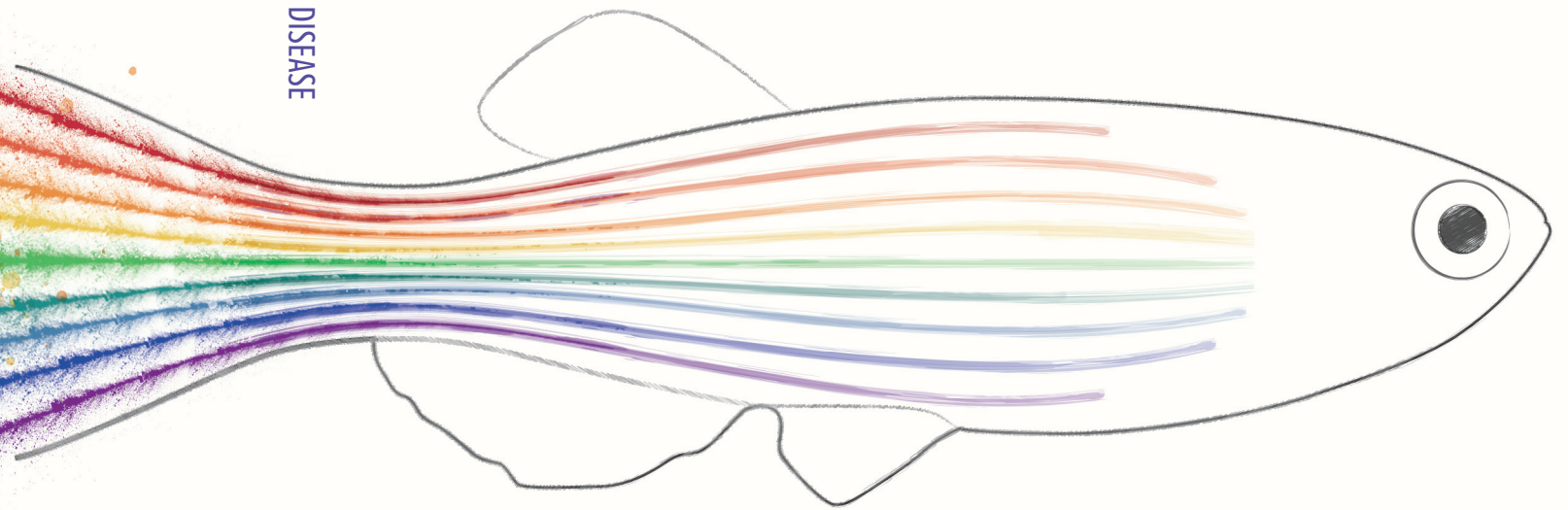
Title: Zebrafish as research model to study Gaucher disease: Insights into molecular mechanisms

Issue date: 2020-10-20

ZEBRAFISH AS RESEARCH MODEL TO STUDY GAUCHER DISEASE

INSIGHTS INTO MOLECULAR MECHANISMS

ZEBRAFISH AS RESEARCH MODEL TO STUDY GAUCHER DISEASE



LINDSEY T. LELIEVELD

LINDSEY T. LELIEVELD