



Universiteit
Leiden
The Netherlands

Genetic and environmental determinants of cardiometabolic health

Bos, M.M.

Citation

Bos, M. M. (2020, October 1). *Genetic and environmental determinants of cardiometabolic health*. Retrieved from <https://hdl.handle.net/1887/136917>

Version: Publisher's Version

License: [Licence agreement concerning inclusion of doctoral thesis in the Institutional Repository of the University of Leiden](#)

Downloaded from: <https://hdl.handle.net/1887/136917>

Note: To cite this publication please use the final published version (if applicable).

Cover Page



Universiteit Leiden

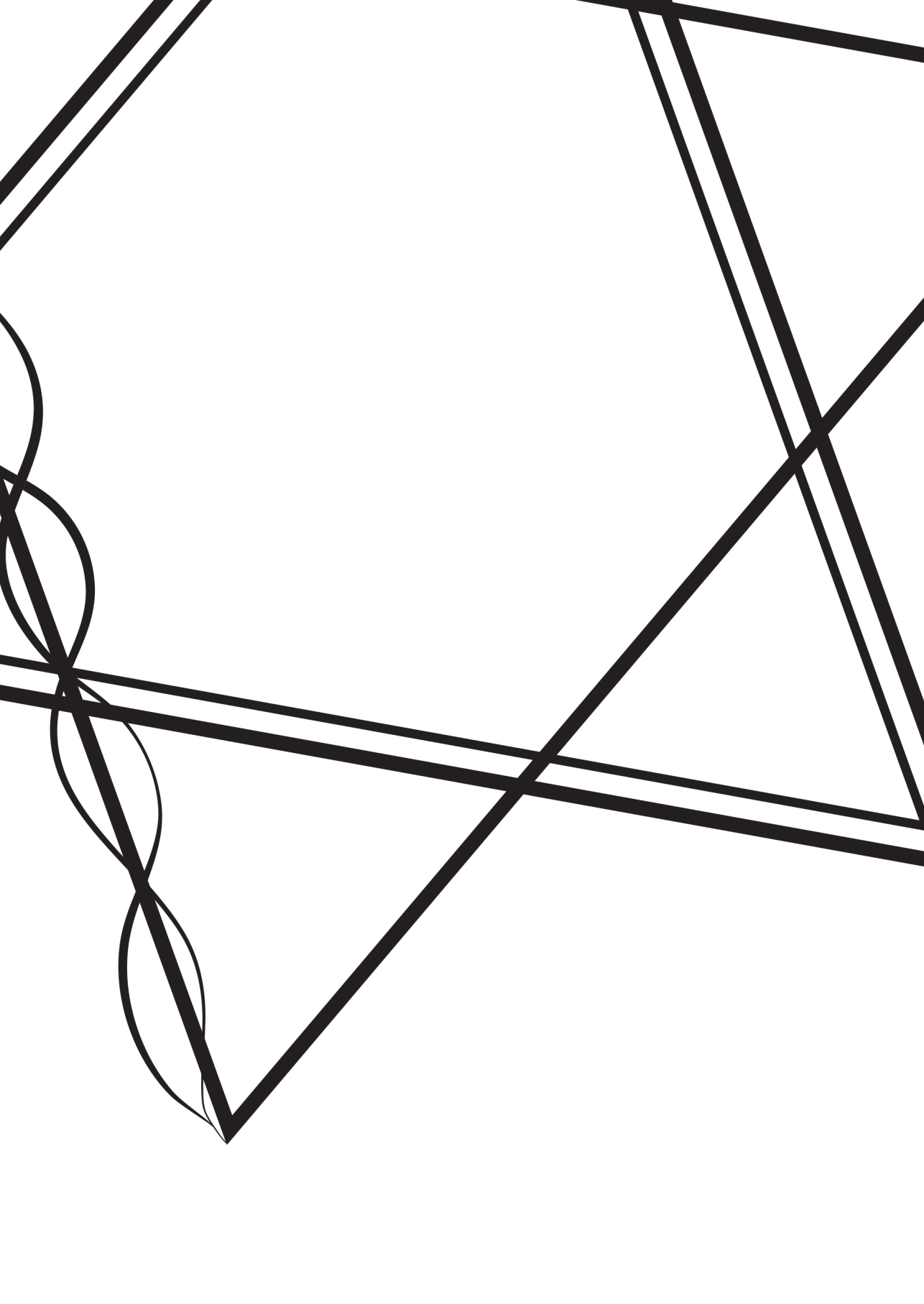


The handle <http://hdl.handle.net/1887/136917> holds various files of this Leiden University dissertation.

Author: Bos, M.M.

Title: Genetic and environmental determinants of cardiometabolic health

Issue date: 2020-10-01





CHAPTER 3.2

The association between habitual sleep duration and sleep quality with glycemic traits: assessment by cross-sectional and Mendelian Randomization analyses

Maxime M Bos, Diana van Heemst, Esther Donga, Renée de Mutsert, Frits R Rosendaal, Gerard Jan Blauw, Patrick C N Rensen, Nienke R Biermasz, Raymond Noordam

J Clin Med 2019;8(5):682

ABSTRACT

Evidence whether habitual sleep duration and sleep quality are associated with insulin resistance is inconsistent. Therefore, we aimed to investigate the associations between different measures of habitual sleep with glycemic traits by cross-sectional as well as Mendelian Randomization analyses. Using a cross-sectional study design in 4,672 middle-aged (45-65 years; 48% men) non-diabetic participants of the Netherlands Epidemiology of Obesity (NEO) study, we assessed the associations of sleep duration and sleep quality with glycemic traits using multivariable linear regression models adjusted for demographics, anthropometrics and lifestyle factors. Genetic variants for total, short and long sleep duration were used as instrumental variables in two-sample Mendelian Randomization analyses using summary-level data of genome wide association studies on glycemic traits in individuals without diabetes in a cohort of European ancestry (MAGIC; n=58,074). Compared with medium sleepers (median 7.0 hours of sleep per night), the shortest sleepers (median 5.0 hours of sleep per night) had 14.5% (95% confidence interval (CI): 2.0-28.6%) higher fasting insulin level and 16.3% (95% CI: 2.7-31.7%) higher HOMA- β . Bad sleep quality as compared with good sleep quality was associated with higher insulin resistance (e.g., 14.3% (95% CI: 4.7-24.9%) higher HOMA-IR). All these associations disappeared after adjustment for BMI and the risk of sleep apnea. Mendelian Randomization analyses did not indicate a causal association between total, short or long sleep duration and glycemic traits. Therefore, we conclude that measures of habitual sleep duration and sleep quality as applied in our study are unlikely to causally associate with insulin resistance.

INTRODUCTION

During the past decades obesity and conditions that reflect disturbances in metabolism have increased¹. Multiple studies assessed the association between measures of habitual sleep and metabolic diseases. In several studies, it has been observed that both short and long total sleep duration were associated with a higher risk of obesity, insulin resistance, diabetes mellitus and a higher body weight²⁻⁸. However, other studies reported only short sleep duration and not long sleep duration to be associated with a higher risk of obesity and metabolic syndrome⁹⁻¹¹. As total sleep duration has decreased over the past decades¹², studies in this area are of increasing importance.

3.2

Several factors could contribute to the discrepancy in the observed associations between sleep duration and insulin resistance. For example, most studies investigated only short sleep duration^{2, 11}, or short sleep duration under artificial circumstances^{2, 13}, which might not resemble habitual short sleep duration. Another explanation might be adjustments for confounding factors. Body mass index (BMI) is known on one hand to be one of the largest risk factors for insulin resistance and diabetes while on the other hand it is associated with shorter sleep duration¹⁴⁻¹⁶. In a study in adolescents, an association between shorter sleep duration and insulin resistance was observed, however, this association disappeared after adjustment for BMI¹⁷. Although related to BMI, another potential confounding factor is the presence of obstructive sleep apnea (OSA). The presence of OSA was demonstrated to be associated with a higher risk of insulin resistance and diabetes¹⁸. However, most of the previous performed studies did not adjust for OSA^{4, 9, 10, 19-21}.

The question remains to what extent the previously described associations between sleep duration with insulin resistance were confounded by BMI and OSA. Besides sleep duration, poor sleep quality is associated with higher presence of obesity, metabolic syndrome and diabetes^{22, 23}. However, studies examining poor sleep quality have mainly been performed in patients with diabetes^{5, 23, 24}. If assessed in non-diabetic individuals, artificially altered sleep quality was studied by e.g. suppressing slow-wave sleep²⁵, which does not resemble habitual poor sleep quality. Moreover, methods to assess sleep quality differed between studies. For example, some studies used only a single question about difficulty of initiating or maintaining sleep⁵, while others used the Pittsburgh Sleep Quality Index (PSQI) questionnaire²⁴ or other questionnaires^{26, 27}. These different methods to assess sleep quality complicate comparability among these studies.

Based on earlier studies we hypothesized that both short sleep duration and bad sleep quality are associated with higher insulin resistance, but this association is likely dependent on anthropometric traits like BMI and the risk of sleep apnea. We aimed to examine this hypothesis in a middle-aged non-diabetic population embedded in the Netherlands Epidemiology of Obesity (NEO) study²⁸. Furthermore, we extended this study with a two-sample Mendelian Randomization (MR) analysis to provide evidence whether the association between sleep duration and insulin resistance is causal using data of the Meta-Analyses of Glucose and Insulin-Related Traits Consortium (MAGIC).

METHODS

Study design and study population

The Netherlands Epidemiology of Obesity (NEO) study is a population-based cohort study. Participants were recruited from September 2008 until September 2012, resulting in a cohort of 6,671 individuals with an oversampling of individuals with overweight or obesity. Men and women aged between 45 and 65 years with a self-reported body mass index (BMI) of 27 kg/m² or higher living in the greater area of Leiden were eligible to participate in the NEO study. In addition, all inhabitants aged between 45 and 65 years from one municipality (Leiderdorp) were invited irrespective of their BMI, allowing for a reference distribution of BMI. Baseline data were collected at the NEO study center of the Leiden University Medical Center (LUMC). Prior to the NEO study visit, participants completed a questionnaire about demographic and clinical information and fasted for at least 10 hours. Participants came to the research site in the morning to undergo several baseline measurements including anthropometric measurements and blood sampling. The participants drank a liquid mixed meal where after postprandial blood sampling was performed. All medication used in the month preceding the visit to the study center was recorded by research nurses. More detailed information on the study design and data collection was described elsewhere ²⁸. The NEO study was approved by the medical ethics committee of the LUMC and all participants gave written informed consent.

In the present study, we excluded participants with missing data on the PSQI questionnaire (N=1,402), which was collected in participants enrolled in NEO after July 2009. Moreover, we excluded participants that used glucose lowering medication (N=263), had a medical history of diabetes mellitus (N=77), had missing baseline characteristics (N=132), had missing glucose or insulin concentrations (N=48), had missing data on the Berlin questionnaire (N=57) or were not fasted (N=20). In the analyses with the postprandial measures, we additionally excluded participants with incomplete or no liquid meal intake (N=8) and participants with either missing postprandial glucose (N=153) or postprandial insulin concentrations (N=78).

Sleep characteristics

To assess habitual sleep duration and sleep quality, we used data collected with the PSQI ²⁹, which is a self-rated questionnaire, to retrospectively measure sleep parameters over a one month time period. Total sleep duration was derived from the question "On an average night, how much sleep do you get?". To obtain a classification of short and long total sleep duration, we calculated the age- and sex- adjusted residuals with linear regression analysis for total sleep duration and determined subgroups on the basis of these residuals. We used the 5th lowest percentile to define shortest sleep, the 5th till

20th percentile to define short sleep, the 20th till 80th to define medium sleep, the 80th till 95th to define long sleep and the 95th till 100th percentile to define longest sleep of the adjusted residuals. Sleep quality was assessed using the total score of the PSQI questionnaire. The questionnaire consists of seven components based on which an overall score can be calculated ranging from 0 to 21, in which a higher score indicates a poorer sleep quality ²⁹. In the sleep quality analyses, the good sleep quality group (PSQI total score ≤ 5) was used as a reference group in linear regression analyses with two groups with either a PSQI total score of >5 or ≥ 10 , the latter in order to investigate a more extreme disturbed habitual sleep.

Glycemic traits

After an overnight fast of at least 10 hours, fasting blood samples were taken at the study center. Within 5 minutes after the first blood sample was taken, participants drank a liquid mixed meal. This meal (400 mL) contained 600 kcal, with 16% of energy derived (En%) from protein, 50% En% from carbohydrates and 34 En% from fat. Two postprandial blood samples were taken at 30 and 150 minutes after ingestion of the mixed meal. Serum and plasma was collected during each of the three blood draws and concentrations of glucose and insulin were determined. Fasting plasma glucose concentrations were determined by enzymatic and colorimetric methods (Roche Modular Analytics P800, Roche Diagnostics, Mannheim, Germany; CV $< 5\%$) and serum insulin concentrations were determined by an immunometric method (Siemens Immulite 2500, Siemens Healthcare Diagnostics, Breda, The Netherlands; CV $< 5\%$). All analyses were performed in the central clinical chemistry laboratory of the Leiden University Medical Center. Fasting glucose and insulin levels were used to calculate the Homeostatic Model Assessment of Insulin Resistance (HOMA-IR) index as a marker for hepatic insulin resistance. The HOMA-IR was calculated using $(\text{fasting insulin} \times \text{fasting glucose}) / 22.5$. HOMA of β -cell function (HOMA- β) was used as a marker that indicates basal insulin release, and calculated as $20 \times (\text{fasting insulin} / \text{fasting glucose}) - 3.5$ ^{30, 31}. The area under the curve (AUC) for postprandial overall glucose and insulin levels was calculated using the Trapezoid Rule as $(15 \times \text{fasting concentration} + 75 \times \text{concentration}_{30\text{min}} + 60 \times \text{concentration}_{150\text{min}}) / 150$ ³².

Covariates

Level of education was reported in 10 categories according to the Dutch education system and grouped into high versus low education ²⁸. A semi-quantitative food frequency questionnaire (FFQ) ³³ questionnaire was used to assess daily total energy intake. Energy intake was estimated from the FFQ with the 2011 version of the Dutch food composition table (NEVO-2011). Participants reported the frequency and duration of their physical activity in leisure time using the Short Questionnaire to Assess Health-enhancing

physical activity (SQUASH) ³⁴, which was expressed in hours per week of metabolic equivalents (MET-h/week). Body weight was measured without shoes and one kilogram (kg) was subtracted to correct for the weight of clothing. BMI was calculated by dividing the weight in kilograms by the height in meters squared. The Berlin questionnaire was used to assess the risk for the presence of obstructive sleep apnea syndrome ³⁵. This questionnaire consists of 10 questions that form three categories (snoring (category 1), daytime somnolence (category 2) and hypertension and BMI (category 3)) related to the likelihood of the presence of sleep apnea. Individuals can be classified as either having a high (2 or more categories with a positive score) or low likelihood of the presence of sleep apnea (only 1 or no categories with a positive score).

3.2

Statistical Analysis

Because individuals with a BMI of 27 kg/m² or higher were oversampled in the NEO study, adjustments were made to correctly represent associations in the general population ³⁶. This was done by weighting individuals towards the BMI distribution of participants from the Leiderdorp municipality ³⁷, whose BMI distribution was similar to the BMI distribution of the general Dutch population. All presented results are based on weighted analyses ³⁸. Consequently, the results apply to a population-based study without oversampling of participants with a BMI of 27 kg/m² or higher. We performed all statistical analyses of the NEO cohort using Stata version 12.1 (Stata, College Station, Texas, USA).

Baseline characteristics were expressed as means (with standard deviation, SD) for normally distributed measures, median with inter-quartile ranges for non-normally distributed measures, and proportions for categorical variables. Not normally distributed outcomes were log-transformed to approximate a normal distribution (notably fasting insulin, HOMA-IR, HOMA- β , AUC insulin). In order to present the results with a similar interpretation, normally distributed outcomes (notably fasting glucose and AUC glucose) were log-transformed as well. Linear regression analyses using the medium sleep category (characterized by 20th till 80th percentile of sleep duration residuals) as reference group were performed. The subsequent beta regression coefficients are expressed as percentages with accompanying 95% confidence interval (95% CI), which can be interpreted as the percentage change in outcome with respect to the reference group. The initial model in linear regression analyses was adjusted for age and sex (Model 1). In addition to age and sex, we adjusted in Model 2 for ethnicity (white/other), education level (high/other), smoking (never/former/current), alcohol consumption (g/day), energy intake (kJ/day), physical activity (MET/h/week) and sleep medication (yes/no). In Model 3 we additionally adjusted for sleep apnea (high risk/low risk) and BMI (kg/m²). In the analyses for sleep quality we did not adjust for sleep medication in Model 2 and Model 3, as this is a component of the PSQI total score.

Mendelian Randomization analysis

For the MR analysis, we selected 78 single nucleotide polymorphisms (SNPs) that have been shown to associate with self-reported total sleep duration (p -value $< 5e^{-8}$) as genetic instruments from the largest genome-wide association study (GWAS; source: UK Biobank, 446,118 unrelated European-ancestry individuals ³⁹). Moreover, we selected 27 SNPs associated with short sleep duration (< 7 hours; $n = 106,192$ cases) and 8 SNPs associated with long sleep duration (≥ 9 hours; $n = 34,184$ cases) relative to 7-8 hours of sleep duration ($n = 305,742$) ³⁹.

Summary statistics data of GWAS on glycaemic traits were used as outcomes in a two-sample MR approach. We used data from MAGIC, which comprised of a meta-analysis of European ancestry studies that investigated genetic variants associated with glycemic traits. For fasting glucose and fasting insulin, we used the GWAS of Manning *et al.* (2012)⁴⁰ which included a total of 58,074 and 51,570 individuals without diabetes mellitus, respectively. In addition, we used HOMA-IR and HOMA-B as measures of insulin resistance ($n = 46,186$) ⁴¹.

For the two-sample MR analyses, we used similar methodology as have been described previously ⁴². In short, we combined effects of the individual genetic instruments using the inverse variance weighted (IVW) approach as our main analysis method with MRCIEU/TwoSampleMR package in R ⁴³. The resulting estimate (presented with accompanying 95% CI) can be interpreted as a weighted mean effect of genetically determined increase in total sleep duration (per hour) and a higher risk for short or long sleep duration on our study outcomes. In order to formally test for potential pleiotropic effects of the genetic variants, in which the genetic variants have pleiotropic effects that influence glycemic traits via alternative pathways, we conducted MR-Egger regression as sensitivity analysis ⁴⁴. We furthermore conducted weighted median estimator (WME) analyses; similarity between the IVW and WME effect estimates are indicative of robustness of the results ⁴⁵.

RESULTS

Baseline characteristics

In the present study we included a total of 4,672 participants with a mean age of 56 (SD 6.0) years, of whom 48% was men. In **Table 1** the population characteristics are presented for the study population, stratified by the sleep duration groups. As compared with the medium sleep group (sleep duration = 7 h/day), participants in the shortest sleep group (sleep duration = 5 h/day) were more of non-white ancestry (96% vs. 90%), had a lower education (50% high vs. 39% high), higher BMI (26 vs. 27 kg/m²), smoked more (16% vs. 18%), were less physically active (31 vs. 25 MET/h/week), used more sleep medication (4% vs. 14%), had a higher PSQI total score (4 vs. 11) and had a higher risk of having sleep apnea (17% vs. 35%). In the shortest sleep group fasting insulin, HOMA- β and AUC of insulin were higher than in the medium sleep group. As compared with the medium group, the longest sleep duration group consisted of more men (42% vs. 53%), more current smokers (16% vs. 20%), less high-educated participants (50% vs. 36%), more frequent use of sleep medication (4% vs. 7%) and more participants with a higher risk of having sleep apnea (17% vs. 24%) as compared with the medium sleep group. All other characteristics were similar between the groups.

Sleep duration and glycemic traits

In the analyses adjusted for age and sex (Model 1), shortest sleep was associated with a 17.9% (95%CI: 4.8;32.5%) higher fasting insulin, a 18.4% (95%CI: 3.9;34.9%) higher HOMA-IR, a 18.8% (95%CI: 4.9;34.7%) higher HOMA- β and a 17.5% (95%CI: 7.9;28.0%) higher AUC for insulin as compared with the medium sleep group (**Figure 1** and **Online Supplementary Table 1**). When we adjusted for potential confounding factors (Model 2), shortest sleep duration was associated with a 14.5% (95%CI: 2.0;28.6%) higher fasting insulin, a 14.9% (95%CI: 1.0;30.7%) higher HOMA-IR, a 16.3% (95%CI: 2.7;31.7%) higher HOMA- β and a 14.5% (95%CI: 4.9;24.9%) higher AUC of insulin. However, the associations between shortest sleep duration and HOMA-IR attenuated when analyses were adjusted for considered potential confounding factors (Model 2). When we additionally adjusted for BMI and risk of sleep apnea (Model 3) the other associations observed for shortest sleep duration disappeared. However, in Model 3, longest sleep was associated with a -16.3% (95%CI: -29.6;-0.4%) lower HOMA-IR as compared with the medium sleep duration group. The same attenuation of associations was observed when we adjusted separately for either BMI or the risk of sleep apnea (**Online Supplementary Table 1**: Model 3 and 4).

Table 1. Characteristics of participants in the Netherlands Epidemiology of Obesity study, stratified by sleep duration (N=4,672).

Sleep duration	Shortest	Short	Medium	Long	Longest
	0-5%	5-20%	20-80%	80-95%	95-100%
Age (years)	57 [5]	58 [5]	55 [6]	54 [6]	58 [6]
Sex (% men)	45	49	42	43	53
BMI (kg/m ²)	27 [5]	26 [4]	26 [4]	26 [4]	26 [5]
Ethnicity (% white)	90	94	96	96	94
Education (% high)	39	41	50	48	36
Smoking (%current)	18	14	16	16	20
Sleep medication (%)	14	10	4	5	7
Alcohol consumption (g/day)	12 [3;22]	11 [3;22]	10 [3;21]	9 [2;21]	11 [1;23]
Physical activity (MET/h/week)	25 [12;44]	30 [16;50]	31 [17;51]	32 [15;52]	30 [16;49]
Sleep duration (h/day)	5 [4;5]	6 [6;6]	7 [7;8]	8 [8;8]	9 [9;9]
PSQI (total score)	11 [9;13]	7 [5;9]	4 [3;6]	3 [1;4]	3 [1;5]
Sleep apnea (%)	35	25	17	17	24
Fasting glucose (mmol/L)	6 [1]	6 [2]	6 [1]	6 [1]	6 [2]
Fasting insulin (mmol/L)	9 [6;14]	8 [6;12]	7 [5;11]	7 [5;11]	7 [4;12]
HOMA-IR	2 [1;4]	2 [1;3]	2 [1;3]	2 [1;3]	2 [1;3]
HOMA-β	28 [18;42]	26 [18;40]	24 [16;37]	25 [15;36]	25 [13;37]
AUC Glucose*	6 [1]	6 [1]	6 [1]	6 [1]	6 [1]
AUC Insulin#	47 [34;62]	41 [30;57]	38 [29;53]	38 [30;54]	41 [26;61]

Abbreviations: AUC, area under the curve; BMI, body mass index; HOMA-β, Homeostatic Model of Assessment β-cell function; HOMA-IR, Homeostatic Model of Assessment Insulin Resistance; kJ, kilojoule; MET, metabolic equivalents of task; NEO, Netherlands Epidemiology of Obesity; PSQI, Pittsburgh Sleep Questionnaire Index. Results were based on analyses weighted towards the BMI distribution of the general Dutch population. Data presented as mean ± standard deviation (SD); proportion (%); median (25th-75th percentile). *, N=4,511; # N=4,586.

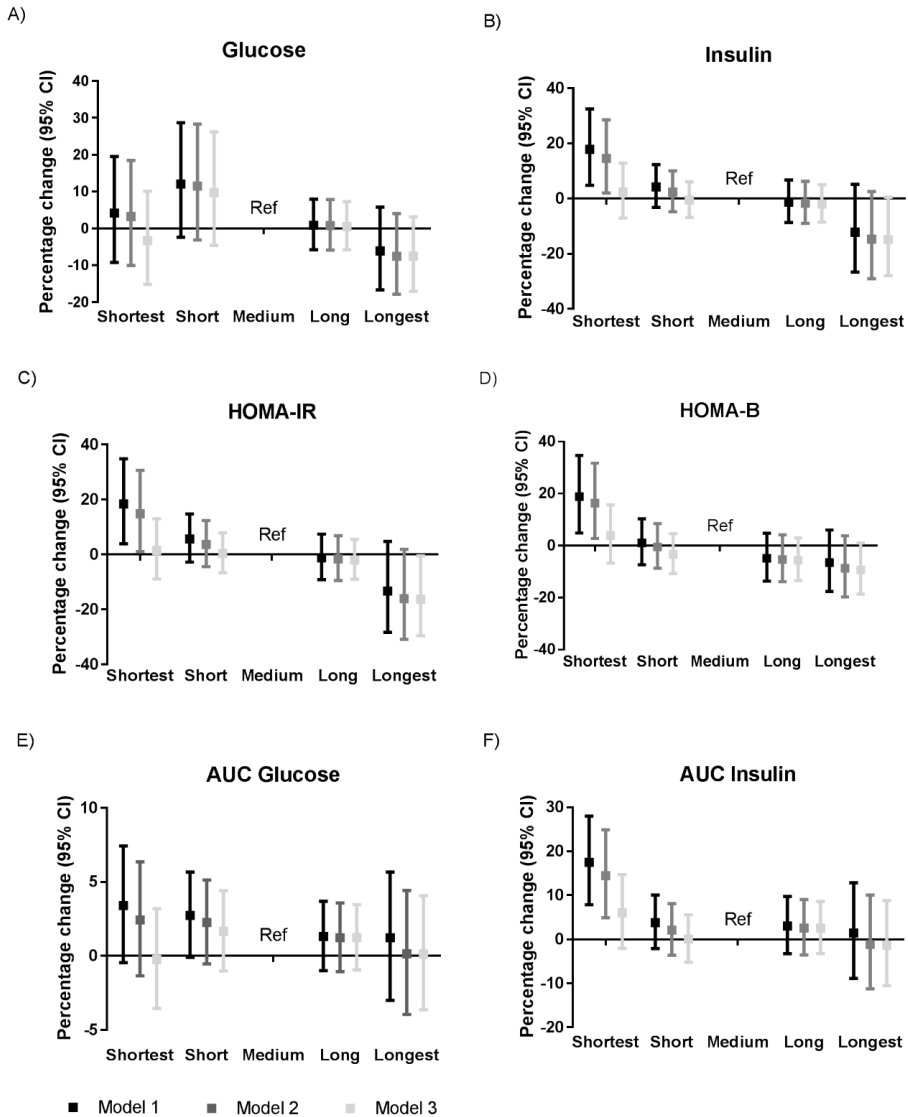


Figure 1. Associations between sleep duration and A) fasting glucose, B) fasting insulin, C) HOMA-IR, D) HOMA- β , E) AUC of glucose and F) AUC of insulin. Results were based on analyses weighted towards the BMI distribution of the general Dutch population (N=4,672), and were derived from regression coefficients with 95% confidence intervals from linear regression analyses and expressed as percentage change in outcome measure, as compared with the medium sleep duration group as reference category. Model 1: adjusted for age and sex; Model 2: adjusted for age, sex, ethnicity, education level, smoking, alcohol intake, caloric intake and physical activity; Model 3: adjusted for Model 2 + risk of sleep apnea and BMI. Abbreviations: AUC, area under the curve; CI, confidence interval; HOMA-IR, Homeostatic Model of Insulin Resistance; HOMA- β , Homeostatic Model of β cell function; Ref, reference category. N=4,511 for the analyses with AUC Glucose and N=4,586 for the analyses with AUC Insulin.

Sleep quality and glycemic traits

The associations between sleep quality and glycemic traits are visualized in **Figure 2** and **Online Supplementary Table 2**. We did find evidence for an association between poor sleep quality, as defined by a PSQI score of >5 and a 6.5% (95%CI: 0.0;13.5%) higher HOMA- β in Model 1 as compared with the good sleep quality group (PSQI score ≤ 5). However, when we adjusted for potential confounding factors in Model 2, this association disappeared (percentage change 5.1% (95%CI: -1.1-11.8%). In the age and sex adjusted analyses (Model 1), a PSQI score ≥ 10 was associated with a 16.9% (95%CI: 7.6;27.1%) higher fasting insulin, a 17.3% (95%CI: 7.0;28.5%) higher HOMA-IR, a 18.6% (95%CI: 8.4;29.7%) higher HOMA- β and a 7.7% (95%CI: 0.7;15.2%) higher AUC of insulin as compared with the good sleep quality group. When we additionally adjusted for potential confounding factors in Model 2, we observed a 14.1% (95%CI: 5.3;23.7%) higher fasting insulin, a 14.3% (95%CI: 4.7;24.9%) higher HOMA-IR, and a 15.7% (95%CI: 6.0;26.4%) higher HOMA- β in the group with a PSQI total score of ≥ 10 as compared with the good sleep quality group. However, all associations attenuated when we additionally adjusted for BMI and the risk of sleep apnea. These associations attenuated in a similar manner when we adjusted the model for only BMI or the risk of sleep apnea (**Online Supplementary Table 2**: Model 3 and 4).

Genetically-determined habitual sleep duration and glycemic traits

In order to assess whether the association observed between sleep duration and glycemic traits (Model 1 and 2) is causal, we performed an MR study. We found no evidence for an association between genetically determined total sleep duration, short sleep duration and long sleep duration with glycemic traits using IVW-analyses (**Table 2** and **Online Supplementary Table 3**). The WME analyses were consistent with these results (**Online Supplementary Table 3**). However, we did find evidence for an association between total sleep duration and a higher HOMA- β (IVW-estimate: 0.08 [95%CI: 0.01;0.014]). The estimate from WME analysis was consistent and MR-Egger did not indicate the presence of directional pleiotropy in this analysis (**Online Supplementary Table 3**).

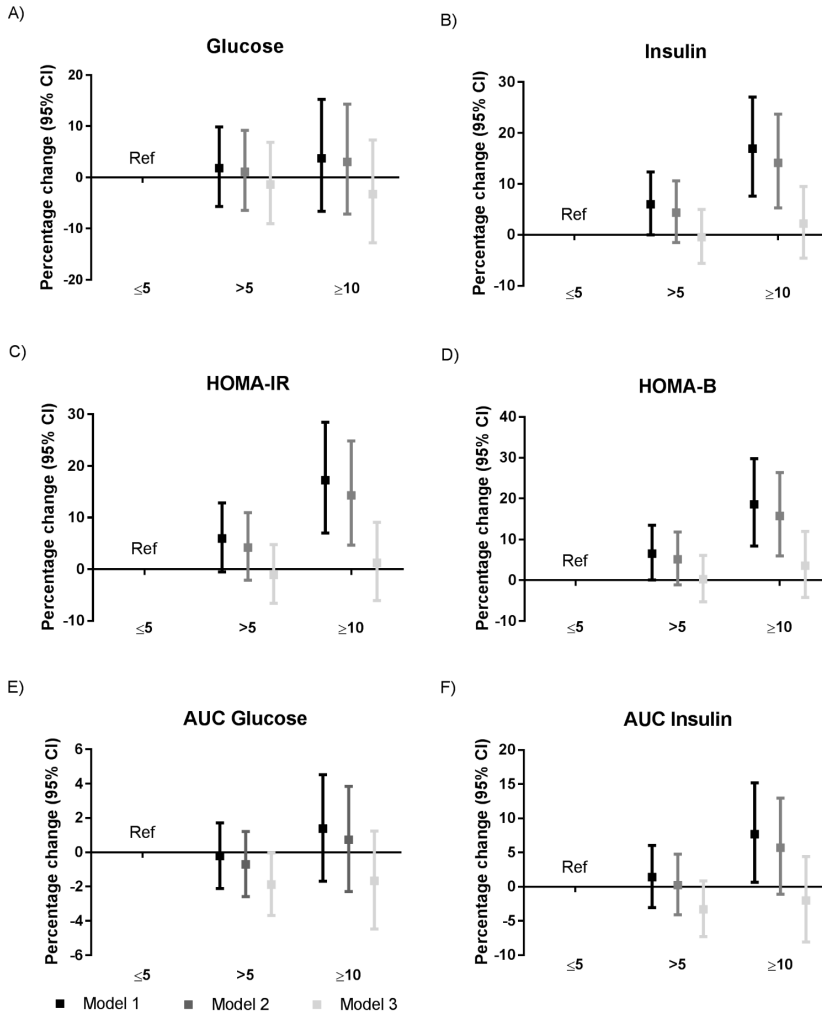


Figure 2. Associations between sleep quality and A) fasting glucose, B) fasting insulin, C) HOMA-IR, D) HOMA- β , E) AUC of glucose and F) AUC of insulin. Results were based on analyses weighted towards the BMI distribution of the general Dutch population (N=4,672), and were derived from regression coefficients with 95% confidence intervals from linear regression analyses, using either a group with a PSQI total score of >5 or ≥ 10 , and expressed as percentage change in outcome measure, as compared with the good sleep group as reference category. Model 1: adjusted for age and sex; Model 2: adjusted for age, sex, ethnicity, education level, smoking, alcohol intake, caloric intake and physical activity; Model 3: adjusted for Model 2 + risk of sleep apnea and BMI. Abbreviations: AUC, area under the curve; CI, confidence interval; HOMA-IR, Homeostatic Model of Insulin Resistance; HOMA- β , Homeostatic Model of β cell function; Ref, reference category. N=4,511 for the analyses with AUC Glucose and N=4,586 for the analyses with AUC Insulin.

Table 2. *Inverse-variance weighted estimates for sleep duration on glycemic traits.*

	Total sleep duration		Short sleep duration		Long sleep duration	
	SNPs	Estimate [95%CI]	SNPs	Estimate [95%CI]	SNPs	Estimate [95%CI]
Fasting glucose	45	-0.03 [-0.11;0.06]	20	-0.09 [-0.19;0.01]	5	-0.05 [-0.24;0.13]
Fasting Insulin	45	0.01 [-0.04;0.07]	20	-0.01 [-0.11;0.08]	5	-0.06 [-0.36;0.23]
HOMA-IR	53	0.07 [-0.01;0.15]	20	0.04 [-0.08;0.15]	5	-0.01 [-0.47;0.45]
HOMA- β	53	0.08 [0.01;0.14]	20	0.09 [-0.01;0.19]	5	0.09 [-0.26;0.45]

Data presented as odd ratios (type 2 diabetes) or beta coefficients with 95% confidence interval per standard deviation increase in exposure.

DISCUSSION

In the present study, we performed a cross-sectional analysis in a middle-aged population of 4,519 non-diabetic participants to determine the associations between habitual sleep duration and sleep quality with glycemic traits. When analyses were adjusted for age and sex, shortest sleep duration was associated with higher fasting insulin, higher HOMA-IR, higher HOMA- β and higher AUC of insulin. Poorer sleep quality was associated with higher fasting insulin, higher HOMA-IR, higher HOMA- β and higher AUC of insulin. However, all these associations disappeared after additional adjustment for BMI and the risk of sleep apnea. Furthermore, in the MR analyses, we, overall, did not observe associations between genetically-determined total, short and long sleep duration and glycemic traits. Of interest, we found some evidence that longer genetically-determined sleep duration was associated with a higher HOMA- β .

Previous studies showed that both short and long sleep duration, or only short sleep duration were associated with a higher risk of obesity, body weight, insulin resistance, and diabetes mellitus ^{2-5, 9, 10}. We hypothesized that these differences in findings may be explained by confounding factors such as BMI and sleep apnea. In agreement, in the age- and sex-adjusted analyses we observed associations between shorter sleep duration and higher insulin resistance which disappeared when we additionally adjusted for BMI and the presence of sleep apnea. Our findings are in agreement with a study of Javaheri *et al.* who also observed an association between short sleep duration and insulin resistance, which disappeared after adjustment for obesity ¹⁷. In line, our MR study, genetically-determined sleep duration was, in general, not associated with glycemic traits, indicating that there is no direct effect of sleep on glycemic traits. However, it has been observed that there is a shared genetic component between sleep and anthropometrics ⁴⁶. Moreover, adiposity has been shown to be causally associated with an increased risk of diabetes and altered glycemic traits ⁴⁵. Therefore, we hypothesize that excess adiposity is a common cause for alterations in habitual sleep and insulin resistance, instead of being in the causal path of this association.

An alternative explanation for these observations is that BMI/risk of sleep apnea is in the causal pathway between shorter sleep duration and increased insulin resistance. It was shown that sleep restriction reduces leptin levels and enhances ghrelin levels and thereby increases cravings for carbohydrate-rich foods which may result in weight gain ⁴⁷. Another mechanism that links short sleep duration with insulin resistance might be via obstructive sleep apnea (OSA). It was demonstrated that patients with OSA showed increased insulin resistance compared with controls without OSA, independent of obesity ⁴⁸. These might indicate that, although obesity is known to effect insulin resistance

¹⁵, OSA may have an independent additional effect on insulin resistance possibly via nocturnal hypoxemia ⁴⁹. A GWAS of Lane *et al.* on total sleep duration suggested that there is a shared genetic component between sleep duration and energy metabolism ⁴⁶, which demonstrates that the genetic background of an individual may also interfere with altered sleep duration and energy metabolism.

One of the strengths of this study is the use of residuals to determine the sleep duration. As no clear cut-off for short and long sleep exists in literature, using residuals is a good way to harmonize grouping of sleep duration among studies. Moreover, heterogeneity of future meta-analyses and systematic reviews might benefit from using this methodology. Another strength of this study is the extensive phenotyping of the NEO study. This enables us to correct for a broad range of possible confounding factors, such as ethnicity, physical activity, BMI, and risk of sleep apnea. In addition, we have used the PSQI questionnaire, which is a widely used validated tool to assess sleep disturbances. A limitation of the present study is the cross-sectional design, therefore, we are not able to exclude reverse causation or residual confounding in this study. Another limitation of this study is the use of subjective sleep questionnaires to assess sleep duration, sleep quality and the risk of sleep apnea. One of the drawbacks of self-reported data is the fact that this data is subject to recall bias. Moreover, there may be a measurement error resulting in non-differential misclassification for the exposure. Therefore, the use of a sleep diary may improve reliability of the measures of habitual sleep. However, the PSQI questionnaire has been shown to be a reliable and validated tool to assess sleep dysfunction and the Berlin questionnaire, used to assess the risk of sleep apnea, has been shown to be validated to detect mild and severe OSA in several populations ^{50, 51}. The MR study has the advantage of being a highly efficient method that allows for usage of large sample sizes, however, although we used the largest GWAS to date, we cannot rule out the use of weak instruments. The 78 loci used in the current study explained 0.69% of the variance in sleep duration. Moreover, the amount of genetic instruments that were present in this current study, especially for long sleep duration, was minimal. Finally, the identification of the genetic variants as well as the MR study were both performed in cohorts of European ancestry, which hampers the generalizability to non-European populations.

In summary, shorter sleep duration and poorer sleep quality were associated with higher insulin resistance, but these associations were dependent on BMI and the risk of sleep apnea. Both BMI and the risk of sleep apnea thereby likely explain previous observed associations between adverse habitual sleep and an increased risk of insulin resistance, suggesting that these factors should therefore be considered in future studies.

Acknowledgements and funding

We express our gratitude to all individuals who participate in the Netherlands Epidemiology of Obesity study. We are grateful to all participating general practitioners for inviting eligible participants. We furthermore thank P.R. van Beelen and all research nurses for collecting the data, P.J. Noordijk and her team for sample handling and storage, and I. de Jonge for all data management of the NEO study. The NEO study is supported by the participating Departments, the Division and the Board of Directors of the Leiden University Medical Centre, and by the Leiden University, Research Profile Area 'Vascular and Regenerative Medicine'. Nutricia Research, Utrecht, The Netherlands, provided the mixed meal. We acknowledge the support from the Netherlands Cardiovascular Research Initiative: an initiative with support of the Dutch Heart Foundation (CVON2014-02 ENERGISE). DvH was supported by the European Commission funded project HUMAN (Health-2013-INNOVATION-1-602757). NRB was supported by the Netherlands Organization for Scientific Research (NWO-VENI 016.136.125).

REFERENCES

1. Gregg EW, Shaw JE. Global Health Effects of Overweight and Obesity. *N Engl J Med*. 2017;377(1):80-1.
2. Wong PM, Manuck SB, DiNardo MM, Korytkowski M, Muldoon MF. Shorter sleep duration is associated with decreased insulin sensitivity in healthy white men. *Sleep*. 2015;38(2):223-31.
3. Reutrakul S, Van Cauter E. Interactions between sleep, circadian function, and glucose metabolism: implications for risk and severity of diabetes. *Annals of the New York Academy of Sciences*. 2014;1311:151-73.
4. Cappuccio FP, Taggart FM, Kandala NB, Currie A, Peile E, Stranges S, et al. Meta-analysis of short sleep duration and obesity in children and adults. *Sleep*. 2008;31(5):619-26.
5. Cappuccio FP, D'Elia L, Strazzullo P, Miller MA. Quantity and quality of sleep and incidence of type 2 diabetes: a systematic review and meta-analysis. *Diabetes Care*. 2010;33(2):414-20.
6. Brady EM, Bodicoat DH, Hall AP, Khunti K, Yates T, Edwardson C, et al. Sleep duration, obesity and insulin resistance in a multi-ethnic UK population at high risk of diabetes. *Diabetes Res Clin Pract*. 2018;139:195-202.
7. Rutters F, Besson H, Walker M, Mari A, Konrad T, Nilsson PM, et al. The Association Between Sleep Duration, Insulin Sensitivity, and beta-Cell Function: The EGIR-RISC Study. *J Clin Endocrinol Metab*. 2016;101(9):3272-80.
8. van Dijk D, Balkau B, Segrestin B, Gottsater M, Gabriel R, Hatunic M, et al. Associations between sleep duration and sleep debt with insulin sensitivity and insulin secretion in the EGIR-RISC Study. *Diabetes Metab*. 2018.
9. Wu Y, Zhai L, Zhang D. Sleep duration and obesity among adults: a meta-analysis of prospective studies. *Sleep Med*. 2014;15(12):1456-62.
10. Xi B, He D, Zhang M, Xue J, Zhou D. Short sleep duration predicts risk of metabolic syndrome: a systematic review and meta-analysis. *Sleep Med Rev*. 2014;18(4):293-7.
11. Liu A, Kushida CA, Reaven GM. Habitual shortened sleep and insulin resistance: an independent relationship in obese individuals. *Metabolism*. 2013;62(11):1553-6.
12. Schoenborn CA, Adams PF, Peregoy JA. Health behaviors of adults: United States, 2008-2010. *Vital Health Stat 10*. 2013(257):1-184.
13. Donga E, van Dijk M, van Dijk JG, Biermasz NR, Lammers GJ, van Kralingen KW, et al. A single night of partial sleep deprivation induces insulin resistance in multiple metabolic pathways in healthy subjects. *J Clin Endocrinol Metab*. 2010;95(6):2963-8.
14. Kahn SE, Hull RL, Utzschneider KM. Mechanisms linking obesity to insulin resistance and type 2 diabetes. *Nature*. 2006;444(7121):840-6.
15. Dale CE, Fatemifar G, Palmer TM, White J, Prieto-Merino D, Zabaneh D, et al. Causal Associations of Adiposity and Body Fat Distribution With Coronary Heart Disease, Stroke Subtypes, and Type 2 Diabetes Mellitus: A Mendelian Randomization Analysis. *Circulation*. 2017;135(24):2373-88.
16. Dekker SA, Noordam R, Biermasz NR, de Roos A, Lamb HJ, Rosendaal FR, et al. Habitual Sleep Measures are Associated with Overall Body Fat, and not Specifically with Visceral Fat, in Men and Women. *Obesity (Silver Spring)*. 2018;26(10):1651-8.
17. Javaheri S, Storfer-Isser A, Rosen CL, Redline S. Association of short and long sleep durations with insulin sensitivity in adolescents. *J Pediatr*. 2011;158(4):617-23.

18. Morgenstern M, Wang J, Beatty N, Batemarco T, Sica AL, Greenberg H. Obstructive sleep apnea: an unexpected cause of insulin resistance and diabetes. *Endocrinol Metab Clin North Am.* 2014;43(1):187-204.
19. Cappuccio FP, Cooper D, D'Elia L, Strazzullo P, Miller MA. Sleep duration predicts cardiovascular outcomes: a systematic review and meta-analysis of prospective studies. *Eur Heart J.* 2011;32(12):1484-92.
20. van den Berg JF, Miedema HM, Tulen JH, Neven AK, Hofman A, Witteman JC, et al. Long sleep duration is associated with serum cholesterol in the elderly: the Rotterdam Study. *Psychosom Med.* 2008;70(9):1005-11.
21. Shin HY, Kang G, Kim SW, Kim JM, Yoon JS, Shin IS. Associations between sleep duration and abnormal serum lipid levels: data from the Korean National Health and Nutrition Examination Survey (KNHANES). *Sleep Med.* 2016;24:119-23.
22. Jennings JR, Muldoon MF, Hall M, Buysse DJ, Manuck SB. Self-reported sleep quality is associated with the metabolic syndrome. *Sleep.* 2007;30(2):219-23.
23. Koren D, Dumin M, Gozal D. Role of sleep quality in the metabolic syndrome. *Diabetes Metab Syndr Obes.* 2016;9:281-310.
24. Tang Y, Meng L, Li D, Yang M, Zhu Y, Li C, et al. Interaction of sleep quality and sleep duration on glycemic control in patients with type 2 diabetes mellitus. *Chin Med J (Engl).* 2014;127(20):3543-7.
25. Tasali E, Leproult R, Ehrmann DA, Van Cauter E. Slow-wave sleep and the risk of type 2 diabetes in humans. *Proc Natl Acad Sci U S A.* 2008;105(3):1044-9.
26. Byberg S, Hansen AL, Christensen DL, Vistisen D, Aadahl M, Linneberg A, et al. Sleep duration and sleep quality are associated differently with alterations of glucose homeostasis. *Diabet Med.* 2012;29(9):e354-60.
27. Engeda J, Mezuk B, Ratliff S, Ning Y. Association between duration and quality of sleep and the risk of pre-diabetes: evidence from NHANES. *Diabet Med.* 2013;30(6):676-80.
28. de Mutsert R, den Heijer M, Rabelink TJ, Smit JW, Romijn JA, Jukema JW, et al. The Netherlands Epidemiology of Obesity (NEO) study: study design and data collection. *Eur J Epidemiol.* 2013;28(6):513-23.
29. Buysse DJ, Reynolds CF, 3rd, Monk TH, Berman SR, Kupfer DJ. The Pittsburgh Sleep Quality Index: a new instrument for psychiatric practice and research. *Psychiatry Res.* 1989;28(2):193-213.
30. Matthews DR, Hosker JP, Rudenski AS, Naylor BA, Treacher DF, Turner RC. Homeostasis model assessment: insulin resistance and beta-cell function from fasting plasma glucose and insulin concentrations in man. *Diabetologia.* 1985;28(7):412-9.
31. Wallace TM, Levy JC, Matthews DR. Use and abuse of HOMA modeling. *Diabetes Care.* 2004;27(6):1487-95.
32. Retnakaran R, Shen S, Hanley AJ, Vuksan V, Hamilton JK, Zinman B. Hyperbolic relationship between insulin secretion and sensitivity on oral glucose tolerance test. *Obesity (Silver Spring).* 2008;16(8):1901-7.
33. Feunekes GI, Van Staveren WA, De Vries JH, Burema J, Hautvast JG. Relative and biomarker-based validity of a food-frequency questionnaire estimating intake of fats and cholesterol. *The American journal of clinical nutrition.* 1993;58(4):489-96.
34. Wendel-Vos GC, Schuit AJ, Saris WH, Kromhout D. Reproducibility and relative validity of the short questionnaire to assess health-enhancing physical activity. *Journal of clinical epidemiology.* 2003;56(12):1163-9.

35. Netzer NC, Stoohs RA, Netzer CM, Clark K, Strohl KP. Using the Berlin Questionnaire to identify patients at risk for the sleep apnea syndrome. *Annals of internal medicine*. 1999;131(7):485-91.
36. Korn EL, Graubard BI. Epidemiologic studies utilizing surveys: accounting for the sampling design. *Am J Public Health*. 1991;81(9):1166-73.
37. Lumley T. Analysis of complex survey samples [Available from: <http://www.jstatsoft.org/v09/i08/paper>.
38. VWS Mv. Hoveel mensen hebben overgewicht? [Available from: http://www.rivm.nl/Onderwerpen/N/Nederland_de_Maat_Genomen.
39. Dashti H, Jones SE, Wood AR, Lane J, van Hees VT, Wang H, et al. GWAS in 446,118 European adults identifies 78 genetic loci for self-reported habitual sleep duration supported by accelerometer-derived estimates. *bioRxiv*. 2018:274977.
40. Manning AK, Hivert MF, Scott RA, Grimsby JL, Bouatia-Naji N, Chen H, et al. A genome-wide approach accounting for body mass index identifies genetic variants influencing fasting glycemic traits and insulin resistance. *Nat Genet*. 2012;44(6):659-69.
41. Dupuis J, Langenberg C, Prokopenko I, Saxena R, Soranzo N, Jackson AU, et al. New genetic loci implicated in fasting glucose homeostasis and their impact on type 2 diabetes risk. *Nat Genet*. 2010;42(2):105-16.
42. Bos MM, Smit RAJ, Trompet S, van Heemst D, Noordam R. Thyroid Signaling, Insulin Resistance, and 2 Diabetes Mellitus: A Mendelian Randomization Study. *J Clin Endocrinol Metab*. 2017;102(6):1960-70.
43. Hemani G, Zheng J, Elsworth B, Wade KH, Haberland V, Baird D, et al. The MR-Base platform supports systematic causal inference across the human phenotype. *Elife*. 2018;7.
44. Bowden J, Davey Smith G, Burgess S. Mendelian randomization with invalid instruments: effect estimation and bias detection through Egger regression. *Int J Epidemiol*. 2015;44(2):512-25.
45. Bowden J, Davey Smith G, Haycock PC, Burgess S. Consistent Estimation in Mendelian Randomization with Some Invalid Instruments Using a Weighted Median Estimator. *Genet Epidemiol*. 2016;40(4):304-14.
46. Lane JM, Liang J, Vlasac I, Anderson SG, Bechtold DA, Bowden J, et al. Genome-wide association analyses of sleep disturbance traits identify new loci and highlight shared genetics with neuropsychiatric and metabolic traits. *Nature genetics*. 2017;49(2):274-81.
47. Spiegel K, Tasali E, Penev P, Van Cauter E. Brief communication: Sleep curtailment in healthy young men is associated with decreased leptin levels, elevated ghrelin levels, and increased hunger and appetite. *Annals of internal medicine*. 2004;141(11):846-50.
48. Tassone F, Lanfranco F, Gianotti L, Pivetti S, Navone F, Rossetto R, et al. Obstructive sleep apnoea syndrome impairs insulin sensitivity independently of anthropometric variables. *Clin Endocrinol (Oxf)*. 2003;59(3):374-9.
49. Dewan NA, Nieto FJ, Somers VK. Intermittent hypoxemia and OSA: implications for comorbidities. *Chest*. 2015;147(1):266-74.
50. Mollayeva T, Thurairajah P, Burton K, Mollayeva S, Shapiro CM, Colantonio A. The Pittsburgh sleep quality index as a screening tool for sleep dysfunction in clinical and non-clinical samples: A systematic review and meta-analysis. *Sleep Med Rev*. 2016;25:52-73.
51. Amra B, Rahmati B, Soltaninejad F, Feizi A. Screening Questionnaires for Obstructive Sleep Apnea: An Updated Systematic Review. *Oman Med J*. 2018;33(3):184-92.

