



Universiteit
Leiden
The Netherlands

Multimodality imaging in the characterization and risk-stratification of cardiac disease and CRT recipients

Bijl, P. van der

Citation

Bijl, P. van der. (2020, September 3). *Multimodality imaging in the characterization and risk-stratification of cardiac disease and CRT recipients*. Retrieved from <https://hdl.handle.net/1887/136092>

Version: Publisher's Version

License: [Licence agreement concerning inclusion of doctoral thesis in the Institutional Repository of the University of Leiden](#)

Downloaded from: <https://hdl.handle.net/1887/136092>

Note: To cite this publication please use the final published version (if applicable).

Cover Page



Universiteit Leiden



The handle <http://hdl.handle.net/1887/136092> holds various files of this Leiden University dissertation.

Author: Bijl, P. van der

Title: Multimodality imaging in the characterization and risk-stratification of cardiac disease and CRT recipients

Issue date: 2020-09-03

7

Impact of atrial fibrillation on improvement of functional mitral regurgitation in cardiac resynchronization therapy

Van der Bijl P
Vo NM
Leung M
Ajmone Marsan N
Delgado V
Stone GW
Bax JJ

Heart Rhythm 2018;15:1816-1822.

ABSTRACT

Background: Functional mitral regurgitation (FMR) and atrial fibrillation (AF) are frequent heart failure (HF) complications. Cardiac resynchronization therapy (CRT) can improve FMR; however, little is known about the influence of AF on FMR improvement. The purpose of the current study was to investigate the mechanisms and impact of baseline AF on FMR improvement after CRT.

Methods: CRT recipients with HF, AF or sinus rhythm (SR) at baseline with moderate to severe FMR, were included from an ongoing registry. Left atrial (LA), mitral annular (MA) and left ventricular (LV) dimensions were evaluated echocardiographically. FMR improvement was defined as ≥ 1 grade decrease from baseline to 6 months' follow-up. Clinical and echocardiographic measurements were performed at baseline and 6 months' follow-up.

Results: 419 patients (mean age 66 ± 8 years, 73% male) were analyzed. At 6 months' follow-up, FMR improved in 145 (45.6%) patients with SR vs. 31 (30.7%) in patients with AF ($P=0.011$). Despite similar LV reverse remodeling at 6 months after CRT (LV end-systolic volume decreased by 32.1 ± 43.2 ml in the SR group, and by 27.7 ± 6.3 ml in those with AF; $P=0.353$), patients with SR exhibited smaller LA volumes (63.0 ± 26.5 ml vs. 103.1 ± 41.0 ml; $P<0.001$) and MA diameters (42.3 ± 5.6 mm vs. 46.1 ± 5.8 mm; $P<0.001$), compared to AF patients.

Conclusions: FMR improvement is more common in CRT recipients in SR vs. AF, despite a similar degree of LV remodeling. LA volume and MA diameter are greater in the AF group, causing the negative impact of AF on FMR improvement in CRT, as well as indicating a potential therapeutic target, i.e. AF rhythm control.

INTRODUCTION

Functional mitral regurgitation (FMR) is a frequent complication of heart failure, with a prevalence of 50-65%.^{1,2} Global or regional left ventricular (LV) dysfunction or remodeling can cause FMR by tethering of the mitral valve leaflets and impaired closing forces.³ Atrial fibrillation (AF) is another common manifestation of heart failure (increasing in prevalence from 5% in New York Heart Association (NYHA) class I to 50% in class IV), and it may contribute to the severity of FMR through left atrial (LA) and mitral annular dilatation.⁴⁻⁶ Both AF and FMR worsen the prognosis of patients with heart failure, although the impact of AF is more controversial.^{2,7,8}

Heart failure patients with AF who remain symptomatic despite optimal medical therapy (NYHA class III and ambulatory IV), with wide QRS complex (≥ 130 ms) and reduced LV ejection fraction (LVEF $\leq 35\%$), are candidates for cardiac resynchronization therapy (CRT).^{4,9} CRT not only improves LV systolic function, but can also decrease FMR by a variety of mechanisms.^{3,9} In addition, CRT has been associated with a reduction of LA dimensions and a decrease in the burden of AF.¹⁰ Since AF may influence the severity of FMR in heart failure patients through LA enlargement and mitral annular dilatation, the purpose of the present study was to investigate if the presence of baseline AF has an impact on the extent of FMR improvement which occurs after CRT.

METHODS

Study population and design

Heart failure patients with moderate to severe FMR at baseline who subsequently received CRT, were selected from an ongoing clinical registry.¹¹ Patients with heart failure, who remain symptomatic despite receiving maximum tolerated doses of optimal medical therapy, are included in the registry on implantation of a CRT device. The institutional review board approved the study and waived the need for written informed consent for retrospective analysis of clinically acquired data anonymously handled. All data used for the present study were acquired for clinical purposes and handled anonymously. Demographic, clinical, electrocardiographic and echocardiographic data were collected. Patients were divided according to the baseline rhythm: AF vs. sinus rhythm (SR). AF at baseline was classified according to current guidelines: i) paroxysmal ii) persistent iii) long-standing persistent and iv) permanent.¹² Clinical, electrocardiographic and echocardiographic assessment was performed at baseline (before CRT implantation), and repeated at 6 months' follow-up. Ischemic heart failure was defined by the presence of coronary artery disease. The following functional parameters were evaluated: NYHA functional class, quality of life (Minnesota Living with Heart Failure Questionnaire) and (when patients' functional status permits) 6-minute walk test. Patients were excluded if they

underwent mitral valve repair, replacement or percutaneous mitral valve repair at any time, or if the cause of mitral regurgitation was organic.

CRT implantation technique

The right atrial and ventricular leads were placed via a standard subclavian or cephalic vein approach. Coronary sinus venography was used to guide the LV lead implantation. All leads were subsequently connected to a dual-chamber, biventricular CRT device. CRT devices with defibrillator function were implanted in the majority of patients (96%), while 4% received a CRT device without a defibrillator function. Patients were followed up at regular intervals in the heart failure clinic, with concurrent interrogation of device function. Atrioventricular delays were empirically set at 120-140 ms, while interventricular delays were similarly set at 0 ms. CRT device optimization was performed at the discretion of the treating physician during follow-up visits.

Echocardiographic acquisition and data analysis

Transthoracic echocardiograms were performed in the left lateral decubitus position with a commercially available echocardiographic system (E9 or VIVID 7, General Electric Vingmed Ultrasound, Milwaukee, USA). ECG-triggered M-mode, 2-dimensional and Doppler data were collected and digitally stored in order to facilitate off-line analysis (EchoPac 113, General Electric Vingmed Ultrasound, Milwaukee, USA). LV end-systolic (LVESV) and end-diastolic (LVEDV) volumes were measured on 2-dimensional apical 2- and 4-chamber views according to the Simpson's method, whereafter LVEF was calculated.¹³ The LA volume was measured during mid-systole in optimized apical 2- and 4-chamber views, while the mitral valve annulus diameter was similarly measured during mid-systole in an apical 4-chamber view and a parasternal long-axis view (Figure 1). Both qualitative and quantitative parameters were employed to grade FMR severity according to contemporary recommendations on an ordinal scale, with none=0, mild=1, moderate=2, moderate to severe=3 and severe=4.¹⁴ Improvement in FMR was defined as ≥ 1 grade decrease from baseline to 6-month follow-up.

Statistical analysis

Continuous data are presented with means and standard deviations, while categorical data are expressed in numbers and percentages. Independent samples t-tests were used to compare continuous variables and χ^2 tests, as well as Fisher's exact tests (as appropriate) for comparison of categorical variables. A binary logistic regression analysis was performed to investigate the association of rhythm at baseline with improvement of FMR, correcting for left bundle branch block (LBBB), angiotensin-converting enzyme (ACE)-inhibitor use, rhythm at baseline and biventricular pacing $>90\%$. Analyses were performed with SPSS for Windows, version 23.0 (SPSS, Armonk, NY, USA). All statistical tests were two-sided, and a P-value <0.05 was considered statistically significant.

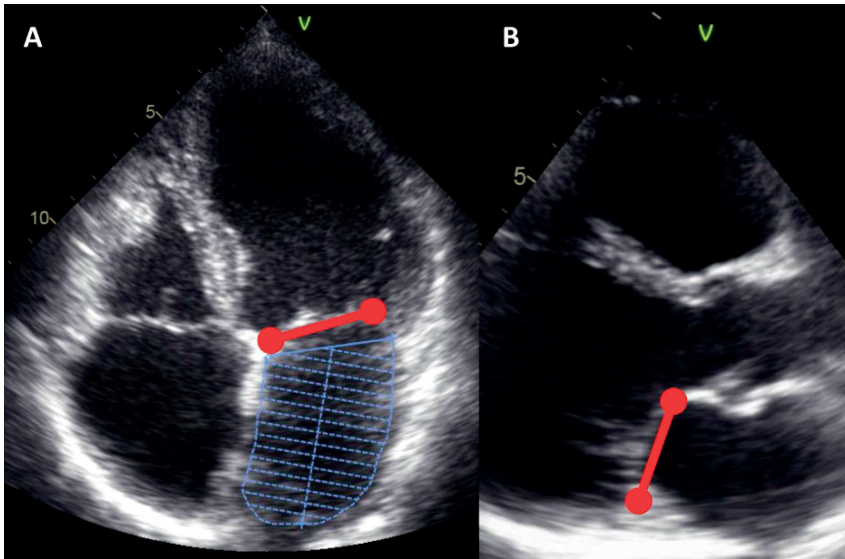


Figure 1: Measurement of mitral annulus diameter. Mitral valve annulus diameter, measured in mid-systole in an apical 4-chamber view (red, dumbbell marker) and left atrial volume, measured in mid-systole in an apical 4-chamber view (blue grid) (A). Mitral annulus diameter, measured in mid-systole in a parasternal, long-axis view (red, dumbbell marker) (B).

RESULTS

Baseline patient characteristics

Of 1 570 heart failure patients treated with CRT, 419 patients (mean age was 66 ± 8 years, 73% male) presented with moderate to severe FMR. Baseline characteristics of patients in AF ($n=101$) and patients in SR ($n=318$) are presented in Table 1. Among patients with baseline AF, 52 (51%) had paroxysmal, 44 (44%) permanent, 4 (4%) persistent and 1 (1%) long-standing persistent AF. Thirty-three (33%) patients with baseline AF underwent direct current cardioversion before CRT implantation, 10 (10%) His bundle ablation and 1 (1%) AF catheter ablation.

Improvement in FMR severity after CRT

CRT induced comparable reductions in LVESV (from baseline to 6 months) for patients in SR at baseline and in patients in AF at baseline: a mean LVESV decrease of 32.1 ± 43.2 ml (18.1%) vs. 27.7 ± 36.3 ml (18.6%), was respectively observed; $P=0.353$ (Figure 2, Table 2). Despite similar extent of LV reverse remodeling, improvement in FMR (from baseline to 6 months) was more frequently observed among patients in SR at baseline as compared to patients in AF at baseline (145 (45.6%) vs. 31 (30.7%), respectively; $P=0.011$) (Figure 3). Interestingly, after 6 months of CRT, patients in SR at baseline demonstrated a smaller LA volume than those in AF at baseline (63.0 ± 26.5 ml vs. 103.1 ± 41.0 ml, respectively; $P<0.001$) (Table 2), as well as a greater decrease

in LA size (10.2% vs. 2.3%, respectively; $P=0.047$) (Table 2). Similarly, patients with SR at baseline evidenced a smaller mitral annulus diameter (measured in the parasternal, long-axis view) (34.5 ± 4.8 mm vs. 39.6 ± 5.2 mm, respectively; $P<0.001$) and a greater degree of mitral annulus remodeling (4.4% vs. 0.0%, respectively; $P<0.001$) at 6 months post-CRT, compared to those with AF at baseline (Table 2). On multivariable, logistic regression analysis, SR at baseline remained independently associated with FMR improvement after CRT (adjusted odds ratio (OR) 1.69; 95% confidence interval (CI) 1.02-2.83; $P=0.04$). These results suggest that the atriogenic component of FMR needs to be corrected in addition to LV reverse remodeling to optimize the rate of FMR improvement after CRT implantation.

Table 1: Patient baseline characteristics according to rhythm (atrial fibrillation or sinus rhythm).

	AF (n=101)	SR (n=318)	P-value
Age (years)	70±8	66±10	<0.001
Male gender, n (%)	85 (84.2)	222 (70.0)	0.004
Ischemic etiology, n (%)	53 (52.5)	185 (58.2)	0.357
LBBB, n (%)	41 (40.6)	225 (70.8)	<0.001
QRS duration at baseline (ms)	157.0±34.0	156.0±29.3	0.768
NYHA class, n (%)			
- I	3 (3.0)	8 (2.5)	0.731
- II	24 (23.8)	83 (26.1)	0.696
- III	63 (62.4)	201 (63.2)	0.906
- IV	11 (10.9)	26 (8.2)	0.422
6 MWT (m)	309.4±106.4	317.9±116.9	0.549
QoL score	33.2±19.1	33.4±19.2	0.949
Diabetes mellitus, n (%)	18 (17.8)	63 (19.8)	0.773
eGFR <60 ml/min/1.73 m ² , n (%)	47 (46.5)	142 (44.7)	0.819
LVEF (%)	26.2±8.4	25.0±7.6	0.173
LVEDV (ml)	198.7±72.4	233.0±83.9	<0.001
LVEDVi (ml/m ²)	101.2±36.0	120.5±41.2	<0.001
LVESV (ml)	149.0±62.9	177.3±74.4	0.001
LVESVi (ml/m ²)	76.0±31.5	91.8±37.7	<0.001
LA volume (ml)	105.5±37.7	70.3±25.8	<0.001
Mitral annular diameter (mm)	47.7±5.4	44.0±5.3	<0.001
Medication, n (%)			
- Diuretic	90 (89.1)	263 (82.7)	0.158
- Digoxin	29 (28.7)	47 (14.8)	0.003
- β-blocker	62 (61.4)	236 (74.2)	0.017
- Mineralocorticoid antagonist	50 (49.5)	152 (47.8)	0.819
- ACE-inhibitor/ARB	81 (80.2)	287 (90.3)	0.013

Continuous variables are mean ± standard deviation. AF: atrial fibrillation, ACE: angiotensin-converting enzyme, ARB: angiotensin receptor blocker, eGFR: estimated glomerular filtration rate, LA: left atrial, LBBB: left bundle branch block, LVEF: left ventricular ejection fraction, LVEDV: left ventricular end-diastolic volume, LVEDVi: indexed left ventricular end-diastolic volume, LVESV: left ventricular end-systolic volume, LVESVi: left ventricular end-systolic volume, 6 MWT: 6-minute walk test, NYHA: New York Heart Association, QoL: quality of life, SR: sinus rhythm.

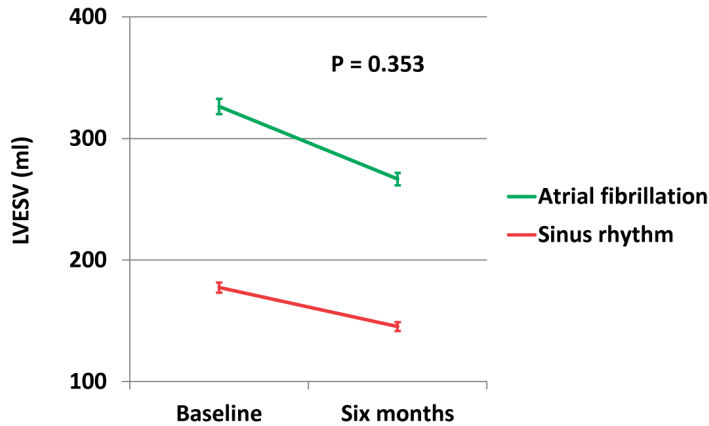


Figure 2: Changes in left ventricular end-systolic volume (LVESV). Change in LVESV from baseline to 6 months after cardiac resynchronization therapy in patients with sinus rhythm vs. atrial fibrillation at baseline. Vertical bars represent standard error of the mean.

DISCUSSION

Heart failure patients with AF before CRT implantation, experienced less improvement in FMR as compared to CRT recipients in SR at baseline. This difference was observed despite a similar extent of LV reverse remodeling after 6 months. Importantly, LA volume and mitral annular dimension were significantly larger in the baseline AF group as compared to the baseline SR group at 6 months after CRT, suggesting an atrial component in the pathophysiology of FMR not fully reversed by CRT.

LV remodeling and FMR improvement in CRT: the impact of AF

LV reverse remodeling defined by a reduction in LVESV has been reported in 62-85% of heart failure patients treated with CRT and is associated with superior survival at follow-up.^{15,16} LV reverse remodeling is one of the mechanisms by which CRT improves FMR. However, CRT reduces the amount of FMR by other mechanisms, including resynchronization of atrioventricular, inter- and intraventricular contraction, and an increase in mitral leaflet closing forces which leads to improved leaflet coaptation.^{3,17,18}

Table 2: Changes in LVESV, LA volume and mitral annular diameters, according to baseline rhythm.

	AF	SR	P-value
LVESV (ml)			
- Baseline	149.0±62.9	177.3±74.4	0.001
- 6 months	121.4±52.2	145.2±65.4	0.001
- Change	27.7±36.3	32.1±43.2	0.353
- % change	18.6	18.1	0.725
LA volume (ml)			
- Baseline	105.5±37.7	70.3±25.8	<0.001
- 6 months	103.1±41.0	63.0±26.5	<0.001
- Change	2.4±29.4	7.2±22.7	0.133
- % change	2.3	10.2	0.047
Mitral annular diameter (A4C view) (mm)			
- Baseline	47.7±5.4	44.0±5.3	<0.001
- 6 months	46.1±5.8	42.3±5.6	<0.001
- Change	1.6±4.8	1.7±5.2	0.820
- % change	3.4	3.9	0.731
Mitral annular diameter (PSLAX view) (mm)			
- Baseline	39.6±5.2	36.1±4.7	<0.001
- 6 months	39.6±5.2	34.5±4.8	<0.001
- Change	0.0±4.2	1.6±3.7	0.001
- % change	0.0	4.4	<0.001

A4C: apical 4-chamber, AF: atrial fibrillation, LA: left atrial, LVESV: left ventricular end-systolic volume, PSLAX: parasternal long-axis, SR: sinus rhythm.

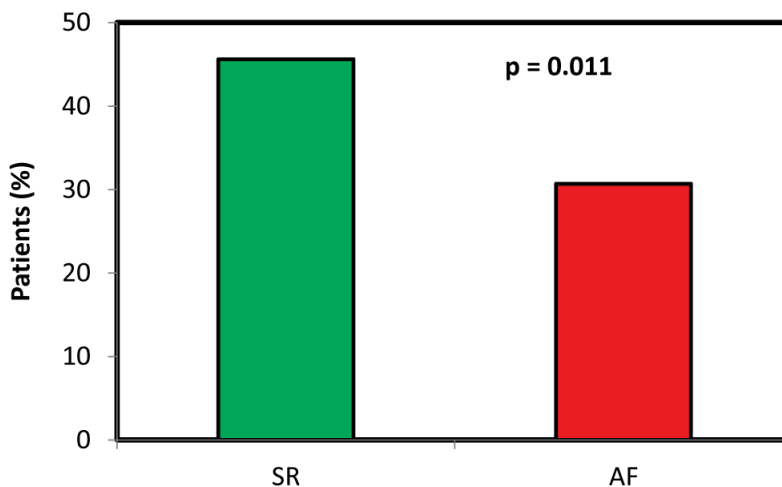


Figure 3: Improvement in functional mitral regurgitation. Percentage (%) of patients demonstrating improvement of functional mitral regurgitation after cardiac resynchronization therapy, according to baseline rhythm. Improvement in FMR (from baseline to 6 months) was more frequently observed among patients in SR at baseline (45.6%), compared to patients in AF at baseline (30.7%). AF: atrial fibrillation, FMR: functional mitral regurgitation, SR: sinus rhythm.

In a study of 673 CRT recipients (162 with AF), no significant difference in the change in LVESV was found between SR and AF groups ($P=0.828$).¹⁹ Our data confirm that there is no appreciable difference in the amount of LV reverse remodeling between CRT recipients with AF and SR at baseline, while a greater reduction in FMR is noted at 6 months in heart failure patients with SR at baseline who are treated with CRT, compared to AF at baseline. The negative impact of baseline AF on the extent of FMR reduction, can therefore not be ascribed only to a differential effect on LV remodeling, and another mechanism should be considered.

Influence of AF on FMR

It is proposed that AF worsens FMR by means of i) mitral annular dilatation, and ii) atrio-genic leaflet tethering (Figure 4).^{20,21} Longstanding AF is firmly linked to LA enlargement.²² Structurally, the mitral annulus is closely related to the LA, and due to the absence of a reinforcing fibrous skeleton, the posterolateral annulus is susceptible to stretching by longitudinal LA muscle fibers when the LA enlarges.⁵ Mitral annular dilatation leads to a reduced coaptation area of the mitral leaflets, and subsequent worsening of FMR.²⁰ AF may worsen FMR by another mechanism, namely atrio-genic leaflet tethering, which implies stretching of the posterior mitral leaflet across the LV wall by LA enlargement, with subsequent displacement/tethering of the anterior mitral valve leaflet away from the papillary muscles.²¹ Two studies have reported an association between AF on the one hand, and an increased mitral annular area and FMR on the other hand.²³ In the present study we found evidence to support these mechanisms in the context of CRT, namely patients with baseline AF having an enlarged LA, less decrease in LA volume, a larger mitral annulus diameter, less mitral annular remodeling and worse FMR at 6 months' follow-up, compared to patients in SR at baseline. The decrease in mitral annular diameter is much more pronounced when measured in the parasternal long-axis view, compared to the apical 4-chamber view. This likely reflects the fact that long-axis measurement transects the fixed annulus and the unsupported part, while the apical 4-chamber measurement may still transect a second, fixed part of the mitral fibrous skeleton (Figure 5).

Effects of CRT on LA and mitral annular size

LA reverse remodeling has been documented after CRT, especially in responders to CRT.^{10,24} The LA volume decreased from $66.8 \pm 25.2 \text{ cm}^3$ to $58.4 \pm 27.8 \text{ cm}^3$ in CRT responders (defined as a reduction of $\geq 10\%$ LVESV) ($P=0.014$) in a study of 107 CRT recipients.²⁴

The effect of CRT on the mitral annulus per se, has not been extensively investigated. In a study of 30 patients with heart failure and FMR, CRT led to an improvement of the mitral annulus area deformation (defined as diastolic mitral annulus area minus systolic mitral annulus area divided by diastolic mitral annulus area, percent) in responders (defined as a patient having a reduction of $\geq 15\%$ LVESV) from $19 \pm 10\%$ to $25 \pm 8\%$, while there was no change in non-responders (from $22 \pm 9\%$ to $22 \pm 9\%$).¹⁸ Conversely, in another study including 26 patients with FMR undergoing CRT, there was no immediate change in the mitral annulus diameter.²⁵

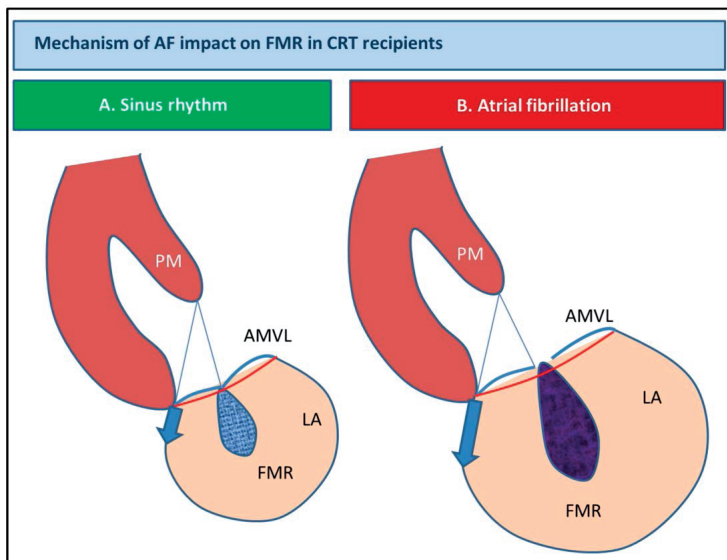


Figure 4: Mechanism of AF impact on FMR in CRT recipients. The mitral annulus (indicated in red) is closely related to the LA, and due to the absence of a reinforcing fibrous skeleton, the posterolateral annulus is susceptible to stretching by longitudinal LA muscle fibers when the LA enlarges (blue arrows indicate stretching forces of the LA on the posterolateral annulus). Mitral annular dilatation leads to a reduced coaptation area of the mitral leaflets (gap between the leaflets in B), and subsequent worsening of FMR. A CRT recipient with SR at baseline is shown in A), and a patient with AF at baseline in B). AF: atrial fibrillation, AMVL: anterior mitral valve leaflet, CRT: cardiac resynchronization therapy, FMR: functional mitral regurgitation, LA: left atrium, PM: papillary muscle, SR: sinus rhythm.

As far as the authors are aware, there are no reports in the literature that describe the differential effect of AF vs. SR at baseline on LA and mitral annular reverse remodeling after CRT. Our data demonstrate that LA volume and mitral annular dimension are significantly larger after CRT in patients with moderate to severe FMR and AF at baseline, compared to those in SR at baseline.

In summary, baseline AF therefore appears to exert an inhibitory effect on LA and mitral annular reverse remodeling after CRT in patients with FMR. This resulted in less improvement in FMR in CRT recipients with baseline AF as compared to patients in SR at baseline.

Clinical implications

Since FMR response to CRT is of prognostic importance, and this response is impaired by AF, mitigating the negative influence of AF on FMR is an attractive therapeutic strategy. In 330 patients with permanent AF who received CRT, 34 (10.3%) spontaneously recovered SR at 4 months.²⁶ In contrast, in a study of 74 patients (27% with persistent AF and 73% with permanent AF), CRT did not induce spontaneous conversion to SR in any patient at 6 months of follow-up.²⁷ With the current findings, it is unclear if awaiting a spontaneous return to SR after CRT is the optimal strategy. Various additional treatment options could be considered

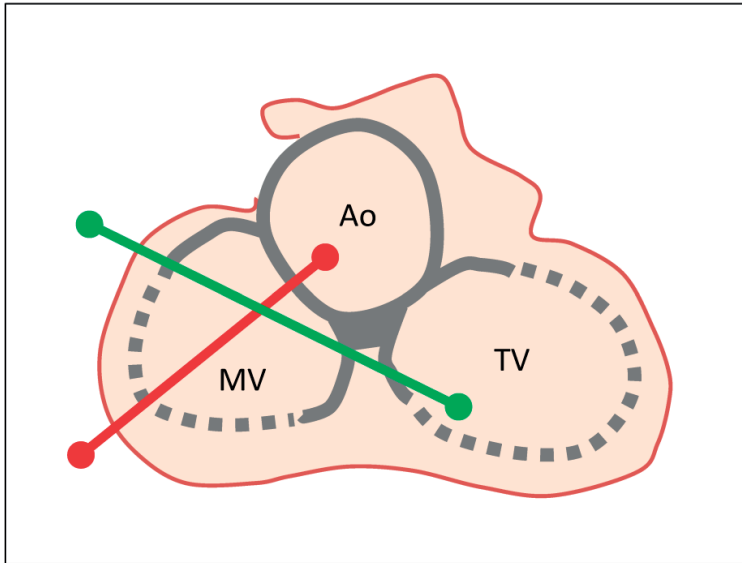


Figure 5: Differences in mitral annular remodeling, when measured in apical 4-chamber view and parasternal, long-axis view. The decrease in mitral annular diameter is much more pronounced when measured in the parasternal long-axis view, compared to the apical 4-chamber view. This likely reflects the fact that long-axis measurement (red line) transects the fixed annulus (solid grey line) and the unsupported part (dashed, grey line), while the apical 4-chamber measurement (green line) may still transect a second, fixed part of the mitral fibrous skeleton (solid grey line) in some patients. This will therefore underestimate the effect of cardiac resynchronization therapy on mitral annular remodeling. Ao: aorta, MV: mitral valve, TV: tricuspid valve.

to restore SR in AF patients, including pharmacological and electrical cardioversion, as well as catheter ablation. In a study by Gertz et al. 53 patients with moderate to severe FMR who underwent AF catheter ablation, the mitral annular dimension was significantly larger in those with recurrent AF compared to patients who remained in SR (3.48 ± 0.34 cm vs. 3.24 ± 0.32 cm, respectively; $P=0.06$) at one year.²⁸ In the same study, the LA volume was larger in patients with recurrent AF as compared to patients who remained in SR (66.4 ± 18.4 ml vs. 52.4 ± 12.7 ml, respectively; $P=0.02$) at one year follow-up.²⁸ Moreover, significant FMR at one year follow-up was observed in 24% of patients in SR as compared to 82% in patients with AF at one year follow-up ($P=0.005$).²⁸ Although this study was not performed in patients undergoing CRT, the results suggest that AF ablation has the potential to reduce FMR in CRT recipients by reducing LA volume and mitral annular diameter.

Currently, one trial investigated AF recurrence after radiofrequency catheter ablation in patients who previously underwent CRT; Di Biase et al. randomized CRT recipients to AF ablation or amiodarone use, with a minimum follow-up of 2 years.⁶ The recurrence of AF was significantly lower in the patients undergoing ablation as compared to the patients using amiodarone (30% vs. 66%, respectively; $P<0.001$) and a significant mortality difference was observed in favour of ablation (8% vs. 18%; $P=0.037$).⁶ The concept of an atrial myopathy has gained

attention in recent years, with those having more advanced electromechanical atrial disease (e.g. fibrosis, visualized with cardiac magnetic resonance imaging) responding less well to catheter ablation.²⁹ It is not inconceivable that patients with advanced atrial myopathy and/or long-standing AF will also respond suboptimally to ablative therapy in terms of FMR reduction. Even though the success rate of AF ablation is more variable in persistent and long-standing AF, mitral annular reverse remodeling and a decrease in AF recurrence in CRT patients were seen in those studies where such patients were included.^{6, 28}

Recently, the Catheter Ablation versus Standard Conventional Therapy in Patients with Left Ventricular Dysfunction and Atrial Fibrillation (CASTLE-AF) trial demonstrated lower all-cause mortality and heart failure hospitalization in heart failure patients with AF who underwent catheter ablation, when compared to medical therapy.³⁰ Of the patients who underwent ablation, 27% had a CRT device in situ.³⁰ Although reduction in FMR was not reported, this trial provides further support for the role of catheter ablation in the management of AF in heart failure patients, including those with CRT.

Study limitations

This was a single-center, retrospective study. The severity of FMR can be influenced by different hemodynamic conditions, although only hemodynamically stable patients were included in the current analysis. The differences between the amount of change in chamber dimensions (Table 2) of CRT recipients with SR and AF at baseline, have to be interpreted cautiously due to fairly large standard deviations.

CONCLUSIONS

Improvement of FMR is more often observed in CRT recipients in SR at baseline, as compared to patients with AF at baseline, despite a similar degree of LV reverse remodeling at 6 months after CRT. LA volume and mitral annular diameter are larger at 6 months in the patients with AF at baseline, suggesting that these mechanisms may relate to the adverse effect of AF on FMR improvement following CRT. AF rhythm control (especially by means of catheter ablation) is therefore a potential therapeutic target to improve FMR after CRT in patients with AF, although the response in those with permanent AF may be variable, compared to paroxysmal AF.

REFERENCES

1. Bursi F, Enriquez-Sarano M, Nkomo VT et al. Heart failure and death after myocardial infarction in the community: the emerging role of mitral regurgitation. *Circulation* 2005;111:295-301.
2. Rossi A, Dini FL, Faggiano P et al. Independent prognostic value of functional mitral regurgitation in patients with heart failure. A quantitative analysis of 1256 patients with ischaemic and non-ischaemic dilated cardiomyopathy. *Heart* 2011;97:1675-80.
3. Spartera M, Galderisi M, Mele D et al. Role of cardiac dyssynchrony and resynchronization therapy in functional mitral regurgitation. *Eur Heart J Cardiovasc Imaging* 2016;17:471-80.
4. Ponikowski P, Voors AA, Anker SD et al. 2016 ESC Guidelines for the diagnosis and treatment of acute and chronic heart failure: The Task Force for the diagnosis and treatment of acute and chronic heart failure of the European Society of Cardiology (ESC) Developed with the special contribution of the Heart Failure Association (HFA) of the ESC. *Eur Heart J* 2016;37:2129-200.
5. Tanimoto M, Pai RG. Effect of isolated left atrial enlargement on mitral annular size and valve competence. *Am J Cardiol* 1996;77:769-74.
6. Di Biase L, Mohanty P, Mohanty S et al. Ablation versus amiodarone for treatment of persistent atrial fibrillation in patients with congestive heart failure and an implanted device: results from the AATAC multicenter randomized trial. *Circulation* 2016;133:1637-44.
7. Swedberg K, Olsson LG, Charlesworth A et al. Prognostic relevance of atrial fibrillation in patients with chronic heart failure on long-term treatment with beta-blockers: results from COMET. *Eur Heart J* 2005;26:1303-8.
8. Hoppe UC, Casares JM, Eiskjær H et al. Effect of cardiac resynchronization on the incidence of atrial fibrillation in patients with severe heart failure. *Circulation* 2006;114:18-25.
9. Brignole M, Auricchio A, Baron-Esquivias G et al. 2013 ESC Guidelines on cardiac pacing and cardiac resynchronization therapy: the task force on cardiac pacing and resynchronization therapy of the European Society of Cardiology (ESC). Developed in collaboration with the European Heart Rhythm Association (EHRA). *Eur Heart J* 2013;34:2281-329.
10. Lellouche N, De Diego C, Vaseghi M et al. Cardiac resynchronization therapy response is associated with shorter duration of atrial fibrillation. *Pacing Clin Electrophysiol* 2007;30:1363-8.
11. Van der Bijl P, Khidir M, Leung M et al. Impact of QRS complex duration and morphology on left ventricular reverse remodelling and left ventricular function improvement after cardiac resynchronization therapy. *Eur J Heart Fail* 2017;19:1145-51.
12. Kirchhof P, Benussi S, Kotecha D et al. 2016 ESC Guidelines for the management of atrial fibrillation developed in collaboration with EACTS. *Eur Heart J* 2016;37:2893-962.
13. Lang RM, Badano LP, Mor-Avi V et al. Recommendations for cardiac chamber quantification by echocardiography in adults: an update from the American Society of Echocardiography and the European Association of Cardiovascular Imaging. *Eur Heart J Cardiovasc Imaging* 2015;16:233-70.
14. Lancellotti P, Tribouilloy C, Hagendorff A et al. Recommendations for the echocardiographic assessment of native valvular regurgitation: an executive summary from the European Association of Cardiovascular Imaging. *Eur Heart J Cardiovasc Imaging* 2013;14:611-44.
15. Bertini M, Hoke U, van Bommel RJ et al. Impact of clinical and echocardiographic response to cardiac resynchronization therapy on long-term survival. *Eur Heart J Cardiovasc Imaging* 2013;14:774-81.

16. Gold MR, Daubert C, Abraham WT et al. The effect of reverse remodeling on long-term survival in mildly symptomatic patients with heart failure receiving cardiac resynchronization therapy: results of the REVERSE study. *Heart Rhythm* 2015;12:524-30.
17. Breithardt OA, Sinha AM, Schwammenthal E et al. Acute effects of cardiac resynchronization therapy on functional mitral regurgitation in advanced systolic heart failure. *J Am Coll Cardiol* 2003;41:765-70.
18. Porciani MC, Macioce R, Demarchi G et al. Effects of cardiac resynchronization therapy on the mechanisms underlying functional mitral regurgitation in congestive heart failure. *Eur J Echocardiogr* 2006;7:31-9.
19. Gasparini M, Auricchio A, Regoli F et al. Four-year efficacy of cardiac resynchronization therapy on exercise tolerance and disease progression: the importance of performing atrioventricular junction ablation in patients with atrial fibrillation. *J Am Coll Cardiol* 2006;48:734-43.
20. Otsuji Y, Kumanohoso T, Yoshifuku S et al. Isolated annular dilation does not usually cause important functional mitral regurgitation: comparison between patients with lone atrial fibrillation and those with idiopathic or ischemic cardiomyopathy. *J Am Coll Cardiol* 2002;39:1651-6.
21. Silbiger JJ. Does left atrial enlargement contribute to mitral leaflet tethering in patients with functional mitral regurgitation? Proposed role of atrio-genic leaflet tethering. *J Heart Valve Dis* 2014;23:385-6.
22. Wozakowska-Kaplon B. Changes in left atrial size in patients with persistent atrial fibrillation: a prospective echocardiographic study with a 5-year follow-up period. *Int J Cardiol* 2005;101:47-52.
23. Kihara T, Gillinov AM, Takasaki K et al. Mitral regurgitation associated with mitral annular dilation in patients with lone atrial fibrillation: an echocardiographic study. *Echocardiography* 2009;26:885-9.
24. Yu CM, Fang F, Zhang Q et al. Improvement of atrial function and atrial reverse remodeling after cardiac resynchronization therapy for heart failure. *J Am Coll Cardiol* 2007;50:778-85.
25. Kanzaki H, Bazaz R, Schwartzman D et al. A mechanism for immediate reduction in mitral regurgitation after cardiac resynchronization therapy: insights from mechanical activation strain mapping. *J Am Coll Cardiol* 2004;44:1619-25.
26. Gasparini M, Steinberg JS, Arshad A et al. Resumption of sinus rhythm in patients with heart failure and permanent atrial fibrillation undergoing cardiac resynchronization therapy: a longitudinal observational study. *Eur Heart J* 2010;31:976-83.
27. Kies P, Leclercq C, Bleeker GB et al. Cardiac resynchronisation therapy in chronic atrial fibrillation: impact on left atrial size and reversal to sinus rhythm. *Heart* 2006;92:490-4.
28. Gertz ZM, Raina A, Saghy L et al. Evidence of atrial functional mitral regurgitation due to atrial fibrillation: reversal with arrhythmia control. *J Am Coll Cardiol* 2011;58:1474-81.
29. Goldberger JJ, Arora R, Green D et al. Evaluating the atrial myopathy underlying atrial fibrillation: identifying the arrhythmogenic and thrombogenic substrate. *Circulation* 2015;132:278-91.
30. Marrouche NF, Brachmann J, Andresen D et al. Catheter ablation for atrial fibrillation with heart failure. *N Engl J Med* 2018;378:417-27.

