



Universiteit
Leiden
The Netherlands

Clinically suspect arthralgia and early rheumatoid arthritis: advances in imaging and impact on daily life

Boer, A.C.

Citation

Boer, A. C. (2020, June 9). *Clinically suspect arthralgia and early rheumatoid arthritis: advances in imaging and impact on daily life*. Retrieved from <https://hdl.handle.net/1887/97600>

Version: Publisher's Version

License: [Licence agreement concerning inclusion of doctoral thesis in the Institutional Repository of the University of Leiden](#)

Downloaded from: <https://hdl.handle.net/1887/97600>

Note: To cite this publication please use the final published version (if applicable).

Cover Page



Universiteit Leiden



The handle <http://hdl.handle.net/1887/97600> holds various files of this Leiden University dissertation.

Author: Boer, A.C.

Title: Clinically suspect arthralgia and early rheumatoid arthritis : advances in imaging and impact on daily life

Issue Date: 2020-06-09

4

Do musculoskeletal ultrasound and magnetic resonance imaging identify synovitis and tenosynovitis at the same joints and tendons? A comparative study in early inflammatory arthritis and clinically suspect arthralgia



Sarah Ohrndorf*
Aleid Boer*
Debbie Boeters
Robin ten Brinck
Gerd Burmester
Marion Kortekaas
Annette van der Helm - van Mil
**share first authorship*

Abstract

Objective

Ultrasound (US) and magnetic resonance imaging (MRI) are recommended in the diagnostic process of rheumatoid arthritis. Research on its comparability in early disease phases is scarce. Therefore, we compared synovitis and tenosynovitis detected by US and MRI on joint/tendon level.

Methods

Eight hundred forty joints and 700 tendons of 70 consecutive patients, presenting with inflammatory arthritis or clinically suspect arthralgia, underwent US and MRI of MCP (2–5), wrist and MTP (1–5) joints at the same day. Greyscale (GS) and power Doppler (PD) synovitis were scored according to the modified Szkudlarek method (combining synovial effusion and hypertrophy) and the recently published EULAR-OMERACT method (synovial hypertrophy regardless of the presence of effusion) on static images. US-detected tenosynovitis was scored according to the OMERACT. MRI scans were scored according to the RAMRIS. Test characteristics were calculated on joint/tendon level with MRI as reference. Cut-off for US-scores were ≥ 1 and ≥ 2 and for MRI ≥ 1 .

Results

Compared to MRI, GS synovitis according to EULAR-OMERACT (cut-off ≥ 1) had a sensitivity ranging from 29 to 75% for the different joint locations; specificity ranged from 80 to 98%. For the modified Szkudlarek method, the sensitivity was 68–91% and specificity 52–71%. PD synovitis had a sensitivity of 30–54% and specificity 97–99% compared to MRI. The sensitivity to detect GS tenosynovitis was 50–78% and the specificity 80–94%. For PD tenosynovitis, the sensitivity was 19–58% and specificity 98–100%.

Conclusion

Current data showed that US is less sensitive than MRI in the early detection of synovitis and tenosynovitis, but resulted in only few non-specific findings. The higher sensitivity of MRI is at the expense of less accessibility and higher costs.

Background

The value of sensitive imaging methods such as musculoskeletal ultrasound (US) and magnetic resonance imaging (MRI) for disease monitoring in rheumatoid arthritis (RA) is currently being discussed.[1] The diagnostic value of US and MRI in very early disease phases of RA is also being investigated, and there appears to be an agreement on the notion that these modalities have an added value in the diagnostic process.[1] The EULAR imaging taskforce also recommended the use of US and MRI for this purpose without distinguishing between both modalities.[2] These modalities have advantages and disadvantages. MRI is generally considered as the most valid method, yielding reproducible results in a three-dimensional view, and it has the advantage that it depicts bone marrow oedema. Its use is limited by insufficient availability in several centres and higher costs. A disadvantage of US is the machine and operator dependency. Currently available data obtained in patients at risk for RA revealed that US-detected synovitis or tenosynovitis scores (greyscale (GS) or power Doppler (PD)) and MRI-detected synovitis or tenosynovitis scores were predictive for RA development.[3–10] These studies generally used only one modality and did not directly compare findings of both modalities.

Presently, there is limited knowledge whether US and MRI identify the same lesions in the earliest phase of RA. One study compared MRI and US on joint/tendon level in patients with early classified RA; data suggested that MRI is more sensitive than US.[11] The existing studies in early arthritis or arthralgia that performed both MRI and US did not make comparisons on joint or tendon level, did not include the feet, or used low-field MRI.[12–15] In addition, only few studies included tenosynovitis,[11–13] and none of them used standardised scoring methods such as the recently published EULAR-OMERACT method for US scoring.[16]

Therefore, we aimed to evaluate to what extent both modalities can be used interchangeably in patients at risk for RA. We conducted a cross-sectional study in patients presenting with early inflammatory arthritis (IA) or clinically suspect arthralgia (CSA) and investigated on joint and tendon levels whether US and MRI detected the same inflammatory lesions (synovitis and tenosynovitis).

Methods

Patients

Patients that newly presented with early IA or CSA between May and October 2017 at the Leiden rheumatology outpatient clinic were studied. They were consecutively included in either the Early Arthritis Clinic (EAC) cohort or the CSA cohort. Requirements for inclusion in both cohorts are described in reference and supplementary.[8, 17] Both cohort studies were approved by the local Medical Ethical Committee. All patients provided informed consent.

Study protocol

All patients underwent unilateral contrast-enhanced MRI of metacarpophalangeal (MCP), wrist, and metatarsophalangeal (MTP) joints and musculoskeletal US at the same day <2 weeks after first presentation.

According to the protocol, imaging was done before disease-modifying antirheumatic drug (DMARD) initiation (including glucocorticoids) in patients with IA. DMARDs were not prescribed to patients with CSA. All patients were asked to stop NSAIDs 24 h before imaging. More details are provided supplementary.

MR imaging and scoring

All patients were scanned on the same scanner (an MSK Extreme 1.5 T extremity MR system (GE Healthcare, Wisconsin, USA)). Unilateral MRI scans of wrist, MCP (2–5) and MTP (1–5) joints were made of the most affected side, or the dominant side in case of equally severe symptoms. Sequences acquired were coronal pre-contrast T1-weighted fast spin-echo (FSE) and coronal and axial post-contrast T1-weighted FSE with frequency-selective fat suppression of MCP and wrist, and post-contrast coronal and axial sequences of the MTP joints. More details are provided in reference and supplementary.[17]

Each MRI-scan was scored according to RA MRI scoring (RAMRIS) method by two experienced readers (inter-reader intraclass correlation coefficients (ICC) > 0.94).[18, 19] MRI scores for joints (synovitis) and tendons (tenosynovitis) ranged from 0 to 3. Mean scores of two readers were calculated and lesions were considered absent in case it was scored by only one reader.

Musculoskeletal ultrasound scanning and scoring

A high-end US machine was used (GE Logiq E9, Genova, Italy) with a linear array transducer of 6–15 MHz. US examinations were performed bilaterally in GS and PD mode according to a standardised protocol. The same locations that were scanned by MRI were studied here. PD was assessed with a pulse repetition frequency of 0.8 kHz, and gain was set to a level until background signal was removed. The presence of synovitis was assessed on a semiquantitative scale (0–3) for GS/PD according to Szkudlarek *et al.*,[20] and synovial effusion and hypertrophy were combined (called ‘modified Szkudlarek method’).[21] Tenosynovitis was examined on a semi-quantitative scale (0–3) for GS/PD according to OMERACT.[22] A detailed US-scoring protocol is provided supplementary. All US scores per joint/tendon ranged from 0 to 3. During the study, the newly developed EULAR-OMERACT-scoring method for synovitis was published.[16] To explore if the results changed when this definition was used, the static images of US were re-scored for GS synovitis by two examiners (ICC 0.92) and mean scores were calculated. The different scoring methods are described in supplementary Table 4.4 and in the supplementary methods. Imaging results were not communicated to clinicians at any time point.

Statistical analyses

We compared semi-quantitative scores of US-detected synovitis and tenosynovitis to MRI-detected synovitis and tenosynovitis scores (each on a scale from 0 to 3),

respectively, for each location using spearman’s correlation coefficients. For the primary analyses, we used the method according to the EULAR-OMERACT for GS synovitis. After analysing (semi-)quantitative data, US and MRI scores were dichotomized. For US, different cut-offs were studied: ≥ 1 and ≥ 2 for GS-synovitis, ≥ 1 for PD-synovitis and ≥ 1 for GS/PD-tenosynovitis. Additionally, GS synovitis and tenosynovitis scores ≥ 2 or PD ≥ 1 were combined. MRI-scores were dichotomized with ≥ 1 as cut-off and also on a cut-off based on findings from symptom-free volunteers, which has been published previously.[23] Then, an MRI was considered positive if synovitis or tenosynovitis was seen in <5% age-matched healthy controls. We calculated test characteristics for US with MRI as reference. Analyses were done on individual joint/tendon level and firstly presented on joint-group level (wrist, MCP, MTP joints) for reasons of clarity. Sub-analyses included stratification for patients presenting with IA and CSA and presentation of data at individual joint/tendon level. Finally, for GS synovitis, the ‘modified Szkudlarek method’ was compared to the EULAR-OMERACT method and also compared to MRI.[16, 18, 21] IBM SPSS (New York, USA) v23 was used.

Results

Study population

Seventy patients newly presenting to the rheumatology outpatient clinic (40 with recent-onset CSA, 30 with early IA) were included. Table 4.1 presents their baseline characteristics. The majority was female; mean age was 45 for patients with CSA and 57 for patients with IA (supplementary Table 4.5). In total, 840 joints and 700 tendons were examined.

Table 4.1: Baseline characteristics of 70 patients studied.

	All patients (n=70)
Age, mean (SD)	50 (15)
Female, n (%)	43 (61)
68-Tender joint count, median (IQR)	5 (2-8)
66-Swollen joint count, median (IQR)	2 (1-6)
CRP (mg/L), median (IQR)	3 (3-11)
RF positive (≥ 3.5 IU/mL), n (%)	20 (29)
ACPA positive (≥ 7 U/mL), n (%)	16 (23)
Either RF or ACPA positive, n (%)	22 (31)

*Swollen joint count based on inflammatory arthritis (IA)-patients, as all clinically suspect arthralgia (CSA)-patients per definition do not have swollen joints.

ACPA, anti-citrullinated peptide antibody (anti-CCP2, EliA CCP, Phadia, the Netherlands, positive if ≥ 7 U/mL); RF, immunoglobulin M-rheumatoid factor (RF) (positive if ≥ 3.5 IU/mL); CRP, c-reactive protein (positive if ≥ 5 mg/L); SD, standard deviation; IQR, Inter quartile range.

Table 4.2: Test characteristics for ultrasound-detected synovitis and tenosynovitis with MRI as reference

	Sensitivity		Specificity		AUC		Sensitivity		Specificity		AUC	
	GS ≥ 1 (EULAR-OMERACT)		GS ≥ 1 (EULAR-OMERACT)		PD ≥ 1		GS ≥ 2 (EULAR-OMERACT) or PD ≥ 1		GS ≥ 2 (EULAR-OMERACT) or PD ≥ 1		GS ≥ 2 or PD ≥ 1	
Synovitis	GS ≥ 1 (EULAR-OMERACT)		GS ≥ 1 (EULAR-OMERACT)		PD ≥ 1		GS ≥ 2 (EULAR-OMERACT) or PD ≥ 1		GS ≥ 2 (EULAR-OMERACT) or PD ≥ 1		GS ≥ 2 or PD ≥ 1	
MCP joints	39 (27; 53)	98 (95; 99)	0.69	54 (41; 66)	97 (94; 99)	0.75	54 (41; 66)	97 (94; 99)	0.75	54 (41; 66)	97 (94; 99)	0.75
Wrist joints	29 (19; 40)	94 (89; 97)	0.61	30 (21; 41)	99 (95; 100)	0.64	30 (21; 41)	99 (95; 100)	0.64	30 (21; 41)	99 (95; 100)	0.64
MTP joints	75 (61; 85)	80 (75; 85)	0.78	41 (28; 56)	99 (97; 99)	0.70	68 (53; 80)	86 (81; 89)	0.70	68 (53; 80)	86 (81; 89)	0.77
Tenosynovitis	GS ≥ 1		PD ≥ 1		GS ≥ 2 or PD ≥ 1		GS ≥ 2 or PD ≥ 1		GS ≥ 2 or PD ≥ 1		GS ≥ 2 or PD ≥ 1	
Extensor wrist tendons	78 (59; 86)	80 (74; 86)	0.78	58 (42; 73)	98 (95; 99)	0.78	67 (50; 80)	97 (93; 98)	0.78	67 (50; 80)	97 (93; 98)	0.82
Flexor wrist tendons	50 (31; 69)	94 (90; 97)	0.72	42 (24; 61)	99 (97; 100)	0.71	50 (31; 69)	99 (96; 100)	0.71	50 (31; 69)	99 (96; 100)	0.75
Flexor MCP tendons	74 (60; 84)	89 (84; 92)	0.81	19 (11; 31)	100 (98; 100)	0.59	36 (24; 49)	100 (98; 100)	0.59	36 (24; 49)	100 (98; 100)	0.68

Test characteristics are shown in percentages with a 95% CI except for the AUC, area under the receiver operating characteristic curve; GS: Grey-scale; PD: Power Doppler.

Synovitis detected by US versus MRI

Figure 4.1 (a–c) presents the scores for GS-detected synovitis (EULAR-OMERACT method) versus MRI-detected synovitis (OMERACT-RAMRIS method). Analyses were performed on individual joints and tendons (i.e. MCP-2 of US versus MRI) and presented per joint group (MCPs, wrist, MTPs). All scores within joint groups were significantly correlated (Supplementary Table 4.6). In MTP joints, MRI scores of 0 infrequently coincided with scores of 1 for US (Figure 4.1 c); this is in contrast to findings on MCP and wrist level (Figure 4.1 a, b). In line with this observation, the corresponding test characteristics showed a high specificity (> 90%) for GS synovitis of wrist and MCP joints and a somewhat lower specificity of 80% for MTP joints. The sensitivity was poor for MCP and wrist (29–39%) and higher (75%) for MTP joints with MRI as reference (Table 4.2).

Subsequently, PD synovitis scores were compared to MRI. Also here, increased US scores were accompanied by increased MRI scores, and correlations were statistically significant (supplementary Table S3, *online available*). As presented (4.1 d–f), PD scores were only rarely ≥ 1 when MRI-detected synovitis scores were 0. Furthermore, we observed regularly that PD scores were 0 for joints that were scored ≥ 1 by MRI. These observations were reflected by the test characteristics, which showed a high specificity for PD (97–99%) for all locations (MTP, MCP, wrist) with only a low to moderate sensitivity (30–54%, Table 4.2).

Test characteristics when US positivity was defined by a combination of GS scores ≥ 2 or PD ≥ 1 are provided in Table 4.2. The combined scores showed a high specificity (> 92%) accompanied by an increased sensitivity for the MCP and wrist joints (30–54%) but not for the MTP joints (68%) in comparison to GS/PD alone.

Tenosynovitis detected by US versus MRI

Figure 4.2 (a–c) presents the data of GS-detected tenosynovitis versus MRI-detected tenosynovitis scores. MRI scores were significantly correlated to GS scores (supplementary Table S3). However, scores ≥ 1 for MRI were also often accompanied by US scores of 0. Test characteristics were in line with these observations, with a specificity of 80% for the extensor wrist tendons and > 89% for the other tendons (flexor wrist, flexor MCPs), and a moderate sensitivity (50–78%, Table 4.2).

Figure 4.2 (d–f) shows the data of PD tenosynovitis versus MRI. PD signals were infrequently increased. MRI detected 113 tendons with tenosynovitis (out of 700), while for PD this was only 45. The corresponding test characteristics in Table 4.2 showed a high specificity (98–100%) with a low to moderate sensitivity (19–58%).

Defining tenosynovitis as a combination of GS ≥ 2 or PD ≥ 1 slightly improved the test characteristics for the extensor and flexor tendons of the wrist, but not for the flexor tendons of the MCPs, compared to the separate ultrasound features (GS/PD) (Table 4.2).

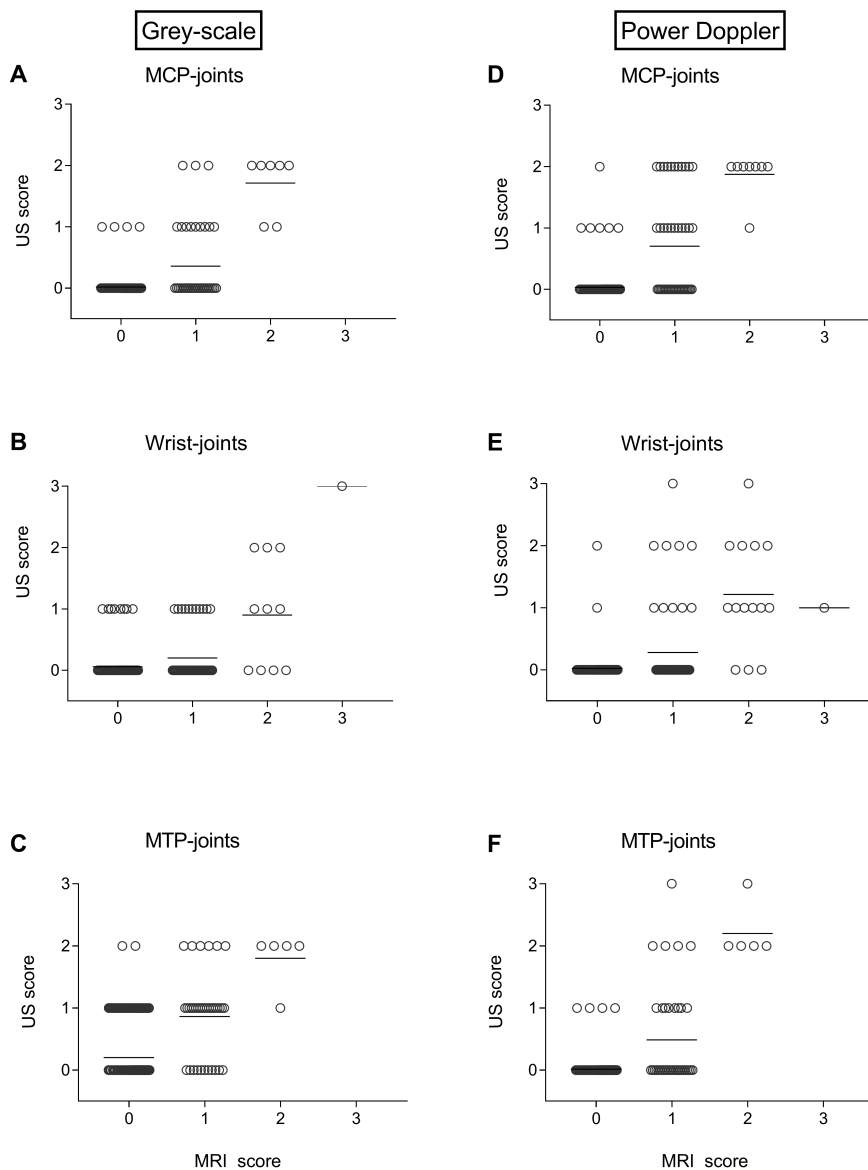


Figure 4.1: Grey-scale Ultrasound (according to EULAR-OMERACT definition, A,B,C) and power Doppler Ultrasound-detected synovitis (D,E,F) versus MRI-detected synovitis on MCP, wrist, and MTP joint level. Legend: Number of corresponding joints per MRI score was for A) 0: 222, 1: 42, 2: 7, 3: 0; B) 0: 136, 1: 55, 2: 10, 3: 1; C) 0: 285, 1: 39, 2: 5, 3: 0; D) 0: 224, 1: 48, 2: 8, 3: 0; E) 0: 137, 1: 58, 2: 14, 3: 1; F) 0: 296, 1: 39, 2: 5, 3: 0. Bars indicate the mean.

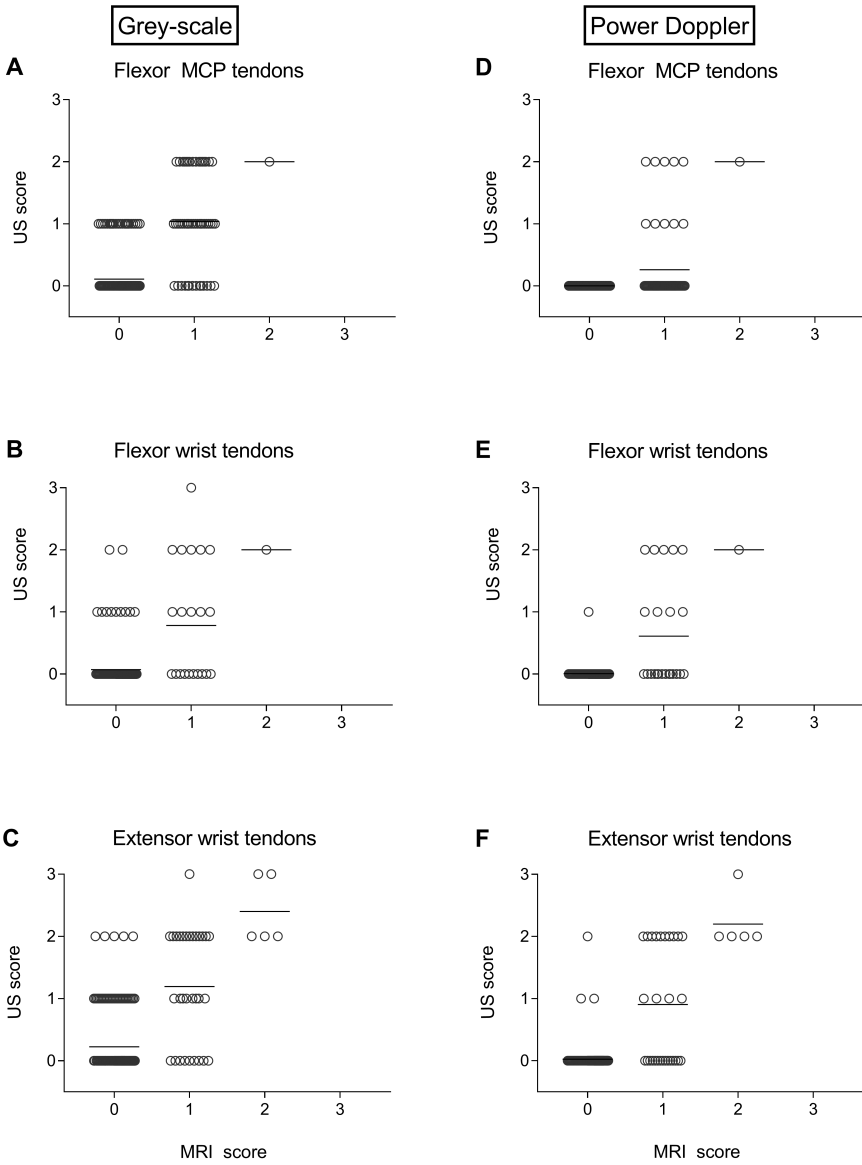


Figure 4.2: Grey-scale (A,B,C) and power Doppler Ultrasound-detected tenosynovitis (D,E,F) versus MRI-detected tenosynovitis of MCP flexor 2-5, wrist flexor and extensor tendons. Legend: Number of corresponding tendons per MRI-score was for A) 0: 226, 1: 52, 2: 1, 3: 0; B) 0: 186, 1: 23, 2: 1, 3: 0; C) 0: 173, 1: 32, 2: 5, 3: 0; D) 0: 226, 1: 52, 2: 1, 3: 0; E) 0: 185, 1: 23, 2: 1, 3: 0; F) 0: 171, 1: 32, 2: 5, 3: 0. Bars indicate the mean.

Cut-off for synovitis and tenosynovitis based on healthy volunteers

To investigate whether the excess of increased MRI-detected scores compared to US scores could be explained by the definition of positivity for MRI, we also applied a cut-off based on findings from symptom-free volunteers.[23] This resulted in a slightly increased sensitivity and AUC for GS-detected (teno)synovitis, while the specificity remained high compared to the main analyses. For PD, it only caused small differences (supplementary Table 4.7).

Sub-analyses stratified for IA and CSA

In supplementary Figure S1-S4, we provided the data of the US synovitis and tenosynovitis scores (GS and PD) versus MRI for patients with CSA and IA separately. As expected, synovitis and tenosynovitis were less frequently present and/or less severe in patients with CSA than IA. However, the pattern of concordance between MRI and US was similar. We also calculated test characteristics for patients with CSA and IA separately (supplementary Table 4.8). The sensitivity for US with MRI as reference was lower in CSA than in patients with IA. The specificity was similar in both populations.

Data presented on individual joint/tendon level

For clarity, the main results were presented on joint-group level, although analyses were performed on the joint/tendon level. However, as findings on different joints/tendons might be different and these differences cannot be seen by presentation on the joint-group level, we also provided test characteristics for each joint/tendon separately (supplementary Table 4.9, 4.10). In general, results were similar with a low to moderate sensitivity and high specificity. Remarkably, for the flexor tendons of the wrist (GS), all flexors had high specificity (88–100%). However, the sensitivity varied broadly: 71% for the FPL, 55% for the FCR and only 17% for the FDS/FDP. Also for PD, the sensitivity for tenosynovitis was generally low (17–64%). Examples of MRI-detected (teno)synovitis versus GS/PD are illustrated by 4.3.

Evaluation of two scoring methods for GS-detected synovitis

Due to recent advances in scoring methods for GS, two methods were applied and test characteristics were also determined for GS by the modified Szkudlarek method [21] with MRI as reference (Table 4.3). The modified Szkudlarek method had a higher sensitivity of 68–91% and lower specificity of 52–71% than the EULAR-OMERACT method (sensitivity 29–75%, specificity 80–98%) compared to MRI. Thereafter, we compared the scores of the two scoring methods for GS for each joint. The modified Szkudlarek method generally had higher scores than the EULAR-OMERACT method (see supplementary Table 4.11,4.12,4.13).

Discussion

This large cross-sectional study compared US and MRI findings of synovitis and tenosynovitis on the joint and tendon levels, respectively, in patients newly presenting with early IA and CSA. These are the populations where imaging modalities can have a specific role in the diagnostic process. The newly developed EULAR-OMERACT scoring

method for GS-detected synovitis for US was used. Our data showed that US findings were highly specific and rarely ‘false-positive’, but also less sensitive compared to MRI, resulting in ‘false-negative results’. This suggests that MRI cannot be replaced by US while maintaining its sensitivity on the level of joints and tendons. How this affects the predictive accuracy needs to be investigated further in longitudinal studies.

Two different scoring methods for GS-detected synovitis were applied: the EULAR-OMERACT method and the modified Szkudlarek method, which combines synovial effusion and hypertrophy.[16, 21] Direct comparison of both scoring methods for GS synovitis showed that higher scores were obtained by the modified Szkudlarek method. In line with this and compared to MRI, the modified Szkudlarek method had more false positives which resulted in a higher sensitivity but lower specificity than the EULAR-OMERACT method. The false-positive results (MRI scores 0, GSUS > 0) obtained by the modified Szkudlarek method might be explained by the fact that it evaluates a combination of synovial effusion and hypertrophy, while in the recent EULAR-OMERACT definition hypertrophy regardless of the presence of synovial effusion was evaluated,[16] and the fact that contrast-enhanced MRI also does not visualise joint effusion. Thus, although this study did not primarily aim to compare the ‘old’ and ‘new’ GS synovitis scores, present data also showed the relationship between both GS scoring methods and revealed that the EULAR-OMERACT synovitis score for US was more concordant to the OMERACT-RAMRIS method for MRI. Unfortunately, the definition of the EULAR-OMERACT for GS synovitis was published when this study had already

Table 4.3: Test characteristics for greyscale ultrasound-detected synovitis with MRI as a reference for the ‘old’ synovitis definition according to the modified Szkudlarek method and for the ‘new’ EULAR-OMERACT synovitis definition

	Sensitivity	Specificity	AUC	Sensitivity	Specificity	AUC
Synovitis	GS ≥1 (modified Szkudlarek)			GS ≥2 (modified Szkudlarek)		
MCP joints	73 (60; 83)	70 (64; 76)	0.72	39 (28; 52)	96 (93; 98)	0.68
Wrist joints	68 (57; 78)	71 (63; 78)	0.70	34 (24; 46)	97 (93; 99)	0.66
MTP joints	91 (79; 96)	52 (47; 58)	0.72	64 (49; 76)	92 (88; 94)	0.78
Synovitis	GS ≥1 (EULAR-OMERACT)			GS ≥2 (EULAR-OMERACT)		
MCP joints	39 (27; 53)	98 (95; 99)	0.69	17 (9; 30)	100 (98; 100)	0.58
Wrist joints	29 (19; 40)	94 (89; 97)	0.61	9 (4; 17)	100 (97; 100)	0.54
MTP joints	75 (61; 85)	80 (75; 85)	0.78	23 (13; 37)	99 (97; 100)	0.61

Test characteristics are shown in percentages with a 95% CI except for the AUC, area under the receiver operating characteristic curve. GS: Grey-scale.

started.[16] Consequently, synovitis had already been scored according to the modified Szkudlarek method. Therefore, static US images were rescored according to the EULAR-OMERACT method, which might be a potential limitation, as scoring of static images can be challenging. We used two independent readers to assess the static images; both readers showed excellent agreement between the reading results, which supports the reliability of these data.

Since the role of synovial effusion in the pathologic process of RA and other types of IA is not yet fully understood, synovial effusion was not explicitly taken into account, except within the modified Szkudlarek method.[21] Synovial effusion often has been detected in healthy persons by US, especially in the feet.[24] Unfortunately, up to now, age-related normal values for US-detected pathologies such as synovial effusion, synovial hypertrophy, tenosynovitis and erosions are still unknown and should be subject for future studies. Furthermore, it would be interesting to see the effect of findings in healthy symptom-free individuals for the definition of positivity for US. This is also subject for future research.

Importantly, there were differences between the scoring methods for US and MRI. All scoring methods consisted of semi-quantitative scales ranging from 0 to 3. However, the requirements for each grade were different for US and MRI (Additional file 1:

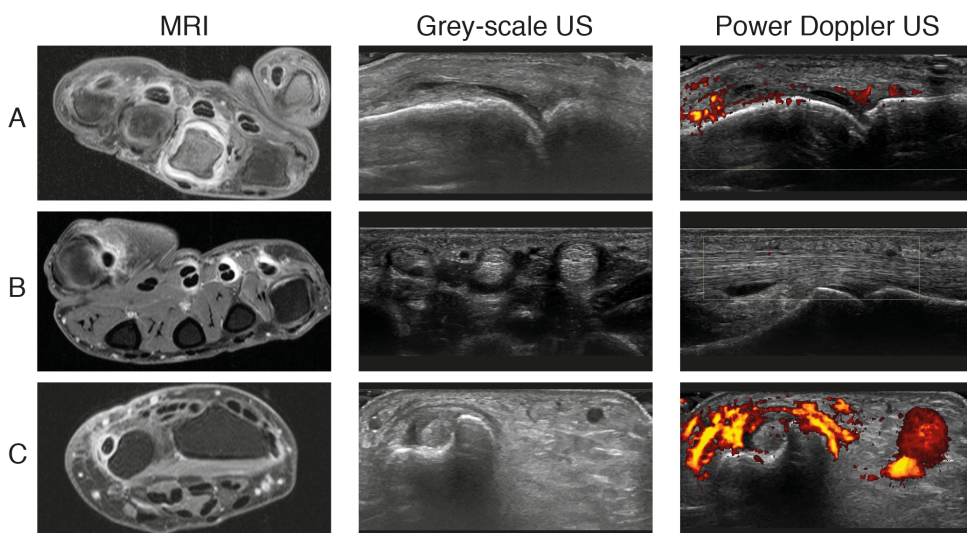


Figure 4.3: Examples of MRI-detected synovitis and tenosynovitis with corresponding Grey-scale and power Doppler ultrasound images. Legend: Examples of inflammation identified by MRI that were verified through ultrasound (US). Even though sometimes more inflammation was present on the MRI-scan we choose to show the corresponding US-images of only one joint or tendon that was present on the image. A shows an example of synovitis MCP-3 by MRI, which was confirmed by Grey-scale (GS) and Power Doppler (PD) US images of the same joint. B shows tenosynovitis of the flexor of MCP-4 which was confirmed by GS but not by PD on US. C shows inflammation of the extensor carpi ulnaris at the wrist-level which was confirmed by both GS and PD on US.

Table S1). Thus, different definitions for the different scoring methods hamper direct comparison of the different grades, though as presented by 4.1 and 4.2, increased US scores generally coincided with increased MRI scores. To assess whether this was similar in patients with CSA and IA, we also repeated the analyses for both populations separately. In both populations, higher US scores were present in patients with higher MRI scores (supplementary Figures S1-S4). However, the test characteristics were not completely similar. Although the specificity for US was similar in both populations, the sensitivity was lower in patients with CSA compared to IA. CSA patients have less severe inflammation than patients with IA and current data implied that in this setting of subclinical inflammation, US is less sensitive than MRI.

Another issue is the cut-off used for dichotomization. Our US cut-offs are frequently used in the literature. For GS, we observed that increasing the cut-off from ≥ 1 to ≥ 2 resulted in an increased specificity and a notably decreased sensitivity. This phenomenon is often observed when changing cut-offs. Based on AUCs, a cut-off ≥ 1 could be considered more favourably than ≥ 2 . Also, the cut-off for MRI positivity was explored. In addition to using a cut-off of mean ≥ 1 , we applied a cut-off based on healthy volunteers.[23] This caused only minor improvements in the test characteristics for US compared to MRI.

A strength of this study was that besides synovitis, also tenosynovitis was evaluated; this imaging feature is less often studied than synovitis while it is important, as tenosynovitis in IA and CSA has been shown predictive of RA development, both in studies that used MRI [9, 25] and US.[7] Furthermore, this study examined patients at risk for RA and applied the new EULAR-OMERACT score for GS-detected synovitis. We also did not only examine the wrist and MCP, but also the MTP joints. In contrast, a recent meta-analysis compared the accuracy of US-detected synovitis versus MRI in wrist, MCP, PIP, and knee joints, but not MTP joints in patients with classified RA.[26] The included studies were also not scored according to the EULAR-OMERACT method. Despite these differences, the sensitivity and specificity for GS/PD-detected synovitis observed in this study compared to our data are roughly similar. Also GS tenosynovitis was previously studied by Wakefield *et al.* in MCP joints of classified RA-patients and were comparable to our results from patients in earlier disease phases, showing a high specificity and moderate sensitivity.[11]

In our data on tenosynovitis, the sensitivity was particularly low for the FDS/FDP tendon. A possible explanation could be that this tendon is located below the retinaculum flexorum, deeper in the wrist tissue than other tendons. Also, PDUS tenosynovitis had only a low to moderate sensitivity, despite the use of high-end US machine with a sensitive power Doppler. PD-detected tenosynovitis had only a small or no additive value to GS tenosynovitis, particularly for the MCP-flexor tendons. A reason for this could be that PD performs better from the dorsal side of the joint than from the palmar side, which may have contributed to this finding.[16, 27] Although replication in other studies is needed, the current data with MR as reference suggests that PDUS-detected tenosynovitis had no clear additive value to GSUS, which is in contrast to findings for

synovitis.

This cross-sectional study is the first that examined the concordance between synovitis detected by US and MRI in the feet of patients with (suspicion on imminent) early RA. Interestingly, GS synovitis had a higher sensitivity in the feet than in the hand joints, which was at the cost of a lower specificity (implying a higher frequency of false-positive signals in MTP joints).

MRI was the reference in this cross-sectional study on the joint/tendon level, showing false-negative findings for synovitis and tenosynovitis. For clinical purposes, analyses on patient level are also relevant, as patients often have > 1 joint affected and at least 1 joint with subclinical inflammation might be considered sufficient to indicate disease. Analyses on the patient level showed that US missed only 1/44 patients (GS) and 14/44 (PD) compared to MRI (cut-offs ≥ 1 , data not shown). Hence, there is less discordance on the patient level than on the joint/tendon level. The comparability of US and MRI to accurately predict RA development remains an outstanding question, for which longitudinal studies with RA development as outcome are needed.

In conclusion, this is the first study that used the recently developed EULAR-OMERACT method for US in comparison to MRI, in patients consecutively presenting with early IA and CSA. These are the populations in which these imaging modalities can be used to detect (imminent) RA. US had a good specificity, but was less sensitive compared to MRI on the local tendon and joint level. However, US is more easily available, less timeconsuming and has lower costs than MRI. Longitudinal studies in 'at-risk' populations are needed to directly compare the predictive accuracy of MRI and US while using up-to-date scoring methods.

Acknowledgements

Rosaline van den Berg, PhD is acknowledged for scoring ultrasound static images.

References

- [1] Caporali R, Smolen JS. Back to the future: forget ultrasound and focus on clinical assessment in rheumatoid arthritis management. *Annals of the Rheumatic Diseases*. 2018;73:1316–1322.
- [2] Colebatch AN, Edwards CJ, Ostergaard M, van der Heijde D, Balint PV, D'Agostino MA, et al. EULAR recommendations for the use of imaging of the joints in the clinical management of rheumatoid arthritis. *Ann Rheum Dis*. 2013;72:804–14.
- [3] van de Stadt LA, Bos WH, Meursing Reynders M, Wieringa H, Turkstra F, van der Laken CJ, et al. The value of ultrasonography in predicting arthritis in auto-antibody positive arthralgia patients: a prospective cohort study. *Arthritis Research & Therapy*. 2010 May;12:Epub.
- [4] Rakieh C, Nam J, Hunt L, Hensor E, Das S, Bissell L, et al. Predicting the development of clinical arthritis in anti-CCP positive individuals with non-specific musculoskeletal symptoms: a prospective observational cohort study. *Annals of the Rheumatic Diseases*. 2015;74:1659–1666.
- [5] Nam J, Hensor E, Hunt L, Conaghan P, Wakefield R, Emery P. Ultrasound findings predict progression to inflammatory arthritis in anti-CCP antibody-positive patients without clinical synovitis. *Annals of the Rheumatic Diseases*. 2016;75:2060–2067.
- [6] Zufferey P, Rebell C, Benaim C, Ziswiler H, Dumusc A, So A. Ultrasound can be useful to predict an evolution towards rheumatoid arthritis in patients with inflammatory polyarthralgia without anticitrullinated antibodies. *Joint Bone Spine*. 2017;84:299–303.
- [7] Sahbuddin I, Pickup L, Nightingale P, Allen G, Cader Z, Singh R, et al. The role of ultrasound-defined tenosynovitis and synovitis in the prediction of rheumatoid arthritis development. *Rheumatology*. 2018 04;57:1243–1252.
- [8] van Steenberg HW, van Nies JA, Huizinga TW, Bloem JL, Reijnierse M, van der Helm-van Mil AH. Characterising arthralgia in the preclinical phase of rheumatoid arthritis using MRI. *Ann Rheum Dis*. 2015;74:1225–32.
- [9] van Steenberg HW, Mangnus L, Reijnierse M, Huizinga TW, van der Helm-van Mil AH. Clinical factors, anticitrullinated peptide antibodies and MRI-detected subclinical inflammation in relation to progression from clinically suspect arthralgia to arthritis. *Ann Rheum Dis*. 2016;75:1824–1830.
- [10] Eshed I, Feist E, Althoff C, Backhaus M, Burmester G, Hamm B, et al. Early rheumatoid arthritis - do we really know what it means? Consistency and distribution of MRI findings according to different definitions for early rheumatoid arthritis. *Clinical Rheumatology*. 2011;30:551–555.
- [11] Wakefield RJ, O'Connor PJ, Conaghan PG, McGonagle D, Hensor EMA, Gibbon WW, et al. Finger tendon disease in untreated early rheumatoid arthritis: A comparison of ultrasound and magnetic resonance imaging. *Arthritis Care & Research*. 2007;57:1158–1164.
- [12] Navalho M, Resende C, Rodrigues A, Pereira da Silva J, Fonseca J, Campos J, et al. Bilateral Evaluation of the Hand and Wrist in Untreated Early Inflammatory Arthritis: A Comparative Study of Ultrasonography and Magnetic Resonance Imaging. *Journal of Rheumatology*. 2013;40:1282–1292.
- [13] Saran S, Bagarhatta M, Saigal R. Diagnostic Accuracy of Ultrasonography in Detection of Destructive Changes in Small Joints of Hands in Patients of Rheumatoid Arthritis: A Comparison with Magnetic Resonance Imaging. *Journal of The Association of Physicians of India*. 2016;64:26–30.
- [14] Broll M, Albrecht K, Tarner I, Müller-Ladner U, Strunk J. Sensitivity and specificity of ultrasonography and low-field magnetic resonance imaging for diagnosing arthritis. *Clinical and Experimental Rheumatology*. 2012 Jul;30:543–547.
- [15] Xu H, Zhang Y, Zhang H, Wang C, Mao P. Comparison of the clinical effectiveness of US grading scoring system vs MRI in the diagnosis of early rheumatoid arthritis (RA). *Journal of Orthopaedic Surgery and Research*. 2017 Oct;12:152.
- [16] D'Agostino M, Terslev L, Aegerter P, Backhaus M, Balint P, Bruyn G, et al. Scoring ultrasound synovitis in rheumatoid arthritis: a EULAR-OMERACT ultrasound taskforce-Part 1: definition and development of a standardised, consensus-based scoring system. *RMD open*. 2017 Jul;11:e000428.
- [17] Nieuwenhuis WP, van Steenberg HW, Mangnus L, Newsom EC, Bloem JL, Huizinga TWJ, et al. Evaluation of the diagnostic accuracy of hand and foot MRI for early Rheumatoid Arthritis. *Rheumatology (Oxford)*. 2017;56:1367–1377.
- [18] Ostergaard M, Edmonds J, McQueen F, Peterfy C, Lassere M, Ejbjerg B, et al. An introduction to the EULAR-OMERACT rheumatoid arthritis MRI reference image atlas. *Ann Rheum Dis*. 2005;64:i3–7.
- [19] Haavardsholm EA, Ostergaard M, Ejbjerg BJ, Kvan NP, Kvien TK. Introduction of a novel magnetic resonance imaging tenosynovitis score for rheumatoid arthritis: reliability in a multireader longitudinal study. *Ann Rheum Dis*. 2007;66:1216–20.
- [20] Szkudlarek M, Court-Payen M, Jacobsen S, Klarlund M, Thomsen HS, Ostergaard M. Interobserver agreement in ultrasonography of the finger and toe joints in rheumatoid arthritis. *Arthritis & Rheumatism*. 2003;48:955–962.
- [21] Scheel AK, Hermann KGA, Kahler E, Pasewaldt D, Fritz J, Hamm B, et al. A novel ultrasonographic synovitis scoring system suitable for analyzing finger joint inflammation in rheumatoid arthritis. *Arthritis & Rheumatism*. 2005;52:733–743.
- [22] Naredo E, D'Agostino MA, Wakefield RJ, Möller I, Balint PV, Filippucci E, et al. Reliability of a consensus-based ultrasound score for tenosynovitis in rheumatoid arthritis. *Annals of the Rheumatic Diseases*. 2013;72:1328–1334.
- [23] Boer AC, Burgers LE, Mangnus L, ten Brinck RM, Nieuwenhuis WP, van Steenberg HW, et al. Using a reference when defining an abnormal MRI reduces false-positive MRI results—a longitudinal study in two cohorts at risk for rheumatoid arthritis. *Rheumatology*. 2017;56:1700–1706.
- [24] Padovano I, Costantino F, Breban M, D'Agostino MA. Prevalence of ultrasound synovial inflammatory findings in healthy subjects. *Annals of the Rheumatic Diseases*. 2016;75:1819–1823.
- [25] Nieuwenhuis WP, Krabben A, Stomp W, Huizinga TWJ, van der Heijde D, Bloem JL, et al. Evaluation of Magnetic Resonance Imaging-Detected Tenosynovitis

- in the Hand and Wrist in Early Arthritis. *Arthritis & Rheumatology*. 2015;67:869–876.
- [26] Takase-Minegishi K, Horita N, Kobayashi K, Yoshimi R, Kirino Y, Ohno S, et al. Diagnostic test accuracy of ultrasound for synovitis in rheumatoid arthritis: systematic review and meta-analysis. *Rheumatology*. 2017;57:49–58.
- [27] Witt MN, Mueller F, Weinert P, Nigg AP, Reindl CS, Proft F, et al. Ultrasound of Synovitis in Rheumatoid Arthritis: Advantages of the Dorsal over the Palmar Approach to Finger Joints. *The Journal of Rheumatology*. 2014;41:422–428.

Supplementary data

Supplementary methods are available at *Arthritis Research & Therapy Online*.

Supplementary tables

Table 4.4: Different Grey-scale ultrasound scoring methods

	GS score for joint effusion[1]	Szkudlarek GS synovitis score[1]	Modified Szkudlarek GS synovitis score[2]	EULAR-OMERACT GS synovitis score[3]
Grade 0	No effusion	No synovial thickening	No synovial hypertrophy or effusion	No synovial hypertrophy, regardless of presence of effusion
Grade 1	Minimal amount of fluid	Minimal synovial thickening: filling the angle between the peri-articular bones, without bulging over the line, linking tops of the bones	Minimal effusion and/or hypertrophy: filling the angle between the peri-articular bones, without bulging over the line, linking tops of the bones	Synovial hypertrophy with or without effusion: up to level of horizontal line that connects bone surfaces
Grade 2	Moderate amount of fluid, without distension of the joint capsule	Synovial thickening: bulging over the line linking tops of the peri-articular bones but without extension along the bone diaphysis	Moderate effusion and/or hypertrophy: bulging over the line linking tops of the peri-articular bones but without extension along the bone diaphysis	Synovial hypertrophy with or without effusion: extending beyond joint line but with upper surface convex or hypertrophy; extending beyond joint line but with upper surface flat
Grade 3	Extensive amount of fluid, with distension of the joint capsule	Synovial thickening: bulging over the line linking tops of the periarticular bones and with extension to at least one of the bone diaphyses	Extensive effusion and/or hypertrophy: bulging over the line linking tops of the periarticular bones and with extension to at least one of the bone diaphyses	Synovial hypertrophy: with or without effusion extending beyond joint line but with upper surface flat or convex

Table 4.5: Baseline characteristics of 70 patients studied

	IA patients (n=30)	CSA patients (n=40)
Age, mean (SD)	57 (16)	45 (11)
Female, n (%)	15 (50)	28 (70)
68-Tender joint count, median (IQR)	5 (2-7)	5 (3-10)
66-Swollen joint count, median (IQR)	2 (1-6)	-
CRP (mg/L), median (IQR)	8 (3-18)	3 (3-7)
RF positive (≥ 3.5 IU/mL), n (%)	7 (23)	13 (33)
ACPA positive (≥ 7 U/mL), n (%)	7 (23)	9 (23)
Either RF or ACPA positive, n (%)	8 (27)	14 (35)

IA, inflammatory arthritis; CSA, clinically suspect arthralgia; ACPA, anti-citrullinated peptide antibody (anti-CCP2, EliA CCP, Phadia, the Netherlands, positive if ≥ 7 U/mL); RF, immunoglobulin M-rheumatoid factor (RF) (positive if ≥ 3.5 IU/mL); CRP, c-reactive protein (positive if ≥ 5 mg/L); SD, standard deviation; IQR, Inter quartile range.

Table 4.6: Correlation coefficients of US versus MRI for the different locations

	MRI vs GSUS		MRI vs PDUS	
	Spearman's ρ	p-value	Spearman's ρ	p-value
<i>Synovitis</i>				
MCP joints	0.57	<0.001	0.64	<0.001
MTP joints	0.43	<0.001	0.53	<0.001
Wrist joints	0.22	0.002	0.40	<0.001
<i>Tenosynovitis</i>				
Flexor MCP tendons	0.62	<0.001	0.43	<0.001
Flexor Wrist tendons	0.46	<0.001	0.59	<0.001
Extensor Wrist tendons	0.54	<0.001	0.70	<0.001

Correlation coefficients of two different semi-quantitative scoring methods. Obtained values are therefore not representative of the exact concordance as scores of US and MRI have different requirements. GSUS-synovitis is according to EULAR-OMERACT definition.

Table 4.7: Test characteristics for ultrasound-detected synovitis and tenosynovitis with MRI as reference, cut-off for positivity for MRI based on healthy controls

	Sensitivity	Specificity	AUC	Sensitivity	Specificity	AUC
Synovitis	GS ≥ 1 (EULAR-OMERACT)			PD ≥ 1		
MCP joints	47 (27; 68)	94 (90; 96)	0.71	55 (34; 74)	90 (86; 93)	0.73
Wrist joints	52 (32; 72)	91 (86; 94)	0.71	64 (43; 80)	95 (90; 97)	0.79
MTP joints	72 (55; 84)	78 (73; 82)	0.75	38 (23; 55)	97 (94; 98)	0.67
Tenosynovitis	GS ≥ 1			PD ≥ 1		
Extensor wrist tendons	80 (63; 90)	79 (72; 84)	0.79	57 (39; 73)	96 (92; 98)	0.76
Flexor wrist tendons	50 (31; 69)	94 (90; 97)	0.72	42 (24; 61)	99 (97; 100)	0.71
Flexor MCP tendons	54 (35; 71)	80 (75; 85)	0.67	19 (9; 38)	98 (95; 99)	0.59

Test characteristics are shown in percentages with a 95% CI except for the AUC, area under the receiver operating characteristic curve; GS: Grey-scale Ultrasound; PD: Power Doppler.

Table 4.8: Test characteristics for US-detected synovitis and tenosynovitis with MRI as reference for CSA and IA separately

<i>IA-patients</i>	Sensitivity	Specificity	AUC	Sensitivity	Specificity	AUC
Synovitis	GS ≥ 1 (EULAR-OMERACT)			PD ≥ 1		
MCP joints	57 (41; 71)	95 (88; 98)	0.76	63 (48; 76)	97 (91; 99)	0.80
Wrist joints	36 (24; 50)	90 (77; 96)	0.63	36 (24; 50)	98 (87; 100)	0.67
MTP joints	87 (71; 95)	76 (67; 83)	0.82	42 (26; 59)	99 (95; 100)	0.71
Tenosynovitis	GS ≥ 1 (EULAR-OMERACT)			PD ≥ 1		
Extensor wrist tendons	82 (64; 92)	80 (69; 88)	0.82	64 (46; 79)	98 (91; 100)	0.81
Flexor wrist tendons	55 (35; 73)	88 (78; 94)	0.72	45 (27; 65)	99 (92; 100)	0.72
Flexor MCP tendons	84 (69; 92)	89 (81; 94)	0.87	22 (11; 37)	100 (96; 100)	0.61
<i>CSA-patients</i>	Sensitivity	Specificity	AUC	Sensitivity	Specificity	AUC
Synovitis	GS ≥ 1 (EULAR-OMERACT)			PD ≥ 1		
MCP joints	0 (0; 20)	100 (97; 100)	0.50	27 (11; 52)	97 (93; 99)	0.62
Wrist joints	13 (5; 32)	96 (90; 98)	0.55	17 (7; 37)	99 (94; 100)	0.58
MTP joints	46 (23; 71)	83 (77; 88)	0.65	38 (18; 64)	98 (95; 99)	0.68
Tenosynovitis	GS ≥ 1 (EULAR-OMERACT)			PD ≥ 1		
Extensor wrist tendons	50 (22; 78)	80 (72; 87)	0.65	38 (14; 69)	98 (94; 100)	0.68
Flexor wrist tendons	0 (0; 66)	97 (93; 99)	0.49	0 (0; 66)	100 (97; 100)	0.50
Flexor MCP tendons	50 (28; 72)	89 (83; 93)	0.69	13 (3; 36)	100 (97; 100)	0.56

Table 4.9: Test characteristics per joint for Grey-scale (EULAR-OMERACT definition) and power Doppler Ultrasound-detected synovitis with MRI as a reference

	Sensitivity	Specificity	AUC	Sensitivity	Specificity	AUC
Synovitis	GS ≥ 1 (EULAR-OMERACT)			PD ≥ 1		
<i>MCP joints</i>						
MCP 2	50 (29; 71)	100 (93; 100)	0.75	63 (41; 81)	96 (87; 99)	0.77
MCP 3	40 (20; 64)	96 (87; 99)	0.68	56 (33; 77)	96 (87; 99)	0.76
MCP 4	20 (6; 51)	97 (88; 99)	0.58	36 (15; 65)	97 (88; 99)	0.67
MCP 5	38 (14; 69)	100 (94; 100)	0.69	50 (24; 76)	100 (94; 100)	0.75
<i>Wrist joints</i>						
Radio-ulnar	16 (6; 38)	94 (84; 98)	0.55	25 (11; 47)	98 (90; 100)	0.62
Radio-carpal	38 (22; 57)	90 (78; 96)	0.65	30 (16; 48)	98 (88; 100)	0.64
Inter-carpal	28 (14; 48)	98 (88; 100)	0.63	35 (19; 54)	100 (92; 100)	0.67
<i>MTP joints</i>						
MTP 1	88 (64; 97)	62 (48; 74)	0.75	50 (28; 72)	98 (90; 100)	0.74
MTP 2	70 (40; 89)	66 (53; 77)	0.68	20 (6; 51)	100 (94; 100)	0.60
MTP 3	80 (38; 96)	82 (71; 90)	0.81	40 (12; 77)	100 (94; 100)	0.70
MTP 4	100 (51; 100)	93 (84; 97)	0.97	50 (15; 85)	100 (94; 100)	0.75
MTP 5	44 (19; 73)	95 (86; 98)	0.70	44 (19; 73)	95 (86; 98)	0.70

Table 4.10: Test characteristics per joint for Grey-scale and power Doppler Ultrasound-detected tenosynovitis with MRI as a reference

	Sensitivity	Specificity	AUC	Sensitivity	Specificity	AUC
Tenosynovitis	GS ≥ 1			Tenosynovitis PD ≥ 1		
<i>MCP flexor tendons</i>						
FD MCP 2	88 (64; 97)	89 (78; 95)	0.88	31 (14; 56)	100 (93; 100)	0.66
FD MCP 3	46 (23; 71)	95 (86; 98)	0.70	15 (4; 42)	100 (94; 100)	0.58
FD MCP 4	91 (62; 98)	93 (84; 97)	0.92	18 (5; 48)	100 (94; 100)	0.59
FD MCP 5	69 (42; 87)	79 (67; 88)	0.74	8 (1; 33)	100 (94; 100)	0.54
<i>Flexor wrist tendons</i>						
FDS/FDP	17 (3; 56)	100 (94; 100)	0.58	17 (3; 56)	100 (94; 100)	0.58
FPL	71 (36; 92)	94 (85; 98)	0.83	29 (8; 64)	100 (94; 100)	0.64
FCR	55 (28; 79)	88 (77; 94)	0.71	64 (35; 85)	98 (91; 100)	0.81
<i>Extensor wrist tendons</i>						
ECR	78 (45; 94)	78 (66; 87)	0.78	44 (19; 73)	100 (94; 100)	0.72
EDC/IP	70 (40; 89)	83 (72; 91)	0.77	50 (24; 76)	100 (94; 100)	0.75
ECU	76 (53; 90)	79 (67; 88)	0.78	71 (47; 87)	94 (85; 98)	0.82

Test characteristics are shown in percentages with a 95% CI except for the AUC, area under the receiver operating characteristic curve.

GS: Grey-scale; PD: Power Doppler; Extensor carpi radialis longus et brevis: ECR; Extensor digitorum communis and indices proprius: EDC/IP; Extensor carpi ulnaris: ECU; Flexor carpi radialis: FCR; Flexor pollicis longus: FPL; Flexor digitorum superficialis and profundus: FDS/FDP; flexor digitorum (FD) tendons 2-5 on the MCP-level.

Table 4.11: Grey-scale Ultrasound detected synovitis according to EULAR-OMERACT definition versus Szkudlarek on MCP joint level

MCP 2		GS according to Szkudlarek			
GS according to EULAR-OMERACT	0	31	24	5	0
	1	0	3	5	0
	2	0	0	0	1
	3	0	0	0	0

MCP 3		GS according to Szkudlarek			
GS according to EULAR-OMERACT	0	40	17	4	0
	1	0	2	1	1
	2	0	0	2	2
	3	0	0	0	0

MCP 4		GS according to Szkudlarek			
GS according to EULAR-OMERACT	0	50	14	1	0
	1	1	0	1	0
	2	0	0	1	1
	3	0	0	0	0

MCP 5		GS according to Szkudlarek			
GS according to EULAR-OMERACT	0	49	13	3	0
	1	0	1	1	0
	2	0	0	0	2
	3	0	0	0	0

Number of patients for each joint score according to Szkudlarek versus the EULAR/OMERACT revised score. Total number of patients was 70, but rarely a score was missing. GS: Grey-scale.

Table 4.12: Grey-scale Ultrasound detected synovitis (according to EULAR-OMERACT definition) versus Grey-scale Ultrasound detected synovitis (according to Szkudlarek) on wrist joint level

Radio-Ulnar		GS according to Szkudlarek			
GS according to EULAR-OMERACT	0	53	10	0	0
	1	0	3	1	0
	2	0	0	2	0
	3	0	0	0	0
Radio-Carpal		GS according to Szkudlarek			
GS according to EULAR-OMERACT	0	21	28	6	0
	1	0	5	7	0
	2	0	0	1	0
	3	0	0	0	1
Inter-Carpal		GS according to Szkudlarek			
GS according to EULAR-OMERACT	0	45	14	2	0
	1	0	1	4	1
	2	0	0	0	2
	3	0	0	0	0

Table 4.13: Grey-scale Ultrasound detected synovitis according to EULAR-OMERACT definition versus Szkudlarek on MTP joint level

MTP 1		GS according to Szkudlarek			
		0	1	2	3
GS according to EULAR-OMERACT	0	18	16	0	0
	1	0	18	7	0
	2	0	0	8	0
	3	0	0	0	0

MTP 2		GS according to Szkudlarek			
		0	1	2	3
GS according to EULAR-OMERACT	0	12	28	1	0
	1	0	13	9	1
	2	0	0	2	1
	3	0	0	0	0

MTP 3		GS according to Szkudlarek			
		0	1	2	3
GS according to EULAR-OMERACT	0	32	20	0	0
	1	0	8	6	1
	2	0	0	0	0
	3	0	0	0	0

MTP 4		GS according to Szkudlarek			
		0	1	2	3
GS according to EULAR-OMERACT	0	45	11	2	0
	1	0	2	5	0
	2	0	0	1	0
	3	0	0	0	0

MTP 5		GS according to Szkudlarek			
		0	1	2	3
GS according to EULAR-OMERACT	0	49	8	3	0
	1	0	2	4	1
	2	0	0	0	0
	3	0	0	0	0

