



Universiteit  
Leiden  
The Netherlands

## **Clinically suspect arthralgia and early rheumatoid arthritis: advances in imaging and impact on daily life**

Boer, A.C.

### **Citation**

Boer, A. C. (2020, June 9). *Clinically suspect arthralgia and early rheumatoid arthritis: advances in imaging and impact on daily life*. Retrieved from <https://hdl.handle.net/1887/97600>

Version: Publisher's Version

License: [Licence agreement concerning inclusion of doctoral thesis in the Institutional Repository of the University of Leiden](#)

Downloaded from: <https://hdl.handle.net/1887/97600>

**Note:** To cite this publication please use the final published version (if applicable).

Cover Page



Universiteit Leiden



The handle <http://hdl.handle.net/1887/97600> holds various files of this Leiden University dissertation.

**Author:** Boer, A.C.

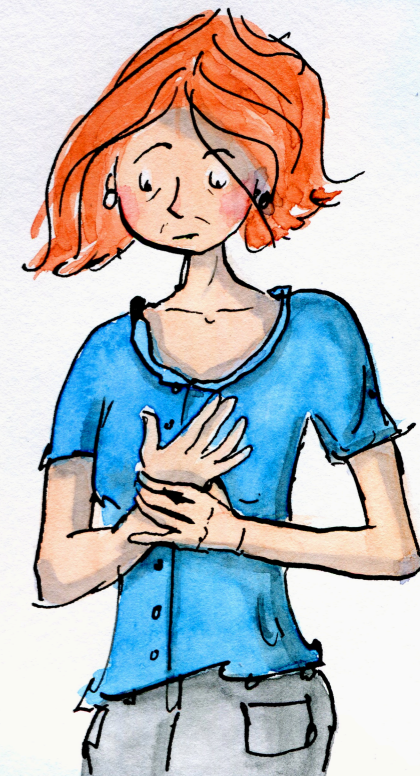
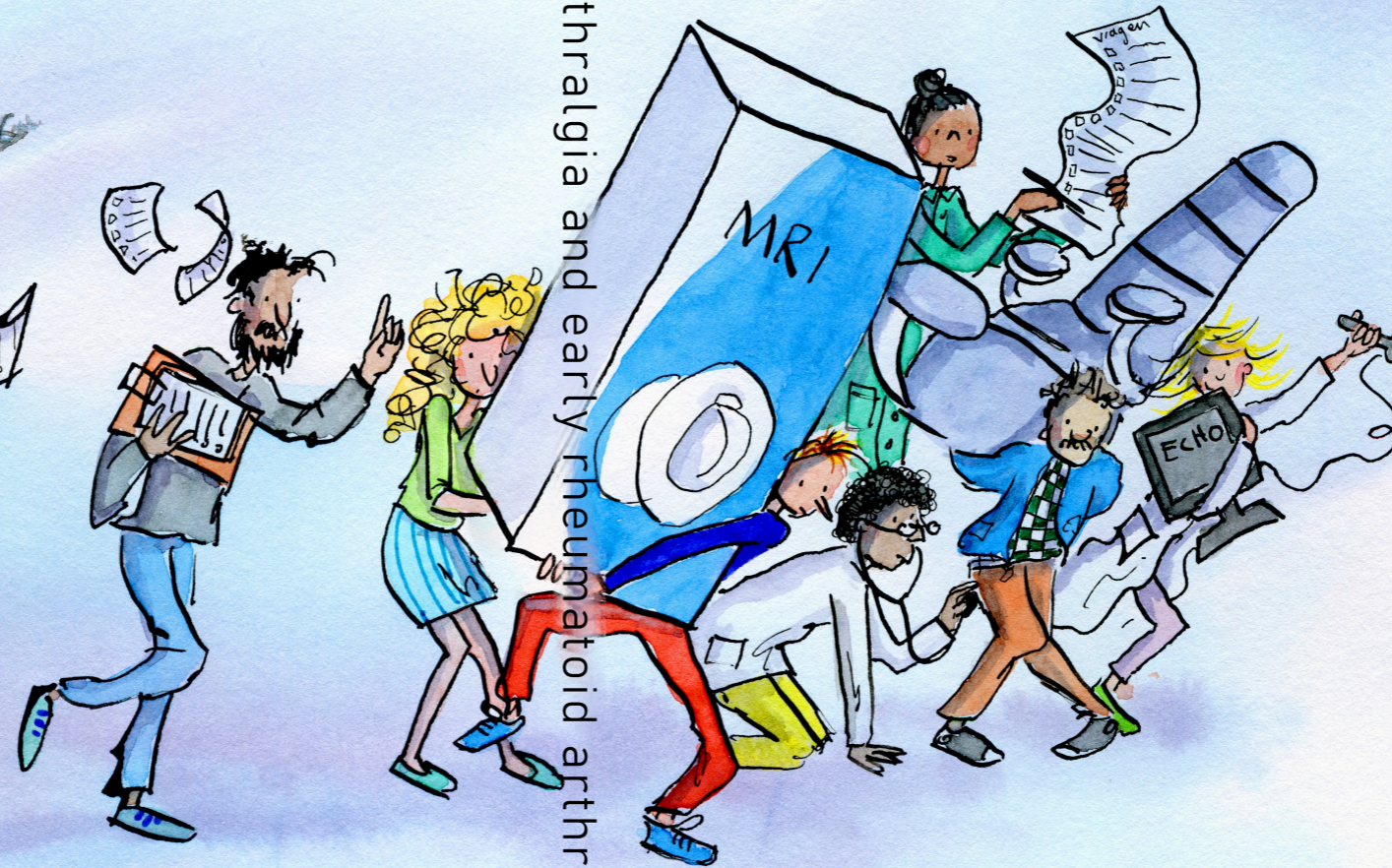
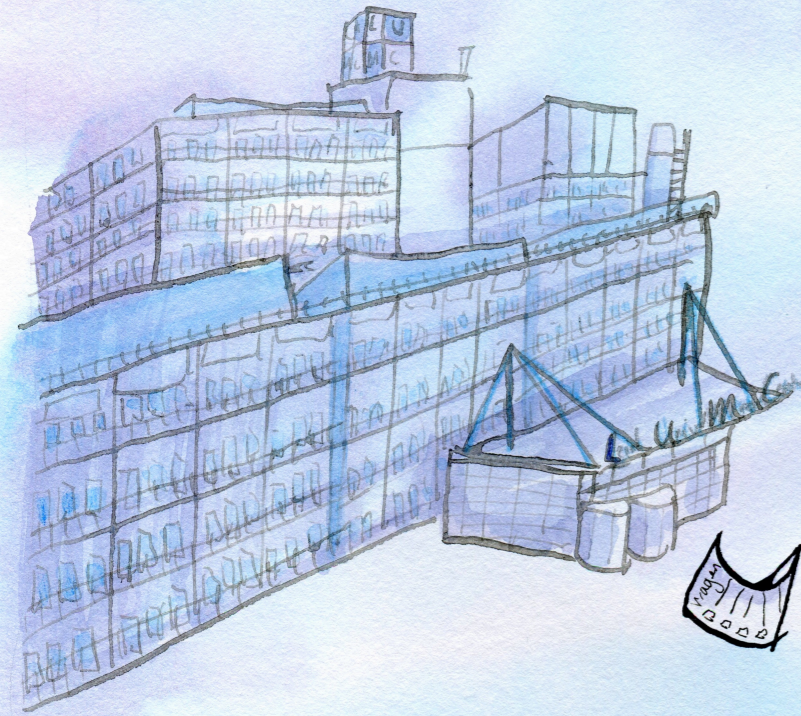
**Title:** Clinically suspect arthralgia and early rheumatoid arthritis : advances in imaging and impact on daily life

**Issue Date:** 2020-06-09

# Clinically suspect arthralgia and early rheumatoid arthritis

Advances in imaging and impact on daily life

Clinically suspect arthralgia and early rheumatoid arthritis A.C. Boer



Aleid Christine Boer