



Universiteit
Leiden
The Netherlands

Targeting intraplaque angiogenesis : imaging and therapeutic interventions

Baganha Carreiras, F.

Citation

Baganha Carreiras, F. (2020, May 28). *Targeting intraplaque angiogenesis : imaging and therapeutic interventions*. Retrieved from <https://hdl.handle.net/1887/92293>

Version: Publisher's Version

License: [Licence agreement concerning inclusion of doctoral thesis in the Institutional Repository of the University of Leiden](#)

Downloaded from: <https://hdl.handle.net/1887/92293>

Note: To cite this publication please use the final published version (if applicable).

Cover Page



Universiteit Leiden



The handle <http://hdl.handle.net/1887/92293> holds various files of this Leiden University dissertation.

Author: Baganha Carreiras, F.

Title: Targeting intraplaque angiogenesis : imaging and therapeutic interventions

Issue Date: 2020-05-28



Chapter 1.

General Introduction and Outline of the Thesis

ATHEROSCLEROSIS

Atherosclerosis, which is chronic inflammatory lipid-drive disease, consists of the build-up of a plaque (starting in the inner layer) of medium and large arteries that compromises blood flow. The formation of these lesions is a slow multifactorial process and in general remains asymptomatic for decades.¹ Narrowing of the arterial lumen, which initially can be compensated by small wall enlargements with no change in the lumen caliber, becomes more severe after decades of living.² When symptoms arise, they usually relate to chronic ischemia, by critical narrowing of the lumen (>75%), or, more often, to acute ischemia in the form of plaque rupture or erosion and subsequent thrombosis.

Clinical manifestations, depend on the organ and/or artery affected.³ When an atherosclerotic plaque progresses in the coronary arteries affecting heart's own circulation, it can cause chronic ischemia, such as stable angina pectoris, but also acute events such as myocardial infarction.⁴ Plaque progression, in the carotid artery can lead to acute ischemic stroke, and in the peripheral arteries, it⁵ can jeopardize limb viability.⁶

Cardiovascular diseases (CVD) include all heart and blood vessel diseases and despite the improved treatment, acute arterial ischemia is the major cause of mortality worldwide.⁷ In most CVD, the main underlying pathology is atherosclerosis.⁴ Therefore, it is important to understand the processes involved and identify new therapeutic targets to prevent the initiation, growth and rupture of an atherosclerotic plaque.

PLAQUE FORMATION

Dysfunctional changes in the endothelium induced by disturbed shear stress and the cumulative exposure to oxLDL over the years leads to endothelial cell (EC) activation.^{2, 3} Activated ECs upregulate the expression of several adhesion molecules, such as ICAM-1, VCAM-1 and selectins, promoting leukocytes arrestment and adherence to the endothelium. These leukocytes subsequently migrate through the EC junctions by combined actions of PECAM-1 and chemokines produced in the intima.^{7, 8} These infiltrated inflammatory leukocytes increase in number by local proliferation.^{9, 10}

OxLDL, which can no longer be recognized by LDL receptors (LDLRs)¹¹, is taken up by macrophage scavenger receptors, thereby inducing foam cell differentiation, a hallmark in early atherosclerotic lesions.¹² Moreover, oxLDL particles also induce inflammation by furnish neo-epitopes that stimulate humoral and adaptive immunity.^{13, 14} For instance, phosphorylcholine (PC) epitopes, which mediate the binding of oxLDL to scavenger receptors¹⁵, are recognized as damage associated molecular patterns (DAMPs)¹⁶, trigger complex immunoinflammatory responses, induce toxic oxidative stress, apoptosis, EC activation¹⁷ and dysfunction¹⁸.

Elevated LDL cholesterol levels can be reduced by statins and PCSK9 inhibitors. Both effectively control LDL cholesterol and reduce major adverse cardiovascular events (by $\approx 50\%$).¹ However, other risk factors, such as hypertension and insulin resistance, can also promote inflammation and/or aggravate atherosclerosis. Angiotensin II is implicated in hypertension pathogenesis, and activate nuclear factor- κ B (NF- κ B) pathway.¹⁹ Insulin resistance, the underlying cause of type 2 diabetes mellitus, is associated with elevated levels of C reactive protein, plasminogen activator inhibitor-1, and fibrinogen.²⁰ These extravascular sites of

inflammation can affect distant artery walls, by releasing soluble inflammatory mediators such as cytokines.²¹

Atherosclerosis is also early accompanied by the migration of VSMCs from the media to the intima.^{22, 23} Intimal VSMCs are considered to be the most important source of extracellular matrix (ECM) components, such as collagen, elastin, proteoglycans and glycosaminoglycans.^{22, 23} These proteins can entrap lipoproteins within the intima,²⁴ undergo modifications, and thereby trigger inflammation. Until recently, most researchers considered monocyte-derived macrophages the only precursors of foam cells. However, oxLDL by binding to intimal proteoglycans, forms aggregates that are cleared by the LDLR-related receptors in VSMCs. VSMCs, like macrophages, become engorged with lipids, contribute to lesion growth.²⁵

PLAQUE GROWTH AND PLAQUE INSTABILITY

An environment rich in growth factors and cytokines can trigger arterial wall remodeling. Proteases, such as MMPs, plasmin, cathepsin can degrade the ECM and stimulate the migration of VSMCs.²⁶⁻²⁹ As VSMCs migrate from the media to the intima, they can lose their contractility, differentiating into a proliferative and secretory phenotype that can contribute to vascular wall thickening which on its turn can result in gradual loss of luminal patency.³⁰ ECM degradation products can act as endogenous ligands for toll-like receptors (TLRs), thereby driving inflammatory responses, such as the invasion of T cells, NK cells, and mast cells.³¹ Inflammation and excessive protease activity can promote cellular apoptosis. Macrophages and VSMC, undergo in particular due to oxLDL uptake, programmed cell death being the basis of the necrotic core formation of the advance plaques.^{32,}

³³ However, advanced atherosclerotic plaques do not necessarily lead to clinical events. Plaques, with limited lipid accumulation and thicker fibrous caps can remain stable for years. but they may also in time, or eventually, become unstable.

Unstable plaques are characterized by necrotic core expansion, increased cholesterol content, calcifications, and ECM remodeling. ECM remodeling and VSMCs apoptosis decrease collagen synthesis, affecting VSMCs ability to maintain the skeleton of the fibrous cap.^{34, 35}

Concomitantly, severe stenosis compromises oxygen diffusion (from vasa vasorum (VV) and lumen) and active inflammatory cells increase oxygen consumption, aggravating hypoxia.³⁶⁻³⁸ A hypoxic large necrotic core drives strong changes in the plaque, such as intraplaque angiogenesis (IPA) and successively intraplaque hemorrhage (IPH), both frequently observed features of unstable plaques. Plaque rupture exposes thrombogenic material in the plaque core the ultimate and most dreaded complication of atherosclerosis.

INTRAPLAQUE ANGIOGENESIS AND INTRAPLAQUE HEMORRHAGE

Although angiogenesis arises as a natural physiological response to the increased oxygen demand in the necrotic core, IPA is a major plaque instability factor due to the active and immature nature of the neovessels.

During hypoxia, hypoxia-inducible transcription factors (HIF)-1 α , HIF-2 α and HIF-1 β heterodimerize, triggering the expression of genes containing hypoxia-responsive elements, such as the vascular endothelial growth factor (VEGF). Activation of the VEGF receptor 2 (VEGFR2) in a quiescent vascular network, induces microvessel disturbance and EC sprouting.^{39, 40} Through a VEGF gradient,

ECs proliferate and migrate towards the intima, **as extensively discussed in chapter 2.**

Also, during hypoxia, ANGPT2 is released from storage granules called Weibel-Palade bodies, antagonizing ANGPT1-Tie2 downstream signaling in ECs and in pericytes.^{41, 42} ANGPT1 and ANGPT2, are highly homologous but exert different effects on the Tie2 receptor.^{41, 43} ANGPT1, continuously secreted by mural cells, is a canonical agonist of Tie2 receptor, promoting vessel maturation by stimulating pericytes recruitment^{44, 45} and junctional accumulation.^{46, 47} ANGPT2 destabilizes the vasculature to potentiate the angiogenesis triggered by VEGFA⁴⁸, inducing junction internalization between ECs and pericytes.^{49, 50} Microvessel growth is tightly controlled under physiological conditions, however, when the balance between pro- and anti-angiogenic molecules balances toward angiogenic inducers, neovessels maturation is strongly compromised.⁵¹⁻⁵³

Neovessel maturation, which comprehends the structural integrity and composition of the endothelium, basement membrane and pericyte coverage, is a determining factor in the regulation of vascular permeability. Ruptured atherosclerotic plaques often present extended angiogenic microvasculature with poor pericyte coverage and lack of several junctions with a low ANGPT1/ANGPT2 ratio.⁵⁴

Moreover, immature microvessels haven been co-localized with the presence of extravasated erythrocytes, constituting the main source of IPH.^{55, 56} Erythrocytes trapped in the plaque tend to lyse delivering a potent combination hemoglobin (Hb), iron, phospholipids membranes and free cholesterol.⁵⁷

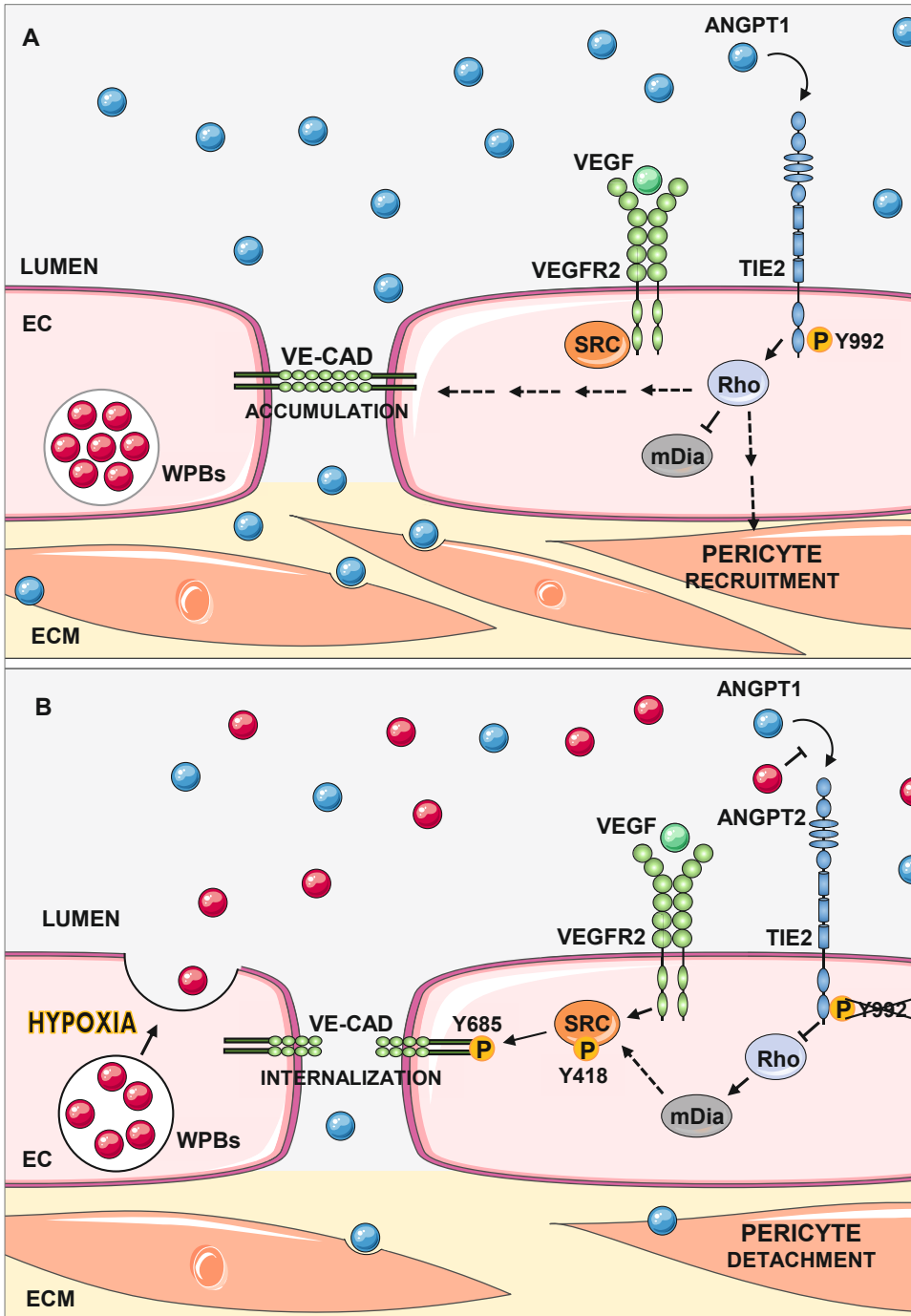


Figure 1. Graphical representation of the Angiopoietin-Tie2 axis. (a) Expression of the receptor Tie2 is heavily enriched in the endothelium. Tie2 is activated by ANGPT1 which

is secreted by platelets and peri-endothelial cells. Activation of Tie2 receptor, culminates in recruitment of pericytes and junctional accumulation between ECs. **(b)** ANGPT2 is almost exclusively expressed by EC and thereby acts as dynamic autocrine modulator of ANGPT1/Tie2 signaling. In the context of hypoxia (or even inflammation), ANGPT2 stored in Weibel–Palade bodies (WPBs) is released and antagonizes ANGPT1, inducing vascular leakage by VE-Cadherin (VE-CAD) junctional internalization.

Hb binds to haptoglobin (Hp) creating hemoglobin:haptoglobin (Hb:Hp) complexes. Intake of hemoglobin by the hemoglobin-haptoglobin receptor CD163 leads to a distinct alternative non-foam cell anti-inflammatory macrophage phenotype, previously considered atheroprotective.^{58, 59}

Guo, Akahori, et al. showed that CD163⁺ macrophages (M(CD163⁺)) are abundantly present in human atherosclerotic plaques, mainly near the neovascularized, VEGF-positive hemorrhagic areas.⁵⁸ Genetic analysis of cardiovascular disease patient cohorts revealed an association between a polymorphism that increases CD163 expression and plaque rupture and plaque angiogenesis (independently of traditional cardiovascular risk factors). Furthermore, these authors also showed that Hb:Hp uptake by macrophages increases iron export. M(CD163⁺) intracellular iron deprivation inhibits PHD2 activity, inducing of HIF1 α activation. Consequently, CD163⁺ macrophages secrete VEGF-A, promoting angiogenesis, vascular permeability and VCAM-1 endothelial expression that enhances inflammatory response.⁶⁰

Additionally, iron is also strong lipid oxidizer, and extravasated erythrocytes increase plaque lipid content by accumulation of free cholesterol and phospholipidic membranes.^{57, 61} In combination with the impaired mechanisms regulating the clearance of debris and apoptotic cell in advance plaques, IPH drives necrotic core expansion by feeding a vicious cycle of IPA and inflammation.^{62, 63.}

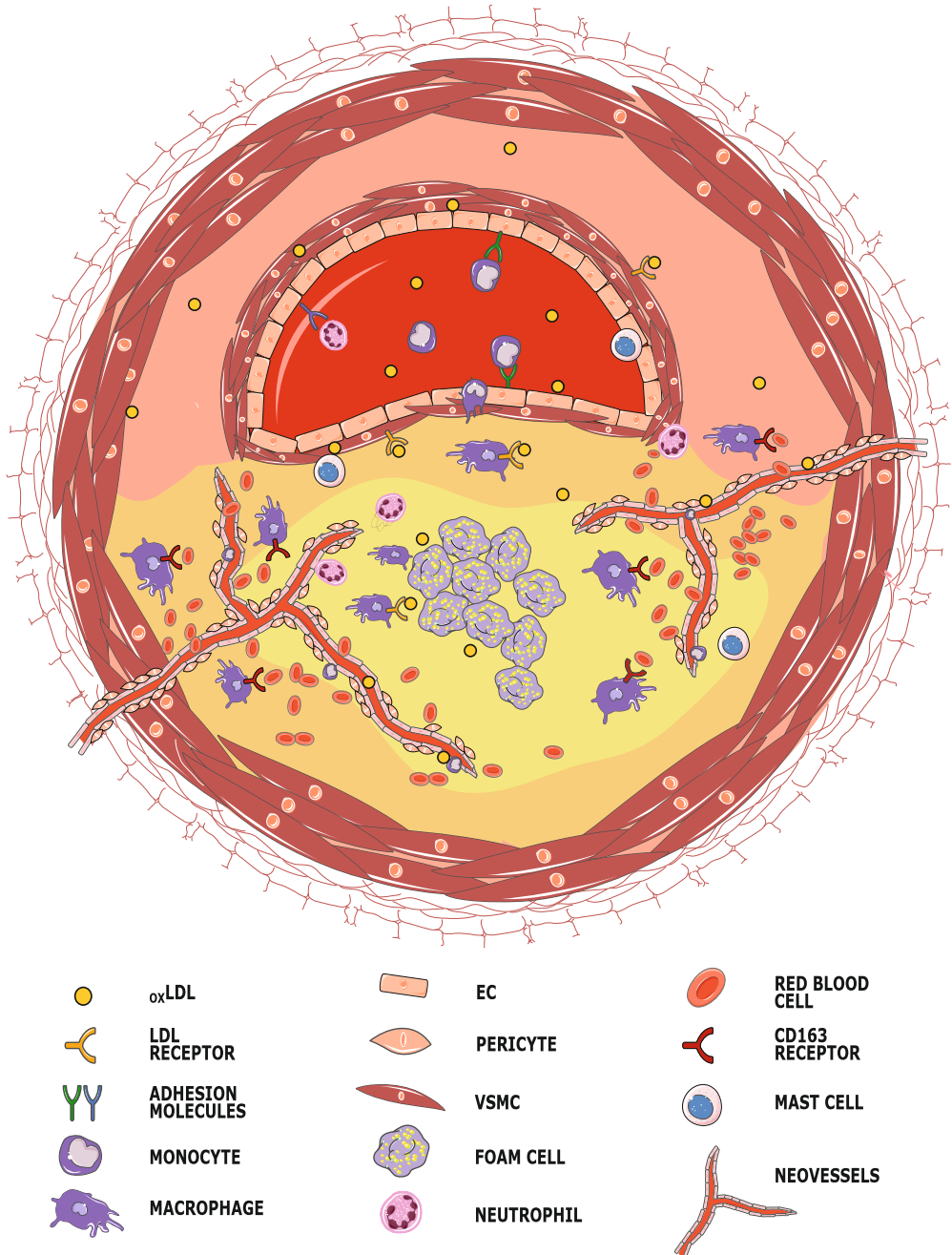


Figure 2. Plaque angiogenesis. Once in the plaque macrophages engulf oxLDL and become lipid filled foam cells. Their accumulation activates cytokine production that promotes the influx of neutrophils, mast cells and monocytes. The high oxygen consumption of these inflammatory cells leads to hypoxia. HIF-1 α and VEGF, together with an unbalanced

presence of the destabilizing factor Ang2 bound to its receptor Tie2, trigger the formation of leaky neovessels. (Magnification) Intraplaque hemorrhage, with extravasation of red blood cells and inflammatory cells, is due to immature neovessels, lacking proper enveloping pericytes and poor tight junctions between endothelial cells. Macrophages phagocytize extravasated red blood cells.

VEIN GRAFT FAILURE

Vein graft (VG) surgery is part of the standard revascularization strategies for patients with coronary and peripheral artery diseases and more than two million surgeries are performed worldwide annually.^{64, 65} VG surgery can markedly improve survival and symptoms in selected patients, however within in one month after surgery, 10% of the VGs fail due to acute thrombosis. After one year, 15% of the VG occlude due to pathological intimal thickening. By 10 years after surgery, only 60% of VG are still patent, pointing out that VG failure (VGF) is a serious clinical problem.⁶⁶⁻⁶⁸ VGF results from complex pathophysiological processes that lead to a partial or complete occlusion of the graft. The progression of VGF over time involves vascular wall remodeling and inflammation as central processes throughout all distinct phases, **as extensively discuss in the chapter 5.**

Vessel narrowing, unstable atherosclerotic lesions and subsequent plaque rupture are the main causes of late VGF.^{67, 69} Although the start of the lesion deviates as well as some morphological differences, there is a marked resemblance between vein graft accelerated atherosclerosis and native atherosclerotic lesions. Therefore, VG surgery in a preclinical model mouse model has been used to study instability features of advance atherosclerosis lesion, such as intraplaque angiogenesis and intraplaque hemorrhage, as will be discussed in the next section.

MODELS FOR ADVANCED ATHEROSCLEROSIS

The use of animal models for accelerated atherosclerosis is essential to understand the pathophysiological mechanisms behind plaque rupture since it is a systemic process with multiple organs and tissues involved; and is of importance to study the potential of (new) treatments for plaque instability.

Mice have a different lipid profile compared to humans (most of the cholesterol is transported in HDL instead of the atherogenic LDL and VLDL), making them relatively resistant to atherosclerosis. However, due to their fast reproduction, easy genetic manipulation, and introduction of modifying diets (such as hypercholesterolemic and high-fat) and additional atherosclerosis risk factors (such as diabetes), mice became prevalent in experimental atherosclerosis.^{70, 71}

APOE AND LDLR KO MICE

ApoE KO mice and LDLR KO mice, the most common used models for atherosclerosis,⁷² result from the genetic deletion of LDLR (that withdraws LDL from the blood) and ApoE (a ligand for the LDLR on LDL and VLDL).⁷⁰ Such deficiencies result in increased cholesterol plasma levels, driving the formation of spontaneous atherosclerosis in regions of low and/or oscillatory shear stress.⁷³ Furthermore, hypercholesteremic and high-fat diets further increase cholesterol plasma levels, resulting in a faster and more advanced atherogenic phenotype.⁷⁴ However, LDLR and ApoE are crucial proteins in LDL clearance, and due to their absence, established human lipid-lowering drugs such as statins, fail to lower cholesterol plasma levels in ApoE KO mice.

APOE3*LEIDEN MICE

ApoE3*Leiden mice are a transgenic strain generated using a genomic 27-kilobase DNA construct (containing the ApoE gene, ApoC1 gene and all regulatory elements) found in a large Dutch family with a genetic form of hyperlipidemia.⁷⁵ ⁷⁶ Due to the defective binding of the ApoE3*Leiden protein to the LDLR, mice have an impaired clearance of chylomicron and VLDL remnant lipoproteins.^{75, 76} As a consequence, ApoE3*Leiden mice are able to develop diet-dependent hyperlipidemia and are highly susceptible to diet-induced atherosclerosis. Contrary to ApoE and LDLR-KO mice, in which atherosclerosis is not diet dependent, ApoE3*Leiden mice allows titration of cholesterol plasma levels with different cholesterol content diets, **as discussed in chapter 4.**

Although ApoE3*Leiden mice are less prone to spontaneous atherosclerosis than ApoE KO, when fed with hypercholesterolemic diets, ApoE3*Leiden atherosclerotic lesion are similar to ApoE KO. Additionally, the ApoE3*Leiden lipoprotein profile resembles the human situation more closely.⁷⁷

Moreover, they have the ability to synthesize functional mouse ApoE, which is useful to study atherogenesis (as they offer a possibility to evaluate increased lipid levels effects without disturbing macrophage functions⁷⁸) but also LDL-lowering drugs (and pleiotropic) effects, **as discussed in chapter 4.** Also, ApoE*3 Leiden mice express ApoE in the liver and in macrophages, keeping them able to respond the statins (as discussed below in more detail), whereas in ApoE KO mice this does not occur. Therefore, the hypercholesterolemic ApoE3*Leiden is considered one of the atherosclerosis models closest to humans.^{79, 80}

Hypercholesterolemic APOE3*LEIDEN Vein Graft Model to study Intraplaque Angiogenesis and Intraplaque Hemorrhage

Because similarities were found between lesions in VG and atherosclerosis, a murine model of VG graft disease has been established. One of the most frequently used models for vein graft disease is the model described by Xu et al.⁸⁰

In this model, the caval vein of a donor mouse is interpositioned in the carotid artery of a receiver mouse. The carotid artery is dissected from its surrounding from the bifurcation at the distal end toward the proximal end. On both the proximal and distal artery end a nylon cuff is sleeved and fixated on the cuff-handles with hemostatic clamps. After dissecting the ligature from the distal artery end, the artery is everted over the cuff and this procedure is repeated on the proximal artery end. The caval vein is fixed over both the cuffs with ligatures. Pulsatile flow through the venous conduit confirms a successful procedure. Within 28 days after the surgery, a vein graft develops from a few cell layers at the start of the engraftment up to a massive thickened vessel wall. After surgery, the endothelial cell lining of the graft is severely damage due to handling and dilatation.

These VG procedure has been used in both, ApoE KO and ApoE3*Leiden mice, and their VG lesions presented typical histological features of late-stage atherosclerosis.⁸¹⁻⁸³ Hypercholesterolemic ApoE3*Leiden VG lesions, in particular, show severe VG thickening (up to 50 times the original), microcalcifications, cholesterol clefts, lipid-loaded foam cell accumulation dissections and erosion areas, 28 days after surgery.^{79, 81, 82, 84} Remarkably, these lesion present vasa vasorum derived neovascularization stimulated by hypoxia⁸⁴, with the unique presence leaky intimal neovessels and intraplaque hemorrhage.⁶² The majority of

plaque neovessels in VG have heterogeneous basement membrane and poor pericyte-coverage related to an ANGPT1/ANGPT2 unbalance.^{62, 84} Moreover, CD163 macrophages can be abundantly found throughout the vein graft lesion but mostly in close proximity of neovessels.⁶²

The fact that hypercholesterolemic ApoE3*Leiden VG lesions show a complete range of plaque destabilization features occurring within four weeks, emphasizes its advantages to study rupture-prone atherosclerotic plaques.

IMAGING OF INTRAPLAQUE ANGIOGENESIS

Imaging of vulnerable plaque features can represent a step forward in the detection of high-risk atherosclerotic patients. Significant investments have been made in the cardiovascular imaging field, and the most prominent human imaging technologies, such as PET, MRI and CT have shown to be crucial for detection of plaque angiogenesis, (**as discussed in Chapter 2**).³⁴ However, these clinical imaging techniques do not have sufficient resolution to image the detailed microvessel network in small-sized preclinical animal models, providing low benefit when it comes to the development of target-tracers and target-therapeutic approaches. Therefore, high-resolution hardware has emerged to visualize the microvasculature and explore cellular events in small size animals, *in vivo*.⁶⁰

Intravital microscopy (IVM), in particular, due to its high resolution provides unparalleled insights into dynamic molecular aspects of angiogenesis.^{85, 86} IVM was first described in the 19th century by Wagner, who applied brightfield microscopy to visualize leukocyte trafficking in translucent tissues of a frog.⁸⁷ Under visible light, intravascular leukocytes appeared colorless, and only cells

slowed by adhesive processes could be distinguished from rapidly flowing cells in the background.⁸⁸

Currently, it can be performed using several light microscopy techniques including widefield fluorescence, confocal, two-photon (2P), and others. The main considerations rely on the depth and/or detail needed to image the area of interest. If the area of interest is more than 50–100 μm depth, which is the case of plaque neovessels, two-photon (2P)-IVM is required.⁸⁹ Equipped with fluorescence-tracers and pulsed infrared two-photon laser, 2P-IVM allows visualization and quantification of microvessel permeability in real time.

2P-IVM differs from traditional fluorescence microscopy, in which the excitation wavelength is shorter than the emission wavelength, as the wavelengths of the two exciting photons are longer than the wavelength of the resulting emitted light.⁹⁰ 2P-IVM typically uses infrared light to minimize scattering. Together these effects increase the light penetration depth, with a good signal/background ratio until 500 μm deep.⁹⁰ Moreover, 2P-IVM pulsed approach decreases phototoxicity, allowing recurrent imaging over prolonged periods.⁸⁹ Remarkably, the development of imaging windows, allows long-term 2P-IVM to track single EC proliferation and migration in the same area in living animals, with need for recurrent surgeries.⁹¹

The usefulness of these techniques, however, can be adversely affected by limited possibilities of a unified standard of quantification software. Most manufacture software is aimed for general applications, lacking specific software tools for quantification of more detailed aims.

Nevertheless, 2P-IVM can be an interesting tool to study intraplaque leaky neovessels in murine advance atherosclerotic lesions, **as discussed in chapter**

3. Moreover, these techniques can potentially improve in preclinical assessment of antiangiogenic therapies.

OUTLINE OF THE THESIS

Despite the available treatment options and sophisticated imaging technologies for monitoring lesion development, the morbidity and mortality from acute cardiovascular events remain unacceptably high.

While cholesterol-lowering, anti-inflammatory and anti-platelet therapies benefits can increase survival as a primary or secondary prevention, they are not sufficient for plaque rupture prevention. Moreover, the most advance imaging technologies to detect high-risk atherosclerotic patients fail to visualize and explore cellular events in small preclinical models. Therefore, there is a clear need for the development of new therapies and the application of high-resolution imaging modalities.

In the current thesis, we evaluated new possibilities to inhibit and image intraplaque angiogenesis, as highlighted by the following scope:

In **Chapter 2**, we review the new insights of atherosclerotic neovascularization, including the effects of leaky neovessels on intraplaque hemorrhage, both in experimental animal models and humans. Moreover, we give an overview of therapeutic interventions targeting angiogenesis and *in vivo* imaging modalities used to study atherosclerosis.

In **Chapter 3**, we use 2P-IVM to visualize and study the architecture of adventitial and intimal plaque neovessels in murine advanced atherosclerotic vein graft lesions. Moreover, we report a 2P-IVM method to assess passive diffusion by

quantification of labeled-dextrans extravasation in healthy microvessels as well as plaque microvessels in real time.

In **Chapter 4**, we evaluate both, the lipid lowering-dependent and independent effects of atorvastatin on vein graft atherosclerosis, including intraplaque angiogenesis and intraplaque hemorrhage. We also present evidence of the pathophysiological and molecular mechanism of atorvastatin-mediated inhibition on neovascularization.

In **Chapter 5**, we review the pathophysiological mechanisms underlying the development of vein graft failure, emphasizing the role of immune response and associated factors related to VG remodeling and failure. Moreover, we discuss potential therapeutic options that can improve patency based on data from both preclinical studies and the latest clinical trials.

In **Chapter 6**, we describe the effect of a newly constructed humanized monoclonal antibody against phosphorylcholine PC (PCmAB) on accelerated atherosclerotic lesions in ApoE3*Leiden mice. PC is one of the main oxLDL epitopes and plays a central role in atherosclerosis, triggering complex immunoinflammatory responses, EC activation and dysfunction. We investigate the role of PCmAB on vascular remodeling, plaque stability, inflammation as well as on intraplaque angiogenesis and intraplaque hemorrhage. Additionally, we investigated the isolated effect of PCmAB in in vitro angiogenesis assays and CD163⁺ macrophage cultures.

In **Chapter 7**, a summarizing discussion of the different chapters and future perspectives, concludes this thesis.

REFERENCES

1. Ross R. The pathogenesis of atherosclerosis: a perspective for the 1990s. *Nature* 1993;**362**(6423):801-809.
2. Schreiner PJ, Jacobs DR, Jr., Wong ND, Kiefe CI. Twenty-Five Year Secular Trends in Lipids and Modifiable Risk Factors in a Population-Based Biracial Cohort: The Coronary Artery Risk Development in Young Adults (CARDIA) Study, 1985-2011. *Journal of the American Heart Association* 2016;**5**(7):e003384.
3. Ference BA, Ginsberg HN, Graham I, Ray KK, Packard CJ, Bruckert E, Hegele RA, Krauss RM, Raal FJ, Schunkert H, Watts GF, Borén J, Fazio S, Horton JD, Masana L, Nicholls SJ, Nordestgaard BG, van de Sluis B, Taskinen M-R, Tokgözoğlu L, Landmesser U, Laufs U, Wiklund O, Stock JK, Chapman MJ, Catapano AL. Low-density lipoproteins cause atherosclerotic cardiovascular disease. 1. Evidence from genetic, epidemiologic, and clinical studies. A consensus statement from the European Atherosclerosis Society Consensus Panel. *European heart journal* 2017;**38**(32):2459-2472.
4. Yahagi K, Kolodgie FD, Otsuka F, Finn AV, Davis HR, Joner M, Virmani R. Pathophysiology of native coronary, vein graft, and in-stent atherosclerosis. *Nature reviews. Cardiology* 2016;**13**(2):79-98.
5. Gimbrone MA, Jr., Garcia-Cardena G. Endothelial Cell Dysfunction and the Pathobiology of Atherosclerosis. *Circ Res* 2016;**118**(4):620-36.
6. Morley RL, Sharma A, Horsch AD, Hincliffe RJ. Peripheral artery disease. *BMJ (Clinical research ed.)* 2018;**360**:j5842-j5842.
7. Roth GA, Forouzanfar MH, Moran AE, Barber R, Nguyen G, Feigin VL, Naghavi M, Mensah GA, Murray CJL. Demographic and epidemiologic drivers of global cardiovascular mortality. *The New England journal of medicine* 2015;**372**(14):1333-1341.
8. van Buul JD, Hordijk PL. Signaling in leukocyte transendothelial migration. *Arterioscler Thromb Vasc Biol* 2004;**24**(5):824-33.
9. Rao RM, Yang L, Garcia-Cardena G, Lusinskas FW. Endothelial-dependent mechanisms of leukocyte recruitment to the vascular wall. *Circ Res* 2007;**101**(3):234-47.
10. Schimmel L, Heemskerk N, van Buul JD. Leukocyte transendothelial migration: A local affair. *Small GTPases* 2017;**8**(1):1-15.
11. Bird DA, Gillotte KL, Horkko S, Friedman P, Dennis EA, Witztum JL, Steinberg D. Receptors for oxidized low-density lipoprotein on elicited mouse peritoneal macrophages can recognize both the modified lipid moieties and the modified protein moieties: implications with respect to macrophage recognition of apoptotic cells. *Proc Natl Acad Sci U S A* 1999;**96**(11):6347-52.
12. Navab M, Ananthramaiah GM, Reddy ST, Van Lenten BJ, Ansell BJ, Fonarow GC, Vahabzadeh K, Hama S, Hough G, Kamranpour N, Berliner JA, Lusis AJ, Fogelman AM. The oxidation hypothesis of atherogenesis: the role of oxidized phospholipids and HDL. *Journal of lipid research* 2004;**45**(6):993-1007.
13. Ketelhuth DFJ, Hansson GK. Adaptive Response of T and B Cells in Atherosclerosis. *Circulation research* 2016;**118**(4):668-678.

14. Gisterå A, Hansson GK. The immunology of atherosclerosis. *Nature reviews. Nephrology* 2017;**13**(6):368-380.
15. Hörkkö S, Binder CJ, Shaw PX, Chang MK, Silverman G, Palinski W, Witztum JL. Immunological responses to oxidized LDL. *Free radical biology & medicine* 2000;**28**(12):1771-1779.
16. Miller YI, Choi SH, Wiesner P, Fang L, Harkewicz R, Hartvigsen K, Boullier A, Gonen A, Diehl CJ, Que X, Montano E, Shaw PX, Tsimikas S, Binder CJ, Witztum JL. Oxidation-specific epitopes are danger-associated molecular patterns recognized by pattern recognition receptors of innate immunity. *Circ Res* 2011;**108**(2):235-48.
17. Afonyushkin T, Oskolkova OV, Philippova M, Resink TJ, Erne P, Binder BR, Bochkov VN. Oxidized phospholipids regulate expression of ATF4 and VEGF in endothelial cells via NRF2-dependent mechanism: novel point of convergence between electrophilic and unfolded protein stress pathways. *Arterioscler Thromb Vasc Biol* 2010;**30**(5):1007-13.
18. Yan FX, Li HM, Li SX, He SH, Dai WP, Li Y, Wang TT, Shi MM, Yuan HX, Xu Z, Zhou JG, Ning DS, Mo ZW, Ou ZJ, Ou JS. The oxidized phospholipid POVPC impairs endothelial function and vasodilation via uncoupling endothelial nitric oxide synthase. *J Mol Cell Cardiol* 2017;**112**:40-48.
19. Kranzhöfer R, Browatzki M, Schmidt J, Kübler W. Angiotensin II activates the proinflammatory transcription factor nuclear factor-kappaB in human monocytes. *Biochemical and biophysical research communications* 1999;**257**(3):826-828.
20. Rocha VZ, Libby P. Obesity, inflammation, and atherosclerosis. *Nature reviews. Cardiology* 2009;**6**(6):399-409.
21. Libby P, Loscalzo J, Ridker PM, Farkouh ME, Hsue PY, Fuster V, Hasan AA, Amar S. Inflammation, Immunity, and Infection in Atherothrombosis: JACC Review Topic of the Week. *Journal of the American College of Cardiology* 2018;**72**(17):2071-2081.
22. Majesky MW. Developmental basis of vascular smooth muscle diversity. *Arteriosclerosis, thrombosis, and vascular biology* 2007;**27**(6):1248-1258.
23. Langley SR, Willeit K, Didangelos A, Matic LP, Skroblin P, Barallobre-Barreiro J, Lengquist M, Rungger G, Kapustin A, Kedenko L, Molenaar C, Lu R, Barwari T, Suna G, Yin X, Iglseider B, Paulweber B, Willeit P, Shalhoub J, Pasterkamp G, Davies AH, Monaco C, Hedin U, Shanahan CM, Willeit J, Kiechl S, Mayr M. Extracellular matrix proteomics identifies molecular signature of symptomatic carotid plaques. *The Journal of clinical investigation* 2017;**127**(4):1546-1560.
24. Chang MY, Potter-Perigo S, Tsoi C, Chait A, Wight TN. Oxidized low density lipoproteins regulate synthesis of monkey aortic smooth muscle cell proteoglycans that have enhanced native low density lipoprotein binding properties. *The Journal of biological chemistry* 2000;**275**(7):4766-4773.
25. Badimon L, Martínez-González J, Llorente-Cortés V, Rodríguez C, Padró T. Cell biology and lipoproteins in atherosclerosis. *Current molecular medicine* 2006;**6**(5):439-456.
26. Woodside KJ, Naoum JJ, Torry RJ, Xue XY, Burke AS, Levine L, Daller JA, Hunter GC. Altered expression of vascular endothelial growth factor and its receptors in normal saphenous vein and in arterialized and stenotic vein grafts. *Am J Surg* 2003;**186**(5):561-8.

27. Sterpetti AV, Cucina A, Lepidi S, Randone B, Stipa F, Aromatario C, Travi D, D'Angelo LS, Cavallaro A, Stipa S. Progression and regression of myointimal hyperplasia in experimental vein grafts depends on platelet-derived growth factor and basic fibroblastic growth factor production. *J Vasc Surg* 1996;**23**(4):568-75.
28. Friedl R, Li J, Schumacher B, Hanke H, Waltenberger J, Hannekum A, Stracke S. Intimal hyperplasia and expression of transforming growth factor-beta1 in saphenous veins and internal mammary arteries before coronary artery surgery. *Ann Thorac Surg* 2004;**78**(4):1312-8.
29. You WJ, Xiao MD, Yuan ZX. Significance of changes in transforming growth factor-beta mRNA levels in autogenous vein grafts. *Chin Med J (Engl)* 2004;**117**(7):1060-5.
30. Kalra M, Miller VM. Early remodeling of saphenous vein grafts: proliferation, migration and apoptosis of adventitial and medial cells occur simultaneously with changes in graft diameter and blood flow. *J Vasc Res* 2000;**37**(6):576-84.
31. Gistera A, Hansson GK. The immunology of atherosclerosis. *Nat Rev Nephrol* 2017;**13**(6):368-380.
32. Clarke MCH, Talib S, Figg NL, Bennett MR. Vascular smooth muscle cell apoptosis induces interleukin-1-directed inflammation: effects of hyperlipidemia-mediated inhibition of phagocytosis. *Circulation research* 2010;**106**(2):363-372.
33. Tabas I, García-Cardena G, Owens GK. Recent insights into the cellular biology of atherosclerosis. *The Journal of cell biology* 2015;**209**(1):13-22.
34. Parma L, Baganha F, Quax PHA, de Vries MR. Plaque angiogenesis and intraplaque hemorrhage in atherosclerosis. *Eur J Pharmacol* 2017;**816**:107-115.
35. Kolodgie FD, Gold HK, Burke AP, Fowler DR, Kruth HS, Weber DK, Farb A, Guerrero LJ, Hayase M, Kutys R, Narula J, Finn AV, Virmani R. Intraplaque Hemorrhage and Progression of Coronary Atheroma. 2003;**349**(24):2316-2325.
36. Sluimer JC, Daemen MJ. Novel concepts in atherogenesis: angiogenesis and hypoxia in atherosclerosis. *J Pathol* 2009;**218**(1):7-29.
37. Marsch E, Theelen TL, Demandt JA, Jeurissen M, van Gink M, Verjans R, Janssen A, Cleutjens JP, Meex SJ, Donners MM, Haenen GR, Schalkwijk CG, Dubois LJ, Lambin P, Mallat Z, Gijbels MJ, Heemskerk JW, Fisher EA, Biessen EA, Janssen BJ, Daemen MJ, Sluimer JC. Reversal of hypoxia in murine atherosclerosis prevents necrotic core expansion by enhancing efferocytosis. *Arterioscler Thromb Vasc Biol* 2014;**34**(12):2545-53.
38. Kalucka J, Bierhansl L, Wielockx B, Carmeliet P, Eelen G. Interaction of endothelial cells with macrophages-linking molecular and metabolic signaling. *Pflugers Arch* 2017;**469**(3-4):473-483.
39. Hellings WE, Peeters W, Moll FL, Piers SR, van Setten J, Van der Spek PJ, de Vries JP, Seldenrijk KA, De Bruin PC, Vink A, Velema E, de Kleijn DP, Pasterkamp G. Composition of carotid atherosclerotic plaque is associated with cardiovascular outcome: a prognostic study. *Circulation* 2010;**121**(17):1941-50.
40. de Vries MR, Quax PH. Plaque angiogenesis and its relation to inflammation and atherosclerotic plaque destabilization. *Curr Opin Lipidol* 2016;**27**(5):499-506.

41. Maisonpierre PC, Suri C, Jones PF, Bartunkova S, Wiegand SJ, Radziejewski C, Compton D, McClain J, Aldrich TH, Papadopoulos N, Daly TJ, Davis S, Sato TN, Yancopoulos GD. Angiopoietin-2, a natural antagonist for Tie2 that disrupts in vivo angiogenesis. *Science* 1997;**277**(5322):55-60.
42. Fiedler U, Scharpfenecker M, Koidl S, Hegen A, Grunow V, Schmidt JM, Kriz W, Thurston G, Augustin HG. The Tie-2 ligand angiopoietin-2 is stored in and rapidly released upon stimulation from endothelial cell Weibel-Palade bodies. *Blood* 2004;**103**(11):4150-6.
43. Suri C, Jones PF, Patan S, Bartunkova S, Maisonpierre PC, Davis S, Sato TN, Yancopoulos GD. Requisite role of angiopoietin-1, a ligand for the TIE2 receptor, during embryonic angiogenesis. *Cell* 1996;**87**(7):1171-80.
44. Ejaz S, Chekarova I, Ejaz A, Sohail A, Lim CW. Importance of pericytes and mechanisms of pericyte loss during diabetes retinopathy. *Diabetes Obes Metab* 2008;**10**(1):53-63.
45. Sato TN, Tozawa Y, Deutsch U, Wolburg-Buchholz K, Fujiwara Y, Gendron-Maguire M, Gridley T, Wolburg H, Risau W, Qin Y. Distinct roles of the receptor tyrosine kinases Tie-1 and Tie-2 in blood vessel formation. *Nature* 1995;**376**(6535):70-4.
46. Thurston G, Suri C, Smith K, McClain J, Sato TN, Yancopoulos GD, McDonald DM. Leakage-resistant blood vessels in mice transgenically overexpressing angiopoietin-1. *Science* 1999;**286**(5449):2511-4.
47. Thurston G, Rudge JS, Ioffe E, Zhou H, Ross L, Croll SD, Glazer N, Holash J, McDonald DM, Yancopoulos GD. Angiopoietin-1 protects the adult vasculature against plasma leakage. *Nat Med* 2000;**6**(4):460-3.
48. Milam KE, Parikh SM. The angiopoietin-Tie2 signaling axis in the vascular leakage of systemic inflammation. *Tissue Barriers* 2015;**3**(1-2):e957508.
49. Teichert M, Milde L, Holm A, Stanicek L, Gengenbacher N, Savant S, Ruckdeschel T, Hasanov Z, Srivastava K, Hu J, Hertel S, Bartol A, Schlereth K, Augustin HG. Pericyte-expressed Tie2 controls angiogenesis and vessel maturation. *Nat Commun* 2017;**8**:16106.
50. Augustin HG, Koh GY, Thurston G, Alitalo K. Control of vascular morphogenesis and homeostasis through the angiopoietin-Tie system. *Nat Rev Mol Cell Biol* 2009;**10**(3):165-77.
51. Folkman J, Hanahan D. Switch to the angiogenic phenotype during tumorigenesis. In: *Princess Takamatsu Symposia*. 1991: Abstract 22, p. 339-347.
52. Weinberg R, Hanahan DJC. The hallmarks of cancer. 2000;**100**(1):57-70.
53. Carmeliet P, Jain RK. Angiogenesis in cancer and other diseases. *Nature* 2000;**407**(6801):249-257.
54. Post S, Peeters W, Busser E, Lamers D, Sluijter JP, Goumans MJ, de Weger RA, Moll FL, Doevendans PA, Pasterkamp G, Vink A. Balance between angiopoietin-1 and angiopoietin-2 is in favor of angiopoietin-2 in atherosclerotic plaques with high microvessel density. *J Vasc Res* 2008;**45**(3):244-50.

55. Virmani R, Kolodgie FD, Burke AP, Finn AV, Gold HK, Tulenko TN, Wrenn SP, Narula J. Atherosclerotic plaque progression and vulnerability to rupture: angiogenesis as a source of intraplaque hemorrhage. *Arterioscler Thromb Vasc Biol* 2005;**25**(10):2054-61.
56. Michel JB, Virmani R, Arbustini E, Pasterkamp G. Intraplaque haemorrhages as the trigger of plaque vulnerability. *Eur Heart J* 2011;**32**(16).
57. Guo L, Harari E, Virmani R, Finn AV. Linking Hemorrhage, Angiogenesis, Macrophages, and Iron Metabolism in Atherosclerotic Vascular Diseases. *Arterioscler Thromb Vasc Biol* 2017;**37**(4):e33-e39.
58. Guo L, Akahori H, Harari E, Smith SL, Polavarapu R, Karmali V, Otsuka F, Gannon RL, Braumann RE, Dickinson MH, Gupta A, Jenkins AL, Lipinski MJ, Kim J, Chhour P, de Vries PS, Jinnouchi H, Kutys R, Mori H, Kutyna MD, Torii S, Sakamoto A, Choi CU, Cheng Q, Grove ML, Sawan MA, Zhang Y, Cao Y, Kolodgie FD, Cormode DP, Arking DE, Boerwinkle E, Morrison AC, Erdmann J, Sotoodehnia N, Virmani R, Finn AV. CD163+ macrophages promote angiogenesis and vascular permeability accompanied by inflammation in atherosclerosis. *J Clin Invest* 2018;**128**(3):1106-1124.
59. Boyle JJ, Harrington HA, Piper E, Elderfield K, Stark J, Landis RC, Haskard DO. Coronary intraplaque hemorrhage evokes a novel atheroprotective macrophage phenotype. *Am J Pathol* 2009;**174**(3):1097-108.
60. Provenzale JM. Imaging of Angiogenesis: Clinical Techniques and Novel Imaging Methods. *American Journal of Roentgenology* 2007;**188**(1):11-23.
61. Nagy E, Eaton JW, Jeney V, Soares MP, Varga Z, Galajda Z, Szentmiklosi J, Mehes G, Csonka T, Smith A, Vercellotti GM, Balla G, Balla J. Red cells, hemoglobin, heme, iron, and atherogenesis. *Arterioscler Thromb Vasc Biol* 2010;**30**(7):1347-53.
62. de Vries MR, Parma L, Peters HAB, Schepers A, Hamming JF, Jukema JW, Goumans M, Guo L, Finn AV, Virmani R, Ozaki CK, Quax PHA. Blockade of vascular endothelial growth factor receptor 2 inhibits intraplaque haemorrhage by normalization of plaque neovessels. *J Intern Med* 2019;**285**(1):59-74.
63. Taqueti VR, Di Carli MF, Jerosch-Herold M, Sukhova GK, Murthy VL, Folco EJ, Kwong RY, Ozaki CK, Belkin M, Nahrendorf M, Weissleder R, Libby P. Increased microvascularization and vessel permeability associate with active inflammation in human atheromata. *Circ Cardiovasc Imaging* 2014;**7**(6):920-9.
64. Garrett HE, Dennis EW, DeBakey ME. Aortocoronary Bypass With Saphenous Vein Graft: Seven-Year Follow-Up. *JAMA* 1973;**223**(7):792-794.
65. Favaloro RG. Saphenous vein graft in the surgical treatment of coronary artery disease. Operative technique. *J Thorac Cardiovasc Surg* 1969;**58**(2):178-85.
66. Owens CD. Adaptive changes in autogenous vein grafts for arterial reconstruction: clinical implications. *J Vasc Surg* 2010;**51**(3):736-46.
67. Walts AE, Fishbein MC, Matloff JM. Thrombosed, ruptured atheromatous plaques in saphenous vein coronary artery bypass grafts: ten years' experience. *Am Heart J* 1987;**114**(4 Pt 1):718-23.
68. Campeau L, Enjalbert M, Lesperance J, Bourassa MG, Kwiterovich P, Jr., Wacholder S, Sniderman A. The relation of risk factors to the development of atherosclerosis in

- saphenous-vein bypass grafts and the progression of disease in the native circulation. A study 10 years after aortocoronary bypass surgery. *N Engl J Med* 1984;**311**(21):1329-32.
69. Yazdani SK, Farb A, Nakano M, Vorpahl M, Ladich E, Finn AV, Kolodgie FD, Virmani R. Pathology of drug-eluting versus bare-metal stents in saphenous vein bypass graft lesions. *JACC Cardiovasc Interv* 2012;**5**(6):666-74.
70. Meir KS, Leitersdorf E. Atherosclerosis in the apolipoprotein-E-deficient mouse: a decade of progress. *Arterioscler Thromb Vasc Biol* 2004;**24**(6).
71. Getz GS, Reardon CA. Animal models of atherosclerosis. *Arterioscler Thromb Vasc Biol* 2012;**32**(5):1104-15.
72. Silvestre-Roig C, de Winther MP, Weber C, Daemen MJ, Lutgens E, Soehnlein O. Atherosclerotic plaque destabilization: mechanisms, models, and therapeutic strategies. *Circ Res* 2014;**114**(1):214-26.
73. Piedrahita JA, Zhang SH, Hageman JR, Oliver PM, Maeda N. Generation of mice carrying a mutant apolipoprotein E gene inactivated by gene targeting in embryonic stem cells. *Proc Natl Acad Sci U S A* 1992;**89**(10):4471-5.
74. Plump AS, Smith JD, Hayek T, Aalto-Setälä K, Walsh A, Verstuyft JG, Rubin EM, Breslow JL. Severe hypercholesterolemia and atherosclerosis in apolipoprotein E-deficient mice created by homologous recombination in ES cells. *Cell* 1992;**71**(2):343-53.
75. van den Maagdenberg AM, Hofker MH, Krimpenfort PJ, de Bruijn I, van Vlijmen B, van der Boom H, Havekes LM, Frants RR. Transgenic mice carrying the apolipoprotein E3-Leiden gene exhibit hyperlipoproteinemia. *J Biol Chem* 1993;**268**(14):10540-5.
76. Lutgens E, Daemen M, Kockx M, Doevendans P, Hofker M, Havekes L, Wellens H, de Muinck ED. Atherosclerosis in APOE*3-Leiden transgenic mice: from proliferative to atheromatous stage. *Circulation* 1999;**99**(2):276-83.
77. van Vlijmen BJ, van den Maagdenberg AM, Gijbels MJ, van der Boom H, HogenEsch H, Frants RR, Hofker MH, Havekes LM. Diet-induced hyperlipoproteinemia and atherosclerosis in apolipoprotein E3-Leiden transgenic mice. *J Clin Invest* 1994;**93**(4):1403-10.
78. Gijbels MJ, van der Cammen M, van der Laan LJ, Emeis JJ, Havekes LM, Hofker MH, Kraal G. Progression and regression of atherosclerosis in APOE3-Leiden transgenic mice: an immunohistochemical study. *Atherosclerosis* 1999;**143**(1):15-25.
79. Lardenoye JH, de Vries MR, Lowik CW, Xu Q, Dhore CR, Cleutjens JP, van Hinsbergh VW, van Bockel JH, Quax PH. Accelerated atherosclerosis and calcification in vein grafts: a study in APOE*3 Leiden transgenic mice. *Circ Res* 2002;**91**(7):577-84.
80. Zou Y, Dietrich H, Hu Y, Metzler B, Wick G, Xu Q. Mouse model of venous bypass graft arteriosclerosis. *Am J Pathol* 1998;**153**(4):1301-10.
81. Lardenoye JH, de Vries MR, Deckers M, van Lent N, Hanemaaijer R, van Bockel JH, Quax PH. Inhibition of intimal hyperplasia by the tetracycline derived mmp inhibitor doxycycline in vein graft disease in vitro and in vivo. *EuroIntervention* 2005;**1**(2):236-43.

82. Wezel A, de Vries MR, Maassen JM, Kip P, Peters EA, Karper JC, Kuiper J, Bot I, Quax PHA. Deficiency of the TLR4 analogue RP105 aggravates vein graft disease by inducing a pro-inflammatory response. *Sci Rep* 2016;**6**:24248.
83. Karper JC, de Vries MR, van den Brand BT, Hoefler IE, Fischer JW, Jukema JW, Niessen HW, Quax PH. Toll-like receptor 4 is involved in human and mouse vein graft remodeling, and local gene silencing reduces vein graft disease in hypercholesterolemic APOE*3Leiden mice. *Arterioscler Thromb Vasc Biol* 2011;**31**(5):1033-40.
84. de Vries MR, Niessen HW, Lowik CW, Hamming JF, Jukema JW, Quax PH. Plaque rupture complications in murine atherosclerotic vein grafts can be prevented by TIMP-1 overexpression. *PLoS One* 2012;**7**(10):e47134.
85. Pittet MJ, Weissleder R. Intravital imaging. *Cell* 2011;**147**(5):983-91.
86. Taqueti VR, Jaffer FA. High-resolution molecular imaging via intravital microscopy: illuminating vascular biology in vivo. *Integrative biology : quantitative biosciences from nano to macro* 2013;**5**(2):278-290.
87. Wagner R. *Erläuterungstafeln zur Physiologie und Entwicklungsgeschichte: mit vorzüglicher Rücksicht auf seine Lehrbücher über Physiologie und vergleichende Anatomie: dreißig Tafeln mit 385 Figuren, von denen 221 nach der Natur gezeichnet sind*: Leopold Voss; 1839.
88. Mempel TR, Scimone ML, Mora JR, von Andrian UH. In vivo imaging of leukocyte trafficking in blood vessels and tissues. *Curr Opin Immunol* 2004;**16**(4):406-17.
89. Helmchen F, Denk W. Deep tissue two-photon microscopy. *Nature methods* 2005;**2**(12):932-940.
90. Denk W, Strickler JH, Webb WW. Two-photon laser scanning fluorescence microscopy. *Science (New York, N.Y.)* 1990;**248**(4951):73-76.
91. Alieva M, Ritsma L, Giedt RJ, Weissleder R, van Rheenen J. Imaging windows for long-term intravital imaging: General overview and technical insights. *Intravital* 2014;**3**(2):e29917.