



Universiteit  
Leiden  
The Netherlands

## **Microcoil MRI of plants and algae at ultra-high field : an exploration of metabolic imaging**

Schadewijk, R. van

### **Citation**

Schadewijk, R. van. (2020, April 30). *Microcoil MRI of plants and algae at ultra-high field : an exploration of metabolic imaging*. Retrieved from <https://hdl.handle.net/1887/87517>

Version: Publisher's Version

License: [Licence agreement concerning inclusion of doctoral thesis in the Institutional Repository of the University of Leiden](#)

Downloaded from: <https://hdl.handle.net/1887/87517>

**Note:** To cite this publication please use the final published version (if applicable).

Cover Page



Universiteit Leiden



The handle <http://hdl.handle.net/1887/87517> holds various files of this Leiden University dissertation.

**Author:** Schadewijk, R. van

**Title:** Microcoil MRI of plants and algae at ultra-high field : an exploration of metabolic imaging

**Issue Date:** 2020-04-30

## 2 NON-INVASIVE MR IMAGING OF OILS IN *B. BRAUNII* GREEN ALGAE

Chemical Shift Selective and Diffusion-Weighted Imaging

### 2.1 ABSTRACT

*Botryococcus braunii* is an oleaginous green algae with the distinctive property of accumulating high quantities of hydrocarbons per dry weight in its colonies. Large variation in colony structure exists, yet its implications and influence of oil distribution and diffusion dynamics are not known and could not be answered due to lack of suitable *in vivo* methods. This chapter seeks to further the understanding on oil dynamics, by investigating naturally relevant large (700-1500  $\mu\text{m}$ ) and extra-large (1500-2500  $\mu\text{m}$ ) sized colonies of *Botryococcus braunii* (race B, var. *showa*) *in vivo*, using a comprehensive approach of chemical shift selective imaging, chemical shift imaging and spin echo diffusion measurements at high magnetic field (17.6 T). Hydrocarbon distribution in large colonies was found to be localised in two concentric oil layers with different thickness and concentration. Extra-large colonies were highly unstructured and oil was spread throughout colonies, but with large local variations. Interestingly, fluid channels were observed in extra-large colonies. Diffusion-weighted MRI revealed a strong correlation between colony heterogeneity, oil distribution, and diffusion dynamics in different parts of *Botryococcus* colonies. Differences between large and extra-large colonies were characterised by using  $T_2$  weighted MRI along with relaxation measurements. Our result, therefore provides first non-invasive MRI means to obtain spatial information on oil distribution and diffusion dynamics in *Botryococcus braunii* colonies.

This chapter is based on:

van **Schadewijk, R.**, van den Berg, T.E., Gupta, K.B.S.S., Ronen, I., de Groot, H.J.M. & Alia, A. (2018). Non-invasive magnetic resonance imaging of oils in *Botryococcus braunii* green algae: Chemical shift selective and diffusion-weighted imaging. *PLoS one*, 13(8), e0203217.

## 2.2 INTRODUCTION

Research into biofuel sources is receiving increasing attention as the general public and policymakers become aware of the need to shift from a fossil energy based economy to a more sustainable bio-based economy. The search for new fuels is driven in part by the predicted economic consequences of climate change, but also by the necessity of replacing finite resources (IPCC and Core Writing Team, 2014). However, first and second generation biofuels have difficulty reaching sufficient economic efficiency, due to the costly conversion steps involved, energy diverted to biomass and a large areal footprint. Therefore, third generation biofuels ideally need to provide direct conversion of CO<sub>2</sub> into biofuels, avoid conversion losses and also utilize biofuels as an energy sink which would altogether increase yield. Algae, known for their large biodiversity and range of secondary metabolites, could provide a promising solution for this challenge.

Algae-derived biomass has already been suggested as a possible aqua-based alternative to land-based crops (Demirbas and Fatih Demirbas, 2011). More specific, green algae such as *Botryococcus braunii*, (*B. braunii* var. *showa* (Nonomura, 1988)) have the advantageous property that they produce oils in lipid bodies, mainly C<sub>30</sub> to C<sub>34</sub> botryococcones, like showacene and isoshowacene (Wolf, Nonomura and Bassham, 1985; Huang and Poulter, 1989). Hydrocarbons are present in the form of oils that are similar to those found in petrochemical sources and can be readily refined using hydrocracking (Hillen *et al.*, 1982). Algaenane complexes comprised of a variety of polymethylated squalenes are also present in *B. braunii* race B (Metzger, Rager and Largeau, 2007). In addition, *B. braunii* is considered to be an important contributor to petroleum generation, being linked to Torbanite and Coorongite oil shales (Dubreuil *et al.*, 1989; Glikson, Lindsay and Saxby, 1989; Kumar *et al.*, 2016).

Oil in *Botryococcus* is believed to serve multiple purposes, including buoyancy control that allows for floatation (Glikson, Lindsay and Saxby, 1989; Eroglu, Okada and Melis, 2011). Furthermore, fatty acids excreted by some strains have allelopathic effects on other phyto algae and cause fish death during blooms (Chiang, Huang and Wu, 2004). Much attention has been focused on improving the relatively slow growth of *Botryococcus* strains (Yoshimura, Okada and Honda, 2013; Jin *et al.*, 2016). Hydrocarbon accumulation is intimately linked to cell division, being important for cell-cell cohesion and structure, thus influencing growth patterns (Tanoi, Kawachi and Watanabe, 2014). Recent work on *B. braunii* Race A indicates that lipid bodies are formed in the cytoplasm, with hydrocarbon synthesis reaching its maximum during septum formation (Hirose *et al.*, 2013). Suzuki *et al.* proposed the central role of outer cell wall layers in the formation of an intercellular matrix, formed by successive cell divisions (Suzuki *et al.*, 2013). These findings, combined with accumulation of oil in the extracellular spaces, have captivated research attention focused on using *B. braunii* for biofuels for decades, with publications starting to accumulate from the 1980's onwards. The interest increases explosively from the 2000's up to now.

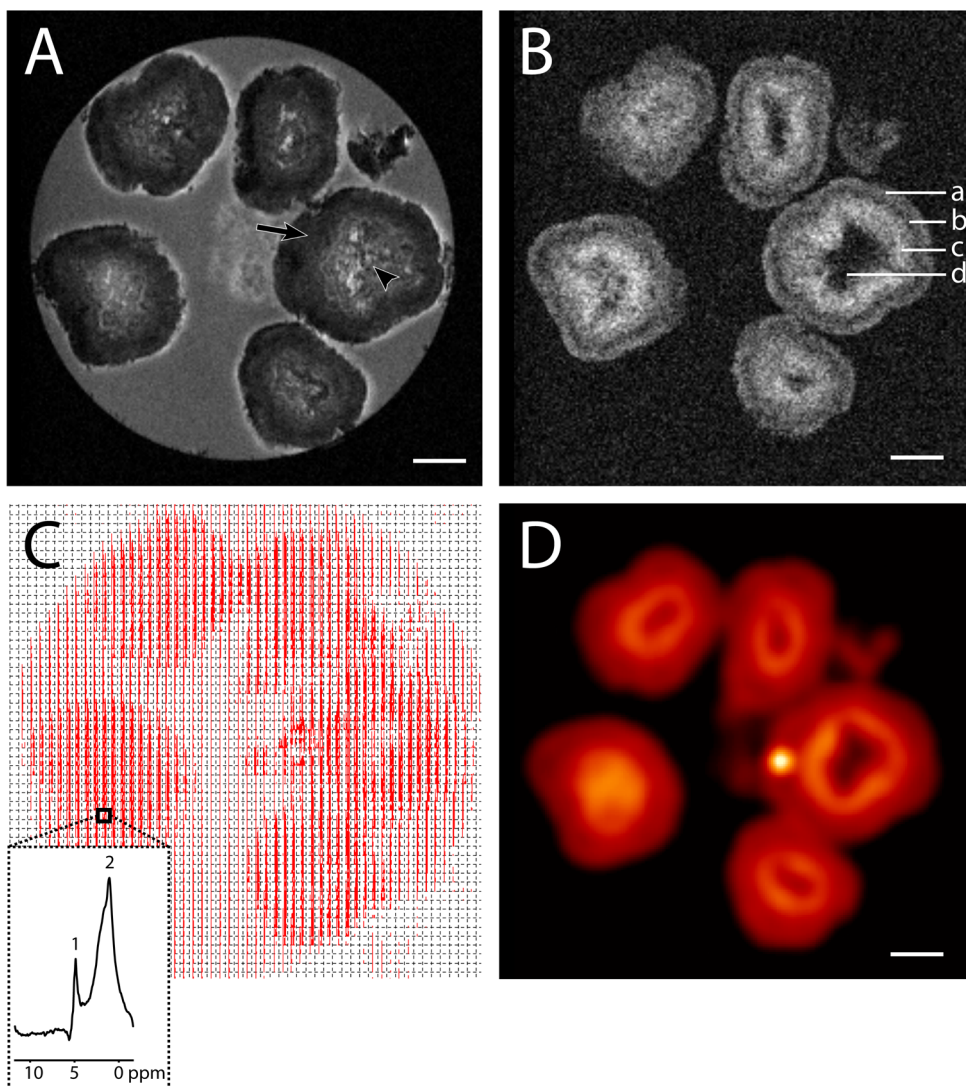
Until now, detailed information on colony anatomy is restricted to small sized colonies (30-200  $\mu\text{m}$ ) [16,18,19]. However, *B. braunii* shows a large diversity in colony size under natural conditions, with values of 30-2000  $\mu\text{m}$  being reported in the wild (Rivas, Vargas and Riquelme, 2010). There also exist naturally occurring algal blooms with colony sizes of up to 1500  $\mu\text{m}$  (Wake, 1983). Bloom formation is especially notable in water reservoirs where blooms were reported up to 1500 metric tonnes in terms of biomass (Wake and Hillen, 1980; Wake, 1983). A detailed and comprehensive picture of *B. braunii* physiology and its oil accumulation characteristics under natural conditions is still missing. It is unknown how the large variation in the colony size is linked to oil accumulation in localized domains and whether diffusion characteristics are influenced by colony structure. Observing the anatomical structure of various colonies, together with direct *in vivo* mapping of oil domains, would help us to understand the link between colony structure and oil accumulation behaviour. These observations could provide insight into the functions and mechanisms underlying these large variations in colony structure. Furthermore, distribution of different types of oil within larger sized colonies could be useful for the prediction and optimisation of production yields. The unique properties of *B. braunii* make experimental studies challenging, especially considering the copious mucilage exuding from the colonies and the large range in colony size (Wake, 1983). Optical microscopy, including staining, FLIM, etc., allow for high-resolution study of colony anatomy but relies on invasive cross sections, and the metabolite composition in localized domains within intact colonies cannot be approached. Solution state NMR and HR-MAS NMR have been utilized to determine lipid contents extracted from *B. braunii* colonies (Simpson *et al.*, 2003; Ruhl, Salmon and Hatcher, 2011). However, localized information about lipid and metabolite distribution and their relation to colony structure cannot be obtained in intact live colonies utilising these techniques. Among other strategies to overcome these limitations, confocal Raman spectroscopy has seen application in *B. braunii* race B to image specific hydrocarbons, although with low resolution (Weiss *et al.*, 2010).

This study, therefore, aims to optimize and exploit non-invasive Magnetic Resonance Imaging (MRI) in conjunction with chemical shift imaging and spectroscopy to study variation in colony structures and *in vivo* mapping of oil domains in live naturally relevant sized colonies, such as large (700-1500  $\mu\text{m}$ ) and extra-large (1500-2500  $\mu\text{m}$ ) colonies. Furthermore, diffusion MRI has been exploited to get insight into the diffusion dynamics. The results show that MRI at high magnetic field (17.6 T) allows for mapping oil/hydrocarbon distribution in *B. braunii* directly in live colonies *in vivo*, thereby avoiding many of the elaborate and invasive analytical steps typically required to investigate algae. This study also provides for the first time non-invasive MRI means to obtain spatial information of oil distribution, and diffusion dynamics *in vivo*.

## 2.3 RESULTS

To cover the wide range of colony sizes exhibited by *B. braunii*, a dedicated Micro5 probe with a built-in strong gradient ( $2 \text{ T m}^{-1}$ ) was used. A 5mm volume RF coil with large vertical linear B1 range, which was specifically designed for a 17.6 T magnet, was selected to obtain sufficient resolution and signal to noise ratio. Fig. 2.1A shows a high-resolution morphological image of the colonies obtained by the Multi Slice Multi Echo (MSME) sequence. A detailed view of successive axial slices through the colonies is shown in supplementary figure 2.S1. The image slice in Fig. 2.1A shows multiple colonies with varying size but with highly similar colony structure. The colonies are ranging 700-1500  $\mu\text{m}$  in diameter, and have moderately heterogeneous centres (black arrowhead). Henceforth I define these colonies as 'large colonies' to distinguish them from small colonies typically studied in literature (size 20-200  $\mu\text{m}$ ). The edges of these large colonies show an irregular surface area, with small extrusions representing botryoidal 'bunch-of-grapes' growth patterns. This is in line with morphological data observed for colonies of *B. braunii* with a combination of optical and electron microscopy (Tanoi, Kawachi and Watanabe, 2014). There is a dark band of 200-300  $\mu\text{m}$  thickness near the surface of the colonies (black arrow). This band is most likely comprised of cells in the extracellular matrix, in which living cells occur predominantly near the surface. In this respect, recently Wijihastuti et al. (Wijihastuti *et al.*, 2016) have shown that when *B. braunii* is grown as biofilm, the living cells are confined to a surface layer of 20-60  $\mu\text{m}$ .

**Fig. 2.1 High resolution  $\mu\text{MRI}$  images of *B. braunii* colonies measured at a magnetic field of 17.6T.** (A) Axial image of colonies ranging in size from 700-1500  $\mu\text{m}$ . Images were obtained using the multislice multiecho (MSME) pulse sequence by averaging 4 echo images (average echo time, 13 ms; repetition time, 1500 ms; field of view (FOV),  $5.0 \times 5.0 \text{ mm}$  and number of averages, 32) with a resolution of  $19.5 \times 19.5 \times 100 \mu\text{m}^3$ . Black arrowheads show central core and black arrows represent a clear dark band of 200-300  $\mu\text{m}$  thickness surrounding the colonies. (B) Chemical Shift Selective Imaging (CSSI) of oil/hydrocarbon resonances. Imaging parameters were: repetition time, 1500 ms; echo time, 8.3 ms; number of averages, 64; resolution,  $19.5 \times 19.5 \times 250^3 \mu\text{m}$ . Receiver bandwidth used was 100 kHz. Excitation pulse of 600 Hz wide at -3.35 ppm with respect to water resonance was used. High oil containing region (region a, c) and low/no oil region (region b, d) can be clearly seen. (C) Matrix display of chemical shift imaging spectra. CSI data was recorded with a repetition time of 1100 ms, echo time of 12 ms and slice thickness was 0.25 mm. Total averages were 62. Resolution obtained was  $156 \times 156 \times 250 \mu\text{m}^3$ . Spectral width used was 10 kHz (13.33 ppm) and  $32 \times 32$  matrix was reconstructed into  $64 \times 64$  voxels. Inset: Representative spectra of single voxel showing residual water (1) and fat resonances (2). The main  $-(\text{CH}_2)_n-$  signal in colonies is centred around 1.3 ppm, with side lobes from  $-(\text{CH}_2)_n-\text{CH}_3$  up-field and  $-\text{CH}_2-\text{CH}=\text{CH}-$ ,  $-\text{CH}_2-\text{CH}_2-\text{COOR}$  extending downfield. (D) CSI voxel intensity thresholding. Signals between 0.80 to 1.25 ppm corresponding to fat were chosen to reconstruct CSI images and overlaid with corresponding  $T_2$ -weighted MSME image using the Bruker CSI Visualisation Tool. Scale bar: 500  $\mu\text{m}$ .



### 2.3.1 CHEMICAL SHIFT SELECTIVE IMAGING

The Chemical Shift Selective Imaging (CSSI) Sequence was utilised to resolve the spatial distribution of oil and water in *B. Braunii* large colonies (Fig. 2.1B and 2.S2 Fig.).

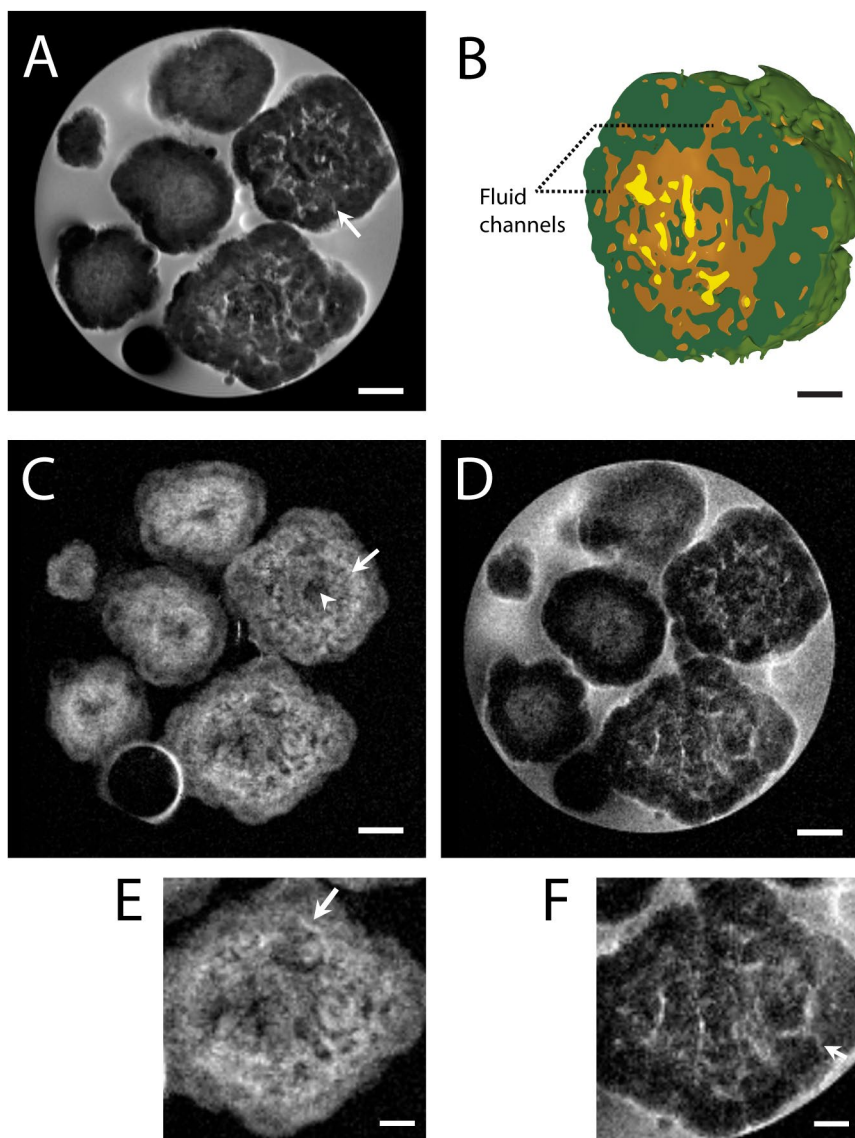
Though oils are generally present in very high proportion, other compounds such as algaenane share similar resonant frequencies as that of botryococcenes oils, causing them to be registered jointly in the CSSI images. In this work, I use the term oil to describe this hydrocarbon fraction, with it being understood that it is a part of a complex mixture of hydrocarbons and their derivatives. In the image slice shown in Fig. 2.1B, oil is localized in two defined concentric rings, that are the cross sections of an outer layer 100-150  $\mu\text{m}$  thick (region a) and an inner layer 200-300  $\mu\text{m}$  thick (region c). The outer layer can be

attributed to a hydrocarbon rich region of the extracellular matrix surrounding living cells [12]. The thicker inner layer shows a high signal intensity of oil that can be attributed to the hydrocarbon cross-linked network associated with cell remnants comprised of layers of mother cups (Wake, 1983). In addition, the thicknesses of both the hydrocarbon containing layers are uniform over the sample, across different colonies and over the range of colonies size (700-1500  $\mu\text{m}$ ) (Fig. 2.1B). The region of 100  $\mu\text{m}$  thick (region b) between the two oil layers corresponds to a transition region between the living cells (layer a) and the cell remnants (layer c). Interestingly, in contrast to the outer layers, oil was not detected in the centres of the colonies. It is unlikely that oil is present in this region and CSSI sequence could not detect it due to line broadening that may arise due to presence of paramagnetic ions, since the MSME imaging works well in these areas (Fig. 2.1A).

The contrast between oil rich and oil poor regions is greater for large colonies compared to smaller colonies (region d) (Fig. 2.1B). Localisation of the water signal by CSSI reveals the presence of high concentrations of water in the centre, but not in the outer layers of the colony (2.52 Fig.). In addition, in many colonies the distribution of water in the centre region is inhomogeneous and gradually varies, *i.e.* without distinct boundaries (2.52 Fig.).

### 2.3.2 CHEMICAL SHIFT IMAGING

The content and distribution of oil were further analysed spectroscopically by chemical shift imaging (CSI). Chemical shift imaging exploits differences in the local magnetic field experienced by protons to capture localized spectra in a 2D or 3D matrix. Because the resonance frequency of protons depends on the local magnetic field seen by the proton, protons in lipid molecules resonate at different frequency compared to those in water molecules. CSI utilises this principle of chemical shift for localised spectroscopic imaging, by forgoing the readout gradient used in imaging (including CSSI) and instead incorporating an additional phase encoding step. The pulse sequence then captures a full spectrum for each encoded voxel. CSI therefore allows mapping the spatial distribution of hydrogen nuclei associated with water or with lipid molecules. CSI has an advantage over single- or multiple-voxel localization techniques since there is no chemical shift artefact problem in CSI (Brown, 1992). Because of this, it is useful for high-field *in vivo* MRS applications in which the chemical shift dispersion increases linearly as a function of  $B_0$ . CSI data are presented as a matrix array of spectra in Fig. 2.1C. In a representative spectrum, taken from the highlighted area in Fig. 2.1C, two major peaks are visible belonging to water (1) and oil (2) within colonies (inset Fig. 2.1C). The main  $-(\text{CH}_2)_n-$  signal of lipid in colonies is centred around 1.3 ppm, with side lobes from  $-(\text{CH}_2)_n-$   $\text{CH}_3$  up-field and  $-\text{CH}_2-\text{CH}=\text{CH}-$ ,  $-\text{CH}_2-\text{CH}_2-\text{COOR}$  extending downfield. A map of oil or water can be displayed in colour and overlaid on an MR image of the same slice. The CSI image of oil signal integration is depicted in Fig. 2.1D, revealing that indeed all large colonies (700-1500  $\mu\text{m}$ ) exhibited a double oil layer (a, c) and very low oil at the centre of the colony (d). The inner oil ring appears to be higher in oil concentration as compared to the outer oil ring as seen in both CSSI and CSI measurements (Fig. 2.1B and 2.1C, D).



**Fig. 2.2 Diversity in colony types visualised at high magnetic field (17.6T).** (A) Image was obtained using 2D MSME pulse sequence (echo time, 13 ms; repetition time, 1500 ms; number of averages, 128) with an in-plane resolution of  $19.5 \times 19.5 \mu\text{m}$ . Large and extra-large size colony types can be discerned. Arrow indicates a fluid channel. (B) 3D-volume reconstruction of extra-large colony based on voxel intensity thresholding, showing presence of fluid channels. (C) Spin echo CSSI of oil/lipids showing a pattern of low (arrowhead) and high (arrow) oil containing regions. Oil appears absent in the centre of the colony. (D) Spin echo CSSI of water signal. Water channels are visible in extra-large colonies. (E) Enlarged area of (C) showing possible septum (white arrow). (F) Enlarged area of (D) showing fluid channels, some of them reaching the colony surface (white arrowhead). Scale bar:  $500 \mu\text{m}$  (A,C,D) and  $250 \mu\text{m}$  (B,E,F).

Thus, CSI is not only able to accurately measure protons of lipid/oil but also assessed its distribution and relative intensity in localized domains in *B. braunii* colonies.

### 2.3.3 EXTRA-LARGE COLONIES SHOW A SIGNIFICANTLY HETEROGENEOUS STRUCTURE

Within samples of *B. braunii* cultures, some extra-large colonies are also visible (ranging between 1500-2500  $\mu\text{m}$  diameter) (Fig. 2.2A). These colonies show a significantly heterogeneous structure especially at their centres, as compared to 'large sized' colonies (<1500  $\mu\text{m}$ ). Henceforth I refer to these colonies as 'extra-large colonies'. Interestingly, fluid channels reaching the surface are observed in these extra-large colonies, and are indicated with a white arrow in Fig. 2.2A. The 3D intensity reconstruction made from one of the extra-large colonies shown in Fig. 2.2B reveals heterogeneity in the colony and the presence of channels reaching the surface.

Analysis of the oil distribution in extra-large colonies revealed that oil was spread throughout colonies, but with large local variations (Fig. 2.2C). The double ring structure as observed for smaller colonies, was also present in extra-large colonies, but the hypo-intense region between the rings was less clear. In contrast to smaller colonies, the central part of the extra-large colonies contains a pattern of low (arrowhead) and high (arrow) concentrations of oil. Conversely, water distribution for the extra-large colonies shown in Fig. 2.2D indicates that water is distributed throughout the colony in the form of channels, with some of these channels or interfaces reaching the colony surface (Fig. 2.2F). Curiously, some hyper intensities were observed in the oil CSSI image, which can be speculated to be a part of the interface or septum between sub-colonies (Fig. 2.2E, arrow). A false colour overlay image generated from Fig. 2.2C and 2.2D revealed distribution of the water and oil signal (2.S3 Fig.). In general, local highs in oil are correlated with a local depletion of water and vice versa. Additionally, the area in between the oil rings of a large colony appears dark in 2.S3 Fig., implying that both oil and water signals are weak in this area (white arrow).

### 2.3.4 $T_1$ AND $T_2$ RELAXATION PROPERTIES OF *B. BRAUNII* COLONIES

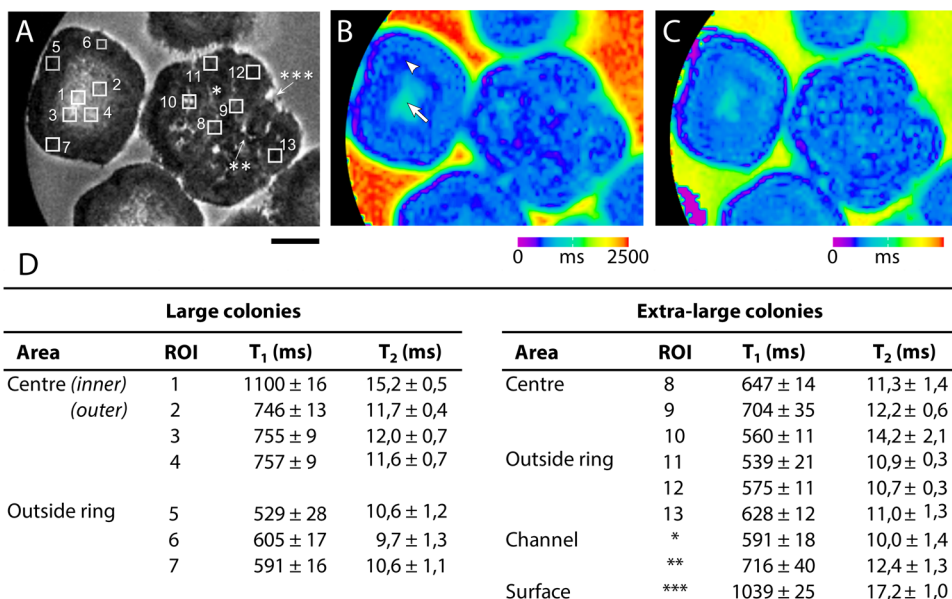
Morphological variation and differences in oil concentrations between colonies can also be reflected in proton longitudinal ( $T_1$ ) and transverse ( $T_2$ ) relaxation properties, which can be used as surrogate biomarkers for a colony type. In order to evaluate relaxation variations within colonies, several representative regions of interest (ROI) were selected within a large sized (top left) and in an extra-large colony (middle) (Fig. 2.3A). The  $T_1$  and  $T_2$  relaxation times were calculated and compared with observed structural details shown in tabular form in Fig. 2.3D.

The longest  $T_1$  was observed at the inner centre of the large sized colony, (region 1,  $\sim 1100$  ms), while the outer central region shows significantly shorter  $T_1$  (regions 2-4,  $\sim 753$  ms). Hence, it can be concluded that the composition of the central water-containing region of these colonies is heterogeneous. The outer layers of these colonies

(regions 5-7) exhibit shorter  $T_1$  (average  $\sim 578$  ms). The difference in  $T_1$  for the central and surrounding regions is also clearly visible in the  $T_1$  map depicted in Fig. 2.3B, showing a long  $T_1$  for a confined light blue area in the centre of the large sized colony (white arrow) and significantly shorter relaxation times for the surrounding regions (dark blue, white arrowhead).

Extra-large colonies exhibited a variation in the distribution of  $T_1$  relaxation time. The  $T_1$  varied between  $\sim 560$  ms to  $\sim 704$  ms (regions 8-10) within the central part of the colony. The heterogeneity of  $T_1$  in the central part is more pronounced in extra-large colonies as compared to large colonies. The colony outside ring  $T_1$  was very similar in comparison to large colonies, ranging from  $\sim 539$  to  $\sim 628$  ms (regions 11-13).

Fluid channels within the extra-large colony have varied  $T_1$  relaxation times as denoted by asterisks in Fig. 3A ( $\sim 591$  ms and  $\sim 716$  ms). Based on these values, it can be concluded that there is possibly variation in fluid composition corroborating the findings from CSSI imaging. However, visibility of fluid channels depends on both  $T_1$  and  $T_2$  contrast, since the image intensity is not directly correlated with the  $T_1$  relaxation time.



**Fig. 2.3**  $T_1$  and  $T_2$  relaxometry and mapping of *B. braunii* colonies. Relaxation measurement was performed using RAREVTR sequence (TR-array, 5500-200 ms; TE, 27-4.5 ms; number of averages, 16; matrix size,  $128 \times 128$ ; FOV,  $0.5 \times 0.5$  mm; resolution was  $39 \times 39 \times 250 \mu\text{m}^3$ ). (A) A representative image showing regions of interest (ROI) placed on two representative colonies (one large and one extra-large size colony) for calculating  $T_1$  and  $T_2$  relaxation times. Scale bar: 500  $\mu\text{m}$ . (B)  $T_1$  map derived from RAREVTR sequence, showing the region of high (white arrow) and low  $T_1$  (white arrowhead). Colour scale was generated with Paravision 'colour 256' scheme which ranges from 0 to 2500 ms. (C)  $T_2$  map derived from RAREVTR sequence showing a sharp edge of low  $T_2$  surrounding all colonies (black arrow). Colour scale ranges from 0 to 40ms. (D) Tabulated data of  $T_1$  and  $T_2$  relaxation times calculated from ROI indicated in (A).

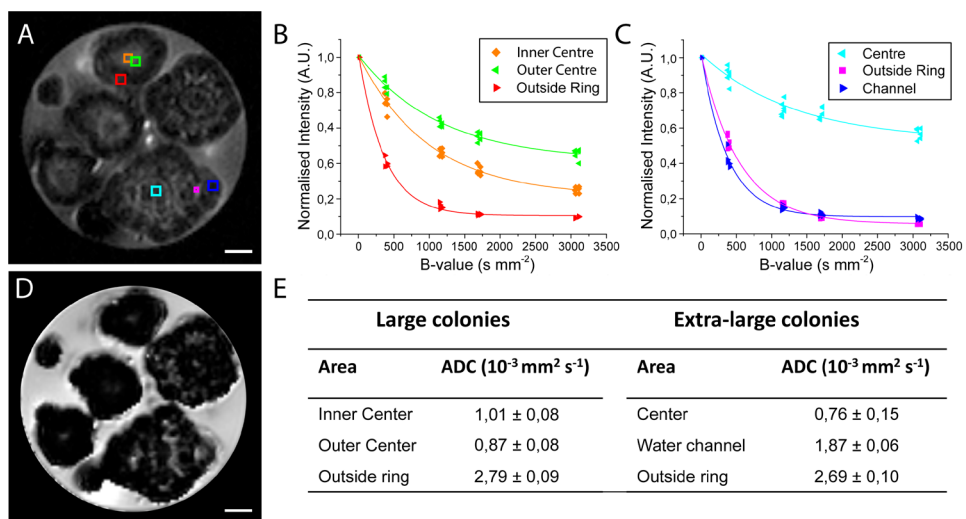
The transverse relaxation time or spin-spin relaxation time,  $T_2$ , is a specific attribute of spins, which depends on their surroundings. Interaction between spins, for example, coupling to neighbouring nuclei, destroys the phase coherence; therefore, the  $T_2$  relaxation time can be a sensitive indicator of the variation in the microenvironment within a colony volume. The centre of the large sized colony exhibited the longer  $T_2$  ( $15.2 \pm 0.5$  ms) as seen by the blue-green region in Fig. 2.3C. In contrast, the outer central regions (region 2-4) have significantly lower  $T_2$  ( $\sim 11.6$ – $12.0$  ms). The edge of the colony show lower  $T_2$  relaxation time (ranging from  $\sim 9.7$  ms to  $\sim 10.6$  ms (region 5-7), which is also reflected by a dark purple ring seen in the  $T_2$  map (Fig. 2.3C, black arrow).

In extra-large colonies, the  $T_2$  times measured in the centre show high variation (ranged from  $\sim 11.3$  ms to  $\sim 14.2$  ms). In contrast, in large size colonies,  $T_2$  relaxation time spread was smaller in the centre (region 2-4), confirming that the sample composition may be more homogeneous in these colonies. On the other hand, the  $T_2$  relaxation times in the centre of the extra-large colonies was significantly different, especially due to the presence of fluid channels (\* and \*\*). Overall, these results confirm the imaging data that extra-large colonies are more heterogeneous in appearance as compared to normally sized colonies. In general the variation in  $T_2$  over different region is rather small, which could be due to the fact that  $T_2$  values of different fraction (a mixture of water and hydrocarbon) within a voxel are averaged. In addition, high level of hydrocarbons do not appear to translate to longer  $T_2$  relaxation times. This may possibly be a result of enhanced rate of relaxation of hydrocarbons due to interactions with the local environment.

A hyper-intense ring is visible at the surface of all the colonies as seen clearly in Fig. 2.3A. This ring was especially visible under  $TR \leq 1500$  ms. This hyper-intense ring is also reflected in the  $T_1$  map (Fig. 2.3B) and to a lesser extent present in the  $T_2$  map (Fig. 2.3C). In the  $T_1$  map, the ring appears as a transition zone with increasingly higher  $T_1$  further away from the colony. The transition zone (\*\*\*) contained a long  $T_1$  of  $\sim 1039$  ms. It is likely caused by diffusion mediated interactions between the surrounding medium and the exopolysaccharide fibrillary sheath of *B. braunii* (Díaz Bayona and Garcés, 2014; Furuhashi *et al.*, 2016).

### 2.3.5 DIFFUSION BEHAVIOUR IS CORRELATED TO COLONY SIZE

To resolve correlations between colony structure and diffusion dynamics in water and oil rich regions, apparent diffusion coefficients (ADC) in colonies were assessed with a series of images captured with incrementally increasing diffusion sensitising gradient strengths (Fig. 2.4). Diffusion weighting works on the basis of twin dephasing gradient echoes with opposing direction. Because of this, only stationary protons are rephased completely. Protons that diffuse experience a net gradient and are dephased proportional to the distance travelled. In general, free water is most strongly dephased leading to a progressive darkening of background medium signal. Under a B-value of  $1182 \text{ s mm}^{-2}$ , the water signal is already strongly diminished (Fig. 2.4A).



**Fig. 2.4 Diffusion is strongly correlated to colony size.** Diffusion measurements were performed using a spin echo pulse sequence containing a pair of mono-polar diffusion-sensitising gradients (TR, 1500 ms; TE, 10.1ms; 16 averages; diffusion gradient duration 2.5 ms and gradient separation of 5 ms; effective B-values range: 14, 406, 1182, 1723, 3123  $\text{s mm}^{-2}$ ). (A) A diffusion image showing regions of interest (ROI) placed on two representative colonies (one large and one extra-large sized colony) for calculating apparent diffusion coefficient (ADC). Colour-coded ROIs are correlated to the signal decay curves in (B) and (C). Diffusion intensity decay curves normalized to unity for representative regions of interest on large sized (B) and extra-large size (C) colony. (D) ADC map generated through Bruker internal 'dtraceb' algorithm. (E) Table of calculated ADC values for regions of interest shown in (A). Scale bar in A and D: 500  $\mu\text{m}$ .

Remarkably, oil-rich regions in large colonies exhibited very low dephasing under strong gradients, as indicated by bright signal in these areas (2.54 Fig. and 2.51 Video). It implies that diffusion is highly restricted in oil rich regions, which appears to hold to a lesser extent for extra-large heterogeneous colonies as well.

Quantification of diffusion was achieved by calculation of apparent diffusion coefficients (ADC) for selected ROIs placed on two different types of colonies as shown in Fig. 2.4A. A mono-exponential model for fitting shown in Fig. 2.4B and Fig. 2.4C reflects the combined contributions of the water fraction and hydrocarbon fraction to the ADC. Because the hydrocarbon fraction is resistant to signal attenuation at the diffusion sensitising gradient strengths used ( $3123 \text{ s mm}^{-2}$ ), it can be assumed to be constant for the purposes of mono-exponential curve fitting. Thus ADC reflects predominantly water diffusion. ADCs were also calculated at each voxel position for display in the ADC map depicted in Fig. 2.4D. As summarized in tabular form in Fig. 2.4E, the centre of a large size colony exhibited some restriction of diffusion  $1.01 \times 10^{-3} \text{ mm}^2 \text{ s}^{-1}$  as compared to outside medium ( $2.4 \times 10^{-3} \text{ mm}^2 \text{ s}^{-1}$ ). The immediate area outside the central core (outer centre) was on average lower in diffusion at  $0.87 \times 10^{-3} \text{ mm}^2 \text{ s}^{-1}$  corresponding to the thickest oil band observed in Fig. 2.2C. The diffusion was found to be highest at the edge of colony ( $2.79 \times 10^{-3} \text{ mm}^2 \text{ s}^{-1}$ ). This value was even higher than the values observed for the

surrounding medium. This could possibly be due to enhanced relaxation rates related to the 'halo' phenomenon observed in  $T_1$  and  $T_2$  maps. Most anisotropy in diffusion was observed for the centre of extra-large colonies (Fig. 2.4), while the region containing a fluid-filled interface was comparatively low in anisotropy.

Within the centres of extra-large heterogeneous colonies, a water channel exhibited an ADC value of  $1.87 \times 10^{-3} \text{ mm}^2 \text{ s}^{-1}$ , interestingly higher than the large colony centre. Other parts of the interior exhibited low apparent diffusion coefficient ( $0.76 \times 10^{-3} \text{ mm}^2 \text{ s}^{-1}$ ). Similar to the large sized colony, edge ADC of extra-large colonies is very high ( $2.69 \times 10^{-3} \text{ mm}^2 \text{ s}^{-1}$ ).

The ADCs are highly co-localised with the  $T_1$  relaxation characteristics shown in Fig. 2.3B. The presence of interfaces between sub-colonies provides clues for possible anisotropy in diffusion, therefore six equally spaced diffusion directions were recorded, which also served to avoid background interference from imaging gradients in ADC calculation.

## 2.4 DISCUSSION

This work provides the first non-invasive MRI means to analyse morphology and internal structural variation of *B. braunii* colonies and obtain spatial information of oil distribution, and diffusion dynamics *in vivo*. Large size colonies (700-1500  $\mu\text{m}$  diameter) show a well-defined central core and number of surrounding layers. Previous studies indicate that the central core may be filled with the remainder of dead cells and their extracellular matrix (Guy-Ohlson, 1998). If this is the case, it would stand to reason that oil would also be present here. However, this does not appear to be the case as illustrated by the absence of oil in colony centres measured by CSSI of oil resonances (Fig. 2.1B). Though oil has been widely proposed as having important energy storage functions for algae, it has been reported that *B. braunii* is not capable of degrading its own long-chain hydrocarbons (Schenk *et al.*, 2008)(Largeau, Casadevall and Berkaloff, 1980). Thus, it is likely that algae do not store oil reserves in the centre, and oil found in the colonies is restricted either to the areas where living cells are localized and producing the oil or in the area immediate next to the living cell layer containing extracellular matrix. It is known that in large *B. braunii* colonies, living cells are exclusively located on outer rings of the colony (Wake, 1983). This is in contrast to small *showa* colonies (50-200  $\mu\text{m}$ ), where live cells are distributed in subcolonies throughout the entire colony (Suzuki *et al.*, 2013). The CSSI, CSI as well as relaxation data clearly show that these outer ring areas of the colony contain high concentration of oil. The two concentric oil layers may be attributed to the complex extracellular matrix connecting individual cells (Weiss *et al.*, 2012; Uno *et al.*, 2015). This notion is in line with the low apparent diffusion coefficient observed on these oil containing rings (Fig. 2.4).

In contrast to large colonies, the extra-large *B. braunii* colonies (1500-2500  $\mu\text{m}$  diameter) show a significantly different internal makeup, namely an altogether more heterogeneous central part and less defined outer rings. These colonies correspondingly contain a more heterogeneous distribution of oil including at the central part of the

colonies. The CSSI imaging of oil shows that less defined outer ring of these extra-large colonies is rich in oil content. The finding that oil is localised near the surface of both large colonies and extra-large colonies may have some implications for oil extraction from *B. braunii* colonies. For example, solvent-based extraction of oils for larger colonies could occur at similar efficiencies compared to smaller colonies, since the required penetration depth stays relatively equal (Fig. 2.1B) (Wijihastuti *et al.*, 2016).

One of the most important findings of this study is the observation of the existence of fluid channels, which could be visualized for the first time in live *B. braunii* colonies. In addition, by exploiting various MRI methods it was possible to characterise the composition of these channels. However, the role of fluid channels in extra-large colonies is not clear. Since the network of water based fluid channels was found to be reaching to the surface of the colonies, its role in nutrient diffusion could be possible. The apparent diffusion coefficient measurements show that fluid channels have relatively low diffusion restriction as compared to other areas of the colonies.

The results of MSME imaging, relaxation and diffusion measurements also provide a clue toward nutrient and solvent exchange at the surface of colonies. The surface ring hyperintensity found in MSME imaging, is attributed to diffusion generated  $T_1$  contrast as it appears most strongly under short TR ( $\leq 1500$ ms) (Brownstein and Tarr, 1979; Kaufmann *et al.*, 2008). Hyperintense rings are known to arise from porous organic surfaces in contact with bulk water (Kaufmann *et al.*, 2008). Although the thickness of the colony fibrillary sheath is known to be circa 4-7  $\mu\text{m}$ , the resulting ring phenomenon is much larger, in the order of 50  $\mu\text{m}$  (Fig. 2.3) (Uno *et al.*, 2015). It can be postulated that this reflects a highly porous nature of the colony sheath to small molecules including water. Diffusion coefficient was found to be very high at the edge of the colony. This value was even higher than observed for surrounding medium. This could possibly be due to enhanced relaxation rates linked to the 'halo' phenomenon observed in  $T_1$  and  $T_2$  maps (Fig. 2.3 and 2.4).

The extra-large heterogeneous colonies observed in this work may have been formed by the combination of several smaller colonies or by having multiple seed-colonies. Important to this argument is the knowledge that *B. braunii* is known to form biofilms as well as inclusion in bacterial biofilms (Rivas, Vargas and Riquelme, 2010; Zhang and Lin, 2014). This property is especially useful in Biofilm Photobioreactors (PBRs), which are seen as a promising avenue for commercialisation (Hoh, Watson and Kan, 2016). Linking of sub colonies together to form an extra-large colony is thus certainly plausible; possible in the life-cycle of *B. braunii*, and would provide a fast biomass accumulation scenario. Importantly, it provides a plausible mode of water channel formation, arising from interstitial space between growth clusters of *B. braunii*. These channels are particularly well visualised when viewed as a maximum intensity projection MIP, as seen in supplementary video (2.S2 Video). Curiously, segmentation of cells by retaining-wall shells is well known, but these shells are rich in hydrocarbons, not water (Weiss *et al.*, 2012). Thus, my hypothesis may mean the organisational model for extra-large colonies

is more complex than the current life cycle models of smaller colonies in literature. My findings on colony organization are summarised graphically in 2.55 Fig. It can be concluded that imaging secondary metabolites directly and *in vivo* using MRI is feasible and provides an advantageous platform for the study of oleaginous algae and biofilms.

## 2.5 MATERIALS AND METHODS

### 2.5.1 BOTRYOCOCCUS BRAUNII CULTIVATION

*B. braunii*, variant *showa*, was grown in a bubble column on a modified CHU-13 medium (Chu, 1942). The medium was composed of  $\text{CaCl}_2 \cdot 2\text{H}_2\text{O}$  ( $108 \text{ mg L}^{-1}$ ),  $\text{MgSO}_4 \cdot 7\text{H}_2\text{O}$  ( $200 \text{ mg L}^{-1}$ ) and  $\text{K}_2\text{HPO}_4$  ( $104.8 \text{ mg L}^{-1}$ ),  $\text{KNO}_3$  ( $1.2 \text{ g L}^{-1}$ ),  $\text{Na}_2\text{O}_4\text{Se}$  ( $9.44 \text{ mg L}^{-1}$ ),  $\text{FeNaEDTA}$  ( $20 \text{ mg L}^{-1}$ ). Micronutrients traces consisted of  $\text{CuSO}_4 \cdot 5\text{H}_2\text{O}$  ( $0.08 \text{ mg L}^{-1}$ ),  $\text{ZnSO}_4 \cdot 5\text{H}_2\text{O}$  ( $0.19 \text{ mg L}^{-1}$ ),  $\text{CoSO}_4 \cdot 7\text{H}_2\text{O}$  ( $0.09 \text{ mg L}^{-1}$ ),  $\text{MnSO}_4 \cdot \text{H}_2\text{O}$  ( $1.27 \text{ mg L}^{-1}$ ),  $\text{Na}_2\text{MoO}_4 \cdot 2\text{H}_2\text{O}$  ( $0.06 \text{ mg L}^{-1}$ ),  $\text{H}_3\text{BO}_3$  ( $2.86 \text{ mg L}^{-1}$ ) and concentrated  $\text{H}_2\text{SO}_4$  ( $0.01 \text{ ml L}^{-1}$ ).  $\text{KNO}_3$  concentration was chosen so as to minimise the potential of nitrogen growth limitations. Citric acid was omitted from the medium composition, ensuring phototrophic growth due to the absence of a carbon source. All ingredients were autoclaved separately and final medium was adjusted to pH 7.2 with NaOH. Cultures were transferred to fresh medium every 2 weeks to maintain exponential growth.

Culture illumination was provided by continuous cool LED lighting with a Correlated Colour Temperature (CCT) of 4300K and light intensity of 30 Klux or approximately  $450 \mu\text{mol s}^{-1} \text{ m}^{-2}$ . Temperature was maintained at  $25 \pm 1 \text{ }^\circ\text{C}$  under continuous sparging with ambient air. To prevent evaporation due to gas bubbling, air was wetted by sparging through distilled water prior to entering the culture vessel. Cultures were grown in high light ( $450 \mu\text{mol s}^{-1} \text{ m}^{-2}$ ) under continuous illumination for 15 weeks. Under these conditions colonies achieved remarkably large and extra-large sizes (700-2500  $\mu\text{m}$ ). For the MRI measurements, the colonies were transferred using a 2 ml volume pipet to a glass dish, drained of excess medium and then transferred by spatula to a 5 mm NMR tubes. Teflon stoppers were inserted into the tubes to prevent displacement and dehydration of the colonies. Colonies were kept in culture medium during *in vivo* MRI measurements.

### 2.5.2 MRI ACQUISITION

All experiments were performed on a 17.6 T (750 MHz), vertical 89 mm wide bore magnet (Bruker Biospin, Ettlingen, Germany) in combination with an Avance I console. A Bruker Micro5 probe with 5mm birdcage resonator and a built-in  $48 \text{ mT m}^{-1} \text{ A}^{-1}$  ( $1.92 \text{ T m}^{-1}$  at 40 A) gradient system coupled to BAFPA 40A amplifiers was used for all measurements. All spectrometer operation was controlled by a Linux PC running Topspin 2.0PV and Paravision 5.1. Sample temperature was maintained at  $293 \pm 1 \text{ K}$  through gradient water-cooling.

#### 2.5.2.1 MULTI SLICE MULTI ECHO

Anatomical reference images were acquired using a Multiple Slice Multi Echo Sequence (MSME), refocusing magnetisation from an initial  $90^\circ$  pulse with a  $180^\circ$  pulse echo train.

The following basic parameters were used for Fig. 1A: echo train length = 4; All echo images were summed to produce a composite image. Average echo time (TE) = 13ms; Repetition time (TR) = 1500 ms; receiver bandwidth = 100 kHz; number of averages = 32; Field of View (FOV) = 5 × 5 mm<sup>2</sup>; matrix size = 256 × 256; and resolution = 19.5 × 19.5 × 100 μm<sup>3</sup>.

### 2.5.2.2 RAREVTR $T_1$ AND $T_2$ MAPPING

Longitudinal ( $T_1$ ) and transverse ( $T_2$ ) relaxation maps were obtained using a Rapid Acquisition with Relaxation Enhancement with Variable TR (RAREVTR) pulse sequence. The sequence used a saturation scheme (*i.e.*, varied TR) to acquire  $T_1$  and used a multi-echo CPMG scheme (*i.e.*, varied TE) to acquire  $T_2$ . The following parameters were used: TR-array = 200, 400, 800, 1500, 3000, 5500 ms; TE = 4.5, 9.0, 13.5, 18.0, 22.5, 27 ms for each TR; echo spacing = 4.5 ms; RARE factor = 1; Number of averages (NA) = 16; matrix = 128 × 128; acquisition time = 4 hours 52 minutes. The field of view was 5 × 5 mm<sup>2</sup> with a thin slice of 0.25 mm thick to prevent partial volume effects, resulting in a resolution of 39 × 39 × 250 μm<sup>3</sup>. The voxel volume was 3.8 × 10<sup>-4</sup> mm<sup>3</sup> and a receiver bandwidth of 100 kHz was used. A single slice was acquired to prevent interslice modulation effects. ROIs were manually defined using an Image Sequence Analysis tool package (ISA) (Paravision 5.1, Bruker), Transverse relaxation was calculated using the fit function:  $M(t) = C \left( \frac{t}{T_2} \right)$ , where C = signal intensity, and  $T_2$  = transverse relaxation time. The  $T_1$  values were determined by image sequence analysis using a fit function:  $M(t) = M_0 \times (1 - e^{-\frac{t}{T_1}})$ , where  $M_0$  is the equilibrium magnetization. Built-in functions were used to generate  $T_1$  and  $T_2$  relaxation maps from the parameter fitting on a pixel by pixel basis.

### 2.5.2.3 CHEMICAL SHIFT SELECTIVE IMAGING

Chemical Shift Selective Imaging (CSSI) was used to acquire selective water and fat/oil images separated on the basis of biochemical composition, as opposed to differences in  $T_2$  in inversion-recovery methods (Haase *et al.*, 1985). A narrow bandwidth 90° Gaussian pulse was used for on resonance frequency selective excitation. FOV and Matrix were identical to MSME anatomical imaging: FOV = 5 × 5 mm<sup>2</sup>, Matrix = 256 × 256. Further basic parameters are as following: Receiver bandwidth = 100 kHz, TR = 1500 ms. Measurements were averaged 64 times for a total acquisition time of 6 hours 49 minutes. Two separate measurements were performed with 1500 Hz and 600 Hz of excitation bandwidth respectively. The water oil frequency difference was determined to be 2.7 kHz at 17.6 T. Signal cross contamination was prevented by choosing a bandwidth of 1.5 kHz, covering the whole oil containing spectral region.

For Fig. 1B and 1C, Excitation bandwidth = 1500 Hz, -3.00 ppm. Slice thickness = 500 μm; resolution 19.5 × 19.5 × 500 μm<sup>3</sup> and TE = 6.2 ms. Number of averages of Fig. 4B = 220. For Fig. 2B and 2C, Excitation bandwidth = 600 Hz, oil excitation was offset to 1.75 ppm. Slice thickness = 250 μm; resolution = 19.5 × 19.5 × 250 μm<sup>3</sup> and TE = 8.3 ms.

#### 2.5.2.4 CHEMICAL SHIFT IMAGING

Chemical Shift Imaging (CSI) was utilised in spin echo slab selective mode. CSI employs two orthogonal phase encoding steps with pulsed gradients to record a pure spectroscopic echo upon acquisition, instead of a conventional readout gradient used in imaging. A Hanning function weighted  $k$ -space acquisition scheme was utilised, as implemented by the Bruker '*weighted*' measuring method, for an improved Spatial Response Function (SRF). Basic parameters were as follows: TR = 1100 ms; TE = 12 ms; Matrix =  $32 \times 32$ ; FOV =  $5 \times 5 \text{ mm}^2$ ; slice thickness = 250  $\mu\text{m}$ ; resolution =  $156 \times 156 \times 250 \mu\text{m}^3$ ; number of scans = 45,000. Data was reconstructed into a  $64 \times 64$  matrix with linear smoothing for display. Excitation and refocusing was achieved using Sinc3 pulses with a bandwidth of 8000 Hz. Echoes were captured into 2048 points in 204.80 ms, spectral resolution = 2.4 Hz per point; and Spectral width = 10 kHz (13.3 ppm). Magnetic field homogeneity in the selected volume was optimized by shimming the water resonance. A VAPOR suppression scheme of 625 ms was applied for efficient water signal saturation. Interpulse radiofrequency delay was 150, 80, 160, 80, 100, 37.2, 15 ms between seven hermite shaped CSSI modules. RF bandwidth = 900 Hz, excitation offset = -75 Hz (-0.1 ppm).

#### 2.5.3 DIFFUSION WEIGHTED MRI

Diffusion measurements were carried out with a spin echo pulse sequence containing a pair of mono-polar diffusion-sensitising gradients. Gradient orientations were isotopically distributed in six directions. Gradient strength ranged from 14, 406, 1182, 1723, 3123  $\text{s mm}^{-2}$  effective B-values, including imaging gradients. Diffusion gradient duration ( $\delta$ ) of 2.5 ms was combined with 5 ms diffusion gradient separation ( $\Delta$ ), for a total TR and TE of 1500 and 10.1 ms respectively. To obtain sufficient SNR 16 averages were recorded resulting in a total acquisition time of 16 hours. FOV was  $5 \times 5 \text{ mm}^2$ , matrix size  $96 \times 96$  and slice thickness of 0.5 mm, resulting in a resolution of  $52 \times 52 \times 500 \mu\text{m}^3$ . Receiver BW was 100 kHz.

#### 2.5.4 POST-PROCESSING AND ANALYSIS

All experimental data were acquired and processed using Paravision 5.1 (Bruker Biospin, Ettlingen, Germany) running on CentOS 3 and figures were prepared in Adobe Photoshop CC 2015.3 and Adobe Illustrator CC 2015.2 (Adobe Systems Incorporated, Mountain View, California, USA). A false colour image (S3 Fig.) was generated by overlaying CSSI Oil signal on CSSI Water signal using the '*lighten*' transfer mode.

##### 2.5.4.1 3D VOLUME RECONSTRUCTION MODELS

3D-MSME data were exported to DICOM using Paravision 5.1, consequently reconstructed in Slicer 3D 4.8 ([www.slicer.org](http://www.slicer.org), [40]) and further processed in Meshmixer (Autodesk, San Rafael, California, USA).

### 2.5.4.2 PROCESSING OF CSI DATA

Integration of selected signal areas in magnitude mode were overlaid on MSME reference spectra using the Bruker CSI Visualisation Tool. A representative 1D spectrum was processed and exported using CSI-Tool (Bruker).

### 2.5.4.3 PROCESSING OF DIFFUSION DATA

Diffusion data was processed with a trapezoid windowing function to remove DC offset artefact (window maximum between 12.5% and 87.5% of acquisition window). Windowed results were consequently analysed using the Bruker Image Sequence Analysis Tool. Signal intensity and standard deviation were derived from the internal fitting function 'dtraceb':  $S(b) = A + Ie^{Db}$  Where  $A$  is an Offset and  $I$  the amplitude of diffusion with diffusion coefficient  $D$ . Several Regions of Interest (ROI) were selected and used for further calculations. Tabulated data containing ROI decay curves was exported for further analysis. Because the system contains two fraction, *i.e.*, water ( $w$ ) and hydrocarbons ( $h$ ), normally bi-exponential fitting is required to accurately describe the system:  $S(b) = f_w e^{-bD_w} + f_h e^{-bD_h}$  Where  $f_h = 1 - f_w$ . However, because the maximum gradient strength used was only  $3123 \text{ s mm}^{-2}$ , oil is not significantly attenuated because:  $b \ll \frac{1}{D_h}$ . This means that the diffusion attenuation for the oil/hydrocarbon fraction simplifies to:  $e^{-bD_h} \approx 1$ . As a consequence the system can then be described mono-exponentially as follows:  $S(b) = f_w e^{-bD_w} + f_h$ . The mono exponential fitting was performed in OriginPro 9.1.0 with Levenberg-Marquardt algorithm iteration (OriginLab Corporation, Northampton, Massachusetts, USA).

## 2.6 ACKNOWLEDGEMENTS

Roberta Croce is thanked for her expert advice and useful discussions during the course of this study. I also thank Fons Lefeber for his assistance during various stages of MRI measurements.

## 2.7 REFERENCES

- Brown, T. R. (1992) 'Practical applications of chemical shift imaging.', *NMR in biomedicine*, 5(5), pp. 238–43.
- Brownstein, K. R. and Tarr, C. E. (1979) 'Importance of classical diffusion in NMR studies of water in biological cells', *Physical Review A*, 19(6), pp. 2446–2453. doi: 10.1103/PhysRevA.19.2446.
- Chiang, I.-Z., Huang, W.-Y. and Wu, J.-T. (2004) 'Allelochemicals Of Botryococcus Braunii (Chlorophyceae)', *Journal of Phycology*, 40(3), pp. 474–480. doi: 10.1111/j.1529-8817.2004.03096.x.
- Chu, S. P. (1942) 'The Influence of the mineral composition of the medium on the growth of planktonic algae: Part I. Methods and culture media', *Journal of Ecology*, 30(2), pp. 284–325. doi: 10.2307/2256545.
- Demirbas, A. and Fatih Demirbas, M. (2011) 'Importance of algae oil as a source of biodiesel', *Energy Conversion and Management*. Elsevier Ltd, 52(1), pp. 163–170. doi: 10.1016/j.enconman.2010.06.055.
- Díaz Bayona, K. C. and Garcés, L. A. (2014) 'Effect of different media on exopolysaccharide and biomass production by the green microalga Botryococcus braunii', *Journal of Applied Phycology*, 26(5), pp. 2087–2095. doi: 10.1007/s10811-014-0242-5.

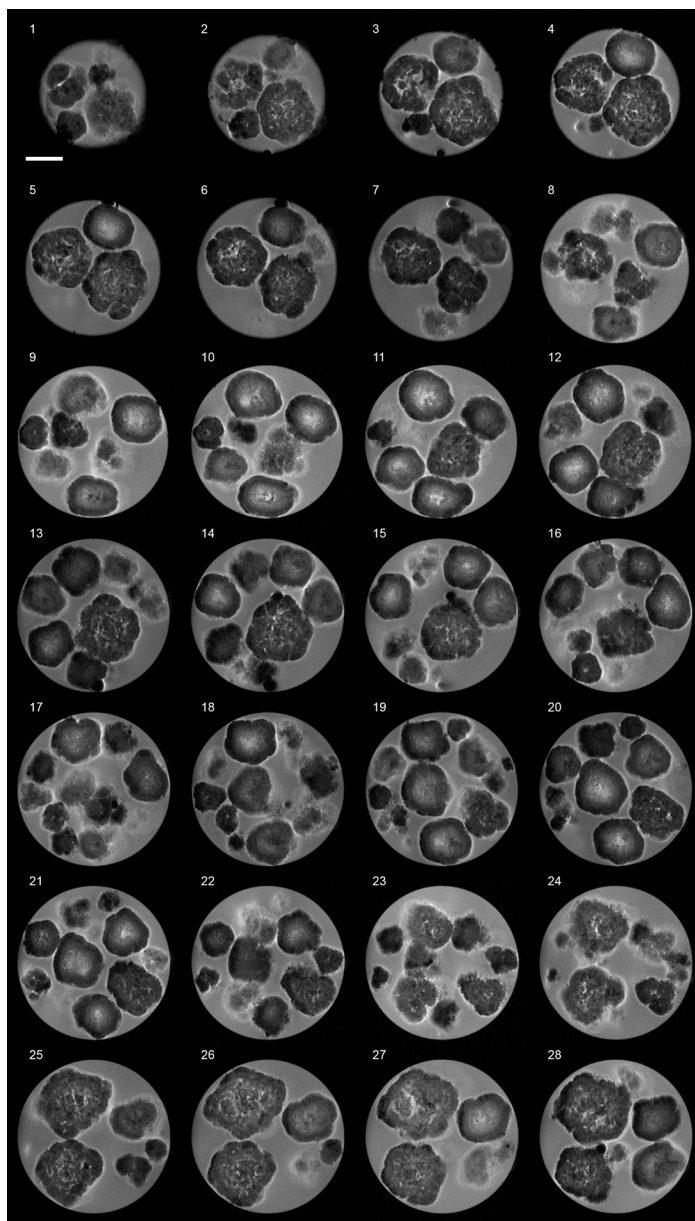
- Dubreuil, C. *et al.* (1989) 'Mechanism of formation and chemical structure of Coorongite-I. Role of the resistant biopolymer and of the hydrocarbons of *Botryococcus braunii*. Ultrastructure of Coorongite and its relationship with Torbanite', *Organic Geochemistry*, 14(5), pp. 543–553. doi: 10.1016/0146-6380(89)90034-X.
- Eroglu, E., Okada, S. and Melis, A. (2011) 'Hydrocarbon productivities in different *Botryococcus* strains: Comparative methods in product quantification', *Journal of Applied Phycology*, 23, pp. 763–775. doi: 10.1007/s10811-010-9577-8.
- Fedorov, A. *et al.* (2012) '3D slicers as an image computing platform for thw quantitative imaging network', *Magnetic resonance imaging*, 30(9), pp. 1323–1341. doi: 10.1016/j.mri.2012.05.001.3D.
- Furuhashi, K. *et al.* (2016) 'The surface structure of *Botryococcus braunii* colony prevents the entry of extraction solvents into the colony interior', *Algal Research*. Elsevier B.V., 16, pp. 160–166. doi: 10.1016/j.algal.2016.02.021.
- Glikson, M., Lindsay, K. and Saxby, J. (1989) 'Botryococcus—A planktonic green alga, the source of petroleum through the ages: Transmission electron microscopical studies of oil shales and petroleum source rocks', *Organic Geochemistry*, 14(6), pp. 595–608. doi: 10.1016/0146-6380(89)90039-9.
- Guy-Ohlson, D. (1998) 'The use of the microalga *Botryococcus* in the interpretation of lacustrine environments at the Jurassic-Cretaceous transition in Sweden', *Palaeogeography, Palaeoclimatology, Palaeoecology*, 140(1–4), pp. 347–356. doi: 10.1016/S0031-0182(98)00019-4.
- Haase, A. *et al.* (1985) '1H NMR chemical shift selective (CHESS) imaging.', *Physics in medicine and biology*, 30(4), pp. 341–344. doi: 10.1088/0031-9155/30/4/008.
- Hillen, L. W. *et al.* (1982) 'Hydrocracking of the oils of *Botryococcus braunii* to transport fuels', *Biotechnology and Bioengineering*, 24(1), pp. 193–205. doi: 10.1002/bit.260240116.
- Hirose, M. *et al.* (2013) 'Active hydrocarbon biosynthesis and accumulation in a green alga, *Botryococcus braunii* (race A)', *Eukaryotic Cell*, 12(8), pp. 1132–1141. doi: 10.1128/EC.00088-13.
- Hoh, D., Watson, S. and Kan, E. (2016) 'Algal biofilm reactors for integrated wastewater treatment and biofuel production: A review', *Chemical Engineering Journal*. Elsevier B.V., 287, pp. 466–473. doi: 10.1016/j.cej.2015.11.062.
- Huang, Z. and Poulter, C. D. (1989) 'Isoshowacene, A C31 hydrocarbon from *Botryococcus braunii* var. *showa*', *Phytochemistry*, 28(11), pp. 3043–3046. doi: 10.1016/0031-9422(89)80276-6.
- IPCC and Core Writing Team (2014) *Climate Change 2014: Synthesis Report. Contribution of Working Groups I, II and III to the Fifth Assessment Report of the Intergovernmental Panel on Climate Change*. Edited by L. Meyer and R. K. Pachauri. Geneva, Switzerland.
- Jin, J. *et al.* (2016) 'Characteristics of extracellular hydrocarbon-rich microalga *Botryococcus braunii* for biofuels production: Recent advances and opportunities', *Process Biochemistry*. Elsevier Ltd, 51(11), pp. 1866–1875. doi: 10.1016/j.procbio.2015.11.026.
- Kaufmann, I. *et al.* (2008) 'Diffusion generated T1 and T2 contrast', *Journal of Magnetic Resonance*, 192(1), pp. 139–150. doi: 10.1016/j.jmr.2008.02.008.
- Khatri, W. *et al.* (2014) 'Hydrocarbon production in high density *Botryococcus braunii* race B continuous culture', *Biotechnology and Bioengineering*, 111(3), pp. 493–503. doi: 10.1002/bit.25126.
- Kumar, M. *et al.* (2016) 'Botryococcus from the early Eocene lignite mines of western India: inferences on morphology, taphonomy and palaeoenvironment', *Palynology*. Taylor & Francis, 6122(January), pp. 1–31. doi: 10.1080/01916122.2016.1259667.

- Largeau, C., Casadevall, E. and Berkloff, C. (1980) 'The biosynthesis of long-chain hydrocarbons in the green alga *Botryococcus braunii*', *Phytochemistry*, 19(6), pp. 1081–1085. doi: 10.1016/0031-9422(80)83060-3.
- Metzger, P., Rager, M.-N. N. and Largeau, C. (2007) 'Polyacetals based on polymethylsqualene diols, precursors of algaenan in *Botryococcus braunii* race B', *Organic Geochemistry*, 38(4), pp. 566–581. doi: 10.1016/j.orggeochem.2006.12.003.
- Nonomura, A. M. (1988) '*Botryococcus braunii* var. *showa* (Chlorophyceae) from Berkeley, California, United States of America', *Jpn J Phycol*, 36, pp. 285–291.
- Rivas, M. O., Vargas, P. and Riquelme, C. E. (2010) 'Interactions of *Botryococcus braunii* Cultures with Bacterial Biofilms', *Microbial Ecology*. Springer-Verlag, 60(3), pp. 628–635. doi: 10.1007/s00248-010-9686-6.
- Ruhl, I. D., Salmon, E. and Hatcher, P. G. (2011) 'Early diagenesis of *Botryococcus braunii* race A as determined by high resolution magic angle spinning (HRMAS) NMR', *Organic Geochemistry*. Elsevier Ltd, 42(1), pp. 1–14. doi: 10.1016/j.orggeochem.2010.09.004.
- Schenk, P. M. *et al.* (2008) 'Second Generation Biofuels: High-Efficiency Microalgae for Biodiesel Production', *BioEnergy Research*, 1, pp. 20–43. doi: 10.1007/s12155-008-9008-8.
- Simpson, A. J. *et al.* (2003) 'New insights on the structure of algaenan from *Botryococcus braunii* race A and its hexane insoluble botryals based on multidimensional NMR spectroscopy and electrospray-mass spectrometry techniques', *Phytochemistry*, 62, pp. 783–796. doi: 10.1016/S0031-9422(02)00628-3.
- Suzuki, R. *et al.* (2013) 'Transformation of lipid bodies related to hydrocarbon accumulation in a green alga, *Botryococcus braunii* (Race B).', *PLoS one*, 8(12), p. e81626. doi: 10.1371/journal.pone.0081626.
- Tanoi, T., Kawachi, M. and Watanabe, M. M. (2014) 'Iron and glucose effects on the morphology of *Botryococcus braunii* with assumption on the colony formation variability', *Journal of Applied Phycology*, 26(1), pp. 1–8. doi: 10.1007/s10811-013-0026-3.
- Uno, Y. *et al.* (2015) 'Colony sheath formation is accompanied by shell formation and release in the green alga *botryococcus braunii* (race B)', *Algal Research*. Elsevier B.V., 8, pp. 214–223. doi: 10.1016/j.algal.2015.02.015.
- Wake, L. V. (1983) 'Characteristics of resting state colonies of the alga *Botryococcus braunii* obtained from a bloom of the organism', *Australian Journal of Botany*, 31(Broughton 1920), pp. 605–614.
- Wake, L. V. and Hillen, L. W. (1980) 'Study of a "bloom" of the oil-rich alga *Botryococcus braunii* in the Darwin River Reservoir', *Biotechnology and Bioengineering*, XXII(1980), pp. 1637–1656. doi: 10.1002/bit.260220808.
- Weiss, T. L. *et al.* (2010) 'Raman spectroscopy analysis of botryococcene hydrocarbons from the green microalga *Botryococcus braunii*', *Journal of Biological Chemistry*, 285(42), pp. 32458–32466. doi: 10.1074/jbc.M110.157230.
- Weiss, T. L. *et al.* (2012) 'Colony organization in the green alga *Botryococcus braunii* (Race B) is specified by a complex extracellular matrix', *Eukaryotic cell*, 11(12), pp. 1424–40. doi: 10.1128/EC.00184-12.
- Wijihastuti, R. S. *et al.* (2016) 'Growth and photosynthetic activity of *Botryococcus braunii* biofilms', *Journal of Applied Phycology*. Journal of Applied Phycology, 29(3), pp. 1123–1134. doi: 10.1007/s10811-016-1032-z.
- Wolf, F. R., Nonomura, A. M. and Bassham, J. a. (1985) 'Growth and branched hydrocarbon in a strain of *Botryococcus braunii* (Chlorophyta)', *Journal of phycology*, pp. 388–396. doi: DOI: 10.1111/j.0022-3646.1985.00388.x.

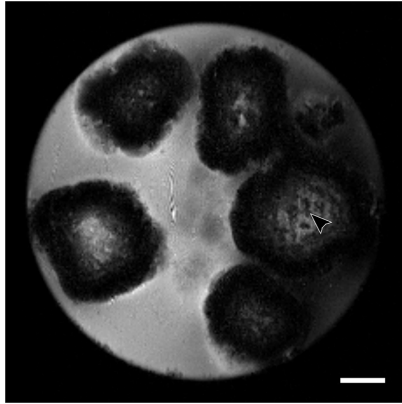
Yoshimura, T., Okada, S. and Honda, M. (2013) 'Culture of the hydrocarbon producing microalga *Botryococcus braunii* strain Showa: Optimal CO<sub>2</sub>, salinity, temperature, and irradiance conditions', *Bioresource Technology*, 133, pp. 232–239. doi: 10.1016/j.biortech.2013.01.095.

Zhang, Y. S. H. and Lin, X. X. X. (2014) 'Biofilm formation and lipid accumulation of attached culture of *Botryococcus braunii*'. doi: 10.1007/s00449-014-1287-1.

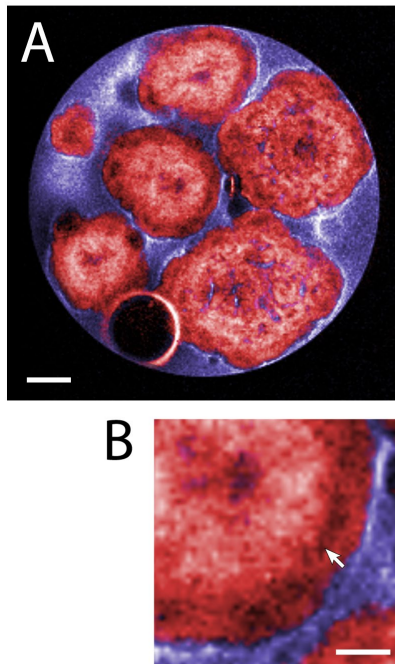
## 2.8 SUPPORTING INFORMATION



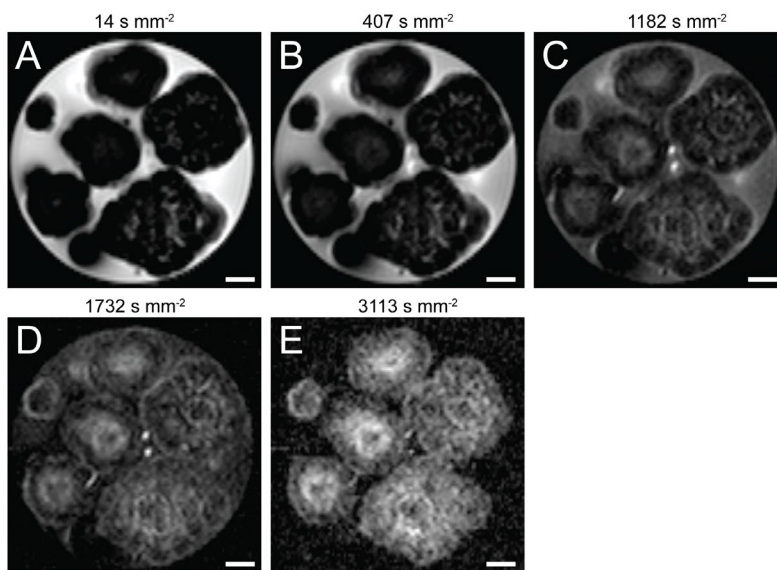
**2.S1 Fig. Pseudo-3D MSME successive axial slices through the colonies showing variation in size and structure of *B. braunii* colonies.** Imaging parameter used (TR, 1500 ms; TE, 13 ms; acquisition time, 3 h 24 m; Average, 32). Resolution  $19.5 \times 19.5 \times 200 \mu\text{m}^3$  captured with a matrix of  $256 \times 256$ . Scale bar: 1000  $\mu\text{m}$ .



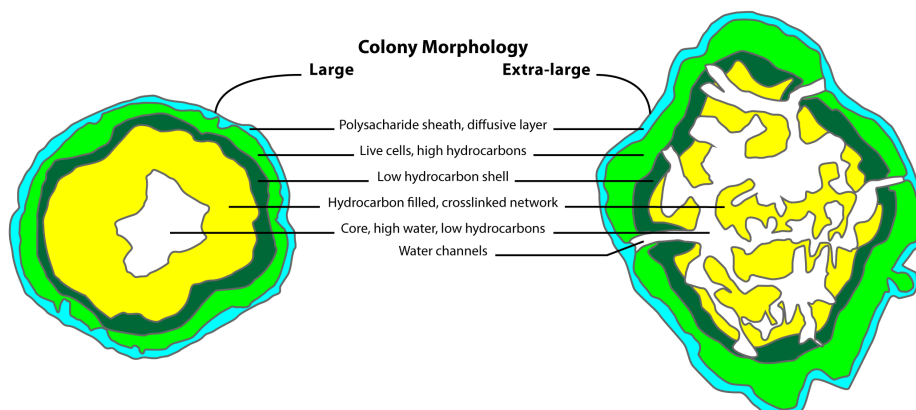
**2.S2 Fig. CSSI of water resonances.** Imaging parameters used are: repetition time, 1500 ms; echo time, 8.32 ms; number of averages, 64 and resolution,  $19.5 \times 19.5 \times 250 \mu\text{m}^3$ . Receiver bandwidth used was 100 kHz. Excitation pulse of 600 Hz wide at water resonance. Inhomogeneity in the distribution of water in the centre is seen (arrowhead). The water signal was found to be low in two oil containing bands (arrows). Scale bar: 500  $\mu\text{m}$ .



**2.S3 Fig. False colour overlay of oil/lipid signal in red and water signal in blue.** An enlarged area of extra-large colony in (A) is shown in (B) depicting a possible septum (white arrow). Scale bar 500  $\mu\text{m}$  (A), 100  $\mu\text{m}$  (B).



**2.S4 Fig. Diffusion Weighted Images captured for ADC Mapping.** Individual images from the +Z diffusion weighting direction. TR, 1500 ms; TE, 10.1 ms; 16 averages; diffusion gradient duration 2.5 ms and gradient separation of 5 ms; effective B-values range: 14, 406, 1182, 1723, 3123 s mm<sup>-2</sup>. Scale bar 500  $\mu$ m.



**2.S5 Fig. Summarising model of *B. braunii* colony organisation.** Shown are a large colony (700-1500  $\mu$ m) (left) and extra-large colony (>1500  $\mu$ m) (right). Boundary model derived from integration of MSME and CSSI imaging results on morphology of the colonies seen in Fig. 2.

Note: to view video material, please visit the online version of this thesis at the Leiden University Repository.

**2.S1 Video Animated movie of Diffusion weighting steps.** Movie version generated from S4 Fig. Video length 6s, 251 frames. Scale bar 500  $\mu\text{m}$ .

**2.S2 Video Maximum Intensity projection of 3D MSME imaging.** Maximum Intensity Projection Video (MIP) of 3D-MSME data of multiple colonies submerged in perfluorodecalin (PFD), which highlights the difference in core structure of large and extra-large colonies. Processed in Slicer 3D. Time between repetitions 350 ms and echo-time 4.66 ms. Time of acquisition 4 d 12 h 18 m, 29 averages. Resolution  $23 \times 23 \times 23 \mu\text{m}^3$  captured with a matrix of  $256 \times 196 \times 196$ . Video length 10 s, 360 frames.