



Universiteit
Leiden
The Netherlands

Togo at 60

Dietz, A.J.; Ehrhardt, D.W.L.; Veldkamp, F.

Citation

Dietz, A. J., Ehrhardt, D. W. L., & Veldkamp, F. (2020). Togo at 60. *Ascl Infosheet*. Retrieved from <https://hdl.handle.net/1887/87055>

Version: Publisher's Version

License: [Leiden University Non-exclusive license](#)

Downloaded from: <https://hdl.handle.net/1887/87055>

Note: To cite this publication please use the final published version (if applicable).



Togo at 60

Political history

1960 was the 'Year of Africa': many former colonies in Africa became politically independent. Of the seventeen colonies gaining independence in that year, Togo was the second one: on April 27th. Togo had been a German colony from 1884 until the First World War. In 1919, it was divided into French and British Togo on behalf of, first, the League of Nations and, later, the

United Nations - a situation that endured until 1960, when part of western Togo joined Ghana (that had already been independent since 1957), and the major part became the Republic of Togo (see Figure 1 for a political timeline).

Figure 1: Political timeline of Togo since independence



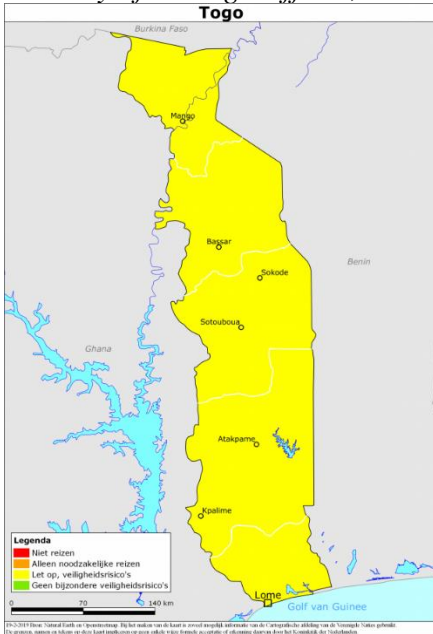
Togo's post-colonial history has been dominated by the rule of a family dynasty: President Étienne Eyadéma (1967-2005) and his son, Faure Gnassingbé (2005-today). Its early years after independence witnessed tensions with neighbouring Ghana and unsuccessful attempts by the first president of Togo Sylvanus Olympio and the second president Nicolas Grunitzky to establish effective and stable regimes. Eyadéma succeeded largely due to his support in the north of the country, and was challenged repeatedly throughout his tenure - including by armed dissidents from Ghana in 1986. While he gradually introduced democratic reforms, his hold on power remained strong until his unexpected death in 2005. The transfer of power to his son was controversial, and became a prime source of the discontent behind the widespread pro-democracy

protests that began in 2017 and were to be labelled the opposition Coalition of 14 (C14). These occurred despite the 2009 Truth and Reconciliation Commission, installed by President Gnassingbé to document and reconcile the mishaps of Togo's autocratic past.

Conflict, state fragility, and travel risks

Togo is relatively low on the 'security risk' indices. For instance, the Netherlands Ministry of Foreign Affairs currently puts Togo in the 'yellow zone', which means that there are some risks for travelers, but not major ones. See Figure 2.

Figure 2: Travel advice from the Netherlands Ministry of Foreign Affairs, February 2020



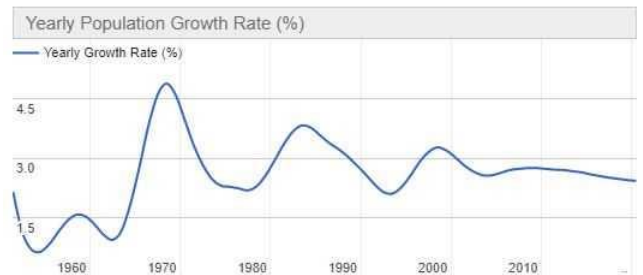
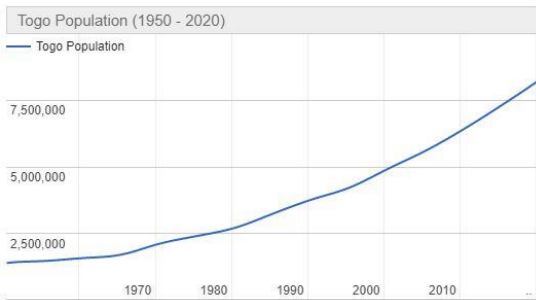
Source:
<https://www.nederlandwereldwijd.nl/landen/togo/reizen/reisadvies>

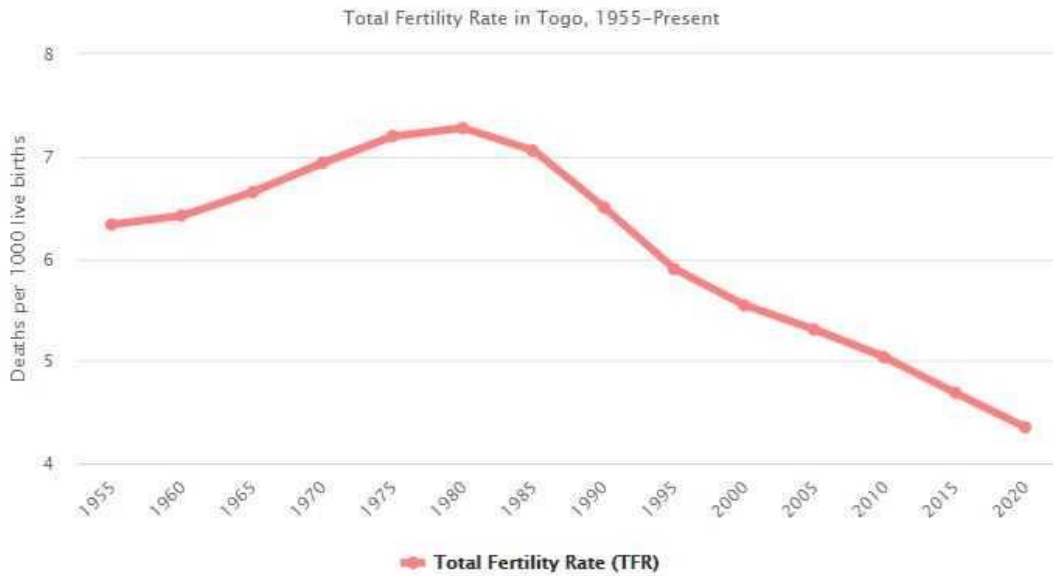
The State Fragility Index of the Fund for Peace puts Togo in the 'high warning range', with 87.4 points (most negative score would be 120.0 points), but improving (<https://fundforpeace.org/wp-content/uploads/2019/04/9511904->

[fragilestatesindex.pdf](#)). The index consists of twelve variables, and Togo has relatively good scores for group grievances and the risk of external intervention, but relatively poor scores for state legitimacy and the quality of public services.

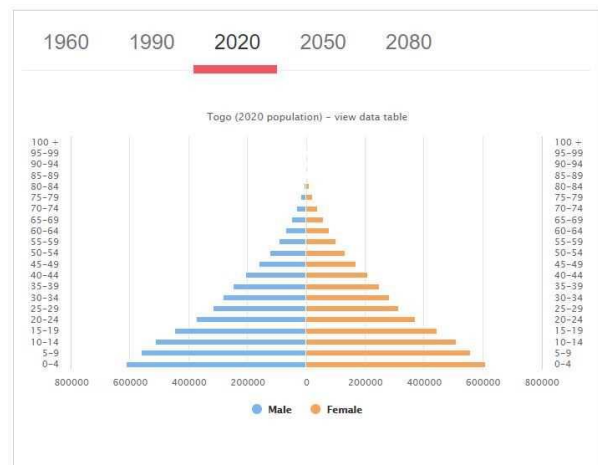
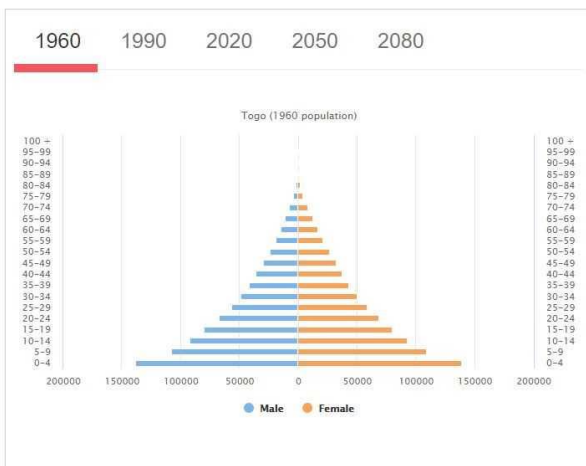
Demography

Togo's population increased more than fivefold between 1960 and 2020, mostly through high fertility rates and longer life expectancy for both males and females (also because of rapidly improving child and infant mortality figures). Population growth figures were below two percent per year in the decades before 1970 and around 1995 (mainly as a result of high outmigration), and beyond three percent per year around 1970, in the mid 1980s, and around 2000. Currently the average growth rate is around 2.4 percent per year. Total fertility was around 6.5 per woman in 1960, and increased to above 7.0 between 1970 and 1985, after which a clear demographic transition took place, with currently 4.5 births per average Togolese woman during her lifetime. As a result of these demographic developments Togo has an extremely skewed population pyramid, with many more young people than adults and elderly people. The median age changed from 18.5 years old in 1960, to only 16.7 years old in 1985 and currently 19.4 years old. Urbanization is on the increase, but the majority of the Togolese people is still rural.





Source: Worldometers



Source: Worldometers

Demographic statistics, Togo as a whole, 1960 and 2020

	1960	2020
Population	1.6 million	8.3 million
Fertility rate	6.4 children per woman	4.4 children per woman
Life expectancy (males)	40.9 years	61.2 years
Idem (females)	42.9 years	63.1 years
Median age	18.5 years	19.4 years
Infant mortality (< 1 yr)	145/1000	43/1000
Under-5 mortality	259/1000	66/1000
Urbanization rate	10%	43%
Urban population	0.2 million	3.6 million
Rural population	1.4 million	4.7 million

Source: Worldometers

Human Development Index, Togo as a whole, 1990 and 2017

Human Development Index data exist since 1990, with annual UNDP updates. Togo's Human Development Index started at a level of 0.405, when Australia was the highest with 0.866. The HDI consists of a health index, an income index and an education index, while UNDP also provides data about life expectancy, and some other indicators. Between 1990 and 2017 Togo's total HDI increased with .97 points to .502 (165th out of 189 ranked countries). Between 1990 and 2017 Togo's population increased from 3.8 million people to 7.8

million people. The increase in the HDI can particularly be attributed to major improvements in education. This is also clear from additional data that show that the calculated years of schooling for six-year-olds had increased from 7.6 years to 12.4 years, while the average years adults older than 25 years had gone to school increased from only three years in 1990 to 4.8 years in 2017. Also the average life expectancy had increased during this period. Togo's national income (in US\$ of 2011, PPP) only slightly improved: from 1,302\$ to 1,560\$, and the health index only slightly improved as well.

Togo: HDI composition, and data for 1990 and 2017

	1990	2017	2017/1990
Health Index	552	623	X 1.13
Income Index	388	415	X 1.06
Education Index	311	504	X 1.62
Life Expectancy	55.9	60.5	X 1.08
Total HDI index	405	502	X 1.24

Source: <https://globaldatalab.org/shdi/>; Indexes x 1000.

Trade statistics, Togo exports and imports, 2017

In 2017 Togo exported products for a total value of 1.6 billion \$, but imported for a total value of 8.2 billion \$

(mostly from China, Belgium, Nigeria, South Korea and the Netherlands, in that order), resulting in a massive trade deficit.

The most important export products and most important export destination in 2017 were:

Main export products (value in \$ million)		Main export destinations (value in \$ million)	
Refined petroleum	339	Cameroon	253
Gold	200	Lebanon	174
Oil	116	Burkina Faso	134
Calcium phosphate	100	India	120
Cement	92	Benin	107

Source: <https://oec.world/en/profile/country/tgo>

Protected areas and Forests

Togo currently has three national parks, 10 faunal reserves and 84 forest reserves (<http://www.parks.it/world/TG/Eindex.html>). In 2017 1.5 million hectares were protected areas (28% of Togo's total area; <https://www.protectedplanet.net/country/TG>).

A small maritime area has protected status as well. Between 1990 and 2010 Togo lost most of its forests: from 685,000 ha (12% of total land area) to only 287,000 ha (5%) <https://rainforests.mongabay.com/deforestation/2000/Togo.htm>. Other areas are mainly 'other wooded land' (in 2010: 1,246,000 ha, and areas for agriculture, livestock, hunting and gathering.

Agricultural Togo

Crop Area (in 1000 hectares), and total production (in 1000 tonnes), 1961 and 2018

	1961		2018		2018/1961	
	Area	Prod.	Area	Prod.	Area	Prod.
Maize	148	73	715	887	4.8	12.2
Dry beans	43	12	379	208	9.8	17.3
Sorghum & millet	196	80	363	303	1.9	3.8
Cassava	22	350	274	1089	12.5	3.1
Seed cotton	51	8	180	127	3.5	15.9
Vegetables	16	68	60	179	3.8	2.6
Yams	30	300	94	859	3.1	2.9
Rice (paddy)	15	19	87	145	5.8	7.6
Coffee	20	10	66	21	3.3	2.1
Groundnuts	31	11	59	44	1.9	4.0
Cocoa beans	15	12	43	41	2.9	3.4
Oil palm fruits	15	116	18	156	1.2	1.3
Fruits	1	19	16	82	16.0	4.3
Taro (cocoyams)	6	18	12	17	2.0	0.9
Other crops (area)	47		25		0.5	-
Total crop area	656		2391		3.6	

2018/1961: red = 2018 is below 1961; green: 2018 is more than 4.9 times the 1961 figures (that is: more than population increase in Togo between 1961 and 2018); black: in-between. Source: Faostat data.

Togo's land area is 5.7 million hectares, and its crop area increased from 12% to 42% of its land area between 1961 and 2018. Almost all crop areas expanded, and expansion was very rapid for fruits, cassava, dry beans and rice, crops for which the expanded urban areas, and partly an expanding middle class, created a major growth in demand. Crop yields increased for most major crops, but not for cassava (in fact average yields deteriorated considerably, from 15 t/ha to only 4 t/ha). The total production of food crops like maize, dry beans, and rice expanded more rapidly than Togo's population, and the same is true for an export crop like seed cotton. Total cereal production increased from 174,000 tonnes in 1961 to 1,339,000 tonnes in 2018, an increase of 770%, considerably more than Togo's high population increase (490%). However, total roots and tubers volumes increased only from 673,000 tonnes to 1,974,000 tonnes, an increase of 'only' 290% (but with a food value per kg that is considerably lower than the food value of cereals). As a result we can say that the Togolese diet experienced a major shift from roots and tubers to cereals. The numbers of all live animals also expanded rapidly, in total (measured in livestock units) beyond population growth numbers, with the exception of cattle and sheep. Particularly the 'cash-on-feet' livestock (with particular importance for women), chickens and goats, expanded very rapidly.

Livestock numbers (x 1000)

	1961	2018	2018/1961
Cattle	144	543	3.1
Chicken	1091	27400	25.1
Goats	365	3945	10.9
Pigs	177	1057	6.0
Sheep	438	1552	3.5
Livestock units	211	1247	5.9

Source: Faostat data; 1 livestock unit = based on 0.7 cattle; 0.1 goats/sheep/pigs; 0.01 chicken.

International migration

In 2015 447,000 people who were born in Togo lived outside the country (6% of Togo's total population of people inside and outside the country), of which 87% elsewhere in Africa (mainly Nigeria, Ghana, Côte d'Ivoire and Benin), and 13% outside Africa (less than 1% of Togo's total population: almost all in Europe, mainly in France, and Germany). In 2017 Togo had around 284,000 immigrants, almost all from within Africa, mainly from Benin, Niger, and Ghana (UN Migration Report 2017). This figure steadily increased from 90,000 in 1990.

Urban Togo

Togo's urban population increased from a mere 200,000 in 1960 (10% of its national population at Independence) to 3.6 million in 2020 (more than 40%). Most urban people live in the agglomeration of Lomé, both in the city-region of Lomé, and in the surrounding cities and peri-urban areas of Maritime Region. Growth

has been very rapid for all cities (in the range of 6 to 9 times between 1960 and 2020). However, the growth of one city stands out: Lama-Kara, or nowadays Kara, where the population increased 35 times. This was the home area of Gnassingbé Eyadéma, President of Togo between 1967 until his death in 2005



Source: Geology.com


Cities (in Regions)	Population in thousands of inhabitants		
	1960	2019	
		Wikipedia (cities)	Citipopulation.de (agglomerations)
Lomé	85	750	2,100
Sokode (Centrale)	15	118	107
(Lama-) Kara (Kara)	3	104	113
Atakpame (Plateaux)	10	81	80
Kpalime (Plateaux)	12	75	88
Bassar (Kara)	9	62	?
Tsevie (Maritime)	8	56	56
Dapaong (Savannes)	5	33	69

Source: wikipedia/ <http://worldpopulationreview.com/countries/togo-population/cities/>, citipopulation.de, and https://horizon.documentation.ird.fr/exl-doc/pleins_textes/divers17-06/010028875.pdf

Regional Inequality

Togo has 6 Regions. Between 1990 and 2017 all regions experienced rapid population growth, but the highest growth happened in Maritime, and particularly in the peri-urban zone of the capital city, Lomé. High growth was also experienced by the sub-humid Savanes area, partly because of an influx of people from neighbouring countries to the North. If we look at the regional data for human development, which exist since 1990, we see that across the board major improvements have taken place between 1990 and 2017. Both in 1990 and in 2017 the best conditions existed in Lomé, both for the HDI index as a whole, as for life expectancy and for the

education situation. The Savannes region was the least developed, although in 2017 Kara took this position for life expectancy. However, most rapid improvements took place in Savannes for the education situation, in Maritime for Life Expectancy and for HDI developments as a whole, and the changes in Lomé were slower than for all other regions for HDI as a whole and for education (for Life Expectancy Kara and Centrale showed the slowest improvements). As a result of these rapid, but differentiated improvements, the regional inequality in Togo became less pronounced, with the exception of Life Expectancy. Particularly, the education opportunities became much more equal between the six regions of the country.

Map	Region / Région	Population x 1000		'17/'90
		1990	2017	
	1 = Lomé	560	1009	1.8
	2 = Maritime	912	2298	2.5
	3 = Plateaux	980	1840	1.9
	4 = Centrale	416	782	1.9
	5 = Kara	518	938	1.8
	6 = Savannes	414	933	2.3
	Total	3800	7800	2.1

Source: <https://globaldatalab.org/shdi>, map: Wikipedia

Region	Subregional HDI			Life expectancy			Education index		
	1990	2017	17/90	1990	2017	17/90	1990	2017	17/90
1	506	593	X 1.17	59.3	63.7	X 1.07	449	627	X 1.40
2	400	532	X 1.33	55.9	63.4	X 1.13	317	544	X 1.72
3	397	470	X 1.18	56.8	60.2	X 1.06	306	465	X 1.52
4	393	490	X 1.24	55.9	58.5	X 1.05	289	504	X 1.74
5	383	464	X 1.21	54.4	56.9	X 1.05	278	465	X 1.67
6	321	420	X 1.30	53.7	59.6	X 1.11	172	439	X 2.55
Togo	405	502	X 1.24	55.9	60.5	X 1.08	311	504	X 1.62
Ineq	1.58	1.41	0.89	1.10	1.12	1.02	2.61	1.43	0.55

Source: <https://globaldatalab.org/shdi>. Ineq = Inequality: high/low

Further Reading

Country Portal: <http://countryportal.ascleiden.nl/Togo>

Selected publications: <https://www.ascleiden.nl/content/af-rica-2020-further-reading#Togo>



Reflecting on
60 years
of independence



Universiteit
Leiden

www.ascleiden.nl/africa2020

Country Information: Ton Dietz, David Ehrhardt and Fenneken Veldkamp.

Country Portal: Harro Westra

Selected publications: Germa Seuren