



Universiteit
Leiden
The Netherlands

Diagnostic procedures for assessing the severity of alloimmune fetal anemia

Sikkel, E.

Citation

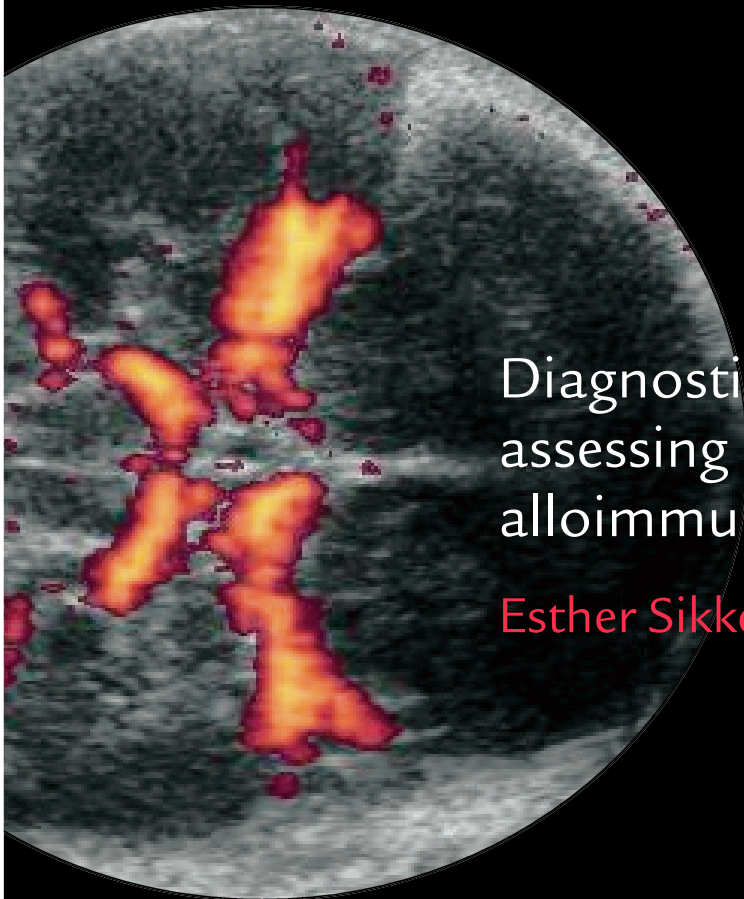
Sikkel, E. (2006, March 2). *Diagnostic procedures for assessing the severity of alloimmune fetal anemia*. Retrieved from <https://hdl.handle.net/1887/4542>

Version: Corrected Publisher's Version

License: [Licence agreement concerning inclusion of doctoral thesis in the Institutional Repository of the University of Leiden](#)

Downloaded from: <https://hdl.handle.net/1887/4542>

Note: To cite this publication please use the final published version (if applicable).



Diagnostic procedures for assessing the severity of alloimmune fetal anemia

Esther Sikkel