



Universiteit  
Leiden  
The Netherlands

## Electrocardiographic assessment of repolarization heterogeneity

Hooft van Huysduynen, Bart

### Citation

Hooft van Huysduynen, B. (2006, June 8). *Electrocardiographic assessment of repolarization heterogeneity*. Retrieved from <https://hdl.handle.net/1887/4430>

Version: Corrected Publisher's Version

License: [Licence agreement concerning inclusion of doctoral thesis in the Institutional Repository of the University of Leiden](#)

Downloaded from: <https://hdl.handle.net/1887/4430>

**Note:** To cite this publication please use the final published version (if applicable).

---

## Chapter 6

# Pulmonary valve replacement in tetralogy of Fallot improves the repolarization

Bart Hooft van Huysduynen

Ivo R. Henkens

Cees A. Swenne

Thomas Oosterhof

Harmen H.M. Draisma

Arie C. Maan

Mark G. Hazekamp

Albert de Roos

Martin J. Schalijs

Ernst E. van der Wall

Hubert W. Vliegen

Submitted

## ABSTRACT

**Background.** Pulmonary valve regurgitation may cause right ventricular failure in adult patients with Fallot's tetralogy. In these patients, prolonged depolarization and disturbed repolarization are associated with ventricular arrhythmias and sudden cardiac death. We assessed the effect of pulmonary valve replacement (PVR) on the repolarization of patients with tetralogy of Fallot.

**Methods.** Thirty Fallot patients (age  $32 \pm 9$  years, 19 male) eligible for PVR were studied with cardiac magnetic resonance imaging (CMR) before and 6 months after PVR. Electrocardiograms obtained during initial and follow-up CMR were analyzed and occurrence of ventricular arrhythmias was studied.

**Results.** Right ventricular end-diastolic volume (RV EDV) decreased from  $322 \pm 87$  to  $215 \pm 57$  ml after PVR ( $P < 0.0001$ ). The spatial QRS-T angle normalized from  $117 \pm 34$  to  $100 \pm 35^\circ$ ,  $P = 0.0004$  (normal  $< 105^\circ$ ). QT dispersion and T-wave complexity did not change significantly. T-wave amplitude decreased from  $376 \pm 121$  to  $329 \pm 100$   $\mu\text{V}$  ( $P = 0.01$ ). T-wave area decreased from  $43 \pm 15$  to  $38 \pm 13$   $\mu\text{V}\cdot\text{s}$  ( $P = 0.02$ ). Decreases in T-wave amplitude and -area were most prominent in the right precordial leads overlying the RV. Three patients had sustained ventricular arrhythmias and one patient died suddenly. All these patients had a QRS duration  $> 160$  ms. No severe ventricular arrhythmias were found in patients with a RV EDV  $< 220$  ml, QRS-T angle  $< 100^\circ$ , QT dispersion  $< 60$  ms or T-wave complexity  $< 0.30$ .

**Conclusion.** Normal repolarization indices are associated with the absence of severe ventricular arrhythmias. PVR in Fallot patients with dilated right ventricles has a beneficial effect on electrocardiographic indices of repolarization heterogeneity.

## INTRODUCTION

The prognosis of patients with a tetralogy of Fallot has improved dramatically after introduction of complete surgical repair at young age. However, residual pulmonary regurgitation may cause right ventricular failure in Fallot patients in adulthood<sup>1,2</sup>. These patients are prone to develop ventricular arrhythmias and/or sudden cardiac death. This risk increases significantly when QRS duration is more than 180 ms<sup>3</sup>. Besides a prolonged depolarization, a disturbed repolarization may play a role in arrhythmogenesis as well. Repolarization disturbances are widely recognized as contributors to arrhythmias<sup>4,5</sup> and QT dispersion has been shown to refine risk stratification for arrhythmias in Fallot patients<sup>6</sup>. The spatial angle between the QRS and T axes is an electrocardiographic index that comprises both depolarization and repolarization and has prognostic value in normal subjects and selected patient groups<sup>7-9</sup>. T-wave complexity is related to repolarization heterogeneity, which is a pro-arrhythmogenic factor<sup>10</sup>. T-wave amplitude and T-wave area are also measures of repolarization heterogeneity<sup>11,12</sup>. We have previously demonstrated that pulmonary valve replacement (PVR) reduces QRS duration and right ventricular end-diastolic volume<sup>13</sup>. In the present study we tested whether PVR also has beneficial effects on the repolarization and whether electrocardiographic indices of the repolarization are related to ventricular arrhythmias.

## METHODS

Thirty Fallot patients were evaluated (19 male), the age of the patients at the initial surgical procedure was  $5.7 \pm 3.1$  years. In 15 patients a transannular patch had been applied during the initial procedure. At PVR, their age was  $31.8 \pm 9.1$  years. Indications for PVR were moderate to severe pulmonary regurgitation in combination with right ventricular dilatation. In addition to PVR, tricuspid regurgitation was corrected in 6 patients and residual ventricular septal defects were closed in 4 patients.

### CMR

CMR was performed on a 1.5 Tesla scanner (NT15 Gyroscan, Philips, Best). Briefly, short axis images of the heart were acquired with a multiphase, ECG-triggered, multishot echoplanar gradient echo technique. Images were acquired during breath holds with a slice thickness of 10 mm and a 0.8 to 1.0 section gap. The flip angle was 30 degrees and echo time was 5 to 10 ms. Eighteen to 25 frames per cycle resulted in a temporal resolution of 22 to 35 ms<sup>14</sup>.

### ECG analysis

ECGs were obtained before the initial CMR and during the follow-up procedure 6 months after surgery. The routinely-made 10-s ECGs, digitally stored (sampling rate 500 Hz, resolution 5  $\mu$ V/bit) in our hospital ECG database, were imported into LEADS, a MATLAB (The MathWorks, Natick, MA, USA) computer program that was developed for research-oriented ECG analysis<sup>15</sup>. After QRS detection and fiducial point determination, the QRS-T complexes in the 10-s ECG were coherently averaged in order to minimize noise. Besides the standard 12-lead ECG representation of the averaged beat, a vectorcardiographic X-Y-Z representation and the magnitude of the heart vector were computed using the inverse Dower matrix<sup>16</sup>. Onset and end of QRS were computed in the vector magnitude signal by a threshold procedure and by determining the minimal vector size in between the QRS complex and the T wave, respectively. The default end-of-QRS instant was then manually adjusted to meet the Minnesota criteria<sup>17</sup> for end-of-QRS determination (being the last J-point in any of the ECG leads, while in leads with two candidate J points the earliest J point is taken). End-of-T instant was set automatically in every lead at the intercept of the steepest tangent to the terminal limb of the T wave with the baseline.

QT dispersion was calculated as the longest minus the shortest QT interval in any lead. The spatial angle between the mean electrical axes of the QRS complex and the T wave was computed from the vectorcardiogram<sup>18</sup>. T-wave complexity was derived by means of singular value decomposition of the 8 independent ECG leads I, II and V1-V6<sup>10,19</sup>. T-wave complexity was calculated by dividing the square root of the summed squared singular values 2-8 by the first singular value. Finally, the absolute T-wave amplitude and T-wave area were computed and averaged from the ECG leads.

### **Ventricular arrhythmias**

The occurrence of ventricular arrhythmias and the relation to ECG and CMR measurements was studied before and after PVR. Pre- and postoperative sustained ventricular tachycardias (lasting > 30 seconds or causing symptoms) and sudden cardiac death were categorized as severe ventricular arrhythmias. Coincidentally recorded non-sustained ventricular tachycardias were excluded from the arrhythmia analysis.

### **Statistical analysis**

All data are reported as mean  $\pm$  standard deviation. Two-sided paired and unpaired Student's t-tests were used wherever appropriate. To correct for multiple testing, the significance level of the *P*-values was determined according to the false discovery rate method<sup>20</sup>.

## RESULTS

### Changes in right ventricular volume and QRS duration

Surgery had a positive effect on right ventricular end-diastolic volume (RV EDV) which decreased from  $322 \pm 87$  ml before surgery to  $215 \pm 57$  ml after surgery ( $P < 0.0001$ ). QRS duration decreased from  $158 \pm 34$  ms to  $153 \pm 32$  ms ( $P = 0.002$ ).

### Changes in repolarization

The spatial angle between QRS and T axes decreased significantly from a preoperative value of  $117 \pm 34^\circ$  to  $100 \pm 35^\circ$  postoperatively ( $P = 0.0004$ ). QT dispersion did not change significantly, with a preoperative value of  $78 \pm 27$  ms and a postoperative value of  $85 \pm 30$  ms ( $P = 0.19$ ). Pre- and postoperative values of T-wave complexity were  $0.49 \pm 0.22$  and  $0.44 \pm 0.21$ , respectively ( $P = 0.16$ ). T-wave amplitude decreased significantly from  $376 \pm 121$   $\mu$ V to  $329 \pm 100$   $\mu$ V ( $P = 0.01$ ). T-wave area decreased significantly from  $43 \pm 15$   $\mu$ V  $\cdot$ s to  $38 \pm 13$   $\mu$ V  $\cdot$ s ( $P = 0.02$ ).

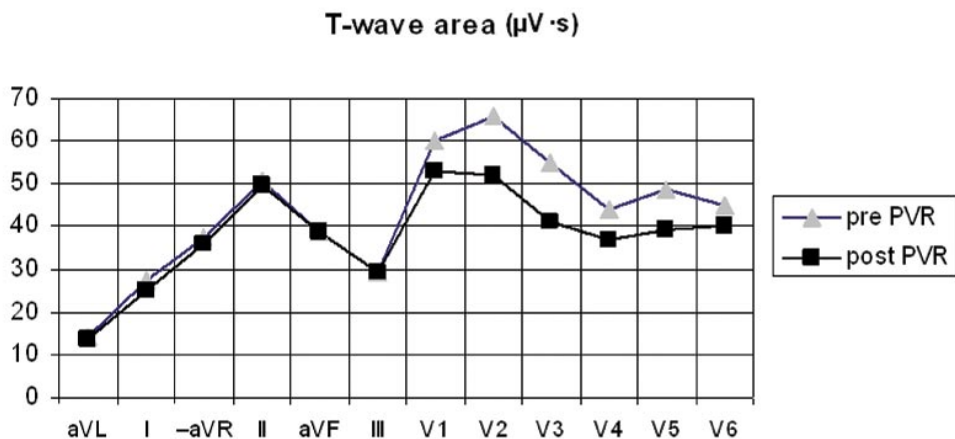
These results and the cut-off values for significance according to the false discovery rate method<sup>20</sup> are summarized in Table 1. Changes in T-wave amplitude and area for all 12 leads are shown in Figures 1 and 2. Note that changes are most pronounced in the leads overlying the right ventricle.

### Correlations between electrocardiography and right ventricular volume

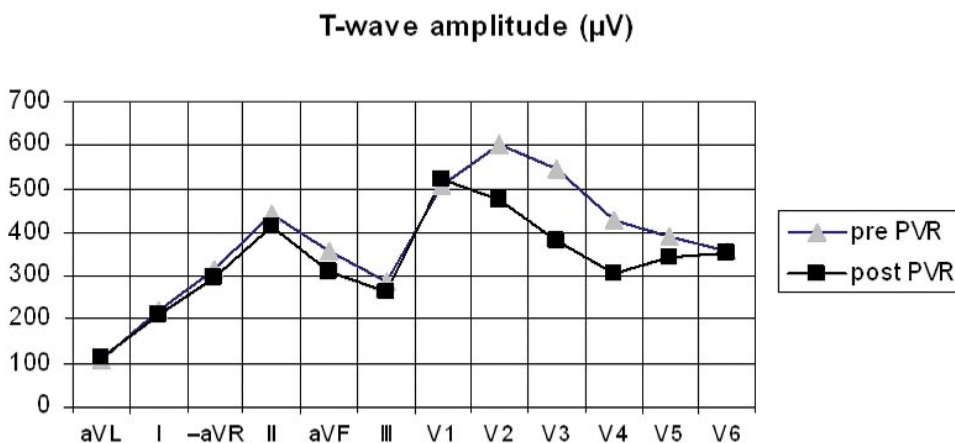
The average of the pre- and postoperative QRS duration related linearly to the average RV EDV ( $R = 0.58$ ,  $P = 0.003$ ). Changes in QRS duration correlated with changes in RV EDV ( $R = 0.45$ ,  $P = 0.03$ ). Average QT dispersion was also related to RV EDV ( $R = 0.44$ ,  $P = 0.03$ ).

### Correlations between QRS duration and repolarization indices

Average QRS durations correlated with the spatial angle ( $R = 0.70$ ,  $P < 0.0001$ ), QT dispersion ( $R = 0.62$ ,  $P = 0.0003$ ), T-wave complexity ( $R = 0.52$ ,  $P = 0.003$ ) and T-wave area ( $R = 0.43$ ,  $P = 0.02$ ).



**Figure 1.** T-wave amplitude pre- and post PVR for all leads. Right precordial leads show the largest changes in T-wave amplitude.



**Figure 2.** T-wave area pre- and post PVR for all leads. The changes in T-wave area were most significant in leads V2 and V3, leads overlying the right ventricle.

### Correlations between electrocardiographic repolarization indices

Average QT dispersion and T-wave complexity were both related to the spatial QRS-T angle ( $R = 0.48$ ,  $P = 0.007$  and  $R = 0.37$ ,  $P = 0.04$ ). Changes in T-wave amplitude were linearly related to the changes in T-wave area ( $R = 0.68$ ,  $P < 0.0001$ ). Average T-wave area was strongly related to the T-wave amplitude ( $R = 0.93$ ,  $P < 0.0001$ ).



### Ventricular arrhythmias

Follow-up was available up to  $5.5 \pm 1.9$  years after PVR. Three patients had sustained ventricular tachycardias and one patient died suddenly. This patient died 18 months post PVR. The cause of death was uncertain, but the patient was hemodynamically stable and had no co-morbidity, making arrhythmia the most probable cause of death. Two of the patients had pre- as well as postoperative ventricular tachycardias and (pre)syncope, for which automatic internal cardiac defibrillators were implanted postoperatively. The last patient had preoperative repetitive sustained ventricular tachycardias, requiring cardioversion and hospitalization. After PVR this patient remained arrhythmia free. All patients with severe ventricular arrhythmias had a QRS duration  $> 160$  ms. Among the 23 patients without any ventricular tachycardias, nine patients also had a pre- or postoperative QRS duration  $> 160$  ms. The group size was too small to analyze whether the combination of QRS duration and a repolarization measure or RV EDV could improve the specificity. However, no severe arrhythmias were found in patients with QRS-T angle  $< 100^\circ$ , QT dispersion  $< 60$  ms, T-wave complexity  $< 0.30$  or a RV EDV  $< 220$  ml.

N = 30	pre PVR	post PVR	P-values	significance cut-off value
RV EDV (ml)	$322 \pm 87$	$215 \pm 57$	$< 0.0001^*$	$< 0.007$
QRS duration (ms)	$158 \pm 34$	$153 \pm 32$	$0.002^*$	$< 0.021$
QRS-T angle ( $^\circ$ )	$117 \pm 34$	$100 \pm 35$	$0.0004^*$	$< 0.014$
QT dispersion (ms)	$78 \pm 27$	$85 \pm 30$	0.19	$< 0.05$
T-wave complexity ( $\cdot$ )	$0.49 \pm 0.22$	$0.44 \pm 0.21$	0.16	$< 0.04$
T-wave amplitude ( $\mu\text{V}$ )	$376 \pm 121$	$329 \pm 100$	$0.01^*$	$< 0.029$
T-wave area ( $\mu\text{V} \cdot \text{s}$ )	$43 \pm 15$	$38 \pm 13$	$0.02^*$	$< 0.036$

**Table 1.** Values of end diastolic volumes of the right ventricle, QRS duration and electrocardiographic repolarization indices, measured before and after pulmonary valve replacement.

\* significant P-values after false discovery rate correction i.e., below the cut-off values provided in the last column. PVR = pulmonary valve replacement; RV EDV = right ventricular end-diastolic volume.

## DISCUSSION

In this study we assessed the effects of pulmonary valve replacement in Fallot patients with dilated right ventricles on electrocardiographic indices of repolarization heterogeneity. Furthermore, we analyzed the occurrence of ventricular arrhythmias in these patients. We found that PVR not only has an effect on QRS duration but also on repolarization indices. PVR results in normalization of the spatial QRS-T angle and reduction of T-wave amplitude and area. Most electrocardiographic repolarization indices are related to the QRS duration, which in turn is related to RV EDV. The optimal discriminator of patients with severe arrhythmias was a QRS > 160 ms.

No severe arrhythmias were found in patients with QRS-T angle < 100°, QT dispersion < 60 ms, T-wave complexity < 0.30 or a RV EDV < 220 ml.

In previous studies in Fallot patients late after initial surgical correction, repolarization heterogeneity was implicated as a potential mechanism for arrhythmias (6,21,22). In the current study, we used a dedicated computer program to enhance the reproducibility and accuracy of ECG analysis. This allowed concomitant calculation of electrocardiographic repolarization indices like the QRS-T angle, T-wave complexity, T-wave amplitude and T-wave area.

### **Spatial QRS-T angle**

The spatial QRS-T angle comprises properties of both depolarization and repolarization and has prognostic capabilities. Kardys et al. showed that a wide QRS-T angle predicted cardiac death in a general population of more than 6000 men and women older than 55 years<sup>7</sup>. After adjustment for cardiovascular risk factors, hazard ratios of abnormal QRS-T angles for sudden death were 4.6 (CI 2.5-8.5). Zabel et al. showed that the QRS-T angle contributed to the risk stratification of patients after myocardial infarction, independent of classical risk factors<sup>8</sup>. Other studies underscored the prognostic value of the spatial QRS-T angle and the orientation of the T axis<sup>9;23;24</sup>.

The large QRS-T spatial angle in our study is related to the right bundle branch block present in most Fallot patients. Their right ventricles are mostly activated by relatively slow myocardial cell-to-cell conduction instead of by the specialized conduction system. The differences in action potential duration that normally determine the order of repolarization, are exceeded by larger differences in repolarization time

introduced by the slow cell-to-cell depolarization. Subsequently, the areas that depolarize last also repolarize last. This similar order of de- and repolarization in combination with the opposed direction of the de- and repolarizing currents cause large differences in the orientation of the QRS and T vectors, *i.e.*, a wide QRS-T angle.

An increased QRS-T angle may also be caused by a disturbance in the distribution of myocardial action potential durations. Previous studies showed that increased wall stress and hypertrophy have a direct influence on action potential duration<sup>25;26</sup>. In dogs, volume overload led to eccentric hypertrophy, interventricular differences in action potential durations and an increased sensitivity to arrhythmogenic medication<sup>26</sup>.

Normal values for the QRS-T angle were defined as being smaller than  $105^{\circ}$ <sup>27</sup>. The QRS-T angle in our Fallot patients decreased from  $117 \pm 34^{\circ}$  to  $100 \pm 35^{\circ}$  after PVR, denoting a transition from a value outside the normal range to a smaller value within the normal range. We observed no severe arrhythmias in patients with a QRS-T angle  $< 100^{\circ}$ .

### QT dispersion

Previously, Gatzoulis et al. used QT dispersion to refine risk stratification of Fallot patients with a wide QRS complex<sup>6</sup>. All patients with clinically relevant arrhythmias appeared to have a QRS duration of more than 180 ms and a QT dispersion of more than 60 ms. In our patient group the combination of QRS duration and QT dispersion could not be assessed as only four patients had severe arrhythmias. However, we found no ventricular tachycardias in patients with QT dispersion  $< 60$  ms. Furthermore, our group of Fallot patients with large RVs had relatively high pre- and post-operative QT dispersion values. Surprisingly, we found no change in QT dispersion after PVR, despite the relatively large right ventricular volume reduction in most patients. This finding is in agreement with the study of Helbing et al. (28), who did not find a correlation between right ventricular volume and QT dispersion in a group of Fallot patients and normal subjects.

Initially, QT dispersion was proposed as a measure of local repolarization differences<sup>29</sup>. However, QT dispersion is strongly dependent on the orientation of the T vector, which represents the summed electromotive forces<sup>30</sup>. The QT interval is shortest in the ECG lead that is perpendicular to the orientation of the last part of the T vector. This shortest QT interval has a large influence on the magnitude of the QT dispersion, calculated as the longest minus the shortest QT interval in any lead.

Thus, QT dispersion depends on projections of the *global* T vector on the different lead vectors and does not necessarily represent *local* repolarization differences<sup>30</sup>.

### **T-wave complexity**

T-wave complexity has been shown to yield independent prognostic information in patients with cardiovascular disease<sup>31</sup>. In patients with arrhythmogenic right ventricular dysplasia, higher T-wave complexity is associated with ventricular arrhythmias<sup>32</sup>. Additionally, T-wave complexity is increased in patients with primary repolarization disturbances and can be used to discriminate these patients from healthy individuals<sup>10</sup>. We calculated T-wave complexity by means of singular value decomposition, which is an algebraic algorithm used to reconstruct the T waves of eight independent ECG leads (I, II, V1-6). If the T waves can be described by only the first few singular values, the T waves have a relatively simple shape and are similar to each other in the different leads. The more singular values are needed to accurately describe the T waves and thus contain a significant amount of information, the more complex the T waves. We observed a nonsignificant reduction in T-wave complexity in our relatively small study, which can be interpreted as a trend in the direction of a more normal repolarization. Additionally, patients with a T-wave complexity < 0.30 had no severe arrhythmias.

### **T-wave amplitude and area**

T-wave amplitude and area were related to repolarization heterogeneity in previous studies. In rabbit hearts, T-wave area was strongly correlated to repolarization heterogeneity as measured by 7 monophasic action potential electrodes<sup>33</sup>. T-wave amplitude and area were also related to heterogeneity, measured as the difference in repolarization time between the left and right ventricle in canine hearts<sup>12</sup>. Experiments in preparations of the left ventricular wall mimicked Long QT 1 syndrome and increased repolarization heterogeneity, which was reflected in an increased T-wave amplitude and area<sup>34</sup>. Mathematical simulation studies confirmed these experimental findings<sup>11,35</sup>.

In our Fallot patients we measured a decrease in T-wave amplitude and T-wave area after PVR, suggesting a decreased repolarization heterogeneity. The changes in T-wave area and amplitude were more explicit in leads V2 and V3 than in the other ECG leads (Figures 1 and 2). Leads V2 and V3 may display more electrical activity

from the right ventricle than the other standard ECG leads due to their proximity to the right ventricle<sup>36;37</sup> underscoring that the observed changes in T-wave amplitude and area were indeed related to changes in the right ventricle. The observed changes in T-wave amplitude and T-wave area suggest decreased repolarization heterogeneity in the right ventricle due to PVR.

### Arrhythmias

The patients with severe arrhythmias had a QRS duration longer than 160 ms. Gatzoulis et al. found that every Fallot patient with symptomatic ventricular arrhythmias had a QRS duration longer than 180 ms<sup>3</sup>. Our study suggests that this criterion should be lowered to ascertain identification of patients with ventricular arrhythmias. The patient who died suddenly had a QRS duration of 164 ms.

Our study was too small to combine electrocardiographic indices of the repolarization with the QRS duration to improve specificity. However, patients with either a QRS-T angle lower than  $100^\circ$ , a QT dispersion lower than 60 ms, a T-wave complexity lower than 0.30 or a RV EDV lower than 220 ml had no severe arrhythmias.

The observed changes in electrocardiographic indices of repolarization heterogeneity suggest a decreased repolarization heterogeneity. Repolarization heterogeneity may form the substrate for ventricular arrhythmias. Irregular repolarization sequences facilitate the formation of functional barriers, so that an adversely timed extrastimulus may initiate a re-entry arrhythmia<sup>5</sup>. Furthermore, we found that the spatial QRS-T angle, QT dispersion, T-wave complexity and T-wave area were linearly related to the average QRS duration. A previous study in Fallot patients after total surgical correction registered body surface maps that showed a high similarity between de- and repolarization patterns<sup>38</sup>. Hence, in our Fallot patients the depolarization process probably influenced the repolarization as well. We could ask ourselves what kind of repolarization heterogeneity is introduced by cell-to-cell depolarization of the right ventricle in our Fallot patients. Repolarization differences caused by and similar to a slowly, but smoothly progressing depolarization wavefront do not necessarily increase the susceptibility to arrhythmias. However, in volume overloaded ventricles, fibrosis and mechanically induced changes in conduction velocity may cause patchy, irregular repolarization sequences.

## **Conclusions**

Pulmonary valve replacement in Fallot patients with dilated right ventricles has a beneficial effect on electrocardiographic indices of repolarization heterogeneity. Normal repolarization indices are associated with the absence of severe ventricular arrhythmias.

## REFERENCES

- 1 Carvalho JS, Shinebourne EA, Busst C, Rigby ML, Redington AN. Exercise capacity after complete repair of tetralogy of Fallot: deleterious effects of residual pulmonary regurgitation. *Br Heart J* 1992;67:470-3.
- 2 Gatzoulis MA, Balaji S, Webber SA et al. Risk factors for arrhythmia and sudden cardiac death late after repair of tetralogy of Fallot: a multicentre study. *Lancet* 2000;356:975-81.
- 3 Gatzoulis MA, Till JA, Somerville J, Redington AN. Mechanoelectrical interaction in tetralogy of Fallot. QRS prolongation relates to right ventricular size and predicts malignant ventricular arrhythmias and sudden death. *Circulation* 1995;92:231-7.
- 4 Han J, Moe GK. Nonuniform recovery of excitability in ventricular muscle. *Circ Res* 1964;14:44-60.
- 5 Kuo CS, Munakata K, Reddy CP, Surawicz B. Characteristics and possible mechanism of ventricular arrhythmia dependent on the dispersion of action potential durations. *Circulation* 1983;67:1356-67.
- 6 Gatzoulis MA, Till JA, Redington AN. Depolarization-repolarization inhomogeneity after repair of tetralogy of Fallot. The substrate for malignant ventricular tachycardia? *Circulation* 1997;95:401-4.
- 7 Kardys I, Kors JA, van der Meer I, Hofman A, van der Kuip DA, Witteman JC. Spatial QRS-T angle predicts cardiac death in a general population. *Eur Heart J* 2003;24:1357-64.
- 8 Zabel M, Acar B, Klingenhöben T, Franz MR, Hohnloser SH, Malik M. Analysis of 12-lead T-wave morphology for risk stratification after myocardial infarction. *Circulation* 2000;102:1252-7.
- 9 de Torbal A, Kors JA, van Herpen G et al. The electrical T-axis and the spatial QRS-T angle are independent predictors of long-term mortality in patients admitted with acute ischemic chest pain. *Cardiology* 2004;101:199-207.
- 10 Priori SG, Mortara DW, Napolitano C et al. Evaluation of the spatial aspects of T-wave complexity in the long-QT syndrome. *Circulation* 1997;96:3006-12.
- 11 Hooft van Huysduynen B, Swenne CA, Draisma HH et al. Validation of ECG indices of ventricular repolarization heterogeneity: a computer simulation study. *J Cardiovasc Electrophysiol* 2005;16:1097-103.
- 12 van Opstal JM, Verduyn SC, Winckels SK et al. The JT-area indicates dispersion of repolarization in dogs with atrioventricular block. *J Interv Card Electrophysiol* 2002;6:113-20.
- 13 Hooft van Huysduynen B, van Straten A, Swenne CA et al. Reduction of QRS duration after pulmonary valve replacement in adult Fallot patients is related to reduction of right ventricular volume. *Eur Heart J* 2005;26:928-32.
- 14 Vliegen HW, van Straten A, de Roos A et al. Magnetic resonance imaging to assess the hemodynamic effects of pulmonary valve replacement in adults late after repair of tetralogy of fallot. *Circulation* 2002;106:1703-7.
- 15 Draisma HHM, Swenne CA, Van de Vooren H, Maan AC, Hooft van Huysduynen B, Van der Wall EE et al. LEADS: an interactive research oriented ECG/VCG analysis system. *Computers in Cardiology* In press.

- 16 Edenbrandt L, Pahlm O. Vectorcardiogram synthesized from a 12-lead ECG: superiority of the inverse Dower matrix. *J Electrocardiol* 1988;21:361-7.
- 17 Prineas RJ, Crow RS, Blackburn H. Intraventricular conduction defects. In: *The Minnesota code manual of electrocardiographic findings: standards and procedures for measurement and classification*. Boston, MA: Wright, 1982:111-30
- 18 Mirvis DM, Goldberger AL. Electrocardiography. In: Zipes DP, editor. *Braunwald's heart disease: a textbook of cardiovascular medicine*. 7th ed. Philadelphia, PA: Elsevier Saunders, 2005:117
- 19 Lay DC. Symmetric matrices and quadratic forms. In: *Linear algebra and its applications*. 2nd ed. Reading, MA: Addison-Wesley, 2003:441-486.
- 20 Benjamini and Hochberg. Controlling the false discovery rate-a practical and powerful approach to multiple testing. *J R Stat Soc Ser* 1995;B57:289-300
- 21 Berul CI, Hill SL, Geggel RL et al. Electrocardiographic markers of late sudden death risk in postoperative tetralogy of Fallot children. *J Cardiovasc Electrophysiol* 1997;8:1349-56.
- 22 Sarubbi B, Pacileo G, Ducceschi V et al. Arrhythmogenic substrate in young patients with repaired tetralogy of Fallot: role of an abnormal ventricular repolarization. *Int J Cardiol* 1999;72:73-82.
- 23 Kors JA, de Bruyne MC, Hoes AW et al. T axis as an indicator of risk of cardiac events in elderly people. *Lancet* 1998;352:601-5.
- 24 Rautaharju PM, Nelson JC, Kronmal RA et al. Usefulness of T-axis deviation as an independent risk indicator for incident cardiac events in older men and women free from coronary heart disease (the Cardiovascular Health Study). *Am J Cardiol* 2001;88:118-23.
- 25 Dean JW, Lab MJ. Arrhythmia in heart failure: role of mechanically induced changes in electrophysiology. *Lancet* 1989;1:1309-12.
- 26 Vos MA, De Groot SH, Verduyn SC et al. Enhanced susceptibility for acquired torsade de pointes arrhythmias in the dog with chronic, complete AV block is related to cardiac hypertrophy and electrical remodeling. *Circulation* 1998;98:1125-35.
- 27 Draper HW, Peffer CJ, Stallmann FW, Littmann D, Pipberger HV. The corrected orthogonal electrocardiogram and vectorcardiogram in 510 normal men (Frank lead system). *Circulation* 1964;30:853-64.
- 28 Helbing WA, Roest AA, Niezen RA et al. ECG predictors of ventricular arrhythmias and biventricular size and wall mass in tetralogy of Fallot with pulmonary regurgitation. *Heart* 2002;88:515-9.
- 29 Day CP, McComb JM, Campbell RW. QT dispersion: an indication of arrhythmia risk in patients with long QT intervals. *Br Heart J* 1990;63:342-4.
- 30 Kors JA, van Herpen G, van Bommel JH. QT dispersion as an attribute of T-loop morphology. *Circulation* 1999;99:1458-63.
- 31 Zabel M, Malik M, Hnatkova K et al. Analysis of T-wave morphology from the 12-lead electrocardiogram for prediction of long-term prognosis in male US veterans. *Circulation* 2002;105:1066-70.
- 32 De Ambroggi L, Aime E, Ceriotti C, Rovida M, Negroni S. Mapping of ventricular repolarization potentials in patients with arrhythmogenic right ventricular dysplasia: principal component analysis of the ST-T waves. *Circulation* 1997;96:4314-8.
- 33 Zabel M, Portnoy S, Franz MR. Electrocardiographic indexes of dispersion of



- ventricular repolarization: an isolated heart validation study. *J Am Coll Cardiol* 1995;25:746-52.
- 34 Shimizu W, Antzelevitch C. Cellular basis for the ECG features of the LQT1 form of the long-QT syndrome: effects of beta-adrenergic agonists and antagonists and sodium channel blockers on transmural dispersion of repolarization and torsade de pointes. *Circulation* 1998;98:2314-22.
- 35 di Bernardo D, Murray A. Explaining the T-wave shape in the ECG. *Nature* 2000;403:40.
- 36 Shimizu W, Aiba T, Kurita T, Kamakura S. Paradoxical abbreviation of repolarization in epicardium of the right ventricular outflow tract during augmentation of Brugada-type ST segment elevation. *J Cardiovasc Electrophysiol* 2001;12:1418-21.
- 37 Blomstrom-Lundqvist C, Hirsch I, Olsson SB, Edvardsson N. Quantitative analysis of the signal-averaged QRS in patients with arrhythmogenic right ventricular dysplasia. *Eur Heart J* 1988;9:301-12.
- 38 Liebman J, Rudy Y, Diaz P, Thomas CW, Plonsey R. The spectrum of right bundle branch block as manifested in electrocardiographic body surface potential maps. *J Electrocardiol* 1984;17:329-46.



