



Universiteit
Leiden
The Netherlands

Release characteristics of cardiac proteins after reversible or irreversible myocardial damage

Hessel, M.H.M.

Citation

Hessel, M. H. M. (2008, February 7). *Release characteristics of cardiac proteins after reversible or irreversible myocardial damage*. Retrieved from <https://hdl.handle.net/1887/12593>

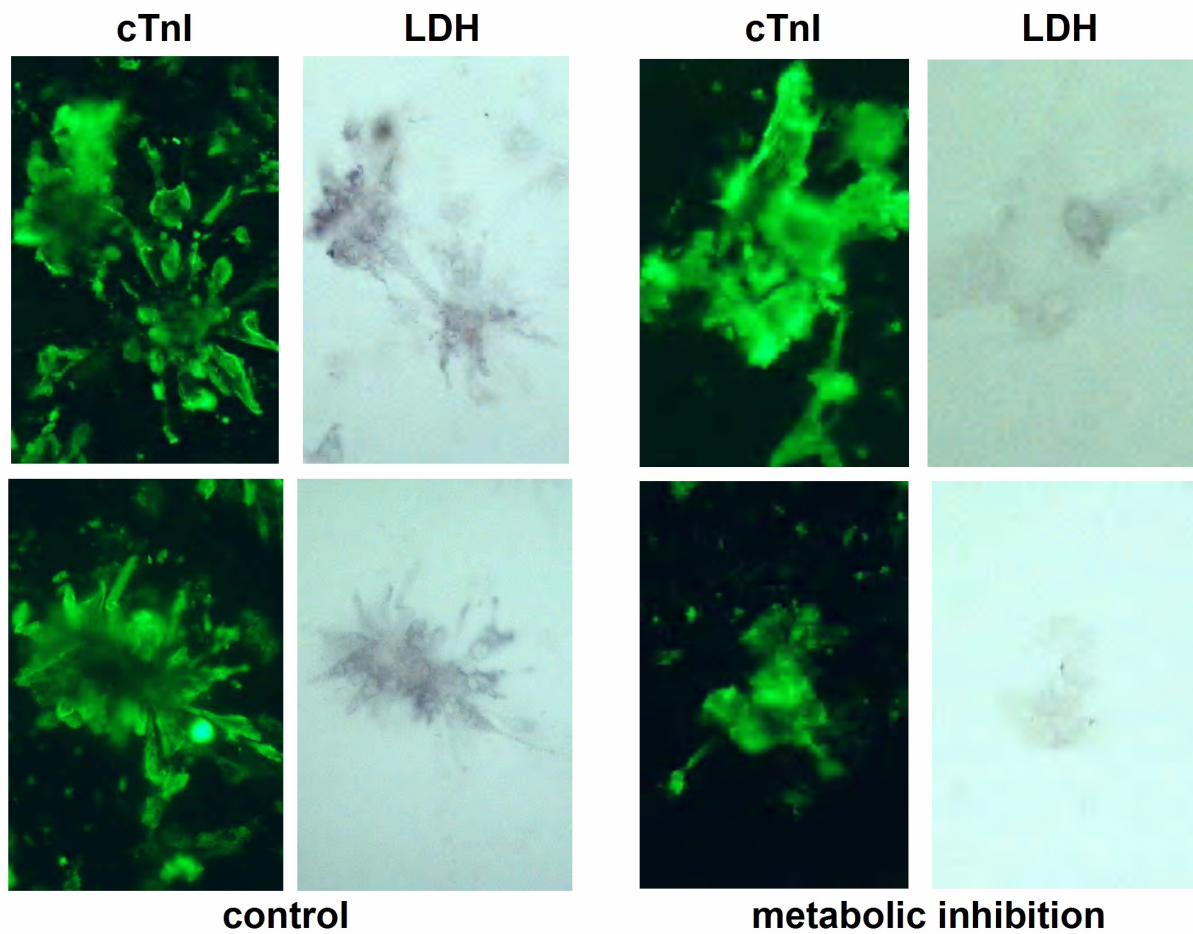
Version: Corrected Publisher's Version

License: [Licence agreement concerning inclusion of doctoral thesis in the Institutional Repository of the University of Leiden](#)

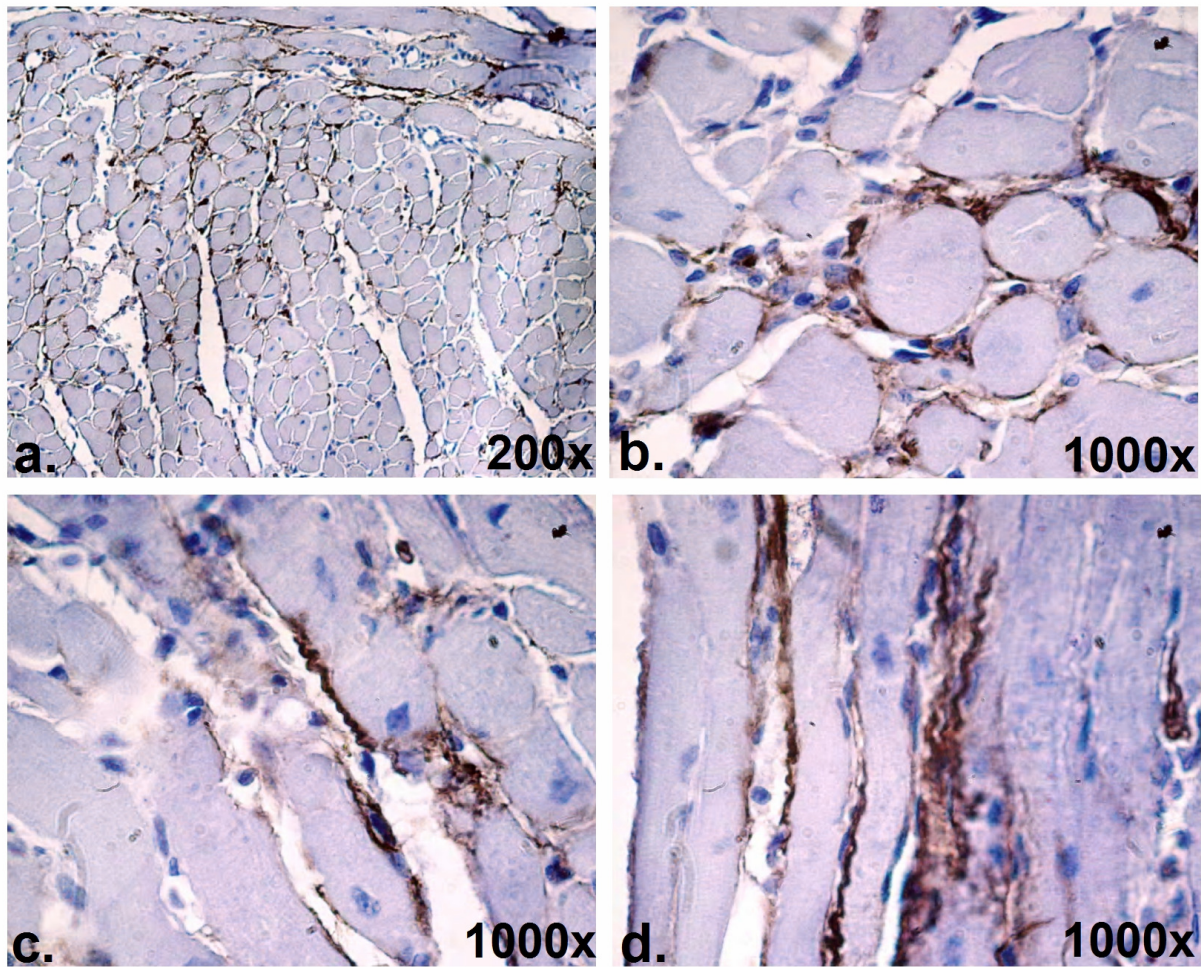
Downloaded from: <https://hdl.handle.net/1887/12593>

Note: To cite this publication please use the final published version (if applicable).

Full color figures



Fluorescence microscopy images (TnI) and light microscopic images (LDH) of cardiomyocyte cultures that were incubated without metabolic inhibitors for 150 min (control, LEFT), and with metabolic inhibitors (5 mM NaCN and 10 mM DOG with 2.5 mM extracellular Ca^{2+} concentration) for 150 min (RIGHT). The control cells are positive for TnI (green) and LDH (blue), whereas the metabolically inhibited cells are positive for TnI but stain faintly for LDH. (**Chapter 2, figure 4.**)



Distribution of myocardial TNC in the RV of MCT80 rats by immunohistochemistry (a) overview of RV tissue, 200x, (b) transverse section of RV tissue, 1000x, (c and d) longitudinal sections of RV tissue, 1000x. (Chapter 7, figure 3).

