



Universiteit
Leiden
The Netherlands

Using novel imaging approaches in affective disorders : beyond current models

Pannekoek, J.N.

Citation

Pannekoek, J. N. (2015, March 5). *Using novel imaging approaches in affective disorders : beyond current models*. Retrieved from <https://hdl.handle.net/1887/32078>

Version: Corrected Publisher's Version

License: [Licence agreement concerning inclusion of doctoral thesis in the Institutional Repository of the University of Leiden](#)

Downloaded from: <https://hdl.handle.net/1887/32078>

Note: To cite this publication please use the final published version (if applicable).

Cover Page



Universiteit Leiden



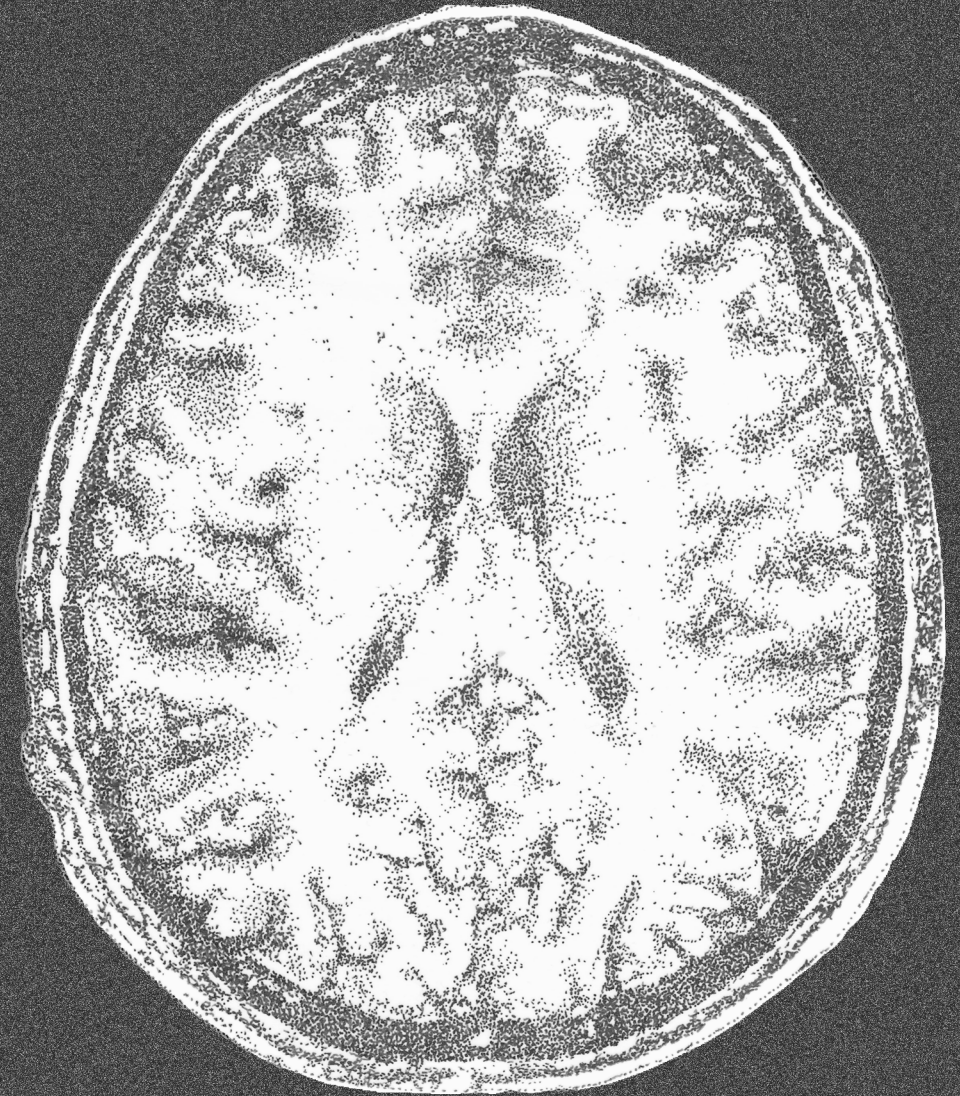
The handle <http://hdl.handle.net/1887/32078> holds various files of this Leiden University dissertation

Author: Pannekoek, Nienke

Title: Using novel imaging approaches in affective disorders : beyond current models

Issue Date: 2015-03-05

USING NOVEL IMAGING
APPROACHES IN AFFECTIVE DISORDERS:
BEYOND CURRENT MODELS



JUSTINE NIENKE PANNEKOEK

USING NOVEL IMAGING APPROACHES IN AFFECTIVE DISORDERS:
BEYOND CURRENT MODELS

J.N. PANNEKOEK