



Universiteit  
Leiden  
The Netherlands

## **Bone marrow stromal cell : mediated neuroprotection for spinal cord repair**

Ritfeld, G.J.

### **Citation**

Ritfeld, G. J. (2014, February 27). *Bone marrow stromal cell : mediated neuroprotection for spinal cord repair*. Department of Neurology, Faculty of Medicine, Leiden University Medical Center (LUMC), Leiden University. Retrieved from <https://hdl.handle.net/1887/24265>

Version: Corrected Publisher's Version

License: [Licence agreement concerning inclusion of doctoral thesis in the Institutional Repository of the University of Leiden](#)

Downloaded from: <https://hdl.handle.net/1887/24265>

**Note:** To cite this publication please use the final published version (if applicable).

Cover Page



Universiteit Leiden



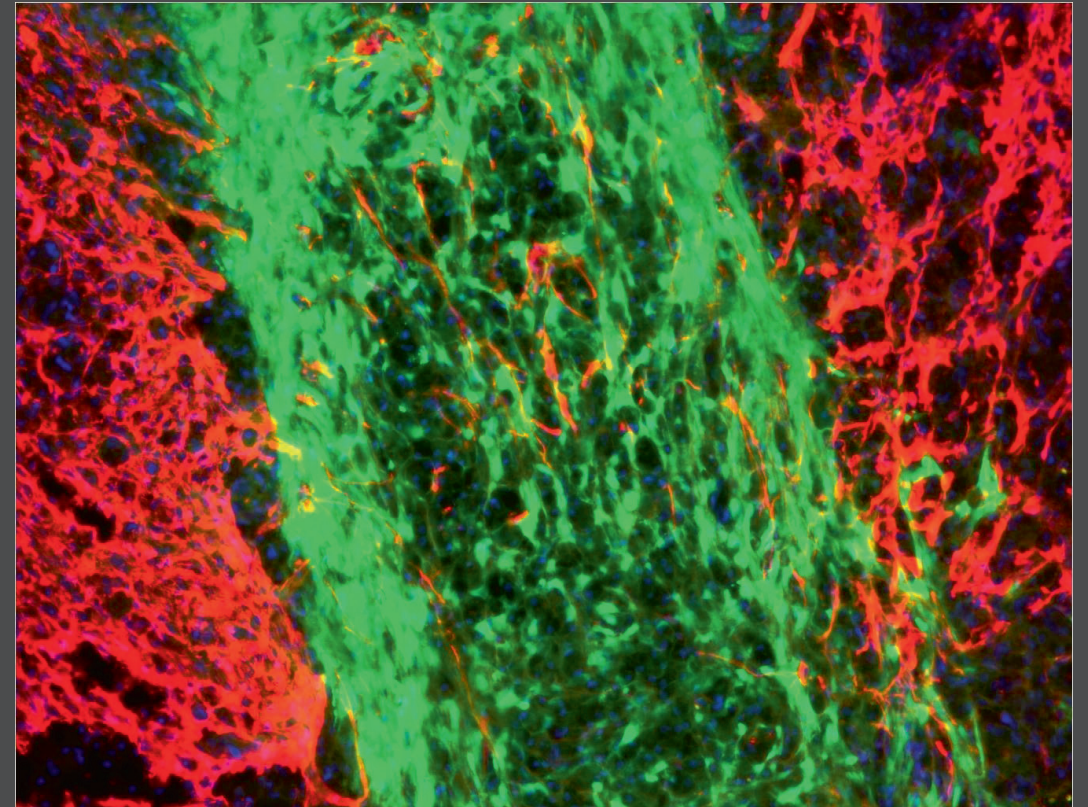
The handle <http://hdl.handle.net/1887/24265> holds various files of this Leiden University dissertation.

**Author:** Ritfeld, Gaby Jane

**Title:** Bone marrow stromal cell : mediated neuroprotection for spinal cord repair

**Issue Date:** 2014-02-27

# Bone Marrow Stromal Cell - Mediated Neuroprotection for Spinal Cord Repair



Gaby J. Riffeld

Bone Marrow Stromal Cell - Mediated Neuroprotection for Spinal Cord Repair

G. J. Riffeld