

Cover Page



Universiteit Leiden

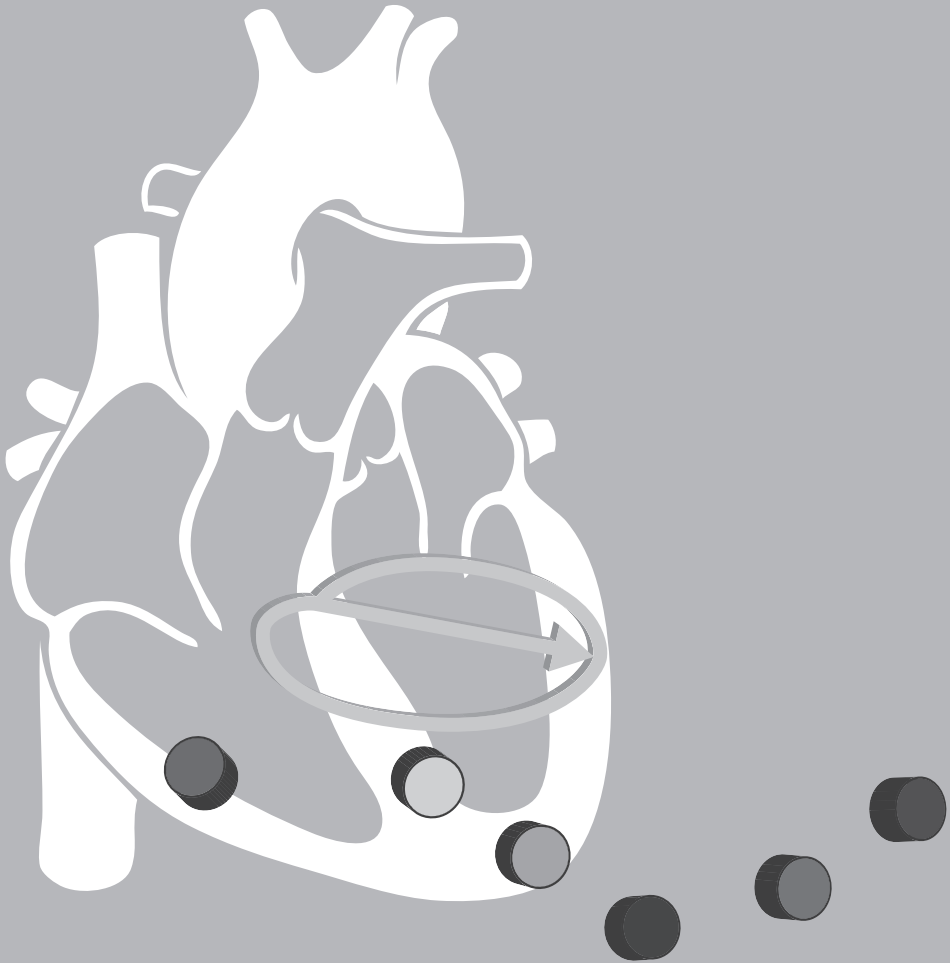


The handle <http://hdl.handle.net/1887/37621> holds various files of this Leiden University dissertation

Author: Sum-Che Man

Title: Vectorcardiographic diagnostic & prognostic information derived from the 12-lead electrocardiogram

Issue Date: 2016-02-11



Chapter 9

T-Wave alternans ranking: striking disagreement between two vectorcardiographic measures of repolarization heterogeneity

Sum-Che Man, Arie C. Maan, Martin J. Schalij, Ernst E. van der Wall, Cees A. Swenne

Comput Cardiol 2008; 35: 525-528

Abstract

Background

In an attempt to study the importance of T-wave feature selection for T-wave alternans (TWA) analysis, we compared the alternans in two vectorcardiographic variables: maximal T-loop vector (MaxT) and the T-loop vector integral (Ti).

Methods

We analyzed TWA in the 72 standard 12-lead ECGs comprised in the Physionet TWA Challenge Database with our research ECG/VCG processing program LEADS. We computed TWA by taking the absolute differences of the even and odd averaged beat values of Ti and MaxT (MaxT-TWA and Ti-TWA); also percentual alternans (%MaxT-TWA and %Ti-TWA) was computed. Finally, we computed both the Pearson and Kendall tau-b correlation coefficients between the MaxT-TWA and Ti-TWA, and between %MaxT-TWA and %Ti-TWA.

Results

All correlation coefficients differed significantly ($P < 0.01$) from zero, but were relatively low ($R = 0.333-0.663$).

Conclusion

We conclude that T-wave features contain only in part common information; the selection of the T-wave feature in which TWA is computed deserves more attention.

Introduction

Since the first report of (visible) T-wave alternans (TWA) by Hering in 1908¹, this phenomenon was observed in various patient populations²⁻⁵. It became apparent that visible TWA was a harbinger of serious arrhythmias². Adam *et al.* found that invisible microvolt TWA in patients was related to visible TWA, and thus a promising tool for identifying high risk patients for ventricular arrhythmias⁶. Subsequently, multiple clinical/experimental studies confirmed the relevance of microvolt TWA as a marker of vulnerability to ventricular arrhythmias⁶⁻¹². The electrocardiographic phenomenon of TWA is caused by alternans in cellular repolarization properties, where lower alternans amplitudes may be caused by generalized fluctuations in the heart, while larger alternans amplitudes are possibly caused by increased and alternating contrasts in regional (*e.g.*, apical-basal) repolarization properties¹³.

In developing microvolt TWA analysis algorithms, much attention has been spent to the methods needed to reliably extract the every-other-beat alternation in the selected T-wave feature amidst fluctuations with other periodicity and amidst noise. Amongst others, spectral methods, complex demodulation, correlation, Karhunen-Loève transform, Capon filtering, periodicity transform, statistical tests, moving average, and Laplacian Likelihood Ratio methods are used¹⁴.

Relatively less research was done to the T-wave feature in which the alternans should be measured. In most studies, the utilized T-wave feature (*e.g.*, normalized aggregated TWA energy per sample¹⁵, (un)normalized aggregated T-wave amplitude difference per sample^{11;16}, the T-wave area alternans per 10 ms bin¹⁷, and the maximal absolute difference within the ST-T region¹⁸) is presented without explicit motivation. Such motivation could be found in the linkage of the T-wave feature to the underlying repolarization alternans phenomenon at the cellular level.

We hypothesized that the selection of a T-wave feature is essential for the relative position of a given subject when ECGs of a group of persons are ranked according to their TWA magnitude. When this view is correct, the selected T-wave feature is essential for the value of TWA analysis for individual risk assessment. To address our hypothesis, we compared the alternans in the T-loop vector integral and in the maximal T-loop vector magnitude. Computer simulations and animal studies

have shown that these vectorcardiographic variables are indexes for repolarization heterogeneity^{19;20}.

Methods

Study population

We analyzed the 72 standard 12-lead ECGs in the PhysioNet/Computers in Cardiology Challenge 2008 database (the remaining 28 recordings had 2 or 3 unspecified leads only, which rendered them unsuitable for vectorcardiographic analysis). The 72 ECGs recordings were sampled at 500 Hz and had a 16 bit resolution over a ± 32 mV range. The ECGs were recorded from patients with transient ischemia, ventricular tachyarrhythmias, myocardial infarctions, and other risk factors for sudden cardiac death, as well as in healthy controls. Also, synthetic cases were added with calibrated amounts of T-wave alternans. Whether or not the ECG was real or synthesized and what was the individual diagnosis was blinded. Each record was approximately two minutes in duration.

ECG processing

We analyzed the first 30 seconds of each ECG recordings with our research ECG/VCG processing program LEADS (Leiden ECG Analysis & Decomposition Software) [21]. Based on morphology comparison, interval criteria and noise estimation techniques, LEADS makes a selection of beats for subsequent averaging, rejecting beats of ectopic origin and rejecting noise beats. For the purpose of TWA analysis, LEADS processed all recordings twice (first the odd beats and then the even beats in the selection, see Figures 1 and 2).

After averaging, LEADS synthesizes, from the averaged beat (Figure 2), a vectorcardiogram (VCG, Figures 3 and 4) by applying the inverse Dower matrix²². LEADS computes multiple variables in the averaged beat, among which are the T-loop vector integral (T_i , in mV·ms) and the maximal T-loop vector magnitude ($MaxT$, in μ V). For each ECG, the absolute differences between the “odd” and “even” values of T_i and of $MaxT$ were taken as T_i -TWA and as $MaxT$ -TWA, respectively. We also computed the percentual alternans, % T_i -TWA and % $MaxT$ -TWA, by dividing T_i -TWA

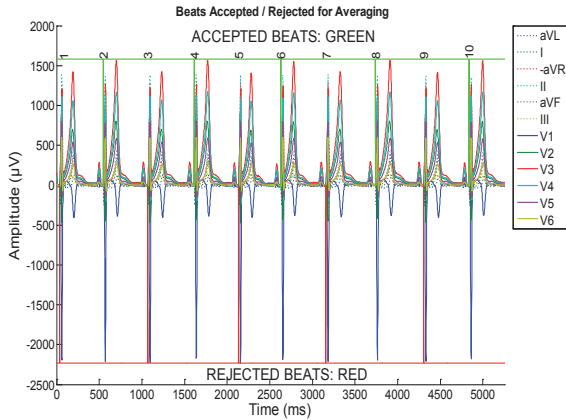


FIGURE 1. Beat selection (subject #34). Here, even beats are selected (**green**) and odd beats are rejected (**red**) for subsequent averaging.

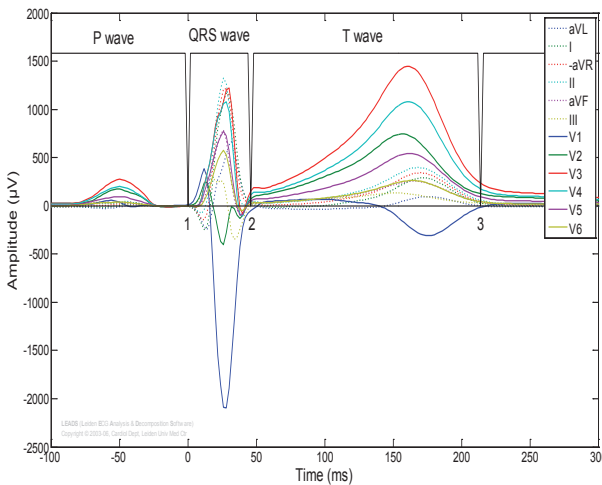


FIGURE 2. Averaged even beat (subject #34) with automatically determined landmarks in time (1: onset QRS, 2: J point (QRS offset), and 3: T offset).

and MaxT-TWA by the average of the T-loop vector integral, and by the average of the maximal T-loop vector of the even and odd beats, respectively.

Statistics

Statistical analysis was done with the Statistical Package for the Social Sciences Program (SPSS version 14.0, Chicago, Illinois). Data were expressed as mean \pm SD and range. Both Pearson and Kendall tau-b correlation coefficients were computed between Ti-TWA and MaxT-TWA and between %Ti-TWA and %MaxT-TWA. P-values <0.05 were considered significant.

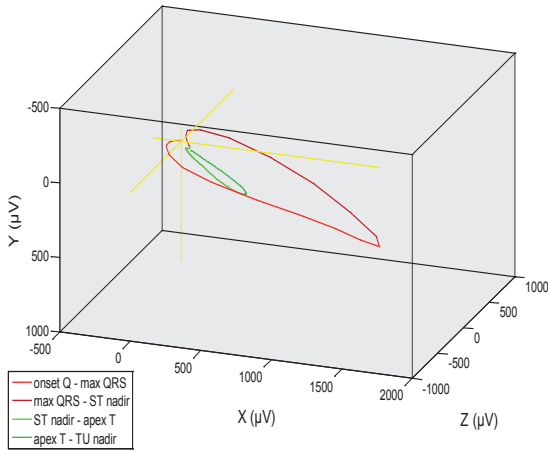


FIGURE 3. Vectorcardiogram of the even averaged beat of subject #34. **Red:** QRS-loop; **green:** T-loop.

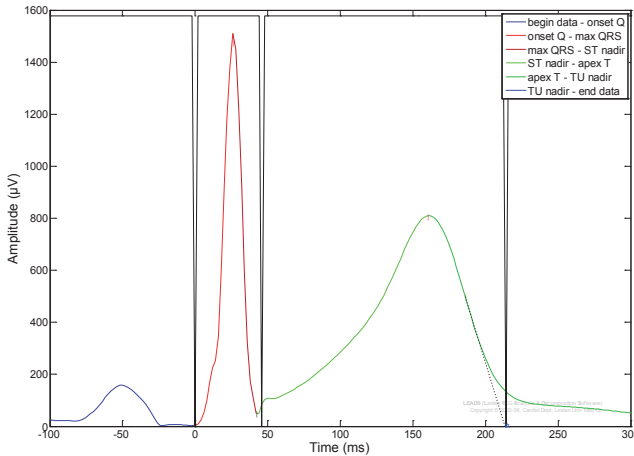


FIGURE 4. Vector magnitude of the even averaged beat of subject #34 with onset/offset QRS and offset T.

Results

All 72 ECGs were successfully processed by LEADS. The descriptive statistics of MaxT-TWA, Ti-TWA, %MaxT-TWA and %Ti-TWA are given in Table 1. Pearson's correlation coefficients between MaxT-TWA and Ti-TWA (Figure 5) and between %MaxT-TWA and %Ti-TWA (Figure 6) were 0.634 and 0.663, respectively. Both correlations differed significantly ($P < 0.01$) from zero.

The Kendall tau-b correlation coefficients between MaxT-TWA and Ti-TWA and between %MaxT-TWA and %Ti-TWA were 0.333 and 0.422, respectively. Both correlations differed significantly ($P < 0.01$) from zero.

TABLE 1. Descriptive statistics of the TWA variables.

Variable	Mean	SD	Min	Max
MaxT-TWA (μV)	14.73	17.94	0.07	80.25
Ti-TWA (mV \cdot ms)	1.95	2.77	0.04	16.26
%MaxT-TWA	2.08	2.48	0.01	10.36
%Ti-TWA	2.77	3.59	0.11	14.66

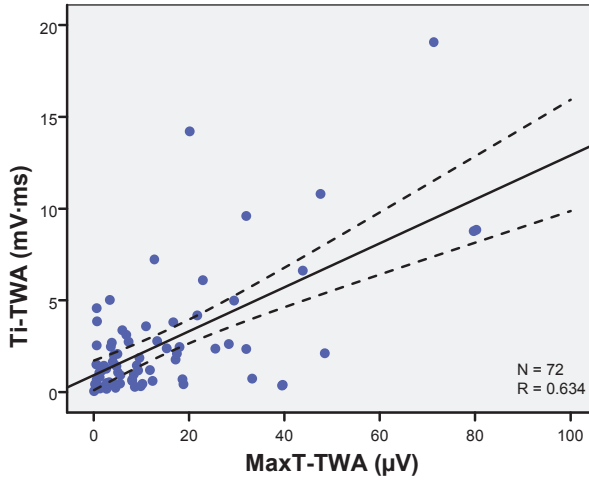


FIGURE 5. Scatterplot of Ti-TWA and MaxT-TWA. Continuous and dashed lines: linear least-squares regression line with 95% confidence intervals. R= Pearson's correlation coefficient.

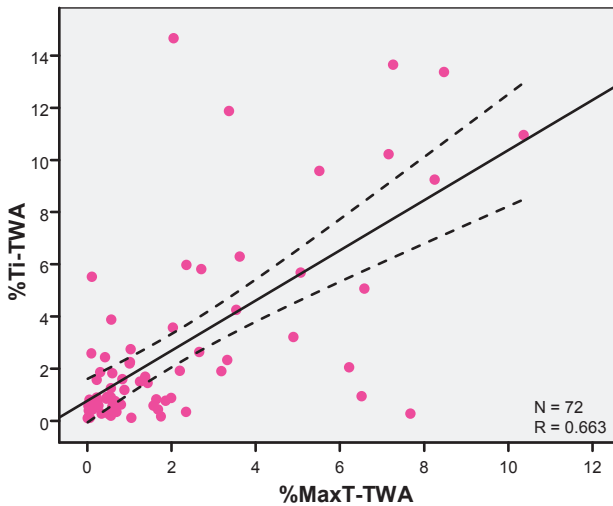


FIGURE 6. Scatterplot of %Ti-TWA and %MaxT-TWA. See also legend of Figure 4.

Discussion

In our study, we demonstrated that two T-wave features related to heterogeneity of the repolarization, yield TWA results that are significantly linearly related. However, the correlation coefficients are relatively low: only less than half of the variance in one variable can be explained by the other variable.

It can be seen in Figures 5 and 6 that a relatively large part of the subjects in this database has TWA values that are small and not too much different from each other. This means that the ranking order in this population will be extremely sensitive for small measurement errors. This explains why the Kendall tau-b correlation coefficients are much lower than the Pearson correlation coefficients. It is, therefore, possibly not reasonable to draw conclusions as to differences in ranking in this study population.

It appears from our data that even when the linear correlation coefficients are taken, the correlations between MaxT-TWA and Ti-TWA and between %MaxT-TWA and %Ti-TWA are significant, but relatively low, and less than half of the variability in one variable is explained by the variability in the other variable. Obviously, these variables yield strongly different TWA assessments, and this must have considerable impact on the predictive value of these variables in a clinical population at risk. Either the statistical performance of one variable will be much lower than the other, or the variables may have comparable performance but identify another type of high-risk patient. As our data show, TWA normalization (computation of percentual TWA) does not help to resolve this issue.

Conclusion

In conclusion, T-wave features contain only in part common information; the selection of the T-wave feature in which TWA is computed deserves more attention.

References

1. Hering H. Das Wesen des Herzalternans. *Münchener med Wochenschr* 1908;4:1417-21.
2. Kalter H, Schwartz M. Electrical alternans. *N Y State J Med* 1948;1:1164-6.
3. Kleinfeld MJ, Rozanski JJ. Alternans of the ST segment in Prinzmetal's angina. *Circulation* 1977;55:574-7.
4. Roden DM, Lazzara R, Rosen M, Schwartz PJ, Towbin J, Vincent GM. Multiple mechanisms in the long-QT syndrome. Current knowledge, gaps, and future directions. The SADS Foundation Task Force on LQTS. *Circulation* 1996;94:1996-2012.
5. Wellens HJ. Isolated electrical alternans of the T wave. *Chest* 1972;62:319-21.
6. Adam DR, Akselrod S, Cohen RJ. Estimation of ventricular vulnerability to fibrillation through T-wave time series analysis. *Computing in Cardiology* 1981;8:307-10.
7. Chow T, Kereiakes DJ, Bartone C, Booth T, Schloss EJ, Waller T, et al. Prognostic utility of microvolt T-wave alternans in risk stratification of patients with ischemic cardiomyopathy. *J Am Coll Cardiol* 2006;47:1820-7.
8. El-Menyar A, Asaad N. T-wave alternans and sudden cardiac death. *Crit Pathw Cardiol* 2008;7:21-8.
9. Estes NA, III, Michaud G, Zipes DP, El-Sherif N, Venditti FJ, Rosenbaum DS, et al. Electrical alternans during rest and exercise as predictors of vulnerability to ventricular arrhythmias. *Am J Cardiol* 1997;80:1314-8.
10. Raeder EA, Rosenbaum DS, Bhasin R, Cohen RJ. Alternating morphology of the QRST complex preceding sudden death. *N Engl J Med* 1992;326:271-2.
11. Rosenbaum DS, Jackson LE, Smith JM, Garan H, Ruskin JN, Cohen RJ. Electrical alternans and vulnerability to ventricular arrhythmias. *N Engl J Med* 1994;330:235-41.
12. Verrier RL, Nearing BD, La Rovere MT, Pinna GD, Mittleman MA, Bigger JT, Jr., et al. Ambulatory electrocardiogram-based tracking of T wave alternans in postmyocardial infarction patients to assess risk of cardiac arrest or arrhythmic death. *J Cardiovasc Electrophysiol* 2003;14:705-11.
13. Wilson LD, Rosenbaum DS. Mechanisms of arrhythmogenic cardiac alternans. *Europace* 2007;9 Suppl 6:vi77-82.:vi77-vi82.
14. Martinez JP, Olmos S. Methodological principles of T wave alternans analysis: a unified framework. *IEEE Trans Biomed Eng* 2005;52:599-613.
15. Adam DR, Smith JM, Akselrod S, Nyberg S, Powell AO, Cohen RJ. Fluctuations in T-wave morphology and susceptibility to ventricular fibrillation. *J Electrocardiol* 1984;17:209-18.
16. Smith JM, Clancy EA, Valeri CR, Ruskin JN, Cohen RJ. Electrical alternans and cardiac electrical instability. *Circulation* 1988;77:110-21.
17. Nearing BD, Verrier RL. Personal computer system for tracking cardiac vulnerability by complex demodulation of the T wave. *J Appl Physiol* 1993;74:2606-12.
18. Nearing BD, Verrier RL. Modified moving average analysis of T-wave alternans to predict ventricular fibrillation with high accuracy. *J Appl Physiol* 2002;92:541-9.
19. Van Huysduynen BH, Swenne CA, Draisma HH, Antoni ML, Van D, V, van der Wall EE, et al. Validation of ECG indices of ventricular repolarization heterogeneity: a computer simulation study. *J Cardiovasc Electrophysiol* 2005;16:1097-103.

20. Zabel M, Portnoy S, Franz MR. Electrocardiographic indexes of dispersion of ventricular repolarization: an isolated heart validation study. *J Am Coll Cardiol* 1995;25:746-52.
21. Draisma HH, Swenne CA, van de Vooren H, Maan AC, Hooft van Huysduynen B, van der Wall EE, *et al.* LEADS: An interactive research oriented ECG/VCG analysis system. *Computing in Cardiology* 2005;32:515-8.
22. Dower GE. The ECGD: a derivation of the ECG from VCG leads. *J Electrocardiol* 1984;17:189-91.

