



Universiteit  
Leiden  
The Netherlands

## Translational pharmacology of dopamine receptor agonists and antagonists : prolactin and oxytocin as biomarkers

Stevens, J.

### Citation

Stevens, J. (2011, September 22). *Translational pharmacology of dopamine receptor agonists and antagonists : prolactin and oxytocin as biomarkers*.

Retrieved from <https://hdl.handle.net/1887/17851>

Version: Corrected Publisher's Version

License: [Licence agreement concerning inclusion of doctoral thesis in the Institutional Repository of the University of Leiden](#)

Downloaded from: <https://hdl.handle.net/1887/17851>

**Note:** To cite this publication please use the final published version (if applicable).

---

## **A new minimal-stress freely-moving rat model for preclinical studies on intranasal administration of CNS drugs** *Pharm Res* (2009) 26:1911-1917

---

J. Stevens<sup>1</sup>, E. Suidgeest<sup>1</sup>, P. H. van der Graaf<sup>2</sup>, M. Danhof<sup>1</sup>,  
E. C. M. de Lange<sup>1</sup>.

<sup>1</sup> *Division of Pharmacology, LACDR, Leiden University, Leiden, The Netherlands.*

<sup>2</sup> *Pfizer, Pharmacometrics/Global Clinical Pharmacology, Sandwich, Kent, England.*

---

### **ABSTRACT**

**Purpose.** To develop a new minimal-stress model for intranasal administration in freely moving rats and to evaluate in this model the brain distribution of acetaminophen following intranasal versus intravenous administration.

**Methods.** Male Wistar rats received one intranasal cannula, an intracerebral microdialysis probe, and two blood cannulas for drug administration and serial blood sampling respectively. To evaluate this novel model, the following experiments were conducted; 1) Evans Blue was administered to verify the selectivity of intranasal exposure. 2) During a 1 minute infusion 10, 20, or 40  $\mu$ l saline was administered intranasally or 250  $\mu$ l intravenously. Corticosterone plasma concentrations over time were compared as biomarkers for stress. 3) 200  $\mu$ g of the model drug acetaminophen was given in identical setup and plasma, and brain pharmacokinetics were determined.

**Results.** In 96% of the rats, only the targeted nasal cavity was deeply colored. Corticosterone plasma concentrations were not influenced, neither by route nor volume of administration. Pharmacokinetics of acetaminophen were identical after intravenous and intranasal administration, although the  $C_{max}$  in microdialysates was reached a little earlier following intravenous administration.

**Conclusion.** A new minimal-stress model for intranasal administration in freely moving rats has been successfully developed and allows direct comparison with intravenous administration.

## INTRODUCTION

Targeting the central nervous system (CNS) by intranasal delivery is a promising alternative for oral or parenteral administration, and is investigated to directly target the brain, thereby increasing CNS target site bioavailability and the efficacy of CNS drugs (American Academy of Pediatrics: Committee on Drugs, 1997; Graff and Pollack, 2005a; Jansson and Bjork, 2002). Little is known however on the distribution of CNS drugs into the target site, i.e. the extracellular fluid (ECF) surrounding the pharmacologic receptors in brain tissue, following intranasal administration.

Current pharmacokinetic-pharmacodynamic (PK–PD) studies after intranasal administration in small laboratory animals are performed with anesthetized animals, whether or not in combination with complete isolation of the nasal cavity and a cannulated trachea to aid breathing (Veronesi, et al., 2007; Dahlin, et al., 2001; Dufes, et al., 2003; Van den Berg, et al., 2004). Other research is based upon restrained animals (Shi, et al., 2005). All methods currently used have major influence on physiology (i.e. blood flow, nasal immunology, mucociliary clearance, nasal cycle, airflow dynamics, and stress), which all play important roles in the PK and/or PD of compounds (Raphael, et al., 1996b; Schipper, et al., 1991; Selwyn, et al., 1996; Raphael, et al., 1996a; Raphael and Butt, 1997; Schindler, et al., 1996; Lennox, et al., 1996; Sapolsky, et al., 2000; Ugwoke, et al., 2001). Therefore, this methodology complicates quantification of PK–PD endpoints and consequently the extrapolation to the *in vivo* human situation.

To meet the demands for animal PK/biomarker models and nasal administration techniques, which allow better interpretation and translation of PK–PD parameters from animal to man, a new animal model is needed that allows drug administration under minimal stress conditions in freely moving animals.

The objective of this study was to develop and validate a new preclinical, refined minimal stress animal model, in which we can administer compounds intranasally and intravenously, while blood- and brain ECF samples can be taken over time, to obtain PK–PD parameters in plasma and brain of freely moving animals. After comparing the size of nasal cavities, the highly vascular olfactory epithelium ratios, and cost-considerations of eight different species, as described by Ugwoke *et al.*, (Ugwoke, et al., 2001), we focused on the rat as animal of choice. An intranasal cannula was manufactured and implanted together with an intracerebral microdialysis probe. Also, the animals received two blood cannulas for drug administration and serial blood

sampling respectively. The intranasal site of administration needed to be substantiated by a staining study. Through corticosterone measurements and comparison with literature, any stress effects during our experimental- and administration techniques had to be excluded (Cano, et al., 2008). Then, our model had to be validated, which was done by the administration of a model compound and comparing the pharmacokinetics between the groups. Acetaminophen was used for its linear plasma and blood-brain barrier (BBB) transport kinetics (De Lange, et al., 1994; Schaiquevich, et al., 2004; Kandimalla and Donovan, 2005; Graff and Pollack, 2005b; Van Bree, et al., 1989). P-glycoprotein (P-gp) efflux did not have to be considered since acetaminophen is no P-gp substrate (Schaiquevich, et al., 2004; Kandimalla and Donovan, 2005; Graff and Pollack, 2005b). To explain concentration-time profiles and include both intraindividual and interindividual variability, pharmacokinetic modeling was used to calculate population parameter estimates of blood- and brain PK.

## MATERIALS AND METHODS

### ■ Surgery and Methods

All animal procedures were performed in accordance with Dutch laws on animal experimentation. The study protocol was approved by the Animal Ethics Committee of Leiden University (UDEC nr. 6023 and 6132). Male Wistar WU rats (245 ± 18 g, Charles River, The Netherlands), n = 89, were housed in groups for 7–13 days (Animal Facilities, Gorlaeus Laboratoria, Leiden, The Netherlands), under standard environmental conditions (ambient temperature 21°C; humidity 60%; 12/12 h light, background noise, daily handled), with *ad libitum* access to food (Laboratory chow, Hope Farms, Woerden, The Netherlands) and acidified water. Between surgery and experiments, the animals were kept individually in Makrolon type three cages for 7 days to recover from the surgical procedures.

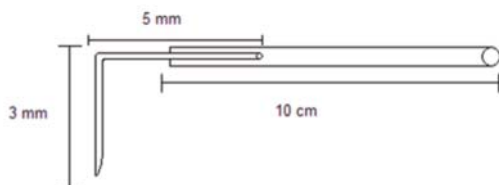
All surgical procedures were performed under complete anesthesia with subcutaneous administration of 0.1 ml/100 g Ketanest (ketamine base 25 mg/ml, Pfizer B.V., Capelle a/d IJssel, The Netherlands), and 0.01–0.017 ml/100 g Domitor (medetomidine hydrochloride 1 mg/ml, Pfizer Animal Health B.V. Capelle a/d IJssel, The Netherlands). Body temperature was maintained at 37°C by an electric heating pad. All cannulas were disinfected with 0.1% benzalkoniumchloride.

The animals were chronically instrumented with a CMA/ 12 microdialysis guide (Aurora Borealis Control, Schoonebeek, The Netherlands) in the olfactory bulb. The guide was inserted at 53° from the dorsoventral axis (towards posterior) parallel to the sagittal plane, at the coordinates AP –2.5 mm,

L -0.9 mm, V -6.4 mm from bregma. The intranasal probe was manufactured (Figure 1) by bending the sawn off tip of a 27 gauge needle (90°) and glueing the blunt end to 10 cm tubing (Portex Fine Bore polythene tubing, Smiths Industries, Kent, England). With a 1.0 mm drill, a hole was drilled through the nasal bone (AP 12 mm and L -0.5 mm), the metal tip was pressed into the hole and attached with histo-acryl (B. Braun Medical B.V., Oss, The Netherlands). The nasal cannula was tunneled subcutaneously to the back of the head. The end was melted shut to prevent infection. Consequently, the animals received two cannulas. To obtain blood samples, 3 cm of ID 0.28 mm cannula (SIMS Portex LTD, England) was inserted in the femoral artery, connected to 16 cm x 0.58 mm internal diameter (ID) cannula (Portex Fine Bore polythene tubing Smiths Industries, Kent, England). For drug administration, 4 cm of ID 0.58 mm cannula was inserted in the femoral vein, and 16 cm of ID 0.58 mm cannula was, similar to the sampling cannula, led subcutaneously to the back of the head where it was fixated with a rubber ring. After the surgery the animals received 0.03 ml Temgesic® intramuscular (Schering-Plough, The Netherlands) and 0.3 ml Ampicillin® (Alfasan B.V. Woerden) subcutaneously. After 6 days the guide was replaced by the microdialysis probe (CMA/12, 4 mm Polycarbonate membrane, cut-off 20 kD) at a pre-experiment interval of 24±1 h.

**Figure 1** Schematic representation of the intranasal cannula.

The 0.28 mm internal diameter, and 0.61 mm outer diameter tubing is glued to the bended (90°), sawn off tip of a 27 gauge needle.



In the corticosterone study, a control group of seven rats received 500 µl intravenously administered saline (B. Braun Melsungen AG, Melsungen, Germany) during a 1 minute infusion with an automated pump (Harvard apparatus 22, model 55-2222, Holliston, MA, USA). The experimental groups received 10, 20, or 40 µl of saline intranasally (n = 8, 10, and 9 respectively). Blood samples of 200 µl were taken from the arterial cannula at t = 0 (blank), 5, 10, 20, 35, 60, 90, 120, 150, and 180 min, shaken in heparin (10 IE) coated eppendorf cups (Sarstedt, Nümbrecht, Germany), and tempo-

rarily stored on ice. After the experiment the samples were centrifuged for 15 minutes at 5000 rpm and stored at  $-20^{\circ}\text{C}$ .

Using the aforementioned automated pump, in the acetaminophen study the control group received a dose of 200  $\mu\text{g}$  acetaminophen (Leiden University Medical Center Pharmacy, Leiden, The Netherlands) in 250  $\mu\text{l}$  saline intravenously in 30 seconds. In the experimental groups, 200  $\mu\text{g}$  acetaminophen in 20, 30, or 40  $\mu\text{l}$  saline was administered intranasally during a 1 minute infusion. Start and duration of infusion was corrected for internal volume of the tubing so that infusion started at  $t = 0$  min. Blood samples of 200  $\mu\text{l}$  were taken from the arterial cannula at  $t = 0$  (blank), 5, 10, 20, 35, 60, 90, 120, 150, and 180 minutes, and temporarily stored in heparin (10 IE) coated eppendorf cups on ice.

After the experiment the samples were centrifuged for 15 minutes at 5000 rpm and stored at  $-20^{\circ}\text{C}$ .

Microdialysis perfusion fluid (PF) was prepared (Moghaddam and Bunney, 1989), consisting of phosphate buffer (2 mM, pH 7.4), containing 145 mM sodium, 2.7 mM potassium, 1.2 mM calcium, 1.0 mM magnesium, 150 mM chloride, and 0.2 mM ascorbate, which was filtered, stored in glass vials ( $-20^{\circ}\text{C}$ ), and sonified before use. Tubing (1.2  $\mu\text{l}/100$  mm FEP-tubing CMA/Microdialysis AB, Stockholm, Sweden) was connected with tubing adapters (CMA/Microdialysis, Stockholm, Sweden) to the microdialysis probe's inlet and outlet. Microdialysis vials were preweighed and placed in a cooled fraction collector (Univentor 820 Microsampler, Antec, Netherlands) to collect the microdialysate samples. Microdialysis probes were continuously flushed with PF (2  $\mu\text{l}/\text{min}$ , Bee-Hive, Bioanalytical Systems Inc. W-Lafayette, USA), and 10 minute interval samples were collected between  $t = -1$  h to  $t = 1$  h, followed by 20 minute interval samples until  $t = 3$  h.

After sample collection, vials were weighed to determine true probe perfusion rate (a maximal deviation of 5% was allowed for the sample to be included in the data), and stored at  $-80^{\circ}\text{C}$ .

In 27 rats of the intranasal groups, 30  $\mu\text{l}$  0.5% Evans blue was administered in 30 seconds at the end of the experiments. 10 to 15 minutes later, the animals were sacrificed with an overdose of Nembutal (Ceva Sante Animale, Naaldwijk, The Netherlands). The nose tip, nasal cavities, brain, mouth, lungs, and intestines were visually examined for blue coloration and scored on a scale; 3, 2, 1, and 0, representing full, medium, light, and no coloration respectively.

## ■ Analysis

For the plasma corticosterone (CORT) concentrations, a commercially available 125I-corticosterone Radio Immunoassay (RIA) was used (Immun Chem™ Double Antibody Corticosterone 125I RIA kit, MP Biomedicals, Orangeburg, NY, USA), according to the instructions of the manufacturer. Data acquisition was performed on a Gamma Scintillation Counter (Minaxi 5000 series, Packard). Concentrations were calculated using R 2.5.0 (The R Foundation for Statistical Computing, Vienna, Austria). Data exceeding 1.5 times the interquartile range was excluded from the dataset. Geometric means of the CORT concentrations for the control group and all the animals at  $t = 0$  min were calculated, and compared with literature to determine the amount of stress induced by our operational and handling techniques. Heteroscedasticity was eliminated by calculating logarithmic conversion of the data (Lew, 2007; Flynn, et al., 1974), and data were normalized to their own baseline to minimize interindividual variability. Thereafter, the groups were tested at every time point by a single factor ANOVA to determine the amount of stress induced by our experimental techniques.

Acetaminophen concentrations in plasma and microdialysate were determined using High Pressure Liquid Chromatography with Electro-Chemical Detection (HPLC-ECD). For all procedures Purified Millipore water (MQ, resistivity 18.2 M $\Omega$ .cm) from a Milli-Q® PF Plus system was used (Millipore B.V., Amsterdam, The Netherlands). Sigma, Zwijndrecht, The Netherlands delivered 3,4-dihydroxybenzylamine hydrobromide (DHBA), L-cysteine, and 1-octane-sulfonic acid (OSA). Ethylenediaminetetraacetic acid (EDTA), perchloric acid, sodiumacetate, and L-(+)-ascorbic acid were obtained from Baker, Deventer, The Netherlands. Ortho-phosphoric acid, di-sodium hydrogen phosphate dihydrate, and sodium dihydrogen phosphate monohydrate were obtained from Merck, Amsterdam, The Netherlands. Methanol and acetic acid from Biosolve B.V., Valkenswaard, The Netherlands. Calibration solutions were prepared by adding 50  $\mu$ l blank plasma to 50  $\mu$ l calibration standard; 10, 25, 50, 100, 200, 300, 400, 500, and 1,000 ng/ml acetaminophen in antioxidant (0.1 M acetic acid, 3.3 mM L-cysteine, 0.27 M EDTA, 0.0125 mM L-(+)-ascorbic acid, S. Sarre, personal communications).

To 50  $\mu$ l of the plasma samples 50  $\mu$ l MQ was added. To these samples 25  $\mu$ l internal standard (IS), containing 150 ng/ml DHBA, was added and proteins were precipitated by adding 100  $\mu$ l 6% perchloric acid. After vortexing and centrifugation (10 minutes at 4000 rpm), the supernatant was transferred into a clean glass tube; 150  $\mu$ l 1 M sodiumacetate was added, and after vortexing, injected into the HPLC-ECD. 20  $\mu$ l of the microdialysate samples was

vortexed with 20  $\mu\text{l}$  IS and directly injected into the HPLC-ECD system. The analytical equipment consisted of a LC-10 AD pump (Shimadzu, 's Hertogenbosch, The Netherlands), a Waters 717plus Autosampler (Waters, Etten-Leur, The Netherlands), a pulse damper (Antec Leyden, Zoeterwoude, The Netherlands), a C18 ODS Ultrasphere 5  $\mu\text{m}$  column (4.6 mm x 15 cm) with C18 refill guard column (Alltech Netherlands B.V., Ridderkerk, The Netherlands), an electrochemical amperometric detector (DECADE, software version 3.02, Antec Leyden B.V., Zoeterwoude, The Netherlands), a VT-03 electrochemical flow cell, 25  $\mu\text{m}$  spacer, and in situ AG/AgCl (ISAAC) reference electrode (filled with a saturated potassiumchloride solution) operating in DC mode. The mobile phase (MP) consisted of a 85% phosphate buffer (96,4% 1.0 M  $\text{NaH}_2\text{PO}_4$ , 3,6% 1.0 M  $\text{Na}_2\text{HPO}_4$ , diluted with MQ to 50 mM phosphate buffer, and OSA was added to obtain 2 mM OSA), 15% MeOH and 100 mg/l EDTA. MP was filtered through a 0.2  $\mu\text{m}$  nylon filter membrane (Alltech Netherlands B.V., Ridderkerk, The Netherlands).

Data acquisition and processing was performed using Empower® data acquisition software (Waters, Etten-Leur, The Netherlands). For constructing the calibration curve, linear regression analysis was applied using weight factor  $1/Y^2$ . Data exceeding 1.5 times the interquartile range were excluded from the dataset before plotting geometric mean concentrations over time. Data analysis, statistical analysis, and plotting was performed using Microsoft® Office Excel 2003 (Microsoft Corporation, USA) and OriginPro® 7.5 (Origin-Lab Corporation, Northampton, MA, USA).

Heteroscedasticity was eliminated before executing a single factor ANOVA on every time point (Flynn, et al., 1974; Lew, 2007). When  $p < 0.05$ , a Student T-test (one-tailed homoscedastic) was performed between the individual groups per time point. Areas Under the Curve (AUC) were calculated by the trapezoidal rule and microdialysis AUC's were corrected for *in vitro* recovery. AUC's were plotted, and tested for differences between groups by single factor ANOVA. The absolute recovery was calculated by dividing the plasma AUC after IN administration by the plasma AUC after IV administration.

Nonlinear mixed effect modeling (NONMEM 6.2, run in the PSN module (Lars et al., 2004) under Windows XP Professional 2002 (service pack3) on an Intel Pentium D CPU3.2 GHz processor) was used to model the pharmacokinetic parameters clearance and volume of distribution. 1-, 2- and 3-compartment models were entered in various subroutines in NONMEM for the experiments with acetaminophen, and identified by likelihood ratio test ( $p < 0.05$ ; decrease in objective function value of 3.84 points), pharmacokinetic parameter estimate endpoint, and goodness-of-fit plots. The inter-



individual variability of the blood PK model was assumed log-linear and optimized by taking possible correlation between parameters into account, and by testing the intraindividual variability through an additive error model versus a constant coefficient of variation model. The individual parameter estimates of the blood PK model allowed estimation of intercompartmental clearance and volume of distribution in the brain compartment.

Population parameter estimates were assumed to be normally distributed, and considered equal when the 95% confidence intervals of the parameter estimates overlap (1.96 times the standard error).

## RESULTS

### ■ Evans Blue

Of the 27 rats that had received Evans Blue through the intranasal probe in the right nasal cavity, one had a broken septum and was excluded in the determination of the nasal coloration. One animal experienced blocking of the intranasal probe, thereby decreasing the amount of Evans Blue reaching the right nasal cavity. Full coloration of the right nasal cavity was observed in 96% of the animals. The nose tip, tongue, palate and intestine were light colored in 81%, 89%, 93%, and 79% of the animals respectively. In the left nasal cavity 67% was not colored. In 96% of the animals the lungs as well as the olfactory bulb were not colored. Table 1, shows all the acquired data.

**Table 1** Colouration of several tissues after intranasal administration of 30 µl 0.5% Evans blue in 30 seconds.

Score	Nose tip	Lungs	Olfactory Bulb	Right cribrif. plate	Left cribrif. plate	Right nasal cavity	Left nasal cavity	Esophagus	Bowels	Stomach	Tongue	Palate
0	5	26	26	1	2	0	18	6	7	3	3	2
1	22	1	1	26	25	0	4	21	20	23	24	25
2	0	0	0	0	0	1	3	0	0	1	0	0
3	0	0	0	0	0	25	1	0	0	0	0	0

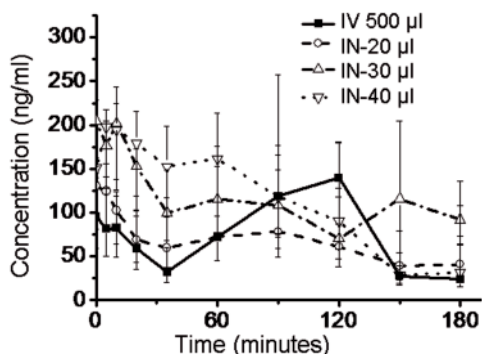
Tissue of 27 rats has been observed for full, medium, light, or no colouration scored by 3, 2, 1, and 0 respectively. The table shows the number of rats with accompanying scores.

### ■ Corticosterone as Biomarker for Stress

Geometric mean ( $\pm$  S.E.M.) of CORT concentrations in plasma at  $t = 0$  were  $166 \pm 14$  ng/ml ( $n = 33$ ). The groups did not show significant differences ( $p$ -values  $> 0.23$ ) over the time period of 180 minutes (Figure 2).

**Figure 2** Concentration-time profiles of corticosterone (geometric mean  $\pm$  S.E.M.) in plasma after intranasal administration of different volumes of saline (IN-20, -30, and -40  $\mu$ l), compared to intravenous (IV-500  $\mu$ l) administration.

Single factor ANOVA proves no differences between the groups ( $p > 0.23$ ).  $n = 9, 9, 8,$  and  $6$  for the IV, IN-20  $\mu$ l, IN-30  $\mu$ l, and IN-40  $\mu$ l groups respectively.



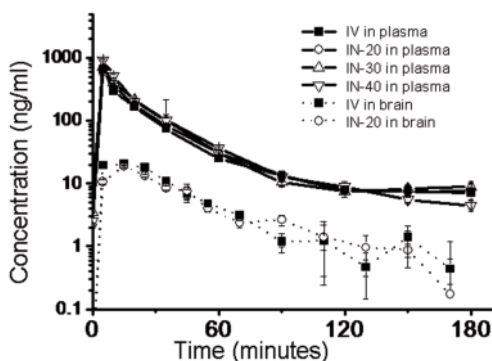
### ■ Acetaminophen as Model Compound

The log-normal geometric mean-time profiles of the concentrations in plasma after administration of acetaminophen (Figure 3) showed the same profiles for all groups. At  $t = 10$  min there were differences between the groups when tested IV vs. 30  $\mu$ l, 20  $\mu$ l vs. 30  $\mu$ l, and 20  $\mu$ l vs. 40  $\mu$ l ( $p$ -values are 0.04, 0.00, and 0.02 respectively). At  $t = 180$  differences were found between IV and 20  $\mu$ l, 20  $\mu$ l vs. 30  $\mu$ l, and 20  $\mu$ l vs. 40  $\mu$ l ( $p$ -values were 0.00, 0.04, and 0.02 respectively). Areas under the curve (AUC) in plasma with their standard error of the means were calculated (Figure 4);  $10.5 \pm 0.7$ ,  $11.6 \pm 0.6$ ,  $8.8 \pm 0.9$ , and  $9.6 \pm 0.8$  ( $\mu$ g\*min)/ml for IV, 20, 30, and 40  $\mu$ l IN administration respectively. No statistically significant differences between the groups were found ( $p = 0.07$ ).

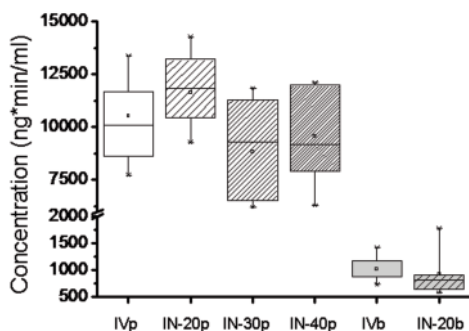
After measuring and plotting the geometric mean ( $\pm$  S.E.M., Figure 3) of acetaminophen brain microdialysate concentrations over time, single factor ANOVA revealed a difference in profiles at  $t = 5, 35$  and  $90$  min ( $p$ -values

were 0.00, 0.04 and 0.03 respectively). The maximal brain microdialysate acetaminophen concentration was reached earlier after intravenous administration.

**Figure 3** Concentration-time profiles (geometric means  $\pm$  S.E.M.) of acetaminophen in plasma and brain microdialysate after intranasal (IN) administration of 200  $\mu$ g acetaminophen in different volumes, compared to intravenous (IV) administration. At  $t = 10$  min concentrations in plasma (solid line) differed when tested IV vs. IN-30  $\mu$ l, IN-20  $\mu$ l vs. IN-30  $\mu$ l, and IN-20  $\mu$ l vs. IN-40  $\mu$ l ( $p = 0.04, 0.00, \text{ and } 0.02$  respectively). At  $t = 180$  differences were found between IV and 20  $\mu$ l, 20  $\mu$ l vs. 30  $\mu$ l, and 20  $\mu$ l vs. 40  $\mu$ l ( $p = 0.00, 0.04 \text{ and } 0.02$  respectively). In the brain microdialysates (dotted line) differences were found at  $t = 5, 35, \text{ and } 90$  min ( $p = 0.00, 0.04, \text{ and } 0.03$  respectively).



**Figure 4** Box plots of the Area's Under the Curve (AUC) of acetaminophen concentration-time profiles in plasma (p) and brain microdialysate (b), following intranasal (IN) administration of 200  $\mu$ g acetaminophen in different volumes (-20, -30, and -40  $\mu$ l), compared to intravenous (IV) administration. No differences between plasma AUC's were found ( $p > 0.07$ ). The AUC's of the brain microdialysates also show no difference ( $p = 0.98$ ).



Microdialysis *in vitro* recovery was 40%. The mean AUCs  $\pm$  S.E.M. of the brain concentrations were  $2.54 \pm 0.31$  ( $\mu\text{g}\cdot\text{min}$ )/ml and  $2.55 \pm 0.44$  ( $\mu\text{g}\cdot\text{min}$ )/ml for the control group and experimental group receiving 20  $\mu\text{l}$  solution respectively and did not differ (Figure 4,  $p = 0.98$ ). The absolute recovery of acetaminophen was 95%.

After comparing several models, a 2-compartment model with the brain compartment as an effect compartment, constant coefficient of variation for intraindividual variability and correlation between the clearance and volume of distribution of compartment 1 and 3 proved to fit the data best for both the experimental and the control study. Estimating interindividual variability on clearance and volume of distribution in effect compartment 2 did only improve the model (decrease in objective function value  $> 3.84$ ) of intranasal administration. Parameter estimates with their 95% confidence interval acquired from NONMEM are listed in table 2.

**Table 2** Population model parameter values.

		Blood and peripheral pharmacokinetic model					Brain pharmacokinetic model	
		CL1 (L/h)	V1 (L)	CL2 (L/h)	V2 (L)	KA (mg/h)	Q3 (L/h)	V3 (ml)
$\theta$	IV	$0.86 \pm 0.12$	$0.19 \pm 0.05$	$0.27 \pm 0.21$	$0.07 \pm 0.02^*$		$8.32 \pm 5.3$	$1050 \pm 300$
	IN	$0.89 \pm 0.11$	$0.17 \pm 0.04$	$0.40 \pm 0.06$	$0.13 \pm 0.03$	$86.3 \pm 19.4$	$2.63 \pm 1.96$	$886 \pm 286$
$\eta^2$	IV	$0.03 \pm 0.03$	$0.07 \pm 0.06$	-	-	-	$0.62 \pm 0.53$	$0.16 \pm 0.12$
	IN	$0.09 \pm 0.07$	$0.31 \pm 0.21$	-	$0.16 \pm 0.15$	-	$0.88 \pm 1.20$	$0.19 \pm 0.22$
$\sigma^2$	IV			$0.01 \pm 0.005$			$0.05 \pm 0.02$	
	IN			$0.02 \pm 0.01$			$0.06 \pm 0.04$	

Data represented are population parameter estimates ( $\theta$ ) with their interindividual variability ( $\eta^2$ ) and the population intraindividual variability ( $\sigma^2$ ) with their 95% confidence interval after intravenous (IV) or intranasal (IN) administration of 200 mg acetaminophen.

Parameters of the first central compartment are clearance (CL1) and volume of distribution (V1). For the second peripheral compartment clearance (CL2) and volume of distribution (V2) were determined, as well as the absorption rate constant (KA) after IN administration. In the brain the intercompartmental clearance(Q) and volume of distribution (V3) were estimated. Parameter estimates that differ between the studies are denoted with \*.

## DISCUSSION

The aim of this study was to develop and validate a new preclinical, refined minimal stress animal model, in which we can administer compounds intranasally and intravenously, with blood- and brain ECF samples to be taken over time. Our results indicate that IN administration in freely moving rats does not induce stress, while for the model compound acetaminophen it was observed that the pharmacokinetics following IN and IV administration were similar.

### ■ Evans Blue

Evans Blue is a dye with a high affinity for albumin which is present in nasal mucosa. Besides the expected full coloration of the targeted nasal cavity, 93% of the animals showed light coloration of the palate caused by leakage through the nasopalatine duct that connects the nose and mouth. This might be an indication for buccal absorption in rats, which should be considered in the PK and extrapolation of data to clinical situations, since in humans the nasopalatine duct does not extend to the mouth. However, due to its role, in cooperation with the vomeronasal organ, in food recognition, sex recognition, and courtship we found it not advisable to close the nasopalatine duct (Jacob, et al., 2000). Also, after the 10 minutes following Evans Blue administration a small part was swallowed, which could indicate the possibility of partial oral uptake after intranasal administration. This can be caused by passive leakage to the oesophagus and/or active sweeping by the cilia in the nose. Since rats are obligate nose breathers (Krinke, 2000) this obviously cannot be prevented in freely moving animals. The concentration-time curves of acetaminophen however, excluded substantial uptake of compound through oral absorption. Use of other (more viscous) formulations could possibly eliminate this problem in future research.

### ■ Corticosterone

In our study, the CORT data show no influence of administration techniques, nor of volume of administration. Cano *et al.* (Cano, et al., 2008) performed a circadian rhythm study concerning the CORT concentrations in Wistar rats during high-fat induced stress and compared it to a normally fed control group. In that study, plasma concentrations of CORT were found to be  $283 \pm 35$  ng/ml (mean  $\pm$  S.E.M.) in the control group, with an amplitude of  $97 \pm 11$  ng/ml, versus  $456 \pm 42$  ng/ml in the experimental group, showing a significant difference compared to the control group ( $p < 0.01$ ). Also, in that study, CORT concentrations were roughly 200 ng/ml straight after onset

of the light phase, indicating higher basal concentrations when compared with our experiments  $166 \pm 14$  ng/ml (basal average  $\pm$  S.E.M.). Additionally, Perello *et al.* (Perello, et al., 2006) discovered in individually housed Wistar rats, after decapitation under conditions of minimal stress after the onset of the light phase, basal concentrations of  $363 \pm 35$  ng/ml (mean  $\pm$  S.E.M.) in animals. This was significantly higher when compared to their group-housed animals ( $206 \pm 32$ ) and to our individually housed freely moving animals. Perello *et al.* (Perello, et al., 2006) stated their CORT concentrations to be low when compared to restraining studies and bacterial lipopolysaccharide injection. In our freely moving animals, we find no evidence that stress levels are increased due to our handling techniques or experiments, moreover, when compared to aforementioned studies, we have less CORT release indicating less stress.

### ■ Acetaminophen

In principle, differences in the concentration time profiles in both plasma and brain data can be explained by the absorption phase over the nasal epithelium *versus* IV administration, as well as by the difference in infusion time. Equal plasma AUCs indicate that the same amount of drug as IV is absorbed after IN administration. Although differences are found when testing data per time point, the comparison of the concentration-time profiles with NONMEM show no differences in parameter estimates, except for V2. Adding interindividual variability for V2 in the IV model did not increase the predictability and was therefore left out of the model, but this can cause the difference in the population estimates for V2 since adding interindividual variability did improve the IN model. The individual- and population estimates described the data well. We can consider the free drug concentrations in the ECF in terms of intercompartmental clearance (Q3) and V3, which gives us information on the blood-brain-barrier transport and whether direct transport from the nasal epithelium into the brain could be an issue. Since the plasma pharmacokinetics after IV and IN administration are similar, increased CNS target site bioavailability after IN administration should result in increased brain concentrations after IN administration compared to IV administration, which is not the case. Acetaminophen is subject to metabolization by P450, that is highly present in the nasal epithelium (Sarkar, 1992), but this did not influence the PK of acetaminophen following intranasal administration relative to that following intravenous dosing. Furthermore, we found no evidence of substantial buccal or oral absorption in the concentration-time profiles of acetaminophen. The population estimates of the brain showed no differences in intercompartmental clearance, volume of distribution, interindividual- or intraindividual variability.

## **CONCLUSIONS**

The animals showed clear coloration in the right nasal cavity, so after intranasal administration, the major part of the administered 30  $\mu$ l Evans Blue remained in the nasal cavity and the cannula can be used to administer compounds in the right nasal cavity in freely moving animals, with little or no drainage to other absorption sites.

When compared to other studies reported in literature, our experimental and handling techniques resulted in lower CORT concentrations, which indicates less stress during the experiments in freely moving animals.

The intranasal administration did not increase CORT concentrations, and there were no differences in CORT concentrations when volumes up to 40  $\mu$ l are administered, compared to IV administration.

With respect to the plasma and brain pharmacokinetics of acetaminophen we conclude that following IN administration no evidence was found for selective distribution enhancement to the brain. The administration of acetaminophen is site specific, as also concluded from the Evans Blue study. We do emphasize however that the administration of acetaminophen by the intranasal route shows a very rapid absorption indicated by identical PK when compared to IV administration.

In summary, the new intranasal administration method in freely moving animals allows the local, stress free administration of acetaminophen, while blood and brain pharmacokinetics can be observed over time.

## REFERENCES

- American Academy of Pediatrics: Committee on Drugs (1997) Alternative Routes of Drug Administration---Advantages and Disadvantages (Subject Review). *Pediatrics* **100**:143-152.
- Cano P, Jimenez-Ortega V, Larrad A, Reyes Toso CF, Cardinali DP and Esquifino AI (2008) Effect of a high-fat diet on 24-h pattern of circulating levels of prolactin, luteinizing hormone, testosterone, corticosterone, thyroid-stimulating hormone and glucose, and pineal melatonin content, in rats. *Endocrine* **33**:118-125.
- Dahlin M, Jansson B and Bjork E (2001) Levels of dopamine in blood and brain following nasal administration to rats. *Eur J Pharm Sci* **14**:75-80.
- De Lange EC, Danhof M, De Boer AG and Breimer DD (1994) Critical factors of intracerebral microdialysis as a technique to determine the pharmacokinetics of drugs in rat brain. *Brain Res* **666**:1-8.
- Dufes C, Olivier JC, Gaillard F, Gaillard A, Couet W and Muller JM (2003) Brain delivery of vasoactive intestinal peptide (VIP) following nasal administration to rats. *Int J Pharm* **255**:87-97.
- Flynn FV, Piper KA, Garcia-Webb P, McPherson K and Healy MJ (1974) The frequency distributions of commonly determined blood constituents in healthy blood donors. *Clin Chim Acta* **52**:163-171.
- Graff CL and Pollack GM (2005a) Nasal drug administration: potential for targeted central nervous system delivery. *J Pharm Sci* **94**:1187-1195.
- Graff CL and Pollack GM (2005b) Functional Evidence for P-glycoprotein at the Nose-Brain Barrier. *Pharmaceutical Research* **22**:86-93.
- Jacob S, Zelano B, Gungor A, Abbott D, Naclerio R and McClintock MK (2000) Location and Gross Morphology of the Nasopalatine Duct in Human Adults. *Arch Otolaryngol Head Neck Surg* **126**:741-748.
- Jansson B and Bjork E (2002) Visualization of in vivo olfactory uptake and transfer using fluorescein dextran. *J Drug Target* **10**:379-386.
- Kandimalla KK and Donovan MD (2005) Localization and Differential Activity of P-glycoprotein in the Bovine Olfactory and Nasal Respiratory Mucosae. *Pharmaceutical Research* **22**:1121-1128.
- Krinke GJ (2000) *The laboratory rat*. Academic Press.
- Lars L, Jakob R and Niclas J (2004) Perl-speaks-NONMEM (PsN)-a Perl module for NONMEM related programming. *Comput Methods Programs Biomed* **75**:85-94.
- Lennox P, Hern J, Birchall M and Lund V (1996) Local anaesthesia in flexible nasendoscopy. A comparison between cocaine and co-phenylcaine. *J Laryngol Otol* **110**:540-542.
- Lew M (2007) Good statistical practice in pharmacology Problem 1. *Br J Pharmacol* **152**:295-298.
- Moghaddam B and Bunney BS (1989) Ionic composition of microdialysis perfusing solution alters the pharmacological responsiveness and basal outflow of striatal dopamine. *J Neurochem* **53**:652-654.
- Perello M, Chacon F, Cardinali DP, Esquifino AI and Spinedi E (2006) Effect of social isolation on 24-h pattern of stress hormones and leptin in rats. *Life Sciences* **78**:1857-1862.
- Raphael JH and Butt MW (1997) Comparison of isoflurane with propofol on respiratory cilia. *Br J Anaesth* **79**:473-475.
- Raphael JH, Selwyn DA, Mottram SD, Langton JA and O'Callaghan C (1996a) Effects of 3 MAC of halothane, enflurane and isoflurane on cilia beat frequency of human nasal epithelium in vitro. *Br J Anaesth* **76**:116-121.
- Raphael JH, Strupish J, Selwyn DA, Hann HCL and Langton JA (1996b) Recovery of respiratory ciliary function after depression by inhalation anaesthetic agents: an in vitro study using nasal turbinate explants. *Br J Anaesth* **76**:854-859.
- Sapolsky RM, Romero LM and Munck AU (2000) How Do Glucocorticoids Influence Stress Responses? Integrating Permissive, Suppressive, Stimulatory, and Preparative Actions. *Endocr Rev* **21**:55-89.



- Sarkar MA (1992) Drug Metabolism in the Nasal Mucosa. *Pharmaceutical Research* **9**:1-9.
- Schaiquevich P, Niselman V, Tumilasci O and Modesto R (2004) Evaluation of acetaminophen P-glycoprotein-mediated salivary secretion by rat submandibular glands. *Archives of Oral Biology* **49**:895-901.
- Schindler E, Müller M, Zickmann B, Kraus H, Reuner KH and Hempelmann G (1996) Blood supply to the liver in the human after 1 MAC desflurane in comparison with isoflurane and halothane. *Anesthesiol Intensivmed Notfallmed Schmerzther* **31**:344-348.
- Schipper NGM, Verhoef JC and Merkus FWHM (1991) The Nasal Mucociliary Clearance: Relevance to Nasal Drug Delivery. *Pharmaceutical Research* **8**:807-814.
- Selwyn DA, Raphael JH, Lambert DG and Langton JA (1996) Effects of morphine on human nasal cilia beat frequency in vitro. *Br J Anaesth* **76**:274-277.
- Shi Z, Zhang Q and Jiang X (2005) Pharmacokinetic behavior in plasma, cerebrospinal fluid and cerebral cortex after intranasal administration of hydrochloride meptazinol. *Life Sci* **77**:2574-2583.
- Ugwoke MI, Verbeke N and Kinget R (2001) The biopharmaceutical aspects of nasal muco adhesive drug delivery. *J Pharm Pharmacol* **53**:3-21.
- Van Bree JB, Baljet AV, Van Geyt A, De Boer AG, Danhof M and Breimer DD (1989) The unit impulse response procedure for the pharmacokinetic evaluation of drug entry into the central nervous system. *J Pharmacokinet Biopharm* **17**:441-462.
- Van den Berg M, Merkus P, Romeijn S, Verhoef JC and Merkus F (2004) Uptake of Melatonin into the Cerebrospinal Fluid After Nasal and Intravenous Delivery: Studies in Rats and Comparison with a Human Study. *Pharmaceutical Research* **21**:799-802.
- Veronesi MC, Kubek DJ and Kubek MJ (2007) Intranasal delivery of a thyrotropin-releasing hormone analog attenuates seizures in the amygdala-kindled rat. *Epilepsia* **48**:2280-2286.