



Universiteit
Leiden
The Netherlands

Molecular characterization of pathogenic *Clostridium difficile* strains

Bakker, D.

Citation

Bakker, D. (2014, November 5). *Molecular characterization of pathogenic Clostridium difficile strains*. Retrieved from <https://hdl.handle.net/1887/29641>

Version: Corrected Publisher's Version

License: [Licence agreement concerning inclusion of doctoral thesis in the Institutional Repository of the University of Leiden](#)

Downloaded from: <https://hdl.handle.net/1887/29641>

Note: To cite this publication please use the final published version (if applicable).

Cover Page



Universiteit Leiden



The handle <http://hdl.handle.net/1887/29641> holds various files of this Leiden University dissertation.

Author: Bakker, Dennis

Title: Molecular characterization of pathogenic *Clostridium difficile* strains

Issue Date: 2014-11-05

4

Analysis of a *Clostridium difficile* PCR Ribotype 078 100 kilobase island reveals the presence of a novel transposon, Tn6164

J. Corver¹, D. Bakker¹, M. Brouwer², C. Harmanus¹, M. Hengens¹, A. Roberts², L. Lipman³, E. Kuijper¹ and H. Van Leeuwen¹.

¹ *Department of Medical Microbiology, Section Experimental Microbiology, Center of Infectious Diseases, Leiden University Medical Center, Leiden, The Netherlands.*

² *Division of Microbial Diseases, UCL Eastman Dental Institute, University College London, London, UK*

³ *Division of Veterinary Public Health, Faculty of Veterinary Medicine, Institute of Risk Assessment Sciences.*

Abstract

Clostridium difficile is the main cause of antibiotic associated diarrhea. In the past decade, the number of *C. difficile* patients has increased dramatically, coinciding with the emergence of two PCR Ribotypes, 027 and 078. PCR Ribotype 078 is also frequently found during *C. difficile* outbreaks in pigfarms. Previously, the genome of the PCR Ribotype 078 strain M120, a human isolate, was described to contain a unique insert of 100 kilobases.

Analysis of this insert revealed over 90 open reading frames, encoding proteins originating from transposons, phages and plasmids. The insert was shown to be a transposon (Tn6164), as evidenced by the presence of an excised and circularised molecule, containing the ligated 5' and 3' ends of the insert. Transfer of the element could not be shown through filter-mating experiments. Whole genome sequencing of PCR Ribotype 078 strain 31618, isolated from a diarrheic piglet, showed that Tn6164 was not present in this strain. To test the prevalence of Tn6164, a collection of 231 *Clostridium difficile* PCR Ribotype 078 isolates from human (n = 173) and porcine (n = 58) origin was tested for the presence of this element by PCR. The transposon was present in 9 human, tetracycline resistant isolates, originating from various countries in Europe, and none of the pig strains. Nine other strains, also tetracycline resistant human isolates, contained half of the transposon, suggesting multiple insertion steps yielding the full Tn6164. Other PCR ribotypes (n = 66) were all negative for the presence of the transposon. Multi locus variable tandem repeat analysis revealed genetic relatedness among transposon containing isolates. Although the element contained several potential antibiotic resistance genes, it did not yield a readily distinguishable phenotype.

Tn6164 is a newly described transposon, occurring sporadically in *C. difficile* PCR Ribotype 078 strains. Although no transfer of the element could be shown, we hypothesize that the element could serve as a reservoir of antibiotic resistance genes for other bacteria. Further research is needed to investigate the transfer capabilities of the element and to substantiate the possible role of Tn6164 as a source of antibiotic resistance genes for other gut pathogens.

Introduction

Over the past decade, *Clostridium difficile* has emerged as an important gut pathogen, causing hospital- and community-acquired diarrhea. The number of patients and the severity of disease have increased dramatically, due to the emergence of two hypervirulent PCR ribotypes (RT), 027 (1) and 078 (2,3). Traditionally, RT 027 has been linked to nosocomial outbreaks. In contrast, RT 078 has been detected frequently in farming animals, especially pigs (2,4), and is found more during community acquired infection. The increase in *C. difficile* infections (CDI) of humans has boosted interest in *C. difficile* biology, diagnostics and pathogenesis.

In the past few years, multiple genome sequences of several RTs have been determined (5-8). The analyses of the genomes, aided by comparative genomics of DNA-DNA microarrays (9,10) has shown that the genomes of *C. difficile* are highly variable with inserts of mobile DNA from phage, plasmid or transposon origin. These mobile DNA elements are actively moving within *C. difficile* genomes and are frequently passed on to neighboring bacteria, harboring mosaic genomes (7,11). It is unclear what role the mobile elements play in the virulence of *C. difficile*. Some virulence linked genes, for example the holin-like *tcdE*, have a phage origin (12). In fact, it has been suggested that the whole Pathogenicity Locus (PaLoc), encoding the major *C. difficile* virulence factors TcdA and TcdB, is of phage origin (13,14). Recently, phages have been shown to upregulate toxin production in *C. difficile*, thereby increasing the virulence (15). *C. difficile* transposons have been shown to contain antibiotic resistance genes (5,7,16,17), and therefore acquiring such an element could increase the virulence and/or colonization potential of a particular strain.

Mobile elements play an important role in the diversification of bacterial genomes. One important group of mobile genetic elements is the Tn916 family of conjugative transposons (also known as integrative and conjugative elements (ICEs)) (18). These conjugative transposons usually code for tetracycline resistance and are found primarily in the *Firmicutes*. Numerous transposons have been described to be present in *C. difficile* genomes (5,7,11,17,19). Several elements closely related to Tn916 are present in diverse *C. difficile* strains, including Tn5397 which confers tetracycline resistance (20,21). Other transposons have been described to confer resistance to chloramphenicol and erythromycin (5).

Recently, the first full length genome of a RT 078 strain was published (5). This M120 strain has been isolated from an Irish diarrheic patient. It was shown that RT 078 is highly divergent from RTs 027, 001, 017 and 012. In addition, this RT 078 strain was described to contain a unique 100 kb insert that showed 80% similarity to sequences of *Thermoanaerobacter* species and *Streptococcus pneumoniae* (5). In this

paper we show that the 100 kb insert is a mobile element that is only sporadically present in RT 078 strains. Furthermore, we show that the 100 kb consists of at least two independent mobile elements that were fused during evolution.

Material and Methods

Bacterial isolates and culture conditions

RT 078 *C. difficile* strain 31618 was obtained from a pig farm in the eastern part of the Netherlands where neonatal diarrhea was present. Culturing of the feces yielded *C. difficile*, as determined by an in-house PCR for the presence of the *gluD* gene encoding the glutamate dehydrogenase specific for *C. difficile* (39). PCR Ribotype was determined as previously described (40).

The other RT 078 strains used in this study were obtained from a previously described RT 078 strain collection (16), consisting of strains isolated from humans and pigs, supplemented with human RT 078 strains from the European *Clostridium difficile* Infection Survey (ECDIS) study in 2010 (32). In addition, recently isolated RT 078 strains from Dutch diarrheic piglets (2007–2010) and human (2006–2010) strains collected by the Dutch *C. difficile* Reference Laboratory (CDRL) were used. The 58 Pig strains were collected on 27 pig farms in the Netherlands.

RT 126 strains used in this study originate from the ECDIS study, isolated in 2010, from several countries in Europe (32). PCR Ribotype reference strains (n = 68) were obtained from the CDRL. The nontoxigenic strain CD37 (41,42) was used as a recipient in filter mating experiments as this has previously been shown to be a good recipient for mobile genetic elements from other *C. difficile* strains (11). *C. difficile* strain M120 was kindly provided by Dr. Trevor Lawley (Sanger Institute). Standard culturing of *C. difficile* isolates was carried out on blood agar plates at 37 °C and anaerobic conditions.

DNA Sequencing, reference assembly and annotation

DNA was isolated from one colony of the 31618 strain by standard techniques (43). The isolate was sequenced using the Illumina platform (Solexa) at the Leiden Genome Technology Center (LGTC) at the LUMC, using the manufacturers' protocols. Single end reads were generated and submitted to the NCBI sequence read archive (<http://www.ncbi.nlm.nih.gov/sra>) under accession number SRX030155. A reference assembly of the reads was carried out against strain *C. difficile* RT 078 strain M120 (GenBank accession no. FN665653), using CLC genomics workbench (CLCbio, Aarhus, Denmark). Number of reads used was 5267302, of which 2968638 reads could be mapped to the M120 genome sequence. The unique 100 kb

insert present in M120 was readily identified with the CLC genomics workbench. The ORFs present in the insert were identified by CLC genomics workbench and annotation was carried out manually, using BLAST and SMART. ORFs identified as “protein of unknown function” were further analyzed by profile-profile searches through HHpred (<http://toolkit.tuebingen.mpg.de/hhpred>).

Bioinformatic comparison of the mixed origin of Tn6164

The genome of strain M120 was compared to the genomes of *C. difficile* 630 (Genbank accession no. AM180355), *Thermoanaerobacter* sp. (GenBank accession no. CP002210), *S. pneumonia* (Genbank accession no. CP002121) and *C. fetus* (Genbank accession no. FN594949) using the Artemis Comparison Tool (44).

Circularization of the transposon

In order to investigate if the putative element could excise itself from the genome, PCR analysis was performed to amplify the joint region of a circular molecule using primers at the ends of the element, facing outward (primers 14 and 15 in Table 1). PCR amplifications were carried out using the NEB *Taq* Polymerase kit (New England Biolabs, Herts, UK) according to the manufacturer’s instructions with 10 mM dNTPs (NEB). The primers that were used are listed in Table 1 (Sigma-Genosys, UK).

Filter-matings assays

Filter-matings were carried out as described previously (45). *C. difficile* strains M120 and CD37 were cultured on Brain heart infusion (BHI) (Oxoid Ltd.) agar supplemented with 5% Horse blood (E&O laboratories). *C. difficile* strain CD37 was used as recipient. Transconjugants were selected for on BHI plates supplemented with 25 µg/mL rifampicin (Sigma Aldrich) and 10 µg/mL tetracycline (Sigma Aldrich). Transconjugants were examined using PCR with primer pair Lok1/Lok3 to confirm identity of the recipient strain and primer pairs Tn6164 accessory region Fw + Rev and Tn916 Fw + Rev to confirm the transfer of Tn6164 or Tn6190.

Inverse PCR

C. difficile genomic DNA was digested with PstI or EcoRI. After purification, the genomic DNA fragments were self-ligated to create circular DNAs. Subsequently, the DNA was precipitated and dissolved in H₂O. PCR was carried out on the DNA, using primers 4-rev and 5-rev or 14 and 15 (annealing at 58°C, 35 cycles). PCR products were visualized by gel electrophoresis and sequences were determined through direct sequencing on the purified PCR amplicons or through cloning into pCR2.1/TOPO (Invitrogen) and subsequent sequencing with the plasmid-located

primers T7 and M13reverse. Oligonucleotides used in this study are shown in Table 1.

PCR

PCRs were carried out using Gotaq polymerase (Promega, Leiden, the Netherlands). Reactions contained 0.4 mM dNTPs, 0.4 uM oligonucleotides. Annealing temperature of the PCR was set at 50°C and PCRs were standardized at 30 cycles.

Antibiotic resistance

The MIC for tetracycline was determined using E tests (BioMérieux, Boxtel, the Netherlands) on blood plates under anaerobic conditions at 37°C. Breakpoint for

Table 1: Oligonucleotides used in this study.

Name	Sequence (5'- 3')	Purpose
1	GAGATATGGTTATGAGATTAGG	Presence/absence of insert
2	CCCACCTTTATAGCATCATATAG	Absence of insert
3	CTAACCTATCAACTCAACCCC	Presence of insert
4	AGGATAAGACCGCAGCAGAA	Presence 5'half of insert
5	AAAAACGACGGTTTTCTGTG	Presence 5'half of insert
6	GGGCAAATAGAAAGTCAAACG	Presence 3'half of insert
7	AAGTGGTGTTCCTTTGGAGGA	Presence 3'half of insert
8	CCACAGGGATACCTTCTCGTGC	Presence of <i>tet(44)</i> gene
9	TTCATATCCTCGGGTTTTGCAT	Presence of <i>tet(44)</i> gene
10	CAGGTGTTGAAATAGATATTGAG	Detect 3' end half insert
11	CAGAAGTCGATCCTTCTGGG	Detect 3' end half insert
12	GGTGGCTGAACTCGTTAATC	Detect 3' end half insert
13	CTCCACATGGCTCGAGTTG	Detect 3' end half insert
14	GAGGAATTTAACAGAACAGTATTT	Excision studies
15	TCTATCCTGCCTTCTCAACC	Excision studies
16	CGAATCGCTGAAATGACTGA	Excision studies
17	GCGAATGATTTTCATGGAAGG	Excision studies
18	CGACTGCATTACCAGTTCCA	Excision studies
Lok1 (13)	AAAATATACTGCACATCTGTATAC	Transconjugant screening
Lok3 (13)	TTTACCAGAAAAAGTAGCTTTAA	Transconjugant screening
19	CAGCTGCAGTTTTTCCATGA	Transconjugant screening
20	GCAGCTAACGGTGATGACAA	Transconjugant screening
Tn916 Fw (30)	GACGGAAGATACTTATACA	Transconjugant screening
Tn916 Rev (30)	GCCTTTGGATTCAATCCTGC	Transconjugant screening

tetracycline was 8 µg/mL. Spectinomycin resistance was determined by an agar dilution method of *C. difficile* colonies on BHI agar plates, supplemented with increasing amounts of spectinomycin. Streptomycin resistance was tested by disk diffusion method, using Sensi-Neotabs (Rosco, Denmark) (Streptomycin 500 µg disks) on blood plates under anaerobic conditions at 37°C.

Statistical analyses

Patients samples with the full 100 kb insert were compared to patients' samples with a part of the insert or no insert. The Chi-square test and *t*-test were used to calculate the p-value. Analyses were performed using the SPSS for Windows software package, version 17.0.

MLVA

Sixty eight strains were subjected to MLVA, of which 39 were previously characterized (16). MLVA and construction of the minimal spanning tree based on the MLVA results were carried out as described previously (16).

Results

Previously, an insert, unique for *C. difficile*, was described in the genome of strain M120, a PCR Ribotype078 strain, isolated from an Irish diarrheic patient (5). We analyzed the open reading frames (ORFs) present in the insert to investigate their nature and origin (see Figure 1 and Table 2).

The 100 kb insert has a modular composition

Bioinformatic analysis revealed that the insert has a modular composition. The 3' end of the insert (module E) is homologous to Tn1806 of *S. pneumoniae* which confers erythromycin resistance. Although this element has not been shown to transfer via conjugation, transfer via transformation was shown (22). In *C. difficile* strain M120 this element appears to be the backbone into which several other elements have been inserted (see Figure 1 top panel). The first 7.3 kb on the 5' end of the insert (module A) has only moderate homology (60–70% maximum sequence identity) to known sequences. Interestingly, this part of the insert contains 2 putative modification DNA methylases and a putative endonuclease, possibly enabling a form of molecular vaccination as described by Kobayashi *et al.* (23). During this process methylation protects the incoming element from host endonucleases and, following integration, will protect the host chromosome from endonucleases present on other mobile genetic elements. This sequence is followed by a complete prophage of approximately 39.5 kb (module B), which shows 92% sequence identity to a *Thermoanaerobacter sp.* prophage (Genbank

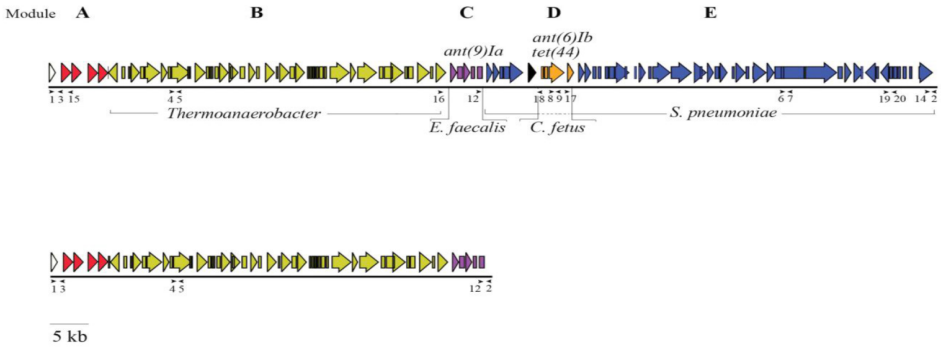


Figure 1: Schematic view of full Tn6164 (top panel) and half the element (bottom panel) and its open reading frames, flanked by *C. difficile* regions. Various parts of the insert are colored according to their homology. White, *C. difficile*; Red, Module A; Yellow, Module B; Purple, Module C; Orange, Module D; Blue, Module E; black, unknown. Location of the oligonucleotides used for the data in Table 3 is indicated by arrowheads.

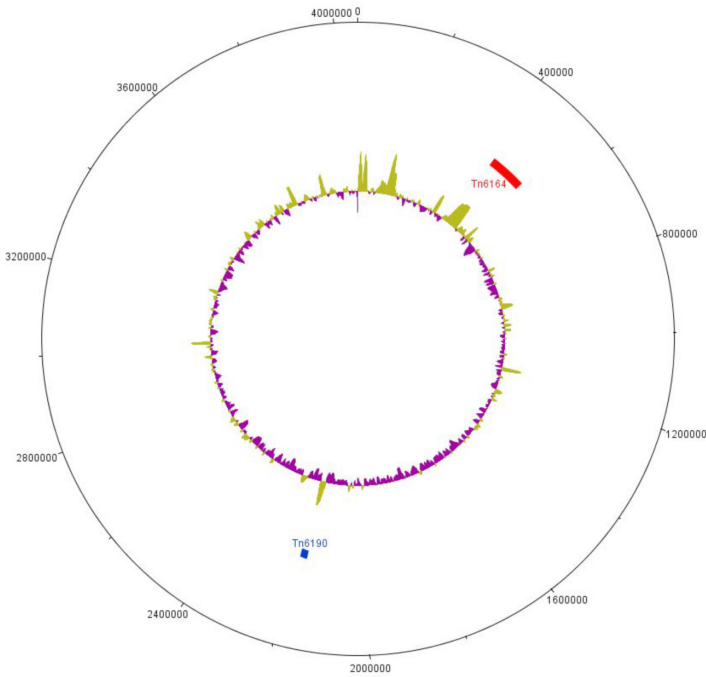


Figure 2: Circular representation of the genome of *C. difficile* strain M120. The two concentric circles represent the genome (outer circle) and the G + C content (inner circle; window size 10,000; Step size 200). Green represents values higher than average (29%), purple below average. In between the two circles, the presence of the two transposable elements is indicated in red (Tn6164) and blue (Tn6190). Figure was created using DNA plotter (46)

accession no. CP002210). The next 4.5 kb stretch (module C) is 99% identical to part of the *Enterococcus faecalis* plasmid pEF418 containing, amongst others, a putative methyltransferase and a putative spectinomycin adenylyltransferase (*ant(9) Ia*) (24). It is also described to be part of a pathogenicity island in *Streptococcus suis* (25). Finally, an insertion of approximately 4.5 kb (module D) with 90% sequence identity to the transferable pathogenicity island of *Campylobacter fetus subsp. fetus* (26) is present within the sequence of Tn1806. This sequence contains, amongst others, putative *tet* (44) and *ant(6)-Ib* genes, which could respectively confer tetracycline and streptomycin resistance.

The G + C content of the entire insert (34%) was significantly higher than that of the entire genome (29%), clearly indicating that the insert was of foreign origin (Figure 2). In addition, within the insert the different modules could be distinguished by their G + C contents. The G + C content of module A, B, C, D and E was 31%, 41%, 35%, 28% and 31%, respectively.

The 100 kb insert is a transposon

Based on the bioinformatic comparison of the insert described above, the possible excision of 3 (independent) elements was predicted. Primers were designed (primers 14–20, see Table 1) to amplify the circular intermediates of the complete insert (primers 14 and 15), the putative *Thermoanaerobacter* sp. phage (module B, primers 15 and 16) and the *C. fetus* pathogenicity island (module D, primers 17 and 18) of the element. PCR confirmed only the excision and circularisation of the entire insert (results not shown). It is expected that the serine recombinase at the 3' end of the element is responsible for excision (see Table 2). Sequencing of the circular intermediate was used to determine the precise ends of the element, showing the element is flanked by a TG dinucleotide; serine recombinases prefer a 2 bp crossover site identical in the target site and joint of the circular intermediate (27). *In silico* extraction of this sequence from the genome confirms that the element is present in the homologous target site of CTn2 in strain 630 (7). The precise size of the element is 106,711 bp and it runs from bp 418,525–525,236 (including the TG dinucleotide at both ends) in the M120 genomic sequence (GenBank accession no. FN665653). Upon our request, the transposon number Tn6164 was provided by the Transposon registry (28) (<http://www.ucl.ac.uk/eastman/tn/index.php>). To test the conjugative transfer of the element, filter mating assays were performed, selecting for the possible tetracycline resistance by means of the *tet*(44) gene. However, M120 contains also a copy of *tet*(M) present on a conjugative transposon with 97% sequence identity to Tn916 (16), which we have designated Tn6190. This element has inserted intragenically in the homologue of *C. difficile* strain 630 ORF CD2015. Tn6190 contains homologues to all Tn916 ORFs except *orf12* which is involved in regulation of *tet*(M) through transcriptional attenuation (29).

Table 2: Open reading frames encoded by Tn6164.

Gene	Position on Tn6164	Module	Sequence identity to	Annotation	Gene	Position on Tn6164	Module	Sequence identity to	Annotation
<i>Orf1</i>	650-1930	A	-	putative modification methylase	<i>Orf7</i>	50511-51038	C	<i>E. faecalis</i> pEF418	putative adenine phosphoribosyltransferase
<i>Orf2</i>	1915-3186	A	-	putative modification methylase	<i>Orf48</i>	51251-51979	C	<i>E. faecalis</i> pEF418	putative spectinomycin/streptomycin adenylyltransferase
<i>Orf3</i>	3252-3962	A	-	hypothetical protein	<i>Orf49</i>	52403-53176	E	<i>S. pneumoniae</i>	phage protein/replication initiator
<i>Orf4</i>	3952-5031	A	-	ATPase associated with various cellular activities	<i>Orf50</i>	53176-54000	E	<i>S. pneumoniae</i>	DNA replication protein
<i>Orf5</i>	5047-6312	A	-	LlaII restriction endonuclease	<i>Orf51</i>	53993-54478	E	<i>S. pneumoniae</i>	DUF 3801
<i>Orf6</i>	C 7557-6361	A	-	Protein with unknown function, contains a C-terminal CGNR Zinc finger motif	<i>Orf52</i>	54475-55209	E	<i>S. pneumoniae</i>	phage antirepressor protein
<i>Orf7</i>	8000-8494	B	<i>Thermoaerobacter</i> sp.	ECF RNA polymerase sigma-24 factor	<i>Orf53</i>	55202-56890	E	<i>S. pneumoniae</i>	TraG/TraD family protein
<i>Orf8</i>	8809-9126	B	<i>Thermoaerobacter</i> sp.	rRNA biogenesis protein rrp5, putative	<i>Orf54</i>	57454-58486	E	-	DUF 318 Predicted Permease (HHPred)
<i>Orf9</i>	9123-10250	B	<i>Thermoaerobacter</i> sp.	Phage associated protein	<i>Orf55</i>	59048-59398	D	<i>C. fetus</i>	glyoxalase family protein
<i>Orf10</i>	10256-10816	B	<i>Thermoaerobacter</i> sp.	phage-associated protein	<i>Orf56</i>	59411-59938	D	<i>C. fetus</i>	transcriptional regulator
<i>Orf11</i>	10813-12747	B	<i>Thermoaerobacter</i> sp.	DNA-directed DNA polymerase	<i>Orf57</i>	59988-61910	D	<i>C. fetus</i>	tetracycline resistance protein

Gene	Position on Module Tn6164	Sequence identity to	Annotation	Gene	Position on Module Tn6164	Sequence identity to	Annotation
<i>Orf12</i>	12795-13625	<i>Thermoanaerobacter</i> sp.	Prophage antirepressor	<i>Orf58</i>	62225-63082	<i>C. fetus</i>	aminoglycoside 6-adenylyltransferase (AAD(6))
<i>Orf13</i>	13629-14048	<i>Thermoanaerobacter</i> sp.	DUF 4406 (HHPred)	<i>Orf59</i>	63575-64348	<i>S. pneumoniae</i>	replication initiator/phage
<i>Orf15</i>	16910-18259	<i>Thermoanaerobacter</i> sp.	SNF2-related protein	<i>Orf61</i>	65314-65814	<i>S. pneumoniae</i>	TnpX site-specific recombinase family protein
<i>Orf16</i>	18264-18722	<i>Thermoanaerobacter</i> sp.	phage-associated protein	<i>Orf62</i>	65938-66399	<i>S. pneumoniae</i>	Flavodoxin
<i>Orf17</i>	18842-19201	<i>Thermoanaerobacter</i> sp.	HNH endonuclease	<i>Orf63</i>	66817-67302	<i>S. pneumoniae</i>	putative conjugative transposon protein
<i>Orf18</i>	19314-19865	<i>Thermoanaerobacter</i> sp.	Phage terminase, small subunit	<i>Orf64</i>	67299-68033	<i>S. pneumoniae</i>	phage antirepressor protein
<i>Orf19</i>	19883-21058	<i>Thermoanaerobacter</i> sp.	S-adenosylmethionine synthetase	<i>Orf65</i>	68026-69816	<i>S. pneumoniae</i>	TraG/TraD family protein/putative conjugal transfer protein
<i>Orf20</i>	21039-22283	<i>Thermoanaerobacter</i> sp.	DNA methylase N-4/N-6 domain-containing protein	<i>Orf66</i>	70395-70706	<i>S. pneumoniae</i>	putative single-strand binding protein
<i>Orf21</i>	22384-23076	<i>Thermoanaerobacter</i> sp.	hypothetical/virulence-related protein	<i>Orf67</i>	70934-71797	<i>S. pneumoniae</i>	conjugative transposon membrane protein
<i>Orf22</i>	23445-24344	<i>Thermoanaerobacter</i> sp.	Putative amidoligase enzyme	<i>Orf68</i>	72099-72509	<i>S. pneumoniae</i>	conjugative transposon membrane protein
<i>Orf23</i>	24382-24843	<i>Thermoanaerobacter</i> sp.	AIG2/GGCT-like protein	<i>Orf69</i>	72580-74823	<i>S. pneumoniae</i>	type IV conjugative transfer system protein

Gene	Position on Tn6164	Module	Sequence identity to	Annotation	Gene	Position on Tn6164	Module	Sequence identity to	Annotation
<i>Orf24</i>	25462-26685	B	<i>Thermoanaerobacter</i> sp.	phage terminase	<i>Orf70</i>	74831-77410	E	<i>S. pneumoniae</i>	conjugative transposon cell wall hydrolase/NlpC/P60 family
<i>Orf25</i>	26793-27122	B	-	conserved hypothetical protein	<i>Orf71</i>	77648-79216	E	<i>S. pneumoniae</i>	putative surface protein
<i>Orf26</i>	27189-28451	B	<i>Thermoanaerobacter</i> sp.	HK97 family phage portal protein	<i>Orf72</i>	79231-80088	E	<i>S. pneumoniae</i>	putative bacteriocin
<i>Orf27</i>	28448-29128	B	<i>Thermoanaerobacter</i> sp.	Peptidase S14, ClpP	<i>Orf73</i>	80162-80773	E	<i>S. pneumoniae</i>	Predicted transcriptional regulator
<i>Orf28</i>	29140-30339	B	<i>Thermoanaerobacter</i> sp.	HK97 family phage major capsid protein	<i>Orf74</i>	80766-81749	E	<i>S. pneumoniae</i>	Protein with unknown function
<i>Orf29</i>	30585-30899	B	<i>Thermoanaerobacter</i> sp.	uncharacterized phage protein	<i>Orf75</i>	82268-82621	E	<i>S. pneumoniae</i>	transcriptional regulator, ArsR family
<i>Orf30</i>	30903-31238	B	<i>Thermoanaerobacter</i> sp.	phage head-tail adaptor, putative	<i>Orf76</i>	82696-83940	E	<i>S. pneumoniae</i>	major facilitator superfamily MFS_1
<i>Orf31</i>	31252-31662	B	<i>Thermoanaerobacter</i> sp.	HK97 family phage protein	<i>Orf77</i>	83927-84403	E	<i>S. pneumoniae</i>	toxin-antitoxin system, toxin component, GNAT domain protein
<i>Orf32</i>	31659-32012	B	<i>Thermoanaerobacter</i> sp.	Protein of unknown function (DUF806);	<i>Orf78</i>	84758-86491	E	<i>S. pneumoniae</i>	DNA topoisomerase III
<i>Orf33</i>	32016-32618	B	<i>Thermoanaerobacter</i> sp.	DUF3647 Phage protein (HHIPred)	<i>Orf79</i>	86484-87449	E	<i>S. pneumoniae</i>	possible DNA (cytosine-5-methyltransferase)
<i>Orf34</i>	33330-35786	B	<i>Thermoanaerobacter</i> sp.	Phage tape measure protein	<i>Orf80</i>	87436-95079	E	<i>S. pneumoniae</i>	superfamily II DNA and RNA helicase
<i>Orf35</i>	35800-36573	B	<i>Thermoanaerobacter</i> sp.	phage putative tail component	<i>Orf81</i>	95123-95779	E	<i>S. pneumoniae</i>	putative single-stranded DNA binding protein

Gene	Position on Tn6164	Module	Sequence identity to	Annotation	Gene	Position on Tn6164	Module	Sequence identity to	Annotation
<i>Orf36</i>	36692-39100	B	<i>Thermoanaerobacter</i> sp.	phage minor structural protein	<i>Orf82</i>	95939-96841	E	<i>S. pneumoniae</i>	transcriptional regulator, XRE family
<i>Orf37</i>	39320-39901	B	<i>Thermoanaerobacter</i> sp.	Putative Siphon Phage tail protein (HHIPred)	<i>Orf83</i>	97071-98282	E	<i>S. pneumoniae</i>	transporter, major facilitator family/multidrug resistance protein 2
<i>Orf38</i>	39928-42369	B	<i>Thermoanaerobacter</i> sp.	glycosyl hydrolase-like protein	<i>Orf84</i>	C 99739-98462	E	<i>S. pneumoniae</i>	relaxase/type IV secretory pathway protein VirD2
<i>Orf39</i>	42430-42855	B	<i>Thermoanaerobacter</i> sp.	toxin secretion/phage lysis holin	<i>Orf85</i>	C 101169-99795	E	<i>S. pneumoniae</i>	conjugal transfer relaxosome component TraJ
<i>Orf40</i>	42855-43556	B	<i>Thermoanaerobacter</i> sp.	N-acetylmuramoyl-L-alanine amidase	<i>Orf86</i>	C 101403-100321	E	<i>S. pneumoniae</i>	toxin-antitoxin system, toxin component, Fic family
<i>Orf41</i>	43975-45540	B	<i>Thermoanaerobacter</i> sp.	phage integrase family site-specific recombinase / resolvase	<i>Orf87</i>	C 101878-101396	E	<i>S. pneumoniae</i>	putative membrane protein
<i>Orf42</i>	45541-45954	B	<i>Thermoanaerobacter</i> sp.	recombinase/integrase	<i>Orf88</i>	C 102435-101887	E	<i>S. pneumoniae</i>	putative toxin-antitoxin system, toxin component
<i>Orf43</i>	46222-47529	B	<i>Thermoanaerobacter</i> sp.	phage integrase family site-specific recombinase	<i>Orf89</i>	C 102845-102444	E	<i>S. pneumoniae</i>	regulator/toxin-antitoxin system, antitoxin component
<i>Orf44</i>	47987-48856	C	<i>E. faecalis</i> pEF418	Nucleotidyl transferase	<i>Orf90</i>	103034-103555	E	<i>S. pneumoniae</i>	conserved hypothetical protein
<i>Orf45</i>	48837-49571	C	<i>E. faecalis</i> pEF418	methyltransferase	<i>Orf91</i>	103825-104235	E	<i>S. pneumoniae</i>	sigma-70, region 4
<i>Orf46</i>	49604-50467	C	<i>E. faecalis</i> pEF418	putative aminoglycoside 6-adenylyltransferase	<i>Orf92</i>	104966-106712	E	<i>S. pneumoniae</i>	site-specific recombinase, resolvase family



During filter mating experiments with M120 as a donor strain and CD37 as a recipient, all putative transconjugants were identified as the recipient strain. In total 70 transconjugants were tested by PCR, using primers Lok1, Lok3 (13), 19, 20, Tn916 Fw, and Tn916 Rev (30). However, none contained Tn6164, all contained only Tn6190 (results not shown).

Tn6164 is sporadically present in PCR Ribotype078

Simultaneously with the publication of the M120 sequence, we obtained Illumina sequence reads of the *C. difficile* strain 31618, which was isolated from a diarrheic piglet from a pig farm in the Netherlands (16). Comparative genomic analysis of 31618 to M120 revealed an almost complete overlap of the two genomes. However, reference assembly of the 31618 reads to M120 showed that Tn6164 was not present in 31618 (results not shown). This prompted us to investigate the prevalence of Tn6164 in RT 078 strains. We designed a PCR to show presence (primers 1 and 3) or absence (primers 1 and 2) of Tn6164 in RT 078 genomic DNA (see Figure 1 top panel). In addition, in view of the heterogeneous origin of Tn6164 and to investigate the presence of both the *Thermoanaerobacter* prophage and *Streptococcus* DNA (Modules B and E, respectively), we designed two more PCRs (primers 4–5 and 6–7). Finally, we designed a PCR to detect the presence of the *tel*(44) gene present on Tn6164 (Module D, primers 8 and 9). Besides the sequenced 31618 strain, 173 human RT 078 strains and 58 porcine RT 078 strains (from 27 pig farms) were tested for the presence of these elements.

A minority of the isolates tested did contain a DNA insert at the indicated location in the genome; 18 of the 231 isolates (7.8%) were positive in the 1–3 PCR (Table 3). Remarkably, all 18 strains were tetracycline resistant human isolates. None of the porcine strains contained an insert at the position tested. Strains positive in the 1–3 PCR were negative in the 1–2 PCR, and *vice versa*, showing complete complementarity of the two PCRs in RT 078 strains.

Evidence for multiple insertions in Tn6164

All the strains that contained an insert (based on the 1–3 PCR) were further analyzed for the presence of Module B and E present in Tn6164, using primer pairs 4–5 and 6–7 (see Figure 1 top panel and Table 1). Only nine of 18 strains positive for PCR 1–3 were positive for PCRs 4–5 and 6–7, suggesting the presence of the complete element as described for M120. The other 9 strains were only positive for Module B (PCR 4–5), showing the existence of alternative (shorter) elements (see Table 3), as predicted by the bioinformatic analysis. The strains that were positive for Module E (PCR 6–7) were also positive for Module D (PCR 8–9, see Table 3). In contrast, strains containing Module B, but not Module E, thus containing only half the

element, also lacked Module D. This indicates that the 3' end of half the element was situated upstream of Module D. Of the isolates that were only positive for the PCR 4–5, the exact 3' end of the insert was determined by sequencing the PCR product obtained with primers 12 and 2 (see Figure 1 bottom panel), which yielded a 350 bp product. The border of the 3' end was between the 3' end of Module C and the 5' end of Module E. A similar sequence was found at the homologous site when the full element was present, but also at the 3' end of the full element, the 5' end of the element, the joint of the circular intermediate and the predicted target site as based on the 630 sequence (see Table 4). This indicates that Tn6164 was created by two elements integrating in the same target site (next to each other) and fusing, with a second copy of the target site still present between the two original elements within Tn6164.

Table 3: Detection of specific regions of Tn6164 in RT 078 strains.

Strain	PCR 1-2*	PCR1-3 [§]	PCR 4-5 [#]	PCR 6-7 [†]	PCR 8-9 [†]	PCR 12-2 [‡]
56/69	-	+	+	-	-	+
26222	-	+	+	-	-	+
26114	-	+	+	-	-	+
26247	-	+	+	-	-	+
26235	-	+	+	-	-	+
6065935	-	+	+	-	n.t.	n.t.
ES1203	-	+	+	-	-	n.t.
7047337	-	+	+	-	n.t.	n.t.
8088158	-	+	+	-	n.t.	n.t.
50/19	-	+	+	+	+	-
GR0106	-	+	+	+	+	n.t.
DE1210	-	+	+	+	+	n.t.
BG1209	-	+	+	+	+	n.t.
NO1311	-	+	+	+	+	n.t.
NO1307	-	+	+	+	+	n.t.
IE1102	-	+	+	+	+	n.t.
GR0301	-	+	+	+	+	n.t.
10053737	-	+	+	+	n.t.	n.t.

*PCR only positive when no insert is present, [§]PCR only positive when insert is present
[#]PCR detects Module B, [†]PCR detects module E, [‡]PCR detects module D. [‡] PCR only positive in strains containing half of the element. Location of the oligonucleotides used is indicated in Figure 1. +, PCR positive; -, PCR negative; n.t., not tested

The sequences at the 3' end of the element in strains that contain half the insert or the full insert are identical. These are related to the sequence at the 5' end of the element and the middle section of the full element and also to the joint of the circular intermediate of *Tn6164* and the empty target site, compared to the empty target site of *CTn2* from strain 630. Sequence shown in underlined bold is the dinucleotide which is predicted to be recognised by the serine recombinase.

Table 4: Sequences of the joints between the genome and *Tn6164* and the joint of the circular form.

CGCAT TG CG-AGACTATAG	3'ends of half insert
CGCAT TG CG-AGACTATAG	3'ends of full insert
CTCA- TGT GGAGTGCCTGG	5'end of full insert
GCCA- TGT GGAGACTATAG	middle section of full element
CACA- TG CGTTGTCTTGTG	Joint of circular intermediate <i>Tn6164</i>
CACAT TGT G-AGACTGTAG	<i>CTn2</i> target site in strain 630

Absence of *Tn6164* sequences in other PCR ribotypes

Since RT 126 has been shown to be very closely related to RT 078, with an almost indistinguishable PCR Ribotype banding pattern, we also tested a small collection of RT 126 strains with the 1–2 and 1–3 PCRs. In none of the 10 RT 126 strains tested could we demonstrate the presence of an insert at the site in which *Tn6164* was inserted in M120 (results not shown).

In addition, a collection of 66 other PCR ribotypes was tested as well. This collection consisted of the 25 most frequently found PCR ribotypes in Europe, supplemented with the Leeds-Leiden collection (31). None of the other PCR ribotypes, was positive for PCR 1–3, 4–5 or 6–7.

No antibiotic resistance phenotype linked to presence of *Tn6164*

Since several putative antibiotic resistance genes were found to be present on the element (see Figure 1 and Table 2), strains containing full *Tn6164*, only half of the element, or no element at all were tested for antibiotics resistance. Resistance to tetracycline, spectinomycin and streptomycin was tested using several methods (see materials and methods). Surprisingly, no correlation was found between the presence of *tet(44)*, *ant(6)Ib* or *ant(9)Ia* and resistance to tetracycline, spectinomycin or streptomycin (see Table 5).

Table 5: Antibiotic sensitivity of RT 078 strains with(out) Tn6164.

Genes present (transposon)	Strain	MIC Tet (µg/mL)	MIC Spec (µg/mL)	Strep
	56/69	24	> 750	N.D.
	26222	16	N.D.	R
<i>ant(9)Ia</i> (Tn6164)	26114	32	N.D.	R
<i>tet(M)</i> (Tn6190)	26247	16	> 750	R
	26235	48	N.D.	N.D.
	06065935	8	N.D.	R
	50/19	48	>750	S
	GR0106	12	>750	R
<i>ant(9)Ia</i> (Tn6164)	DE1210	8	>750	R
<i>ant(6)</i> (Tn6164)	BG1209	8	>750	R
<i>tet(44)</i> (Tn6164)	NO1311	12	>750	R
<i>tet(M)</i> (Tn6190)	NO1307	8	>750	R
	IE1102	12	>750	R
	GR0301	8	>750	R
	10053737	N.D.	N.D.	R
<i>tet(M)</i> (Tn6190)	45/22	8	>750	N.D.
	29/74	<8	>750	N.D.
	31618	N.D.	<250	N.D.
None	07053152	<8	N.D.	R
	R20291(027)	N.D.	<250	N.D.

R, resistant (no halo around diffusion disk); S, sensitive (15 mm halo).

Strains containing full Tn6164 are all genetically related

Since we could not find many isolates containing Tn6164, we reasoned that the element could be relatively recently acquired and that the isolates thus might be genetically closely related. Therefore, we applied MLVA (3,16) on all the isolates containing Tn6164, or only half of it, supplemented with a number of isolates without the element, to investigate the genetic relatedness of the strains. In Figure 3, a minimal spanning tree of all the isolates containing an element is shown, with control strains. Based on the MLVA, all the isolates containing full Tn6164 ($n = 9$) are genetically related (STRD < 10) and four of them are in one clonal complex. Six isolates containing half of the element are also in this genetically related cluster, whereas the other three isolates containing half the element are not (STRD > 10).

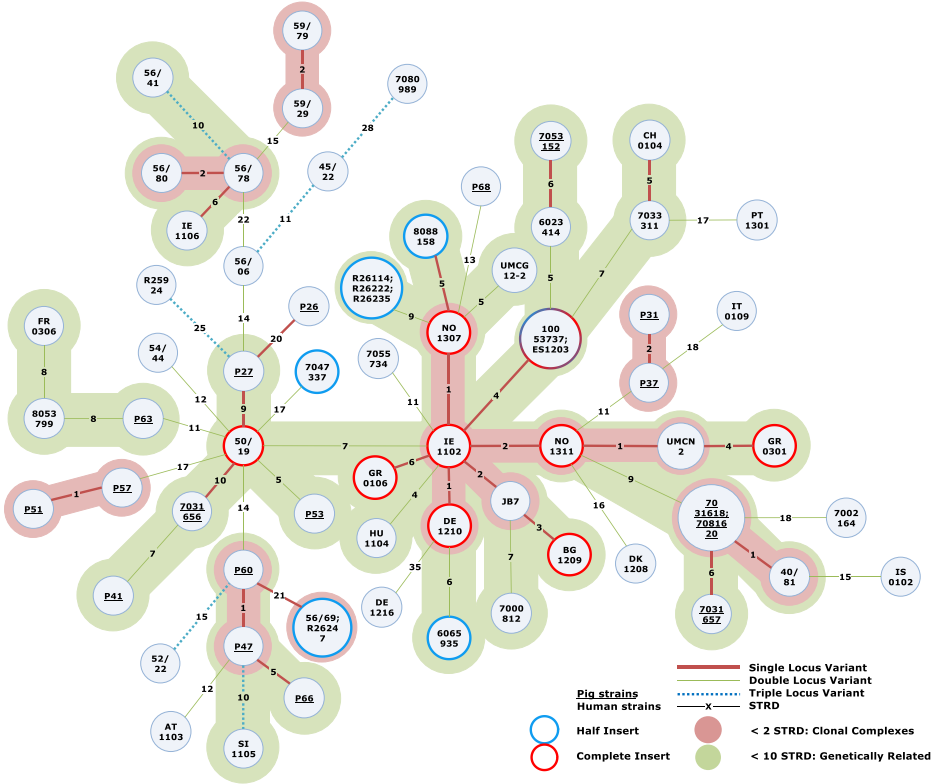


Figure 3: Minimum spanning tree of all the RT 078 isolates that contained an insert (50 or 100 kb), supplemented with strains not containing the element. Each circle represents either one unique isolate or more isolates that have identical MLVA types. Red circles indicate strains with full *Tn6164* and blue circles indicate strains with half the element. The numbers between the circles represent the summed tandem-repeat differences (STRD) between MLVA types. Underlined numbers represent porcine strains and normal numbers represent human isolates. Thick red lines represent single-locus variants; thin green lines represent double-locus variants and dotted blue lines represent triple locus variants between MLVA types. Clonal clusters are defined by an STRD of <2 (pink area), and genetically related clusters are defined by an STRD of <10 (green area).

Suggestive link between the 100 kb insert and increased virulence

To investigate a possible increased virulence of strains containing the element, clinical parameters of patients with a *C. difficile* infection due to a strain that contained Tn6164 were compared to parameters of patients that suffered from a strain that did not contain the full element. Patients with Tn6164 resembled patients without the element concerning demographic characteristics. Clinical characteristics were only known for patients from the ECDIS study (32) and patients registered in the CDRL (n = 84). Patients with and without the element suffered from severe diarrhea in similar proportions. Mortality due to CDI was more common in patients infected with *C. difficile*:Tn6164 (29% vs 3%). This suggests that Tn6164 might convert PCR Ribotype078 strains to a more virulent strain. However, since the number of patients infected with a Tn6164-positive strain, and for which the clinical data was available, was very low (n = 7), no multivariate analysis could be performed, which means that a bias cannot be ruled out. Further research is needed to confirm a possible link between increased virulence and the presence of Tn6164.

Discussion

PCR Ribotype 078 has recently emerged as a hypervirulent *C. difficile* strain (2,3). Previously published MLVA studies have shown that all PCR Ribotype 078 strains are closely related (3), irrespective of human or porcine origin (16), fostering the notion that PCR Ribotype 078 infection could be a zoonosis. Recently, the full genome sequence of a *C. difficile* PCR Ribotype 078 strain was published (5). This M120 strain was shown to contain a unique insert of approximately 100 kilobases. In this paper we show that this insert is a transposable element, Tn6164. It is not representative for all PCR Ribotype 078 strains. On the contrary, we found that the majority of the PCR Ribotype 078 strains do not contain the element. Moreover, some strains contain only half of the element. So, three different kinds of PCR Ribotype 078 can now be distinguished: Those with a full length element, those with half the element, and those with no element at all. Tn6164 was exclusively found in tetracycline resistant PCR Ribotype 078 strains, isolated from humans. We tested a collection of other PCR ribotypes, of which none contained the element. Since we only tested 1 strain per PCR ribotype, we cannot rule out the possibility that Tn6164 is present in other PCR ribotypes. We covered the whole genomic spectrum of *C. difficile* since we tested multiple samples of each genetic clade previously identified (10,33-35). In addition, Tn6164 has not been found in any other *C. difficile* genome that has been published so far than M120. Although

Tn6164 contained a *tet(44)* gene, we could not demonstrate increased tetracycline resistance of strains containing the element.

Previously, it has been shown that this gene, present on a homologous resistance island, is active in *C. fetus* (26). In *C. difficile*, the copresence of the *tet(44)* gene on Tn6164 and the *tet(M)* gene on the Tn6190 in one bacterium does not result in an increased resistant phenotype. Also the spectinomycin and streptomycin resistance genes did not result in a phenotype, despite the presence of two potential aminoglycoside resistance genes (*ant(9)Ia* and *ant(6)*) on Tn6164 (see Figure 1 and Table 2). We do not know if the resistance genes are expressed in M120. However, since we show the presence of the circular intermediate transposon DNA, some activity of transposon related genes is expected.

Since we have only found Tn6164 in strains also containing Tn6190, it is possible that Tn6164 transfer is dependent on Tn6190. Further research is needed to investigate the possibility of Tn6190 dependent transfer of Tn6164. In addition, remarkably, Tn6164 (the whole or half the element) was significantly ($p = 0.01$) more found in strains isolated from humans than in strains isolated from pigs. Although the same strains circulate in humans and pigs (16), and also Tn6190 circulates in pig strains (16), we did not find any porcine strain that contained the element. We have no explanation for this difference. None of the transconjugants tested showed the presence of Tn6164, but all contained Tn6190. These results indicate that Tn6164 has a (much) lower transfer frequency than Tn6190. Nevertheless, a complete set of proteins, required for transfer, is present on Tn6164. Loss of Tn6190 or introduction of another selection marker in Tn6164 (11) could prove to be a strategy to further study the capability of conjugative transfer of this element.

Tn6164 has integrated intergenically between homologs of the 630 ORFs CD0406 and CD0437, a tRNA methyltransferase and a hypothetical protein respectively. In strain 630, this target site is occupied by the conjugative transposon CTn2 (7,11). There is no significant homology between Tn6164 and CTn2. The empty target site is present in many sequenced strains of *C. difficile*. However, no other mobile genetic elements have been reported to integrate at this site.

It was impossible to phenotypically distinguish strains containing Tn6164 from strains without the element. Although we have no transcriptional data available of the genes that are located on Tn6164 it is clear that it could provide an advantage under certain circumstances. In this respect it is interesting to note that the patients suffering from an element-containing strain are suggested to undergo a more severe illness than patients with a strain not containing Tn6164. However, because of the low number of strains containing the insert no multivariate analysis could be carried out. Therefore, we cannot rule out that these data are biased. Further research is needed to confirm this observation.

Isolates containing the full element originated from all over Europe, including Ireland, England, Norway, Germany, Bulgaria, Greece and the Netherlands, whereas isolates containing half the element were only found in the United Kingdom, Spain and the Netherlands. MLVA showed genetic relatedness between most of the strains, although no epidemiologic link between the strains from different countries could be found. It has recently been shown that RT 078 strains show a lot less heterogeneity in MLVA than for instance RT 027 or RT 017 (36-38). This could indicate a higher level of relatedness, or it could mean that the mechanism behind the MLVA variability is different in RT 078 strains than in other RTs (16).

Altogether, we show the presence of a 100 kb transposon in some *C. difficile* RT 078 strains. Although we could not show any evolutionary benefits of the transposon, it could very well serve as a reservoir of antibiotic resistance (26), for commensal bacteria in the human gut.

Conclusion

Tn6164 is a novel transposon of approximately 100 kb, found sporadically in *Clostridium difficile* RT 078 strains, isolated from humans. Tn6164 has a modular composition and is the product of multiple insertions of separate elements from various origins, as evidenced by the existence of strains containing only half the element. Strains containing Tn6164 were all genetically related. We were not able to find a readily distinguishable phenotype for strains containing the element, although several potential antibiotic resistance genes were present on Tn6164. Tn6164 may act as a source of antibiotic resistance genes in the human gut. Further research is needed to investigate if Tn6164 plays a role in the virulence of RT 078 *Clostridium difficile* strains.

Reference List

1. Pepin J, Valiquette L, Cossette B: Mortality attributable to nosocomial *Clostridium difficile*-associated disease during an epidemic caused by a hypervirulent strain in Quebec. *CMAJ* 2005, 173:1037–1042.
2. Goorhuis A, Debast SB, van Leengoed LA, Harmanus C, Notermans DW, Bergwerff AA, *et al*: *Clostridium difficile* PCR Ribotype 078: an emerging strain in humans and in pigs? *J Clin Microbiol* 2008, 46:1157.
3. Goorhuis A, Bakker D, Corver J, Debast SB, Harmanus C, Notermans DW, *et al*: Emergence of *Clostridium difficile* infection due to a new hypervirulent strain, polymerase chain reaction Ribotype 078. *Clin Infect Dis* 2008, 47:1162–1170.
4. Debast SB, van Leengoed LA, Goorhuis A, Harmanus C, Kuijper EJ, Bergwerff AA: *Clostridium difficile* PCR Ribotype 078 toxinotype V found in diarrhoeal pigs identical to isolates from affected humans. *Environ Microbiol* 2009, 11:505–511.
5. He M, Sebahia M, Lawley TD, Stabler RA, Dawson LF, Martin MJ, *et al*: Evolutionary dynamics of *Clostridium difficile* over short and long time scales. *Proc Natl Acad Sci USA* 2010, 107:7527–7532.
6. Stabler RA, He M, Dawson L, Martin M, Valiente E, Corton C, *et al*: Comparative genome and phenotypic analysis of *Clostridium difficile* 027 strains provides insight into the evolution of a hypervirulent bacterium. *Genome Biol* 2009, 10:R102.
7. Sebahia M, Wren BW, Mullany P, Fairweather NF, Minton N, Stabler R, *et al*: The multidrug-resistant human pathogen *Clostridium difficile* has a highly mobile, mosaic genome. *Nat Genet* 2006, 38:779–786.
8. Forgetta V, Oughton MT, Marquis P, Brukner I, Blanchette R, Haub K, *et al*: Fourteen-Genome Comparison Identifies DNA Markers for Severe-Disease-Associated Strains of *Clostridium difficile*. *J Clin Microbiol* 2011, 49:2230–2238.
9. Marsden GL, Davis IJ, Wright VJ, Sebahia M, Kuijper EJ, Minton NP: Array comparative hybridisation reveals a high degree of similarity between UK and European clinical isolates of hypervirulent *Clostridium difficile*. *BMC Genomics* 2010, 11:389.
10. Stabler RA, Gerding DN, Songer JG, Drudy D, Brazier JS, Trinh HT, *et al*: Comparative phylogenomics of *Clostridium difficile* reveals clade specificity and microevolution of hypervirulent strains. *J Bacteriol* 2006, 188:7297–7305.
11. Brouwer MSM, Warburton PJ, Roberts AP, Mullany P, Allan E: Genetic Organisation, Mobility and Predicted Functions of Genes on Integrated, Mobile Genetic Elements in Sequenced Strains of *Clostridium difficile*. *PLoS One* 2011, 6:e23014.
12. Tan KS, Wee BY, Song KP: Evidence for holin function of *tdcE* gene in the pathogenicity of *Clostridium difficile*. *J Med Microbiol* 2001, 50:613–619.
13. Braun V, Hundsberger T, Leukel P, Sauerborn M, von Eichel-Streiber C: Definition of the single integration site of the pathogenicity locus in *Clostridium difficile*. *Gene* 1996, 181:29–38.
14. Govind R, VEDIYAPPAN G, Rolfe RD, Dupuy B, Fralick JA: Bacteriophage-mediated toxin gene regulation in *Clostridium difficile*. *J Virol* 2009, 83:12037–12045.
15. Sekulovic O, Meessen-Pinard M, Fortier LC: Prophage-Stimulated Toxin Production in *Clostridium difficile* NAP1/027 Lysogens. *J Bacteriol* 2011, 193:2726–2734.

16. Bakker D, Corver J, Harmanus C, Goorhuis A, Keessen EC, Fawley WN, *et al*: Relatedness of human and animal *Clostridium difficile* PCR Ribotype 078 isolates determined on the basis of multilocus variable-number tandem-repeat analysis and tetracycline resistance. *J Clin Microbiol* 2010, 48:3744–3749.
17. Adams V, Lyras D, Farrow KA, Rood JI: The clostridial mobilisable transposons. *Cell Mol Life Sci* 2002, 59:2033–2043.
18. Roberts AP, Mullany P: A modular master on the move: the Tn916 family of mobile genetic elements. *Trends Microbiol* 2009, 17:251–258.
19. Brouwer MSM, Roberts AP, Mullany P, Allan E: In silico analysis of sequenced strains of *Clostridium difficile* reveals a related set of conjugative transposons carrying a variety of accessory genes. *Mobile Genetic Elements* 2012, 2. <http://dx.doi.org/10.4161/mge.2.1.19297>.
20. Mullany P, Wilks M, Lamb I, Clayton C, Wren B, Tabaqchali S: Genetic analysis of a tetracycline resistance element from *Clostridium difficile* and its conjugal transfer to and from *Bacillus subtilis*. *J Gen Microbiol* 1990, 136:1343–1349.
21. Wang H, Roberts AP, Lyras D, Rood JI, Wilks M, Mullany P: Characterization of the ends and target sites of the novel conjugative transposon Tn5397 from *Clostridium difficile*: excision and circularization is mediated by the large resolvase, TndX. *J Bacteriol* 2000, 182:3775–3783.
22. Camilli R, Del GM, Iannelli F, Pantosti A: New genetic element carrying the erythromycin resistance determinant erm(TR) in *Streptococcus pneumoniae*. *Antimicrob Agents Chemother* 2008, 52:619–625.
23. Kobayashi I: Behavior of restriction-modification systems as selfish mobile elements and their impact on genome evolution. *Nucleic Acids Res* 2001, 29:3742–3756.
24. Murphy E: Nucleotide sequence of a spectinomycin adenyltransferase AAD(9) determinant from *Staphylococcus aureus* and its relationship to AAD(3'') (9). *Mol Gen Genet* 1985, 200:33–39.
25. Chen C, Tang J, Dong W, Wang C, Feng Y, Wang J, *et al*: A glimpse of streptococcal toxic shock syndrome from comparative genomics of *S. suis* 2 Chinese isolates. *PLoS One* 2007, 2:e315.
26. Abril C, Brodard I, Perreten V: Two novel antibiotic resistance genes, *tet(44)* and *ant(6)-Ib*, are located within a transferable pathogenicity island in *Campylobacter fetus* subsp. *fetus*. *Antimicrob Agents Chemother* 2010, 54:3052–3055.
27. Smith MC, Thorpe HM: Diversity in the serine recombinases. *Mol Microbiol* 2002, 44:299–307.
28. Roberts AP, Chandler M, Courvalin P, Guedon G, Mullany P, Pembroke T, *et al*: Revised nomenclature for transposable genetic elements. *Plasmid* 2008, 60:167–173.
29. Su YA, He P, Clewell DB: Characterization of the tet(M) determinant of Tn916: evidence for regulation by transcription attenuation. *Antimicrob Agents Chemother* 1992, 36:769–778.
30. Ciric L, Mullany P, Roberts AP: Antibiotic and antiseptic resistance genes are linked on a novel mobile genetic element: Tn6087. *J Antimicrob Chemother* 2011, 66:2235–2239.
31. Knetsch CW, Hensgens MPM, Harmanus C, van der Bijl MW, Savelkoul PH, Kuijper EJ, *et al*: Genetic markers for *Clostridium difficile* lineages linked to hypervirulence. *Microbiology* 2011, 157:3113–3123.
32. Bauer MP, Notermans DW, van Benthem BH, Brazier JS, Wilcox MH, Rupnik M, *et al*: *Clostridium difficile* infection in Europe: a hospital-based survey. *Lancet* 2011, 377:63–73.

33. Griffiths D, Fawley W, Kachrimanidou M, Bowden R, Crook DW, Fung R, *et al*: Multilocus sequence typing of *Clostridium difficile*. *J Clin Microbiol* 2010, 48:770–778.
34. Stabler RA, Dawson LF, Valiente E, Cairns MD, Martin MJ, Donahue EH, *et al*: Macro and Micro Diversity of *Clostridium difficile* Isolates from Diverse Sources and Geographical Locations. *PLoS One* 2012, 7:e31559.
35. Dingle KE, Griffiths D, Didelot X, Evans J, Vaughan A, Kachrimanidou M, *et al*: Clinical *Clostridium difficile*: clonality and pathogenicity locus diversity. *PLoS One* 2011, 6:e19993.
36. Fawley WN, Freeman J, Smith C, Harmanus C, van den Berg RJ, Kuijper EJ, *et al*: Use of highly discriminatory fingerprinting to analyze clusters of *Clostridium difficile* infection cases due to epidemic Ribotype 027 strains. *J Clin Microbiol* 2008, 46:954–960.
37. van den Berg RJ, Schaap I, Templeton KE, Klaassen CH, Kuijper EJ: Typing and subtyping of *Clostridium difficile* isolates by using multiple-locus variable-number tandem-repeat analysis. *J Clin Microbiol* 2007, 45:1024–1028.
38. Goorhuis A, Legaria MC, van den Berg RJ, Harmanus C, Klaassen CH, Brazier JS, *et al*: Application of multiple-locus variable-number tandem-repeat analysis to determine clonal spread of toxin A-negative *Clostridium difficile* in a general hospital in Buenos Aires, Argentina. *Clin Microbiol Infect* 2009, 15:1080-1086.
39. Paltansing S, van den Berg RJ, Guseinova RA, Visser CE, van der Vorm ER, Kuijper EJ: Characteristics and incidence of *Clostridium difficile*-associated disease, The Netherlands, 2005. *Clin Microbiol Infect* 2007, 13:1058–1064.
40. Bidet P, Barbut F, Lalande V, Burghoffer B, Petit JC: Development of a new PCR-ribotyping method for *Clostridium difficile* based on ribosomal RNA gene sequencing. *FEMS Microbiol Lett* 1999, 175:261–266.
41. Hachler H, Kayser FH, Berger-Bachi B: Homology of a transferable tetracycline resistance determinant of *Clostridium difficile* with Streptococcus (Enterococcus) faecalis transposon Tn916. *Antimicrob Agents Chemother* 1987, 31:1033–1038.
42. Brouwer MS, Allan E, Mullany P, Roberts AP: Draft Genome Sequence of the Nontoxigenic *Clostridium difficile* Strain CD37. *J Bacteriol* 2012, 194:2125–2126.
43. van den Berg RJ, Claas EC, Oyib DH, Klaassen CH, Dijkshoorn L, Brazier JS, *et al*: Characterization of toxin A-negative, toxin B-positive *Clostridium difficile* isolates from outbreaks in different countries by amplified fragment length polymorphism and PCR ribotyping. *J Clin Microbiol* 2004, 42:1035–1041.
44. Carver T, Berriman M, Tivey A, Patel C, Bohme U, Barrell BG, *et al*: Artemis and ACT: viewing, annotating and comparing sequences stored in a relational database. *Bioinformatics* 2008, 24:2672–2676.
45. Hussain HA, Roberts AP, Mullany P: Generation of an erythromycin-sensitive derivative of *Clostridium difficile* strain 630 (630Deltaerm) and demonstration that the conjugative transposon Tn916DeltaE enters the genome of this strain at multiple sites. *J Med Microbiol* 2005, 54:137–141.
46. Carver T, Thomson N, Bleasby A, Berriman M, Parkhill J: DNAPlotter: circular and linear interactive genome visualization. *Bioinformatics* 2009, 25:119–120.