

Cover Page



Universiteit Leiden



The handle <http://hdl.handle.net/1887/32623> holds various files of this Leiden University dissertation.

Author: Osorio, Laura Ann

Title: Personhood in Maya Art : a theoretical perspective

Issue Date: 2015-03-31



Figure 1. Lucien Freud's *Interior with plant, Reflection Listening (self-portrait)*



Figure 2. Virgin in Majesty, Cimabue, *The Madonna and Child in Majesty Surrounded by Angels*



Figure 3. Laocöon group 2nd or 1st century BCE



Figure 4. The Weather Project, Olafur Eliasson. Turbine Hall, London



Figure 5. Christian Marclay's *The Clock*, (video installation)



Figure 6. *Unearthed*, Karthik Pandian (installation).



Figure 7. Ricardo Martinez, La Llorona.



Figures 8 (a and b) map of Yucatan (below) and Santa Elena (above)





Figure 9. Aerial view of Santa Elena, Yucatan, showing San Mateo church and town centre.



Figure 10. Low tropical shrubland surrounding Santa Elena, Yucatan.



Figure 11. House with straw roof and earth floor in Santa Elena, Yucatan.



Figure 12. Women dressed in terna for the K'o Che festival, Santa Elena, Yucatan



Figure 13. The building of the K'o Che litter, Santa Elena, Yucatan



Figure 14. Map of archaeological sites showing Bonampak, Yaxchilan, Palenque and the Yucatan peninsula.

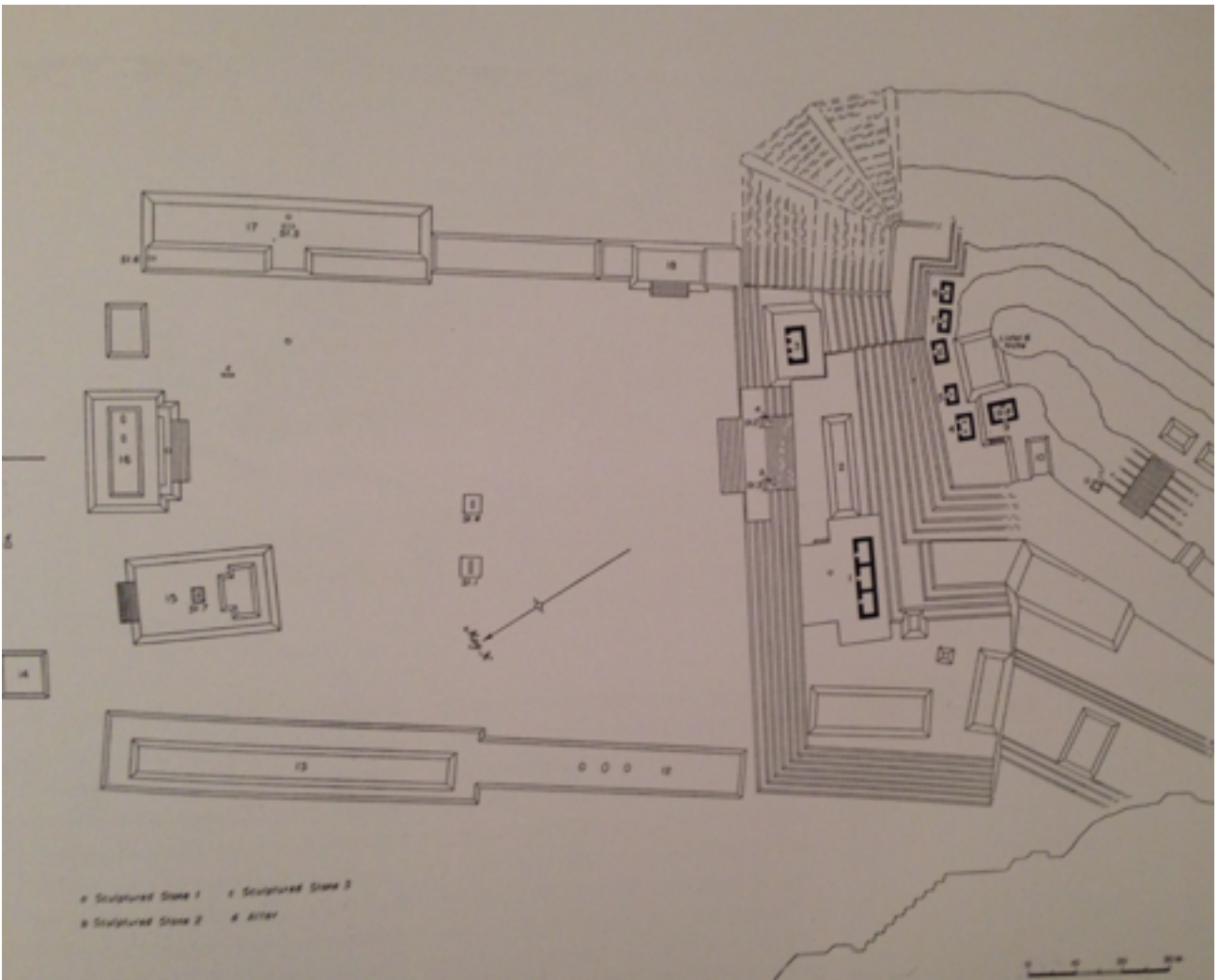


Figure 15. The layout of Bonampak, Chiapas. M Miller and C Brittenham 2013



Figure 16. Pseudo-corbelled arch of Room Three (east wall), Bonampak, Chiapas

Figure 17. Presentation of a baby Room one, Bonampak, Chiapas (south wall)

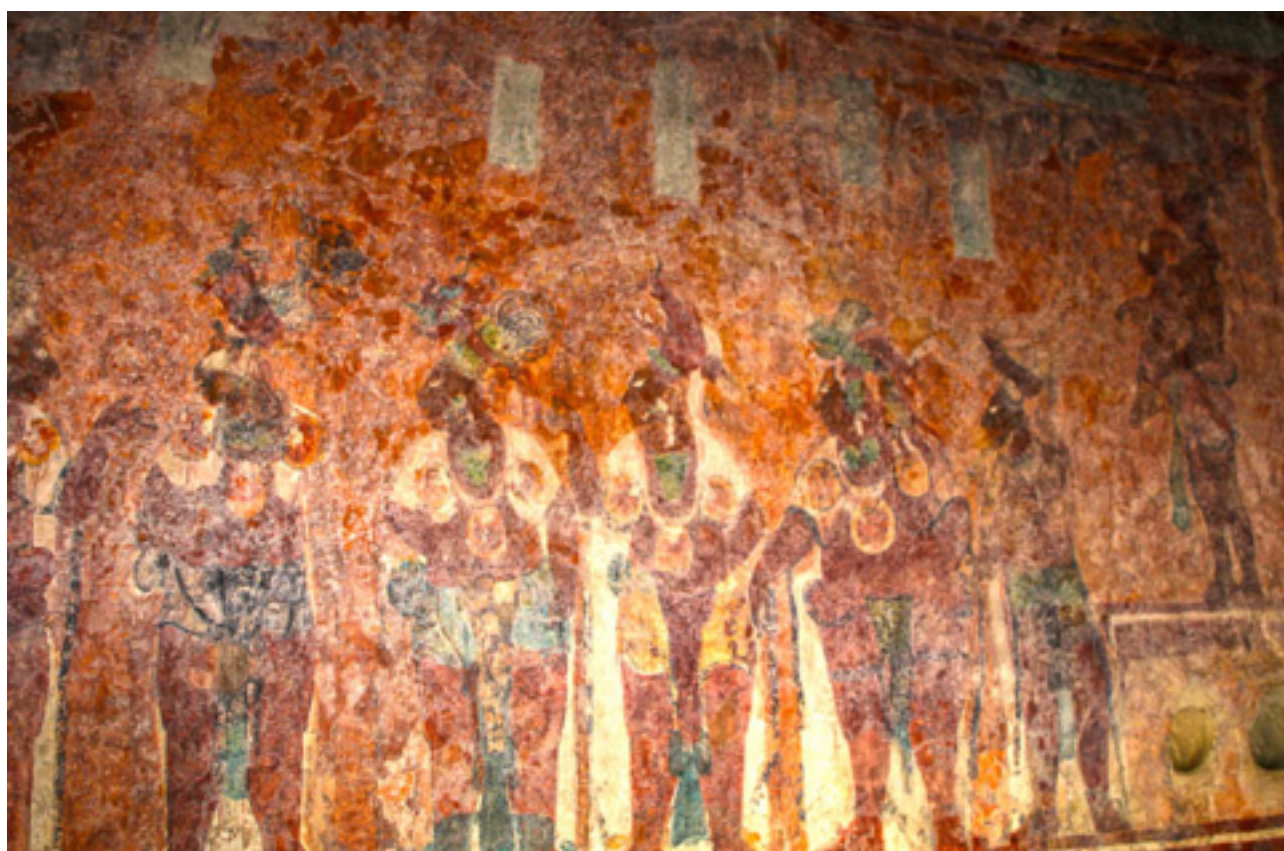


Figure 18. Presentation of a baby to standing men. Room one, Bonampak, Chiapas (south wall)



Figure 19. Preparation for the dance, assistance with headdresses. Room one, Bonampak, Chiapas (north wall)



Figure 20. Dancing in Room one (south wall), Bonampak, Chiapas



Figure 21. Battle scene Room two, Bonampak, Chiapas



Figure 22. The Presentation of the captives. Room two (north wall) Bonampak, Chiapas



Figure 23. Dying captive, Room two (north wall), Bonampak, Chiapas.



Figure 24. Captives engaged in blood-letting. Room two (north wall), Bonampak, Chiapas



Figure 25. Men standing on the upper frieze of the north wall. Room three, Bonampak, Chiapas



Figure 26. Musicians on the north wall of Room three, Bonampak, Chiapas



Figure 27. Detail showing impasto and visible brush strokes from Room one, Bonampak, Chiapas



Figure 28. Centaur and Lapith. Parthenon metope, Athens.



Figure 29. Figure stretching his arm ahead of him across a corner, Room one, Bonampak, Chiapas



Figure 30. Man slants with the corbelled wall on the east/west wall of Room one, Bonampak, Chiapas



Figure 31. Dwarf drummer breaks the upper frieze and enters the sky band. Room Three (west wall). Bonampak, Chiapas



Figure 32. The transportation of cedars for the Palace of Sargon II, Assyria.



Figure 33. Orchard and pool from the wall paintings of Nebamun's tomb chapel, Egypt.

Figure 34. Room one, Bonampak, Chiapas



Figure 35. Room two.
Bonampak,
Chiapas



Figure 36. Room three
Bonampak,
Chiapas



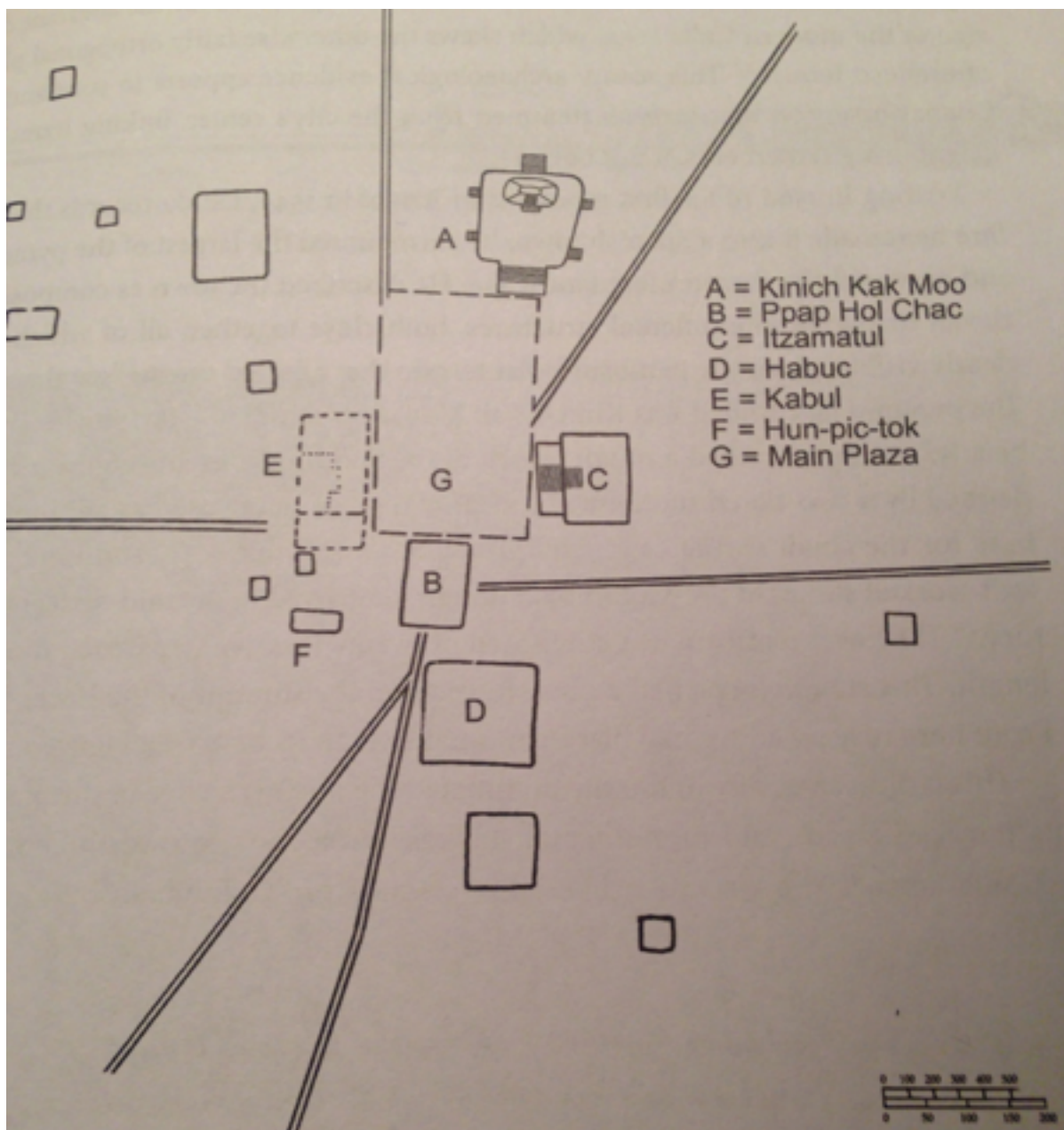


Figure 37. Layout of Pre-Colombian Itzmal, Yucatan peninsula (Solari 2013)



Figure 38. Convent San Antonio de Padua, Izamal, Yucatan.



Figure 39. ak'bal glyph in processional walkway, Izamal, Yucatan



Figure 40. Arma christi wall paintings from the posa chapel at Izamal, Yucatan

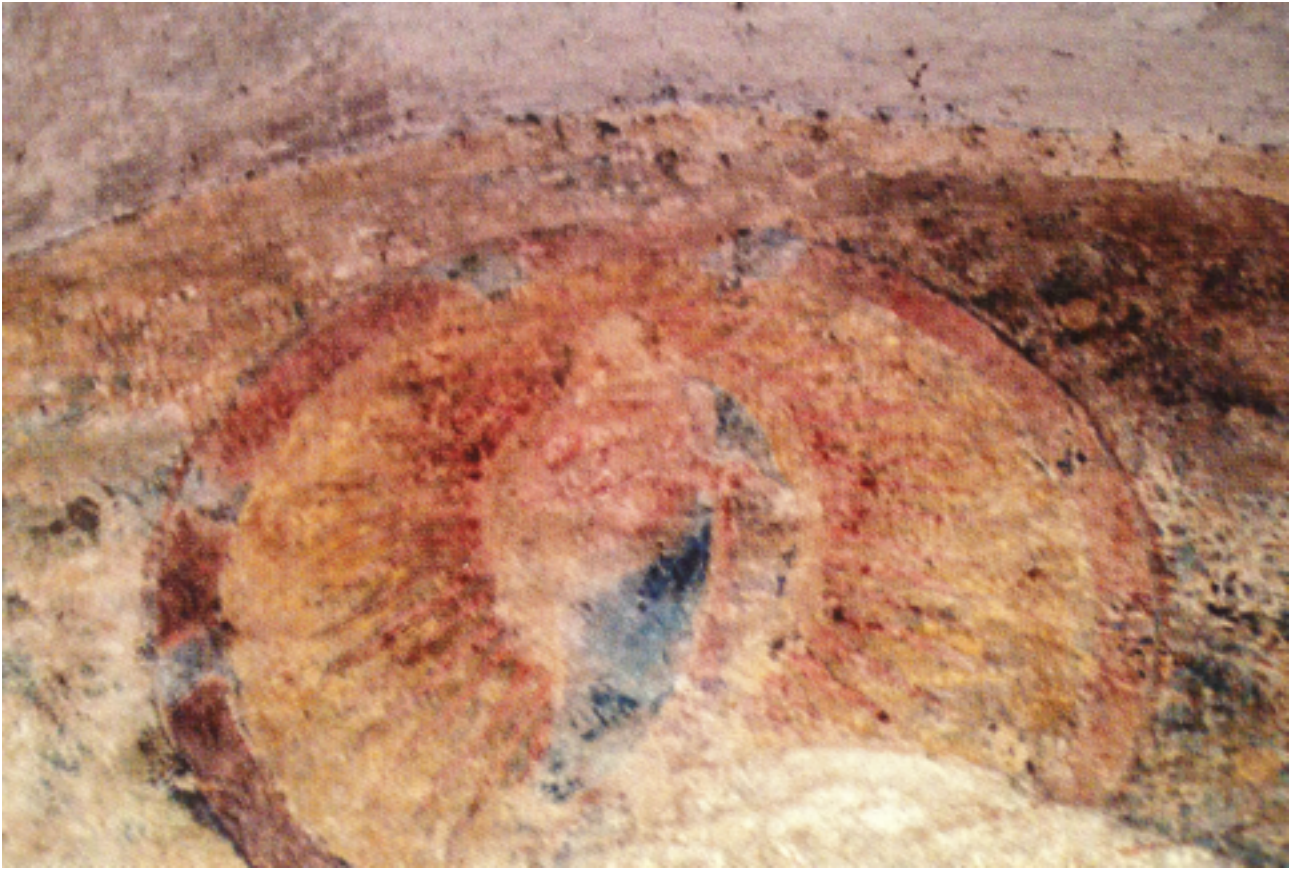


Figure 41. The Virgin of Izamal from the porteria doorway at San Antonio de Padua, Izamal, Yucatan



Figure 42. Friars painted onto porteria walls, San Antonio de Padua, Izamal, Yucatan



Figure 43. Man holding paint? honey? north wall of the porteria walls, San Antonio de Padua, Izamal, Yucatan



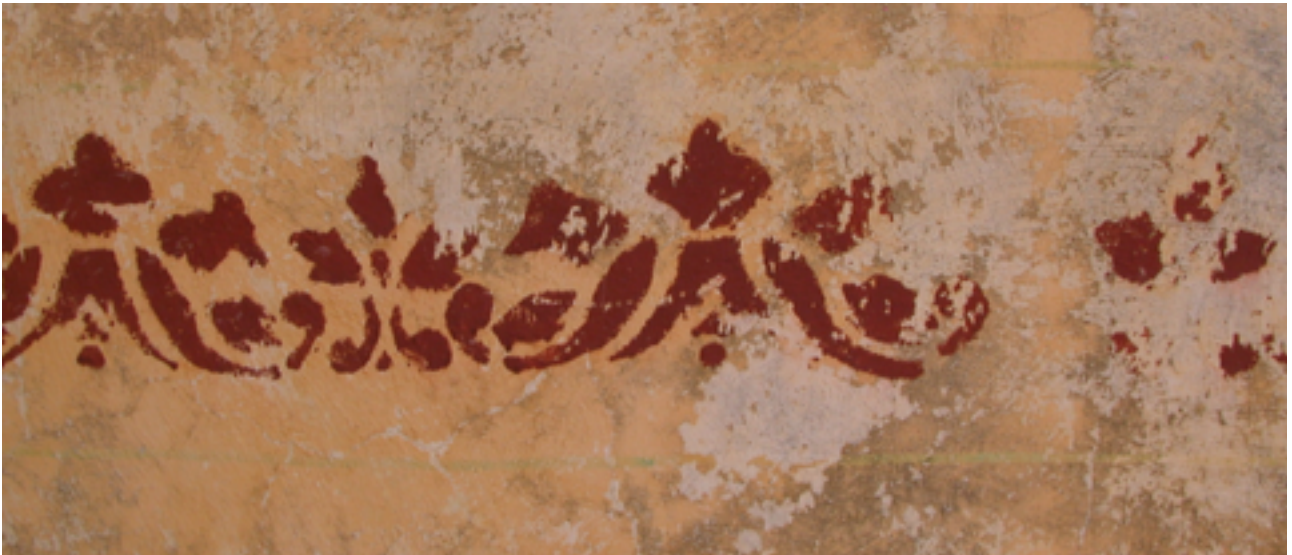
Figure 44. South wall of porteria walls, San Antonio de Padua, Izamal, Yucatan



Figure 45. Sour orange? trees painted in between and above the artium colonnade at San Antonio de Padua, Yucatan



Figures 46 and 47. Floral motif painted onto the entranceway from the atrium to the porteria, San Antonio de Padua, Izamal, Yucatan



Figures 48 and 49. Stylised relief of trees painted on to the walls facing the atrium courtyard. San Antonio de Padua, Izamal, Yucatan



Figure 50. Santa Barbara fresco on the atrium walls of San Antonio de Padua, Izamal



Figures 51 and 52. Cloister walls at the monastery of Divino Salvador, Malinalco, State of Mex



Figure 53. Madonna with Child Surrounded by Angels and Saints Freidano and Saint Augustin. Filippino Lippi circa 1437. Santo Spirito sacristy, Florence



Figure 54. Painted pillars in the atrium of San Antonio de Padua. Izamal, Yucatan

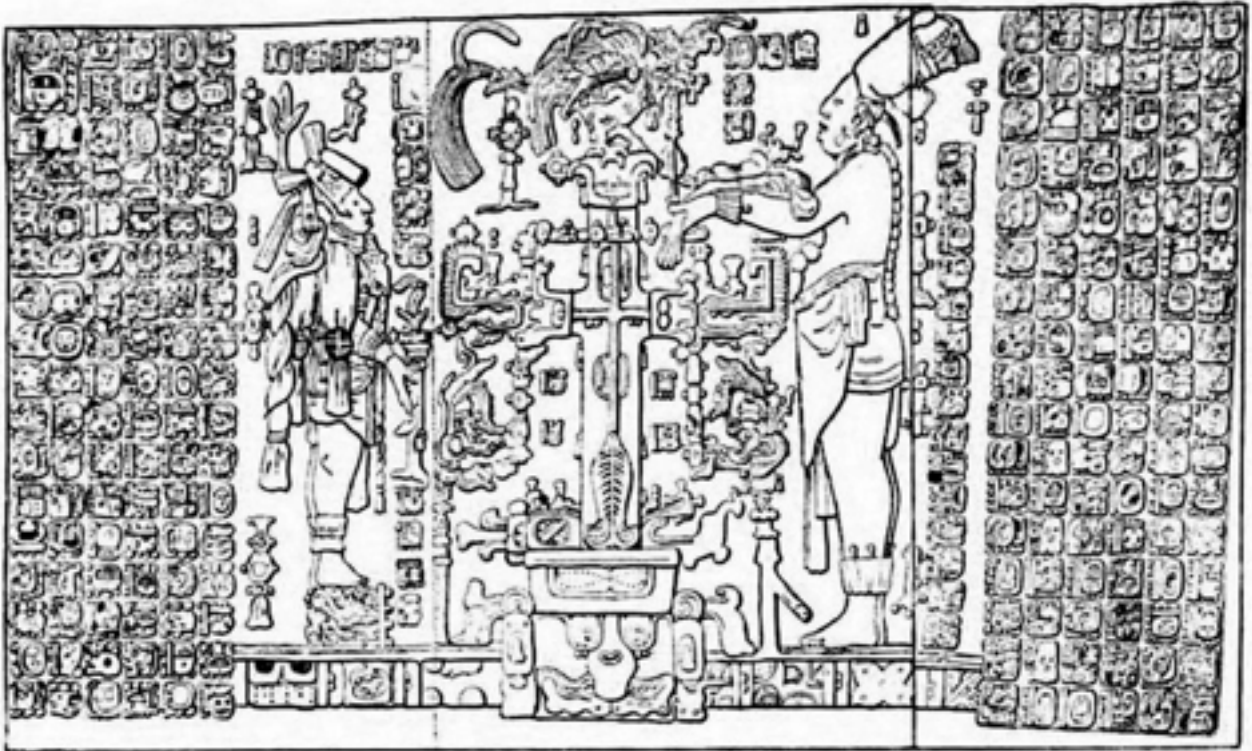


Figure 55. Relief tablet from Temple of the Cross, Palenque, Chiapas

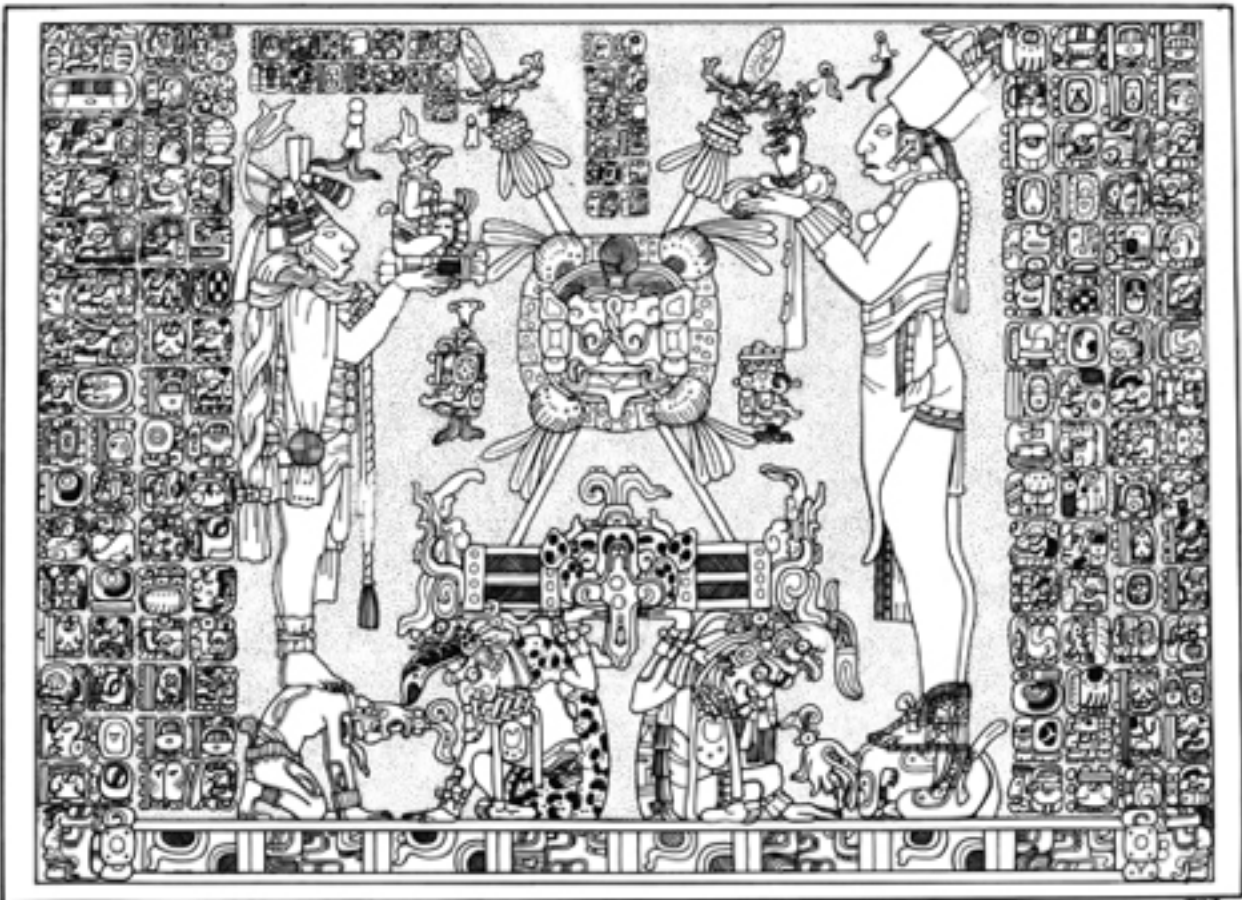


Figure 56. Relief tablet from Temple of the Sun, Palenque, Chiapas

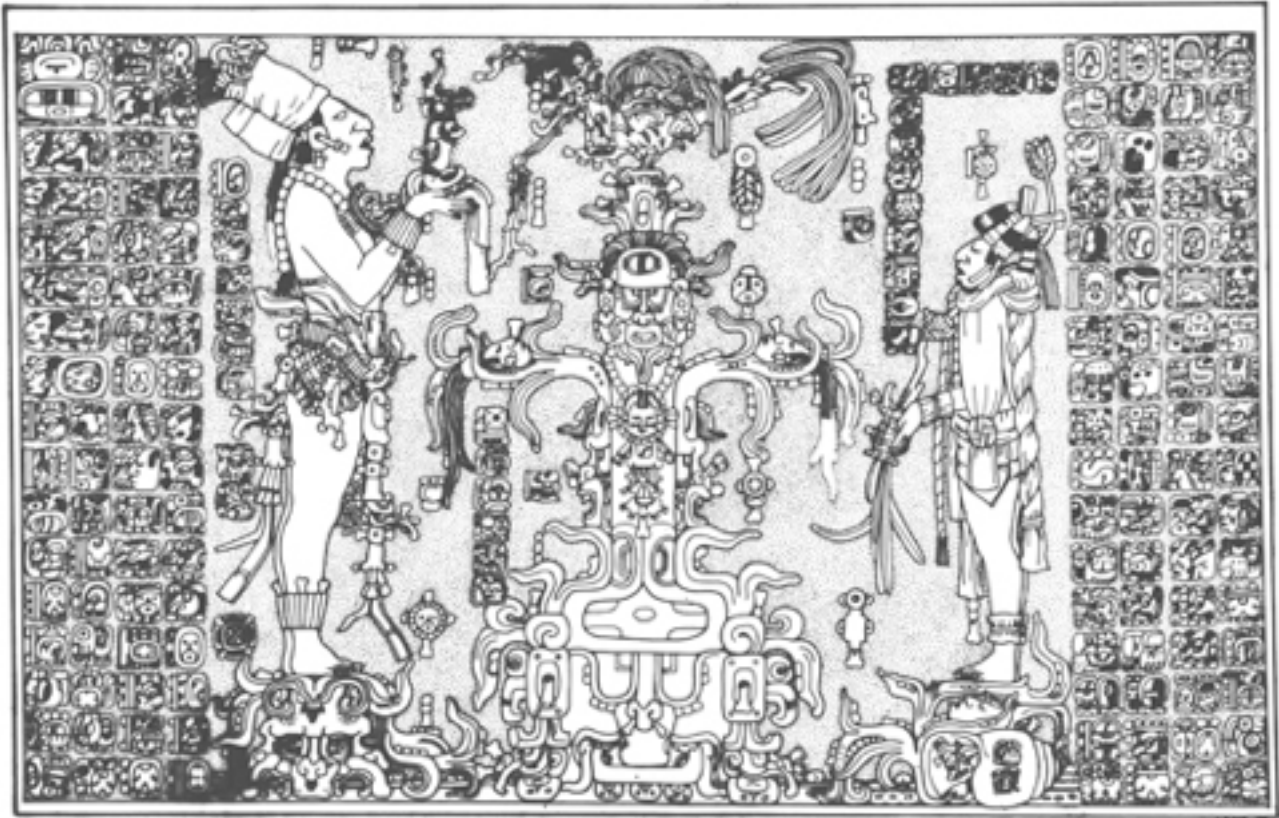


Figure 57. Relief tablet from the Temple of the Foliated Cross, Palenque, Chiapas

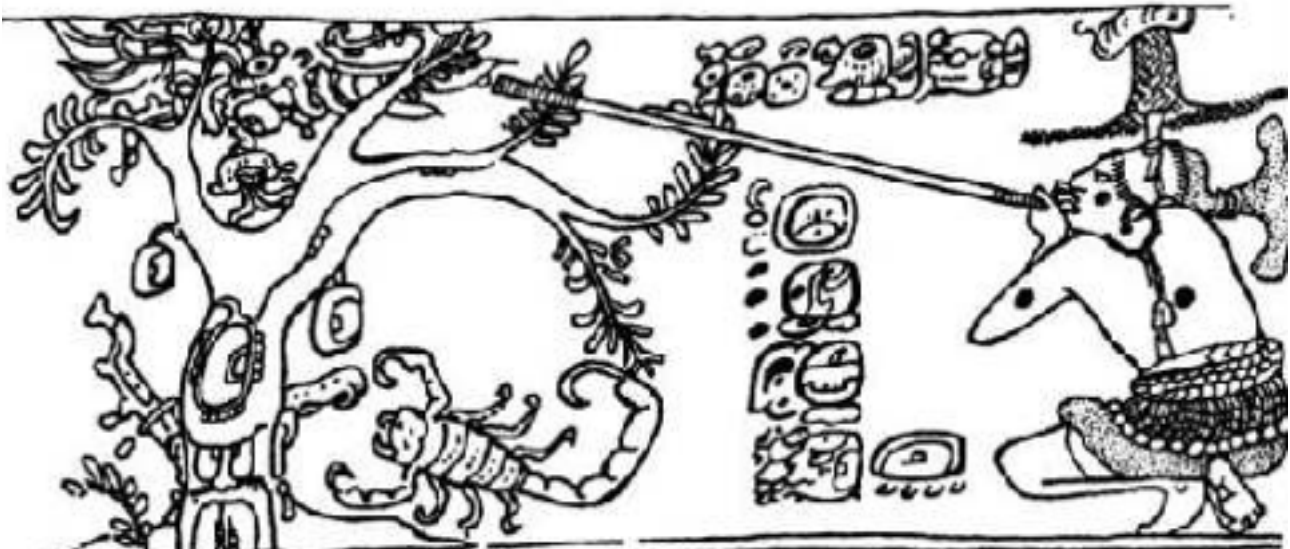


Figure 58. Blowgunner's pot showing Hunahpu shooting a bird from a tree



Figure 59. Lintel 24 from Structure 23, Yaxchilan, Chiapas



Figure 60. Lintel 25 from Structure 23, Yaxchilan, Chiapas



Figure 61. Lintel 26 from Structure 23, Yaxchilan, Chiapas



Figure 62. Black and white drawing of Lintel 24 showing the cross pattern in Lady Xook's huipil, Yaxchilan, Chiapas.



Figure 63. Detail from Lintel 26 showing frog pattern of Lady Xook's huipil, Yaxchilan, Chiapas



Figure 64. Detail of a blessing genie from Neo-Assyrian palace at Dur Sharrukin.



Figure 65. Frontal view of San Francisco de Asis, Yaxcaba, Yucatan



Figure 66. Solomonic columns at the Basilica of St. Paul cloister



Figure 67. Detail of an estipite from San Francisco Javier, Museo Nacional del Virreinato, Tepoztlan, State of Mexico



Figure 68. Retablo for La Candelaria from San Francisco de Asis, Yaxcaba, Yucatan



Figure 69. Retablo for La Purisima from San Francisco de Asis, Yaxcaba, Yucatan

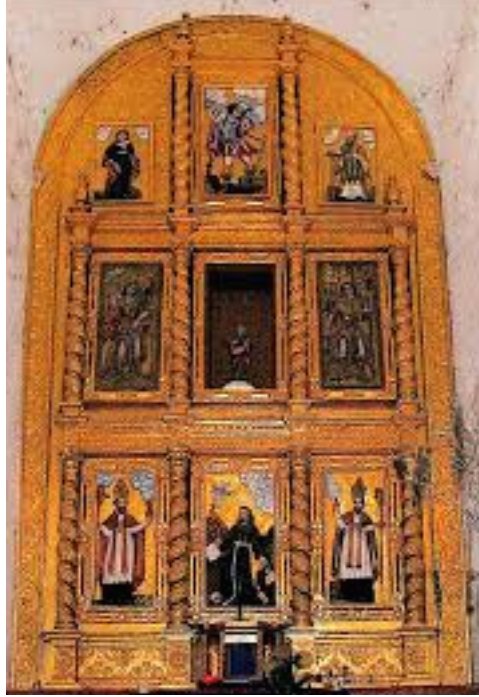


Figure 70. Gilded main retablo from San Francisco de Asis, Yaxcaba, Yucatan