

Cover Page



Universiteit Leiden



The handle <http://hdl.handle.net/1887/38522> holds various files of this Leiden University dissertation.

**Author:** Ewe, See Hooi

**Title:** Aortic valve disease : novel imaging insights from diagnosis to therapy

**Issue Date:** 2016-03-10



# Imaging and quantification of aortic regurgitation after TAVI

**Ewe SH**, Delgado V, Bax JJ.

*EuroIntervention. 2012 Sep;8 Suppl Q:Q21-30.*

# Imaging and quantification of aortic regurgitation after TAVI

See Hooi Ewe<sup>1,2</sup>, MBBS; Victoria Delgado<sup>1</sup>, MD, PhD; Jeroen J. Bax<sup>1\*</sup>, MD, PhD

*1. Department of Cardiology, Leiden University Medical Center, Leiden, The Netherlands; 2. Department of Cardiology, National Heart Centre, Singapore, Singapore*

## KEYWORDS

- aortic regurgitation
- transcatheter aortic valve implantation
- cardiac imaging

## Abstract

During the last decade, transcatheter aortic valve implantation (TAVI) techniques have evolved rapidly providing several systems that conform to a broad spectrum of aortic valve annulus sizes, developing new delivery systems that provide an alternative to patients with difficult vascular access and permitting more controlled and accurate prosthesis deployment that result in improved procedural outcomes. However, residual aortic regurgitation (AR) (paravalvular or transvalvular) remains a recurrent observation and patients with moderate or severe AR have a reduced mid-term prognosis. Therefore, postprocedural AR should be carefully and accurately evaluated in order to decide whether additional procedures such as re-ballooning or valve-in-valve are needed to reduce AR severity, and changes in AR at follow-up should be monitored. In the current review, the role of cardiac imaging to understand the mechanism underlying AR after TAVI and to quantify the severity of AR will be discussed.

## Introduction

Transcatheter aortic valve implantation (TAVI) is now an accepted standard of care for patients with symptomatic severe aortic stenosis (AS) who are not candidates for surgery or have high surgical risk. Over the past decade, the combined effect of learning curve, improvement in transcatheter device technology, a better understanding of aortic root anatomy, together with careful patient selection have gradually resulted in an improved clinical outcome for patients undergoing TAVI<sup>1</sup>. However, aortic regurgitation (AR) remains a common phenomenon following TAVI. Experience in large multicentre studies and registries, including over 6,000 patients, revealed that the incidence of AR after TAVI ranged from 48 to 93% of patients, with comparable prevalence between self- and balloon-expandable prostheses (Table 1)<sup>2-10</sup>. Trace or mild paravalvular AR is a common finding in the majority of patients, whereas only 14-21% of patients may have at least moderate AR following TAVI (Table 1)<sup>2-10</sup>. The observed variation in AR after TAVI may be related to the use of different modalities to assess AR (angiography, transoesophageal [TEE] or transthoracic [TTE] echocardiography), the different timing of AR assessment after TAVI (immediately post deployment, before hospital discharge and at 30-day follow-up) and the lack of a standardised protocol to grade AR severity (qualitative versus semi-quantitative methods). Accurate assessment of AR after TAVI is clinically relevant since

moderate and severe post-procedural AR have been associated with poor treatment response<sup>11</sup>, early in-hospital death<sup>2</sup> and mid-term mortality<sup>3,5,8,11</sup>. In addition, a recent report has suggested that residual AR grade >1 may also be associated with reduced survival<sup>12</sup>. Conversely, serial evaluations have shown that the severity of AR tends to reduce over time<sup>3,13,14</sup>. Current recommendations to characterise and quantify the severity of AR post TAVI include the morphology and location of the regurgitant jet, as well as the percentage of the circumference of the prosthesis occupied by the regurgitant jet. The value of cardiac imaging to evaluate the mechanisms underlying AR after TAVI and to quantify its severity will be discussed in this review.

## Mechanisms of AR after TAVI

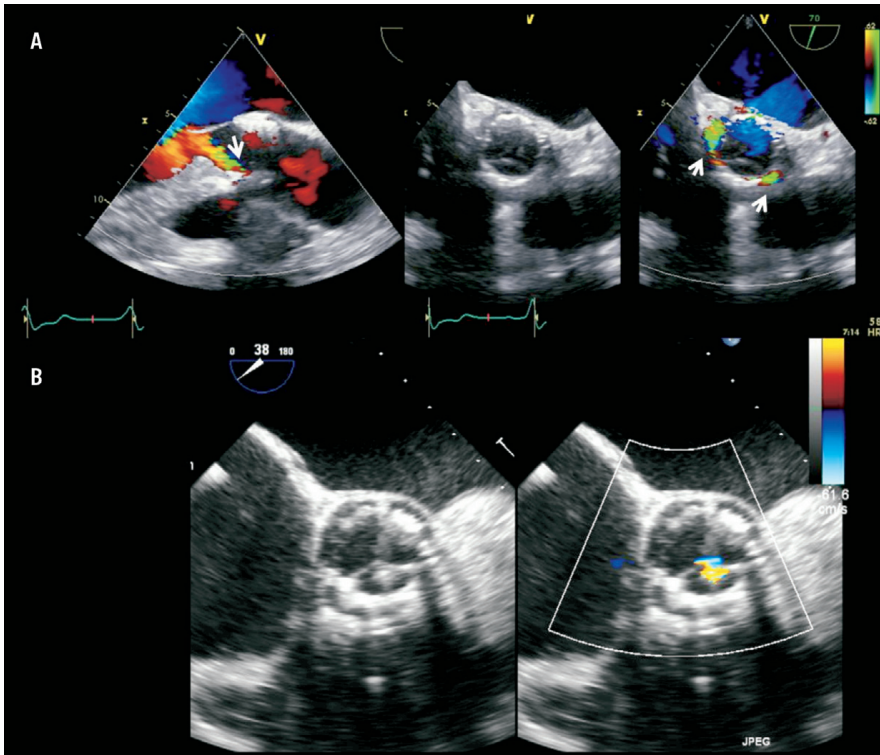
AR following TAVI can be categorised according to the location of the AR jet in relation to the prosthesis: either paravalvular AR (PAR) (between the prosthesis and the native annulus), transvalvular AR (TAR) (within the prosthesis) or both, and is best appreciated using colour-flow Doppler echocardiography (Figure 1).

PAR can be due to incomplete annular sealing of the transcatheter valve. With conventional aortic valve surgery the native aortic valve is removed and the prosthesis is sewn onto the decalcified annulus, but in TAVI the native calcified aortic leaflets are displaced to accommodate the newly implanted prosthesis. The

**Table 1. Prevalence of postprocedural aortic regurgitation after transcatheter aortic valve implantation.**

	Canadian registry <sup>6</sup>	SOURCE registry <sup>3,8</sup>	PARTNER B <sup>1</sup>	PARTNER A <sup>7</sup>	Unbehaun et al <sup>10</sup>	Tamburino et al <sup>9</sup>	UK-TAVI registry <sup>5</sup>	German-TAVI registry <sup>2</sup>	FRANCE 2 registry <sup>3</sup>
Time of recruitment, yr	Jan 2005 - Jun 2009	Nov 2007 - Jan 2009	May 2007 - Mar 2009	May 2007 - Aug 2009	Apr 2008 - Mar 2011	Jun 2007 - Dec 2009	Jan 2007 - Dec 2009	Jan 2009 - Dec 2009	Jan 2010 - Oct 2011
Patients, n	339	1,038	179	348	358	663	870	697	3,195
Edwards, %	100	100	100	100	100	—	47	15.6	67
CoreValve, %	—	—	—	—	—	100	52	84.4	33
Transfemoral, %	49	45	100	70	—	90	69	92	75
Non-transfemoral, %	51	55	—	30	100	10	31	8	25
AR assessment	TTE	TTE	TTE	TTE	Angio/TEE	TTE	Angio	Angio	TTE
Postprocedural any AR									
None, %	16	—	6	11	52	—	39	28	—
Trace/mild, %	78	—	78	76	47	—	47	55	—
Mod/severe, %	6	1.9	15	13	1	21	14	17	—
Postprocedural PAR									
None, %	—	—	14	23	—	—	—	—	38
Trace/mild, %	—	—	68	65	—	—	—	—	46
Mod/severe, %	—	—	12	12	—	21	14	—	16
Postprocedural TAR									
None, %	—	—	31	35	—	—	—	—	91
Trace/mild, %	—	—	67	64	—	—	—	—	8
Mod/severe, %	—	—	1	1	—	—	—	—	1

Angio: angiography; PAR: paravalvular aortic regurgitation; TAR: transvalvular aortic regurgitation; TEE: transoesophageal echocardiography; TTE: transthoracic echocardiography; yr: year  
\*Included only AR >grade 2 (severe AR).



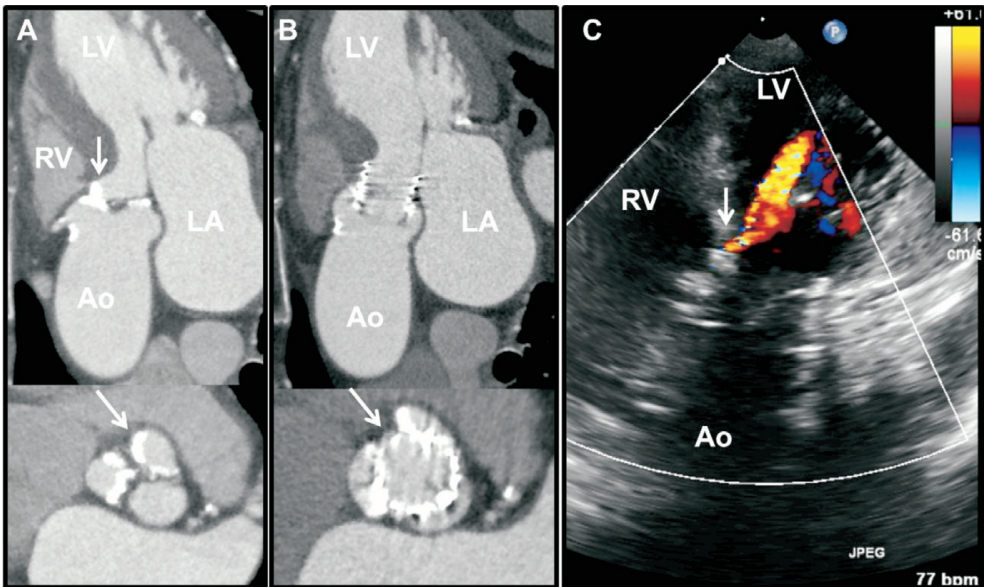
**Figure 1.** Panel A shows the long-axis view of the aortic root on conventional 2-D transoesophageal echocardiography of a patient who underwent transcatheter aortic valve implantation with a balloon-expandable valve. The arrow indicates the presence of mild paravalvular regurgitation at the level of the anterior part of the aortic annulus. The short-axis views show the exact location of the two jets of paravalvular regurgitation (arrows). Panel B shows a patient with transvalvular regurgitation, best noted on the short-axis view on transoesophageal echocardiography.

presence of asymmetrical/bulky aortic valve calcification has been related to the presence of PAR (**Figure 2**)<sup>10,15-18</sup>. Exact localisation of calcium in the aortic root and valve may predict PAR after TAVI<sup>19,20</sup>. Particularly, calcification of the commissures has been associated with PAR but calcification of the body or the edge of the aortic cusps did not increase the risk of PAR<sup>20,21</sup>. Other phenomena related to PAR include prosthesis undersizing<sup>18,22,23</sup>, bicuspid valve (asymmetrical expansion)<sup>24</sup>, incorrect depth of implantation (too high or low implantation without apposition to annular tissue) and an increased angle of the left ventricular outflow tract (LVOT) to the ascending aorta<sup>25</sup>. Multidetector row computed tomography is a valuable preprocedural imaging technique providing accurate sizing of the aortic annulus, precise characterisation of aortic valve anatomy and aortic root dimensions, and localisation of calcifications in the landing zone (**Figure 2**)<sup>20,22,23</sup>.

In contrast, TAR is less often observed and may arise from valvular obstruction (from stiff guidewire or pigtail catheter or an overhanging native leaflet resulting in improper leaflet closure)<sup>26,27</sup>, valvular damage (during crimping process or overexpansion following post-dilatation)<sup>26,28</sup> or prosthesis oversizing (suboptimal stent expansion or impaired leaflet mobility). Prompt recognition of TAR and its mechanism is crucial, so that appropriate interventions such as manipulation of catheter or implantation of a second prosthesis (valve-in-valve procedure) can be performed in a timely manner to ensure good clinical outcome.

### Imaging and quantification AR after TAVI

Currently, AR after TAVI is largely assessed using angiography, echocardiography or both. Using supra-aortic angiography, the degree of postprocedural AR is determined qualitatively by visual



**Figure 2.** Panel A shows a calcified tricuspid aortic valve of a patient with bulky calcification mainly in the non-coronary (arrow) and right cusps, and extending to the base of the interventricular septum (arrow) on multidetector computed tomography (MDCT). Following TAVI with a balloon-expandable (SAPIEN XT) valve, a paravalvular leak was observed with colour-coded Doppler transoesophageal echocardiography (TEE) that coincided with the location of the bulky calcification at the commissure between the right and non-coronary cusps on MDCT. Panel B shows the deployed frame and the arrow indicates the gap at the level of the commissure between the non-coronary and right cusps. Panel C shows the colour-coded Doppler TEE in a transgastric view with the paravalvular leak in the location of the calcification at right to non-coronary commissure.

estimation of the concentration of contrast medium (regurgitation volume) in the left ventricle (LV) and classified into four grades: absent (grade 0), trace or mild (grade 1), mild-to-moderate (grade 2), moderate-to-severe (grade 3) and severe (grade 4)<sup>29</sup>. Although this is a commonly used method of assessment during TAVI, it lacks accurate quantification and has limited sensitivity in differentiating PAR from TAR (Figure 3). Moreover, this modality is not preferred for serial AR evaluation after TAVI.

The other widely used method for AR assessment is echocardiography, and TEE is frequently performed to help guide transcatheter valve deployment and to detect complications during TAVI<sup>30</sup>. In addition, it permits assessment of the position and function of the prosthesis, including determination of the presence/severity and mechanism of AR immediately after valve deployment. In the setting of TAVI, it is critical to distinguish PAR from TAR and to determine its severity rapidly so as to allow for manoeuvres such as re-ballooning, attempting maximal expansion of the prosthesis in the presence of significant PAR or deployment of a second valve in the presence of severe TAR. Using the standard long- and short-axis

views of colour Doppler TEE, PAR and TAR can both be accurately detected. With the current three-dimensional matrix array TEE probes, simultaneous display of two orthogonal real-time images (biplane long- and short-axis views) with superimposed colour flow Doppler imaging allows further delineation and exact localisation of the PAR (Figure 4). However, accurate quantification of PAR remains challenging as it frequently consists of multiple small jets, origins of which may be obscured by the prosthesis stent/frame. Current recommendations for AR assessment after TAVI are derived from native valvular regurgitation, using multi-parametric approaches (Table 2)<sup>31,32</sup>. In the setting of TAVI, modifications are required as the grading for PAR differs from that of TAR, with emphasis on the “jet anatomy” classification. For example, the width of the proximal AR jet relative to the LVOT diameter is the suggested criterion for semi-quantitative assessment of TAR severity (Figure 5). In contrast, as PAR is frequently eccentric and irregular in shape, the proportion of the circumference of the prosthesis covered by the AR jet provides semi-quantitative assessment of PAR severity. However, this approach does not take into considera-

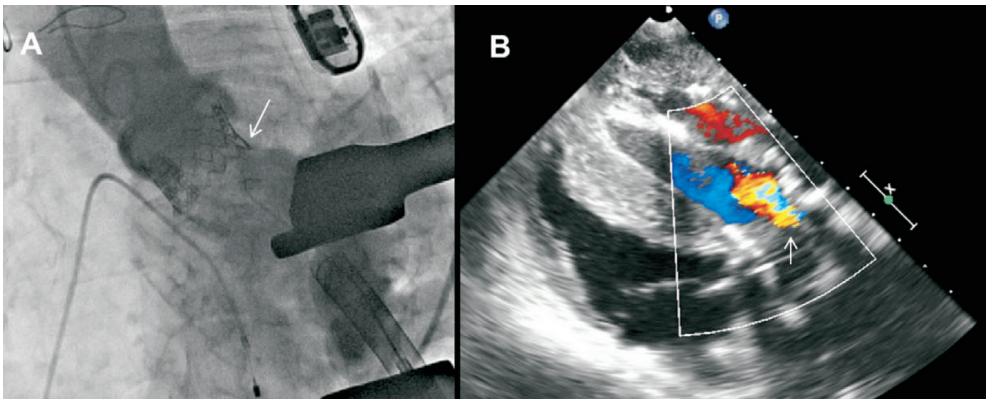
**Table 2. Recommended criteria for aortic regurgitation (paravalvular and transvalvular) after transcatheter aortic valve implantation.**

Parameter	Mild	Moderate	Severe
Valve structure and motion	Usually normal	Usually abnormal	Usually abnormal
Left ventricular size	Normal	Normal/mildly dilated	Dilated
Doppler parameters (qualitative or semi-quantitative)			
Jet width in central jets (%LVOT): colour <sup>a</sup>	≤25%	26-64%	≥65%
Jet density: continuous-wave	Incomplete or faint	Dense	Dense
Jet deceleration rate (PHT, ms): continuous-wave <sup>b</sup>	Slow (>500 ms)	Variable (200-500 ms)	Steep (<200 ms)
LVOT versus pulmonary flow: pulsed-wave	Slightly increased	Intermediate	Greatly increased
Diastolic flow reversal in descending aorta: pulsed-wave	Absent or brief early diastolic	Intermediate	Prominent/holodiastolic
Circumferential extent of paravalvular leak (%): colour <sup>c</sup>	10-20	10-20	>20
Doppler parameters (quantitative)			
Regurgitant volume (mL)	<30	30-59	>60
Regurgitant fraction (%)	<30	30-50	>50

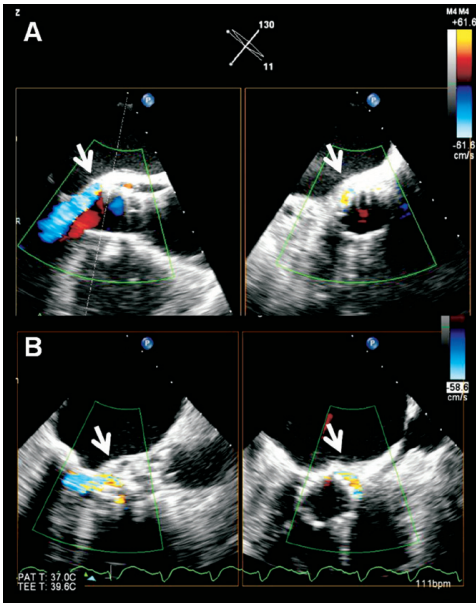
LVOT: left ventricular outflow tract; PHT: pressure half time; <sup>a</sup>parameter applicable to central jets (less accurate in eccentric jets); <sup>b</sup>parameter influenced by left ventricular compliance; <sup>c</sup>for paravalvular aortic regurgitation

tion the presence of multiple jets (unknown validity of summation of all the jets) and the possible contamination from the radial extent of PAR jets, which may result in overestimation of the AR severity<sup>32</sup>. Finally, with the currently available 3-D colour full volume echocardiographic data sets, direct planimetry of the AR vena contracta may provide an accurate quantitative assessment of AR severity (**Figure 5**). Recently, Goncalves and co-workers showed that quantitative assessment of PAR after TAVI was feasible by planimetry of the vena contracta obtained with 3-D TTE<sup>33</sup>. The 3-D approach provided a better correlation between the AR volume and the vena contracta as compared to 2-D TTE.

Localisation of the PAR based on the standard parasternal short-axis TTE view of the aortic prosthesis is possible. In addition to a direct measurement of the vena contracta<sup>33</sup>, 3-D TTE may provide a more accurate calculation of the total stroke volume (both the regurgitant and forward stroke volumes) by subtracting LV end-systolic from LV end-diastolic volumes<sup>34</sup>. In the absence of significant mitral regurgitation, this method may be highly accurate since it is independent of geometric assumptions and is not hampered by foreshortened views. Therefore, 3-D echocardiography may become the method of choice for assessing complicated AR such as that following TAVI, although it requires further validation before widespread implementation in clinical routine.



**Figure 3.** Assessment of aortic regurgitation (AR) after TAVI. Panel A shows supra-aortic angiography to estimate the AR grade. In contrast to echocardiography, angiography has limited resolution to differentiate between paravalvular and transvalvular AR. Panel B shows the TEE 120° transgastric view of the same patient. The arrow indicates the presence of a wide regurgitant jet in the valve due to a frozen cusp.



**Figure 4.** Current 3-D transoesophageal probes permit simultaneous visualisation of the transcatheter aortic valve in orthogonal (long- and short-axis) views to exactly localise the paravalvular leak. The arrows indicate that the paravalvular leak is located at the posterior part of the aortic annulus, close to the anterior mitral valve leaflet. The paravalvular leak is mild in severity as it occupies <10% of the circumference of the prosthetic valve (A) and is moderate in severity as it occupies 10–20% of the circumference of the prosthetic valve (B).

The feasibility of magnetic resonance imaging (MRI) for quantification of AR post TAVI has been evaluated: particularly velocity-encoded phase imaging permits measurement of blood flow velocity and volume across the valve and calculation of the regurgi-

tant fraction (ratio of forward to backflow volume across the valve). A recent study including 16 patients who underwent MRI following TAVI demonstrated a significant correlation between MRI-derived and angiography-estimated degree of AR ( $r=0.86$ ,  $p<0.001$ ) while only a limited correlation between MRI and 2-D TTE was observed ( $r=0.32$ ,  $p=0.23$ )<sup>35</sup>. Moreover, TTE underestimated AR by at least one grade when compared to MRI in 44% of patients, indicating the limitations of 2-D imaging for assessment of eccentric AR, in particular PAR post-TAVI<sup>35</sup>.

### Experience of AR assessment after TAVI and when to measure

Acute postprocedural evaluation of AR after TAVI is crucial since the presence of moderate and severe AR is associated with increased mortality at follow-up and several manoeuvres can be performed at the catheterisation laboratory/hybrid operating theatre to reduce the severity of AR. In addition, the presence of AR should be monitored during the days after TAVI since the regurgitation grade may change (Table 3). For example, the properties of the self-expandable prosthesis may lead to a reduction in the grade of PAR at follow-up. In 126 patients undergoing TAVI with self-expandable prostheses, Buellesfeld et al reported a reduction in the prevalence of PAR of any grade from 41% at 30 days after TAVI to 37% at two-year follow-up<sup>13</sup>. Experience with the balloon-expandable prostheses has also shown a progressive reduction in the prevalence of AR after TAVI. In the PARTNER cohort A trial, AR improved in 31.5% of patients at two-year follow-up<sup>14</sup>. Conversely, in the FRANCE 2 registry with 3,195 patients, the prevalence of AR remained unchanged at one-year follow-up<sup>3</sup>.

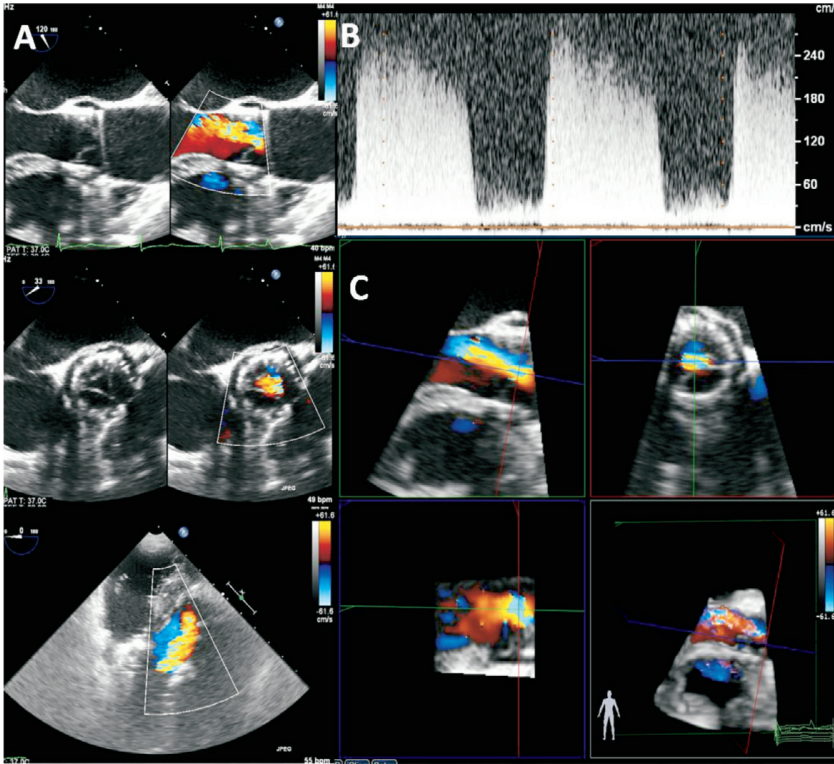
Anatomo-pathological analyses of explanted self-expandable prostheses have demonstrated neointimal coverage of the frame struts in contact with the aortic wall but not in areas of high velocity blood flow such as the coronary ostia<sup>36</sup>. This neointimal tissue may be beneficial in reducing the grade of PAR by closing the gaps between the prosthetic frame and the native annulus. However, it has been suggested that, in specific circumstances, this tissue proliferation may lead to more rapid structural valve deterioration. So far, structural valve deterioration is anecdotal<sup>37,38</sup> and other complications such as stent fracture, deformation or valve migration have not been described.

**Table 3.** Progression of aortic regurgitation after transcatheter aortic valve implantation.

	Patients, n	CoreLab	Prosthesis	AR, % (none / trace-mild / moderate-severe)			
				Postprocedure	1-year	2-year	3-year
REVIVAL <sup>40</sup>	84	Yes	Edwards 100%	20 / 37 / 23	9 / 22 / 18	4 / 6 / 12	2 / 4 / 8
PARTNER B <sup>41</sup>	179	Yes	Edwards 100%	6 / 78 / 15	11 / 71 / 15	34 / 61 / 5	–
PARTNER A <sup>14</sup>	348	Yes	Edwards 100%	11 / 76 / 13	13 / 80 / 7	32 / 6 / 7	–
Buellesfeld et al <sup>13</sup>	126	No	CoreValve 100%	59 / 32 / 9	63 / 34 / 3	63 / 37 / 0	–
Ussia et al <sup>42</sup>	181	No	CoreValve 100%	32 / 53 / 15	34 / 48 / 18	–	43 / 47 / 10
Gilard et al <sup>3</sup>	3,195	No	Edwards 67% CoreValve 33%	38 / 46 / 16	33 / 47 / 20	–	–

AR: aortic regurgitation





**Figure 5.** An example of moderate-to-severe transvalvular aortic regurgitation (AR) after TAVI, assessed semi-quantitatively using Doppler parameters: a jet width that occupied 45% of the LVOT diameter (A), a dense CW Doppler signal and a steep jet deceleration rate (B). 3-dimensional colour-coded Doppler permits quantitative evaluation of AR using multiplanar reconstruction by planimetry of the regurgitant vena contracta area (C), which is performed by selecting the best frame to visualise the AR jet. The 3-D dataset was manually cropped to provide a cross-sectional plane through the vena contracta of the AR jet, perpendicular to the direction of the jet. From the en face view of the vena contracta and selecting the plane with the narrowest cross-sectional area of the regurgitant jet, planimetry of the vena contracta can be performed.

## Conclusions

AR after TAVI has been associated with worse outcome and increased mortality at follow-up. Accurate assessment of AR during the procedure is crucial to decide whether additional manoeuvres such as re-balloon or valve-in-valve are needed to reduce the AR grade. Supra-aortic angiography or echocardiography (particularly 3-D TEE) are the preferred imaging techniques to assess AR immediately after valve deployment. In addition, continued evaluation of AR at follow-up is recommended since the grade of AR may change over time. For follow-up assessment, transthoracic echocardiography, particularly 3-D TTE, is the preferred imaging technique.

## Conflict of interest statement

V. Delgado received consulting fees from Medtronic and St. Jude Medical. The Department of Cardiology received research grants from Lantheus Medical Imaging, Boston Scientific, Sadra Lotus, Medtronic, St. Jude Medical, Biotronik, Edwards Lifesciences and GE Healthcare. The other authors have no conflicts of interest to declare.

## References

1. Webb JG, Wood DA. Current status of transcatheter aortic valve replacement. *J Am Coll Cardiol.* 2012;60:483-92.
2. Abdel-Wahab M, Zahn R, Horack M, Gerckens U, Schuler G, Sievert H, Eggebrecht H, Senges J, Richardt G; German transcath-

- eter aortic valve interventions registry investigators. Aortic regurgitation after transcatheter aortic valve implantation: incidence and early outcome. Results from the German transcatheter aortic valve interventions registry. *Heart*. 2011;97:899-906.
3. Gilard M, Eltchaninoff H, Iung B, Donzeau-Gogue P, Chevrel K, Fajadet J, Leprince P, Leguerrier A, Lievre M, Prat A, Teiger E, Lefevre T, Humbert D, Tchetché D, Carrié D, Albat B, Cribrier A, Rioufol G, Sudre A, Blanchard D, Collet F, Dos Santos P, Meneveau N, Tirouvanziam A, Caussin C, Guyon P, Bosch J, Le Breton H, Collart F, Houel R, Delpine S, Souteyrand G, Favereau X, Ohlmann P, Doisy V, Grollier G, Gommeaux A, Claudel JP, Bourlon F, Bertrand B, Van Belle E, Laskar M; FRANCE 2 Investigators. Registry of transcatheter aortic-valve implantation in high-risk patients. *N Engl J Med*. 2012;366:1705-15.
  4. Leon MB, Smith CR, Mack M, Miller DC, Moses JW, Svensson LG, Tuzcu EM, Webb JG, Fontana GP, Makkar RR, Brown DL, Block PC, Guyton RA, Pichard AD, Bavaria JE, Herrmann HC, Douglas PS, Petersen JL, Akin JJ, Anderson WN, Wang D, Pocock S; PARTNER Trial Investigators. Transcatheter aortic-valve implantation for aortic stenosis in patients who cannot undergo surgery. *N Engl J Med*. 2010;363:1597-607.
  5. Moat NE, Ludman P, de Belder MA, Bridgewater B, Cunningham AD, Young CP, Thomas M, Kovac J, Spyt T, MacCarthy PA, Wendler O, Hildick-Smith D, Davies SW, Trivedi U, Blackman DJ, Levy RD, Brecker SJ, Baumbach A, Daniel T, Gray H, Mullen MJ. Long-term outcomes after transcatheter aortic valve implantation in high-risk patients with severe aortic stenosis: the U.K. TAVI (United Kingdom Transcatheter Aortic Valve Implantation) Registry. *J Am Coll Cardiol*. 2011;58:2130-8.
  6. Rodés-Cabau J, Webb JG, Cheung A, Ye J, Dumont E, Feindel CM, Osten M, Natarajan MK, Velianou JL, Martucci G, DeVarennes B, Chisholm R, Peterson MD, Lichtenstein SV, Nietispach F, Doyle D, DeLarochelière R, Teoh K, Chu V, Dancă A, Lachapelle K, Cheema A, Latter D, Horlick E. Transcatheter aortic valve implantation for the treatment of severe symptomatic aortic stenosis in patients at very high or prohibitive surgical risk: acute and late outcomes of the multicenter Canadian experience. *J Am Coll Cardiol*. 2010;55:1080-90.
  7. Smith CR, Leon MB, Mack MJ, Miller DC, Moses JW, Svensson LG, Tuzcu EM, Webb JG, Fontana GP, Makkar RR, Williams M, Dewey T, Kapadia S, Babaliaros V, Thourani VH, Corso P, Pichard AD, Bavaria JE, Herrmann HC, Akin JJ, Anderson WN, Wang D, Pocock SJ; PARTNER Trial Investigators. Transcatheter versus surgical aortic-valve replacement in high-risk patients. *N Engl J Med*. 2011;364:2187-98.
  8. Tamburino C, Capodanno D, Ramondo A, Petronio AS, Etori F, Santoro G, Klugmann S, Bedogni F, Maisano F, Marzocchi A, Poli A, Antonucci D, Napodano M, De Carlo M, Fiorina C, Ussia GP. Incidence and predictors of early and late mortality after transcatheter aortic valve implantation in 663 patients with severe aortic stenosis. *Circulation*. 2011;123:299-308.
  9. Thomas M, Schymik G, Walther T, Humbert D, Lefèvre T, Treede H, Eggebrecht H, Rubino P, Colombo A, Lange R, Schwarz RR, Wendler O. One-year outcomes of cohort I in the Edwards SAPIEN Aortic Bioprosthesis European Outcome (SOURCE) registry: the European registry of transcatheter aortic valve implantation using the Edwards SAPIEN valve. *Circulation*. 2011;124:425-33.
  10. Unbehaun A, Pasic M, Dreyse S, Drews T, Kukucka M, Mladenow A, Ivanitskaja-Kühn E, Hetzer R, Buz S. Transapical aortic valve implantation incidence and predictors of paravalvular leakage and transvalvular regurgitation in a series of 358 patients. *J Am Coll Cardiol*. 2012;59:211-21.
  11. Gotzmann M, Pljakic A, Bojara W, Lindstaedt M, Ewers A, Germing A, Mügge A. Transcatheter aortic valve implantation in patients with severe symptomatic aortic valve stenosis-predictors of mortality and poor treatment response. *Am Heart J*. 2011;162:238-245.e1.
  12. Sponga S, Perron J, Dagenais F, Mohammadi S, Baillet R, Doyle D, Nalli C, Voisine P. Impact of residual regurgitation after aortic valve replacement. *Eur J Cardiothorac Surg*. 2012;42:486-92.
  13. Buellesfeld L, Gerckens U, Schuler G, Bonan R, Kovac J, Serruys PW, Labinaz M, den Heijer P, Mullen M, Tymchak W, Windecker S, Mueller R, Grube E. 2-year follow-up of patients undergoing transcatheter aortic valve implantation using a self-expanding valve prosthesis. *J Am Coll Cardiol*. 2011;57:1650-7.
  14. Kodali SK, Williams MR, Smith CR, Svensson LG, Webb JG, Makkar RR, Fontana GP, Dewey TM, Thourani VH, Pichard AD, Fischbein M, Szeto WY, Lim S, Greason KL, Teirstein PS, Malaisrie SC, Douglas PS, Hahn RT, Whisenant B, Zajarias A, Wang D, Akin JJ, Anderson WN, Leon MB; PARTNER Trial Investigators. Two-year outcomes after transcatheter or surgical aortic-valve replacement. *N Engl J Med*. 2012;366:1686-95.
  15. Delgado V, Ng AC, van de Veire NR, van der Kley F, Schuijff JD, Tops LF, de Weger A, Tavilla G, de Roos A, Kroft LJ, Schalij MJ, Bax JJ. Transcatheter aortic valve implantation: role of multi-detector row computed tomography to evaluate prosthesis positioning and deployment in relation to valve function. *Eur Heart J*. 2010;31:1114-23.
  16. Haensig M, Lehmkühl L, Rastan AJ, Kempfert J, Mukherjee C, Gutberlet M, Holzhey DM, Mohr FW. Aortic valve calcium scoring is a predictor of significant paravalvular aortic insufficiency in transapical-aortic valve implantation. *Eur J Cardiothorac Surg*. 2012;41:1234-40.
  17. John D, Buellesfeld L, Yucel S, Mueller R, Latsios G, Beucher H, Gerckens U, Grube E. Correlation of Device landing zone calcification and acute procedural success in patients undergoing transcatheter aortic valve implantations with the self-expanding CoreValve prosthesis. *JACC Cardiovasc Interv*. 2010;3:233-43.
  18. Schultz CJ, Tzikas A, Moelker A, Rossi A, Nuis RJ, Geleijnse MM, van Mieghem N, Krestin GP, de Feyter P, Serruys PW, de Jaegere PP. Correlates on MSCT of paravalvular aortic regurgitation after transcatheter aortic valve implantation using the medtronic CoreValve prosthesis. *Catheter Cardiovasc Interv*. 2011;78:446-55.
  19. Colli A, D'Amico R, Kempfert J, Borger MA, Mohr FW, Walther T. Transesophageal echocardiographic scoring for tran-

scatheter aortic valve implantation: impact of aortic cusp calcification on postoperative aortic regurgitation. *J Thorac Cardiovasc Surg.* 2011;142:1229-35.

20. Ewe SH, Ng AC, Schuijf JD, van der Kley F, Colli A, Palmen M, de Weger A, Marsan NA, Holman ER, de Roos A, Schalij MJ, Bax JJ, Delgado V. Location and severity of aortic valve calcium and implications for aortic regurgitation after transcatheter aortic valve implantation. *Am J Cardiol.* 2011;108:1470-7.

21. Gripari P, Ewe SH, Fusini L, Muratori M, Ng AC, Cefalù C, Delgado V, Schalij MJ, Bax JJ, Marsan NA, Tamborini G, Pepi M. Intraoperative 2D and 3D transoesophageal echocardiographic predictors of aortic regurgitation after transcatheter aortic valve implantation. *Heart.* 2012;98:1229-36.

22. Jilaihawi H, Kashif M, Fontana G, Furugen A, Shiota T, Friede G, Makhija R, Doctor N, Leon MB, Makkar RR. Cross-sectional computed tomographic assessment improves accuracy of aortic annular sizing for transcatheter aortic valve replacement and reduces the incidence of paravalvular aortic regurgitation. *J Am Coll Cardiol.* 2012;59:1275-86.

23. Willson AB, Webb JG, Labounty TM, Achenbach S, Moss R, Wheeler M, Thompson C, Min JK, Gurvitch R, Norgaard BL, Hague CJ, Toggweiler S, Binder R, Freeman M, Poulter R, Poulsen S, Wood DA, Leipsic J. 3-dimensional aortic annular assessment by multidetector computed tomography predicts moderate or severe paravalvular regurgitation after transcatheter aortic valve replacement: a multicenter retrospective analysis. *J Am Coll Cardiol.* 2012;59:1287-94.

24. Himbert D, Pontnau F, Messika-Zeitoun D, Descoutures F, Détaint D, Cuffe C, Sordi M, Laissy JP, Alkhoder S, Brochet E, Iung B, Depoix JP, Nataf P, Vahanian A. Feasibility and Outcomes of Transcatheter Aortic Valve Implantation in High-Risk Patients With Stenotic Bicuspid Aortic Valves. *Am J Cardiol.* 2012;110:877-83.

25. Sherif MA, Abdel-Wahab M, Stöcker B, Geist V, Richardt D, Tölg R, Richardt G. Anatomic and procedural predictors of paravalvular aortic regurgitation after implantation of the Medtronic CoreValve bioprosthesis. *J Am Coll Cardiol.* 2010;56:1623-9.

26. Giri J, Bortnick AE, Wallen T, Walsh E, Bannan A, Desai N, Szeto WY, Bavaria J, Herrmann HC. Procedural and clinical outcomes of the valve-in-valve technique for severe aortic insufficiency after balloon-expandable transcatheter aortic valve replacement. *Catheter Cardiovasc Interv.* 2012;80:139-47.

27. Toggweiler S, Wood DA, Rodés-Cabau J, Kapadia S, Willson AB, Ye J, Cheung A, Leipsic J, Binder RK, Gurvitch R, Freeman M, Thompson CR, Svensson LG, Dumont E, Tuzcu EM, Webb JG. Transcatheter valve-in-valve implantation for failed balloon-expandable transcatheter aortic valves. *JACC Cardiovasc Interv.* 2012;5:571-7.

28. Al-Attar N, Himbert D, Vahanian A, Nataf P. Severe intraprostatic regurgitation by immobile leaflet after transcatheter aortic valve implantation. *Eur J Cardiothorac Surg.* 2011;39:591-2.

29. Sellers RD, Levy MJ, Amplatz K, Lillehei CW. Left retrograde cardioangiography in acquired cardiac disease: technic,

indications and interpretations in 700 cases. *Am J Cardiol.* 1964;14:437-47.

30. Moss RR, Ivens E, Pasupati S, Humphries K, Thompson CR, Munt B, Sinhal A, Webb JG. Role of echocardiography in percutaneous aortic valve implantation. *JACC Cardiovasc Imaging.* 2008;1:15-24.

31. Leon MB, Piazza N, Nikolsky E, Blackstone EH, Cutlip DE, Kappetein AP, Krucoff MW, Mack M, Mehran R, Miller C, Morel MA, Petersen J, Popma JJ, Takkenberg JJ, Vahanian A, van Es GA, Vranckx P, Webb JG, Windecker S, Serruys PW. Standardized endpoint definitions for transcatheter aortic valve implantation clinical trials: a consensus report from the Valve Academic Research Consortium. *Eur Heart J.* 2011;32:205-17.

32. Zamorano JL, Badano LP, Bruce C, Chan KL, Gonçalves A, Hahn RT, Keane MG, LaCanna G, Monaghan MJ, Nihoyannopoulos P, Silvestry FE, Vanoverschelde JL, Gillam LD. EAE/ASE recommendations for the use of echocardiography in new transcatheter interventions for valvular heart disease. *J Am Soc Echocardiogr.* 2011;24:937-65.

33. Gonçalves A, Almeria C, Marcos-Alberca P, Feltes G, Hernández-Antolin R, Rodríguez E, Cardoso JC, Macaya C, Zamorano JL. Three-dimensional echocardiography in paravalvular aortic regurgitation assessment after transcatheter aortic valve implantation. *J Am Soc Echocardiogr.* 2012;25:47-55.

34. Lang RM, Badano LP, Tsang W, Adams DH, Agricola E, Buck T, Faletra FF, Franke A, Hung J, de Isla LP, Kamp O, Kasprzak JD, Lancellotti P, Marwick TH, McCulloch ML, Monaghan MJ, Nihoyannopoulos P, Pandian NG, Pellikka PA, Pepi M, Roberson DA, Shernan SK, Shirali GS, Sugeng L, Ten Cate FJ, Vannan MA, Zamorano JL, Zoghbi WA; American Society of Echocardiography; European Association of Echocardiography. EAE/ASE recommendations for image acquisition and display using three-dimensional echocardiography. *J Am Soc Echocardiogr.* 2012;25:3-46.

35. Sherif MA, Abdel-Wahab M, Beurich HW, Stöcker B, Zachow D, Geist V, Tölg R, Richardt G. Haemodynamic evaluation of aortic regurgitation after transcatheter aortic valve implantation using cardiovascular magnetic resonance. *EuroIntervention.* 2011;7:57-63.

36. Noble S, Asgar A, Cartier R, Virmani R, Bonan R. Anatomopathological analysis after CoreValve Revalving system implantation. *EuroIntervention.* 2009;5:78-85.

37. Hammerstingl C, Nickenig G, Grube E. Treatment of a degenerative stenosed CoreValve® aortic bioprosthesis by transcatheter valve-in-valve insertion. *Catheter Cardiovasc Interv.* 2012;79:748-55.

38. Trepels T, Martens S, Doss M, Fichtlscherer S, Schächinger V. Images in cardiovascular medicine. Thrombotic restenosis after minimally invasive implantation of aortic valve stent. *Circulation.* 2009;120:e23-e24.

39. Thomas M, Schymik G, Walther T, Himbert D, Lefèvre T, Treede H, Eggebrecht H, Rubino P, Michev I, Lange R, Anderson WN, Wendler O. Thirty-day results of the SAPIEN aortic Bioprosthesis European Outcome (SOURCE) Registry: A European registry of transcatheter aortic valve implantation using the Edwards SAPIEN valve. *Circulation.* 2010;122:62-9.

40. Yared K, Garcia-Camarero T, Fernandez-Friera L, Llano M, Durst R, Reddy AA, O'Neill WW, Picard MH. Impact of aortic regurgitation after transcatheter aortic valve implantation: results from the REVIVAL trial. *JACC Cardiovasc Imaging*. 2012;5:469-77.
41. Makkar RR, Fontana GP, Jilaihawi H, Kapadia S, Pichard AD, Douglas PS, Thourani VH, Babaliaros VC, Webb JG, Herrmann HC, Bavaria JE, Kodali S, Brown DL, Bowers B, Dewey TM, Svensson LG, Tuzcu M, Moses JW, Williams MR, Siegel RJ, Akin JJ, Anderson WN, Pocock S, Smith CR, Leon MB; PARTNER Trial Investigators. Transcatheter aortic-valve replacement for inoperable severe aortic stenosis. *N Engl J Med*. 2012;366:1696-704.
42. Ussia GP, Barbanti M, Petronio AS, Tarantini G, Etori F, Colombo A, Violini R, Ramondo A, Santoro G, Klugmann S, Bedogni F, Maisano F, Marzocchi A, Poli A, De Carlo M, Napodano M, Fiorina C, De Marco F, Antoniucci D, de Cillis E, Capodanno D, Tamburino C; CoreValve Italian Registry Investigators. Transcatheter aortic valve implantation: 3-year outcomes of self-expanding CoreValve prosthesis. *Eur Heart J*. 2012;110:877-83.

