



Universiteit
Leiden
The Netherlands

The role of clinical, pathological and molecular characteristics in colorectal cancer management

Bruin, S.C.

Citation

Bruin, S. C. (2013, September 26). *The role of clinical, pathological and molecular characteristics in colorectal cancer management*. Retrieved from <https://hdl.handle.net/1887/21797>

Version: Corrected Publisher's Version

License: [Licence agreement concerning inclusion of doctoral thesis in the Institutional Repository of the University of Leiden](#)

Downloaded from: <https://hdl.handle.net/1887/21797>

Note: To cite this publication please use the final published version (if applicable).

Cover Page



Universiteit Leiden



The handle <http://hdl.handle.net/1887/21797> holds various files of this Leiden University dissertation.

Author: Bruin, Sjoerd Cornelis

Title: The role of clinical, pathological and molecular characteristics in colorectal cancer management

Issue Date: 2013-09-26



Introduction

Pathogenesis of Colorectal Cancer

General

Colorectal cancer (CRC) is the second leading cause of cancer death in the Western world. The WHO estimates that 945.000 new cases occur yearly, with 492.000 deaths^{1,2}. Colorectal cancer is placed third after lung and breast cancer. The overall five year survival is 60% and up to 50% of all patients will develop metastases^{3,4}. Metastases in distant organs are responsible for the majority of CRC deaths. The common localizations of distant metastases are liver, lung and the intra-abdominal space. Of all patients who die of advanced colorectal cancer, ~85% have colorectal liver metastases (CLM). The etiology of CRC and the sequential adenoma-carcinoma-metastasis process is relatively well understood, the specificity and characteristics for site of metastasis however, is much less comprehended and subject of this thesis.

The intestinal tract

The intestinal tract can be divided into the small bowel, the colon and rectum. Both the small bowel and the colon are covered with a layer of serosa, a layer of smooth muscle, a layer of connective tissue (stroma) and an inner absorptive and secretory epithelial ring (the mucosa). Most of the rectum lacks of serosa.

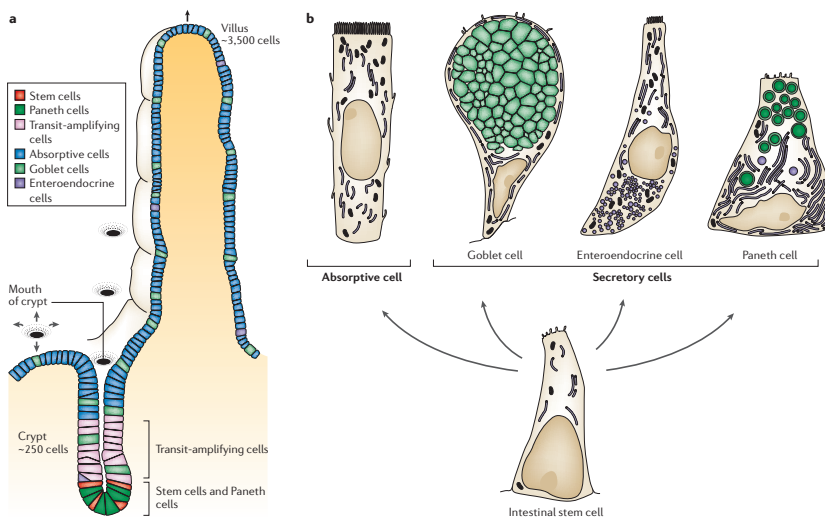
The majority of cancers in the gastro-intestinal tract originate from the epithelial layer, a single layer of differentiated cells. These differentiated cells originate from the crypts of Lieberkühn, located at the connective tissue of the intestinal tract. Each crypt contains several pluripotent stem cells that are able to differentiate into four specific cell types⁵⁻⁷; the absorptive cells or enterocytes (90%), mucus producing goblet cells, enteroendocrine secretory cells (secreting hormones) and Paneth cells (secreting antimicrobial peptides and enzymes) (Figure 1). In the small intestine these differentiated cells migrate to the surface and form villi; finger-shaped luminal protrusions (Figure 1). The function of these villi is to increase the exchange interface of the small intestine.

In contrast to the small intestine, colon epithelium has no villi, but consists of large crypts with several thousand differentiated cells produced out of 1-10 stem cells. Stem cells give rise to the transit-amplifying (TA) cells; an intermediate cell population with the aim to transform into a differentiated cell population

(Figure 1)^{6,8,9}. The stem cells are slowly dividing from the base of the crypt in contrast to the differentiated cells which divide rapidly and travel to the surface within 5 days to undergo apoptosis⁶.

This process of cell proliferation, differentiation and migration is carefully controlled by the epithelial–mesenchymal transition (EMT) process. Mutations in pathways organizing the EMT (consequently; cell proliferation, differentiation and migration) give rise to the development of CRC⁹.

Figure 1, Cell types of the Intestinal Tract Epithelial layer lining the lumen¹⁰

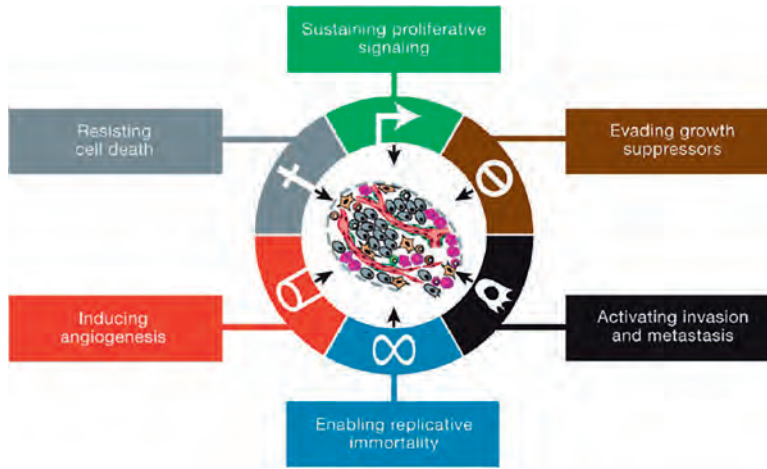


Carcinogenesis

Hallmarks of Cancer

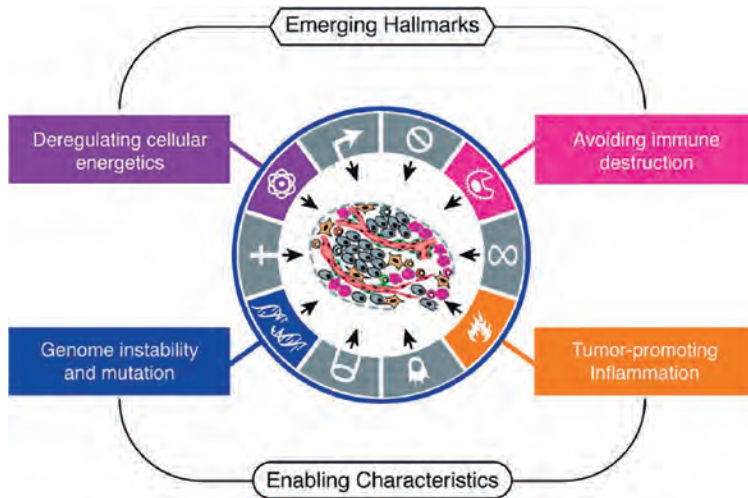
The last decade's research has generated a wealth of knowledge of mechanisms involved in the occurrence of human cancer. Hanahan and Weinberg proposed that cancer may have the following six common traits: self-sufficiency in cell growth signalling; insensitivity to growth-inhibitory (antigrowth) signals; invasion and metastasis; unlimited replicative potential; sustained angiogenesis; evasion of apoptosis (Figure 2). They suggest that these six capabilities are shared in common by most types of human cancers.¹¹

Figure 2, The Hallmarks of Cancer¹²



In 2011, Hanahan and Weinberg added two additional hallmarks of their model; the enabling and the emerging hallmarks. The enabling hallmark defined as genomic instability in cancer cells, which generates mutations in chromosomes and the inflammatory state of cells, driven by the immune system; and the emerging hallmark, reprogramming of the cellular energy metabolism in order to support continuous cell growth, and secondly the evasion of cancer cells from attack and elimination by immune cells (Figure 3)¹².

Figure 3, Emerging Hallmarks and Enabling Characteristics¹²

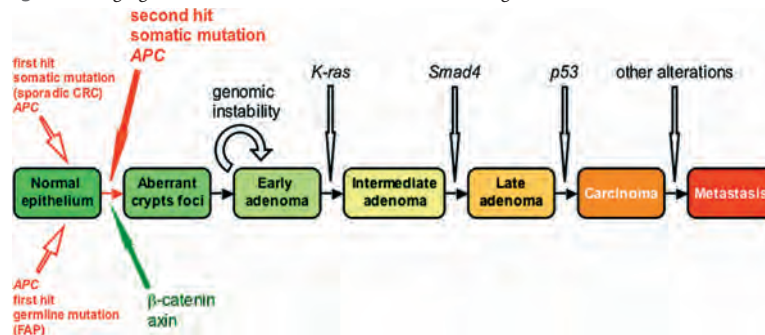


Colorectal Carcinogenesis

The hallmarks described by Hanahan and Weinberg also apply to the development of cancer in the intestinal tract. The occurrence of CRC is either ‘sporadic’ (85%), as a part of a hereditary cancer syndrome (<10%), or against the background of inflammatory bowel disease (2%)¹.

It is believed that CRC arises and progresses through the adenoma–carcinoma sequence. The transition from adenoma to carcinoma may take up to several decades and follows a well-defined path of phenotypically distinguishable stages, each characterized by distinct mutations in oncogenes and tumour suppressor genes, largely following the hallmarks of cancer paradigm. This multistep tumorigenesis is determined by gatekeeper and caretaker pathways described by Vogelstein et al. depicted and summarized into the so-called “Vogelgram” (Figure 4)¹³.

Figure 4, Vogelgram: Genetic model of colorectal carcinogenesis¹⁴



The process of cell proliferation, differentiation and migration; the epithelial–mesenchymal transition (EMT) process, is managed by signals from multiple pathways like the hedgehog, platelet-derived growth factor (PDGF), bone morphogenetic protein (BMP) and the Wnt, Notch and Eph/ephrin pathways¹⁰. An accumulation of mutations in genes affected in these pathways is known as genetic instability and can induce tumourigenesis. Genetic instability in CRC can be explained by three destabilizing pathways: The chromosomal instability (CIN) pathway, the micro satellite instability (MSI) pathway and the CpG island methylator phenotype (CIMP) pathway^{15,16}.

The most common CIN pathway in CRC is characterized by allelic losses, chromosomal amplifications and translocations (70% of CRC)^{17,18}. Gains and losses of whole or large portions of chromosomes leading to aneuploidy and mutations occurring in specific tumour suppressor genes and oncogenes will activate oncogenetic pathways essential for CRC development.

Second most frequently affected pathway in CRC (15%) is the MSI pathway¹⁹. Microsatellites are repetitive sequences distributed throughout the whole genome. These sequences are prone for mutations, mainly because DNA polymerases cannot bind DNA efficiently during DNA synthesis. Tumours affected with MSI are characterized by DNA sequence changes, with small frame shift mutations throughout the whole genome. These changes in the DNA, including the repetitive microsatellite sequences are a result of inadequate repair caused by a mutation in one of the DNA mismatch repair genes (*MLH1*, *MSH2*, *MSH3*, *MSH6*, *PSM2* and *MGMT*), responsible for the surveillance and correction of errors induced after DNA replication. Mismatch repair genes are part of a DNA integrity checkpoint; every newly synthesized DNA strand is checked for defects and if necessary mismatch strands will be repaired by these genes. Insertions or deletions in the non-coding microsatellites indicate that coding regions are affected as well and thus form a marker of microsatellite instability. The third pathway is the CIMP pathway. In this pathway several changes in genes occur, without changes in the DNA sequence, by methylation of CpG islands. The CpG island is often located at the promoter and transcription start site of the gene. Methylation is a physiologic tool to regulate cell function by activating or de-activation specific genes. Depending on the function of the gene, hypo- or hyper methylation can result in dysfunction of the cell mechanism and cause tumour induction.

Because the definitions of the CIN, MSI and CIMP pathways are not mutually exclusive, a tumour can occasionally exhibit features of multiple pathways. For example methylation of the *MLH1* gene (CIMP pathway) results in silencing this mismatch repair gene and cause microsatellite instability.

Jass took the molecular information as described by Vogelstein et al together with clinicopathological characteristics and described the development of CRC as a multi-pathway disease, comprising dissimilar subgroups with particular clinical, pathological and molecular features¹⁵.

Jass classified CRC into five (molecular) subtypes (Table 1);

1. CIMP-high, methylation of *MLH1*, *BRAF* mutation, chromosomally stable, MSI-H, origin in serrated polyps, known generally as sporadic MSI-H (12%).
2. CIMP-high, partial methylation of *MLH1*, *BRAF* mutation, chromosomally stable, MSS or MSI-L, origin in serrated polyps (8%).
3. CIMP-low, *KRAS* mutation, *MGMT* methylation, chromosomal instability, MSS or MSI-L, origin in adenomas or serrated polyps (20%).
4. CIMP-negative, chromosomal instability, mainly MSS, origin in adenomas (may be sporadic, FAP associated or *MUTYH* (formerly *MYH*) polyposis associated (57%).
5. Lynch syndrome, CIMP-negative, *BRAF* mutation negative, chromosomally stable, MSI-H, origin in adenomas (3%)

Table 1 Molecular, Clinical and Morphological features of five colorectal cancer groups²⁰

Feature	Group 1	Group 2	Group 3	Group 4	Group 5
MSI status	H	S/L	S/L	S	H
Methylation	+++	+++	++	+/-	+/-
Ploidy	Dip > An	Dip > An	An > Dip	An > Dip	Dip > An
APC	+/-	+/-	+	+++	++
KRAS	-	+	+++	++	++
BRAF	+++	++	-	-	-
TP53	-	+	++	+++	+
Location	R > L	R > L	L > R	L > R	R > L
Gender	F > M	F > M	M > F	M > F	M > F
Precursor	SP	SP	SP/AD	AD	AD
Serration	+++	+++	+	+/-	+/-
Mucinous	+++	+++	+	+	++
Dirty necrosis	+	+	?	+++	+
Poor differentiation	+++	+++	+	+	++
Circumscribed	+++	+	?	++	++
Tumour budding	+/-	+	?	+++	+
Lymphocytes	+++	+	?	+	+++

MSI, microsatellite instability; H, high; S, stable; L, low; Dip, diploid; An, aneuploid; Serration, serrated morphology; SP, serrated polyp; AD, adenoma; Circumscribed, circumscribed invasive margin.

Migration and invasion of colorectal cancer cells

The transformation of stem cells into differentiated cells is characterized by cell proliferation, differentiation and migration and vulnerable to errors, especially with a dysfunctional EMT. Important pathways involved in the transformation are the;

- Wnt- β -catenin signalling pathway,
- transforming growth factor (TGF)- β /bone morphogenetic protein (BMP)/Smad4 pathway,
- PI(3)K signalling pathway and the EGFR-mitogen-activated protein kinase (MAPK).

These pathways are well studied in the pathogenesis of CRC and of interest for clinical implementations in the management of CRC.

- *The Wnt- β -catenin signalling pathway*

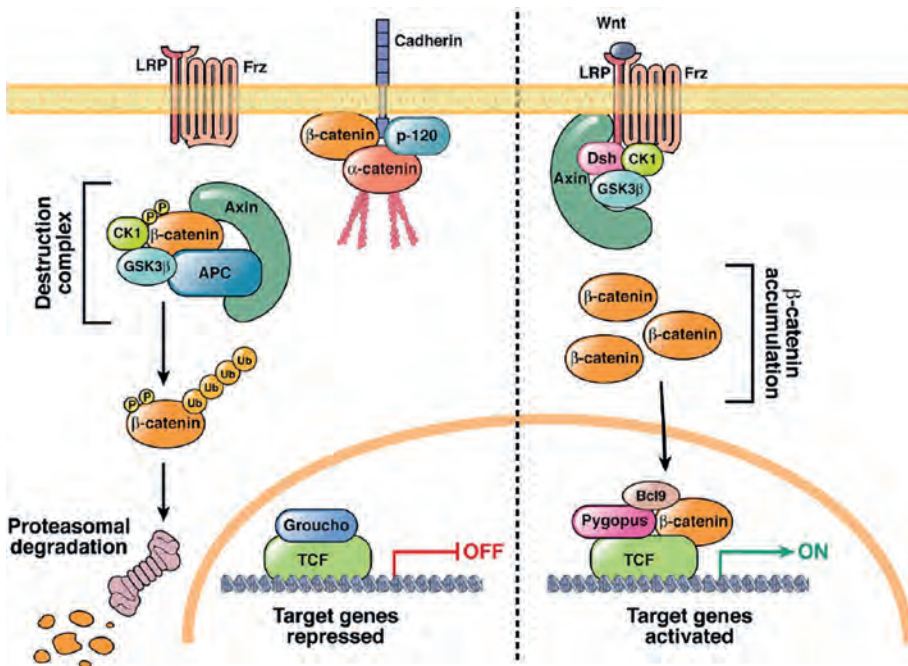
The majority of CRC shows activation of the Wnt- β -catenin signalling pathway, mostly due to mutations in the *APC* gene. Mutation of the *APC* gene (>70% of sporadic CRC), the gate keeper of the adenoma-carcinoma sequence, results in activation of the Wntless/Wnt signalling pathway and induction of chromosomal instability²¹. An essential role of *APC* is the binding with β -catenin. Without a proper function of *APC*, β -catenin will accumulate in the cell and activate transcription factors (TCF/LEF family) in the nucleolus (Figure 5). Deregulation of the transcriptional factors will affect the balance of proliferation and differentiation of the intestinal stem cells in the crypt-villus axis, leading to an unrestricted cell growth. This disruption not only occurs through mutations in the *APC* gene but also as result from mutations in β -catenin^{22,23}. Despite the fundamental role of the Wnt- β -catenin signalling pathway in CRC development, so far, there is no clinical use for *APC* or β -catenin mutations in diagnostic, prognostic or predictive markers²⁴.

- *The transforming growth factor (TGF)- β /bone morphogenetic protein (BMP)/ Smad4 pathway*

The transforming growth factor (TGF)- β /bone morphogenetic protein (BMP)/ Smad4 pathway is a tumour-suppressor pathway that is frequently mutated in CRC and plays a role in the differentiation and migration of stem cells in the intestinal tract. In CRC, TGF- β receptor type II (T β RII) is mutated in >55% of cases, *BMPRI/RII* is mutated in >70% of cases and *Smad4* mutations occur in 20%

to 30% of cases²⁶⁻³⁰. Smad4 protein plays an essential role in the mediation of the TGF-beta intracellular signalling pathway which suppresses tumour growth and dedifferentiation³¹. *Smad4* is located on chromosome 18q, in the region frequently deleted in CRC. There is evidence that LOH of 18q (loss of *Smad4*; 18q21) is related with poor outcome in advanced CRC, development of lymph-node and CLM^{28,32-34}. Furthermore, reduced levels of SMAD4 protein expression are associated with poor prognosis with fluoroucil-based (5-FU) chemotherapy^{34,35}.

Figure 5, The Wnt- β -catenin signalling pathway in inactive (left) and active (right) constellation 25



- The PI(3)K signalling pathway and the EGFR-mitogen-activated protein kinase (MAPK)

In over 50% of CRCs the PI(3)K signalling pathway is affected. This pathway plays a central role in tumorigenesis by regulating cell growth, differentiation and apoptosis³⁶⁻³⁸. In this pathway, *PIK3CA*, *KRAS* and *BRAF* genes are frequently activated by mutations^{36,39-41} with frequencies of 10-30%^{36,40,42-46}, 30-40%^{13,39,47} and 5-22%^{39,48}, respectively. Mutations in any one of these three genes will activate the PI(3)K signalling pathway and increases the transcription of different oncogenes, such as *C-MYC*, *CREB*, *NF-kB* and others⁴², resulting in unrestricted cell growth.

There is a potential role of this signalling pathway in predicting survival^{40,42} and several molecular studies have revealed that KRAS mutation status predicts sensitivity to EGFR-targeted drugs⁴⁹.

The EGFR is a transmembrane glycoprotein that signals through the PI(3)K pathway, but also interacts with the Wnt signalling pathway. EGFR expression is found in 8% to 97% primary CRC⁵⁰⁻⁵². Unfortunately, there are discordant reports in the relation of EGFR expression in primary CRC and poor survival⁵³. Some evidence shows that high EGFR expressions in metastatic lymph nodes is more accurate in predicting survival than in primary or metastatic tissues⁵⁴. EGFR and the PI(3)K signalling pathway provide opportunities for targeted drug treatment as is discussed below.

Clinical Management of Colorectal Cancer

Clinical and pathological staging and characteristics of CRC

So far, the pathological assessment of CRC is of foremost importance for the determination of 1) local extent of disease, 2) whether tumour free resection margins were achieved by the surgical procedure (not only for clinical management but also as a quality indicator for surgery), 3) for the choice of adjuvant treatment and 4) defining prognosis in the individual patient. The most widely used staging system is the pathological T (Tumour), N (Node), and M (Metastasis) (pTNM) staging system, published by the International Union Against Cancer⁵⁵. This system includes the stratification of bowel wall involvement and peritoneal serosa of the colorectal tumour, taking into account the number of involved regional lymph nodes and the presence of distant metastasis (Table 2a)⁵⁵. Table 2b shows the 5-year survival rates of CRC based on the pTNM and various stages⁵⁶. Because of the difficulties in reproducibility of the modifications in the TNM sixth (2003) and seventh (2010) edition, the Netherlands has chosen to use the fifth TNM edition (1997) for staging CRC⁵⁶⁻⁵⁸.

Table 2a Pathological TNM Classification⁵⁵.

pTNM CLASSIFICATION OF COLORECTAL TUMOURS	
pT Primary tumour	
pTX	Primary tumour cannot be assessed
. pT0	No evidence of primary tumour
. pT1	Tumour invades submucosa
. pT2	Tumour invades muscularis propria
. pT3	Tumour invades through muscularis propria into subserosa or non-peritonealised pericolic or perirectal tissues
. pT4	Tumour directly invades other organs (pT4a) and/or involves the visceral peritoneum (pT4b)
pN Regional lymph nodes	
pNX	Regional lymph nodes cannot be assessed
. pN0	No regional lymph node metastasis
. pN1	Metastasis in 1 to 3 regional lymph nodes
. pN2	Metastasis in 4 or more regional lymph nodes
pM Distant metastasis	
pMX	Distant metastasis cannot be assessed
. pM0	No distant metastasis
. pM1	Distant metastasis

Table 2b, 5-year survival CRC in relation to pTNM, stage and Dukes' Classification⁵⁶.

Stage	T	N	M	5-Year survival	Dukes' Classification
AJCC fifth edition					
I	T1 or T2	No	M0	93,20%	A
II	T3 or T4	No	M0	82,50%	B
III	Any T	N1	M0	59,50%	C
IV	Any T	Any N	M1	8,10%	D

The depth of the tumour invasion is described by the T stage; starting as a T1 tumour (invasion in the mucosa) to T4 tumours (invasion of the serosa or adjacent structures). The N status defines the tumour metastasis in regional lymph nodes; No (no lymph nodes with tumour), N1 (1-3 Lymph nodes are involved with metastasis), N2 (4 or more Lymph nodes involved). Lymph node metastasis is considered as one of the most important prognostic factors⁵⁹. Patients with an early stage CRC, without presence of lymph node metastasis (Dukes A and B, TNM stage I and II) have a 5-year survival rate of 80%-90%, while patients with advanced CRC with regional lymph node disease (Dukes C, TNM stage III) have a 5-year survival rate of 60%. Furthermore, patients with distant metastatic disease (Dukes D, TNM stage IV) have a 5-year survival rate of less than 8%^{56,56,60,61}.

The total number of lymph nodes to be identified for accurate staging is an area of debate. Guidelines in the US recommend the identification of at least 12 lymph nodes whereas in the Netherlands 10 lymph nodes are recommended. Several studies showed significant survival advantage when more lymph nodes are evaluated⁶²⁻⁶⁸. The examination of fewer lymph nodes may be related to incomplete oncologic surgical resection (increasing the risk of local recurrence), inadequate inspection of the pathologist, obesity, neoadjuvant (chemo therapy; radiation therapy or combination of both) therapy, hospital volume, MSI, location of the tumour and variation in patient anatomy⁶⁹⁻⁷³. In a large study of lymph node examinations, tumours with prominent lymphocytic infiltration were easier to find due to reactive enlargement. Patients with these characteristics showed an survival advantage due to the number of identified lymph nodes and possibly as a reflection of the immune response to the tumour⁶⁸. The improved survival, associated with infiltration of lymphocytes, might reflect the presence of a good systemic immunosurveillance mechanism resulting in tumour suppression^{74,75}. Furthermore, the lymph node ratio, defined as the ratio of the number of positive nodes over the total number of examined nodes, has recently shown to be of independent prognostic value in stage III patients^{76,77}.

Contrary to patients with colon cancer, patients with rectal cancer are frequently treated neoadjuvantly with (chemo)radiation therapy. Although, in these patients the number of retrieved lymph nodes is lower due to the (chemo) radiation therapy there is still prognostic value^{76,78-83}.

Besides the Dukes and TNM staging systems, several other pathologic and clinical features have been identified that are associated with increased risk for systemic recurrence and thus worse survival. The most important factors are emergency presentation, bowel perforation, poorly differentiated tumour, depth of tumour invasion, adjacent organ involvement (T4), lymphovascular invasion, perineural invasion and an elevated carcinoembryonic antigen (CEA)⁸⁴⁻⁸⁶. The presence of one these factors will result in worse outcome. CRC population detection programmes reduce the prevalence of some of these clinical features. While, these screening programs will focus on the general population (age > 50 years) there is also a need for focussed surveillance of high risk patients with hereditary syndromes.

Hereditary syndromes

Approximately 30% of all CRC are an inherited form of the disease and 3-5% of CRC occurs in the context of well-defined, hereditary colon cancer syndromes¹⁸. Lynch syndrome (previously called hereditary nonpolyposis colorectal cancer: (HNPCC) and familial adenomatous polyposis (FAP) represent the most common hereditary syndromes associated with CRC, followed by other less common diseases including attenuated FAP, and MUTYH-associated polyposis (MAP), juvenile polyposis (JPS) and Peutz-Jeghers syndrome (PJS) and hyperplastic polyposis (HPP). Except for MAP and HPP, all these syndromes are autosomal dominant disorders with their own risk in developing cancer and clinical manifestation.

Lynch syndrome is the result of germline mutations in the genes involved in the mismatch repair system (*MLH1*, *MSH2*, *MSH6*, *PSM2*). Patients with Lynch syndrome have a life-time risk of 50-80% for developing CRC⁸⁷. To determine if a patient is prone to be carrier of the Lynch syndrome, evaluation with the Bethesda Guidelines needs to be performed⁸⁸. Patients with the Lynch syndrome require an intensified surveillance not only for CRC but also for extra colonic manifestations of Lynch associated tumours⁸⁹.

Familial adenomatous polyposis (FAP) is the second-most common inherited form of CRC and the result of germline mutations in the *APC* gene. Mutation of the *APC* gene, the gate keeper of the adenoma-carcinoma sequence, results in activation of the Wntless/Wnt signalling pathway and induction of chromosomal instability²¹. This entity is characterized by forming hundreds to thousands of colonic adenomas with an increased risk of developing extra colonic cancer (e.g., duodenal, pancreatic, thyroid cancer and desmoids tumours). The occurrence of colonic adenomas will start in early adolescence and finally, if untreated, result in the development of CRC. The average age of developing CRC is at age 35 and 95% of the patients with FAP have CRC at age 50. Therefore preventive proctocolectomy is advocated. Timing for surgery should be late teens or early twenties⁹⁰.

Surgical and (neo)-adjuvant treatment

The cornerstone for CRC treatment is surgery. For tumours located in the colon and the rectum, the goal is to perform a radical resection. The surgical approach can be laparoscopic or via an open procedure. In the beginning there was concern about the oncological radicality of laparoscopic surgery for CRC.

The main concerns were about irradical resections and port site metastases. For that reason, many surgeons preferred the conventional open approach. However, several randomized trials showed that laparoscopic surgery is safe in CRC treatment with the benefit of reduced pain, shorter duration of ileus, faster recovery, better pulmonary function, less fatigue, lower peri-operative mortality and a better quality of life⁹¹⁻⁹⁶. However, laparoscopic colon resection remains a challenging technique with a longer operation time and conversion rates that international vary between 2%-40%^{95,97,98}. Data from the Dutch Surgical Colorectal Audit reported that in the Netherlands 42% of the patients with colon cancer and 45% of the patients with rectal cancer were treated with a laparoscopic procedure wherein 15% was converted to an open procedure⁹⁹. Conversion is associated with poorer results in terms of worse peri-operative outcome and worse disease-free survival^{100,101}. The cause for conversion may be due to the type of procedure performed, high BMI (BMI greater than 28.5 kg/m² is associated with a 2.2-fold increase of conversion), intra abdominal abscesses or fistulas and surgeon seniority¹⁰².

In rectal cancer the resection has to include the total excision of the mesorectum (TME). In this procedure the rectum is resected together with the mesorectum and mesorectal fascia. This TME procedure resulted in a decrease of 50% local recurrence rate compared with conventional surgery (respectively, 11% and 27% at 5 years)^{103,104}. The most important prognostic factors that influence local recurrence rates after resection of rectal cancer is defined by the circumferential resection margin (CRM), radical surgery (Ro), the stage of the tumour and number of involved lymph nodes¹⁰⁵⁻¹⁰⁸. Therefore, preoperative assessment of the chance for radical resection and clear CRM is of pivotal importance. This can be done by endorectal ultrasound (EUS), CT-scan or MRI^{109,110}. For the T-stage of the tumour, EUS is accurate in differentiating T1 from T2 tumours but performs less in staging T3 and T4 tumours. The disadvantage of EUS is that EUS is operator dependent and cannot appreciate the mesorectal fascia (MRF) involvement. The performance of MRI and CT is less subject to the skills of the operator. The MRI is in many respects superior to the CT scan, especially for determining the MRF involvement. The only advantage of CT would be that it allows local and distant staging in a single examination but, especially for the low rectal tumours, the accuracy is moderate. Identifying nodal disease remains difficult in the pre-operative assessment. Lymph nodes with a diameter of 10 mm or more are almost always malignant but many lymph nodes affected

with metastases are smaller than 5 mm. High-resolution MR images are able to identify nodes <5 mm but differentiation between malignant or benign nodes is difficult. Ultrasmall superparamagnetic particles of iron oxide (USPIO) showing high sensitivity and specificity in defining nodal involvement but are so far not FDA- or EMEA-approved^{111,112}.

Depending on the local extent of the tumour in relation to the mesorectal fascia and the number of suspected lymph nodes patients will be offered neoadjuvant radiotherapy (RT) nowadays increasingly in combination with chemotherapy. The Dutch TME trial showed that preoperative radiotherapy resulted in significantly lower local recurrence rates compared with the TME alone group (5% and 11%, respectively). The same trial did not show differences in overall survival^{113,114}.

Combining RT with chemotherapy (CRT) will result in a increased radiosensitivity and as a result enhances the antitumour activity of RT. Unfortunately, (C)RT does not benefit DFS or OS at five years and has to be balanced against the morbidity of the treatment (higher risk of faecal incontinence, sexual dysfunction, bowel dysfunction, wound healing disorders)¹¹⁵⁻¹¹⁹. Therefore, pre-operative assessment of the tumour needs to be done to define which patients will benefit most from neo-adjuvant treatment. For *high risk rectal cancer* (T1-3 with a MRF <1mm, or T4, and/or the risk of 4 or more positive lymph nodes within the mesorectum or positive lymph nodes outside the mesorectum) this will result in a treatment with CRT. For *low risk rectal cancer* (T1-3N0, extramural invasion ≤5 mm, distant MRF ≥1mm) in a TME resection alone without neo-adjuvant treatment and for the *intermediate risk rectal cancer* (cT1-3N1 or cT3N0 with extramural invasion >5 mm, distant MRF ≥1mm) short-course radiotherapy (5X5 Gy)¹²⁰. After neo-adjuvant treatment an open or laparoscopic rectum (extralevator) TME resection will follow¹²¹. Although the great advantage of this TME procedure, rectum surgery is associated with high morbidity rates (~30%). Leakage of the anastomosis is a real problem in rectal surgery, especially for tumours close to the anus, and is reported in 1-19%¹²²⁻¹²⁶. Therefore, there is a need for new treatment modalities that could reduce morbidity in rectal cancer treatment.

After critical patient selection and with the assumption that an adequate resection margin can be achieved, patients with low risk rectal cancer; a tumour confined to the mucosa of the rectum (T1), could be prevented from major surgery with a Transanal Endoscopic Micro resection (TEM) or Single-incision laparoscopic surgery TEM procedure (SILSTEM)¹²⁷⁻¹³⁰. An ongoing study in the

Netherlands (CARTS-study) investigates the role of rectum saving surgery for distal rectal cancer with higher T-stage. This CARTS-study is a prospective multicenter clinical trial, investigating patients with a clinical T1-3 No Mo rectal adenocarcinoma below 10 cm from the anal verge. These patients will receive neoadjuvant CRT therapy (25 fractions of 2 Gy with concurrent capecitabine) followed by TEM procedure 8 - 10 weeks after the end of the preoperative treatment. Patients with lymphangi invasion, an incomplete resected ypT1 (<2 mm margin), an inconclusive resection margin, an ypT2 or ypT3 tumour after TEM will subsequently undergo TME surgery to remove the rectum within 4 weeks¹³¹. The objectives of the study are to determine the number of patients with a (near) complete pathological response after chemoradiation therapy and TEM, the local recurrence rate and quality of life¹³².

In contrast with cancer located in the colon, there is debate whether patients with rectal cancer benefit from adjuvant chemotherapy¹³³.

Depending on the stage in which cancer located in the colon is discovered, adjuvant treatment with 5-fluorouracil, leucovorin, and oxaliplatin or irinotecan are known to be beneficial in patients with stage III disease. The risk of death for stage III tumours will be reduced by 33%, resulting in a 10–13% absolute improvement in survival¹³⁴⁻¹³⁶. Although chemotherapy after surgery is standard for patients with stage III colon cancer, the role of adjuvant therapy for stage II colon cancer remains controversial. There is debate whether stage II patients benefit enough of adjuvant chemotherapy¹³⁷⁻¹³⁹. Currently, the American Society of Clinical Oncology recommend only high risk stage II patients, defined as patients with one or more of the following characteristics; an emergency presentation, poorly differentiated tumour, depth of tumour invasion, adjacent organ involvement (T4), fewer than 10-12 lymph nodes sampling^{85,86,140}, to offer adjuvant chemotherapy.

Targeted therapies have more recently become recommended as first line or subsequent treatment for metastatic CRC. Bevacizumab is a monoclonal antibody therapy that targets the vascular endothelial growth factor (VEGF) thereby blocking blood vessel formation. Cetuximab and Panitumumab, are both monoclonal antibodies targeting the Epidermal Growth Factor Receptor (EGFR). The combination of these targeted drugs with the regular chemotherapeutic drugs results in a considerable improvement of survival in patients with colorectal cancer metastases, with a median survival up to 20.3 months¹⁴¹⁻¹⁴⁵. In 4

out of 10 CRC patients, however, EGFR targeted drugs are not effective due to a down stream mutation in the *KRAS* gene⁴⁹. Based on these findings, the European Medicines Agency (EMA) and the U.S. Food and Drug Administration (FDA) have placed restrictions on the usage of EGFR-targeted drugs and only approved for CRC metastatic patients with wild-type *KRAS* tumours.

Distant metastases

In addition to lymph node metastases, lymphoangioinvasion, perineural invasion and pericolic tumour deposits, CRC can develop distant metastases by haematogenous spread of tumour cells into the bloodstream.

Despite the (neo-)adjuvant treatment of CRC, 50% of all patients will develop distant metastases³. These distant metastases can occur synchronic or metachronic. Synchronous metastases are defined as metastases that occur simultaneous with the primary tumour whereas metachronous metastases occur after the diagnosis of the primary tumour. Untreated, these patients have a median survival of approximately 10 months and a 5-year survival rate of less than 5%^{146,147}. Distant metastases are responsible for the great majority of CRC deaths, mainly due to liver, lung and peritoneal metastases¹⁴⁸.

About 50% of patients with stage III and 20% of patients with stage II disease will develop colorectal liver metastasis (CLM). Of all patients who die of advanced CRC, 60-70% have developed CLM. Even with the use of targeted drugs, the overall survival in patients with non-resectable CLM is only 2-years and late detection of CLM could be fatal. In 15-25% of patients with CLM, partial hepatic resection is a potentially curative treatment option¹⁴⁹. In these patients a 5-year survival of up to 60% can be achieved and up to 20% of this population will still be alive after 10 years¹⁵⁰⁻¹⁵⁵. However, this survival benefit has to be balanced against the procedure related morbidity rates of 15% to 35% and mortality rates of 1% to 4%, respectively¹⁵⁶.

Eligibility for hepatic surgery depends on the likelihood that all metastases are resectable while an adequate liver reserve can be maintained¹⁵⁷. Furthermore, there should be no extrahepatic disease, with the possible exception of few resectable lung metastases¹⁵³. These patients may benefit from pulmonary metastasectomy with a 5-year survival rate of 27-50%¹⁵⁸⁻¹⁶¹. Unfortunately, only

15-30% will be eligible for liver resection and even in this group, two-thirds of patients will develop a recurrence despite optimal metastasectomy^{153,155,162,163}. In patients with resectable CLM, perioperative combination chemotherapy with 5-fluorouracil/leucovorin/oxaliplatin (FOLFOX regimen) improves the 3-year progression-free survival from 28.1% to 36.2% compared to surgery alone and seems to benefit most when CEA levels are elevated and in patients with unaffected performance status¹⁶⁴.

So far, surgical resection of CLM remains the only chance for cure. However, a large proportion of patients with CLM are unable to undergo a complete surgical resection. These patients are offered to be treated with liver-directed therapies like radio frequent ablation (RFA), cryoablation, hepatic artery infusion and stereotactic radiotherapy. All these therapies have aided in prolonging survival in patients with CLM. A recent study comparing non-resectable colorectal liver metastases between systemic treatment or systemic treatment plus RFA (\pm resection), showed no significantly difference in 30-month overall survival (57.6% and 61.7% respectively). However, the median progression-free survival was significantly improved with 7 months in the RFA plus systemic treatment group¹⁶⁵.

Following CLM, a second preferential site of distant metastases are pulmonary located. Most of these pulmonary metastases are in combination with CLM. Only 10% of pulmonary metastases are isolated lung metastases. Isolated lung metastases are metastases confined to the lung without other distant metastases. The incidence of isolated pulmonary metastases is higher in rectal cancer compared with colon cancer, with an incidence up to 12% and 6% respectively. The explanation for this finding is that a rectal tumour spread directly into the systemic circulation via the inferior and middle rectal veins, bypassing the portal venous system¹⁶⁶. The 5-year survival rate after resection pulmonary metastases range from 40-63¹⁶¹%.

A third preferential site of metastases is the peritoneal cavity. Peritoneal Metastases (PM) is uniformly seen as a fatal condition. However, in the last decade survival has improved due to aggressive cytoreductive surgery in combination with hyperthermic intraperitoneal chemotherapy (HIPEC). Patients with PM from colorectal origin who underwent complete cytoreduction in combination

with HIPEC showed 5-year survival rates of 22–49%^{167,168}. Peritoneal metastases of appendix tumours showed an even better outcome, up to 85% 10-year survival^{169,170}.

Several predictors for outcome after HIPEC treatment, such as the completeness of cytoreduction, the number of affected intra-abdominal tumour regions and the histological characteristics of the PM, have been described¹⁷¹⁻¹⁷⁴. In many studies peritoneal dissemination from appendiceal neoplasm's is reported as a specific entity. However, this condition ranges from borderline malignancy to true colon like carcinoma and may thus be closely related PM from colorectal origin. Other studies focused only on PM originating from colon and rectal cancers including both mucinous and non-mucinous PM and thereby excluding tumours with a primary appendix lesion^{168,172,174-176}. Conversely, studies focused on the clinical diagnosis such as the clinical entity 'pseudomyxoma peritonei', a disease with an ongoing discussion on the definitions of origin, histopathology and proper treatment. Therefore, an internationally accepted histopathological classification is needed to compare outcome of specialized treatment regimes like the HIPEC procedure.

Follow-up

Eligibility for surgery for metastases of liver, lung or PM is depending on the extensiveness at the time they are discovered. Approximately 30-50% of all patients with CRC develop metachronous metastases. These metastases mostly occur within 3 years after surgery¹⁷⁷. A 2007 Cochrane report presents strong evidence that intensive surveillance is life-saving and appropriate for CRC patients²⁰. It is supposed that the survival gain (7-13%) for patients managed with intensive follow-up after primary tumour treatment, is a result of earlier detection in which further curative treatment is possible^{20,178,179}. Between 35% to 47% of patients who experience recurrences after primary CRC resection can be treated with secondary curative-intent surgery when followed intensively after primary surgery. Thirty-six percent of all patients with a recurrence undergo secondary surgery with a curative intent. These patients have a median survival between 36 and 51 months^{180,181}. Intensive follow-up programs include: frequent medical check-ups, CEA determinations, imaging the thorax and abdomen and colonoscopy.

Increase in CEA levels is often the first signal of recurrence. Subsequent elevation of CEA in a post operative patient is indicative for tumour recurrence

or distant metastases, mainly due to CLM¹⁶⁶. Approximately 75% of the patients with local recurrence or distant metastases have elevated CEA levels¹⁸². Therefore, several guidelines (American Society of Colon and Rectal Surgeons (ASCRS), ASCO, National Comprehensive Cancer Network (NCCN), European Society for Medical Oncology (ESMO)) recommend CEA determination every 3–6 months for 3 years and every 6–12 months at years 4 and 5 after surgery^{179,183}. Furthermore, CT scan of chest and abdomen every 6–12 months for the first 3 years can be considered in patients who are at higher risk for recurrence. As far as liver imaging is concerned, CT scan has been shown to be more sensitive than ultrasonography (0.67 compared with 0.43), but contrast enhancement ultrasound scan can significantly increase the sensitivity of ultrasonography¹⁷⁹. Complete visualization with (CT)-colonoscopy of the colon to identify synchronous lesions is recommended before curative resection. If not possible (e.g. acute presentation due to obstruction, perforation) a colonoscopy should be performed within 3–6 months after resection. One year after surgery and thereafter every 3–5 years a colonoscopy must be performed to detect recurrence or pre-malignant lesions.

All these screening and follow up modalities are designed to improve the prognosis by early detection of primary or recurrent CRC. In the Netherlands, a screening program performed with a immunochemical faecal occult blood tests (iFOBT), will be established in 2013 to discover primary CRC in an early stage. iFOBT has demonstrated mortality benefit in several studies although the accuracy is low in detecting adenomas at an early stage¹⁸⁴⁻¹⁸⁹. A recent systemic review and meta-analysis shows that flexible sigmoidoscopy (FS) as screening modality between average risk 55 and 64 years results in a reduction of CRC incidence of approximately 32% and CRC-related mortality by 50%¹⁹⁰. Because the right sided colon is only screened in case of a left sided adenoma, the protective effect of FS is limited for proximal CRC¹⁹⁰.

Molecular Biomarkers for the management of CRC

Prognostic and Predictive Markers

Selecting the optimal treatment strategy for patients with stage II CRC is still a clinical challenge. The majority (80%) of these patients is cured by surgery alone and do not need adjuvant chemotherapy. Patients who are classified as high

risk, based on pathological risk features, are the only group of stage II patients who currently receive adjuvant chemotherapy. This results in under treatment of the patients in the clinical-pathological low risk group and over treatment for the high risk patients, as these predictions are not that precise. Therefore, there is a strong need for new, clinically validated molecular tests which can provide more accurate, quantitative recurrence risk information to guide treatment decision-making for individual stage II colon cancer patients. Several studies have now described prognostic gene expression profiles for CRC patients^{9,191-197}. For example the new prognosis signature ColoPrint, which distinguishes low from high risk patients using gene expression analysis, including the validation of this signature in an independent dataset. This gene expression profile was able to predict prognosis of stage II and III patients better than the conventional recommended clinical-pathological risk factors¹⁹⁸. The use of these gene expression profile in clinical setting will provide more accurate information on the risk of recurrence compared to the use of conventional clinico-pathological criteria alone and can facilitate the selection of low risk patients who can be spared chemotherapy.

KRAS mutation testing is currently performed as part of EGFR targeted therapy, Cetuximab and Panitumumab eligibility for metastatic CRC patients as mutated *KRAS* prevents therapeutic benefit [46].

Prediction colorectal liver metastases

Clinical pathological assessment of CRC is used for determination of local extent of disease, choice for adjuvant treatment and defining prognosis in the individual patient. However, this conventional clinical pathologic classification does not provide information on predicted site of metastases.

Gene expression profiles have been described for breast cancer that predict site specific recurrence e.g., bone and lung metastases¹⁹⁹⁻²⁰¹. However, gene expression or genomic profiles in CRC that predict site specific recurrence have not been well studied.

In this thesis we describe the research that investigated molecular biomarkers in defined groups of primary colorectal tumours to determine markers for site specific metastases.

Selection of patients for specialized surgery

Patients to select for hepatic surgery

One of the challenges in CRC management lies in the early detection and treatment of CLM. Several clinical pathologic and molecular models predict outcome for individual patients with CLM. Unfortunately, these models do not predict extra hepatic recurrence after CLM resection. Knowledge of likelihood for extra-hepatic metastases after CLM surgery may limit hepatic resections to those who are not likely to develop extra-hepatic metastases. Therefore, we investigated whether genomic aberrations in primary CRC could aid to identify these patients who will develop extra hepatic recurrence after CLM resection.

Patients to select for HIPEC surgery

In this thesis we investigated whether a classification system that identifies patients who could benefit from HIPEC surgery is feasible for both colorectal and appendiceal tumours. We investigated whether a standardized histological classification of PM from appendiceal and colorectal origin can more precisely predict survival and thus help to tailor therapy in the future and select patients most suitable for the HIPEC treatment.

Reference List

1. Weitz J, Koch M, Debus J, Hohler T, Galle PR, Buchler MW. Colorectal cancer. *Lancet* 2005; 365:153-65.
2. <http://www-dep.iarc.fr/WHOdb/WHOdb.htm>. 2013. RefType: Report
3. Verdecchia A, Francisci S, Brenner H, Gatta G, Micheli A, Mangone L, Kunkler I. Recent cancer survival in Europe: a 2000-02 period analysis of EURO CARE-4 data. *Lancet Oncol* 2007; 8:784-96.
4. Brenner H, Bouvier AM, Foschi R et al. Progress in colorectal cancer survival in Europe from the late 1980s to the early 21st century: the EURO CARE study. *Int J Cancer* 2012; 131:1649-58.
5. Cheng H, Leblond CP. Origin, differentiation and renewal of the four main epithelial cell types in the mouse small intestine. V. Unitarian Theory of the origin of the four epithelial cell types. *Am J Anat* 1974; 141:537-61.
6. Pinto D, Clevers H. Wnt, stem cells and cancer in the intestine. *Biol Cell* 2005; 97:185-96.
7. Wright NA. Epithelial stem cell repertoire in the gut: clues to the origin of cell lineages, proliferative units and cancer. *Int J Exp Pathol* 2000; 81:117-43.
8. Rajagopalan H, Nowak MA, Vogelstein B, Lengauer C. The significance of unstable chromosomes in colorectal cancer. *Nat Rev Cancer* 2003; 3:695-701.
9. Croner RS, Peters A, Brueckl WM et al. Microarray versus conventional prediction of lymph node metastasis in colorectal carcinoma. *Cancer* 2005; 104:395-404.
10. Crosnier C, Stamataki D, Lewis J. Organizing cell renewal in the intestine: stem cells, signals and combinatorial control. *Nat Rev Genet* 2006; 7:349-59.
11. Hanahan D, Weinberg RA. The hallmarks of cancer. *Cell* 2000; 100:57-70.
12. Hanahan D, Weinberg RA. Hallmarks of cancer: the next generation. *Cell* 2011; 144:646-74.
13. Vogelstein B, Fearon ER, Hamilton SR et al. Genetic alterations during colorectal-tumor development. *N Engl J Med* 1988; 319:525-32.
14. Fearon ER, Vogelstein B. A genetic model for colorectal tumorigenesis. *Cell* 1990; 61:759-67.
15. Jass JR. Classification of colorectal cancer based on correlation of clinical, morphological and molecular features. *Histopathology* 2007; 50:113-30.
16. Rajagopalan H, Nowak MA, Vogelstein B, Lengauer C. The significance of unstable chromosomes in colorectal cancer. *Nat Rev Cancer* 2003; 3:695-701.
17. Lengauer C, Kinzler KW, Vogelstein B. Genetic instabilities in human cancers. *Nature* 1998; 396:643-9.
18. Grady WM, Carethers JM. Genomic and epigenetic instability in colorectal cancer pathogenesis. *Gastroenterology* 2008; 135:1079-99.
19. Sinicropo FA, Sargent DJ. Molecular pathways: microsatellite instability in colorectal cancer: prognostic, predictive, and therapeutic implications. *Clin Cancer Res* 2012; 18:1506-12.
20. Jeffery M, Hickey BE, Hider PN. Follow-up strategies for patients treated for non-metastatic colorectal cancer. *Cochrane Database Syst Rev* 2007; CD002200.
21. Fodde R, Brabletz T. Wnt/beta-catenin signaling in cancer stemness and malignant behavior. *Curr Opin Cell Biol* 2007; 19:150-8.
22. Brabletz T, Jung A, Spaderna S, Hlubek F, Kirchner T. Opinion: migrating cancer stem cells - an integrated concept of malignant tumour progression. *Nat Rev Cancer* 2005; 5:744-9.
23. Sparks AB, Morin PJ, Vogelstein B, Kinzler KW. Mutational analysis of the APC/beta-catenin/Tcf pathway in colorectal cancer. *Cancer Res* 1998; 58:1130-4.
24. Pritchard CC, Grady WM. Colorectal cancer molecular biology moves into clinical practice. *Gut* 2011; 60:116-29.
25. Pino MS, Chung DC. The chromosomal instability pathway in colon cancer. *Gastroenterology* 2010; 138:2059-72.
26. Grady WM, Myeroff LL, Swinler SE et al. Mutational inactivation of transforming growth factor beta receptor type II in microsatellite stable colon cancers. *Cancer Res* 1999; 59:320-4.

27. Kodach LL, Bleuming SA, Musler AR et al. The bone morphogenetic protein pathway is active in human colon adenomas and inactivated in colorectal cancer. *Cancer* 2008; 112:300-6.
28. Tanaka T, Watanabe T, Kazama Y, Tanaka J, Kanazawa T, Kazama S, Nagawa H. Loss of Smad4 protein expression and 18qLOH as molecular markers indicating lymph node metastasis in colorectal cancer--a study matched for tumor depth and pathology. *J Surg Oncol* 2008; 97:69-73.
29. Miyaki M, Iijima T, Konishi M et al. Higher frequency of Smad4 gene mutation in human colorectal cancer with distant metastasis. *Oncogene* 1999; 18:3098-103.
30. Reinacher-Schick A, Baldus SE, Romdhana B et al. Loss of Smad4 correlates with loss of the invasion suppressor E-cadherin in advanced colorectal carcinomas. *J Pathol* 2004; 202:412-20.
31. Li F, Cao Y, Townsend CM, Jr., Ko TC. TGF-beta signaling in colon cancer cells. *World J Surg* 2005; 29:306-11.
32. Watanabe T, Wu TT, Catalano PJ et al. Molecular predictors of survival after adjuvant chemotherapy for colon cancer. *N Engl J Med* 2001; 344:1196-206.
33. Watanabe T, Kanazawa T, Kazama Y, Tanaka J, Tanaka T, Ishihara S, Nagawa H. SMAD4 levels and allelic imbalance in 18q21 in colorectal cancer. *Clin Cancer Res* 2006; 12:1654-5.
34. Alhopuro P, Alazzouzi H, Sammalkorpi H et al. SMAD4 levels and response to 5-fluorouracil in colorectal cancer. *Clin Cancer Res* 2005; 11:6311-6.
35. Boulay JL, Mild G, Lowy A et al. SMAD4 is a predictive marker for 5-fluorouracil-based chemotherapy in patients with colorectal cancer. *Br J Cancer* 2002; 87:630-4.
36. Samuels Y, Wang Z, Bardelli A et al. High frequency of mutations of the PIK3CA gene in human cancers. *Science* 2004; 304:554.
37. Shaw RJ, Cantley LC. Ras, PI(3)K and mTOR signalling controls tumour cell growth. *Nature* 2006; 441:424-30.
38. Vivanco I, Sawyers CL. The phosphatidylinositol 3-Kinase AKT pathway in human cancer. *Nat Rev Cancer* 2002; 2:489-501.
39. Cardoso J, Boer J, Morreau H, Fodde R. Expression and genomic profiling of colorectal cancer. *Biochim Biophys Acta* 2007; 1775:103-37.
40. Kato S, Iida S, Higuchi T et al. PIK3CA mutation is predictive of poor survival in patients with colorectal cancer. *Int J Cancer* 2007; 121:1771-8.
41. Oikonomou E, Pintzas A. Cancer genetics of sporadic colorectal cancer: BRAF and PI3KCA mutations, their impact on signaling and novel targeted therapies. *Anticancer Res* 2006; 26:1077-84.
42. Barault L, Veyrie N, Jooste V et al. Mutations in the RAS-MAPK, PI(3)K (phosphatidylinositol-3-OH kinase) signaling network correlate with poor survival in a population-based series of colon cancers. *Int J Cancer* 2008; 122:2255-9.
43. Collette L, Bosset JF, den Dulk M et al. Patients with curative resection of cT3-4 rectal cancer after preoperative radiotherapy or radiochemotherapy: does anybody benefit from adjuvant fluorouracil-based chemotherapy? A trial of the European Organisation for Research and Treatment of Cancer Radiation Oncology Group. *J Clin Oncol* 2007; 25:4379-86.
44. Nosho K, Kawasaki T, Ohnishi M et al. PIK3CA mutation in colorectal cancer: relationship with genetic and epigenetic alterations. *Neoplasia* 2008; 10:534-41.
45. Ogino S, Nosho K, Kirkner GJ et al. PIK3CA mutation is associated with poor prognosis among patients with curatively resected colon cancer. *J Clin Oncol* 2009; 27:1477-84.
46. Velho S, Oliveira C, Ferreira A et al. The prevalence of PIK3CA mutations in gastric and colon cancer. *Eur J Cancer* 2005; 41:1649-54.
47. Andreyev HJ, Norman AR, Cunningham D, Oates JR, Clarke PA. Kirsten ras mutations in patients with colorectal cancer: the multicenter „RASCAL“ study. *J Natl Cancer Inst* 1998; 90:675-84.
48. Yuen ST, Davies H, Chan TL et al. Similarity of the phenotypic patterns associated with BRAF and KRAS mutations in colorectal neoplasia. *Cancer Res* 2002; 62:6451-5.
49. Normanno N, Tejpar S, Morgillo F, De Luca A, Van Cutsem E, Ciardiello F. Implications for KRAS status and EGFR-targeted therapies in metastatic CRC. *Nat Rev Clin Oncol* 2009; 6:519-27.
50. Cunningham MP, Essapen S, Thomas H et al. Coexpression of the IGF-IR, EGFR and HER-2 is common in colorectal cancer patients. *Int J Oncol* 2006; 28:329-35.

51. Goldstein NS, Armin M. Epidermal growth factor receptor immunohistochemical reactivity in patients with American Joint Committee on Cancer Stage IV colon adenocarcinoma: implications for a standardized scoring system. *Cancer* 2001; 92:1331-46.
52. Mayer A, Takimoto M, Fritz E, Schellander G, Kofler K, Ludwig H. The prognostic significance of proliferating cell nuclear antigen, epidermal growth factor receptor, and *mdr* gene expression in colorectal cancer. *Cancer* 1993; 71:2454-60.
53. Spano JP, Milano G, Vignot S, Khayat D. Potential predictive markers of response to EGFR-targeted therapies in colorectal cancer. *Crit Rev Oncol Hematol* 2008; 66:21-30.
54. Deng Y, Kurland BF, Wang J et al. High epidermal growth factor receptor expression in metastatic colorectal cancer lymph nodes may be more prognostic of poor survival than in primary tumor. *Am J Clin Oncol* 2009; 32:245-52.
55. Sobin LH W. TNM classification of malignant tumors. 5th edition. International Union Against Cancer (UICC), ed. 1997. John Wiley & Sons, Inc., 1997. RefType: Report
56. O'Connell JB, Maggard MA, Ko CY. Colon cancer survival rates with the new American Joint Committee on Cancer sixth edition staging. *J Natl Cancer Inst* 2004; 96:1420-5.
57. Onoline. 2013. RefType: Report
58. Nagtegaal ID, Tot T, Jayne DG et al. Lymph nodes, tumor deposits, and TNM: are we getting better? *J Clin Oncol* 2011; 29:2487-92.
59. Vather R, Sammour T, Kahokehr A, Connolly AB, Hill AG. Lymph node evaluation and long-term survival in Stage II and Stage III colon cancer: a national study. *Ann Surg Oncol* 2009; 16:585-93.
60. Edge SB, Compton CC. The American Joint Committee on Cancer: the 7th edition of the AJCC cancer staging manual and the future of TNM. *Ann Surg Oncol* 2010; 17:1471-4.
61. Meyerhardt JA, Mayer RJ. Systemic therapy for colorectal cancer. *N Engl J Med* 2005; 352:476-87.
62. Rosenberg R, Engel J, Bruns C et al. The prognostic value of lymph node ratio in a population-based collective of colorectal cancer patients. *Ann Surg* 2010; 251:1070-8.
63. Cserni G, Vinh-Hung V, Burzykowski T. Is there a minimum number of lymph nodes that should be histologically assessed for a reliable nodal staging of T3N0M0 colorectal carcinomas? *J Surg Oncol* 2002; 81:63-9.
64. Kelder W, Inberg B, Schaapveld M, Karrenbeld A, Grond J, Wiggers T, Plukker JT. Impact of the number of histologically examined lymph nodes on prognosis in colon cancer: a population-based study in the Netherlands. *Dis Colon Rectum* 2009; 52:260-7.
65. Nelson H, Petrelli N, Carlin A et al. Guidelines 2000 for colon and rectal cancer surgery. *J Natl Cancer Inst* 2001; 93:583-96.
66. Joseph NE, Sigurdson ER, Hanlon AL et al. Accuracy of determining nodal negativity in colorectal cancer on the basis of the number of nodes retrieved on resection. *Ann Surg Oncol* 2003; 10:213-8.
67. Berger AC, Sigurdson ER, LeVoyer T et al. Colon cancer survival is associated with decreasing ratio of metastatic to examined lymph nodes. *J Clin Oncol* 2005; 23:8706-12.
68. George S, Primrose J, Talbot R et al. Will Rogers revisited: prospective observational study of survival of 3592 patients with colorectal cancer according to number of nodes examined by pathologists. *Br J Cancer* 2006; 95:841-7.
69. Lindboe CF. Lymph node harvest in colorectal adenocarcinoma specimens: the impact of improved fixation and examination procedures. *APMIS* 2011; 119:347-55.
70. Soreide K, Nedrebo BS, Soreide JA, Slewa A, Korner H. Lymph node harvest in colon cancer: influence of microsatellite instability and proximal tumor location. *World J Surg* 2009; 33:2695-703.
71. Belt EJ, te Velde EA, Krijgsman O et al. High lymph node yield is related to microsatellite instability in colon cancer. *Ann Surg Oncol* 2012; 19:1222-30.
72. Gilbert SM. Separating surgical quality from causality--gaining perspective in the debate on lymph node count and extent of lymphadenectomy. *Cancer* 2008; 112:2331-3.
73. Wong SL, Ji H, Hollenbeck BK, Morris AM, Baser O, Birkmeyer JD. Hospital lymph node examination rates and survival after resection for colon cancer. *JAMA* 2007; 298:2149-54.
74. Deschoolmeester V, Baay M, Van Marck E, Weyler J, Vermeulen P, Lardon F, Vermorken JB. Tumor infiltrating lymphocytes: an intriguing player in the survival of colorectal cancer patients. *BMC Immunol* 2010; 11:19.

75. Nosho K, Baba Y, Tanaka N et al. Tumour-infiltrating T-cell subsets, molecular changes in colorectal cancer, and prognosis: cohort study and literature review. *J Pathol* 2010; 222:350-66.
76. Ceelen W, Van Nieuwenhove Y, Pattyn P. Prognostic value of the lymph node ratio in stage III colorectal cancer: a systematic review. *Ann Surg Oncol* 2010; 17:2847-55.
77. Dekker JW, Peeters KC, Putter H, Vahrmeijer AL, van de Velde CJ. Metastatic lymph node ratio in stage III rectal cancer; prognostic significance in addition to the 7th edition of the TNM classification. *Eur J Surg Oncol* 2010; 36:1180-6.
78. Doll D, Gertler R, Maak M et al. Reduced lymph node yield in rectal carcinoma specimen after neoadjuvant radiochemotherapy has no prognostic relevance. *World J Surg* 2009; 33:340-7.
79. Tsai CJ, Crane CH, Skibber JM et al. Number of lymph nodes examined and prognosis among pathologically lymph node-negative patients after preoperative chemoradiation therapy for rectal adenocarcinoma. *Cancer* 2011; 117:3713-22.
80. Habr-Gama A, Perez RO, Proscurschim I et al. Absence of lymph nodes in the resected specimen after radical surgery for distal rectal cancer and neoadjuvant chemoradiation therapy: what does it mean? *Dis Colon Rectum* 2008; 51:277-83.
81. Morcos B, Baker B, Al Masri M, Haddad H, Hashem S. Lymph node yield in rectal cancer surgery: effect of preoperative chemoradiotherapy. *Eur J Surg Oncol* 2010; 36:345-9.
82. Kim YW, Kim NK, Min BS, Lee KY, Sohn SK, Cho CH. The influence of the number of retrieved lymph nodes on staging and survival in patients with stage II and III rectal cancer undergoing tumor-specific mesorectal excision. *Ann Surg* 2009; 249:965-72.
83. Tepper JE, O'Connell MJ, Niedzwiecki D et al. Impact of number of nodes retrieved on outcome in patients with rectal cancer. *J Clin Oncol* 2001; 19:157-63.
84. Burton S, Norman AR, Brown G, Abulafi AM, Swift RI. Predictive poor prognostic factors in colonic carcinoma. *Surg Oncol* 2006; 15:71-8.
85. Benson AB, III, Schrag D, Somerfield MR et al. American Society of Clinical Oncology recommendations on adjuvant chemotherapy for stage II colon cancer. *J Clin Oncol* 2004; 22:3408-19.
86. Gill S, Loprinzi CL, Sargent DJ et al. Pooled analysis of fluorouracil-based adjuvant therapy for stage II and III colon cancer: who benefits and by how much? *J Clin Oncol* 2004; 22:1797-806.
87. Stoffel E, Mukherjee B, Raymond VM et al. Calculation of risk of colorectal and endometrial cancer among patients with Lynch syndrome. *Gastroenterology* 2009; 137:1621-7.
88. Umar A, Boland CR, Terdiman JP et al. Revised Bethesda Guidelines for hereditary nonpolyposis colorectal cancer (Lynch syndrome) and microsatellite instability. *J Natl Cancer Inst* 2004; 96:261-8.
89. Vasen HF, Moslein G, Alonso A et al. Guidelines for the clinical management of Lynch syndrome (hereditary non-polyposis cancer). *J Med Genet* 2007; 44:353-62.
90. Half E, Bercovich D, Rozen P. Familial adenomatous polyposis. *Orphanet J Rare Dis* 2009; 4:22.
91. Lacy AM, Garcia-Valdecasas JC, Delgado S, Castells A, Taura P, Pique JM, Visa J. Laparoscopy-assisted colectomy versus open colectomy for treatment of non-metastatic colon cancer: a randomised trial. *Lancet* 2002; 359:2224-9.
92. Weeks JC, Nelson H, Gelber S, Sargent D, Schroeder G. Short-term quality-of-life outcomes following laparoscopic-assisted colectomy vs open colectomy for colon cancer: a randomized trial. *JAMA* 2002; 287:321-8.
93. Schwenk W, Haase O, Neudecker J, Muller JM. Short term benefits for laparoscopic colorectal resection. *Cochrane Database Syst Rev* 2005;CD003145.
94. Bai HL, Chen B, Zhou Y, Wu XT. Five-year long-term outcomes of laparoscopic surgery for colon cancer. *World J Gastroenterol* 2010; 16:4992-7.
95. Tjandra JJ, Chan MK. Systematic review on the short-term outcome of laparoscopic resection for colon and rectosigmoid cancer. *Colorectal Dis* 2006; 8:375-88.
96. Kuhry E, Schwenk WF, Gaupset R, Romild U, Bonjer HJ. Long-term results of laparoscopic colorectal cancer resection. *Cochrane Database Syst Rev* 2008;CD003432.
97. Gervaz P, Pikarsky A, Utech M et al. Converted laparoscopic colorectal surgery. *Surg Endosc* 2001; 15:827-32.

98. Veldkamp R, Gholghesaei M, Bonjer HJ et al. Laparoscopic resection of colon Cancer: consensus of the European Association of Endoscopic Surgery (EAES). *Surg Endosc* 2004; 18:1163-85.
99. Michel Wouters E-HERT. Dutch Institute for Clinical Auditing. 2011. RefType: Report
100. White I, Greenberg R, Itah R, Inbar R, Schneebaum S, Avital S. Impact of conversion on short and long-term outcome in laparoscopic resection of curable colorectal cancer. *JLS* 2011; 15:182-7.
101. Marusch F, Gastinger I, Schneider C et al. Importance of conversion for results obtained with laparoscopic colorectal surgery. *Dis Colon Rectum* 2001; 44:207-14.
102. Tekkis PP, Senagore AJ, Delaney CP. Conversion rates in laparoscopic colorectal surgery: a predictive model with 1253 patients. *Surg Endosc* 2005; 19:47-54.
103. Kapiteijn E, Marijnen CA, Nagtegaal ID et al. Preoperative radiotherapy combined with total mesorectal excision for resectable rectal cancer. *N Engl J Med* 2001; 345:638-46.
104. Martling AL, Holm T, Rutqvist LE, Moran BJ, Heald RJ, Cedemark B. Effect of a surgical training programme on outcome of rectal cancer in the County of Stockholm. Stockholm Colorectal Cancer Study Group, Basingstoke Bowel Cancer Research Project. *Lancet* 2000; 356:93-6.
105. Nagtegaal ID, Quirke P. What is the role for the circumferential margin in the modern treatment of rectal cancer? *J Clin Oncol* 2008; 26:303-12.
106. Valentini V, Beets-Tan R, Borrás JM et al. Evidence and research in rectal cancer. *Radiother Oncol* 2008; 87:449-74.
107. den Dulk M, Marijnen CA, Putter H et al. Risk factors for adverse outcome in patients with rectal cancer treated with an abdominoperineal resection in the total mesorectal excision trial. *Ann Surg* 2007; 246:83-90.
108. Martijnse IS, Dudink RL, West NP et al. Focus on extralevator perineal dissection in supine position for low rectal cancer has led to better quality of surgery and oncologic outcome. *Ann Surg Oncol* 2012; 19:786-93.
109. Bipat S, Glas AS, Slors FJ, Zwinderman AH, Bossuyt PM, Stoker J. Rectal cancer: local staging and assessment of lymph node involvement with endoluminal US, CT, and MR imaging--a meta-analysis. *Radiology* 2004; 232:773-83.
110. Al Sukhni E, Milot L, Fruitman M et al. Diagnostic Accuracy of MRI for Assessment of T Category, Lymph Node Metastases, and Circumferential Resection Margin Involvement in Patients with Rectal Cancer: A Systematic Review and Meta-analysis. *Ann Surg Oncol* 2012.
111. Lahaye MJ, Engelen SM, Nelemans PJ, Beets GL, van de Velde CJ, van Engelshoven JM, Beets-Tan RG. Imaging for predicting the risk factors--the circumferential resection margin and nodal disease--of local recurrence in rectal cancer: a meta-analysis. *Semin Ultrasound CT MR* 2005; 26:259-68.
112. Beets-Tan RG, Beets GL. Local staging of rectal cancer: a review of imaging. *J Magn Reson Imaging* 2011; 33:1012-9.
113. van Gijn W, Marijnen CA, Nagtegaal ID et al. Preoperative radiotherapy combined with total mesorectal excision for resectable rectal cancer: 12-year follow-up of the multicentre, randomised controlled TME trial. *Lancet Oncol* 2011; 12:575-82.
114. Peeters KC, Marijnen CA, Nagtegaal ID et al. The TME trial after a median follow-up of 6 years: increased local control but no survival benefit in irradiated patients with resectable rectal carcinoma. *Ann Surg* 2007; 246:693-701.
115. De Caluwe L, Van Nieuwenhove Y, Ceelen WP. Preoperative chemoradiation versus radiation alone for stage II and III resectable rectal cancer. *Cochrane Database Syst Rev* 2013; 2:CD006041.
116. Bonnetain F, Bosset JF, Gerard JP et al. What is the clinical benefit of preoperative chemoradiotherapy with 5FU/leucovorin for T3-4 rectal cancer in a pooled analysis of EORTC 22921 and FFCD 9203 trials: surrogacy in question? *Eur J Cancer* 2012; 48:1781-90.
117. Bosset JF, Calais G, Daban A et al. Preoperative chemoradiotherapy versus preoperative radiotherapy in rectal cancer patients: assessment of acute toxicity and treatment compliance. Report of the 22921 randomised trial conducted by the EORTC Radiotherapy Group. *Eur J Cancer* 2004; 40:219-24.
118. Peeters KC, van de Velde CJ, Leer JW et al. Late side effects of short-course preoperative radiotherapy combined with total mesorectal excision for rectal cancer: increased bowel dysfunction in irradiated patients--a Dutch colorectal cancer group study. *J Clin Oncol* 2005; 23:6199-206.

119. Bullard KM, Trudel JL, Baxter NN, Rothenberger DA. Primary perineal wound closure after preoperative radiotherapy and abdominoperineal resection has a high incidence of wound failure. *Dis Colon Rectum* 2005; 48:438-43.
120. Concept richtlijn Colorectaal carcinoom en colorectale levermetastasen 2013. 2013. Ref Type: Report (The Dutch concept guideline colorectal cancer and colorectal liver metastases)
121. Stelzner S, Koehler C, Stelzer J, Sims A, Witzigmann H. Extended abdominoperineal excision vs. standard abdominoperineal excision in rectal cancer--a systematic overview. *Int J Colorectal Dis* 2011; 26:1227-40.
122. Bennis M, Parc Y, Lefevre JH, Chafai N, Attal E, Tiret E. Morbidity risk factors after low anterior resection with total mesorectal excision and coloanal anastomosis: a retrospective series of 483 patients. *Ann Surg* 2012; 255:504-10.
123. Law WL, Chu KW. Anterior resection for rectal cancer with mesorectal excision: a prospective evaluation of 622 patients. *Ann Surg* 2004; 240:260-8.
124. Leroy J, Jamali F, Forbes L, Smith M, Rubino F, Mutter D, Marescaux J. Laparoscopic total mesorectal excision (TME) for rectal cancer surgery: long-term outcomes. *Surg Endosc* 2004; 18:281-9.
125. Matthiessen P, Hallbook O, Andersson M, Rutegard J, Sjudahl R. Risk factors for anastomotic leakage after anterior resection of the rectum. *Colorectal Dis* 2004; 6:462-9.
126. Jung SH, Yu CS, Choi PW, Kim DD, Park IJ, Kim HC, Kim JC. Risk factors and oncologic impact of anastomotic leakage after rectal cancer surgery. *Dis Colon Rectum* 2008; 51:902-8.
127. Kim E, Hwang JM, Garcia-Aguilar J. Local excision for rectal carcinoma. *Clin Colorectal Cancer* 2008; 7:376-85.
128. Tsai BM, Finne CO, Nordenstam JF, Christoforidis D, Madoff RD, Mellgren A. Transanal endoscopic microsurgery resection of rectal tumors: outcomes and recommendations. *Dis Colon Rectum* 2010; 53:16-23.
129. Borschitz T, Wachtlin D, Mohler M, Schmidberger H, Junginger T. Neoadjuvant chemoradiation and local excision for T2-3 rectal cancer. *Ann Surg Oncol* 2008; 15:712-20.
130. Smith RA, Anaya DA, Albo D, Artinyan A. A stepwise approach to transanal endoscopic microsurgery for rectal cancer using a single-incision laparoscopic port. *Ann Surg Oncol* 2012; 19:2859.
131. Protocol CARTS. 2013. Ref Type: Report
132. Bokkerink GM, de Graaf EJ, Punt CJ et al. The CARTS study: Chemoradiation therapy for rectal cancer in the distal rectum followed by organ-sparing transanal endoscopic microsurgery. *BMC Surg* 2011; 11:34.
133. Petersen SH, Harling H, Kirkeby LT, Wille-Jorgensen P, Mocellin S. Postoperative adjuvant chemotherapy in rectal cancer operated for cure. *Cochrane Database Syst Rev* 2012; 3:CD004078.
134. Andre T, Boni C, Navarro M et al. Improved overall survival with oxaliplatin, fluorouracil, and leucovorin as adjuvant treatment in stage II or III colon cancer in the MOSAIC trial. *J Clin Oncol* 2009; 27:3109-16.
135. Andre T, Boni C, Navarro M et al. Improved overall survival with oxaliplatin, fluorouracil, and leucovorin as adjuvant treatment in stage II or III colon cancer in the MOSAIC trial. *J Clin Oncol* 2009; 27:3109-16.
136. Kuebler JP, Wieand HS, O'Connell MJ et al. Oxaliplatin combined with weekly bolus fluorouracil and leucovorin as surgical adjuvant chemotherapy for stage II and III colon cancer: results from NSABP C-07. *J Clin Oncol* 2007; 25:2198-204.
137. Andre T, Sargent D, Tabernero J et al. Current issues in adjuvant treatment of stage II colon cancer. *Ann Surg Oncol* 2006; 13:887-98.
138. Gray R, Barnwell J, McConkey C, Hills RK, Williams NS, Kerr DJ. Adjuvant chemotherapy versus observation in patients with colorectal cancer: a randomised study. *Lancet* 2007; 370:2020-9.
139. Sobrero A. Should adjuvant chemotherapy become standard treatment for patients with stage II colon cancer? For the proposal. *Lancet Oncol* 2006; 7:515-6.
140. Le Voyer TE, Sigurdson ER, Hanlon AL, Mayer RJ, Macdonald JS, Catalano PJ, Haller DG. Colon cancer survival is associated with increasing number of lymph nodes analyzed: a secondary survey of intergroup trial INT-0089. *J Clin Oncol* 2003; 21:2912-9.

141. Kabbinnar FF, Schulz J, McCleod M et al. Addition of bevacizumab to bolus fluorouracil and leucovorin in first-line metastatic colorectal cancer: results of a randomized phase II trial. *J Clin Oncol* 2005; 23:3697-705.
142. Giantonio BJ, Catalano PJ, Meropol NJ et al. Bevacizumab in combination with oxaliplatin, fluorouracil, and leucovorin (FOLFOX4) for previously treated metastatic colorectal cancer: results from the Eastern Cooperative Oncology Group Study E3200. *J Clin Oncol* 2007; 25:1539-44.
143. Hurwitz H, Fehrenbacher L, Novotny W et al. Bevacizumab plus irinotecan, fluorouracil, and leucovorin for metastatic colorectal cancer. *N Engl J Med* 2004; 350:2335-42.
144. Peeters M, Price TJ, Cervantes A et al. Randomized phase III study of panitumumab with fluorouracil, leucovorin, and irinotecan (FOLFIRI) compared with FOLFIRI alone as second-line treatment in patients with metastatic colorectal cancer. *J Clin Oncol* 2010; 28:4706-13.
145. Mitchell EP, Piperdi B, Lacouture ME et al. The efficacy and safety of panitumumab administered concomitantly with FOLFIRI or Irinotecan in second-line therapy for metastatic colorectal cancer: the secondary analysis from STEPP (Skin Toxicity Evaluation Protocol With Panitumumab) by KRAS status. *Clin Colorectal Cancer* 2011; 10:333-9.
146. Seymour MT, Stenning SP, Cassidy J. Attitudes and practice in the management of metastatic colorectal cancer in Britain. Colorectal Cancer Working Party of the UK Medical Research Council. *Clin Oncol (R Coll Radiol)* 1997; 9:248-51.
147. Simmonds PC. Palliative chemotherapy for advanced colorectal cancer: systematic review and meta-analysis. Colorectal Cancer Collaborative Group. *BMJ* 2000; 321:531-5.
148. Sadahiro S, Suzuki T, Ishikawa K et al. Recurrence patterns after curative resection of colorectal cancer in patients followed for a minimum of ten years. *Hepatogastroenterology* 2003; 50:1362-6.
149. Neal CP, Garcea G, Doucas H, Manson MM, Sutton CD, Dennison AR, Berry DP. Molecular prognostic markers in resectable colorectal liver metastases: a systematic review. *Eur J Cancer* 2006; 42:1728-43.
150. Abdalla EK, Vauthey JN, Ellis LM et al. Recurrence and outcomes following hepatic resection, radiofrequency ablation, and combined resection/ablation for colorectal liver metastases. *Ann Surg* 2004; 239:818-25.
151. Choti MA, Sitzmann JV, Tiburi MF et al. Trends in long-term survival following liver resection for hepatic colorectal metastases. *Ann Surg* 2002; 235:759-66.
152. Pawlik TM, Izzo F, Cohen DS, Morris JS, Curley SA. Combined resection and radiofrequency ablation for advanced hepatic malignancies: results in 172 patients. *Ann Surg Oncol* 2003; 10:1059-69.
153. Rees M, Tekkis PP, Welsh FK, O'Rourke T, John TG. Evaluation of long-term survival after hepatic resection for metastatic colorectal cancer: a multifactorial model of 929 patients. *Ann Surg* 2008; 247:125-35.
154. Fong Y, Fortner J, Sun RL, Brennan MF, Blumgart LH. Clinical score for predicting recurrence after hepatic resection for metastatic colorectal cancer: analysis of 1001 consecutive cases. *Ann Surg* 1999; 230:309-18.
155. Kanas GP, Taylor A, Primrose JN et al. Survival after liver resection in metastatic colorectal cancer: review and meta-analysis of prognostic factors. *Clin Epidemiol* 2012; 4:283-301.
156. Farid SG, Aldouri A, Morris-Stiff G, Khan AZ, Toogood GJ, Lodge JP, Prasad KR. Correlation between postoperative infective complications and long-term outcomes after hepatic resection for colorectal liver metastasis. *Ann Surg* 2010; 251:91-100.
157. Vauthey JN, Pawlik TM, Abdalla EK et al. Is extended hepatectomy for hepatobiliary malignancy justified? *Ann Surg* 2004; 239:722-30.
158. Tepper JE, O'Connell M, Hollis D, Niedzwiecki D, Cooke E, Mayer RJ. Analysis of surgical salvage after failure of primary therapy in rectal cancer: results from Intergroup Study 0114. *J Clin Oncol* 2003; 21:3623-8.
159. Regnard JF, Grunenwald D, Spaggiari L et al. Surgical treatment of hepatic and pulmonary metastases from colorectal cancers. *Ann Thorac Surg* 1998; 66:214-8.
160. Rena O, Casadio C, Viano F, Cristofori R, Ruffini E, Filosso PL, Maggi G. Pulmonary resection for metastases from colorectal cancer: factors influencing prognosis. Twenty-year experience. *Eur J Cardiothorac Surg* 2002; 21:906-12.

161. Pfannschmidt J, Dienemann H, Hoffmann H. Surgical resection of pulmonary metastases from colorectal cancer: a systematic review of published series. *Ann Thorac Surg* 2007; 84:324-38.
162. Hughes KS, Simon R, Songhorabodi S et al. Resection of the liver for colorectal carcinoma metastases: a multi-institutional study of patterns of recurrence. *Surgery* 1986; 100:278-84.
163. Nordlinger B, Quilichini MA, Parc R, Hannoun L, Delva E, Huguet C. Hepatic resection for colorectal liver metastases. Influence on survival of preoperative factors and surgery for recurrences in 80 patients. *Ann Surg* 1987; 205:256-63.
164. Sorbye H, Mauer M, Gruenberger T et al. Predictive factors for the benefit of perioperative FOLFOX for resectable liver metastasis in colorectal cancer patients (EORTC Intergroup Trial 40983). *Ann Surg* 2012; 255:534-9.
165. Ruers T, Punt C, Van Coevorden F et al. Radiofrequency ablation combined with systemic treatment versus systemic treatment alone in patients with non-resectable colorectal liver metastases: a randomized EORTC Intergroup phase II study (EORTC 40004). *Ann Oncol* 2012.
166. Tan KK, Lopes Gde L, Jr., Sim R. How uncommon are isolated lung metastases in colorectal cancer? A review from database of 754 patients over 4 years. *J Gastrointest Surg* 2009; 13:642-8.
167. Bruin SC, Verwaal VJ, Vincent A, Van't Veer LJ, van Velthuysen ML. A clinicopathologic analysis of peritoneal metastases of colorectal and appendiceal origin. *Ann Surg Oncol* 2010; 17:2330-40.
168. Verwaal VJ, Bruin S, Boot H, van Slooten G, van Tinteren H. 8-year follow-up of randomized trial: cytoreduction and hyperthermic intraperitoneal chemotherapy versus systemic chemotherapy in patients with peritoneal carcinomatosis of colorectal cancer. *Ann Surg Oncol* 2008; 15:2426-32.
169. Ronnett BM, Zahn CM, Kurman RJ, Kass ME, Sugarbaker PH, Shmookler BM. Disseminated peritoneal adenomucinosis and peritoneal mucinous carcinomatosis. A clinicopathologic analysis of 109 cases with emphasis on distinguishing pathologic features, site of origin, prognosis, and relationship to „pseudomyxoma peritonei“. *Am J Surg Pathol* 1995; 19:1390-408.
170. Yan TD, Bijelic L, Sugarbaker PH. Critical analysis of treatment failure after complete cytoreductive surgery and perioperative intraperitoneal chemotherapy for peritoneal dissemination from appendiceal mucinous neoplasms. *Ann Surg Oncol* 2007; 14:2289-99.
171. Verwaal VJ, van Tinteren H, van Ruth S, Zoetmulder FA. Predicting the survival of patients with peritoneal carcinomatosis of colorectal origin treated by aggressive cytoreduction and hyperthermic intraperitoneal chemotherapy. *Br J Surg* 2004; 91:739-46.
172. Glehen O, Kwiatkowski F, Sugarbaker PH et al. Cytoreductive surgery combined with perioperative intraperitoneal chemotherapy for the management of peritoneal carcinomatosis from colorectal cancer: a multi-institutional study. *J Clin Oncol* 2004; 22:3284-92.
173. Elias D, Blot F, El Otmany A et al. Curative treatment of peritoneal carcinomatosis arising from colorectal cancer by complete resection and intraperitoneal chemotherapy. *Cancer* 2001; 92:71-6.
174. da Silva RG, Sugarbaker PH. Analysis of prognostic factors in seventy patients having a complete cytoreduction plus perioperative intraperitoneal chemotherapy for carcinomatosis from colorectal cancer. *J Am Coll Surg* 2006; 203:878-86.
175. Yan TD, Chu F, Links M, Kam PC, Glenn D, Morris DL. Cytoreductive surgery and perioperative intraperitoneal chemotherapy for peritoneal carcinomatosis from colorectal carcinoma: non-mucinous tumour associated with an improved survival. *Eur J Surg Oncol* 2006; 32:1119-24.
176. Glehen O, Cotte E, Schreiber V, Sayag-Beaujard AC, Vignal J, Gilly FN. Intraperitoneal chemohyperthermia and attempted cytoreductive surgery in patients with peritoneal carcinomatosis of colorectal origin. *Br J Surg* 2004; 91:747-54.
177. Bohm B, Schwenk W, Hucke HP, Stock W. Does methodic long-term follow-up affect survival after curative resection of colorectal carcinoma? *Dis Colon Rectum* 1993; 36:280-6.
178. Tjandra JJ, Chan MK. Follow-up after curative resection of colorectal cancer: a meta-analysis. *Dis Colon Rectum* 2007; 50:1783-99.
179. Labianca R, Nordlinger B, Beretta GD, Brouquet A, Cervantes A. Primary colon cancer: ESMO Clinical Practice Guidelines for diagnosis, adjuvant treatment and follow-up. *Ann Oncol* 2010; 21 Suppl 5:v70-v77.
180. Van Cutsem E, Oliveira J. Advanced colorectal cancer: ESMO clinical recommendations for diagnosis, treatment and follow-up. *Ann Oncol* 2009; 20 Suppl 4:61-3.

181. Tsikitis VL, Malireddy K, Green EA et al. Postoperative surveillance recommendations for early stage colon cancer based on results from the clinical outcomes of surgical therapy trial. *J Clin Oncol* 2009; 27:3671-6.
182. Goldstein MJ, Mitchell EP. Carcinoembryonic antigen in the staging and follow-up of patients with colorectal cancer. *Cancer Invest* 2005; 23:338-51.
183. Desch CE, Benson AB, III, Somerfield MR et al. Colorectal cancer surveillance: 2005 update of an American Society of Clinical Oncology practice guideline. *J Clin Oncol* 2005; 23:8512-9.
184. Hardcastle JD, Chamberlain JO, Robinson MH et al. Randomised controlled trial of faecal-occult-blood screening for colorectal cancer. *Lancet* 1996; 348:1472-7.
185. Kronborg O, Fenger C, Olsen J, Jorgensen OD, Sondergaard O. Randomised study of screening for colorectal cancer with faecal-occult-blood test. *Lancet* 1996; 348:1467-71.
186. Mandel JS, Bond JH, Church TR, Snover DC, Bradley GM, Schuman LM, Ederer F. Reducing mortality from colorectal cancer by screening for fecal occult blood. Minnesota Colon Cancer Control Study. *N Engl J Med* 1993; 328:1365-71.
187. Heresbach D, Manfredi S, D'halluin PN, Bretagne JF, Branger B. Review in depth and meta-analysis of controlled trials on colorectal cancer screening by faecal occult blood test. *Eur J Gastroenterol Hepatol* 2006; 18:427-33.
188. Benson VS, Patnick J, Davies AK, Nadel MR, Smith RA, Atkin WS. Colorectal cancer screening: a comparison of 35 initiatives in 17 countries. *Int J Cancer* 2008; 122:1357-67.
189. Hewitson P, Glasziou P, Irwig L, Towler B, Watson E. Screening for colorectal cancer using the faecal occult blood test, Hemoccult. *Cochrane Database Syst Rev* 2007;CD001216.
190. Elmunzer BJ, Hayward RA, Schoenfeld PS, Saini SD, Deshpande A, Waljee AK. Effect of flexible sigmoidoscopy-based screening on incidence and mortality of colorectal cancer: a systematic review and meta-analysis of randomized controlled trials. *PLoS Med* 2012; 9:e1001352.
191. Arango D, Laiho P, Kokko A et al. Gene-expression profiling predicts recurrence in Dukes' C colorectal cancer. *Gastroenterology* 2005; 129:874-84.
192. Barrier A, Boelle PY, Roser F et al. Stage II colon cancer prognosis prediction by tumor gene expression profiling. *J Clin Oncol* 2006; 24:4685-91.
193. Koehler A, Bataille F, Schmid C et al. Gene expression profiling of colorectal cancer and metastases divides tumours according to their clinicopathological stage. *J Pathol* 2004; 204:65-74.
194. Lin YH, Friederichs J, Black MA et al. Multiple gene expression classifiers from different array platforms predict poor prognosis of colorectal cancer. *Clin Cancer Res* 2007; 13:498-507.
195. Wang Y, Jatkoa T, Zhang Y et al. Gene expression profiles and molecular markers to predict recurrence of Dukes' B colon cancer. *J Clin Oncol* 2004; 22:1564-71.
196. Eschrich S, Yang I, Bloom G et al. Molecular staging for survival prediction of colorectal cancer patients. *J Clin Oncol* 2005; 23:3526-35.
197. Komuro K, Tada M, Tamoto E et al. Right- and left-sided colorectal cancers display distinct expression profiles and the anatomical stratification allows a high accuracy prediction of lymph node metastasis. *J Surg Res* 2005; 124:216-24.
198. Salazar R, Roepman P, Capella G et al. Gene expression signature to improve prognosis prediction of stage II and III colorectal cancer. *J Clin Oncol* 2011; 29:17-24.
199. Landemaine T, Jackson A, Bellahcene A et al. A six-gene signature predicting breast cancer lung metastasis. *Cancer Res* 2008; 68:6092-9.
200. Smid M, Wang Y, Klijn JG et al. Genes associated with breast cancer metastatic to bone. *J Clin Oncol* 2006; 24:2261-7.
201. Smid M, Wang Y, Zhang Y et al. Subtypes of breast cancer show preferential site of relapse. *Cancer Res* 2008; 68:3108-14.