



Universiteit  
Leiden  
The Netherlands

## **Nutritional status in chronic dialysis patients : associations with development of disease and survival**

Mutsert, R. de

### **Citation**

Mutsert, R. de. (2009, January 29). *Nutritional status in chronic dialysis patients : associations with development of disease and survival*. Retrieved from <https://hdl.handle.net/1887/13440>

Version: Corrected Publisher's Version

License: [Licence agreement concerning inclusion of doctoral thesis in the Institutional Repository of the University of Leiden](#)

Downloaded from: <https://hdl.handle.net/1887/13440>

**Note:** To cite this publication please use the final published version (if applicable).





# 1

## **General introduction**





The main objective of this thesis was to study the association between nutritional status and survival in end-stage renal disease patients who are maintained on a chronic dialysis treatment. This general introduction will describe the epidemiology of chronic kidney disease and its progression to end-stage renal disease, the current state of knowledge about nutritional status in chronic dialysis patients, and how the chapters in this thesis may contribute to our understanding.

## **CHRONIC KIDNEY DISEASE**

Chronic kidney disease is a large public health problem with a prevalence of around 10% in most populations.<sup>1</sup> Chronic kidney disease is characterized by failure of the kidneys to remove waste products and excess fluid from the body. Different degrees of renal dysfunction from the earliest kidney damage to end-stage renal disease have been classified into five stages on the basis of markers of kidney damage and level of kidney function (glomerular filtration rate).<sup>2</sup> The main causes of chronic kidney disease are diabetes mellitus, renal vascular diseases, glomerulonephritis and hypertension.<sup>3</sup> The risk of chronic kidney disease increases with ageing,<sup>2</sup> but also lifestyle factors may play a role in the development of chronic kidney disease. It is known that obesity leads to chronic kidney disease through diabetes mellitus and hypertension, but emerging evidence indicates that obesity may also contribute directly to kidney damage through a cascade of additional hemodynamic, metabolic, and inflammatory mechanisms as well as by mechanical compression.<sup>4-15</sup> In addition, there is evidence that smoking may be a risk factor for chronic kidney disease.<sup>6;16;17</sup> Furthermore, the prevalence of chronic kidney disease is 1.5 times increased in men compared with women,<sup>3</sup> suggesting a sex difference in susceptibility.

Yearly, a small proportion of patients with chronic kidney disease patients reach stage 5, end-stage renal disease, with estimates varying from 0.1 to 2.6 per 100 patients with stage 3 to 4 chronic kidney disease.<sup>1;18</sup> The overall incidence rate of end-stage renal disease is three times higher in the United States (339 per million population in 2004) compared with Northern Europe (110 per million population in 2004), possibly due to a higher prevalence of type 2 diabetes and to differences in

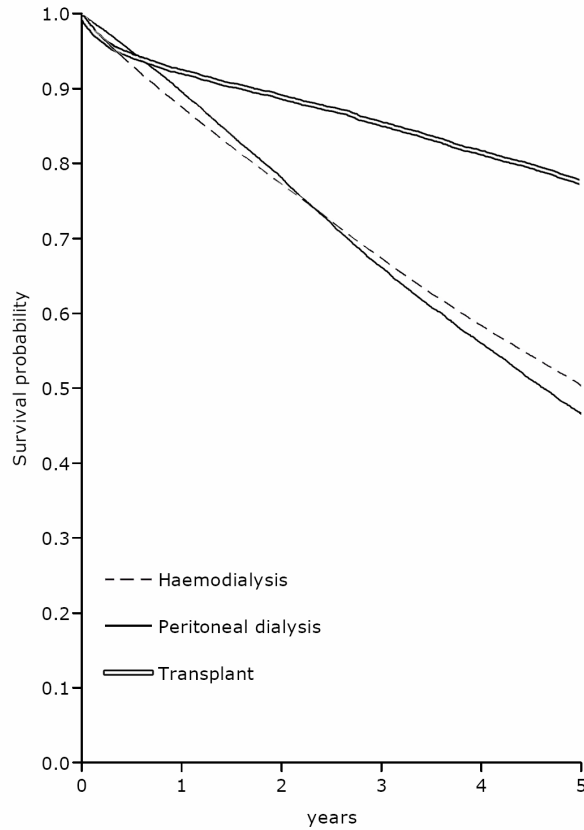


Figure 1. Survival of incident dialysis patients and patients receiving a first transplant in Europe (cohort 1996-2000), adjusted for age, gender and primary diagnosis.<sup>3</sup>

pre-dialysis care in the US population.<sup>1;3;19;20</sup> Once chronic kidney disease patients progress to end-stage renal disease, renal replacement therapy becomes necessary. Currently, there are about 440 000 prevalent patients registered in Europe who are maintained on a renal replacement therapy.<sup>3;21</sup> Kidney transplantation is the optimal renal replacement treatment for patients with end-stage renal disease. However, not all patients fulfill eligibility criteria to undergo surgery<sup>22</sup> and waiting lists for a matching kidney are long. Furthermore, the probability of graft failure ranges from 6 to 10% in the first year after transplantation,<sup>3</sup> after which dialysis treatment is (again) indicated. Dialysis has provided live-saving renal replacement therapy for patients with end-stage renal disease since the 1960s.<sup>23</sup> Although dialysis



techniques have improved ever since, the mortality of chronic dialysis patients remains alarmingly high world-wide,<sup>24</sup> with an annual mortality of about 20%.<sup>21;25</sup> The survival probabilities of patients with chronic kidney disease in the first five years after the start of hemodialysis treatment, peritoneal dialysis treatment, or after a first transplant in Europe (1996-2000) are shown in figure 1.<sup>3</sup>

## **NUTRITIONAL STATUS IN CHRONIC DIALYSIS PATIENTS**

Nutritional status is one of the risk factors for mortality in chronic dialysis patients. Malnutrition can be defined as a state of nutrition in which an excess or deficiency of energy, protein and other nutrients causes measurable adverse effects on body composition, body function and clinical outcome.<sup>26</sup> Both overnutrition and undernutrition are highly prevalent in the dialysis population. The prevalence of obesity, defined as a BMI > 30 kg/m<sup>2</sup> is estimated around 30% at the start of dialysis in the US.<sup>27</sup> The prevalence of undernutrition, defined as protein-energy wasting,<sup>28</sup> ranges between 29% and 48% at the start of dialysis, depending on the nutritional parameter that has been used.<sup>29-33</sup> Once on dialysis, the prevalence of protein-energy wasting ranges between 23 and 76% in hemodialysis patients and between 18 and 50% in peritoneal dialysis patients.<sup>29;30;34-42</sup> Approximately 10% of these patients suffers from severe protein-energy wasting.<sup>43</sup> The following paragraphs will first describe the obesity-survival paradox and second the current knowledge about protein-energy wasting in the dialysis population.

### **Obesity-survival Paradox**

Whereas obesity is one of the established risk factors for increased morbidity and mortality in the general population,<sup>44-47</sup> many survival studies in hemodialysis patients, however, have indicated opposite associations of obesity.<sup>48-55</sup> Low values for body mass index (BMI) are associated with increased mortality, and higher values for BMI, even morbid obesity, were found to be protective and associated with improved survival in dialysis patients (Figure 2). This obesity-survival paradox in the dialysis population has been referred to as 'reverse epidemiology'<sup>56;57</sup> and has led to the hypothesis that a higher level of adiposity may provide a survival

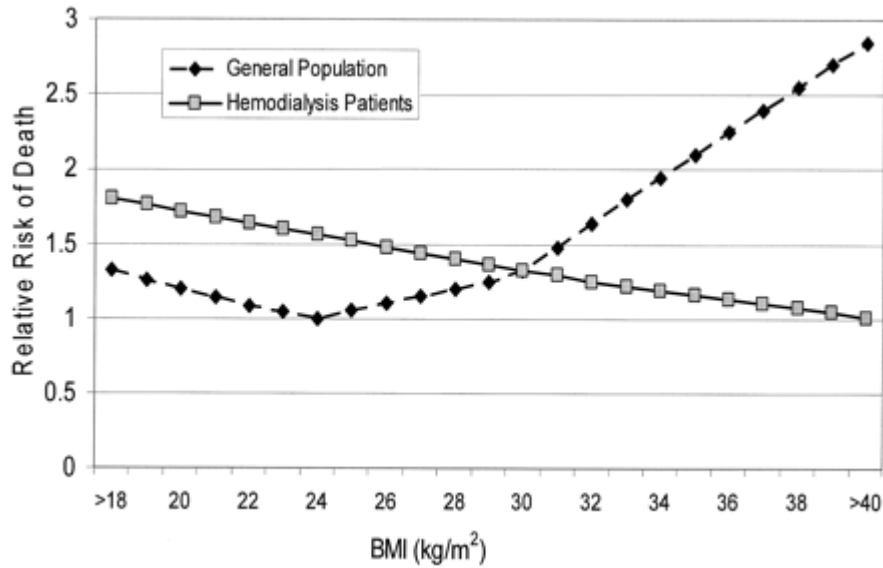


Figure 2. Reverse epidemiology of obesity in dialysis patients compared with the general population. Comparison between the effects of BMI on all-cause mortality in the general population and in the maintenance hemodialysis population. Note that each population has a different follow-up period: 14 y for the general population compared with 4 y for the hemodialysis patients.<sup>57</sup>

advantage for patients with end-stage renal disease.<sup>49,58</sup> This hypothesis has generated much debate about the plausibility of the observed associations and the application of these findings in every day practice.<sup>59-61</sup> Several explanations have been suggested to explain the ‘reverse epidemiology’ of BMI and mortality in dialysis patients: 1) time-discrepancies between the competing risks of adverse events that are associated with overnutrition and undernutrition,<sup>58</sup> 2) a dominant role of wasting in chronic disease states or reverse causation,<sup>56,62</sup> 3) a selected genotype resulting from survival selection during the course of chronic kidney disease progression,<sup>56,63</sup> 4) a more stable hemodynamic status,<sup>56</sup> 5) alterations in circulating cytokines,<sup>56</sup> 6) an endo-toxin-lipoprotein interaction,<sup>56,64</sup> 7) a lower uremic toxin production rate in obesity.<sup>65</sup> However, exact reasons remain unclear. It must be noted that the BMI-mortality association in the general population is based on results from middle-aged populations that have been followed for more than ten years, whereas the dialysis population is older on average and is generally followed

for not more than 2-4 years as a result of the high mortality rate. Thus, short-term mortality in dialysis patients is compared with long-term mortality in the general population. We hypothesized that the age of the patients and the duration of follow-up influences the BMI-mortality association in these patients.

## **Protein–energy Wasting**

### *Definition of Protein-energy Wasting*

No uniform definition of undernutrition exists. Two main types of primary malnutrition have been described as a consequence of inadequate dietary intakes with distinct clinical symptoms: kwashiorkor because of protein depletion, and marasmus because of a depletion of both protein and energy stores.<sup>66,67</sup> Secondary to chronic diseases, often signs of both kwashiorkor and marasmus are found, which has been referred to as protein-energy malnutrition.<sup>66,68</sup> This disease-related malnutrition can be defined as a lack in supply of sufficient energy or protein to meet the body's metabolic demands as a result of either an inadequate dietary intake of protein, intake of poor quality dietary protein, increased requirements because of disease, or increased nutrient losses.<sup>43</sup> In 2007, an expert panel of the International Society of Renal Nutrition and Metabolism (ISRNM) recommended the term 'protein-energy wasting' to indicate loss of body protein mass and fuel reserves in chronic kidney disease.<sup>28</sup> In this thesis, the term protein-energy wasting is used to indicate an undernourished state in dialysis patients, according to this recommendation. In the chapters written before the publication of this recommendation the term malnutrition should be read as protein-energy wasting.

### *Causes of Protein-energy Wasting*

A schematic representation of the possible causes of a decreased nutritional intake and increased nutritional requirements resulting in protein-energy wasting in chronic kidney disease is shown in Figure 3.

In pre-dialysis stages chronic kidney disease patients are advised to reduce their protein intake in order to improve uremic symptoms and to slow the progression to kidney failure.<sup>69-71</sup> Besides this advised dietary protein restriction, the protein intake of chronic kidney disease patients spontaneously reduces as renal function

declines.<sup>72-74</sup> A loss of appetite, nausea and vomiting accompany this uremia-induced anorexia.<sup>75</sup> Other causes of an inadequate dietary intake in these patients include medications, concurrent chronic illnesses, low socio-economic status of the patients and psychological depression.<sup>41</sup>

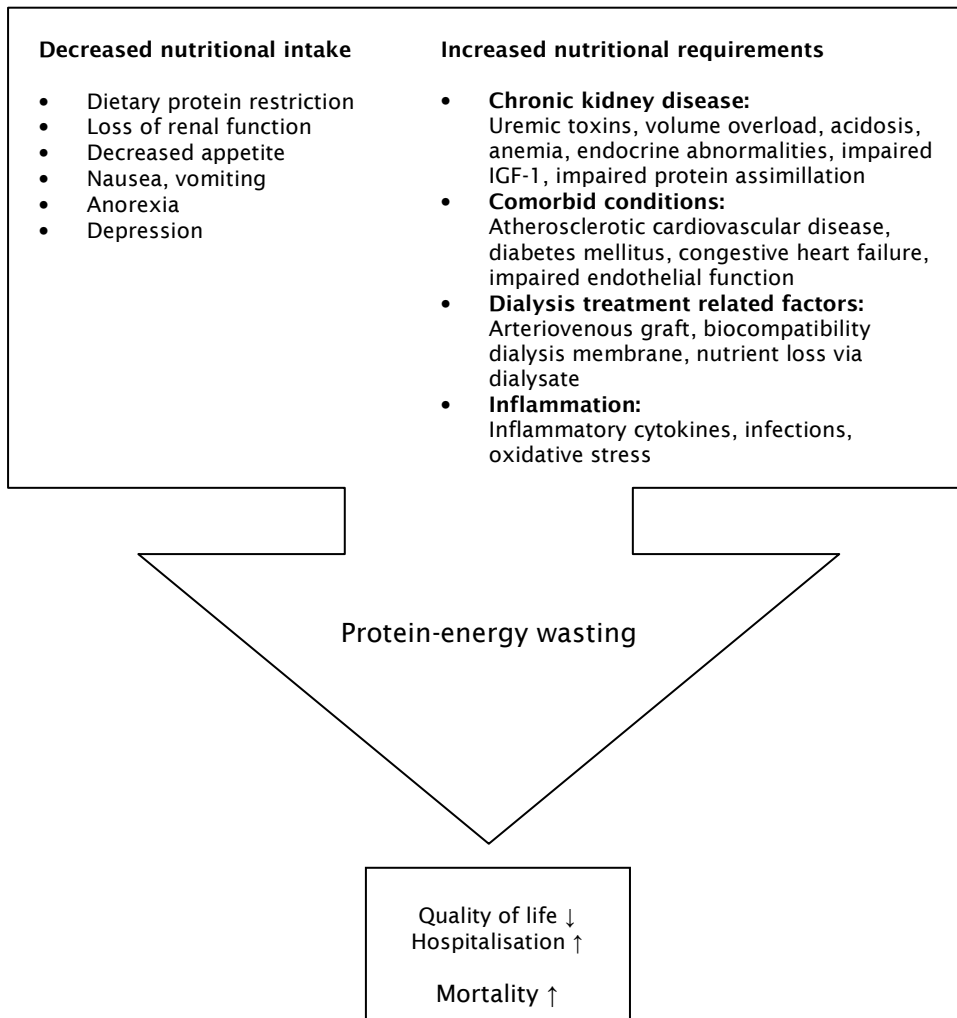


Figure 3. Schematic representation of the possible causes and consequences of protein-energy wasting in chronic kidney disease.

Besides an inadequate dietary intake many factors may increase nutritional requirements once patients are maintained on a chronic dialysis treatment.<sup>76,77</sup> The basal energy expenditure is increased in dialysis patients, thereby increasing energy requirements.<sup>78,79</sup> The dietary protein requirements of dialysis patients are increased because of the loss of amino acids and proteins through the dialysate, and also because of catabolic effects of the disease and dialysis procedure.<sup>41;43;80</sup> Catabolic effects of metabolic acidosis, inflammation and other comorbid conditions, altered amino acid and protein metabolism, hormonal derangements, endocrine disorders and impaired metabolic functions of the kidney stimulate muscle protein degradation via proteolytic pathways.<sup>41;81-86</sup> Furthermore, small intestinal protein assimilation (digestion and absorption) appears impaired in dialysis patients,<sup>87</sup> which may contribute to increased dietary protein requirements. Then, the dialysis procedure itself may confer a catabolic state by means of decreasing the circulating amino acids, accelerating rates of whole body and muscle proteolysis, stimulating muscle release of amino acids, and elevating net whole body and muscle protein loss.<sup>80</sup> All together, these factors may result in a negative nitrogen and energy balance, and consequently result in muscle mass depletion and unintentional weight loss, important characteristics of protein-energy wasting.

#### *Consequences of Protein-energy Wasting*

One of the first studies relating a poor nutritional status to mortality in chronic dialysis patients studied 48 chronic dialysis patients over a two-year period.<sup>88</sup> On the basis of nutritional parameters patients were given a score from 0 ('normal nutritional status') to 8 ('severe protein-caloric malnutrition') at start of the observation. After two years of follow-up the nutritional score was lower among the 39 surviving patients than among the nine patients who died. The authors concluded that chronic dialysis patients with a poor nutritional status have a highly increased mortality and recommended the prevention of protein-caloric malnutrition among dialysis patients as a high priority task.<sup>88</sup> Numerous observational studies have investigated the association of nutritional status with outcome since and related a poor nutritional status to functional limitations,<sup>89</sup> decreased quality of life,<sup>90-92</sup> increased morbidity,<sup>38;93-96</sup> and mortality.<sup>49;93;94;97-106</sup> However, most studies described small sample sizes or prevalent populations, or

used baseline assessments of nutritional status only. It furthermore remains unclear which parameter(s) may best represent a patient's nutritional status.

#### *Assessment of Protein-energy Wasting*

In addition to technical examinations, many clinical and laboratory parameters exist to measure the nutritional status of dialysis patients.<sup>43;107</sup> However, they all capture a different aspect of the nutritional status. Furthermore, many parameters are influenced by the kidney disease, hydration status of the patient or other comorbid conditions that may significantly alter nutritional indices irrespective of changes in true nutritional status.<sup>108</sup> The most commonly used nutritional parameters in the dialysis population and their advantages and disadvantages are listed in Table 1.

Reference standards such as magnetic resonance imaging, total body potassium, or total body nitrogen are often too expensive and time-consuming to use in large survival studies. Therefore, surrogate measures are necessary. It may be evident from Table 1 that a single marker of nutritional status may not be sufficient. According to the ISRNM expert panel, at least three characteristics need to be present to diagnose protein-energy wasting: 1) low serum levels of albumin, pre-albumin or cholesterol, 2) reduced body mass (low or reduced body or fat mass or weight loss with reduced intake of protein and energy), and 3) reduced muscle mass (muscle wasting or sarcopenia, reduced mid-arm muscle circumference).<sup>28</sup> However, there is need for one simple, rapid, inexpensive instrument to assess the nutritional status in clinical practice. The Subjective global assessment of nutritional status (SGA) consists of a clinical judgment on the basis of four subscales representing the patients' recent weight change, dietary intake and gastro-intestinal symptoms, loss of subcutaneous fat, and signs of muscle wasting.<sup>109-111</sup> The SGA may therefore be a candidate measure that provides a comprehensive evaluation of the nutritional status in order to diagnose protein-energy wasting.

Table 1. Commonly used nutritional parameters in chronic dialysis patients: validity, advantages, disadvantages and feasibility in large studies.

	Measure of	Validity	Advantages (+) or disadvantages (-)	Feasibility in large studies
<b>Technical examinations</b>				
Magnetic resonance imaging	Body composition	Very high	- All: expensive, time-consuming, invasive for patients	Very low
Deuterium dilution	Total body water	Very high		Very low
Total body potassium	Body cell mass	Very high		Very low
In vivo neutron capture analysis	Total body nitrogen	Very high		Very low
Body densitometry	Body composition	High		- Assumes constant composition fat free mass <sup>138</sup>
Dual energy X-ray absorptiometry	Bone and soft tissue composition (fat and fat-free)	High	- influence hydration status on estimation of fat-free mass <sup>138</sup>	Intermediate
Bioelectrical impedance analysis	Total body water	High	- Influence of hydration status on estimation of fat-free mass <sup>138</sup>	Intermediate
<b>Clinical parameters</b>				
Body weight, BMI	Body fatness	Intermediate	- Cannot distinguish body fat, muscle mass or water <sup>139</sup>	Very high
Skinfold thickness	Body fat mass	Limited by assumptions of fat distribution, hydration status and inter-observer error <sup>139,141-143</sup>	+ Simple, inexpensive, rapid <sup>142-144</sup>	High
Mid-arm muscle area	Body muscle mass			High
Dietary diaries	Dietary intake	Limited by overestimation daily intake <sup>145</sup>	- Cumbersome for patients	Low
Hand-grip muscle strength	Muscle strength	High <sup>32</sup>	+ Parameter of physical functioning - no predictor of outcome in women <sup>106</sup>	High

	Measure of	Validity	Advantages (+) or disadvantages (-)	Feasibility in large studies
7-point SGA	Recent weight change, dietary intake and GI symptoms, loss of subcutaneous fat mass and muscle wasting	Valid and reliable <sup>101;109;146</sup> Recommended to detect severe protein-energy wasting <sup>107</sup>	+ May represent the overall concept of nutritional status	High
<b>Laboratory parameters</b>				
Serum albumin concentration	Visceral protein concentration, protein intake, inflammation	Limited by influence of inflammation, hepatic synthesis and degradation, metabolic acidosis, insulin resistance, hydration status, losses via urine and the dialysate <sup>132;133;147;148</sup>	- Negative acute phase reactant	Very high
Serum prealbumin concentration	Protein intake and visceral protein generation	Limited by influence inflammation	- Negative acute phase reactant	Very high
Serum cholesterol concentration	Serum cholesterol	Intermediate	- Influenced by lipid lowering medication and inflammation	Very high
Serum creatinine concentration	Protein intake and muscle mass (breakdown product of muscle metabolism)	Low	- Urinary creatinine excretion needs to be considered in nonanuric patients	Very high
Insuline-like growth factor-I	Anabolic hormone that has been related to lean body mass <sup>149</sup>	Intermediate	- influenced by age and inflammation	Very high
nPNA	Estimated protein intake from nitrogen balance	Valid in clinically and metabolically stable patients	- Overestimation protein intake in catabolic situations <sup>150</sup>	Very high

BMI=Body mass index, SGA=Subjective global assessment of nutritional status, GI symptoms=Gastro-intestinal symptoms (loss of appetite, nausea, vomiting and diarrhea), nPNA=normalized Protein Nitrogen Appearance



### *The MIA Syndrome*

During the past decade, the important role of inflammation in the development of protein-energy wasting in chronic kidney disease has been recognized.<sup>31;41;112</sup>

Chronic inflammation is highly prevalent in the dialysis population and defined as a subclinical systemic inflammatory state of the patient characterized by increased concentrations of acute phase proteins as serum C-reactive protein (CRP) and pro-inflammatory cytokines as interleukin(IL)-6, IL-10 and tumor necrosis factor- $\alpha$ .<sup>99;113-117</sup> The causes of inflammation in dialysis patients remain to be resolved. Comorbid conditions, chronic infections and accumulation of advanced glycation end products may play a role.<sup>96</sup> Furthermore, the dialysis procedure itself may be responsible for an inflammatory response.<sup>118</sup>

Inflammation, mediated by pro-inflammatory cytokines, may be associated with an increase in protein catabolism, predisposing to protein-energy wasting in chronic kidney disease.<sup>31</sup> Several studies have shown that concentrations of pro-inflammatory cytokines were associated with basal metabolic rate, appetite and food intake, and muscle wasting.<sup>112;119-121</sup> Chronic inflammation has furthermore been associated with increased cardiovascular comorbidity and mortality, suggesting that inflammatory processes may have a role in both the pathogenesis of atherosclerotic cardiovascular disease and the development of protein-energy wasting in chronic kidney disease patients.<sup>31;122-126</sup> On the basis of the strong associations observed between malnutrition, inflammation and atherosclerosis in the dialysis population, Stenvinkel et al. have proposed that these risk factors may be pathophysiologically linked and thereby constitute a syndrome that carries a high mortality rate.<sup>31;122;125</sup> This syndrome has been referred to as the malnutrition, inflammation and atherosclerosis (MIA) syndrome.<sup>125</sup> Many studies have shown since that malnutrition, inflammation and cardiovascular diseases were interrelated, each contributing to the high mortality in dialysis patients.<sup>99;113;127-131</sup> However, at the best of our knowledge, it is unknown whether these three risk factors are independent risk factors or whether they interact, together resulting in an even higher mortality.

## OBJECTIVES AND OUTLINE OF THE THESIS

The main objective of this thesis was to further study the association between nutritional status and survival in end-stage renal disease patients who are maintained on a chronic dialysis treatment. To place this objective in perspective, we first studied the associations of obesity with the development of chronic kidney disease in the general population and with mortality in the dialysis population. The major part of this thesis investigated the mortality risks of a poor nutritional status as estimated with nutritional parameters such as body mass index (BMI), skinfold thickness, serum albumin and the Subjective global assessment of nutritional status, including interactions with other comorbid conditions. The outline of this thesis will be as follows:

The study in **chapter 2** of this thesis estimated the risks of lifestyle factors, e.g. obesity, physical inactivity and smoking on the development of chronic kidney disease in a health survey of the general population and investigated whether these risks are greater in men than in women.

We hypothesized that the age of the patients and the duration of follow-up influences the BMI-mortality association in chronic dialysis patients, and therefore examined the association between BMI and mortality in the hemodialysis population and the general population when age and duration of follow-up were made strictly comparable in **chapter 3**.

Because BMI can not distinguish between fat mass and muscle mass we studied whether the increased mortality risk associated with a low BMI was due to a low fat mass or due to a low muscle mass, using skinfold measurements in **chapter 4**. We furthermore hypothesized that pre-existing comorbidity and weight loss partly explain the high mortality associated with a low BMI in the dialysis population in **chapter 4**.

In **chapter 5** we studied to what extent the association between serum albumin and mortality was mediated by nutritional status or by inflammatory status. Although it is known for many years that serum albumin is a negative acute phase reactant,<sup>132;133</sup> it is considered as a useful indicator of protein-energy nutritional status in dialysis patients and mentioned in current guidelines,<sup>107</sup> mainly because of its strong

association with outcome.<sup>43</sup> It is yet unclear whether the association between serum albumin and mortality in dialysis patients is only in response to inflammation or also - in part - a consequence of malnutrition.

In **chapter 6** we studied the association of the 7-point Subjective global assessment of nutritional status (SGA) with mortality in the dialysis population. For this study, the SGA had been assessed every six months of follow-up, allowing the estimation of both long-term and time-dependent risks of mortality.

**Chapter 7** addresses the MIA syndrome in the dialysis population. We examined the presence of causal interaction between protein-energy wasting, inflammation and cardiovascular disease in the association with mortality in chronic dialysis patients in order to investigate whether these are three independent risk factors, or whether they interact and thereby result in a higher mortality than expected.

The concept of causal interaction between risk factors is explained in **chapter 8** and several measures are presented to examine the presence of interaction in applied data analysis.

Finally, in **chapter 9** we will reflect on the strengths and limitations of our findings and we will translate our findings into implications and recommendations for future research.

## **STUDY DESIGNS AND DATA USED IN THIS THESIS**

For the majority of our research questions we used data from the Netherlands Cooperative Study on the Adequacy of Dialysis-2 (NECOSAD-II), a prospective, longitudinal, observational multi-center cohort study that has been performed since 1997 in 38 dialysis centers in The Netherlands. Patients with end-stage renal disease who were 18 years of age or older, understanding the Dutch language and starting with their first renal replacement therapy were invited to be included in NECOSAD-II.<sup>134,135</sup> Measures of health and nutritional status were recorded at three months and six months after the start of dialysis and subsequently at intervals of six months until the end of follow-up. In January 2007, 1940 ESRD patients had been included and followed for more than seven years after the start of dialysis until the date of death, the date of lost to follow-up because of kidney transplantation or transfer to a non-participating dialysis centre, the end of the

follow-up at the 1<sup>st</sup> of January 2007, or at a set maximum of follow-up for all patients.

For the research question in chapter 2 we collaborated with the Nord-Trøndelag Health Study 1995-97 (HUNT-II). The HUNT-II Study is a large, population-based, cross-sectional study that was conducted in central Norway with a participation rate of 70.6%.<sup>136</sup> In this health survey of the entire adult population of Nord-Trøndelag County, Norway 30,485 men and 34,708 women were included.<sup>136</sup>

For the research question in chapter 3 we collaborated with the Hoorn Study. Hoorn is a town with 60,000 inhabitants in the northwest part of The Netherlands. The Hoorn Study is a Dutch population-based prospective cohort study of glucose metabolism among 2484 healthy Caucasian adults, aged 50 to 75, which started in 1989.<sup>137</sup>

---

**REFERENCES**

1. Hallan SI, Coresh J, Astor BC, et al.: International comparison of the relationship of chronic kidney disease prevalence and ESRD risk. *J Am Soc Nephrol* 17:2275-2284, 2006
2. National Kidney Foundation. K/DOQI Clinical Practice Guidelines for Chronic Kidney Disease: Evaluation, Classification and Stratification. *Am J Kidney Dis* 39(suppl 1):S1-S000, 2002
3. ERA-EDTA Registry: ERA-EDTA Registry 2005 Annual Report. Academic Medical Center, Department of Medical Informatics, Amsterdam, The Netherlands, 2007
4. Iseki K, Ikemiya Y, Kinjo K, Inoue T, Iseki C, Takishita S: Body mass index and the risk of development of end-stage renal disease in a screened cohort. *Kidney Int* 65:1870-1876, 2004
5. Stengel B, Tarver-Carr ME, Powe NR, Eberhardt MS, Brancati FL: Lifestyle factors, obesity and the risk of chronic kidney disease. *Epidemiology* 14:479-487, 2003
6. Vupputuri S, Sandler DP: Lifestyle risk factors and chronic kidney disease. *Ann Epidemiol* 13:712-720, 2003
7. Kambham N, Markowitz GS, Valeri AM, Lin J, D'Agati VD: Obesity-related glomerulopathy: an emerging epidemic. *Kidney Int* 59:1498-1509, 2001
8. Adelman RD: Obesity and renal disease. *Curr Opin Nephrol Hypertens* 11:331-335, 2002
9. Beddhu S: The body mass index paradox and an obesity, inflammation, and atherosclerosis syndrome in chronic kidney disease. *Semin Dial* 17:229-232, 2004
10. Hall JE: The kidney, hypertension, and obesity. *Hypertension* 41:625-633, 2003
11. Hsu CY, McCulloch CE, Iribarren C, Darbinian J, Go AS: Body mass index and risk for end-stage renal disease. *Ann Intern Med* 144:21-28, 2006
12. Chertow GM, Hsu CY, Johansen KL: The enlarging body of evidence: obesity and chronic kidney disease. *J Am Soc Nephrol* 17:1501-1502, 2006
13. Bosma RJ, Krikken JA, Homan van der Heide JJ, de Jong PE, Navis GJ: Obesity and renal hemodynamics. *Contrib Nephrol* 151:184-202, 2006
14. de Jong PE, Verhave JC, Pinto-Sietsma SJ, Hillege HL: Obesity and target organ damage: the kidney. *Int J Obes Relat Metab Disord* 26(Suppl 4):S21-24, 2002
15. Henegar JR, Bigler SA, Henegar LK, Tyagi SC, Hall JE: Functional and structural changes in the kidney in the early stages of obesity. *J Am Soc Nephrol* 12:1211-1217, 2001
16. Briganti EM, Branley P, Chadban SJ, et al.: Smoking is associated with renal impairment and proteinuria in the normal population: the AusDiab kidney study. *Am J Kidney Dis* 40:704-712, 2002
17. Ejerblad E, Fored CM, Lindblad P, et al.: Association between smoking and chronic renal failure in a nationwide population-based case-control study. *J Am Soc Nephrol* 15:2178-2185, 2004
18. Hallan SI, Dahl K, Oien CM, et al.: Screening strategies for chronic kidney disease in the general population: follow-up of cross sectional health survey. *BMJ* 333:1047, 2006
19. ERA-EDTA Registry: ERA-EDTA Registry 2004 Annual Report. Academic Medical Center, Department of Medical Informatics, Amsterdam, The Netherlands, 2006
20. Jager KJ, van Dijk PC: Has the rise in the incidence of renal replacement therapy in developed countries come to an end? *Nephrol Dial Transplant* 22:678-680, 2007
21. US Renal Data System. Excerpts from the USRDS 2006 Annual Data Report. *Am J Kidney Dis* 49(Suppl 1), S1-S296, 2007
22. Knoll G, Cockfield S, Blydt-Hansen T, et al.: Canadian Society of Transplantation consensus guidelines on eligibility for kidney transplantation. *CMAJ* 173:1181-1184, 2005
23. Scribner BH, Buri R, Caner JE, Hegstrom R, Burnell JM: The treatment of chronic uremia by means of intermittent hemodialysis: a preliminary report. *Trans Am Soc Artif Intern Organs* 6:114-122, 1960

24. Yoshino M, Kuhlmann MK, Kotanko P, et al.: International differences in dialysis mortality reflect background general population atherosclerotic cardiovascular mortality. *J Am Soc Nephrol* 17:3510-3519, 2006
25. van Dijk PC, Jager KJ, Stengel B, Gronhagen-Riska C, Feest TG, Briggs JD: Renal replacement therapy for diabetic end-stage renal disease: data from 10 registries in Europe (1991-2000). *Kidney Int* 67:1489-1499, 2005
26. Stratton RJ, Green CJ, Elia M: Disease-related malnutrition: an Evidence-based approach to treatment. Cambridge, 2003
27. Kramer HJ, Saranathan A, Luke A, et al.: Increasing Body Mass Index and Obesity in the Incident ESRD Population. *Journal of the American Society of Nephrology* 17:1453-1459, 2006
28. Fouque D, Kalantar-Zadeh K, Kopple J, et al.: A proposed nomenclature and diagnostic criteria for protein-energy wasting in acute and chronic kidney disease. *Kidney Int* 73:391-398, 2008
29. Jansen MA, Korevaar JC, Dekker FW, Jager KJ, Boeschoten EW, Krediet RT: Renal function and nutritional status at the start of chronic dialysis treatment. *J Am Soc Nephrol* 12:157-163, 2001
30. Jager KJ, Merkus MP, Huisman RM, et al.: Nutritional status over time in hemodialysis and peritoneal dialysis. *J Am Soc Nephrol* 12:1272-1279, 2001
31. Stenvinkel P, Heimbürger O, Paultre F, et al: Strong association between malnutrition, inflammation, and atherosclerosis in chronic renal failure. *Kidney Int* 55:1899-1911, 1999
32. Heimbürger O, Qureshi AR, Blaner WS, Berglund L, Stenvinkel P: Hand-grip muscle strength, lean body mass, and plasma proteins as markers of nutritional status in patients with chronic renal failure close to start of dialysis therapy. *Am J Kidney Dis* 36:1213-1225, 2000
33. Cupisti A, D'Alessandro C, Morelli E, et al.: Nutritional status and dietary manipulation in predialysis chronic renal failure patients. *J Ren Nutr* 14:127-133, 2004
34. Marckmann P: Nutritional status of patients on hemodialysis and peritoneal dialysis. *Clin Nephrol* 29:75-78, 1988
35. Suliman ME, Qureshi AR, Barany P, et al.: Hyperhomocysteinemia, nutritional status, and cardiovascular disease in hemodialysis patients. *Kidney Int* 57:1727-1735, 2000
36. Qureshi AR, Alvestrand A, Danielsson A, et al.: Factors predicting malnutrition in hemodialysis patients: a cross-sectional study. *Kidney Int* 53:773-782, 1998
37. Aparicio M, Cano N, Chauveau P, et al: Nutritional status of haemodialysis patients: a French national cooperative study. French Study Group for Nutrition in Dialysis. *Nephrol Dial Transplant* 14:1679-1686, 1999
38. Herselman M, Moosa MR, Kotze TJ, Kritzing M, Wuister S, Mostert D: Protein-energy malnutrition as a risk factor for increased morbidity in long-term hemodialysis patients. *J Ren Nutr* 10:7-15, 2000
39. Cianciaruso B, Brunori G, Kopple JD, et al.: Cross-sectional comparison of malnutrition in continuous ambulatory peritoneal dialysis and hemodialysis patients. *Am J Kidney Dis* 26:475-486, 1995
40. Young GA, Kopple JD, Lindholm B, et al.: Nutritional assessment of continuous ambulatory peritoneal dialysis patients: an international study. *Am J Kidney Dis* 17:462-471, 1991
41. Kopple JD: McCollum Award Lecture, 1996: protein-energy malnutrition in maintenance dialysis patients. *Am J Clin Nutr* 65:1544-1557, 1997
42. Mehrotra R, Kopple JD: Nutritional management of maintenance dialysis patients: why aren't we doing better? *Annu Rev Nutr* 21:343-379, 2001
43. Kuhlmann MK, Kribben A, Wittwer M, Horl WH: OPTA--malnutrition in chronic renal failure. *Nephrol Dial Transplant* 22:iii13-iii19, 2007
44. Calle EE, Thun MJ, Petrelli JM, Rodriguez C, Heath CW, Jr.: Body-mass index and mortality in a prospective cohort of U.S. adults. *N Engl J Med* 341:1097-1105, 1999

45. Seidell JC, Verschuren WM, van Leer EM, Kromhout D: Overweight, underweight, and mortality. A prospective study of 48,287 men and women. *Arch Intern Med* 156:958-963, 1996
46. Visscher TL, Seidell JC, Menotti A, et al.: Underweight and overweight in relation to mortality among men aged 40-59 and 50-69 years: the Seven Countries Study. *Am J Epidemiol* 151:660-666, 2000
47. Adams KF, Schatzkin A, Harris TB, et al.: Overweight, obesity, and mortality in a large prospective cohort of persons 50 to 71 years old. *N Engl J Med* 355:763-778, 2006
48. Fleischmann E, Teal N, Dudley J, May W, Bower JD, Salahudeen AK: Influence of excess weight on mortality and hospital stay in 1346 hemodialysis patients. *Kidney Int* 55:1560-1567, 1999
49. Johansen KL, Young B, Kaysen GA, Chertow GM: Association of body size with outcomes among patients beginning dialysis. *Am J Clin Nutr* 80:324-332, 2004
50. Leavey SF, Strawderman RL, Jones CA, Port FK, Held PJ: Simple nutritional indicators as independent predictors of mortality in hemodialysis patients. *Am J Kidney Dis* 31:997-1006, 1998
51. Leavey SF, McCullough K, Hecking E, Goodkin D, Port FK, Young EW: Body mass index and mortality in 'healthier' as compared with 'sicker' haemodialysis patients: results from the Dialysis Outcomes and Practice Patterns Study (DOPPS). *Nephrol Dial Transplant* 16:2386-2394, 2001
52. Glanton CW, Hypolite IO, Hshieh PB, Agodoa LY, Yuan CM, Abbott KC: Factors associated with improved short term survival in obese end stage renal disease patients. *Ann Epidemiol* 13:136-143, 2003
53. Port FK, Ashby VB, Dhingra RK, Roys EC, Wolfe RA: Dialysis dose and body mass index are strongly associated with survival in hemodialysis patients. *J Am Soc Nephrol* 13:1061-1066, 2002
54. Beddhu S, Pappas LM, Ramkumar N, Samore M: Effects of body size and body composition on survival in hemodialysis patients. *J Am Soc Nephrol* 14:2366-2372, 2003
55. Kalantar-Zadeh K, Kopple JD, Kilpatrick RD, et al.: Association of morbid obesity and weight change over time with cardiovascular survival in hemodialysis population. *Am J Kidney Dis* 46:489-500, 2005
56. Kalantar-Zadeh K, Block G, Humphreys MH, Kopple JD: Reverse epidemiology of cardiovascular risk factors in maintenance dialysis patients. *Kidney Int* 63:793-808, 2003
57. Kalantar-Zadeh K, Abbott KC, Salahudeen AK, Kilpatrick RD, Horwich TB: Survival advantages of obesity in dialysis patients. *Am J Clin Nutr* 81:543-554, 2005
58. Kalantar-Zadeh K, Kopple JD: Obesity paradox in patients on maintenance dialysis. *Contrib Nephrol* 151:57-69, 2006
59. Kalantar-Zadeh K: What is so bad about reverse epidemiology anyway? *Semin Dial* 20:593-601, 2007
60. Levin NW, Handelman GJ, Coresh J, Port FK, Kaysen GA: Reverse epidemiology: a confusing, confounding, and inaccurate term. *Semin Dial* 20:586-592, 2007
61. Ikizler TA: Resolved: Being Fat Is Good for Dialysis Patients: The Godzilla Effect. *J Am Soc Nephrol* 19:1059-1062, 2008
62. Kalantar-Zadeh K, Horwich TB, Oreopoulos A, et al.: Risk factor paradox in wasting diseases. *Curr Opin Clin Nutr Metab Care* 10:433-442, 2007
63. Kalantar-Zadeh K, Balakrishnan VS: The kidney disease wasting: inflammation, oxidative stress, and diet-gene interaction. *Hemodial Int* 10:315-325, 2006
64. Rauchhaus M, Coats AJ, Anker SD: The endotoxin-lipoprotein hypothesis. *Lancet* 356:930-933, 2000
65. Sarkar SR, Kuhlmann MK, Kotanko P, et al.: Metabolic consequences of body size and body composition in hemodialysis patients. *Kidney Int* 70:1832-1839, 2006
66. Rao KS: Evolution of kwashiorkor and marasmus. *Lancet* 1:709-711, 1974
67. Garrow JS, James PT (eds): *Human Nutrition and Dietetics*, 1993

68. Bhattacharyya AK: Protein-energy malnutrition (Kwashiorkor-Marasmus syndrome): terminology, classification and evolution. *World Rev Nutr Diet* 47:80-133, 1986
69. Kopple JD: The National Kidney Foundation K/DOQI clinical practice guidelines for dietary protein intake for chronic dialysis patients. *Am J Kidney Dis* 38:68-73, 2001
70. Maroni BJ, Mitch WE: Role of nutrition in prevention of the progression of renal disease. *Annu Rev Nutr* 17:435-455, 1997
71. Fouque D, Laville M, Boissel JP: Low protein diets for chronic kidney disease in non diabetic adults. *Cochrane Database Syst Rev* 19:CD001892, 2006
72. Kopple JD, Berg R, Houser H, Steinman TI, Teschan P: Nutritional status of patients with different levels of chronic renal insufficiency. Modification of Diet in Renal Disease (MDRD) Study Group. *Kidney Int Suppl* 27:S184-S194, 1989
73. Kopple JD, Levey AS, Greene T, et al.: Effect of dietary protein restriction on nutritional status in the Modification of Diet in Renal Disease Study. *Kidney Int* 52:778-791, 1997
74. Ikizler TA, Greene JH, Wingard RL, Parker RA, Hakim RM: Spontaneous dietary protein intake during progression of chronic renal failure. *J Am Soc Nephrol* 6:1386-1391, 1995
75. Carrero JJ, Aguilera A, Stenvinkel P, Gil F, Selgas R, Lindholm B: Appetite disorders in uremia. *J Ren Nutr* 18:107-113, 2008
76. Mitch WE: Malnutrition: a frequent misdiagnosis for hemodialysis patients. *J Clin Invest* 110:437-439, 2002
77. Stenvinkel P, Heimbürger O, Lindholm B: Wasting, but not malnutrition, predicts cardiovascular mortality in end-stage renal disease. *Nephrol Dial Transplant* 19:2181-2183, 2004
78. Ikizler TA, Wingard RL, Sun M, Harvell J, Parker RA, Hakim RM: Increased energy expenditure in hemodialysis patients. *J Am Soc Nephrol* 7:2646-2653, 1996
79. Avesani CM, Draibe SA, Kamimura MA, Colugnati FA, Cuppari L: Resting energy expenditure of chronic kidney disease patients: influence of renal function and subclinical inflammation. *Am J Kidney Dis* 44:1008-1016, 2004
80. Ikizler TA, Pupim LB, Brouillette JR, et al.: Hemodialysis stimulates muscle and whole body protein loss and alters substrate oxidation. *Am J Physiol Endocrinol Metab* 282:E107-E116, 2002
81. Mitch WE: Robert H Herman Memorial Award in Clinical Nutrition Lecture, 1997. Mechanisms causing loss of lean body mass in kidney disease. *Am J Clin Nutr* 67:359-366, 1998
82. Mitch WE: Insights into the abnormalities of chronic renal disease attributed to malnutrition. *J Am Soc Nephrol* 13(Suppl 1):22-27, 2002
83. Graham KA, Reaich D, Channon SM, Downie S, Goodship TH: Correction of acidosis in hemodialysis decreases whole-body protein degradation. *J Am Soc Nephrol* 8:632-637, 1997
84. National Kidney Foundation. K/DOQI Clinical Practice Guidelines for Nutrition in Chronic Renal Failure. *Am J Kidney Dis* 37(suppl 2), S66-S70. 2001
85. Szeto CC, Chow KM: Metabolic acidosis and malnutrition in dialysis patients. *Semin Dial* 17:371-375, 2004
86. Mitch WE, Maroni BJ: Factors causing malnutrition in patients with chronic uremia. *Am J Kidney Dis* 33:176-179, 1999
87. Bammens B, Evenepoel P, Verbeke K, Vanrenterghem Y: Impairment of small intestinal protein assimilation in patients with end-stage renal disease: extending the malnutrition-inflammation-atherosclerosis concept. *Am J Clin Nutr* 80:1536-1543, 2004
88. Marckmann P: Nutritional status and mortality of patients in regular dialysis therapy. *J Intern Med* 226:429-432, 1989
89. Burrowes JD, Cockram DB, Dwyer JT, et al.: Cross-sectional relationship between dietary protein and energy intake, nutritional status, functional status, and comorbidity in older versus younger hemodialysis patients. *J Ren Nutr* 12:87-95, 2002
90. Laws RA, Tapsell LC, Kelly J: Nutritional status and its relationship to quality of life in a sample of chronic hemodialysis patients. *J Ren Nutr* 10:139-147, 2000



91. Dwyer JT, Larive B, Leung J, et al.: Nutritional status affects quality of life in Hemodialysis (HEMO) Study patients at baseline. *J Ren Nutr* 12:213-223, 2002
92. Koo JR, Yoon JW, Kim SG, et al.: Association of depression with malnutrition in chronic hemodialysis patients. *Am J Kidney Dis* 41:1037-1042, 2003
93. Acchiardo SR, Moore LW, Latour PA: Malnutrition as the main factor in morbidity and mortality of hemodialysis patients. *Kidney Int Suppl* 16:199-203, 1983
94. Kopple JD: Effect of nutrition on morbidity and mortality in maintenance dialysis patients. *Am J Kidney Dis* 24:1002-1009, 1994
95. Ikizler TA, Wingard RL, Harvell J, Shyr Y, Hakim RM: Association of morbidity with markers of nutrition and inflammation in chronic hemodialysis patients: a prospective study. *Kidney Int* 55:1945-1951, 1999
96. Stenvinkel P: Malnutrition and chronic inflammation as risk factors for cardiovascular disease in chronic renal failure. *Blood Purif* 19:143-151, 2001
97. Lowrie EG, Lew NL: Death risk in hemodialysis patients: the predictive value of commonly measured variables and an evaluation of death rate differences between facilities. *Am J Kidney Dis* 15:458-482, 1990
98. Owen WF: Nutritional status and survival in end-stage renal disease patients. *Miner Electrolyte Metab* 24:72-81, 1998
99. Qureshi AR, Alvestrand A, Divino-Filho JC, et al.: Inflammation, malnutrition, and cardiac disease as predictors of mortality in hemodialysis patients. *J Am Soc Nephrol* 13(Suppl 1):S28-36, 2002
100. Avram MM, Mittman N, Bonomini L, Chattopadhyay J, Fein P: Markers for survival in dialysis: a seven-year prospective study. *Am J Kidney Dis* 26:209-219, 1995
101. Canada-USA (CANUSA) Peritoneal Dialysis Study Group: Adequacy of dialysis and nutrition in continuous peritoneal dialysis: association with clinical outcomes. *J Am Soc Nephrol* 7:198-207, 1996
102. Leavey SF, Strawderman RL, Jones CA, Port FK, Held PJ: Simple nutritional indicators as independent predictors of mortality in hemodialysis patients. *Am J Kidney Dis* 31:997-1006, 1998
103. Kopple JD, Zhu X, Lew NL, Lowrie EG: Body weight-for-height relationships predict mortality in maintenance hemodialysis patients. *Kidney Int* 56:1136-1148, 1999
104. Avram MM, Sreedhara R, Fein P, Oo KK, Chattopadhyay J, Mittman N: Survival on hemodialysis and peritoneal dialysis over 12 years with emphasis on nutritional parameters. *Am J Kidney Dis* 37:S77-S80, 2001
105. Beddhu S, Pappas LM, Ramkumar N, Samore M: Effects of body size and body composition on survival in hemodialysis patients. *J Am Soc Nephrol* 14:2366-2372, 2003
106. Stenvinkel P, Barany P, Chung SH, Lindholm B, Heimbürger O: A comparative analysis of nutritional parameters as predictors of outcome in male and female ESRD patients. *Nephrol Dial Transplant* 17:1266-1274, 2002
107. Fouque D, Vennegoor M, ter Wee P, et al.: EBPG guideline on nutrition. *Nephrol Dial Transplant* 22(Suppl 2):ii45-87, 2007
108. Bossola M, Muscaritoli M, Tazza L, et al.: Malnutrition in hemodialysis patients: what therapy? *Am J Kidney Dis* 46:371-386, 2005
109. Visser R, Dekker FW, Boeschoten EW, Stevens P, Krediet RT: Reliability of the 7-point subjective global assessment scale in assessing nutritional status of dialysis patients. *Adv Perit Dial* 15:222-225, 1999
110. Detsky AS, McLaughlin JR, Baker JP, et al.: What is subjective global assessment of nutritional status? *J Parenter Enteral Nutr* 11:8-13, 1987
111. McCusker FX, Teehan BP, Thorpe KE, Keshaviah PR, Churchill DN: How much peritoneal dialysis is required for the maintenance of a good nutritional state? Canada-USA (CANUSA) Peritoneal Dialysis Study Group. *Kidney Int* 56:S56-61, 1996
112. Avesani CM, Carrero JJ, Axelsson J, Qureshi AR, Lindholm B, Stenvinkel P: Inflammation and wasting in chronic kidney disease: Partners in crime. *Kidney Int* 70:S8-S13, 2006

113. den Elzen WP, van Manen JG, Boeschoten EW, Krediet RT, Dekker FW: The effect of single and repeatedly high concentrations of C-reactive protein on cardiovascular and non-cardiovascular mortality in patients starting with dialysis. *Nephrol Dial Transplant* 21:1588-1595, 2006
114. Bergstrom J, Lindholm B, Lacson E Jr, et al.: What are the causes and consequences of the chronic inflammatory state in chronic dialysis patients? *Semin Dial* 13:163-175, 2000
115. Kaysen GA: Malnutrition and the acute-phase reaction in dialysis patients-how to measure and how to distinguish. *Nephrol Dial Transplant* 15:1521-1524, 2000
116. Stenvinkel P, Barany P, Heimbürger O, Pecoits-Filho R, Lindholm B: Mortality, malnutrition, and atherosclerosis in ESRD: what is the role of interleukin-6? *Kidney Int* 80:S103-108, 2002
117. Stenvinkel P, Ketteler M, Johnson RJ, et al.: IL-10, IL-6, and TNF-alpha: central factors in the altered cytokine network of uremia--the good, the bad, and the ugly. *Kidney Int* 67:1216-1233, 2005
118. Korevaar JC, van Manen JG, Dekker FW, de Waart DR, Boeschoten EW, Krediet RT: Effect of an increase in C-reactive protein level during a hemodialysis session on mortality. *J Am Soc Nephrol* 15:2916-2922, 2004
119. Kalantar-Zadeh K, Block G, McAllister CJ, Humphreys MH, Kopple JD: Appetite and inflammation, nutrition, anemia, and clinical outcome in hemodialysis patients. *Am J Clin Nutr* 80:299-307, 2004
120. Kaizu Y, Kimura M, Yoneyama T, Miyaji K, Hibi I, Kumagai H: Interleukin-6 may mediate malnutrition in chronic hemodialysis patients. *Am J Kidney Dis* 31:93-100, 1998
121. Kaizu Y, Ohkawa S, Odamaki M, et al.: Association between inflammatory mediators and muscle mass in long-term hemodialysis patients. *Am J Kidney Dis* 42:295-302, 2003
122. Stenvinkel P: Inflammatory and atherosclerotic interactions in the depleted uremic patient. *Blood Purif* 19:53-61, 2001
123. Ross R: Atherosclerosis--an inflammatory disease. *N Engl J Med* 340:115-126, 1999
124. Kalantar-Zadeh K, Kopple JD, Humphreys MH, Block G: Comparing outcome predictability of markers of malnutrition-inflammation complex syndrome in haemodialysis patients. *Nephrol Dial Transplant* 19:1507-1519, 2004
125. Stenvinkel P, Heimbürger O, Lindholm B, Kaysen GA, Bergstrom J: Are there two types of malnutrition in chronic renal failure? Evidence for relationships between malnutrition, inflammation and atherosclerosis (MIA syndrome). *Nephrol Dial Transplant* 15:953-960, 2000
126. Ridker PM, Rifai N, Rose L, Buring JE, Cook NR: Comparison of C-reactive protein and low-density lipoprotein cholesterol levels in the prediction of first cardiovascular events. *N Engl J Med* 347:1557-1565, 2002
127. Kaysen GA: Association between inflammation and malnutrition as risk factors of cardiovascular disease. *Blood Purif* 24:51-55, 2006
128. Kalantar-Zadeh K, Stenvinkel P, Pillon L, Kopple JD: Inflammation and nutrition in renal insufficiency. *Adv Ren Replace Ther* 10:155-169, 2003
129. Stenvinkel P: Malnutrition and chronic inflammation as risk factors for cardiovascular disease in chronic renal failure. *Blood Purif* 19:143-151, 2001
130. Stenvinkel P, Heimbürger O, Lindholm B: Wasting, but not malnutrition, predicts cardiovascular mortality in end-stage renal disease. *Nephrol Dial Transplant* 19:2181-2183, 2004
131. Kalantar-Zadeh K, Kopple JD, Block G, Humphreys MH: A malnutrition-inflammation score is correlated with morbidity and mortality in maintenance hemodialysis patients. *Am J Kidney Dis* 38:1251-1263, 2001
132. Kaysen GA, Rathore V, Shearer GC, Depner TA: Mechanisms of hypoalbuminemia in hemodialysis patients. *Kidney Int* 48:510-516, 1995
133. Kaysen GA: Biological basis of hypoalbuminemia in ESRD. *J Am Soc Nephrol* 9:2368-2376, 1998

134. Korevaar JC, Boeschoten EW, Dekker FW, Krediet RT: What have we learned from NECOSAD? Practical implications for peritoneal dialysis patients. *Perit Dial Int* 27:11-15, 2007
135. Korevaar JC, Jansen MA, Dekker FW, Boeschoten EW, Bossuyt PM, Krediet RT: Evaluation of DOQI guidelines: early start of dialysis treatment is not associated with better health-related quality of life. National Kidney Foundation-Dialysis Outcomes Quality Initiative. *Am J Kidney Dis* 39:108-115, 2002
136. Holmen J, Midthjell K, Krüger Ø, et al.: The Nord-Trøndelag Health Study 1995-97 (HUNT 2): Objectives, contents, methods and participation. *Norsk Epidemiologi* 13:19-32, 2003
137. Mooy JM, Grootenhuys PA, de Vries H, et al.: Prevalence and determinants of glucose intolerance in a Dutch caucasian population. The Hoorn Study. *Diabetes Care* 18:1270-1273, 1995
138. Lukaski HC: Validation of body composition assessment techniques in the dialysis population. *ASAIO J* 43:251-255, 1997
139. Prentice AM, Jebb SA: Beyond body mass index. *Obes Rev* 2:141-147, 2001
140. Sarkar SR, Kuhlmann MK, Khilnani R, et al.: Assessment of body composition in long-term hemodialysis patients: rationale and methodology. *J Ren Nutr* 15:152-158, 2005
141. Kamimura MA, Jose Dos Santos NS, Avesani CM, et al.: Comparison of three methods for the determination of body fat in patients on long-term hemodialysis therapy. *J Am Diet Assoc* 103:195-199, 2003
142. Kamimura MA, Avesani CM, Cendoroglo M, Canziani ME, Draibe SA, Cuppari L: Comparison of skinfold thicknesses and bioelectrical impedance analysis with dual-energy X-ray absorptiometry for the assessment of body fat in patients on long-term haemodialysis therapy. *Nephrol Dial Transplant* 18:101-105, 2003
143. Durnin JV, Womersley J: Body fat assessed from total body density and its estimation from skinfold thickness: measurements on 481 men and women aged from 16 to 72 years. *Br J Nutr* 32:77-97, 1974
144. Heymsfield SB, McManus C, Smith J, Stevens V, Nixon DW: Anthropometric measurement of muscle mass: revised equations for calculating bone-free arm muscle area. *Am J Clin Nutr* 36:680-690, 1982
145. Bossola M, Muscaritoli M, Tazza L, et al.: Variables associated with reduced dietary intake in hemodialysis patients. *J Ren Nutr* 15:244-252, 2005
146. Steiber A, Leon JB, Secker D, et al.: Multicenter study of the validity and reliability of subjective global assessment in the hemodialysis population. *J Ren Nutr* 17:336-342, 2007
147. Yeun JY, Kaysen GA: Factors influencing serum albumin in dialysis patients. *Am J Kidney Dis* 32:S118-S125, 1998
148. Kaysen GA, Stevenson FT, Depner TA: Determinants of albumin concentration in hemodialysis patients. *Am J Kidney Dis* 29:658-668, 1997
149. Axelsson J, Qureshi AR, Divino-Filho JC, et al.: Are insulin-like growth factor and its binding proteins 1 and 3 clinically useful as markers of malnutrition, sarcopenia and inflammation in end-stage renal disease? *Eur J Clin Nutr* 60:718-726, 2006
150. Bergstrom J, Heimburger O, Lindholm B: Calculation of the protein equivalent of total nitrogen appearance from urea appearance. Which formulas should be used? *Perit Dial Int* 18:467-473, 1998