



# African Studies Centre Leiden

# African Postal Heritage

APH Paper 24 Part 1

Ton Dietz

Southern Rhodesia 1924-1937

January 2018

## Introduction

Postage stamps and related objects are miniature communication tools, and they tell a story about cultural and political identities and about artistic forms of identity expressions. They are part of the world's material heritage, and part of history. Ever more of this postal heritage becomes available online, published by stamp collectors' organizations, auction houses, commercial stamp shops, online catalogues, and individual collectors. Virtually collecting postage stamps and postal history has recently become a possibility. These working papers about Africa are examples of what can be done. But they are work-in-progress! Everyone who would like to contribute, by sending corrections, additions, and new area studies can do so by sending an email message to the APH editor: Ton Dietz ([dietzaj@asc.leidenuniv.nl](mailto:dietzaj@asc.leidenuniv.nl)). You are welcome!

Disclaimer: illustrations and some texts are copied from internet sources that are publicly available. All sources have been mentioned. If there are claims about the copy rights of these sources, please send an email to [asc@asc.leidenuniv.nl](mailto:asc@asc.leidenuniv.nl), and, if requested, those illustrations will be removed from the next version of the working paper concerned.

African Studies Centre Leiden  
P.O. Box 9555  
2300 RB Leiden  
The Netherlands

Telephone	+31-71-5273372
E-mail	asc@asc.leidenuniv.nl
Website	<a href="http://www.ascleiden.nl">http://www.ascleiden.nl</a>
Facebook	<a href="http://www.facebook.nl/ascleiden">www.facebook.nl/ascleiden</a>
Twitter	<a href="http://www.twitter.com/ascleiden">www.twitter.com/ascleiden</a>
Countryportal	<a href="http://countryportal.ascleiden.nl">http://countryportal.ascleiden.nl</a>

Illustrations cover page:

ASC Leiden postage stamp Nederland (2011): ©African Studies Centre Leiden

Cape of Good Hope postage stamp 1853:

[http://upload.wikimedia.org/wikipedia/commons/thumb/7/7c/Cape\\_Triangular\\_Postage\\_Stamp.jpg/400px-Cape\\_Triangular\\_Postage\\_Stamp.jpg](http://upload.wikimedia.org/wikipedia/commons/thumb/7/7c/Cape_Triangular_Postage_Stamp.jpg/400px-Cape_Triangular_Postage_Stamp.jpg)

Egypt postage stamp 1914:

[https://upload.wikimedia.org/wikipedia/commons/4/4b/Post\\_Stamp\\_Egypt.jpg](https://upload.wikimedia.org/wikipedia/commons/4/4b/Post_Stamp_Egypt.jpg)

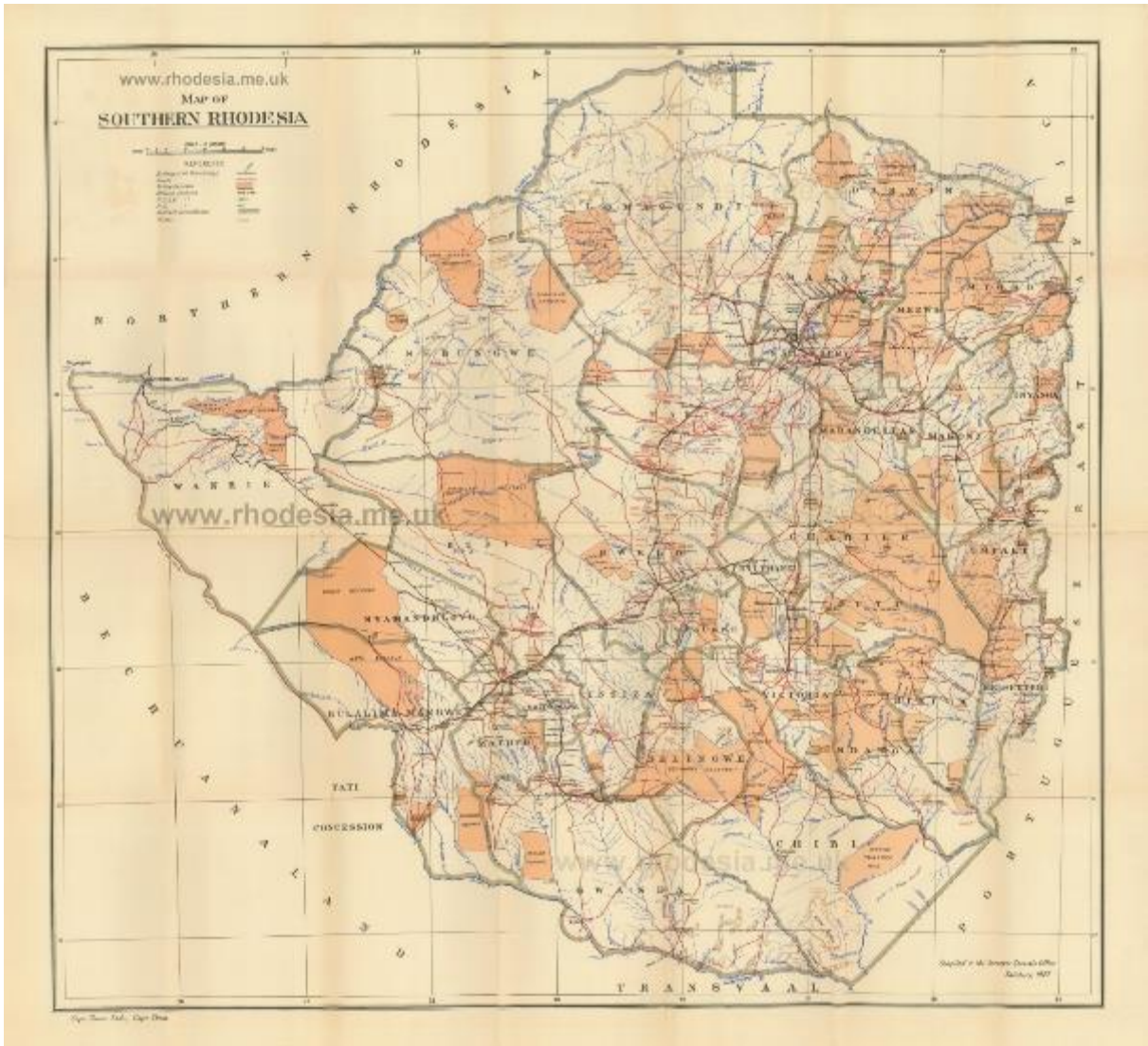
## Table of contents

<b>Part 1:</b>	<b>1</b>
<b>Introduction</b>	<b>4</b>
<b>Postage and Revenue stamps of Southern Rhodesia 1924-1937</b>	<b>5</b>
Part 2:	65
Postage and Revenue stamps of Southern Rhodesia 1937-1953	68
Part 3:	108
Rhodesia and Nyasaland 1953-1964	111
Postage stamps of Southern Rhodesia 1964	134
Postage stamps of Rhodesia, self-rule, 1965	137
Postage stamps of Rhodesia, self-declared Independence, 1965-1979	142
1970 Self-declared Republic	157
Zimbabwe-Rhodesia 1979-1980	170
Zimbabwe 1980 onwards	173
Postmarks on stamps of Southern Rhodesia / Zimbabwe	194
Note on sources	198

## Introduction

On 1. October 1923 the British settlers of the southern part of the area administered by the British South Africa Company got permission from the Crown to self-administer the territory called 'Southern Rhodesia'. Between 1924 and 1953 93 different postage stamps were issued as well as seven postage due stamps. In 1953 the area became part of the Federation of Rhodesia and Nyasaland (51 different postage stamps and 4 postage due stamps), which broke apart in 1964. In 1964 a series of 14 postage stamps were issued using the name of 'Southern Rhodesia', after which the settlers in that area gained autonomy in October 1964, and unilaterally declared the area Independent (on 11.11.1965), under the name of 'Rhodesia', that declared itself an independent Republic on 2 March 1970 (in total this era had 226 different postage stamps and 15 different postage due stamps). In 1970 the currency changed from pennies, shillings and pounds to (Rhodesian) collars and cents. After a fierce struggle for real Independence the settlers were defeated and a new Republic of Zimbabwe started on 18.4.1980 (after an interim phase between 1.6.1979 and 31-3.1980 when the country was called 'Rhodesia-Zimbabwe').

For reference we use the Michel Catalogue: Michel Katalog Süd- und Zentralafrika 2007, pp. 1100-1103 for 'Süd-Rhodesien', pp 697-698 for 'Rhodesien und Nyassaland', pp 687-696 for 'Rhodesien', and 873-897 for 'Simbabwe'. For railway stamps used in Rhodesia and in Zimbabwe see APH 26.



[http://www.rhodesia.me.uk/images/SouthernRhodesia19271-1000000\\_final5\\_000.jpg](http://www.rhodesia.me.uk/images/SouthernRhodesia19271-1000000_final5_000.jpg)

### Postage and Revenue Stamps of Southern Rhodesia 1924-1953

1924 (1/4) King George V ('Admirals'), 14 postage stamps. (Mi 1-14)



<http://www.rhodesia.co.za/Images/large/SR1.jpg>: "1/4d and 2d x 2, each in un-issued colour brown, black and blue and black and carmine. Overprinted at top 'WATERLOW & SONS /

LIMITED / SPECIMEN' with small security puncture perf. 12½ on ungummed paper as released. SG 1, 4 x 2 specimens / printer's sample".

<http://www.rhodesia.co.za/Images/large/SRR2.jpg>: "½d, in un-issued colour brown. Overprinted at top 'WATERLOW & SONS / LIMITED / SPECIMEN' in deep blue (Samuel type WS6), IMPERFORATE and without security puncture. Very fine with large margins, on ungummed paper as released. Extremely RARE with a handful known. SG 4 specimen / printer's sample".

<http://www.rhodesia.co.za/Images/large/SRR3.jpg>: "2d, in un-issued colour black and carmine. Overprinted at top 'WATERLOW & SONS / LIMITED / SPECIMEN' in deep blue (Samuel type WS6), IMPERFORATE and without security puncture. Very fine with large margins, on ungummed paper as released. Extremely RARE with a handful known. SG 4 specimen / printer's sample".



<http://www.rhodesia.co.za/Images/large/RA3029.jpg>: "The complete set of 14 values, with additional shades comprising: 1/2d x 2, 1d x 3, 1d p.12 1/2 coil, 1 1/2d x 2, 2d x 2, 3d x 3, 4d x 2, 6d x 5, 8d x 3, 10d x 2, 1/- x 5, 1/6 x 3, 2/- x 3, 2/6 x 4 and 5/- x 3. Very fine mint. An attractive and useful assembly. SG 1-14 plus shades. Note: this group comprises the complete range of shades / printings recorded and listed by ourselves in the table section above, and clearly illustrates the numerous shades encountered in this issue."



<http://www.rhodesia.co.za/Images/large/SR642.jpg>: "1929 16th July, cover bearing KGV ½d to 2/- Admirals (SG 1-12), cancelled 'VICTORIA FALLS' addressed to South Africa. Reverse flap lacking and minor faults. Attractive and uncommon."



<http://www.rhodesia.co.za/Images/large/RA9404.jpg>: "½d, vertical block of four across the horizontal interpanneau margin, full imprint, upper pair imperforate to margin at base. very fine mint. SG 1 vars."

<http://www.rhodesia.co.za/Images/large/RA7769.jpg>: "½d, imperforate to upper horizontal interpanneau margin. Fine used cancelled part '(SHA)MVA 1929' datestamp. Few

unobtrusive creases. Uncommon. SG 1". See:

<http://www.rhodesianstudycircle.org.uk/abercorn/>: "The village of Abercorn was established in 1895 when gold was discovered in the area. During the First Chimurenga, many of the settlers of Abercorn died in an attack on the village. Its name was later changed to Shamva to avoid confusion with Abercorn in Northern Rhodesia."

<http://www.rhodesia.co.za/Images/large/RA1424.jpg>: "½d, vertical pair across the horizontal interpanneau, lower stamp imperforate to margin. Very fine used cancelled with 'MARANDELLAS SEPT 1930' datestamps . Very fine and scarce. SG 1 var."

<http://www.rhodesia.co.za/Images/large/RA9405.jpg>: "½d, vertical pair across the horizontal interpanneau, upper stamp imperforate to margin. Very fine used on piece cancelled with 'SALISBURY 2 DEC 1926' datestamps . Very fine and scarce. SG 1 var."



<https://i.ebayimg.com/thumbs/images/g/41kAAOSwdzVXnSOa/s-l225.jpg>: "South Rhodesia 1924 Admiral 1/2d with LYDIATE postmark".

[http://www.rhodesianstamps.net/Southern\\_Rhodesia/Postmarks/On\\_Admirals/SR\\_316\\_CHI\\_BI.jpg](http://www.rhodesianstamps.net/Southern_Rhodesia/Postmarks/On_Admirals/SR_316_CHI_BI.jpg): "SR 316. CHIBI . 4 FEB 1926 Type 13".



<http://www.rhodesia.co.za/Images/large/RA7771.jpg>: "1d, IMPERFORATE TO UPPER MARGIN. Minor tone at top of margin, fine mint. Scarce. SG 2 var."

<http://www.rhodesia.co.za/Images/large/SR13.jpg>: "1d, imperforate to lower interpanneau margin. Very fine mint. SG 2 var."

<http://www.rhodesia.co.za/Images/large/SR43.jpg>: "1d, horizontal pair across the vertical interpanneau margin, major variety BOTH STAMPS IMPERFORATE TO MARGIN. Very fine mint. Very scarce, 12 such pairs possible with a few of those used. SG 2 shade var."



<http://www.postmarks.co.za/images/Bembesi%20%201925.jpg>: "BEMBESI. 12.10.1906 to 10.11.1965. Postal agency under Bulawayo". See:

<http://www.rhodesianstudycircle.org.uk/bembesi/>: "Bembesi, Bubi District. Bembesi was the site of the most decisive battle of the Matabele War. On 1st November, 1893, a battle was fought between the Matabele Warriors (Ndebele), under the leadership of Lobengula, and the British forces, under the command of Major Patrick Forbes. Lobengula fled after the defeat at Bembesi but not before deciding to burn his capital Bulawayo to the ground rather than allow it to be captured by the British. Post Office History. 1905.10.12 – Opened as a post and telegraph office under Bulawayo. 1910.05.04 – Downgraded to postal agency."

<http://www.postmarks.co.za/images/Chatsworth%204.jpg>: "CHATSWORTH. 22.09.1919 to 10.11.1965. Gutu District. Renamed from Makowries". See:

<http://www.rhodesianstudycircle.org.uk/chatsworth/>: "Chatsworth, Gutu District. Chatsworth settlement started in 1911 as a railway station. The village was first called Makori, then Makowries. In 1919 it was renamed Chatsworth mainly due to European developers. Post Office History. 1919.09.22 – Renamed Chatsworth from Makowries. 1948.00.00 – Changed to postal agency under Fort Victoria. 1961.08.04 – Upgraded to a money and telegraph office. 1962.00.00 – New post office building opened."



[http://www.rhodesianstamps.net/Southern\\_Rhodesia/Postmarks/On\\_Admirals/SR\\_339\\_INYANGA.jpg](http://www.rhodesianstamps.net/Southern_Rhodesia/Postmarks/On_Admirals/SR_339_INYANGA.jpg): "SR 339. INYANGA. 7 APR 1926 Type 13x".

[http://www.rhodesianstamps.net/Southern\\_Rhodesia/Postmarks/On\\_Admirals/SR\\_341\\_INYAZURA.jpg](http://www.rhodesianstamps.net/Southern_Rhodesia/Postmarks/On_Admirals/SR_341_INYAZURA.jpg): "SR 341. INYAZURA. 5-APL-27. Spelling for April "



[http://www.rhodesianstamps.net/Southern\\_Rhodesia/Postmarks/On\\_Admirals/SR\\_342\\_IRON\\_HILL\\_MINE.jpg](http://www.rhodesianstamps.net/Southern_Rhodesia/Postmarks/On_Admirals/SR_342_IRON_HILL_MINE.jpg): "SR 342. IRON MINE HILL. 17 MAY 26 Type 13s".



<http://www.rhodesia.co.za/Images/large/MBSA8.jpg>: "CONCESSION RAIL dc, virtually complete bold strike dated 26 NOV 27, on pair 1d KGV Admiral.".

<http://www.rhodesia.co.za/Images/large/RA1126.jpg>: "(D)AISYFIELD dc, good part strike dated 8 AUG 27 on 1d KGV Admiral.".

<http://www.rhodesia.co.za/Images/large/RA8602.jpg>: "GREYSTONE dc, almost complete strike dated 17 JUL 29, on KGV 1d Admiral on piece. Scarce.". See:

<http://www.rhodesianstudycircle.org.uk/greystone/>: "Greystone, Insiza District. Post Office History. 1924.11.24 – Opened as postal agency under Shangani. Service: 1924.11.24 – Postal service by runner to Shangani.".



<http://www.rhodesia.co.za/Images/large/RA9245.jpg>: "MAKWIRO dc, three part or complete strikes dated 11 OCT 1928, on block of six KGV 1d Admirals"

<http://www.postmarks.co.za/images/Antelope%20Mine%201929.jpg>: "ANTELOPE MINE. Open: 15.04.1910 to 10.11.1965. Postal Agency in the Matobo District, upgraded to a money order office (1944)". See: <http://www.rhodesianstudycircle.org.uk/antelope-mine/>: "Antelope Mine. Matobo District. Antelope Mine was established on the site of ancient African workings, in an area once rich in wildlife. The original claim was registered in 1893 but did not start operating until 1913 (eventually closing in 1919). During the Zimbabwean government's Gukurahundi campaign against the Ndebele population of southern Zimbabwe in the 1980s, the disused mine workings at Antelope Mine were the site of a concentration camp run by the Fifth Brigade of the Zimbabwean Army. Many prisoners were reported to have been killed and their bodies thrown down the mine shaft. On two instances in 1996 and 1999, skeletal remains believed to be of executed ZAPU prisoners were discovered in the abandoned mineshaft. Post Office History 1910.05.04 – Opened as Postal Agency; 1941.07.31 – Postal Agent assistance commits suicide. Inspection revealed theft from Registered mail. 1944.04.01 – Upgraded to a Money and Telegraph Office. 1946.00.00 – Upgraded to Post Office.".



<http://www.postmarks.co.za/images/Chakari%206%201929.jpg>: “CHAKARI. 10.12.1923 to 10.11.1965. Originally called Turkois Mine and later Shagari”. See:

<http://www.rhodesianstudycircle.org.uk/chakari/>: “Chakari. Chakari was first known, in 1907, as Turkois Mine, but the name was changed in 1911 to Shagari. Owing to the difficulty some Europeans have in pronouncing the African language, it became obvious that the name should have been Chakari, and not Shagari. It was accordingly decided to alter it once more and on 1st July, 1923, it officially became known as Chakari. Post Office History . 1923.07.01 – Name changed from Shagari to Chakari. 1946.00.00 – New building opened for the postal agency. 1951.06.01 – Upgraded to a money and telegraph office.”

<http://www.rhodesianstudycircle.org.uk/wordpress/wp-content/uploads/2017/08/Chakari-PO-300x219.jpg>



<http://www.postmarks.co.za/images/Chilimanzi%201927.jpg>: “CHILIMANZI. 15.06.1925 to 22.04.1933. Situated in the Chilimanzi District”.

<http://www.postmarks.co.za/images/Gokwe%20194....jpg>: “GOKWE. 28.03.1928 to 10.11.1965. Postal Agency under Que Que. PO from 01.08.1965”.

[http://www.rhodesianstamps.net/Southern\\_Rhodesia/Postmarks/On\\_Admirals/SR\\_306\\_BATTLEFIELDS.jpg](http://www.rhodesianstamps.net/Southern_Rhodesia/Postmarks/On_Admirals/SR_306_BATTLEFIELDS.jpg): “SR 306. BATTLEFIELDS. 22 AUG 27 Type 12.2”.

[http://www.rhodesianstamps.net/Southern\\_Rhodesia/Postmarks/On\\_Admirals/SR\\_325\\_FELIXBURG.jpg](http://www.rhodesianstamps.net/Southern_Rhodesia/Postmarks/On_Admirals/SR_325_FELIXBURG.jpg): "SR 325. FELIXBURG. 23 JUN 1927 Type 13x".



[http://www.rhodesianstamps.net/Southern\\_Rhodesia/Postmarks/On\\_Admirals/SR\\_330\\_GOLDEN\\_VALLEY.jpg](http://www.rhodesianstamps.net/Southern_Rhodesia/Postmarks/On_Admirals/SR_330_GOLDEN_VALLEY.jpg): "SR 330. GOLDEN VALLEY. 11 JUN 1927 Type 13x".

<http://www.postmarks.co.za/images/Inyati%201930.jpg>: "INYATI. 01.04.1895 to 30.09.1897; 31.03.1904 to 28.02.1934. Postal agency under Bulawayo".

<http://www.postmarks.co.za/images/Johannesrust%20%201927.jpg>: "JOHANNESRUST. 16.11.1926 to 31.08.1929. Postal agency under Melsetter. Renamed to Tandaai".

<http://www.postmarks.co.za/images/Lancaster%201930.jpg>: "LANCASTER. 01.05.1924 to 10.11.1965. Postal agency under Shangani".



<http://www.postmarks.co.za/images/Chilimanzi%201927.jpg>. Cancelled CHILIMANZI

[http://www.rhodesianstamps.net/Southern\\_Rhodesia/Postmarks/On\\_Admirals/SR\\_352\\_NORTON.jpg](http://www.rhodesianstamps.net/Southern_Rhodesia/Postmarks/On_Admirals/SR_352_NORTON.jpg) Cancelled NORTON.



[http://www.rhodesianstamps.net/Southern\\_Rhodesia/Postmarks/On Admirals/SR 349 MIAMI.jpg](http://www.rhodesianstamps.net/Southern_Rhodesia/Postmarks/On_Admirals/SR_349_MIAMI.jpg): "SR 349. MIAMI 24 JAN 1929. Type 13x".

[http://www.rhodesianstamps.net/Southern\\_Rhodesia/Postmarks/On Admirals/SR 323 DUCHESS HILL.jpg](http://www.rhodesianstamps.net/Southern_Rhodesia/Postmarks/On_Admirals/SR_323_DUCHESS_HILL.jpg): "DUCHESS HILL 1 SEP 1930 Type 13".

[http://www.rhodesianstamps.net/Southern\\_Rhodesia/Postmarks/On Admirals/SR 365 SAWMILLS.jpg](http://www.rhodesianstamps.net/Southern_Rhodesia/Postmarks/On_Admirals/SR_365_SAWMILLS.jpg): "SR 365. SAWMILLS. 12 MAR 19? Type 13A".

[http://www.rhodesianstamps.net/Southern\\_Rhodesia/Postmarks/On Admirals/SR 305 BALLA BALLA.jpg](http://www.rhodesianstamps.net/Southern_Rhodesia/Postmarks/On_Admirals/SR_305_BALLA_BALLA.jpg): "SR 305. BALLA BALLA. 13 MAY 1927 Type 13.1".



[http://www.rhodesianstamps.net/Southern\\_Rhodesia/Postmarks/On Admirals/SR 336 HUNTERS ROAD.jpg](http://www.rhodesianstamps.net/Southern_Rhodesia/Postmarks/On_Admirals/SR_336_HUNTERS_ROAD.jpg): "SR 336. HUNTERS ROAD. 29 NOV 1926 Type 13".

[http://www.rhodesianstamps.net/Southern\\_Rhodesia/Postmarks/On Admirals/SR 348 MATOPOS.jpg](http://www.rhodesianstamps.net/Southern_Rhodesia/Postmarks/On_Admirals/SR_348_MATOPOS.jpg): "SR 348. MATOPOS. 27 JUN 27 Type 12x".

[http://www.rhodesianstamps.net/Southern\\_Rhodesia/Postmarks/On Admirals/SR 350 MSONNEDDI.jpg](http://www.rhodesianstamps.net/Southern_Rhodesia/Postmarks/On_Admirals/SR_350_MSONNEDDI.jpg): "SR 350. MSONNEDDI. NOV 1927 Type 13A".

[http://www.rhodesianstamps.net/Southern\\_Rhodesia/Postmarks/On\\_Admirals/SR\\_351\\_NGAMO.jpg](http://www.rhodesianstamps.net/Southern_Rhodesia/Postmarks/On_Admirals/SR_351_NGAMO.jpg): "SR 351. NGAMO. Type 13s Very Rare. Part Strike".



[http://www.rhodesianstamps.net/Southern\\_Rhodesia/Postmarks/On\\_Admirals/SR\\_353\\_NUANETSI.jpg](http://www.rhodesianstamps.net/Southern_Rhodesia/Postmarks/On_Admirals/SR_353_NUANETSI.jpg): "SR 353.NUANETSI . 27 MAY 1930. E.R.D. - Type 13".

[http://www.rhodesianstamps.net/Southern\\_Rhodesia/Postmarks/On\\_Admirals/SR\\_358\\_PAULINGTON.jpg](http://www.rhodesianstamps.net/Southern_Rhodesia/Postmarks/On_Admirals/SR_358_PAULINGTON.jpg): "SR 358. PAULINGTON. 27 OCT 1925 Type 13".

[http://www.rhodesianstamps.net/Southern\\_Rhodesia/Postmarks/On\\_Admirals/SR\\_370\\_TURK\\_MINE.jpg](http://www.rhodesianstamps.net/Southern_Rhodesia/Postmarks/On_Admirals/SR_370_TURK_MINE.jpg): "SR 370. TURK MINE. 26 JAN 1928 Type 13x".



[http://www.rhodesianstamps.net/Southern\\_Rhodesia/Postmarks/On\\_Admirals/SR\\_375\\_WANKIES.jpg](http://www.rhodesianstamps.net/Southern_Rhodesia/Postmarks/On_Admirals/SR_375_WANKIES.jpg): "SR 375. WANKIES. 3 JAN 1926 Type 13x".

[http://www.rhodesianstamps.net/Southern\\_Rhodesia/Postmarks/On\\_Admirals/SR\\_377\\_WILLOUGHBY'S\\_HALT.jpg](http://www.rhodesianstamps.net/Southern_Rhodesia/Postmarks/On_Admirals/SR_377_WILLOUGHBY'S_HALT.jpg): "SR 377. WILLOUGHBY'S HALT. 29 JAN 1929 Type 13x".



[http://www.rhodesianstamps.net/Southern\\_Rhodesia/Postmarks/On\\_Admirals/SR\\_379\\_ZALOBA.jpg](http://www.rhodesianstamps.net/Southern_Rhodesia/Postmarks/On_Admirals/SR_379_ZALOBA.jpg): "SR 379. ZALOBA. 14 MAY 1928 Type 13".

[http://www.rhodesianstamps.net/Southern\\_Rhodesia/Postmarks/On\\_Admirals/SR\\_385\\_DIAMOND\\_A.jpg](http://www.rhodesianstamps.net/Southern_Rhodesia/Postmarks/On_Admirals/SR_385_DIAMOND_A.jpg): "SR 385. DIAMOND A on 1d".

[http://www.rhodesianstamps.net/Southern\\_Rhodesia/Postmarks/On\\_Admirals/SR\\_387\\_BONC\\_827.jpg](http://www.rhodesianstamps.net/Southern_Rhodesia/Postmarks/On_Admirals/SR_387_BONC_827.jpg): "SR 387. BONC 827".

[http://www.rhodesianstamps.net/Southern\\_Rhodesia/Postmarks/On\\_Admirals/SR\\_388\\_BONC\\_941.jpg](http://www.rhodesianstamps.net/Southern_Rhodesia/Postmarks/On_Admirals/SR_388_BONC_941.jpg): "SR 388. BONC 941 on 1d".



<http://www.rhodesia.co.za/Images/large/SR764.jpg>: "1½d, upper marginal imperforate to interpanneau margin. Unused without gum, scarce. SG 3 var.".

<http://www.rhodesia.co.za/Images/large/SR478.jpg>: "1½d, upper marginal imperforate to interpanneau margin. Fine mint, scarce. SG 3 var."



<http://www.rhodesia.co.za/Images/large/SR428.jpg>: "MATETSI dc, large part strike dated 23 JUL 1927, on KGV 1½d Admiral."

<http://www.postmarks.co.za/images/Buhera%201923.jpg> : "BUHERA. 30.12.1916 to 22.12.1948. 01.07.1965 to 10.11.1965. Situated in the Charter District".

<http://www.postmarks.co.za/images/Christmas%20Pass%201926.jpg>: "CHRISTMAS PASS. 11.02.1924 to 10.02.1934. Postal agency under Umtali".

<http://www.postmarks.co.za/images/Figtree%203.jpg>: "FIGTREE. 15.07.1894 to 10.11.1965. Post office in the Bulalima District".

[http://www.rhodesianstamps.net/Southern\\_Rhodesia/Postmarks/On\\_Admirals/SR\\_301\\_ARCTURUS\\_PO.jpg](http://www.rhodesianstamps.net/Southern_Rhodesia/Postmarks/On_Admirals/SR_301_ARCTURUS_PO.jpg): "SR 301. ARCTURUS P.O. 3 JUL 1924 Type 13".



<http://www.postmarks.co.za/images/Fort%20Rixon%202.jpg>: "FORT RIXON. 31.03.1902 to 29.03.1945; 01.01.1950 to 01.09.1965. Postal agency under Bulawayo". See:

<http://www.rhodesianstudycircle.org.uk/fort-rixon/>: "Fort Rixon, Insiza District. Fort Rixon was founded as a British military post in 1896 during the Ndebele uprisings near the site of the Dhlo-Dhlo ruins. Prominent in local tradition, the Dhlo-Dhlo ruins appear to be of 17th- or 18th-century origin, yielding Portuguese, Arab, and Jesuit relics. It is believed that Dhlo-Dhlo was a seat of the supreme chief of the Rozwi people before the arrival of the Ndebele. It is now an agricultural (corn [maize] and tobacco) and ranching centre and the focus of gold-mining activities in the area. Post Office History. 1902.03.31 – Opened as a postal agency under Bulawayo. 1903.08.14 – Upgraded to a Post Office. 1910.05.04 – Downgraded to postal agency. Service 1902.03.31 – Mail service by runner to Insiza. 1910.05.01 – Mail service by by coach or mail cart to Insiza. 1926.04.01 – Mail service by motor car (up to thrice weekly). 1929.00.00 – Mail service by car reduced to twice weekly."



[http://www.rhodesianstamps.net/Southern\\_Rhodesia/Postmarks/On\\_Admirals/SR\\_332\\_GUTU.jpg](http://www.rhodesianstamps.net/Southern_Rhodesia/Postmarks/On_Admirals/SR_332_GUTU.jpg):  
"SR 332. GUTU. Type 13x".

<http://www.postmarks.co.za/images/Heany%201925.jpg>: "HEANY (JUNCTION). 02.01.1904  
to 10.11.1965. Renamed from Gwanada Junction".

[http://www.rhodesianstamps.net/Southern\\_Rhodesia/Postmarks/On\\_Admirals/SR\\_376\\_WEST\\_NICHOLSON.jpg](http://www.rhodesianstamps.net/Southern_Rhodesia/Postmarks/On_Admirals/SR_376_WEST_NICHOLSON.jpg): "WEST NICHOLSON 4 FEB 1926 Type 13x

[http://www.rhodesianstamps.net/Southern\\_Rhodesia/Postmarks/On\\_Admirals/SR\\_318\\_CHIRESA.jpg](http://www.rhodesianstamps.net/Southern_Rhodesia/Postmarks/On_Admirals/SR_318_CHIRESA.jpg): "SR 318. CHIRESA. 12 DEC 1924 Type 13".



[http://www.rhodesianstamps.net/Southern\\_Rhodesia/Postmarks/On\\_Admirals/SR\\_355\\_NYSON.jpg](http://www.rhodesianstamps.net/Southern_Rhodesia/Postmarks/On_Admirals/SR_355_NYSON.jpg): "SR 355. NYSON. 13 JULY-24 Type 13S".

[http://www.rhodesianstamps.net/Southern\\_Rhodesia/Postmarks/On\\_Admirals/SR\\_359\\_PFNHALONGA.jpg](http://www.rhodesianstamps.net/Southern_Rhodesia/Postmarks/On_Admirals/SR_359_PFNHALONGA.jpg): "SR 359. PFNHALONGA. 11 FEB 1926 Type 13.1".

[http://www.rhodesianstamps.net/Southern\\_Rhodesia/Postmarks/On\\_Admirals/SR\\_367\\_SYRINGA.jpg](http://www.rhodesianstamps.net/Southern_Rhodesia/Postmarks/On_Admirals/SR_367_SYRINGA.jpg): "SR 367. SYRINGA. Type 13".



[http://www.rhodesianstamps.net/Southern\\_Rhodesia/Postmarks/On\\_Admirals/SR\\_331\\_GREAT\\_ZIMBABWE.jpg](http://www.rhodesianstamps.net/Southern_Rhodesia/Postmarks/On_Admirals/SR_331_GREAT_ZIMBABWE.jpg): "SR 331. GREAT ZIMBABWE. Type 13x".



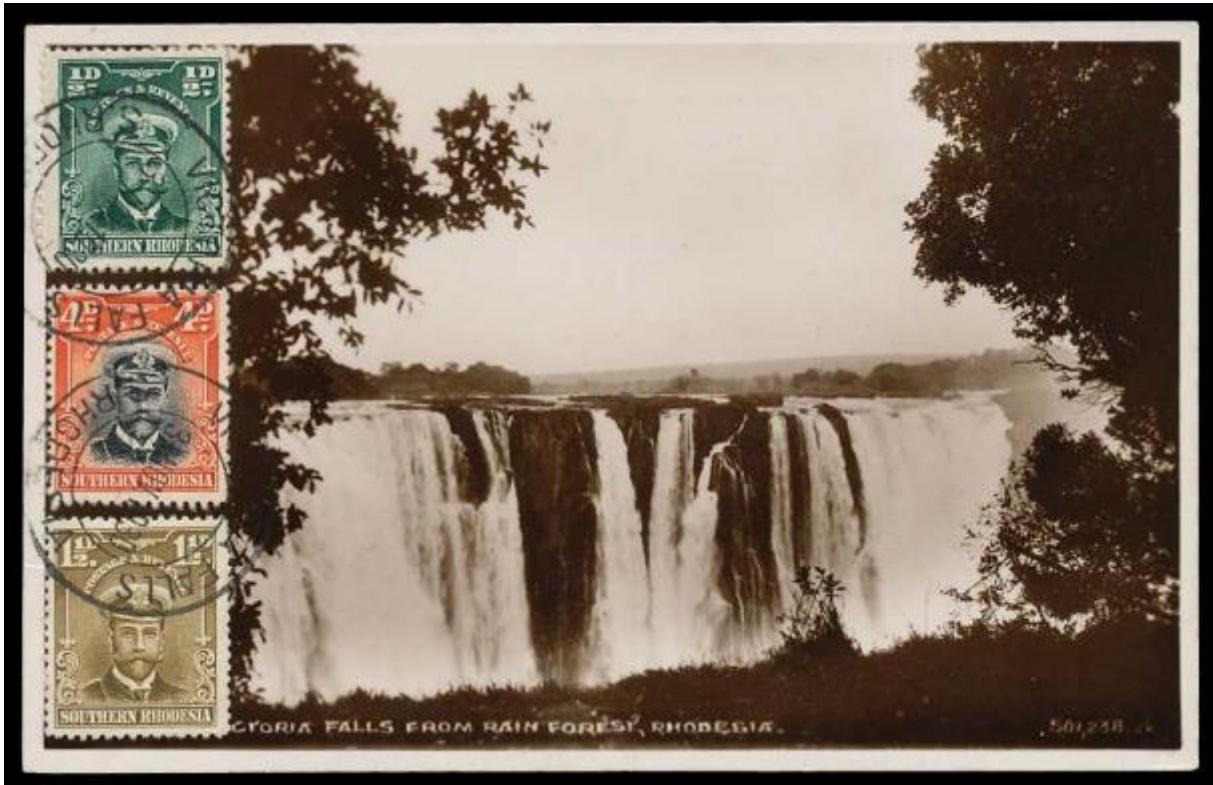
<http://www.rhodesia.co.za/Images/large/RA7779.jpg>: "2/-, horizontal pair superb used cancelled 'SHABANI 7 MAY 25'. SG 12".

[http://i.ebayimg.com/00/s/NjkwWDExMjg=/z/Q5gAAOSwJH1ZNR7O/\\$\\_57.JPG](http://i.ebayimg.com/00/s/NjkwWDExMjg=/z/Q5gAAOSwJH1ZNR7O/$_57.JPG). Cancelled SELUKWE.



<http://www.rhodesianstudycircle.org.uk/wordpress/wp-content/uploads/2017/08/Nil-Desperandum.D2.jpg>: "Nil Desperandum Mine, Shabani District. Residential township eight miles from Bulawayo. Post Office History. 1930.02.17 – Opened as postal agency under Shabani (later Gwelo). Service: 1939.00.00 – Mail service by cyclist from Shabani.".

[http://www.rhodesianstamps.net/Southern\\_Rhodesia/Postmarks/On\\_Admirals/SR\\_354\\_NY\\_ABIRA.jpg](http://www.rhodesianstamps.net/Southern_Rhodesia/Postmarks/On_Admirals/SR_354_NY_ABIRA.jpg): "SR 354. NYABIRA. Type 13sw".



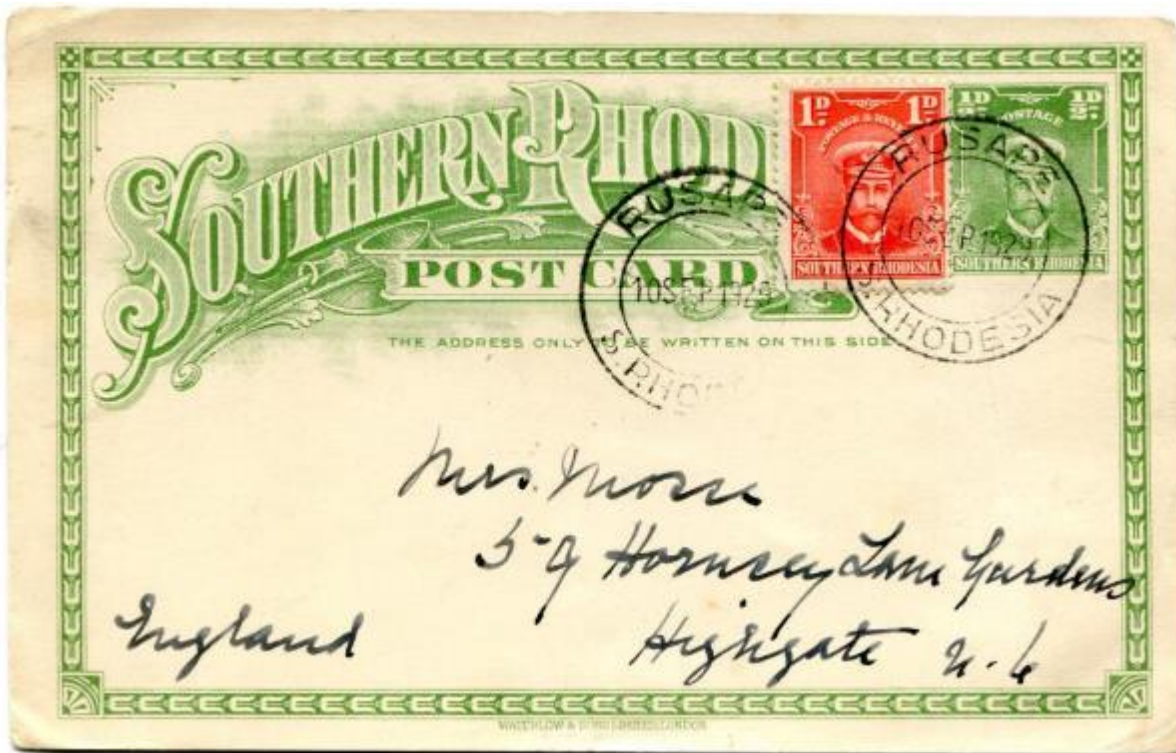
<http://www.rhodesia.co.za/Images/large/SR653.jpg>: "1930 3rd November, sepia Post Card of 'Victoria Falls from Rain Forest', bearing on picture side KGV ½d, 1½d and 4d Admirals (SG 1, 3, 6), crisply cancelled 'VICTORIA FALLS', locally addressed. Delightful.".



<http://www.postmarks.co.za/images/Bulawayo%20N%201928.jpg>: "Bulawayo N".



<http://www.postmarks.co.za/images/Bromley%20S.%20Rhodesia%20cover.jpg>: "BROMLEY. 30.10.1897 to October 1898. 11.05.1899 to 23.02.1901. 12.02.1923 to 10.11.1965. Situated in the Goromonzi District".



<http://www.chrisrailey.com/images/3285.jpg>

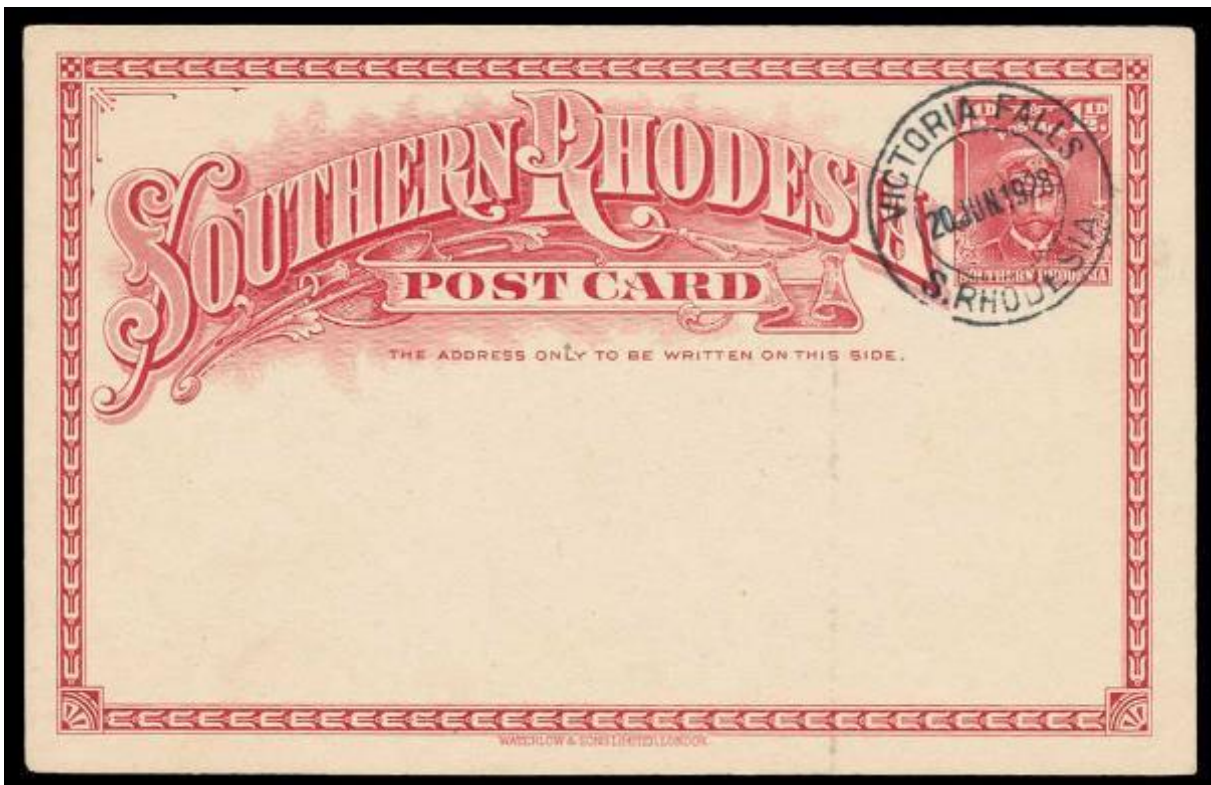


[http://www.rhodesia.co.za/images/thumbnails/SR287\\_tn.jpg](http://www.rhodesia.co.za/images/thumbnails/SR287_tn.jpg): "1924 KGV 1/2d Admiral envelope, small size (136 x 80 mm). Very fine unused. H&G B1".

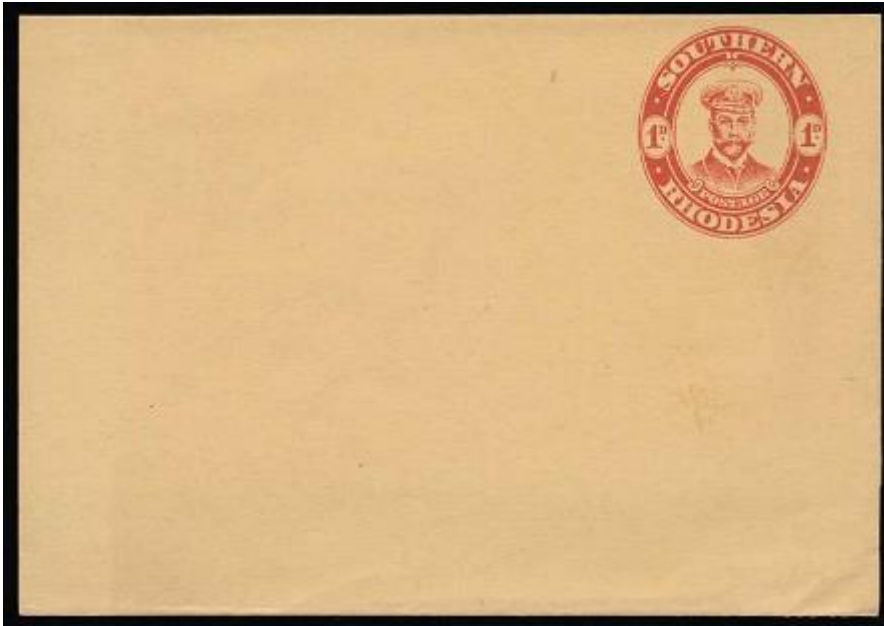


<http://www.rhodesia.co.za/Images/large/SR643.jpg>: "1924 KGV ½d Admiral wrapper. Cancelled by favour 'VICTORIA FALLS 20 JUN 1928'. H&G E2".

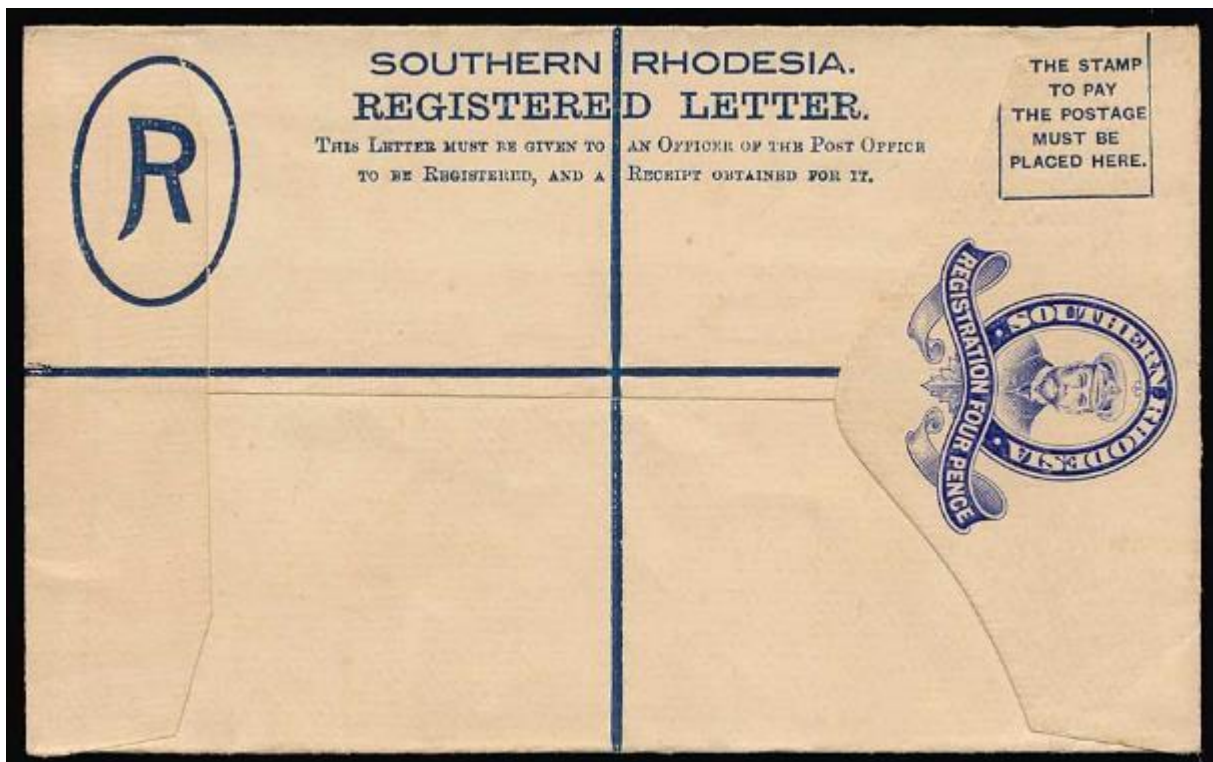
<http://www.postmarks.co.za/images/Headlands%20%20cover.jpg>: "HEADLANDS. 30.09.1898 to 10.11.1965. Postal agency under Salisbury".



<http://www.rhodesia.co.za/Images/large/SR646.jpg> : "1924 KGV 1½d Admiral Post Card. Cancelled by favour 'VICTORIA FALLS 20 JUN 1928'. H&G 2".



<http://www.rhodesia.co.za/Images/large/SR307.jpg>: "1924 KGV 1d Admiral wrapper. Very fine unused. H&G E2 "



<http://www.rhodesia.co.za/Images/large/SR293.jpg>: "1924 KGV 4d Admiral Registered envelope, small size G (152 x 92mm). Very fine unused. H&G C1".

1924 Revenue stamps



[http://www.rhodesia.co.za/Images/featured/AR200\\_f.jpg](http://www.rhodesia.co.za/Images/featured/AR200_f.jpg): “1924 KGV Admirals 3/- to £50, the complete set of die proofs of the frames for all eight duties. Struck in black on wove paper, and each with die numbers in manuscript above, and further endorsed 'Cancelled' in red ink and dated '19 / 1 / 40'. From the Waterlow archive day book with usual resultant faults. A UNIQUE group. Note: Waterlow’s prepared two sets of die proofs. The so-called ‘clean’ set were placed in the proofs book and were kept in optimum conditions whereas the ‘dirty’ set were retained in the printshop and due to the less than ideal conditions there, are often affected by various stains and faults in addition to receiving various ink endorsements and instructions relating to the stamp production process”.

#### 1924 Revenue



[http://www.rhodesianstamps.net/Southern\\_Rhodesia/Revenues/SR%20370.jpg](http://www.rhodesianstamps.net/Southern_Rhodesia/Revenues/SR%20370.jpg): “SR 160. 1924 3/- ; Few pulled perforations”.

[http://www.rhodesianstamps.net/Southern\\_Rhodesia/Revenues/SR%20373.jpg](http://www.rhodesianstamps.net/Southern_Rhodesia/Revenues/SR%20373.jpg): “SR 163. 3/- Red Brown & cobalt”.

[http://www.rhodesianstamps.net/Southern\\_Rhodesia/Revenues/SR%20374.jpg](http://www.rhodesianstamps.net/Southern_Rhodesia/Revenues/SR%20374.jpg): “SR 164. 3/- Chestnut & pale blue”.

[http://www.rhodesianstamps.net/Southern\\_Rhodesia/Revenues/SR%20378.jpg](http://www.rhodesianstamps.net/Southern_Rhodesia/Revenues/SR%20378.jpg): "SR 168. £1  
Black & deep magenta".



<http://www.rhodesia.co.za/Images/large/SRR25.jpg>: "1924 KGV Admiral 7/6, in combination  
with pair 6d regular issues, on piece pen and violet cancel. Mewett 215, SG 7".



<http://www.rhodesia.co.za/Images/large/SRR27.jpg>: "1924 KGV Admiral £1, deep purple  
shade. In combination with pair 10/- plus 5/- regular issue on piece, company violet cancel.  
Mewett 218, 216 SG 14".



<http://www.rhodesia.co.za/Images/large/SRR20.jpg>: “1924 KGV Admiral £20. Company violet cancel and red pen mark, pin holes as often found, exceptionally fine with strong colour. Scarce. Mewett 221”

<http://www.rhodesia.co.za/Images/large/RA2338.jpg>: “1924 KGV £5 Admiral, in combination with 10/- on piece. Each pen cancelled, perfined and violet oval cancels dated 15 OCT 1928. Mewett 219, 216”.

c1930 Cigarette Tax stamp



<http://www.rhodesia.co.za/Images/large/RA3120.jpg>: “c1930 'Cigarette Tax' Stamp, 1/3 pale brown. Faults including portion severed at left and re-joined, fine and scarce.”.

1931 (1/4) King George V (new design), and Victoria Falls, 15 postage stamps, different versions. (Mi 15-29)



<http://www.rhodesia.co.za/Images/large/SR31.jpg>: “Set perf. 12 including 1½d booklet stamp. 13 values very fine mint. SG 15-27”.



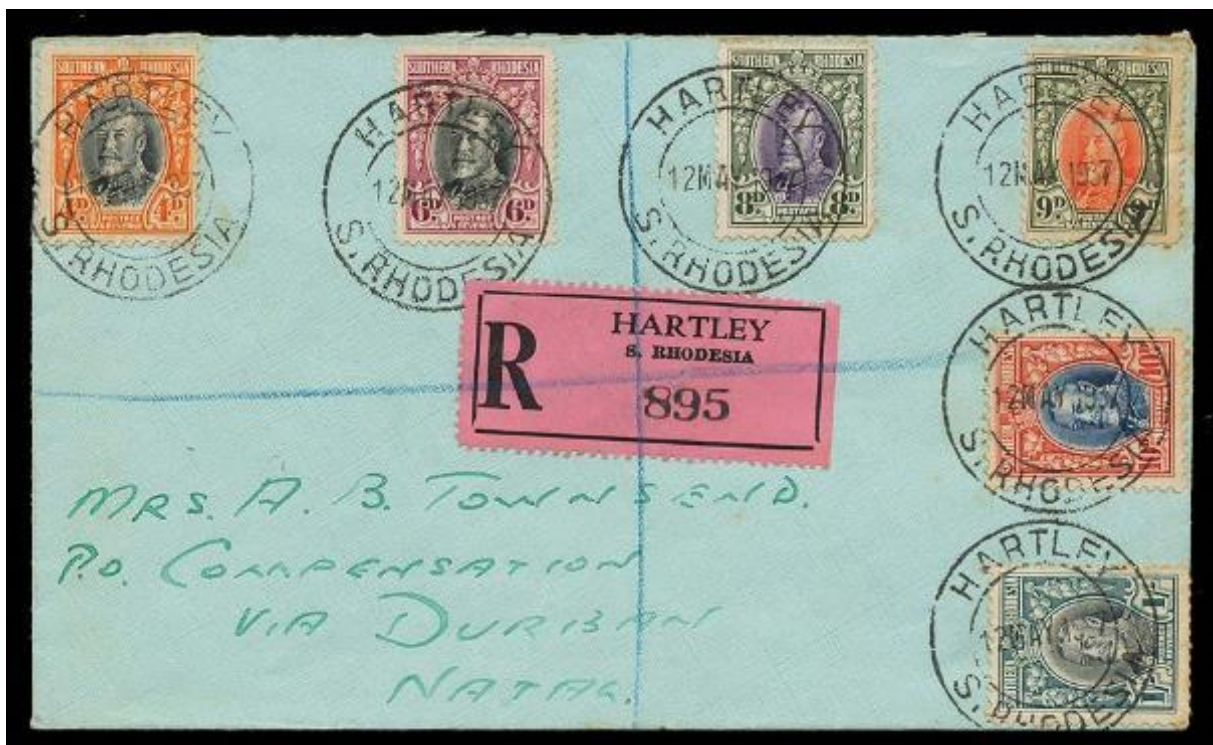
<http://www.rhodesia.co.za/Images/large/SR32.jpg>: "Set perf. 11½. 11 values very fine mint. SG 15a-26a".



<http://www.rhodesia.co.za/Images/large/SR888.jpg>: "Set perf. 14. Five values very fine mint. SG between 15b-23b".



<http://www.rhodesia.co.za/Images/large/SR1043.jpg>: "1936 27th May, large part of a large '(ON) HIS MAJESTY'S SERVICE' printed cover bearing KGV 6d x three and 1/- Field Marshals (SG 20a, 23a), cancelled 'SALISBURY' and addressed to England. Further with 'EMPIRE EXHIBITION' publicity labels at lower right. Reduced at left, still attractive."



<http://www.rhodesia.co.za/Images/large/AR434.jpg> : “1937 12th May, registered envelope addressed to South Africa. Bearing Field Marshal 4d, 6d, 8d, 9d, 10d and 1/- (SG 19, 20b, 21, 21b, 22a, 23) each tied by a HARTLEY (12 May) double circle datestamp. Black on pink registration label and additional Hartley cds on reverse.”.



[http://www.rhodesianstamps.net/Southern\\_Rhodesia/Postmarks/On\\_Admirals/5\\_menu.jpg](http://www.rhodesianstamps.net/Southern_Rhodesia/Postmarks/On_Admirals/5_menu.jpg)  
Cancelled SHANGANI.

[http://www.rhodesianstamps.net/Southern\\_Rhodesia/Postmarks/On\\_Field\\_Marshal/SR\\_44\\_2\\_RURGWE.jpg](http://www.rhodesianstamps.net/Southern_Rhodesia/Postmarks/On_Field_Marshal/SR_44_2_RURGWE.jpg): “RURGWE. 24 NOV 1932 – Type 13”.



<http://www.rhodesianstudycircle.org.uk/wordpress/wp-content/uploads/2017/08/Mazoe.D3-300x264.jpeg>: “Mazoe, Mazoe District. 2nd Mazoe Post Office. Post Office History. 1893.08.01 – Opened as postal agency under Salisbury. 1896.00.00 – First Post Office building opened. 1908.00.00 – Second Post Office building opened. Service: 1893.08.01 – Mail service by runners to Salisbury. 1902.04.01 – Mail service by coach/mail cart to Salisbury. 1912.11.04 – Mail cart to Jumbo. 1917.09.25 – Mail service by runners. 1919.11.23 – Mail service by runners to Mazoe Siding. 1935.06.27 – Daily mail service by motor car.”.

<http://www.rhodesianstudycircle.org.uk/wordpress/wp-content/uploads/2017/08/Mazoe-Post-Office-2-300x222.jpg>

<http://www.rhodesianstudycircle.org.uk/wordpress/wp-content/uploads/2017/08/Mazoe-Coach-2-300x180.jpg>



<http://www.rhodesia.co.za/Images/large/SR399.jpg> : “DAWSONS dc, large part strike dated 29 JUL 33, on 1d Field Marshal on piece.”.

<http://www.rhodesia.co.za/Images/large/SR424.jpg> : “GLENDALE dc, almost complete crisp strike dated 15 OCT 1934, on pair 1d KGV Field Marshals on piece.”.

<http://www.rhodesia.co.za/Images/large/SR429.jpg> : “MATOPOS tc, large part strike dated 15 NOV 33, on KGV 1d Field Marshal.”.



<http://www.rhodesia.co.za/Images/large/SR431.jpg> : “PENHALONGA dc, complete crisp strike dated 23 SEP1937, on KGV 1d Field Marshal on piece.”.

<http://www.rhodesia.co.za/Images/large/SR410.jpg> : “ZAWI dc, part strike dated 29 DEC 1933, on KGV 1d Field Marshal.”.

<http://www.postmarks.co.za/images/Britwell.jpg> : “BRITWELL. 01.01.1935 to 02.10.1939. Situated in the Marandellas District”.

<http://www.postmarks.co.za/images/Bulawayo%20Station%2010.jpg> : “BULAWAYO STATION. 1898 to closed by March 1900. 18.06.1904 to 12.10.1948”.



<http://www.postmarks.co.za/images/Fort%20Victoria%20or%2012.jpg>: "FORT VICTORIA. 30.06.1921 to 10.11.1965. Renamed from Victoria".

<http://www.postmarks.co.za/images/Gwanda%201937.jpg>: "GWANDA. 01.01.1895 to March 1896. 30.09.1899 Closed by 31.03.1900; 31.03.1901 to 10.11.1965. Postal Agency under Bulawayo until 1905."

<http://www.postmarks.co.za/images/Hunters%20Road%201931.jpg>: "HUNTERS ROAD. 01.11.1911 to 10.11.1965. Postal agency under Gwelo". See:

<http://www.rhodesianstudycircle.org.uk/hunters-road/>: "Hunters Road, Gwelo District. Post Office History. 1911.11.01 – Opened as a postal agency under Gwelo. 1953.00.00 – Upgraded to a money and telegraph office. Service: 1911.11.01 – Mail service by rail".

[http://www.rhodesianstamps.net/Southern\\_Rhodesia/Postmarks/On\\_Field\\_Marshal/SR\\_445\\_SEIGNEURY\\_DRIFT.jpg](http://www.rhodesianstamps.net/Southern_Rhodesia/Postmarks/On_Field_Marshal/SR_445_SEIGNEURY_DRIFT.jpg): "SR 445. SEIGNEURY DRIFT. 17 AUG ? Type 13. Part strike".



<http://www.postmarks.co.za/images/Lonely%20Mine%201934.jpg>: "LONELY MINE. 15.05.1911 to 10.11.1965. Postal agency under Turk Mine".

<http://www.rhodesianstudycircle.org.uk/wordpress/wp-content/uploads/2017/08/Arcturus.D2-300x197.jpg> . Cancelled ARCTURUS



<http://www.rhodesianstudycircle.org.uk/wordpress/wp-content/uploads/2017/08/APPS.C.23-300x193.jpg>: "Arcturus is a village that grew up around, and named after, Arcturus Mine. The mine, established in 1891, was one of the leading and oldest gold producers in Rhodesia and started operations in 1907. Post Office History. 1910.02.03 – Opened as a postal agency (previously a telegraph office). 1911.03.31 – Upgraded to a money and telegraph office. 1952.00.00 – New post office building opened."

[http://www.rhodesianstamps.net/Southern\\_Rhodesia/Postmarks/On\\_Field\\_Marshal/SR\\_448\\_SOMABULA.jpg](http://www.rhodesianstamps.net/Southern_Rhodesia/Postmarks/On_Field_Marshal/SR_448_SOMABULA.jpg): "SR 448. SOMABULA. 13 MAR 1937 Type 13. Solid block for '3' in 1937".



<http://www.postmarks.co.za/images/Craigmore%202.jpg>: "CRAIGMORE. 01.06.1925 to 10.11.1965. Melssetter District".

<http://www.postmarks.co.za/images/DElano%201.jpg>: "DELANO. 01.07.1930 to 03.09.1934. Postal agency under Gwelo".

<http://www.postmarks.co.za/images/Dett%202.jpg>: "DETT. 01.02.1917 to 10.11.1965. Wankie District".

[http://www.rhodesianstamps.net/Southern\\_Rhodesia/Postmarks/On\\_Field\\_Marshal/SR\\_449\\_UMSWESWE.jpg](http://www.rhodesianstamps.net/Southern_Rhodesia/Postmarks/On_Field_Marshal/SR_449_UMSWESWE.jpg): "SR 449. UMSWESWE. 8 FEB 1934 Type 13x".



[http://www.rhodesianstamps.net/Southern Rhodesia/Postmarks/On Field Marshal/SR 44 1\\_QUE\\_QUE.jpg](http://www.rhodesianstamps.net/Southern_Rhodesia/Postmarks/On_Field_Marshal/SR_44_1_QUE_QUE.jpg): "Very Rare Specially in this period". Cancelled QUEQUE.

<https://i.ebayimg.com/thumbs/images/g/XiEAAOSwQwBZk18V/s-l225.jpg>: "SOUTHERN RHODESIA POSTMARK / CANCEL "NUANETSI" 1933".

<http://www.rhodesianstudycircle.org.uk/wordpress/wp-content/uploads/2017/08/Gwaai-Settlement.D2-275x300.jpeg>: "Gwaai Settlement. Gwaai Settlement was located on the edge of the Wankie Game Reserve and was made up of a group of farmers. Mainly noted for potato growing, the farms had issues with raising cattle due to the tsetse fly. Post Office History. 1931.09.14 – Postal Agency under Wankie opened at local store. Service: 1931.09.14 – Mail taken to Intundla Siding and carried by native runner.".



[http://www.rhodesianstamps.net/Southern Rhodesia/Postmarks/On Field Marshal/SR 44 0\\_PENKRIDGE.jpg](http://www.rhodesianstamps.net/Southern_Rhodesia/Postmarks/On_Field_Marshal/SR_44_0_PENKRIDGE.jpg) : "Very Rare Specially in this period".

[http://www.rhodesianstamps.net/Southern Rhodesia/Postmarks/On Field Marshal/SR 40 4\\_BRITWELL.jpg](http://www.rhodesianstamps.net/Southern_Rhodesia/Postmarks/On_Field_Marshal/SR_40_4_BRITWELL.jpg): "SR 404. BRITWELL. 15 MAY 1936 Type 13. Very Rare".

[http://www.rhodesianstamps.net/Southern Rhodesia/Postmarks/On Field Marshal/SR 42 7\\_LOBANGWE.jpg](http://www.rhodesianstamps.net/Southern_Rhodesia/Postmarks/On_Field_Marshal/SR_42_7_LOBANGWE.jpg): "SR 427. LOBANGWE. 15 JAN 32 Type 13. RARE".



[http://www.rhodesianstamps.net/Southern Rhodesia/Postmarks/On Field Marshal/SR 432\\_MAZUNGA.jpg](http://www.rhodesianstamps.net/Southern_Rhodesia/Postmarks/On_Field_Marshal/SR_432_MAZUNGA.jpg): "SR 432. MAZUNGA. 29 MAY 1931 Type 13".



[http://www.rhodesianstamps.net/Southern Rhodesia/Postal History/SR709\\_1931 to Canada.jpg](http://www.rhodesianstamps.net/Southern_Rhodesia/Postal_History/SR709_1931_to_Canada.jpg): "SR 709. Envelope to Vancouver with three 1d Field Marshal. 3d Surface Rate to Canada. Cancelled PLUMTREE 24 NOV 1931".



<http://www.rhodesia.co.za/Images/large/SR676.jpg>: "1931 30th April, cover bearing KGV 1d Field Marshal (SG16), cancelled 'UMTALI' and addressed to 'Lieut. A. S. Hickman, B.S.A. Police, Bulawayo'. Upon arrival re-directed to Victoria Falls and receiving an arrival strike dated 11th May. Light soiling."



<http://www.rhodesianstudycircle.org.uk/wordpress/wp-content/uploads/2017/08/Mutambara.McElroyF-264x300.jpeg>: "Mutambara Mission Hospital

Medical work started at the mission in 1909 with the arrival of nurse Miss E.D. Nourse. The beginnings of the Mutambara Mission Hospital began in 1918 with construction of a one-room maternity hospital. By 1937, Reverend Roberts reported that the medical work of the mission had increased to such an extent that it had completely outgrown the mission Medical Department. From January to September 1937, over 11,000 outpatients and about 500 in-patients had been treated in its 18-bed facility. The hospital was remodeled and increased from 55 to 100 beds beginning in 1967 to address “woefully inadequate conditions” and “untold problems in delivering medicines and supplies.”, and In June 1918 the Methodist Woman’s Foreign Missionary Society (WFMS) began work at Mutambara, laying the foundations of a girl’s school. Lula Tubbs and Sadie Rexrode were the first WFMS missionaries at Mutambara. They walked the fifty miles from Umtali to the mission in order to be able to visit the kraals along the way down – a journey that took them ten days. Their work consisted of teaching in the Primary Department of the school and supervising the “industrial training” (sewing, etc.) of the girls. In May 1919 construction of a schoolhouse began, which for some months housed the WFMS workers and the boarding girl’s school. By 1922, total enrollment was 310 girls, with 72 in the boarding department (living at the mission). Mutambara currently consists of a church, Primary school (grades 1-7) and 120-bed hospital.”.



<http://www.postmarks.co.za/images/Beit%20Bridge%204.jpg:m> “BEIT BRIDGE. 02.09.1929 to 10.11.1965. Border Post with South Africa”.

<http://www.postmarks.co.za/images/Belingwe%204.jpg>: “BELINGWE. 02.01.1895 to 10.11.1965”.

<http://www.rhodesia.co.za/Images/large/RA7782.jpg>: “1½d, perf. 12 ex. booklets. Block of four, fine used cancelled ‘QUE QUE 8 NOV 1935’, irregular perfs. at base. SG 16c”.



[http://www.rhodesianstamps.net/Southern\\_Rhodesia/Postmarks/On\\_Field\\_Marshal/SR\\_42\\_2\\_IRON\\_MINE\\_HILL.jpg](http://www.rhodesianstamps.net/Southern_Rhodesia/Postmarks/On_Field_Marshal/SR_42_2_IRON_MINE_HILL.jpg): "IRON MINE HILL 24 JUN 32 Type 13s". See:

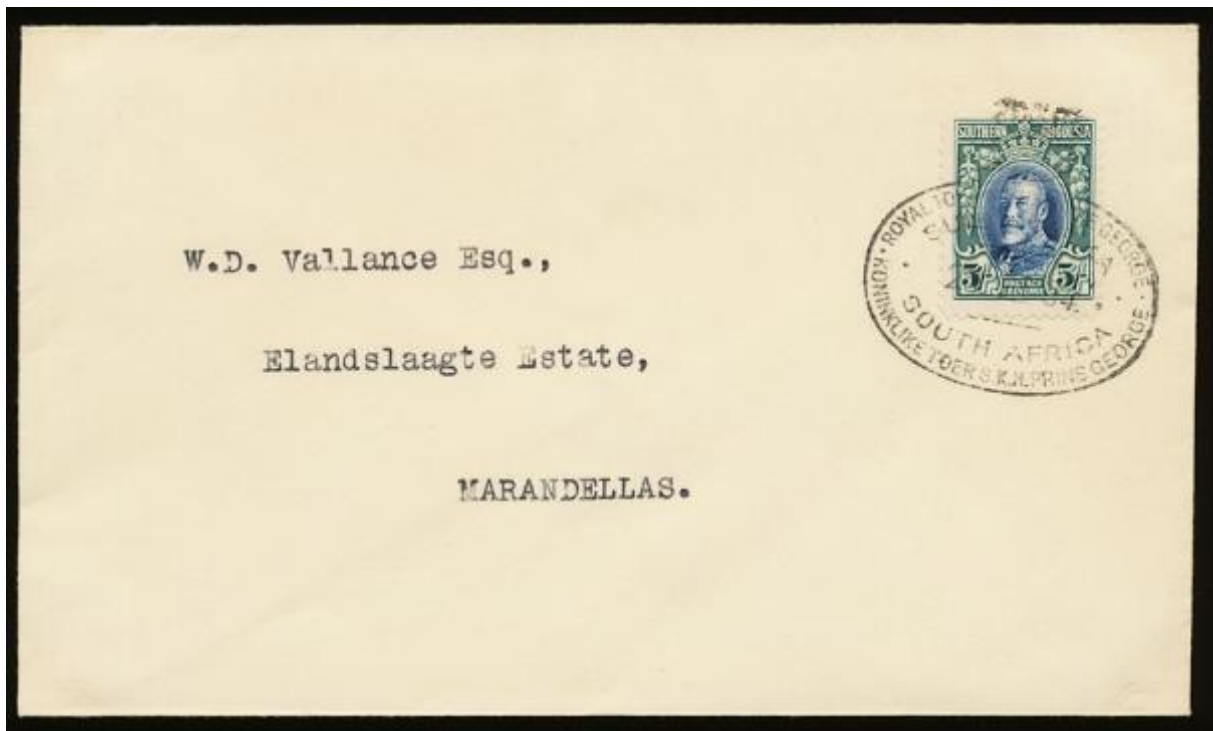
<http://www.rhodesianstudycircle.org.uk/iron-mine-hill/>: "Iron Mine Hill, Gwelo District – Rhodesia/Southern Rhodesia. There were two post offices called Iron Mine Hill. One office was located at the mine run adjacent to where the miners smelted ore, and the second was at a railway siding, run by a storekeeper Mr J Picken (later turned farmer). The two post offices were approximately 3.5 miles apart. Date: 29.07.1894 – 05.05.1950. Type: Inauguration of mail service from Iron Mine Hill to Fort Victoria by Herman Bezuidenhout. Post Office (1897/8) at the old settlement. Post and telegraph office under Mazoe. Service: Coach by H B Bezuidenhout to Fort Victoria (29.07.1894), Rail to Umvuma (19.06.1913). Notes: Iron Hill Mine closed (1912). Iron Mine Hill Siding opened (1913). Closed (01.08.1919 – 01.11.1919)".



<http://www.airmails.co.uk/catalogue/99000onwards/100120.jpg> : “(Southern Rhodesia) F/F Salisbury to Beira, bs 4/8,”.



[http://www.rhodesianstamps.net/Southern\\_Rhodesia/Postmarks/On\\_Field\\_Marshal/SR\\_420\\_IMPERIAL\\_PRESS\\_CONFERENCE.jpg](http://www.rhodesianstamps.net/Southern_Rhodesia/Postmarks/On_Field_Marshal/SR_420_IMPERIAL_PRESS_CONFERENCE.jpg) : “SR 420. IMPERIAL PRESS CONFERENCE 17 FEB 1935 Type 13y”.



<http://www.rhodesia.co.za/Images/large/SR50.jpg>: “1934 21st March, KGV ½d to 5/- Field Marshals (less 9d not yet issued), 2d and 3d large Falls, ½d, 1½d and 10d perf. 11½, others perf. 12. Each on separate cover with special crested oval 'ROYAL TOUR H.R.H. PRINCE GEORGE SOUTH AFRICA' strikes dated 21 III 34. A delightful set, superb and fresh. Very rare.”.



[https://encrypted-tbn0.gstatic.com/images?q=tbn:ANd9GcSoUCRryq\\_VthTXBRrEvQk6nteWT8gxqyNJS2D6i94jE\\_nh7gD1p](https://encrypted-tbn0.gstatic.com/images?q=tbn:ANd9GcSoUCRryq_VthTXBRrEvQk6nteWT8gxqyNJS2D6i94jE_nh7gD1p): “Southern Rhodesia 1931, Victoria Falls stamp timbre Briefmarke francobolli.”.

[http://www.rhodesianstamps.net/Southern\\_Rhodesia/Postmarks/On\\_Admirals/4\\_menu.jpg](http://www.rhodesianstamps.net/Southern_Rhodesia/Postmarks/On_Admirals/4_menu.jpg): “SR 405. BULAWAYO STATION. 23 NOV 1931 Type 14A”.



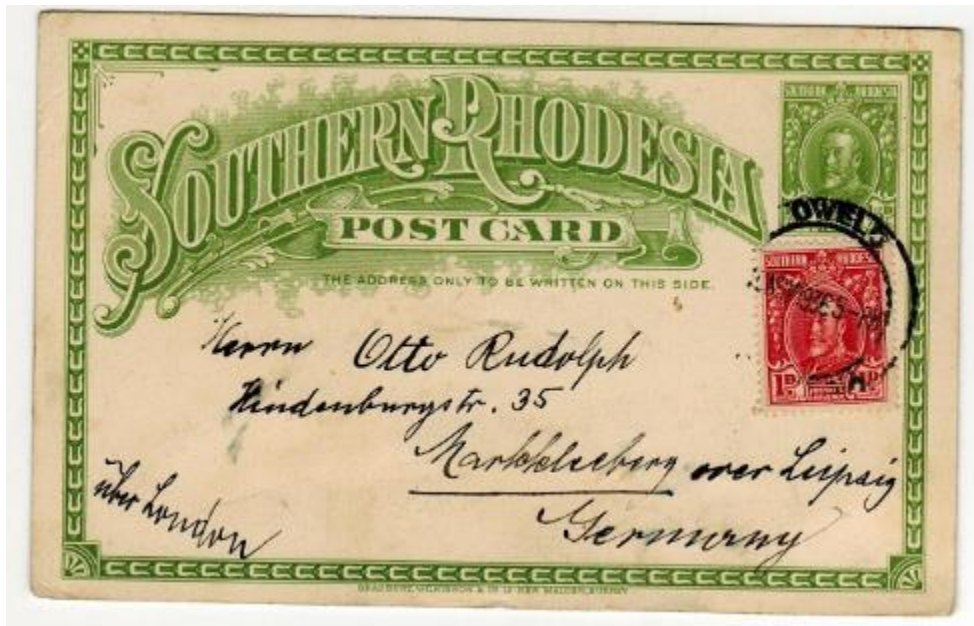
[http://www.rhodesia.co.za/Images/featured/VF131\\_f.jpg](http://www.rhodesia.co.za/Images/featured/VF131_f.jpg): "1929 3d small Falls, essay for the design virtually as issued. Handpainted in shades of deep blue highlighted in Chinese white. Countersunk mounted on thick card with 'WATERLOW & SONS / LIMITED / SPECIMEN' embossed seal at lower right, the card attached to a protective flap. The reverse of the card struck with a black boxed 'OFFICE OF THE / HIGH COMMISSIONER FOR / SOUTHERN RHODESIA, / CROWN HOUSE, ALDWYCH, / LONDON, W.C. 2.' handstamp. Endorsed in ink 'Original' then 'Approved vide Tresy. / letter 25/11/29', further 'Approved by ? / 31/5/30' and at left 'new issue of stamps 1930 / 2d and 3d values.' The front of the card with some pencil notations relevant to the size etc. Together with an original sales invoice from Stanley Gibbons dated 3rd December, 1941, for the sum of £10. EXQUISITE AND RARE, few essays exist from the entire Southern Rhodesia period".



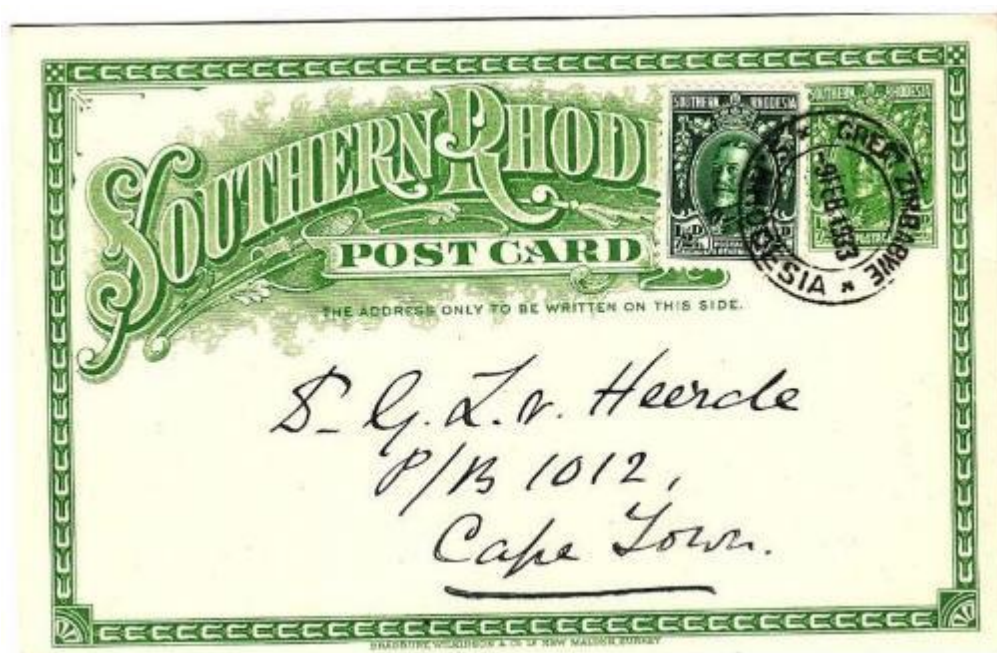
<http://www.rhodesia.co.za/Images/large/RA8975.jpg>: "3d small Falls. Upper right corner block of four, hinged on margin and lower pair. SG 18".



<http://www.rhodesia.co.za/Images/large/VF135.jpg>: "1932 18th January, cover bearing strip of three 3d small Falls (SG 18) twice cancelled 'MTOKO' and another below. Addressed to England and endorsed 'BY AIR MAIL' with relevant label attached, this then endorsed 'UNDERPAID FOR AIRMAIL', the label scored through and noted to be charged at '2d', although this also scored through as the cover was subsequently sent by surface mail. With an arrival backstamp dated the 9th February. Note: as a result of the various mishaps that occurred to the airmail flights, this cover actually arrived some seven days prior to the mail that did go by air".



<http://www.stevedrewett.com/images/11117.jpg>: "SOUTHERN RHODESIA - 1931 1/2d green PSC to Germany used at GWELO. H&G".



<http://www.postmarks.co.za/images/Great%20Zimbabwe%203%20cover.jpg>: "GREAT ZIMBABWE. 15.06.1914 to 12.04.1947. Postal Agency under Fort Victoria. Renamed from Zimbabwe".



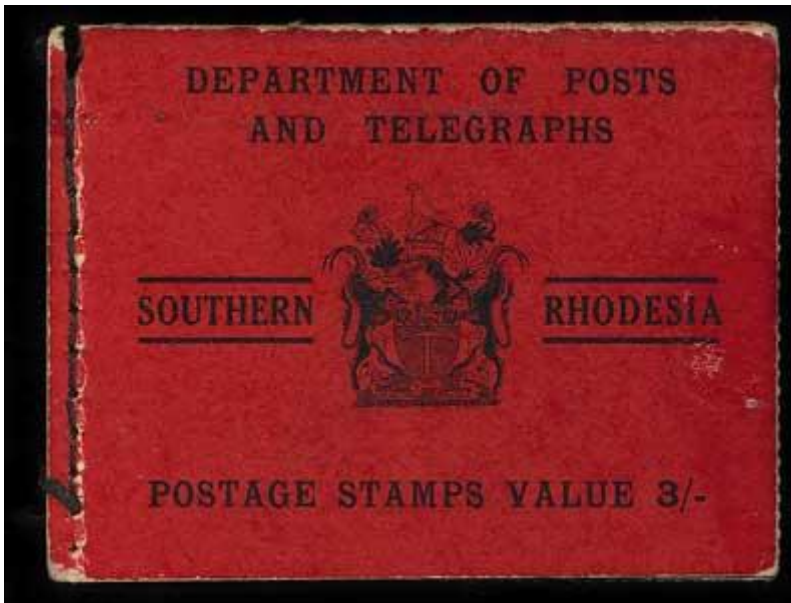
<http://www.rhodesia.co.za/Images/large/SR292.jpg>: "1936 (date unclear) KGV 1d Field Marshal envelope (H&G B4), cancelled 'BULAWAYO STATION' and addressed to a passenger on the S. S. Llandlaff Castle, Port Elizabeth, with oval violet Union Castle Steamship Company arrival backstamp on reverse dated the 11th November. Together with an unused Postcard of the Steamer 'LLANDLAFF CASTLE'. A most attractive pair.".



<http://www.rhodesia.co.za/Images/large/RA708.jpg>: "1933 7th June, KGV 1d Field Marshal envelope (H and G B4) uprated with KGV 1d and 8d Field Marshals (SG 16, 22) Airmail Salisbury to England. Envelope roughly opened on reverse, otherwise a most attractive and unusual COMMERCIAL example of the 10d Airmail rate to the UK."



<http://www.stevedrewett.com/images/11941.jpg>: "SOUTHERN RHODESIA - 1931 4d dark blue RPSE sent on the Imperial Airways EXPERIMENTAL FLIGHT. H&G 2a. 1931 4d dark blue on cream registered postal stationery envelope (size H2) addressed to C.Wyndham in Johannesburg bearing additional 1d and 4d adhesives tied by SALISBUY/S.RHODESIA cds dated 16.DEC.31. The envelope is struck EXPERIMENTAL FLIGHT in violet being carried on the Imperial Airways flight of December 19th. Central vertical fold and complete with the original registered letter receipt of sending. H&G 2a."



[http://www.rhodesia.co.za/Images/featured/RA7827\\_f.jpg](http://www.rhodesia.co.za/Images/featured/RA7827_f.jpg): "3/- black on red KGV Field Marshal Booklet. Only two remaining complete panes of the 1½d value, in fine condition for this extremely rare booklet. SG SB3. Note: very few complete booklets exist. Examples containing some panes are almost as rare."

1931 Revenue stamps



<http://www.rhodesia.co.za/Images/large/SRR52.jpg>: “1931 KGV Field Marshals, £10, pair and single £1 and 10/-, on piece pen cancelled and violet oval cancels. Mewett 229, 226, 225”.



<http://www.rhodesia.co.za/Images/large/SR210.jpg>: “1931 KGV Field Marshals, £20 plus 3/- and regular issue 2/-, on piece cancelled oval 'COURT OF SOUTHERN RHODESIA / SALISBURY 28 JUN 1932' cancel. Fresh and attractive. Mewett 230, 223”.



[http://www.rhodesianstamps.net/Southern\\_Rhodesia/Revenues/SR%20384.jpg](http://www.rhodesianstamps.net/Southern_Rhodesia/Revenues/SR%20384.jpg) : “SR178.  
7/6 Purple & olive grey”.

[http://www.rhodesianstamps.net/Southern\\_Rhodesia/Revenues/SR%20387.jpg](http://www.rhodesianstamps.net/Southern_Rhodesia/Revenues/SR%20387.jpg): “SR 181. £2  
Red brown & brown”.

[http://www.rhodesianstamps.net/Southern\\_Rhodesia/Revenues/SR%20388.jpg](http://www.rhodesianstamps.net/Southern_Rhodesia/Revenues/SR%20388.jpg): “SR 183. £5  
Blue & ultramarine”.

1931 Stationary for Revenue purposes



<http://www.rhodesia.co.za/Images/large/SRR80.jpg>: "1935 1st February, printed 'STANDARD BANK OF SOUTH AFRICA' cheque, embossed on front with orange oval 'ONE PENNY' impression, then further on reverse applied with KGV Field Marshal ½d pair (SG 15a), pen cancelled. Note: cheques were charged a duty of 1d which was the embossed type, and then further charged at 1d when it was cashed".

1932 (1/5) Victoria Falls, 2 postage stamps. (Mi 30-31)



<http://www.rhodesia.co.za/Images/large/SR574.jpg>: "2d and 3d, very fine unmounted. SG 29-30".



<http://www.rhodesia.co.za/Images/large/RA8698.jpg>: "1936 10th June, cover bearing 2d large Falls plus KGV Field Marshal 1/- perf. 11½ (SG 29, 23a), cancelled 'GWELO' addressed to the USA. Opening tear at top, clean and an uncommon duty on cover".



<http://www.rhodesia.co.za/Images/large/SR421.jpg>: "DARWENDALE dc, almost complete strike dated 20 MAR 1938, on 2d large Falls."

<http://www.rhodesia.co.za/Images/large/SR878.jpg>: "SALISBURY. N. dc, crisp large part strike dated 29 JAN 1935, on 3d large Falls".

<http://www.postmarks.co.za/images/Chipinga%201938.jpg>: "CHIPINGA. 29.10.1904 to 30.10.1909. 04.05.1910 to 10.11.1965. Melssetter District".



<http://www.rhodesia.co.za/Images/large/AR309.jpg>: "1938 (28th February), Railway TPO cover from Mozambique addressed to England. Bearing Mozambique 5c, 20c and pair of 80c tied by GONDOLA (28 Feb) double circle datestamps. The reverse bearing a Southern Rhodesia 1932 Large Falls 2d green and chocolate (SG 29) also tied by a GONDOLA (28 Feb) datestamp. With a Travelling Post Office AMBULANCIA / BEIRA-UMTALI (1 Mar) double circle datestamp also on the reverse. A very attractive and RARE combination and TPO cover. Note: Gondola is an intermediate stop on the railway line approximately midway between Beira and Umtali. The Beira and Mashonaland and Rhodesia Railways operated a T.P.O. on

this part of the line until 1949, and letters bearing Rhodesian duties were not only accepted but also cancelled during this period.”.

1935 (6/5) George V 25 years King, 4 postage stamps. (Mi 32-35)



[https://www.freestampcatalogue.nl/media/catalog/product/cache/1/small\\_image/400x400/040ec09b1e35df139433887a97daa66f/r/z/rzp0032.jpg](https://www.freestampcatalogue.nl/media/catalog/product/cache/1/small_image/400x400/040ec09b1e35df139433887a97daa66f/r/z/rzp0032.jpg)



<http://www.rhodesia.co.za/Images/large/RA2278.jpg>: "Set each in a block of four and each cancelled with central 'MELSETTER / 31 DEC 35' datestamps, this being the date of their withdrawal. Superb and attractive. SG 31-4".



<http://www.rhodesia.co.za/Images/large/RA8988.jpg>: "1935 17th May, cover bearing KGV Silver Jubilee complete set of four (SG 31-34), cancelled 'WANKIE', sent airmail to England.".



<http://www.rhodesia.co.za/Images/large/RA9316.jpg>: "GREAT ZIMBABWE dc, complete strike dated 19 SEP 1935, on KGV 1d Silver Jubilee on piece.".

<http://www.rhodesia.co.za/Images/large/SR859.jpg>: "MAYFAIR MINE dc, complete strike date unclear, on KGV 1d Silver Jubilee on piece. Very scarce.".

<http://www.postmarks.co.za/images/Felixburg%204.jpg>: "FELIXBURG. 01.03.1906 to 01.11.1964. Postal agency under Enkeldoorn".



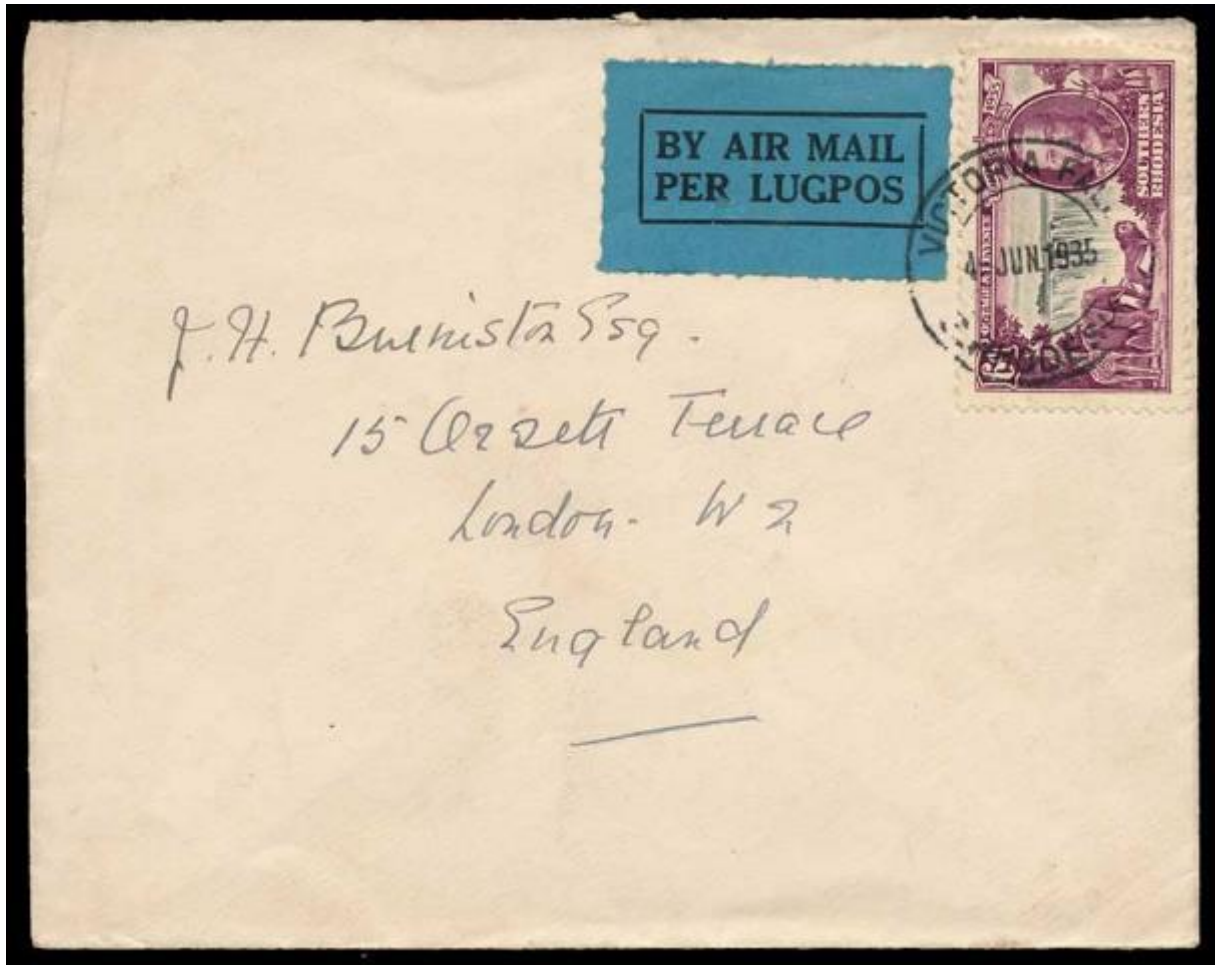
<http://www.postmarks.co.za/images/Glendale%201935%202.jpg>: "GLENDALE (STATION).  
13.01.1915 to 10.11.1965. Postal agency under Salisbury".

<http://www.postmarks.co.za/images/Legion%20Mine%202.jpg>: "LEGION MINE. 17.12.1934  
to 04.06.1965. Postal agency under Gwanda".

<http://www.postmarks.co.za/images/Lydiate%201935.jpg>: "LYDIATE. 28.07.1922 to  
05.08.1927; 01.08.1918 to 01.12.1940. Postal agency under Hartley".



<http://www.postmarks.co.za/images/Birchenough%20Bridge%201935%20cover.jpg>:  
"BIRCHENOUGH BRIDGE. 20.12.1935 to 15.03.1939. Postal agency under Chipinga".



<http://www.rhodesia.co.za/Images/large/SR665.jpg>: "1935 4th June, cover bearing KGV ^d Silver Jubilee (SG 34), cancelled 'VICTORIA FALLS', sent airmail to England. Fine and attractive."



<http://www.postmarks.co.za/images/Amandas%205.jpg>: "AMANDAS. Open (Postal markings): 09.01.1929 to 01.06.1935 . Before 1929 called Concession Rail. After 1935 reverted to Concession"

1935 (August)-1941 Victoria Falls with 'Postage and Revenue', 2 stamps, different versions.  
(Mi 36-37)



<http://www.rhodesia.co.za/Images/large/SR579.jpg>: “2d and 3d, plus 2d perf. 12½ and both line and comb types. Superb unmounted. SG 35-35b and var.”.



<http://www.rhodesia.co.za/Images/large/RA8606.jpg>: “GUINEA FOWL dc, complete crisp strike dated 14 NOV 51 on 2d large Falls on piece”.

<http://www.rhodesia.co.za/Images/large/SR430.jpg>: “MADUMABISA dc, almost complete bold strike dated 8 FEB 36, on 2d large Falls on piece”.

<http://www.rhodesia.co.za/Images/large/SR863.jpg>: “UMTALI / S. RHODESIA sc relief, crisp complete strike dated 12 JY 50, on 2d large Falls. Scarce”.



<http://www.postmarks.co.za/images/Ardbennie%201945.jpg>: “ARDBENNIE. Postal agency under Salisbury. Open: 08.06.1941 to 10.11.1965”.

<http://www.rhodesianstudycircle.org.uk/wordpress/wp-content/uploads/2017/08/Odzi.D4-300x251.jpeg>: “Odzi is a village off the main Harare-Mutare road. Odzi was established as a railway siding in 1899. Post Office History: 1892.03.31 – Deputy Post Office. 1896.06.00 –

Closed during the Mashona Rebellion. 1900.00.00 – Re-opened at the railway station.  
1927.04.01 – Upgraded to a money and telegraph office... Service: 1892.03.31 – Mail service  
by coach from Salisbury. 1900.00.00 – Mail service by rail”.



<http://www.rhodesianstudycircle.org.uk/wordpress/wp-content/uploads/2017/08/Queens-Park.D2-300x283.jpeg>: “Queens Park. Bulawayo District. Post Office History 1950.09.03 –  
New post office building opened. 1951.00.00 – Burgled”.



<http://www.rhodesia.co.za/Images/large/SR892.jpg>: “FILABUSI dc in VIOLET, complete crisp  
strike centrally placed on 2d Falls block of four on piece. Most attractive and very scarce.”.

<http://www.postmarks.co.za/images/Heany%20Camp%203.jpg>: “HEANY CAMP. 04.02.1943  
to 04.01.1946; 01.06.1949 to 04.12.1953. Royal airforce camp near Bulawayo”.

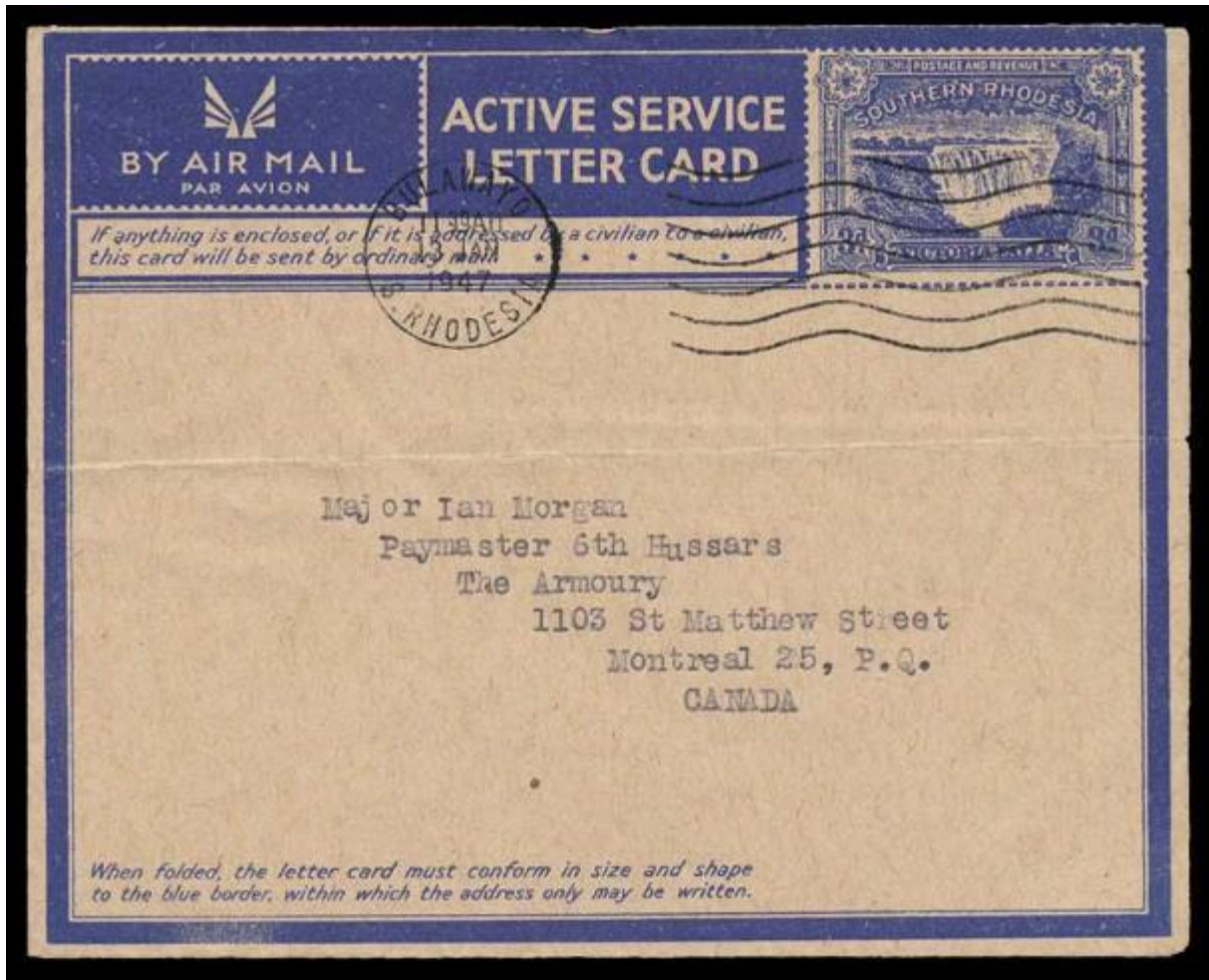


<http://www.postmarks.co.za/images/Lalapanzi%20%20cover.jpg>: "LALAPANZI. 16.10.1911 to 10.11.1965. Postal agency under Gwelo. Post Office 1951".



<http://www.stevedrewett.com/images/12297.jpg>: "SOUTHERN RHODESIA - 1944 3d deep ultramarine uprated air letter sheet to UK used at INYANGA. H&G 5. 1944 3d deep ultramarine on coarse buff paper 'Military Occupation' postal stationery air letter sheet

addressed to UK (genuine use) uprated with additional 3d (corner fault) and cancelled by a light strike of the INYANGA/S.RHODESIA cds (Proud type D5). H&G 5.”.



<http://www.rhodesia.co.za/Images/large/SR638.jpg>: “1947 13th January, 3d Active Service Letter Card (type II, second issue on coarse buff paper, poor impression). A late philatelic useage machine cancelled 'BULAWAYO', addressed to Canada without message. Scarce.”



<http://www.michael-hamilton.com/images/RHOD56601.jpg>: “BELVEDERE CAMP 21 MAY 42”.



<http://www.rhodesia.co.za/Images/large/SRR204.jpg>: "c1937 2d large Falls, handstamped 'E' in violet circle. Apparently used without gum. Very scarce."

1937 (12/5) King George VI and Queen Elisabeth, with Victoria Falls and railway bridge, 4 postage stamps. (MI 38-41)



<http://www.rhodesia.co.za/Images/large/AR214.jpg>: "Set in imprint blocks of four. The 1d with a few split perfs in margin, otherwise superb unmounted mint. SG 36-39"



[http://i.ebayimg.com/00/s/MTA1OFgxNjAw/z/Hd4AAOSwN6JY~uf/\\$\\_57.JPG](http://i.ebayimg.com/00/s/MTA1OFgxNjAw/z/Hd4AAOSwN6JY~uf/$_57.JPG) Cancelled UMTALI.



<http://www.rhodesia.co.za/Images/large/SR328.jpg>: "PARCELS BULAWAYO RHODESIA (blank below) dc, complete strike dated 12 MAY 1937, on KGVI 3d and 6d on piece, some faults. Most unusual and not recorded in Proud."

<http://www.postmarks.co.za/images/Inyanga%201937.jpg>: "INYANGA. 30.09.1897 to 10.11.1965. Postal agency under Umtali".

<http://www.postmarks.co.za/images/Jumbo%204.jpg>: "JUMBO (MINE). 01.04.1904 to 30.04.1919; 15.03.1933 to 19.03.1954; 01.07.1955 to 10.11.1965. Postal agency under

Mazoe". See: <http://www.rhodesianstudycircle.org.uk/jumbo-mine/>: "Jumbo Mine, Mazoe District. Date: 1903 – 10.11.1965. Type: Postal agency under Mazoe. Telegraph office (1903). Money and telegraph office (01.04.1904). Postal agency (31.10.1916). Service: Coach/cart to Mazoe; Coach/cart to Passaford Siding (02.04.1912). Coach/cart to Jumbo Station (10.02.1913)".



<http://www.rhodesia.co.za/Images/large/SR901.jpg>: "1937 12th May, printed First Day Cover bearing the set of four sent registered to Durban. Upon arrival endorsed at top 'Received Torn at Dbn', and the reverse applied with bilingual 'Found open and officially closed in the Post Office', this cancelled 'DURBAN 18 MAY 37'. Unusual.".