



African Studies Centre Leiden

African Postal Heritage

APH Paper 23 Part 6

Ton Dietz

British South Africa Company 1910-1924

January 2018

Introduction

Postage stamps and related objects are miniature communication tools, and they tell a story about cultural and political identities and about artistic forms of identity expressions. They are part of the world's material heritage, and part of history. Ever more of this postal heritage becomes available online, published by stamp collectors' organizations, auction houses, commercial stamp shops, online catalogues, and individual collectors. Virtually collecting postage stamps and postal history has recently become a possibility. These working papers about Africa are examples of what can be done. But they are work-in-progress! Everyone who would like to contribute, by sending corrections, additions, and new area studies can do so by sending an email message to the APH editor: Ton Dietz (dietzaj@asc.leidenuniv.nl). You are welcome!

Disclaimer: illustrations and some texts are copied from internet sources that are publicly available. All sources have been mentioned. If there are claims about the copy rights of these sources, please send an email to asc@asc.leidenuniv.nl, and, if requested, those illustrations will be removed from the next version of the working paper concerned.

African Studies Centre Leiden
P.O. Box 9555
2300 RB Leiden
The Netherlands

Telephone	+31-71-5273372
E-mail	asc@asc.leidenuniv.nl
Website	http://www.ascleiden.nl
Facebook	www.facebook.nl/ascleiden
Twitter	www.twitter.com/ascleiden
Countryportal	http://countryportal.ascleiden.nl

Illustrations cover page:

ASC Leiden postage stamp Nederland (2011): ©African Studies Centre Leiden

Cape of Good Hope postage stamp 1853:

http://upload.wikimedia.org/wikipedia/commons/thumb/7/7c/Cape_Triangular_Postage_Stamp.jpg/400px-Cape_Triangular_Postage_Stamp.jpg

Egypt postage stamp 1914:

https://upload.wikimedia.org/wikipedia/commons/4/4b/Post_Stamp_Egypt.jpg

Table of contents

Part 1: Introduction	4
Postage Stamps 1892 ‘Small Arms’	11
1893 Postal stationery	34
Part 2: 1896 New design, ‘Large Arms’	47
Part 3: 1896 Stationery and fiscal stamps	77
1896 Matabeleland Rebellion	84
1896 British South Africa Company on postage stamps of Cape of Good Hope	88
1896 Tati Concessions	92
1897 Large Arms stamps	96
Part 4: 1898 New Design ‘Arms’	109
1898 Francistown to Bechuanaland	137
1900 Currency Cards	149
Part 5: 1900 Use of BSAC stamps in the Boer War in South Africa	153
1903 Railway Stamp Tati Concession: Beira & Mashonaland Railways	160
1905 Victoria Falls stamps	166
1909 Rhodesia on BSAC stamps	176
Part 6: 1910 Double Heads stamps	191
1913-1922 Admirals stamps	224
Final period of BSAC and BSAC stamps: 1923-1924	259
Index of Postmarks British South Africa Company 1892-1924	262
A Note on sources	267

1910, 11 November, King George V and Queen Mary

I Double Heads Perforation 14



<http://www.rhodesia.co.za/Images/large/MDH480.jpg>: "Complete basic set of 18 values 1/2d to £1, fine and fresh mint. SG between 119-185 basic".

1/2p blue green (Mi 101a), oliv (Mi 101b), and yellow green (Mi 101c)



<http://www.midphil.com/images/170531.jpg>: "British South Africa Company: 1910-13, 1/2d yellow-green, Perf 14. SG 119. Unmounted mint.".

<http://www.rhodesia.co.za/Images/large/MDH691.jpg>: "1910 1/2d dull blue-green, superb and fresh unmounted. SG 120 / RJL 5". Cancelled LIVINGSTONE.

<http://www.rhodesia.co.za/Images/large/MDH217.jpg> : "dull blue-green, superb used cancelled 'LIVINGSTONE 14 OCT 13'. SG 120 / RJL 5".



<http://www.rhodesia.co.za/Images/large/D696.jpg>: "olive-green, very fine mint. SG 121 / R/L 3".

<http://www.rhodesia.co.za/Images/large/MDH819.jpg>: "1910 ½d, Perf. 13½, yellow-green. Superb and fresh unmounted. SG 182 / R/L 1".



<http://www.rhodesia.co.za/Images/large/MBSA1.jpg>: "ARCTURUS P.O. dc, crisp almost complete strike dated 10 MAR 1911, on ½d Double Head".

<http://www.postmarks.co.za/PH%20Southern%20Rhodesia%20Abercorn%20to%20Beatrice.htm>: "ARCTURUS. Postal agency in the Goromodzi District. Upgraded to a money order office on 31 March 1911. Open: 03.02.1910 to 10.11.1965".

<http://www.rhodesia.co.za/Images/large/MBSA18.jpg>: "GWANDA dc, crisp large part strike dated 1 MAR 13, on ½d Double Head (emerald-green shade)".

<http://www.rhodesia.co.za/Images/large/B353.jpg>: "INSIZA STATION dc, crisp almost complete strike dated 4 OCT 1912, on ½d Double Head".



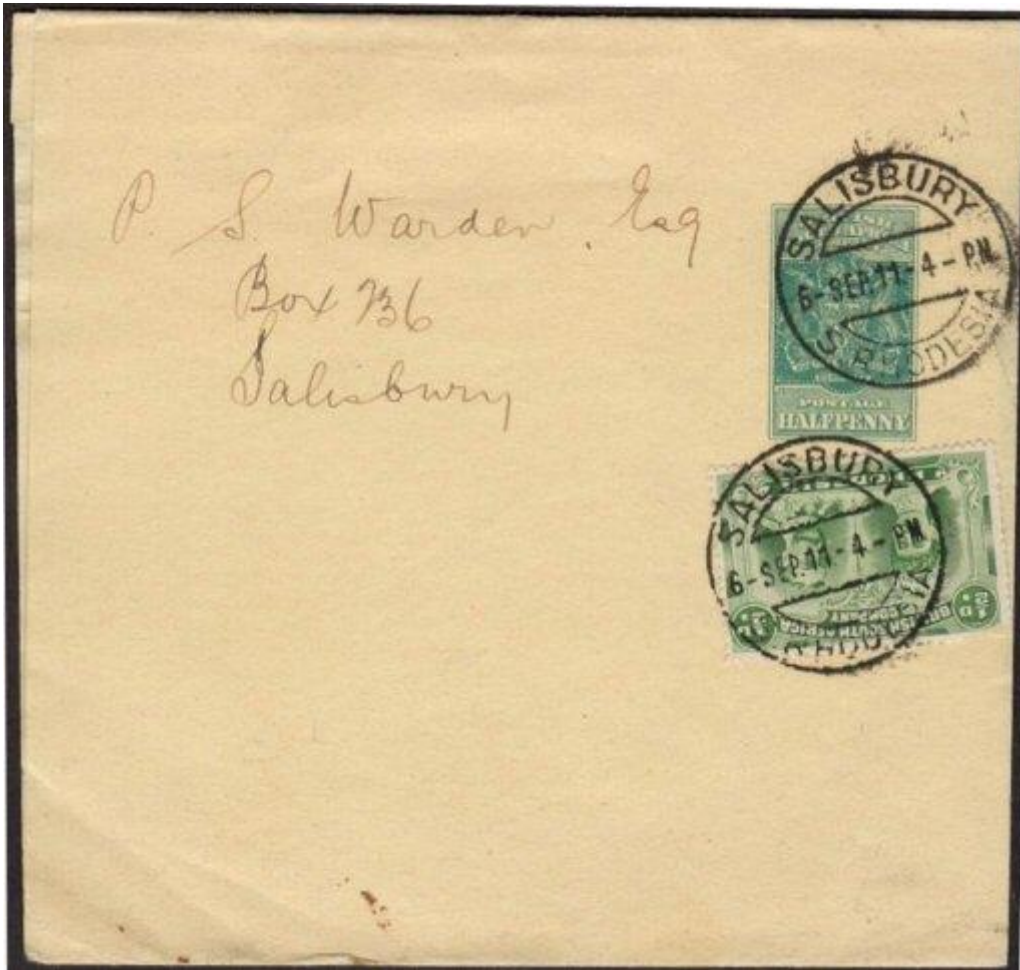
<http://www.rhodesia.co.za/Images/large/B426.jpg>: "T.P.O. UP dc, large part strike dated 13 JUL 1912, on ½d Double Head".

<http://www.rhodesia.co.za/Images/large/RA9132.jpg>: "FEIRA dc, crisp almost complete strike dated 17 APR 1911, on ½d Double Head".

<http://www.postmarks.co.za/images/Chinsali%201910.jpg>: "CHINSALI. 12.12.1907 to
23.10.1964. Sub post office under Kasama".



<http://www.gbimperf.org/sb/T14931/WANKES.jpg> Cancelled WANKIES.



[http://www.rhodesianstamps.net/BSAC/Postal Stationery/Wrapper from Salisbury.jpg](http://www.rhodesianstamps.net/BSAC/Postal%20Stationery/Wrapper%20from%20Salisbury.jpg):
"BSAC 836 H&G 1 Newspaper Wrapper 1/2d Arms Locally used with additional 1/2d Double
head Stamp a little damaged Cancelled SALISBURY 6 SEP 11".



<http://www.postmarks.co.za/images/Kalene%20Hill%20cover%201912.jpg>: "KALENE HILL. 16.05.1907 to 01.07.1922. Mission Station".

1p carmin pink (Mi 102)



http://www.rhodesianstamps.net/BSAC/1910_Double_Heads/SG124_mint.jpg

<http://www.stamps-for-sale.com/ekmps/shops/stewcoin/images/rhodesia-1910-british-south-africa-company-heads-sg-125-fine-used-11447-p.jpg> Cancelled CENTRAL BANK LTD



<http://www.rhodesia.co.za/Images/large/MDH660.jpg>: “1910 1d bright carmine, block of four lower left stamp showing 'OD' flaw. Superb CTO 'GWELO 24 DEC 1912'. SG 123 and var.”.

<http://www.rhodesia.co.za/Images/large/RA2234.jpg>: “carmine-lake, position 87 showing original flaw repaired. Very fine used 'GOLDEN VALLEY / 6 JUN 1912' (?) datestamp. Very scarce. SG 124 var.”.



http://www.rhodesianstamps.net/BSAC/1910_Double_Heads/SG123_variety_used.jpg: “1d Double Head Variety, BSAC 80. SG 123 . 1d with Major re-entries. Narrow left value Tablet, lines strengthened around Queen’s neck, ear & right shoulder and also around RHODESIA Cancelled QUE QUE 19 NOV 1910 “.

http://www.rhodesianstamps.net/BSAC/1910_Double_Heads/SG123_variety.jpg



<http://www.rhodesia.co.za/Images/large/RA9116.jpg>: “Perf. 13½ , bright carmine, very fine used cancelled 'BALLA BALLA 24 SEP 1912' datestamp, lovely strong intact colour. SG 183”.

<http://www.rhodesia.co.za/Images/large/MDH735.jpg>: “1910 1d perf. 13½ , bright carmine. Position 93 showing dot to left of Queen's head. Very fine used cancelled crisp 'RUSAPE 29 MAR 1913' datestamp. SG 183”.

<http://www.rhodesia.co.za/Images/large/RA3469.jpg>: “SHAGARI dc, fine large part strike dated APR 1912, 1d Double Head (SG 123, colour run)”.



http://www.rhodesia.co.za/images/thumbnails/B294_tn.jpg: "BANKET JUNCTION dc, fair large part strike dated 15 SEP 1911, on 1d Double Head".

<http://www.postmarks.co.za/PH%20Southern%20Rhodesia%20Abercorn%20to%20Beatrice.htm>: "BANKET (BANKET JUNCTION). In the Lomagundi District, Money order office from 1927. Open: 14.11.1906 to 10.11.1965".

http://www.rhodesia.co.za/images/thumbnails/RA9579_tn.jpg: "BATTLEFIELDS (MINE excised) tc, fair large part strike dated 24 AUG 12, on 1d Double Head".

http://www.rhodesia.co.za/images/thumbnails/RA9581_tn.jpg: "BEMBE(SI) dc, part strike, on 1d Double Head".

<http://www.postmarks.co.za/PH%20Southern%20Rhodesia%20Beitbridge%20to%20Beverly.htm>: "BEMBESI. 12.10.1906 to 10.11.1965. Postal agency under Bulawayo".



<http://www.rhodesia.co.za/Images/large/RA9580.jpg>: "BINDURA dc, fair large part strike dated 2 APR 13, on 1d Double Head".

<http://www.postmarks.co.za/PH%20Southern%20Rhodesia%20Bikita%20to%20Buhera.htm>: "BINDURA. 01.03.1913 to 10.11.1965. Renamed from Kimberley Reefs".

<http://www.rhodesia.co.za/Images/large/RA9584.jpg>: "COLLEEN BAWN dc, fair large part strike date unclear, on 1d Double Head (fault)".

<http://www.postmarks.co.za/PH%20Southern%20Rhodesia%20Chipinga%20to%20Coro%20Park.htm>: "COLLEEN BAWN. 28.01.1908 to 19.09.1913, 22.10.1913 to 31.06.1920...Gwanda District".

<http://www.rhodesia.co.za/Images/large/AD415.jpg>: "DUCHESS HILL dc, almost full strike dated 24 DEC 1912, on 1d Double Head".

<http://www.postmarks.co.za/PH%20Southern%20Rhodesia%20Craigmore%20to%20Eagle%20Hawk.htm>: "DUCHESS HILL. 14.10.1912 to 23.11.1920....Hartley District".



<http://www.rhodesia.co.za/Images/large/B318.jpg>: "ELDORADO MINE dc, crisp large part strike dated 2 FEB 1911, on 1d Double Head".

<http://www.rhodesia.co.za/Images/large/MBSA11.jpg>: "ESSEXVALE dc, large part crisp strike dated 14 JAN 1911, on 1d Double Head".

<http://www.rhodesia.co.za/Images/large/B517.jpg>: "GADZEMA dc, crisp part strike dated 20 MAY 12, on 1d Double Head".



<http://www.rhodesia.co.za/Images/large/RA9599.jpg>: "GOLDEN KOPJE dc, crisp large part strike dated OCT 1914, on 1d Double Head".

<http://www.postmarks.co.za/PH%20Southern%20Rhodesia%20Glenviile%20to%20Gwaii%20Settlement.htm>: "GOLDEN KOPJE. 15.08.1911 to 28.02.1917. Postal Agency under Sinoia".

<http://www.rhodesia.co.za/Images/large/D1233.jpg>: "GOLDEN VALLEY dc, crisp large part strike dated 1912 on 1d Double Head".

<http://www.rhodesia.co.za/Images/large/RA9595.jpg>: "GOTHIC MINE dc, fair large part strike dated 25 OCT 1912, on 1d Double Head".

<http://www.postmarks.co.za/PH%20Southern%20Rhodesia%20Glenviile%20to%20Gwaii%20Settlement.htm>: "GOTHIC MINE. 22.08.1912 to 12.05.1931. Postal Agency in the Gwelo District:.



<http://www.rhodesia.co.za/Images/large/RA9601.jpg>: "HEANY dc, large part strike dated 1911, on 1d Double Head".

<http://www.rhodesia.co.za/Images/large/RA9598.jpg>: "INYANGA dc, large part strike date unclear, on 1d Double Head".

<http://www.rhodesia.co.za/Images/large/AR116.jpg>: "LALAPANZI dc, large part strike dated 10 DEC 1912, on 1d Double Head".

<http://www.postmarks.co.za/PH%20Southern%20Rhodesia%20Karoo%20to%20Lalapamzi.htm>: "LALAPANZI. 16.10.1911 to 10.11.1965. Postal agency under Gwelo. Post Office 1951"



<http://www.rhodesia.co.za/Images/large/B377.jpg>: "MAKWIRO dc, large part strike dated 31 JUL 1912, on 1d Double Head".

<http://www.rhodesia.co.za/Images/large/RA9610.jpg>: "MALINDI dc, fair strike dated 6 FEB 1911, on 1d Double Head".

<http://www.rhodesia.co.za/Images/large/MBSA29.jpg>: "(MA)RSHBROOK dc, part strike dated 9 MAR 1911, on 1d Double Head on piece".



<http://www.rhodesia.co.za/Images/large/AD419.jpg>: "MATOPOS tc, large part strike dated 3 APR 12, on 1d Double Head".

<http://www.rhodesia.co.za/Images/large/B388.jpg>: "MAZOE dc, crisp large part strike dated 1 MAR 1912, on 1d Double Head".

<http://www.rhodesia.co.za/Images/large/RA9608.jpg>: "MTOKO dc, crisp large part strike dated OCT 1912, on 1d Double Head".



<http://www.rhodesia.co.za/Images/large/RA9620.jpg>: "ODZI dc, large part strike dated 13 SEP 12, on 1d Double Head".

<http://www.rhodesia.co.za/Images/large/B398.jpg>: "(P)EGGY MINE dc, large part crisp strike dated DEC 1911, on 1d Double Head".

<http://www.rhodesia.co.za/Images/large/B401.jpg>: "PLUMTREE dc, almost complete strike dated 5 SEP 11, on 1d Double Head".



<http://www.rhodesia.co.za/Images/large/RA9625.jpg>: "QUEENS MINE dc, large part strike dated 6 JAN 1914, on 1d Double Head".

<http://www.rhodesia.co.za/Images/large/MBSA42.jpg>: "SHAMVA dc, crisp large part strike dated 1 JAN 1911, on 1d Double Head".

<http://www.rhodesia.co.za/Images/large/RA9640.jpg>: "(T). P. O. DOWN [= T.P.O. D(OWN)] dc, part strike dated 7 FEB, on 1d Double Head".



<http://www.rhodesia.co.za/Images/large/RA9605.jpg>: "LEALUI dc, almost complete crisp strike dated 14 NOV 1912, on 1d Double Head".

<http://www.rhodesia.co.za/Images/large/RA9607.jpg>: "MAZABUKA dc, crisp large part strike dated 1 JUL 1913, on 1d Double Head".

<http://www.postmarks.co.za/PH%20Northern%20Rhodesia%20Luwanga%20to%20Mbabala.htm>:
“MAZABUKA,. 1911 to 23.10.1964”.

<http://www.rhodesia.co.za/Images/large/RA9026.jpg>: “MONGU-LEALUI dc, large part strike dated 22
MAY 1913, on 1d Double Head”.

<http://www.postmarks.co.za/PH%20Northern%20Rhodesia%20Mborama%20to%20Mpika.htm>:
“MONGU (MONGU LEALUI). 23.01.1913 to 23.10.1964. Renamed from Lealui”.



[http://www.rhodesianstamps.net/BSAC/Northern_Rhodesia_Postmarks/On_Double_heads/KAFUE.j](http://www.rhodesianstamps.net/BSAC/Northern_Rhodesia_Postmarks/On_Double_heads/KAFUE.jpg)
[pg](http://www.rhodesianstamps.net/BSAC/Northern_Rhodesia_Postmarks/On_Double_heads/KAFUE.jpg): “BSAC 255 KAFUE 15 JUL 1913 - Type 4x”.

[http://www.postmarks.co.za/PH%20Northern%20Rhodesia%20Kabwe%20Mine%20to%20Kalinku.ht](http://www.postmarks.co.za/PH%20Northern%20Rhodesia%20Kabwe%20Mine%20to%20Kalinku.htm)
[m](http://www.postmarks.co.za/PH%20Northern%20Rhodesia%20Kabwe%20Mine%20to%20Kalinku.htm): “KAFUE. 23.02.1907 to 23.10.1964. Sub post office under Lusaka until 1956”.

[http://www.rhodesianstamps.net/BSAC/Northern_Rhodesia_Postmarks/On_Double_heads/KASHITU](http://www.rhodesianstamps.net/BSAC/Northern_Rhodesia_Postmarks/On_Double_heads/KASHITU.jpg)
[.jpg](http://www.rhodesianstamps.net/BSAC/Northern_Rhodesia_Postmarks/On_Double_heads/KASHITU.jpg): “BSAC 260 KASHITU 27 MAR 1913 - Type 4 Rare”.

<http://www.postmarks.co.za/PH%20Northern%20Rhodesia%20Kasenji%20to%20Kashitu.htm>:
“KASHITU. 03.11.1911 to 04.04.1919. 01.09.1924 to 31.10.1926”.

[http://www.rhodesianstamps.net/BSAC/Northern_Rhodesia_Postmarks/On_Double_heads/LUSAKA](http://www.rhodesianstamps.net/BSAC/Northern_Rhodesia_Postmarks/On_Double_heads/LUSAKA_S.jpg)
[S.jpg](http://www.rhodesianstamps.net/BSAC/Northern_Rhodesia_Postmarks/On_Double_heads/LUSAKA_S.jpg): “BSAC 262 LUSAKAS 16 AUG 1912 - Type 4x”.



[http://www.rhodesianstamps.net/BSAC/Northern_Rhodesia_Postmarks/On_Double_heads/SHE SHE](http://www.rhodesianstamps.net/BSAC/Northern_Rhodesia_Postmarks/On_Double_heads/SHE SHE KE.jpg)
[KE.jpg](http://www.rhodesianstamps.net/BSAC/Northern_Rhodesia_Postmarks/On_Double_heads/SHE SHE KE.jpg): “BSAC 270 SHESHEKE 23 OCT 11 Type 4sw Scarce “

[http://www.rhodesianstamps.net/BSAC/Southern_Rhodesia_Postmarks/On_Double_heads/KIMBER](http://www.rhodesianstamps.net/BSAC/Southern_Rhodesia_Postmarks/On_Double_heads/KIMBERLEY REEFS.jpg)
[LEY REEFS.jpg](http://www.rhodesianstamps.net/BSAC/Southern_Rhodesia_Postmarks/On_Double_heads/KIMBERLEY REEFS.jpg): “BSAC 635 KIMBERLEY REEFS Type 13x – Scarce”.

<http://www.postmarks.co.za/PH%20Southern%20Rhodesia%20Karoo%20to%20Lalapamzi.htm>:
“KIMBERLEY REEFS. 15.11.1908 to 13.01.1913. Renamed Bindura”.

[http://www.rhodesianstamps.net/BSAC/Southern_Rhodesia_Postmarks/On_Double_heads/MAKOW](http://www.rhodesianstamps.net/BSAC/Southern_Rhodesia_Postmarks/On_Double_heads/MAKOWRIES.jpg)
[RIES.jpg](http://www.rhodesianstamps.net/BSAC/Southern_Rhodesia_Postmarks/On_Double_heads/MAKOWRIES.jpg): “BSAC 639 MAKOWRIES JY 14 13 - Type 10. Rare”.



http://www.rhodesianstamps.net/BSAC/Southern_Rhodesia_Postmarks/On_Double_heads/MATOP_OS.jpg: "BSAC 645 MATOPOS 17 JUL 12 - OD Flaw - Type 12x Scarce".

http://www.rhodesianstamps.net/BSAC/Southern_Rhodesia_Postmarks/On_Double_heads/MOUNT_SELINDA.jpg: "BSAC 648 MOUNT SELINDA 11 MY 12 - Type 6".

http://www.rhodesianstamps.net/BSAC/Southern_Rhodesia_Postmarks/On_Double_heads/MREWA.jpg: "BSAC 649 MREWA 21 JAN 1911 - Type 13x".



http://www.rhodesianstamps.net/BSAC/Southern_Rhodesia_Postmarks/On_Double_heads/SIBALI.jpg: "BSAC 667 SIBALI 18 JAN 1912 - Type 13 Rare".

http://www.rhodesianstamps.net/BSAC/Southern_Rhodesia_Postmarks/On_Double_heads/UMBOE.jpg: "BSAC 677 UMBOE Type 13 Scarce".

http://www.rhodesianstamps.net/BSAC/Southern_Rhodesia_Postmarks/On_Double_heads/ZIMBABWE.jpg: "BSAC 684 ZIMBABWE 1 NOV 13 - Type 13 - Rare".



[http://www.rhodesianstamps.net/BSAC/S.R. Postmark collection on Double heads/MOUNT_DARWIN.jpg](http://www.rhodesianstamps.net/BSAC/S.R._Postmark_collection_on_Double_heads/MOUNT_DARWIN.jpg): "MOUNT DARWIN".

<http://www.postmarks.co.za/images/Chilanga%201913.jpg>: "CHILANGA 01.01.1913 to 31.03.1913..."

<http://www.postmarks.co.za/images/Chipongwe%201912.jpg>: "CHIPONGWE 1908 to 31.12.1912..."



<http://www.postmarks.co.za/images/Feira%201912%202.jpg>: "FEIRA. 30.04.1902 to 01.08.1933...On the confluence of the Zambesi and Luangwa River / "N.W.RHODESIA." [earlier: N.E. Rhodesia, see 1896].

<http://www.postmarks.co.za/images/Fundu%20N.%20Rhod.jpg>: "FUNDU. 26.02.1912 to 07.09.1916".

<http://www.postmarks.co.za/images/Kawambwa%201914.jpg>: "KAWAMBWA. June 1908 to 23.10.1964. Using Kalunguisi Postmark until 23.12.1912".



<https://i.ebayimg.com/thumbs/images/g/6roAAOSwLEtYIF6T/s-l225.jpg>: "RHODESIA SOUTH HELVETIA POSTMARK DOUBLE HEAD 1912".

<http://www.postmarks.co.za/images/Luwingu%201913.jpg>: "LUWINGU 06.12.1912 to 23.10.1964. Postal agency under Kasama".

<http://www.postmarks.co.za/images/Magoye%201911.jpg>: "MAGOYE 18.10.1911 to 31.12.1926..."



<http://www.postmarks.co.za/images/Chibi%202.jpg>: "CHIBI. 27.03.1912 to 10.09.1954. Postal agency under Fort Victoria".

<http://www.postmarks.co.za/images/GWaaI%202.jpg>: "GWAAI (SIDING). 18.02.1907 to 29.11.1917...Postal Agency under Wankie"

<http://www.postmarks.co.za/images/Indarama%202.jpg>: "INDARAMA. 15.08.1908 to 01.03.1914. Postal agency under Hartley".



http://www.rhodesianstamps.net/BSAC/Postal_Stationery/Envelope_with_Sibali_skeleton.jpg: "BSAC 831 H&G 2b 1d Envelope with additional 1d Double Head to Bulawayo - Cancelled by extremely rare Skeleton SIBALI MY 11 with Bulawayo Station & Bulawayo 6 May backstamps. The only known example of this cancel".

<http://www.michael-hamilton.com/images/RHOD48391.jpg>: "SIBALI, S. RHODESIA postmark (D4) 25 JUL 1912 on 1d DH.".



<http://www.michael-hamilton.com/images/RHOD53647.jpg>: “SHANGANI, Rhodesia postmark (D3) NO 9 12 on 1d DH, thinned lower right corner area”.

<http://www.michael-hamilton.com/images/RHOD16443.jpg>: “ABERCORN, Northern Rhodesia postmark (D3) dated 11 DEC 11 on 1d DH, thin top left corner, slight horiz. crease.”.

<http://www.gbimperf.org/sb/T14931/NDOLA.jpg> Cancelled NDOLA.



[http://www.rhodesianstamps.net/BSAC/Southern Rhodesia Postmarks/On Double heads/Barred Diamond A.jpg](http://www.rhodesianstamps.net/BSAC/Southern_Rhodesia_Postmarks/On_Double_heads/Barred_Diamond_A.jpg): “BSAC 688 Barred Diamond A Type 2 - Used at Salisbury”.

<http://www.rhodesia.co.za/Images/large/RA9642.jpg>: “‘B’ strike on 1d Double Head on piece” [= Bulawayo].

[http://www.rhodesianstamps.net/BSAC/Southern Rhodesia Postmarks/On Double heads/Cork cancel\(1\).jpg](http://www.rhodesianstamps.net/BSAC/Southern_Rhodesia_Postmarks/On_Double_heads/Cork_cancel(1).jpg): “BSAC 691 CORK Cancel - Potatoe shape 1d Perforation 13½”.



<https://i.ebayimg.com/thumbs/images/g/iuUAAOSw9sJzrPp6/s-l225.jpg>: “Rhodesia 1910 Double Head 1d MAHALAPYE SIDING Postmark”.

2p grey and black (Mi 103a) and grey and violet (Mi 103b)



http://www.rhodesianstamps.net/BSAC/1910_Double_Heads/SG126_mint.jpg

<http://www.rhodesia.co.za/Images/large/MDH604.jpg>: "black and slate-grey, long gash headplate. Fine used cancelled 'GADZEMA 15 MAY 11. SG 128'".

<http://www.rhodesia.co.za/Images/large/RA9086.jpg>: "black and grey, long gash headplate. Very fine used cancelled crisp 'BATTLEFIELDS MINE 16 DEC 10' tc datestamp. SG 126'".



<http://www.rhodesia.co.za/Images/large/MDH191.jpg>: "black and grey-black (ghostly heads), short gash headplate. Fine used cancelled 'ESSEXVALE OCT 1914' datestamps. RSC B".

<http://www.rhodesia.co.za/Images/large/RA5468.jpg>: "black and brownish grey, thick ear headplate. Vertical pair superb used cancelled with crisp 'SALISBURY 17 JAN 13' datestamp. Scarce. RSC A".



<http://www.rhodesia.co.za/Images/large/RA8219.jpg>: “black and grey-black, (clean) thick ear headplate. Very fine used cancelled 'UMVUMA 11 FEB 1911' datestamp. RSC D”.

<http://www.rhodesia.co.za/Images/large/RA9081.jpg>: “black-purple and slate-grey, long gash headplate. Hinge trace if at all, very fine mint. SG 127”.



<http://www.rhodesia.co.za/Images/large/MDH387.jpg>: “deep black and grey-black, no gash headplate. Very fine used cancelled part 'UMSWESWE' datestamp at right. RSC F”.

<http://www.rhodesia.co.za/Images/large/MDH190.jpg>: “black and slate-black, thick ear headplate. Superb used cancelled crisp 'BUSHTICK 29 APR 1914' datestamp. RSC J”.

<http://www.postmarks.co.za/PH%20Southern%20Rhodesia%20Bulawayo%20Station%20to%20Chin%20Mine.htm> : “BUSHTICK. 31.03.1911 to 01.01.1929...Umzingwane District”

<http://www.rhodesia.co.za/Images/large/RA8246.jpg>: “EIFFEL FLATS dc, crisp large part strike dated 15 JUL 1912, on 2d Double Head (RSC D)”.

<http://www.postmarks.co.za/PH%20Southern%20Rhodesia%20Eastlea%20to%20Famona.htm> : “EIF[F]EL FLATS. 16.10.1911 to 10.11.1965. Gatooma District”.



<http://www.rhodesia.co.za/Images/large/RA8260.jpg>: “WEST NICHOLSON dc, bold large part strike dated 27 MAY 1917, on 2d Double Head”.

2 1/2p ultramarine (Mi 104a), and blue (Mi 104b)



http://www.rhodesianstamps.net/BSAC/1910_Double_Heads/SG131_mint.jpg: "SG 131. 2½d Ultramarine".

http://www.rhodesianstamps.net/BSAC/1910_Double_Heads/SG131a_mint.jpg: "SG 131a 2½d Bright-ultramarine".

http://www.rhodesianstamps.net/BSAC/1910_Double_Heads/SG132_mint.jpg: "SG 132. 2½d Chalky-blue".

3p olive yellow and lilac (Mi 105a), and dark yellow and lilac (Mi 105b)



http://www.rhodesianstamps.net/BSAC/Colour_trials_plate%20proofs_Specimens/Rhodesia_Waterlow_sample_Specimen_detail.jpg



http://www.rhodesianstamps.net/BSAC/1910_Double_Heads/SG134_mint.jpg: "SG 134. 3d Purple & ochre".

http://www.rhodesianstamps.net/BSAC/1910_Double_Heads/SG135_mint.jpg: "SG 135. 3d Purple & yellow-ochre".

http://www.rhodesianstamps.net/BSAC/1910_Double_Heads/SG136_used.jpg: "SG 136. 3d Magenta & yellow ochre".



http://www.rhodesianstamps.net/BSAC/1910_Double_Heads/SG136_variety_used.jpg: "3d . Double Head Variety. BSAC 81. SG 136 . 3d Magenta & yellow ochre. With variety horizontal lines of shading to the left of the Queen are extended. Across the frame & into the margin . Cancelled BULAWAYO AUG 13".

http://www.rhodesianstamps.net/BSAC/1910_Double_Heads/SG136_variety.jpg



<http://thumbs.ebaystatic.com/images/g/xX0AAOSwmfhX5JEz/s-l225.jpg> Cancelled BROKEN HILL

<http://www.postmarks.co.za/images/Fort%20Roseberry%201914.jpg>: "FORT ROSEBERY. 23.08.1901 to 23.10.1964". Also see 1898: "859".

4p orange and dark brown (Mi 106a), and orange and black (Mi 106b)



http://www.rhodesianstamps.net/BSAC/1910_Double_Heads/SG140_mint.jpg: "SG 140. 4d Black & orange".

http://www.rhodesianstamps.net/BSAC/1910_Double_Heads/SG138_used.jpg: "SG 138. 4d Greenish black & orange".

http://www.rhodesianstamps.net/BSAC/1910_Double_Heads/SG139_used.jpg: "SG 139. 4d
Brown purple & orange".



<http://www.rhodesia.co.za/Images/large/B518.jpg>: "GATOOMA dc, large part strike dated
27 MAY 1911, on 4d Double Head".

<http://www.rhodesia.co.za/Images/large/RA5746.jpg>: "NYAMANDSHLOVU dc part strike
dated 15 JAN, on 4d Double Head".

<http://www.rhodesia.co.za/Images/large/RA8242.jpg>: "PAULINGTON dc, crisp almost
complete strike dated 4 NOV 1911, on 4d Double Head (RSC E, colour loss)".

5p green olive and red brown (Mi 107a), and yellow and red brown (Mi 107b)



http://www.rhodesianstamps.net/BSAC/1910_Double_Heads/SG141_mint.jpg: "SG 141. 5d
Purple-brown & olive green".

http://www.rhodesianstamps.net/BSAC/1910_Double_Heads/SG141a_mint.jpg: "SG 141a.
5d Purple-brown & olive yellow".

http://www.rhodesianstamps.net/BSAC/1910_Double_Heads/SG141ab_mint.jpg: "SG
141ab. 5d Reddish brown & Olive bistre".



http://www.rhodesianstamps.net/BSAC/1910_Double_Heads/SG143_used.jpg: "SG 143. 5d RSC 'C' Lake brown & yellow olive".

6p lilac brown (Mi 108)



http://www.rhodesianstamps.net/BSAC/1910_Double_Heads/SG144_mint.jpg: "SG 144. 6d Red brown & mauve".

http://www.rhodesianstamps.net/BSAC/1910_Double_Heads/SG145_used.jpg: "SG 145. 6d Brown & purple". Cancelled GWELO.

http://www.rhodesianstamps.net/BSAC/1910_Double_Heads/SG145a_used.jpg: "SG 145a. 6d Bright chestnut & mauve".



http://www.rhodesianstamps.net/BSAC/1910_Double_Heads/SG145a_shade_used.jpg: "SG 145a. 6d Chestnut & deep mauve". Cancelled BULAWAYO

<http://www.rhodesia.co.za/Images/large/B363.jpg>: "JUMBO MINE dc, almost complete strike dated 29 NOV 1913, on 6d Double Head".

<http://www.postmarks.co.za/PH%20Southern%20Rhodesia%20Inyoka%20to%20Kariba.htm>: "JUMBO (MINE). 01.04.1904 to 30.04.1919...Postal agency under Mazoe".

<http://www.rhodesia.co.za/Images/large/B460.jpg>: FORT JAMESON dc, fair large part strike date unclear, on 6d Double Head (RSC H) ".



<http://www.rhodesia.co.za/Images/large/MBSA48.jpg>: "A' (Salisbury), on 6d Double Head, faults:.

8p dark lilac and black (Mi 109a), and violet and grey (Mi 109b)



https://tbn.bidorbuy.co.za/image/fetch/dpr_1.0,f_auto,t_btbnx/https://img.bidorbuy.co.za/image/upload/v1487406316/user_images/057/1600057/170218102513_scan9.jpg

http://www.rhodesianstamps.net/BSAC/1910_Double_Heads/SG147_used.jpg: "SG 147. 8d Dull purple & purple". Cancelled BULAWAYO.

http://www.rhodesianstamps.net/BSAC/1910_Double_Heads/SG148_used.jpg: "SG 148. 8d Greenish black & purple".

10p violet brown and orange red (Mi 110)



http://www.rhodesianstamps.net/BSAC/1910_Double_Heads/SG149_mint.jpg: "SG 149. 10d Scarlet & reddish mauve".

http://www.rhodesianstamps.net/BSAC/1910_Double_Heads/SG150_used.jpg: "SG 150. 10d Carmine & deep purple". Cancelled BULAWAYO.

1Sh green blue and black (Mi 111)



http://www.rhodesianstamps.net/BSAC/1910_Double_Heads/SG151_mint.jpg: "SG 151. 1/- Grey-black & dp. blue-green".

http://www.rhodesianstamps.net/BSAC/1910_Double_Heads/SG152_used.jpg: "SG 152. 1/- Black & pale blue green".



<http://www.rhodesia.co.za/Images/large/MBSA115.jpg>: "CHIN MINE dc, large part strike dated 23 APR 1913, on 1/- Double Head".

<http://www.postmarks.co.za/PH%20Southern%20Rhodesia%20Bulawayo%20Station%20to%20Chin%20Mine.htm> : "CHIN MINE. 27.04.1912 to 05.07.1917. Situated in the Chilimanzi District".

2Sh violet blue and black (Mi 112)



http://www.rhodesianstamps.net/BSAC/1910_Double_Heads/SG153_mint.jpg: "SG 153. 2/- Black & ultramarine".

http://www.rhodesianstamps.net/BSAC/1910_Double_Heads/SG154_used.jpg: "SG 154. 2/- Black & dull blue". Cancelled SALISBURY.



[http://www.rhodesianstamps.net/BSAC/Fiscals Revenues/Double Head 2s Fiscal.jpg](http://www.rhodesianstamps.net/BSAC/Fiscals_Revenues/Double_Head_2s_Fiscal.jpg):

“BSAC 130. SG 154. 2/- Black & Ultramarine. Fiscally used . Date Perfin . 26 7 12”.

2Sh 6p carmin red and black (Mi 113)



[http://www.rhodesianstamps.net/BSAC/1910 Double Heads/SG155a mint.jpg](http://www.rhodesianstamps.net/BSAC/1910_Double_Heads/SG155a_mint.jpg): “SG 155a. 2/6 Black & crimson”. Cancelled SALISBURY.

[http://www.rhodesianstamps.net/BSAC/1910 Double Heads/SG156a used.jpg](http://www.rhodesianstamps.net/BSAC/1910_Double_Heads/SG156a_used.jpg): “SG 156a. 2/6 Bistre brown & crimson . Rounded SW corner”.

3Sh purple and green (Mi 114)



http://www.rhodesianstamps.net/BSAC/1910_Double_Heads/SG158_mint.jpg: "SG 158. 3/-
Green & violet".

5Sh green and carmin (Mi 115)



http://images.bidorbuy.co.za/user_images/313/1391313/1391313_130718123855_Rhod_1910_5s_roulette.JPG

http://www.rhodesianstamps.net/BSAC/1910_Double_Heads/SG160_used.jpg: "SG 160. 5/-
Scarlet & yellow green". Cancelled BULAWAYO.

http://www.rhodesianstamps.net/BSAC/1910_Double_Heads/SG160a_used.jpg: "SG 160a.
5/- Crimson & yellow green". Cancelled SALISBURY.

7Sh 6p blue and red (Mi 116)



http://www.rhodesianstamps.net/BSAC/1910_Double_Heads/SG160b_mint.jpg: "SG 160b.
7/6 Carmine & pale-blue".

http://www.rhodesianstamps.net/BSAC/1910_Double_Heads/SG161_mint.jpg: "SG 161. 7/6
Carmine & light-blue".



https://tbn.bidorbuy.co.za/image/fetch/dpr_1.0,f_auto,t_btbnx/http://img.bidorbuy.co.za/image/upload/user_images/062/2033062/2033062_150907213311_4.jpg: "1910 7/6 SG 162 CARMINE AND BRIGHT BLUE BRITISH SOUTH AFRICA COMPANY."

10Sh orange and green (Mi 117)



http://www.rhodesianstamps.net/BSAC/1910_Double_Heads/SG163_mint.jpg: "SG 163. 10/- Deep Myrtle & orange".

http://www.rhodesianstamps.net/BSAC/1910_Double_Heads/SG164_used.jpg: "SG 164. 10/- Blue Green & Orange".

1£ blue grey and carmin red (Mi 118a), and violet and carmin (Mi 118b)



<http://thumbs.ebaystatic.com/images/g/CM8AAOSwepZXRgi7/s-l225.jpg>: "Rhodesia KGV 1910-13 P14 £1 the rare shade superb MLH SG 166b CV".

<http://catalogue.klaseboer.com/vol1/html/brcol/rhod117.jpg>



[http://www.rhodesianstamps.net/BSAC/1910_Double_Heads/SG165_used\(1\).jpg](http://www.rhodesianstamps.net/BSAC/1910_Double_Heads/SG165_used(1).jpg): "SG 165. £1 Carmine red & bluish black".

[http://www.rhodesianstamps.net/BSAC/1910_Double_Heads/SG165_used\(2\).jpg](http://www.rhodesianstamps.net/BSAC/1910_Double_Heads/SG165_used(2).jpg): "SG 165 Shade. £1 Scarlet red & blue black". Cancelled SALISBURY.

http://www.rhodesianstamps.net/BSAC/1910_Double_Heads/SG166a_used.jpg: "SG 166a. £1 Crimson red & slate black".

II 1910 Double Heads Perforation 15



http://www.rhodesianstamps.net/BSAC/1910_Double_Heads/SG168_used.jpg: "SG 168. ½d Yellow green". Cancelled BULAWAYO.

http://www.rhodesianstamps.net/BSAC/1910_Double_Heads/SG170_used.jpg: "SG 170. 1d Carmine".

<http://www.midphil.com/images/15378%20I-N.jpg>: "British South Africa Company: 1910-13, 2d black & grey-black, Perf 15. SG 171. Very fine used.".



http://www.rhodesianstamps.net/BSAC/1910_Double_Heads/SG172_used.jpg: "SG 172. 2½d Ultramarine". Cancelled SALISBURY.

http://www.rhodesianstamps.net/BSAC/1910_Double_Heads/SG173_used.jpg: "SG 173. 3d Purple & yellow ochre". Cancelled BULAWAYO.



<http://www.midphil.com/images/170542.jpg>: "British South Africa Company: 1910-13, 4d black & orange, Perf 15. SG 174. Mounted mint."



http://www.rhodesianstamps.net/BSAC/1910_Double_Heads/SG175_used.jpg: "SG 175. 5d Lake brown & olive".

http://www.rhodesianstamps.net/BSAC/1910_Double_Heads/SG176_used.jpg: "SG 176. 6d Brown & mauve".



http://www.rhodesianstamps.net/BSAC/1910_Double_Heads/SG176_variety_used.jpg: "6d Double Head Variety. BSAC 82. SG 176 . 6d Perforation 15 ex Plate 2 - With variety Extended frame line On SW corner. Used at GWELO".

http://www.rhodesianstamps.net/BSAC/1910_Double_Heads/SG176_variety.jpg



http://www.rhodesianstamps.net/BSAC/1910_Double_Heads/SG177_used.jpg: "SG 177. 1/- Black & blue green".

http://www.rhodesianstamps.net/BSAC/1910_Double_Heads/SG178_mint.jpg: "SG 178. 2/- Black & dull blue".



<http://www.rhodesia.co.za/Images/large/RA9604.jpg>: "LONELY MINE dc, large part strike dated 15 SEP 1913, on 1d Double Head perf. 15".

<http://www.postmarks.co.za/PH%20Southern%20Rhodesia%20Lancaster%20to%20Mabelreign.htm>: "LONELY MINE. 15.05.1911 to 10.11.1965. Postal agency under Turk Mine".

III 1910 Double Heads Perforation 13½



http://www.rhodesianstamps.net/BSAC/1910_Double_Heads/SG182a_used.jpg: "SG 182a. ½d Green".

http://www.rhodesianstamps.net/BSAC/1910_Double_Heads/SG183_used.jpg: "SG 183. 1d Bright carmine". Cancelled BULAWAYO.



http://www.rhodesia.co.za/images/thumbnails/RA9572_tn.jpg: "ANTELOPE MINE dc, almost complete strike dated 31 OCT 12, on 1d Double Head perf. 15".

http://www.rhodesia.co.za/images/thumbnails/RA8351_tn.jpg: "ARCTURUS P.O. dc, good almost complete strike dated 19 DEC 1912, on 1d Double Head p15".



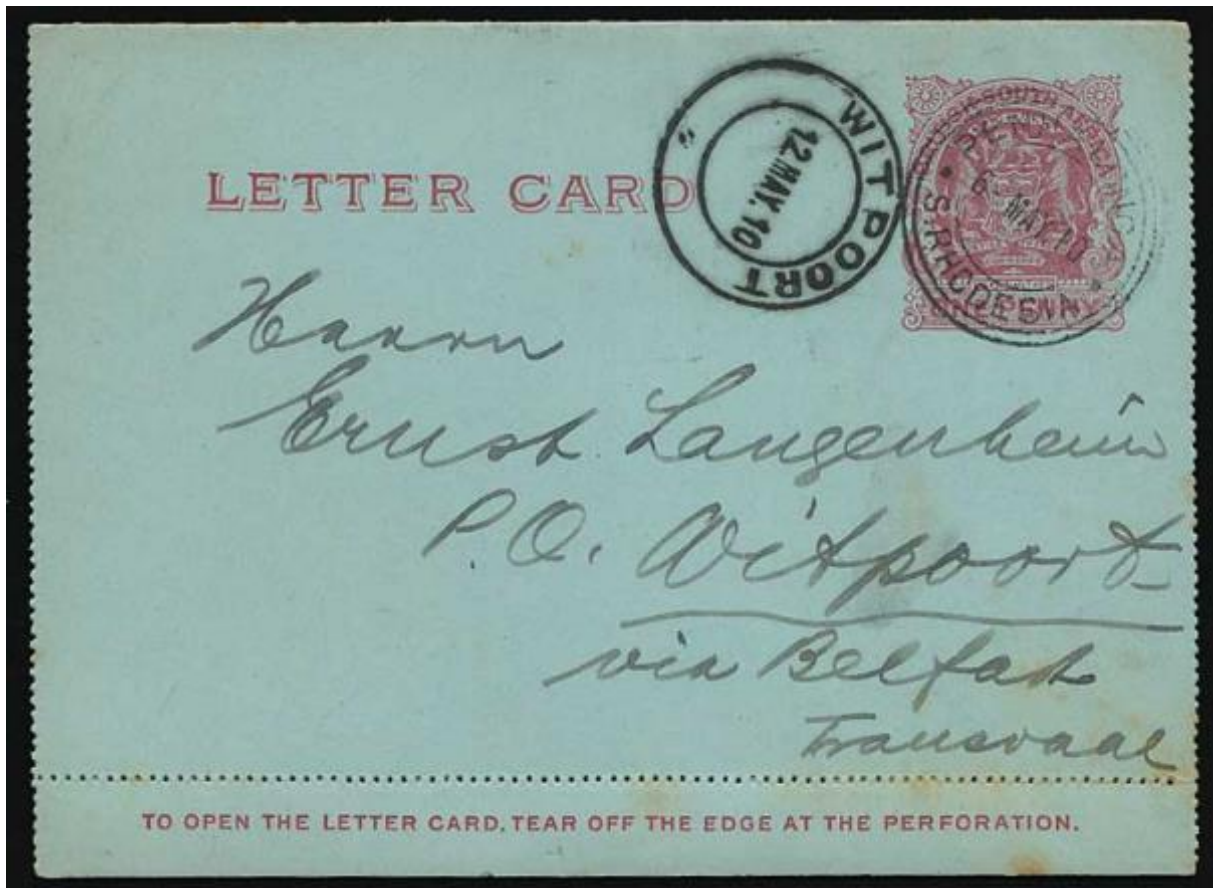
http://www.rhodesianstamps.net/BSAC/1910_Double_Heads/SG184_used.jpg: "SG 184. 2½d Ultramarine".



http://www.rhodesianstamps.net/BSAC/1910_Double_Heads/SG185_used.jpg: "SG 185. 8d Black & purple".

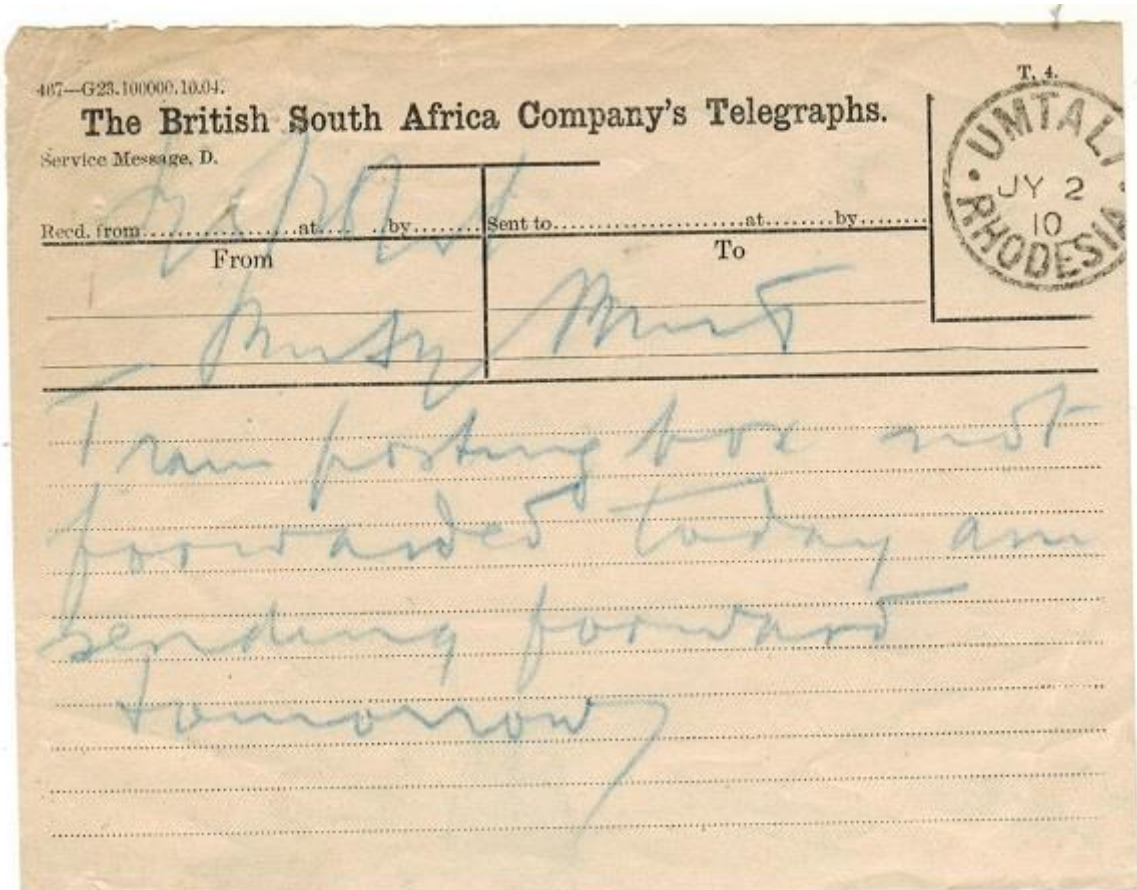
http://www.rhodesianstamps.net/BSAC/1910_Double_Heads/SG185a_used.jpg: "SG 185a. 8d Grey purple & dull purple".

1910 Stationery: letter card



<http://www.rhodesia.co.za/Images/large/B209.jpg>: "1910 6th May, 1d large Arms Letter Card red on pale blue, cancelled with tc 'PENHALONGA / S. RHODESIA' datestamp to the Transvaal. 'BULAWAYO STATION', 'PRETORIA' transit strikes on reverse and 'WITPOORT' arrival strike on front. Some staining but a scarce card used. H&G A1".

1910 Telegraph forms used in BSAC area



<http://www.stevedrewett.com/images/11925.jpg> : "RHODESIA - 1910 TELEGRAM form used at UMTALI."

1913 King George V, "Admirals"; perforation 14 and 15

1/2p green (M119)



<http://www.midphil.com/images/170544.jpg> : "British South Africa Company: 1913-22, ½d bright green, Perf 14. SG 189. Mounted mint."

[http://www.rhodesianstamps.net/BSAC/1913 Admirals/SG202 used.jpg](http://www.rhodesianstamps.net/BSAC/1913_Admirals/SG202_used.jpg) : "SG 202. ½d Blue-green".
Single plates Perforation 15

https://encrypted-tbn0.gstatic.com/images?q=tbn:ANd9GcS7Q2CUXUtZhTC4fnEsNrva0mjiVijTeavtM-gTWP_PYgitstnH1w



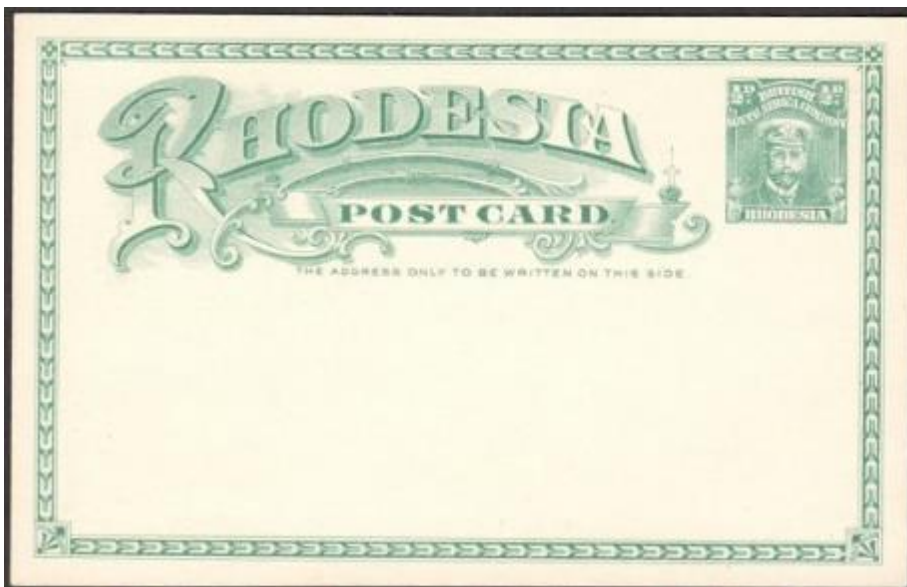
<http://www.rhodesia.co.za/Images/large/MBSA21.jpg>: “INORO dc, part strike, on ½d Admiral”.

<http://www.postmarks.co.za/PH%20Southern%20Rhodesia%20Hillside%20to%20Inoro.htm> : “INORO. 19.09.1913 to 30.09.1931. 30 km from Marandellas “.

http://www.rhodesianstamps.net/BSAC/Northern_Rhodesia_Postmarks/KASAMA.jpg: “BSAC 313 KASAMA 30 JAN 22 Type 11z – Scarce”.

http://www.rhodesianstamps.net/BSAC/Northern_Rhodesia_Postmarks/NDOLA.jpg: “BSAC 340 NDOLA 13 OCT 1920 Type 4x”.

http://www.rhodesianstamps.net/BSAC/Northern_Rhodesia_Postmarks/SHESHEKE.jpg: “PMK 344 SHESHEKE 16 JUL 1918 Type 7A”.



http://www.rhodesianstamps.net/BSAC/Postal_Stationery/Postcard_H&G_14.jpg: “BSAC 810 - H&G 14. 1913 Admiral ½d Yellow green – Scarce Mint”.



[http://www.rhodesianstamps.net/BSAC/Postal Stationery/Envelope H&G 4.jpg](http://www.rhodesianstamps.net/BSAC/Postal_Stationery/Envelope_H&G_4.jpg): "BSAC 814
- H&G 4 1913 ½d Admiral, size b 137 : 79 Mint".



<http://www.postmarks.co.za/images/Headlands%20cover.jpg>: "HEADLANDS
30.09.1898 to 10.11.1965. Postal agency under Salisbury". Also see 1905.

1p carmin red (M120)



http://www.rhodesianstamps.net/BSAC/1913_Admirals/SG192_umm.jpg: "SG 192, 1d Brown red".
Single plates Perforation 14

http://www.rhodesianstamps.net/BSAC/1913_Admirals/SG204_used.jpg: "SG 204. 1d Rose red".
Single plates perforation 15. Canceled SELUKWE.

http://www.rhodesianstamps.net/BSAC/1913_Admirals/SG205_mint.jpg: "SG 205. 1d Brown red".
Single plates Perforation 15.

<https://s-media-cache-ak0.pinimg.com/originals/4d/27/2c/4d272c5111824952ce338512bd90a3ef.jpg>



<http://www.rhodesia.co.za/Images/large/B456.jpg>: "CHOMA dc, large part strike dated 25 FEB 1925, on pair 1d Admirals".

<http://www.postmarks.co.za/PH%20Northern%20Rhodesia%20Chisekesi%20to%20Feira.htm>: "CHOMA. 09.04.1907 to 23.10.1964".

<http://www.rhodesia.co.za/Images/large/B260.jpg>: "KAWAMBWA / NTH (RHOD)ESIA dc, crisp almost complete strike dated 16 MAY 1921, on rejoined pair 1d Admirals".



[http://www.rhodesianstamps.net/BSAC/Northern Rhodesia Postmarks/CHINSALI.jpg](http://www.rhodesianstamps.net/BSAC/Northern_Rhodesia_Postmarks/CHINSALI.jpg):

“BSAC 302 CHINSALI SEP 19 Type 5s”.

[http://www.rhodesianstamps.net/BSAC/Northern Rhodesia Postmarks/CHIWEFWE.jpg](http://www.rhodesianstamps.net/BSAC/Northern_Rhodesia_Postmarks/CHIWEFWE.jpg):

“BSAC 304 CHIWEFWE 11 NOV 1918 - Type 11tx Two complete strikes on the day WWI ended Two other examples known”. www.postmarks.co.za: “CHIWEFWE 1916 to 1919. Near Mkushi”.

[http://www.rhodesianstamps.net/BSAC/Northern Rhodesia Postmarks/SERENJE.jpg](http://www.rhodesianstamps.net/BSAC/Northern_Rhodesia_Postmarks/SERENJE.jpg): PMK

343 SERENJE 29 JAN 1919 Type 7B “



[http://www.rhodesianstamps.net/BSAC/Northern Rhodesia Postmarks/MAZABUKA.jpg](http://www.rhodesianstamps.net/BSAC/Northern_Rhodesia_Postmarks/MAZABUKA.jpg):

“BSAC 330 MAZABUKA 29 JAN 1924 Type 11t”.

[http://www.rhodesianstamps.net/BSAC/Northern Rhodesia Postmarks/LUSAKAS.jpg](http://www.rhodesianstamps.net/BSAC/Northern_Rhodesia_Postmarks/LUSAKAS.jpg):

“BSAC 326 LUSAKAS 2 FEB 1922 - Dent in outer arc Type 4x – Scarce”.



[http://www.rhodesianstamps.net/BSAC/Southern Rhodesia Postmarks/On Admirals/BEATRICE MINE.jpg](http://www.rhodesianstamps.net/BSAC/Southern_Rhodesia_Postmarks/On_Admirals/BEATRICE_MINE.jpg): “BSAC 704 BEATRICE MINE 2 AUG 1920 - Type 13”.

<http://www.postmarks.co.za/PH%20Southern%20Rhodesia%20Abercorn%20to%20Beatrice.htm>: “BEATRICE (MINE). Postal agency in the Hartley District. Open: 07.10.1911 to 10.11.1965”.

[http://www.rhodesianstamps.net/BSAC/Southern Rhodesia Postmarks/On Admirals/GWAINDA.jpg](http://www.rhodesianstamps.net/BSAC/Southern_Rhodesia_Postmarks/On_Admirals/GWAINDA.jpg): “BSAC 725 GREAT ZIMBABWE APR 1915 - Type 13x. Scarce”.

<http://www.postmarks.co.za/PH%20Southern%20Rhodesia%20Glenville%20to%20Gwaai%2>

[0Settlement.htm](#): "GREAT ZIMBABWE. 15.06.1914 to 12.04.1947. Postal Agency under Fort Victoria. Renamed from Zimbabwe".

[http://www.rhodesianstamps.net/BSAC/Southern Rhodesia Postmarks/On Admirals/NORTON.jpg](http://www.rhodesianstamps.net/BSAC/Southern_Rhodesia_Postmarks/On_Admirals/NORTON.jpg) : "BSAC 756 NORTON 23 MAR 1915 Type 13.1".



<https://www.picclickimg.com/d/l400/pict/351797545293/Rhodesia-Admiral-1d-with-KASHITU-postmark.jpg>: "Rhodesia Admiral 1d with KASHITU postmark".

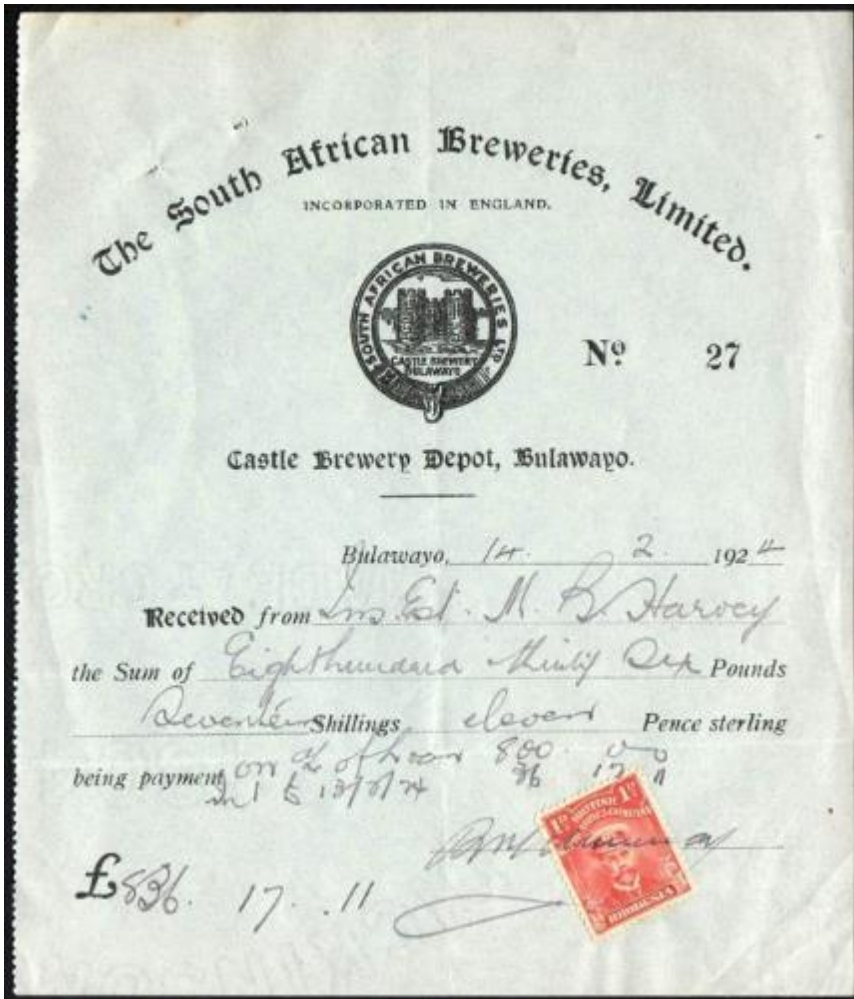
<http://www.postmarks.co.za/images/Chibuzana.jpg>: "CHIBUZANA. 26.01.1921 to 31.12.1934. Situated in the Melsetter District".



<http://www.postmarks.co.za/images/De%20Kocks%201915.jpg>: "DEKOCKS. 01.05.1915 to 1921. Marandellas District".



[http://www.rhodesianstamps.net/BSAC/Postal History/Rhodesia Admirals on cover from Mazabuka.jpg](http://www.rhodesianstamps.net/BSAC/Postal_History/Rhodesia_Admirals_on_cover_from_Mazabuka.jpg): "BSAC 883 Cut down envelope to England with Admirals 1d x 4 deep Rosine shade Cancelled MAZABUKA 15 APR 1917 Livingstone 17 APR Transit backstamp Item a little battered which does not detract".



[http://www.rhodesianstamps.net/BSAC/Fiscals Revenues/Document with 1d Admiral.jpg](http://www.rhodesianstamps.net/BSAC/Fiscals%20Revenues/Document%20with%201d%20Admiral.jpg):
"Admiral 1d used for Receipt purpose. BSAC 165. Brewery Receipt for £836.17.11. Settled on 14 February 1924 at Bulawayo with 1d Admiral . Usage during the interim period after start of Self Government on 1 October 1923".



http://www.rhodesianstamps.net/BSAC/Postal_Stationery/Envelope_H&G_5.jpg: "BSAC 815 - H&G 5 (variation) 1913 1d Admiral, size 124 : 97 with embossing under flap Mint".

1 1/2p yellow brown (M121)



http://www.rhodesianstamps.net/BSAC/1913_Admirals/SG197_mint.jpg: "SG 197. 1½d Brown-ochre". Single plates Perforation 14

http://www.rhodesianstamps.net/BSAC/1913_Admirals/SG198_mint.jpg: "SG 198. 1½d Bistre brown". Single plates Perforation 14

http://www.rhodesianstamps.net/BSAC/1913_Admirals/SG197a_mint.jpg: "BSAC 96. SG 197a. 1½d Brown ochre. Imperforate between".



<https://s-media-cache-ak0.pinimg.com/236x/42/a5/31/42a53155881e5e0c5a69c41e31c0a145.jpg>

<https://i.pinimg.com/236x/12/f5/e3/12f5e31956c071d8fd06e39ae1e6205d--south-africa-lwren-scott.jpg>

<http://www.rhodesia.co.za/Images/large/MBSA15.jpg>: "GLENDALE S(TATION) dc, crisp large part strike dated 11 MAR 20, on 1½d Admiral".

<http://www.postmarks.co.za/PH%20Southern%20Rhodesia%20Gatooma%20to%20Glengarry.htm> : "GLENDALE (STATION). 13.01.1915 to 10.11.1965. Postal agency under Salisbury".

http://www.rhodesianstamps.net/BSAC/Southern_Rhodesia_Postmarks/On_Admirals/FELIXBURG.jpg: "BSAC 717 FELIXBURG 14 NOV 1922 Type 13x".

<http://www.postmarks.co.za/PH%20Southern%20Rhodesia%20Featherstone%20to%20Gathurs%20Mine.htm> : "FELIXBURG. 01.03.1906 to 01.11.1964. Postal agency under Enkeldoorn".



http://www.rhodesianstamps.net/BSAC/Southern_Rhodesia_Postmarks/On_Admirals/HEADLANDS.jpg: "BSAC 728 HEADLANDS 21 DEC 19 - Type 7w".

http://www.rhodesianstamps.net/BSAC/Southern_Rhodesia_Postmarks/On_Admirals/HUNTERS_ROAD.jpg: "BSAC 730 HUNTERS ROAD MAR 1920 - Type 13".

<http://www.postmarks.co.za/PH%20Southern%20Rhodesia%20Hillside%20to%20Inoro.htm> : "HUNTERS ROAD. 01.11.1911 to 10.11.1965. Postal agency under Gwelo".

http://www.rhodesianstamps.net/BSAC/Southern_Rhodesia_Postmarks/On_Admirals/MAS_HABA.jpg: "BSAC 744 MASHABA 29 DEC 1922 - Type 13".



<http://www.postmarks.co.za/images/Dunphale%20Siding.jpg>: “DUNPHAILE SIDING
23.11.1919 to 26.01.1921. Postal agency under Sinoia”.



http://www.rhodesianstamps.net/BSAC/1913_Admirals/SG206_mint.jpg: “SG 206. 1½d
Bistre brown”. Single plates. Perforation 15.



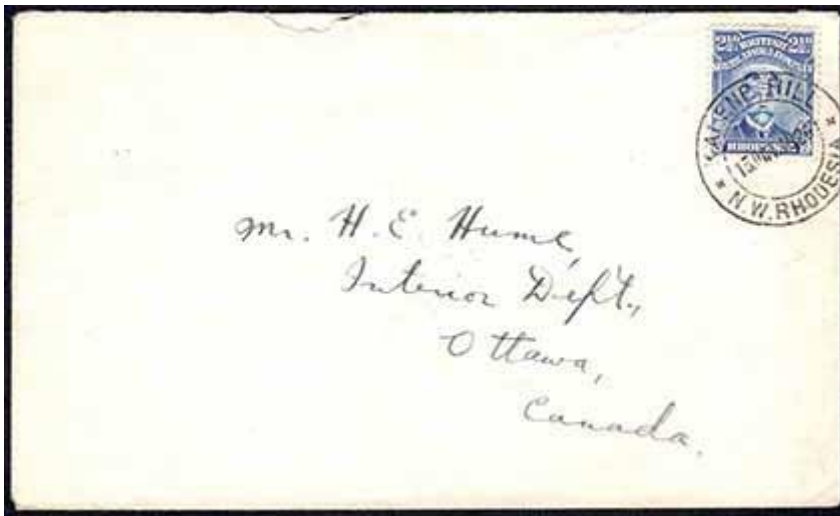
http://www.rhodesianstudycircle.org.uk/wordpress/wp-content/uploads/2016/01/785267055_o-300x197.jpg . Cancelled BULAWAYO.

<http://www.rhodesianstamps.net/BSAC/1913 Admirals/SG201 used.jpg>: "SG 201. 2½d Bright blue". Single plates Perforation 14

<http://www.rhodesianstamps.net/BSAC/1913 Admirals/SG207 mint.jpg>: "SG 207. 2½d Deep blue". Single plates Perforation 15

<http://www.rhodesianstamps.net/BSAC/1913 Admirals/SG208 mint.jpg>: "SG 208. 2½d Bright blue". Single plates Perforation 15.

<http://www.rhodesianstamps.net/BSAC/1913 Admirals/SG208 used.jpg>: "SG 208. 2½d Bright blue. Single plates Perforation 15.". Cancellation [KA]FUE



<http://www.rhodesianstamps.net/BSAC/Postal History/Rhodesia 1920 cover from Kalene Hill.jpg>: "BSAC 880 Envelope to Ottawa in Canada With correct 2½d Foreign rate - Cancelled KALENE HILL 15 OCT 1920 A very rare cancel on cover taken by Runner Post to Broken Hill, with a LUSAKAS 5 NOV 1920 transit backstamp. A three week period required for this part of its journey".

Idem, new values, three types

2p brown black and grey (Mi 123 I and II, and III)



http://www.rhodesianstamps.net/BSAC/1913_Admirals/SG209_mint.jpg: "SG 209. 2d Black & grey".
Die I, Perf 14.

Die II: no illustration yet

http://www.rhodesianstamps.net/BSAC/1913_Admirals/SG256_used.jpg: "SG 256. 2d Grey black. Die
III - Perforation 14". Cancelled ABERCORN.

http://www.rhodesianstamps.net/BSAC/1913_Admirals/SG279c_used.jpg: "SG 279c 2d Black &
brownish grey . Die III Perf 15". Cancelled BULAWAYO.



<https://i.ebayimg.com/thumbs/images/g/SdkAAOSwmfhX5JUD/s-l225.jpg> Cancelled
BULAWAYO

http://www.rhodesianstamps.net/BSAC/Northern_Rhodesia_Postmarks/CHISAMBA.jpg:
"BSAC 303 [CHI]SAMBA Type 9t - Part strike".



[http://www.rhodesianstamps.net/BSAC/Northern_Rhodesia_Postmarks/FORT_ROSEBERY.jp](http://www.rhodesianstamps.net/BSAC/Northern_Rhodesia_Postmarks/FORT_ROSEBERY.jpg)
g: "BSAC 307 FORT ROSEBERY 4 MAY 1923 Type 11t".

http://www.rhodesianstamps.net/BSAC/Northern_Rhodesia_Postmarks/MONZE_30_JAN.jp
g: "BSAC 334 MONZE 30 JAN 192 A last year digit omitted Type 7
". [http://www.postmarks.co.za/PH%20Northern%20Rhodesia%20Mborama%20to%20Mpika.](http://www.postmarks.co.za/PH%20Northern%20Rhodesia%20Mborama%20to%20Mpika.htm)
[htm](http://www.postmarks.co.za/PH%20Northern%20Rhodesia%20Mborama%20to%20Mpika.htm): "MONZE. June 1901 to 31.03.1902. 31.12.1912 to 31,12.1917. 01.12.1920 to
23.10.1964. 180km south of Lusaka".

http://www.rhodesianstamps.net/BSAC/Northern_Rhodesia_Postmarks/PETAUKE.jpg:

“BSAC 342 PETAUKE 3 JUL 21 - Type 11s Scarce”.

<https://i.ebayimg.com/images/g/dV0AAOSwqfNXnSFd/s-l300.jpg> Cancelled MWINILUNGA.



<http://www.postmarks.co.za/images/Bulawayo%201918%20Index%20A.jpg>

<http://www.postmarks.co.za/images/Bulawayo%20Station%201923.jpg>: “BULAWAYO STATION. 1898 to closed by March 1900. 18.06.1904 to 12.10.1948”.

3p yellow and black (Mi 124I and II, and III)



http://www.rhodesianstamps.net/BSAC/1913_Admirals/SG210_mint.jpg: “SG 210. 3d Black & yellow. Admirals - Die I - Perforation 14”.

http://www.rhodesianstamps.net/BSAC/1913_Admirals/SG215_used.jpg: “SG 215. 3d Black & yellow. Die I . Perforation 15”.

http://www.rhodesianstamps.net/BSAC/1913_Admirals/SG222_mint.jpg: “SG 222. 3d Black & yellow. Admirals - Die II - Perforation 14”.

<http://thumbs.ebaystatic.com/images/g/ym0AAOSwnFZXXmml/s-l225.jpg>



[http://www.rhodesianstamps.net/BSAC/1913 Admirals/SG223_used.jpg](http://www.rhodesianstamps.net/BSAC/1913_Admirals/SG223_used.jpg): "SG 223 3d Black & buff. Admirals - Die II - Perforation 14".

[http://www.rhodesianstamps.net/BSAC/1913 Admirals/SG259_mint.jpg](http://www.rhodesianstamps.net/BSAC/1913_Admirals/SG259_mint.jpg): "SG 259. 3d Black & yellow. Die III - Perforation 14".

[http://www.rhodesianstamps.net/BSAC/1913 Admirals/SG260_used.jpg](http://www.rhodesianstamps.net/BSAC/1913_Admirals/SG260_used.jpg): "SG 260. 3d Black & ochre. Die III - Perforation 14".

<http://www.rhodesia.co.za/Images/large/MBSA7.jpg>: "CONCESSION RAIL dc, crisp part strikes dated 20 SEP 1922, on 3d Admiral".

<http://www.postmarks.co.za/PH%20Southern%20Rhodesia%20Chipinga%20to%20Coro%20Park.htm>: "CONCESSION (RAIL) 01.12.1917 to 07.11.1928 ... Mazoe District. Renamed to Amandas in 1928. Renamed from Amandas on 02.06.1935".

4p red orange and black (Mi 125I and II, and III)



[http://www.rhodesianstamps.net/BSAC/1913 Admirals/SG211_mint.jpg](http://www.rhodesianstamps.net/BSAC/1913_Admirals/SG211_mint.jpg): "SG 211. 4d orange-red. Admirals - Die I - Perforation 14".

[http://www.rhodesianstamps.net/BSAC/1913 Admirals/SG216_mint.jpg](http://www.rhodesianstamps.net/BSAC/1913_Admirals/SG216_mint.jpg): "SG 216. 4d Orange red. Die I Perforation 15".



<http://www.rhodesianstamps.net/BSAC/1913 Admirals/SG224 used.jpg>: "SG 224. 4d Orange-red. Admirals - Die II - Perforation 14". Cancelled GWELO.

<http://www.rhodesianstamps.net/BSAC/1913 Admirals/SG225 mint.jpg>: "SG 225. 4d Deep orange-red. Admirals - Die II - Perforation 14".

<http://www.rhodesianstamps.net/BSAC/1913 Admirals/SG245 used.jpg>: "SG 245. 4d Black & orange. Die II - Perforation 15". Cancelled BULAWAYO.

<https://i.ebayimg.com/thumbs/images/g/XZgAAOSwmfhX5JXB/s-l225.jpg>



<http://www.rhodesianstamps.net/BSAC/1913 Admirals/SG261 used.jpg>: "SG 261. 4d Orange red. Die III - Perforation 14".

<http://www.rhodesianstamps.net/BSAC/1913 Admirals/SG262 used.jpg>: "SG 262 . 4d Black & dull red. Die III - Perforation 14".

5p green and black (Mi 126I and II, and III)



[http://www.rhodesianstamps.net/BSAC/1913 Admirals/SG212_mint.jpg](http://www.rhodesianstamps.net/BSAC/1913_Admirals/SG212_mint.jpg): "SG 212. 5d Black & green. Admirals - Die I - Perforation 14".

[http://www.rhodesianstamps.net/BSAC/1913 Admirals/SG226_used.jpg](http://www.rhodesianstamps.net/BSAC/1913_Admirals/SG226_used.jpg): "SG 226. 5d Grey green. Admirals - Die II - Perforation 14".

[http://www.rhodesianstamps.net/BSAC/1913 Admirals/SG227_used.jpg](http://www.rhodesianstamps.net/BSAC/1913_Admirals/SG227_used.jpg): "SG 227. 5d Bright green. Admirals - Die II - Perforation 14".



[http://www.rhodesianstamps.net/BSAC/1913 Admirals/SG263_used.jpg](http://www.rhodesianstamps.net/BSAC/1913_Admirals/SG263_used.jpg): "SG 263. 5d Pale green. Die III – Perf 14".

[http://www.rhodesianstamps.net/BSAC/1913 Admirals/SG264_used.jpg](http://www.rhodesianstamps.net/BSAC/1913_Admirals/SG264_used.jpg): "SG 264. 5d Black & green. Die III – Perf 14". Cancelled HARTLEY.

<https://i.ebayimg.com/thumbs/images/g/AzkaaOSwqBJXXmvd/s-l225.jpg>

Ebay, no further information. Cancelled SHAMVA.

6p lilac and black (Mi 127I and II, and III)



[http://www.rhodesianstamps.net/BSAC/1913 Admirals/6d_specimen.jpg](http://www.rhodesianstamps.net/BSAC/1913_Admirals/6d_specimen.jpg)

[http://www.rhodesianstamps.net/BSAC/1913 Admirals/SG213_used.jpg](http://www.rhodesianstamps.net/BSAC/1913_Admirals/SG213_used.jpg): "SG 213. 6d Black & mauve. Admirals - Die I - Perforation 14".

[http://www.rhodesianstamps.net/BSAC/1913 Admirals/SG217_mint.jpg](http://www.rhodesianstamps.net/BSAC/1913_Admirals/SG217_mint.jpg): "SG 217. 6d Mauve. Die I . Perforation 15".

[http://www.rhodesianstamps.net/BSAC/1913 Admirals/SG229_used.jpg](http://www.rhodesianstamps.net/BSAC/1913_Admirals/SG229_used.jpg): "SG 229. 6d Purple". Admirals - Die II - Perforation 14".



[http://www.rhodesianstamps.net/BSAC/1913 Admirals/SG265_used.jpg](http://www.rhodesianstamps.net/BSAC/1913_Admirals/SG265_used.jpg): "SG 265. 6d Reddish mauve. Die III – Perf 14".

[http://www.rhodesianstamps.net/BSAC/1913 Admirals/SG266_used.jpg](http://www.rhodesianstamps.net/BSAC/1913_Admirals/SG266_used.jpg): "SG 266. 6d Dull mauve. Die III – Perf 14". Cancelled SALISBURY

8p green and black (Mi 128II, and III)



[http://www.rhodesianstamps.net/BSAC/1913 Admirals/SG230_mint.jpg](http://www.rhodesianstamps.net/BSAC/1913_Admirals/SG230_mint.jpg): "SG 230. 8d Violet & Green. Admirals - Die II - Perforation 14".

[http://www.rhodesianstamps.net/BSAC/1913 Admirals/SG246_mint.jpg](http://www.rhodesianstamps.net/BSAC/1913_Admirals/SG246_mint.jpg): "SG 246. 8d Violet & green. Die II - Perforation 15".

<https://s-media-cache-ak0.pinimg.com/236x/ac/51/93/ac5193c3852659bb7d170cecf9163730--postage-stamps-south-africa.jpg>



<http://www.midphil.com/images/170561.jpg>: "British South Africa Company: 1913-22, 8d mauve & dull blue-green, Perf 14. SG 267. Mounted mint."

[http://www.rhodesianstamps.net/BSAC/1913 Admirals/SG268_used\(1\).jpg](http://www.rhodesianstamps.net/BSAC/1913_Admirals/SG268_used(1).jpg): "SG 268. 8d Greenish blue. Die III. Perf 14". Cancelled MAZOE.

10p red and dark blue (Mi 129II, and III)



[http://www.rhodesianstamps.net/BSAC/1913 Admirals/SG231_mint.jpg](http://www.rhodesianstamps.net/BSAC/1913_Admirals/SG231_mint.jpg): "SG 231 . 10d Shade Ult. & carmine. Admirals - Die II - Perforation 14".

[http://www.rhodesianstamps.net/BSAC/1913 Admirals/SG231_used.jpg](http://www.rhodesianstamps.net/BSAC/1913_Admirals/SG231_used.jpg): "SG 231.10d Blue & carm red. Admirals - Die II - Perforation 14".

[http://www.rhodesianstamps.net/BSAC/1913 Admirals/SG247_mint.jpg](http://www.rhodesianstamps.net/BSAC/1913_Admirals/SG247_mint.jpg): "SG 247. 10d Blue & red. Die II - Perforation 15".



[http://www.rhodesianstamps.net/BSAC/1913 Admirals/SG269_mint.jpg](http://www.rhodesianstamps.net/BSAC/1913_Admirals/SG269_mint.jpg): "SG 269. 10d Indigo & carmine. Die III – Perf 14".

[http://www.rhodesianstamps.net/BSAC/1913 Admirals/SG269_shade_mint.jpg](http://www.rhodesianstamps.net/BSAC/1913_Admirals/SG269_shade_mint.jpg): "SG 269 Shade. 10d Deep carmine. Die III – Perf 14".

[http://www.rhodesianstamps.net/BSAC/1913 Admirals/SG270_used.jpg](http://www.rhodesianstamps.net/BSAC/1913_Admirals/SG270_used.jpg): "SG 270. 10d Blue & red. Die III – Perf 14". Cancelled SALISBURY.

1Sh green blue and black (Mi 130II, and III)



http://www.rhodesianstamps.net/BSAC/1913 Admirals/SG232_mint.jpg: "SG 232. 1/- Greenish blue. Admirals - Die II - Perforation 14".

http://www.rhodesianstamps.net/BSAC/1913 Admirals/SG233_mint.jpg: "SG 233. 1/- Turquoise blue. Admirals - Die II - Perforation 14".

http://www.rhodesianstamps.net/BSAC/1913 Admirals/SG248_mint.jpg: "SG 248 . 1/- Black & greenish blue. Die II - Perforation 15".



http://www.rhodesianstamps.net/BSAC/1913 Admirals/SG271_mint.jpg: "SG 271. 1/- Greenish blue. Die III – Perf 14".

http://www.rhodesianstamps.net/BSAC/1913 Admirals/SG272_used.jpg: SG 272. 1/- Pale blue green. Die III – Perf 14".

<http://www.midphil.com/images/170566.jpg>: "British South Africa Company: 1913-22, 1/- black & light blue, Perf 14. SG 272a. Mounted mint.".

http://www.rhodesianstamps.net/BSAC/1913 Admirals/SG272b_used.jpg: "SG 272b. 1/- Black & green. Die III – Perf 14".



<http://thumbs.ebaystatic.com/images/g/EkoAAOSwcUBYSV71/s-l225.jpg>

<http://www.rhodesia.co.za/Images/large/B454.jpg> :” CHILANGA dc, large part strike dated 17 FEB, on 1/- Admiral”.



<http://www.rhodesia.co.za/Images/large/RA5103.jpg>: “1915 printed two page ‘DEED OF TRANSFER’, dated 29th January 1915, inner page bearing 1898 5/- Arms, 1909 £1 Arms overprinted ‘RHODESIA’ and 1/- Admiral (SG 87, 113, 248), perfined by date and violet oval cancel.”.

2Sh brown and black (Mi 131I and II, and III)



http://www.rhodesianstamps.net/BSAC/1913_Admirals/2s_specimen.jpg

http://www.rhodesianstamps.net/BSAC/1913_Admirals/SG214_mint.jpg: "SG 214. 2/- Black & brown. Admirals - Die I - Perforation 14".

http://www.rhodesianstamps.net/BSAC/1913_Admirals/SG218_mint.jpg: "SG 218. 2/- Black & brown. Die I . Perforation 15".



http://www.rhodesianstamps.net/BSAC/1913_Admirals/SG234_mint.jpg: "SG 234. 2/- black & brown. Admirals - Die II - Perforation 14".

http://www.rhodesianstamps.net/BSAC/1913_Admirals/SG235_used.jpg: "SG 235. 2/- Yellow brown. Admirals - Die II - Perforation 14".

http://www.rhodesianstamps.net/BSAC/1913_Admirals/SG273_used.jpg: "SG 273. 2/- Black & brown. Die III – Perf 14".

http://www.rhodesianstamps.net/BSAC/1913_Admirals/SG273a_used.jpg: "SG 273a. 2/- Yellow brown. Die III – Perf 14".



[http://i.ebayimg.com/00/s/NzlwWDYyOQ==/z/ki0AAOSwmfhX5Jdp/\\$_12.JPG](http://i.ebayimg.com/00/s/NzlwWDYyOQ==/z/ki0AAOSwmfhX5Jdp/$_12.JPG) . Canceled BULAWAYO.

2Sh 6p grey brown and blue (Mi 132II, and III)



http://www.rhodesianstamps.net/BSAC/1913_Admirals/SG236_mint.jpg: "SG 236. 2/6 Indigo. Admirals - Die II - Perforation 14".

http://www.rhodesianstamps.net/BSAC/1913_Admirals/SG236a_used.jpg: "SG 236a. 2/6 Pale blue. Admirals - Die II - Perforation 14".

http://www.rhodesianstamps.net/BSAC/1913_Admirals/SG249_mint.jpg: "SG 249. 2/6 Indigo. Die II - Perforation 15".

http://www.rhodesianstamps.net/BSAC/1913_Admirals/SG249_variety_mint.jpg: "BSAC 99. SG 249. 2/6 Head plate shift up & to the right".



<http://www.midphil.com/images/170568.jpg>: "British South Africa Company: 1913-22, 2/-6d deep ultramarine & grey-brown, Perf 14. SG 274. Mounted mint."

[http://www.rhodesianstamps.net/BSAC/1913 Admirals/SG274a used.jpg](http://www.rhodesianstamps.net/BSAC/1913_Admirals/SG274a_used.jpg): "SG 274a. 2/6 Pale blue. Die III. Perf 14". Cancelled GREAT ZIMBABWE.

<https://i.ebayimg.com/thumbs/images/g/dE0AAOSwjL5ZC3oi/s-l225.jpg>. Cancelled LIVINGSTONE.

3Sh blue and brown (Mi 133II, and III)



[http://www.rhodesianstamps.net/BSAC/1913 Admirals/SG236b mint.jpg](http://www.rhodesianstamps.net/BSAC/1913_Admirals/SG236b_mint.jpg): "SG 236b 3/- Brown & blue. Admirals - Die II - Perforation 14".

[http://www.rhodesianstamps.net/BSAC/1913 Admirals/SG237 mint.jpg](http://www.rhodesianstamps.net/BSAC/1913_Admirals/SG237_mint.jpg): "SG 237. 3/- Chestnut & blue. Admirals - Die II - Perforation 14".

[http://www.rhodesianstamps.net/BSAC/1913 Admirals/SG274b mint.jpg](http://www.rhodesianstamps.net/BSAC/1913_Admirals/SG274b_mint.jpg): "SG 274b. 3/- Chestnut. Die III - Perf. 14".



<https://i.ebayimg.com/thumbs/images/g/-dUAAOSw0HFZnj6Z/s-l225.webp> : “

RHODESIA - 1913 Admiral 3/- P14 DIEIII on piece (fiscally used) (ME166)”.

5Sh green and blue (Mi 134II, and III)



http://www.rhodesianstamps.net/BSAC/1913 Admirals/SG239_mint.jpg: “SG 239. 5/- Blue & blue green. Admirals - Die II - Perforation 14”.

http://www.rhodesianstamps.net/BSAC/1913 Admirals/SG251_mint.jpg: “SG 251. 5/- Blue & yellow green. Die II - Perforation 15”.

http://www.rhodesianstamps.net/BSAC/1913 Admirals/SG275_mint.jpg: “SG 275. 5/- Dp blue & blue green. Die III – Perf. 14”.

http://www.rhodesianstamps.net/BSAC/1913 Admirals/SG276_used.jpg: “SG 276. 5/- Blue & yellow green. Die III – Perf. 14”.

7Sh 6p black and lilac (Mi 135II, and III)



[http://www.rhodesianstamps.net/BSAC/1913 Admirals/SG240_mint.jpg](http://www.rhodesianstamps.net/BSAC/1913_Admirals/SG240_mint.jpg): "SG 240. 7/6 Slate black. Admirals - Die II - Perforation 14".

[http://www.rhodesianstamps.net/BSAC/1913 Admirals/SG240_variety_mint.jpg](http://www.rhodesianstamps.net/BSAC/1913_Admirals/SG240_variety_mint.jpg): "BSAC 97 . SG 240 . 7/6 Die II Perforation 14. Severe offset of vignette . Creates the illusion that the top right portion of the cap has been omitted. A striking item".

https://encrypted-tbn0.gstatic.com/images?q=tbn:ANd9GcQuqixbXFDt2zfCl2kSJQ7O7EPulg0M5du5aCfmb_Vf-zRgijEi7g

10Sh green and carmin red (Mi 136II, and III)



[http://www.rhodesianstamps.net/BSAC/1913 Admirals/SG241_mint.jpg](http://www.rhodesianstamps.net/BSAC/1913_Admirals/SG241_mint.jpg): "SG 241. 10/- Yellow green. Admirals - Die II - Perforation 14".

[http://www.rhodesianstamps.net/BSAC/1913 Admirals/SG277_mint.jpg](http://www.rhodesianstamps.net/BSAC/1913_Admirals/SG277_mint.jpg): "SG 277. 10/- Carmine-lake & yell[ow] green. Die III – Perf. 14".

1£ purple and black (Mi 137IIa, and IIIa), and violet and black (Mi 137IIb, and IIIb)



[http://www.rhodesianstamps.net/BSAC/1913 Admirals/SG242_mint.jpg](http://www.rhodesianstamps.net/BSAC/1913_Admirals/SG242_mint.jpg): “SG 242. £1 Black & purple. Admirals - Die II - Perforation 14”.

[http://www.rhodesianstamps.net/BSAC/1913 Admirals/SG243_mint.jpg](http://www.rhodesianstamps.net/BSAC/1913_Admirals/SG243_mint.jpg): “SG 243. £1 Black & deep-purple. Admirals - Die II - Perforation 14”.



<https://i.ebayimg.com/thumbs/images/g/rLYAAOSwSIBYxqlf/s-l225.jpg>

<https://encrypted-tbn0.gstatic.com/images?q=tbn:ANd9GcSZfkox6TRNAK9wSEMZXU2IR6GcXCcEaYidhi-q745BTFOS5ar>

<https://i.ebayimg.com/thumbs/images/g/e1kAAOSw0axZhu4K/s-l225.jpg> : “GV 1913/19 SG279b RHODESIA £1 BLACK & DEEP VIOLET USED WITH PEN CANCEL”.

1917, new value, two types

1/2p on 1 p carmin red (Mi 138I and II, only valid in Northern Rhodesia).



[http://www.rhodesianstamps.net/BSAC/1913 Admirals/SG280_mint.jpg](http://www.rhodesianstamps.net/BSAC/1913_Admirals/SG280_mint.jpg): “Admirals 1917 Livingstone Provisionals. SG 280. Half Penny on 1d”.

[http://www.rhodesianstamps.net/BSAC/1913 Admirals/SG280c_used\(1\).jpg](http://www.rhodesianstamps.net/BSAC/1913_Admirals/SG280c_used(1).jpg) : “SG 280c Letters n y spaced wider”.

<http://www.midphil.com/images/170193.jpg>: “British South Africa Company: 1917, ½d on 1d rose-carmine, letters 'NN' spaced wider. SG 280/280b. Unmounted mint.”.



[http://www.rhodesianstamps.net/BSAC/1913 Admirals/SG281_used.jpg](http://www.rhodesianstamps.net/BSAC/1913_Admirals/SG281_used.jpg): “SG 281. Half Penny on 1d”.



[http://www.rhodesianstamps.net/BSAC/1913 Admirals/SG281_block_mint.jpg](http://www.rhodesianstamps.net/BSAC/1913_Admirals/SG281_block_mint.jpg): “SG 281. Half Penny on 1d . Block of 4”.

<http://www.postmarks.co.za/images/Bwanamkubwa%201917.jpg>: “BWANAMKUBWA 27.03.1911 to 16.05.1920.Sub post office under Broken Hill”.

1922 Admirals. White paper printings.



[http://www.rhodesianstamps.net/BSAC/1913 Admirals/SG286_used.jpg](http://www.rhodesianstamps.net/BSAC/1913_Admirals/SG286_used.jpg): “1922 White paper printings - Perforation 14. SG 286. 1d Aniline red”.

[http://www.rhodesianstamps.net/BSAC/1913 Admirals/SG287_used.jpg](http://www.rhodesianstamps.net/BSAC/1913_Admirals/SG287_used.jpg): “1922 White paper printings - Perforation 14. SG 287. 1½d Brown ochre”.



<http://www.rhodesianstamps.net/BSAC/1913 Admirals/SG287a used.jpg>: "BSAC 98. SG 287a. 1½d Imperforate between. Cancelled SALISBURY 28 JUN 22".



<http://www.rhodesianstamps.net/BSAC/1913 Admirals/SG293 294 on piece used.jpg>: "1922 White paper printings Double Plates - Perforation 14. SG 293 & 294 x 2. On piece SALISBURY 3 JUN 1922".



<http://www.rhodesianstamps.net/BSAC/1913 Admirals/SG289 mint.jpg>: "1922 White paper printings - Perforation 15. SG 289. 1d Rose-scarlet".

[http://www.rhodesianstamps.net/BSAC/1913 Admirals/SG290_umm.jpg](http://www.rhodesianstamps.net/BSAC/1913_Admirals/SG290_umm.jpg): “1922 White paper printings - Perforation 15. SG 290. 1½d Brown ochre”.

1922 Admirals. White Paper printing. Double Plates - Perforation 14



[http://www.rhodesianstamps.net/BSAC/1913 Admirals/SG291_used.jpg](http://www.rhodesianstamps.net/BSAC/1913_Admirals/SG291_used.jpg): “SG 291. 2d Grey purple”.

[http://www.rhodesianstamps.net/BSAC/1913 Admirals/SG292_used.jpg](http://www.rhodesianstamps.net/BSAC/1913_Admirals/SG292_used.jpg): “SG 292. 2d Slate purple”. Cancelled SALISBURY.



[http://www.rhodesianstamps.net/BSAC/1913 Admirals/SG293_used.jpg](http://www.rhodesianstamps.net/BSAC/1913_Admirals/SG293_used.jpg): “SG 293 . 3d Black & yellow”. Cancelled SALISBURY.

[http://www.rhodesianstamps.net/BSAC/1913 Admirals/SG294_used.jpg](http://www.rhodesianstamps.net/BSAC/1913_Admirals/SG294_used.jpg): “SG 294. 4d Orange vermilion”.

[http://www.rhodesianstamps.net/BSAC/1913 Admirals/SG295_used.jpg](http://www.rhodesianstamps.net/BSAC/1913_Admirals/SG295_used.jpg): “SG 295. 6d Jet black & lilac”.

[http://www.rhodesianstamps.net/BSAC/1913 Admirals/SG296_mint.jpg](http://www.rhodesianstamps.net/BSAC/1913_Admirals/SG296_mint.jpg): “SG 296. 8d Violet & grey grn”.



http://www.rhodesianstamps.net/BSAC/1913 Admirals/SG297_mint.jpg: "SG 297. 10d
Bright Ult".

<http://www.midphil.com/images/170570.jpg>: "British South Africa Company: 1922-24, 10d
bright ultramarine & red, Perf 14. SG 298. Mounted mint."

http://www.rhodesianstamps.net/BSAC/1913 Admirals/SG300_mint.jpg: "SG 300. 1/- Black
& dull blue".

http://www.rhodesianstamps.net/BSAC/1913 Admirals/SG301_used.jpg: "SG 301. 2/- Black
& brown".



http://www.rhodesianstamps.net/BSAC/1913 Admirals/SG302_mint.jpg: "SG 302. 2/6 Ult &
sepia".



http://www.rhodesianstamps.net/BSAC/1913 Admirals/SG304_mint.jpg: "SG 304. 3/- Red
brn & turquoise".

http://www.rhodesianstamps.net/BSAC/1913 Admirals/SG308_umm.jpg: "SG 308. 7/6
Brown purple & slate".

http://www.rhodesianstamps.net/BSAC/1913 Admirals/SG309_mint.jpg: "SG 309. 10/-
Crimson & brt yellow grn".

http://www.rhodesianstamps.net/BSAC/1913 Admirals/SG310_umm.jpg: "SG 310. 10/-
Carmine red & yel-green".



<http://www.rhodesianstamps.net/BSAC/1913 Admirals/SG294 variety mint.jpg>: "BSAC 100. SG 294. Head plate shift up & to the left".

1922 Admirals. White paper printings - Perforation 15



<http://www.rhodesianstamps.net/BSAC/1913 Admirals/SG312 mint.jpg>: "SG 312. 2d Black & slate purple".

<http://www.rhodesianstamps.net/BSAC/1913 Admirals/SG313 umm.jpg>: "SG 313. 4d Orange vermilion".

<http://www.rhodesianstamps.net/BSAC/1913 Admirals/SG314 mint.jpg>: "SG 314. 6d Jet black & lilac".

<http://www.rhodesianstamps.net/BSAC/1913 Admirals/SG315 mint.jpg>: "SG 315. 8d Violet & grey green".



<http://www.rhodesianstamps.net/BSAC/1913 Admirals/SG316 mint.jpg>: "SG 316. 10d Ult. & Car red".

<http://www.rhodesianstamps.net/BSAC/1913 Admirals/SG317 mint.jpg>: "SG 317. 1/- Black & dull blue".

http://www.rhodesianstamps.net/BSAC/1913 Admirals/SG318_mint.jpg: "SG 318. 2/- Black & brown".

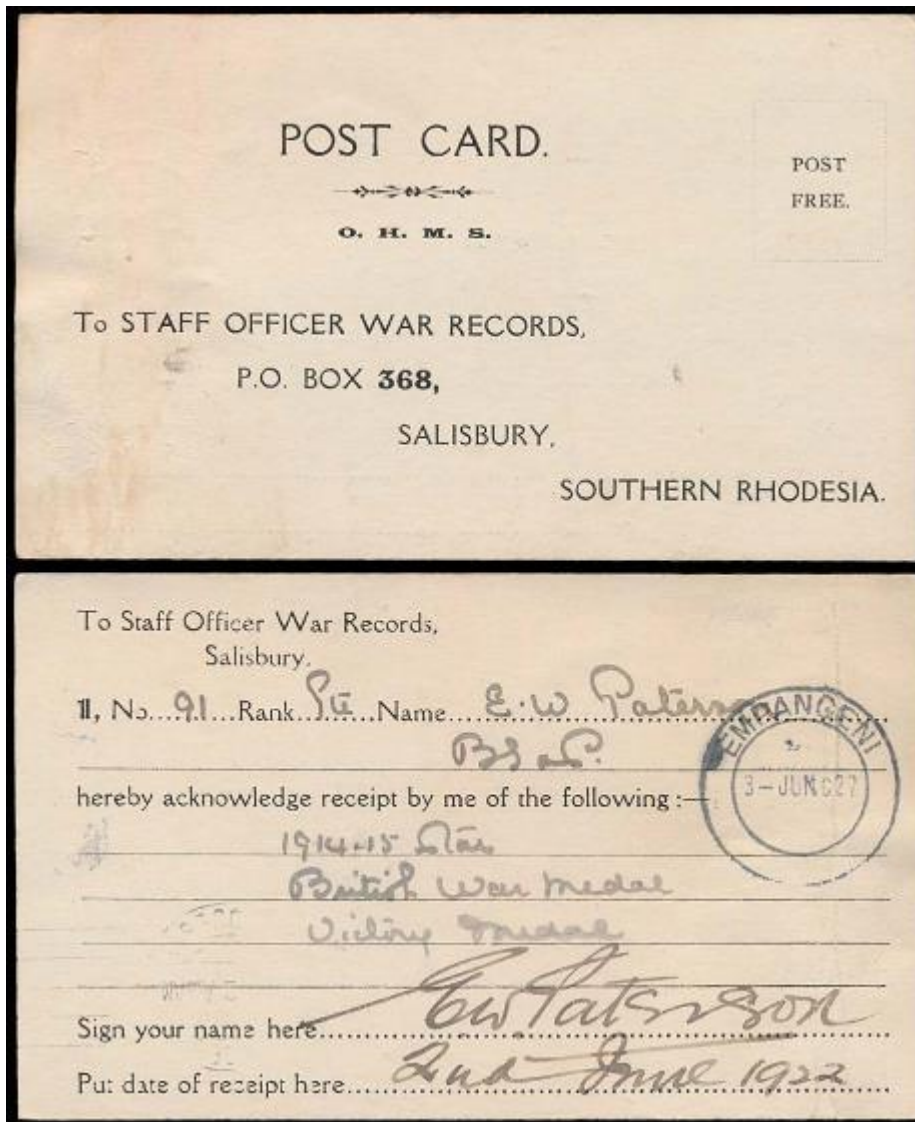
http://www.rhodesianstamps.net/BSAC/1913 Admirals/SG319_mint.jpg: "SG 319. 2/6".



http://www.rhodesianstamps.net/BSAC/1913 Admirals/SG321_mint.jpg: "SG 321. 5/- Blue & green".

http://www.rhodesianstamps.net/BSAC/1913 Admirals/SG322_mint.jpg: "SG 322. £1 Black & magenta".

1922 Post Free Post card



<http://www.rhodesia.co.za/Images/large/MBSA672.jpg>: “1922 3rd June, printed War Records Post Card issued for the return acknowledgement of Medals awarded. Addressed to one E. W. Paterson and apparently sent to him in Zululand. Returned to Salisbury and struck with bold 'EMPANGENI' datestamp. Unusual. “.

Final period of BSAC and BSAC stamps: 1923-1924

See:

http://www.rhodesianstamps.net/The_Rhodesian_Philatelist/01_Collect_Southern_Rhodesia.htm: “The Interim Period - 1st October 1923 to 31st March 1924; The End of the British South Africa Company Era. Collections of Southern and Northern Rhodesia invariably start with their first definitives, issued on 1st April 1924 and 1925 respectively. What many individuals do not take into account is that Southern Rhodesia was granted Self Government on 1st October 1923 and from the 1st April, 1924 Northern Rhodesia was administered by the Imperial Government under the direction of the Colonial Office.

These two dates mark the end of the British South Africa Company's administration in the two territories. Leading up to the above events the British South Africa Company wished to dispose of the remaining stocks of stamps held by the Company in London and as early as July 1923 they had approached certain dealers in England with the view to disposing of their holding. Stanley Gibbons acquired this stock and the first details of the transaction was disclosed in the Stamp Collector's Fortnightly dated 29th March, 1924. This was followed by an explanatory statement by Stanley Gibbons in their April edition of the Monthly Journal. They stated that no remainders of the 1913-22 King's portrait were either offered or available for sale. This is quite understandable as the Admiral issue was still required for postage and revenue purposes in Northern and Southern Rhodesia for an interim period from the end of the BSAC Administration until the issue of new definitives in each Territory. In Southern Rhodesia that period was from 1st October, 1923 to 31st March 1924 and in Northern Rhodesia from 1st April, 1924 to 31st March, 1925. All stamps used between 1st October 1923 and 31st March 1924 may be described as Southern Rhodesia provisionals or forerunners and only examples with readable dates can be placed in such a category. The only stamps that I have encountered, used during the interim period, have been from the Admiral issue. Self-Government took effect on Monday 1st October 1923 with Sir Charles Coghlan as the First Premier. The interim period for B.S.A.C. Admirals was six months and Southern Rhodesia's first definitive was placed on sale Tuesday 1st April 1924. The Admirals were withdrawn on 31st March, 1924 and remained valid for postage for a further month until 30th April, 1924. A further five months of grace was allowed during which time the stamps of the old issue could be exchanged for those of the new issue”.



http://www.rhodesianstamps.net/The_Rhodesian_Philatelist/Collecting_Southern_Rhodesia/01_SR_Interim_Period/02_UMTALI.jpg: “UMTALI. 30 SEP 23. Last day. BSAC Administration”.

http://www.rhodesianstamps.net/The_Rhodesian_Philatelist/Collecting_Southern_Rhodesia/01_SR_Interim_Period/03_WANKIES.jpg: “WANKIES. 1 OCT 1923. First day Self Government”.

http://www.rhodesianstamps.net/The_Rhodesian_Philatelist/Collecting_Southern_Rhodesia/01_SR_Interim_Period/04_GUTU.jpg: “GUTU. 31 MAR 1924. Last day. On Sale”.

<http://www.postmarks.co.za/PH%20Southern%20Rhodesia%20Glenviile%20to%20Gwaii%20Settlement.htm> : “GUTU. 14.08.1911 to 10.11.1965. HQ of Gutu District”.

http://www.rhodesianstamps.net/The_Rhodesian_Philatelist/Collecting_Southern_Rhodesia/01_SR_Interim_Period/05_GWANDA.jpg: "GWANDA . 1 APR 24. Day of Withdrawal".

"Postal validity of the B.S.A.C. Admirals ended on Wednesday 30th April 1924"



http://www.rhodesianstamps.net/The_Rhodesian_Philatelist/Collecting_Southern_Rhodesia/01_SR_Interim_Period/SR%20008%207%20MACHEKE.jpg: "MACHEKE. 28 APR 24".

Continued as Southern Rhodesia (see APH 24), and Northern Rhodesia (see APH 25).

Index of Postmarks British South Africa Company 1892-1924

Postmark	North or South Rhodesia	Year(s) mentioned in illustrations APH 23, And * year started (see note)
Abercorn	N (NE)	1898; 1910; 1913 (*1893 BCA)
Abercorn near Shamva	S	1896 (*1899)
Antelope/Antilope Mine	S	1909; 1910 (*1910)
Anterior Mine	S	1898 (*?)
Arcturus	S	1910 (*1910)
Ayrshire Mine	S	1898; 1905 (*1895)
Balla Balla >Filabusi Siding	S	1898; 1909; 1910 (*1898)
Banket Junction	S	1910 (*1906)
Battlefields Mine	S	1898; 1910 (*?)
Beatrice Mine	S	1913 (*1911)
Belingwe	S	1892; 1897 (*1895)
Bembesi	S	1910 (*1906)
Bindura	S	1910 (*1913). Was Kimberley Reefs.
Blinkwater	S	1898 (*1903)
Bonsor	S	1896 (*1900)
British Association Victoria Falls	S	1905
Broken Hill	N	1898; 1909; 1910 (*1906)
Bromley	S	1896 (*1897)
B.S.A.Camp Bulawayo	S-Matabeleland	1897 (*1896)
Bulawayo /Buluwayo	S-Matabeleland	1892; 1893; "B": 1896, 1896F and 1910; "D": 1896; 1896 CoGH; "E": 1896 and 1898; 1897; 1898; 1904; 1905; 1909; 1910; 1913 (*1894). Was Gubulawayo.
Bulawayo A	S	1913 (*?)
Bulawayo Mines Office	S	1898
Bulawayo Station	S	1913 (*1898)
Bushtick	S	1910 (*1911)
Bwanamkubwa	N (NW)	1909; 1917 (*1911)
Central Bank Ltd (Salisbury)	S	1910
Charter	S	1892; 1896; In 1896 also: "274". (*1892) > Marshbrook.
Chibi	S	1910 (*1912)
Chibuzana	S	1913 (*1921)
Chienji	N (NE)	1897 (*1900) > Chiengi after 1916.

Chilanga	N	1910; 1913 (*1913)
Chin Mine	S	1910 (*1912)
Chinsali	N	1910; 1913 (*1907)
Chipinga	S	1905; 1909 (*1904)
Chipongwe	N (NW)	1910 (*1908)
Chisamba	N	1913 (*1919)
Chiwefwe	N	1913 (*1916)
Choma	N	1913 (*1907)
Colleen Bawn	S	1910 (*1908)
Concession Rail	S	1913 (*1917)
Crocodile Pools	S (Bechuanaland)	1900 (during Boer War)
Dekocks	S	1913 (*1915)
Duchess Hill	S	1910 (*1912)
Dunphaile Siding	S	1913 (*1919)
Eagle Hawk	S	1896; 1898 (*1898)
Eiffel Flats	S	1910 (*1911)
Eldorado Mine	S	1898; 1910 (*1907)
Empangeni	S	1922 (*?)
Enkeldoorn/Enkleidoorn	S	1896 (*1896)
Enterprise	S	1898 (*1899)
Essexvale	S	1909; 1910 (*1904)
Feira	N (NE > NW)	1896; 1910 (*1902)
Felixburg	S	1913 (*1906)
Fife	N (NE)	1895: "F"-"B.C.A."; 1896; 1898; after 1895 N.E. Rhodesia; destroyed during the war with Germany.
Fig tree	S	1892 (*1894)
Filabusi	S	1897 (*1894)
Filabusi Siding	S	1905 (*1905). Was Balla Balla.
Fort Jameson	N (NE)	1892; 1896; 1910 (*1899)
Fort Rixon	S	1898 (*1902)
Fort Rosebery	N (NE)	1892 and 1898 ("859"); 1910; 1913 (*1901)
Francistown	S	1896 (*1897)
Francistown (Tati Excised)	S	1896
Francestown	S (Bechuanaland)	1898
Fundu	N	1910 (*1912)
Gadzema	S	1896; 1910 (*1898)
Gatooma	S	1898; 1910 (*1905)
Geelong	S	1897; 1898 (*1898)
Glendale Station	S	1913 (*1915)
Golden Kopje	S	1910 (*1911)
Golden Valley	S	1898; 1910 (*1907)
Gothic Mine	S	1910 (*1912)

Great Zimbabwe	S	1913 (*1914). Was Zimbabwe.
Gubulawayo	S-Matabeleland	1892 (*1892) > Bulawayo
Gutu	S	1923/24 (*1911)
Gwaai (Siding)	S	1910 (*1907)
Gwanda	S-Matabeleland	1892; 1898; 1910; 1923/24 (*1895)
Gwelo	S	1892; "951": 1892, 1896 and 1897; 1897; 1898; 1910; 1913 (*1894)
Gwelo Mines Office	S	1892; 1896F; 1901F
Hartley	S	1892; 1896; 1896F; 1905; 1913 (*1892)
Headlands	S	1905; 1913 (*1898)
Heany	S	1909; 1910 (*1904)
Hunters Road	S	1913 (*1911)
Indarama	S	1910 (*1908)
Ingwania	S-Matabeleland	1897 (*1895)
Inoro	S	1913 (*1913)
Insiza	S	1896 (*1895)
Insiza Station	S	1898; 1910 (*1895)
Inyanga	S	1898; 1910 (*1897)
Inyati	S	1892; 1898; 1904 (*1895)
Inyazura	S	1905 (*1904)
Iron Mine Hill	S	"312": 1896 and 1898 (*1896)
Joker Mine	S	1909 (*1907)
Jumbo Mine	S	1910 (*1904)
Kafue	N	1910; 1913 (*1907)
Kalanguisi > Kalunguisi	N (NE)	1899 (*1898)
Kalene Hill	N	1910; 1913 (*1907)
Kalomo	N (NW)	1896; 1898 (*1901)
Kalunguisi/Kalungwizi	N (NE)	1897; 1898 (*1898). First under B.C.A.).
Kampanda	N	1896 (*1903)
Kansanshi	N	1909 (*1908)
Kasama (Kasana)	N (NE)	1892; 1896; 1898; 1913 (*1901)
Kasempa	N	1898
Kashitu	N (NW)	1910; 1913 (*1911)
Kawambwa	N	1910; 1913 (*1908/1912)
[Kawimbe]	N	1892 (in 1892)
Kazangula	N	1899 Postmark only (*1899)
Killarney Mine	S	1898 (*1904)
Kimberley Reefs	S	1910 (*1908) > Bindura
Kopje Salisbury	S-Mashonaland	1892; "I": 1895; 1905

		(*1892)
Lalapanzi	S	1910 (*1911)
Lealui > Mongu-Lealui	N (NW)	1898; 1910 (*1900)
Lesapi	S	1892 (*1895): "246". > Rusape
Livingstone Station	N (NW)	1898 (*?)
Livingstone	N (NW)	1898; 1905; 1910; 1913 (*1902)
Lomagundi/ Lomogundi	S	1896; 1897 (*1895)> Sinoia
Lonely Mine	S	1910
Lusakas	N (NW)	1910; 1913
Luwinga	N	1910 (*1912)
Macheke	S	1909; 1923/24
Magoye	N	1910 (*1911)
Mahalapye Siding	S	1910
Makowries	S	1910 > Chatsworth after 1919
Makupekupen	S	1898
Makwiro	S	1910
Malindi	S	1910
Mangwe	S-Matabeleland	1896
Manica Mining	S	1892
Manzan'Nyama	S	1897
Manzimnyama	S	1897
Marandela's	S	1896
Marshbrook	S	1910
Mashaba	S	1913
Matapos	S	1910
Mazabuka	N	1910; 1913 (*1911)
Mazoe	S	1910; 1913
Mazoe Mines Office	S	1901F
Mbanji	S	1898
Melsetter	S	1898; 1905
Mkushi	N (NW)	1898 (*1905)
Mongu-Lealui	N	1910 (*1913) earlier: Lealui
Monze	N	1913 (*1901)
Mount Darwin	S	1910
Mount Selinda	S	1910
Mpika	N	1898; 1909 (*1901)
M'Rewas	S	1898
Mrewa	S	1910
Mtoko	S	1910
Mumbwa	N	1905
Mwinilunga	N	1913
Mwomboshi	N	1896; 1909
Namwala	N	1896; 1898

Ndola	N	1896; 1910; 1913
Nelly Mine	S	1898
Norton	S	1913
Nyamandshlovu	S	1910
Odzi	S	1910
Ortons Drift	S	1897; 1898
Panhalanga	S	1897; 1898
Paquebot	?	1897
Paulington	S	1910
Peggy Mine	S	1910
Pemba	N	1898; 1909
Penhalonga	S	1898; 1905; 1910
Petauke	N	1913
Plumtree	S	1896; 1910
Queens Mine	S	1910
Queque (Kwekwe)	S	1910
Rusape	S	1910
Salisbury	S-Mashonaland	1892; "K": 1892 and 1898; "678": 1892; "827": 1892; 1895; 1896; 1896 CoGH; 1897; 1897 (2P); 1898; 1903; 1903 (Railways); 1905; 1909; 1910; "A": 1910; 1913; 1922 (*1892)
Sebakwe	S	1898
Sebanga Poort	S	1892; 1897
Selukwe	S-Matabeleland	1896; 1898; 1905; 1913
Serenje	N	1913
Shangani	N	1910
Shagari	S	1909; 1910
Shamva	S	1910; 1913
Shesheke	N (NW)	1910; 1913
Sibali	S	1910
Sinoia	S	1904
South Helvetia	S	1910
Tanganyika	N	1892 (B.C.A.)
Tati	S-Matabeleland/British Bechuanaland	1892; 1893; "679": 1895; 1896 (Concessions stamps); 1896 CoGH (*1892)
T.P.O. Down	S	1896F; 1910
T.P.O. Up	S	1910
Tuli	S-Matabeleland	1892; 1896
Turkois Mine	S	1909
Umboe	S	1898; 1903; 1910
Umsheswe	S	1898; 1909; 1910

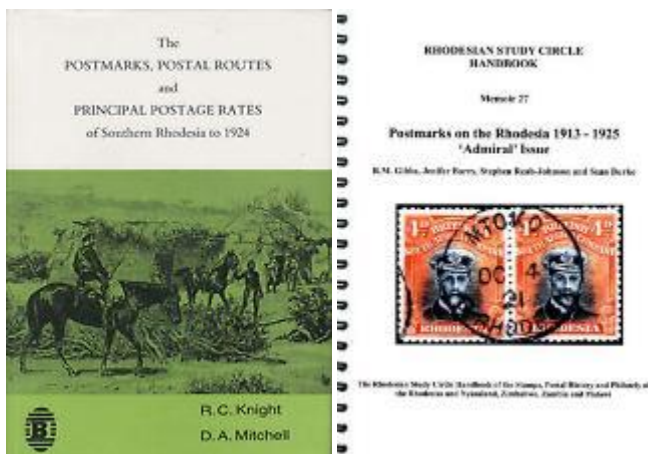
Umtali	S-Mashonaland	1892; "G": 1895; 1896; 1897; 1898; 1904; 1910T; 1923/24 (*1892)
Umvuma	S	1910
Victoria	S-Mashonaland	1896 >Fort Victoria
Victoria Falls	S	1898; 1905
Wankies	S	1905; 1910; 1923/24
West Nicholson	S	1898; 1910
Zimbabwe	S	1910 > Great Zimbabwe in 1914

Note: The information about the start of postal services (and the first postmarks used at a postal station) comes from www.postmarks.co.za. But this source is under construction and is not yet ready. When we prepared APH 23 (in August 2017) they had reached postal stations starting with 'M'.

A Note on Sources:

Of all African postal heritage reconstructions, the British South Africa Company is probably one of the postal agencies best covered on the internet. This is the result of dedicated groups with specialised internet information, like www.postmarks.co.za; www.rhodesia.co.za; and www.rhodesianstamps.net; next to online catalogues (like www.stampworld.com) and internet auction resources like Ebay, Bidorbuy, and others, mentioned in the text. Stamp collectors specialised in 'Rhodesia' have an international (in fact global) organisation, registered in the UK: please see <http://www.rhodesianstudycircle.org.uk/>. We used the Michel Catalogue to indicate each stamp: Michel Katalog Süd- und Zentralafrika 2007, pp. 222-225. Auction houses often use the Stanley Gibbons Catalogue (SG in references), or Scott.

There are a few books about BSAC stamps (and Rhodesia in general), e.g.:



<https://i.ebayimg.com/thumbs/images/g/AS4AAOSw7XZXiCJy/s-l225.jpg>

<http://catalog.stamplib.org/InmagicGenie/ImageFolder/postmarks%20on%20the%20rhodesia%2001913%20529737.jpg>