



Universiteit
Leiden
The Netherlands

British South Africa Company: 1896

Dietz, A.J.

Citation

Dietz, A. J. (2018). British South Africa Company: 1896. *African Postal Heritage (Aph) Papers*. Retrieved from <https://hdl.handle.net/1887/62340>

Version: Not Applicable (or Unknown)

License: [Leiden University Non-exclusive license](#)

Downloaded from: <https://hdl.handle.net/1887/62340>

Note: To cite this publication please use the final published version (if applicable).



African Studies Centre Leiden

African Postal Heritage

APH Paper 23 Part 2

Ton Dietz

British South Africa Company: 1896

January 2018

Introduction

Postage stamps and related objects are miniature communication tools, and they tell a story about cultural and political identities and about artistic forms of identity expressions. They are part of the world's material heritage, and part of history. Ever more of this postal heritage becomes available online, published by stamp collectors' organizations, auction houses, commercial stamp shops, online catalogues, and individual collectors. Virtually collecting postage stamps and postal history has recently become a possibility. These working papers about Africa are examples of what can be done. But they are work-in-progress! Everyone who would like to contribute, by sending corrections, additions, and new area studies can do so by sending an email message to the APH editor: Ton Dietz (dietzaj@asc.leidenuniv.nl). You are welcome!

Disclaimer: illustrations and some texts are copied from internet sources that are publicly available. All sources have been mentioned. If there are claims about the copy rights of these sources, please send an email to asc@asc.leidenuniv.nl, and, if requested, those illustrations will be removed from the next version of the working paper concerned.

African Studies Centre Leiden
P.O. Box 9555
2300 RB Leiden
The Netherlands

Telephone	+31-71-5273372
E-mail	asc@asc.leidenuniv.nl
Website	http://www.ascleiden.nl
Facebook	www.facebook.nl/ascleiden
Twitter	www.twitter.com/ascleiden
Countryportal	http://countryportal.ascleiden.nl

Illustrations cover page:

ASC Leiden postage stamp Nederland (2011): ©African Studies Centre Leiden

Cape of Good Hope postage stamp 1853:

http://upload.wikimedia.org/wikipedia/commons/thumb/7/7c/Cape_Triangular_Postage_Stamp.jpg/400px-Cape_Triangular_Postage_Stamp.jpg

Egypt postage stamp 1914:

https://upload.wikimedia.org/wikipedia/commons/4/4b/Post_Stamp_Egypt.jpg

Table of contents

Part 1: Introduction	4
Postage Stamps 1892 ‘Small Arms’	11
1893 Postal stationery	34
1894 Matabeleland Telegraph provisionals	41
Part 2: 1896 New design, ‘Large Arms’	47
Part 3: 1896 Stationery and fiscal stamps	77
1896 Matabeleland Rebellion	84
1896 British South Africa Company on postage stamps of Cape of Good Hope	88
1896 Tati Concessions	92
1897 Large Arms stamps	96
Part 4: 1898 New Design ‘Arms’	109
1898 Francistown to Bechuanaland	137
1900 Currency Cards	149
Part 5: 1900 Use of BSAC stamps in the Boer War in South Africa	153
1903 Railway Stamp Tati Concession: Beira & Mashonaland Railways	160
1905 Victoria Falls stamps	166
1909 Rhodesia on BSAC stamps	176
Part 6: 1910 Double Heads stamps	191
1913-1922 Admirals stamps	224
Final period of BSAC and BSAC stamps: 1923-1924	259
Index of Postmarks British South Africa Company 1892-1924	262
A Note on sources	267

1896, Large Arms: new design, two types

Type I



<http://www.philateliefriends.co.za/upload/16324.jpeg> RHODESIA BSA COMPANY - SPECIMENS: 1896-97 Arms (Die I) 8d, 3s & 4s, (Die II) 4d, 2s, 2/6d, 5s & 10s (short SE corner perf) plus (Die III) 3d value, all overprinted diagonally "Specimen" in black script & mostly VF LMM, a scarce group



<http://www.rhodesia.co.za/Images/large/RA6635.jpg>: "1d to 4/-, basic set of nine values very fine fresh mint. A difficult assembly. SG 29-37".



<http://www.rhodesia.co.za/Images/large/MBSA66.jpg>: "1d to 4/-, complete set of nine values, plus additional listed shade of the 4d then unlisted distinct shades of the 2d, 3d, 8d, 3/- and 4/-. A selected very fine and fresh mint set. A scarce assembly. SG 29-37".



<http://www.rhodesia.co.za/Images/large/MBSA171.jpg>: "1d to 4/-, basic set of nine values plus 2d and 4d shades. Very fine or superb used. SG 29-37".

Type II



<http://www.rhodesia.co.za/Images/large/MBSA72.jpg>: "1/2d to 10/- complete set of nine values. A selected very fine and fresh mint set. A difficult assembly. SG 41-50".

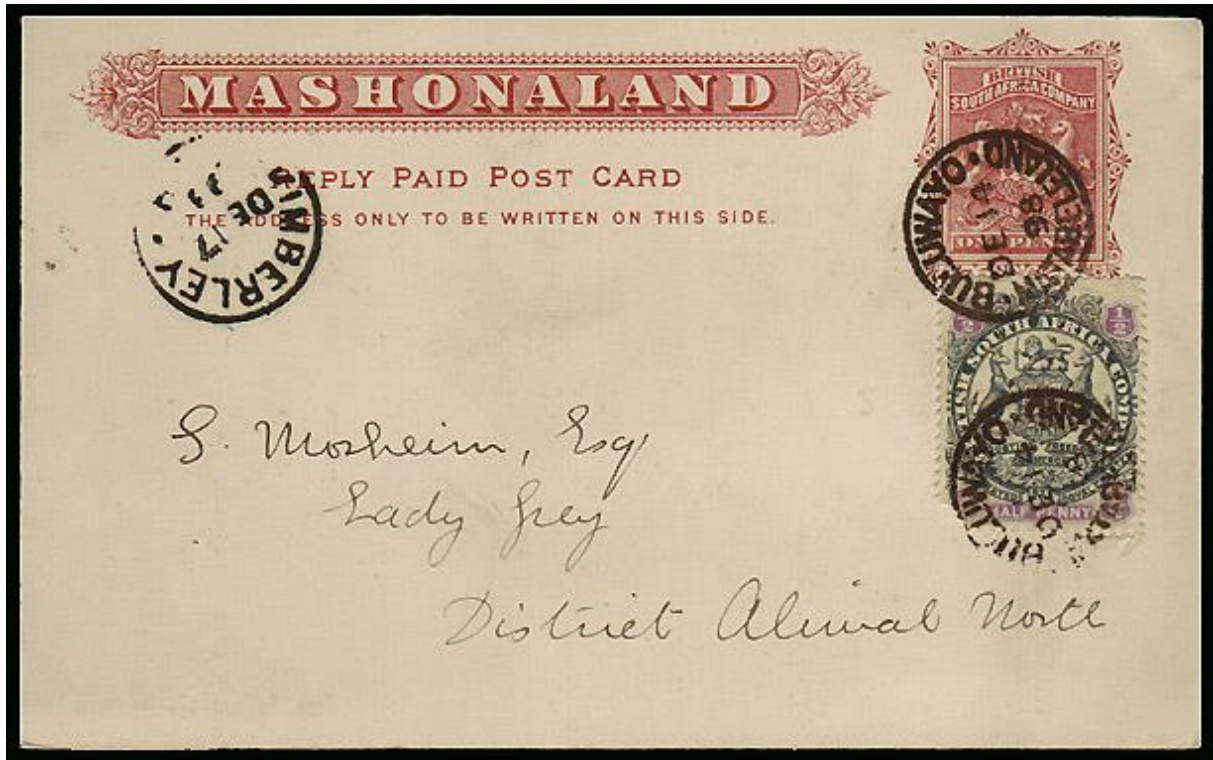


<http://www.rhodesia.co.za/Images/large/MBSA173.jpg>: “½d to 10/-, basic set of nine values plus 2d and 4d shades. Very fine used. SG 41-50 “

1/2p grey and violet (Mi 25II);



http://3.bp.blogspot.com/_F_N37wkWAAQ/TpZhEdojsQI/AAAAAAAAABeE/ecC5WHIH7sk/s640/IMG6.jpg



<http://www.rhodesia.co.za/Images/large/RA4483.jpg>: "1898 14th December, outgoing half of 1d reply paid postal stationery card (H&G 7) addressed to the Cape with additional 1/2d Arms (SG 41, fault) tied by BULUWAYO / Matabeleland (14 Dec) sc datestamp. Kimberley (17 Dec) transit and Lady Grey (22 Dec) arrival backstamp. Reverse with printed subscription details for the Bulawayo Chronicle."

1p red and sea green (Mi 26I and II);



<http://www.rhodesia.co.za/Images/large/RA8296.jpg> : “1d, lower marginal block of six, slightly patchy gum, fine and fresh unmounted. SG 42” (Type II)



<http://www.rhodesia.co.za/Images/large/RA2254.jpg>: “MANGWE sc, complete and part strikes dated JU 16 9 (blank), on pair 1d large Arms (SG 42). Very fine.”.



<http://www.postmarks.co.za/images/BONC%20951%20rhodesia.jpg>: "GWELO. 03.06.1894 to 10.11.1965. HQ of Gwelo District". "951".



http://www.rhodesianstamps.net/BSAC/Southern_Rhodesia_Postmarks/On_Large_Arms/BROMLEY.jpg: "BSAC 405 BROMLEY OC 30 97 - Type 6 - By far the earliest date (Previously JA 200) Very Rare Magnificent strike".

<http://www.postmarks.co.za/PH%20Southern%20Rhodesia%20Bikita%20to%20Buhera.htm>: "BROMLEY. 30.10.1897 to October 1898. 11.05.1899 to 23.02.1901. 12.02.1923 to 10.11.1965. Situated in the Goromonzi District".

2p sepia and lilac (Mi 271 and II);



<https://swmedia-4cd6.kxcdn.com/media/catalogue/British-South-Africa-Company/Postage-stamps/E1-s.jpg>

<https://swmedia-4cd6.kxcdn.com/media/catalogue/British-South-Africa-Company/Postage-stamps/E11-s.jpg>



<http://www.rhodesia.co.za/Images/large/RA9501.jpg> : “2d, yellow-brown and mauve, block of four, very fine used. SG 43a” (Type II) Cancelled SALISBURY Rhodesia.



http://www.rhodesianstamps.net/BSAC/Southern_Rhodesia_Postmarks/On_Large_Arms/INSIZA.jpg: “BSAC 427 INSIZA JU 22 99 - Type 6 Very Rare”.

http://www.rhodesianstamps.net/BSAC/Southern_Rhodesia_Postmarks/On_Large_Arms/MANGWE.jpg: “BSAC 433 MANGWE MATABELELAND Type 4”.



[http://www.rhodesianstamps.net/BSAC/Southern Rhodesia Postmarks/On Large Arms/SE LUKWE MATABELELAND.jpg](http://www.rhodesianstamps.net/BSAC/Southern_Rhodesia_Postmarks/On_Large_Arms/SE_LUKWE_MATABELELAND.jpg): "BSAC 443 SELUKWE MATABELELAND OC 12 98 - Type 4 Scarce".

<http://www.postmarks.co.za/images/Rhodesia%20B.jpg>: "BULAWAYO. 15.01.1894 to 15.10.1893. Major city in western Rhodesia . Earlier name Gubalawayo - see there –". "B"

<http://www.postmarks.co.za/images/BONC%20274%20Rhodesia.jpg>: "CHARTER. 1892 to 15.03.1909. Postal agency under Salisbury. Renamed to Marshbrook". "274"

<http://www.postmarks.co.za/images/Iron%20Mine%20Hill%204%2022.jpg>: "IRON MINE HILL. 01.03.1896 to closed by 31.03.1899. 15.12.1913 to 30.06.1950. Postal agency under Gwelo". Also see 1898.

3p red brown and blue (Mi 28I and II)



<http://www.rhodesia.co.za/Images/large/RA2447.jpg>: "3d, handstamped diagonally with italic 'Specimen' in black (Samuel R4). Pulled perf. lower left, otherwise very fine with gum. Rare. SG 31s (Type I)".

http://filateliakevorkian.com/4230-home_default/british-south-africa-company-stamps-1896-coat-of-arms-yv-31-1-value-hinged.jpg



<http://www.rhodesia.co.za/Images/large/MBSA535.jpg>: “3d, block of four very fine used each cancelled 'PLUMTREE 30 JUL 02' dc datestamps. Unwashed with intact colour. A lovely and scarce commercially used multiple, inevitably CTO. SG 31, (Type I)”.

<http://www.rhodesia.co.za/Images/large/RA4903.jpg>: “FIFE / N. E. RHODESIA sc, crisp strikes dated FE 2 01, on 3d large arms (SG 31)”.

4p blue and lilac (Mi 29Ia and 29II a), and ultramarine and lilac (Mi 29IIb)



<http://www.rhodesia.co.za/Images/large/MBSA263.jpg>: “4d blue and mauve shade, overprinted diagonally in black script 'Specimen.' (Samuel type R3, ex. the Presentation sets). Superb and fresh unmounted. SG 44as” (Type II).



<https://swmedia-4cd6.kxcdn.com/media/catalogue/British-South-Africa-Company/Postage-stamps/E3-s.jpg>

<https://swmedia-4cd6.kxcdn.com/media/catalogue/British-South-Africa-Company/Postage-stamps/E12-s.jpg>

<https://swmedia-4cd6.kxcdn.com/media/catalogue/British-South-Africa-Company/Postage-stamps/E13-s.jpg>



<http://www.midphil.com/images/170185.jpg>: "British South Africa Company: 1896-97, 4d blue & mauve. SG 32b. Good used.". Cancelled BULAWAYO.



http://www.rhodesianstamps.net/BSAC/Southern_Rhodesia_Postmarks/On_Large_Arms/EAGLE_HAWK.jpg: “BSAC 410 EAGLE HAWK 31 OCT 01 Type 7w – Rare”.

<http://www.postmarks.co.za/PH%20Southern%20Rhodesia%20Craigmore%20to%20Eagle%20Hawk.htm> : “EAGLE HAWK. 06.04.1898 closed by 31.03.1905. Postal agency under Bulawayo”.

http://www.rhodesianstamps.net/BSAC/Southern_Rhodesia_Postmarks/On_Large_Arms/FRANCESTOWN_SOUTH_AFRICA.jpg: “BSAC 416 FRANCESTOWN SOUTH AFRICA JA 1 9 (1899)- Type SA 1z Scarce”.

<http://www.postmarks.co.za/PH%20Southern%20Rhodesia%20Featherstone%20to%20Gathes%20Mine.htm> : “FRANCISTOWN. July 1897 to September 1898. HQ of Tati District. Transferred to Bechuanaland Protectorate September 1898”.



http://www.rhodesianstamps.net/BSAC/Southern_Rhodesia_Postmarks/On_Large_Arms/GADZEMA.jpg: “BSAC 420 GADZEMA 13 JAN 01 Type 7w”.

<http://www.postmarks.co.za/PH%20Southern%20Rhodesia%20Featherstone%20to%20Gathes%20Mine.htm> : GADZEMA (STATION). 20.09.1898 to 23.11.1920. 03.08.1921 to 10.11.1965. Postal agency under Salisbury”.

http://www.rhodesianstamps.net/BSAC/Southern_Rhodesia_Postmarks/On_Large_Arms/VICTORIA_MASHONALAND.jpg: “BSAC 456 VICTORIA MASHONALAND AU 25 99 Type 5a “

<http://www.postmarks.co.za/images/Feira%201903.jpg>: “FEIRA. 30.04.1902 to 01.08.1933...On the confluence of the Zambesi and Luangwa River”.



<http://www.postmarks.co.za/images/Bonsor%201.jpg>: "BONSOR. 1900 to 19.10.1903. Situated in the Selukwe District".

<http://www.rhodesia.co.za/Images/large/RA4536.jpg>: "CHARTER / MASHONALAND sc, almost complete crisp strike dated JU 11 (no year), on 4d Arms (SG 32)".



http://www.rhodesianstamps.net/BSAC/Postal_History/Rhodesia_cover_from_Mwomboshi.jpg: "BSAC 884 Envelope with Large Arms 4d to England an old rate as it was reduced to 2½d on 1.8.03. Cancelled with rare squared circle MWOMBOSHI 31 OC 05 With an additional strike at the left back stamped BULAWAYO 11 NOV 05 transit and CHISWICK DE 2 05 arrival Rare cover".



http://www.rhodesianstamps.net/BSAC/Postal_History/Rhodesia_envelope_with_Tati_excised_datestamp.jpg: "BSAC 888. Envelope to South Africa with a BSAC 4d Large Arms cancelled TATI (excised) AU 30 7 (1897) Kimberley SP 3 97 arrival cancel. There is a pencil notation on the reverse N. HOOVER Transvaal Coal Trust Co. The date of this excised cancel is the earliest recorded for a TATI excised date stamp".



<http://www.rhodesia.co.za/Images/large/RA4203.jpg>: "1897 8th March, cover addressed to the Cape bearing Arms 4d ultramarine (SG 32) tied by 'SALISBURY / MASHONALAND' single

circle datestamp. Cape Town (28 Mar) arrival backstamp. Cover with clean vertical fold.”.
(Type I).



<http://www.postmarks.co.za/images/Hartley%20Rhodesia%20cover.jpg> ; “HARTLEY. 1892 to 1896. 01.07.1898 to 10.11.1965. HQ of Hartley District”.

6p lilac and red (Mi 30I and II)



<https://swmedia-4cd6.kxcdn.com/media/catalogue/British-South-Africa-Company/Postage-stamps/E4-s.jpg>

<https://swmedia-4cd6.kxcdn.com/media/catalogue/British-South-Africa-Company/Postage-stamps/E14-s.jpg>



[http://www.rhodesianstamps.net/BSAC/Southern Rhodesia Postmarks/On Large Arms/FRANCESTOWN TATI excised.jpg](http://www.rhodesianstamps.net/BSAC/Southern_Rhodesia_Postmarks/On_Large_Arms/FRANCESTOWN_TATI_excised.jpg): "BSAC 415 FRANCESTOWN (TATI excised) DE 25 9 (1897) Year digit above month on its side Type 4 with TATI excised 13 examples recorded Very rare & seldom offered".

[http://www.rhodesianstamps.net/BSAC/Southern Rhodesia Postmarks/On Large Arms/TULI MATABELELAND.jpg](http://www.rhodesianstamps.net/BSAC/Southern_Rhodesia_Postmarks/On_Large_Arms/TULI_MATABELELAND.jpg): "BSAC 453 TULI MATABELELAND Type 5a Rare".

<http://www.postmarks.co.za/images/Enkeldoorn%201897.jpg>: "ENKELDOORN . ENKLEDOORN) 05.08.1896 to 10.11.1965. Charter District".



<http://www.rhodesia.co.za/Images/large/RA5562.jpg>: "1897 16th December, cover bearing 1d and 6d large Arms die I (SG 29, 33), each cancelled with crisp 'MARANDELLA'S / DE 16 97 / RHODESIA' sc datestamps. Addressed to the USA, transit and arrival datestamps on reverse. Clean and attractive.". (Type 1).



<https://i.ebayimg.com/thumbs/images/g/~w8AAOSwuq9ZaELf/s-l225.jpg> : "MS4067 1900 RHODESIA BSACo *Salisbury Club* Cover IRELAND Brookeboro Fermanagh".

8p green and violet on coloured paper (Mi 311)



<http://www.rhodesia.co.za/Images/large/MBSA330.jpg>: "UNACCEPTED ESSAY / COLOUR TRIAL for the design, without crown at top. In close to issued colours of green and mauve on buff, perforated un-gummed paper. Few perforations trimmed lower left otherwise fine."



<http://www.rhodesia.co.za/Images/large/MBSA264.jpg>: “8d, block of four overprinted diagonally in black script 'Specimen.' (Samuel type R3, ex. the Presentation sets). Superb and fresh mint or unmounted. SG 34s”, (Type I).

<https://swmedia-4cd6.kxcdn.com/media/catalogue/British-South-Africa-Company/Postage-stamps/E5-s.jpg>



http://www.rhodesia.co.za/Images/featured/MBSA630_f.jpg: “1896 8d, green and mauve on buff. Major variety IMPERFORATE (PAIR). Collector's handstamp on reverse of each, very fine mint”. (Type I)



<http://www.rhodesia.co.za/Images/large/RA9502.jpg>: “8d, block of four, very fine commercially used cancelled 'UMTALI 9 SEP 02'. Scarce. SG 34” (Type I).

http://www.rhodesianstamps.net/BSAC/Southern_Rhodesia_Postmarks/On_Large_Arms/EN_KELDOORN.jpg: “BSAC 411 ENKELDOORN - On SG 72 26 JAN 98 - Type 13sx A total of 225,470 stamps - Remainder Cancelled - Commercial use of stamp rare”.



<http://www.postmarks.co.za/images/Abercorn%20s.%20Rhodesia.jpg>: “ABERCORN. Postal Agency near Shamva Station. Open: 31.01.1899 to August 1903”.

<http://www.postmarks.co.za/images/Fort%20Jameson%201903%20NR.jpg>: “FORT JAMESON. October 1899 to 23.10.1964. Headquarters of the Eastern Province”.



<http://www.rhodesia.co.za/Images/large/MBSA889.jpg>: "LOMAGUNDI dc, crisp almost complete strike dated 18 MAY 1908, on 8d large Arms".

<http://www.postmarks.co.za/PH%20Southern%20Rhodesia%20Lancaster%20to%20Mabelreign.htm>: "LOMAGUNDI (LOMOGONDI) (LOMOGUNDI). 07.03.1895 to 01.07.1909. Renamed Sinoia".

<http://www.postmarks.co.za/images/Kalomo%20NW%20Rhodesia%201906.jpg>: "KALOMO. June 1901 to 23.10.1964. PO from 1956".

<https://i.ebayimg.com/thumbs/images/g/62wAAOSwVm5Y9NqA/s-l225.jpg>: "Rhodesia 1896 8d with Barred 312 postmark. Rhodesia 1896 Eight Pence ..." [Iron Mine Hill] .



<https://i.ebayimg.com/thumbs/images/g/Gd4AAOSwtnpXnRol/s-l225.jpg>: "Rhodesia 1896 8d with Barred E postmark. Rhodesia 1896 Eight Pence ...".

1Sh green and blue (Mi 321);



<http://mystampsforsale.co.uk/ecommerce/image/cache/catalog/British%20South%20Africa%20Company/cov%20129-228x228.jpeg>: “British South Africa Company one shilling stamp in mounted mint condition.”.

<https://i.ebayimg.com/thumbs/images/g/rMIAAOSw-29ZO-pE/s-l225.jpg>: “BRITISH SOUTH AFRICA 1896 1/ Stamp - Used - SUPERB UMTALI RED Cancel - r59b2462”.

2Sh blue and green on coloured paper (Mi 33II);



<http://www.rhodesia.co.za/Images/large/MBSA265.jpg>: “2/-, block of four overprinted diagonally in black script 'Specimen.' (Samuel type R3, ex. the Presentation sets). Superb and fresh mint or unmounted. SG 47s” (Type II).

<https://swmedia-4cd6.kxcdn.com/media/catalogue/British-South-Africa-Company/Postage-stamps/E15-s.jpg>



<http://www.rhodesia.co.za/Images/large/RA8728.jpg>: "2/-, in combination with 1898 1/- Arms on piece. Cancelled 'REGISTERED / BULAWAYO AU 9 02' sc datestamps. Attractive. SG 47. 84"(2 Sh Type II). Cancelled Bulawayo.

2Sh 6p brown and violet on yellow paper (Mi 34II);



<http://www.rhodesia.co.za/Images/large/RA9821.jpg>: "2/6, handstamped diagonally with italic 'Specimen' in black (Samuel R4), additionally with part receiving authority handstamp. Without gum. RARE. SG 48s"(Type II).

<https://swmedia-4cd6.kxcdn.com/media/catalogue/British-South-Africa-Company/Postage-stamps/E16-i.jpg>

3Sh green and violet on blue paper (Mi 35I);



<http://www.rhodesia.co.za/Images/large/MBSA266.jpg>: “3/-, block of four overprinted diagonally in black script 'Specimen.' (Samuel type R3, ex. the Presentation sets). Superb and fresh mint or unmounted. SG 36s” (Type 1).

<https://swmedia-4cd6.kxcdn.com/media/catalogue/British-South-Africa-Company/Postage-stamps/E7-s.jpg>

<http://www.midphil.com/images/170186.jpg>: “British South Africa Company: 1896-97, 3/- green & mauve/blue. SG 36. Fine used.”. Cancelled NDOLA.



http://www.rhodesianstamps.net/BSAC/Northern_Rhodesia_Postmarks/On_Arms_issue/Kampanda.jpg: “BSAC 218 KAMPANDA NO 10 03 - Type 3”.

<http://www.postmarks.co.za/PH%20Northern%20Rhodesia%20Kalomo%20to%20Kansanshi.htm>: “KAMPANDA. 13.02.1903 to 29.09.1906. Sub post office under Fife”

<http://www.postmarks.co.za/images/Rhodesia%20D%20-3.jpg>: "BULAWAYO. 15.01.1894 to 15.10.1893. Major city in western Rhodesia . Earlier name Gubalawayo - see there –". "D".

4Sh red and blue on green paper (Mi 36I)



<https://swmedia-4cd6.kxcdn.com/media/catalogue/British-South-Africa-Company/Postage-stamps/E8-s.jpg>

<http://4.bp.blogspot.com/-n3HWbQz7Tsk/VFahUzOC0pI/AAAAAAAAWFs/C4BIROzy3jk/s1600/Rhodesia37.jpg>

5Sh red orange and green (Mi 37II)



<http://www.rhodesia.co.za/Images/large/MBSA268.jpg>: "5/-, block of four overprinted diagonally in black script 'Specimen.' (Samuel type R3, ex. the Presentation sets). Superb and fresh mint or unmounted. SG 49" (Type II).

<https://swmedia-4cd6.kxcdn.com/media/catalogue/British-South-Africa-Company/Postage-stamps/E17-s.jpg>



<http://www.rhodesia.co.za/Images/large/RA3619.jpg>: “5/-, horizontal strip of three on piece, cancelled 'SALISBURY 30 AUG 97' datestamps. Very fine and attractive, uncommon commercial use. SG 49”.



<http://www.rhodesia.co.za/Images/large/B501.jpg>: “D' (Bulawayo), on 5/- large Arms”.

10Sh grey and red on pink (Mi 38II)



<http://www.rhodesia.co.za/Images/large/RA9822.jpg>: "10/-, handstamped diagonally with italic 'Specimen' in black (Samuel R4), additionally with part receiving authority handstamp. Without gum. RARE. SG 50s" (Type II)

<https://swmedia-4cd6.kxcdn.com/media/catalogue/British-South-Africa-Company/Postage-stamps/E18-s.jpg>



<http://www.rhodesia.co.za/Images/large/MBSA90.jpg>: "10/-, block of four, superb CTO." (Type II). Cancelled: BULUWAYO Matabeleland.



<http://www.rhodesia.co.za/Images/large/AR171.jpg>: "10/-, superb fiscally used, tied to part of a licence by a very fine strike of THE BRITISH SOUTH AFRICA COMPANY / REVENUE / NORTH EASTERN / RHODESIA double circle canceller. Very scarce usage. SG 50".