



African Studies Centre Leiden
African Postal Heritage

APH Paper 22, Part 2

Ton Dietz

British Central Africa, Nyasaland, and Malawi

January 2018

Introduction

Postage stamps and related objects are miniature communication tools, and they tell a story about cultural and political identities and about artistic forms of identity expressions. They are part of the world's material heritage, and part of history. Ever more of this postal heritage becomes available online, published by stamp collectors' organizations, auction houses, commercial stamp shops, online catalogues, and individual collectors. Virtually collecting postage stamps and postal history has recently become a possibility. These working papers about Africa are examples of what can be done. But they are work-in-progress! Everyone who would like to contribute, by sending corrections, additions, and new area studies can do so by sending an email message to the APH editor: Ton Dietz (dietzaj@asc.leidenuniv.nl). You are welcome!

Disclaimer: illustrations and some texts are copied from internet sources that are publicly available. All sources have been mentioned. If there are claims about the copy rights of these sources, please send an email to asc@asc.leidenuniv.nl, and, if requested, those illustrations will be removed from the next version of the working paper concerned.

African Studies Centre Leiden
P.O. Box 9555
2300 RB Leiden
The Netherlands

Telephone	+31-71-5273372
E-mail	asc@asc.leidenuniv.nl
Website	http://www.ascleiden.nl
Facebook	www.facebook.nl/ascleiden
Twitter	www.twitter.com/ascleiden
Countryportal	http://countryportal.ascleiden.nl

Illustrations cover page:

ASC Leiden postage stamp Nederland (2011): ©African Studies Centre Leiden

Cape of Good Hope postage stamp 1853:

http://upload.wikimedia.org/wikipedia/commons/thumb/7/7c/Cape_Triangular_Postage_Stamp.jpg/400px-Cape_Triangular_Postage_Stamp.jpg

Egypt postage stamp 1914:

https://upload.wikimedia.org/wikipedia/commons/4/4b/Post_Stamp_Egypt.jpg

Table of contents

Part 1	1
Introduction	4
Pre-1891	5
British Central Africa (1891-1908)	5
Part 2	55
Nyasaland Protectorate (1908-1916)	56
1916 N.F. Surcharge (Nyasaland Forces. Occupation of parts of German East Africa)	78
Nyasaland Protectorate (1916-1953)	85
Postmarks of Nyasaland during the Federal period (1953-1963)	131
Nyasaland postage stamps in 1963	153
Part 3	160
Malawi, selection of postage stamps (1964 onwards)	163
Inventory of Postmarks of British Central Africa, Nyasaland and Malawi	208
A Note on Sources	212

Nyasaland Protectorate

1908 Edward VII



<https://www.sandafayre.com/stockimages/57134649.jpg>

1/2p green (Mi 1)



<http://kayatana.com/images/rhodnyasa/NYS1908-73-s1-MM-1.75.jpg>

http://www.rhodesianstamps.net/Nyasaland_stamps/05_Fiscals_Revenues_Postmarks/Postmarks/NYD_259_Neno.jpg: "NYD 259. NENO Type 6z Part strike – Rare". Also:

<http://www.postmarks.co.za/PH%20Nyasaland%20Namwera%20to%20Njuli.htm>: "NENO,

1905 to 30.10.1906; 20.02.1909 to 15.11.1923; 17.07.1952 to 04.07.1964. Postal agency
under Mwanza from 1952”.

<http://www.postmarks.co.za/images/Livingstonia%20MOO.jpg>: “LIVINGSTONIA. 21.10.1912
to 04.07.1964. Renamed from Deep Bay”.

1p carmine (Mi 2)



<http://kayatana.com/images/rhodnyasa/NYS1908-74-s1-MM-8.50.jpg>

<https://i.pinimg.com/736x/87/d0/79/87d07991e18b17be20bf32ff4665e818--vii-lwren-scott.jpg> Cancelled TSHIROMO

<http://kayatana.com/images/nyasaland/NYS1908-74-s1-FU-1.00.jpg> Cancelled TSHIKWAWA.

<http://2.bp.blogspot.com/-dBgDqr7G7ZE/U2O5-DelU9l/AAAAAAAT40/BPKUoEzZhaE/s1600/imgNyasalprot3.jpg>. Cancelled BLANTYRE.

3p dark lilac on yellow (Mi 3)



<http://kayatana.com/images/rhodnyasa/NYS1908-75-s1-MM-1.75.jpg>

4p red and black on yellow (Mi 4)



<http://kayatana.com/images/rhodnyasa/NYS1908-76-s1-MM-1.75.jpg>

6p purple and dark lilac (Mi 5)



<http://kayatana.com/images/rhodnyasa/NYS1908-77-s1-MM-5.50.jpg>

1Sh black on green (Mi 6)



<http://kayatana.com/images/rhodnyasa/NYS1908-72-s1-MM-5.50.jpg>



<http://www.postmarks.co.za/images/Fort%20Johnston%205%20cover.jpg>: "FORT JOHNSTON, 1891 to 04.07.1964".

2Sh 6p red and black on blue (Mi 7)



<http://kayatana.com/images/rhodnyasa/NYS1908-78-s1-MM-75.00.jpg>

4Sh black and red (Mi 8)



<https://i.ebayimg.com/thumbs/images/g/AigAAOSwPYZU74ew/s-l225.jpg>

10Sh red and green on green (Mi 9)



<http://kayatana.com/images/rhodnyasa/NYS1908-80-s1-MM-200.00.jpg>

1£ black and lilac on red (Mi 10)



<http://stampauctionnetwork.com/Y/1130/1555.jpg>

1913-1921 George V with multiple CA watermark



<http://www.filat.ch/images/pictures/wprcg083.jpg>: "NYASALAND 1913 KGV ½D - 4/- GABON SPECIMENS".



http://www.kelleherauctions.com/lotphotos_large/687/599663N2.jpg

1/2p green (Mi 11)



<https://swmedia-4cd6.kxcdn.com/media/catalogue/Nyasaland/Postage-stamps/C-s.jpg>.
1913 1/2d.

<https://i.ebayimg.com/thumbs/images/g/F3MAAOSw5cNYIb9i/s-l225.jpg>: “NYASALAND
STAMPS - 1913 - PAIR 1/2d USED”. Cancelled DEDZA.

[https://www.hipstamp.com/uploads/cache/ebbf0e0454336e95909110ad81962ebc-
250x286.png](https://www.hipstamp.com/uploads/cache/ebbf0e0454336e95909110ad81962ebc-250x286.png): “NYASALAND; 1913 early GV issue fine used 1/2d. value fine Postmark
[LIMBE]”. And:

<http://www.postmarks.co.za/PH%20Nyasaland%20Lilongwe%20to%20Limbe.htm>: “LIMBE.
01.03.1909 to 04.07.1964”.



<http://www.postmarks.co.za/images/Dedza%203%20MOO.jpg>: “DEDZA, 01.01.1899 to
01.09.1901; 1905 to 04.07.1964”.

1p red (Mi 12a), and deep red (Mi 12b, 1916)



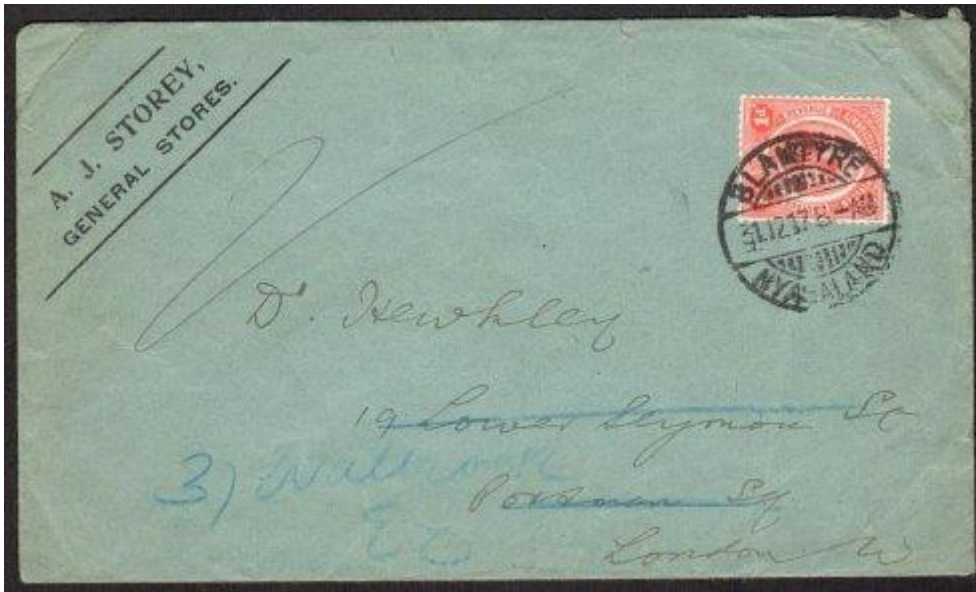
<https://swmedia-4cd6.kxcdn.com/media/catalogue/Nyasaland/Postage-stamps/C1-i.jpg>

1913 1d.

<https://i.ebayimg.com/thumbs/images/g/YxIAAOSwYmZXHOEZ/s-l225.jpg>: "NYASALAND ,
1913/19 , KING GEORGE V ,1p STAMP , PERF , USED". Cancelled ...[L]MBE">

<https://i.ebayimg.com/thumbs/images/g/BoEAAOSw-YVXmG-h/s-l225.jpg>: "Nyasaland 1913-
21 SG#86, 1d Scarlet KGV Used #D30220". Cancelled ZOMBA

<http://www.postmarks.co.za/images/Ngara%201916.jpg>: "NGARA. 09.09.1906 to 1922.
Replaced by Kasungu".



http://www.rhodesianstamps.net/Nyasaland_stamps/06_Postal_Stationery_Postal_History/NYD_350_1917_WWI_cover_from_Blantyre.jpg: "Printed envelope from A.J. STOREY
GENERAL STORES, With KGV 1d to UK Cancelled Panel type BLANTYRE 31.12.17 . Last day of
year".



<http://www.stevedrewett.com/images/5026.jpg> Cancelled FORT JOHNSON



<http://www.postmarks.co.za/images/Ncheu%20%20cover.jpg>: "NCHEU. 31.08.1908 to 04.07.1964".

2p grey (M13, 1916)



<https://swmedia-4cd6.kxcdn.com/media/catalogue/Nyasaland/Postage-stamps/C3-i.jpg> :
1913 2d.

<http://www.postmarks.co.za/images/Lilongwe%204.jpg>: "LILONGWE. 12.10.1905 to 04.07.1964".

<http://www.postmarks.co.za/images/Nyasaland%20Killer%20G.jpg>: BONC "G"; TSHINDE. 23.11.1893 to 17.03.1896. Renamed to Chinde. Also: "BONC "864".



<http://www.postmarks.co.za/images/Mikolongwe%203%20cover.jpg>: "MIKOLONGWE. 01.11.1910 to 04.07.1964".

2 1/2p ultramarine (M14)



<https://swmedia-4cd6.kxcdn.com/media/catalogue/Nyasaland/Postage-stamps/C4-i.jpg>.
1913 2 1/2d

<https://s-media-cache-ak0.pinimg.com/170x/fc/97/71/fc9771c4f4d357a831bd2193b2fc65de.jpg>: "Nyasaland 1913 King George V Fine Mint SG 89 Scott 15".



<http://www.rhodesianstudycircle.org.uk/wordpress/wp-content/uploads/2017/01/AJS201-300x189.jpg>: "Tobacco curing barns and bulking sheds with general view of plantation. Nyasaland.". Postmarks FORT JOHNSTON and ZOMBA.

<http://www.rhodesianstudycircle.org.uk/wordpress/wp-content/uploads/2017/01/AJS20.13-300x197.jpg>: "View Lake Nyasa". Cancelled FORT JOHNSTON.

3p dark lilac on yellow (Mi 15, 1914)



<https://swmedia-4cd6.kxcdn.com/media/catalogue/Nyasaland/Postage-stamps/C5-i.jpg>
1913 3d.

<https://i.pinimg.com/736x/88/87/50/88875032846b6db7db74013d9ed940ee--violet-lwren-scott.jpg>: "Nyasaland Protectorate 1913 Scott 16 3p violet/ yellow "George V"".



<http://www.postmarks.co.za/images/Zomba%20%20cover.jpg>: "ZOMBA. June 1891 to 04.07.1964".



<http://www.postmarks.co.za/images/Zomba%20%20cover.jpg> Cancelled ZOMBA.

4p red and black on yellow (Mi 16)



<https://swmedia-4cd6.kxcdn.com/media/catalogue/Nyasaland/Postage-stamps/C6-i.jpg>
1913 4d.

http://1.bp.blogspot.com/-EcRAJBWCdEQ/U2O6hJ-XfPI/AAAAAAAAAT48/JEZA5zYO_3M/s1600/imgNyasalP17.jpg: "1913 Scott 17 4p scarlet & black/ yellow "George V"". Cancelled BLANTYRE.

6p purple and violet (Mi 17)



<https://i.ebayimg.com/thumbs/images/g/KZoAAOSw6aVUncDx/s-l225.jpg>: "1913 NYASALAND 6d SCOTT# 18 S.G.# 92a UNUSED BLOCK OF 4 CS08736".



<http://www.postmarks.co.za/images/Chinde%20%201922.jpg>: "CHINDE. British concession on the Zambesi in Mozambique. Renamed from Tshinde. Opened 1896 and 1922".

1Sh black on blue green (Mi 18b) and black on green (Mi 18a)



<https://i.ebayimg.com/thumbs/images/g/rXcAAOSwcXpZl5vm/s-l225.jpg>: “NYASALAND Sc#19a SG#93b 1913 1sh black on emerald colored thru OG Mint”.

<https://swmedia-4cd6.kxcdn.com/media/catalogue/Nyasaland/Postage-stamps/C8-i.jpg>
1913 1/-

2Sh 6p red and black on blue (Mi 19, 1918)



<https://swmedia-4cd6.kxcdn.com/media/catalogue/Nyasaland/Postage-stamps/D1-s.jpg>
1918 2/6

<http://www.britishcommonwealthstamps.com/wp-content/uploads/2015/05/CF476E.jpg>:
“NYASALAND 1913 2/6. SG 94. Crayon Mark. Used”. Cancelled ZOMBA.

4Sh black and red (Mi 20, 1918)



<https://swmedia-4cd6.kxcdn.com/media/catalogue/Nyasaland/Postage-stamps/D2-s.jpg>

1918 4/-

<https://s-media-cache->

<ak0.pinimg.com/236x/7b/12/72/7b1272edcaf4658357fa3416bbe49582.jpg>: "Nyasaland
1913 King George V Fine Mint SG 89 Scott 15".

10Sh red and green on green (Mi 21, 1918)



<https://i.ebayimg.com/thumbs/images/g/hWUAAOSwEBxZblaz/s-l225.jpg>: "NYASALAND
SG96 1913 10/= PALE GREEN & DEEP SCARLET/GREEN MTD MINT".

<http://www.glenstephens.com//Sept15->

<Nyasaland%20KGV%2010sh%20BULLET%20HOLE%20flaw.jpg>: "Nyasaland Protectorate
1913 KGV 10/- Red & Green with "BULLET HOLES IN KGV HEAD": The major SG listed flaw on
this value, and is seldom seen and VERY highly ...".

1£ black and lilac on red (Mi 22, 1918)



<https://www.cherrystonestamps.com/thumb.asp?filename=81830&dw=300&dh=300>:
“Nyasaland Protectorate. 1913 £1 purple and black red, lightly hinged”.

<https://i.ebayimg.com/thumbs/images/g/MQkAAOSwImRYfCVA/s-l225.jpg>: “Nyasaland Protectorate King George V 1913 - 1930 1 Pound / Fiscal Used Stamp”.



<http://www.filat.ch/images/pictures/jusn111.jpg> : “NYASALAND 1913 KGV £1 LOVELY REVENUE USE BLOCK”.

<http://i.ebayimg.com/images/g/wzwAAOSwkGVZsFBE/s-l1600.jpg>: “NYASALAND SG98 1913
£1 PURPLE & BLACK ON RED FISCALLY USED x2”. Cancelled “DISTR. COMMISSIONER
ZOMBA”.

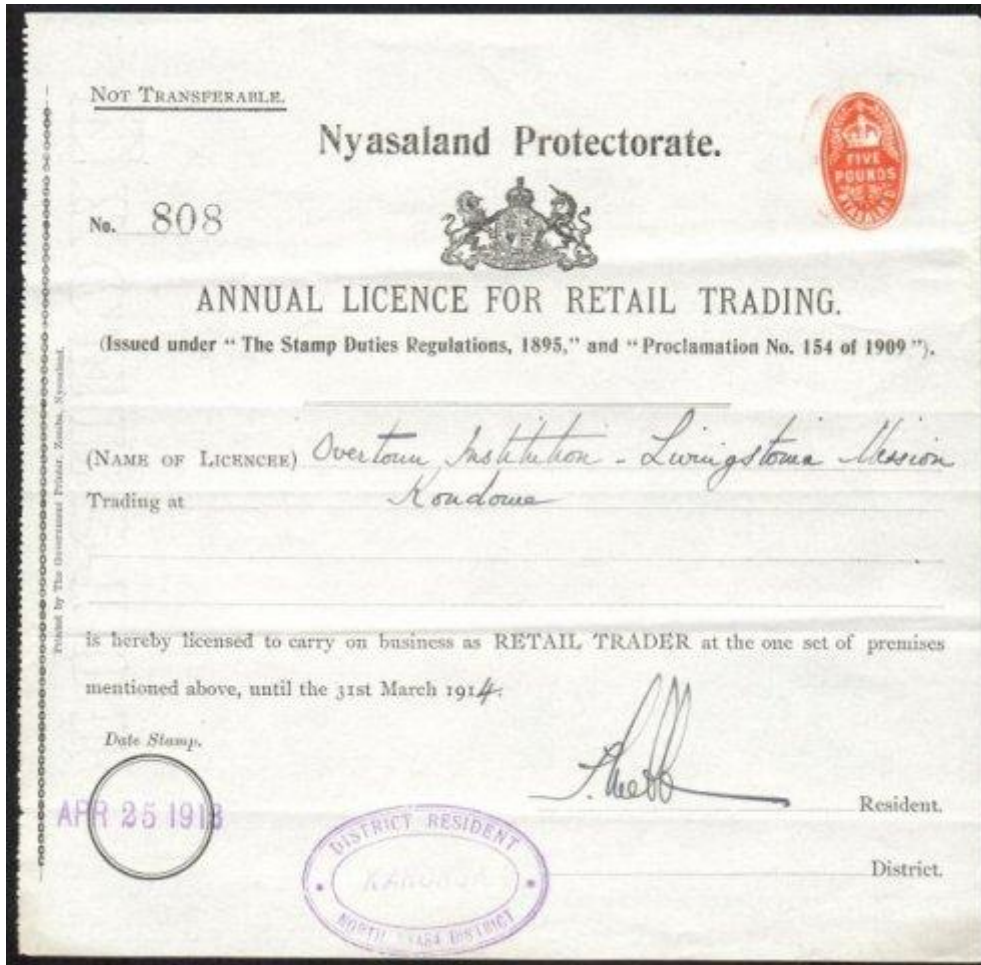
10£



<https://www.stanleygibbons.com/nyasaland-1913-sg99s-specimen-british-commonwealth-stamps-p16704101.html>

<https://s-media-cache-ak0.pinimg.com/564x/b2/af/45/b2af4524fc0223542cb028c980926d37.jpg> : “Nyasaland
Stamp 1913 £10 Purple and Dull Ultramarine SG99 Fine Mint”.

1913 Embossed Revenue



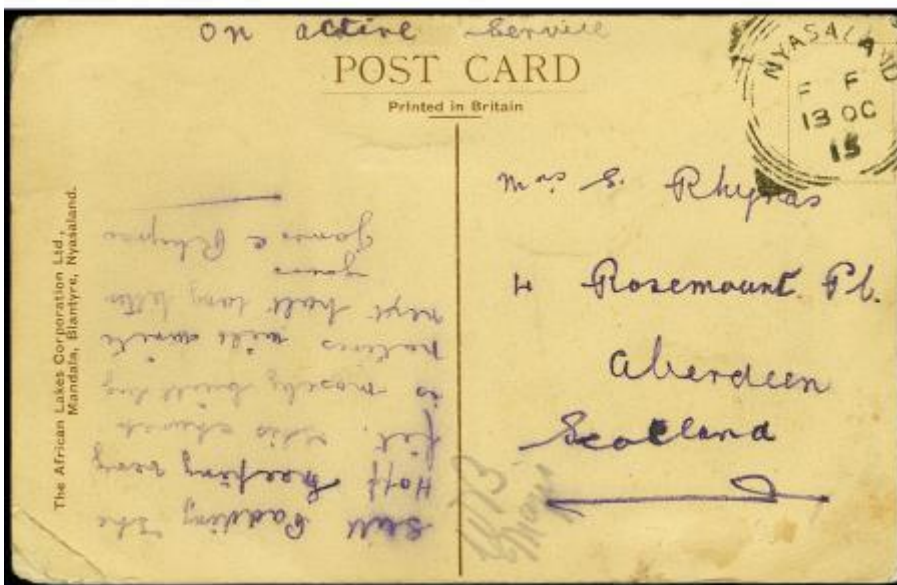
http://www.rhodesianstamps.net/Nyasaland_stamps/05_Fiscals_Revenues_Postmarks/Fiscals_Revenues/NYD_230_1913_Trading_Licence.jpg: "1913 Trading Licence NYD 230 Annual Trading Licence With an Embossed FIVE POUNDS Revenue imprint Issued at KARONGA APR 5 3 by the District Resident to the Overtown Institution Livingstonia Mission Trading at Kondowe".

1914 BSAC stamps used in Karonga



<http://www.postmarks.co.za/images/Karonga%205%20cover.jpg>: "KARONGA. 17.10.1893 to about December 1914; 21.08.1916 to 04.07.1964. North Nyasa District", and "Latest date of first office".

1915 War



https://d1stvyu4yyf2jr.cloudfront.net/modules/auctions/17/pics/medium/b49317c274b7bc_e1cca272914c9e2e275b1b8ec0.jpg Cancelled NYASALAND F.F. [= FIELD FORCES].

1916 N.F. surcharge = Nyasaland Forces: occupation of part of German East Africa

[Also see APH Paper 3]

http://www.stampdomain.com/country/tanzania/Nyasa_Rhodesian_Field_Force.htm: "The Nyasaland Rhodesian Field Forces in German East Africa 1916-1918. The Nyasaland Rhodesian Field Forces, under the command of Brigadier General Edward Northey, began their offensive in East Africa on 20 May 1916. Northey's forces crossed into German East Africa on 25 May 1916. On May 30 they had occupied Neu Langenburg. On June 6 they captured Neu Utengulc. Alt Langenburg was occupied on June 13. Ubená was captured on

June 30. The colony's military commander, General Paul Emil von Lettow-Vorbeck, spent the war harrying 40,000 Allied forces with his band of 3,500 Europeans and 12,000 native Askaris. He surrendered only after receiving news of the armistice on 25 November 1918. The Nyasaland Rhodesian Field Forces troops could send normal letters without stamps via the field post office. If there was any additional postage required, such as for registration or for parcels, it required prepayment. At first unoverprinted Nyasaland stamps were used. Later at the request of Brigadier General Northey, to the Governor of Nyasaland, Nyasaland stamps were overprinted "N.F." Northey had requested the overprint to be "N.F.F." but the telegraph operator omitted one "F." when sending the request to the Governor. Northey always denied that the issue was philatelically inspired; correspondence written by Northey clearly shows that he was an enthusiastic stamp collector. There is no evidence that these stamps were really needed. The overprinting was sanctioned by the Governor of Nyasaland and most of the stamps did see genuine postal usage. These stamps were only available for use by troops of the Nyasaland Rhodesian Field Force. Sale of these stamps in large quantities, for dealing purposes, was forbidden. The stamps were available only from Field Post Offices of the Nyasaland Rhodesian Field Force. Most of these offices were in German East Africa. The Nyasaland Rhodesian Field Force also had FPOs in Nyasaland and in Portuguese East Africa. The stamps were not available at any civilian post office or for civilian use.

The totals quantities overprinted, by the Government Printers in Zomba, based on a statement made by Northey, were as follows: ½d – 60,000; 1d – 120,000; 3d – 12,000; 4d – 6,000; 1s – 6,000. The only major variety is the double overprint on the 3d stamp. All available evidence suggests that only a bottom row of six stamps on one pane was overprinted in this way. To date only four certificates have been issued by The Royal Philatelic Society for this double overprint in used condition. Two of the stamps show FPO 8, on the others only the FPO part remains on the stamp. Three are postmarked 3 March 1918 and one on 2 March 1918. The copy, which is in the Royal Collection, is postmarked 3 March 1918 from FPO 8, which at the time was in Mbamba Bay. The earliest known usage of the ½d and the 1d is 7 August 1916. The 3d on 15 September 1916. The 4d on 13 September 1916. The 1s on 18 September 1916. When supplies of these overprint stamps were exhausted the field post offices used unoverprinted stamps of Nyasaland. During the temporary stay in Mtangula, Mozambique, by one of the columns of the field force, stamps of Portuguese Nyassa (1911 Republica series) were used by the Field Post Office (FPO 2).

LIST OF FIELD POST OFFICES, LOCATIONS AND DATES

Base PO	Karonga, Nyasaland	04.09.14	24.12.15
FPO 1	Neu Langenburg, GEA	04.06.16	26.12.16
	Old Njombe, GEA	16.12.16	17.12.16
	Songea, GEA	01.07.17	
	Limbe, Nyasaland	02.08.18	31.12.18

African Postal Heritage; African Studies Centre Leiden; APH Paper 22 Part 2; Ton Dietz
British Central Africa, Nyasaland, and Malawi; Version January 2018

FPO 2	Rungwe, GEA	20.09.16	01.12.16
	Wiedhafen, GEA	28.02.17	09.03.17
	Likuya, GEA	19.05.17	23.11.17
	Mtangula, Mozambique	01.01.18	28.08.18
FPO 3	Mwaya, GEA	01.06.16	01.10.16
	??, GEA	23.10.16	30.11.16
	Tandala, GEA	30.11.16	???.???.18
FPO 4	Mwaya, GEA	01.09.16	30.11.16
	Old Langenburg, GEA	01.12.16	11.03.17
	Wiedhafen, GEA	12.03.17	???.03.18
FPO 5	Lupembe, GEA	01.12.16	01.02.17
	Songea, GEA	01.03.17	01.07.17
	Mpurukasese, GEA	01.07.17	01.12.17
	Fort Johnston, GEA	01.12.17	01.05.18
	Nameras, GEA	25.05.18	???.10.18
FPO 6	Mwaya, GEA	12.03.17	10.06.17
	Limbe, Nyasaland	10.09.17	???.02.18
	Malokotera, Mozambique	???.03.18	23.05.18
FPO 7	Old Langenburg, GEA	03.03.17	???.07.18
	Reone, Mozambique	20.08.18	
FPO 8	Fort Johnston, Nyasaland	11.04.17	01.12.17
	Mbamba Bay, GEA	01.12.17	08.08.18
FPO 9	Zomba, Nyasaland	05.04.17	05.02.19
FPO 10	Neu Langenburg, GEA	30.07.17	31.03.18
FPO 11	Songea, GEA	06.08.18	13.10.18"



[http://www.rhodesianstamps.net/Nyasaland_stamps/10%20Nyasaland%20Field%20Force/NFF%20003\(1\).jpg](http://www.rhodesianstamps.net/Nyasaland_stamps/10%20Nyasaland%20Field%20Force/NFF%20003(1).jpg)

[http://www.rhodesianstamps.net/Nyasaland_stamps/10%20Nyasaland%20Field%20Force/NFF%20003\(2\).jpg](http://www.rhodesianstamps.net/Nyasaland_stamps/10%20Nyasaland%20Field%20Force/NFF%20003(2).jpg)

[http://www.rhodesianstamps.net/Nyasaland_stamps/10%20Nyasaland%20Field%20Force/NFF%20003\(3\).jpg](http://www.rhodesianstamps.net/Nyasaland_stamps/10%20Nyasaland%20Field%20Force/NFF%20003(3).jpg)



1d and 3d: http://www.stampdomain.com/country/tanzania/NF_overprint.jpg

4d: <https://i.ebayimg.com/thumbs/images/g/B8oAAOSwCGVX-Qqd/s-l225.jpg>



<https://d1stvyu4yyf2jr.cloudfront.net/modules/auctions/17/pics/medium/76db00131acc14973048e6edfcd090700e7d796b.jpg>. Cancelled FPO [= FIELD POST OFFICE].



<https://d1stvyu4yyf2jr.cloudfront.net/modules/auctions/17/pics/medium/9f1ee1942d8f64130f71d0fa6472c43fe8418b23.jpg> : "'R No. 82 FPO2" ms marking on a registered cover addressed to Blantyre, ms "On Active Service", 1d, 3d "N.F." overprints affixed for registry service but were not cancelled until arrival in Zomba where an 8 MR 17 squared circle postmark was applied, backstamped Blantyre 9.3.17, cover with vertical fold at left, still Fine and unusualrnFPO2 was headquartered at Wiedhafen when this letter was posted and was active only from 28 Feb - 9 March 1917."



<https://d1stvyu4yyf2jr.cloudfront.net/modules/auctions/17/pics/medium/3b1cef6272cd0c70682d79ee824a7908b7d9220d.jpg>: "NYASALAND FF2 JU 8 17 squared circle cancel ties pair of 4d "R.F." overprints on cover addressed to Capt Brown in Portuguese East Africa, Very Fine, overpaid and presumably philatelic but quite attractivernFPO 2 was opened upon the British Army offensive into GEA in spring 1917 and was at Likuyu when this cover was posted."

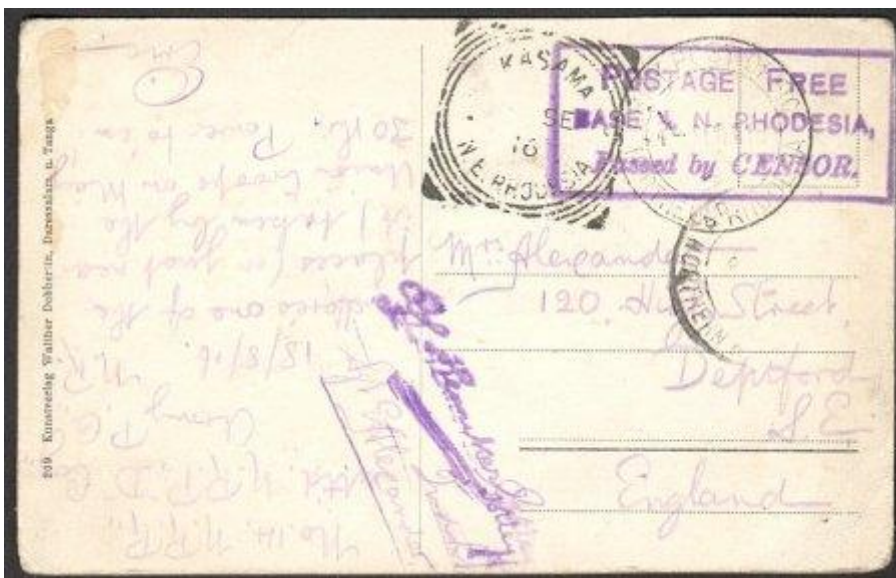


http://www.rhodesianstamps.net/Nyasaland_stamps/10%20Nyasaland%20Field%20Force/NFF%20008.jpg: "NFF 8 FPO 6 Squared Circle Cancel Used at MWAYA. Two part strikes".

http://www.rhodesianstamps.net/Nyasaland_stamps/10%20Nyasaland%20Field%20Force/NFF%20007.jpg: "SG N3 & 4 . FPO 4 . 10 NOV 16 MWAYA".

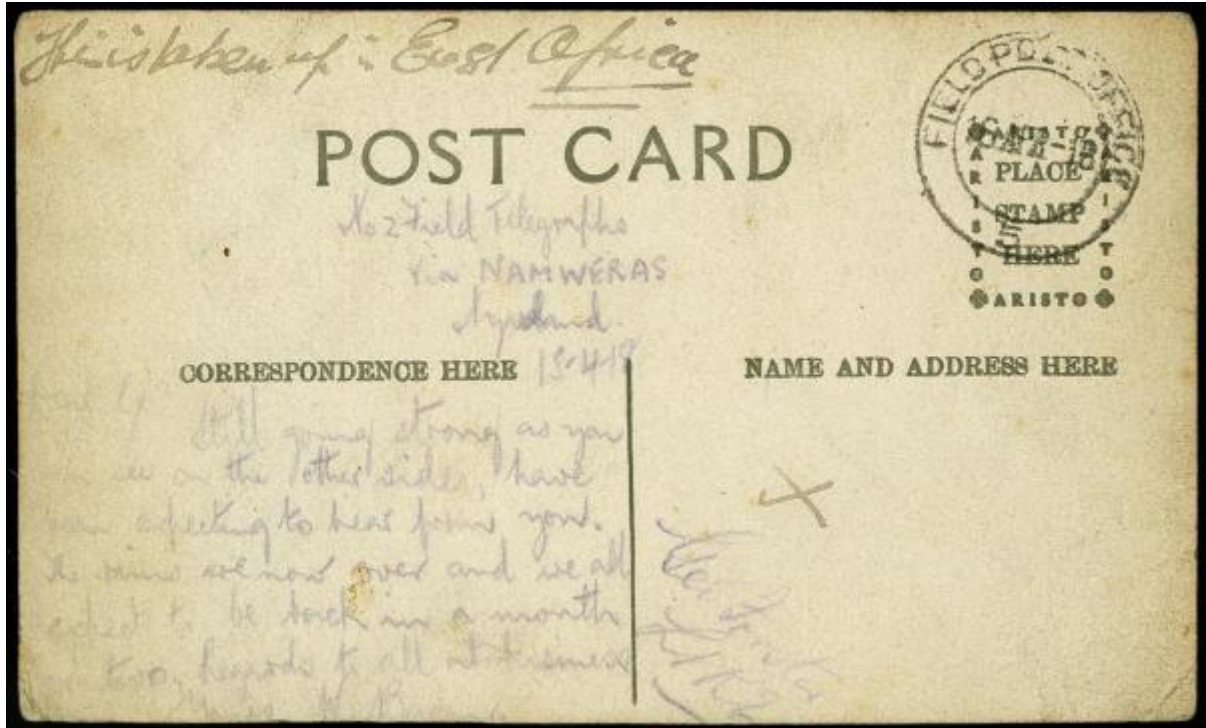


<https://www.cherrystoneauctions.com/auctionscans201012/153.jpg>



http://www.rhodesianstamps.net/Nyasaland_stamps/10%20Nyasaland%20Field%20Force/NFF%20010.jpg: "NFF 10 Postcard depicting a scene In German East Africa from Sgt. E. Alexander Northern Rhodesia Rifles Attached to D.Coy. Northern Rhodesia Police Counter-

igned by his superior Lt. Henniker Gotley. Cancelled by an extremely rare double circle .
ARMY POST OFFICE code 2 - 4 SEP 16 Received BASE 4 cachet, altered in manuscript to Base
1. With a Squared circle KASAMA transit. Sent to a family member written 18.8.16. Very few
covers are known with APO 2, thought to be in the Bismarckburg area. after it was occupied
on 8.6.16. Sgt. Alexander sent a very similar postcard on the same day. Illustrated as figure 9
in Drysdall's NFF book (Ex Sinton)".



<https://d1stvyu4yyf2jr.cloudfront.net/modules/auctions/17/pics/medium/7411c94f2da1435118d41ecbf39b906a659adc27.jpg>

Nyasaland Protectorate after 1916

1921-30 George V with watermark GA multiple



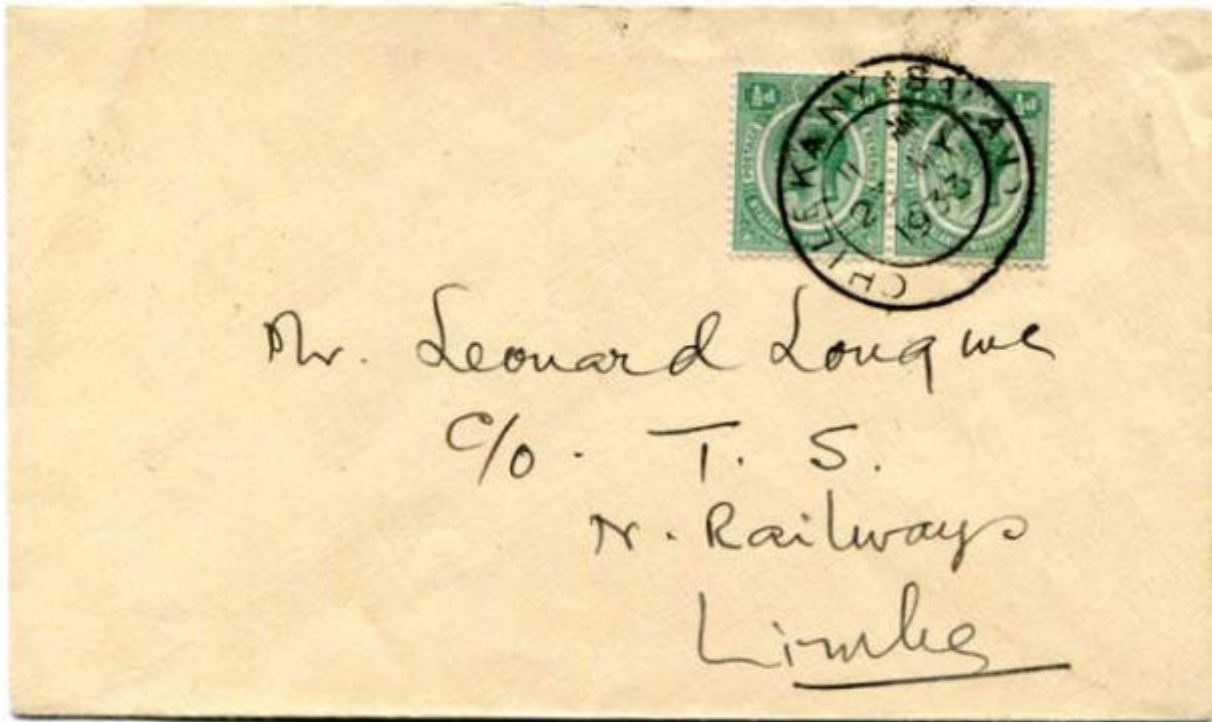
<https://www.cherrystonestamps.com/thumb.asp?filename=78369&dw=300&dh=300>:

“Nyasaland Protectorate. 1921-30 2sh, 4sh, 5sh and 10sh, overprinted or perforated Specimen, unused or dried gum, minor faults”.

1/2p green (Mi 23)



<https://i.pinimg.com/736x/32/bf/31/32bf3133cc595ba2bc6067e6fa9347b4--old-stamps-king-george.jpg>: “Nyasaland 1921 King George V Fine Used SG 100 Scott 25”. Cancelled BLANTYRE.



<http://www.postmarks.co.za/images/Chileka%201933%20cover.jpg>: "CHILEKA. Postal Agency under Blantyre. Temporary Office for air rally. Opened 1933 and 1936 to 1941 and 1953 to 1962".

1p red (Mi 24)



https://ebid.s3.amazonaws.com/upload_medium/9/9/8/1304004163-14224-0.jpg :
"Nyasaland 1921 SG101 1d Carmine Mounted Mint."

<http://thumbs.ebaystatic.com/images/g/S70AAOSw-YVXnDN3/s-l225.jpg>: "USED 1921 NYASALAND One 1 Penny Stamp KING GEORGE V. British Empire Colony RED". Cancelled ZOMBA.

<https://i.ebayimg.com/thumbs/images/g/K0oAAOSwdGFYqhC1/s-l225.jpg>. Cancelled LUCHENZA. Also":

<http://www.postmarks.co.za/PH%20Nyasaland%20Linthipe%20to%20Luchenza.htm>:
"LUCHENZA. 01.08.1910 to 04.07.1964".



<https://i.ebayimg.com/thumbs/images/g/F0wAAOSwNphWZZjh/s-l225.jpg>. Cancelled FORT JOHNSTON.

<https://i.ebayimg.com/thumbs/images/g/4IEAAOSw1DtXHemt/s-l225.webp>: "NYASALAND: (11999) KASUNGU postmark/cancel". Also:

<http://www.postmarks.co.za/PH%20Nyasaland%20Kasungu%20to%20Likoma.htm>:
"KASUNGU. June 1922 to 04.07.1964. Near Lilongwe".

<https://i.ebayimg.com/thumbs/images/g/TE0AAOSwWTRW1E0S/s-l225.jpg>: "NYASALAND: (11051) LUJIRE postmark/cancel". Also:

<http://www.postmarks.co.za/PH%20Nyasaland%20Lujeri%20to%20Mikolongwe.htm>:
"LUJERI [LUJIRE]. 10.01.1928 to 04.07.1964. Sub post office under Limbe".



<https://i.ebayimg.com/thumbs/images/g/ZMQAAOSwG-1WwE9O/s-l225.webp>:
"NYASALAND: (10717) DEDZA postmark/ cancel. dated 7 JUN 22".

<http://i.ebayimg.com/images/g/tFIAAOSw3mpXGNLM/s-l1600.jpg>: "NYASALAND: (11918) LIVINGSTONIA postmark/cancel".



<https://i.ebayimg.com/thumbs/images/g/ZM0AAOSwddNXghG5/s-l225.jpg>: “NYASALAND: (1001) LIWONDE postmark/cancel”.

<http://www.postmarks.co.za/images/Dowa%201933.jpg>: “DOWA. 1900 to 04.07.1964”.

<http://www.postmarks.co.za/images/Fort%20Lister%203.jpg>: “FORT LISTER; July 1893 to July 1899; October 1899 to 13.01.1902; 01.05.1927 to 30.06.1935”.



<http://www.postmarks.co.za/images/Lilongwe%201933%20bar.jpg>: “LILONGWE, 12.10.1905 to 04.07.1964”.



<http://www.rhodesianstudycircle.org.uk/wordpress/wp-content/uploads/2017/06/TNP.6-300x193.jpg>: “Ferry Steamers on Zambesi. 00/00/1929”.

1 1/2p orange (Mi 25, 1925)



<http://www.filat.ch/images/pictures/pinn096.jpg>: "NYASALAND 1921 KGV 1½D COLONIAS SPECIMEN".

<https://swmedia-4cd6.kxcdn.com/media/catalogue/Nyasaland/Postage-stamps/C12-i.jpg>.
1921 1 1/2d.



<http://www.rhodesianstudycircle.org.uk/wordpress/wp-content/uploads/2017/06/TNP.4-300x189.jpg>: "Limbe Station 01/06/1927".

<http://www.rhodesianstudycircle.org.uk/wordpress/wp-content/uploads/2017/01/AJS20.12-300x189.jpg>: "Tobacco Field, Nyasaland". Cancelled FORT JOHNSTON.

2p grey (Mi 26)



<https://i.pinimg.com/736x/72/19/48/7219483a959503d2470b5f8d2efa5dc1--script-lwren-scott.jpg>: "Nyasaland Protectorate 1921 Scott 28 2p gray "George V", Wmk 4 "Multiple".
Cancelled ZOMBA.

<https://i.ebayimg.com/thumbs/images/g/XgsAAOSwRgJXhI0f/s-l225.jpg>. Cancelled
LILONGWE.

<https://i.ebayimg.com/thumbs/images/g/XBAAAOSw4CFYny9s/s-l225.jpg>: "Nyasaland 1931
2d with KARONGA postmark".



<https://i.ebayimg.com/thumbs/images/g/JzkAAOSw3mpXF4tn/s-l225.jpg>. Cancelled FORT
MANNING.

<https://i.ebayimg.com/thumbs/images/g/NvkAAOSwMHdXRavg/s-l225.jpg>: "NYASALAND:
(12556) CHIRADZULU postmark/cancel". Also:

<http://www.postmarks.co.za/PH%20Nyasaland%20Chingale%20to%20churchill.htm>:
"CHIRADZULU. MOO 1949. opened 1914 to 1964".

<http://www.postmarks.co.za/images/Chinteche%205.jpg>: "CHINTECHE (CHINTNCHE)
(CHINTECHI), West Nyasa District. Opened 1905 to 1964".



<http://www.postmarks.co.za/images/Cholo%203.jpg>: "CHOLO. Post Office, opened 1896 to 1910 and 1921 to 1964".

<http://www.postmarks.co.za/images/Fort%20Johnstone%206.jpg>: "FORT JOHNSTON, 1891 to 04.07.1964".

<http://www.postmarks.co.za/images/Fort%20Lister%202%20manuscript.jpg>: "FORT LISTER; July 1893 to July 1899; October 1899 to 13.01.1902; 01.05.1927 to 30.06.1935".



<http://www.postmarks.co.za/images/Mkhoma%20Nyasaland%202.jpg>: "MKHOMA. December 1922 to 04.07.1964".

<http://www.postmarks.co.za/images/Mlanje%20Road%202.jpg>: "MLANJE ROAD. 02.01.1923 to 10.08.1925".

<http://www.postmarks.co.za/images/Mzimba%203.jpg>: "MZIMBA. 1905 to 04.07.1964".

3p lilac on yellow (Mi 27)



<https://www.picclickimg.com/d/l400/pict/252461668410/Nyasaland-1921-30-Scott-29.jpg>



<http://www.rhodesianstudycircle.org.uk/wordpress/wp-content/uploads/2017/04/AJS20.14-300x189.jpg>: "Village Scene, Nyasaland."

4p red and black on yellow (Mi 28)



<https://i.ebayimg.com/thumbs/images/g/y6wAAOSwtfhYtat4/s-l225.jpg> Cancelled
LILONGWE

<https://i.ebayimg.com/thumbs/images/g/EoQAAOSw8-tWZvNd/s-l225.webp>: "NYASALAND:
(6387) SANDAMA postmark/cancel". See:

<http://www.postmarks.co.za/PH%20Nyasaland%20Nkata%20to%20Port%20Herald.htm>:

NSWADZI, 01.04.1922 to 12.08.1923. Renamed to Sandama". And:

<http://www.postmarks.co.za/PH%20Nyasaland%20Ruarwe%20to%20Tshikwawa.htm>:

"SANDAMA. 26.07.1926 to 04.07.1964. Renamed from Nswadzi".



<http://www.airmails.co.uk/catalogue/99000onwards/100080.jpg>: "(Nyasaland) First acceptance of mail from Nyasaland for Kenya for carriage on the inaugural [flight]". Cancelled LIMBE.

6p purple and violet (Mi 29)



<https://swmedia-4cd6.kxcdn.com/media/catalogue/Nyasaland/Postage-stamps/C16-s.jpg>.
1921 6d.

<https://i.ebayimg.com/thumbs/images/g/yFCAAOSwG-1WwM1K/s-l225.jpg>: "NYASALAND: (10747) KOTA-KOTA postmark/cancel".

http://www.revenue-manstamps.co.uk/items_images/1351349684img962.jpg: "1921 S.G.107 6d. Dull & bright Purple. A fine Pair.". Fiscally used.

1Sh black on green (Mi 30)



<https://i.ebayimg.com/thumbs/images/g/AmAAAOSwTM5Y48Pp/s-l225.webp>: "NYASALAND SG108 1930 1/= BLACK/EMERALD MTD MINT".

2Sh blue and lilac on blue (Mi 31, 1927)



<https://i.pinimg.com/736x/0f/a3/64/0fa3648459aa3960050015f5601b68bb--king-george-british-colonial.jpg>: "Nyasaland Protectorate 1921 Scott 33 2sh ultramarine & dull violet/ blue "King ...".

http://www.rhodesianstamps.net/Nyasaland_stamps/05_Fiscals_Revenues_Postmarks/Postmarks/NYD_252_Limbe_Tels.jpg: "NYD 252. LIMBE TELS 23 AU 31 - On SG 109 Type 15".

<http://www.postmarks.co.za/images/Domira%20Bay%201931.jpg>: "DOMIRA BAY. 21.08.1931 to 30.04.1935".



<http://www.postmarks.co.za/images/Karonga%201931.jpg>: "KARONGA. 17.10.1893 to about December 1914; 21.08.1916 to 04.07.1964. North Nyasa District".

2Sh 6p red and black on blue (Mi 32, 1924)



<https://i.ebayimg.com/thumbs/images/g/-3cAAOSw5YNZrFJH/s-l225.jpg>: "Nyasaland 1926 KGV 2sh6d Grey-Black and Scarlet-Vermilion on PI Blue Used SG110j". Cancelled BLANTYRE.

<https://i.ebayimg.com/images/g/YpwAAOSwnF9Y72Yj/s-l300.jpg>: "Nyasaland-1921-33-Sg-110-2-6d..". Cancelled DOWA.



<https://keyplater.files.wordpress.com/2014/10/ny394.jpg>. Cancelled FORT JOHNSTON.

4Sh black and red (Mi 33, 1928)



https://www.picclickimg.com/d/l400/pict/311812602515_HERRICKSTAMP-NYASALAND-Sc-35-1921-King-George-V.jpg : "HERRICKSTAMP NYASALAND Sc.# 35 1921 King George V NH".

https://tbn.bidorbuy.co.za/image/fetch/dpr_1.0,f_auto,t_btbnx/https://img.bidorbuy.co.za/image/upload/v1494331463/user_images/859/1764859/170509140442_IMG%2C25.SATER_DAG.2_0002_NEW.4sj.jpg: "Nyasaland Protectorate - Revenue/postage VFU 4/- stamp 1927 - SG 111 CV". Cancelled MLANJE.

5Sh red and sea green on yellow (Mi 34, 1929)



<https://swmedia-4cd6.kxcdn.com/media/catalogue/Nyasaland/Postage-stamps/D8-s.jpg>

1921 5/-.

<https://www.sandafayre.com/stockimages/11247344.jpg> Cancelled BLANTYRE.

<https://i.ebayimg.com/thumbs/images/g/u3YAAOSwKBVZrVss/s-l225.jpg>. Cancelled LIMBE

10Sh red and green on green (Mi 35, 1928)



<https://i.ebayimg.com/thumbs/images/g/eL4AAOxyc2pTYI8H/s-l225.jpg> : "NYASALAND SG113g 1927 10/= GREEN & SCARLET ON EMERALD PAPER FISCALLY USED".

<https://i.ebayimg.com/thumbs/images/g/rSAAOSwtfhYoblj/s-l225.jpg> Nyasaland 1926 10s green & red/pale emerald Fine Used Stamp SG 113".

<http://www.britishcommonwealthstamps.com/wp-content/uploads/2015/05/CF481E-250x250.jpg>: "NYASALAND 1921 10/- . SG 113 Short Perf. Fine Used.". Cancelled BLANTYRE.



<https://i.ebayimg.com/thumbs/images/g/0uwAAOSwgkRVSmhJ/s-l225.jpg>: "BC NYASALAND PROTECTORATE 1921-30 KGV Sc 37 SG 113 TOP VALUE USED".



<https://cdn.globalauctionplatform.com/5ae75de9-1aa6-4a06-a67b-a731012096d3/0e5a8200-8cf4-4f7e-a10c-a75100e0dc1f/540x360.jpg>: "Telegraph Stamps Commonwealth Issues Nyasaland Selection (8) of KGV 'keyplate' issues with telegraphic cancels including 2/- and 4/- with rare "dedza a.t.t.co" c.d.s.,".

Postal stationery



<http://www.chisrainey.com/images/7007.jpg>: "NYASALAND KGV 1/2d stationery postcard overprinted SPECIMEN Additional handstamped Colonial".

1933-1937 Temporary Postage Station during the Tobacco Season

<http://www.postmarks.co.za/PH%20Nyasaland%20Linthipe%20to%20Luchenza.htm>:
'LOMBADZI; 28.06.1933 to 05.07.1933; 27.04.1934 to 01.08.1934; 27.05.1935 to 09.08.1935;
22.05.1936 to 04.07.1936; 17.05.1937 to 30.07.1937; Temporary post office for the tobacco
buying season".

1934 George V and Leopard



https://www.freestampcatalogue.nl/media/catalog/product/cache/1/small_image/400x400/040ec09b1e35df139433887a97daa66f/n/r/nrp0036.jpg

1/2p green (Mi 36)



http://www.rhodesianstamps.net/Nyasaland_stamps/05_Fiscals_Revenues_Postmarks/Postmarks/NYD_260_Njuli.jpg: “NYD 260 NJULI 7 DEC 34 Type 15 First period of use Rare”

https://www.picclickimg.com/d/l400/pict/122634226213/_Nyasaland-P2709B-Kgv-Leopard-1-2D-BI-Of-4.jpg

1p dark brown (Mi 37)



<https://i.ebayimg.com/thumbs/images/g/Nm8AAOSwSypY9MM~/s-l225.webp>: “Nyasaland 1934 1d with MKHOMA postmark”.

<http://www.postmarks.co.za/images/Chinteche%201938.jpg>: “CHINTECHE (CHINTNCHE) (CHINTECHI). West Nyasa District. Opened 1905 to 1964”.



<https://i.ebayimg.com/thumbs/images/g/S9AAAOSwRUhY9MMu/s-l225.jpg>

1 1/2p carmine (Mi 38)

2p grey (Mi 39)



http://www.rhodesianstamps.net/Nyasaland_stamps/05_Fiscals_Revenues_Postmarks/Postmarks/NYD_250_Likoma_Island.jpg: “NYD 250. LIKOMA ISLAND 29 JA 35 - Type 16 Latest recorded date”.

http://www.rhodesianstamps.net/Nyasaland_stamps/05_Fiscals_Revenues_Postmarks/Postmarks/NYD_266_SHR_TPO.jpg: “NYD 266. S.H.R. T.P.O. 30 12 34 Type 14 Second period”.



http://www.rhodesianstamps.net/Nyasaland_stamps/05_Fiscals_Revenues_Postmarks/Postmarks/NYD_268_TPO.jpg: “NYD 268. T.P.O. Type 15”.

<http://www.postmarks.co.za/images/Loudon%201.jpg> : “LOUDON. 01.08.1934 to 31.03.1936; Renamed to Embangweni”.



<https://i.ebayimg.com/thumbs/images/g/I1QAAOSwnJVZo~YZ/s-l225.jpg>

3p ultramarine (Mi 40); 4p lilac red (Mi 41, 20/5/1935): no specific postmarks

6p violet (Mi 42)



<http://i.ebayimg.com/images/g/SAMAAOSwwE5WYxny/s-l1600.gif>: "NYASALAND: (6307)
BALAKA postmark/cancel".

9p brown olive (Mi 43, 20/5/1935): no specific postmark

1Sh orange and black (Mi 44, 1935)



<http://www.postmarks.co.za/images/Chiradzulu%201934.JPG>: "CHIRADZULU. MOO 1949.
opened 1914 to 1964".

1935 (6 May) 25 years King George V



https://www.freestampcatalogue.nl/media/catalog/product/cache/1/small_image/400x400/040ec09b1e35df139433887a97daa66f/n/r/nrp0045.jpg



<http://i.ebayimg.com/images/g/wxkAAOSw5cNYilfr/s-l1600.jpg>. With Cancels LILONGWE and BLANTYRE.

1p grey and ultramarine (Mi 45); 2p blue grey and green (Mi 46); 3p violet blue and red
brown (Mi 47); 1s lilac and grey (Mi 48)



<http://www.postmarks.co.za/images/Vua%203.jpg>: "VUA. 08.02.1916 to 09.03.1916; May 1929 to 29.11.1949".



[http://www.rhodesianstamps.net/Nyasaland_stamps/06_Postal_Stationery_Postal_History/NYD_356\(1\)_1935_First_Flight_cover.jpg](http://www.rhodesianstamps.net/Nyasaland_stamps/06_Postal_Stationery_Postal_History/NYD_356(1)_1935_First_Flight_cover.jpg)

[http://www.rhodesianstamps.net/Nyasaland_stamps/06_Postal_Stationery_Postal_History/NYD_356\(2\)_1935_First_Flight_cover.jpg](http://www.rhodesianstamps.net/Nyasaland_stamps/06_Postal_Stationery_Postal_History/NYD_356(2)_1935_First_Flight_cover.jpg)

“Illustrated envelope with First Flight cachet - Cancelled Blantyre 5 AUG 35 - Backstamped Beira arrival 5 AUG. Signed acknowledgement of receipt with Mozambique 30c applied to reverse, cancelled BEIRA 6 AUG 35 - Scarce combination”.



<http://www.chrisrainey.com/images/5897.jpg>

1937 (12/5), King George VI, with Queen Elisabeth, 3 postage stamps.

(Mi 49-51)



https://www.freestampcatalogue.nl/media/catalog/product/cache/1/small_image/400x400/040ec09b1e35df139433887a97daa66f/n/r/nrp0049.jpg



<http://www.postmarks.co.za/images/Balaka%20%20cover.jpg>: "BALAKA. MOO from 1947. opened 1934 to 1964".

1938 (1/1), Regular stamps, 18 postage stamps. (Mi 52-69).



https://www.freestampcatalogue.nl/media/catalog/product/cache/1/small_image/400x400/040ec09b1e35df139433887a97daa66f/n/r/nrp0052.jpg



<http://www.postmarks.co.za/images/Salima%20.jpg:M>: “SALIMA. 23.08.1934 to 04.07.1964”.

http://www.rhodesianstamps.net/Nyasaland_stamps/05_Fiscals_Revenues_Postmarks/Postmarks/NYD_292_Ncheu.jpg: “NYD 292 NCHEU 25 11 44 Type 14 in red Latest recorded date”.



<https://i.ebayimg.com/thumbs/images/g/rxIAAOSwCU1Yny-C/s-l225.jpg>: “Nyasaland 1938 1d with EKWENDENI postmark”. Also:

<http://www.postmarks.co.za/PH%20Nyasaland%20Dedza%20to%20Ekwendeni.htm>
“EKWENDENI, 23.06.1933 to 04.07.1964, Mombra district”.

<http://www.postmarks.co.za/images/Tekerani%20.jpg>: “TEKERANI. 01.08.1934 to 04.07.1964”.

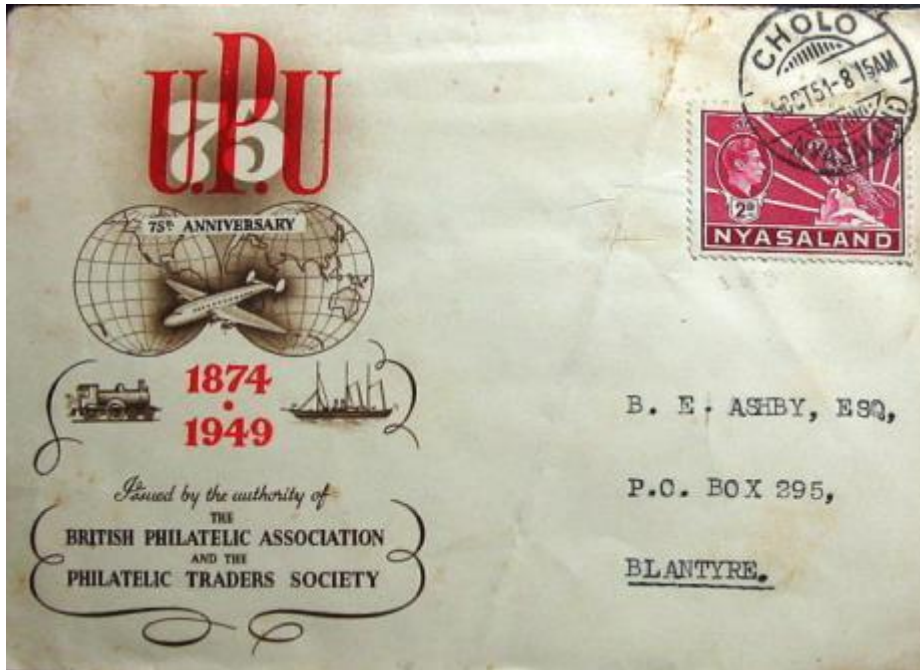


<http://www.postmarks.co.za/images/Namadzi%20cover.jpg>: "NAMADZI. 16.05.1932 to 04.07.1964".



http://www.rhodesianstamps.net/Nyasaland_stamps/05_Fiscals_Revenues_Postmarks/Postmarks/NYD_283_Chileka.jpg: "NYD 283 CHILEKA 27 DEC 38. Type 15 – Rare".

<https://www.picclickimg.com/d/l400/pict/191933369576/Nyasaland-1938-44-SG133-2d-Grey-KGVI-Used-D30333.jpg>. Cancelled LILONGWE.



<http://www.postmarks.co.za/images/Cholo%20cover.jpg>: "CHOLO. Post Office. opened 1896 to 1910 and 1921 to 1964".



<http://www.postmarks.co.za/images/Kota%20Kota%201943.jpg>: "KOTA KOTA. 1894 to 04.07.1964".

<http://www.postmarks.co.za/images/Likoma%20island%204.jpg>: "LIKOMA ISLAND. 1893 to 01.10.1899; 01.12.1934 to 04.07.1964".

<http://www.postmarks.co.za/images/Mlanje%201945.jpg>: "MLANJE (MILANJI). 16.08.1893 to 01.08.1896; 09.06.1910 to 04.07.1964; Renamed Fort Anderson between 1906 and 1910".



<http://www.postmarks.co.za/images/Namwera%20%20cover.jpg>: "NAMWERA. April 1925 to 04.07.1964".



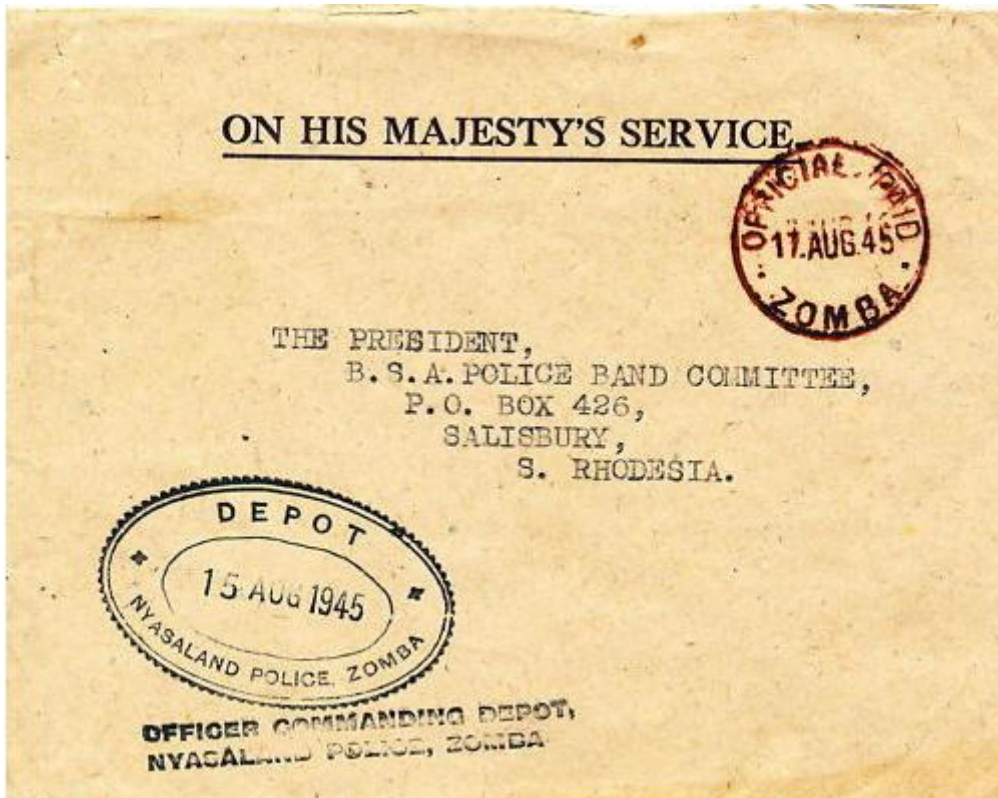
<http://www.postmarks.co.za/images/Karonga%201945.jpg>: "KARONGA; 17.10.1893 to about December 1914; 21.08.1916 to 04.07.1964. North Nyasa District".

1943 cover



<http://www.three-centuries.co.uk/images/stock/20100127colonial39.jpg>

1945 Cover



<http://www.postmarks.co.za/images/Zomba%20opd4%20cover.jpg>

1945 (1/9), George VI, 14 postage stamps (Mi 70-83).



https://www.freestampcatalogue.nl/media/catalog/product/cache/1/small_image/400x400/040ec09b1e35df139433887a97daa66f/n/r/nrp0070.jpg



<http://i309.photobucket.com/albums/kk398/johnthebarrel/GoldCoastetc25.jpg> Cancelled
LIKHOMA.



[http://www.rhodesianstamps.net/Nyasaland_stamps/05_Fiscals_Revenues_Postmarks/Postmarks/NYD_300\(1\)_SG145_KGVI_Pmks.jpg](http://www.rhodesianstamps.net/Nyasaland_stamps/05_Fiscals_Revenues_Postmarks/Postmarks/NYD_300(1)_SG145_KGVI_Pmks.jpg): "1d used at KOTA KOTA, NTAKATAKA".

[http://www.rhodesianstamps.net/Nyasaland_stamps/05_Fiscals_Revenues_Postmarks/Postmarks/NYD_300\(2\)_SG145_KGVI_Pmks.jpg](http://www.rhodesianstamps.net/Nyasaland_stamps/05_Fiscals_Revenues_Postmarks/Postmarks/NYD_300(2)_SG145_KGVI_Pmks.jpg): "SG 145 1d used at ...MKHOMA".

[http://www.rhodesianstamps.net/Nyasaland_stamps/05_Fiscals_Revenues_Postmarks/Postmarks/NYD_300\(3\)_SG145_KGVI_Pmks.jpg](http://www.rhodesianstamps.net/Nyasaland_stamps/05_Fiscals_Revenues_Postmarks/Postmarks/NYD_300(3)_SG145_KGVI_Pmks.jpg): "SG 145 1d used at ...SALIMA & VUA".



http://www.rhodesianstamps.net/Nyasaland_stamps/05_Fiscals_Revenues_Postmarks/Postmarks/NYD_288_Limbe_CSO_skeleton.jpg: “NYD 288 LIMBE C.S.O. 10 NO 51 – Type 17 First period”.

[http://www.rhodesianstamps.net/Nyasaland_stamps/05_Fiscals_Revenues_Postmarks/Postmarks/NYD_301\(1\)_SG146_KGVI_Pmks.jpg](http://www.rhodesianstamps.net/Nyasaland_stamps/05_Fiscals_Revenues_Postmarks/Postmarks/NYD_301(1)_SG146_KGVI_Pmks.jpg)

[http://www.rhodesianstamps.net/Nyasaland_stamps/05_Fiscals_Revenues_Postmarks/Postmarks/NYD_301\(2\)_SG146_KGVI_Pmks.jpg](http://www.rhodesianstamps.net/Nyasaland_stamps/05_Fiscals_Revenues_Postmarks/Postmarks/NYD_301(2)_SG146_KGVI_Pmks.jpg)

[http://www.rhodesianstamps.net/Nyasaland_stamps/05_Fiscals_Revenues_Postmarks/Postmarks/NYD_301\(3\)_SG146_KGVI_Pmks.jpg](http://www.rhodesianstamps.net/Nyasaland_stamps/05_Fiscals_Revenues_Postmarks/Postmarks/NYD_301(3)_SG146_KGVI_Pmks.jpg)

[http://www.rhodesianstamps.net/Nyasaland_stamps/05_Fiscals_Revenues_Postmarks/Postmarks/NYD_301\(4\)_SG146_KGVI_Pmks.jpg](http://www.rhodesianstamps.net/Nyasaland_stamps/05_Fiscals_Revenues_Postmarks/Postmarks/NYD_301(4)_SG146_KGVI_Pmks.jpg)

[http://www.rhodesianstamps.net/Nyasaland_stamps/05_Fiscals_Revenues_Postmarks/Postmarks/NYD_301\(5\)_SG146_KGVI_Pmks.jpg](http://www.rhodesianstamps.net/Nyasaland_stamps/05_Fiscals_Revenues_Postmarks/Postmarks/NYD_301(5)_SG146_KGVI_Pmks.jpg)

[http://www.rhodesianstamps.net/Nyasaland_stamps/05_Fiscals_Revenues_Postmarks/Postmarks/NYD_301\(6\)_SG146_KGVI_Pmks.jpg](http://www.rhodesianstamps.net/Nyasaland_stamps/05_Fiscals_Revenues_Postmarks/Postmarks/NYD_301(6)_SG146_KGVI_Pmks.jpg)

For all: “SG 146 1½d used at BALAKA, CHIKWAWA, CHIROMO, CHOLO, DEDZA, FORT JOHNSTON, FORT MANNING, MPONELA, NCHEU, MKHOMA, NTAKATAKA, PORT HERALD & TPO SOUTH”.



<http://www.postmarks.co.za/images/Chikwawa%206.jpg>: “CHIKWAWA. Renamed from Tshikwawa . Opened 1900 to 1964”.

<http://www.postmarks.co.za/images/Katete%201.jpg>: “KATETE (RIVER). 1903; 21.08.1950 to 16.10.1957. Renamed Champira”.

<http://www.postmarks.co.za/images/Monkey%20Bay%20Skeleton.jpg>: “MONKEY BAY. 01.11.1950 to 04.07.1964”.



<http://www.postmarks.co.za/images/Njakwa%202.jpg>: "NJAKWA. 22.08.1947 to 30.06.1954.
Moved to Rumpi".

<http://www.postmarks.co.za/images/Ntondwe%204.jpg>: "NTONDWE. 01.05.1911 to
13.03.1920; 09.11.1932 to 04.07.1964".



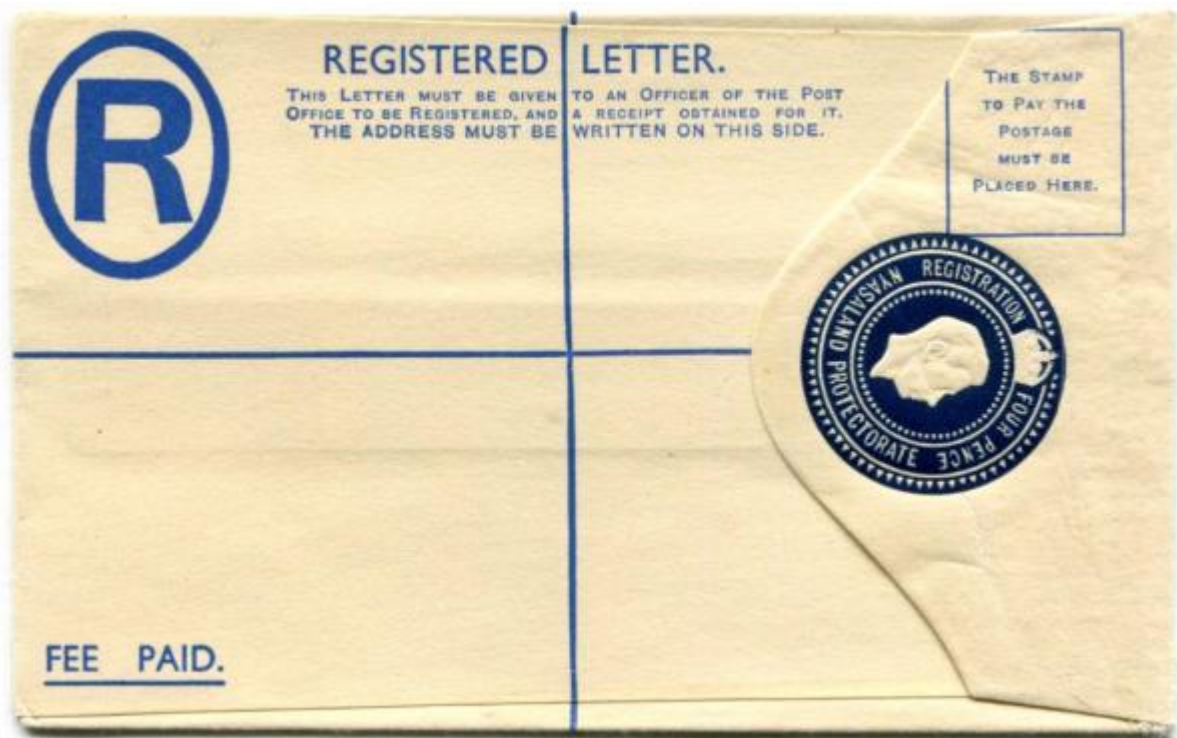
<http://www.postmarks.co.za/images/Dowa%201947.jpg>: "DOWA, 1900 to 04.07.1964".



<http://www.postmarks.co.za/images/Zomba%2014%20cover.jpg>: "ZOMBA. June 1891 to
04.07.1964".



<http://www.chrisrailey.com/images/4171.jpg>



<http://www.chrisrailey.com/images/7252.jpg>



http://www.rhodesianstamps.net/Nyasaland_stamps/05_Fiscals_Revenues_Postmarks/Postmarks/NYD_290_Mzuzu_skeleton.jpg: “NYD 290 MZUZU AP 50 Type 17 Part strike”.



<http://www.postmarks.co.za/images/Nkata%20Bay%204.jpg>: “NKATA (BAY). 02.11.1899 to 1906; 11.06.1934 to 04.07.1964”.

1946 (16/12), Victory in WWII, 2 postage stamps (Mi 84-85).



https://www.freestampcatalogue.nl/media/catalog/product/cache/1/small_image/400x400/040ec09b1e35df139433887a97daa66f/n/r/nrp0084.jpg



<http://www.postmarks.co.za/images/Port%20Herald%20Nyasaland%20cover.jpg>: "PORT HERALD. 1893 to 04.07.1964".



<http://www.stevedrewett.com/images/12049.jpg>. Postmark MALAMULO..

1947 (20/10), Leopard and King, 1 postage stamp (Mi 86).



https://www.freestampcatalogue.nl/media/catalog/product/cache/1/small_image/400x400/040ec09b1e35df139433887a97daa66f/n/r/nrp0086.jpg

http://www.rhodesianstamps.net/Nyasaland_stamps/05_Fiscals_Revenues_Postmarks/Postmarks/NYD_308_Mikolongwe.jpg: "MIKOLONGWE 12 NOV 48 Type 14L".

http://www.rhodesianstamps.net/Nyasaland_stamps/05_Fiscals_Revenues_Postmarks/Postmarks/NYD_309_Njakwa.jpg : "NJAKWA 13 FE 1948 Type 16 – Rare".



http://www.rhodesianstamps.net/Nyasaland_stamps/05_Fiscals_Revenues_Postmarks/Postmarks/NYD_310_TPO_South.jpg: "T.P.O. SOUTH 23 FEB 52 Type 15n".

<http://www.postmarks.co.za/images/Mlanda%20Skeleton.jpg>: "MLANDA. 17.05.1951 to 04.07.1964. Postal agency under Dedza".



<http://www.postmarks.co.za/images/Limbe%20CSO%201.jpg>: "LIMBE CENTRAL SORTING OFFICE. 26.09.1951 to 04.07.1964".

<http://www.postmarks.co.za/images/Palombe%203.jpg>: "PALOMBE. 01.07.1935 to 04.07.1964".

1948 (15/12), Silver Wedding, 2 postage stamps (Mi 87-88).



https://www.freestampcatalogue.nl/media/catalog/product/cache/1/small_image/400x400/040ec09b1e35df139433887a97daa66f/n/r/nrp0087.jpg

1949 (21/11), 75 Years UPU, 4 postage stamps (Mi 89-92).



https://www.freestampcatalogue.nl/media/catalog/product/cache/1/small_image/400x400/040ec09b1e35df139433887a97daa66f/n/r/nrp0089.jpg



<http://www.postmarks.co.za/images/Mzuzu%201.jpg>: "MZUZU. 12.10.1949 to 04.07.1964".



<http://www.postmarks.co.za/images/Chikawa%20%20cover.jpg>. Cancelled CHIKWAWA.

1950 (1/7), Postage Due stamps, 5 values.



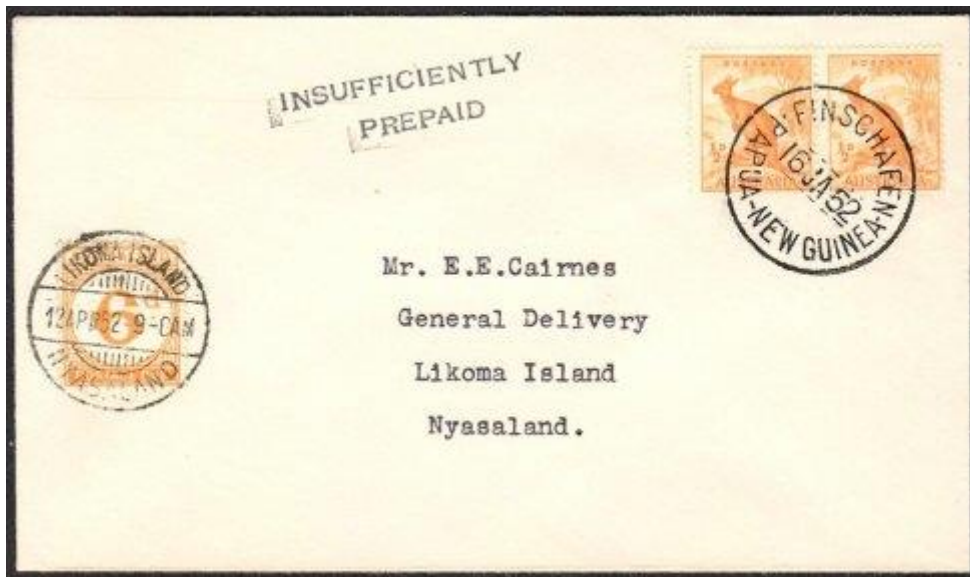
https://www.freestampcatalogue.nl/media/catalog/product/cache/1/small_image/400x400/040ec09b1e35df139433887a97daa66f/n/r/nrpt001.jpg



<https://i.ebayimg.com/thumbs/images/g/JlwAAOSwg2xZeyub/s-l225.jpg> Cancelled CHOLO.



http://www.rhodesianstamps.net/Nyasaland_stamps/06_Postal_Stationery_Postal_History/NYD_371_Postage_Due_cover.jpg: "Envelope from Somaliland - Posted 9 JA 52 with Nyasaland 1d & 3d Postage dues Cancelled LIKOMA ISLAND 12 APR 52".



http://www.rhodesianstamps.net/Nyasaland_stamps/06_Postal_Stationery_Postal_History/NYD_372_Postage_Due_cover.jpg: "Envelope from FINSCHAFEN PAPUA NEW GUINEA 16 JA 52 with Nyasaland 6d Postage due Cancelled LIKOMA ISLAND 12 APR 52 - The rarest due on cover".

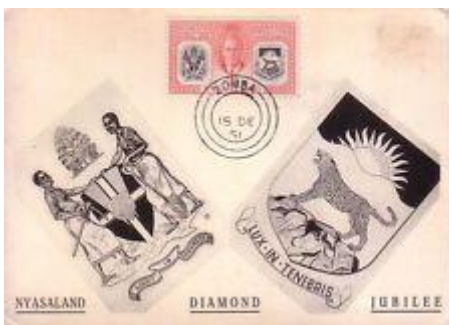
1951 (15/5), 60 Years British Protectorate Nyasaland, 4 postage stamps (Mi 93-96).



https://www.freestampcatalogue.nl/media/catalog/product/cache/1/small_image/400x400/040ec09b1e35df139433887a97daa66f/n/r/nrp0093.jpg



<http://www.postmarks.co.za/images/Namitete%20%20cover.jpg>: "NAMITETE. 03.10.1950 to 04.07.1964".



<https://i.ebayimg.com/thumbs/images/g/D10AAOSw9fNZfOSx/s-l225.jpg>: . Cancelled ZOMBA.



<http://www.postmarks.co.za/images/Malamulo%20%20cover.jpg>: "MALAMULO.
01.10.1935 to 18.04.1952".

1953 (30/5), Exhibition Cecil Rhodes, 1 postage stamp (Mi 97).



https://www.freestampcatalogue.nl/media/catalog/product/cache/1/small_image/400x400/040ec09b1e35df139433887a97daa66f/n/r/nrp0097.jpg

1953 (2/6), Coronation Elisabeth II, 1 postage stamp (Mi 98).



https://www.freestampcatalogue.nl/media/catalog/product/cache/1/small_image/400x400/040ec09b1e35df139433887a97daa66f/n/r/nrp0098.jpg



<https://www.picclickimg.com/d/l400/pict/372043346685/Nyasaland-1953-Qeii-Coronation-4-Stamps.jpg> Cancelled LIMBE.



[http://www.rhodesianstamps.net/Nyasaland_stamps/06 Postal Stationery Postal History/NYD 362 Commercial use QEII Coronation.jpg](http://www.rhodesianstamps.net/Nyasaland_stamps/06_Postal_Stationery_Postal_History/NYD_362_Commercial_use_QEII_Coronation.jpg): "Envelope with a Strip of three 1953 Coronation Stamps sent Registered to Salisbury Cancelled ZOMBA 19 Ju 53 - Limbe transit backstamp and Oval SALISBURY 22 JUN 1953 Arrival in violet".

1953 (1/9), Regular stamps, with EII, 15 postage stamps (Mi 99-113).



https://www.freestampcatalogue.nl/media/catalog/product/cache/1/small_image/400x400/040ec09b1e35df139433887a97daa66f/n/r/nrp0099.jpg



<http://www.postmarks.co.za/images/Njuli%201953.jpg>: “NJULI. 04.10.1932 to 31.12.1935.
07.07.1952 to 04.07.1964. Postal agency under Limbe”.



[http://www.rhodesianstamps.net/Nyasaland_stamps/06 Postal Stationery Postal History/NYD 364 Christmas concession rate.jpg](http://www.rhodesianstamps.net/Nyasaland_stamps/06_Postal_Stationery_Postal_History/NYD_364_Christmas_concession_rate.jpg): "1957 Christmas Concession Rate NYD 364 Envelope with QEII 1d Posted unsealed to UK Cancelled CHOLO 17 NOV 57".

<http://www.postmarks.co.za/images/Namitete%201953.jpg>: "NAMITETE. 03.10.1950 to 04.07.1964".



<http://www.postmarks.co.za/images/Embangweni%206.jpg>: "EMBANGWENI, 27.05.1936 to 04.07.1964. Renamed from Loudon".

<http://www.postmarks.co.za/images/Deep%20Bay%204.jpg>: "DEEP BAY, 25.07.1895 to 06.08.1900; October 1900 to 02.11.1900; 01.01.1950 to 04.07.1964. Renamed to Livingstonia (1912)'. Reopened 1950 as a postal agency under Livingstonia".



<http://www.postmarks.co.za/images/Domasi%20%20cover.jpg>: "DOMASI, 08.08.1950 to 04.07.1964".

ca 1953 Stationery



<https://i.ebayimg.com/thumbs/images/g/7PEAAOSw9GhYlfHM/s-l225.jpg>

1953 Revenue



http://www.rhodesianstamps.net/Nyasaland_stamps/05_Fiscals_Revenues_Postmarks/Fiscals_Revenues/NYD_210_QEII_2d_Revenue.jpg : “1953 Revenue Overprints. NYD 210 B&H 8 2d Overprinted REVENUE Used pair”.

<https://i.ebayimg.com/thumbs/images/g/ftIAOSwNqtZnj7K/s-l225.jpg>

1955 Revenue



http://www.rhodesianstamps.net/Nyasaland_stamps/05_Fiscals_Revenues_Postmarks/Fiscals_Revenues/NYD_215_QEII_Revenue.jpg : “1955 QEII Revenue NYD 215 B&H 21 2d Revenue On part of a receipt”.

<http://www.bephila.com/sites/default/files/auction-houses/Grosvenor/073/grosvenor-auction-73-nyasaland-stamps-and-postal-history-1263.jpg>



http://www.rhodesianstamps.net/Nyasaland_stamps/05_Fiscals_Revenues_Postmarks/Fiscals_Revenues/NYD_220_5s_Employment_stamp.jpg: "NYD 220. B&H 2 5/- in Green Mint".

http://www.rhodesianstamps.net/Nyasaland_stamps/05_Fiscals_Revenues_Postmarks/Fiscals_Revenues/NYD_221_5s_Employment_stamp.jpg: "NYD 221. B&H 2. 5/- in Green. Used".

Postal agencies opened prior to 1953, but without illustrations yet:

(information: www.postmarks.co.za):

CAPE MACLEAR, Monkey Bay area, opened 1950 to 1950.

KAMITETE; 27.01.1951 to closed by 1954.

KAPENI, 02.05.1951 to 27.06.1956. Postal agency under Ncheu.

MAKWANGARA. 02.05.1951 to 24.07.1961, Postal agency under Ncheu.

MLANGENI, 01.12.1930 to 04.07.1964. Post Office from 1955.

M'BWELWA, 27.10.1952 to 04.07.1964. Postal agency under Embangweni.

MWANZA, 14.10.1937 to 04.07.1964. Renamed from Neno.

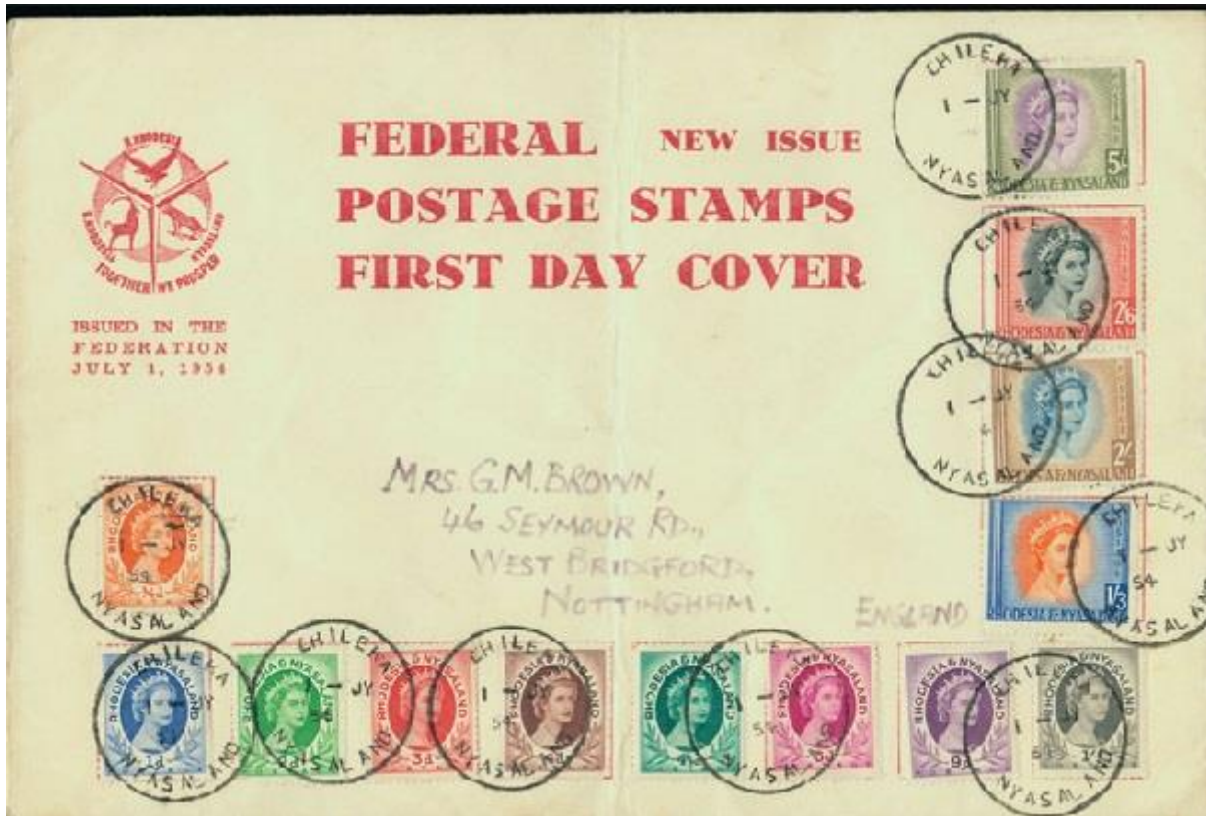
NATHENJE, 02.05.1951; 19.05.1952 to 02.08.1952. Temporary post office.

SONGANI LETTER BOX. 01.04.1950 to 31.07.1950. Letter box on Indian market 10km from Zomba.

In 1953-1963 Nyasaland was part of the Federation of Rhodesia and Nyasaland, see APH 24.

Postmarks in Nyasaland during the Federation Period 1953-1963

1954 Series



<http://www.postmarks.co.za/images/Chileka%20%20cover.jpg>: "CHILEKA. Postal Agency under Blantyre. Temporary Office for air rally,. opened 1933 and 1936 to 1941 and 1953 to 1962".



<http://www.postmarks.co.za/images/Mlanda%201955.jpg>: "MLANDA. 17.05.1951 to 04.07.1964. Postal agency under Dedza".

<http://www.postmarks.co.za/images/Neno%201960.jpg>: "NENO. 1905 to 30.10.1906; 20.02.1909 to 15.11.1923; 17.07.1952 to 04.07.1964. Postal agency under Mwanza from 1952".



<http://www.postmarks.co.za/images/Rumpi%20skeleton.jpg>: “RUMPI. 01.07.1954 to 04.07.1964”.



<http://www.postmarks.co.za/images/Dedza%206.jpg>: “DEDZA, 01.01.1899 to 01.09.1901; 1905 to 04.07.1964”.



<http://www.postmarks.co.za/images/Fort%20Hill%204%20cover.jpg>: "FORT HILL, 1896 to 01.01.1899; July 1896 to 07.04.1903; 15.12.1950 to 04.07.1964".



<http://www.postmarks.co.za/images/Fort%20Johnston%20bOW.jpg>: "FORT JOHNSTON; 1891 to 04.07.1964".

<http://www.postmarks.co.za/images/Visanza%203.jpg>: "VISANZA. 12.10.1953 to 04.07.1964. Postal agency under Lilongwe".



<http://www.postmarks.co.za/images/Churchill%20Road.jpg>: "CHURCHILL ROAD, Sub Post Office of Limbe, Opened 1954 to 1958".

<http://www.postmarks.co.za/images/Mponela%20.jpg>: "MPONELA. 15.12.1950 to 04.07.1964".

<http://www.postmarks.co.za/images/Limbe%207%20cover.jpg>: "LIMBE. 01.03.1909 to 04.07.1964".



<http://www.postmarks.co.za/images/Kasinje%201961.jpg>: “KASINJE. 16.11.1956 to 03.11.1960; 04.08.1961 to 04.07.1964. Postal agency under Nkatataka. Replaced Sharpe Vale”.

<http://www.postmarks.co.za/images/Mkhoma%20Nyasaland%206.jpg>: “MKHOMA. December 1922 to 04.07.1964”.



<http://www.postmarks.co.za/images/Lilongwe%208%20cover.jpg>: “LILONGWE. 12.10.1905 to 04.07.1964”.



<http://www.postmarks.co.za/images/Chiromo%201960.jpg>: “CHIROMO. Renamed from Tshiromo. HQ of Ruo district. opened 1898 to 1964”.



<http://www.postmarks.co.za/images/Katete%20River%203%20cover.jpg>: “KATETE (RIVER), 1903; 21.08.1950 to 16.10.1957. Renamed Champira”.



<http://www.postmarks.co.za/images/Mlanje%2010%20cover.jpg>: “MLANJE (MILANJI). 16.08.1893 to 01.08.1896; 09.06.1910 to 04.07.1964 . Renamed Fort Anderson between 1906 and 1910”.



<http://www.postmarks.co.za/images/Kafukule%20%20cover.jpg>: "KAFUKULE. 07.05.1953 to 04.07.1964; Postal agency under Mzimba".



<http://www.postmarks.co.za/images/LIMBE%20CSO%20R1%20cover.jpg>: "LIMBE CENTRAL SORTING OFFICE. 26.09.1951 to 04.07.1964".



<http://www.postmarks.co.za/images/Luchenza%20%20cover.jpg>: "LUCHENZA. 01.08.1910 to 04.07.1964".



<http://www.postmarks.co.za/images/Limbe%20%20cover.jpg>: "LIMBE, 01.03.1909 to 04.07.1964".

1959 series



<http://www.postmarks.co.za/images/Balaka%20bow%201963.jpg>: "BALAKA. MOO from 1947. opened 1934 to 1964".

<http://www.postmarks.co.za/images/Florence%20Bay.jpg>: "FLORENCE BAY, 21.01.1958 to 04.07.1964, Postal agency under Livingstonia".



<http://www.postmarks.co.za/images/Mikolongwe%206.jpg>: "MIKOLONGWE. 01.11.1910 to 04.07.1964".

<http://www.postmarks.co.za/images/Tembwe%201963.jpg>: "TEMBWE. 28.02.1956 to 04.07.1964".



<http://www.postmarks.co.za/images/Chiradzulu%20cover%20bow.jpg>: "CHIRADZULU, MOO 1949, opened 1914 to 1964".

<http://www.postmarks.co.za/images/Ntakataka%201962%20cover.jpg>: "NTAKATAKA. 27.08.1934 to 04.07.1964".



<http://www.postmarks.co.za/images/Chikwina%201963.jpg>: “CHIKWINA. Postal Agency under Mzuzu. Opened 1951 to 1964”.

<http://www.postmarks.co.za/images/Chipoka%201963.jpg>: “CHIPOKA. Postal Agency under Salima, opened 1955 to 1964”.



<http://www.postmarks.co.za/images/Kasupe%20C%201963.jpg>: “KASUPE. 01.01.1954 to 04.07.1964. Initially Upper Shire, the Liwonde”.

<http://www.postmarks.co.za/images/Katumbi%201963.jpg>: “KATUMBI. 27.02.1952 to 24.08.1963. Postal agency under Rumpi”.



<http://www.postmarks.co.za/images/Lirangwe.jpg>: "LIRANGWE. 22.01.1959 to 04.07.1964.
Postal agency under Blantyre".

<http://www.postmarks.co.za/images/Maonde%201963%202.jpg>: "MAONDE. 01.08.1963 to
04.07.1964. Postal agency under Dedza. Renamed from Kachere".



<http://www.postmarks.co.za/images/Mayani%201963.jpg>: "MAYANI. 14.10.1955 to
04.07.1964. Postal agency under Dedza".

<http://www.postmarks.co.za/images/Nchenachena%203.jpg>: "NCHEENCHENA. 27.11.1952
to 04.07.1964".



<http://www.postmarks.co.za/images/Njuli%201963.jpg>: "NJULI. 04.10.1932 to 31.12.1935.
07.07.1952 to 04.07.1964. Postal agency under Limbe".

<http://www.postmarks.co.za/images/Ruarwe%201963.jpg>: "RUARWE. 27.06.1955 to
04.07.1964. Postal agency under Ntaka Bay".



<http://www.postmarks.co.za/images/Chinteche%201961.jpg>: “CHINTECHE (CHINTNCHE) (CHINTECHI), West Nyasa District. Opened 1905 to 1964”.

<http://www.postmarks.co.za/images/Chisempere%2004.jpg>: “CHISEMPHERE (CHISEMPERE), Postal Agency under Kasungu, opened 1951 to 1964”.

<http://www.postmarks.co.za/images/Chisenga.jpg>: “CHISENGA, Opened 1961 to 1964”.



<http://www.postmarks.co.za/images/Eutini%2002.jpg>: “EUTINI, 01.01.1956 to 04.07.1964. Postal agency under Kafukule”.

<http://www.postmarks.co.za/images/Fort%20Manning%201960.jpg>: “FORT MANNING; 19.12.1898 to 01.01.1912; 13.07.1921 to 04.07.1964. Near Salima”.

<http://www.postmarks.co.za/images/Kaporo%201961.jpg>: “KAPORO. 1.06.1956 to ca. March 1964. Postal agency under Karonga”.



<http://www.postmarks.co.za/images/Karonga%2010.jpg>: “KARONGA. 17.10.1893 to about December 1914; 21.08.1916 to 04.07.1964. North Nyasa District”.

<http://www.postmarks.co.za/images/Likoma%20Island%201963.jpg>: “LIKOMA ISLAND. 1893 to 01.10.1899; 01.12.1934 to 04.07.1964”.

<http://www.postmarks.co.za/images/Lujeri%2004.jpg>: “LUJERI. 10.01.1928 to 04.07.1964. Sub post office under Limbe”.



<http://www.postmarks.co.za/images/Makwasa%201962.jpg>: “MAKWASA. 19.12.1950 to 04.07.1964. Near Malo Mulo”.

<http://www.postmarks.co.za/images/Namadzi%201963.jpg>: “NAMADZI, 16.05.1932 to 04.07.1964”.

<http://www.postmarks.co.za/images/Nambuma%201962.jpg>: “NAMBUMA. 21.04.1960 to 04.07.1964”.



<http://www.postmarks.co.za/images/Ngabau%201963.jpg>: “NGABU. 16.09.1957 to 04.07.1964”.

<http://www.postmarks.co.za/images/Nkata%20Bay%206.jpg>: “NKATA (BAY). 02.11.1899 to 1906; 11.06.1934 to 04.07.1964”.

<http://www.postmarks.co.za/images/Nkhunga%202.jpg>: “NKHUNGA. 05.09.1951 to 04.07.1964. Postal agency under Kota Kota”.



<http://www.postmarks.co.za/images/Ntaja%203.jpg>: “NTAJA. 15.10.1954 to 04.07.1964; Postal agency under Kasupe. Renamed from Mpiri”.

<http://www.postmarks.co.za/images/Phwambwa%203.jpg>: “PHWAMPWA. 31.05.1955 to 04.07.1964. Postal agency under Rumpi”.

<http://www.postmarks.co.za/images/Sandama%201961.jpg>: “SANDAMA. 26.07.1926 to 04.07.1964. Renamed from Nswadzi”.



<http://www.postmarks.co.za/images/Dowa%20%20cover.jpg>: "DOWA, 1900 to 04.07.1964".

<http://www.postmarks.co.za/images/Namitete%20%20cover.jpg>: "NAMITETE. 03.10.1950 to 04.07.1964".



<http://www.postmarks.co.za/images/Matale%201963%20cover.jpg>: "MATALE. 21.05.1957 to 09.10.1963. Postal agency under Ncheu".



<http://www.postmarks.co.za/images/Mwambo%201959.jpg>: "MWAMBO. 01.06.1957 to 04.07.1964. Postal agency under Zomba".

<http://www.postmarks.co.za/images/Mzimba%201960%20.jpg>: "MZIMBA. 1905 to 04.07.1964".



<http://www.postmarks.co.za/images/Palombe%206.jpg>: "PALOMBE. 01.07.1935 to 04.07.1964".

<http://www.postmarks.co.za/images/Tekerani%201963.jpg>: "TEKERANI, 01.08.1934 to 04.07.1964".



<http://www.postmarks.co.za/images/Usisya%201961%20cover.jpg>: "USISYA. 06.07.1955 to 04.07.1964. Postal agency under Nkata Bay".

1960 Kariba Dam



<http://www.postmarks.co.za/images/Mzuzu%20%20cover.jpg>: "MZUZU. 12.10.1949 to 04.07.1964".

1962 Coupon



<http://www.postmarks.co.za/images/Zomba%2019.jpg>

1963 Red Cross



<http://www.postmarks.co.za/images/Kasungu%201963.jpg>: “KASUNGU. June 1922 to 04.07.1964. Near Lilongwe”.

<http://www.postmarks.co.za/images/Linthipe%202.jpg>: “LINTHIPE. 16.02.1962 to 21.05.1964. Postal agency under Dedza”.

<http://www.postmarks.co.za/images/Livingstonia%201963.jpg>: “LIVINGSTONIA. 21.10.1912 to 04.07.1964 Renamed from Deep Bay”.

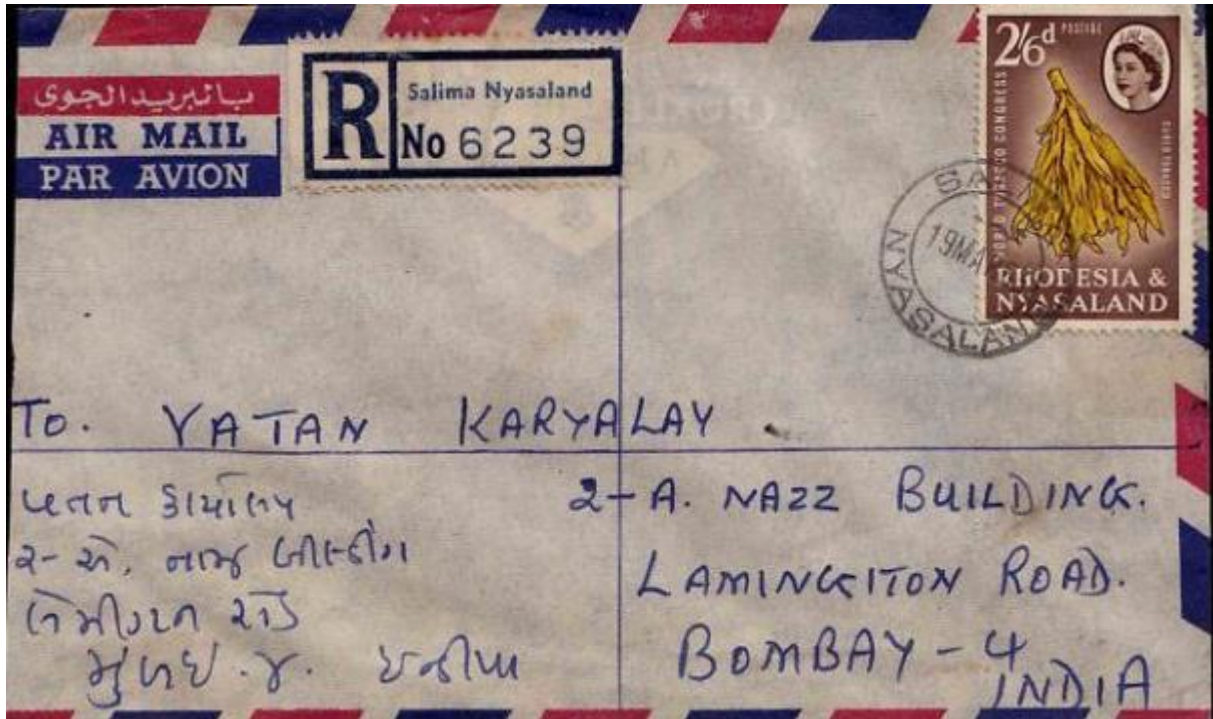


<http://www.postmarks.co.za/images/Lumbadzi.jpg>: “LUMBADZI. 27.12.1961 to 04.07.1964. Postal agency under Dowa”.

1963 Tobacco Congress



<http://www.postmarks.co.za/images/Ncheu%206.jpg>: “NCHEU. 31.08.1908 to 04.07.1964”.



<http://www.postmarks.co.za/images/Salima%20cover.jpg>: "SALIMA. 23.08.1934 to 04.07.1964".

Postmarks without stamps 1953-1963

1954



<http://www.postmarks.co.za/images/Kota%20Kota%201954.jpg>: "KOTA KOTA. 1894 to 04.07.1964".

1961



<http://www.postmarks.co.za/images/Cholo%201961.jpg>: "CHOLO, Post Office, opened 1896 to 1910 and 1921 to 1964".

1962



<http://www.postmarks.co.za/images/Ekwendeni%203.jpg> : "EKWENDENI. 23.06.1933 to 04.07.1964. Mombra district".

1963



<http://www.postmarks.co.za/images/Bolero.jpg>: "BOLERO Postal Agency under Rumpi. opened 1959 to 1963".

<http://www.postmarks.co.za/images/Khombedza%201963.jpg>: "KHOMBEDZA. 26.06.1959 to 21.11.1963. Postal agency under Salima".

<http://www.postmarks.co.za/images/Limbe%20Returned%20letter%20Office.jpg>: "LIMBE RETURNED LETTER OFFICE. 11.09.1963 to 04.07.1964".



<http://www.postmarks.co.za/images/Mkaya%201963.jpg>: “MKAYA. 24.08.1960 to 04.07.1964”.

<http://www.postmarks.co.za/images/Nthalire%201963.jpg>: “NTHALIRE. 01.10.1957 to 04.07.1964. Postal agency under Fort Hill”.

Other postal agencies, but without illustration yet

(information from www.poststamps.co.za):

BAWI, Postal Agency under Ncheu, opened 1955 to 1964

BENGA, Postal Agency under Kota Kota, opened 1956 to 1964

BILILA, Postal Agency under Ncheu, opened 1960 to 1963

CHINGALE, Postal Agency under Zomba, opened 1955 to March 1964.

FORT ALSTON, 01.05.1903 to 08.09.1904.

KACHERE; 24.02.1959 to 22.05.1962; Postal agency under Dedza; Renamed Maonde by 1963.

KAMWAYA, 01.05.1955 to 30.11.1956; 11.06.1957 to 04.07.1964. Postal agency under Chimteche.

KANDEU, 20.04.1953 to 04.07.1964, Postal agency under Ncheu.

KASIYA, 01.08.1958 to 01.01.1963. Postal agency under Lilongwe.

KILUPULA, 07.08.1952 to 16.05.1956. Postal agency under Karonga.

MISUKU, 02.11.1955 to Unknown.

MLOWE. 14.01.1954 to 04.07.1964. Postal agency under Livingstonia.

MPIRI, 30.06.1952 to 13.09.1954. Renamed to Ntaja.

NYUNGWE, 15.07.1955 to March 1964. Postal agency under Karonga.

SHARPE VALE, 07.02.1952 to 16.11.1956. Postal agency under Ntakataka.

SINYALA. 02.08.1961 to 11.04.1962.

Nyasaland Postage Stamps in 1963

1963 (1/11), Nyasaland regular postage stamps, 11 , postage stamps (Mi 114-124).



https://www.freestampcatalogue.nl/media/catalog/product/cache/1/small_image/400x400/040ec09b1e35df139433887a97daa66f/n/r/nrp0114.jpg



<http://www.postmarks.co.za/images/Chiromo%201963.jpg>: "CHIROMO. Renamed from Tshiromo. HQ of Ruo district. opened 1898 to 1964".



[http://www.rhodesianstamps.net/Nyasaland_stamps/05_Fiscals_Revenues_Postmarks/Postmarks/NYD_325\(1\)_1963_QEII_Pmks.jpg](http://www.rhodesianstamps.net/Nyasaland_stamps/05_Fiscals_Revenues_Postmarks/Postmarks/NYD_325(1)_1963_QEII_Pmks.jpg), Cancelled BLANTYRE

[http://www.rhodesianstamps.net/Nyasaland_stamps/05_Fiscals_Revenues_Postmarks/Postmarks/NYD_325\(5\)_1963_QEII_Pmks.jpg](http://www.rhodesianstamps.net/Nyasaland_stamps/05_Fiscals_Revenues_Postmarks/Postmarks/NYD_325(5)_1963_QEII_Pmks.jpg) Cancelled SANDAMA

[http://www.rhodesianstamps.net/Nyasaland_stamps/05_Fiscals_Revenues_Postmarks/Postmarks/NYD_325\(3\)_1963_QEII_Pmks.jpg](http://www.rhodesianstamps.net/Nyasaland_stamps/05_Fiscals_Revenues_Postmarks/Postmarks/NYD_325(3)_1963_QEII_Pmks.jpg) Cancelled NTAKATAKA

[http://www.rhodesianstamps.net/Nyasaland_stamps/05_Fiscals_Revenues_Postmarks/Postmarks/NYD_325\(4\)_1963_QEII_Pmks.jpg](http://www.rhodesianstamps.net/Nyasaland_stamps/05_Fiscals_Revenues_Postmarks/Postmarks/NYD_325(4)_1963_QEII_Pmks.jpg) Cancelled PHWAMPWA

[http://www.rhodesianstamps.net/Nyasaland_stamps/05_Fiscals_Revenues_Postmarks/Postmarks/NYD_325\(2\)_1963_QEII_Pmks.jpg](http://www.rhodesianstamps.net/Nyasaland_stamps/05_Fiscals_Revenues_Postmarks/Postmarks/NYD_325(2)_1963_QEII_Pmks.jpg). Cancelled DOWA

For all: "SG 191. 3d Value on piece cancelled BLANTYRE type 27j.4, DOWA 27, NTAKATAKA 15m, PHWAMPWA 25 & SANDAMA type 15 Scarce commercial use".



<http://www.postmarks.co.za/images/Champira%201.jpg>: "CHAMPIRA Renamed from Katete River; opened 1957 to 1964".

<http://www.postmarks.co.za/images/Magomero%201963.jpg>: "MAGOMERO. 09.11.1953 to 04.07.1964; Post Office".



<http://www.postmarks.co.za/images/Mkhoma%20Nyasaland%206%20cover.jpg>:

"MKHOMA. December 1922 to 04.07.1964".

<http://www.postmarks.co.za/images/Salima%20Nyasaland%20%204%20cover.jpg>: "SALIMA. 23.08.1934 to 04.07.1964".



<http://www.postmarks.co.za/images/Mlanje%209%20cover.jpg>: "MLANJE (MILANJI). 16.08.1893 to 01.08.1896; 09.06.1910 to 04.07.1964. Renamed Fort Anderson between 1906 and 1910".

<http://www.postmarks.co.za/images/Visanza%203%20cover.jpg>: "VISANZA. 12.10.1953 to 04.07.1964. Postal agency under Lilongwe".



[http://www.rhodesianstamps.net/Nyasaland_stamps/05_Fiscals_Revenues_Postmarks/Postmarks/NYD_327\(1\)_1963_QEII_Pmks.jpg](http://www.rhodesianstamps.net/Nyasaland_stamps/05_Fiscals_Revenues_Postmarks/Postmarks/NYD_327(1)_1963_QEII_Pmks.jpg) . Cancelled CHIKWAWA

[http://www.rhodesianstamps.net/Nyasaland_stamps/05_Fiscals_Revenues_Postmarks/Postmarks/NYD_327\(2\)_1963_QEII_Pmks.jpg](http://www.rhodesianstamps.net/Nyasaland_stamps/05_Fiscals_Revenues_Postmarks/Postmarks/NYD_327(2)_1963_QEII_Pmks.jpg) Cancelled DOWA

[http://www.rhodesianstamps.net/Nyasaland_stamps/05_Fiscals_Revenues_Postmarks/Postmarks/NYD_327\(5\)_1963_QEII_Pmks.jpg](http://www.rhodesianstamps.net/Nyasaland_stamps/05_Fiscals_Revenues_Postmarks/Postmarks/NYD_327(5)_1963_QEII_Pmks.jpg) Cancelled KASUNGU

[http://www.rhodesianstamps.net/Nyasaland_stamps/05_Fiscals_Revenues_Postmarks/Postmarks/NYD_327\(3\)_1963_QEII_Pmks.jpg](http://www.rhodesianstamps.net/Nyasaland_stamps/05_Fiscals_Revenues_Postmarks/Postmarks/NYD_327(3)_1963_QEII_Pmks.jpg) Cancelled FORT HILL

[http://www.rhodesianstamps.net/Nyasaland_stamps/05_Fiscals_Revenues_Postmarks/Postmarks/NYD_327\(4\)_1963_QEII_Pmks.jpg](http://www.rhodesianstamps.net/Nyasaland_stamps/05_Fiscals_Revenues_Postmarks/Postmarks/NYD_327(4)_1963_QEII_Pmks.jpg) Cancelled KARONGA

For all: “SG 193. 9d Value on piece used at CHIKWAWA type 25, DOWA 27, FORT HILL 23, KARONGA 27.2, KASUNGU 27 & NAMWERA type 15m, Scarce commercial use”.





[http://www.rhodesianstamps.net/Nyasaland_stamps/05_Fiscals_Revenues_Postmarks/Postmarks/NYD_328\(1\)_1963_QEII_Pmks.jpg](http://www.rhodesianstamps.net/Nyasaland_stamps/05_Fiscals_Revenues_Postmarks/Postmarks/NYD_328(1)_1963_QEII_Pmks.jpg)

[http://www.rhodesianstamps.net/Nyasaland_stamps/05_Fiscals_Revenues_Postmarks/Postmarks/NYD_328\(2\)_1963_QEII_Pmks.jpg](http://www.rhodesianstamps.net/Nyasaland_stamps/05_Fiscals_Revenues_Postmarks/Postmarks/NYD_328(2)_1963_QEII_Pmks.jpg)

[http://www.rhodesianstamps.net/Nyasaland_stamps/05_Fiscals_Revenues_Postmarks/Postmarks/NYD_328\(3\)_1963_QEII_Pmks.jpg](http://www.rhodesianstamps.net/Nyasaland_stamps/05_Fiscals_Revenues_Postmarks/Postmarks/NYD_328(3)_1963_QEII_Pmks.jpg)

[http://www.rhodesianstamps.net/Nyasaland_stamps/05_Fiscals_Revenues_Postmarks/Postmarks/NYD_328\(6\)_1963_QEII_Pmks.jpg](http://www.rhodesianstamps.net/Nyasaland_stamps/05_Fiscals_Revenues_Postmarks/Postmarks/NYD_328(6)_1963_QEII_Pmks.jpg)

[http://www.rhodesianstamps.net/Nyasaland_stamps/05_Fiscals_Revenues_Postmarks/Postmarks/NYD_328\(5\)_1963_QEII_Pmks.jpg](http://www.rhodesianstamps.net/Nyasaland_stamps/05_Fiscals_Revenues_Postmarks/Postmarks/NYD_328(5)_1963_QEII_Pmks.jpg)

[http://www.rhodesianstamps.net/Nyasaland_stamps/05_Fiscals_Revenues_Postmarks/Postmarks/NYD_328\(4\)_1963_QEII_Pmks.jpg](http://www.rhodesianstamps.net/Nyasaland_stamps/05_Fiscals_Revenues_Postmarks/Postmarks/NYD_328(4)_1963_QEII_Pmks.jpg)

For all: "SG 191 to 194 A combination of values used for various commercial rates including Registration - Used at CHOLO type 15pn, DOWA 27, LIMBE 27j.1, LILONGWE 22p, MAONDE 25 & NAMWERA type 15m - Nice assembly".



<http://www.postmarks.co.za/images/Mzuzu%206%20cover.jpg>: "MZUZU. 12.10.1949 to 04.07.1964".



<http://www.postmarks.co.za/images/Ntondwe%204%20cover.jpg>: "NTONDWE. 01.05.1911 to 13.03.1920; 09.11.1932 to 04.07.1964".

1964 (1/1), Autonomy, stamps without EII, 12, postage stamps (Mi 125-136).



https://www.freestampcatalogue.nl/media/catalog/product/cache/1/small_image/400x400/040ec09b1e35df139433887a97daa66f/n/r/nrp0125.jpg