



Universiteit
Leiden
The Netherlands

Neural mechanisms of social-emotional dysfunction in autism spectrum disorder and conduct disorder

Klapwijk, E.T.

Citation

Klapwijk, E. T. (2018, January 23). *Neural mechanisms of social-emotional dysfunction in autism spectrum disorder and conduct disorder*. Retrieved from <https://hdl.handle.net/1887/61137>

Version: Not Applicable (or Unknown)

License: [Licence agreement concerning inclusion of doctoral thesis in the Institutional Repository of the University of Leiden](#)

Downloaded from: <https://hdl.handle.net/1887/61137>

Note: To cite this publication please use the final published version (if applicable).

Cover Page



Universiteit Leiden



The following handle holds various files of this Leiden University dissertation:

<http://hdl.handle.net/1887/61137>

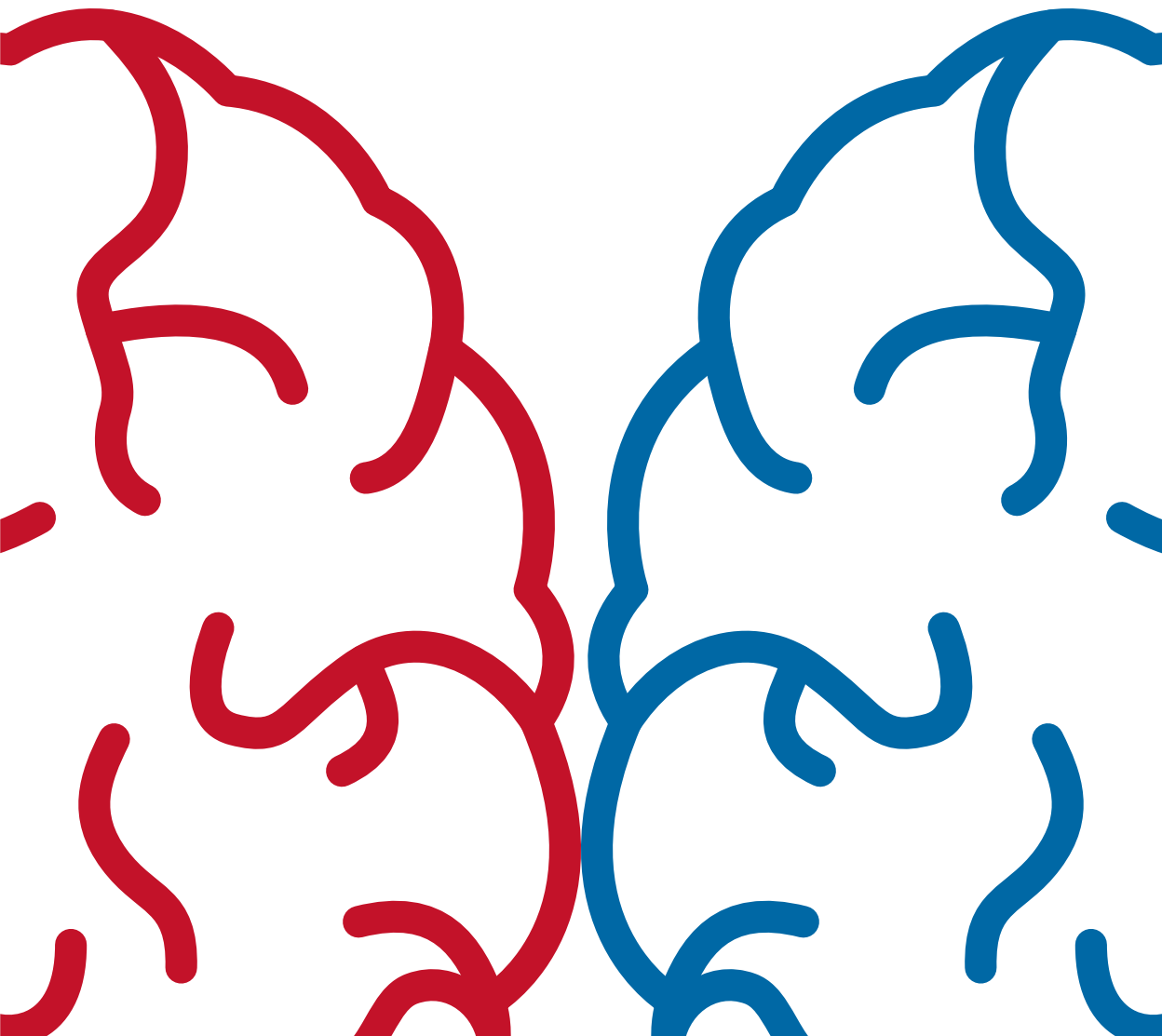
Author: Klapwijk, E.T.

Title: Neural mechanisms of social-emotional dysfunction in autism spectrum disorder and conduct disorder

Issue Date: 2018-01-23

Neural mechanisms of social-emotional dysfunction in autism spectrum disorder and conduct disorder

Eduard Klapwijk



Neural mechanisms of social-emotional
dysfunction in autism spectrum disorder
and conduct disorder

© Eduard Klapwijk, 2017

Cover design: Eduard Klapwijk

Layout and print: Haveka de grafische partner, Alblaserdam

The studies described in this thesis were supported by the Netherlands Organization for Scientific Research (NWO) Grant No. 056-23-011.

**Neural mechanisms of social-emotional
dysfunction in autism spectrum disorder
and conduct disorder**

Proefschrift

ter verkrijging van

de graad van Doctor aan de Universiteit Leiden,

op gezag van Rector Magnificus prof.dr. C.J.J.M. Stolker, volgens besluit

van het College voor Promoties

te verdedigen op dinsdag 23 januari 2018

klokke 16.15 uur

door

Eduard Theodorus Klapwijk

geboren te Apeldoorn

in 1986

Promotores

Prof. dr. R.R.J.M. Vermeiren

Prof. dr.A. Popma

Co-promotor

Dr. O.F. Colins

Promotiecommissie

Prof. dr. E.A. Crone

Prof. dr.A.M. van Hemert

Prof. dr. P.J. Hoekstra (Rijksuniversiteit Groningen)

Dr. C.H. de Kogel (Wetenschappelijk Onderzoek- en Documentatiecentrum,
ministerie van Veiligheid en Justitie)

Table of contents

1. General introduction	1
2. Brain responses during empathy in autism and conduct disorder <i>Journal of Child Psychology and Psychiatry (2016), 57(6), 737-747.</i>	17
3. Altered white matter architecture in autism versus conduct disorder <i>Submitted for Publication</i>	41
4. Fairness responses to emotions in conduct disorder <i>Social Cognitive and Affective Neuroscience (2016), 11(4), 674-682.</i>	59
5. Fairness responses to emotions in autism spectrum disorder <i>Journal of Autism and Developmental Disorders (2017), 47(8), 2390-2400.</i>	79
6. Summary and general discussion	101
7. References	117
8. Nederlandse samenvatting	141
Curriculum vitae	
Dankwoord	
List of publications	

