



Universiteit  
Leiden  
The Netherlands

## **Assessing future reactive nitrogen inputs into global croplands based on the shared socioeconomic pathways**

Mogollon, J.M.; Lassaletta, L.; Beusen, A.H.W.; Grinseven, H.J.M.; Westhoek, H.; Bouwman, A.F.

### **Citation**

Mogollon, J. M., Lassaletta, L., Beusen, A. H. W., Grinseven, H. J. M., Westhoek, H., & Bouwman, A. F. (2018). Assessing future reactive nitrogen inputs into global croplands based on the shared socioeconomic pathways. *Environmental Research Letters*, 13(4), 044008. doi:10.1088/1748-9326/aab212

Version: Not Applicable (or Unknown)

License: [Leiden University Non-exclusive license](#)

Downloaded from: <https://hdl.handle.net/1887/62194>

**Note:** To cite this publication please use the final published version (if applicable).

LETTER • OPEN ACCESS

## Assessing future reactive nitrogen inputs into global croplands based on the shared socioeconomic pathways

To cite this article: J M Mogollón *et al* 2018 *Environ. Res. Lett.* **13** 044008

View the [article online](#) for updates and enhancements.

### Related content

- [Piling up reactive nitrogen and declining nitrogen use efficiency in Pakistan: a challenge not challenged \(1961–2013\)](#)  
Sajjad Raza, Jianbin Zhou, Tariq Aziz et al.
- [Nitrogen use in the global food system: past trends and future trajectories of agronomic performance, pollution, trade, and dietary demand](#)  
Luis Lassaletta, Gilles Billen, Josette Garnier et al.
- [50 year trends in nitrogen use efficiency of world cropping systems: the relationship between yield and nitrogen input to cropland](#)  
Luis Lassaletta, Gilles Billen, Bruna Grizzetti et al.

# Environmental Research Letters



## LETTER

# Assessing future reactive nitrogen inputs into global croplands based on the shared socioeconomic pathways

### OPEN ACCESS

#### RECEIVED

23 November 2017

#### REVISED

14 February 2018

#### ACCEPTED FOR PUBLICATION

26 February 2018

#### PUBLISHED

23 March 2018

Original content from this work may be used under the terms of the [Creative Commons Attribution 3.0 licence](#).

Any further distribution of this work must maintain attribution to the author(s) and the title of the work, journal citation and DOI.



J M Mogollón<sup>1,4,5</sup> , L Lassaletta<sup>1,2,3</sup>, A H W Beusen<sup>1,2</sup>, H J M van Grinsven<sup>2</sup>, H Westhoek<sup>2</sup> and A F Bouwman<sup>1,2</sup> 

<sup>1</sup> Department of Earth Sciences—Geochemistry, Faculty of Geosciences, Utrecht University, PO Box 80021, 3508 TA Utrecht, The Netherlands

<sup>2</sup> PBL Netherlands Environmental Assessment Agency, PO Box 30314, 2500 GH The Hague, The Netherlands

<sup>3</sup> CEIGRAM/Department of Agricultural Production, Universidad Politécnica de Madrid, Madrid 28040, Spain

<sup>4</sup> Currently at: Institute of Environmental Sciences (CML), Leiden University, PO Box 9518, 2300 RA Leiden, The Netherlands

<sup>5</sup> Author to whom any correspondence should be addressed.

E-mail: [j.m.mogollon@cml.leidenuniv.nl](mailto:j.m.mogollon@cml.leidenuniv.nl)

**Keywords:** nitrogen, shared socioeconomic pathways, fertilizer

Supplementary material for this article is available [online](#)

## Abstract

Reactive nitrogen (N) inputs in agriculture strongly outpace the outputs at the global scale due to inefficiencies in cropland N use. While improvement in agricultural practices and environmental legislation in developed regions such as Western Europe have led to a remarkable increase in the N use efficiency since 1985, this lower requirement for reactive N inputs via synthetic fertilizers has yet to occur in many developing and transition regions. Here, we explore future N input requirements and N use efficiency in agriculture for the five shared socioeconomic pathways. Results show that under the most optimistic sustainability scenario, the global synthetic fertilizer use in croplands stabilizes and even shrinks (85 Tg N yr<sup>-1</sup> in 2050) regardless of the increase in crop production required to feed the larger estimated population. This scenario is highly dependent on projected increases in N use efficiency, particularly in South and East Asia. In our most pessimistic scenario, synthetic fertilization application rates are expected to increase almost threefold by 2050 (260 Tg N yr<sup>-1</sup>). Excepting the sustainability scenario, all other projected scenarios reveal that the areal N surpluses will exceed acceptable limits in most of the developing regions.

## 1. Introduction

Nitrogen (N) is a key nutrient for living organisms and has been exceedingly used in food production since the discovery of the Haber-Bosch process for fixing N<sub>2</sub> in the early part of the 20th century (Fowler *et al* 2013, Galloway *et al* 1995, Smil 2001). Since then, the application of synthetic fertilizers has boosted the global agricultural production and allowed for the exponential increase in the global population (Galloway *et al* 2004).

Since at the global scale the crop N yield is less than 50% of the total N inputs (Lassaletta *et al* 2014) there are major N losses to the environment. N is lost from the soil-plant system by denitrification in the form of dinitrogen (N<sub>2</sub>), nitrous oxide (N<sub>2</sub>O) and nitric oxide (NO), ammonia (NH<sub>3</sub>) volatilization, nitrate (NO<sub>3</sub><sup>-</sup>)

leaching, and via water runoff and soil erosion (Bouwman *et al* 2013). NO, N<sub>2</sub>O, and NH<sub>3</sub> are gases that not only affect air quality, ozone chemistry and heat retention in the atmosphere, but also negatively affect human health (Sutton *et al* 2013). NO<sub>3</sub><sup>-</sup> in drinking water has potential health impacts and has thus been subjected to regulations in several countries, (e.g. the USA and the European Union; Bryan and van Grinsven 2013, van Grinsven *et al* 2015a).

Increased N losses to the environment adversely affect freshwater systems, the coastal ocean, and terrestrial ecosystems (Bouwman *et al* 2005, Seitzinger *et al* 2010). Nutrients, such as N, stimulate primary production in the hydrosphere, which can ultimately lead to the proliferation of (harmful) algal blooms and the development of hypoxic dead zones, which are detrimental for aerobic organisms (Howarth and

Marino 2006, Rabalais 2002, Rabalais *et al* 2010, Turner *et al* 2003).

Future global food demand will depend on many factors, including population change, technology advancement, trade and global cooperation, and dietary changes as a consequence of economic growth (e.g. Billen *et al* 2015, Lassaletta *et al* 2016, van Grisnven *et al* 2015b, Westhoek *et al* 2014). These elements have been integrated into the shared socioeconomic pathways (SSPs; Ebi *et al* 2014, Kriegler *et al* 2014, O'Neill *et al* 2014), which are global storylines that follow internally consistent assumptions on a range of socioeconomic factors, varying according to mitigation and adaptation challenges with a focus on climate change. These SSP scenarios have been implemented with the Integrated Model to Assess the Global Environment (IMAGE) version 3.0 from 2006 until 2050, resulting in energy, food production and trade, greenhouse gas emissions, climate change, and land use and cover projections based on prescribed population and economic growth for 26 global regions (van Vuuren *et al* 2017).

In this paper, we quantify and scrutinize the future N inputs into croplands required that satisfy the demanded agricultural N production on a global scale. N agricultural production was derived from IMAGE 3.0 assuming the contrasting social, agronomical, and technological evolutions of each SSP. We furthermore calculate the scenario-specific future need for synthetic fertilizers according to the regional agricultural N dynamics. Ultimately this analysis can pinpoint where specific regions may pose environmental issues related to N inputs into croplands and the feasibility for these regions to improve their N use efficiencies by improving N management in croplands.

## 2. Methods

### 2.1. General

We calculate future (2006–2050) global N inputs into croplands by assessing the crop requirements according to each SSP scenario and for each of the IMAGE world regions (table S2). The model uses cropland and grassland areas as simulated with the IMAGE model (Stehfest *et al* 2014) for the five SSPs (van Vuuren *et al* 2017). Synthetic N fertilizer ( $S$ , kg N ha<sup>-1</sup> yr<sup>-1</sup>) inputs into croplands are estimated as the difference between total N inputs into croplands ( $I$ , kg N ha<sup>-1</sup> yr<sup>-1</sup>), and the sum of manure ( $M$ , kg N ha<sup>-1</sup> yr<sup>-1</sup>), atmospheric deposition ( $D$ , kg N ha<sup>-1</sup> yr<sup>-1</sup>), biological N<sub>2</sub> fixation ( $F$ , kg N ha<sup>-1</sup> yr<sup>-1</sup>) applied into or reaching croplands:

$$S = I - (M + D + F) \quad (1)$$

N inputs from manure, atmospheric deposition and biological N<sub>2</sub> fixation are taken from the IMAGE Global Nutrient Model (IMAGE-GNM, Beusen *et al* 2015, 2016, see SI4). N inputs in intensive grasslands

are calculated as the N withdrawn from animal products (N in production of meat, milk, and carcass withdrawal, plus N excretion in grasslands) for intensive livestock production (SI6).

Crop N yields ( $Y$ ) represent the N in harvested products. We use historical and future aggregated crop N yields obtained from the production for all food, feed, fiber, biofuel and industrial crops and stimulants as well as the N content in the harvested product of each crop, as provided by IMAGE 3.0 for the five SSPs (van Vuuren *et al* 2017, see SI1).  $Y$  can be related to the N inputs in a variety of ways. For instance, the N use efficiency ( $NUE$ ) is a measure that relates the total N inputs ( $I$ ) to the crop N yields, that is  $NUE = Y/I$ . Similarly, Lassaletta *et al* (2016), (2014) related  $Y$  (expressed in kg N ha<sup>-1</sup> yr<sup>-1</sup>) to  $I$  using a hyperbolic relationship as follows:

$$Y = \frac{Y_{\max} I}{Y_{\max} + I} \quad (2)$$

where  $Y_{\max}$  (kg N ha<sup>-1</sup> yr<sup>-1</sup>) represents the asymptote for the curve, or the hypothetical maximum yield (see SI2). Note that  $Y_{\max}$  differs from the potential yield as defined by the agronomic yield gap approach (e.g. van Ittersum *et al* 2016). It rather represents a hypothetical value that fits the yield-input relation according to equation 2. This simple yet robust relation based on  $Y_{\max}$  has been successfully used to describe input-yield curves at the country scale and for large global regions (Lassaletta *et al* 2014, Lassaletta *et al* 2016, Mueller *et al* 2017), whereby changes in agricultural management (e.g. fertilization technique, irrigation, rotations, crop varieties) are directly reflected in variation of the  $Y_{\max}$  value (Lassaletta *et al* 2014, Lassaletta *et al* 2016, Zhang *et al* 2017, Mueller *et al* 2017). With an unchanged  $Y_{\max}$ , N yield can only increase by adding N inputs. Improved N management or improved crop varieties lead to a larger  $Y_{\max}$  value, such that with the same input level, N yield will be higher; or the same N yield can be obtained with less N inputs (see supplementary figure 1 available at [stacks.iop.org/ERL/13/044008/mmedia](https://stacks.iop.org/ERL/13/044008/mmedia)). The merger of equations 1 and 2, provides the solution for the synthetic N fertilizer required for each region and SSP:

$$S = \frac{Y_{\max} Y}{Y_{\max} - Y} - (M + D + F) \quad (3)$$

$Y$ - $I$  curves with their respective  $Y_{\max}$  have been established for the 26 IMAGE regions at the base year (2005) as a base to develop assumptions for scenario construction.

Production increase can be achieved not just by increasing the crop N yield, but also by expanding the cropland area. The methodology for differentiating the contribution toward future cropland N production (increasing area vs. increasing yield) is given in SI5.

### 2.2. The SSPs scenarios

The SSPs include a sustainability scenario (SSP1, sustainability) in which the world makes good progress

Table 1. SSP descriptions (modified after Mogollón *et al* in preparation)

Property	2050 level				
	SSP1	SSP2	SSP3	SSP4	SSP5
Keyword	Sustainability	Middle of the road	Fragmentation	Inequality	Conventional development
Technological development	Rapid	Medium	Slow	Slow	Rapid
Progress towards development goals	Good	Some	Failure to achieve goals	Highly unequal	Market-driven
Resource intensity	Low	Medium	Very low	Highly unequal	Conventional development
Population ( $10^6$ inhabitants)	8531	9243	10038	9213	8629
GDP/capita (2005 US\$, market exchange rate)	24563	17877	12024	17500	32449
Global greenhouse gas emissions (GtC-eq yr <sup>-1</sup> )	15.6	19.8	21.5	18.0	27.9
Global mean temperature increase relative to 1860 (°C)	2.1	2.3	2.3	2.2	2.5
Crop production (Mton d.m. <sup>a</sup> )	4749	5111	5069	4855	5215
Area arable and permanent crops (Mha)	1522	1735	1846	1732	1720
N Production (Tg N yr <sup>-1</sup> )	120	132	137	126	140
$Y_{\max}$ calculation ( $F_{Y_{\max}}$ , equation S2)	$\frac{Y}{(1-NUE)}$	equation S1	Same as previous year	wealth dependent	equation S1

<sup>a</sup> d.m. = Dry matter.

toward reducing our environmental impact, with ongoing efforts to achieve development goals while lessening resource intensity and fossil fuel dependency. SSP2 (business as usual) typifies the middle of the road pathway, where current trends propagate toward the future. SSP3 (fragmentation) consists of a fragmented world with weak institutions and low regional development. SSP4 (regional inequality) represents a scenario with a highly unequal world in which a relatively small, rich global elite develops a fast pace, while a larger, poor group is vulnerable to the impact of climate change. SSP5 (economic development) concerns a global development that focuses on economic growth with continued high greenhouse gas emissions.

### 2.3. Calculating N input and surplus in croplands

N in manure ( $M$ ), N deposition ( $D$ ), and biological N fixation ( $F$ ) by crops were taken from the IMAGE-GNM model (Beusen *et al* 2016). For further details see SI4.

Synthetic N fertilizer use is calculated with equation (3) based on the total N inputs ( $I$ ).  $I$  for SSP1 (and the wealthy regions in SSP4) is calculated based on modifying the target  $NUE$ s of Zhang *et al* (2015) to our global regions to calculate  $Y_{\max}$ . These  $NUE$ s assume, among other things, global improvements in water and nutrient management, in the timing of fertilizer application, the cultivation of crops best adapted to the local environment, global access to advanced agronomic technologies, and the implementation of policies to regulate N runoff (Zhang *et al* 2015). For SSP3 (and the SSP4 poor regions) we assume a constant  $Y_{\max}$  (from 2005) provided a lowermost  $NUE$  of 20% is met. For SSP2, SSP5, and the middle-income regions in SSP4, equation (3) still contains two unknowns ( $S$  and  $Y_{\max}$ ). Equation (3) was thus solved for each region establishing a relation between  $Y_{\max}$  and the gross domestic product—per capita (GDP-pc). The future  $Y_{\max}$  for this correlation was calculated using

the crop N yield, biological fixation, deposition, and manure of SSP2, together with the synthetic N fertilizer projections from FAO-2050 (Alexandratos and Bruinsma 2012). For further details see SI3. An additional assumption among scenarios is that world regions with  $Y < 30$  kg N ha<sup>-1</sup> yr<sup>-1</sup> were inferred to adhere to a constant  $Y_{\max}$ , provided it meets a minimum  $NUE$  constraint of 20% (see table 1). Furthermore a maximum  $NUE$  constraint of 85% is applicable to all scenarios (e.g. Giller *et al* 2004).

N surplus corresponds to the difference between N inputs and outputs. We compare the N surplus for each region and each SSP in 2050 with the maximum allowable threshold of 80 kg N ha<sup>-1</sup> yr<sup>-1</sup> according to EUNEP (EUNEP 2015). A summary of the various datasets used in this study is available in table 1.

## 3. Results

### 3.1. GDP-pc— $Y_{\max}$ relation

Figure 1 shows the  $Y_{\max}$  based on the FAO-2050 estimates for future total N inputs following business as usual projections as a function of the GDP-pc for SSP2. The positive correlation between GDP-pc and  $Y_{\max}$  can be explained by improvements in agricultural technology with increasing wealth. Most countries, however, show an attenuated increase of  $Y_{\max}$  with increasing GDP-pc, which adheres to the law of diminishing returns. A notable exception is Japan, which has a decreasing GDP-pc— $Y_{\max}$  relation.

### 3.2. Global N budget under the 5 SSPs scenarios

Figure 2(a) shows that all SSPs follow a modest increase in the crop N production until 2050. This increase, however, is highest for SSP5, which grows by 61 Tg N yr<sup>-1</sup>, in comparison to most attenuated N production increase (SSP1 by 41 Tg N yr<sup>-1</sup>). Figure 2(b) shows the N surpluses (positive budgets,

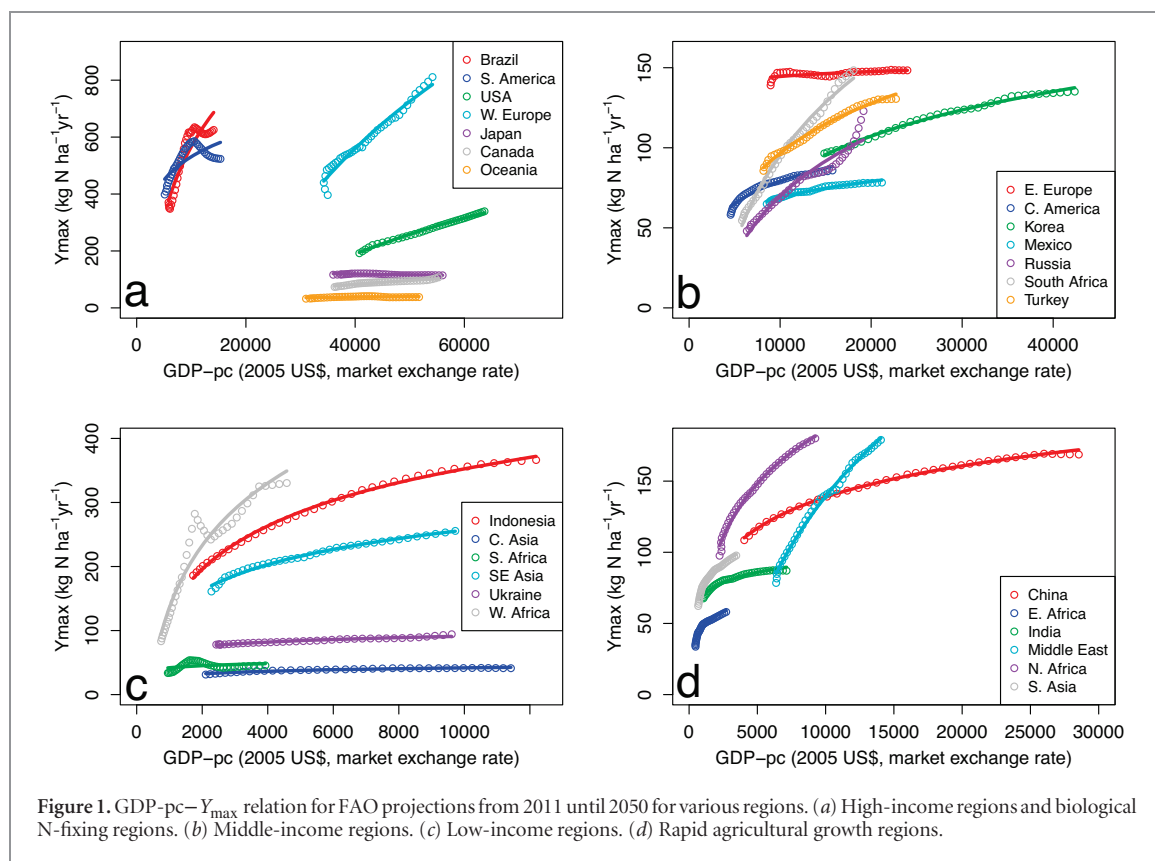


Figure 1. GDP-pc–Y<sub>max</sub> relation for FAO projections from 2011 until 2050 for various regions. (a) High-income regions and biological N-fixing regions. (b) Middle-income regions. (c) Low-income regions. (d) Rapid agricultural growth regions.

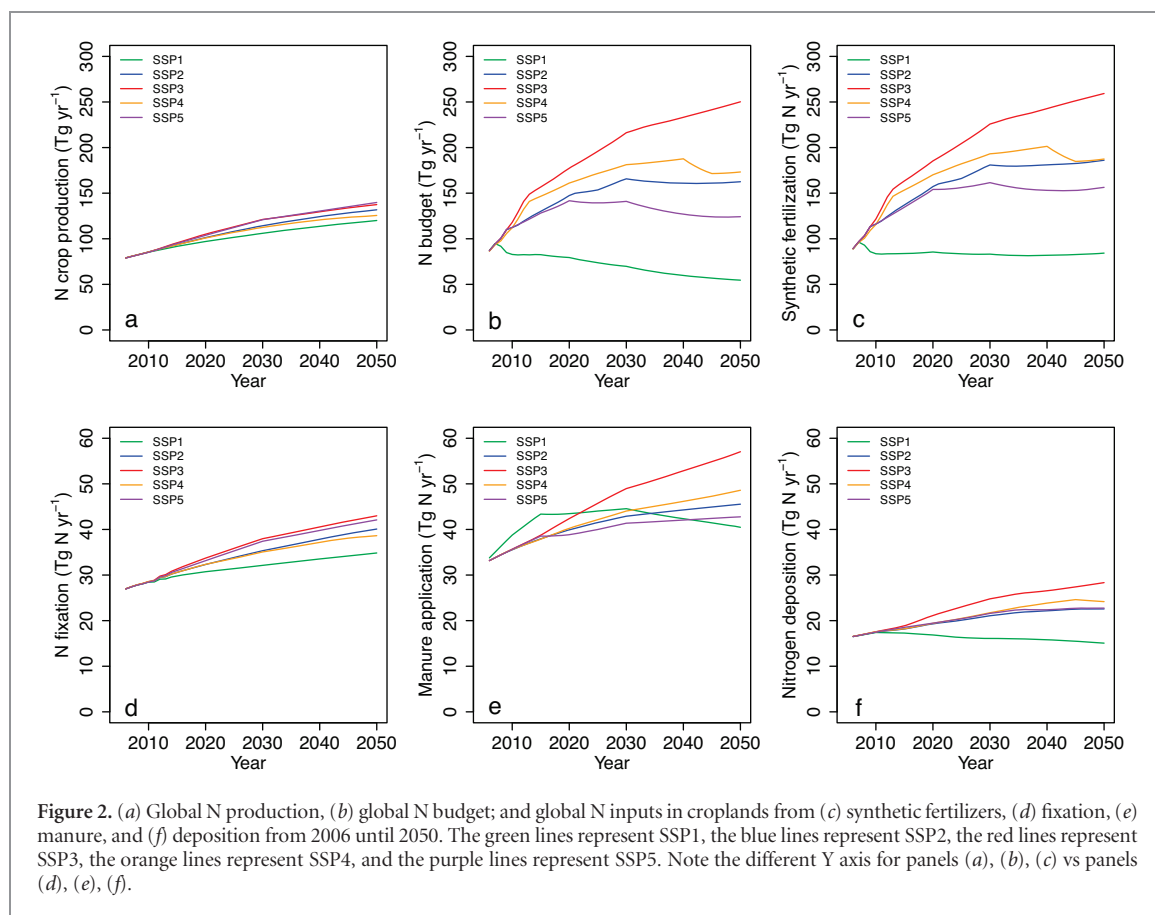
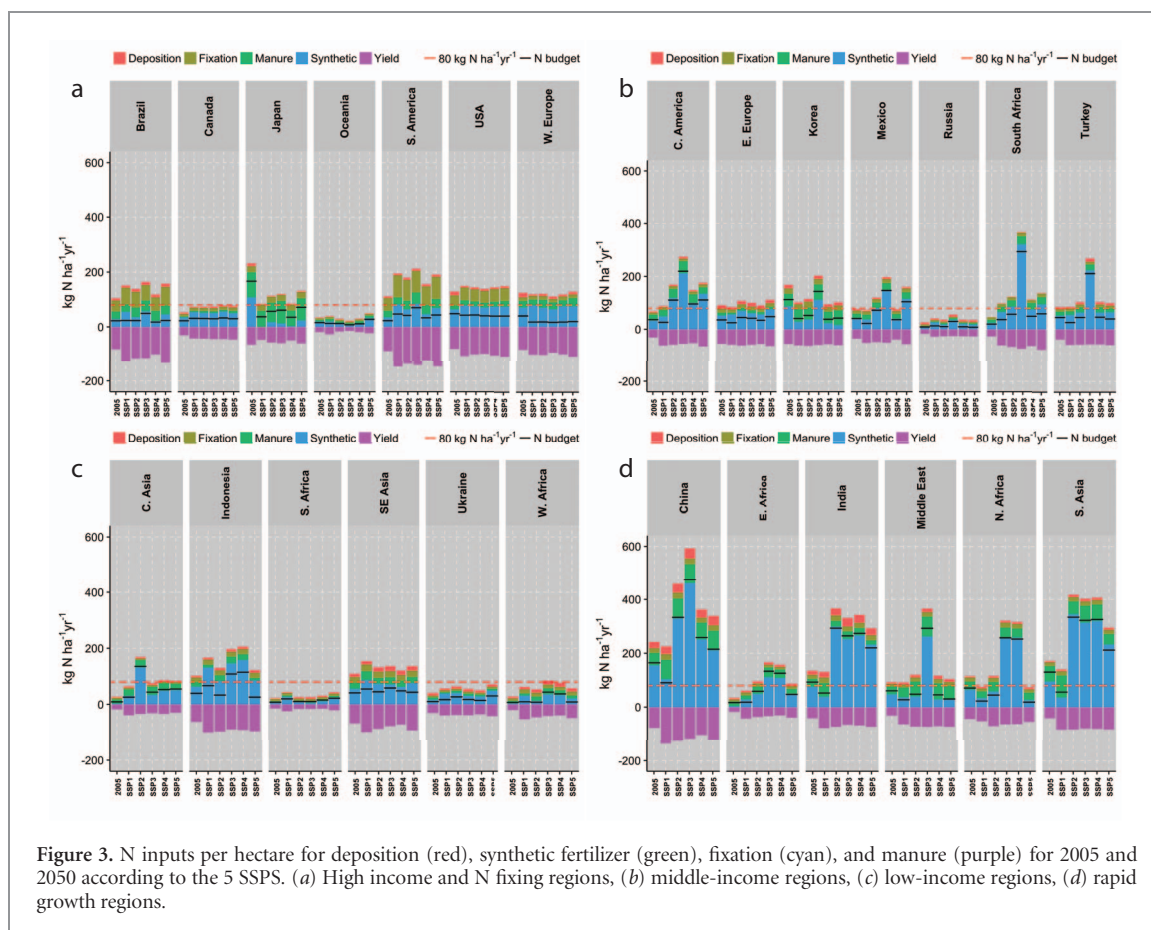


Figure 2. (a) Global N production, (b) global N budget; and global N inputs in croplands from (c) synthetic fertilizers, (d) fixation, (e) manure, and (f) deposition from 2006 until 2050. The green lines represent SSP1, the blue lines represent SSP2, the red lines represent SSP3, the orange lines represent SSP4, and the purple lines represent SSP5. Note the different Y axis for panels (a), (b), (c) vs panels (d), (e), (f).





**Figure 3.** N inputs per hectare for deposition (red), synthetic fertilizer (green), fixation (cyan), and manure (purple) for 2005 and 2050 according to the 5 SSPs. (a) High income and N fixing regions, (b) middle-income regions, (c) low-income regions, (d) rapid growth regions.

inputs > outputs) up to the year 2050. The N surplus in 2005 ( $86 \text{ Tg N yr}^{-1}$ ) increases for SSP2 ( $163 \text{ Tg N yr}^{-1}$ ), SSP3 ( $250 \text{ Tg N yr}^{-1}$ ), SSP4 ( $173 \text{ Tg N yr}^{-1}$ ), and SSP5 ( $124 \text{ Tg N yr}^{-1}$ ) and only decreases under SSP1 ( $55 \text{ Tg N yr}^{-1}$ ).

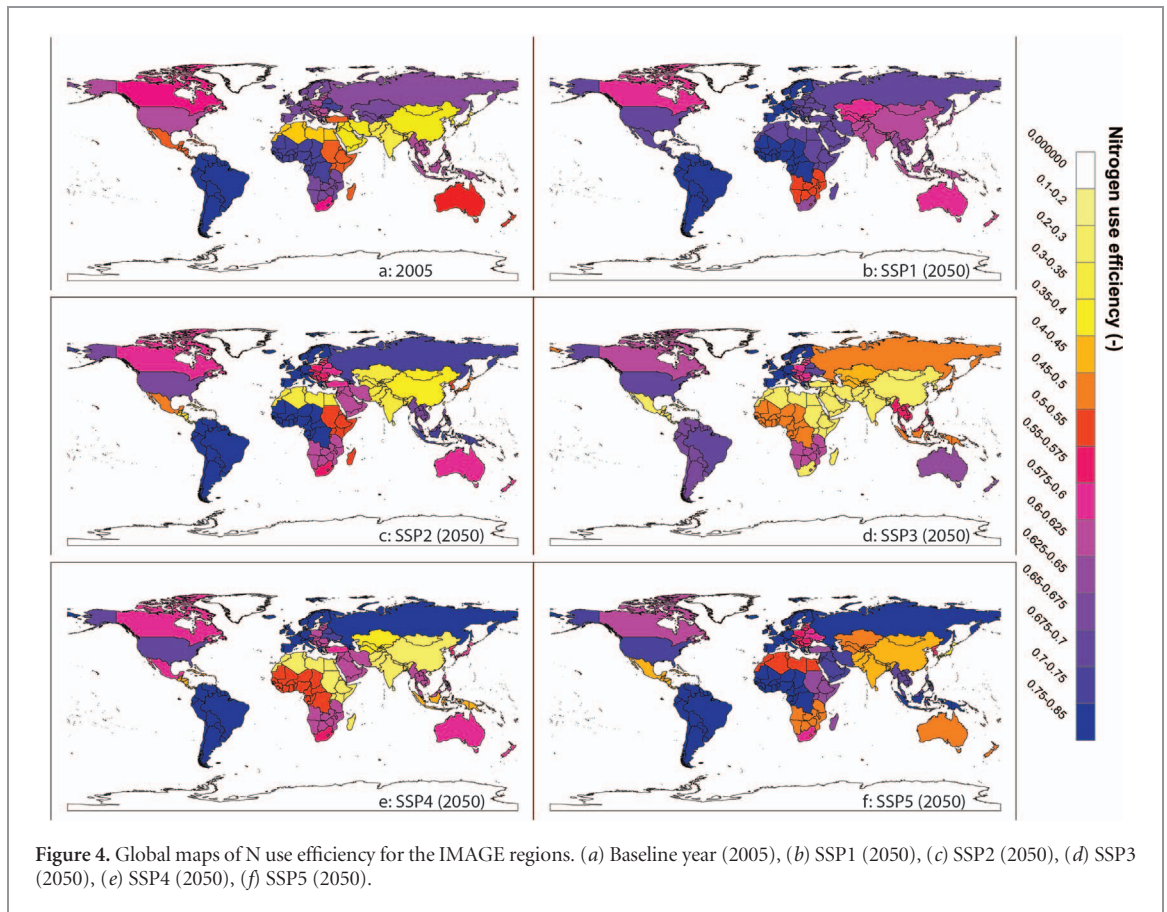
Figures 2(c)–(f) consists of the total N inputs into global croplands. In 2006, the sum of biological  $\text{N}_2$  fixation (figure 2(d)), manure (figure 2(e)) and atmospheric N deposition (figure 2(e)) constituted about 46% of the total N inputs into global croplands. The share of these inputs, however, changes substantially toward 2050 for the five SSPs. In SSP1 they eventually represent at 51% of N inputs. SSP2, SSP3, SSP4 show a decrease in the proportion of these inputs because of increased use of synthetic N fertilizers (figure 2(c)), with values of 44%, 33%, 37%, respectively. The temporal pattern for the N surpluses in global croplands (figure 2(b)) strongly resembles the synthetic N fertilizer trends (figure 2(c)), indicating that the former is highly controlled by the latter. The proportion of these inputs for SSP5 decreases toward 2025, but eventually increases back to a value of 46%. SSPs 2–5 all follow a steady increase in manure, deposition, and fixation as N inputs into croplands. SSP1 shows other patterns that reflect changing practices under this sustainable pathway, notably full manure recycling and lower atmospheric N deposition.

Figure 2(c) shows that global synthetic N fertilizer use by 2050 between the SSP scenarios varies

by a factor of three. The use in SSP1 remains for the most part stable, with values in the range of  $85 \text{ Tg N yr}^{-1}$ . SSP2 shows a rapid increase in global fertilizer use that reaches  $180 \text{ Tg N yr}^{-1}$  by 2030, and around  $185 \text{ Tg N yr}^{-1}$  by 2050. SSP3 is marked by the highest increase in synthetic N fertilizer inputs with values reaching  $260 \text{ Tg N yr}^{-1}$ . SSP4 shows an increase of global synthetic N fertilizer use that falls between those of SSP2 and SSP3 reaching values of  $200 \text{ Tg N yr}^{-1}$  in 2040, before dropping to around  $190 \text{ Tg N yr}^{-1}$ . SSP5 follows a trend similar to SSP2, but after 2020 levels off to a range of  $150\text{--}160 \text{ Tg N yr}^{-1}$ .

### 3.3. Regional N inputs under the 5 SSP scenarios

Figure 3 shows the change in N inputs, outputs and surpluses per hectare from the base year (2005) until 2050 for each of the SSPs and for each region. The high and middle income regions (figure 3(a)), with large acreage under  $\text{N}_2$ -fixing crops (Brazil and South America), show only a minor increase in the N-inputs to croplands, with the exception of Japan and Western Europe, which are characterized by a marked decrease and minor variation among the various SSPs. Figure 3(b) represents the remaining middle income regions. With the exception of Eastern Europe, all these regions show a significant increase of the areal input rates in SSP3. In the low-income regions, synthetic N fertilizer use is predicted to increase considerably from the contemporary low levels, particularly in Western



Africa. Figure 3(d) shows the N inputs for rapidly growing regions, which show a strong contrast between scenario results, particularly between SSP1 and SSP3. In all scenarios, the results for Eastern Africa show that synthetic N fertilizer use will have to increase rapidly to meet the crop demand projections. Only in high-income regions is the threshold surplus of  $80 \text{ kg N ha}^{-1} \text{ yr}^{-1}$  not reached in any of the scenarios by 2050. In the rest of the regions the areal surplus dramatically surpasses this limit, particularly in SSP2, SSP3 and SSP4. The potential emissions of N compounds to the environment in large regions such as China and India is expected to increase more than three-fold in the most pessimistic situations.

### 3.4. N use efficiencies and surpluses in 2050

Figure 4 shows the regional values of N use efficiency in 2005 and 2050 for the various SSPs. *NUE* is high in South America and Western Africa in 2005 (early stage of development as in Zhang *et al* (2015)), but much less so in the Middle East, North Africa, India, China and Rest of South Asia (figure 4(a)). SSP1 (figure 4(b)) shows the expected regional *NUE*s of Zhang *et al* (2015), with the lowest values at 60%. SSP2 (figure 4(c)) follows the GDP-pc  $-Y_{\text{max}}$  curve, and develops a marked interregional *NUE* variation, with the wealthy and  $\text{N}_2$  fixing regions remaining high, and regions such as North Africa, China, and India remaining low. SSP3 (figure 4(d)) causes a net decrease in the *NUE* for all regions, with values ranging from the

minimum allowable value of 20%–70%. SSP4 (figure 4(d)) shows an unequal global *NUE* development, while SSP5 (figure 4(e)) follows a *NUE* development to SSP2, but with comparably higher nutrient use efficiencies due to the higher GDP-pc for this scenario.

## 4. Discussion

Nitrogen fertilization has slowly increased since the early 20th century with a discernible acceleration post 1950. Different approaches have been used to estimate future total N inputs to croplands at the global scale. Bodirsky *et al* (2014), Liu *et al* (2016), and Lassaletta *et al* (2016) used food production, consumption and trade as a basis for forecasting the future N budget in croplands. Our methodology differs in that we do not model the crop N yields. Rather, we take the values generated by the integrated assessment model IMAGE 3.0, which has comprehensively incorporated the socioeconomic aspects of food production and trade to generate a regional N crop production demand. Our approach is similar to Lassaletta *et al* (2014), but whereas they used historical  $Y$  and  $I$  to calculate the evolution of  $Y_{\text{max}}$  from 1960–2010, we used GDP-pc to estimate  $Y_{\text{max}}$ , and calculated  $Y$  from IMAGE N production data and land use. These estimates were, in turn, used to calculate  $I$  (and eventually  $S$ ) from 2005 until 2050.



Based on historical trends, Galloway *et al* (2004) predicted N inputs of 270 Tg N yr<sup>-1</sup> by 2050, a figure that compares well with our SSP5 prediction (264 Tg N yr<sup>-1</sup>). Liu *et al* (2016) estimated that total N inputs to croplands will reach 270 Tg N yr<sup>-1</sup> by 2030, a value which falls between our SSP2 and SSP5 predictions (280 Tg N yr<sup>-1</sup> and 262 Tg N yr<sup>-1</sup>). Excluding our SSP1 scenario, the range of N inputs in croplands globally (262–337 Tg N yr<sup>-1</sup>) closely follow the estimates of Bouwman *et al* (2009) who projected future total N inputs into croplands in 2050 to be 292–378 Tg N yr<sup>-1</sup> for the four Millennium Ecosystem Assessment scenarios. Our SSP1 scenario, which follows the *NUEs* of Zhang *et al* (2015), has predicted total N inputs to croplands of (174 Tg N yr<sup>-1</sup>) by 2050. These values are slightly larger than the values of this latter study (160 Tg N yr<sup>-1</sup>). This discrepancy is due to the lower projected requirements in Zhang *et al* (2015) as compared to our SSP1 scenario (107 Tg N yr<sup>-1</sup> vs. 120 Tg N yr<sup>-1</sup>).

Our estimates of fertilizer use in 2050 range from 85 Tg N yr<sup>-1</sup> (SSP1) to 260 Tg N yr<sup>-1</sup> (SSP3). The FAO projection for synthetic N fertilizer use of 138 Tg N yr<sup>-1</sup> in 2050 (Alexandratos and Bruinsma 2012) is lower than SSP3, SSP4 and SSP5. SSP1 (sustainability) is much lower than FAO, and SSP2 (using FAO trends in productivity) is very similar. Crucially, only SSP1 would be within the planetary boundaries established for N, which are defined as a safe operating space for human societies (de Vries *et al* 2013, Steffen *et al* 2015).

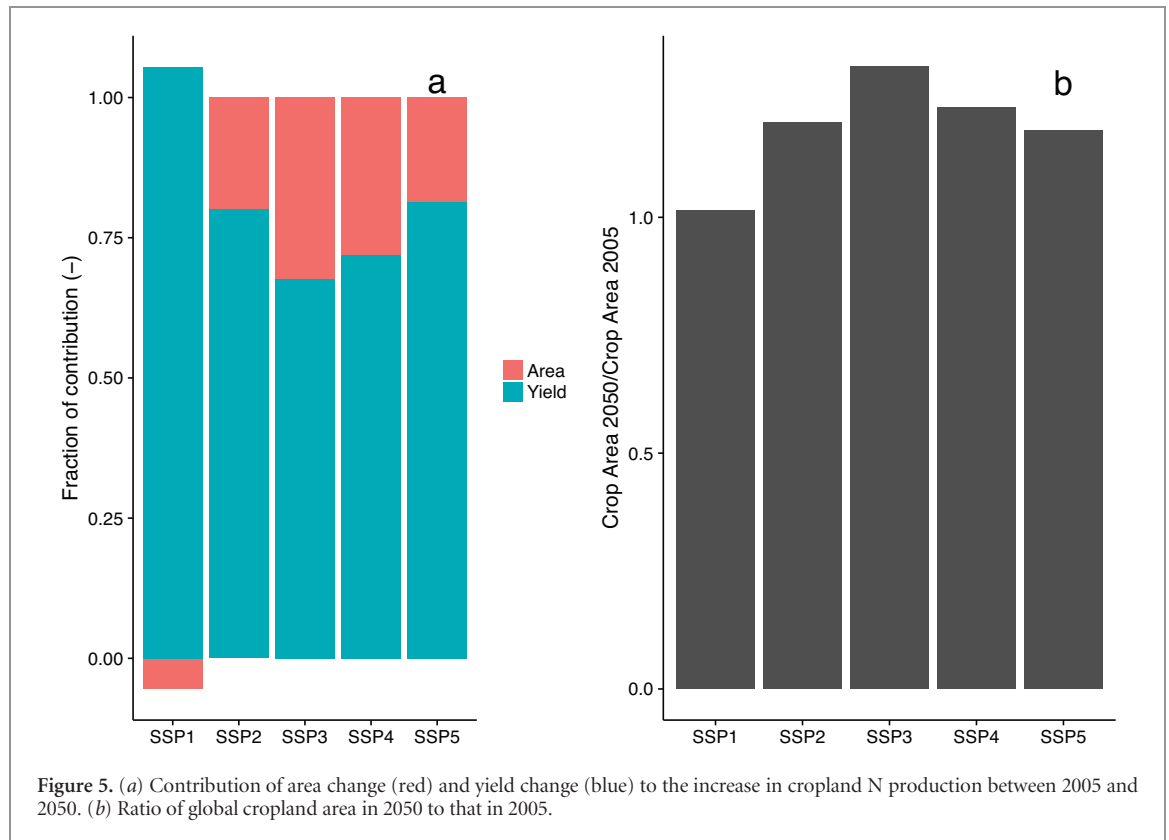
Advances in crop management can lead to both an upward shift in  $Y_{\max}$  and also an improvement in *NUE*. Lassaletta *et al* (2014) determined four possible temporal trajectories for  $Y_{\max}$  in various countries from 1960–2010. In their type 3 countries, there was a sufficient increase in  $Y_{\max}$  leading to a noticeable improvement in *NUE* and thus increasing crop N yields were maintained even with decreasing N inputs. Type 3 particularly applies to Western Europe. Their type 2 suggested an increase in  $Y_{\max}$  coupled to an increase in the N input, such that *NUEs* would improve despite an increase in synthetic N fertilizer usage, a situation observed in the USA and Brazil. For the future, a combination of these paths on a global scale is required in order to reach the *NUEs* suggested by Zhang *et al* (2015) by 2050. For instance, countries must increase their  $Y_{\max}$  values by a factor ranging from 1.1 (Japan) up to 4.4 (Eastern and Western Africa) during this timeframe. On a country basis, Lassaletta *et al* (2014) found that most countries in their type 2 and type 3 increased their  $Y_{\max}$  between 1960 and 2010 by a factor of 2.5, with increases of up to a factor of 4 for countries with low  $Y_{\max}$  values (< 50 Tg N yr<sup>-1</sup>) in 1960 (Lassaletta *et al* 2014). Thus, countries and regions with low  $Y_{\max}$  values may be able to achieve much larger increases in  $Y_{\max}$  toward the year 2050. Nevertheless, countries in Lassaletta's type 1 and type 4 had either a stable  $Y_{\max}$  or were in the N mining

realm. Thus, in order to reach the *NUE* of SSP1, Lassaletta's type 1 and type 4 countries must switch to type 2 or type 3.

High-income regions show little variations in N inputs between the five SSP scenarios because they are already characterized by high  $Y_{\max}$  values and *NUEs* in 2005. Some low- and middle-income regions show little variation for the various SSPs due to low crop demand arising from slow economic and population growth (e.g. Russia, Ukraine, Southern Africa). The greatest potential to improve N yields due to an increase in  $Y_{\max}$  thus lies in the remaining middle-income and the rapidly developing countries (figure 3). These regions include South Asia, India, and China, who are characterized by significant large populations and agricultural production, but whose  $Y_{\max}$  values are still relatively low (< 110 Tg N yr<sup>-1</sup>). These regions generally saw little variation in their  $Y_{\max}$  development for the 1960 to 2000 timeframe (type 1; Lassaletta *et al* 2014). Nevertheless, they are predicted to see an acceleration in both population growth and the demand for animal proteins in the future. Therefore, improving agricultural management can mean the difference between only moderate increases in synthetic N fertilizer application (SSP1) and a strong increase in synthetic N fertilizer application coupled to low *NUE* (figure 4), which consequently would lead to large N surpluses and N losses to the environment.

On a global scale, little to no temporal improvement in  $Y_{\max}$  represents the main assumption for our SSP3 scenario and our SSP4 scenario for low-income regions. These scenarios portray a world that will increasingly rely on synthetic N fertilization with *NUEs* significantly diminishing (figure 4). The SSP5 scenario represents a world with a population of similar proportion to SSP1 (2050) but with less environmental concern and more wealth, which directly translates into more animal protein consumption. While not as substantial as in SSP1, economic improvements in *NUEs* and  $Y_{\max}$  also occur in SSP5. However, the crop N production demanded from agricultural systems is highest of all SSPs, and the N budget difference between SSP5 and SSP1 typically exceeds 60 Tg N yr<sup>-1</sup>. Likewise, the N budgets increase with time for the SSP2 scenario, despite an increasing  $Y_{\max}$ . These scenarios demonstrate that  $Y_{\max}$  improvements that are solely tied to economic development are also not sufficient to keep up with the food demand and thus will require an increase in the future global synthetic N fertilizer use in agriculture.

The significant increase in crop production from higher N fertilization does not prevent the need for considerable expansion of agricultural land, which takes place under all scenarios except SSP1 (figure 5(b)). While at the IMAGE region scale, no N mining takes place, Lassaletta *et al* (2014) found that several individual countries such as Morocco and Nigeria have been characterized by negative soil N budgets since the 1960s. This type 4  $Y_{\max}$  path is associated with soil N



mining due to low fertilizer application. Depletion of N and other nutrients such as P could trigger cropland expansion. N mining, coupled to increasing N crop demand may pose environmental challenges, as it entices land encroachment and deforestation to make way for new agricultural land. Land expansion may significantly contribute to additional crop production, with up to 32% contribution for SSP3. In contrast, improvements in  $Y_{\max}$  for SSP1 lead to no requirements for areal cropland expansion (figure 5(a)).

Ultimately, the dramatic increase in the areal N surplus for most of the studied scenarios threatens the sustainability of food production systems. Only SSP1 reconciles crop production with water and air quality preservation, while in the other storylines the environmental burden would exceed acceptable limits of N pollution and additional environmental impacts due to new agricultural land acquisitions at the expense of natural areas.

Additional N fertilizer application is also required in intensive grasslands due to human consumption of ruminant products. Our estimated N extraction from grasslands with intensive ruminant production was roughly  $6.5 \text{ Tg N yr}^{-1}$  in 2005, which is somewhat higher than the  $3\text{--}4 \text{ Tg N yr}^{-1}$  previously estimated (Bouwman *et al* 2013). This N imbalance increases for most scenarios, with estimates in 2050 of  $4.9 \text{ Tg N yr}^{-1}$ ,  $23 \text{ Tg N yr}^{-1}$ ,  $45 \text{ Tg N yr}^{-1}$ ,  $42 \text{ Tg N yr}^{-1}$ , and  $28 \text{ Tg N yr}^{-1}$  for SSP1, SSP2, SSP3, SSP4, and SSP5, respectively. N extraction from intensive systems could eventually lead to insufficient N availability for grass production. Therefore, additional fertilization and/or better legume management of

intensive grasslands to meet these removed amounts must take place to maintain a balanced system. These values represent 6%–22% of the predicted synthetic N fertilization use in global croplands and thus potential future locations where N application may be necessary.

## 5. Conclusions

In order to achieve a global sustainable balance between cropland production and ecosystem preservation, it is important to limit the amount of N emitted to the environment. Following the *NUE* targets of Zhang *et al* (2015) for SSP1, the global anthropogenic reactive N produced can be stabilized at current levels (and even slightly decrease) on the global scale. This scenario also leads to a marked decrease in the reactive N demand per capita in agriculture. In contrast, all other scenarios forecast an increase in synthetic N fertilizers to boost agricultural production. The increase in demand due to poor socioeconomic choices could produce a severe environmental impairment in 2050.

## Acknowledgments

Funding for this research was provided by Marie Skłodowska-Curie Individual Fellowship Grant number 661163 awarded to JMM. AFB and AHWB received support from PBL Netherlands Environmental Assessment Agency through in-kind contributions to The New Delta 2014 ALW projects no. 869.15.015 and 869.15.014.

## ORCID iDs

J M Mogollón  <https://orcid.org/0000-0002-7110-5470>

A F Bouwman  <https://orcid.org/0000-0002-2045-1859>

## References

- Alexandratos N and Bruinsma J 2012 *World Agriculture Towards 2030/2050 the 2012 Revision* (Rome: Food and Agriculture Organization of the United Nations) ([www.fao.org/docrep/016/ap106e/ap106e.pdf](http://www.fao.org/docrep/016/ap106e/ap106e.pdf))
- Beusen A H W, Bouwman A F, Van Beek L P H, Mogollón J M and Middelburg J J 2016 Global riverine N and P transport to ocean increased during the 20th century despite increased retention along the aquatic continuum *Biogeosciences* **13** 2441–51
- Beusen A H W, Van Beek L P H, Bouwman A F, Mogollón J M and Middelburg J J 2015 Coupling global models for hydrology and nutrient loading to simulate nitrogen and phosphorus retention in surface water - description of IMAGE-GNM and analysis of performance *Geosci. Model Dev.* **8** 4045–67
- Billen G, Lassaletta L and Garnier J 2015 A vast range of opportunities for feeding the world in 2050: trade-off between diet, N contamination and international trade *Environ. Res. Lett.* **10** 025001
- Bodirsky B L *et al* 2014 Reactive nitrogen requirements to feed the world in 2050 and potential to mitigate nitrogen pollution *Nat. Commun.* **5** 3858
- Bouwman A F, Beusen A H W and Billen G 2009 Human alteration of the global nitrogen and phosphorus soil balances for the period 1970–2050 *Glob. Biogeochem. Cycles* **23** GB0A04
- Bouwman A F *et al* 2013 Exploring global changes in nitrogen and phosphorus cycles in agriculture induced by livestock production over the 1900–2050 period *Proc. Natl Acad. Sci. USA* **110** 20882–7
- Bouwman A F, Van Drecht G, Knoop J M, Beusen A H W and Meinardi C R 2005 Exploring changes in river nitrogen export to the world's oceans *Glob. Biogeochem. Cycles* **19** GB1002
- Bryan N S and van Grinsven H 2013 The role of nitrate in human health *Advances in Agronomy* ed D L Sparks (San Diego, CA: Elsevier) pp 153–82
- de Vries W, Kros J, Kroeze C and Seitzinger S P 2013 Assessing planetary and regional nitrogen boundaries related to food security and adverse environmental impacts *Curr. Opin. Environ. Sustain.* **5** 392–402
- Ebi K L, Kram T, Van Vuuren D P, O'Neill B C and Kriegler E 2014 A new toolkit for developing scenarios for climate change research and policy analysis *Environment* **56** 6–16
- EUNEP 2015 Nitrogen Use Efficiency (NUE)—an Indicator for the Utilization of Nitrogen in Agriculture and Food Systems Wageningen University, Alterra, PO Box 47 Bo 47, NL-6700 Wageningen, Netherlands, Wageningen ([www.eunep.com/wp-content/uploads/2017/03/N-ExpertPanel-NUE-Session-1.pdf](http://www.eunep.com/wp-content/uploads/2017/03/N-ExpertPanel-NUE-Session-1.pdf))
- Fowler D *et al* 2013 The global nitrogen cycle in the twenty-first century *Phil. Trans. R Soc. B Biol. Sci.* **368** 20130164
- Galloway J N *et al* 2004 Nitrogen cycles: past, present, and future *Biogeochemistry* **70** 153–226
- Galloway J N, Schlesinger W H, Levy III H, Michaels A and Schnoor J L 1995 Nitrogen fixation: anthropogenic enhancement—environmental response *Glob. Biogeochem. Cycles* **9** 235–52
- Giller K E *et al* 2004 Emerging technologies to increase the efficiency of use of fertilizer nitrogen *Agriculture and the Nitrogen Cycle* ed A R Mosier, J K Syers and J R Freney (Washington, DC: Island Press) pp 35–51
- Howarth R W and Marino R 2006 Nitrogen as the limiting nutrient for eutrophication in coastal marine ecosystems: evolving views over three decades *Limnol. Oceanogr.* **51** 364–76
- Kriegler E *et al* 2014 A new scenario framework for climate change research: the concept of shared climate policy assumptions *Clim. Change* **122** 401–14
- Lassaletta L *et al* 2016 Nitrogen use in the global food system: past trends and future trajectories of agronomic performance, pollution, trade, and dietary demand *Environ. Res. Lett.* **11** 095007
- Lassaletta L, Billen G, Grizzetti B, Anglade J and Garnier J 2014 50 year trends in nitrogen use efficiency of world cropping systems: The relationship between yield and nitrogen input to cropland *Environ. Res. Lett.* **9** 105011
- Liu J, Ma K, Ciais P and Polasky S 2016 Reducing human nitrogen use for food production *Sci. Rep.* **6** 30104
- Mogollón J M *et al* 2018 Future agricultural phosphorus demand according to the shared socio-economic pathways *Glob. Env. Change* in preparation
- Mueller N D *et al* 2017 Declining spatial efficiency of global cropland nitrogen allocation *Glob. Biogeochem. Cycles* **31** 245–57
- O'Neill B C *et al* 2014 A new scenario framework for climate change research: the concept of shared socioeconomic pathways *Clim. Change* **122** 387–400
- Rabalais N N 2002 Nitrogen in aquatic ecosystems *Ambio* **31** 102–12
- Rabalais N N *et al* 2010 Dynamics and distribution of natural and human-caused hypoxia *Biogeosciences* **7** 585–619
- Seitzinger S P *et al* 2010 Global river nutrient export: a scenario analysis of past and future trends *Glob. Biogeochem. Cycles* **24** GB0A08
- Smil V 2001 *Enriching the Earth: Fritz Haber, Carl Bosch, and the Transformation of World Food* (Cambridge: MIT Press)
- Steffen W *et al* 2015 Planetary boundaries: guiding human development on a changing planet *Science* **347** 1259855 ([www.pbl.nl/en/publications/integrated-assessment-of-global-environmental-change-with-IMAGE-3.0](http://www.pbl.nl/en/publications/integrated-assessment-of-global-environmental-change-with-IMAGE-3.0))
- Stehfest E, Van Vuuren D P, Kram T and Bouwman A F 2014 *Integrated Assessment of Global Environmental Change with IMAGE 3.0 Model Description and Policy Applications* (The Hague: PBL Netherlands Environmental Assessment Agency) ([www.pbl.nl/en/publications/integrated-assessment-of-global-environmental-change-with-IMAGE-3.0](http://www.pbl.nl/en/publications/integrated-assessment-of-global-environmental-change-with-IMAGE-3.0))
- Sutton M A *et al* 2013 Our nutrient world The challenge to produce more food and energy with less pollution Global Overview of Nutrient Management Centre for Ecology and Hydrology, Edinburgh on behalf of the Global Partnership on Nutrient Management and the International Nitrogen Initiative United Nations Environment Programme (UNEP), Edinburgh, UK (<http://library.wur.nl/WebQuery/wurpubs/fulltext/249094>)
- Turner R E, Rabalais N N, Justic D and Dortch Q 2003 Global patterns of dissolved N, P and Si in large rivers *Biogeochemistry* **64** 297–317
- Van Grinsven H J *et al* 2015a Losses of ammonia and nitrate from agriculture and their effect on nitrogen recovery in the European Union and the United States between 1900 and 2050 *J. Environ. Qual.* **44** 356–67
- van Grinsven J J M, Erisman J W, de Vries W and Westhoek H 2015b Potential of extensification of European agriculture for a more sustainable food system, focusing on nitrogen *Environ. Res. Lett.* **10** 025002
- van Ittersum M K *et al* 2016 Can sub-Saharan Africa feed itself? *Proc. Natl Acad. Sci. USA* **113** 14964–9
- van Vuuren D P *et al* 2017 Energy, land-use and greenhouse gas emissions trajectories under a green growth paradigm *Glob. Environ. Change* **42** 237–50
- Westhoek H *et al* 2014 Food choices, health and environment: effects of cutting Europe's meat and dairy intake *Glob. Environ. Change* **26** 196–205
- Zhang X *et al* 2015 Managing nitrogen for sustainable development *Nature* **528** 51–9
- Zhang X 2017 Biogeochemistry: a plan for efficient use of nitrogen fertilizers *Nature* **543** 322–3