



Universiteit  
Leiden  
The Netherlands

## Arthropathies in inflammatory bowel disease : Characteristics and impact on daily functioning

Erp, S.J.H. van

### Citation

Erp, S. J. H. van. (2018, February 13). *Arthropathies in inflammatory bowel disease : Characteristics and impact on daily functioning*. Retrieved from <https://hdl.handle.net/1887/61044>

Version: Not Applicable (or Unknown)

License: [Licence agreement concerning inclusion of doctoral thesis in the Institutional Repository of the University of Leiden](#)

Downloaded from: <https://hdl.handle.net/1887/61044>

**Note:** To cite this publication please use the final published version (if applicable).

Cover Page



Universiteit Leiden



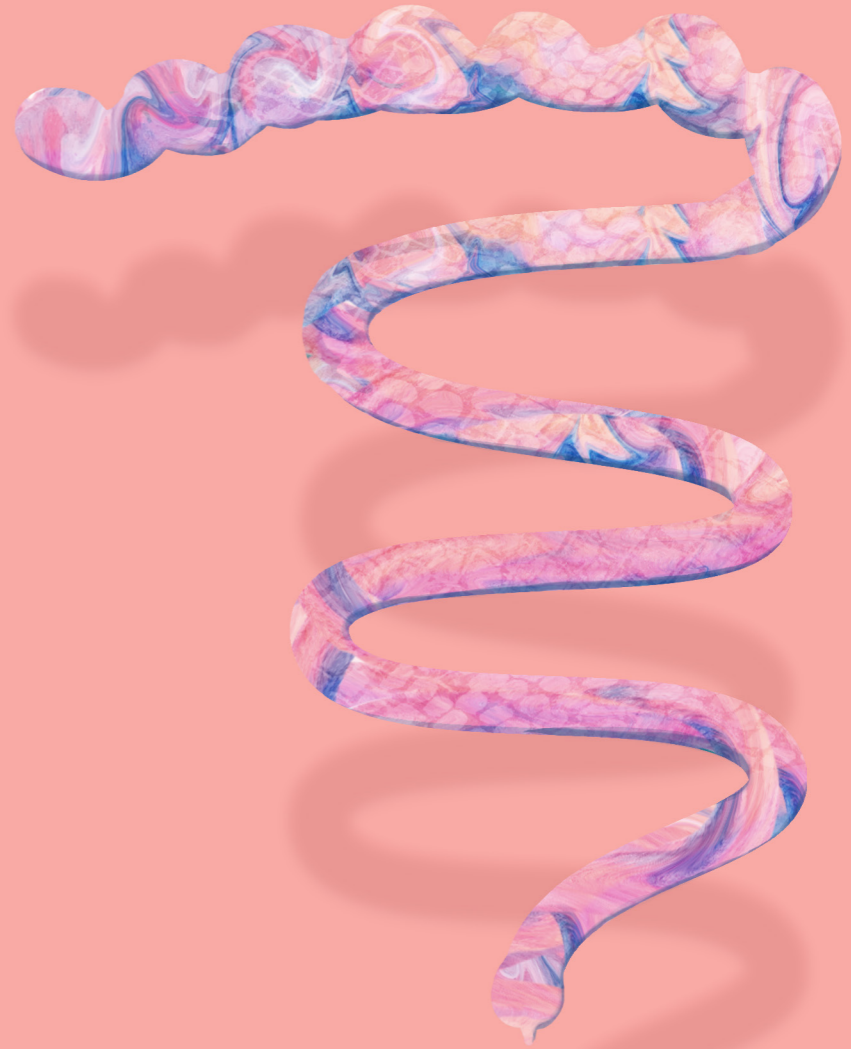
The handle <http://hdl.handle.net/1887/61044> holds various files of this Leiden University dissertation

**Author:** Erp, Sanne J.H. van

**Title:** Arthropathies in inflammatory bowel disease : characteristics and impact on daily functioning

**Date:** 2018-02-13

Sanne J.H. van Erp



# ARTHROPATHIES IN INFLAMMATORY BOWEL DISEASE

Characteristics and impact on daily functioning

ARTHROPATHIES IN INFLAMMATORY BOWEL DISEASE Characteristics and impact on daily functioning

Sanne J.H. van Erp