



Universiteit
Leiden
The Netherlands

Exploring the potential of triage and task-shifting in preventive child health care

Bezem, J.

Citation

Bezem, J. (2017, November 28). *Exploring the potential of triage and task-shifting in preventive child health care*. Retrieved from <https://hdl.handle.net/1887/55848>

Version: Not Applicable (or Unknown)

License: [Licence agreement concerning inclusion of doctoral thesis in the Institutional Repository of the University of Leiden](#)

Downloaded from: <https://hdl.handle.net/1887/55848>

Note: To cite this publication please use the final published version (if applicable).

Cover Page



Universiteit Leiden



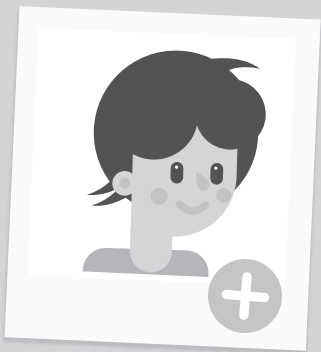
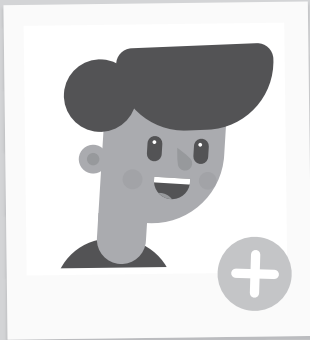
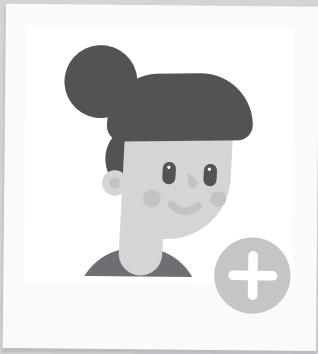
The handle <http://hdl.handle.net/1887/55848> holds various files of this Leiden University dissertation.

Author: Bezem, J.

Title: Exploring the potential of triage and task-shifting in preventive child health care

Issue Date: 2017-11-28

Dankwoord



Dit proefschrift had hier niet gelegen zonder de medewerking en ondersteuning van velen.

Graag wil ik iedereen bedanken die het voor mij mogelijk hebben gemaakt om dit proefschrift te schrijven.

Op 7 juni 2010 werd in een expertmeeting de evaluatie van de pilot studie naar de triage methodiek gepresenteerd onder voorzitterschap van Simone Buitendijk. Na afloop prikkelde Simone mij om te gaan promoveren op de effectstudie naar de triage methodiek die in voorbereiding was en bood zij aan mijn promotor te worden. Toen ik aangaf de uitdaging aan te gaan sprak zij de voor mij nu historische woorden "dit is een memorabel moment waaraan je later nog terug zal denken". En dat moment is nu aangebroken. Simone bedankt voor je inspiratie en positief kritische scherpe blik.

Een aantal mensen wil ik verder in het bijzonder bedanken:

Mattijs Numans, mijn promotor, die meedacht, bijstuurde en mede het proces tot een goed einde heeft gebracht. Je bleef opbouwend tot het laatst.

Mijn co-promotor Paul Kocken voor het vele, vele werk en de correcties die mij altijd weer aan het denken hebben gezet en die betekenden dat mijn artikelen steeds beter werden. Je bleef kritisch en scherp tot het laatst.

Simone, Mattijs en Paul hebben mij geleerd om wetenschappelijk te denken.

De leden van de beoordelingscommissie voor de tijd en aandacht die zij hebben besteed aan mijn proefschrift.

Mijn overige mede-auteurs die tevens hebben bijgedragen aan het onderzoek: Mascha Kamphuis, Meinou Theunissen, Ria Reis, Debbie Heinen, Elske van den Akker-van Marle en Kitty van der Ploeg.

De deelnemende Jeugdgezondheidszorg organisaties, de ouders, kinderen en leerkrachten. Zonder jullie hadden we de triage methodiek niet kunnen onderzoeken.

Paula van Dommelen voor de statistische ondersteuning bij de analyses.

De gemeente bestuurders in de regio Gelderland-Midden die mij hebben uitgedaagd om een methodiek te ontwikkelen ten behoeve van een meer gedifferentieerd zorgaanbod door de Jeugdgezondheidszorg.

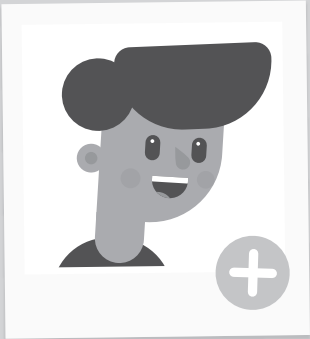
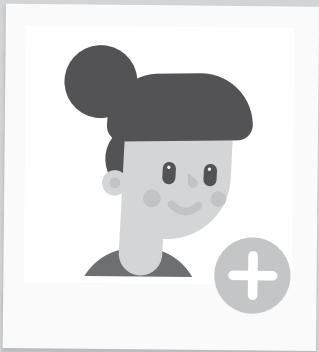
Ype Schat, mijn directeur, voor de mogelijkheden, die ik vanuit de VGGM kreeg om te promoveren. Je stimuleerde mij om het af te ronden voor je pensioen.

Collega's van de VGGM en Eveline Hund, die mijn gedachtengoed over triage en taakherschikking hebben omgezet in praktische werkinstructies en protocollen.

Mijn paranimfen Debbie Heinen en Francine Molenaar voor hun ondersteuning op de achtergrond en mij stimuleerden om door te blijven gaan.

En natuurlijk mijn familie en vrienden. Jan, je hebt met veel steun genoeg moeten nemen met mijn vele uurtjes achter de laptop.

Curriculum Vitae



Janine Bezem was born on 14 August 1957 in Rotterdam (Netherlands). After completing her secondary education (VWO) at the Alexander Hegius Scholengemeenschap in Deventer in 1975, she studied medicine at Groningen University and received her medical degree in 1983.

During her medical studies, Janine became interested in prevention and Preventive Child Health care (PCH) in particular. She therefore completed a number of housemanships in child health care (preventive and otherwise) including a three-month housemanship in a children's ward in a hospital in London, England. She participated in a research project about Minor Neurological Dysfunction in children supervised by Professor Touwen at Groningen University, where she also taught paediatric psychiatry to students. She started work as a PCH physician ("schoolarts") at the Regional Public Health Service GGD West-Veluwe Vallei in 1984 and, in 1985, she began her training as a public health physician at the University of Nijmegen.

In 2000, after a number of years working as a PCH physician, she was appointed head of the Preventive Child Health Care Department of the Gelderland Midden Regional Health Service (now known as the Gelderland-Midden Health and Safety Region (VGGM)). She completed various management courses at Schouten & Nelissen and trained as a mediator at the Van der Hoeve Negotiation Advisory Board.

From 2007 onwards, she combined her work as a manager with the development and study of the triage approach to increase the quality and efficiency of PCH. As a PCH physician and as head of the PCH department she had already acquired extensive experience with the practical implementation of PCH: the subject of this thesis was born.

Janine was involved intensively in the development and implementation of the triage approach at the GGD Gelderland Midden/VGGM. She was also the leading author of the paper 'Focus on the vulnerable child', which was the basis for the triage approach. After the triage approach was implemented, she wanted to know more about the results of the approach. Working with TNO and two Regional Public Health Services, she was given the opportunity to conduct a pilot study of the triage approach, followed by a more comprehensive study

with TNO, Leiden University Medical Center (LUMC) and four Regional Public Health Services. In September 2011, she was given a post as a research trainee at the TNO Child Health Department and, since 2013, she has been working on this thesis at the LUMC. She has developed and studied a vision about the implementation of triage and task-shifting that has adopted by several PCH services in the Netherlands.

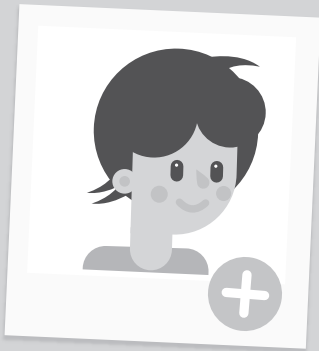
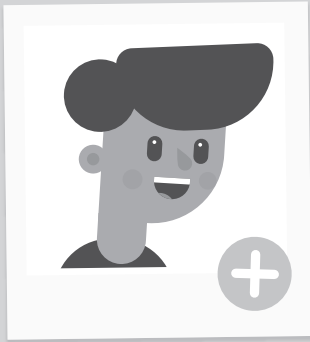
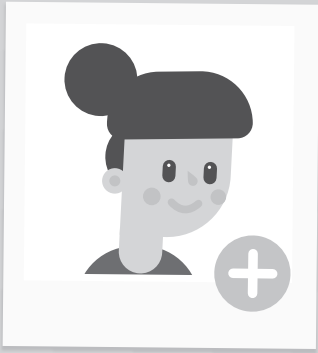
Since 2009, she has been involved in several local, regional and national activities relating to the development of youth care and the development of PCH in particular. Janine participated in a platform called "Jeugdialoog" (Youth Dialogue), an intersectoral collaboration network for the development of the Dutch Youth Care system. She was a member of the "Commissie de Winter, evaluatie van het Basispakket Jeugdgezondheidszorg, VWS" (the De Winter commission for the evaluation of the Basic Package for Preventive Child Health care, Ministry of Health, Welfare and Sport), and went on to be a member of the "begeleidingscommissie uitvoeringsvarianten Basispakket JGZ, NCJ" (monitoring committee for the implementation variants of the JGZ Basic Package).

She has been a member of several ZonMw committees: sub-commissie Interventies, programma Zorg voor Jeugd (the Interventions subcommittee, the Youth Care Programme), "commissie vernieuwing uitvoeringspraktijk Jeugdgezondheidszorg" (the commission for the renovation of implementation practices in Preventive Child Health care) and "werkgroep gemeentelijke pilots vechtscheidingen" (the working group for municipal pilot projects targeting problematic divorce). She has participated in research projects in the field of PCH, in particular about the flexibility of the organisation of PCH.

In addition to her professional activities, Janine is a board member of the "Stichting Jeugdsportfonds Arnhem" (Arnhem Youth Sport Fund).

Janine Bezem lives in Ede and is married to Jan Harms. They have two sons, Robert-Jan and Jorrit, and a daughter, Lisanne.

List of publications



List of publications

Bezem J, Theunissen M, Buitendijk SE, Kocken PL.

A novel triage approach of child preventive health assessment: an observational study of routine registry-data

BMC Health Services Research 2014;14:498

Bezem J, Theunissen M, Kamphuis M, Numans ME, Buitendijk SE, Kocken PL.

A novel triage approach to identifying health concerns

Pediatrics 2016;137(3):e20150814

Bezem J, Kocken PL, Kamphuis M, Theunissen M, Buitendijk SE, Numans ME.

Triage in Preventive Child Health care: a prospective cohort study of care use and referral rates for children at risk

Accepted for publication by BMJ Open 27-09-2017

Bezem J, van der Ploeg C, Numans M, Buitendijk S, Kocken P, van den Akker-van Marle E.

Preventive Child Health care at elementary school age: the costs of routine assessments with a triage approach

PLoS ONE 2017;12(8):e0183068

Bezem J, Heinen D, Reis R, Numans ME, Buitendijk SE, Kocken PL.

Improving access to school health services as perceived by school professionals

Submitted

Bezem J, Kocken PL. Het digitale dossier Jeugdgezondheidszorg: schaaap met de vijf poten?

Tsg. 2014;92(7):249

