



Universiteit
Leiden
The Netherlands

Psoriasis-Associated Late Cornified Envelope (LCE) Proteins Have Antibacterial Activity

Niehues, H.; Tsoi, L.C.; Krieken, D.A. van der; Jansen, P.A.M.; Oortveld, M.A.W.; Rodijk-Olthuis, D.; ... ; Oortveld, M.A.W

Citation

Niehues, H., Tsoi, L. C., Krieken, D. A. van der, Jansen, P. A. M., Oortveld, M. A. W., Rodijk-Olthuis, D., ... Schalkwijk, J. (2017). Psoriasis-Associated Late Cornified Envelope (LCE) Proteins Have Antibacterial Activity. *Journal Of Investigative Dermatology*, 137(11), 2380-2388. doi:10.1016/j.jid.2017.06.003

Version: Not Applicable (or Unknown)

License: [Leiden University Non-exclusive license](#)

Downloaded from: <https://hdl.handle.net/1887/55803>

Note: To cite this publication please use the final published version (if applicable).



Psoriasis-Associated Late Cornified Envelope (LCE) Proteins Have Antibacterial Activity

Hanna Niehues^{1,8}, Lam C. Tsoi^{2,3,4,8}, Danique A. van der Krieken^{1,8}, Patrick A.M. Jansen¹, Merel A.W. Oortveld¹, Diana Rodijk-Olthuis¹, Ivonne M.J.J. van Vlijmen¹, Wiljan J.A.J. Hendriks⁵, Richard W. Helder⁶, Joke A. Bouwstra⁶, Ellen H. van den Bogaard¹, Philip E. Stuart², Rajan P. Nair², James T. Elder^{2,7,9}, Patrick L.J.M. Zeeuwen^{1,9} and Joost Schalkwijk^{1,9}

Terminally differentiating epidermal keratinocytes express a large number of structural and antimicrobial proteins that are involved in the physical barrier function of the stratum corneum and provide innate cutaneous host defense. Late cornified envelope (LCE) genes, located in the epidermal differentiation complex on chromosome 1, encode a family of 18 proteins of unknown function, whose expression is largely restricted to epidermis. Deletion of two members, *LCE3B* and *LCE3C* (*LCE3B/C-del*), is a widely-replicated psoriasis risk factor that interacts with the major psoriasis-psoriasis risk gene *HLA-C*06*. Here we performed quantitative trait locus analysis, utilizing RNA-seq data from human skin and found that *LCE3B/C-del* was associated with a markedly increased expression of *LCE3A*, a gene directly adjacent to *LCE3B/C-del*. We confirmed these findings in a 3-dimensional skin model using primary keratinocytes from *LCE3B/C-del* genotyped donors. Functional analysis revealed that LCE3 proteins, and LCE3A in particular, have defensin-like antimicrobial activity against a variety of bacterial taxa at low micromolar concentrations. No genotype-dependent effect was observed for the inside-out or outside-in physical skin barrier function. Our findings identify an unknown biological function for LCE3 proteins and suggest a role in epidermal host defense and *LCE3B/C-del*-mediated psoriasis risk.

Journal of Investigative Dermatology (2017) 137, 2380–2388; doi:10.1016/j.jid.2017.06.003

INTRODUCTION

Psoriasis vulgaris is a common inflammatory skin disease determined by both genetic and environmental factors (Nestle et al., 2009). Based on a number of genome wide association studies and meta-analyses thereof, more than 60 susceptibility

loci have been identified that account for 20–25% of psoriasis heritability (Tsoi et al., 2012; Tsoi et al., 2015b; Zuo et al., 2015). Psoriasis is characterized by dysregulated cutaneous immune responses involving innate immunity (tumor necrosis factor- α and NF- κ B pathways) and exaggerated T helper type 1 (Th1) and T helper type 1 (Th17) lymphocyte activation (Johnston et al., 2013; Jordan et al., 2012; Lowes et al., 2014). In addition, psoriasis-associated genes expressed by keratinocytes and with a presumed role in epidermal homeostasis have also been genetically implicated in psoriasis, including the late cornified envelope (LCE) genes (de Cid et al., 2009; Huffmeier et al., 2010) and the beta-defensins (Hollox et al., 2008). Despite the identification of many candidate genes, functional studies that explain the contribution of genetic polymorphism to psoriasis risk are largely lacking. A number of studies, however, have shown a plausible link between genes from susceptibility loci and immunobiological features of psoriasis such as an association between variation at *TNFAIP3* and response to tumor necrosis factor- α blockade (Tejasvi et al., 2012), and the association between the *IL12B* risk allele and increased Th1-cytokine levels (Johnston et al., 2013). In addition, only very few risk loci involve coding variants that are amenable to experimental verification in animal models or in vitro cellular models of skin biology or inflammation (Jordan et al., 2012; Tsoi et al., 2012). Among the psoriasis susceptibility regions, the major histocompatibility complex class I gene *HLA-C*06:02* (PSORS1) and the LCE region harboring a deletion of the *LCE3B* and *LCE3C* genes (originally designated PSORS4) (Capon et al., 2001) provide

¹Department of Dermatology, Radboud University Medical Center, Radboud Institute for Molecular Life Sciences, Nijmegen, The Netherlands;

²Department of Dermatology, University of Michigan, Ann Arbor, Michigan, USA; ³Department of Computational Medicine & Bioinformatics, University of Michigan, Ann Arbor, Michigan, USA; ⁴Department of Biostatistics, University of Michigan, Ann Arbor, Michigan, USA;

⁵Department of Cell Biology, Radboud University Medical Center, Radboud Institute for Molecular Life Sciences, Nijmegen, The Netherlands;

⁶Leiden Academic Center for Drug Research, Department of Drug Delivery Technology, Gorlaeus Laboratories, Leiden University, Leiden, The Netherlands; and ⁷Ann Arbor Veterans Affairs Hospital, Ann Arbor, Michigan, USA

⁸These authors contributed equally to this work.

⁹These senior authors contributed equally to this work.

Correspondence: Joost Schalkwijk, Department of Dermatology, Radboud University Medical Center, Radboud Institute for Molecular Life Sciences, René Descartesdreef 1, 6525 GL, Nijmegen, The Netherlands. E-mail: Joost.Schalkwijk@radboudumc.nl

Abbreviations: AMP, antimicrobial peptide; EDC, epidermal differentiation complex; LCE, late cornified envelope; *LCE3B/C-del*, the 32 kb deleted fragment comprising *LCE3B* and *3C*; NN, normal skin; PN, nonlesional psoriatic skin; PP, lesional psoriatic skin; Th1, T helper type 1; Th17, T helper type 17; SC, stratum corneum; wt, wild type

Received 3 April 2017; revised 16 May 2017; accepted 5 June 2017; accepted manuscript published online 17 June 2017; corrected proof published online 31 August 2017

plausible candidates to investigate at the functional level. *HLA-C*06:02* is by far the strongest psoriasis risk factor, with an odds ratio estimated to be between 2.6 and 5 in Caucasians (Genetic Analysis of Psoriasis Consortium & the Wellcome Trust Case Control Consortium 2 et al., 2010; Nair et al., 2009), and the odds ratio for the *LCE* deletion (odds ratio ~ 1.3) (Huffmeier et al., 2010) is one of the highest among the remaining psoriasis-associated loci (Tsoi et al., 2012). *LCE* genes are expressed only in epidermis and oral epithelia (Bergboer et al., 2011; Jackson et al., 2005) and are assumed to encode structural proteins with a role in epithelial barrier formation; however, no functional studies supporting this contention have been published so far. Remarkably, the *LCE3* group, which encompasses the *LCE3B* and *LCE3C* genes, is under regulation of psoriasis-associated Th1 and Th17 cytokines (Bergboer et al., 2011; Niehues et al., 2016). *LCE3B/C-del* affects a 32 kb fragment in the epidermal differentiation complex (EDC) on chromosome 1, which is commonly deleted in the non-African population (allele frequency of *LCE3B/C-del*: 60–70%) (de Cid et al., 2009). In addition to the loss of the protein coding genes *LCE3B* and *LCE3C*, it also removes three intergenic fragments that harbor potential regulatory sequences (de Guzman Strong et al., 2010). In this study, we show that *LCE3B/C-del* causes an upregulation of the flanking *LCE3A* gene. Our hypothesis-driven functional studies have revealed that these three proteins are unlikely to be involved in skin barrier function and rather represent antimicrobial proteins.

RESULTS

Expression quantitative trait loci analysis of genes in the EDC

The association results between the deletion surrogate rs4112788 and expression traits are shown in Figure 1a. Within the EDC region, only the expression levels of *LCE3A*, *LCE3B*, and *LCE3C* are significantly (false discovery rate < 0.1) associated with the marker in both normal (NN) and

psoriatic (PP) skin (Table 1). As expected, expression of both *LCE3B* and *LCE3C* are decreased in PP skin in the presence of the G allele of rs4112788, which is in linkage disequilibrium with *LCE3B/C del*. We observed the same result for *LCE3C* expression in NN, whereas *LCE3B* could not be assessed as it was not expressed in more than 20% NN skin samples. In fact, of the 80 NN samples, we detected expression of *LCE3A* and *LCE3C* in 43 and 40 samples, respectively, but *LCE3B* was expressed only in one sample. In contrast, of the 92 PP samples, we detected expression of *LCE3A*, *LCE3B*, and *LCE3C* in 92, 48, and 55 samples, respectively. Figure 1b shows that *LCE3A* expression levels were elevated in individuals with the GG genotype (surrogate for del/del) compared with individuals with the AA genotype, in both NN and PP samples. *LCE3A* is strongly and significantly ($P = 7.7 \times 10^{-30}$) upregulated in PP (mean expression level = 5.8×10^3) compared with NN skin (mean expression level = 20). The fold change difference in expression between GG/AA genotypes is 2.1 in PP samples, and the contrast is even higher in NN samples (mean expression level is 35 for GG and 0 for AA). We did not observe a significant genotype difference for *LCE3A* expression in nonlesional psoriatic (PN) skin samples, likely due to the smaller sample size. RNA-seq data showed that expression of *LCE3A* behaves similarly between NN and PN skin (NN = 4.6 vs. 4.5 in PN skin). See Supplementary Table S1 online for the normalized RNAseq expression data of all individuals.

Genotype-dependent expression of LCE genes in 3-dimensional (3D) reconstructed epidermis

To substantiate these findings in vitro, and to determine *LCE3B/C-del*-dependent epidermal morphology and differentiation, we generated 3D reconstructed epidermis from wild type/wild type (wt/wt) (N = 6) and del/del (N = 6) keratinocytes. We have previously shown that in such a 3D reconstructed epidermis model, the spatiotemporal expression of LCE

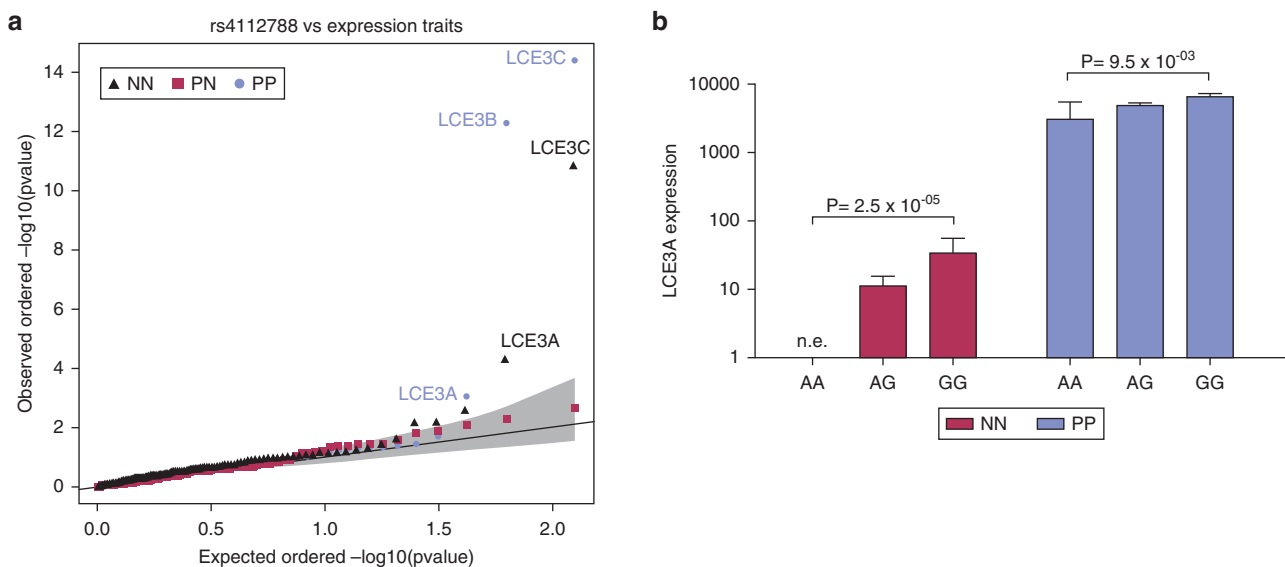


Figure 1. In vivo eQTL analysis. (a) Quantile-quantile plot of rs4112788 versus expression traits in the epidermal differentiation complex region. The shaded area indicates 95% confidence interval of statistical significance. (b) Estimated effect size of *LCE3B/C-del* on in vivo *LCE3A* expression in the eQTL data set. Error bars = standard error of the mean. eQTL, expression quantitative trait loci; LCE, late cornified envelope; n.e., no expression; NN, normal skin; PN; nonlesional psoriatic skin; PP, lesional psoriatic skin.

Table 1. Top significant eQTL results in NN and PP skin between rs4112788 and EDC genes

Skin type	Gene	Relative location to deletion	Effect	P	FDR
Normal	<i>LCE3C*</i>	Within	–	1.60×10^{-11}	1.96×10^{-9}
	<i>LCE3A*</i>	Downstream	+	5.36×10^{-5}	3.30×10^{-3}
	<i>RP11-216N14.9</i>	Downstream	+	2.75×10^{-3}	1.13×10^{-1}
	<i>LCE1D</i>	Downstream	–	7.1×10^{-3}	0.18
	<i>LINGO4</i>	Upstream	–	7.29×10^{-3}	0.18
Psoriasis	<i>LCE3C*</i>	Within	–	4.09×10^{-15}	5.11×10^{-13}
	<i>LCE3B*</i>	Within	–	5.34×10^{-13}	3.34×10^{-11}
	<i>LCE3A*</i>	Downstream	+	8.73×10^{-4}	3.64×10^{-2}
	<i>LCE1D</i>	Downstream	–	1.92×10^{-2}	0.6
	<i>ILF2</i>	Downstream	–	3.49×10^{-2}	0.67

Note: LCE3B is not expressed in more than 20% of the NN skin samples; therefore the eQTL analysis was not conducted. Abbreviations: EDC, epidermal differentiation complex; eQTL, expression quantitative trait loci; LCE, late cornified envelope; NN, normal skin; PP, lesional psoriatic skin. *Indicates significance at the false discovery rate (FDR \leq 0.1) level. “Effect” refers to whether the gene is up- (+) or downregulated (–) in the presence of the G allele for rs4112788 (surrogate for del/del).

proteins is similar to in vivo epidermis (Niehues et al., 2016). Histopathological examination of the 3D reconstructed epidermis did not reveal obvious morphological differences between the two genotypes (hematoxylin and eosin staining), nor did immunohistochemical staining reveal abnormalities in expression of differentiation proteins (Supplementary Figure S1 online). Confirming what was observed in vivo (Figure 1a and b), quantitative PCR analysis showed a significant effect of the *LCE3B/C-del* on *LCE3A* expression (Figure 2a–c): *LCE3A* mRNA expression was 6.6-fold higher in *del/del* keratinocytes compared with *wt/wt* keratinocytes ($P < 0.003$). To mimic psoriasis in vitro and confirm the in vivo findings, we stimulated 3D reconstructed epidermis with psoriasis-associated cytokines. To verify the effect of cytokine stimulation, expression levels of known Th1 and Th1/Th17 responsive genes *CXCL10* and *DEFB4* were analyzed and found to be strongly induced irrespective of the *LCE3B/C-del* genotype (Supplementary Figure S2a and b online). After Th1- but not Th17-cytokine stimulation, we found a significant genotype effect (4.7-fold, $P < 0.05$, Figure 2b and c). Generally, Th1 cytokines induced expression of all tested LCE family genes (Figure 2d), whereas Th17 cytokines specifically increased *LCE2* and *LCE3* genes (Figure 2e). These in vitro findings corroborate the in vivo findings of the effect of *LCE3B/C-del* on *LCE3A* expression. The fold increase in 3D reconstructed epidermis of *del/del* keratinocytes is modest compared with the huge relative increase in vivo, which is caused by the relatively high basal expression of *LCE3A* in *wt/wt* cells in the skin equivalents, whereas *LCE3A* expression in vivo for the AA (*wt/wt*) genotype is zero.

LCE3B/C del is not associated with skin barrier alterations

We asked whether genotype-dependent alterations of *LCE3A* expression, that is, the absence of *LCE3B* and *LCE3C* and the upregulation of *LCE3A*, had functional consequences that would provide a clue to its genetic association with psoriasis. Many epidermis-specific genes encode either structural proteins involved in physical barrier function (Candi et al., 2005) or small proteins that provide an antimicrobial barrier (Gallo and Hooper, 2012; Schroder and Harder, 2006). Limited

proteomic data suggest that LCE proteins are part of the stratum corneum (SC), hence participate in physical skin barrier function, although direct proof is lacking. We therefore assessed transepidermal water loss from 3D reconstructed epidermis of *wt/wt* and *del/del* genotypes to unveil a possible effect on inside-out barrier function. No difference in transepidermal water loss was observed between the genotypes (Figure 3a–c). We noticed that cytokine-stimulated 3D reconstructed epidermis had a lower transepidermal water loss compared with control 3D constructs (control vs. Th17, $P < 0.001$), but again no differences between the two genotypes were observed (Figure 3d). The outside-in barrier function was investigated by the analysis of the penetration of hydrophilic and hydrophobic low molecular weight tracers. Quantitative determination of hydrocortisone diffusion by ultra performance liquid chromatography analysis through the SC did not reveal a difference between the two genotypes (Figure 3e). Furthermore, we did not observe Lucifer yellow penetration in constructs of any of the genotypes, under unstimulated and Th1- or Th17-cytokine conditions (Figure 3f). Collectively, these data indicate that *LCE3B/C-del* is not associated with altered skin barrier function.

LCE3 proteins have antibacterial activity

Keratinocytes are a known source of antimicrobial peptides (AMPs) such as defensins, secretory leukocyte protease inhibitor, skin-derived antileukoprotease/Elafin, psoriasin, and LL37, many of which are small, cationic, and/or cysteine-rich proteins (Harder et al., 2013). As LCE3 proteins are also small (9–11 kD) and cationic (isoelectric points > 8.6) having an extremely high cysteine content (18–23%), we tested the hypothesis that LCE proteins are antimicrobial. On the basis of the finding that *LCE3A* expression is firmly increased in *LCE3B/C-del* carriers, we decided to study the antimicrobial activity for all three LCE3 proteins (*LCE3A/B/C*). We used chemically synthesized *LCE3A*, *LCE3B*, and *LCE3C*, which demonstrated clear antimicrobial activity against 10 commensal and pathogenic bacteria (Figure 4 and Supplementary Table S2 online). Remarkably, even at sub-micromolar concentrations, activity was observed against a

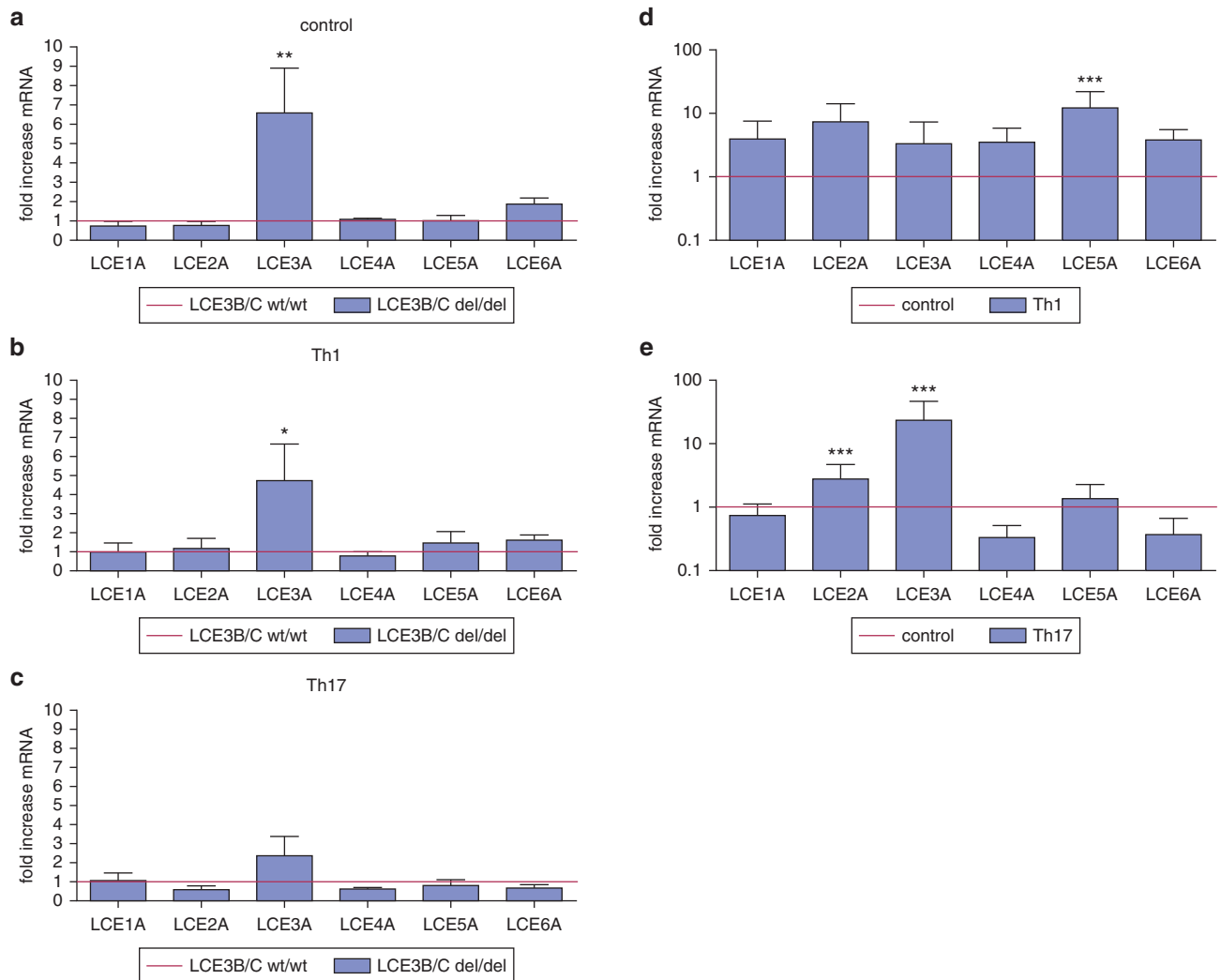


Figure 2. In vitro mRNA analysis. mRNA expression of (a) control, (b) Th1-, and (c) Th17-cytokine stimulated cells (N = 5 per group) in wt/wt and del/del 3D reconstructed epidermis. (d, e) mRNA expression on Th1- and Th17-cytokine stimulation (N = 10). Error bars = standard error of the mean. Red lines = control (wt/wt or unstimulated, set to 1), * $P < 0.05$, ** $P < 0.005$, *** $P < 0.0005$. LCE, late cornified envelope; Th1, T helper type 1; Th17, T helper type 17; wt, wild type.

variety of taxa, including Gram-negative (Figure 4a–d) and Gram-positive (Figure 4e–j) microorganisms, including both aerobic and aerotolerant species. Notably, antimicrobial activity was present under the same experimental (low salt) conditions that reveal the antibacterial activity of human beta-defensin 2, a prototypic cationic, epidermal cysteine-rich AMP (Harder et al., 1997). High salt concentrations inhibited the antimicrobial activity of LCE3 proteins (Supplementary Figure S3a online). LCE3A appeared to be the strongest antimicrobial protein of the tested LCEs, and its potency toward Gram-negative bacteria is similar to the reported potency of human beta-defensin 2 for *Escherichia coli* and *Pseudomonas aeruginosa* (Harder et al., 1997) (Supplementary Figure S3b).

As defensins can exert a toxic effect on mammalian cells as well (Lichtenstein et al., 1986), we tested LCE proteins effects up to 10 μ M on submerged keratinocytes cultures for 4 or 20 hours and did not encounter any effect on cell viability or morphology (Supplementary Figure S4a and b online).

DISCUSSION

LCE expression is largely restricted to skin and oral epithelial tissue, and is absent in cells of the immune system. This indicates that the biological mechanism conferring an increased psoriasis risk is linked to specific epithelial functions of these tissues. Quantitative PCR studies have shown that LCE3 gene expression is low to undetectable in normal skin, but is readily detectable in oral epithelia (Jackson et al., 2005). On skin injury and inflammation, however, LCE3 genes are induced (Bergboer et al., 2011; Jackson et al., 2005) suggesting that LCE3 proteins might be involved in skin barrier function or repair. The reported epistasis between the major risk factor HLA-C*06:02 and LCE3B/C-del (Chandra et al., 2016; de Cid et al., 2009; Huffmeier et al., 2010) supports the idea that an impaired barrier in LCE3B/C-deficient skin would facilitate the penetration of environmental antigens, which in turn could trigger an HLA-C*06:02-restricted immune response (Bergboer et al., 2012). On the basis of this assumption, we performed a detailed analysis of the barrier properties of the del/del and wt/wt

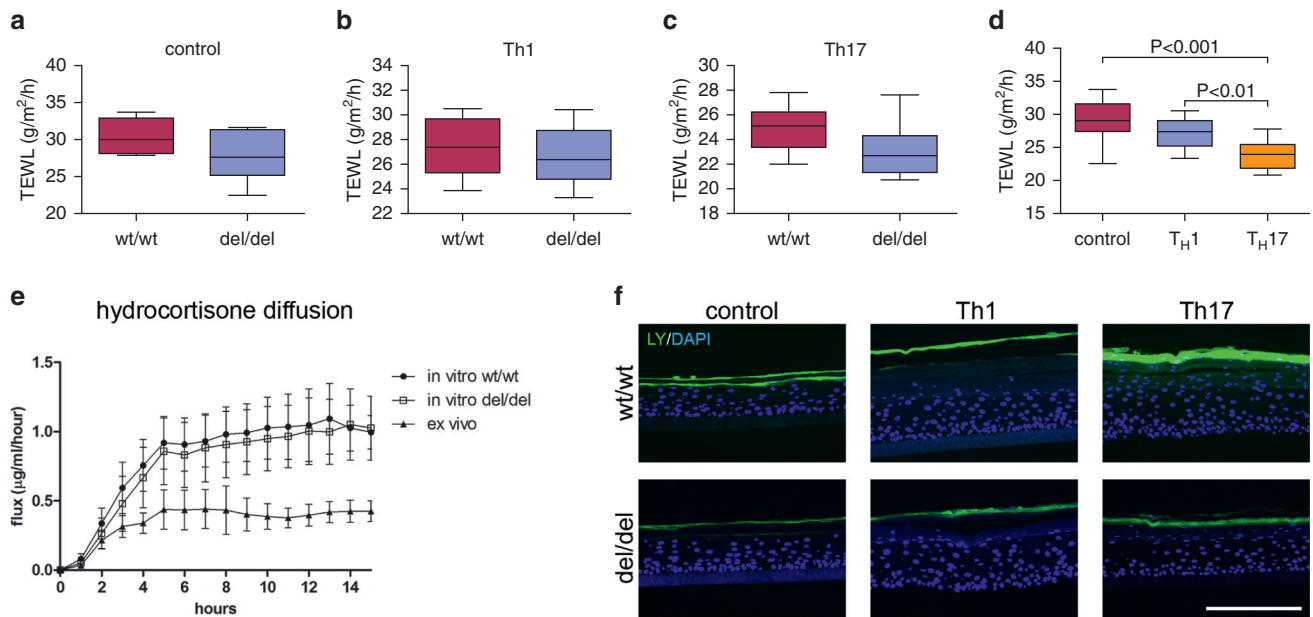


Figure 3. Barrier function of *LCE3B/C* wt/wt and *del/del* 3D reconstructed epidermis. (a–d) TEWL of unstimulated, Th1-, or Th17-stimulated epidermis. Repeated measures ANOVA plus Bonferroni post hoc with $P < 0.05$ significance. (e) Stratum corneum hydrocortisone-diffusion assay. (f) Lucifer yellow (LY) penetration in unstimulated, Th1-, or Th17-cytokine stimulated epidermis. Scale bar = 100 μm . $N = 5$ per genotype group. Error bars = standard error of the mean. ANOVA, analysis of variance; LCE, late cornified envelope; TEWL, transepidermal water loss; Th1, T helper type 1; Th17, T helper type 17; wt, wild type.

genotypes. However, for the molecules studied here, our in vitro models did not reveal an impairment of outside-in and inside-out barrier function in *LCE3B/C-del* epidermis. As the LCE3 baseline expression levels are higher in stratified oral epithelia (tonsil, gingiva, pharynx) than in normal skin (Niehues et al., 2016), we cannot exclude the possibility that the impact of LCE3B/C-loss could lead to leaky oral epithelia that are prone to penetration of external antigens. The observation that many psoriasis patients have their first flare after streptococcal tonsillitis (McFadden et al., 2009; Valdimarsson et al., 2009) would be compatible with the oral cavity as the site of entry of bacterial antigens. This potential mechanism clearly warrants further investigation.

An alternative explanation for increased penetration of external antigens in LCE3B/C-deficient epidermis would point to a more direct antimicrobial role of these LCE proteins. Mammalian epidermis is known for its antimicrobial shield of keratinocyte-expressed AMPs (Harder et al., 2013). We found a rather broad defensin-like spectrum of antibacterial activity that includes Gram-positive and Gram-negative species, and anaerobic as well as aerotolerant organisms. In view of their high homology, other LCE members may have antimicrobial properties as well. It will be interesting to determine whether this activity extends to other organisms such as yeasts and fungi.

LCE3 proteins are small (9–10 kDa), cationic proteins (isoelectric points approximately 9.0), and their antimicrobial activity is inhibited at high ionic strength. LCE3 proteins share these properties with many previously described AMPs such as human beta defensin-1, human beta defensin-2, human alpha-defensin-1, secretory leukocyte protease inhibitor, and LL37. All these proteins lose antimicrobial activity in aqueous solutions of physiological ionic strength, which raises the question whether the observed in vitro activity has any relevance under physiological conditions. It has been argued

that in vitro assays poorly capture the physiological conditions in which these proteins work in vivo, such as SC of the skin, or mucous surfaces of the oral cavity or respiratory system. Epidermis-expressed LCE proteins or peptides derived thereof will end up in the SC, which is composed of lipids and crosslinked proteins, and devoid of free water. The (bound) water content of SC is extremely variable (Thakoersing et al., 2013), and to our knowledge, the ionic composition and concentration of the SC is unknown. The antimicrobial activity of AMPs is obviously concentration dependent, and so is their salt sensitivity. Although AMPs are typically tested in the low micromolar range, their actual concentration in vivo may be orders of magnitude higher. We have modeled the epidermal concentration of human beta-defensin 2 using an in vitro reconstructed skin model, which suggested that a concentration of 300 μM is reached (Jansen et al., 2009), which is far higher than required for antimicrobial activity, and which may offset the effect of high ionic strength. For all these reasons, the in vitro antimicrobial assay conditions are quite distinct from the environment in which AMPs such as LCE and defensins operate, and in vitro models to test AMPs under these tissue-specific conditions are currently lacking. Indirect evidence that these molecules are genuine antimicrobial agents in vivo is provided by the observation that mice in which these genes have been knocked out have a compromised innate immune system (Moser et al., 2002).

A variety of AMP mechanisms that mediate bacterial killing or toxin inactivation have been described, including membrane permeabilization and depolarization (Selsted and Ouellette, 2005), peptide nanonets (Chu et al., 2012), and local protein unfolding (Kudryashova et al., 2014). LCE3 proteins cause a rapid killing that is reminiscent of the kinetics of killing by human neutrophil defensins where the

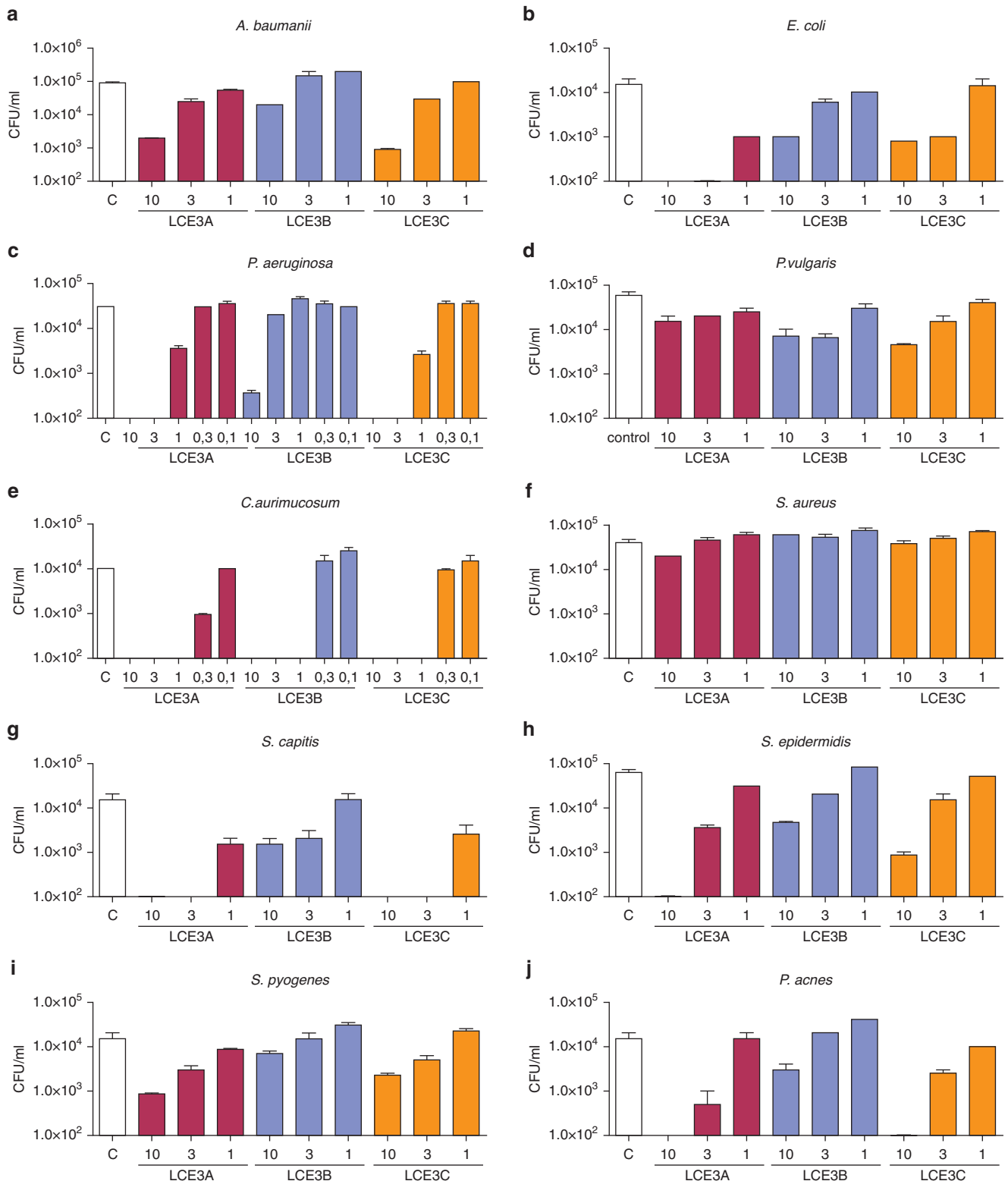


Figure 4. Antimicrobial activity of LCE3 proteins. LCE3A, B, C were incubated with Gram-negative (a–d) and Gram-positive commensal and pathogenic bacteria (e–j) between 0.1 to 10 μM protein. For specifications see [Supplementary Table S4](#). 2 × 10² CFU/ml is the detection limit; therefore values < 2 × 10² CFU/ml are not depicted. Error bars = standard error of the mean. CFU, colony forming units; LCE, late cornified envelope.

outer and inner membrane of *E. coli* are sequentially permeabilized within 30–60 minutes (Lehrer et al., 1989). Further analysis is needed to better understand the mechanism of bacterial killing and its relevance in the antimicrobial shield of the epidermis.

How can we integrate these findings into a comprehensive picture of the pathogenesis of psoriasis? From an evolutionary perspective, the LCE3B/C indel is likely a derived rather than an ancestral allele, as the deletion has not been reported in non-human primate genomes. In addition, the frequency of

the indel is only 37% in African populations, but it is between 62 and 64% in East-Asian, South-Asian, American, and European populations (Bassaganyas et al., 2013; 1000 Genomes Project Consortium et al., 2010). This may possibly indicate a selective advantage in out-of-Africa populations. In view of the antimicrobial activity of LCE3 proteins, the deletion could cause a different antimicrobial shield in the epidermis. In *wt/wt* individuals (AA genotype), *LCE3A* is not expressed in normal skin, and also the expression levels of *LCE3B/C* are also very low or absent. *LCE3B/C-del* thus causes the *LCE3A* gene to be expressed at significant levels in the normal skin of these individuals (Figure 1b). The loss of *LCE3B/C* would not have a noticeable effect in normal skin, as they were not expressed anyway. The net result of the indel would be a quantitatively (and possibly qualitatively) different epidermal host defense repertoire. Speculatively, this could provide an evolutionary benefit and hence favor the spread of *LCE3B/C-del*. An increased risk to develop psoriasis could be regarded as the evolutionary cost of having this stronger antimicrobial shield in the epidermis and oral cavity.

As there is an epistatic interaction with *HLA*C06:02* (Tsoi et al., 2012), *LCE3B/C-del* could alter the self-peptide profile of the skin by altering the balance of *LCE3A* self-peptides, compared with *LCE3B* and *LCE3C*. It could also alter the cutaneous microbiome in such a way as to promote the survival and colonization of taxa that elicit an *HLA*C06:02*-restricted response. A precedent comes from a recent microbiome study showing that filaggrin deficiency in ichthyosis vulgaris patients causes marked changes in the bacterial species composition (Zeeuwen et al., 2016). Microbiome studies on psoriasis have been performed, and shifts in microbiome composition have been reported, but unfortunately none of these studies have included the host *HLA*C06:02* and *LCE3B/C-del* genotypes. In addition to psoriasis, the *LCE3B/C-del* has been associated with different other diseases, including lupus (Lu et al., 2011) and rheumatoid arthritis (Docampo et al., 2010); our findings will provide further insights for the causal mechanism of this locus to the associated autoimmune disorders. Clearly, future studies should aim to establish the effects of *LCE3B/C-del* on the tissue microbiome, and their potential effects on *HLA*C06:02*-dependent immune processes that lead to disease.

In conclusion, our study establishes two findings regarding functional genomics of the psoriasis risk factor *LCE3B/C-del*. First, we show that *LCE3B/C-del*, a risk allele for psoriasis, is significantly associated with the elevated expression of the upstream *LCE3A* gene in human skin. Secondly, we have uncovered a hitherto unknown antibacterial function of the proteins encoded by these three genes of the *LCE3* family. Overall, these findings suggest a central role for *LCE3A* in epidermal host defense and *LCE3B/C-del*-mediated psoriasis risk.

MATERIALS AND METHODS

Quantitative trait loci analysis of skin biopsies

All subjects involved in this study provided written informed consent according to the Helsinki Guidelines and approved by the Institutional Review Board of the University of Michigan Medical School.

To evaluate the associations between the *LCE3B/C-del* and expression traits in the EDC region (between 151.5 and 154 Mb of chromosome 1), we utilized our RNA-seq cohort for psoriasis (Tsoi, 2014; Tsoi et al., 2015a) to measure the gene expression levels in NN, PN, and PP skin samples, respectively. Most of the samples in the RNA-seq cohort were genotyped in our Exomechip cohort. Altogether 80 nonpsoriatic controls and 92 psoriatic patients with both genetic and expression data were included, with 27 of the patients also providing expression data for PN skin. The samples and data processing procedures for the RNA-seq data were described previously (Li et al., 2014; Tsoi et al., 2015a). Briefly, we employed Tophat and Cufflink to align reads and estimate expression levels, respectively. We included in the expression quantitative trait loci analysis only genes in the EDC region (chromosome 1: 151.5–154 Mb) that were expressed in at least 20% of the samples in the condition being studied (i.e., NN, PN, or PP skin). For each expression trait, we removed expression outliers (i.e., three times the interquartile range smaller than the lower quartile or three times the interquartile range larger than the upper quartile), and we further performed inverse normal transformation on each gene's expression values. Genetic marker rs4112788 has been reported to be a close proxy of *LCE3B/C-del* (de Cid et al., 2009), and it was genotyped in the Exomechip cohort; therefore, we used this single nucleotide polymorphism as a surrogate for the deletion and correlated its genotypes with expression traits using a linear model. The expression quantitative trait loci analysis was performed for NN, PN, and PP skin separately.

LCE3B/C-del genotyping of keratinocytes used for in vitro analyses

All subjects involved in this study were healthy (no skin diseases) and provided written informed consent according to the Helsinki Guidelines and approved by the local Medical Ethics Committee in The Netherlands (CMO Regio Arnhem-Nijmegen, The Netherlands). Keratinocytes were isolated and genotyped for their *LCE3B/C-del* status as previously described (de Cid et al., 2009). The nondeletion allele (i.e., containing *LCE3B* and *3C*) is designated as *wt*. The deletion allele is designated *del*. Genotypes are referred to as *wt/wt*, *del/wt*, and *del/del*.

3D reconstructed epidermis

3D reconstructed epidermis was generated as described previously (Niehues et al., 2017). To model the response of Th1 or Th17 T cells, combinations of cytokines were added into the medium during days 5–8 of the air-liquid interface culture (Th1 mix: 10 ng/ml IL-1 α , 0.5 ng/ml tumor necrosis factor-1 α , 250 U/ml IFN- γ ; Th17 mix: 50 ng/ml IL-17, 50 ng/ml IL-22; Preprotech, Rocky Hill, NJ).

Quantitative real-time PCR

RNA isolation, cDNA synthesis, quantitative PCR analysis, and primer design were performed as described previously (Bergboer et al., 2011; Zeeuwen et al., 2008) (Supplementary Table S3 online). Target gene expression was normalized to the expression of the housekeeping gene human acidic ribosomal phosphoprotein P0 (*RPLP0*). The $\Delta\Delta C_t$ method was used to calculate relative mRNA expression levels (Livak and Schmittgen, 2001).

Statistics

Statistical analysis of quantitative PCR data was performed on ΔC_t values using commercially available software (IBM, SPSS Statistics 22). Repeated measures analysis of variance, followed by Bonferroni

post hoc testing, was performed. $P < 0.05$ was considered statistically significant.

Immunohistochemistry

3D reconstructed epidermis was formalin-fixed and processed for routine histology. Paraffin sections (6 μm) were stained with antibodies using an indirect immunoperoxidase (Vectastain, Vector Laboratories, Burlingame, CA) or immunofluorescence technique. Details of antibodies are presented in [Supplementary Table S4](#) online.

Transepidermal water loss measurement

Transepidermal water loss was determined according to the condenser-chamber method (Aquaflux AF200, Biox Systems, London, UK), as described before ([Niehues et al., 2017](#)).

In vitro outside-in dye penetration

Lucifer yellow (1 mM) (Sigma Aldrich) was added to the upper chambers of 3D reconstructed epidermis in 12-well dishes for 1 hour. Immunohistological sections were counterstained with DAPI (Boehringer Mannheim) and assessed with fluorescence microscopy for Lucifer yellow penetration. Validation of this model is described in ([Niehues et al. 2017](#)).

Hydrocortisone diffusion analysis

SC isolation was performed according to the procedure as described earlier ([van Smeden et al., 2011](#); [Nugroho et al., 2006](#)). In short, SC was isolated from ex vivo skin or 3D epidermal equivalents and used in the diffusion setup as described previously ([Mojumdar et al., 2014](#)) using 0.34 mg/ml hydrocortisone in acetate buffer (pH 5.0) as diffusion fluid with 2–2.5 ml/h flow speed. Samples were collected for a period of 15 hours, with a sampling time of 60 minutes. Hydrocortisone content was analyzed by ultra performance liquid chromatography (Acquity UPLC-UV system, Milford, MA) at 243 nm and analysis was performed using Masslynx v4.1 for peak integration, calculation of the concentration, and flux determination, which is represented as flux in $\mu\text{g}/\text{cm}^2/\text{h}$.

Expression and synthesis of LCE proteins

The cloning of LCE genes has been described previously ([Niehues et al., 2016](#)). LCE fusion proteins of glutathione S-transferase were produced according to standard procedures ([Frangioni and Neel, 1993](#)). Fusion-proteins were thrombin-cleaved to liberate the LCE protein from glutathione S-transferase. LCE3B-glutathione S-transferase fusion protein did not show any antibacterial activity, but after glutathione S-transferase removal, the LCE protein clearly displayed antimicrobial activity. As pure LCE proteins were difficult to obtain, most likely due to their extremely high cysteine content, LCE3A,B,C proteins were synthesized by solid phase peptide synthesis, purified to 85–90% purity by reverse-phase HPLC and characterized by electrospray mass spectroscopy (Pepmic, Suzhou, China). LCE proteins were delivered in a reduced form. Reducing agents and other low molecular weight components were removed by spin column dialysis (Amicon Ultra Centrifugal Filters 3K, Merck Millipore, Billerica, MA), and LCE proteins were extensively dialyzed against 10 mM sodium phosphate buffer (pH 7.4).

Bacteria culture

Diverse bacterial strains were grown on Columbia agar with 5% sheep blood (Becton, Dickinson), and single colonies were used to inoculate cultures in brain heart infusion medium (Mediatech, BV, Groningen, The Netherlands) overnight at 37 °C. Bacterial cultures were diluted 10^2 times in brain-heart infusion medium and

allowed to grow for another 2.5 hours to reach exponential growth (except for *Propionibacterium acnes*). For strains and specifications of all bacterial strains, see [Supplementary Table S2](#).

Antimicrobial assay

Bacteria were harvested from exponential growth cultures by centrifugation (2,100g, 5 minutes), washed with sodium phosphate buffer, and resuspended in sodium phosphate buffer at a concentration of 10^4 – 10^5 colony forming units/ml. Bacterial suspensions were exposed to LCE peptides in an assay volume of 100 μl , for 2 hours at 37 °C in a 96-well microplate (Greiner Bio-one, Kremsmünster, Austria). The suspensions were serially diluted in steps of 10, and 10 μl of each dilution was plated on 5% sheep blood containing Columbia agar plates overnight at 37 °C. Antimicrobial effects were determined by counting colony forming units.

ORCID

James T. Elder: <http://orcid.org/0000-0003-4215-3294>

CONFLICT OF INTEREST

The authors state no conflict of interest.

ACKNOWLEDGMENTS

We thank Heiman Wertheim (Department of Medical Microbiology, Radboudumc) for providing us with the bacterial strains used in this study. This research was funded by a TOP grant (91211052) of the Netherlands Organization for Health Research and Development (ZonMw) awarded to JS and PLJMZ, and by a personal grant (to PLJMZ) from the National Psoriasis Foundation/USA. Furthermore, this study was supported by NIH R01 grants AR042742, AR050511, AR054966, AR062382, and AR065183 to JTE. JTE is supported by the Ann Arbor Veterans Affairs Hospital. He is also supported by the Dawn and Dudley Holmes Memorial Fund and the Babcock Endowment Fund to the Department of Dermatology at the University of Michigan.

SUPPLEMENTARY MATERIAL

Supplementary material is linked to the online version of the paper at www.jidonline.org, and at <http://dx.doi.org/10.1016/j.jid.2017.06.003>.

REFERENCES

- Bassaganyas L, Riveira-Munoz E, Garcia-Aragones M, Gonzalez JR, Caceres M, Armengol L, et al. Worldwide population distribution of the common LCE3C-LCE3B deletion associated with psoriasis and other autoimmune disorders. *BMC Genomics* 2013;14:261.
- Bergboer JG, Tjabringa GS, Kamsteeg M, van Vlijmen-Willems IM, Rodijk-Olthuis D, Jansen PA, et al. Psoriasis risk genes of the late cornified envelope-3 group are distinctly expressed compared with genes of other LCE groups. *Am J Pathol* 2011;178:1470–7.
- Bergboer JG, Zeeuwen PL, Schalkwijk J. Genetics of psoriasis: evidence for epistatic interaction between skin barrier abnormalities and immune deviation. *J Invest Dermatol* 2012;132:2320–31.
- Candi E, Schmidt R, Melino G. The cornified envelope: a model of cell death in the skin. *Nat Rev Mol Cell Biol* 2005;6:328–40.
- Capon F, Semprini S, Chimenti S, Fabrizi G, Zambruno G, Murgia S, et al. Fine mapping of the PSORS4 psoriasis susceptibility region on chromosome 1q21. *J Invest Dermatol* 2001;116:728–30.
- Chandra A, Lahiri A, Senapati S, Basu B, Ghosh S, Mukhopadhyay I, et al. Increased risk of psoriasis due to combined effect of HLA-Cw6 and LCE3 risk alleles in Indian population. *Sci Rep* 2016;6:24059.
- Chu H, Pazgier M, Jung G, Nuccio SP, Castillo PA, de Jong MF, et al. Human alpha-defensin 6 promotes mucosal innate immunity through self-assembled peptide nanonets. *Science* 2012;337:477–81.
- de Cid R, Riveira-Munoz E, Zeeuwen PL, Robarge J, Liao W, Dannhauser EN, et al. Deletion of the late cornified envelope LCE3B and LCE3C genes as a susceptibility factor for psoriasis. *Nat Genet* 2009;41:211–5.
- de Guzman Strong C, Conlan S, Deming CB, Cheng J, Sears KE, Segre JA. A milieu of regulatory elements in the epidermal differentiation complex syntenic block: implications for atopic dermatitis and psoriasis. *Hum Mol Genet* 2010;19:1453–60.

- Docampo E, Rabionet R, Riveira-Munoz E, Escaramis G, Julia A, Marsal S, et al. Deletion of the late cornified envelope genes, LCE3C and LCE3B, is associated with rheumatoid arthritis. *Arthritis Rheum* 2010;62:1246–51.
- Frangioni JV, Neel BG. Solubilization and purification of enzymatically active glutathione S-transferase (pGEX) fusion proteins. *Anal Biochem* 1993;210:179–87.
- Gallo RL, Hooper LV. Epithelial antimicrobial defence of the skin and intestine. *Nat Rev Immunol* 2012;12:503–16.
- Genetic Analysis of Psoriasis Consortium & the Wellcome Trust Case Control Consortium 2, Strange A, Capon F, Spencer CC, Knight J, Weale ME, Allen MH, et al. A genome-wide association study identifies new psoriasis susceptibility loci and an interaction between HLA-C and ERAP1. *Nat Genet* 2010;42:985–90.
- 1000 Genomes Project Consortium, Abecasis GR, Altshuler D, Auton A, Brooks LD, Durbin RM, Gibbs RA, et al. A map of human genome variation from population-scale sequencing. *Nature* 2010;467:1061–73.
- Harder J, Bartels J, Christophers E, Schroder JM. A peptide antibiotic from human skin. *Nature* 1997;387:861.
- Harder J, Schroder JM, Glaser R. The skin surface as antimicrobial barrier: present concepts and future outlooks. *Exp Dermatol* 2013;22:1–5.
- Hollox EJ, Huffmeier U, Zeeuwen PL, Palla R, Lascorz J, Rodijk-Olthuis D, et al. Psoriasis is associated with increased beta-defensin genomic copy number. *Nat Genet* 2008;40:23–5.
- Huffmeier U, Bergboer JG, Becker T, Armour JA, Traupe H, Estivill X, et al. Replication of LCE3C-LCE3B CNV as a risk factor for psoriasis and analysis of interaction with other genetic risk factors. *J Invest Dermatol* 2010;130:979–84.
- Jackson B, Tilli CM, Hardman MJ, Avilion AA, MacLeod MC, Ashcroft GS, et al. Late cornified envelope family in differentiating epithelia—response to calcium and ultraviolet irradiation. *J Invest Dermatol* 2005;124:1062–70.
- Jansen PA, Rodijk-Olthuis D, Hollox EJ, Kamsteeg M, Tjabringa GS, de Jongh GJ, et al. Beta-defensin-2 protein is a serum biomarker for disease activity in psoriasis and reaches biologically relevant concentrations in lesional skin. *PLoS One* 2009;4:e4725.
- Johnston A, Xing X, Swindell WR, Kochkodan J, Riblett M, Nair RP, et al. Susceptibility-associated genetic variation at IL12B enhances Th1 polarization in psoriasis. *Hum Mol Genet* 2013;22:1807–15.
- Jordan CT, Cao L, Roberson ED, Pierson KC, Yang CF, Joyce CE, et al. PSORS2 is due to mutations in CARD14. *Am J Hum Genet* 2012;90:784–95.
- Kudryashova E, Quintyn R, Seveau S, Lu W, Wysocki VH, Kudryashov DS. Human defensins facilitate local unfolding of thermodynamically unstable regions of bacterial protein toxins. *Immunity* 2014;41:709–21.
- Lehrer RI, Barton A, Daher KA, Harwig SS, Ganz T, Selsted ME. Interaction of human defensins with *Escherichia coli*. Mechanism of bactericidal activity. *J Clin Invest* 1989;84:553–61.
- Li B, Tsoi LC, Swindell WR, Gudjonsson JE, Tejasvi T, Johnston A, et al. Transcriptome analysis of psoriasis in a large case-control sample: RNA-seq provides insights into disease mechanisms. *J Invest Dermatol* 2014;134:1828–38.
- Lichtenstein A, Ganz T, Selsted ME, Lehrer RI. In vitro tumor cell cytotoxicity mediated by peptide defensins of human and rabbit granulocytes. *Blood* 1986;68:1407–10.
- Livak KJ, Schmittgen TD. Analysis of relative gene expression data using real-time quantitative PCR and the 2(-Delta Delta C(T)) method. *Methods* 2001;25:402–8.
- Lowes MA, Suarez-Farinas M, Krueger JG. Immunology of psoriasis. *Annu Rev Immunol* 2014;32:227–55.
- Lu X, Guo J, Zhou X, Li R, Liu X, Zhao Y, et al. Deletion of LCE3C-LCE3B is associated with rheumatoid arthritis and systemic lupus erythematosus in the Chinese Han population. *Ann Rheum Dis* 2011;70:1648–51.
- McFadden JP, Baker BS, Powles AV, Fry L. Psoriasis and streptococci: the natural selection of psoriasis revisited. *Br J Dermatol* 2009;160:929–37.
- Mojumdar EH, Helder RW, Gooris GS, Bouwstra JA. Monounsaturated fatty acids reduce the barrier of stratum corneum lipid membranes by enhancing the formation of a hexagonal lateral packing. *Langmuir* 2014;30:6534–43.
- Moser C, Weiner DJ, Lysenko E, Bals R, Weiser JN, Wilson JM. beta-Defensin 1 contributes to pulmonary innate immunity in mice. *Infect Immun* 2002;70:3068–72.
- Nair RP, Duffin KC, Helms C, Ding J, Stuart PE, Goldgar D, et al. Genome-wide scan reveals association of psoriasis with IL-23 and NF-kappaB pathways. *Nat Genet* 2009;41:199–204.
- Nestle FO, Kaplan DH, Barker J. Psoriasis. *N Engl J Med* 2009;361:496–509.
- Niehues H, Schalkwijk J, van Vlijmen-Willems IMJ, Rodijk-Olthuis D, van Rossum MM, Wladykowski E, et al. Epidermal equivalents of filaggrin null keratinocytes do not show impaired skin barrier function. *J Allergy Clin Immunol* 2017;139:1979–81.
- Niehues H, van Vlijmen-Willems IM, Bergboer JG, Kersten FF, Narita M, Hendriks WJ, et al. Late cornified envelope (LCE) proteins: distinct expression patterns of LCE2 and LCE3 members suggest non redundant roles in human epidermis and other epithelia. *Br J Dermatol* 2016;174:795–802.
- Nugroho AK, Romeijn SG, Zwier R, de Vries JB, Dijkstra D, Wikström H, et al. Pharmacokinetics and Pharmacodynamics Analysis of Transdermal Iontophoresis of 5-OH-DPAT in Rats: In vitro–in vivo Correlation. *J Pharm Sci* 2006;95:1570–85.
- Schroder JM, Harder J. Antimicrobial skin peptides and proteins. *Cell Mol Life Sci* 2006;63:469–86.
- Selsted ME, Ouellette AJ. Mammalian defensins in the antimicrobial immune response. *Nat Immunol* 2005;6:551–7.
- Tejasvi T, Stuart PE, Chandran V, Voorhees JJ, Gladman DD, Rahman P, et al. TNFAIP3 gene polymorphisms are associated with response to TNF blockade in psoriasis. *J Invest Dermatol* 2012;132:593–600.
- Thakoersing VS, van Smeden J, Mulder AA, Vreeken RJ, El Ghalbzouri A, Bouwstra JA. Increased presence of monounsaturated fatty acids in the stratum corneum of human skin equivalents. *J Invest Dermatol* 2013;133:59–67.
- Tsoi LC. Transcriptomic studies to characterize the gene expression landscape of psoriasis (GEO dataset GSE63980), 2014.
- Tsoi LC, Iyer MK, Stuart PE, Swindell WR, Gudjonsson JE, Tejasvi T, et al. Analysis of long non-coding RNAs highlights tissue-specific expression patterns and epigenetic profiles in normal and psoriatic skin. *Genome Biol* 2015a;16:24.
- Tsoi LC, Spain SL, Ellinghaus E, Stuart PE, Capon F, Knight J, et al. Enhanced meta-analysis and replication studies identify five new psoriasis susceptibility loci. *Nat Commun* 2015b;6:7001.
- Tsoi LC, Spain SL, Knight J, Ellinghaus E, Stuart PE, Capon F, et al. Identification of 15 new psoriasis susceptibility loci highlights the role of innate immunity. *Nat Genet* 2012;44:1341–8.
- Valdimarsson H, Thorleifsdottir RH, Sigurdardottir SL, Gudjonsson JE, Johnston A. Psoriasis—as an autoimmune disease caused by molecular mimicry. *Trends Immunol* 2009;30:494–501.
- van Smeden J, Hoppel L, van der Heijden R, Hankemeier T, Vreeken RJ, Bouwstra JA. LC/MS analysis of stratum corneum lipids: ceramide profiling and discovery. *J Lipid Res* 2011;52:1211–21.
- Zeeuwen PL, de Jongh GJ, Rodijk-Olthuis D, Kamsteeg M, Verhoosel RM, van Rossum MM, et al. Genetically programmed differences in epidermal host defense between psoriasis and atopic dermatitis patients. *PLoS One* 2008;3:e2301.
- Zeeuwen PL, Ederveen TH, van der Krieken DA, Niehues H, Boekhorst J, Kezic S, et al. Gram-positive anaerobe cocci are underrepresented in the microbiome of filaggrin-deficient human skin. *J Allergy Clin Immunol* 2017;139:1368–71.
- Zuo X, Sun L, Yin X, Gao J, Sheng Y, Xu J, et al. Whole-exome SNP array identifies 15 new susceptibility loci for psoriasis. *Nat Commun* 2015;6:6793.



This work is licensed under a Creative Commons Attribution-NonCommercial-NoDerivatives 4.0 International License. To view a copy of this license, visit <http://creativecommons.org/licenses/by-nc-nd/4.0/>