



Universiteit
Leiden
The Netherlands

Targeting and exploiting cytomegalovirus for vaccine development

Panagioti, E.

Citation

Panagioti, E. (2017, December 5). *Targeting and exploiting cytomegalovirus for vaccine development*. Retrieved from <https://hdl.handle.net/1887/59474>

Version: Not Applicable (or Unknown)

License: [Licence agreement concerning inclusion of doctoral thesis in the Institutional Repository of the University of Leiden](#)

Downloaded from: <https://hdl.handle.net/1887/59474>

Note: To cite this publication please use the final published version (if applicable).

Cover Page



Universiteit Leiden



The following handle holds various files of this Leiden University dissertation:
<http://hdl.handle.net/1887/59474>

Author: Panagioti, E.

Title: Targeting and exploiting cytomegalovirus for vaccine development

Issue Date: 2017-12-05

Chapter 3

Enforced OX40 stimulation empowers booster vaccines to induce effective CD4⁺ and CD8⁺ T cell responses against mouse cytomegalovirus infection

Eleni Panagioti¹, Louis Boon², Ramon Arens³, Sjoerd H. van der Burg^{1,*}

¹Department of Medical Oncology, Leiden University Medical Center, Leiden, The Netherlands;

²Bioceros, Utrecht, The Netherlands and ³Department of Immunohematology and Blood Transfusion, Leiden University Medical Center, Leiden, The Netherlands.

Front Immunol. 2017 Feb 20;8:144.

ABSTRACT

There is an imperative need for effective preventive vaccines against human cytomegalovirus (HCMV) as it poses a significant threat to the immunologically immature, causing congenital disease, and to the immune compromised including transplant recipients. In this study we examined the efficacy of synthetic long peptides (SLPs) as a CD4⁺ and CD8⁺ T cell-eliciting preventive vaccine approach against mouse CMV (MCMV) infection. In addition, the use of agonistic OX40 antibodies to enhance vaccine efficacy was explored. Immunocompetent C57BL/6 mice were vaccinated in a prime-boost vaccination regiment with SLPs comprising various MHC class I and II-restricted peptide epitopes of MCMV-encoded antigens. Enforced OX40 stimulation resulted in superior MCMV-specific CD4⁺ as CD8⁺ T cell responses when applied during booster SLP vaccination. Vaccination with a mixture of SLPs containing MHC class II epitopes and OX40 agonistic antibodies resulted in a moderate reduction of the viral titers after challenge with lytic MCMV infection. Markedly, the combination of SLP vaccines containing both MHC class I and II epitopes plus OX40 activation during booster vaccination resulted in polyfunctional (i.e., IFN- γ ⁺, TNF⁺, IL-2⁺) CD4⁺ and CD8⁺ T cell responses that were even higher in magnitude when compared to those induced by the virus, and this resulted in the best containment of virus dissemination. Our results show that the induction of strong T cell responses can be a fundamental component in the design of vaccines against persistent viral infections.

INTRODUCTION

It is estimated that 60-80% of people worldwide are infected by the prototypic β -herpesvirus human cytomegalovirus (HCMV). CMV establishes low level viral persistence within immunocompetent hosts without clinical symptoms. However, it can cause life-threatening disease in the immunological immature (unborn babies and newborns) and immunocompromised individuals (e.g. bone marrow and organ transplant recipients) [1,2]. Although new antiviral drugs against CMV are in clinical development, the most commonly used agents display toxicity. Importantly, no licensed prophylactic or therapeutic vaccines exist for CMV at present. Consequently, there is an imperative need to identify potent vaccine modalities to prevent HCMV infection [3-5].

CD4⁺ and CD8⁺ T cell responses play a critical role in controlling CMV infection in both mouse and human. While CD4⁺ T cells seem to be more crucial in the early phase after infection, CD8⁺ T cells are imperative during latency and harbor superior protective properties upon re-challenge [6-9]. Moreover, adoptive transfer approaches established the pivotal role of CMV-specific CD4⁺ and CD8⁺ T cells in orchestrating virus replication control [10-12]. During CMV infection, CD4⁺ and CD8⁺ T cell responses either follow the traditional course comprised by massive expansion followed by rapid contraction and maintenance at low levels or instead do not undergo contraction but remain at high frequency or even expand gradually. The latter has been described as memory T cell inflation, and has been observed for a restricted set of immunodominant CMV antigens [13-16]. Memory inflation is thought to occur due to low-level persistent antigenic priming and requires certain costimulatory receptor-ligand pairs of which CD27-CD70 and OX40-OX40L interactions are important [17,18]. Phenotypically inflationary T cells exhibit effector-like properties without signs of exhaustion [14,16,19]. The comparable nature of the T cell response to MCMV and HCMV is also found for B cell and NK cell responses, and is likely related to the similarities of both viruses in tropism, pathology and the establishment of latent infection that reactivates upon immunosuppression [20,21].

Recently, we demonstrated that synthetic long peptide (SLP) vaccines, designed to exclusively induce MHC class I-restricted CD8⁺ T cells, were able to elicit robust and polyfunctional T cell responses that led to reduced MCMV replication in C57BL/6 and BALB/c mouse strains after challenge [22]. However, live MCMV vaccines were more efficient which prompted us to further improve the SLP vaccine efficacy. Since CD4⁺ helper T cells promote long-term maintenance of memory CD8⁺ T cells, also during MCMV infection [23,24], and display direct anti-viral capabilities [12,25], the induction of CD4⁺ T cells may improve the efficacy of the SLP vaccine. Here we analyzed the potency of SLP vaccines inducing MCMV-specific CD4⁺ T cells, either alone or in conjunction with SLPs eliciting MCMV-specific CD8⁺ T cells. Enforced OX40 signaling was used to enhance the expansion of both CD4⁺ and CD8⁺ T cell subsets. We show that combined

administration of SLPs eliciting CD4⁺ and CD8⁺ T cells and OX40 stimulation during booster vaccination leads to a startling increase of both the T cell magnitude and polyfunctionality, ultimately leading to efficient control of lytic MCMV infection.

RESULTS

Prime/boost vaccination with SLPs inducing MCMV-specific CD4⁺ T cell responses

MHC class II epitopes from MCMV encoded proteins have previously been identified by us in the C57BL/6 mouse strain (MHC haplotype H-2^b) [11], and five immunogenic epitopes (i.e., m18₈₇₂₋₈₈₆, M25₄₀₉₋₄₂₃, m139₅₆₀₋₅₇₄, m142₂₄₋₃₈ and m09₁₃₃₋₁₄₇) were selected for the SLP vaccine platform (Table 1 in Supplementary Material). Initially, the potential of single SLP-based vaccines in eliciting CD4⁺ T cell responses was assessed in a prime/boost vaccination setting (2 weeks apart) with the TLR9 ligand CpG as adjuvant. At day 8 after the first SLP vaccination, CD4⁺ T cell responses were not detected by polychromatic intracellular cytokine staining (data not shown) but they became detectable in the spleen at day 8 after the booster SLP vaccination (Figure 1A). However, these responses were relatively low when compared to SLP-induced CD8⁺ T cell responses [22]. Analysis of the cytokine profile revealed the presence of single IFN- γ , double IFN- γ /TNF and triple IFN- γ /TNF/IL-2 cytokine producing CD4⁺ T cell populations (Figure 1B).

For clinical applications multiple SLPs need to be combined in order to deal with MHC heterogeneity. Moreover, the breadth of SLP vaccines is important for the efficacy [22]. Hence, mice were vaccinated with a mixture of the 5 SLPs and the CD4⁺ T cell response for each individual peptide epitope was measured. CD4⁺ T cell reactivity to all MHC class II epitopes was detected (Figure 1C), albeit that the response to each individual peptide was lower when compared to single SLP vaccination, suggesting that competition among CD4⁺ T cell peptide epitopes occurs in multivalent vaccines. Moreover, in comparison to the CD4⁺ T cell response observed after MCMV infection, vaccination with a mixture of MHC class II SLPs resulted in lower numbers of MCMV-specific T cells (Figure 1C). Nevertheless, the cytokine polyfunctionality of the SLP-elicited CD4⁺ T cells was augmented compared to MCMV-induced CD4⁺ T cells (Figure 1D). Taken together, these results show that prime/boost vaccination with a mixture of MHC class II epitope-containing SLPs elicits polyfunctional MCMV-specific CD4⁺ T cell responses, but in magnitude these are lower as compared to those induced by the virus itself.

Enforced OX40 triggering during booster vaccination shows superior induction of SLP-elicited CD4⁺ T cell responses

Next, we attempted to augment the magnitude of the SLP-induced CD4⁺ T cell responses. As OX40-mediated signals are important for enhancing CD4⁺ T cell expansion and survival [26], we decided to use an agonistic OX40 antibody that provides *in vivo* OX40 stimulation. First, we investigated the scheduling of the agonistic OX40 antibody

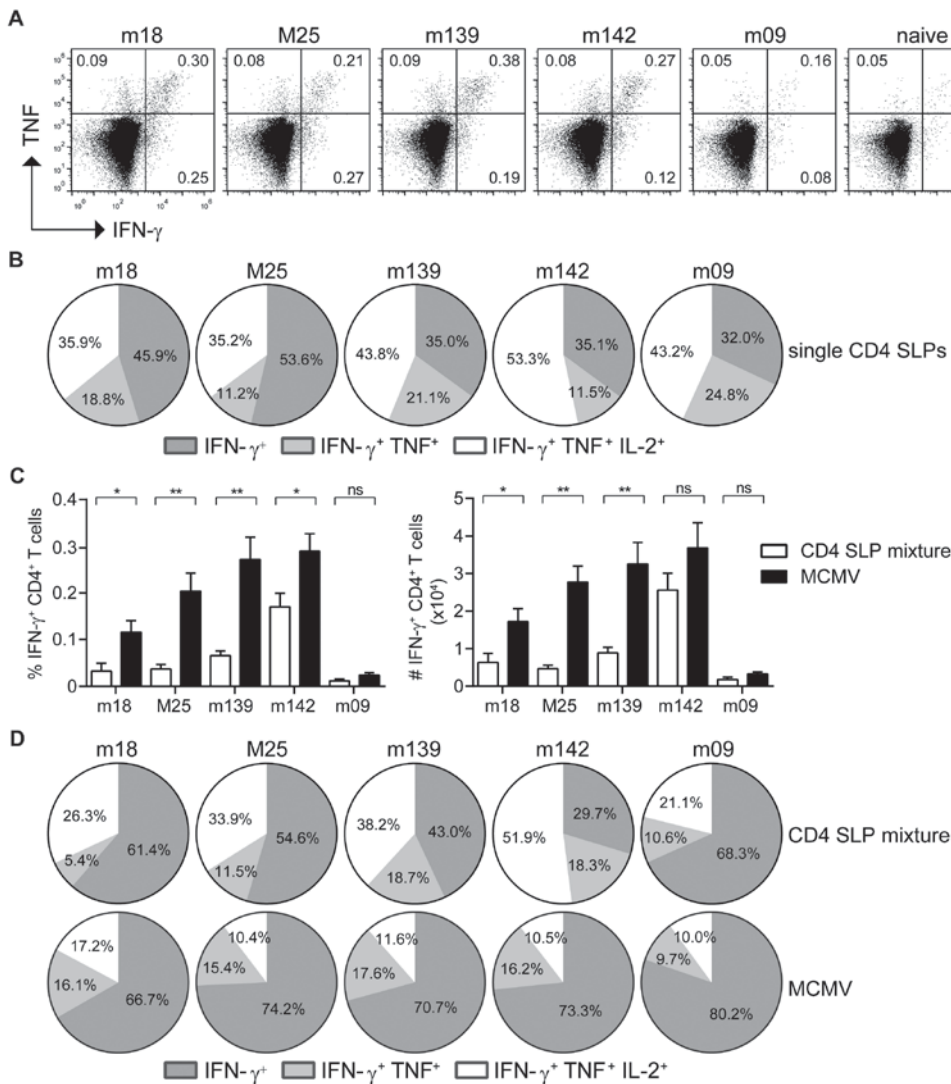


Figure 1. Prime-boost SLP vaccination with combined MHC class II SLPs provokes the induction of strong and polyfunctional CD4⁺ T cell responses. (A) At day 8 post booster vaccination with single SLPs containing MHC class II epitopes, the magnitude of the CD4⁺ T cell responses specific to the indicated epitopes was determined by intracellular cytokine staining after restimulation with peptide. Representative plots show percentages of IFN- γ versus TNF cytokine production of the vaccine-elicited CD4⁺ T cells. (B) Pie charts depict the percentages of the single (IFN- γ), double (IFN- γ /TNF) and triple (IFN- γ /TNF/IL-2) cytokine producers of each antigen-specific CD4⁺ T cell population at day 8 post booster vaccination with single MHC class II SLPs. (C) Percentages (left) and total numbers (right) of splenic SLP and MCMV-specific IFN- γ ⁺ CD4⁺ T cells at day 8 post booster vaccination with a mixture of all 5 MHC class II SLPs are shown. (D) Pie charts depict the percentages of the single (IFN- γ), double (IFN- γ /TNF) and triple (IFN- γ /TNF/IL-2) cytokine producers of each antigen-specific CD4⁺ T cell population at day 8 after booster vaccination with a mixture of all 5 MHC class II SLPs. Data represent mean values, and are representative of 3 independent experiments (n=4-5 per group). *, P < 0.05; **, P < 0.01; ns, not significant.

administration (i.e. during priming only, during booster only or during priming and booster) in order to obtain the most optimal CD4⁺ T cell stimulation (Figure 2A). The magnitude of the T cell response elicited by the SLP containing the M25₄₀₉₋₄₂₃ epitope was measured 8 days post booster vaccination in the spleen. OX40 stimulation clearly increased the magnitude of the M25₄₀₉₋₄₂₃-specific CD4⁺ T cell responses, and remarkably this was most prominent when the mice received agonistic OX40 antibody during the booster vaccination only (Figures 2B, C). Markedly, a >100-fold increase in IFN- γ ⁺ CD4⁺ T cells was observed when compared to SLP vaccination without enforced OX40 stimulation, whereas the response was 17-fold and 5-fold higher than in mice receiving OX40 antibody during priming only or during both priming and booster vaccination, respectively (Figure 2C). In addition, there was a striking gain in cytokine polyfunctionality when agonistic OX40 antibody was provided during booster vaccination only (Figures 2D-F). Compared to SLP vaccination, the increase in absolute numbers of triple IFN- γ /TNF/IL-2 producers was even >200 fold (Figure 2E).

Next, we examined whether the strong increase in MCMV-specific CD4⁺ T cells by administration of agonistic OX40 antibody during booster vaccination was also evident in case of a mixture of SLPs. Clearly, at day 8 post booster vaccination a strong increase in both percentages and absolute numbers of the peptide-specific IFN- γ ⁺ CD4⁺ T cells was observed for all epitopes in the mixture (Figure 3A). In addition, administration of OX40 antibody dramatically improved the cytokine polyfunctional traits (Figure 3B). Most profoundly, OX40 stimulation augmented the IL-2 production capacity of the vaccine-induced CD4⁺ T cells (Figure 3B, C). Together, these results demonstrate that activation of the OX40 axis during booster SLP vaccination leads to superior CD4⁺ T cell expansion and induction of cytokine polyfunctionality.

Having established a powerful means to augment SLP vaccines containing MHC class II epitopes, we tested if the used SLPs may comprise unidentified class I epitopes and/or linear B cell epitopes leading to CD8⁺ T cells and antibody responses, respectively. However, intracellular cytokine staining did not reveal any induction of MCMV-specific CD8⁺ T cells and SLP-specific antibody ELISAs were negative (Figures S1A, B in Supplementary Material). Furthermore, increased percentages of activated NK cells were also not detected after SLP vaccination (Figure S1C in Supplementary Material), indicating that the intended MHC class II epitope-containing SLPs with enforced OX40 stimulation exclusively activate antigen-specific CD4⁺ T cell responses.

Provision of OX40 stimulation during booster vaccination also advances SLP-induced CD8⁺ T cell responses

To improve our previously reported CD8⁺ T cell eliciting SLP vaccine modality [22], we here envisaged to combine both MHC class I and II epitope containing SLPs. We therefore, also analysed the impact of OX40 engagement on vaccine-induced CD8⁺ T cells in a similar scheduling experiment using a SLP exclusively containing the CD8⁺ T cell peptide epitope M57₈₁₆₋₈₂₄ (Figure S2A in Supplementary Material). Consistent

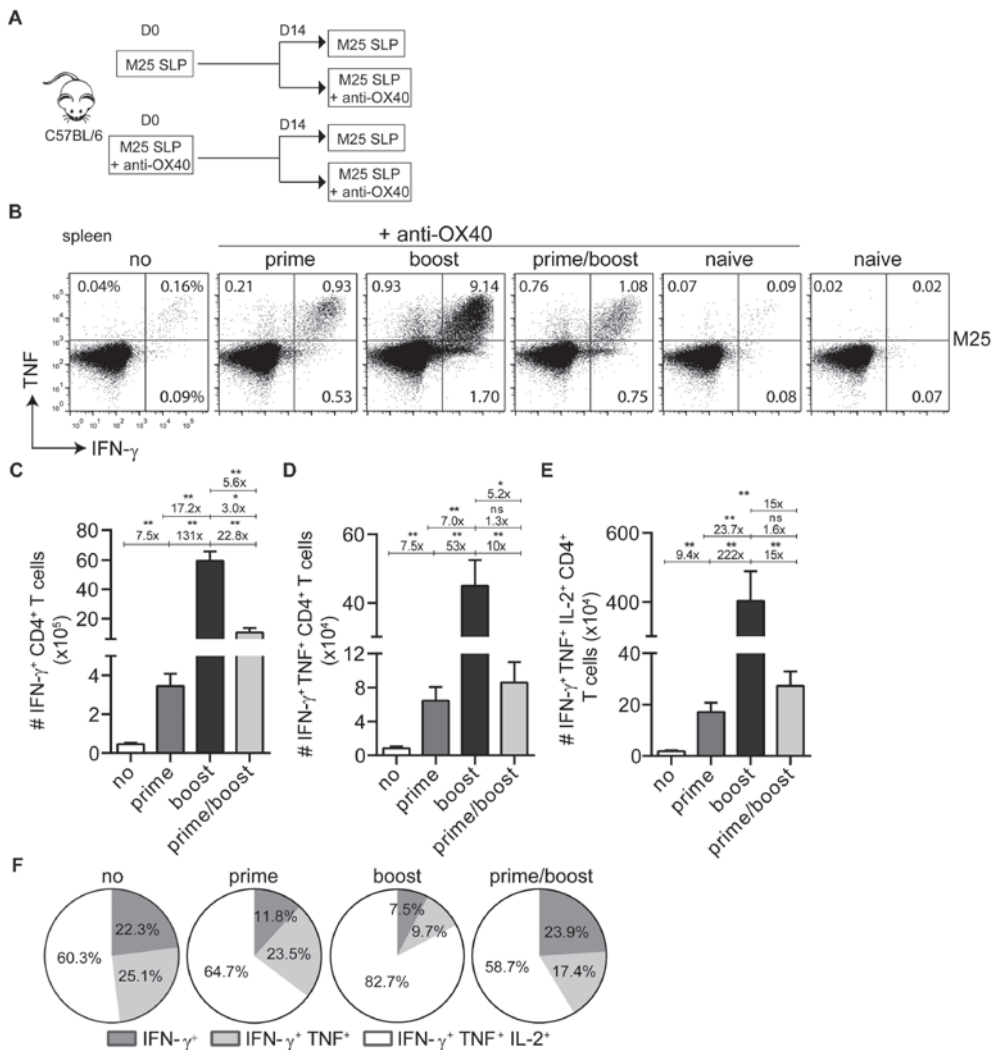


Figure 2. Activation of the OX40 axis during booster vaccination with a single MHC class II SLP vaccine propels increment of the vaccine-induced CD4⁺ T cell response. (A) Scheme of the experimental procedure and the vaccination timeline. Wild type C57BL/6 mice were vaccinated (i) s.c with M25₄₀₉₋₄₂₃ MHC class II SLP alone or (ii) with M25₄₀₉₋₄₂₃ MHC class II SLP (s.c.) along with anti-OX40 mAb (i.p.). 2 weeks after prime vaccination mice from group (i) and (ii) were divided into two groups respectively and a booster immunization was administered. Half mice received only the M25₄₀₉₋₄₂₃ SLP and the other half were injected anti-OX40 mAb in addition to the M25₄₀₉₋₄₂₃ SLP. (B) The total size of the splenic M25₄₀₉₋₄₂₃ SLP vaccine induced CD4⁺ T cells from each group was measured by intracellular cytokine staining. Representative plots depict percentages of IFN- γ versus TNF cytokine producing CD4⁺ T cell populations at day 8 post booster vaccination. (C) Total numbers of splenic IFN- γ ⁺ producing M25₄₀₉₋₄₂₃ antigen-specific CD4⁺ T cells at day 8 post booster SLP vaccination and differential anti-OX40 mAb treatment are shown. (D) Total double (IFN- γ /TNF) and (E) triple (IFN- γ /TNF/IL-2) cytokine producers of M25₄₀₉₋₄₂₃ vaccine-specific CD4⁺ T cells measured in spleen at day 8 post booster vaccination. Fold differences among each population ▶

▶ are also depicted (F) Pie charts show the percentages of the single (IFN- γ), double (IFN- γ /TNF) and triple (IFN- γ /TNF/IL-2) cytokine producers of each M25409–423-specific CD4⁺ T cell population upon vaccination with M25409–423 SLP and anti-OX40 mAb. Data represent mean values, and are representative of three independent experiments (n=5-6 per group). *, P < 0.05; **, P < 0.01; ns, not significant.

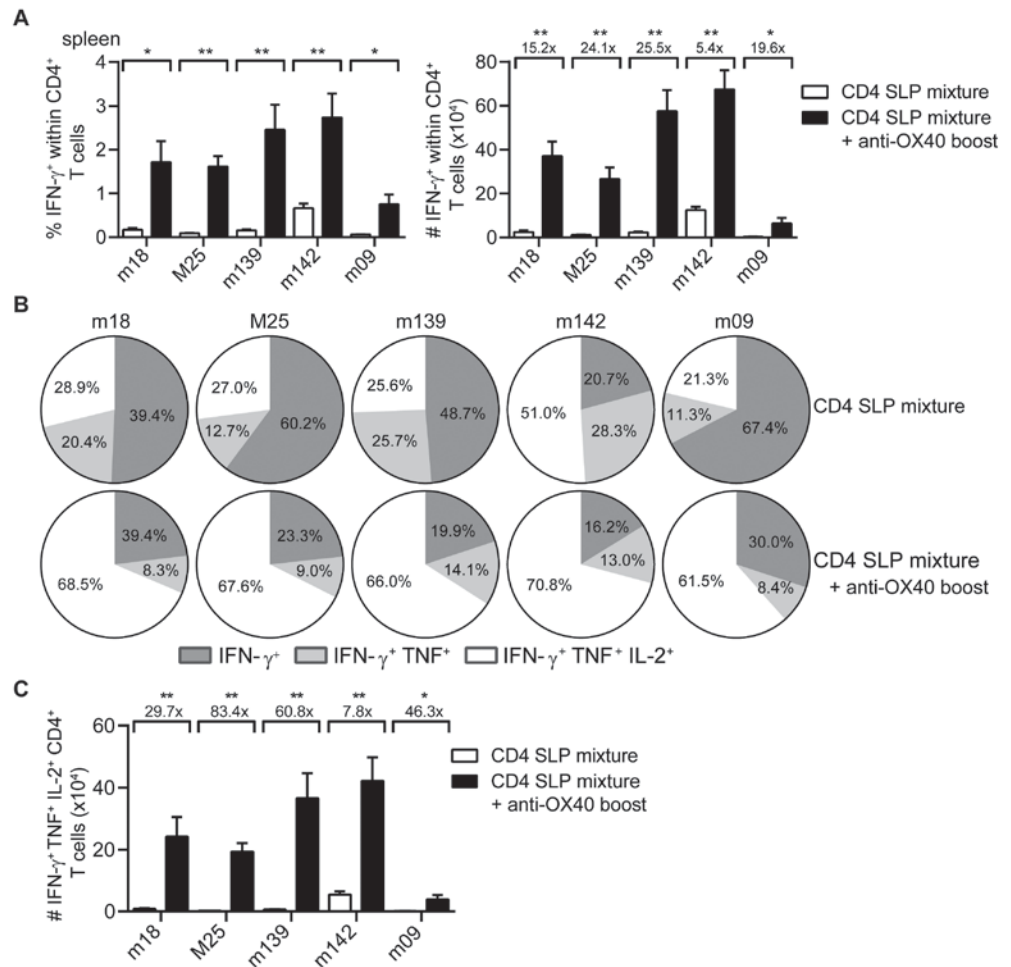


Figure 3. OX40 activation during booster vaccination with combinatorial MHC class II SLP vaccines leads to the induction of robust and polyfunctional CD4⁺ T cell responses. (A) Percentages (left) and total numbers (right) of the splenic epitope-specific IFN- γ ⁺ CD4⁺ T cell responses elicited at day 8 post booster vaccination with a mixture of SLPs containing MHC class II epitopes alone (CD4 SLP mixture; white bars) or with SLPs containing MHC class II epitopes and anti-OX40 mAb (CD4 SLP mixture + anti-OX40 boost; black bars). (B) Pie charts show the percentages of the single (IFN- γ), double (IFN- γ /TNF) and triple (IFN- γ /TNF/IL-2) cytokine producers of each antigen-specific CD4⁺ T cell population at day 8 post booster vaccination with a mixture of MHC class II SLPs alone or with MHC class II SLPs plus anti-OX40 mAb. (C) Total triple (IFN- γ /TNF/IL-2) cytokine producers of each antigen-specific CD4⁺ T cell population were ▶

- ▶ measured in spleen at day 8 post booster vaccination with a mixture of MHC class II SLPs and anti-OX40 mAb or with SLPs alone. Fold difference is indicated. Data represent mean values, and are representative of 3 independent experiments (n=6 per group). *, P< 0.05; **, P< 0.01.

with the results described for CD4⁺ T cells, mice that were vaccinated and treated with agonistic OX40 antibody during booster vaccination displayed the strongest SLP-induced CD8⁺ T cell response in both blood and spleen (Figures S2B-F in Supplementary Material). The number of SLP-induced CD8⁺ T cells, determined either by IFN- γ reactivity or by MHC class I tetramer binding, at the peak after the boost were similar, indicating that OX40 stimulation during SLP vaccination (provided either during priming, during booster or during prime/boost) induces functional (non-exhausted) CD8⁺ T cells (Figures S2C,D in Supplementary Material). The cell-surface phenotype based on KLRG1 and CD127 of the vaccine-induced CD8⁺ T cells at the peak of the response after the booster was comparable (Figure S2G in Supplementary Material).

Next, the impact of OX40 stimulation during booster vaccination was evaluated for a mixture of MHC class I epitope-containing SLPs. Longitudinal analysis of the SLP-specific CD8⁺ T cell response revealed that OX40 stimulation during booster vaccination clearly amplifies the expansion of all SLP vaccine-induced CD8⁺ T cells measured in blood and spleen (Figures 4A, B), although this effect was relatively lower when compared to that seen for CD4⁺ T cells. At the peak of the response, 8 days after booster SLP vaccination, the magnitude of the IFN- γ ⁺CD8⁺ T cell response specific for each MHC class I-restricted epitope was again proportional to the MHC class I tetramer response (data not shown). However, the polyfunctional cytokine profile was improved upon OX40 stimulation (Figures 4C, D). In particular OX40 stimulation augmented the percentages and absolute number of the triple cytokine producers in particular (Figures 4C, D).

To gain insight into the mechanisms underlying the apparent impact of OX40 stimulation during booster vaccination, we examined the expression of the pro-apoptotic protein BCL-2, a known target of OX40 triggering and implicated in T cell survival [27]. BCL-2 expression was up-regulated by the vaccine-specific CD8⁺ T cells when OX40 stimulation was provided during booster vaccination compared to no OX40 stimulation (Figure 4E). Moreover, when agonistic OX40 antibody was administered during both primary and booster vaccination, BCL-2 expression was down-regulated. These results indicate that stimulation of OX40 can bolster vaccine-induced CD8⁺ T cell expansion through a BCL-2 dependent mechanism, if this stimulation is correctly scheduled.

Over time, the SLP-induced CD8⁺ T cell responses contracted, yet the OX40 boosted epitope-specific CD8⁺ T cell responses to M38, M45 and M57 were maintained at higher levels (Figures 5A). At the memory phase (60 days after booster vaccination), there were higher percentages and numbers of triple (IFN- γ /TNF/IL-2) cytokine producing vaccine-

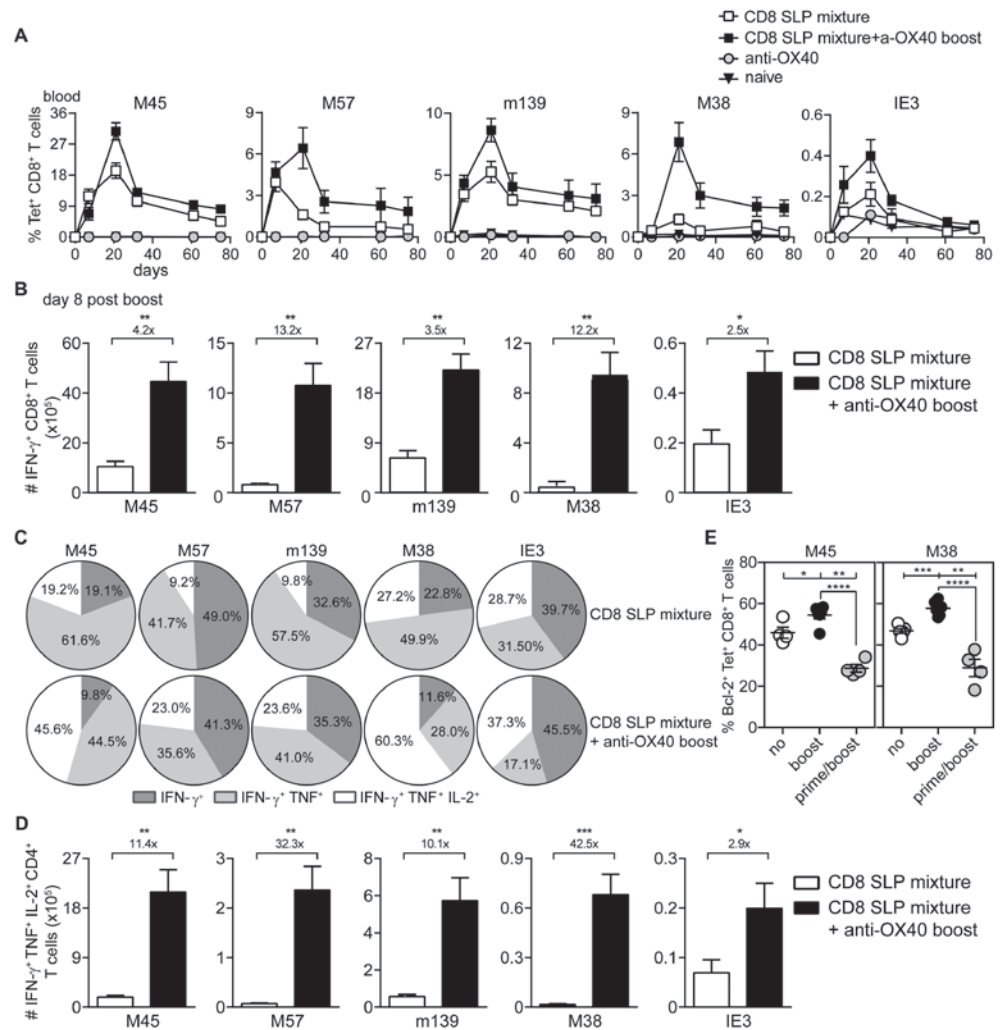


Figure 4. OX40 ligation during booster vaccination with a mixture of MHC class I-epitope containing SLPs leads to the induction of strong and polyfunctional CD8⁺ T cell responses. (A) Longitudinal analysis of the epitope-specific CD8⁺ T cell responses in blood induced by combinatorial MHC class I epitope containing SLP vaccines without (CD8 SLP mixture) and with anti-OX40 mAb administration (given only during booster vaccination) (CD8 SLP mixture + a-OX40 boost). Data represents mean values \pm SEM (n=12 per group). (B) Total IFN- γ ⁺ cytokine producing CD8⁺ T cells for each antigen-specific population detected in spleen at day 8 post booster vaccination with CD8 SLP mixture (white bars) or with CD8 SLP mixture + anti-OX40 boost (black bars). (C) Pie charts show the percentages of the single (IFN- γ), double (IFN- γ /TNF) and triple (IFN- γ /TNF/IL-2) specific cytokine producers of the antigen-specific CD8⁺ T cell populations at day 8 post booster vaccination. (D) Total numbers of IFN- γ ⁺/TNF⁺/IL-2⁺ cytokine producing CD8⁺ T cells for each antigen-specific population detected in spleen at day 8 post booster vaccination. (E) At day 8 after booster vaccination with combined MHC class I SLPs and/or anti-OX40 mAb (during booster or during both prime/boost), the BCL-2 protein expression was measured within the antigen specific CD8⁺ T cells in spleen by flow cytometry. Fold changes between groups are ▶

depicted. Data represents mean values + SEM (n=6 mice per group), and are representative of 3 independent experiments. *, P < 0.05; **, P < 0.01; ***, P < 0.001; ****, P < 0.0001.

3

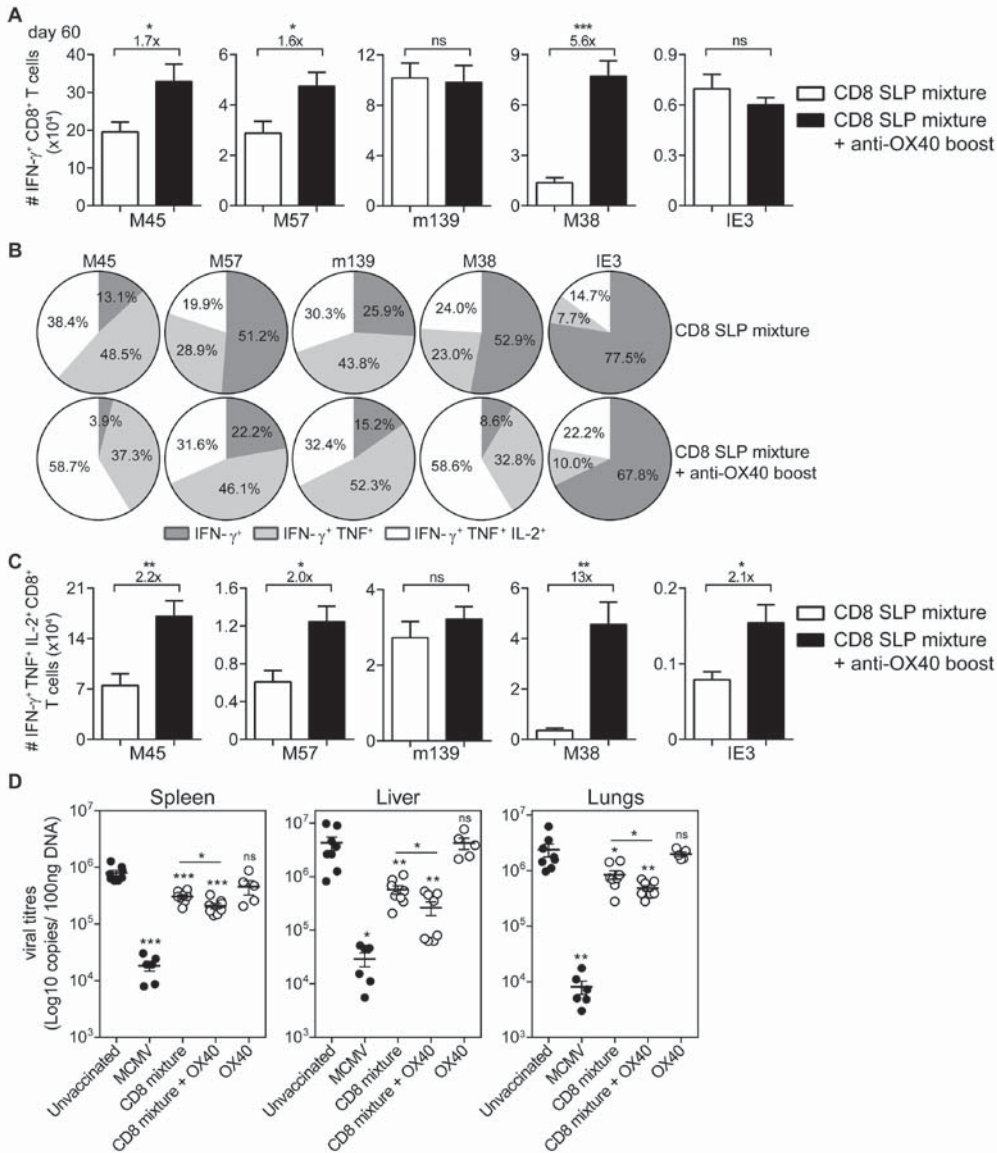


Figure 5. Agonistic OX40 mAb administration during booster vaccination leads to improved memory SLP-elicited CD8⁺ T cell responses. (A) Total single IFN- γ ⁺ cytokine producing CD8⁺ T cells for each antigen-specific population detected in spleen at day 60 post booster vaccination with combinatorial MHC class I SLPs and anti-OX40 mAb (provided during booster vaccination) (CD8 SLP mixture + anti-OX40 boost) or with MHC class I SLPs alone (CD8 SLP mixture). Fold changes between groups are depicted. Data represents mean values + SEM (n=6 per group). **(B)** Pie charts show the percentages of the single (IFN- γ), double (IFN- γ /TNF) and triple (IFN- γ /

- ▶ TNF/IL-2) cytokine producers of each antigen-specific CD8⁺ T cell population in spleen at day 60 post booster vaccination with a mixture of MHC class I SLPs and anti-OX40 mAb (administered only during booster vaccination) or with MHC class I SLPs alone. (C) Total triple IFN- γ ⁺/TNF⁺/IL-2⁺ producing CD8⁺ T cells for each antigen-specific population detected in spleen at day 60 post booster vaccination. Fold changes between groups are depicted. Data represents mean values + SEM (n=6 per group). (D) Different groups of mice (unvaccinated (naive), MCMV infected (live virus vaccine), vaccinated with a mixture of all 5 MHC class I SLPs, vaccinated with a mixture of all 5 MHC class I SLPs and anti-OX40 mAb (given only during booster vaccination) or treated with a-OX40 mAb only) were challenged at day 60 post vaccination/infection with 5×10^4 PFU salivary gland-derived MCMV Smith. At day 5 post challenge spleen, liver and lungs were harvested and the viral genome copies were determined by qPCR. The viral titers of individual mice are depicted (n=5-8 mice per group). Mean \pm SEM is indicated. The detection limit was below 1000 genome copies as measured in naive mice. Experiments were performed twice with similar outcome. *, P < 0.05; **, P < 0.01; ***, P < 0.001; ns, not significant as compared to the unvaccinated group unless otherwise indicated.

induced CD8⁺ T cells in mice that received agonistic OX40 antibody during booster vaccination (except for m139₄₁₉₋₄₂₆) (Figures 5B, C).

We also tested the impact of the in vivo OX40 stimulation on the secondary expansion potential, a hallmark of memory T cells. We performed adoptive transfer experiments in which congenically marked (CD45.1⁺) memory CD8⁺ T cells from SLP vaccinated mice were isolated and transferred into naïve recipient mice, which were subsequently challenged with MCMV (Figure S3A in Supplementary Material). Overall, the SLP-induced memory CD8⁺ T cells isolated from mice that also received OX40 stimulation during booster vaccination expanded better compared to the vaccine only group (Figure S3B, C in Supplementary Material).

Subsequently, we examined whether OX40 stimulation is able to further improve the prophylactic efficacy of the combined MHC class I SLP vaccine. At day 60 post booster vaccination, mice were virally challenged and the titres were quantified in spleen, liver and lungs. Similar to our previous study [22], vaccination with a mixture of MHC class I SLPs resulted in reduction of the virus titres (Figure 5D). Mice that received OX40 stimulation during the booster showed increased potency to control the virus compared to mice that received no extra stimulation of OX40 (Figure 5D). All together, these data suggest that enforced OX40 stimulation during booster SLP vaccination does not only impact the expansion of activated CD8⁺ T cells but also has a long-lasting constructive influence on the magnitude and the functional profile of the vaccine-elicited CD8⁺ T cells leading to more effective viral control.

SLP vaccines inducing both CD4⁺ and CD8⁺ T cells confer superior protection against MCMV infection

To evaluate if the provision of CD4⁺ T cells would benefit the CD8⁺ T cell response, C57BL/6 mice were vaccinated with a mixture of either all 5 MHC class I epitope-

containing SLPs or with a mixture of all 5 MHC class I and all 5 class II epitope-containing SLPs (Table 1 in Supplementary Material). Agonistic OX40 mAb was provided during the boost only. The CD8⁺ T cell response after the prime vaccination was higher when the SLP vaccine contained a mixture of MHC class I and II peptide epitopes (Figure 6A and Figure S4A in Supplementary Material), stressing the importance of CD4⁺ T cell help during the priming. Also, the phenotype of the vaccine-induced CD8⁺ T cells after prime vaccination revealed slightly more effector-type (KLRG-1⁺CD127⁻) CD8⁺ T cells when CD4⁺ T cell help was provided (Figure S4B Supplementary Material), whereas the polyfunctionality of the vaccine-induced CD8⁺ T cells remained unchanged (data not shown). However, at day 7/8 after booster SLP vaccination, the effect of CD4⁺ T cell help on the magnitude of the vaccine-induced CD8⁺ T cell response was no longer detectable in blood (Figure 6A) and spleen (Figure 6B). At this time-point, also no difference in the CD8⁺ T cell cytokine polyfunctionality and phenotype was found (Figures 6C, D). Furthermore, the size and polyfunctionality of the CD4⁺ T cells responses induced at the peak response after combined MHC class I and II SLP vaccination was similar as vaccination with MHC class II SLPs only (Figures S5A, B in Supplementary Material). Taken together, vaccination with a mixture of MHC class I and II epitope-containing SLPs resulted in enhanced primary CD8⁺ T cell expansion compared to vaccination with class I epitope-containing SLPs only, but no additional effects of the helper T cells were observed after the enforced OX40 stimulation provided during booster vaccination.

Ultimately, we analysed the prophylactic efficacy of the SLP-induced MCMV-specific CD4⁺ and CD8⁺ T cells to control viral replication. At day 60 post booster SLP vaccination, mice were infected with MCMV and 5 days later the viral titers were quantified. The viral load of unvaccinated (naive) mice challenged with MCMV was found significantly higher in spleen, liver and lungs compared to the viral load of mice that received earlier a virulent virus as a vaccine. This result suggests that pre-existing immunity to MCMV can inhibit virus replication during subsequent infection (Figure 7). Furthermore, the viral titers of mice that had received the virulent virus-based vaccine were similar to those measured during chronic MCMV infection, indicating that this is the maximum of immune control that can be achieved. Mice vaccinated with the mixture of SLPs containing MHC class II epitopes plus OX40 triggering during booster vaccination displayed significant reduction in viral load in all tested organs (Figure 7), indicating that the SLP-induced MCMV-specific CD4⁺ T cells display direct antiviral properties. Vaccination with the mixture of MHC class I SLPs plus anti-OX40 during booster resulted in a more efficient reduction of viral load in all organs. Strikingly, mice that received a mixture of MHC class I and II epitope-containing SLPs and OX40 stimulation during booster vaccination displayed the strongest reduction in viral load (Figure 7). Notably, the SLP vaccine-induced reduction in viral load in the spleen and liver was almost as effective as to what is observed after vaccination with virulent virus. Thus, SLP vaccines comprising a mixture of MHC class I and II SLPs has the highest protection potency

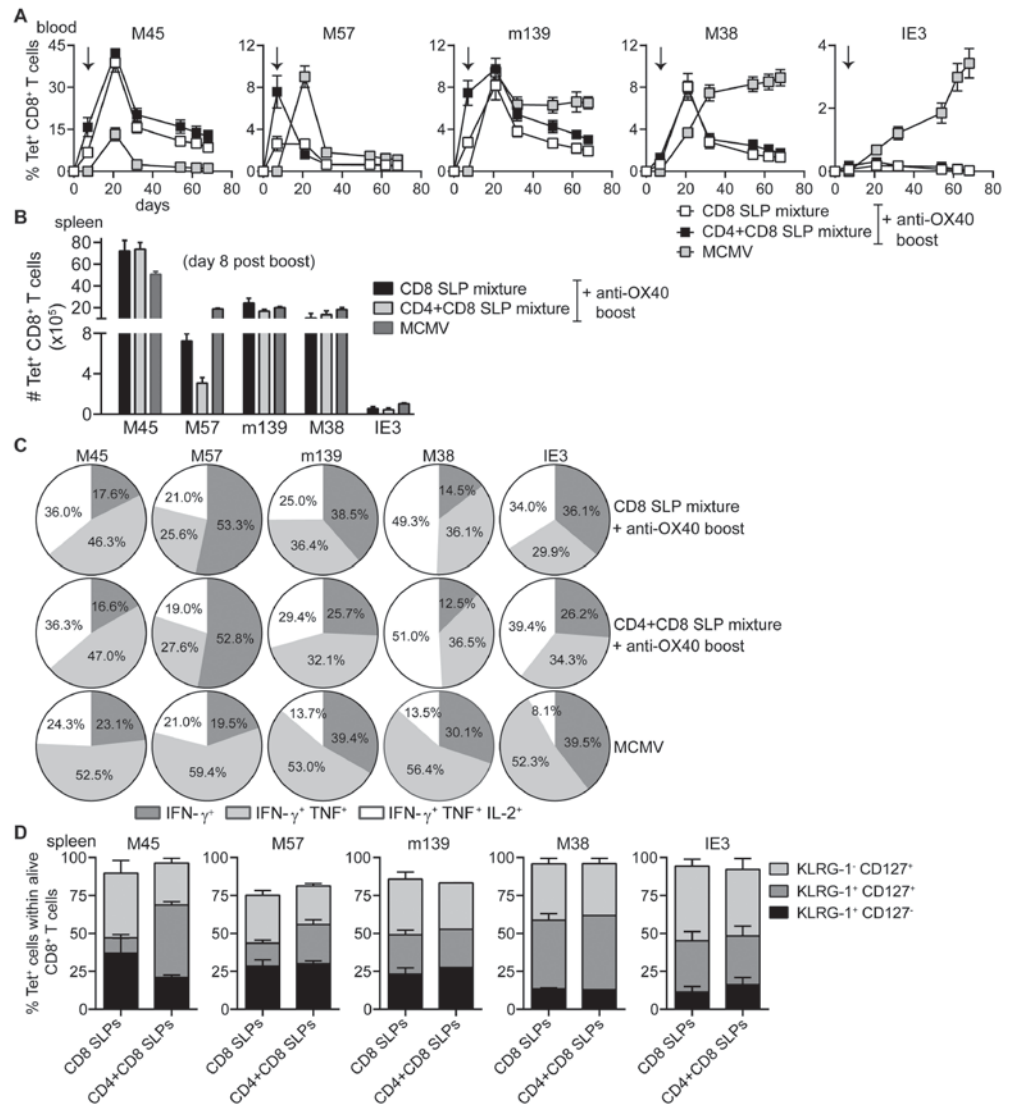
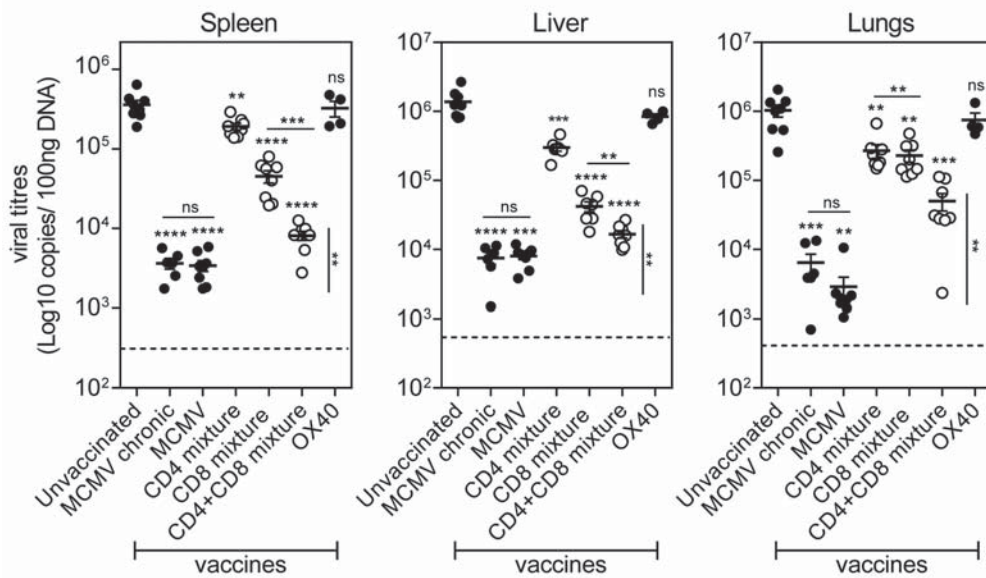


Figure 6. Combinatorial MHC class I and class II epitope-containing SLP vaccines and OX40 agonistic mAb during booster vaccination leads to robust induction of both CD4⁺ and CD8⁺ T cell responses. C57BL/6 mice were vaccinated s.c. with a combination of all MHC class I epitope-containing SLPs (CD8 SLP) or with a combination of all MHC class I and MHC class II-epitope containing SLPs (CD4 + CD8 SLP). In both groups agonistic OX40 mAb was administered i.p. during booster vaccination. **(A)** Kinetics of the antigen-specific CD8⁺ T cells measured by MHC class I tetramer staining in blood. Data shown are mean values \pm SEM (n=18 mice/group) **(B)** Total MHC class I tetramer-specific CD8⁺ T cells induced by combinatorial MHC class I or MHC class I plus MHC class II SLP vaccination compared to MCMV infection at day 8 post booster vaccination in spleen. Data represent mean values (n=5 mice/group). **(C)** The cytokine production capacity of the splenic SLP vaccine-induced CD8⁺ T cells was examined by intracellular cytokine staining at day 8 after booster vaccination. Pie charts depict the percentages of the single (IFN- γ), double

- ▶ (IFN- γ /TNF) and triple (IFN- γ /TNF/IL-2) cytokine producers of each antigen-specific CD8⁺ T cell populations at day 8 post booster vaccination. (D) Phenotypic analysis of the combinatorial SLP vaccine-induced CD8⁺ T cells in spleen at day 8 post booster vaccination. Data represent mean values (n=5 mice/group) and are representative of three independent experiments.



3

Figure 7. Prime-boost vaccination with combinatorial MHC class I and class II epitope-containing SLPs exhibits increased potency to protect against lytic MCMV infection. Unvaccinated (naive), MCMV (live-virus vaccine), combined MHC class II SLPs (CD4 mixture), combined MHC class I SLPs (CD8 mixture), combined MHC class I and II SLPs (CD4+CD8 mixture) and anti-OX40 mAb only treated C57BL/6 mice were challenged 60 days post booster-vaccination/infection with 5×10^4 PFU salivary gland-derived MCMV Smith. At day 5 post challenge, liver, lungs and spleen were harvested and the viral genome copies were quantified by qPCR. To further evaluate the efficacy of the vaccines, the viral titers of chronically infected (MCMV chronic/day 60) mice were also measured. The viral titers of individual mice are depicted (n=4-8 per group). Statistical significance between the unvaccinated group and the rest of the groups is indicated with asterisks above each group. A statistical comparison between the CD4 + CD8 mixture group and the MCMV (live virus vaccine) and MCMV chronic group was also performed (vertical statistical bar). For both comparisons the statistical difference was found the same (**, $P < 0.01$). The detection limit was below 1000 genome copies as measured in naive mice. Experiment was performed twice with similar outcome. Statistical difference is indicated **, $P < 0.01$; ***, $P < 0.001$; ****, $P < 0.0001$; ns, not significant as compared to the unvaccinated group unless otherwise indicated.

compared to similar vaccines that elicit merely MCMV-specific CD4⁺ or CD8⁺ T cell responses. All together, we conclude that OX40 activation during booster vaccination empowers SLP-induced memory CD4⁺ and CD8⁺ T cells to efficiently counteract lytic MCMV infection.

DISCUSSION

In this study, we show that SLP-based vaccine strategies eliciting vigorous polyfunctional CD4⁺ and CD8⁺ T cell responses are highly effective against MCMV infection. While SLP-based vaccines that evoke solely CD8⁺ T cell responses display already efficacy against lytic MCMV infection [22], vaccination with a mixture of various immunodominant MHC class II and MHC class I MCMV epitopes and the combination with enforced OX40 stimulation results in superior vaccine efficacy. Former explored CMV vaccines focused mainly on the induction of neutralizing antibodies and thus far did not show substantial efficacy [3-5]. Our finding that SLP-based vaccines that merely provoke CD4⁺ and CD8⁺ T cell responses are almost as efficient as a virulent vaccine suggests that the inclusion of T cell stimulating antigens should facilitate the design of more efficient vaccines against CMV.

Signals through the OX40 costimulatory receptor are known to regulate expansion and survival of both CD4⁺ and CD8⁺ T cells after antigen encounter [26,28]. Consistent with this, OX40 had a robust effect on the magnitude of the effector SLP vaccine-induced CD4⁺ and CD8⁺ T cells and on their capacity to induce “Th1” cytokine responses (especially IL-2). This effect of OX40 costimulatory signals was stronger when agonistic antibody to OX40 was provided during booster SLP vaccination. We hypothesize that primed T cells more rapidly and stronger upregulated OX40 leading to greater benefit during enforced OX40 stimulation. OX40 ligation seems to work better on CD4⁺ T cells as compared to CD8⁺ T cells, which may be related to the higher expression of OX40 on CD4⁺ T cells [29,30]. Due to its capacity to regulate both CD4⁺ and CD8⁺ T cells, OX40 is a promising candidate in immunotherapy of chronic viral infections and cancer [28]. In this study we did not detect toxicity of OX40 agonistic antibodies but a better understanding of potential side-effects is required.

CD4⁺ T cell responses in CMV infection have been long known as important contributors to control primary infection [9,31]. In MCMV infection, CD4⁺ T cells direct the quality and persistence of inflammatory CD8⁺ T cells and B cell responses [23,24,32]. Here we show that vaccine-induced CD4⁺ T cells solely can confer moderate protection against acute MCMV infection. These results are consistent with other reports showing CD4⁺ T cell effectivity against MCMV and HCMV [9,12,25,33-35]. Furthermore, we observed that addition of CD4⁺ T cell help during vaccination with MHC class I SLP vaccines promoted priming of naïve CD8⁺ T cells. After booster vaccination in settings wherein OX40 costimulation was enhanced, no additional effects of CD4 help on the magnitude and phenotype of the CD8⁺ T cells were observed, suggesting that

enforced OX40 stimulation during booster vaccination may replace the need for CD4 help signals. On this basis, the improved prophylactic vaccine efficacy of the combined MHC class I and II SLP vaccines appears to be more additive rather than synergistic.

Another interesting observation was that the vaccine efficacy was somewhat better in liver and spleen than in lungs. A possible explanation for this discrepancy is that the SLP-induced CD8⁺ T cells are better capable to control the virus (lowering the viral titers) in the spleen and liver than the SLP-induced CD4⁺ T cells. A marked difference in the efficacy of SLP-induced CD4⁺ and CD8⁺ T cells as observed in liver and spleen is not found in the lungs, and can thus be dictated by the tissue environment. Differences in site-specific control of MCMV-specific CD4⁺ and CD8⁺ T cells is known to be especially important in the salivary glands but for other tissues this may be important as well [36]. Nevertheless, the combined SLP vaccines inducing both CD4⁺ and CD8⁺ T cell responses clearly improved the efficacy of the vaccine in all organ tissues. In this respect it is of interest to note that SLP-based vaccines can be further refined by different prime-booster regimens, inclusion of B cell epitopes and by combinations with adjuvants, immunomodulatory antibodies or other vaccine platforms [37].

This study provided evidence that SLP-based vaccines eliciting broad CD4⁺ and CD8⁺ T cell responses can effectively control lytic MCMV infection without contribution by humoral responses. The use of OX40 as an adjuvant for MCMV peptide immunization strongly bolstered the development of effective CD4⁺ and CD8⁺ T cells. Future studies to examine the ability of the SLP vaccine-induced T cells and OX40 costimulation to boost immune responses in immunocompromised settings of CMV infection or other chronic viral infections are strongly encouraged by these promising findings. Taken together, our data highlight the importance of designing CMV vaccines that elicit effective CD4⁺ and CD8⁺ T cell responses.

MATERIALS AND METHODS

Mice

Wild-type female C57BL/6 mice (8-10 weeks) were purchased from Charles River Laboratories (L'Arbresle, France) and Ly5.1 (SJL; CD45.1) congenic mice on a C57BL/6 genetic background were obtained from The Jackson Laboratory. Mice were bred and housed under specific-pathogen-free (SPF) conditions at the Central Animal Facility of Leiden University Medical Center (LUMC). Experimental procedures were approved by the LUMC Animal Experiments Ethical Committee and conducted according to the Dutch Experiments on Animals Act and the Council of Europe (#13156 and #14187).

Viral infections

Virus stocks were prepared from salivary glands of BALB/c mice infected with MCMV-Smith (*American Type Culture Collection* (ATCC)). The viral titres of the produced virus

stocks were determined by viral plaque assays with *mouse NIH-3T3 Embryonic Fibroblasts* (ATCC). C57BL/6 mice were infected intraperitoneally (i.p) with 5×10^4 PFU MCMV in 400 μ l of PBS. 60 days post-booster vaccination or infection, mice were (re)-challenged with 5×10^4 PFU MCMV. Viral loads in spleen, liver and lungs were determined by real-time PCR at day 5 post challenge as described previously [38]. Due to differences in peak viral replication, the viral load in the salivary glands was not measured.

Peptides and vaccination

Short (9-10 aa) and long (20-21 aa) peptides containing MHC class I-restricted T cell epitopes [22] and 15 aa long peptides containing MHC class II epitopes [39] were produced at the GMP-peptide facility of the LUMC. The purity (75-90%) of the synthesized peptides was determined by HPLC and the molecular weight by mass spectrometry. All peptide sequences used in this study are listed and described in S1 Table in Supplementary Material. Both single and mixed synthetic long peptide (SLP) vaccines were administered subcutaneously (s.c) at the tail base by delivery of 50 μ g of each SLP and 20 μ g CpG (ODN 1826, InvivoGen) in a total volume of 50 μ l in PBS. Booster SLP vaccinations were provided after 2 weeks. At the indicated times (during prime and/or booster vaccination), mice were injected i.p. with 150 μ g agonistic OX40 mAb (clone OX86) dissolved in 150 μ l of PBS. All SLP vaccine administrations were well tolerated without adverse events and signs of hypersensitivity.

Flow cytometry

To evaluate CD4⁺ and CD8⁺ T cell responses, cell surface and intracellular cytokine staining in splenocytes and blood lymphocytes were performed as previously described [40]. In brief, to determine the cytokine production capacity, single-cell suspensions from spleens were stimulated with short MHC class I peptides (2 μ g/ml) for 5 h in the presence of brefeldin A (Golgiplug; BD Pharmingen) or with long MHC class II peptides (5 μ g/ml) for 8 h of which the last 6 h in presence of brefeldin A. MHC class I tetramers specific for the M45_{985-993'}, M57_{816-824'}, m139_{419-426'}, M38_{316-323'} and IE3₄₁₆₋₄₂₃ MCMV epitopes were used. Fluorochrome-conjugated mAbs were obtained from BD Biosciences, Biolegend or eBioscience. Flow cytometry gating strategies are shown in S6 Fig. All data were acquired on a LSRFortessa cytometer (BD Biosciences) and analysed with FlowJo-V10 software (Tree star).

Antibody detection by ELISA

Total IgG, IgG_{2b'}, IgG_{2c'}, IgG_{3'}, IgE and IgA concentrations were determined by ELISA in serum samples as previously described [38]. Briefly, Nunc-Immuno Maxisorp plates (Fisher Scientific) were coated overnight with 2 μ g/ml MHC class II SLPs in bicarbonate buffer, and after blocking (skim milk powder, Fluka BioChemika) sera from mice i) chronically infected, ii) long term vaccinated with MHC class II SLP vaccines and anti-OX40 mAb treated (i.p. during booster vaccination only) or iii) uninfected were added. Next, plates

were incubated with various HRP-conjugated antibodies (SouthernBiotech) to detect different immunoglobulin isotypes. Plates were developed with TMB substrate (Sigma Aldrich) and the colour reaction was stopped by the addition of 1 M H₂SO₄. To serve as a positive control, a peptide from the M2 protein (eM2) of influenza A virus with known ability to induce antibodies and corresponding serum was used. Optical density was read at 450 nm (OD₄₅₀) using a Microplate reader (Model 680, Bio-Rad).

Adoptive T cell transfers

The secondary expansion potential of the SLP vaccine-induced antigen-specific CD8⁺ T cells receiving agonistic OX40 mAb only during booster vaccination was determined by adoptive transfers. Splenic memory (day 65) CD8⁺ T cells from SLP vaccinated CD45.1⁺ congenic mice were negatively enriched with magnetic sorting using the CD8⁺ T cell isolation kit (Miltenyi Biotec). 2×10^6 total CD8⁺ T cells were retro-orbitally injected (in a total volume of 200 μ l in PBS) into naive CD45.2⁺ recipients. Recipient mice were rested for 2 hours and concomitantly infected with 5×10^4 PFU MCMV. Subsequently, in order to quantify the number of the vaccine-antigen specific CD8⁺ T cells that was transferred, a representative amount of cells was stained with MHC class I tetramers and with fluorochrome labelled antibodies against CD44, CD3, CD4 and CD8. The number of the donor's vaccine-specific T cells transferred was ranging between 8×10^3 - 2.5×10^4 cells for the group that did not receive OX40 mAb and between 1.8×10^4 - 4.5×10^4 cells for the OX40 mAb boosted group. 6 days later the number of vaccine-specific CD8⁺ T cells of the donor was measured (based on the expression of the CD45.1 marker) by flow cytometry, and the fold expansion was calculated.

Statistical analyses

Statistics were calculated using the unpaired Student's t-test or ANOVA in GraphPad Prism software (GraphPad Software Inc., USA). *p < 0.05, **p < 0.01, ***p < 0.001, and ****p < 0.00001.

ACKNOWLEDGEMENTS

We would like to thank Dr. *Jan Wouter Drijfhout* for peptide synthesis, Kees Franken for providing tetramers and Edwin de Haas for technical assistance with the cell sorting.

REFERENCES

1. Gandhi MK, Khanna R (2004) Human cytomegalovirus: clinical aspects, immune regulation, and emerging treatments. *Lancet Infect Dis* 4: 725-738.
2. Boppana SB, Ross SA, Fowler KB (2013) Congenital cytomegalovirus infection: clinical outcome. *Clin Infect Dis* 57 Suppl 4: S178-S181.
3. Krause PR, Bialek SR, Boppana SB, Griffiths PD, Laughlin CA, et al. (2013) Priorities for CMV vaccine development. *Vaccine* 32: 4-10.
4. McCormick AL, Mocarski ES (2015) The immunological underpinnings of vaccinations to prevent cytomegalovirus disease. *Cell Mol Immunol* 12: 170-179.
5. Wang D, Fu TM (2014) Progress on human cytomegalovirus vaccines for prevention of congenital infection and disease. *Curr Opin Virol* 6: 13-23.
6. Polic B, Hengel H, Krmpotic A, Trgovcich J, Pavic I, et al. (1998) Hierarchical and redundant lymphocyte subset control precludes cytomegalovirus replication during latent infection. *J Exp Med* 188: 1047-1054.
7. Reddehase MJ, Mutter W, Munch K, Buhring HJ, Koszinowski UH (1987) CD8-positive T lymphocytes specific for murine cytomegalovirus immediate-early antigens mediate protective immunity. *J Virol* 61: 3102-3108.
8. Arens R, Loewendorf A, Her MJ, Schneider-Ohrum K, Shellam GR, et al. (2011) B7-mediated costimulation of CD4 T cells constrains cytomegalovirus persistence. *J Virol* 85: 390-396.
9. Gamadia LE, Remmerswaal EB, Weel JF, Bemelman F, van Lier RA, et al. (2003) Primary immune responses to human CMV: a critical role for IFN-gamma-producing CD4+ T cells in protection against CMV disease. *Blood* 101: 2686-2692.
10. Rauser G, Einsele H, Sinzger C, Wernet D, Kuntz G, et al. (2004) Rapid generation of combined CMV-specific CD4+ and CD8+ T-cell lines for adoptive transfer into recipients of allogeneic stem cell transplants. *Blood* 103: 3565-3572.
11. Riddell SR, Watanabe KS, Goodrich JM, Li CR, Agha ME, et al. (1992) Restoration of viral immunity in immunodeficient humans by the adoptive transfer of T cell clones. *Science* 257: 238-241.
12. Jeitziner SM, Walton SM, Torti N, Oxenius A (2013) Adoptive transfer of cytomegalovirus-specific effector CD4+ T cells provides antiviral protection from murine CMV infection. *Eur J Immunol* 43: 2886-2895.
13. Karrer U, Sierro S, Wagner M, Oxenius A, Hengel H, et al. (2003) Memory inflation: continuous accumulation of antiviral CD8+ T cells over time. *J Immunol* 170: 2022-2029.
14. Munks MW, Cho KS, Pinto AK, Sierro S, Klenerman P, et al. (2006) Four distinct patterns of memory CD8 T cell responses to chronic murine cytomegalovirus infection. *J Immunol* 177: 450-458.
15. Arens R, Wang P, Sidney J, Loewendorf A, Sette A, et al. (2008) Cutting edge: murine cytomegalovirus induces a polyfunctional CD4 T cell response. *J Immunol* 180: 6472-6476.
16. O'Hara GA, Welten SP, Klenerman P, Arens R (2012) Memory T cell inflation: understanding cause and effect. *Trends Immunol* 33: 84-90.
17. Welten SP, Redeker A, Franken KL, Benedict CA, Yagita H, et al. (2013) CD27-CD70 costimulation controls T cell immunity during acute and persistent cytomegalovirus infection. *J Virol* 87: 6851-6865.

18. Humphreys IR, Loewendorf A, De TC, Schneider K, Benedict CA, et al. (2007) OX40 costimulation promotes persistence of cytomegalovirus-specific CD8 T Cells: A CD4-dependent mechanism. *J Immunol* 179: 2195-2202.
19. Klenerman P, Oxenius A (2016) T cell responses to cytomegalovirus. *Nat Rev Immunol* advance online publication.
20. Krmpotic A, Bubic I, Polic B, Lucin P, Jonjic S (2003) Pathogenesis of murine cytomegalovirus infection. *Microbes Infect* 5: 1263-1277.
21. Holtappels R, Bohm V, Podlech J, Reddehase MJ (2008) CD8 T-cell-based immunotherapy of cytomegalovirus infection: "proof of concept" provided by the murine model. *Med Microbiol Immunol* 197: 125-134.
22. Panagioti E, Redeker A, van Duikeren S, Franken KL, Drijfhout JW, et al. (2016) The Breadth of Synthetic Long Peptide Vaccine-Induced CD8+ T Cell Responses Determines the Efficacy against Mouse Cytomegalovirus Infection. *PLoS Pathog* 12: e1005895.
23. Walton SM, Torti N, Mandaric S, Oxenius A (2011) T-cell help permits memory CD8(+) T-cell inflation during cytomegalovirus latency. *Eur J Immunol* 41: 2248-2259.
24. Snyder CM, Loewendorf A, Bonnett EL, Croft M, Benedict CA, et al. (2009) CD4+ T cell help has an epitope-dependent impact on CD8+ T cell memory inflation during murine cytomegalovirus infection. *J Immunol* 183: 3932-3941.
25. Verma S, Weiskopf D, Gupta A, McDonald B, Peters B, et al. (2015) Cytomegalovirus-Specific CD4 T Cells Are Cytolytic and Mediate Vaccine Protection. *J Virol* 90: 650-658.
26. Croft M (2010) Control of immunity by the TNFR-related molecule OX40 (CD134). *Annu Rev Immunol* 28: 57-78.
27. Rogers PR, Song J, Gramaglia I, Killeen N, Croft M (2001) OX40 promotes Bcl-xL and Bcl-2 expression and is essential for long-term survival of CD4 T cells. *Immunity* 15: 445-455.
28. Linch SN, McNamara MJ, Redmond WL (2015) OX40 Agonists and Combination Immunotherapy: Putting the Pedal to the Metal. *Front Oncol* 5: 34.
29. Baum PR, Gayle RB, 3rd, Ramsdell F, Srinivasan S, Sorensen RA, et al. (1994) Molecular characterization of murine and human OX40/OX40 ligand systems: identification of a human OX40 ligand as the HTLV-1-regulated protein gp34. *Embo j* 13: 3992-4001.
30. al-Shamkhani A, Birkeland ML, Puklavec M, Brown MH, James W, et al. (1996) OX40 is differentially expressed on activated rat and mouse T cells and is the sole receptor for the OX40 ligand. *Eur J Immunol* 26: 1695-1699.
31. Jonjic S, Mutter W, Weiland F, Reddehase MJ, Koszinowski UH (1989) Site-restricted persistent cytomegalovirus infection after selective long-term depletion of CD4+ T lymphocytes. *J Exp Med* 169: 1199-1212.
32. Welten SP, Redeker A, Toes RE, Arens R (2016) Viral Persistence Induces Antibody Inflation without Altering Antibody Avidity. *J Virol* 90: 4402-4411.
33. Casazza JP, Betts MR, Price DA, Precopio ML, Ruff LE, et al. (2006) Acquisition of direct antiviral effector functions by CMV-specific CD4+ T lymphocytes with cellular maturation. *J Exp Med* 203: 2865-2877.
34. van Leeuwen EM, Remmerswaal EB, Heemskerk MH, ten Berge IJ, van Lier RA (2006) Strong selection of virus-specific cytotoxic CD4+ T-cell clones during primary human cytomegalovirus infection. *Blood* 108: 3121-3127.

35. Pachnio A, Ciaurriz M, Begum J, Lal N, Zuo J, et al. (2016) Cytomegalovirus Infection Leads to Development of High Frequencies of Cytotoxic Virus-Specific CD4+ T Cells Targeted to Vascular Endothelium. *PLoS Pathog* 12: e1005832.
36. Jonjic S, Mutter W, Weiland F, Reddehase MJ, Koszinowski UH (1989) Site-restricted persistent cytomegalovirus infection after selective long-term depletion of CD4+ T lymphocytes. *J Exp Med* 169: 1199-1212.
37. Arens R, van Hall T, van der Burg SH, Ossendorp F, Melief CJ (2013) Prospects of combinatorial synthetic peptide vaccine-based immunotherapy against cancer. *Semin Immunol* 25: 182-190.
38. Redeker A, Welten SP, Arens R (2014) Viral inoculum dose impacts memory T-cell inflation. *Eur J Immunol* 44: 1046-1057.
39. Arens R, Wang P, Sidney J, Loewendorf A, Sette A, et al. (2008) Cutting edge: murine cytomegalovirus induces a polyfunctional CD4 T cell response. *J Immunol* 180: 6472-6476.
40. Arens R, Loewendorf A, Redeker A, Sierro S, Boon L, et al. (2011) Differential B7-CD28 costimulatory requirements for stable and inflationary mouse cytomegalovirus-specific memory CD8 T cell populations. *J Immunol* 186: 3874-3881.

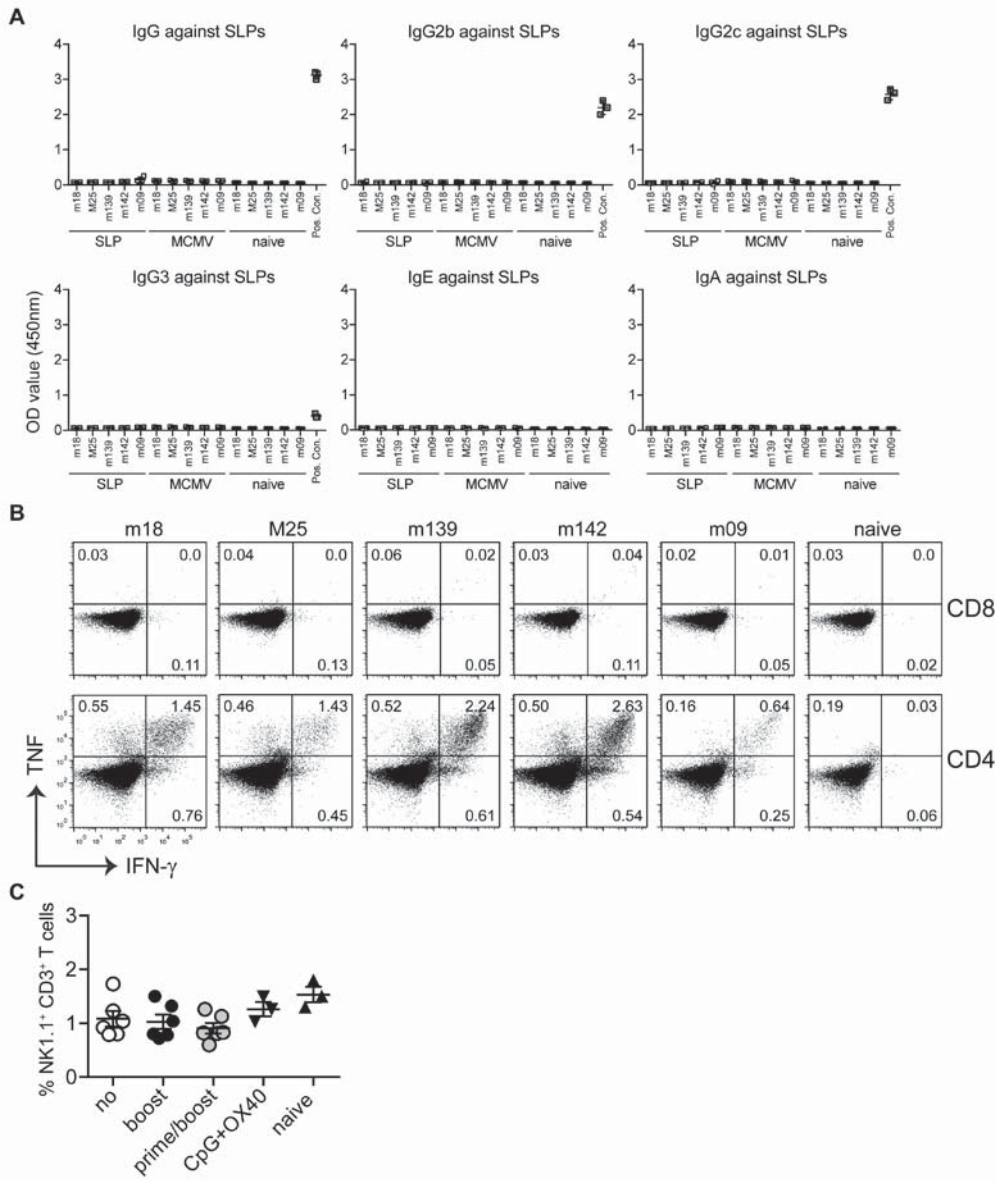
SUPPORTING INFORMATION

Supplementary Table 1. Depiction of the MHC class I and II peptide epitopes and SLPs used in this study.

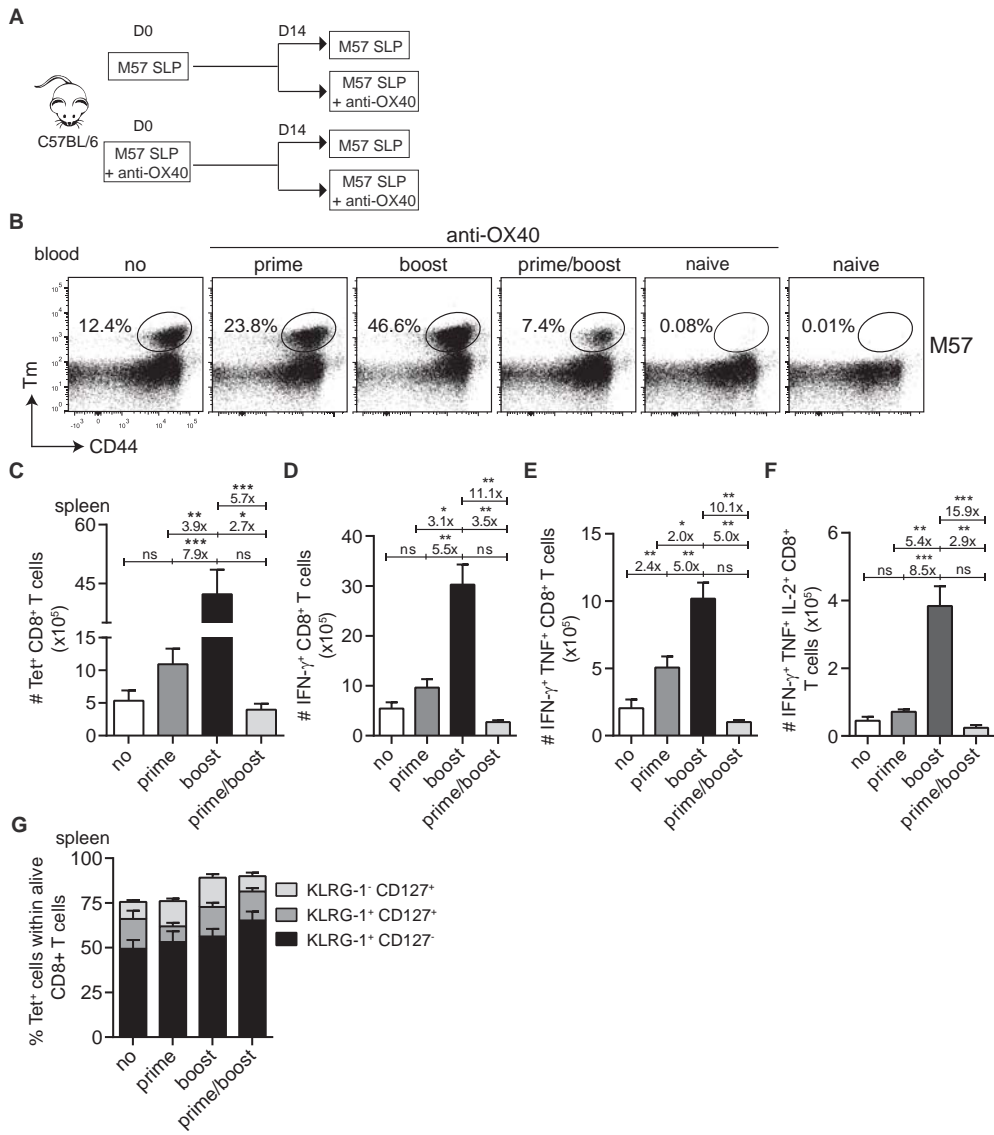
Mouse strain	Protein (ORF)	SLP sequence *	Epitope residues (aa)	MHC allele - restriction	Stage of expression	Inflation?	Human CMV Homologue
C57BL/6	m18	NERAKSPAAMTAEDE	872-886	I-A ^b	Immediate early gene	No	
C57BL/6	M25	NHLYETPISATAMVI	409-423	I-A ^b	UL25 family homologue,	No	UL25 (GF1)
C57BL/6	m139	TRPYRPRVCDASLS	560-574	I-A ^b	tegument protein US22 family homologue	No	US22
C57BL/6	m142	RSRYLTA^bAAAVTAVLQ	24-38	I-A ^b	US22 family homologue,	No	US26
C57BL/6	m09	GYLYYPSAGNSFDL	133-147	I-A ^b	Glycoprotein family,	Yes	
C57BL/6	M45	REDVVKHGIRNASFITGCSA	985-993	H-2-D ^b	Early gene	No	UL45
C57BL/6	M57	FPACGLSCLEFWQRVLQNS	816-824	H-2-K ^b	Early gene	No	UL57
C57BL/6	m139	VVLVGARGTVYGFCLLSND	419-426	H-2-K ^b	Early gene	Yes	US22
C57BL/6	M38	VTLISSPPMFRYPVNPVPGG	316-323	H-2K ^b	Early gene	Yes	UL38
C57BL/6	IE3	DKSRKYPARALEYKKNLPFR	416-423	H-2-K ^b	Immediate early gene	Yes	IE2

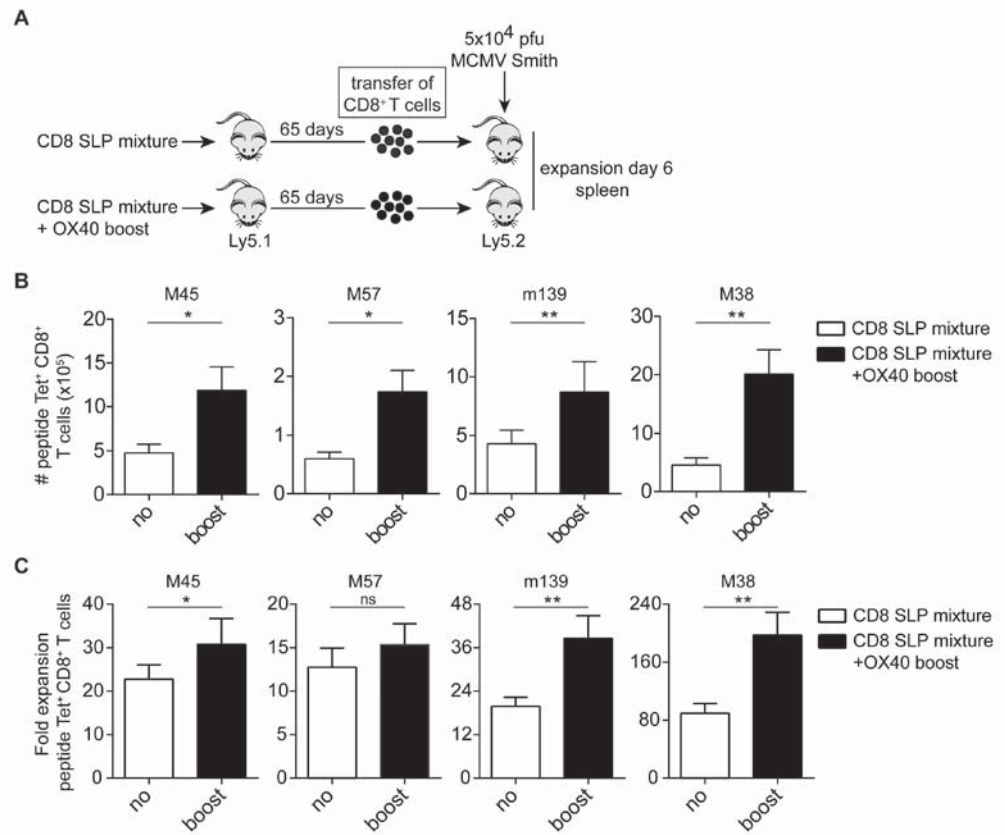
* Bold underlined amino acid (aa) residues within the SLP sequence indicate the CTL epitope.

Supplementary Figure 1. MHC class II SLP vaccines do not induce peptide-specific Abs and do not activate CD8⁺ T cells and NK cells. (A) At day 60 post booster MHC class II SLP vaccination and anti-OX40 mAb administration (i.p. during booster vaccination only) or MCMV infection serum samples were obtained from C57BL/6 mice. ELISA plates were coated with SLP and detection of peptide specific Ab (including IgG, various IgG subtypes, IgE and IgA) in the serum was assessed. To serve as a positive control, a peptide with known ability to induce antibodies and corresponding serum was used. Optical density values were measured at 450 nm. Each symbol represents an individual mouse. Mean value \pm SEM (n=3-4 mice per group) is indicated. (B) At day 8 following booster MHC class II SLP vaccination and anti-OX40 mAb administration the intracellular cytokine production by CD8⁺ and CD4⁺ T cells was determined after restimulation with long peptide (5 μ g/ml) for 8 h and of which the last 6 h in presence of brefeldin A at 37°C. Representative plots show percentages of IFN- γ versus TNF production of CD8⁺ and CD4⁺ T cells of each peptide specific population in spleen. No peptide stimulation and naive mice were used as negative controls. IFN- γ and TNF reactivity was only observed in CD4⁺ T cells. Experiments were performed twice with similar outcome (n=5 mice per group). (C) Potential NK cell activation following vaccination with combinatorial MHC class II SLP vaccines and different doses of anti-OX40 mAb administration was investigated. At day 7 after booster vaccination cell surface staining for NK cell marker NK1.1 was performed in blood. No NK cell proliferation was triggered by the vaccines. Each symbol represents an individual mouse. Mean value \pm SEM (n=3-6 mice per group) is indicated. ▶

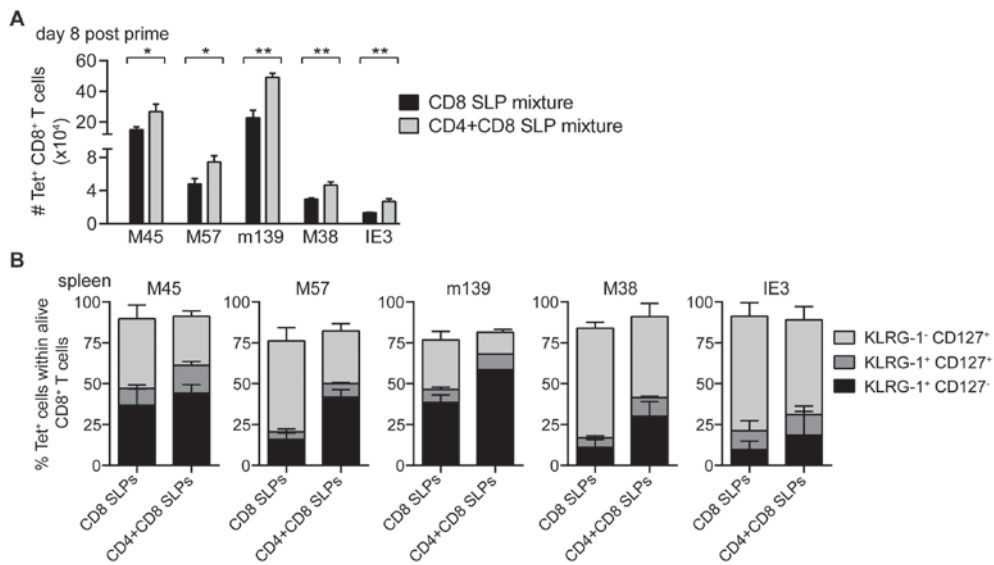


Supplementary Figure 2. Agonistic OX40 mAb administration during booster MHC class II-restricted SLP vaccination provokes accrual of the vaccine-induced CD4⁺ T cell responses. (A) Scheme of the experimental procedure and the vaccination timeline. Wild type C57BL/6 mice were vaccinated (i) s.c with M57₈₁₆₋₈₂₄ MHC class I SLP alone or (ii) with M57₈₁₆₋₈₂₄ MHC class I SLP (s.c.) along with anti-OX40 mAb (i.p.). 2 weeks after prime vaccination, mice from group (i) and (ii) were divided into two groups respectively and a booster immunization was administered. Half mice received only M57₈₁₆₋₈₂₄ SLP and the other half were injected anti-OX40 mAb in addition to M57₈₁₆₋₈₂₄ SLP. (B) Percentages and (C) total size of the M57₈₁₆₋₈₂₄ SLP vaccine induced CD8⁺ T cells from each group was measured by tetramer staining in blood and spleen at day 7 and 8 after booster vaccination respectively. (D) Total single (IFN-γ⁺), (E) double (IFN-γ⁺TNF⁺) and (F) triple (IFN-γ⁺TNF⁺IL-2⁺) cytokine producers of vaccine-antigen-specific CD8⁺ T cell populations measured in spleen at day 8 post booster vaccination with M57₈₁₆₋₈₂₄ SLP and different doses of anti-OX40 mAb. Fold differences among each population is shown (E) Phenotypic profile of the SLP vaccine-induced CD8⁺ T cells in spleen at day 8 post booster vaccination. Data represent mean values, and are representative of three independent experiments (n=5 mice per group). *, P< 0.05; **, P< 0.01; ***, P< 0.001; ns, not significant. ▶

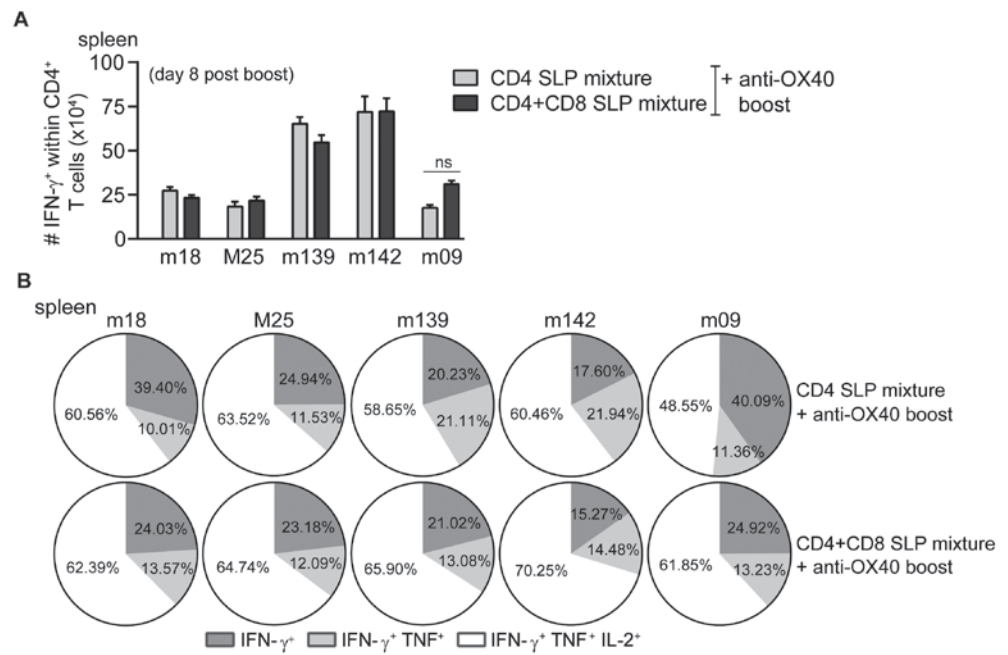




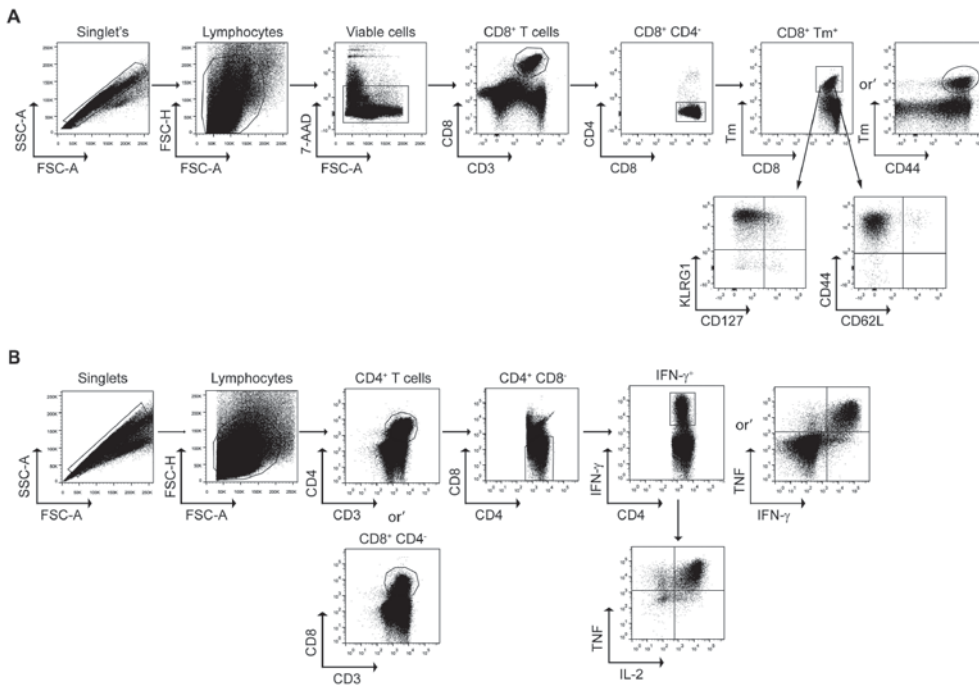
Supplementary Figure 3. OX40 activation during booster combinatorial MHC class I SLP vaccination improves the secondary expansion potential of the memory vaccine-elicited CD8⁺ T cells. (A) Scheme of the experimental setup and the vaccination schedule followed. Briefly, CD45.1⁺ congenic mice were vaccinated s.c. in a prime boost vaccination schedule with a mixture of all 5 MHC class I SLPs solely or along with anti-OX40 mAb (one dose administered only during booster vaccination). 65 days post booster vaccination splenic CD8⁺ T cells were negatively enriched and 2×10^6 total CD8⁺ T cells were retro-orbitally transferred into naive C57BL/6 recipient mice. Recipient mice were subsequently challenged (i.p.) with 5×10^4 PFU MCMV and 6 days later the expansion capacity of the donor's CD45.1⁺ Tet⁺ CD8⁺ T cells was measured by tetramer staining in spleen. (B) Fold expansion of the donor's antigen-specific CD8⁺ T cells transferred was measured in spleen at day 6 after virus challenge. Data represents mean values + SEM, and are representative of 2 independent experiments (n= 9 mice per group). *, P < 0.05; **, P < 0.01; ns, not significant.



Supplementary Figure 4. Inclusion of CD4⁺ T cell responses during prime vaccination with combinatorial MHC class I SLP vaccines improves the magnitude of the vaccine-induced CD8⁺ T cells. C57BL/6 mice were vaccinated s.c. with a mixture of all MHC class I SLPs or with a combination of all MHC class I and II SLPs (S1 Table). **(A)** Graph shows total numbers of the tetramer epitope-specific CD8⁺ T cells responses detected in spleen at day 8 post prime vaccination. **(B)** Phenotypic traits of the vaccine antigen-specific CD8⁺ T cells in spleen at day 8 post prime vaccination. Note that anti-OX40 mAb was not injected during prime vaccination. Data represents mean values (n=5 mice per group), and are representative of 3 independent experiments. *, P < 0.05; **, P < 0.01.



Supplementary Figure 5. The magnitude and polyfunctionality of the CD4⁺ T cell responses elicited by booster combinatorial MHC class II SLP vaccination is not altered by the presence of CD8⁺ T cell responses. (A) Total size of antigen-specific CD4⁺ T cell population measured in spleen at day 8 post booster combinatorial MHC class II SLP vaccination (light grey bars) or a mixture of both MHC class II and MHC class I SLPs (back bars). Anti-OX40 mAb was administered in both groups during booster vaccination. (B) Cytokine profile of the vaccine induced CD4⁺ T cells in spleen at day 8 post booster vaccination. Same group description as above. Data represents mean values (n=5 mice per group), and are representative of 3 independent experiments. ns, not significant.



Supplementary Figure 6. Flow cytometry gating strategy. (A) Representative plots show the gating strategy to detect MHC class I tetramer positive cells in blood and spleen. In sequential gating, cells were first gated for singlets (FSC-A vs. SSC-A), then for lymphocytes (FSC-A vs. FSC-H), followed by viability (FSC-A vs. 7-AAD). Next, live cells were analysed for the expression of CD3 and CD8 while cells positive for CD4 were excluded. MHC class I tetramer positive cells (CD8 vs. Tm) were analysed for the expression of KLRG1, CD44, CD127 and CD62L surface markers. (B) Gating strategy for intracellular cytokine staining to detect CD4⁺ and CD8⁺ vaccine elicited T cell responses. Utilizing a sequential gating analysis, cells were initially gated for singlet's (FSC-A vs. SSC-A) and then for lymphocytes (FSC-A vs. FSC-H). Next, cells were analysed for the expression of CD3 and CD4 while cells positive for CD8 were excluded. IFN- γ producing CD4⁺ T cells were further analysed for expression of TNF and IL-2. A similar gating strategy was followed to identify CD8⁺ T cell responses.

