

Lupus disks with faint CO isotopologues: low gas/dust or high carbon depletion?

A. Miotello¹, E. F. van Dishoeck^{1,2}, J. P. Williams³, M. Ansdell³, G. Guidi⁴, M. Hogerheijde¹, C. F. Manara⁵,
M. Tazzari^{6,7}, L. Testi^{4,6,7}, N. van der Marel³, and S. van Terwisga¹

¹ Leiden Observatory, Leiden University, Niels Bohrweg 2, 2333 CA Leiden, The Netherlands
e-mail: miotello@strw.leidenuniv.nl

² Max-Planck-Institut für extraterrestrische Physik, Giessenbachstraße, 85748 Garching, Germany

³ Institute for Astronomy, University of Hawaii at Manoa, 2680 Woodlawn dr., Honolulu, HI 96822, USA

⁴ INAF/Osservatorio Astrofisico di Arcetri, Largo E. Fermi 5, 50125 Firenze, Italy

⁵ Scientific Support Office, Directorate of Science, European Space Research and Technology Centre (ESA/ESTEC), Keplerlaan 1,
2201AZ Noordwijk, The Netherlands

⁶ European Southern Observatory, Karl-Schwarzschild-Str. 2, 85748 Garching bei München, Germany

⁷ Excellence Cluster “Universe”, Boltzmannstr. 2, 85748 Garching bei München, Germany

Received 19 August 2016 / Accepted 5 December 2016

ABSTRACT

Context. An era has started in which gas and dust can be observed independently in protoplanetary disks, thanks to the recent surveys with the Atacama Large Millimeter/sub-millimeter Array (ALMA). The first near-complete high-resolution disk survey in both dust and gas in a single star-forming region has been carried out in Lupus, finding surprisingly low gas-to-dust ratios.

Aims. The goal of this work is to fully exploit CO isotopologue observations in Lupus, comparing them with physical-chemical model results, in order to obtain gas masses for a large number of disks and compare gas and dust properties.

Methods. We have employed the grid of physical-chemical models presented previously to analyze continuum and CO isotopologue ($^{13}\text{CO } J = 3-2$ and $\text{C}^{18}\text{O } J = 3-2$) observations of Lupus disks, including isotope-selective processes and freeze-out. We also employed the ALMA ^{13}CO -only detections to calculate disk gas masses for a total of 34 sources, which expands the sample of 10 disks reported earlier, where C^{18}O was also detected.

Results. We confirm that overall gas-masses are very low, often lower than $1M_J$, when volatile carbon is not depleted. Accordingly, global gas-to-dust ratios are much lower than the expected interstellar-medium value of 100, which is predominantly between 1 and 10. Low CO-based gas masses and gas-to-dust ratios may indicate rapid loss of gas, or alternatively chemical evolution, for example, through sequestering of carbon from CO to more complex molecules, or carbon locked up in larger bodies.

Conclusions. Current ALMA observations of ^{13}CO and continuum emission cannot distinguish between these two hypotheses. We have simulated both scenarios, but chemical model results do not allow us to rule out one of the two, pointing to the need to calibrate CO-based masses with other tracers. Assuming that all Lupus disks have evolved mainly as a result of viscous processes over the past few Myr, the previously observed correlation between the current mass accretion rate and dust mass implies a constant gas-to-dust ratio, which is close to 100 based on the observed $M_{\text{disk}}/M_{\text{acc}}$ ratio. This in turn points to a scenario in which carbon depletion is responsible for the low luminosities of the CO isotopologue line.

Key words. protoplanetary disks – astrochemistry – surveys – circumstellar matter – submillimeter: general

1. Introduction

Protoplanetary disks have been extensively studied in the past decades with infrared (IR) surveys (Haisch et al. 2001; Hernández et al. 2007; Evans et al. 2009). Furthermore, several attempts have been carried out to study the structure and bulk content of disks independently in gas and dust (see, e.g., Thi et al. 2001; Panić et al. 2008, 2009; Andrews et al. 2012; Boneberg et al. 2016; Andrews 2015, as a review). However, these studies have been limited to small, not statistically significant samples of mostly Herbig disks, often with partially unresolved and limited-sensitivity observations. The Atacama Large Millimeter/sub-millimeter Array (ALMA) now has the sensitivity and resolving power needed to image large numbers of disks in continuum and molecular lines in a modest amount of time. The first near-complete survey of protoplanetary disks in both dust and gas with ALMA in a single star-forming region has

been carried out in Lupus (Ansdell et al. 2016). For the first time, about 80 disks in the same region have been observed at a resolution of $0.3''$ (22–30 au radius for a distance of 150–200 pc). At the same time, the unprecedented sensitivity of ALMA allowed detection of a fraction of these disks in the faint CO isotopologue lines with just one minute observations per source. Moreover, stellar properties and mass accretion rates have been estimated from VLT/X-shooter spectra for the same sample, allowing us to build a complete picture for the Lupus sources (Alcalá et al. 2014, 2017; Manara et al. 2016). More recently, other star-forming regions have been surveyed with similar aims by ALMA, such as Chameleon I (Pascucci et al. 2016) and the more evolved Upper Scorpius region (Barenfeld et al. 2016). An era has started in which gas and dust can be observed independently in protoplanetary disks.

Together with the physical structure of the gas, the total gas mass is one of the crucial properties needed to describe the disk

evolution. Starting from the process of grain-growth, planetesimal formation sensitively depends on the physical structure of the gaseous disk (see, e.g., [Armitage 2011](#), for a review). For this reason, it is crucial to directly observe the bulk of the gas in protoplanetary disks. CO lines are commonly used to estimate the total disk gas mass. In particular, less abundant CO isotopologues, which become optically thick deeper in the disk than ^{12}CO , can trace the bulk gas mass present in the molecular layer ([van Zadelhoff et al. 2001](#); [Dartois et al. 2003](#)).

The main caveat when employing CO isotopologues as mass tracers is related to the conversion of the observed CO mass into total gas mass. There are various arguments why CO/H_2 is lower than the canonical value of 10^{-4} ([Aikawa et al. 1997](#)) when averaged over the entire disk, as indicated by early observations ([Dutrey et al. 1997](#)). Processes such as CO photodissociation in the upper layers and freeze-out in the disk midplane have been identified as the main cause ([van Zadelhoff et al. 2001](#); [Aikawa et al. 2002](#)), and these processes are well understood from a molecular physics point of view. They are included in all recent physical-chemical disk models ([Hollenbach et al. 2005](#); [Gorti & Hollenbach 2009](#); [Nomura et al. 2009](#); [Woitke et al. 2009](#); [Bruderer et al. 2012](#); [Bruderer 2013](#)). When less abundant CO isotopologues are involved, the well-understood process of isotope-selective photodissociation, which destroys relatively more C^{18}O , needs to be taken into account ([Visser et al. 2009](#); [Miotello et al. 2014, 2016](#)).

[Williams & Best \(2014\)](#) have shown that by combining multiple CO isotopologues, such as ^{13}CO and C^{18}O , and accounting in a parametrized way for photodissociation and freeze-out, it is possible to estimate disk gas masses, regardless of the disk properties. Traditionally, then a constant interstellar medium (ISM)-like overall volatile carbon abundance is used to calculate the total H_2 mass ($X_{\text{C}} = [\text{C}]/[\text{H}] = 1.35 \times 10^{-4}$). This assumption may be incorrect, however, as high levels of carbon depletion have been inferred for at least one disk. This is the case of TW Hya, the closest and probably best-studied disk, for which the fundamental rotational transition of hydrogen deuteride (HD) has been observed by the *Herschel* Space Observatory ([Bergin et al. 2013](#)). Comparing these data with SMA C^{18}O data, [Favre et al. \(2013\)](#) found that a carbon depletion of two orders of magnitude was needed in order to recover the HD-based disk mass determination from C^{18}O . This result has been confirmed by physical-chemical modeling of the source, which was able to reproduce, among other lines, spatially resolved ALMA data and atomic carbon lines ([Kama et al. 2016](#); [Schwarz et al. 2016](#)). This result is interpreted as chemical evolution, that is, carbon has been turned from CO into more complex species either in the gas or in the ice ([Aikawa et al. 1996](#); [Bergin et al. 2014](#); [Drozdovskaya et al. 2015](#); [Eistrup et al. 2016](#)), or alternatively, as a grain growth effect, carbon has been locked up in large icy bodies that no longer participate in the gas-phase chemistry ([Du et al. 2015](#); [Kama et al. 2016](#)), resulting in less bright CO lines. This hints at the possible existence of a class of disks where CO is not the main carbon reservoir.

In this paper we apply the detailed modeling technique developed by [Miotello et al. \(2016\)](#) to the ALMA ^{13}CO and C^{18}O Lupus observations. Our modeling procedure allows us to also employ the ^{13}CO -only detections to provide a disk gas mass determinations for a total of 34 disks, which extends and refines the initial analysis presented in [Ansdell et al. \(2016\)](#) for only 10 disks, for which both ^{13}CO and C^{18}O lines are available. Our derived gas masses are generally very low, often lower than the mass of Jupiter, consistent with [Ansdell et al. \(2016\)](#). This translates into very low global gas-to-dust ratios that often approach

unity (Sect. 5). Low CO-based gas masses and gas-to-dust ratios may indicate rapid disk evolution, which is usually taken to be a loss of gas. An alternative is that the CO abundance may be low, as discussed above. Since current data cannot distinguish between these scenarios, we have simulated both of them, but model results do not allow us to rule out one of the two. Future ALMA observations of more complex tracers are needed to calibrate CO-based masses. Alternatively, [Manara et al. \(2016\)](#) and [Rosotti et al. \(2017\)](#) have proposed a method that allows tracing the gaseous disk component independently of chemistry by exploiting the availability of dust disk mass and mass accretion rate measurement. The implications of these data are discussed in Sect. 5.3.

2. ALMA observations

Lupus is one of the youngest (3 ± 2 Myr; [Alcalá et al. 2014](#)) and closest complexes and is composed of four main star-forming regions (Lupus I-IV, see [Comerón 2008](#), for a review). Lupus III is located at a distance of ~ 200 pc to the Sun, while Lupus I, II, and IV are at ~ 150 pc.

The sample employed for this paper was observed in the Cycle 2 Lupus ALMA Disk Survey, it is composed of 88 objects with $0.1 < M_{\star}/M_{\odot} < 2.84$ and is presented in detail by [Ansdell et al. \(2016\)](#). The observations were obtained on 2015 June 14 and 15. The disks were observed in continuum ($890 \mu\text{m}$) and CO isotopologue line emission (^{13}CO and C^{18}O 3–2 transitions). More details on the observational settings and data reduction are presented in [Ansdell et al. \(2016\)](#). Of the 88 targets, 34 were detected in ^{13}CO , while only 10 were detected in C^{18}O at more than a 3σ level.

3. Model

The observed CO isotopologue fluxes were compared with the model results presented in [Miotello et al. \(2016\)](#). These models are computed with the physical-chemical code DALI, which has been tested extensively with benchmark test problems ([Bruderer et al. 2012](#); [Bruderer 2013](#)) and against observations ([Bruderer et al. 2012, 2014](#); [Fedele et al. 2013](#)). The dust temperature, T_{dust} , and local continuum radiation field from UV to mm wavelengths are calculated by a 2D Monte Carlo method, given an input disk density structure and a stellar spectrum. Then the chemical composition is obtained with a time-dependent chemical network simulation (1 Myr). Finally, the gas temperature, T_{gas} , is obtained from an iterative balance between heating and cooling processes until a self-consistent solution is found, and the non-LTE excitation of the molecules is computed. The final outputs are spectral image cubes created with a raytracer. As in [Miotello et al. \(2014\)](#) and in [Miotello et al. \(2016\)](#), a complete treatment of CO isotope-selective processes is included.

The grid by [Miotello et al. \(2016\)](#) is composed of around 800 disk models that have been run for a range of realistic disk and stellar parameters. Disk masses varied between $10^{-5} M_{\odot}$ and $10^{-1} M_{\odot}$, and stellar luminosities were set to $1 L_{\odot}$ (plus excess UV for mass accretion rates of $10^{-8} M_{\odot} \text{yr}^{-1}$) for T Tauri disks and $10 L_{\odot}$ for Herbig disks (see Table 1 in [Miotello et al. 2016](#)). Coupling of the UV excess to an accretion rate is merely a convenient prescription to obtain a value for the UV luminosity, which controls the thermal and chemical structure of the gas, including the number of CO dissociating photons ([Kama et al. 2016](#)). It should not be taken here as a measure for disk evolution timescales. A consistent description of the accretion process and disk evolution is beyond the scope of our models. Line

luminosities for different CO isotopologues and transitions have been ray traced. The majority of Lupus sources detected in both CO isotopologues have stellar luminosity L_\star between $0.1 L_\odot$ and $1 L_\odot$ (Alcala et al. 2017). As a check, a smaller grid of T Tauri disk models with $L_\star = 0.1 L_\odot$ and excess UV for mass accretion rates of $10^{-8} M_\odot \text{ yr}^{-1}$, which generates about $0.2 L_\odot$ of UV accretion luminosity, was run to reproduce the extreme cases. However, we found that CO isotopologue line luminosities are reduced only up to 25%. As this is well within the uncertainties on the CO-based gas mass derivations by Miotello et al. (2016), the original grid of T Tauri disk models with $L_\star = 1 L_\odot$ was used for the analysis.

4. Results

4.1. Dust masses revisited

Continuum observations at sub-mm wavelengths are traditionally employed to trace large (mm-sized) grains that are present in the cold midplane of disks. Since the bulk of the dust mass is expected to be retained in large grains, their thermal emission is generally used to derive disk dust masses, following

$$M_{\text{dust}} = \frac{F_\nu d^2}{\kappa_\nu B_\nu(T_{\text{dust}})}. \quad (1)$$

The sub-mm flux F_ν is directly related to the dust mass M_{dust} under the assumption that the emission is optically thin and in the Rayleigh-Jeans regime (Beckwith et al. 1990). Equation (1) has been employed by Ansdell et al. (2016) to derive dust masses for the Lupus disks, assuming a dust opacity $\kappa_\nu = 3.4 \text{ cm}^2 \text{ g}^{-1}$ at 340 GHz and a characteristic dust temperature $T_{\text{dust}} = 20 \text{ K}$. This first-order analysis does not account for the effects of disk inclination and temperature variation on the spatially integrated dust emission. However, the inclination angle i has been derived for many of the Lupus disks from continuum data by Ansdell et al. (2016) and Tazzari et al. (in prep.).

In this work we exploit the results obtained by Miotello et al. (2016) with DALI continuum radiative transfer to estimate Lupus disks dust masses, accounting for the disk inclination and temperature structure. The assumed dust opacity, $\kappa_\nu = 4.3 \text{ cm}^2 \text{ g}^{-1}$ at 340 GHz, is the standard value in DALI (Weingartner & Draine 2001; Bruderer 2013) and is slightly higher than that used by Ansdell et al. (2016). Our models assume that the dust surface density distribution follows a radial power-law with an exponential taper and a Gaussian distribution in the vertical direction. Two dust populations are considered: large (mm-sized) grains are settled toward the midplane, and small (sub- μm to μm -sized) grains are coupled to the gas and present in the disk atmosphere (see Miotello et al. 2016, for more detail). Finally, grain-growth and migration are not included in the models, except in an ad hoc fashion by including small and large grains.

The continuum and line emission obtained with the disk models presented in Miotello et al. (2016) were both ray-traced assuming disk inclinations of 10° and 80° . Submillimeter fluxes are not expected to vary significantly for intermediate inclinations, that is, up to 70° (Beckwith et al. 1990). On the other hand, line intensities and dust emission are extremely modified in the rarer case of edge-on disks, that is, with an inclination close to 90° . Lupus disks with $i < 70^\circ$ or with unknown inclination are compared with models where $i = 10^\circ$, elsewhere we employ models with $i = 80^\circ$.

The medians of the simulated continuum luminosities at $890 \mu\text{m}$ can be calculated for different dust masses (Fig. 1). They

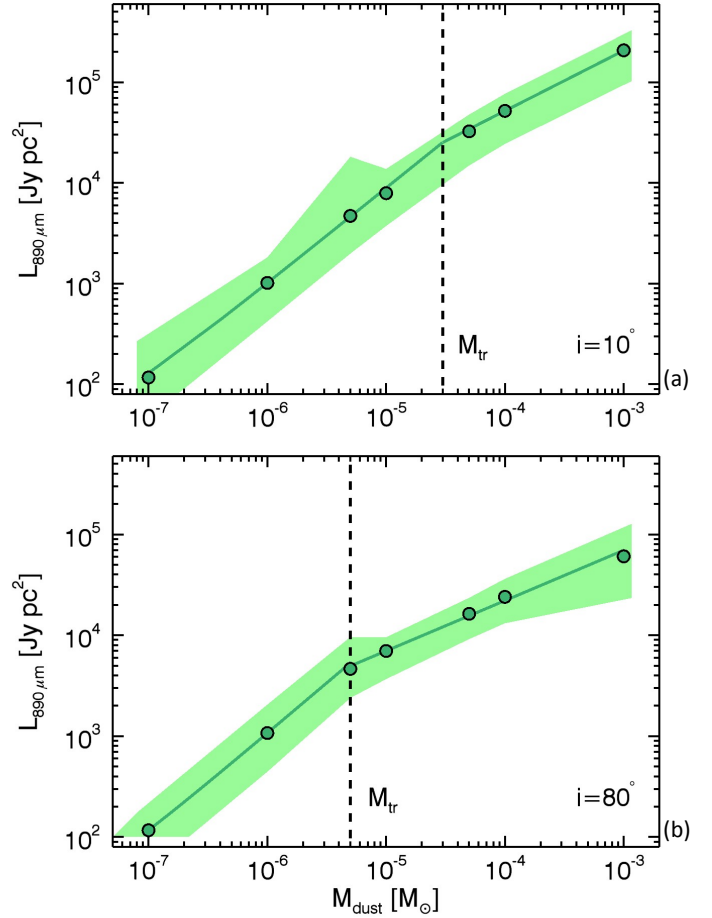


Fig. 1. Medians of the simulated T Tauri continuum luminosities at $890 \mu\text{m}$ for different mass bins, presented by the green dots for disk inclinations of 10° and 80° in panels **a)** and **b)**, respectively. The solid lines show the fit function of the $890 \mu\text{m}$ continuum luminosity as a function of the disk mass (see Eq. (2)). The dotted black lines present the transition mass between the two dependencies of the luminosity on the mass expressed in Eq. (2). The colored bands show the maximum and minimum simulated continuum luminosities for the different mass bins.

can be fitted by simple functions of the disk dust mass and be employed to estimate Lupus disk masses. In particular, the continuum luminosity at $890 \mu\text{m}$ $L_{0.9 \text{ mm}}$ can be expressed by

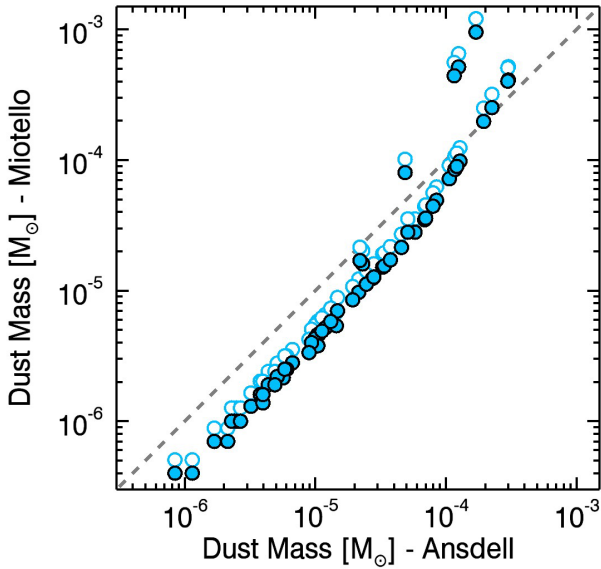
$$L_{0.9 \text{ mm}} = \begin{cases} a + b \cdot M_{\text{dust}}^c & M_{\text{dust}} < M_{\text{tr}} \\ d + e \cdot M_{\text{dust}}^f & M_{\text{dust}} > M_{\text{tr}}. \end{cases} \quad (2)$$

The coefficients a, b, c, d, e, f , and M_{tr} are reported in Table 1 for disk inclinations of both 10° and 80° . For dust masses below the transition mass M_{tr} the dependence is linear, while for higher masses it is sublinear. This reflects the fact that the dust emission becomes optically thick for high enough dust masses, even at $890 \mu\text{m}$. This occurs at lower masses for edge-on disks, as the high inclination enhances the dust column density.

The Lupus disk dust masses derived in this work are generally a factor of a few lower than the estimates given by Ansdell et al. (2016; see Fig. 2). In particular, between $5 \times 10^{-7} M_\odot$ and $3 \times 10^{-5} M_\odot$, dust masses derived by Ansdell et al. (2016) are a factor of 2.2 higher than those estimated by this analysis (1.7 if we correct for the dust opacity difference at 340 GHz). For disks with dust masses higher than $M_{\text{tr}} = 3 \times 10^{-5} M_\odot$, the derivations obtained with the two methods become similar because the emission becomes marginally optically

Table 1. Polynomial coefficients a, b, c, d, e, f , and M_{tr} , in Eq. (2).

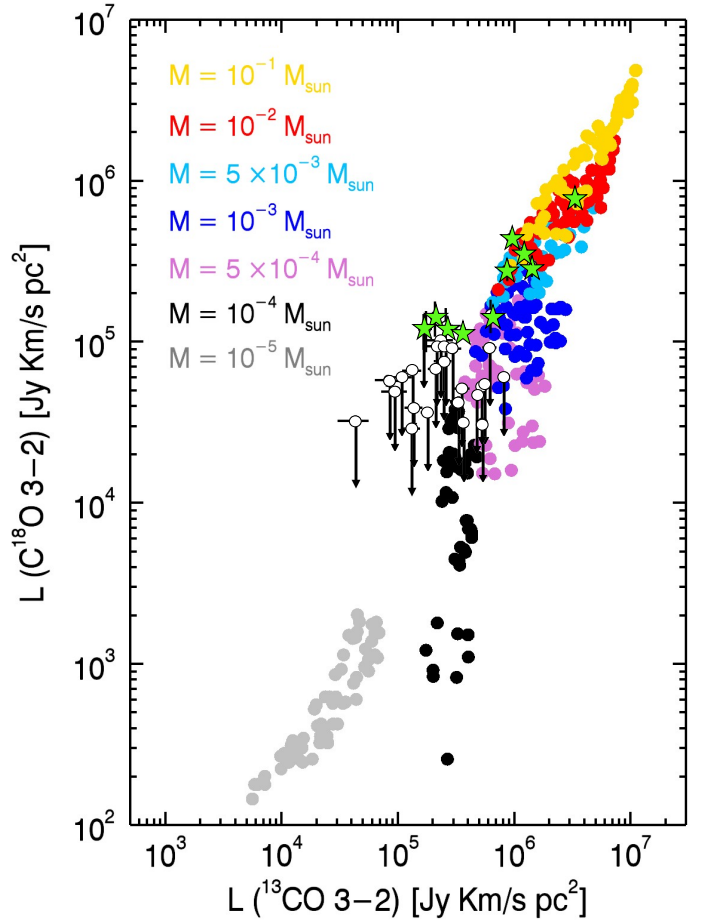
	$i = 10^\circ$	$i = 80^\circ$
a	17	10
b	5×10^8	10^9
c	0.95	1.0
d	76	40
e	1.3×10^7	2.2×10^6
f	0.6	0.5
$M_{\text{tr}}[M_\odot]$	3×10^{-5}	5×10^{-6}


Fig. 2. Disk dust masses derived in this work compared with the dust masses obtained by Ansdell et al. (2016). Full symbols show the current model results. Empty circles present mass estimates corrected for the dust opacity difference at 340 GHz between the two studies.

thick. This effect is only considered by our models and leads to higher mass determinations. Finally, a bimodality can be seen in Fig. 2, with six points being displaced from the main trend. These represent the highly inclined disks ($i > 70^\circ$) with dust masses higher than $M_{\text{tr}} = 5 \times 10^{-6} M_\odot$. For the most massive of these sources, the dust masses derived in this work are generally a factor of a few higher than the estimates given by Ansdell et al. (2016). The dust masses derived for the highly inclined disks are $M_{\text{dust}} = 9.6 \times 10^{-4}$, 5.2×10^{-4} , 4.4×10^{-4} , 8.0×10^{-5} , 1.7×10^{-5} , 1.6×10^{-5} , 7.0×10^{-6} , 3.4×10^{-6} , and $2.2 \times 10^{-6} M_\odot$ for J16083070-3828268, MY Lup, J16070854-3914075, Sz 133, J16090141-3925119, Sz 84, Sz 74, J16102955-3922144, and J16070384-3911113, respectively.

4.2. Gas masses

Measuring disk gas masses is essential for understanding disk evolution up to the formation of planetary systems. The aim of this analysis is to employ the CO isotopologue lines observed in Lupus for deriving gas masses for a statistically significant number of disks. The ^{13}CO and C^{18}O model results shown by Miotello et al. (2016) can be presented in the same way as done by Williams & Best (2014) and be compared with Lupus observations (Fig. 3). As explained by Miotello et al. (2016), the two sets of model results differ throughout the whole disk mass range because of a temperature effect. Williams & Best (2014)


Fig. 3. C^{18}O (3–2) vs. ^{13}CO (3–2) line luminosities. The color-coded dots show the line luminosities simulated by the T Tauri models in the Miotello et al. (2016) grid. The Lupus observations are overplotted. The disks detected in both isotopologues are shown with green stars, while the C^{18}O non-detections are presented with empty circles.

find a wider range of CO luminosities because they parameterize a wider range of temperatures than Miotello et al. (2016) find in their models. Miotello and collaborators compute the disk temperature structure through full radiative transfer. Furthermore, the divergence is maximized in the lower mass regime where the implementation of isotope-selective processes reduces C^{18}O line intensities compared with the results by Williams & Best (2014). The same disk mass model results cover a limited region of the line luminosity-luminosity space. Lupus disks that are detected in both isotopologues are presented in Fig. 3 with green stars, while C^{18}O non-detections are shown with white circles as upper limits on the y direction. This plot can only be used to derive disk masses when C^{18}O is also detected. For Lupus, this is the case for only 10 sources. Four of them are not reproduced by any of our models, presenting either lower ^{13}CO and regular C^{18}O luminosities, or regular ^{13}CO and higher C^{18}O luminosities (see Fig. 3). This shows that the current model grid may not apply to all disks, but a source-by-source detailed modeling may be needed. Knowledge about disk properties such as the radial extent and vertical structure would help to predict the line fluxes with higher confidence.

For disks that have been detected in ^{13}CO , but not in C^{18}O (henceforth, ^{13}CO -only detections), ^{13}CO alone can only be employed as a mass tracer when its emission is optically thin. Similarly to Miotello et al. (2016), the median of the ^{13}CO and

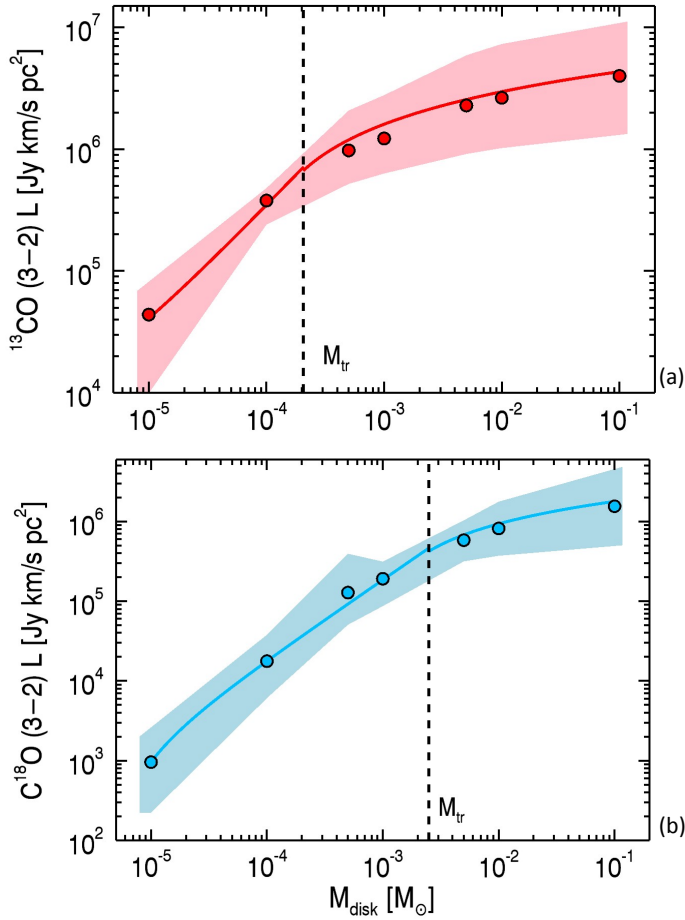


Fig. 4. Medians of the ^{13}CO (3–2) and C^{18}O (3–2) simulated T Tauri line luminosities for different mass bins, presented with red and blue dots in panels **a**) and **b**), respectively ($i = 10^\circ$). The red and blue lines show the fit function of the line luminosity as a function of disk mass. The dotted black lines present the transition mass between the linear and the logarithmic dependence of the line luminosity on the mass (see Eq. (3)). The colored bands show the maximum and minimum simulated line luminosities for the different mass bins.

C^{18}O $J = 3-2$ simulated line luminosities, rather than $J = 2-1$, are expressed by fit functions of the disk mass:

$$L_y = \begin{cases} A_y + B_y \cdot M_{\text{gas}} & M_{\text{gas}} \leq M_{\text{tr}} \\ C_y + D_y \cdot \log_{10}(M_{\text{gas}}) & M_{\text{gas}} > M_{\text{tr}}, \end{cases} \quad (3)$$

where $y = 13$ or 18 , for ^{13}CO and C^{18}O , respectively. For low-mass disks, the line luminosity has a linear dependence on the disk mass, while for more massive disks the trend is logarithmic because of the optical depth. The transition point M_{tr} is different for the two isotopologues because ^{13}CO becomes optically thick at lower column densities than C^{18}O . The polynomial coefficients A_y , B_y , C_y , and D_y , as well as the transition masses M_{tr} , are reported in Table 2 for disk models with inclination angle $i = 10^\circ$ and $i = 80^\circ$. The fit functions are shown in Fig. 4 with red and blue lines for ^{13}CO and C^{18}O , respectively.

Interestingly, all the ^{13}CO -only detections fall in the region of panel (a) where the dependence is linear, that is, for $M_{\text{disk}} < M_{\text{tr}}$ (Fig. 6). Accordingly, we can use the fit function presented in Eq. (3) to calculate the gas masses of these sources, as ^{13}CO is optically thin for the observed range of luminosities, which is confirmed by the absence of C^{18}O emission. The uncertainties on

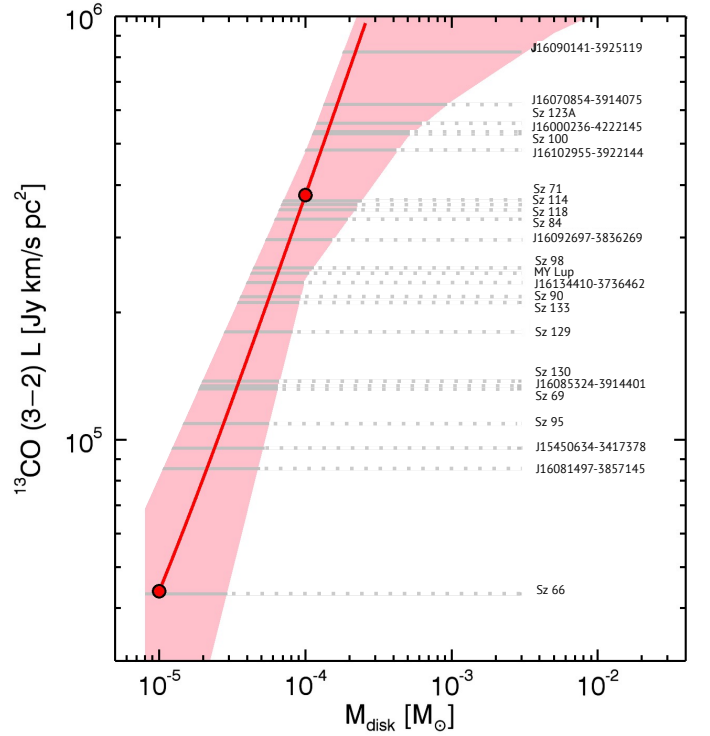


Fig. 5. Zoom of Fig. 4 top: medians of the ^{13}CO (3–2) simulated line luminosities for different mass bins, presented with red dots in the region where the luminosity dependence on mass is linear (see Eq. (3)). The red line shows the fit function of the line luminosity as a function of disk mass. The ^{13}CO -only detections are shown with gray dashed lines. The pink band shows the maximum and minimum simulated line luminosities.

Table 2. Polynomial coefficients A_y , B_y , C_y , and D_y , in Eq. (3).

	$i = 10^\circ$	$i = 80^\circ$
A_{13}	6.707×10^3	-1.182×10^4
B_{13}	3.716×10^9	3.110×10^9
C_{13}	6.066×10^6	5.945×10^6
D_{13}	1.441×10^6	1.460×10^6
$M_{\text{tr}}[M_\odot]$	2×10^{-4}	2×10^{-4}
A_{18}	-9.006×10^2	-7.972×10^2
B_{18}	1.859×10^8	1.120×10^8
C_{18}	2.653×10^6	2.581×10^6
D_{18}	8.500×10^5	8.900×10^5
$M_{\text{tr}}[M_\odot]$	2.5×10^{-3}	3.0×10^{-3}

the gas mass determinations are defined by the shadowed region in Fig. 5 (which is a zoom of Fig. 4), which covers the range of line luminosities simulated by the grid of models for different mass bins. Similarly, we can employ this line luminosity-mass relation to derive mass upper limits for disks that are undetected in both CO isotopologues. The disk mass determinations together with the calculated upper limits are presented in Table 3 and are shown in the middle panel of Fig. 6. Total gas masses are generally low, often lower than $1 M_{\text{Jup}}$. The implications of this result are discussed in Sect. 5.

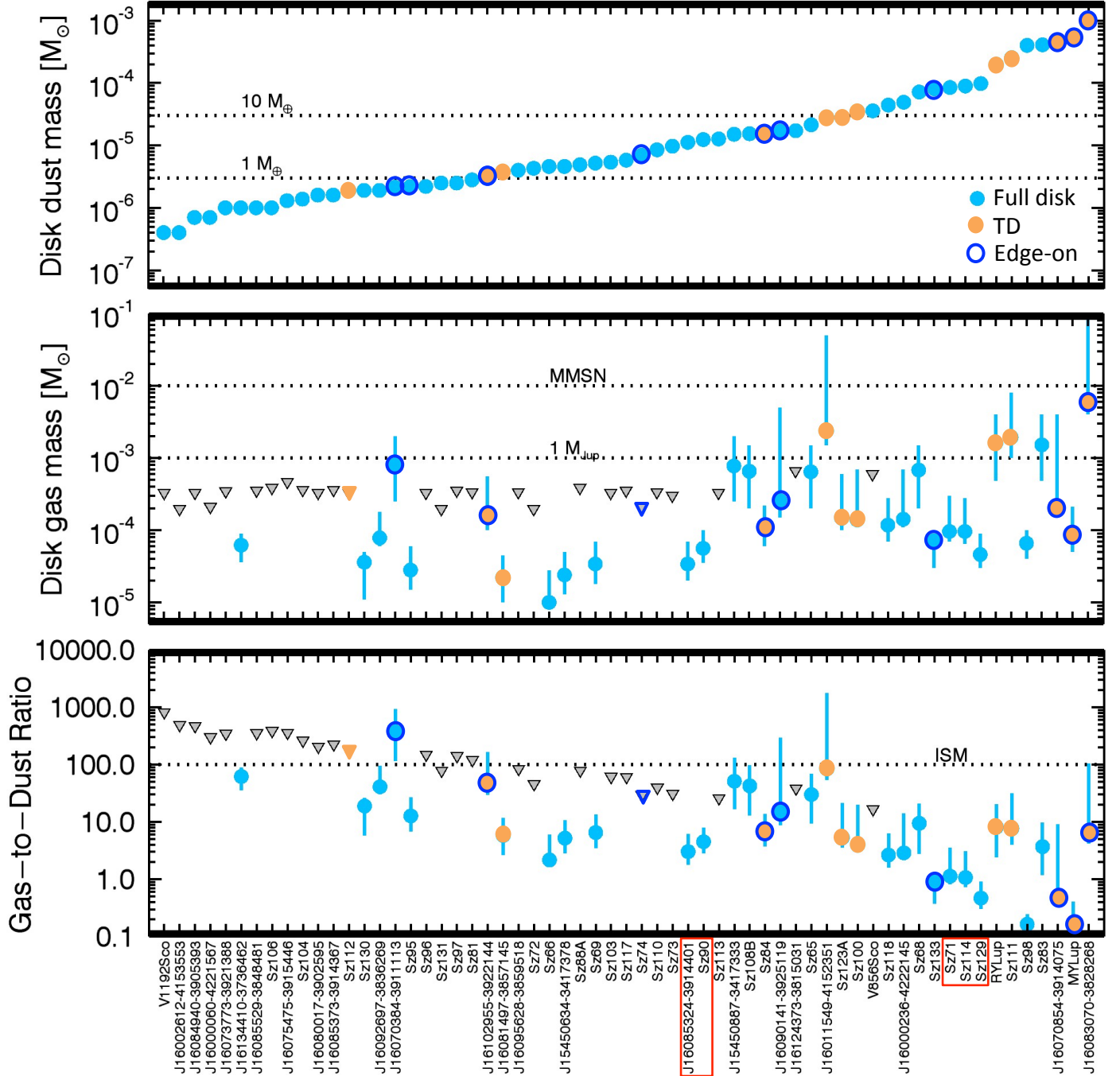


Fig. 6. Disk dust masses (*upper panel*), gas masses (*middle panel*), and gas-to-dust ratios (*lower panels*) for all the sources detected in the continuum. Gas non-detections are shown with gray triangles, while all detections are presented as filled circles. Objects that are classified as transitional disks (TD) are shown in orange, and edge-on disks are circled in blue. Red rectangles show the subsample of disks discussed in Sect. 5.2.1.

5. Discussion

5.1. Gas-to-dust ratio

Dust masses were calculated for all Lupus disks detected in the continuum as described in Sect. 4.1. For the 34 sources for which at least one of the two CO isotopologues was detected, disk gas masses were derived as explained in Sect. 4.2. When we divide the gas masses by the newly determined dust masses, it is possible to obtain global gas-to-dust mass ratios. Figure 6 shows that these are often much lower than the expected ISM value of 100 and occasionally reach unity or lower.

Only full-disk models were employed for the mass determinations, but three disks in the Lupus sample show resolved dust cavities, and three other sources show possible cavities with diameter $\lesssim 0.4''$ (Ansdell et al. 2016). Moreover, six other disks are classified as transition disk candidates, but do not show cavities in the ALMA images (Merín et al. 2010; Romero et al. 2012; van der Marel et al. 2016; Bustamante et al. 2015). All these sources, presented with orange symbols in Fig. 6, are not properly described by our grid of full-disk models. However, these moderate-resolution Lupus data primarily trace the outer disks, which should be well represented by a full-disk model

Table 3. Disk mass determination for all the detected sources in Lupus. **Table 3.** continued.

Source name	$M_{\text{gas}}[M_{\odot}]$	$M_{\text{min}}[M_{\odot}]$	$M_{\text{max}}[M_{\odot}]$
Sz65	6.435 ⁽⁻⁴⁾	2.0 ⁽⁻⁴⁾	1.5 ⁽⁻³⁾
Sz66	1.000 ⁽⁻⁵⁾	1.0 ⁽⁻⁵⁾	2.8 ⁽⁻⁵⁾
J15430131-3409153	<3.560 ⁽⁻⁴⁾	–	–
J15430227-3444059	<3.060 ⁽⁻⁴⁾	–	–
J15445789-3423392	<1.872 ⁽⁻⁴⁾	–	–
J15450634-3417378	2.400 ⁽⁻⁵⁾	1.3 ⁽⁻⁵⁾	5.0 ⁽⁻⁵⁾
J15450887-3417333	7.742 ⁽⁻⁴⁾	2.5 ⁽⁻⁴⁾	2.0 ⁽⁻³⁾
Sz68	6.800 ⁽⁻⁴⁾	2.0 ⁽⁻⁴⁾	1.5 ⁽⁻³⁾
Sz69	3.400 ⁽⁻⁵⁾	1.8 ⁽⁻⁵⁾	7.0 ⁽⁻⁵⁾
Sz71	9.600 ⁽⁻⁵⁾	7.0 ⁽⁻⁵⁾	3.0 ⁽⁻⁴⁾
Sz72	<1.965 ⁽⁻⁴⁾	–	–
Sz73	<3.012 ⁽⁻⁴⁾	–	–
Sz74	<2.055 ⁽⁻⁴⁾	–	–
Sz81	<3.372 ⁽⁻⁴⁾	–	–
Sz83	1.5162 ⁽⁻³⁾	4.8 ⁽⁻⁴⁾	4.0 ⁽⁻³⁾
Sz84	1.100 ⁽⁻⁴⁾	6.0 ⁽⁻⁵⁾	2.2 ⁽⁻⁴⁾
Sz129	4.600 ⁽⁻⁵⁾	3.0 ⁽⁻⁵⁾	9.0 ⁽⁻⁵⁾
J15592523-4235066	<1.920 ⁽⁻⁴⁾	–	–
RYLup	1.607 ⁽⁻³⁾	4.8 ⁽⁻⁴⁾	4.0 ⁽⁻³⁾
J16000060-4221567	<2.102 ⁽⁻⁴⁾	–	–
J16000236-4222145	1.420 ⁽⁻⁴⁾	1.1 ⁽⁻⁴⁾	7.0 ⁽⁻⁴⁾
J16002612-4153553	<1.965 ⁽⁻⁴⁾	–	–
Sz130	3.600 ⁽⁻⁵⁾	1.1 ⁽⁻⁵⁾	5.0 ⁽⁻⁵⁾
MYLup	8.250 ⁽⁻⁵⁾	5.0 ⁽⁻⁵⁾	2.1 ⁽⁻⁴⁾
Sz131	<1.965 ⁽⁻⁴⁾	–	–
J16011549-4152351	2.374 ⁽⁻³⁾	1.5 ⁽⁻³⁾	5.0 ⁽⁻²⁾
Sz133	7.250 ⁽⁻⁵⁾	3.0 ⁽⁻⁵⁾	9.0 ⁽⁻⁵⁾
Sz88A	<3.860 ⁽⁻⁴⁾	–	–
Sz88B	<3.292 ⁽⁻⁴⁾	–	–
J16070384-3911113	8.022 ⁽⁻⁴⁾	2.5 ⁽⁻⁴⁾	2.0 ⁽⁻³⁾
J16070854-3914075	2.025 ⁽⁻⁴⁾	1.8 ⁽⁻⁴⁾	4.0 ⁽⁻³⁾
Sz90	5.600 ⁽⁻⁵⁾	3.500 ⁽⁻⁵⁾	1.0 ⁽⁻⁴⁾
J16073773-3921388	3.455 ⁽⁻⁴⁾	–	–
Sz95	2.800 ⁽⁻⁵⁾	1.5 ⁽⁻⁵⁾	6.0 ⁽⁻⁵⁾
J16075475-3915446	<4.670 ⁽⁻⁴⁾	–	–
J16080017-3902595	<3.292 ⁽⁻⁴⁾	–	–
J16080175-3912316	<5.562 ⁽⁻⁴⁾	–	–
Sz96	<3.292 ⁽⁻⁴⁾	–	–
J16081497-3857145	2.200 ⁽⁻⁵⁾	1.0 ⁽⁻⁵⁾	4.5 ⁽⁻⁵⁾
Sz97	<3.535 ⁽⁻⁴⁾	–	–
Sz98	6.600 ⁽⁻⁵⁾	4.0 ⁽⁻⁵⁾	1.0 ⁽⁻⁴⁾
Sz99	<3.050 ⁽⁻⁴⁾	–	–
Sz100	1.400 ⁽⁻⁴⁾	1.1 ⁽⁻⁴⁾	7.0 ⁽⁻⁴⁾
J160828.1-391310	<3.050 ⁽⁻⁴⁾	–	–
Sz103	<3.292 ⁽⁻⁴⁾	–	–
J16083070-3828268	6.01 ⁽⁻³⁾	4.0 ⁽⁻³⁾	1.0 ⁽⁻¹⁾
Sz104	<3.617 ⁽⁻⁴⁾	–	–
J160831.1-385600	<5.400 ⁽⁻⁴⁾	–	–
V856Sco	<5.970 ⁽⁻⁴⁾	–	–
Sz106	<3.860 ⁽⁻⁴⁾	–	–
Sz108B	6.537 ⁽⁻⁴⁾	2.0 ⁽⁻⁴⁾	1.5 ⁽⁻³⁾
J16084940-3905393	<3.292 ⁽⁻⁴⁾	–	–
V1192Sco	<3.292 ⁽⁻⁴⁾	–	–
Sz110	<3.372 ⁽⁻⁴⁾	–	–
J16085324-3914401	3.400 ⁽⁻⁵⁾	2.0 ⁽⁻⁵⁾	7.0 ⁽⁻⁵⁾
J16085373-3914367	<3.617 ⁽⁻⁴⁾	–	–
Sz111	1.935 ⁽⁻³⁾	1.0 ⁽⁻³⁾	8.0 ⁽⁻³⁾
J16085529-3848481	<3.535 ⁽⁻⁴⁾	–	–
Sz112	<3.292 ⁽⁻⁴⁾	–	–
Sz113	<3.292 ⁽⁻⁴⁾	–	–
J16085828-3907355	<5.077 ⁽⁻⁴⁾	–	–
J16085834-3907491	<5.400 ⁽⁻⁴⁾	–	–

Source name	$M_{\text{gas}}[M_{\odot}]$	$M_{\text{min}}[M_{\odot}]$	$M_{\text{max}}[M_{\odot}]$
J16090141-3925119	2.575 ⁽⁻⁴⁾	1.5 ⁽⁻⁴⁾	5.0 ⁽⁻³⁾
Sz114	9.600 ⁽⁻⁵⁾	6.5 ⁽⁻⁵⁾	2.8 ⁽⁻⁴⁾
Sz115	<3.292 ⁽⁻⁴⁾	–	–
J16091644-3904438	<5.562 ⁽⁻⁴⁾	–	–
J16092032-3904015	<4.995 ⁽⁻⁴⁾	–	–
J16092317-3904074	<5.400 ⁽⁻⁴⁾	–	–
J16092697-3836269	7.800 ⁽⁻⁵⁾	6.0 ⁽⁻⁵⁾	1.8 ⁽⁻⁴⁾
J160934.2-391513	<5.562 ⁽⁻⁴⁾	–	–
J16093928-3904316	<5.400 ⁽⁻⁴⁾	–	–
Sz117	<3.535 ⁽⁻⁴⁾	–	–
Sz118	1.175 ⁽⁻⁴⁾	7.0 ⁽⁻⁵⁾	2.8 ⁽⁻⁴⁾
J16095628-3859518	<3.372 ⁽⁻⁴⁾	–	–
J16100133-3906449	<4.995 ⁽⁻⁴⁾	–	–
J16101307-3846165	<3.455 ⁽⁻⁴⁾	–	–
J16101857-3836125	<3.212 ⁽⁻⁴⁾	–	–
J16101984-3836065	<3.372 ⁽⁻⁴⁾	–	–
J16102741-3902299	<5.400 ⁽⁻⁴⁾	–	–
J16102955-3922144	1.600 ⁽⁻⁴⁾	1.0 ⁽⁻⁴⁾	5.6 ⁽⁻⁴⁾
J16104536-3854547	<5.725 ⁽⁻⁴⁾	–	–
Sz123B	<3.535 ⁽⁻⁴⁾	–	–
Sz123A	1.480 ⁽⁻⁴⁾	1.0 ⁽⁻⁴⁾	6.0 ⁽⁻⁴⁾
J16115979-3823383	<3.212 ⁽⁻⁴⁾	–	–
J16120445-3809589	<5.725 ⁽⁻⁴⁾	–	–
J16121120-3832197	<5.645 ⁽⁻⁴⁾	–	–
J16124373-3815031	<6.617 ⁽⁻⁴⁾	–	–
J16134410-3736462	6.200 ⁽⁻⁵⁾	3.6 ⁽⁻⁵⁾	9.0 ⁽⁻⁵⁾

even for transitional disks. Therefore the calculated gas-to-dust ratios provide a first-order description of the disk properties in Lupus, including the transitional disks.

An alternative way to present the results is shown in Fig. 7. The global gas-to-dust ratios obtained for the sources detected in both gas and dust are shown in a histogram. Most of the disks, 23 out of 34, present gas-to-dust ratios lower than 10, with 13 of these sources showing ratios between 3 and 10.

Traditionally, disk masses are thought to be dominated by the gaseous component with ISM-like gas-to-dust ratios of 100 assumed to convert M_{dust} into total disk mass. Many disks in Lupus instead have lower measured gas-to-dust ratios, as shown in the bottom panel of Fig. 6. A similar result was found by Ansdell et al. (2016) with only 10 gas mass determinations, and this has been confirmed with a larger sample of 34 gas mass measurements. A possible interpretation is that Lupus disks are evolved and that the gas has been physically dissipated, while the large dust grains are still retained in the midplane. The finding of disks that are depleted in gas by a few Myr would place strong constraints on disk evolution and planet formation theories (Thommes et al. 2008; Lissauer et al. 2009; Levison et al. 2015), as discussed by Ansdell et al. (2016).

5.2. Carbon depletion vs low gas masses

An alternative interpretation of low CO-based gas masses and gas-to-dust ratios is that the CO abundance is low, for example, because of sequestering of carbon from CO to more complex molecules or because it is locked up into larger bodies (Aikawa et al. 1996; Bergin et al. 2014; Du et al. 2015; Eistrup et al. 2016; Kama et al. 2016; Yu et al. 2016). However, current data cannot distinguish between these scenarios.

Clues on tracers to probe these two cases come from the well-studied TW Hya disk. In this unique case, HD far-infrared

Notes. Upper limits on the disk mass are also reported. Notation: ⁽⁻ⁿ⁾ indicates 10^{-n} .

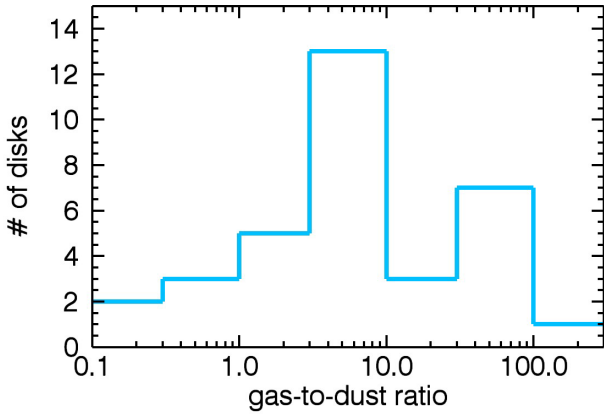


Fig. 7. Histogram showing the number of disks presenting different levels of gas-to-dust ratio. Only sources detected in both continuum and line emission are considered.

emission has been employed to independently determine an accurate gas mass (Bergin et al. 2013) and thereby calibrate the weak $C^{18}O$ detection. These observations have been interpreted to imply a much lower abundance of CO, caused by carbon depletion of two orders of magnitude (Favre et al. 2013; Schwarz et al. 2016). This finding has been confirmed by an independent analysis, where other lines such as [CI], [CII], [OI], C_2H , and the CO ladder have been fit self-consistently (Kama et al. 2016). Unfortunately, no current facility is able to detect the fundamental HD transition in the Lupus disks. However, detection of more complex carbon-bearing species can help to distinguish between the two cases of gas-poor versus carbon-poor disks.

There is some debate about the mechanism(s) responsible for carbon depletion in protoplanetary disks. A possible explanation comes from gas-phase reactions initiated by X-ray and cosmic-ray ionization of He in the disk. The resulting He^+ atoms can react with gaseous CO and gradually extract the carbon, which can then be processed into more complex molecules that can freeze onto cold dust grains at higher temperatures than CO (Aikawa et al. 1997; Bruderer et al. 2012; Favre et al. 2013; Bergin et al. 2014; Kama et al. 2016; Yu et al. 2016). Moreover, oxygen will also be removed from the gas by freeze-out of H_2O , CO_2 , and CO, even more than carbon (Hogerheijde et al. 2011; Öberg et al. 2011; Walsh et al. 2015). Accordingly, a way to test the level of carbon depletion in disks is to compare observations of CO isotopologues with species such as C_2H and $c-C_3H_2$, whose gas-phase abundances are sensitive to the gaseous carbon abundance and $[C]/[O]$ ratio. Indeed, C_2H is observed to have very strong emission in the TW Hya disk (Kastner et al. 2015) and is particularly strong when both elements are depleted, but gaseous $[C]/[O] > 1$ (Kama et al. 2016). If the difference in the global gas-to-dust ratios found in Lupus disks is due to different levels of carbon depletion, then this should be reflected in C_2H and $c-C_3H_2$ fluxes, and this may be tested by future ALMA observations. Alternatively, ice chemistry may be the fundamental process that turns CO into more complex organics, such as CH_3OH , or into CO_2 and CH_4 ice (see, e.g., Fig. 3c in Eistrup et al. 2016). Finally, volatile elements, such as oxygen and carbon, may be locked up in large icy bodies in the midplane (Bergin et al. 2010; Ros & Johansen 2013; Guidi et al. 2016). These large pebbles cannot diffuse upward and participate in the gas-phase chemistry (see Du et al. 2015; Kama et al. 2016). Such a process is

most likely the cause of the underabundance of gas-phase water in disk atmospheres.

5.2.1. Test models

From the modeling side, it is possible to simulate the two different scenarios (low gas-to-dust ratio or high carbon depletion) and to compare the predictions with the observations. As done by Miotello et al. (2016), the loss of gas is simulated by fixing the gas mass and increasing the dust mass, that is, by obtaining lower gas-to-dust ratios. The carbon depletion scenario is obtained by reducing the initial ISM-like carbon abundance by different levels. We define carbon depletion as $\delta_C = 1$ if the carbon over hydrogen ratio is set to the ISM-level, $[C]/[H] = 1.35 \times 10^{-4}$. We then assume higher values of carbon depletion $\delta_C = 0.1, 0.01$ if the abundance ratio is $[C]/[H] = 1.35 \times 10^{-5}, 1.35 \times 10^{-6}$, respectively.

Two interesting groups of sources can be identified in Fig. 6 for which the gas mass is $M_{\text{gas}} = 10^{-4} M_{\odot}$, while the dust mass is either $M_{\text{dust}} = 10^{-4} M_{\odot}$ (Sz71, Sz114, Sz129) or $M_{\text{dust}} = 10^{-5} M_{\odot}$ (J16085324-3914401, Sz90). These five disks present similar ^{13}CO emission, but different continuum fluxes. This may be interpreted as the first group of sources presenting a lower gas-to-dust ratio, or a higher level of carbon depletion. Four additional models were run with $R_c = 30, 60$ au, fixing the gas mass $M_{\text{gas}} = 10^{-4} M_{\odot}$ and increasing the dust mass from $M_{\text{dust}} = 10^{-6} M_{\odot}$ to $M_{\text{dust}} = 10^{-5}, 10^{-4} M_{\odot}$, that is, with gas-to-dust ratios of 10 and 1 (see purple circles in Fig. 8). Moreover, another eight models were run with $R_c = 30, 60$ au, $M_{\text{dust}} = 10^{-5}, 10^{-4} M_{\odot}$, gas-to-dust ratios of 100, but with initial carbon abundances reduced by a factor $\delta_C = 0.1, 0.01$ (see Fig. 8). Remarkably, for a fixed gas mass and δ_C , the CO line intensities do not depend strongly on dust masses.

From comparing the results from the two sets of models presented in Fig. 8 with the observations, it is not possible to rule out one of the two scenarios, which indicates that we need to calibrate CO-based masses with other tracers. The first group of sources (Sz71, Sz114, and Sz129), bright in the continuum, but faint in CO emission, are well described either by models with gas-to-dust ratios equal to unity or with a carbon depletion of around two orders of magnitudes. The fluxes of the second set of disks (J16085324-3914401 and Sz90) are instead reproduced with less precision by models with a gas-to-dust ratio equal to 10, or with carbon depletion of about a factor of 10. Carbon depletion and gas dissipation processes may both playing a role, but it is not possible to estimate the relative importance.

5.3. Correlation between disk gas mass and stellar mass

Ansdeell et al. (2016) found a positive correlation between M_{gas} and M_{\star} (computed by Alcalá et al. 2014, 2017), but were unable to produce a meaningful fit given the low number of disks detected in the two CO isotopologues and the large uncertainties on the gas mass determinations. This changes when the sample is enlarged from 10 to 34 sources. Using the Bayesian linear regression method (Kelly 2007), which accounts for the upper limits, we find a correlation with $r = 0.74$ and a two-sided p -value of 3×10^{-2} for the null hypothesis that the slope of this correlation is zero. This is shown in Fig. 9, where the red line gives the Bayesian linear regression fit, which considers errors on both axes and is applied to detected and undetected targets. The slope of the correlation is 0.63 and the intercept is -3.92 .

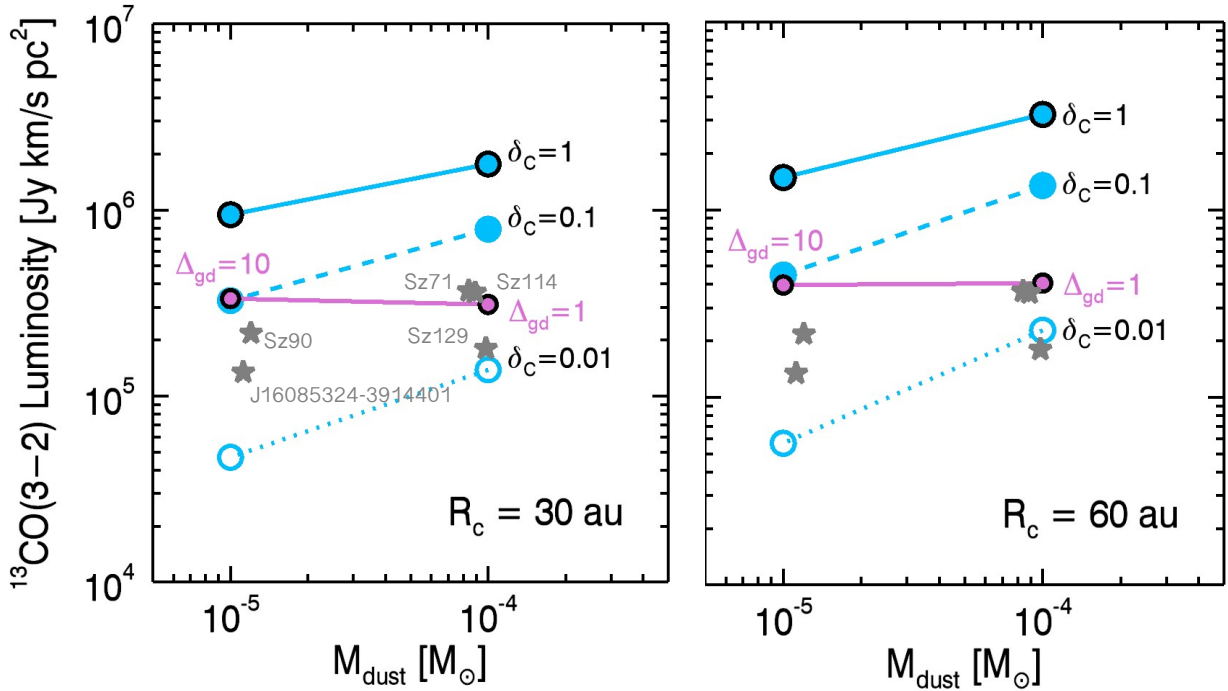


Fig. 8. ^{13}CO ($J = 3-2$) luminosity as a function of dust mass. Light blue circles present the simulated line luminosities with different levels of carbon depletion: no depletion ($\delta_c = 1$, black contoured circles), depletion by a factor of 10 ($\delta_c = 0.1$, filled light blue circles), and depletion by two orders of magnitude ($\delta_c = 0.01$, light blue empty circles). Purple circles present the simulated line luminosities obtained without carbon depletion, fixing the gas mass $M_{\text{gas}} = 10^{-4} M_{\odot}$ and increasing the dust mass to $M_{\text{dust}} = 10^{-5}, 10^{-4} M_{\odot}$, accordingly with gas-to-dust ratios $\Delta_{\text{gd}} = 10, 1$. A subsample of six Lupus sources is shown with gray stars. Models run with $R_c = 30$ au and with $R_c = 60$ au are shown in the *left and right panels*, respectively.

Ansdeell et al. (2016) found a clear correlation between M_{dust} and M_{\star} . Furthermore, Manara et al. (2016) found a linear relation between the mass accretion rate onto the central star and the disk mass inferred from the dust by combining ALMA and VLT/X-shooter data (Alcalá et al. 2014, 2017). A relation between \dot{M}_{acc} and M_{disk} has been theoretically predicted for viscously evolving disks (Hartmann et al. 1998), and it was found observationally in Lupus for the first time using dust masses to measure the bulk disk mass, which is equivalent to assume a constant gas-to-dust ratio (Manara et al. 2016). For a gas-to-dust ratio of 100, the ratio of $M_{\text{disk}}/M_{\text{acc}}$ is comparable with the age of the region, as expected for viscous disks and under the effect of other disk evolution processes (Jones et al. 2012; Rosotti et al. 2017). On the other hand, no correlation was found with disk masses derived from CO isotopologue lines by Ansdeell et al. (2016). Even expanding the sample of gas masses to 34 sources, no correlation is found in this work. Furthermore, the ratio of $M_{\text{disk}}/M_{\text{acc}}$ when using M_{disk} derived from CO isotopologues is much lower than the age of the region. This is expected only in cases where external disturbances, such as external photoevaporation, play a major role in the evolution of disks (Rosotti et al. 2017). As this is probably not the case in the Lupus region, this method suggests that CO-based disk masses are generally underestimated.

When we assume that all Lupus disks have evolved mainly through viscous processes over the past few Myr, the observed correlation between the current mass accretion rate and dust mass found by Manara et al. (2016) implies a constant gas-to-dust ratio, which is close to 100 based on the observed $M_{\text{disk}}/M_{\text{acc}}$ ratio. This in turn points to a scenario in which carbon-depletion mechanisms are in play and affect CO line emission. Moreover, the non-correlation found between mass

accretion rate and CO-based gas masses implies that carbon is non-homogeneously depleted throughout the Lupus sample. This opens an interesting question on the stellar and disk properties that maximize the sequestering of carbon from gas-phase CO. As discussed in Sect. 5.2, if an anticorrelation of complementary gas tracers, such as C_2H , with CO lines were observed, then this would help in solving the controversy.

6. Summary and conclusion

We have employed the grid of physical-chemical models presented in Miotello et al. (2016) to analyze continuum and CO isotopologue ALMA observations of Lupus disks (Ansdeell et al. 2016). By also employing the ^{13}CO -only detections in the optically thin regime, we calculated disk gas masses for a total of 34 sources, expanding the sample of 10 disks for which Ansdeell et al. (2016) were able to derive gas masses. As previously found, overall, the gas masses are very low, often lower than M_{Jup} . Accordingly, global gas-to-dust ratios are much lower than the expected ISM-value of 100; they lie predominantly between 1 and 10. Low CO-based gas masses and gas-to-dust ratios may indicate rapid loss of gas, or alternatively, carbon depletion. The latter may occur through sequestering of carbon from CO that is either locked into large icy bodies in the midplane, or converted into more complex molecules by either gas-phase chemistry or ice chemistry (Aikawa et al. 1996; Bergin et al. 2014; Du et al. 2015; Eistrup et al. 2016; Kama et al. 2016; Yu et al. 2016). However, current ALMA data alone cannot distinguish between these scenarios. We have simulated both of them, but model results did not allow us to rule out one of the two hypotheses, which means that we need to calibrate CO-based masses with other tracers. Alternatively, exploitation of disk

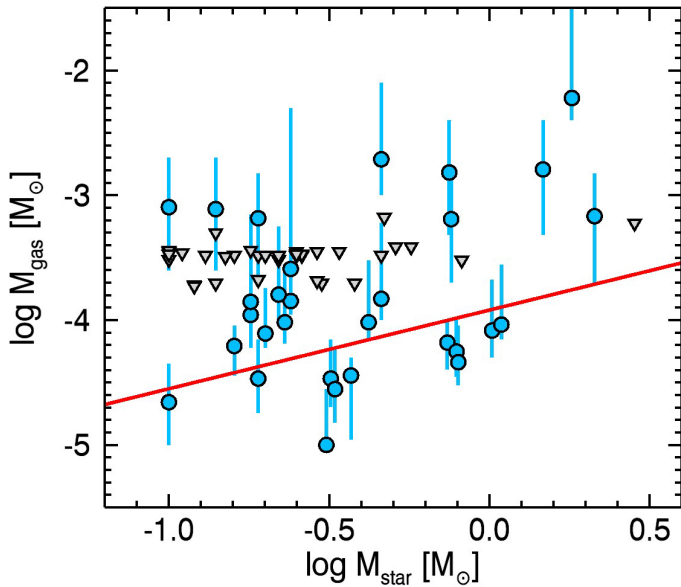


Fig. 9. Disk gas mass as a function of stellar mass for Lupus disks. Gas non-detections are shown as upper limits with gray triangles. For the gas detections the error bars are reported. The red line gives the Bayesian linear regression fit (Kelly 2007).

mass and mass accretion rate measurements simultaneously available in protoplanetary disks can give insight into the nature of low CO-based masses (Manara et al. 2016) and point to non-homogeneous carbon depletion throughout the Lupus sample.

Acknowledgements. This paper makes use of the following ALMA data: ADS/JAO.ALMA#2013.1.00220.S. ALMA is a partnership of ESO (representing its member states), NSF (USA) and NINS (Japan), together with NRC (Canada), NSC and SIAA (Taiwan), and KASI (Republic of Korea), in cooperation with the Republic of Chile. The Joint ALMA Observatory is operated by ESO, AUI/ NRAO, and NAOJ. Astrochemistry in Leiden is supported by the Netherlands Research School for Astronomy (NOVA), by a Royal Netherlands Academy of Arts and Sciences (KNAW) professor prize, and by the European Union A-ERC grant 291141 CHEMPLAN. This work was partly supported by the Italian Ministero dell’Istruzione, Università e Ricerca through the grant Progetti Premiali 2012-iALMA (CUP C52I13000140001). C.F.M. gratefully acknowledges an ESA Research Fellowship. J.P.W. is supported by funding from the NSF and NASA through grants AST- 1208911 and NNX15AC92G.

References

- Aikawa, Y., Miyama, S. M., Nakano, T., & Umembayashi, T. 1996, *ApJ*, 467, 684
Aikawa, Y., Umembayashi, T., Nakano, T., & Miyama, S. M. 1997, *ApJ*, 486, L51
Aikawa, Y., van Zadelhoff, G. J., van Dishoeck, E. F., & Herbst, E. 2002, *A&A*, 386, 622
Alcalá, J. M., Natta, A., Manara, C. F., et al. 2014, *A&A*, 561, A2
Alcalá, J. M., Manara, C. F., Natta, A., et al. 2017, *A&A*, in press, DOI: 10.1051/0004-6361/201629929
ALMA Partnership, Brogan, C. L., Pérez, L. M., et al. 2015, *ApJ*, 808, L3
Andrews, S. M. 2015, *PASP*, 127, 961
Andrews, S. M., Wilner, D. J., Hughes, A. M., et al. 2012, *ApJ*, 744, 162
Ansdell, M., Williams, J. P., van der Marel, N., et al. 2016, *ApJ*, 828, 46
Armitage, P. J. 2011, *ARA&A*, 49, 195
Barenfeld, S. A., Carpenter, J. M., Ricci, L., & Isella, A. 2016, *ApJ*, 827, 142
Beckwith, S. V. W., Sargent, A. I., Chini, R. S., & Guesten, R. 1990, *AJ*, 99, 924
Bergin, E. A., Hogerheijde, M. R., Brinch, C., et al. 2010, *A&A*, 521, L33
Bergin, E. A., Cleeves, L. I., Gorti, U., et al. 2013, *Nature*, 493, 644
Bergin, E. A., Cleeves, L. I., Crockett, N., & Blake, G. A. 2014, *Faraday Discussions*, 168, 61
Blake, G. A., van Dishoeck, E. F., & Sargent, A. I. 1992, *ApJ*, 391, L99
Boneberg, D. M., Panić, O., Haworth, T. J., Clarke, C. J., & Min, M. 2016, *MNRAS*, 461, 385
Bruderer, S. 2013, *A&A*, 559, A46
Bruderer, S., van Dishoeck, E. F., Doty, S. D., & Herczeg, G. J. 2012, *A&A*, 541, A91
Bruderer, S., van der Marel, N., van Dishoeck, E. F., & van Kempen, T. A. 2014, *A&A*, 562, A26
Bustamante, I., Merín, B., Ribas, Á., et al. 2015, *A&A*, 578, A23
Comerón, F. 2008, *Handbook of Star Forming Regions, Volume II*, 5, 295
Dartois, E., Dutrey, A., & Guilloteau, S. 2003, *A&A*, 399, 773
Drozdovskaya, M. N., Walsh, C., Visser, R., Harsono, D., & van Dishoeck, E. F. 2015, *MNRAS*, 451, 3836
Du, F., Bergin, E. A., & Hogerheijde, M. R. 2015, *ApJ*, 807, L32
Dunham, M. M., Allen, L. E., Evans, N. J., II, et al. 2015, *ApJS*, 220, 11
Dutrey, A., Guilloteau, S., & Guélin, M. 1997, *A&A*, 317, L55
Eistrup, C., Walsh, C., & van Dishoeck, E. F. 2016, *A&A*, 595, A83
Evans, N. J., II, Dunham, M. M., Jørgensen, J. K., et al. 2009, *ApJS*, 181, 321
Favre, C., Cleeves, L. I., Bergin, E. A., Qi, C., & Blake, G. A. 2013, *ApJ*, 776, L38
Fedele, D., Bruderer, S., van Dishoeck, E. F., et al. 2013, *ApJ*, 776, L3
Gorti, U., & Hollenbach, D. 2009, *ApJ*, 690, 1539
Guidi, G., Tazzari, M., Testi, L., et al. 2016, *A&A*, 588, A112
Haisch, K. E., Jr., Greene, T. P., Barsony, M., & Ressler, M. 2001, *BAAS*, 33, 04.10
Hartmann, L., Calvet, N., Gullbring, E., & D’Alessio, P. 1998, *ApJ*, 495, 385
Hernández, J., Calvet, N., Briceño, C., et al. 2007, *ApJ*, 671, 1784
Hogerheijde, M. R., Bergin, E. A., Brinch, C., et al. 2011, *Science*, 334, 338
Hollenbach, D., Gorti, U., Meyer, M., et al. 2005, *ApJ*, 631, 1180
Jones, M. G., Pringle, J. E., & Alexander, R. D. 2012, *MNRAS*, 419, 925
Kama, M., Bruderer, S., van Dishoeck, E. F., et al. 2016, *A&A*, 592, A83
Kastner, J. H., Qi, C., Gorti, U., et al. 2015, *ApJ*, 806, 75
Kelly, B. C. 2007, *ApJ*, 665, 1489
Levison, H. F., Kretke, K. A., & Duncan, M. J. 2015, *Nature*, 524, 322
Lissauer, J. J., Hubickyj, O., D’Angelo, G., & Bodenheimer, P. 2009, *Icarus*, 199, 338
Manara, C. F., Rosotti, G., Testi, L., et al. 2016, *A&A*, 591, L3
Merín, B., Brown, J. M., Oliveira, I., et al. 2010, *ApJ*, 718, 1200
Miotello, A., Bruderer, S., & van Dishoeck, E. F. 2014, *A&A*, 572, A96
Miotello, A., van Dishoeck, E. F., Kama, M., & Bruderer, S. 2016, *A&A*, 594, A85
Nomura, H., Aikawa, Y., Nakagawa, Y., & Millar, T. J. 2009, *A&A*, 495, 183
Öberg, K. I., Murray-Clay, R., & Bergin, E. A. 2011, *ApJ*, 743, L16
Panić, O., Hogerheijde, M. R., Wilner, D., & Qi, C. 2008, *A&A*, 491, 219
Panić, O., Hogerheijde, M. R., Wilner, D., & Qi, C. 2009, *A&A*, 501, 269
Pascucci, I., Testi, L., Herczeg, G. J., et al. 2016, *ApJ*, 831, 125
Ricci, L., Testi, L., Natta, A., et al. 2010, *A&A*, 512, A15
Romero, G. A., Schreiber, M. R., Cieza, L. A., et al. 2012, *ApJ*, 749, 79
Ros, K., & Johansen, A. 2013, *A&A*, 552, A137
Rosotti, G., Clarke, C., Manara, C. F., & Facchini, S. 2017, *MNRAS*, submitted
Schwarz, K. R., Bergin, E. A., Cleeves, L. I., et al. 2016, *ApJ*, 823, 91
Thi, W. F., van Dishoeck, E. F., Blake, G. A., et al. 2001, *ApJ*, 561, 1074
Thommes, E. W., Matsumura, S., & Rasio, F. A. 2008, *Science*, 321, 814
van der Marel, N., Verhaar, B. W., van Terwisga, S., et al. 2016, *A&A*, 592, A126
van Zadelhoff, G.-J., van Dishoeck, E. F., Thi, W.-F., & Blake, G. A. 2001, *A&A*, 377, 566
Visser, R., van Dishoeck, E. F., & Black, J. H. 2009, *A&A*, 503, 323
Walsh, C., Nomura, H., & van Dishoeck, E. 2015, *A&A*, 582, A88
Weingartner, J. C., & Draine, B. T. 2001, *ApJ*, 548, 296
Williams, J. P., & Best, W. M. J. 2014, *ApJ*, 788, 59
Woitke, P., Kamp, I., & Thi, W.-F. 2009, *A&A*, 501, 383
Yu, M., Willacy, K., Dodson-Robinson, S. E., Turner, N. J., & Evans, N. J., II 2016, *ApJ*, 822, 53