



Universiteit
Leiden
The Netherlands

Chemical biology of glucosylceramide metabolism fundamental studies and applications for Gaucher disease

Oussoren, S.V.; Oussoren S.V.

Citation

Oussoren, S. V. (2017, September 28). *Chemical biology of glucosylceramide metabolism fundamental studies and applications for Gaucher disease*. Retrieved from <https://hdl.handle.net/1887/55842>

Version: Not Applicable (or Unknown)

License: [Licence agreement concerning inclusion of doctoral thesis in the Institutional Repository of the University of Leiden](#)

Downloaded from: <https://hdl.handle.net/1887/55842>

Note: To cite this publication please use the final published version (if applicable).

Cover Page



Universiteit Leiden



The handle <http://hdl.handle.net/1887/55842> holds various files of this Leiden University dissertation

Author: Oussoren, Saskia

Title: Chemical biology of glucosylceramide metabolism : fundamental studies and applications for Gaucher disease

Date: 2017-09-28

Addendum

Simultaneous quantitation of sphingoid bases
by UPLC-ESI-MS/MS with identical
¹³C-encoded internal standards

Simultaneous quantitation of sphingoid bases by UPLC-ESI-MS/MS with identical ¹³C-encoded internal standards

Based on

M. Mirzaian^a, P. Wisse^b, M.J. Ferraz^a, A.R.A. Marques^c, P. Gaspar^d,
S.V. Oussoren^a, K. Kytidou^a, J.D.C. Codée^b, G. van der Marel^b,
H.S. Overkleeft^b, J.M. Aerts^a *

^aDep. Medical Biochemistry, LIC, Leiden University

^bDep. Bio-organic Synthesis, LIC, Leiden University

^cpresent address: Dep. Biochemistry,
Christian-Albrechts-Universität, Kiel, Germany

^dpresent address: NSMGU, Human Genetics Dept,
National Institute of Health Dr Ricardo Jorge, Porto, Portugal

Clin Chim Acta. 2017 Mar;466:178-184.

doi: 10.1016/j.cca.2017.01.014.

Abstract

Free sphingoid bases (lysosphingolipids) of primary storage sphingolipids are increased in tissues and plasma of several sphingolipidoses. As reported previously by us, sphingoid bases can be accurately quantified using UPLC-ESI-MS/MS, particularly in combination with identical ¹³C-encoded internal standards. The feasibility of simultaneous quantitation of sphingoid bases in plasma specimens spiked with a mixture of such standards is described here. The sensitivity and linearity of detection is excellent for all examined sphingoid bases (sphingosine, sphinganine, hexosyl-sphingosine (glucosylsphingosine), hexosyl₂-sphingosine (lactosylsphingosine), hexosyl₃-sphingosine (globotriaosylsphingosine), phosphorylcholine-sphingosine) in the relevant concentration range and the measurements display very acceptable intra- and inter-assay variation (<10 % average). Plasma samples of a series of male and female Gaucher Disease and Fabry Disease patients were analyzed with the multiplex assay. The obtained data compare well to those previously determined for plasma globotriaosylsphingosine and glucosylsphingosine in GD and FD patients. The same approach can also be utilized to measure sphingolipids in the same sample. After extraction of sphingolipids from the same sample these can be converted to sphingoid bases through microwave exposure and next quantified using ¹³C-encoded internal standards.

Introduction

Previously we reported on marked increases of globotriaosylsphingosine (lysoGb3) in Fabry disease (FD) patients and glucosylsphingosine (GlcSph) in Gaucher disease (GD) patients¹⁻⁴. Similarly, galactosylsphingosine (GalSph) is known to be elevated in Krabbe disease (KD), lysosulfatide in Metachromatic Leukodystrophy (MLD), phosphorylcholine-sphingosine (lysoSM) in Niemann Pick type A/B disease as well as lysoSM and GlcSph in Niemann Pick type C disease (NPC)⁵⁻⁹. Quantitation of elevated sphingoid bases has great diagnostic value for all these disorders. In place are validated measurements of lysoGb3 and hexosyl-sphingosine (HexSph, is GlcSph and/or GalSph) by UPLC-ESI-MS/MS with identical ¹³C₅-encoded standards. The use of identical internal standards in these measurements offers compensation for losses during extraction, ionization efficiency and mass spectrometric performance.

No correction for the sample matrix, such as ion suppression and in some cases ion enhancement, is necessary. ¹³C₅-encoded lysoGb3, GlcSph, sphingosine (Spho) and sphinganine (Spha) have been synthesized by us^{2,10}. We now developed and validated a convenient method for simultaneous UPLC-ESI-MS/MS quantitation of plasma sphinganine, sphingosine, GlcSph, LacSph (lactosylsphingosine), lysoGb3 and lysoSM using isotope-encoded standards and C17-lysoSM. The sample preparation requires just 50 µL of plasma and implies lipid extraction according to modified Bligh and Dyer with acidic buffer. Excellent sensitivity, high accuracy and good reproducibility are obtained with the described method. We additionally show that from the same sample sphingolipids (ceramide, hexosyl-ceramide, hexosyl₂-ceramide, and hexosyl₃-ceramide) can be quantified with the same method. For this, sphingolipids are extracted, deacylated by microwave exposure and the obtained sphingoid bases are quantified with corresponding standards.

Results

Assay validation

Calibration curves.

A linear response was obtained over the entire concentration range (M&M), R² for each sphingoid bases exceeded 0.995 (data not shown).

Intra- and inter-assay validation.

Different concentrations of non-labeled C18 bases (M&M) were added to control plasma from a healthy subject. Samples were separately extracted six times to examine the intra-assay variation. To examine inter-assay variation the same plasma specimens were extracted and measured six times on subsequent days. Figure 1 shows the inter- and intra-assay variations for the individual sphingoid bases. The intra- and inter-assay variation was on average 4.58 % and 9.83 %, respectively (ranges 1.34-14.54 % and 1.28-19.28 %, respectively), (see also table 1 in supplemental information). The limit of detection (LOD) for GlcSph, LacSph, lysoGb3 and lysoSM was 0.05 nmol/L, and for sphingosine and sphinganine 0.08 nmol/L. The LOQ for

GlcSph, LacSph, lysoGb3 and lysoSM was 0.15 nmol/L, and for sphingosine and sphinganine 0.45 nmol/L.

Effect of different storage conditions and stability of sphingoid bases.

Plasma samples, identical to the ones described above, were stored for 1 wk at -20° C, 4° C and RT. As presented in figure 2, no significant differences in levels of various bases when stored at different conditions were observed. The levels of bases were similar to those in the directly used same plasma sample (figure 1 and table 2 in supplemental information), indicating acceptable stability. Excellent stability of the sphingoid bases lysoGb3 and GlcSph was previously noted by us and others^{3,11}.

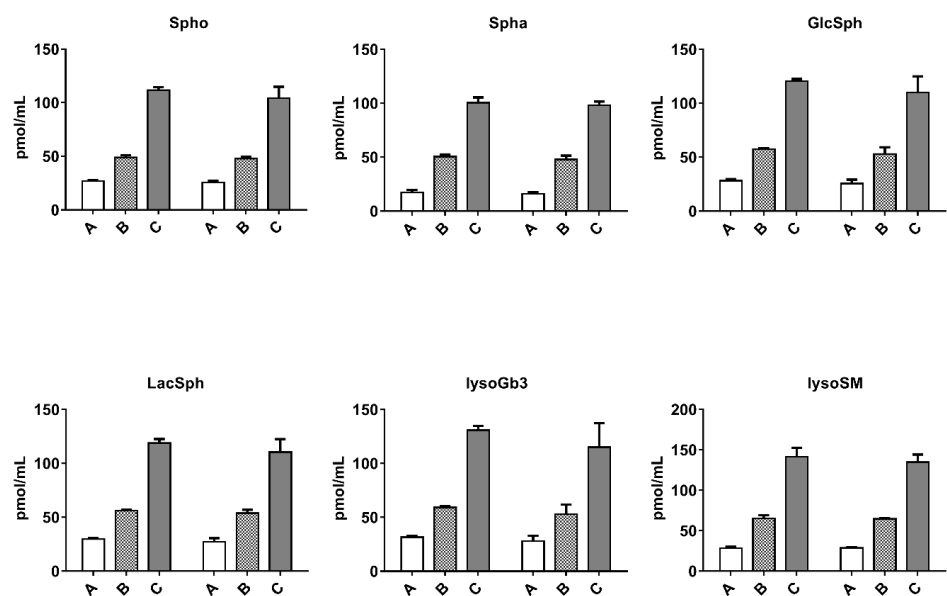


Figure 1. Intra-assay and inter-assay validation. Left bars represent intra-assay and right bars represent inter-assay validation. A, B and C are different concentrations of spike of equal amounts of lyso-glycosphingolipids in control plasma, 20, 50 and 100 pmol/mL respectively.

UPLC-ESI-MS/MS quantitation of sphingoid bases in female and male control, GD and FD plasma specimens.

We then simultaneously quantified sphingoid bases in plasma specimens of control subjects (males n=21, females n=21) by a single extraction, in plasma of GD patients (males n=10, females n=10) in duplicate and in plasma of FD patients (males n=10, females n=10) in duplicate (see figure 3). Significant elevations of Hex₃Sph (=lysoGb3) in male FD patients and to a more modest extent in female FD patients were detected, exactly as noted before^{1,12}.

Notably, plasma lysoGb3 tended to be increased in male and female GD patients, again described previously¹². As expected, plasma HexSph (=GlcSph) was found to be clearly increased in all GD patients³. Plasma sphingosine in GD patients was higher than in gender matched controls or FD patients, except for FD females. Plasma sphinganine levels were comparable in the case of controls and LSD patients, except for FD males showing a significantly lower level. Notably, plasma lysoSM and presumed LacSph were significantly elevated in GD patients. The plasma Hex₂Sph was significantly elevated in GD males and females. A much smaller, but significant, elevation was noted for FD males and females. The plasma Hex₂Sph (at least in GD patients) therefore appears to be mostly LacSph and not the indistinguishable Gal₂-Sph; Gal₂-Cer and its base are expected to be increased in FD since they are both substrates of the deficient α -galactosidase A in FD.

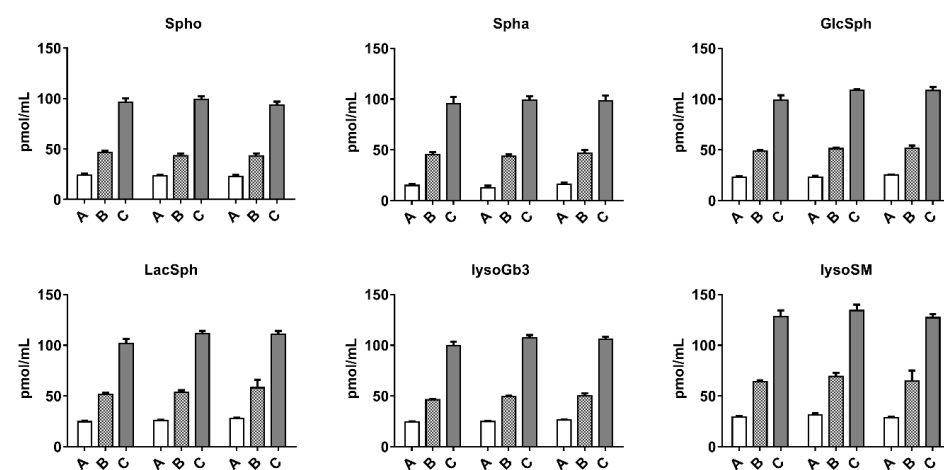


Figure 2. Sphingoid bases in plasma stored for 1 week at different conditions. From left to right bars, samples kept in freezer (-20°C), fridge (4°C) and room temperature. A, B and C are different concentrations of spiked equal amounts of lyso-GSLs in control plasma, 20, 50 and 100 pmol/mL respectively. Presented data were calculated with correction for the appropriate blanks.

Effect of contraceptives in females.

We studied the influence of the oral use of contraceptives (OC) by females on their plasma sphingoid bases. Significantly lower levels of plasma GlcSph were detected in OC females (see figure 4). This difference could not be ascribed to an age difference (see supplemental information figure 2).

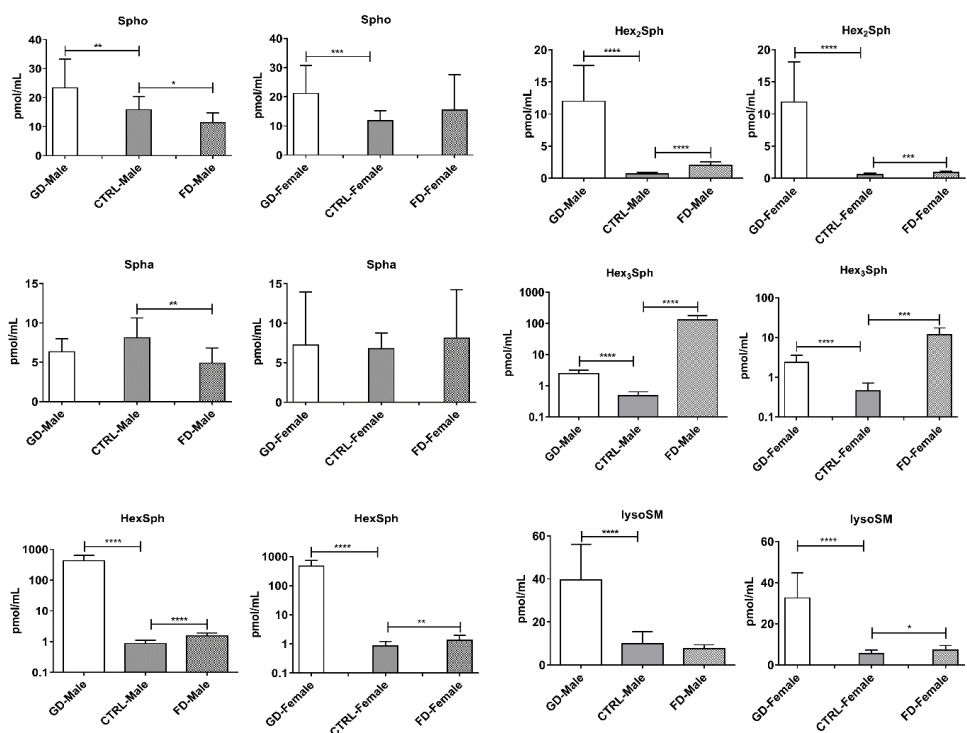


Figure 3. Levels of various sphingoid bases in plasma specimens of male and female control subjects, symptomatic GD and FD patients. Sphingoid bases were simultaneously quantified as described in Materials and Methods. To assist comparison the levels of sphingoid bases in control plasma are depicted as the central bar. Significance of differences: * $P < 0.05$, ** $P < 0.01$, *** $P < 0.001$ and **** $P < 0.0001$.

Concomitant determination of neutral (glyco)sphingolipids in same plasma sample following their deacylation to sphingoid bases.

We next investigated whether the described analysis of sphingoid bases can be used to develop a convenient procedure for accurate quantitation of sphingolipids in the same sample. It is possible to separate sphingolipids and sphingoid bases during extraction, the bases partitioning in the upper water phase and sphingolipids in the lower chloroform phase. Sphingolipids can then be microwave-assisted deacylated^{13,14} and the resulting sphingoid bases can subsequently be analyzed precisely as the sphingoid bases collected from the upper phase of the extraction. Like this, parallel data could be generated for sphingolipid and sphingoid bases in the same sample.

To study the feasibility of this approach, we first spiked C18-Cer, C18-GlcCer, C18-LacCer and C18-Gb3 into normal plasma. Also C17-dhCer was added to be used as alternative internal standard. Following the procedure precisely as defined in M&M, the recoveries of all spiked lipids were high, either when using ¹³C₅ lyso-GSL as internal standard or C17-dhCer as

internal standard to calculate absolute amounts of lipid (see table 1). The linearity of detection was high for Cer, dhCer, GlcCer, LacCer and Gb3, exceeding in all cases 0.96 (see table 3 supplemental information).

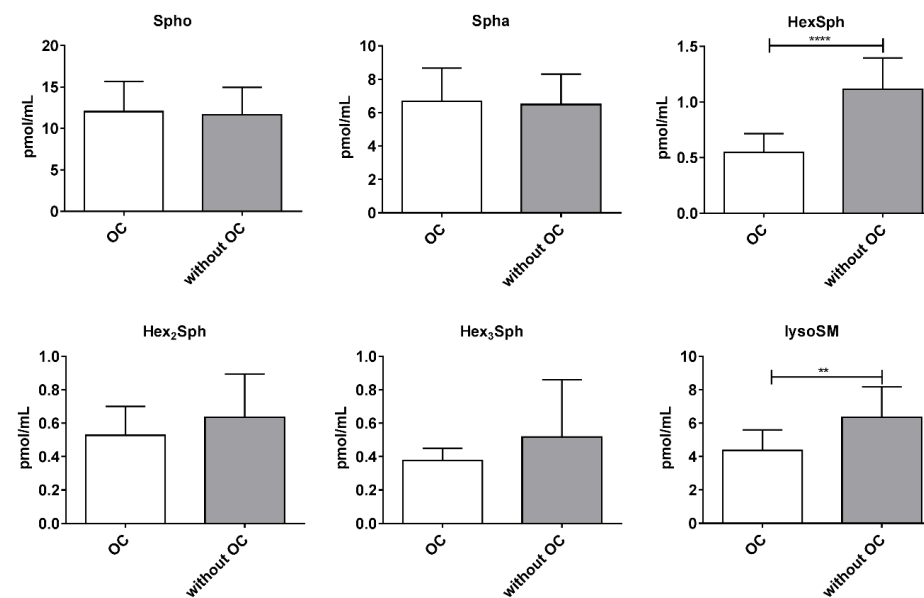


Figure 4. Levels of various sphingoid bases in plasma specimens of female using oral contraceptives (OC) or not. Sphingoid bases were simultaneously quantified as described in Materials and Methods. To assist comparison the levels sphingoid bases in control plasma are depicted as the central bar. Significance of differences: ** $P < 0.01$ and **** $P < 0.0001$.

Table 1. Recovery of spiked sphingolipids lipids.

%	C18-Cer	C18-GlcCer	C18-LacCer	C18-Gb3
¹³ C ₅ lyso-GSL	96.9	84.9	98.8	92.9
C17-dhcer	108.7	99.2	110.7	104.5

Subsequently, we determined the concentrations of endogenous sphingolipids (Cer, dhCer, HexCer, Hex₂Cer and Hex₃Cer) in plasma using ¹³C₅- sphingoid bases as standards in a variety of plasma samples, see table 2. Quite similar data were acquired with C17-dhCer as internal standard (see supplemental information table 4 and figure 3 supplemental information).

Table 2. Quantitation of plasma (glyco)sphingolipids (Cer, dhCer, HexCer, Hex₂Cer and Hex₃Cer).

Plasma sample ¹³ C ₅ lyso-GSLs (IS)		Cer nmol/mL	dhCer nmol/mL	HexCer nmol/mL	Hex ₂ Cer nmol/mL	Hex ₃ Cer nmol/mL
CTRL Male	Mean	5.30	0.57	3.28	1.86	0.63
	SD	0.26	0.04	0.59	0.51	0.32
FD Male 1	Mean	3.18	0.33	2.54	1.71	2.77
	SD	0.14	0.00	0.24	0.15	0.11
FD Male 2	Mean	4.13	0.48	3.51	1.87	0.93
	SD	0.16	0.02	0.43	0.24	0.14
GD Male 1	Mean	2.61	0.42	7.47	1.69	0.50
	SD	0.13	0.01	1.46	0.21	0.04
GD Male 2	Mean	2.59	0.40	8.96	1.77	0.44
	SD	0.05	0.01	1.60	0.33	0.08
CTRL Female	Mean	4.78	0.69	3.82	1.73	0.66
	SD	0.84	0.02	0.43	0.26	0.12
FD Female 1	Mean	4.30	0.50	4.01	2.49	0.94
	SD	0.01	0.00	0.22	0.11	0.03
FD Female 2	Mean	6.28	0.92	4.87	2.13	0.77
	SD	0.21	0.02	0.31	0.36	0.09
GD Female 1	Mean	4.99	0.63	13.61	2.53	0.85
	SD	0.02	0.06	0.18	0.19	0.21
GD Female 2	Mean	2.99	0.51	6.45	1.27	0.36
	SD	0.26	0.00	0.74	0.29	0.08

Discussion

We here show the feasibility of simultaneous quantitation of the sphingoid bases sphinganine, sphingosine, HexSph (GlcSph), Hex₂Sph (LacSph), Hex₃Sph (lysoGb3) and lysoSM in plasma specimens by UPLC-ESI-MS/MS and identical ¹³C₅-encoded internal standards, with the exception of LacSph and lysoSM. For LacSph no isotope-encoded standard was available. In the case of ¹³C₅-lysoSM there was background in plasma and superior quantitation was obtained with C17-lysoSM as standard. The sensitivity and linearity of detection is excellent for all examined sphingoid bases in the relevant concentration range and the measurements display very acceptable intra- and inter-assay variation. Plasma samples of a series of male and female GD and FD patients were analyzed with this multiplex method. The acquired data compare well to those prior determined for plasma lysoGb3 and GlcSph in GD and FD patients^{2,3,12}. Very recently Polo and colleagues described a method for concurrent measurements of HexSph, lysoGb3, lysoSM and lysoSM-509¹¹. Their procedure employs the same equipment as our study, but differs in the used extraction method and the use of a single internal standard (GlcSph from plant source). Polo et al. report rather similar accuracy,

linearity of detection and inter- and intra-assay variation as stated here. They verified the value of their procedure by analysis of plasma from 194 control subjects, 16 FD patients, 10 GD patients, 3 KD patients and 11 NPC patients. The stated values for lysoGb3 and GlcSph in control subjects, GD and FD patients differ somewhat from ours¹¹. For instance, in control plasma the median value for lysoGb3 was 0.29 nmol/L and for HexSph 2.09 nmol/L. In our study, in male control plasma the median value for lysoGb3 (Hex₃Sph) was 0.47 nmol/L and for HexSph 0.87 nmol/L; in female control plasma these were 0.45 nmol/L and 0.84 nmol/L, respectively. Hence, we quantified higher amounts of lysoGb3 but smaller ones for HexSph. These differences might be because of differences in the used internal standards. Theoretically, the use of a non-identical internal standard is less attractive because of possibly needed corrections for sample matrix effects such as ion suppression and in some cases ion enhancement.

Our investigation confirms the occurrence of modestly increased levels of other sphingoid bases (LacSph, lysoGb3 and lysoSM) in plasma of symptomatic GD patients. The levels of lysoGb3 in GD females actually overlap with those in female FD patients. We previously pointed out that caution is needed when interpreting modest elevations in plasma lysoGb3 as confirmative for (atypical) FD^{12,15}. The non-specific modest increases in lysoGb3, LacSph and lysoSM in plasma of GD patients are presumably caused by activation of acid ceramidase in lysosomes of lipid-laden macrophages (Gaucher cells) resulting in deacylation of various sphingolipids¹². Another interesting discovery made in the study is the noted lowering effect of oral contraceptives on plasma GlcSph level. It has been prior reported that OC use is associated with decrease of plasma GlcCer¹⁶. This glycosphingolipid serves as a cofactor for activated protein C (APC), an anti-coagulant. Diminished GlcCer has consequently been proposed to endorse the raised risk of venous thrombosis in females using OCs¹⁶. It has previously been described that estradiol reduces GlcCer by inhibiting its synthesis, while testosterone has contrary effects¹⁷.

Since it is possible to separate sphingolipids and sphingoid bases by differential extraction and the obtained sphingolipids can next be de-acylated, either microwave-assisted or by enzymatic digestion with ceramide N-deacylase^{13,14,18,19}, we looked into the possibility to develop a method for convenient simultaneous quantitation of sphingolipids and sphingoid bases in the same plasma sample. We applied microwave exposure for the de-acylation of extracted sphingolipids. We concluded from the extremely poor recovery of spiked sphingomyelin standard that this procedure cannot be used for this sphingolipid. Nevertheless, for the other (glyco)sphingolipids tested (Cer, GlcCer, LacCer and Gb3) the recovery was excellent and quantitation was linear. Clearly, no data are obtained on the fatty acyl composition of the sphingolipids with this method, but the offered absolute quantitation of sphingolipids is likely superior to that reached by shot gun lipidomics or other methods based on scanning for isoforms of a sphingolipid.

To conclude, sensitive simultaneous quantitation of (glyco)sphingoid bases is feasible with LC-MS/MS using ¹³C-encoded internal standards requiring a small amount of plasma. Potentially an extended method can be developed to also determine absolute amounts of

specific (glyco)sphingolipids after their deacylation and quantitation of the corresponding bases.

Materials and Methods

Chemicals and reagents

LC-MS-grade methanol, 2-propanol, water, formic acid and HPLC-grade chloroform were purchased from Biosolve (Valkenswaard, The Netherlands). LC-MS grade ammonium formate and sodium hydroxide were from Sigma-Aldrich Chemie GmbH (St Louis, USA), butanol and hydrochloric acid were from Merck Millipore (Billerica, USA). C18-lysoSM and C18-lysoGb3 were from Avanti (Albaster, USA). $^{13}\text{C}_5$ -sphinganine, $^{13}\text{C}_5$ -sphingosine, $^{13}\text{C}_5$ -GlcSph and $^{13}\text{C}_5$ -lysoGb3 were synthesized at the Department of Bio-organic Synthesis of the Leiden Institute of Chemistry, Leiden University¹⁰. The label was incorporated in C5, 6, 7, 8, and 9 of the sphingosine backbone (see fig 5). C18-sphingosine, C18-sphinganine, C18-GlcSph, C18-lactosylsphingosine and C17-lysoSM were obtained from Avanti. C17-dihydroceramide (C17-dhCer) was synthesized in house (see scheme 1); C17-sphinganine, C18-ceramide (Cer), C18-glucosylceramide (GlcCer) and Lactosylceramide (LacCer) were purchased from Avanti and C18-globotriaosylceramide (Gb3) from Matreya (State College, USA).

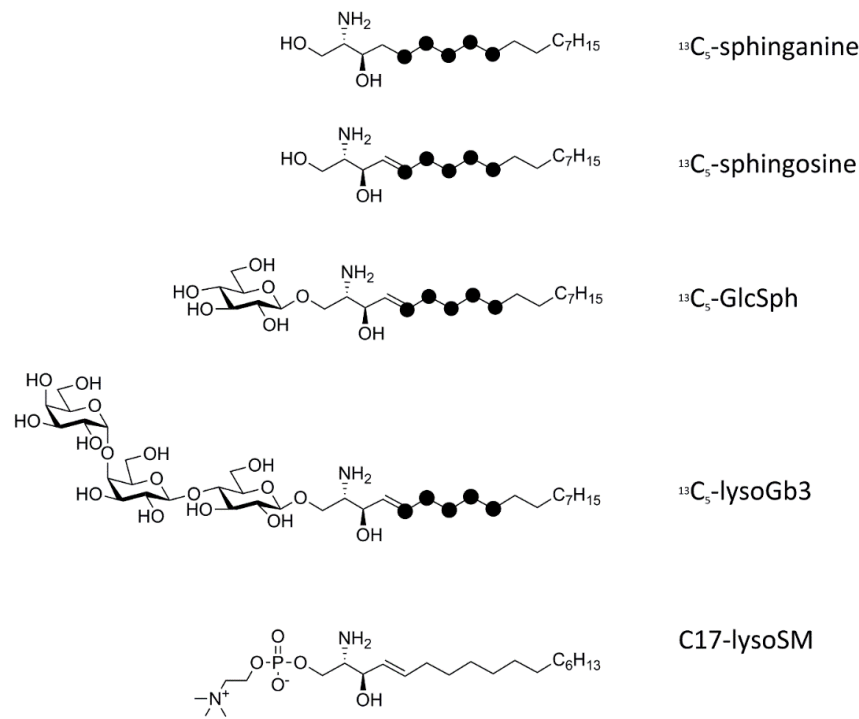
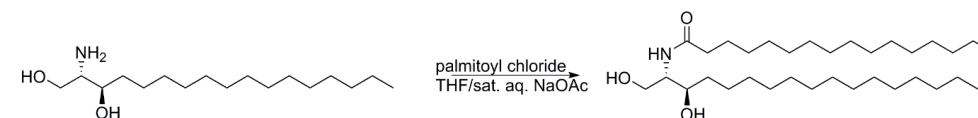


Figure 5. Structures of internal standards.

Synthesis of C17-dihydroceramide

The synthesis of C17-dhCer started with acetylation of commercial C17-sphinganine. C17-sphinganine (5 mg, 0.016 mmol, 1 eq) was dissolved in tetrahydrofuran (THF) (0.2 mL) and sat. aq. NaOAc (0.2 mL), was added. Palmitoyl chloride (6.6 μL , 0.022 mmol, 1.3 eq) was added and the reaction mixture was stirred vigorously at room temperature for 3 hours. The mixture was diluted with THF (5 mL) and washed with water (5 mL). The water layer was extracted with THF (3x 5 mL) and the combined organics were dried (MgSO_4), filtered and concentrated *in vacuo*. The C17-dhCer was purified by silica column chromatography (chloroform to 5% MeOH in chloroform) giving a white solid (6 mg, 0.011 mmol, 72%). $R_f = 0.5$ (5% MeOH in chloroform), ^1H NMR (400 MHz, CDCl_3) δ 6.36 (d, 1 H, $J = 7.6$ Hz), 4.01 (d, 1 H, $J = 11.3$ Hz), 3.83 (m, 1 H), 3.80-3.72 (m, 2 H), 2.90-2.50 (bs, 2 H), 2.23 (t, 2 H, $J = 7.4$ Hz), 1.68-1.59 (m, 4 H), 1.59-1.45 (m, 2 H), 1.38-1.19 (m, 44 H), 0.88 (t, 6 H, $J = 7.2$ Hz); ^{13}C NMR (101 MHz, CDCl_3) δ 173.6, 74.4, 62.7, 54.2, 37.1, 34.7, 32.10, 29.86 x4, 29.84 x3, 29.82 x3, 29.79x 2, 29.75 x3, 29.72, 29.71, 29.67, 29.66, 29.52, 29.51, 29.48, 22.84, 14.2.



Scheme 1. C17-dihydroceramide (C17-dhCer) synthesis.

Samples

All plasma samples were prepared from EDTA-anticoagulated blood by centrifugation and stored at -20 °C until analysis. Approval had been obtained from the institutional ethics committee and informed consent according to the Declaration of Helsinki.

Internal standard mixture

An internal standard mixture (ISM) of isotope-labeled and C17-lysoSM standards was made in methanol containing an equal concentration of each internal standard with the concentration of 0.1 pmol/ μL (0.1 μM). To 50 μL of plasma sample 25 μL of ISM was added as spike. This is 50 nmol/L plasma.

Assay validation

Calibration curves for C18-sphingosine, C18-sphinganine, C18-lysoGb3, C18-LacSph, C18-GlcSph and C18-lysoSM were constructed in plasma of healthy controls: 0-1-2-5-10-20-50-100-200-500-1000 nmol/L. As internal standard ISM (25 μL of 0.1 pmol/ μL) was used. Plasma was spiked with equal amounts of C18 sphingoid bases. Equimolar amounts of C18-sphingosine, C18-sphinganine, C18-lysoGb3, C18-LacSph, C18-GlcSph and C18-lysoSM were added to plasma.

Intra and inter-assay variation

For the determination of intra-assay variation control plasma was spiked with three different concentrations of all C18 bases (A: added 20 pmol/mL, B: added 50 pmol/mL and C: added 100 pmol/mL) and extracted in 6-fold, one without internal standards and five with internal standards. The same control plasma specimen without any spike was also extracted in 6-fold one without internal standards and five with internal standards. Extraction and measurement of samples was repeated on a following day to determine inter-assay variation.

Limit of detection (LOD) and Limit of quantitation (LOQ)

The LOD is defined as signal-to-noise ratio of 3 (peak to peak). The LOQ is defined as signal-to-noise ratio of 10 (peak to peak).

Stability assessment

Samples were tested under three different conditions: freezer (-20°C), fridge (4°C) and room temperature. After preparation of plasma samples, the samples were stored in different conditions for one week. The samples were extracted and measured on the same day. For each condition, three differently spiked plasma controls (A, B and C) were extracted in 6-fold, one without internal standards and five with internal standards. Same control plasma without any spike was also extracted in 6-fold, one without internal standards and five with internal standards.

Studied plasma specimens of healthy volunteers (CTRLs), GD and FD patients

Plasma lyso-sphingolipids were measured for male (n=21) and female CTRLs (n=21), GD (n=10 each gender) and FD patients (n=10 each gender). Of the female CTRLs 10 were using oral contraceptives, and 11 were not.

Lipid extraction

Sphingoid bases were extracted from plasma by a modified Bligh and Dyer extraction²⁰ using acidic buffer (100 mM ammonium formate buffer pH 3.1). Plasma (50 µL) was pipetted into a 1.5 mL Eppendorf tube with a screw cap. Next 25 µL of ISM was added. To this, 350 µL methanol (or 325 µL methanol + 25 µL ISM) and 175 µL chloroform were added and stirred. The sample was subsequently incubated for 10 min at room temperature and stirred occasionally, then centrifuged for 10 min at 15,700 ×g to precipitate protein. The supernatant was transferred to a clean tube, 175 µL chloroform and 265 µL buffer were added. After stirring the sample for 1 min, the tube was centrifuged for 5 min at 15,700 ×g. The upper phase was transferred to a clean tube (extract A). To the lower phase (chloroform phase) 350 µL methanol and 315 µL buffer were added and stirred for 1 min. The sample was then centrifuged for 5 min at 15,700 ×g and the upper phase was removed and pooled with extract A. This was dried at 45 °C in an Eppendorf Concentrator Plus. The residue was further extracted with 500 µL butanol and 500 µL H₂O stirred for 1 min and centrifuged for 5 min at 15,700 ×g. The upper phase (butanol phase) was transferred to a clean tube and taken to dryness in

Eppendorf Concentrator Plus at 45 °C. The residue was dissolved in 100 µL methanol, stirred and sonicated in a bath for 30 seconds and centrifuged for 5 min at 15,700 ×g. Finally, 10 µL of the solution was applied to the UPLC-MS.

Table 3. LC parameters.

UPLC				
Column	Acquity BEH C18 column, 2.1 × 50 mm with 1.7 µm			
Column temperature	23 °C			
Wash	MeOH: H ₂ O (50:50)			
Mobile phase A	H ₂ O, 1 mM ammonium formate, 0.5 % Formic acid			
Mobile phase B	MeOH, 1 mM ammonium formate, 0.5 % Formic acid			
Gradient				
Time (min)	Flow (mL/min)	% A	% B	Curve
Initial	0.25	100	0	Initial
2.5	0.25	0	100	6
5.05	0.25	0	100	6
6.00	0.25	100	0	6
6.50	0.25	100	0	6

Table 4. MS/MS parameters.

MS/MS parameters					
Mass spectrometer	Xevo-TQS-Micro (Waters)				
Ionization mode	ESI ⁺				
Capillary voltage	3.50 kV				
Source temperature	150 °C				
Desolvation temperature	450 °C				
Cone gas flow	50 L/h				
Desolvation gas flow	950 L/h				
Dwell time	0.05 s				
MS Inter-Scan	0.005 s				
Inter-channel delay	0.005 s				
Compound	Parent (m/z)	Daughter (m/z)	Cone voltage (V)	Collision energy (V)	Retention time (min)
Sphingosine	300.3	282.3	20	15	3.39
Sphinganine	302.3	284.3	20	15	3.42
¹³ C ₅ -sphingosine (IS)	305.3	287.3	20	15	3.37
¹³ C ₅ -sphinganine (IS)	307.3	289.3	20	15	3.42
C17-lysoSM (IS)	451.4	184.4	20	25	3.24
lysoSM	465.4	184.4	20	25	3.31
GlcSph	462.3	282.3	30	20	3.33
¹³ C ₅ -GlcSph (IS)	467.3	287.3	30	20	3.33
LacSph	624.4	282.3	43	30	3.28
lysoGb3	786.4	282.3	55	40	3.29
¹³ C ₅ -lysoGb3 (IS)	791.4	287.4	55	40	3.27

LC-MS/MS

Measurements were performed by reverse-phase liquid chromatography with a Waters UPLC-Xevo-TQS micro and a BEH C18 column, 2.1 × 50 mm with 1.7 μm particle size (Waters, USA) using the following eluents: eluent A was 1 mM ammonium formate and 0.5 % formic acid in water. Eluent B was 1 mM ammonium formate and 0.5 % formic acid in methanol. A mobile-phase gradient was used during a 6.50 min run: 0.00 min 0% B; 2.50 min 100% B; 5.05 min 100% B; 6.00 min 0% B; 6.50 min 0% B. The flow rate was 0.25 mL/min. The eluent was diverted to waste between 0.00 and 2.00 min to keep the source free of contaminants; data were collected between 2.00 and 5.05 min, and after 5.05 min the eluent was again diverted to waste. Mass spectrometry detection in positive mode using an electrospray ionization (ESI) source was performed with a Xevo TQS micro instrument. Data were analyzed with Masslynx 4.1 Software (Waters Corporation; Milford MA). All LC and MS/MS parameters are presented in Table 3 and Table 4.

In figure 6 chromatograms of various sphingoid bases and the ¹³C₅ isotope analogues are displayed. Of note, the chromatography used is not able to separate GlcSph and GalSph. Therefore these (HexSph) lipids in biological samples will not be separately quantified. Similarly, the chromatography not necessarily separates Glu-Gal-Sph (LacSph) from Gal-Gal-Sph (Gal₂-Sph). Again, these (Hex₂Sph) lipids are *a priori* not separately quantified. Though lysoSM and GlcSph are not separated by the chromatography, their separate quantitation is feasible by their distinct parent and daughter *m/z* values (see table above).

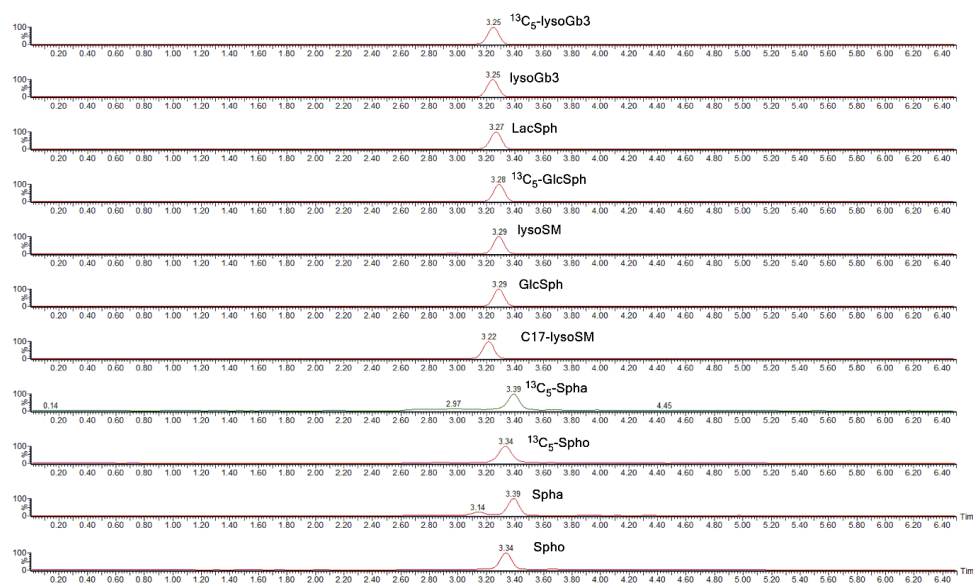


Figure 6. Chromatogram of lyso(glyco)sphingolipids and their internal standards.

Determination of neutral (glyco)sphingolipids (NGSL) in the same sample

Plasma was subjected to the modified Bligh and Dyer extraction precisely as designated above. In some experiments, 50 μL of C17-dhCer (20 μM) was added to the sample to establish efficiency of deacylation, generate calibration curves and for comparison with the use of ¹³C- encoded lyso-lipids as internal standards. The lower phase of the extraction procedure was transferred to a Pyrex tube, dried at 45 °C under the gentle stream of nitrogen gas. The residue was dissolved in 500 μL of methanolic NaOH (0.1 M) by stirring. After putting the screw cap tightly on the tube, the sample was placed in the microwave for 1 hour for deacylation¹³. The sample was cooled down and stirred well. Subsequently, 200 μL of deacylated sample was transferred to a 1.5 mL Eppendorf tube with a screw cap and 20 μL of methanolic HCl (1 M) was added to neutralize the sample. 80 μL of ¹³C₅ lyso-GSL ISM (5 pmol/μL of each standard) was added to the sample. The sample was dried in an Eppendorf concentrator Plus at 45 °C. Then the samples were handled precisely as designated above via butanol extraction and 10 μL of the solution was applied to the UPLC-MS. All plasma samples were extracted in duplicate. Pooled plasma of normal males (two sets of 4 individuals), pooled plasma of 4 healthy females using a contraceptive and that of 4 females not using a contraceptive was analyzed. Moreover, plasma of 2 male GD patients, 2 female GD patients, 2 male FD patients and 2 female FD patients were analyzed (see supplemental information figure 1).

Calibration curves of NGSL in normal control plasma were constructed as follows. Normal plasma was spiked with a mixture of C18-Cer, C18-GlcCer, C18-LacCer, C18-Gb3 (1pmol/μL). The concentrations of each NGSL were 0-0.2-0.4-1-2-5-10-20 nmol/mL plasma. NGSL and C17-dhCer were added before acidic extraction. Deacylation of C17-dhCer to C17-Spha was monitored by detection of *m/z* 288.3 > 270.3 (cone (v) 20, Collision(v) 15). The mixture of ¹³C₅ lyso-GSL ISM was added after the microwave step.

Statistical Analysis

Values in figures are presented as mean ± S.D. Data were analyzed by unpaired Student's *t*-test using GraphPad Prism. *P* values < 0.05 were considered significant. * *P* < 0.05, ** *P* < 0.01, *** *P* < 0.001 and **** *P* < 0.0001.

Funding

This work was supported by the ERC Advanced Grant (2011) CHEMBIOSPHING.

References

1. Aerts, J. M. *et al.* Elevated globotriaosylsphingosine is a hallmark of Fabry disease. *Proc. Natl. Acad. Sci.* **105**, 2812–2817 (2008).
2. Gold, H. *et al.* Quantification of Globotriaosylsphingosine in Plasma and Urine of Fabry Patients by Stable Isotope Ultrapformance Liquid Chromatography-Tandem Mass Spectrometry. *Clin. Chem.* **59**, 547–556 (2013).

3. Mirzaian, M. *et al.* Mass spectrometric quantification of glucosylsphingosine in plasma and urine of type 1 Gaucher patients using an isotope standard. *Blood Cells, Mol. Dis.* **54**, 307–314 (2015).
4. Ferraz, M. J. *et al.* Gaucher disease and Fabry disease: New markers and insights in pathophysiology for two distinct glycosphingolipidoses. *Biochim. Biophys. Acta - Mol. Cell Biol. Lipids* **1841**, 811–825 (2014).
5. Igisu, H. & Suzuki, K. Analysis of galactosylsphingosine (psychosine) in the brain. *J. Lipid Res.* **25**, 1000–6 (1984).
6. Chuang, W.-L. *et al.* Determination of psychosine concentration in dried blood spots from newborns that were identified via newborn screening to be at risk for Krabbe disease. *Clin. Chim. Acta.* **419**, 73–6 (2013).
7. Chuang, W.-L. *et al.* Lyso-sphingomyelin is elevated in dried blood spots of Niemann-Pick B patients. *Mol. Genet. Metab.* **111**, 209–11 (2014).
8. Vanier, M. T. *et al.* Diagnostic tests for Niemann-Pick disease type C (NP-C): A critical review. *Mol. Genet. Metab.* **118**, 244–54 (2016).
9. Welford, R. W. D. *et al.* Plasma lysosphingomyelin demonstrates great potential as a diagnostic biomarker for Niemann-Pick disease type C in a retrospective study. *PLoS One* **9**, e114669 (2014).
10. Wisse, P. *et al.* Synthesis of a Panel of Carbon-13-Labelled (Glyco)Sphingolipids. *European J. Org. Chem.* **2015**, 2661–2677 (2015).
11. Polo, G. *et al.* Diagnosis of sphingolipidoses: a new simultaneous measurement of lysosphingolipids by LC-MS/MS. *Clin. Chem. Lab. Med.* **55**, 403–414 (2017).
12. Ferraz, M. J. *et al.* Lysosomal glycosphingolipid catabolism by acid ceramidase: formation of glycosphingoid bases during deficiency of glycosidases. *FEBS Lett.* **590**, 716–25 (2016).
13. Groener, J. E. M. *et al.* HPLC for simultaneous quantification of total ceramide, glucosylceramide, and ceramide trihexoside concentrations in plasma. *Clin. Chem.* **53**, 742–7 (2007).
14. Taketomi, T., Hara, A., Uemura, K., Kurahashi, H. & Sugiyama, E. A microwave-mediated saponification of galactosylceramide and galactosylceramide 13-sulfate and identification of their lyso-compounds by delayed extraction matrix-assisted laser desorption ionization time-of-flight mass spectrometry. *Biochem. Biophys. Res. Commun.* **224**, 462–7 (1996).
15. Schiffmann, R., Fuller, M., Clarke, L. A. & Aerts, J. M. F. G. Is it Fabry disease? *Genet. Med.* **18**, 1181–1185 (2016).
16. Deguchi, H., Bouma, B. N., Middeldorp, S., Lee, Y. M. & Griffin, J. H. Decreased plasma sensitivity to activated protein C by oral contraceptives is associated with decreases in plasma glucosylceramide. *J. Thromb. Haemost.* **3**, 935–8 (2005).
17. Shukla, A., Shukla, G. S. & Radin, N. S. Control of kidney size by sex hormones: possible involvement of glucosylceramide. *Am. J. Physiol.* **262**, F24-9 (1992).
18. Wing, D. R. *et al.* High-performance liquid chromatography analysis of ganglioside carbohydrates at the picomole level after ceramide glycanase digestion and fluorescent labeling with 2-aminobenzamide. *Anal. Biochem.* **298**, 207–17 (2001).
19. Zama, K. *et al.* Simultaneous quantification of glucosylceramide and galactosylceramide by normal-phase HPLC using O-phtalaldehyde derivatives prepared with sphingolipid ceramide N-deacylase. *Glycobiology* **19**, 767–75 (2009).
20. Bligh, E. G. & Dyer, W. J. A RAPID METHOD OF TOTAL LIPID EXTRACTION AND

PURIFICATION. *Can. J. Biochem. Physiol.* **37**, 911–917 (1959).

Supplemental Data

Supplementary Table 1. Intra-assay and inter-assay variation in pmol/mL (n=5).

Compound	Assay	Mean	SD	CV%	Mean	SD	CV%	Mean	SD	CV%
		A			B			C		
Sphingosine	Intra	26.76	1.14	4.26	48.89	2.14	4.38	111.65	2.86	2.56
	Inter	25.41	1.92	7.56	47.82	1.51	3.16	104.05	10.75	10.33
Sphinganine	Intra	17.13	2.49	14.54	50.38	2.18	4.33	100.53	4.90	4.87
	Inter	16.02	1.57	9.80	47.86	3.55	7.42	98.07	3.47	3.54
GlcSph	Intra	28.15	1.54	5.47	57.32	0.77	1.34	120.5	2.10	1.74
	Inter	25.54	3.69	14.45	52.92	6.22	11.75	109.82	15.11	13.76
lysoSM	Intra	28.02	2.01	7.17	65.30	3.94	6.03	141.52	11.09	7.84
	Inter	28.70	0.95	3.31	64.71	0.83	1.28	134.84	9.45	7.01
LacSph	Intra	29.59	1.09	3.68	56.01	1.13	2.02	118.86	3.76	3.16
	Inter	27.14	3.46	12.75	53.77	3.17	5.90	110.34	12.05	10.92
lysoGb3	Intra	31.55	1.21	3.84	59.17	1.22	2.10	130.78	4.08	3.12
	Inter	28.08	4.91	17.49	52.77	9.05	17.15	115.09	22.19	19.28

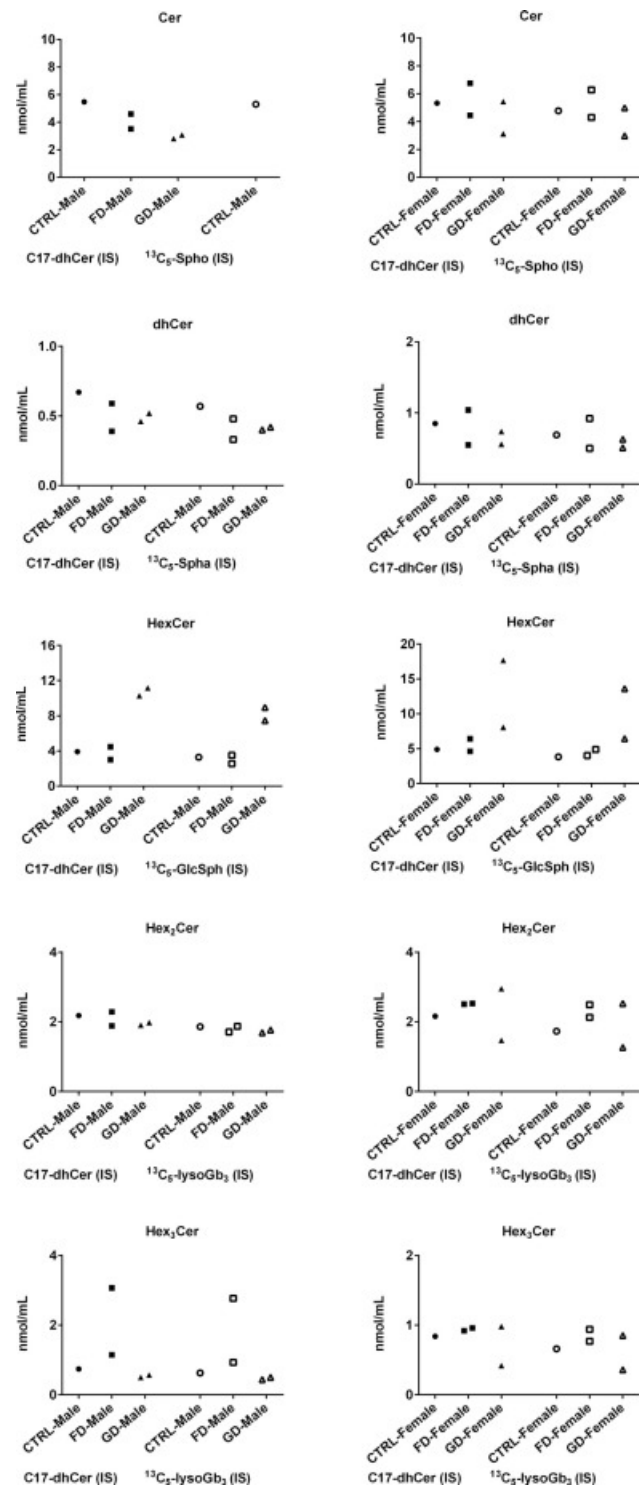


Figure S1. Plasma NGSLs.

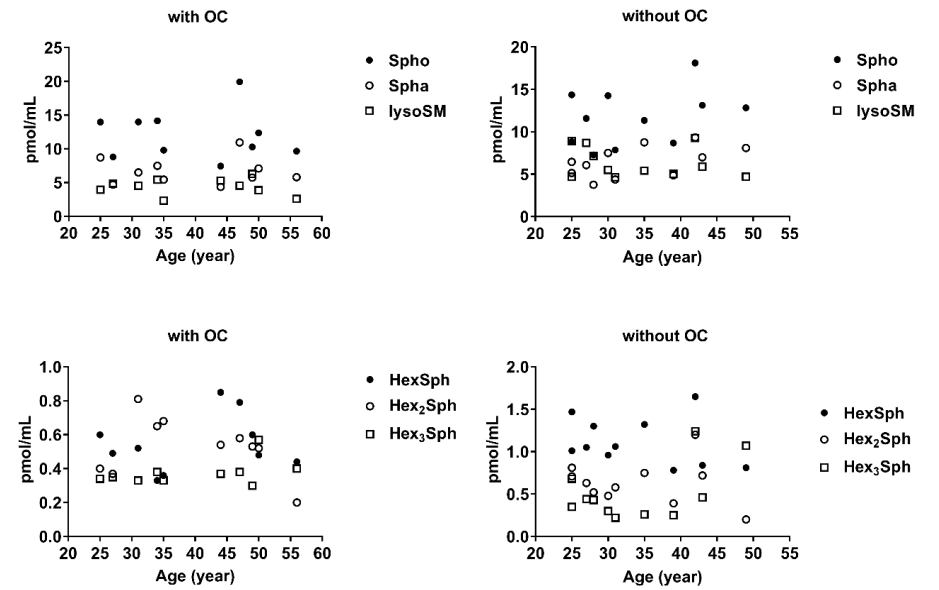


Figure S2. Plasma sphingoid bases female with OC versus without OC.

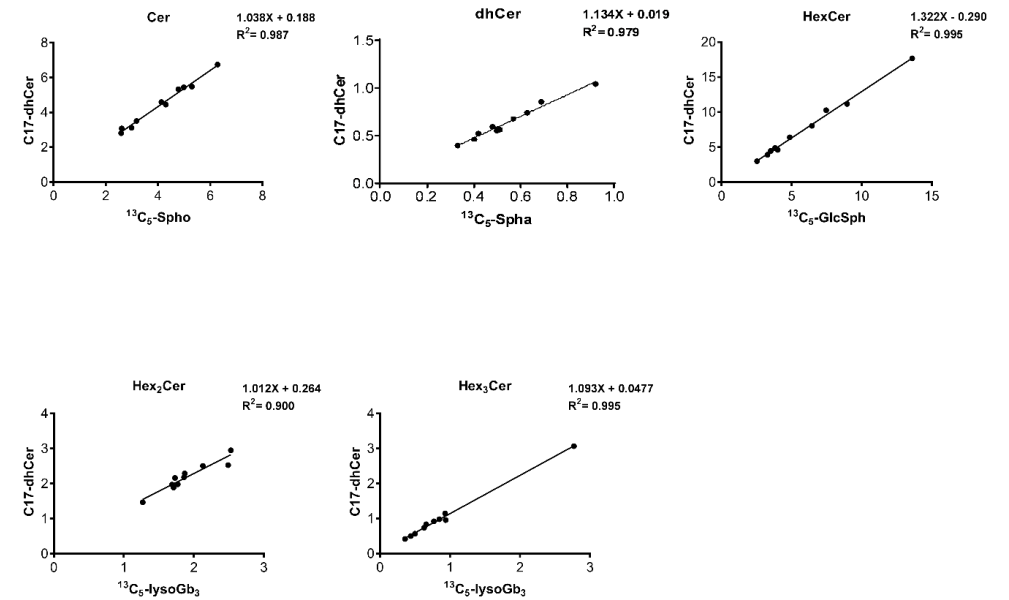


Figure S3. Comparison concentration (in nmol/mL) of NGSLs in human plasma calculated with both internal standards, ¹³C₅ lyso-GSLs versus C17-dhCer as the internal standards.

Supplementary Table 2. Stability test in pmol/mL (n=5).

Compound	Assay	Mean	SD	Mean	SD	Mean	SD
		A		B		C	
Sphingosine	-20°C	24.05	1.51	46.75	1.58	96.45	3.68
	4°C	23.55	0.90	43.47	2.03	99.34	2.83
	RT	22.95	1.56	43.01	2.44	93.52	3.56
Sphinganine	-20°C	14.91	1.13	45.35	2.36	95.62	6.64
	4°C	12.81	1.92	43.61	1.93	99.08	3.80
	RT	16.18	1.80	46.95	2.96	98.13	5.27
GlcSph	-20°C	22.93	0.93	48.53	1.43	99.13	4.67
	4°C	23.23	1.07	51.17	0.96	108.69	0.84
	RT	25.25	0.49	51.64	2.72	108.44	3.56
lysoSM	-20°C	29.37	0.94	64.12	1.29	128.15	6.30
	4°C	31.36	1.80	69.27	3.57	134.19	5.93
	RT	28.38	0.90	64.93	10.24	127.22	3.52
LacSph	-20°C	24.70	0.94	51.53	1.57	101.82	4.40
	4°C	25.98	0.42	53.57	2.06	111.44	2.76
	RT	28.04	0.53	58.24	7.83	110.85	3.33
lysoGb3	-20°C	24.61	0.35	46.37	0.41	99.40	4.14
	4°C	24.75	0.82	49.48	0.75	107.4	2.63
	RT	26.23	0.75	49.97	2.58	105.64	2.85

Supplementary Table 3. NGSLs linearity of detection.

R ² of calibration line	C17-dhCer as IS	¹³ C ₅ lyso-GSL as IS
Cer	0.993	0.998
GlcCer	0.962	0.977
LacCer	0.970	0.976
Gb3	0.991	0.995

Supplementary Table 4. Concentration of NGSLs in human plasma.

Gender		C17-dhCer (IS)					¹³ C ₅ lyso-GSLs (IS)				
		Cer nmol/mL	dhCer nmol/mL	HexCer nmol/mL	Hex ₂ Cer nmol/mL	Hex ₃ Cer nmol/mL	Cer nmol/mL	dhCer nmol/mL	HexCer nmol/mL	Hex ₂ Cer nmol/mL	Hex ₃ Cer nmol/mL
CTRL Male	Mean	5.48	0.67	3.92	2.18	0.74	5.30	0.57	3.28	1.86	0.63
	SD	0.37	0.02	0.67	0.50	0.34	0.26	0.04	0.59	0.51	0.32
FD Male 1	Mean	3.51	0.39	3.00	1.89	3.07	3.18	0.33	2.54	1.71	2.77
	SD	0.15	0.01	0.29	0.26	0.27	0.14	0.00	0.24	0.15	0.11
FD Male 2	Mean	4.60	0.59	4.47	2.29	1.15	4.13	0.48	3.51	1.87	0.93
	SD	0.16	0.02	0.58	0.29	0.15	0.16	0.02	0.43	0.24	0.14
GD Male 1	Mean	3.08	0.52	10.28	1.91	0.57	2.61	0.42	7.47	1.69	0.50
	SD	0.09	0.01	2.07	0.38	0.09	0.13	0.01	1.46	0.21	0.04
GD Male 2	Mean	2.81	0.46	11.17	1.98	0.50	2.59	0.40	8.96	1.77	0.44
	SD	0.07	0.01	1.02	0.29	0.06	0.05	0.01	1.60	0.33	0.08
CTRL Female	Mean	5.33	0.85	4.89	2.16	0.84	4.78	0.69	3.82	1.73	0.66
	SD	1.07	0.03	0.78	0.39	0.15	0.84	0.02	0.43	0.26	0.12
FD Female 1	Mean	4.45	0.55	4.62	2.53	0.96	4.30	0.50	4.01	2.49	0.94
	SD	0.11	0.00	0.21	0.12	0.02	0.01	0.00	0.22	0.11	0.03
FD Female 2	Mean	6.75	1.04	6.41	2.51	0.92	6.28	0.92	4.87	2.13	0.77
	SD	0.41	0.02	0.30	0.20	0.02	0.21	0.02	0.31	0.36	0.09
GD Female 1	Mean	5.44	0.74	17.67	2.95	0.98	4.99	0.63	13.61	2.53	0.85
	SD	0.46	0.03	1.37	0.23	0.09	0.02	0.06	0.18	0.19	0.21
GD Female 2	Mean	3.12	0.56	8.06	1.47	0.42	2.99	0.51	6.45	1.27	0.36
	SD	0.13	0.02	1.01	0.33	0.09	0.26	0.00	0.74	0.29	0.08