



Universiteit  
Leiden  
The Netherlands

## Kenya, Uganda and Tanganyika 1935-1963

Dietz, A.J.

### Citation

Dietz, A. J. (2017). Kenya, Uganda and Tanganyika 1935-1963. *African Postal Heritage (Aph) Papers*. Retrieved from <https://hdl.handle.net/1887/52108>

Version: Not Applicable (or Unknown)

License: [Leiden University Non-exclusive license](#)

Downloaded from: <https://hdl.handle.net/1887/52108>

**Note:** To cite this publication please use the final published version (if applicable).



Universiteit  
Leiden



African Studies Centre Leiden

# African Postal Heritage

APH Paper nr 21

Ton Dietz

Kenya, Uganda and Tanganyika 1935-1963  
Version July 2017

## Introduction

Postage stamps and related objects are miniature communication tools, and they tell a story about cultural and political identities and about artistic forms of identity expressions. They are part of the world's material heritage, and part of history. Ever more of this postal heritage becomes available online, published by stamp collectors' organizations, auction houses, commercial stamp shops, online catalogues, and individual collectors. Virtually collecting postage stamps and postal history has recently become a possibility. These working papers about Africa are examples of what can be done. But they are work-in-progress! Everyone who would like to contribute, by sending corrections, additions, and new area studies can do so by sending an email message to the APH editor: Ton Dietz (dietzaj@asc.leidenuniv.nl). You are welcome!

Disclaimer: illustrations and some texts are copied from internet sources that are publicly available. All sources have been mentioned. If there are claims about the copy rights of these sources, please send an email to asc@asc.leidenuniv.nl, and, if requested, those illustrations will be removed from the next version of the working paper concerned.

African Studies Centre Leiden  
P.O. Box 9555  
2300 RB Leiden  
The Netherlands

|               |   |
|---------------|---|
| Telephone     | +31-71-5273372  |
| E-mail        | asc@asc.leidenuniv.nl   |
| Website       | <a href="http://www.ascleiden.nl">http://www.ascleiden.nl</a>                     |
| Facebook      | <a href="http://www.facebook.nl/ascleiden">www.facebook.nl/ascleiden</a>          |
| Twitter       | <a href="http://www.twitter.com/ascleiden">www.twitter.com/ascleiden</a>          |
| Countryportal | <a href="http://countryportal.ascleiden.nl">http://countryportal.ascleiden.nl</a> |

Illustrations cover page:

ASC Leiden postage stamp Nederland (2011): ©African Studies Centre Leiden

Cape of Good Hope postage stamp 1853:

[http://upload.wikimedia.org/wikipedia/commons/thumb/7/7c/Cape\\_Triangular\\_Postage\\_Stamp.jpg/400px-Cape\\_Triangular\\_Postage\\_Stamp.jpg](http://upload.wikimedia.org/wikipedia/commons/thumb/7/7c/Cape_Triangular_Postage_Stamp.jpg/400px-Cape_Triangular_Postage_Stamp.jpg)

Egypt postage stamp 1914:

[https://upload.wikimedia.org/wikipedia/commons/4/4b/Post\\_Stamp\\_Egypt.jpg](https://upload.wikimedia.org/wikipedia/commons/4/4b/Post_Stamp_Egypt.jpg)

## **Table of Contents**

**Kenya, Uganda and Tanganyika 1935-1963** 1

**Inventory of Post Offices and postmarks in East Africa**

**Information about postal services and post offices in Kenya, Uganda and Tanzania**

-----

For German East Africa and follow up: see APH 3

For Kenya and Uganda prior to 1935 see APH 17 and 18

For Tanganyika/Tanzania postmarks see APH 19

For Zanzibar see APH 20

[ Catalogue numbers refer to Michel Katalog Nord- und Ostafrika 2005, pp. 965-969)



<https://s-media-cache-ak0.pinimg.com/236x/67/29/a1/6729a128b90af0484500bb9f6b28728c.jpg>

### 1935 King George V and local images

M31-M44 (earlier M numbers refer to 'Kenya and Uganda')



<http://img.collectorcircuit.com/files/raritan-stamps-inc./stampauction/stamp-auction-61/92.jpg>





<https://assets.catawiki.nl/assets/2011/10/28/3/9/8/3983f6b0-e394-012e-aea0-0050569439b1.jpg>



<http://www.stamps-for-sale.com/ekmps/shops/stewcoin/images/kenya-uganda-tanganyika-1935-king-george-v-sg-111-fine-used-28254-p.jpg>

[http://www.stamps-for-sale.com/ekmps/shops/stewcoin/images/kenya-uganda-tanganyika-1935-king-george-v-sg-112-fine-mint-55186-p\[ekm\]325x400\[ekm\].jpg](http://www.stamps-for-sale.com/ekmps/shops/stewcoin/images/kenya-uganda-tanganyika-1935-king-george-v-sg-112-fine-mint-55186-p[ekm]325x400[ekm].jpg)

<http://www.stamps-for-sale.com/ekmps/shops/stewcoin/images/kenya-uganda-tanganyika-1935-king-george-v-sg-113-fine-used-28258-p.jpg>



<http://www.stamps-for-sale.com/ekmps/shops/stewcoin/images/kenya-uganda-tanganyika-1935-king-george-v-sg-114-fine-mint-55188-p.jpg>

<https://assets.catawiki.nl/assets/2011/2/17/c/b/b/cbb33560-1cc6-012e-9066-0050569439b1.jpg>

<http://i.ebayimg.com/images/g/cuWAAOSwGy5Y8eS0/s-l1600.jpg>



<https://assets.catawiki.nl/assets/2011/10/28/f/0/9/f0937680-e398-012e-bca3-0050569439b1.jpg>

<http://thumbs.ebaystatic.com/images/g/p9gAAOSwpDdVGmpJ/s-l225.jpg>



<https://assets.catawiki.nl/assets/2015/8/25/5/f/4/5f44116e-4b0f-11e5-95b8-adc56ad375a3.jpg>

<https://s-media-cache-ak0.pinimg.com/236x/e4/c0/4d/e4c04d9c023820e37c052ed2628091c7.jpg>



<https://assets.catawiki.nl/assets/2013/12/27/8/3/c/83ce5184-6f2e-11e3-9a4e-17805c9502bf.jpg>

<https://assets.catawiki.nl/assets/2013/12/27/4/5/0/450ebd0c-6f2f-11e3-93f9-cb360f888cfc.jpg>

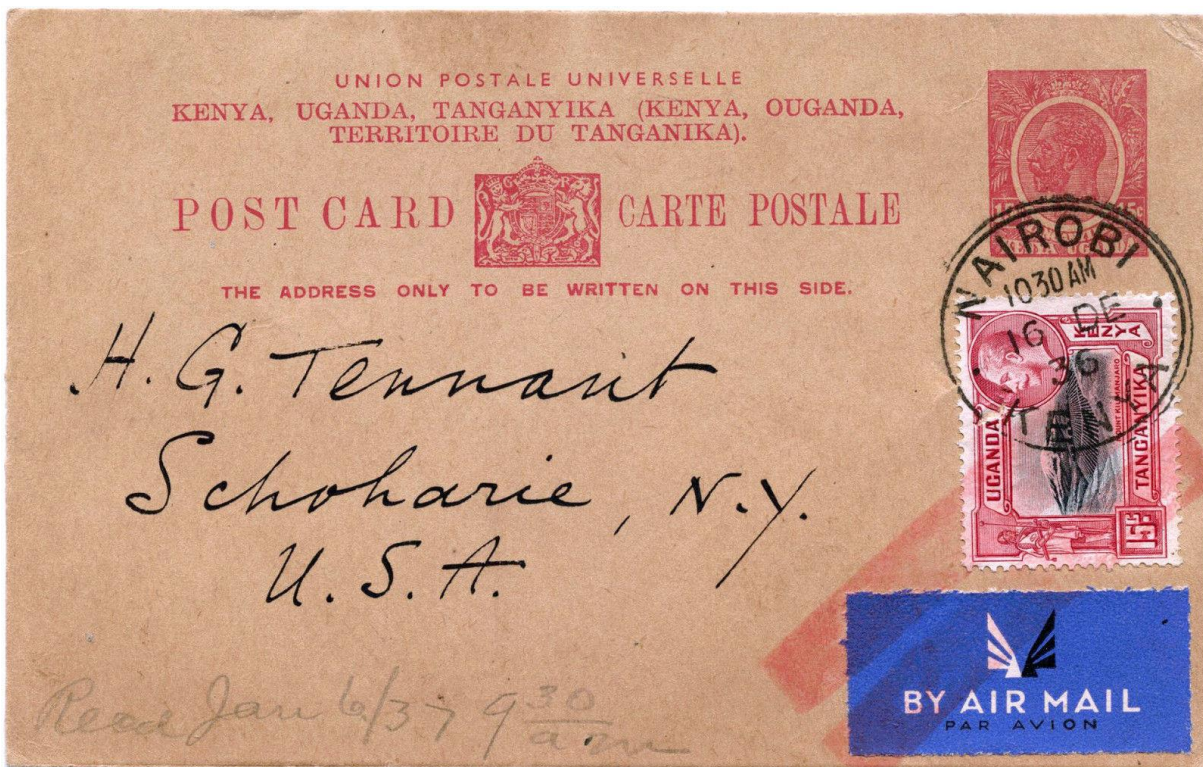
<https://assets.catawiki.nl/assets/2013/12/27/8/9/b/89b365ec-6f30-11e3-9e70-ca1db6381fb7.jpg>



### 1935 Postal Stationery



<http://www.chrisrainey.com/images/525.jpg>



<http://i.ebayimg.com/images/g/2qgAAOxy63FSrkfH/s-l1600.jpg>





<https://i.ebayimg.com/thumbs/images/g/r-CAOSwB-1Y3-VX/s-l225.jpg>

[https://www.premierpostal.com/jpg1068/KENYA\\_UGANDA\\_and\\_TANGANYIKA\\_-\\_Postal\\_Stationery\\_-\\_Envelopes\\_1935\\_KGV\\_1068884\\_.jpg](https://www.premierpostal.com/jpg1068/KENYA_UGANDA_and_TANGANYIKA_-_Postal_Stationery_-_Envelopes_1935_KGV_1068884_.jpg)

### 1935 Postage stamps used for Revenue purposes



<http://www.revrevd.com/uploads/3/2/2/0/3220955/2805862.jpg?579>



<http://www.revrevd.com/uploads/3/2/2/0/3220955/1744962.jpg?396>

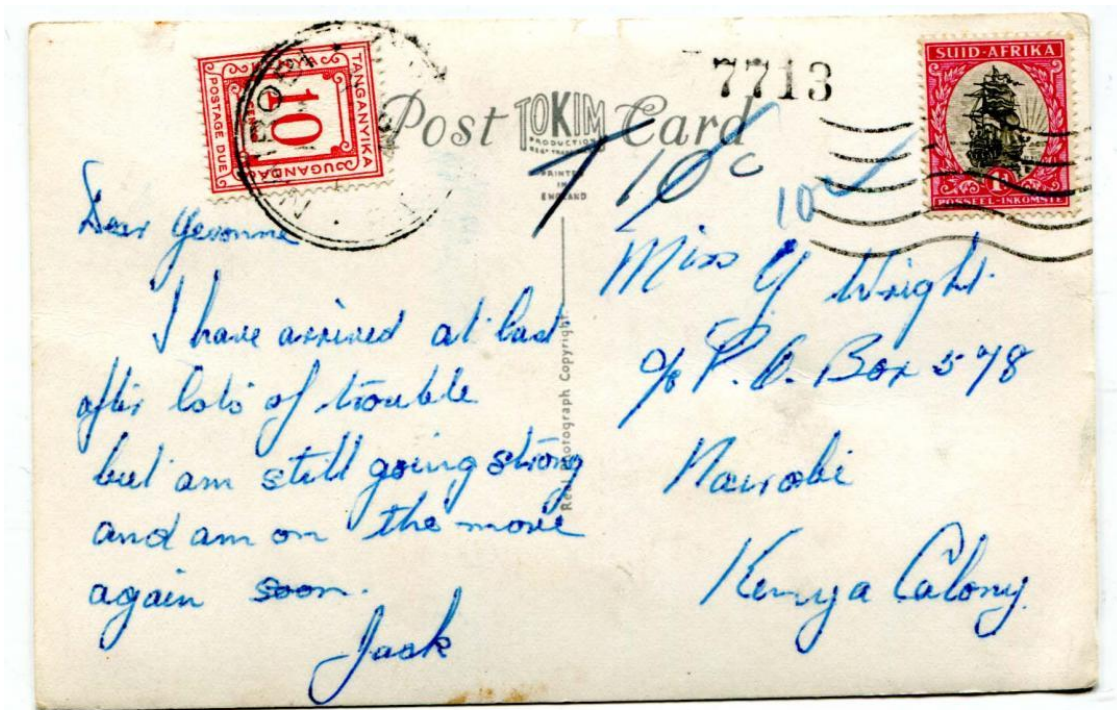
### 1935 Postal Due stamps

M P7-12





<http://www.stamps-for-sale.com/ekmps/shops/stewcoin/images/kenya-uganda-tanganyika-1935-postage-due-set-fine-mint-36132-p.jpg>



<http://www.chrisrainey.com/images/6932.jpg>



## 1935 25 Years King George V

M45-48



<http://www.stamps-for-sale.com/ekmps/shops/stewcoin/images/kenya-uganda-and-tanganyika-1935-king-george-v-silver-jubilee-set-fine-mint-1037-p.jpg>

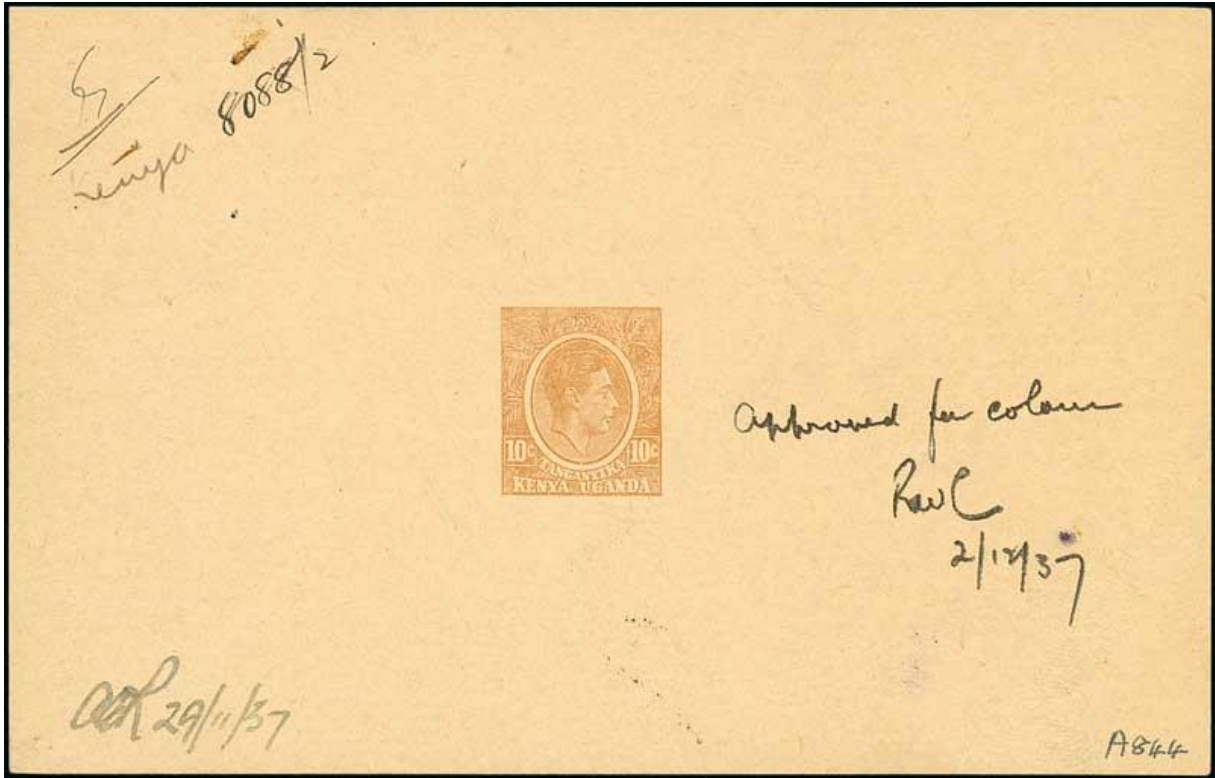
## 1937 Coronation King George VI and Queen Elisabeth

M49-51

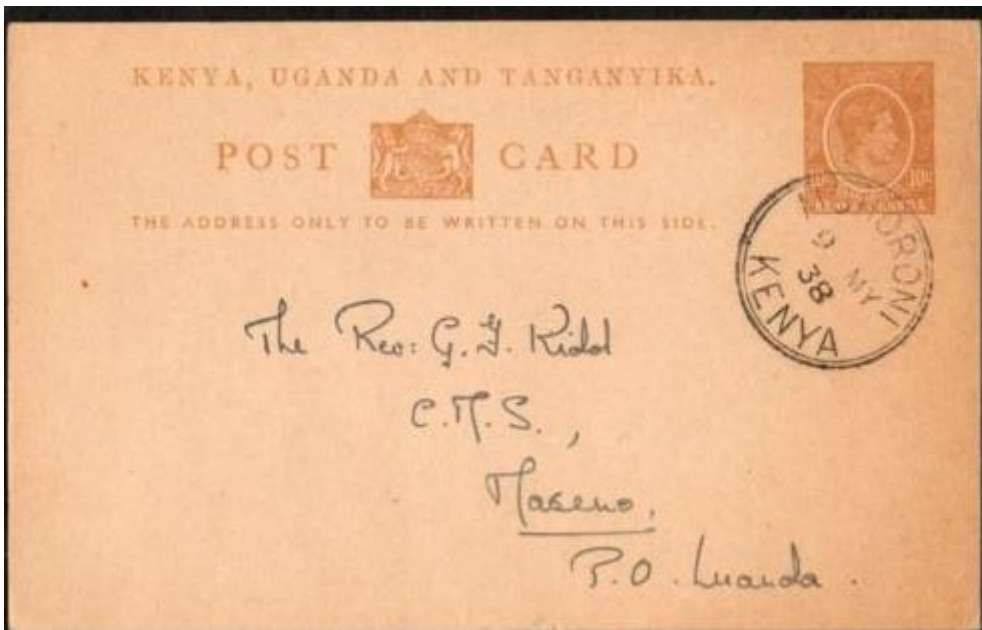


<https://assets.catawiki.nl/assets/2017/5/21/f/2/1/f21eecb6-3e06-11e7-8d0c-ba7617f337cb.jpg>

### 1937 Postal stationery



<http://www.auction-net.co.uk/images/extra/Argyll%20Etkin%206th%20March/1392.jpg>

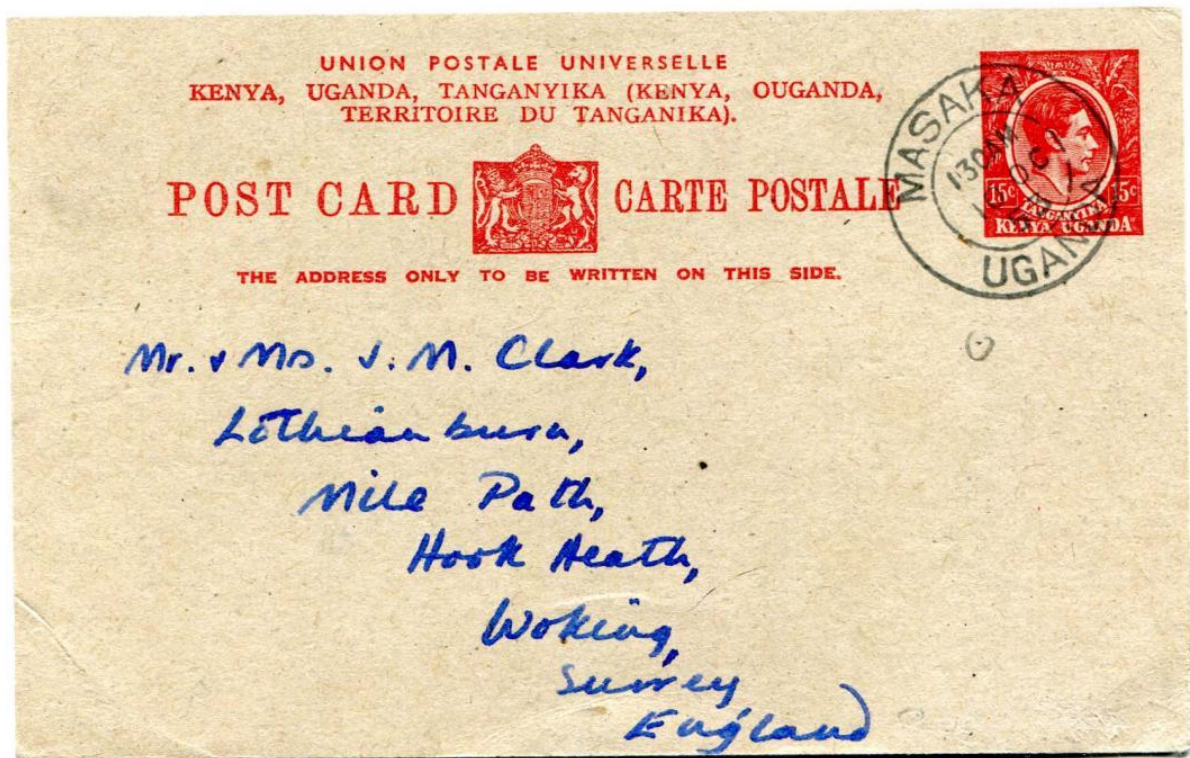


<http://www.postmarks.co.za/images/Muhoroni%201938%20card.jpg>

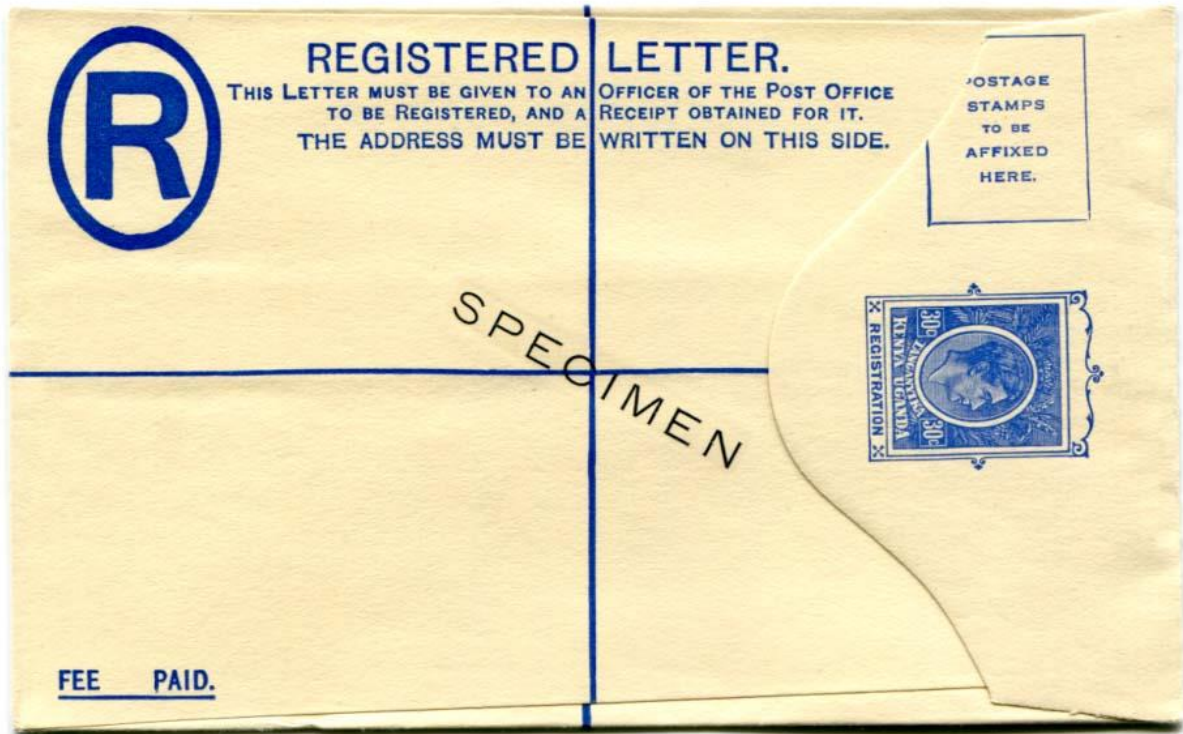




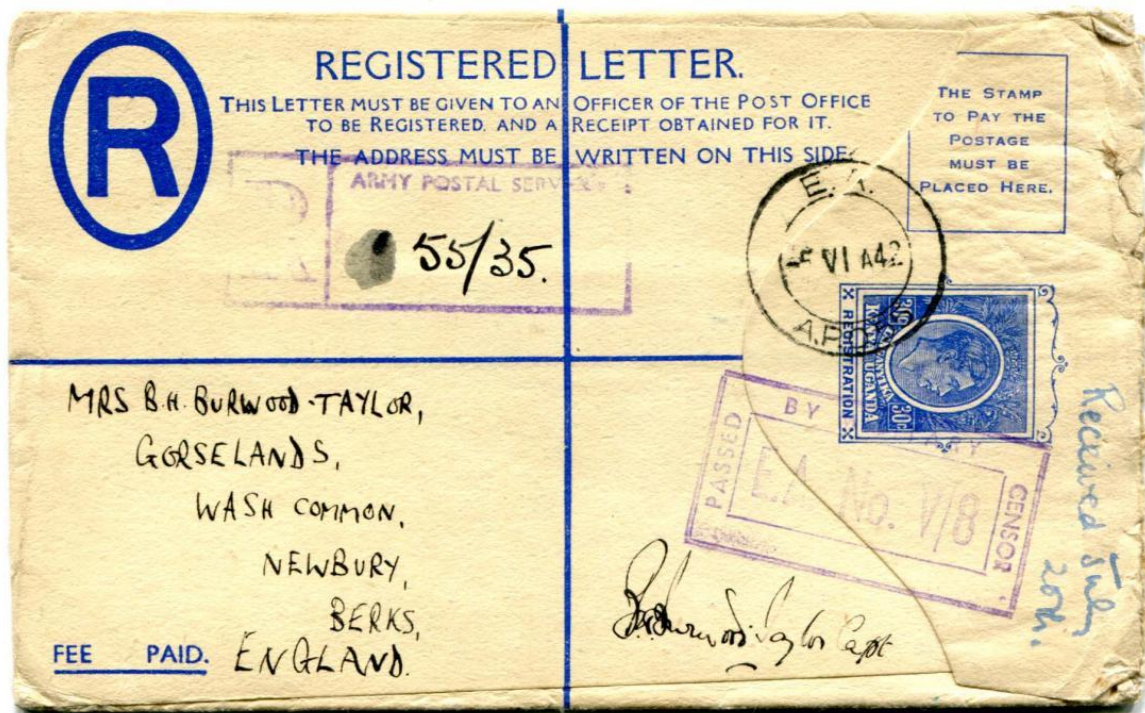
<https://i.ebayimg.com/thumbs/images/g/wVwAAOSwA29Y4ZY3/s-l225.jpg>



<http://www.chrisrainey.com/images/3538.jpg>



<http://www.chrisrainey.com/images/1503.jpg>



<http://www.chrisrainey.com/images/6312.jpg>





<http://www.chrisrainey.com/images/5697.jpg>

### 1937 Uganda Revenue



<http://www.revrevd.com/uploads/3/2/2/0/3220955/7533779.jpg?195>

### 1938 King George VI and local landscapes

M52-M71





<https://assets.catawiki.nl/assets/2016/2/26/7/f/2/7f25ea94-dc1d-11e5-9a26-e15b808dc1c4.jpg>



<http://www.auction-net.co.uk/images/extra/Argyll%20Etkin%206th%20March/1373.jpg>



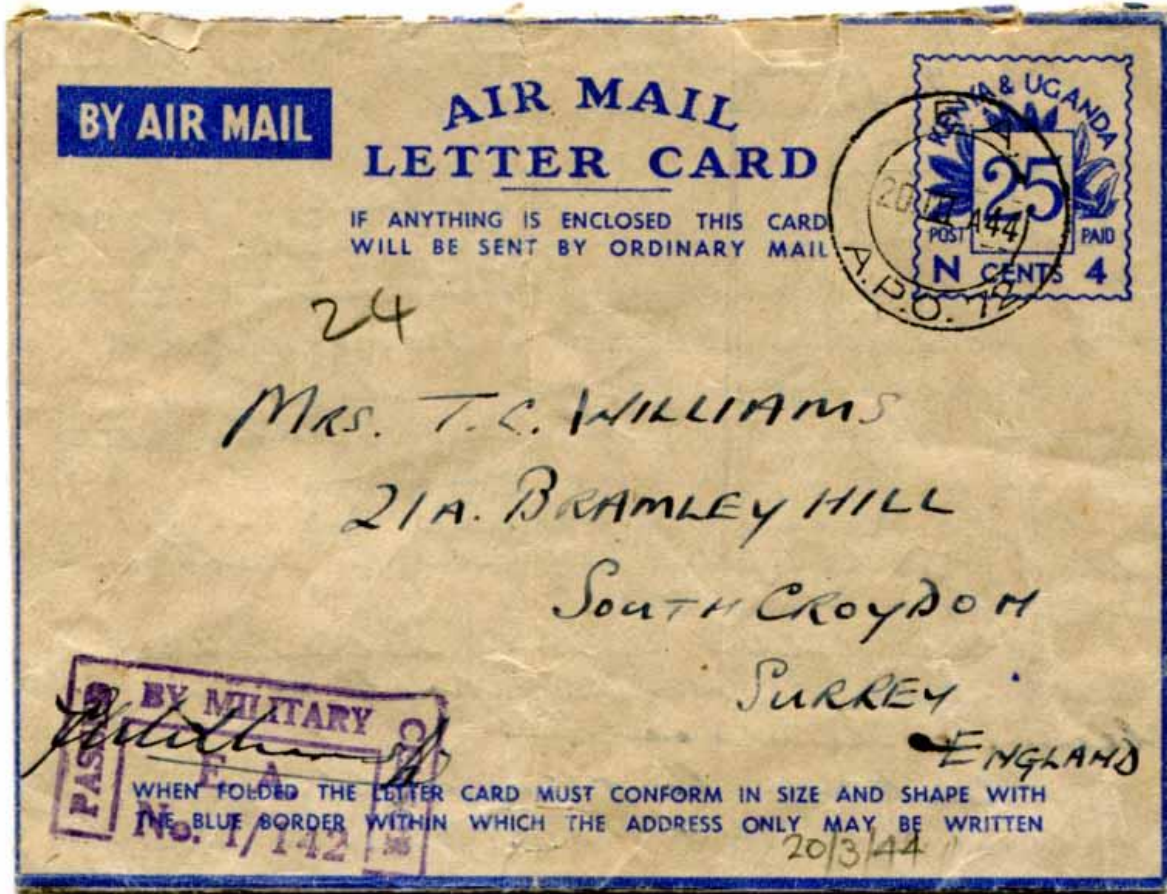


<http://www.auction-net.co.uk/images/extra/Argyll%20Etkin%206th%20March/1357.jpg>



<http://www.chrisrainey.com/images/2213.jpg>



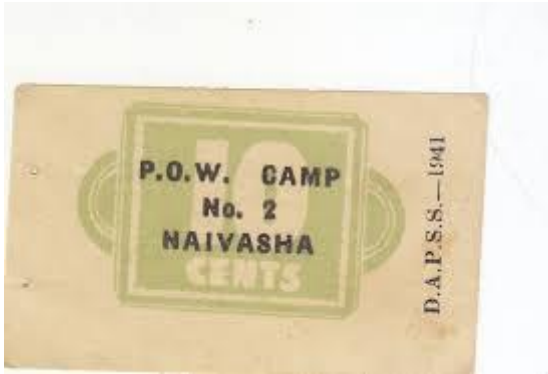


<http://www.chrisrainey.com/images/84.jpg>



<http://www.chrisrainey.com/images/1471.jpg> : "KENYA UGANDA TANGANYIKA 1943 stampless  
Evacuees Mail censored wrapper from an Italian POW with two line".





<http://worldandmilitarynotes.com/web/wp-content/uploads/2016/02/Naivasha10.jpg>



<http://www.chrisrainey.com/images/6173.jpg>: "KENYA UGANDA TANGANYIKA 1943 censored lettersheet from an Italian POW at camp 352 addressed to Italy. With a fine printed "POSTAGE PAID Sh. 1/30" in red. Some light staining".



<http://www.chrisrainey.com/images/4034.jpg>

## 1941 Surcharges on South African Postage Stamps

M72-79



<https://assets.catawiki.nl/assets/2013/12/29/e/1/4/e149ec2c-70bb-11e3-956c-c26fc8ca12b5.jpg>

## After 1937 Uganda Revenue Stamps





<http://www.revrvd.com/uploads/3/2/2/0/3220955/5527620.jpg?581>: "1938-c1944 (see note 1). King George VI pictorial stamps inscribed Kenya Uganda Tanganyika, with two-line sans-serif Uganda Revenue overprint (Uganda 12 x 3 mm, Revenue 15 x 3 mm). Watermark Multiple Script CA. Various perfs. Overprint in black unless otherwise stated."







<http://www.revrevd.com/uploads/3/2/2/0/3220955/8976262.jpg?620>: "c1940-49 (see note 1).  
Similar to previous issue but overprinted Uganda Revenue in seriffed font (Uganda 13½ x 3½ mm,  
Revenue 14½ x 2½ mm). Various perfs."

## 1946 Victory

M80-81



<https://assets.catawiki.nl/assets/2013/12/29/8/e/6/8e672a7c-70cc-11e3-9691-c933c9b110fc.jpg>



<https://i.ebayimg.com/thumbs/images/g/lK8AAOSwrhBZGIInx/s-l225.jpg>

## 1948 25 Years Marriage King and Queen

M82-83



<https://assets.catawiki.nl/assets/2013/12/29/a/b/8/ab845d66-70cf-11e3-8276-6796cb3eddb9.jpg>

## 1949 75 Years World Postal Organisation

M84-87





<https://assets.catawiki.nl/assets/2013/4/4/b/7/c/b7c8f1ea-9d21-11e2-93eb-7c76a4e10c1c.jpg>

## 1950 Uganda Revenue



<http://www.revrevd.com/uploads/3/2/2/0/3220955/5097455.jpg?509>: "c1950-52. Similar to R151/160 but overprinted Uganda Revenue in smaller seriffed font (Uganda 11½ x 3 mm, Revenue 13 x 2½ mm). Overprinted in blue (£1) or black (others). Perf 14 (£1), perf 13¼ x 13¼ (2s), perf 13¼ x 13¼ (20c, 5s, 10s) or perf 13 x 12½ (others). Chalk-surfaced paper (£1).".

## 1950 Stamp Duty for Tanganyika



<http://www.revrvd.com/uploads/3/2/2/0/3220955/6396748.jpg?491>: "1950. Stamp Duty key type featuring palm trees and portrait of King George VI, using the head plate from the 1937-1950 Stamp Duty series of Hong Kong. 25½ x 30 mm. Perf 13. Watermark Multiple Script CA. Printed (typo) by De La Rue. Sheets of 60."

## 1952 Royal Visit

M88-89



<https://assets.catawiki.nl/assets/2013/12/29/2/1/c/21ceb58e-70d5-11e3-9d0c-9dc9ab78905a.jpg>

## 1953 Coronation Queen Elisabeth

M90



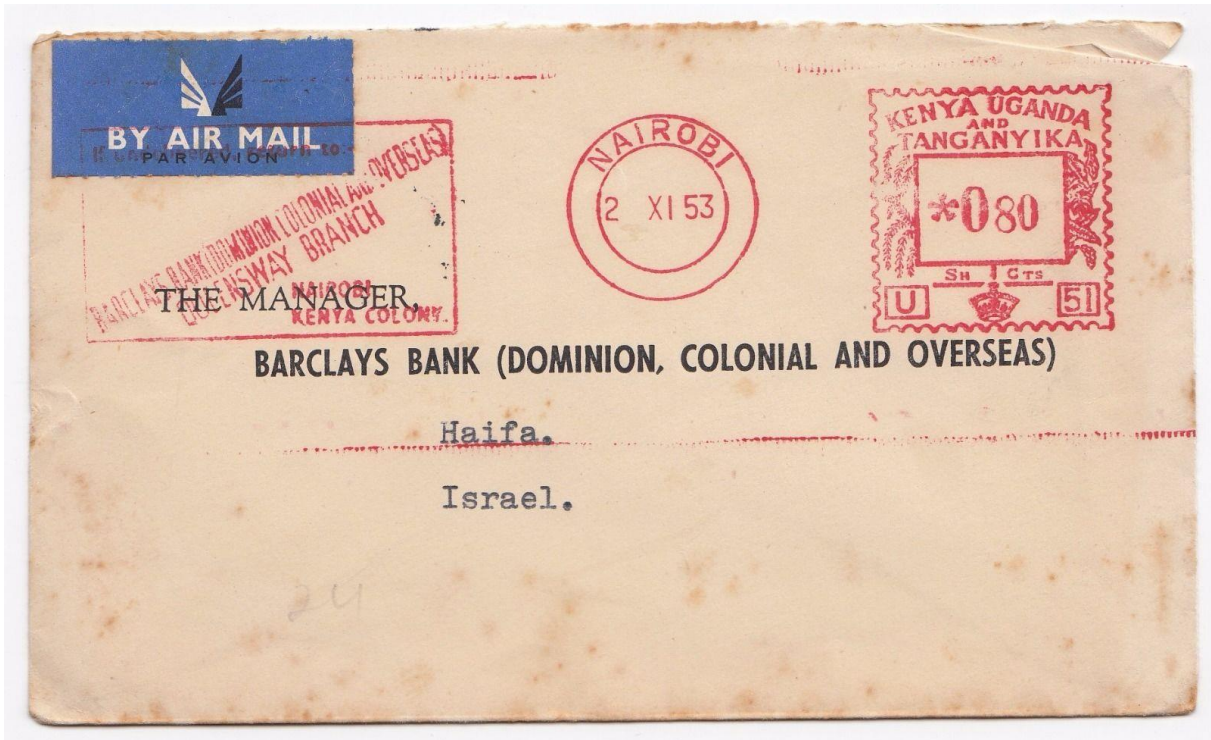


<https://assets.catawiki.nl/assets/4/8/6/d/86d60a50-4959-012d-0f89-0050569439b1.jpg>



[http://i.ebayimg.com/00/s/MTAyN1gxNjAw/z/k6UAAOSw4GVYLqZ4/\\$\\_57.JPG](http://i.ebayimg.com/00/s/MTAyN1gxNjAw/z/k6UAAOSw4GVYLqZ4/$_57.JPG)





<http://i.ebayimg.com/images/g/mBcAAOSwT-FZCQxY/s-l1600.jpg>

## 1954 Visit Queen Elisabeth

M91



<https://assets.catawiki.nl/assets/2013/12/31/5/b/e/5bed90ae-7220-11e3-984b-e26f871b7f8a.jpg>

## 1954-1959 Queen Elisabeth and local landscapes

M92-105



[http://img2.jpegbay.com/gallery/005182786/1\\_f.jpg](http://img2.jpegbay.com/gallery/005182786/1_f.jpg)



<http://thumbs.ebaystatic.com/images/g/c7kAAOSwcUByluo-/s-l225.jpg>



<http://i.ebayimg.com/images/g/000AAOSwHjNWx4/s-l300.jpg>





[http://www.kut-stamps.com/Postal\\_Stationery/QEII\\_30c\\_envelope.jpg](http://www.kut-stamps.com/Postal_Stationery/QEII_30c_envelope.jpg)

### 1954 Uganda Revenue



<http://www.revrvd.com/uploads/3/2/2/0/3220955/8784827.jpg?522>: "c1954-57. Queen Elizabeth II first pictorial issue, with two-line seriffed Uganda Revenue overprint (Uganda 12 x 3 mm, Revenue



14 x 2½ mm). Perf 12½ x 13 (10c to 1s), perf 13 x 12½ (2s to 10s), perf 13½ x 13 (£1). Watermark Multiple Script CA. Overprinted locally by unknown printer.”.

### 1954 Kenya Revenue



<http://www.revrevd.com/uploads/3/2/2/0/3220955/2886299.jpg?601>



<http://www.revrevd.com/uploads/3/2/2/0/3220955/529277.jpg?584>



<http://www.revrevd.com/uploads/3/2/2/0/3220955/6327214.jpg?128>

### 1954 Stamp Duty for Tanganyika





<http://www.revrevd.com/uploads/3/2/2/0/3220955/4834090.jpg?369>: “1954-59. Similar type but portrait changed to Queen Elizabeth II. Perf 13. Watermark Multiple Script CA.”.

### 1958 Stamp duty for Tanganyika



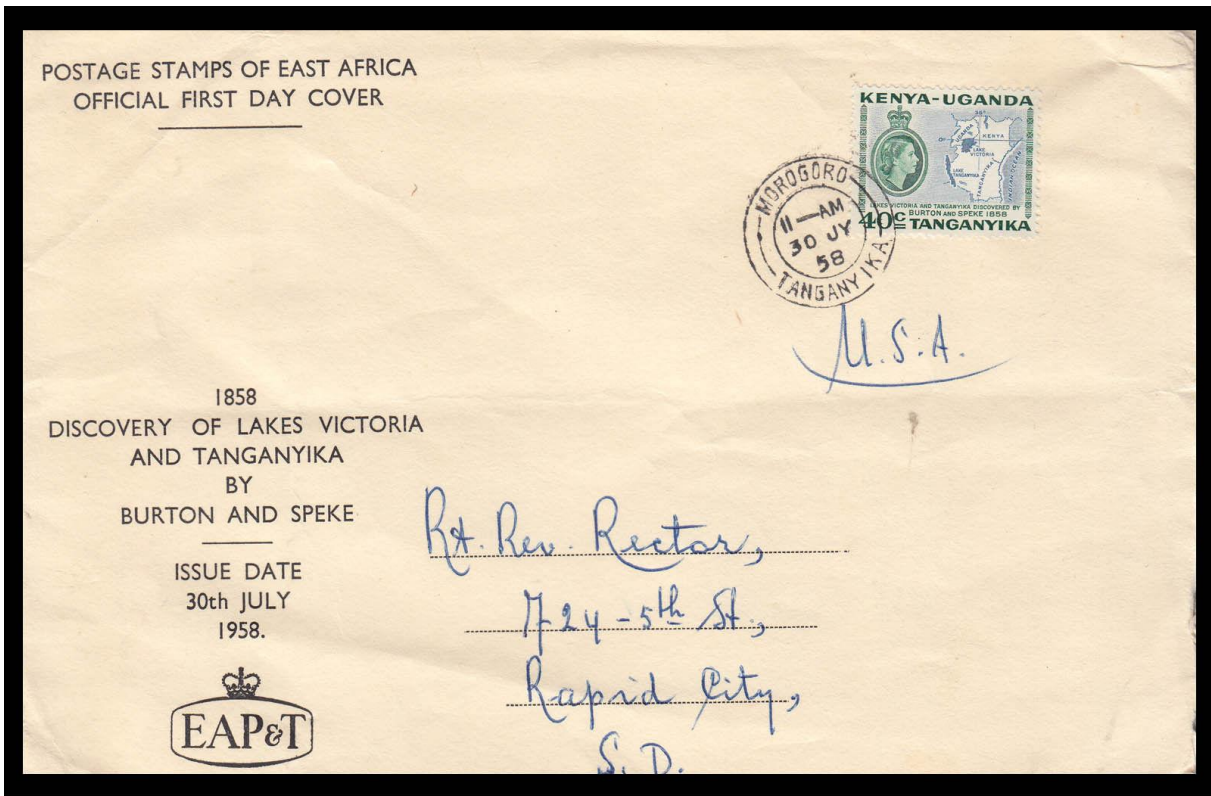
<http://www.revrevd.com/uploads/3/2/2/0/3220955/2254104.jpg?122> : “c1958 (according to Gibson). S14 surcharged ten cents in words, 4 x 24 mm.”.

### 1958 100 Years ‘discovery’ of Lakes Tanganyika and Victoria by Richard Burke and John Speke

M106-107



<https://assets.catawiki.nl/assets/2012/3/13/9/0/f/90facc40-4f91-012f-8db8-005056960006.jpg>



SCINDED AWK

(#100417)

<http://i.ebayimg.com/images/g/1qgAAOSww3tY6LSh/s-l1600.jpg>

1959 Service stamps: "Official" surcharge

M D1-12





<https://i.ebayimg.com/thumbs/images/g/HOGAAOSwHMJYPWpa/s-l225.jpg>



<https://i.ebayimg.com/thumbs/images/g/mF8AAOSwsXFZFyqw/s-l225.jpg>



<https://s-media-cache-ak0.pinimg.com/236x/03/67/af/0367af6a4a550c2fdf804e2452609eae.jpg>

<http://i.ebayimg.com/thumbs/images/g/sSQAAOxyFPNSKQd4/s-l225.jpg>

<https://i.ebayimg.com/thumbs/images/g/hjcAAOSwsW9Y1Puo/s-l225.jpg>



<https://i.ebayimg.com/thumbs/images/g/sfYAAOSwxu5ZLH9A/s-l225.jpg>

## 1959 Postal stationery



<https://encrypted-tbn0.gstatic.com/images?q=tbn:ANd9GcR4yocqfxMea8pPDCZ7X8kK6zwKrHTtKC8nKOvli1zyImVOH0J>

## 1960 Queen and images

M108-123



<https://assets.catawiki.nl/assets/2014/1/1/9/a/2/9a205214-72d7-11e3-8387-423fe546ebc1.jpg>





[http://www.grosvenorauctions.com/dyn\\_pages/stamp\\_images/44/10575.jpg](http://www.grosvenorauctions.com/dyn_pages/stamp_images/44/10575.jpg)

**1960 Service stamps: "Official" surcharge**

M D13-20



<http://i.ebayimg.com/images/g/s4AAAOSwnHZYcU-g/s-l1600.jpg>

## 1960 Uganda Revenue





<http://www.revrevd.com/uploads/3/2/2/0/3220955/7245019.jpg?620> : “c1960. Queen Elizabeth II second pictorial issue overprinted Uganda Revenue. Perf 15 x 14 (cents values) or perf 14½ (shillings values). Watermark Multiple Crown and Block CA.”.

### 1963 Campaign against Hunger

M124-127

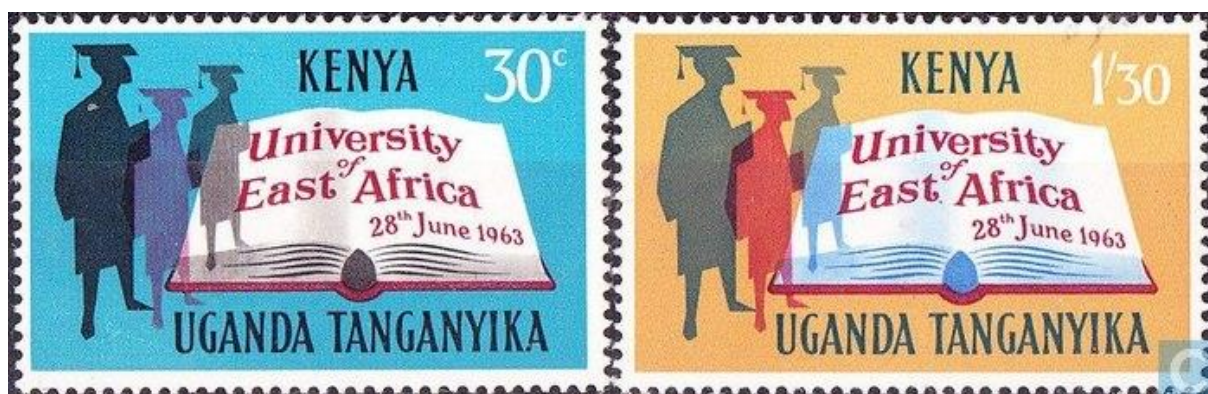


<https://assets.catawiki.nl/assets/2014/1/1/d/8/0/d80556f8-72da-11e3-9332-773c70f984e0.jpg>

### 1963 East African University



M128-129



<https://assets.catawiki.nl/assets/2014/1/1/b/e/9/be938732-72e2-11e3-8174-77adb2c4a49f.jpg>

### 1963 100 Year International Red Cross

M130-131



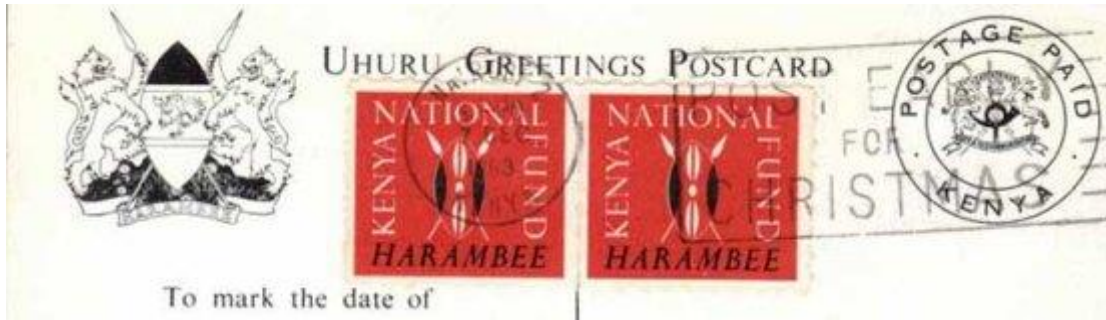
<https://assets.catawiki.nl/assets/2014/1/1/6/6/8/668f97fe-72e4-11e3-98fd-73d905e27a34.jpg>

Tanganyika also used its own postage stamps since Independence on 9/12/1961; Uganda since Independence on 28/7/1962, and Kenya since Independence on 12/12/1963. Afterwards also the East African Community continued to issue stamps that could be used in all three countries (and in Zanzibar, that joined Tanganyika in 1964); this lasted until 1976).

### Extra:

Just after independence Kenya issued stamps (not for postal duties) for the new Harambee Fund





[http://www.kut-stamps.com/Postal\\_History/Independence\\_PC\\_with\\_National\\_fund\\_Labels.jpg](http://www.kut-stamps.com/Postal_History/Independence_PC_with_National_fund_Labels.jpg)

## Inventory of Post Offices and postmarks in East Africa

[B = Burundi]; K = Kenya (and current counties); [R = Rwanda; S = Somalia; SS = South Sudan]; T = Tanzania; T-TPO = Tanzania Travelling Post Office; U = Uganda (and current regions).

| Post Office/<br>Postmark              | Area                         | APH  | Before<br>1900 | 1900-<br>1922 | 1922-<br>1945 | After 1945 |
|---------------------------------------|------------------------------|------|----------------|---------------|---------------|------------|
| Aboki                                 | U-Northern<br>(Lira)         | 18-2 |                |               |               | 1956>      |
| Aduki                                 | U-Northern<br>(Lira)         | 18-2 |                |               |               | 1956>      |
| Ahero                                 | K-Kisumu                     | 17-7 |                |               |               | 1950>      |
| Ainapkoi                              | K-Uasin Gishu                | 17-7 |                |               | 1928>         | v          |
| Ajumani                               | U-Northern<br>(Gulu)         | 18-2 |                |               |               | 1956>      |
| Akala                                 | K-Uasin Gishu                | 17-7 |                |               |               | 1950-56    |
| Alemere                               | U-Northern<br>(Lira)         | 18-2 |                |               |               | 1957>      |
| Alexandria                            | S-Jubaland                   | 17-5 |                | 1919>         | <1925         |            |
| Aloi                                  | U-Northern<br>(Lira)         | 18-2 |                |               |               | 1956>      |
| Amani                                 | T-Tanga                      | 19-2 |                | 1902 (G)>     | V (1934)      |            |
| Amuria                                | U-Eastern<br>(Soroti)        | 18-2 |                |               |               | 1960>      |
| Angal Pakwach                         | U-Northern                   | 18-2 |                |               |               | 1962>      |
| Ankole><br>Mbarara                    | U-Western<br>(Ankole Distr.) | 18-2 | 1899>          | <1913         |               |            |
| Anyeke                                | U-Northern<br>(Lira)         | 18-2 |                |               |               | 1962>      |
| Army Post<br>Office                   | T (British<br>Occupation)    | 19-3 |                | 1921          |               |            |
| Arua                                  | U-Northern                   | 18-2 |                |               | 1922>         | v          |
| Aruscha =<br>Arusha                   | T-Arusha                     | 19-1 |                | 1902 (G)>     | v             | v          |
| Asembo Bay                            | K-Siaya                      | 17-7 |                |               | 1935>         | <1957      |
| Athi River                            | K-Machakos                   | 17-5 |                | 1904>         |               |            |
| Atiak                                 | U-Northern<br>(Gulu)         | 18-2 |                |               |               | 1956>      |
| Atura                                 | U-Northern<br>(Gulu)         | 18-2 |                |               | 1925>         | v          |
| Awach                                 | U-Northern<br>(Gulu)         | 18-2 |                |               |               | 1961>      |
| Awere                                 | U-Northern<br>(Gulu)         | 18-2 |                |               |               | 1959>      |
| Babali                                | T-Manyara                    | 19-1 |                |               | (1935)        | (1948)     |
| Bagamoyo                              | T-Pwani                      | 19-2 | 1890 (G)>      | v             | (1934)        |            |
| Baker's Fort<br>[= Faliko;<br>Paliko] | U-Northern                   | 18-2 |                | 1907-08       |               |            |



African Postal Heritage; African Studies Centre Leiden; APH Paper 21; Ton Dietz  
Kenya, Uganda and Tanganyika 1935-1963; Version July 2017

|                        |                            |      |           |           |        |                |
|------------------------|----------------------------|------|-----------|-----------|--------|----------------|
| Bamunanika             | U-Central (Bombo)          | 18-2 |           |           |        | 1949 + 1956>   |
| Banana Hill            | K-Kiambu                   | 17-6 |           |           |        | 1956>          |
| Baringo                | K-Baringo                  | 17-7 |           | 1902-17   |        |                |
| Bbowa                  | U-Central (Bombo)          | 18-2 |           |           |        | 1961>          |
| Biharamulo             | T-Kagera                   | 19-1 |           |           | (1937) |                |
| Bismarckburg > Kasanga | T-Rukwa                    | 19-3 |           | 1901 (G)> | v      |                |
| Bohemia of Lloyd       | K-Mombasa                  | 17-5 |           | (1905)    |        |                |
| Bohra Road             | K-Nairobi                  | 17-6 |           |           |        | 1953>          |
| Bombo                  | U-Central                  | 18-2 |           |           | 1922>  | v              |
| Bomet                  | K-Bomet                    | 17-7 |           |           |        | 1954>          |
| Bonden                 | K-Bomet                    | 17-7 |           |           |        | 1961>          |
| Bondo                  | K-Siaya                    | 17-7 |           |           |        | (1963)         |
| Broderick Falls        | K-Bungoma                  | 17-7 |           |           | 1930>  | v              |
| Budaka                 | U-Eastern (Bugwere Distr.) | 18-2 |           |           |        | 1948>          |
| Buddu > Masaka         | U-Central                  | 18-2 | 1899>     | <1903     |        |                |
| Bugangadzi > Mubende   | U-Central                  | 18-2 |           | 1903-15   |        |                |
| Bugembe                | U-Eastern (Jinja)          | 18-2 |           |           |        | 1957>          |
| Bugiri                 | U-Eastern (Busoga)         | 18-2 |           |           |        | 1956>          |
| Bugondo                | U-Eastern                  | 18-2 |           | 1914>     | v      | v              |
| Buiko                  | T-Tanga                    | 19-2 |           | 1902 (G)> | v      |                |
| Bujuta                 | U-Eastern (Jinja)          | 18-2 |           |           |        | 1957>          |
| Bukakata               | U-Central                  | 18-2 |           |           | 1926>  |                |
| Bukedia                | U-Eastern (Bugwere Distr.) | 18-2 |           |           |        | 1948>          |
| Bukene                 | T-Tabora                   | 19-3 |           |           | (1936) |                |
| Bukoba                 | T-Kagera                   | 19-1 | 1895 (G)> | v         | v      | v              |
| Bukoto                 | U-Central (Masaka)         | 18-2 |           |           |        | 1957>          |
| Bukulula               | U-Central (Masaka)         | 18-2 |           |           |        | 1960>          |
| Bukwa                  | K-Trans Nzoia              | 17-7 |           |           |        | 1960-61        |
| Bulolo                 | U-Eastern (Bugwere Distr.) | 18-2 |           |           |        | 1962>          |
| Bulo Mpigi             | U-Central (Mpigi)          | 18-2 |           |           |        | 1959-60; 1961> |
| Bulopa                 | U-Eastern (Kamuli)         | 18-2 |           |           |        | 1956>          |
| Bululu                 | U-Eastern                  | 18-2 |           | 1910-12   |        |                |
| Bulungu                | U-Eastern (Jinja)          | 18-2 |           |           |        | 1962>          |
| Bundibugyo             | U-Western (Fort Portal)    | 18-2 |           |           |        | 1953>          |
| Bungoma                | K-Bungoma                  | 17-7 |           |           | 1928>  | v              |

African Postal Heritage; African Studies Centre Leiden; APH Paper 21; Ton Dietz  
Kenya, Uganda and Tanganyika 1935-1963; Version July 2017

|   |                            |      |  |         |         |                   |
|---|----------------------------|------|--|---------|---------|-------------------|
| Bunyore                                 | K-Kisumu, see Maseno       | 17-7 |  |         |         | 1962>             |
| Bura                                    | K-Taita Taveta             | 17-5 |  |         |         | 1947>             |
| Busambalia                              | U-Central (Nsinze)         | 18-2 |  |         | 1937>   | v                 |
| Busesa                                  | U-Eastern (Busoga)         | 18-2 |  |         |         | 1958>             |
| Bushenyi                                | U-Western (Ankole)         | 18-2 |  |         |         | 1953-55           |
| Busia                                   | U-Eastern (Tororo)         | 18-2 |  |         | 1936>   | v                 |
| Busolwe                                 | U-Eastern (Tororo)         | 18-2 |  |         |         | 1952>             |
| Busunju                                 | U-Central (Kampala)        | 18-2 |  |         |         | 1953-59;<br>1961> |
| Butere                                  | K-Kakamega                 | 17-7 |  |         | 1933>   | v                 |
| Butiaba                                 | U-Western (Masindi)        | 18-2 |  | 1911>   | v       | v                 |
| Butiru                                  | U-Eastern (Bugwere Distr.) | 18-2 |  | 1908-10 |         | 1955>             |
| Butit                                   | U-Western (Fort Portal)    | 18-2 |  |         |         | 1956>             |
| Buwere                                  | U-Eastern (Bugwere Distr.) | 18-2 |  |         |         | 1954>             |
| Chake Chake (was Pemba; was Chakichaki) | T-Pemba                    | 20-6 |  |         | 1932>   | v                 |
| Chakichaki (was: Pemba) > Chake Chake   | T-Pemba                    | 20-6 |  | 1909>   | <1931   |                   |
| Changamwe                               | K-Mombasa                  | 17-5 |  |         |         | 1963              |
| Chania Bridge > Thika                   | K-Kiambu                   | 17-7 |  | 1911>   | <1926   |                   |
| Chemilil                                | K-Kisumu                   | 17-7 |  |         | 1928>   | v                 |
| Chepkorio                               | K-Elgeyo Marakwet          | 17-7 |  |         |         | (1972)            |
| Cherangani                              | K-Trans Nzoia              | 17-7 |  |         | 1925-40 |                   |
| Chogoria                                | K-Tharaka-Nithi            | 17-5 |  |         |         | 1949>             |
| Chuka                                   | K-Tharaka-Nithi            | 17-5 |  | 1917-22 |         | 1950-54           |
| Chunya                                  | T-Mbeya                    | 19-3 |  |         | (1938)  |                   |
| Chwaka                                  | T-Zanzibar                 | 20-6 |  | 1909>   | V?      | V?                |
| Chwele                                  | K-Bungoma                  | 17-7 |  |         |         | (1969)            |
| Cooper Road                             | U-Central (Kampala)        | 18-2 |  |         |         | 1960>             |
| Dagoreti Corner                         | K-Nairobi                  | 17-6 |  |         |         | 1952-53           |
| Dagoreti Market                         | K-Nairobi                  | 17-6 |  |         |         | 1956>             |



African Postal Heritage; African Studies Centre Leiden; APH Paper 21; Ton Dietz  
Kenya, Uganda and Tanganyika 1935-1963; Version July 2017

|                                       |                            |               |           |                            |         |                   |
|---------------------------------------|----------------------------|---------------|-----------|----------------------------|---------|-------------------|
| Dar es Salaam                         | T-DES                      | 19-2          | 1890 (G)> | v                          | v       | v                 |
| Dar es Salaam-<br>Mwanza              | T-TPO                      | 19-3          |           |                            | (1934)  | (1946)            |
| Dar es Salaam-<br>Tabora              | T-TPO                      | 19-3          |           |                            |         | (1957)            |
| Dar(a)jani                            | K-Makueni                  | 17-5          |           |                            | 1925-31 |                   |
| Deutsche<br>Marineschiffe             | T-DES                      | 19-2          |           | (1909)                     |         |                   |
| Deutsche<br>Seepost<br>Bombaylinie    | T-DES                      | 19-2          |           | (1905)                     |         |                   |
| Deutsche<br>Seepost<br>Ostafrikalinie | T-DES                      | 19-2          |           | (1904 -13)                 |         |                   |
| Dodoma                                | T-Dodoma                   | 19-3          |           | 1902 (G)>                  | (1937)  | (1955, 1961)      |
| Dokolo                                | U-Eastern<br>(Kabaramaido) | 18-2          |           |                            |         | 1956-61;<br>1962> |
| Duke Street                           | K-Nairobi                  | 17-6          |           |                            | 1942>   | v                 |
| Eastleigh                             | K-Nairobi                  | 17-6          |           |                            |         | 1956>             |
| Eburru                                | K-Nakuru                   | 17-7          |           | 1904-07                    | 1925>   | <1951             |
| Elburgon                              | K-Nakuru                   | 17-7          |           | 1904>                      | v       | <1961             |
| Eldama Ravine                         | <1902: U;<br>K-Baringo     | 18-2;<br>17-7 | 1899>     | v                          | v       | v                 |
| Eldoma Ravine                         | = Eldama<br>Ravine         |               |           |                            |         |                   |
| Eldoret                               | K-Uasin Gishu              | 17-7          |           | 1910>                      | v       | v                 |
| Elmenteita                            | K-Nakuru                   | 17-7          |           | 1904>                      | v       | v                 |
| Emali                                 | K-Makueni                  | 17-5          |           |                            | 1926>   | v                 |
| Embakasi                              | K-Nairobi                  | 17-6          |           |                            |         | 1958>             |
| Embu                                  | K-Embu                     | 17-5          |           | 1912>                      | v       | v                 |
| Endebess                              | K-Trans Nzoia              | 17-7          |           | 1912>                      | v       | v                 |
| Entebbe                               | U-Central                  | 18-2          | 1899>     | v                          | v       | v                 |
| Entebbe<br>Airport =<br>Nsinze        | U-Central<br>(Entebbe)     | 18-2          |           |                            |         | [1951;<br>1953>]  |
| Enterprise<br>Road                    | K-Nairobi                  | 17-6          |           |                            |         | 1960>             |
| Equator                               | K-Baringo                  | 17-7          |           |                            | 1927>   | v                 |
| Escarpment                            | K-Kiambu                   | 17-6          |           | 1900-04;<br>1906;<br>1908> | v       | <1947             |
| Estate Road                           | U-Central<br>(Kampala)     | 18-2          |           |                            |         | 1959>             |
| Experimental<br>P.O.                  | K+U                        | 18-2;<br>17-5 |           | 1900-03                    |         |                   |
| Faliko [=<br>Paliko;<br>Baker's Fort] | U-Northern                 | 18-2          |           | 1907-08                    |         |                   |
| Farm 40<br>>Taraka                    | K-Uasin Gishu              | 17-7          |           | 1913-22                    |         |                   |

African Postal Heritage; African Studies Centre Leiden; APH Paper 21; Ton Dietz  
Kenya, Uganda and Tanganyika 1935-1963; Version July 2017

|                                    |                               |      |       |                 |        |            |
|------------------------------------|-------------------------------|------|-------|-----------------|--------|------------|
| Farm 45                            | K-Uasin Gishu                 | 17-7 |       | 1911            |        |            |
| Fawera                             | U-Central                     | 18-2 | 1896? |                 |        |            |
| Faza                               | K-Lamu                        | 17-5 |       |                 |        | 1954>      |
| Fort Hall ><br>Muranga             | K-Muranga                     | 17-6 |       | 1906>           | v      | v          |
| Fort Portal<br>(was: Toro)         | U-Western                     | 18-2 |       | 1901>           | v      | v          |
| Fort Ternan                        | K-Kisumu                      | 17-7 |       | 1901,<br>1904>  | v      | v          |
| Gakindu                            | K-Nyeri                       | 17-6 |       |                 |        | 1950-53    |
| Galole-Malindi                     |                               |      |       |                 |        | 1960>      |
| Garissa                            | K-Garissa                     | 17-5 |       |                 |        | 1945>      |
| Gatitu Market                      | K-Nyeri                       | 17-6 |       |                 |        | 1955>      |
| Gatundu                            | K-Kiambu                      | 17-6 |       |                 |        | 1963       |
| Gazi                               | K-Kwale                       | 17-5 |       | 1904>           | v      | v          |
| Geita                              | T-Geita                       | 19-1 |       |                 | (1935) | (1953; 59) |
| Ghalib Road                        | K-Nairobi                     | 17-6 |       |                 |        | 1956>      |
| Giakanja                           | K-Nyeri                       | 17-6 |       |                 |        | 1955-61    |
| Gidhunguri                         | K-Kiambu                      | 17-6 |       |                 |        | 1950>      |
| Gilgil                             | K-Nakuru                      | 17-7 |       | 1904>           | v      | v          |
| Gilgil Station                     | K-Nakuru                      | 17-7 |       | 1922            |        |            |
| Giriama                            | K-Kilifi                      | 17-5 |       | 1917-22         |        |            |
| Gisenyi                            | See Kissenji                  | 19-1 |       |                 |        |            |
| Githunguri                         | See Gidhunguri                |      |       |                 |        |            |
| Gobwen                             | S-Jubaland                    | 17-5 |       | 1913-22         |        |            |
| Golbanti                           | K-Kilifi                      | 17-5 |       | 1907-09         |        |            |
| Gondokoro                          | U-Northern; SS<br>after 1914  | 18-2 |       | 1901-13         |        |            |
| Government<br>Road                 | K-Nairobi                     | 17-6 |       | 1920-21         |        |            |
| Gulu                               | U-Northern                    | 18-2 |       | 1911>           | v      | v          |
| Gurdwara<br>Road                   | K-Nairobi                     | 17-6 |       |                 |        | (1977)     |
| Handeni                            | T-Tanga                       | 19-2 |       | 1902 (G)>       | v      |            |
| Hardinge<br>Street                 | K-Nairobi                     | 17-6 |       |                 |        | (1955)     |
| Hoey's Bridge<br>><br>Moi's Bridge | K-Uasin Gishu                 | 17-7 |       | 1920>           | v      | v          |
| Hoima                              | U-Western<br>(Bunyoro Distr.) | 18-2 |       | 1903>           | v      | v          |
| Homa Bay                           | K-Homa Bay                    | 17-7 |       | 1910-12         |        | 1955>      |
| Ibanda                             | U-Western<br>(Ankole)         | 18-2 |       |                 |        | 1957>      |
| Ibuje                              | U-Northern<br>(Lira)          | 18-2 |       |                 |        | 1962>      |
| Iganga                             | U-Eastern<br>(Busoga Distr.)  | 18-2 | 1897> | <1901;<br>1909> | v      | v          |
| Ihururu Market                     |                               |      |       |                 |        | 1955>      |



African Postal Heritage; African Studies Centre Leiden; APH Paper 21; Ton Dietz  
Kenya, Uganda and Tanganyika 1935-1963; Version July 2017

|               |                              |      |           |         |                 |                                 |
|---------------|------------------------------|------|-----------|---------|-----------------|---------------------------------|
| Iringa        | T-Iringa                     | 19-3 | 1898 (G)> | v       | (1924,<br>1937) |                                 |
| Ishaka        | U-Western<br>(Ankole)        | 18-2 |           |         |                 | 1957>                           |
| Isiolo        | K-Isiolo                     | 17-5 |           |         | 1929>           | v                               |
| Itendero      | U-Western<br>(Ankole)        | 18-2 |           |         |                 | 1958>                           |
| Itigi         | T-Singida                    | 19-3 |           |         |                 | (1963)                          |
| Jambangome    | T-Zanzibar                   | 20-6 |           |         | 1925-26         |                                 |
| Jinja         | U-Eastern                    | 18-2 |           | 1901>   | v               | v                               |
| Juja          | K-Kiambu                     | 17-6 |           | 1909-14 |                 |                                 |
| Kabale        | U-Western<br>(Kigezi Distr.) | 18-2 |           | 1917>   | v               | v                               |
| Kabarnet      | K-Baringo                    | 17-7 |           | 1917-19 | 1926>           | v                               |
| Kaberaido     | U-Eastern                    | 18-2 |           |         | 1926>           |                                 |
| Kabete        | K-Nairobi                    | 17-6 |           | 1921>   | v               | v                               |
| Kacheliba     | K-West Pokot                 | 17-7 |           | 1917>   | <1930           |                                 |
| Kahawa        | K-Nairobi                    | 17-6 |           | 1922>   | v               | v                               |
| Kahuti        | K-Muranga                    | 17-6 |           |         |                 | 1949-54                         |
| Kaimosi       | K-Nandi                      | 17-7 |           |         | 1924-41         | 1948>                           |
| Kaimosi       | K-Vihiga                     | 17-7 |           |         | (1939)          |                                 |
| Kajansi       | U-Central<br>(Kampala)       | 18-2 |           |         |                 | 1957>                           |
| Kajiado       | K-Kajiado                    | 17-7 |           | 1919>   | v               | v                               |
| Kakamega      | K-Kakamega                   | 17-7 |           | 1922>   | v               | v                               |
| Kakindu       | U-Central                    | 18-2 |           | 1908-13 |                 |                                 |
| Kakira        | U-Eastern (Jinja)            | 18-2 |           |         |                 | (1954; 1962)                    |
| Kakiri        | U-Central<br>(Kampala)       | 18-2 |           |         |                 | 1948>                           |
| Kakumiro      | U-Western                    | 18-2 |           | 1907-12 |                 | 1949>                           |
| Kalaki        | U-Eastern<br>(Kabaramaido)   | 18-2 |           |         |                 | 1958>                           |
| Kalangala     | U-Central<br>(Kampala)       | 18-2 |           |         |                 | 1961>                           |
| Kaliro        | U-Eastern                    | 18-2 |           |         | 1928>           | v                               |
| Kalisizo      | U-Central                    | 18-2 |           |         |                 | 1948>                           |
| Kaloleni      | K-Mombasa                    | 17-5 |           |         | 1942>           | 1945-51;<br>1955-58;<br>1962-63 |
| Kaluguza      | U-Western                    | 18-2 |           |         |                 | 1949>                           |
| Kalungu       | U-Central<br>(Masaka)        | 18-2 |           |         |                 | 1949>                           |
| Kamagambo     | K-Kisii                      | 17-7 |           |         |                 | 1952-60                         |
|               |                              |      |           |         |                 |                                 |
| Kamiti        | K-Kiambu                     | 17-6 |           | 1904-05 |                 |                                 |
| Kammenge      | U-Central                    | 18-2 |           |         |                 | 1954; 1962>                     |
| Kampala       | U-Central                    | 18-2 | 1896>     | v       | v               | v                               |
| Kampi Ya Moto | K-Nakuru                     | 17-7 |           |         | 1926>           | v                               |
| Kamuli        | U-Eastern                    | 18-2 |           | 1913-15 | 1926>           | v                               |

African Postal Heritage; African Studies Centre Leiden; APH Paper 21; Ton Dietz  
Kenya, Uganda and Tanganyika 1935-1963; Version July 2017

|                             |                            |      |  |         |         |                |
|-----------------------------|----------------------------|------|--|---------|---------|----------------|
| Kamwenge                    | U-Western (Fort Portal)    | 18-2 |  |         |         | 1954-55        |
| Kandara                     | K-Kiambu                   | 17-6 |  |         |         | 1950-57        |
| Kangema                     | K-Muranga                  | 17-6 |  |         |         | 1954>          |
| Kangundo                    | K-Machakos                 | 17-5 |  |         |         | 1950>          |
| Kanjulumira                 | U-Eastern (Jinja)          | 18-2 |  |         |         | 1958>          |
| Kanoni                      | U-Eastern (Jinja)          | 18-2 |  |         |         | 1949>          |
| Kapchorwa                   | U-Eastern (Bugwere Distr.) | 18-2 |  |         |         | 1962>          |
| Kapeeka-bondo               | U-Eastern (Jinja)          | 18-2 |  |         |         | 1956>          |
| Kapenguria                  | K-West Pokot               | 17-7 |  |         | 1930>   | v              |
| Kapsabet                    | K-Nandi                    | 17-7 |  | 1922>   | v       | v              |
| Kaptagat                    | K-Uasin Gishu              | 17-7 |  |         |         | 1953>          |
| Karatina                    | K-Nyeri                    | 17-6 |  |         |         | (1954-55)      |
| Karen                       | K-Nairobi                  | 17-6 |  |         |         | 1956>          |
| Kariobangi                  | K-Nairobi                  | 17-6 |  |         |         | (>1963)        |
| Karuhinda                   | U-Western (Kabale)         | 18-2 |  |         |         | 1956>          |
| Karungu                     | K-Migori                   | 17-7 |  | 1907-10 |         | 1951-53        |
| Kasanda Mityana             | U-Western (Kabale)         | 18-2 |  |         |         | 1955>          |
| Kasanga (was: Bismarckburg) | T-Rukwa                    | 19-3 |  | ?       |         |                |
| Kasangali                   | U-Central (Kampala)        | 18-2 |  |         |         | 1948>          |
| Kasawo                      | U-Central (Kampala)        | 18-2 |  |         |         | 1953>          |
| Kasenyi                     | U-Western                  | 18-2 |  |         |         | 1956>          |
| Kasese                      | U-Western                  | 18-2 |  |         |         | 1958>          |
| Katakwi                     | U-Eastern                  | 18-2 |  |         |         | 1954-61        |
| Katera                      | U-Central (Kampala)        | 18-2 |  |         |         | 1957; 1960>    |
| Katulani                    | K-Machakos                 | 17-5 |  |         |         | 1955>          |
| Katwe                       | U-Central (Kampala)        | 18-2 |  |         |         | 1949; 1952>    |
| Kawempe                     | U-Central (Kampala)        | 18-2 |  |         |         | 1952-60; 1961> |
| Kayanga                     | U-Central (Kampala)        | 18-2 |  |         |         | 1956>          |
| Kedowa                      | K-Kericho                  | 17-7 |  | 1922>   | v       | v              |
| Kelle                       | U-Eastern (Kabaramaido)    | 18-2 |  |         | 1925-34 |                |
| Kenani                      | K-Nyamira                  | 17-7 |  | 1904>   | <1935   |                |
| Kendu Bay                   | K-Homa Bay                 | 17-7 |  |         |         | 1949>          |
| Kengeja                     | T-Pemba                    | 20-6 |  |         |         | (1957)         |
| Kericho                     | K-Kericho                  | 17-7 |  | 1904>   | v       | v              |
| Keroka                      | K-Kisii                    | 17-7 |  |         |         | 1963           |
| Kerugoya                    | K-Kirinyaga                | 17-6 |  |         | 1942>   | v              |
| Khwisero                    | K-Siaya                    | 17-7 |  |         |         | 1956>          |



African Postal Heritage; African Studies Centre Leiden; APH Paper 21; Ton Dietz  
Kenya, Uganda and Tanganyika 1935-1963; Version July 2017

|                              |                            |      |           |                            |                 |                 |
|------------------------------|----------------------------|------|-----------|----------------------------|-----------------|-----------------|
| Yala                         |                            |      |           |                            |                 |                 |
| Kiabakari<br>Musoma          | T-Mara                     | 19-1 |           |                            |                 | (1963)          |
| Kiambu (also<br>see Kyambu)  | K-Kiambu                   | 17-6 |           | 1920>                      | v               | v               |
| Kianyaga                     | K-Embu                     | 17-5 |           |                            |                 | 1955-63         |
| Kibero                       | U-Western<br>(Lake Albert) | 18-2 |           | 1903                       |                 |                 |
| Kibibi                       | U-Central<br>(Mpigi)       | 18-2 |           |                            |                 | 1953>           |
| Kibigori                     | K-Kisumu                   | 17-7 |           | 1904>                      | v               | v               |
| Kibiitu                      | U-Western (Fort<br>Portal) | 18-2 |           |                            |                 | 1960>           |
| Kiboga                       | U-Central<br>(Kampala)     | 18-2 |           |                            |                 | 1949>           |
| Kibondo                      | T-Kigoma                   | 19-3 |           |                            | (1944)          |                 |
| Kibos                        | K-Kisumu                   | 17-7 |           | 1904>                      | v               | v               |
| Kibuye                       | U-Central<br>(Kampala)     | 18-2 |           |                            |                 | 1957>           |
| Kibwezi                      | K-Makueni                  | 17-5 |           | 1900;<br>1904>             | v               | v               |
| Kidera                       | U-Eastern<br>(Kamuli)      | 18-2 |           |                            |                 | 1955>           |
| Kiganjo                      | K-Kiambu<br>or K-Nyeri?    | 17-6 |           |                            |                 | 1954>           |
| Kigoma                       | T-Kigoma                   | 19-3 |           | 1902 (G)>                  | V (1923,<br>39) | (1947, 75)      |
| Kigoma-DES<br>TPO            | T-TPO                      | 19-3 |           |                            | (1934)          |                 |
| Kijabe                       | K-Kiambu                   | 17-6 |           | 1903>                      | v               | v               |
| Kikagati                     | U-Western                  | 18-2 |           |                            | 1938>           | <1946;<br>1953> |
| Kikambala                    | K-Kilifi                   | 17-5 |           |                            |                 | 1953>           |
| Kikima                       | K-Machakos                 | 17-5 |           |                            |                 | 1955>           |
| Kikurgu ><br>Kikuyu          | K-Kiambu                   | 17-6 | 1897>     | <1902                      |                 |                 |
| Kikuyu (also<br>See Kikurgu) | K-Kiambu                   | 17-6 |           | 1904>                      | v               | v               |
| Kikwajuni                    | T-Zanzibar                 | 20-6 |           |                            | 1931-36         |                 |
| Kilembe                      | U-Western                  | 18-2 |           |                            |                 | 1952>           |
| Kilifi                       | K-Kilifi                   | 17-5 |           | 1922>                      | v               | v               |
| Kilimatinde                  | T-Singida                  | 19-3 | 1895 (G)> | v                          |                 |                 |
| Kilindini                    | K-Mombasa                  | 17-5 | 1897>     | 1900-04;<br>1908;<br>1914> | v               | <1957           |
| Kilindini Road               | K-Mombasa                  | 17-5 |           |                            |                 | 1959>           |
| Kilome                       | K-Machakos                 | 17-5 |           |                            |                 | 1957>           |
| Kilosa = Kilossa             | T-Morogoro                 | 19-3 | 1895 (G)> | v                          |                 |                 |
| Kilwa                        | T-Lindi                    | 19-2 | 1892 (G)> | v                          |                 |                 |
| Kilwa-Masoko                 | T-Lindi                    | 19-2 |           |                            |                 | (1958)          |

African Postal Heritage; African Studies Centre Leiden; APH Paper 21; Ton Dietz  
Kenya, Uganda and Tanganyika 1935-1963; Version July 2017

|                                 |                             |               |           |                   |         |           |
|---------------------------------|-----------------------------|---------------|-----------|-------------------|---------|-----------|
| Kima                            | K-Makueni                   | 17-5          |           | 1922>             | v       | v         |
| Kimilili                        | K-Bungoma                   | 17-7          |           |                   |         | 1951>     |
| Kiminini                        | K-Trans Nzoia               | 17-7          |           |                   | (1932)  |           |
| Kiminini                        | K-Bungoma                   | 17-7          |           |                   | 1927-32 | 1953>     |
| Kinango                         | K-Mombasa                   | 17-5          |           |                   |         | 1958>     |
| Kinangop ><br>South<br>Kinangop | K-Nyandarua                 | 17-6          |           |                   | 1935>   | <1949     |
| Kinani = Kinoni                 | U-Central                   | 18-2          |           | 1909-12           |         |           |
| Kindani =<br>Mikandani          | T-Mtwara                    | 19-2          | 1894 (G)> | v                 |         |           |
| Kinoni = Kinani                 | U-Central                   | 18-2          |           | [1909-12]         |         |           |
| Kipembe                         | T-Iringa                    | 19-3          |           |                   | (1930s) |           |
| Kipini                          | K-Tana River                | 17-5          |           | 1907>             | 1923<   | 1960      |
| Kipkabus                        | K-Uasin Gishu               | 17-7          |           |                   |         | (1953)    |
| Kipkelion                       | See Lumbwa                  |               |           |                   |         |           |
| Kisaki                          | T-Morogoro                  | 19-3          |           | 1902 (G)>         |         |           |
| Kisii                           | K-Kisii                     | 17-7          |           | (1914)            | (1926)  | (1957)    |
| Kismayu                         | S-Jubaland                  | 17-5          | 1896>     | v                 | <1925   |           |
| Kisoroa                         | U-Western<br>(Kabale)       | 18-2          |           |                   |         | 1956>     |
| Kissenji =<br>Gisenyi           | R                           | 19-1          |           | 1902 (G)>         | v       |           |
| Kisubi                          | U-Central<br>(Entebbe)      | 18-2          |           |                   |         | 1956>     |
| Kisumu (was<br>Port Ugowe)      | <1902: U;<br>K-Kisumu       | 18-2;<br>17-7 |           | 1901>             | v       | v         |
| Kitale                          | K-Trans Nzoia               | 17-7          |           | 1921>             | v       | v         |
| Kitgum                          | U-Northern<br>(Chua Distr.) | 18-2          |           | 1917>             | v       | v         |
| Kitui                           | K-Kitui                     | 17-5          |           | 1907>             | v       | v         |
|                                 |                             |               |           |                   |         |           |
| Kiu                             | K-Makueni                   | 17-5          |           | 1900-02;<br>1904> | v       | v         |
| Kiunga                          | K-Lamu                      | 17-5          |           |                   |         | 1960>     |
| Kizimkai                        | T-Zanzibar                  | 20-6          |           |                   | 1926    |           |
| Koani                           | T-Zanzibar                  | 20-6          |           |                   |         | 1949>     |
| Koba                            | U-Central<br>(Kampala)      | 18-2          |           | 1908-10           |         |           |
| Koja Camp Red<br>Cross          | U-Central<br>(Kampala)      | 18-2          |           |                   | 1943>   | <1950     |
| Kola                            | K-Machakos                  | 17-5          |           |                   |         | 1957>     |
| Konde                           | T-Pemba                     | 20-6          |           |                   |         | 1956>     |
| Kondoa-Irangi                   | T-Dodoma                    | 19-3          |           | 1902 (G)>         | v       |           |
| Kongole                         | U-Eastern<br>(Soroti)       | 18-2          |           |                   |         | 1956>     |
| Kongwa                          | T-Dodoma                    | 19-3          |           |                   |         | (1950)    |
| Konza                           | K-Kajiado                   | 17-7          |           |                   | 1929>   | v         |
| Korogwe                         | T-Tanga                     | 19-2          |           | 1902 (G)>         | v       | (1953-54) |
| Koru                            | K-Kisumu                    | 17-7          |           | 1914-15           | v       | v         |



African Postal Heritage; African Studies Centre Leiden; APH Paper 21; Ton Dietz  
Kenya, Uganda and Tanganyika 1935-1963; Version July 2017

|                          |                               |      |                                |                 |              |         |
|--------------------------|-------------------------------|------|--------------------------------|-----------------|--------------|---------|
|                          |                               |      |                                | 1917>           |              |         |
| Kumi                     | U-Eastern<br>(Bugwere Distr.) | 18-2 |                                | 1910-17         | 1930>        | v       |
| Kutus                    | K-Kirinyaga                   | 17-6 |                                |                 |              | 1956>   |
| Kwale                    | K-Kwale                       | 17-5 |                                |                 | 1930>        | v       |
| Kyambu ><br>Kiambu       | K-Kiambu                      | 17-6 |                                | 1908-18         |              |         |
| Kyegegwa                 | U-Central<br>(Kampala)        | 18-2 |                                |                 |              | 1955-62 |
| Kyenjojo                 | U-Western (Fort<br>Portal)    | 18-2 |                                |                 |              | 1953>   |
| Kyere Ngora              | U-Eastern                     | 18-2 |                                |                 |              | 1960>   |
| Kyotera                  | U-Central<br>(Masaka)         | 18-2 |                                |                 |              | 1949>   |
| Lacekocot                | U-Northern<br>(Gulu)          | 18-2 |                                |                 |              | 1957>   |
| Lake Katwe               | U-Western                     | 18-2 |                                |                 |              | 1960>   |
| Lake Magadi ><br>Magadi  | K-Kajiado                     | 17-7 |                                |                 | 1923-29      |         |
| Lamu                     | K-Lamu                        | 17-5 | 1888?/<br>1890-91 (G)<br>1890> | v               | v            | v       |
| Lamuria                  | K-Nyeri                       | 17-6 |                                |                 | 1926>        | <1947   |
| Langata                  | K-Nairobi                     | 17-6 |                                |                 |              | 1957>   |
| Langenburg ><br>Lumbila  | T-Njombe                      | 19-3 | 1895 (G)>                      | v               |              |         |
| Lavington                | K-Nairobi                     | 17-6 |                                |                 |              | 1961>   |
| Leganga                  | T-Arusha                      | 19-1 |                                | V?              | V?           | V?      |
| Leseru                   | K-Uasin Gishu                 | 17-7 |                                |                 | 1926>        | v       |
| Lesirko ><br>Oljoro Orok | K-Nyandarua                   | 17-6 |                                |                 | 1929-30      |         |
| Leudorf ><br>Leganga     | T-Arusha                      | 19-1 |                                | 1902 (G)>       | <1918<br>(G) |         |
| Likoni                   | K-Mombasa                     | 17-5 |                                |                 |              | 1947>   |
| Limuru                   | K-Kiambu                      | 17-6 |                                | 1904>           | v            | v       |
| Lindi                    | T-Lindi                       | 19-2 | 1891 (G)>                      | V (1918-<br>21) | (v)          | (1952)  |
| Lira                     | U-Northern<br>(Lango Distr.)  | 18-2 |                                |                 | 1922>        | v       |
| Litein                   | K-Kericho                     | 17-7 |                                |                 | 1925-26      | 1948>   |
| Liuli Port               | T-Ruvuma                      | 19-3 |                                |                 |              | (1956)  |
| Lodonga                  | U-Northern<br>(Arua)          | 18-2 |                                |                 |              | 1954>   |
| Lodwar                   | K-Turkana                     | 17-7 |                                |                 | 1943>        | v       |
| Loitokitok               | K-Kajiado                     | 17-7 |                                |                 |              | 1960>   |
| Lokitaung                | K-Turkana                     | 17-7 |                                |                 | 1943>        | v       |
| Lolgorien                | K-Narok                       | 17-7 |                                |                 | 1933-43      |         |
| Londiani                 | K-Kericho                     | 17-7 |                                | 1904>           |              |         |
| Longonot                 | K-Nakuru                      | 17-7 |                                | 1919>           | v            | v       |
| Lower Kabete             | K-Nairobi                     | 17-6 |                                |                 |              | 1947>   |

African Postal Heritage; African Studies Centre Leiden; APH Paper 21; Ton Dietz  
Kenya, Uganda and Tanganyika 1935-1963; Version July 2017

|                                  |                        |      |          |                   |               |                    |
|----------------------------------|------------------------|------|----------|-------------------|---------------|--------------------|
| Luanda                           | K-Vihiga               | 17-7 |          |                   | 1931>         | <1947              |
| Lubanyi                          | U-Eastern (Jinja)      | 18-2 |          |                   |               | 1952>              |
| Luba's (Place)                   | U-Central              | 18-2 | 1896>    | <1900             |               |                    |
| Lugari                           | K-Kakamega             | 17-7 |          |                   | 1926>         | v                  |
| Lugari Station                   | K-Bungoma              | 17-7 |          |                   | (1935)        | (1954)             |
| Lugazi                           | U-Central              | 18-2 |          |                   | 1926>         |                    |
| Lugogo                           | U-Central<br>(Kampala) | 18-2 |          |                   |               | 1956>              |
| Lumbila (was:<br>Langenburg)     | T-Njombe               | 19-3 |          | ?                 |               |                    |
| Lumbwa ><br>Kipkelion            | K-Kericho              | 17-7 |          | 1904>             | v             | v                  |
| Lushoto (was:<br>Wilhelmst(h)al) | T-Tanga                | 19-2 |          |                   | (1939,<br>42) |                    |
| Luwero                           | U-Central<br>(Bombo)   | 18-2 |          |                   |               | 1948>              |
| Luzinga                          | U-Eastern              | 18-2 |          | 1919>             | v             | v                  |
| Lyantonde                        | U-Central<br>(Masaka)  | 18-2 |          |                   |               | 1947>              |
| Machakos                         | K-Machakos             | 17-5 | 1897>    | v                 | v             | v                  |
| Machakos<br>Road                 | K-Machakos             | 17-5 |          | 1904-09           |               |                    |
| Macabler<br>Mines                | K-Kisumu               | 17-7 |          |                   |               | 1857>              |
| Mackinnon<br>Road                | K-Kwale                | 17-5 |          | 1904>             | v             | <1956              |
| Mafia<br>O.H.B.M.S.              | T-Pwani                | 19-2 |          | <1915             |               |                    |
| Mafia British<br>Occupation      | T-Pwani                | 19-2 |          | 1915              | (1935)        | (1962)             |
| Mafia Tschole                    | T-Pwani                | 19-2 |          | 1902 (G)>         |               |                    |
| Magadi                           | K-Kajiado              | 17-7 |          |                   | 1930>         | v                  |
| Magadi<br>Junction               | K-Kajiado              | 17-7 |          | 1912-22           |               |                    |
| Magode                           | U-Eastern<br>(Tororo)  | 18-2 |          |                   | 1934>         | <1961 and<br>1962> |
| Mahenge                          | T-Morogoro             | 19-3 |          | 1901 (G)>         |               |                    |
| Majengo                          | K-Mombasa              | 17-5 |          |                   |               | 1951-57            |
| Maji ya Chumvi                   | K-Kwale                | 17-5 |          | 1904-18           |               |                    |
| Maji Mazuri                      | K-Nairobi              | 17-6 |          |                   | 1925>         | v                  |
| Makadara                         | K-Nairobi              | 17-6 |          |                   |               | 1955-58            |
| Makindu                          | K-Makueni              | 17-5 |          | 1900-18;<br>1921> | v             | v                  |
| Makongeni                        | K-Nairobi              | 17-6 |          |                   |               |                    |
| Makunduchi                       | T-Zanzibar             | 20-6 |          |                   | 1931>         | v                  |
| Makupa Road                      | K-Mombasa              | 17-5 |          |                   |               | 1957>              |
| Makuyu                           | K-Muranga              | 17-6 |          | 1922>             | v             | v                  |
| Malakote                         | K-Lamu                 | 3-1  | 1896 (G) |                   |               |                    |
| Malindi<br>(Melindi)             | K-Kilifi               | 17-5 | 1892>    | v                 | v             | v                  |



African Postal Heritage; African Studies Centre Leiden; APH Paper 21; Ton Dietz  
Kenya, Uganda and Tanganyika 1935-1963; Version July 2017

|                       |                            |      |           |        |                  |         |
|-----------------------|----------------------------|------|-----------|--------|------------------|---------|
| Manda (was Wiedhafen) | T-Ruvuma                   | 19-3 |           | ?      |                  |         |
| Mandera               | K-Mandera                  | 17-5 |           |        | 1943>            | v       |
| Mangapwani            | T-Zanzibar                 | 20-6 |           |        | 1931>            | <1959   |
| Mantare               | T-Mwanza                   | 19-1 |           |        |                  | (1963)  |
| Manyani Camp          | K-Taita Taveta             | 17-5 |           | 1904>  | v                | <1956   |
| Manyoni               | T-Singida                  | 19-3 |           |        | (1922)           |         |
| Mara                  | K-Narok                    | 17-7 |           | 1917>  | <1923            |         |
| Maracha               | U-Eastern (Tororo)         | 18-2 |           |        |                  | 1962>   |
| Maragoli              | K-Vihiga                   | 17-7 |           |        |                  | 1948>   |
| Maragua               | K-Muranga                  | 17-6 |           |        | 1926>            | v       |
| Maralal               | K-Samburu                  | 17-7 |           |        |                  | 1946>   |
| Marangi               | T-Kilimanjaro              | 19-1 | 1897 (G)> | <1900  |                  |         |
| Mariakani             | K-Kilifi                   | 17-5 |           | 1910>  | v                | v       |
| Marigat               | K-Baringo                  | 17-7 |           |        |                  | 1960>   |
| Marige                | K-Kiambu                   | 17-6 |           |        |                  | 1955>   |
| Marsabit              | K-Marsabit                 | 17-5 |           |        | 1943>            | v       |
| Masaka (was: Buddu)   | U-Central                  | 18-2 |           | 1903>  | v                | v       |
| Maseno                | K-Kisumu                   | 17-7 |           |        |                  | 1947>   |
| Maseno Bunyore        | K-Kisumu                   | 17-7 |           |        |                  | 1962>   |
| Masii                 | K-Machakos                 | 17-5 |           |        |                  | 1961-63 |
| Masinde = Mazinde     | T-Tanga                    | 19-2 | C 1896    |        |                  |         |
| Masindi               | U-Western                  | 18-2 | 1898>     | v      | v                | v       |
| Masindi Port          | U-Western                  | 18-2 |           |        | 1934>            | v       |
| Masongaleni           | K-Makueni                  | 17-5 |           | 1904>  | v                | <1960   |
|                       |                            |      |           |        |                  |         |
| Matathia              | K-Kiambu                   | 17-6 |           |        |                  | 1948>   |
|                       |                            |      |           |        |                  |         |
| Maungu                | K-Taita Taveta             | 17-5 |           | 1904>  | 1923;<br>1927-36 |         |
| Maua                  | K-Meru                     | 17-5 |           |        |                  | 1959>   |
| Mau Narok             | K-Nakuru                   | 17-7 |           |        |                  | 1955>   |
| Mau Summit            | K-Kericho                  | 17-7 |           | 1919>  | v                | v       |
| Mawera                | T-Zanzibar                 | 20-6 |           |        | 1922-25          |         |
| Mazeras               | K-Kilifi                   | 17-5 |           | 1921>  | v                | v       |
| Mazinde               | See Masinde                | 19-2 |           |        |                  |         |
| Mbagathi              | K-Nairobi                  | 17-6 |           |        |                  | 1962>   |
| Mbale                 | U-Eastern (Bugwere Distr.) | 18-2 |           | 1904>  | v                | v       |
| Mbaranga              | K-Meru                     | 17-5 |           | (1920) |                  |         |
| Mbarara (was: Ankole) | U-Western                  | 18-2 |           | 1914>  | v                | v       |
| Mbari ya Njiku        | K-Nairobi /K-Kiambu        | 17-6 |           |        |                  | 1957>   |
| Mbeya                 | T-Mbeya                    | 19-3 |           |        | (1937)           | (1955)  |
| Mbololo               | K-Taita Taveta             | 17-5 |           |        |                  | 1954-56 |

African Postal Heritage; African Studies Centre Leiden; APH Paper 21; Ton Dietz  
Kenya, Uganda and Tanganyika 1935-1963; Version July 2017

|                     |  |      |           |                   |         |                   |
|---------------------|--|------|-----------|-------------------|---------|-------------------|
| Mbulamuti           | U-Eastern (Kamuli)                     | 18-2 |           | 1915>             | v       | v                 |
| Mbulu = Umbulu      | T-Manyara                              | 19-1 |           | 1902 (G)>         | v       | v                 |
| Mdandu              | T-Iringa                               | 19-3 |           |                   | (1920s) |                   |
| Melindi             | See Malindi                            |      |           |                   |         |                   |
| Menengai            | K-Nakuru                               | 17-7 |           |                   | 1926>   | <1957;<br>1961>   |
| Mengo               | U-Central (1st capital city of Uganda) | 18-2 |           | 1900-02           |         | 1949>             |
| Meru                | K-Meru                                 | 17-5 |           |                   | 1937>   | v                 |
| Migori              | K-Migori                               | 17-7 |           |                   |         | 1953-54           |
| Mikandani           | See Kindani                            | 19-2 |           |                   |         |                   |
| Milton's Siding     | K-Nakuru                               | 17-7 |           |                   | 1931>   | v                 |
| Mingoyo             | T-DES                                  | 19-2 |           |                   |         | (1957)            |
| Miritini            | K-Mombasa                              | 17-5 |           | 1917-18;<br>1919> | <1936   |                   |
| Mirogi              |  |      |           |                   |         | (1950, 54,<br>63) |
| Mitaboni            | K-Machakos                             | 17-5 |           |                   |         | 1960>             |
| Mitala Maria        | U-Central (Mpigi)                      | 18-2 |           |                   |         | 1947>             |
| Mitchell Park       | K-Nairobi                              | 17-6 |           |                   |         | 1952>             |
| Mittelland-bahnpost | T                                      | 19-3 |           | (1914-16)<br>G    |         |                   |
| Mitubiri            | K-Kiambu                               | 17-6 |           |                   | 1927>   | v                 |
| Mityana             | U-Central                              | 18-2 |           | 1914>             |         |                   |
| Miwani              | K-Kisumu                               | 17-7 |           | 1922>             | v       | v                 |
| Mjanji              | U-Eastern (Jinja)                      | 18-2 |           | 1917>             | v       | v                 |
| Mkalama             | T-Singida                              | 19-3 |           | 1902 (G)>         | v       |                   |
| Mkoan(i)            | T-Pemba                                | 20-6 |           | 1909>             | v       | v                 |
| Mkokotoni           | T-Zanzibar                             | 20-6 |           | 1910>             | v       | v                 |
| Mkumbara            | T-Tanga                                | 19-2 |           | 1902 (G)>         | v       |                   |
| Moiben              | K-Uasin Gishu                          | 17-7 |           |                   | 1930>   | v                 |
| Moi's Bridge        | K-Uasin Gishu<br>See<br>Hoey's Br.     | 17-7 |           |                   |         | v                 |
| Molo                | K-Nakuru                               | 17-7 |           | 1908>             | v       | v                 |
| Mombasa             | K-Mombasa                              | 17-5 | 1890>     | v                 | v       | v                 |
| Mombasa Docks       | K-Mombasa                              | 17-5 |           |                   |         | 1957-63           |
| Moroto              | U-Northern                             | 18-2 |           |                   | 1923>   | v                 |
| Moroto Soroti       | U-Northern                             | 18-2 |           |                   |         | (1960)            |
| Moschi = Moshi      | T-Kilimanjaro                          | 19-1 | 1896 (G)> | v                 | v       | v                 |
| Moyale              | K-Marsabit                             | 17-5 |           | 1917-22           | 1943>   | v                 |
| Moyo                | U-Northern                             | 18-2 |           |                   |         | 1947>             |
| Mnyussi             | T-Tanga                                | 19-2 |           | 1902 (G)>         |         |                   |
| Mombo               | T-Tanga                                | 19-2 |           | 1902 (G)>         |         |                   |

African Postal Heritage; African Studies Centre Leiden; APH Paper 21; Ton Dietz  
Kenya, Uganda and Tanganyika 1935-1963; Version July 2017

|                                |                            |               |           |           |                 |              |
|--------------------------------|----------------------------|---------------|-----------|-----------|-----------------|--------------|
| Morogoro                       | T-Morogoro                 | 19-3          |           | 1902 (G)> | (v)             | (1958, 1981) |
| Mpapua                         | T-Morogoro                 | 19-3          | 1895 (G)> | v         |                 |              |
| Mparo                          | U-Western<br>(Kabale)      | 18-2          |           |           |                 | 1960>        |
| Mpenja Mpigi                   | U-Western<br>(Kabale)      | 18-2          |           |           |                 | 1955>        |
| Mpigi                          | U-Central                  | 18-2          |           |           | 1924>           | v            |
| Mpumu<br>Mukono                | U-Central<br>(Mukono)      | 18-2          |           |           |                 | 1958>        |
| Mtito Andei                    | K-Makueni                  | 17-5          |           | 1904>     | <1936;<br>1939> | v            |
| Mtwapa Creek                   | K-Mombasa                  | 17-5          |           |           |                 | 1960>        |
| Muaja                          | T-Mbeya                    | 19-3          |           | 1902 (G)> |                 |              |
| Muansa =<br>Muansa ><br>Mwanza | T-Mwanza                   | 19-1          | 1894 (G)> | <1918 (G) |                 |              |
|                                |                            |               |           |           |                 |              |
| Mubende =<br>Mubendi           | U-Central                  | 18-2          |           | 1916>     | v               | v            |
| Mubendi =<br>Mubende           | U-Central                  | 18-2          |           | 1916>     | v               | v            |
| Muhesa                         | T-Tanga                    | 19-2          |           | 1900 (G)> | v               |              |
| Muhokya                        | U-Western (Fort<br>Portal) | 18-2          |           |           |                 | 1954>        |
| Muhor(r)o><br>Rufiji           | T-Pwani<br>/Kigoma?        | 19-2/<br>19-3 | 1894 (G)> | v         |                 |              |
| Muhoroni                       | K-Kisumu                   | 17-7          |           | 1903>     | v               | v            |
| Mukono                         | U-Central                  | 18-2          |           |           | 1922>           | v            |
| Mukuruweini                    | K-Nyeri                    | 17-6          |           |           |                 | 1955>        |
| Mumias                         | <1902: U;<br>K-Kakamega    | 18-2;<br>17-7 | 1898>     | <1919     |                 | 1947>        |
| Murchison<br>Falls             | U-Northern                 | 18-2          |           |           |                 | 1956>        |
| Murka                          | K-Taita Taveta             | 17-5          |           |           |                 | 1952-60      |
| Murkusi                        | K-Nandi                    | 17-7          |           |           | 1927-31         |              |
| Musoma                         | T-Mara                     | 19-1          |           | 1902 (G)> | <1918<br>(G)    | (v)          |
| Mutomo                         | K-Kitui                    | 17-5          |           |           |                 | 1955>        |
| Mwadi Mine                     | T-Sinyanga                 | 19-1          |           |           |                 | (1963)       |
| Mwanza                         | T-Mwanza                   | 19-1          |           | >1918     | v               | v            |
| Mwatate                        | K-Taita Taveta             | 17-5          |           |           | 1930>           | v            |
| Mwatati                        | See Mwatate                |               |           |           |                 |              |
| Mweiga                         | K-Nyeri                    | 17-6          |           |           | 1929>           | v            |
| Mwingi                         | K-Mwingi                   | 17-5          |           |           |                 | 1950>        |
| Myanga                         | K-Bungoma                  | 17-7          |           |           | 1928>           | v            |
| Nabataba                       | U-Central<br>(Lugazi)      | 18-2          |           |           |                 | 1957>        |
| Nabingora<br>Mubende           | U-Eastern (Jinja)          | 18-2          |           |           |                 | 1953>        |



African Postal Heritage; African Studies Centre Leiden; APH Paper 21; Ton Dietz  
Kenya, Uganda and Tanganyika 1935-1963; Version July 2017

|                 |                         |            |        |           |              |               |
|-----------------|-------------------------|------------|--------|-----------|--------------|---------------|
| Nabieso         | U-Eastern (Apac Distr.) | 18-2       |        | 1917      |              |               |
| Nabusanke       | U-Central (Mpigi)       | 18-2       |        |           |              | 1953>         |
| Nagongera       | U-Eastern (Tororo)      | 18-2       |        |           | 1928>        | v             |
| Naigobia        | U-Eastern (Kaliro)      | 18-2       |        |           |              | 1956-61       |
| Nairobi         | K-Nairobi               | 17-6       | 1899?> | v         | v            | v             |
| Nairobi Airport | K-Nairobi               | 17-6       |        |           |              | 1948-56       |
| Naivasha        | <1902: U; K-Nakuru      | 18-2; 17-7 |        | 1900>     | v            | v             |
| Nakasongla      | U-Central (Bombo)       | 18-2       |        |           |              | 1948>         |
| Nakifuma        | U-Central (Kampala)     | 18-2       |        |           |              | 1948>         |
| Nakitoma        | U-Central               | 18-2       |        |           |              | 1948; 1953-54 |
| Nakivubo        | U-Central (Kampala)     | 18-2       |        |           |              | 1956>         |
| Nakuru          | <1902: U; K-Nakuru      | 18-2; 17-7 |        | 1901>     | v            | v             |
| Nakuru-Dundori  | K-Nakuru                | 17-7       |        |           |              | 1959>         |
| Nakuru Rongeni  | K-Nakuru                | 17-7       |        |           |              | (1961)        |
| Namaganda       | U-Eastern               | 18-2       |        |           | 1928>        | <1956         |
| Namagasali      | U-Eastern (Jinja)       | 18-2       |        | 1913>     | v            | v             |
| Namasaga        | U-Eastern               | 18-2       |        |           |              | (1953)        |
| Namulonge       | U-Central (Kampala)     | 18-2       |        |           |              | 1957>         |
| Nandi Hills     | K-Nandi                 | 17-7       |        |           |              | (1956)        |
| Nanyuki         | K-Laikipia              | 17-7       |        |           | (1934)       | (1955)        |
| Naru Moru       | K-Laikipia              | 17-7       |        |           |              | (1955)        |
| Neu Langenburg  | T-Njombe                | 19-3       |        | (1909)    |              |               |
| Ngambo          | T-Zanzibar              | 20-6       |        |           |              | (1947)        |
| Ngerengere      | T-Morogoro              | 19-3       |        | 1908-12   |              |               |
| Ngobet          | K-Laikipia              | 17-7       |        |           | (1928)       |               |
| Ngomeni         | T-Tanga                 | 19-2       |        | 1902 (G)> |              |               |
| Ngora           | U-Eastern               | 18-2       |        |           | (1926; 1935) | (1961)        |
| Ngudu           | T-Mwanza                | 19-1       |        |           | (1939)       |               |
| Njassa          | T-Ruvuma                | 19-3       |        |           |              |               |
| Njoro           | K-Nakuru                | 17-7       |        | (1909)    | (1923, 32)   | (1949)        |
| North Kinangop  | K-Nyandarua             | 17-6       |        |           |              | (1952-57)     |

African Postal Heritage; African Studies Centre Leiden; APH Paper 21; Ton Dietz  
Kenya, Uganda and Tanganyika 1935-1963; Version July 2017

|                                  |                      |               |           |            |         |             |
|----------------------------------|----------------------|---------------|-----------|------------|---------|-------------|
| Nsinze / Entebbe Airport         | U-Central            | 18-2          |           |            |         | 1951; 1953> |
| Nyeri                            | K-Nyeri              | 17-6          |           |            | (1930)  | (1953-55)   |
| Nzega                            | T-Tabora             | 19-3          |           |            |         | (1954-56)   |
| Oldeani                          | T-Arusha             | 19-1          |           |            | 1935-37 |             |
| Oljoro Orok (also see Lesirko)   | K-Nyandarua          | 17-6          |           |            |         | (1956)      |
| Ol Kalou                         | K-Nyandarua          | 17-6          |           |            |         | (1956)      |
| Pakwach                          | U-Northern           | 18-2          |           |            | (1930)  |             |
| Paliko [= Baker's Fort; Faliko]  | U-Northern           | 18-2          |           | 1907-08    |         |             |
| Pallisa                          | U-Eastern            | 18-2          |           |            |         | (1953)      |
| Pangani                          | T-Tanga              | 19-2          | 1892 (G)> | V (c 1935) |         |             |
| Paquebot                         | K-Mombasa            | 17-5          |           | (1920s)    |         | (1958)      |
| Paquebot DES                     | T-DES                | 19-2          |           | (1920s)    |         |             |
| Paquebot Zanzibar                | T-Zanzibar           | 20-6          |           |            | 1933>   | v           |
|                                  |                      |               |           |            |         |             |
| Pemba > Chakichaki > Chake Chake | T-Pemba              | 20-6          |           | 1901-08    |         |             |
| Polish Refugee Camp              | U-Western            | 18-2          |           |            | 1943>   | <1948       |
| Port Alice > Entebbe             | U-Central            | 18-2          | 1899?     |            |         |             |
| Port Florence                    | K-Kisumu, see Kisumu | 17-7          |           | C 1900     |         |             |
| Port Ugowe                       | K-Kisumu, see Kisumu | 18-2;<br>17-7 |           | C 1900     |         |             |
| Railway Hq                       | K-Nairobi            | 17-6          |           |            |         | (1973)      |
| Rongai                           | K-Nakuru             | 17-7          |           |            | (1933)  | (1956-57)   |
| Rongo Market Kisii               | K-Kisii              | 17-7          |           |            |         | (1966)      |
| Roubaga = Rubaga                 | U-Central            | 18-2          | 1899?     |            |         |             |
| Ruanda                           | R                    | 19-1          |           | 1902 (G)>  | v       |             |
| Rubaga = Roubaga                 | U-Central            | 18-2          | [1899?]   |            |         |             |
| Rufiji (was Muhoro)              | T-Pwani              | 19-2          |           |            | ?       |             |
| Ruiru                            | K-Kiambu             | 17-6          |           |            | (1939)  |             |
| Rumuruti                         | K-Laikipia           | 17-7          |           |            | (1934)  | (1955)      |
| Runienje                         | K-Embu               | 17-5          |           |            |         | (1962)      |
| Runyenji                         | See Runienje         |               |           |            |         |             |
| Sa(a)dani                        | T-Pwani              | 19-2          | 1892 (G)> | v          |         |             |
| Sagana                           | K-Kirinyaga          | 17-6          |           |            | (1939)  |             |
| Salale                           | T-Pwani              | 19-2          |           | 1902 (G)>  |         |             |

African Postal Heritage; African Studies Centre Leiden; APH Paper 21; Ton Dietz  
Kenya, Uganda and Tanganyika 1935-1963; Version July 2017

|                                       |                |      |           |                     |                                  |              |
|---------------------------------------|----------------|------|-----------|---------------------|----------------------------------|--------------|
| Salim Road                            | K-Mombasa      | 17-5 |           |                     |                                  | (1953)       |
| Sare                                  | K-Migori       | 17-7 |           |                     |                                  | (1955)       |
| Schirati                              | T-Mara         | 19-1 |           | 1902 (G)>           | <1918<br>(G)                     |              |
| Shinyanga                             | T-Shinyanga    | 19-1 |           |                     | (1928)                           | (v)          |
| Siga                                  | T-DES          | 19-2 |           | 1902 (G)>           |                                  |              |
| Solai (Lake)                          | K-Nakuru       | 17-7 |           |                     | 1926-32;<br>1944>                | v            |
| Songea                                | T-Ruvuma       | 19-3 | 1899 (G)> | v                   |                                  |              |
| Songhor                               | K-Bungoma      | 17-7 |           |                     | (1937)                           | (1954)       |
| Soroti                                | U-Eastern      | 18-2 |           |                     | (1934;<br>1939)                  | [v]          |
| South Kinangop<br>(also see Kinangop) | K-Nyandarua    | 17-6 |           |                     |                                  | (1956)       |
| Soy                                   | K-Uasin Gishu  | 17-7 |           |                     | (1934,<br>37)                    |              |
| Subukia                               | K-Nakuru       | 17-7 |           |                     |                                  | (1955)       |
| Suyida                                | T-Singida      | 19-3 |           |                     | (1920s)                          |              |
| Tabora                                | T-Tabora       | 19-3 | 1895 (G)> | v                   | (1922)                           | (1947)       |
| Tabora-Kigoma                         | T-TPO          | 19-3 |           |                     |                                  | (1957, 58)   |
| Tanga                                 | T-Tanga        | 19-2 | 1891 (G)> | V (1919,<br>32, 41) |                                  |              |
| Taveta                                | K-Taita Taveta | 17-5 |           | 1914-15<br>(G)      |                                  |              |
| Temple Road                           | K-Nairobi      | 17-6 |           |                     |                                  | (1954)       |
| Thika                                 | K-Kiambu       | 17-6 |           |                     | > 1926<br>(c 1930-<br>35-<br>43) | (1976)       |
| Thomson Falls                         | K-Laikipia     | 17-7 |           |                     |                                  | (1955)       |
| Tororo                                | U-Eastern      | 18-2 |           |                     | (1933;<br>1939)                  | (1955)       |
| Tschole                               | See Mafia      | 19-2 |           |                     |                                  |              |
| Tukuyu                                | T-Mbeya        | 19-3 |           |                     |                                  | (1956, 67)   |
| Turbo                                 | K-Uasin Gishu  | 17-7 |           |                     |                                  | (1953, 1967) |
| Turi                                  | K-Nakuru       | 17-7 |           |                     |                                  | (1949)       |
| Udjiji = Ujiji                        | T-Kigoma       | 19-3 | 1898 (G)> | v                   |                                  |              |
| Ujiji                                 | See Udjiji     | 19-3 |           |                     |                                  |              |
| Ukwala                                | K-Siaya        | 17-7 |           |                     |                                  | (1957)       |
| Umbulu                                | See Mbulu      |      |           |                     |                                  |              |
| Umgutas                               | T-Mbeya        | 19-3 |           |                     | (1938)                           |              |
| Uplands                               | K-Kiambu       | 17-6 |           |                     |                                  | (1956)       |
| Urundi                                | B              | 19-1 |           | 1902 (G)>           | v                                |              |
| Usoke                                 | T-Tabora       | 19-3 |           |                     |                                  | (1957)       |
| Utete                                 | T-DES          | 19-2 |           | 1902 (G)>           |                                  |              |
| Usa River                             | T-Arusha       | 19-1 |           |                     | (1931)                           |              |
| Usambara                              | T-Tanga        | 19-2 |           | 1909-15<br>(G)      |                                  |              |



African Postal Heritage; African Studies Centre Leiden; APH Paper 21; Ton Dietz  
Kenya, Uganda and Tanganyika 1935-1963; Version July 2017

|                          |                |             |                          |                        |        |                                      |
|--------------------------|----------------|-------------|--------------------------|------------------------|--------|--------------------------------------|
| Usumbura                 | B              | 19-1        |                          | 1902 (G)>              | v      |                                      |
| Victoria Street          | K-Nairobi      | 17-6        |                          | (1912)                 |        |                                      |
| Voi                      | K-Taita Taveta | 17-5        |                          |                        | (1937) |                                      |
| Wamunya                  | K-Nairobi      | 17-6        |                          |                        |        | (1959)                               |
| Wasin(i Island)          | K-Kwale        | 17-5        | (1893)                   |                        |        |                                      |
| Westlands                | K-Nairobi      | 17-6        |                          |                        |        | (1952-54)                            |
| Wete                     | T-Pemba        | 20-6        |                          | 1901>                  | v      | v                                    |
| Weti = Wete              |                |             |                          |                        |        |                                      |
| Wiedhafen > Manda        | T-Ruvuma       | 19-3        |                          | 1902-12 (G)            |        |                                      |
| Wilhelmst(h)al > Lushoto | T-Tanga        | 19-2        | 1899 (G)>                | <1918                  |        |                                      |
| Witu                     | K-Lamu         | 17-5<br>3-1 | 1889 (G)                 |                        |        |                                      |
| Wobulenzi                | U-Central      | 18-2        |                          |                        |        | (1952)                               |
| Wugiri                   | T-Tanga        | 19-2        |                          | 1906-07 (G)            |        |                                      |
| Zanzibar                 | T-Zanzibar     | 20-6        | 1890-91 (G)              |                        |        |                                      |
| Zanzibar                 | T-Zanzibar     | 20-6        | 1887-1895 (Brit. Indian) |                        |        |                                      |
| Zanzibar                 | T-Zanzibar     | 20-6        | (1873), 1889> (French)   | <1905                  |        |                                      |
| Zanzibar                 | T-Zanzibar     | 20-6        |                          | 1903> Br. Protectorate | v      | V (+ Independence; part of Tanzania) |
| Ziwani                   | T-Zanzibar     | 20-6        |                          |                        |        | 1948>                                |

## **Information about postal services and post offices in Kenya, Uganda and Tanzania, according to some websites.**

**Postal History of Kenya, according to Posta website (<https://posta.co.ke/site/history/>)**

### **“ A humble beginning**

The Postal history in Kenya dates from the early years of the 17th century. A Portuguese governor was installed in Mombasa in 1592 and official correspondence between the town and the outside world has been recorded from 1610 onwards, carried by ship to Arabia and India and transmitted to Europe by the overland route. Early letters from the interior of Kenya date from about 1848 when the missionaries sent their correspondence by native runners to the Coast for onward transmission.

By 1877 some letters from Coast were being taken north from Lamu to Aden by ships of the British Steam Navigation Company, although the bulk of mail was being transmitted via Zanzibar. A system of mail-runners was developed and expanded by the British East Africa Association, while individual traders and concessionaries organized their own service. That enjoyed the use of distinctive postage stamps in 1889-90.

A regular postal service in British East Africa was introduced in May 1890 and post offices opened in Mombasa and the island of Lamu. Two years later offices were opened at Malindi and Wasini and by 1897 an office was to open at Kilindini, necessitated by the construction of the railway. On 1st July 1895 control of the territory in British East Africa was transferred from the company to the imperial government. The Postmaster of Mombasa was responsible for running the postal service in the territory and in 1901 the Postal Services of British East Africa and Uganda were amalgamated.

### **Early Postal Development**

Postal services at the beginning of the last century had developed rapidly compared with the 1890s, mainly as a result of the construction of the Uganda railway. In 1895, for instance, mail took a fortnight to cover the 394 km between Mombasa and Machakos; ten years later from Mombasa to Nairobi (426 km) it took 28 hours.

Although the railway greatly facilitated the carriage of mail, runners were still employed, while the steamer “Juba” served a number of places on the Coast. In the early years of the last century fewer than 30 post offices, as well as a number of postal agencies existed in the East Africa protectorate at one time or another, although they were not all open at the same time and several of them were short-lived. The post offices in Kenya at this time included; Baringo, Eldama Ravine, Karungu, Kikuyu, Kilindini, Lamu, Machakos, Makindu, Muhoroni, Mombasa, Malindi, Mumias, Nandi, Nairobi, Naivasha, Nakuru, Rabai, Takaungu, Taveta, Voi, Wasini and Port Ugowe (now Kisumu).

### **An East African Postal Service**

On 1st July 1933 a Postal Union of the three East African territories came into operation and was further strengthened by the East African Customs and Postal Union formally introduced on 1st May 1935. Although the East African countries became independent sovereign states between 1961 and 1963, they continued cooperating closely with one another in a number of ways, not the least being their common postal services which culminated into the formation of East African Posts and Telecommunications Corporation (EAP&T) under the Treaty for East African Cooperation which came into effect on 1st December 1967. In 1977, due to the break up of the East African Community, the Kenya Posts and Telecommunications Corporation (KP&TC) was established. In the EAP&TC and KP&TC eras postal services were provided under a department of the larger Corporations.

### **Establishment of PCK**

Due to emerging market and economic trends and spearheaded by the Universal Postal Union (UPU), efforts to separate postal services from those of Telecommunications were initiated in the late 1980s. They bore fruit in Kenya and in July 1999, the KP&TC was split to create, among others, the Postal Corporation of Kenya (PCK) whose mandate under the Postal Corporation Act of 1998 is to provide and operate postal services, postal financial services, and perform other functions and duties as the minister of communications may assign.

In pursuit of this mandate, PCK operates a network of 31 Head Post offices 472 departmental postal outlets and 204 postal agencies (sub-post offices). The population served per post office is 55,630. This is against a universal standard of 6,000 persons per post office. This network is served by a staff complement of 4,114 as at June 2009. Among the products and services of PCK are; letter post, parcels, Expedited Mail Services (EMS), Philately, Postal Financial Services (Money Orders and Postal Orders), Agency Services (Third party payments and receipts) and technology based money transfer services. Those planned for introduction are postal savings service, postal giro services and hybrid mail.

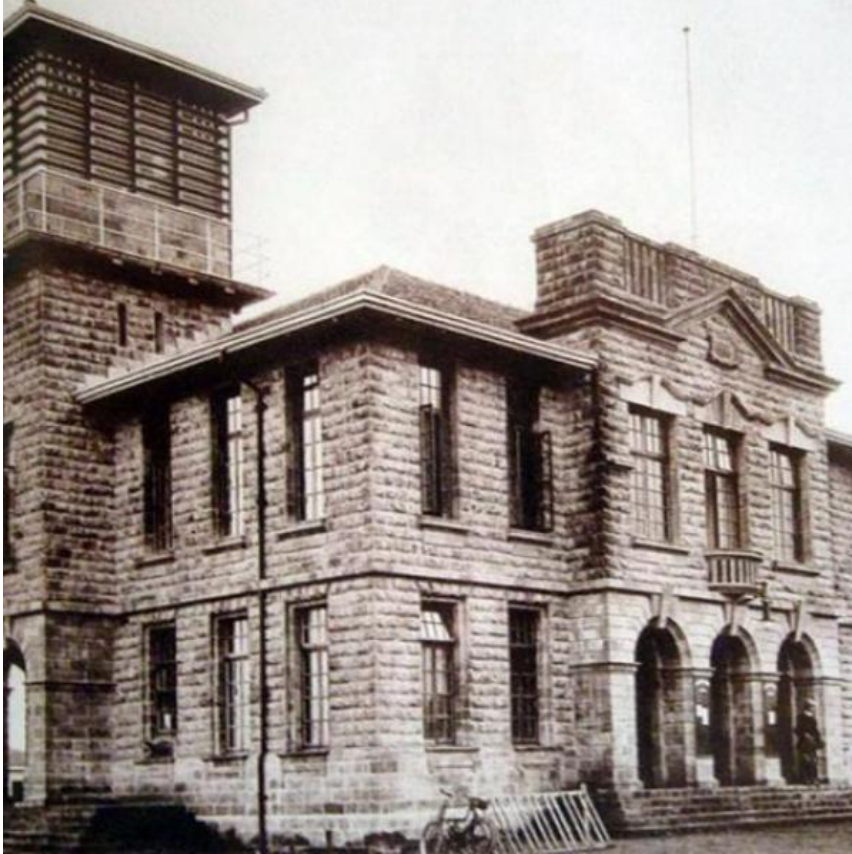
### **Inter-Regional Cooperation**

The Post in Kenya currently cooperates with other postal administrations within East Africa in the provision of Postal Money Transfers through the UPU's electronic International Financial System (IFS). It also has the International Postal System (IPS) that enables track and trace facilities for mail and EMS within UPU member countries. A number of neighbouring postal administrations use Nairobi as their transit point for international mail. Postal Corporation of Kenya in this connection has plans of putting up a modern International Mails Transit Centre at the Jomo Kenyatta International Airport (JKIA), Nairobi".

For the history of Nairobi: see: <http://www.nairobi.go.ke/home/history/> . There it is suggested that the post office started in 1902 ("By 1903 the use of the railway as a medium of exporting produce as well as importing equipment had become noticeable, and there was some talk of finding permanent markets in South Africa. Nairobi was growing at a fast pace and new people arrived with every ship



that docked at Mombasa. There was a little post-office halfway down Government Road, near the new municipal offices, which had been opened the previous year, these offices were grandly known as "Town Hall."").



[http://www.nairobi.go.ke/assets/Uploads/\\_resampled/ResizedImage600600-history6.jpg](http://www.nairobi.go.ke/assets/Uploads/_resampled/ResizedImage600600-history6.jpg): the Post Office in Nairobi.

Also see: [http://www.the-star.co.ke/news/2013/06/19/historic-buildings-still-standing-in-nairobi\\_c788069](http://www.the-star.co.ke/news/2013/06/19/historic-buildings-still-standing-in-nairobi_c788069) : "the Nairobi Post Office built in 1907 and now known as the General Post Office (GPO) still stands at the same spot along Kenyatta Avenue although it has undergone massive reconstruction over the years, changing from what looked like a two-storey building as pictured in the photographs to the multi-storeyed building it is today".

According to [https://en.wikipedia.org/wiki/History\\_of\\_Nairobi](https://en.wikipedia.org/wiki/History_of_Nairobi): "In 1896, work on the railway began. A British railroad camp and supply depot for the Uganda Railway was built in the Maasai area in 1899... The building soon became the railway's headquarters and a town grew up surrounding it, named after a watering hole known in Maasai as Ewaso Nyirobi, meaning "cool waters."

Current list of postal codes in Kenya: <http://kenyanswag.blogspot.nl/2013/05/kenya-postal-codes-addresses.html>

## Uganda: current postal outlets (2017)

according to: <http://www.ugapost.co.ug/node/10>

### Postal Outlets

| POSTAL REGIONS | HPOs & DPOs     | SUB POST OFFICES |
|----------------|-----------------|------------------|
| ARUA           | Arua HPO        | Arua Taxi Park   |
|                |                 | Rhino Camp       |
|                |                 | Kaya             |
|                |                 | Paidha           |
|                |                 | Yumbe            |
|                | Koboko DPO      |                  |
|                | Pakwach DPO     |                  |
|                | Moyo DPO        |                  |
| FORT PORTAL    | Fort Portal HPO | Bundibugyo       |
|                |                 | Butti            |
|                |                 | Kabujogera       |
|                |                 | Kamwenge         |
|                |                 | Kibiito          |
|                |                 | Kyegegwa         |
|                |                 | Kyenjojo         |
|                | Kasese DPO      | Bwera            |
|                |                 | Kilembe          |
|                |                 | Kisinga          |
|                |                 | Lake Katwe       |
| GULU           | GULU DPO        | Atiak            |
|                |                 | Minakulu         |
|                |                 | Pabo             |
|                |                 | Kamdin           |
|                | Lira DPO        | Loro             |
|                |                 | Dokolo           |
|                |                 | Amolatar         |
|                |                 | Kalongo          |
|                | Apac DPO        | Aduku            |
|                | Kitgum DPO      | Pader            |
| HOIMA          | HOIMA DPO       | Bukomera         |
|                |                 | Kagadi           |
|                |                 | Kabiso           |
|                |                 | Kigorobya        |
|                |                 | Nalweyo          |
|                |                 | Kalongo          |
|                |                 | Kiboga           |

|               |                |               |
|---------------|----------------|---------------|
|               |                | Bweyale       |
|               |                | Kinyara       |
|               | Masindi DPO    | Bwijanga      |
|               |                | Kigumba       |
|               |                | Karuma        |
| JINJA         | Jinja DPO      | Mbiko         |
|               |                | Njeru         |
|               |                | Buwenge       |
|               |                | Magamaga      |
|               |                | Nawanyago     |
|               | Oboja Road DPO |               |
|               | Kakira DPO     |               |
|               | Bugiri DPO     |               |
|               | Iganga DPO     | Idudi         |
|               |                | Mayuge        |
|               | Busembatya     | Namutumba     |
|               | Kamuli DPO     |               |
|               | Kaliro DPO     |               |
|               | Mbale DPO      | IUIU - Mbale  |
|               |                | Butaleja      |
|               |                | Budaka        |
|               |                | Magake Market |
| Busiu         |                |               |
| Lwakhaka      |                |               |
| Sironko       |                |               |
| Budadiri      |                |               |
| Pallisa DPO   |                |               |
| Kapchorwa DPO | Bukwo          |               |
| SOROTI        | Soroti DPO     | Gweri Road    |
|               |                | Amuria        |
|               |                | Serere        |
|               |                | Kaberaimaido  |
|               | Ngora DPO      |               |
|               | Kumi DPO       | Bukedea       |
|               | Moroto DPO     | Kotido        |
|               |                | Nakapripit    |
| Tororo DPO    |                |               |
| Busia DPO     |                |               |
| Malaba DPO    |                |               |
| KABALE        | Kabale DPO     | Bukinda       |
|               |                | Katuna        |
|               |                | Mparo         |
|               |                | Murore        |
|               |                | Rubaya        |



|                 |                  |                     |
|-----------------|------------------|---------------------|
|                 |                  | Kisiizi             |
|                 | Kisoro DPO       | Rubuguri            |
|                 |                  | Busanza             |
|                 |                  | Bunagana            |
|                 |                  | Kyanika             |
| KAMPALA-ENTEBBE | Kampala DPO      | Bwaise              |
|                 |                  | Luzira              |
|                 |                  | Bujuko              |
|                 |                  | Jjeza               |
|                 |                  | Nadangira           |
|                 |                  | Nansana             |
|                 |                  | Wakiso              |
|                 |                  | Busunju             |
|                 |                  | Ntinda              |
|                 | KIU              |                     |
|                 | Clock Tower      | Kajansi             |
|                 | Kibuye DPO       |                     |
|                 | Kyambogo DPO     |                     |
|                 | Mengo DPO        | Natete              |
|                 |                  | Bulenga             |
|                 |                  | Kyengerera          |
|                 | Nakawa DPO       | Kireka              |
|                 |                  | Seeta               |
|                 | Nakivubo DPO     |                     |
|                 | Wandegeya DPO    | Kawempe             |
| Matugga         |                  |                     |
| Mulago          |                  |                     |
| Kasangati       |                  |                     |
| Namulonge       |                  |                     |
| Bombo DPO       | Bamunanika       |                     |
| MPIGI           | Mpigi DPO        | Kamengo             |
|                 |                  | Maddu               |
|                 |                  | Buulo               |
|                 |                  | Buwama              |
|                 |                  | Kayambwe            |
| ENTEBBE         | Entebbe Main DPO | Abaita Ababiri      |
|                 |                  | Kisubi              |
|                 |                  | Entebbe Airport DPO |
| MUKONO          | Mukono DPO       | Mukono University   |
|                 |                  | Nkonkonjeru         |
|                 |                  | Kayunga             |
|                 |                  | Naggalama           |
|                 |                  | Kisoga              |
|                 |                  | Maddu               |

African Postal Heritage; African Studies Centre Leiden; APH Paper 21; Ton Dietz  
Kenya, Uganda and Tanganyika 1935-1963; Version July 2017

|             |               |             |
|-------------|---------------|-------------|
|             |               | Katosi      |
|             | Lugazi        |             |
| MUBENDE     | Mubende DPO   |             |
|             | Mityana DPO   | Karuguuza   |
|             | Kakumiro DPO  |             |
| LUWEERO     | Luweero DPO   | Kiwoko      |
|             |               | Kakooge     |
|             |               | Migyera     |
|             |               | Wabigalo    |
|             |               | Nakasongola |
|             | Wobulenzi DPO | Nakaseke    |
| MASAKA      | Masaka DPO    | Lukaya      |
|             |               | Kyazanga    |
|             |               | Sembabule   |
|             |               | Matete      |
|             |               | Kalangala   |
|             |               | Kyotera     |
|             |               | Rakai       |
|             | Kalisizo      |             |
| MBARARA     | Mbarara DPO   | Lyantonde   |
|             |               | Kabwohe     |
|             |               | Ishingiro   |
|             |               | Rugaaga     |
|             |               | Rubindi     |
|             |               | Kikagati    |
|             |               | Rushere     |
|             |               | Buteraniro  |
|             |               | Kazo        |
|             |               | Kiruhura    |
|             |               | Kabujongera |
|             |               | Kanoni      |
|             |               | Kihonzi     |
|             |               | Igayaza     |
|             |               | Kabagore    |
|             |               | Ntungamo    |
|             |               | Rwashamire  |
|             |               | Rubaare     |
| Ibanda      |               |             |
| Bwizibwera  |               |             |
| Ishongororo |               |             |
| BUSHENYI    | Bushenyi DPO  | Ishaka      |
|             |               | Kyamuhunga  |
|             |               | Butare      |
|             |               | Murembo     |

|           |               |          |
|-----------|---------------|----------|
|           |               | Mitooma  |
|           |               | Katerera |
|           |               | Rubirizi |
| RUKUNGIRI | Rukungiri DPO | Kihihi   |
|           |               | Kambuga  |
|           |               | Butogota |
|           |               | Kanungu  |
|           |               | Buyanja  |

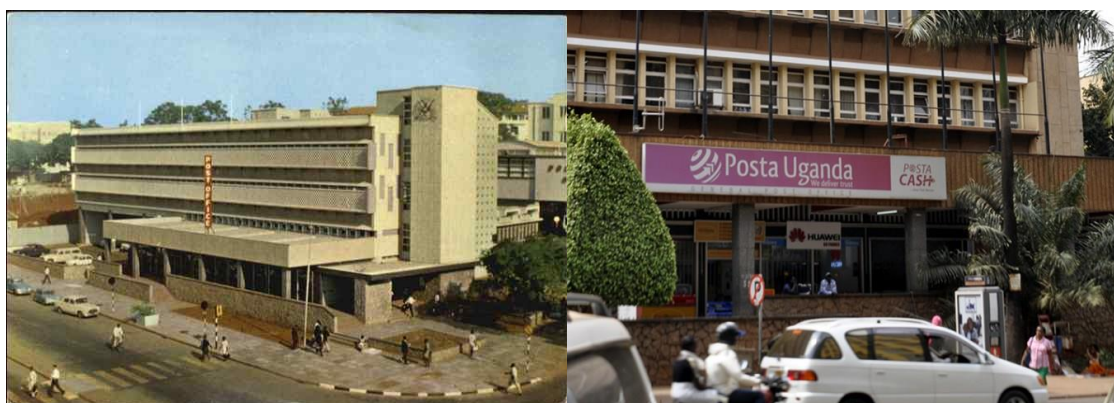
On Wikipedia ([https://en.wikipedia.org/wiki/Posta\\_Uganda](https://en.wikipedia.org/wiki/Posta_Uganda)).

Uganda Post Limited was founded as part of the East African Community... The East African Post and Telecommunications Act in 1951 organized the postal system according to an agreement between the Kenya Colony, the Uganda Protectorate, and the Tanganyika Territory... The 1977 dissolution of the East African Community voided the East African Post and Telecommunications Act. The East African Post and Telecommunications Corporation (EAPTC) was replaced by the Uganda Posts and Telecommunication Corporation (UPTC), although this was not legalized by the parliament of Uganda until 1983.<sup>[1]</sup>

In 1998, as part of an ongoing government effort to loosen controls over Uganda's communication sector, the UPTC was split into the following independent companies:..

- Posta Uganda Limited
- Uganda Telecom Limited
- Post Bank Uganda Limited
- Uganda Communications Commission, the industry sector regulator.

Uganda Post Limited was given control over the postal service and the 1997 Communications Act split Uganda Post Limited into a million shares, each valued at Ushs 25,000... The Ministry of Finance owns an overwhelming majority with 999,999 shares, with the one remaining share owned by the Ministry of Works, Housing, and Urban Development... Although Uganda Post Limited has changed its name to Posta Uganda, the postal service has not been privatized...

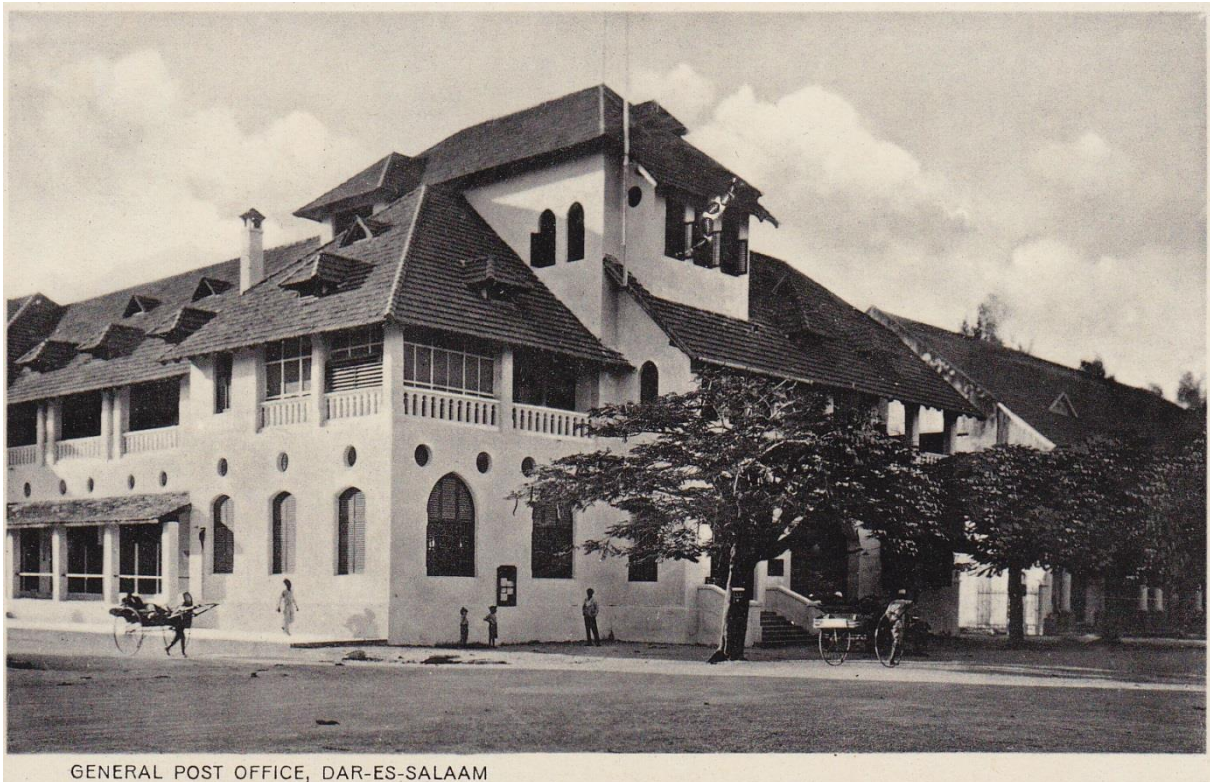


[https://www.cardcow.com/images/set140/card00618\\_fr.jpg](https://www.cardcow.com/images/set140/card00618_fr.jpg) : Post Office Kampala

[https://thirdgoaltravel.com/wp-content/uploads/2017/03/301\\_kampala-post-office.jpg](https://thirdgoaltravel.com/wp-content/uploads/2017/03/301_kampala-post-office.jpg)

## Tanzania





<https://kihm5.files.wordpress.com/2011/07/dar-es-salaam-po.jpg>



<http://www.greatmirror.com/images/medium/030940.jpg>

**Wikipedia about the history of Postal services in Tanzania (retrieved July 2017):**

### **“German Postal Services**

A German postal agency was established on 27 February 1885 in Lamu using German stamps for mail... The Postal Service was operated jointly along with telegraph service administered under the German East African authority. Mail was carried from the colony to Europe using steamers and only post offices along the coast had regular service. At its peak the government operated 54 post offices (1913). The German government also had set up a network of telegraphs and telephones, In 1914 there were 34 telegraph offices operating 2,537 kilometers of land lines...

### **British Takeover and East African Postal Services**

After the British took over control of Tanganyika, the postal service was handled by them. The British consolidated all the postal and communication entities in Kenya, Uganda and Tanganyika (KUT) under the umbrella of the East African Posts and Telecommunications Administration... Even post-independence in the early 1960s the postal and communications services were managed under the newly formed East African Community... However, after the East African community was dissolved in 1977 the Tanzanian government established the Tanzania Posts and Telecommunications Corporation (TP&TC)...

### **Formation of Tanzania Posts Corporation**

On December 31, 1993, the parliament enacted multiple laws to help deregulate the operations of posts and telecommunications in increase their autonomy and efficiency. Following this three new independent organizations were created...

The Tanzania Posts Corporation (TPC) fully owned by the government of Tanzania in a form of a public corporation.

The Tanzania Telecommunications Company Limited (TTCL) as a limited liability public company.

The Tanzania Broadcasting Center as the government public broadcasting channel for TV and Am Radio”.

### **Post Office Distribution**

---



Kigoma Post Office (picture:

[https://upload.wikimedia.org/wikipedia/commons/thumb/b/b4/Kigoma\\_Post\\_Office.jpg/220px-Kigoma\\_Post\\_Office.jpg](https://upload.wikimedia.org/wikipedia/commons/thumb/b/b4/Kigoma_Post_Office.jpg/220px-Kigoma_Post_Office.jpg) ).

The Posts Corporation is mandated to run as a corporation without receiving funds from the Budget. This means that the corporation had to consolidate a large number of its loss making branches. To help serve the rural population continue to have access to the service the corporation started to franchise post offices. The Posts Corporation operates its mail delivery network using three types of post offices: Departmental Post Offices; Franchised Post offices and SUB post offices....

| Region               | Postal Code | Departmental | Franchised | SUB | Total | Zone               |
|----------------------|-------------|--------------|------------|-----|-------|--------------------|
| Arusha Region        | 23xxx       | 16           | 1          | 1   | 27    | Northern           |
| Dar es Salaam Region | 1xxxx       | 28           | 6          | 6   | 40    | Coastal            |
| Dodoma Region        | 41xxx       | 4            | 12         | 8   | 24    | Central            |
| Iringa Region        | 51xxx       | 5            | 7          | 9   | 21    | Southern Highlands |
| Kagera Region        | 35xxx       | 8            | 4          | 8   | 20    | Lake               |
| Kigoma Region        | 47xxx       | 4            | 3          | 8   | 15    | Lake               |
| Kilimanjaro Region   | 25xxx       | 12           | 7          | 24  | 43    | Northern           |
| Lindi Region         | 65xxx       | 3            | 3          | 4   | 10    | Coastal            |



| Region                                       | Postal Code | Departmental | Franchised | SUB        | Total      | Zone               |
|--|-------------|--------------|------------|------------|------------|--------------------|
| Mara Region                                  | 31xxx       | 4            | 1          | 1          | 6          | Lake               |
| Mbeya Region                                 | 53xxx       | 9            | 6          | 6          | 21         | Southern Highlands |
| Morogoro Region                              | 67xxx       | 9            | 10         | 5          | 24         | Coastal            |
| Mtwara Region                                | 63xxx       | 4            | 2          | 6          | 12         | Coastal            |
| Mwanza Region                                | 33xxx       | 10           | 8          | 9          | 27         | Lake               |
| Ruvuma Region                                | 57xxx       | 3            | 2          | 3          | 8          | Southern Highlands |
| Shinyanga Region                             | 37xxx       | 8            | 2          | 8          | 18         | Lake               |
| Singida Region                               | 43xxx       | 4            | 2          | 6          | 12         | Central            |
| Tabora Region                                | 45xxx       | 6            | 5          | 15         | 26         | Central            |
| Tanga Region                                 | 21xxx       | 10           | 4          | 12         | 26         | Northern           |
| Zanzibar Isles                               | 7xxxx       | 5            | 4          | 2          | 11         | Zanzibar           |
|  |             | <b>154</b>   | <b>90</b>  | <b>155</b> | <b>399</b> |                    |
| <b>Source: Tanzania Posts Corporation...</b> |             |              |            |            |            |                    |

[https://en.wikipedia.org/wiki/Tanzania\\_Posts\\_Corporation](https://en.wikipedia.org/wiki/Tanzania_Posts_Corporation) (see: <http://www.posta.co.tz/postoffices.pdf>, for a complete list of post offices in 2015).

“Tanzania Posts Corporation (TPC) was established in 1994 to provide a national postal service within the United Republic, and a link between Tanzania and the world.

As a Designated National Public Postal Operator, TPC business and service portfolio are segmented into:-

Mails & Parcel Logistics, Courier & Express, Financial & Agency, ICT application services, as well as design, install and rent private mail delivery boxes & bags, design, production and sale of philately products and other retail services which include sale of stationery and equipment for office and school use”.

<http://www.posta.co.tz/about.htm>