



Universiteit
Leiden



African Studies Centre Leiden

African Postal Heritage

APH Paper nr 19, part 2

Ton Dietz

Tanzania Postmarks: Tanzania Coast

Version May 2017

Introduction

Postage stamps and related objects are miniature communication tools, and they tell a story about cultural and political identities and about artistic forms of identity expressions. They are part of the world's material heritage, and part of history. Ever more of this postal heritage becomes available online, published by stamp collectors' organizations, auction houses, commercial stamp shops, online catalogues, and individual collectors. Virtually collecting postage stamps and postal history has recently become a possibility. These working papers about Africa are examples of what can be done. But they are work-in-progress! Everyone who would like to contribute, by sending corrections, additions, and new area studies can do so by sending an email message to the APH editor: Ton Dietz (dietzaj@asc.leidenuniv.nl). You are welcome!

Disclaimer: illustrations and some texts are copied from internet sources that are publicly available. All sources have been mentioned. If there are claims about the copy rights of these sources, please send an email to

African Studies Centre Leiden
P.O. Box 9555
2300 RB Leiden
The Netherlands

Telephone	+31-71-5273372
E-mail	asc@asc.leidenuniv.nl
Website	http://www.ascleiden.nl
Facebook	www.facebook.nl/ascleiden
Twitter	www.twitter.com/ascleiden
Countryportal	http://countryportal.ascleiden.nl

Illustrations cover page:

ASC Leiden postage stamp Nederland (2011): ©African Studies Centre Leiden

Cape of Good Hope postage stamp 1853:

http://upload.wikimedia.org/wikipedia/commons/thumb/7/7c/Cape_Triangular_Postage_Stamp.jpg/400px-Cape_Triangular_Postage_Stamp.jpg

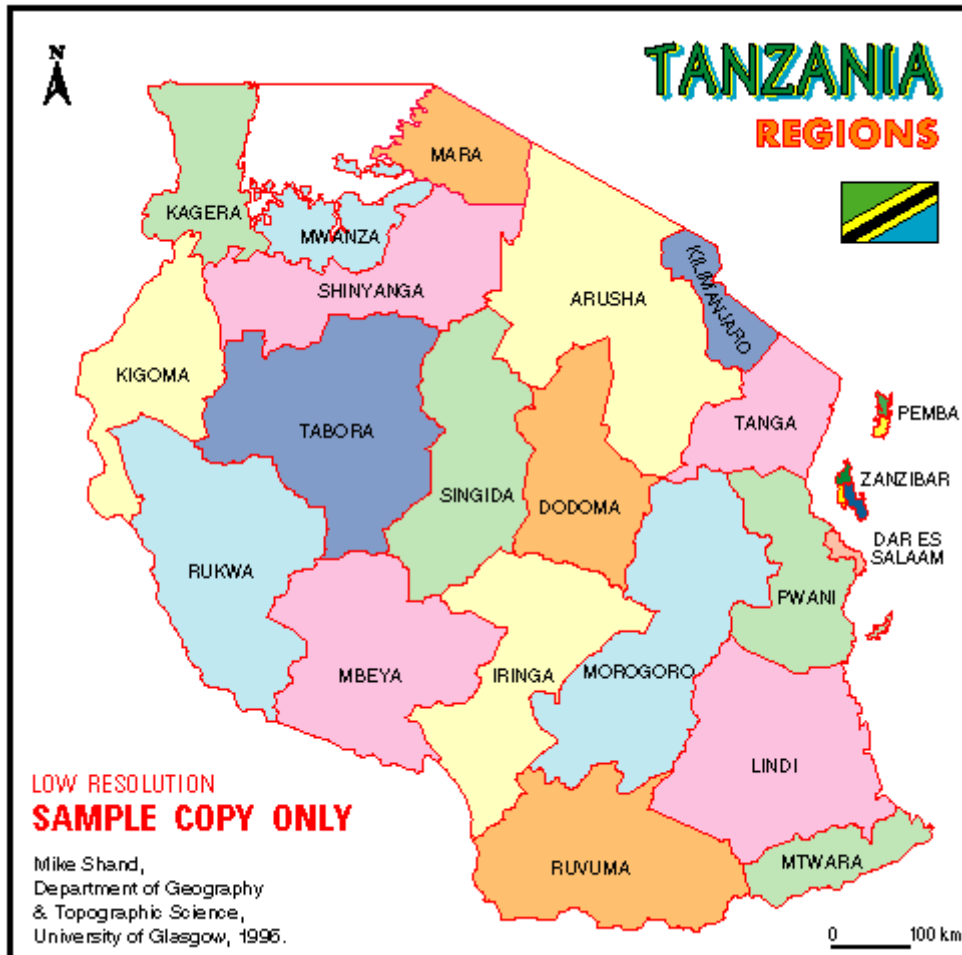
Egypt postage stamp 1914:

https://upload.wikimedia.org/wikipedia/commons/4/4b/Post_Stamp_Egypt.jpg

Table of Contents

Part 1: Northern Tanzania	1
Kagera	
Mwanza/Geita	
Shinyanga/Simiyu	
Mara	
Arusha/Manyara	
Kilimanjaro	
German Post Offices in Ruanda and Urundi	
Part 2: Tanzania: Coast	30
Tanga	
Pwani	
Dar es Salaam	
Lindi	
Mtwara	
Part 3: Southern Tanzania	73
Kigoma	
Rukwa/Katavi	
Tabora	
Mbeya	
Singida	
Dodoma	
Iringa/Njombe	
Morogoro	
Ruvuma	
Other postmarks	

Tanzania: Coast



<http://old.tanzaniaprojektet.se/F/maps/10.gif>

Tanga Region



Current administrative structure: Handeni District Council, Handeni Town Council, Kilindi District Council, Korogwe Town Council, Korogwe District Council, Lushoto District Council (Usambara Mountains), Muheza District Council, Mkinga District Council, Pangani District Council, Tanga City Council

Handeni (German Post Office after 1902)



<http://www.germanpostalhistory.com/php/viewitem.php?itemid=69484&germany%20cover=search&>

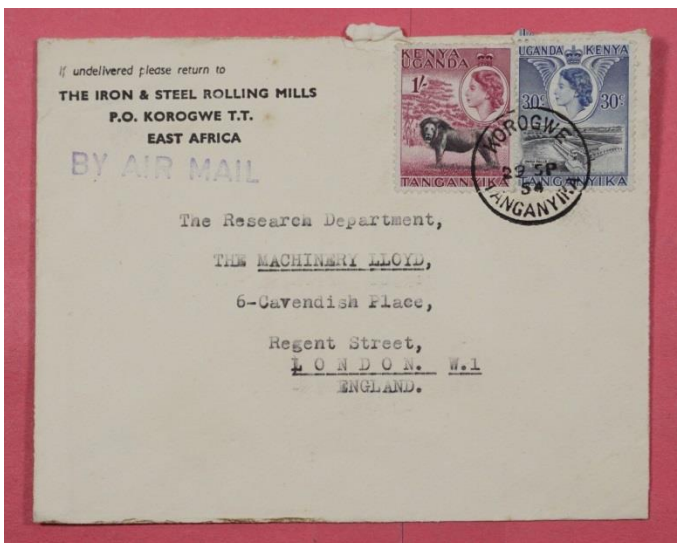
Korogwe (German Post Office after 1902)



<http://www.germanpostalhistory.com/php/viewitem.php?itemid=69480&germany%20cover=search&>



<http://thumbs1.ebaystatic.com/d/l225/m/mjLLb8twZ-98-JKl1ij7Ktg.jpg>



[http://i.ebayimg.com/00/s/MTI3MVgxNjAw/z/~RcAAOSw32IYzIHd/\\$ 57.JPG](http://i.ebayimg.com/00/s/MTI3MVgxNjAw/z/~RcAAOSw32IYzIHd/$ 57.JPG)

Mkumbara, near Korogwe (German Post Office after 1902)



http://philabild.de/nordphila/bilder/mittel_900/0119135.jpg



<http://www.germanpostalhistory.com/php/viewitem.php?itemid=69500&germany%20cover=search&>

Lushoto = Wilhelmst(h)al during Deutsch Ostafrika (German Post Office since 1899)



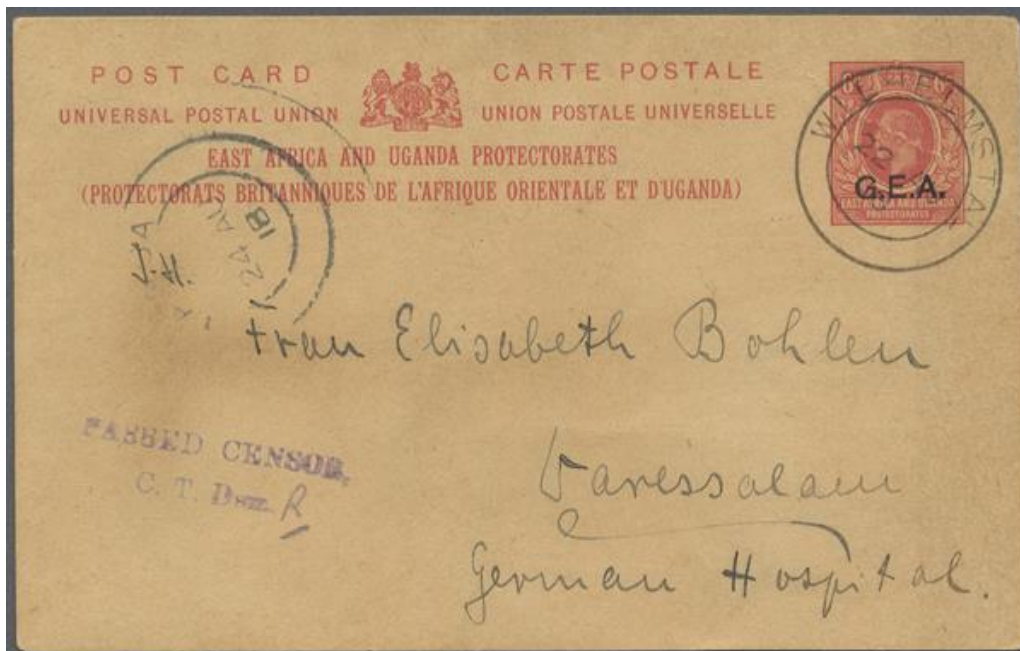
<http://thumbs.ebaystatic.com/images/g/kckAAOSw32lYnyE~/s-l225.jpg>



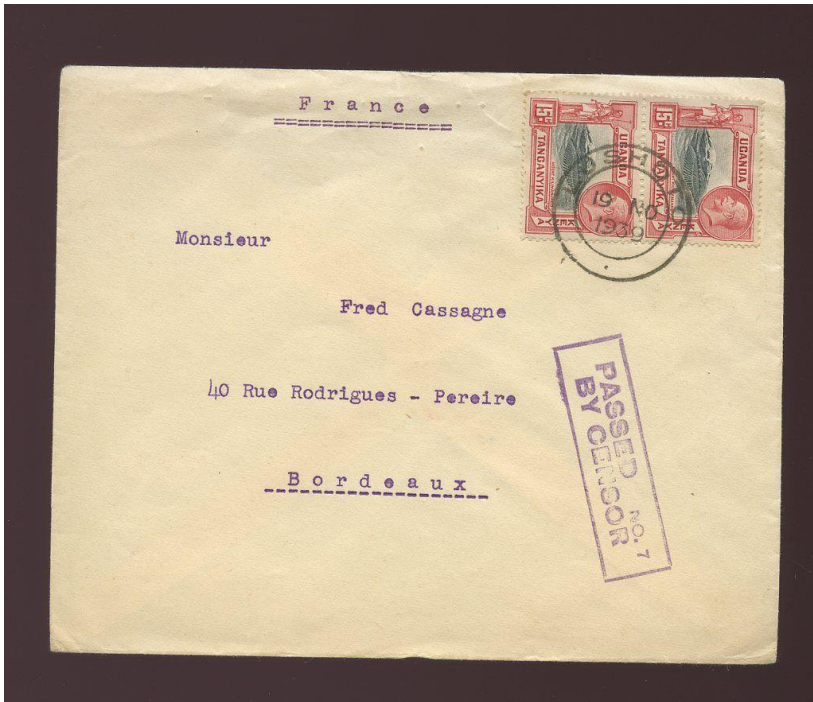
<http://www.germanpostalhistory.com/php/viewitem.php?itemid=69493&germany%20cover=search&>



<https://www.cherrystoneauctions.com/auctionscans201012/45.jpg>



<http://img.collectorcircuit.com/gart33/s465125.jpg>



[http://i.ebayimg.com/00/s/ODgwWDEwMig=/z/V08AAOSw-itXtO7f/\\$_57.JPG](http://i.ebayimg.com/00/s/ODgwWDEwMig=/z/V08AAOSw-itXtO7f/$_57.JPG)



<http://thumbs1.ebaystatic.com/images/g/nbkAAOSwGIRXYZ5d/s-l225.jpg>

Buiko (German Post Office after 1902)



<http://www.germanpostalhistory.com/inventory/thumbnails/78780t.jpg>

**Masinde/Mazinde (near Wilhelmstal) , temporary German Post Office, ca
1896**



<https://s-media-cache-ak0.pinimg.com/236x/1f/49/b0/1f49b058a4a8cdc7dd91c824110df12f.jpg>

**Amani (agricultural station in Usambara Mountains) (German Post Office
after 1902)**



http://www.germanpostalhistory.com/php/searchviewpage.php?country_spec=Mailsales.mailsale168&pagenum=9&orderby=3&



<http://img.collectorcircuit.com/files/dr.reinhard-fischer/stampauction/public-stamps-briefmarken-auction-137/02804.jpg>



<https://encrypted-tbn1.gstatic.com/images?q=tbn:ANd9GcQf47FTZsYh2Xxl6iyAOSNxjVOKbw87DrLyyhRbZ4hS2bwcgXuL>

Muhesa (German Post Office since 1900)



<http://thumbs.ebaystatic.com/images/g/~R8AAOSw~AVYoUjY/s-l225.jpg>



<http://www.germanpostalhistory.com/php/viewitem.php?itemid=69017&germany%20cover=search&>

Pangani (German Post Office since 15/6/1892)



<http://briefmarken.briefmarkenauktion.net/media/images/markmed/03339.jpg>

<https://www.auction-galleries.de/imagedata/3/detail/3-1507-2.jpg>



<http://www.germanpostalhistory.com/php/viewitem.php?itemid=69490&germany%20cover=search&>



<http://www.kut-stamps.com/Tanganyika Postmarks and Covers/PANGANI.jpg>



[http://i.ebayimg.com/00/s/MTMxMlgxNjAw/z/rdMAAOSwKlpWCFd-/\\$_57.JPG](http://i.ebayimg.com/00/s/MTMxMlgxNjAw/z/rdMAAOSwKlpWCFd-/$_57.JPG)

Wugiri, near Pangani (German Post Office, period unknown; also telegraph office)



[www.delcampe.net/items?catLists\[0\]=2678&language=G&searchOptionForm\[searchTldCountry\]=net
&searchSt ring=&page=3&useAsDefault=](http://www.delcampe.net/items?catLists[0]=2678&language=G&searchOptionForm[searchTldCountry]=net&searchSt ring=&page=3&useAsDefault=)

[https://encrypted-
tbn3.gstatic.com/images?q=tbn:ANd9GcSChyRJz7s28YA8jbbbjgW_OYICITZfyiXGIKbX0Fo472NXZHxGO
g](https://encrypted-tbn3.gstatic.com/images?q=tbn:ANd9GcSChyRJz7s28YA8jbbbjgW_OYICITZfyiXGIKbX0Fo472NXZHxGOg)

Tanga (German Post Office since 5/5/1891)



[https://encrypted-tbn3.gstatic.com/images?q=tbn:ANd9GcRZiZE5x7Yx7zFL8n90ukfeQgu-
CT0siXvA3HoqXe3QP3lrkZnK](https://encrypted-tbn3.gstatic.com/images?q=tbn:ANd9GcRZiZE5x7Yx7zFL8n90ukfeQgu-CT0siXvA3HoqXe3QP3lrkZnK)

[https://upload.wikimedia.org/wikipedia/commons/thumb/7/79/Stamp_German_East_Africa_1893_10p.
jpg/170px-Stamp_German_East_Africa_1893_10p.jpg](https://upload.wikimedia.org/wikipedia/commons/thumb/7/79/Stamp_German_East_Africa_1893_10p.jpg/170px-Stamp_German_East_Africa_1893_10p.jpg)

<http://thumbs.ebaystatic.com/images/g/PFYAAOSwr~lYnyC0/s-l225.jpg>



[http://i.ebayimg.com/00/s/MTExm1gxNjAw/z/pL4AAOSwVL1WC8hz/\\$_57.JPG](http://i.ebayimg.com/00/s/MTExm1gxNjAw/z/pL4AAOSwVL1WC8hz/$_57.JPG)



<http://i.ebayimg.com/images/g/ST4AAOSw~y9ZBGKo/s-l1600.jpg>



<http://www.kut-stamps.com/Tanganyika Postmarks and Covers/TANGA.jpg>



[http://i.ebayimg.com/00/s/NzlwWDk2MA==/z/A4oAAOSwjDZYhJ13/\\$ 57.JPG](http://i.ebayimg.com/00/s/NzlwWDk2MA==/z/A4oAAOSwjDZYhJ13/$ 57.JPG)

Mnyussi, near Tanga? (German Post Office after 1902)



<http://thumbs.ebaystatic.com/images/g/YMAAAOSwuLZY6Fec/s-l225.jpg>

<http://thumbs.ebaystatic.com/images/g/eEAAOSwAuZX3FzB/s-l225.jpg>

Mombo (German Post Office after 1902)



[http://www.germanpostalhistory.com/php/viewitem.php?itemid=69018&germany%20cover=search
&](http://www.germanpostalhistory.com/php/viewitem.php?itemid=69018&germany%20cover=search&)



<http://img.collectorcircuit.com/files/gert-mueller-auktion/stampauction/public-auction-80/b02287.jpg>

Ngomeni (German Post Office after 1902)



http://philabild.de/nordphila/bilder/mittel_900/0119142.jpg

<https://encrypted-tbn0.gstatic.com/images?q=tbn:ANd9GcSU0lwa9n6w8sCaKB9Rp4bOir-0Ydpc0O8dtZXzeOP9FnB3H8v0>



[http://www.delcampe.net/items?catLists\[0\]=2678&language=G&searchOptionForm\[searchTldCountry\]=net&searchString=&page=3&useAsDefault=](http://www.delcampe.net/items?catLists[0]=2678&language=G&searchOptionForm[searchTldCountry]=net&searchString=&page=3&useAsDefault=)



<https://d2s03hrlw8s2zb.cloudfront.net/modules/auctions/22/pics/big/d3482d277dd96446e3dd41de472149d42a86f964.jpg>

Usambara (German Post Office since?)



<http://img.collectorcircuit.com/files/dr.reinhard-fischer/stampauction/public-stamps-briefmarken-auction-141/03997.jpg>

<http://img.collectorcircuit.com/files/dr.reinhard-fischer/stampauction/public-stamps-briefmarken-auction-141/03853.jpg>



<http://img.collectorcircuit.com/files/dr.reinhard-fischer/stampauction/public-stamps-briefmarken-auction-135/04076.jpg>

Pwani Region



Current administrative structure: Bagamoyo District Council, Kibaha District Council, Kibaha Town Council, Kisarawe District Council, Mafia District Council

Bagamoyo (German Post Office from 4/10/1890 onwards)



www.stampcircuit.com



<http://img.collectorcircuit.com/files/dr.reinhard-fischer/stampauction/public-stamps-briefmarken-auction-135/03980.jpg>



[http://www.kut-stamps.com/Postmarks/Tanganyika_KGV/KUT%20650\(1\).jpg](http://www.kut-stamps.com/Postmarks/Tanganyika_KGV/KUT%20650(1).jpg)

Sa(a)dani (German Post Office after 25/5/1892)



<http://www.germanpostalhistory.com/inventory/thumbnails/76635t.jpg>



<http://www.germanpostalhistory.com/php/ImageServer.php?image=78811.jpg>



<http://img.collectorcircuit.com/files/guillermo-jalil-philatino/stampauction/auction-110-anisio-stock-part-i/34501-01.jpg>



<http://www.germanpostalhistory.com/php/viewitem.php?itemid=68118&germany%20cover=search>
&

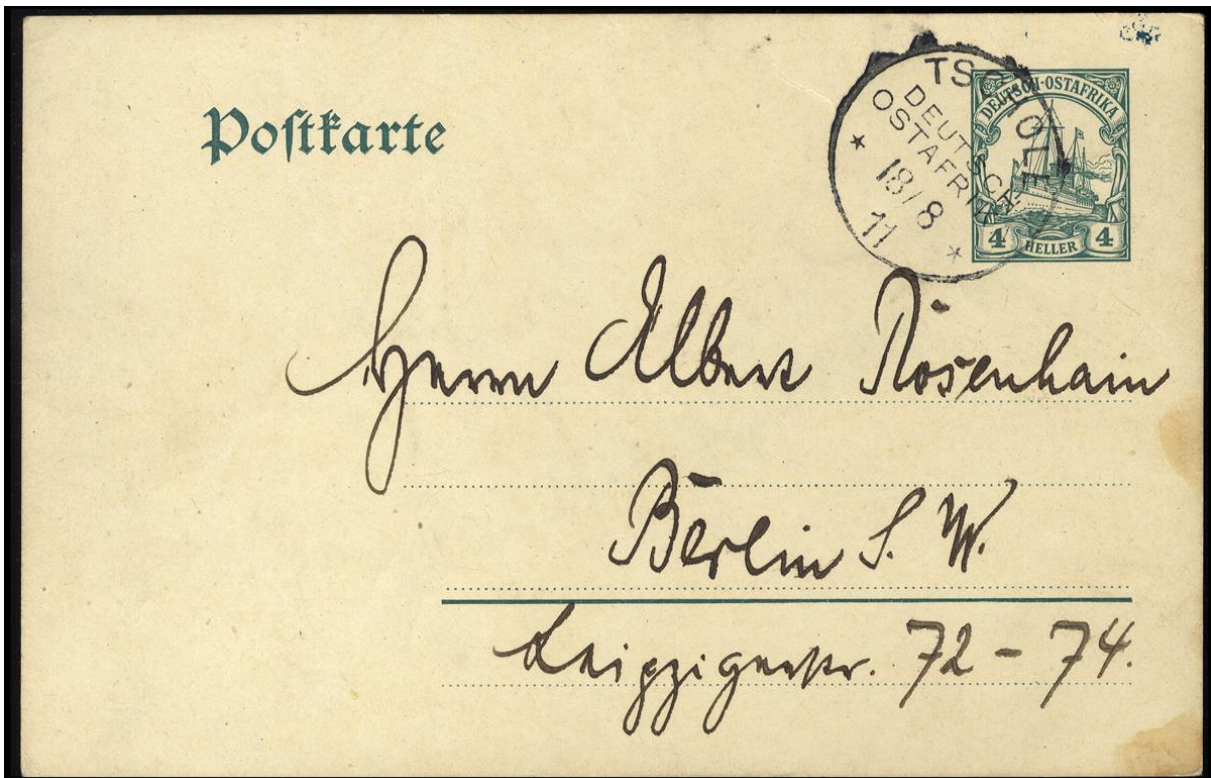


<https://d2s03hrlw8s2zb.cloudfront.net/modules/auctions/23/pics/medium/cc13b693384a1405990286ad4604fd4f70db4534.jpg>

Mafia, German Post Office in Tschole after 1902



[http://www.germanpostalhistory.com/php/viewitem.php?itemid=69499&germany%20cover=search
&](http://www.germanpostalhistory.com/php/viewitem.php?itemid=69499&germany%20cover=search&)



<https://www.cherrystoneauctions.com/auctionscans201012/41.jpg>

Mafia, German post office



<http://www.cherrystoneauctions.com/auctionscans201012/145.jpg>

Mafia, British Occupation in 1915



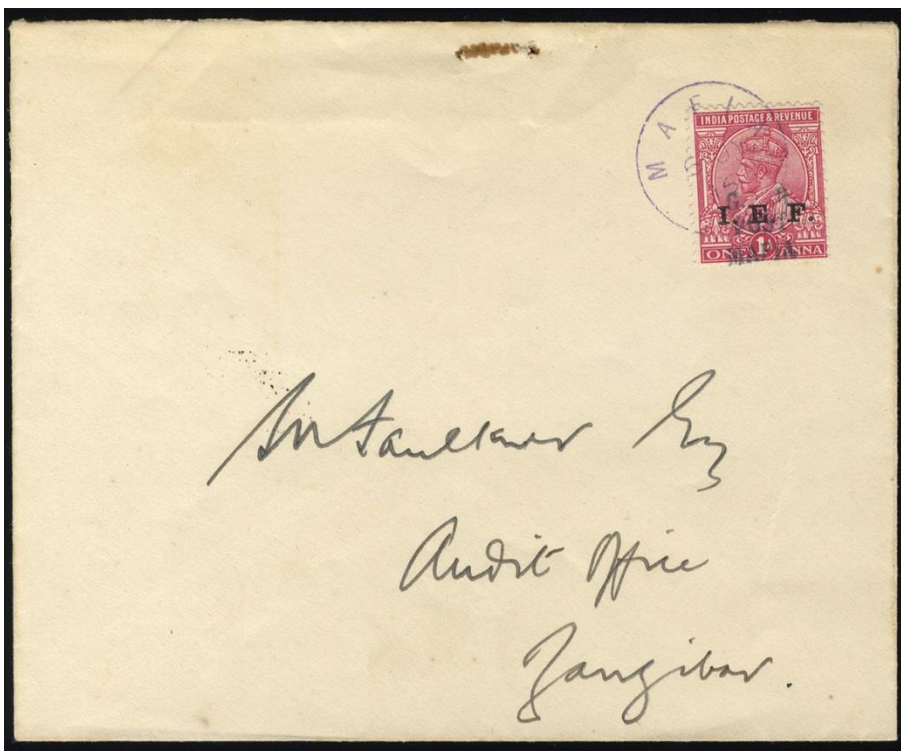
<http://www.cherrystoneauctions.com/auctionscans201012/140.jpg>

<http://www.cherrystoneauctions.com/auctionscans201012/141.jpg>

http://www.kelleherauctions.com/lotphotos_SAN/639/343771.jpg



<https://d1stvyu4yvf2jr.cloudfront.net/modules/auctions/14/pics/big/0fb0e44ce0fe97a2ea91cbcb19856da24d92ceab.jpg>



<http://www.cherrystoneauctions.com/auctionscans201012/148.jpg>



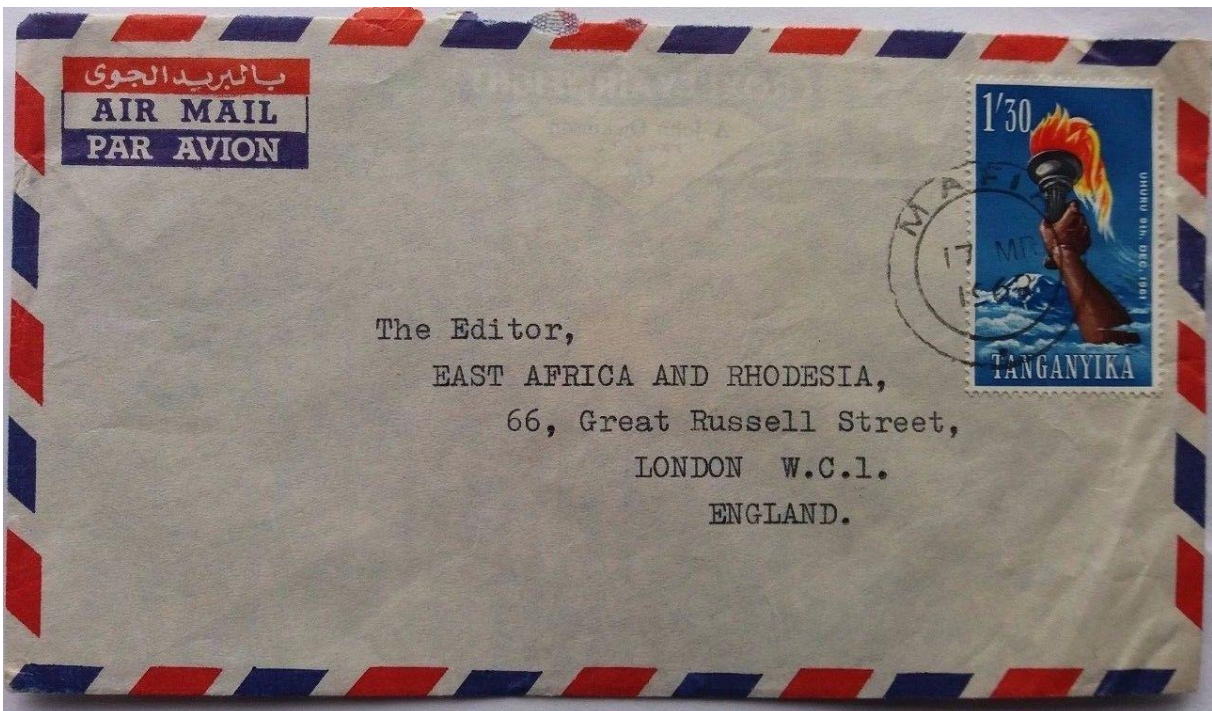
Ebay, no further details



<https://s-media-cache-ak0.pinimg.com/236x/fb/be/a0/fbba00a8157ddd8b47b44887642f096.jpg>



Ebay, no further details



<http://i.ebayimg.com/images/g/GwcAAOSw42dZFDWk/s-l1600.jpg>

- Mkuranga District Council
- Rufiji District Council

Muhoro/Moho(r)ro-Rufiji (German Post Office since 1/2/1894)



<http://www.delcampe.net/items?catLists%5B0%5D=2678&language=G&searchOptionForm%5BsearchTldCountry%5D=net>

Salale (German Post Office, near Rufiji, opposite Mafia Island, after 1902)



<https://d2s03hrlw8s2zb.cloudfront.net/modules/auctions/22/pics/big/b19c4deef100a055622cdb0b5120d3cb21d42530.jpg>

Dar es Salaam Region

Current Administrative structure: Ilala Municipal Council, Kinondoni Municipal Council, Temeke Municipal Council, Kigamboni Municipal Council, Ubungu Municipal Council



<http://coastalforests.tfcg.org/images/map-dar.gif>

Dar es Salaam (German Post Office after 4/10/1890)



<http://www.bdph.de/forum/attachment.php?attachmentid=14586&d=1252691317>



<http://www.bdph.de/forum/showthread.php?9957-Pfennige-Pfennig-Krone-Adler-als-Zwischenstegpaare-auf-Ganzst%FCck>



<https://www.briefmarken-sieger.de/media/catalog/product/cache/1/image/700x700/9df78eab33525d08d6e5fb8d27136e95/9/1/917446.jpg>



<https://www.cherrystoneauctions.com/auctionscans200811/1695.jpg>



<http://www.cherrystoneauctions.com/auctionscans201012/22.jpg>



<https://s-media-cache-ak0.pinning.com/564x/12/65/b5/1265b55ca7c3840dabb89ef8b609c8f9.jpg>



<http://www.kut-stamps.com/Tanganyika Postmarks and Covers/DAR-ES-SALAAM.jpg>



[http://i.ebayimg.com/00/s/MTM2MFgxNjAw/z/x2MAAOSwuTxWCFIX/\\$ 57.JPG](http://i.ebayimg.com/00/s/MTM2MFgxNjAw/z/x2MAAOSwuTxWCFIX/$ 57.JPG)



<http://i.ebayimg.com/00/s/MTA1MVgxNjAw/z/KKgAAOSwzOxUYF8~/57.JPG>



<http://i.ebayimg.com/00/s/NzYzWDE2MDA=/z/trUAAOSwX61ZBKWk/57.JPG>



[http://www.kut-stamps.com/Postmarks/TPO/DARESSALAAM_TABORA_TPO_DOWN\(1\).jpg](http://www.kut-stamps.com/Postmarks/TPO/DARESSALAAM_TABORA_TPO_DOWN(1).jpg): Dar es Salaam Travelling Post Office



<http://i.ebayimg.com/images/g/e6YAAOSwvg9XYKqG/s-l300.jpg>

Mingoyo (Saw Mills, near Dar es Salaam)



https://www.picclickimg.com/d/l400/pict/381792548524_/Kenya-uganda-tanganyika-Postmark-Mingoyo.jpg

Soga (German Post Office after 1902)



[http://www.germanpostalhistory.com/php/viewitem.php?itemid=69485&germany%20cover=search
&](http://www.germanpostalhistory.com/php/viewitem.php?itemid=69485&germany%20cover=search&)

Utete (German Post Office after 1902)



[http://www.delcampe.net/items?catLists\[0\]=2678&language=G&searchOptionForm\[searchTldCountry\]=net&searchString=&page=3&useAsDefault=](http://www.delcampe.net/items?catLists[0]=2678&language=G&searchOptionForm[searchTldCountry]=net&searchString=&page=3&useAsDefault=)



<https://www.cherrystoneauctions.com/auctionscans201012/44.jpg>

Paquebot postmarks



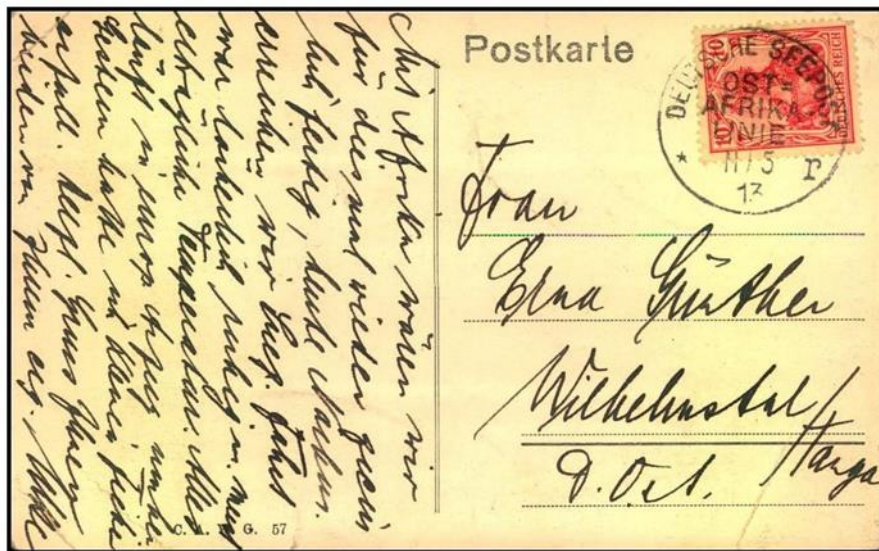
http://www.kut-stamps.com/Tanganyika_Postmarks_and_Covers/PAQUEBOT.jpg

Deutsche Marineschiffe



<http://www.germanpostalhistory.com/php/viewitem.php?itemid=69042&germany%20cover=search&#littlepic0>: "Bussard Shot Hippo PPC East Africa Deutsche Ostafrika DOA Feldpost Cover" (6/11/1909)

Deutsche Seepost Ostafrikalinie



<http://www.delcampe.net/items?catLists%5B0%5D=2678&language=G&searchOptionForm%5BsearchTldCoun%5D=net>



<http://img.collectorcircuit.com/files/gert-mueller-auktion/stampauction/public-auction-80/b04127.jpg>



<http://pictures.philasearch.com/A09097/S20/5991.jpg>



<https://s-media-cache-ak0.pinimg.com/736x/90/d5/19/90d5191274b05b26a07ae410f51fbd88.jpg>

Deutsche Seepost Bombay Linie

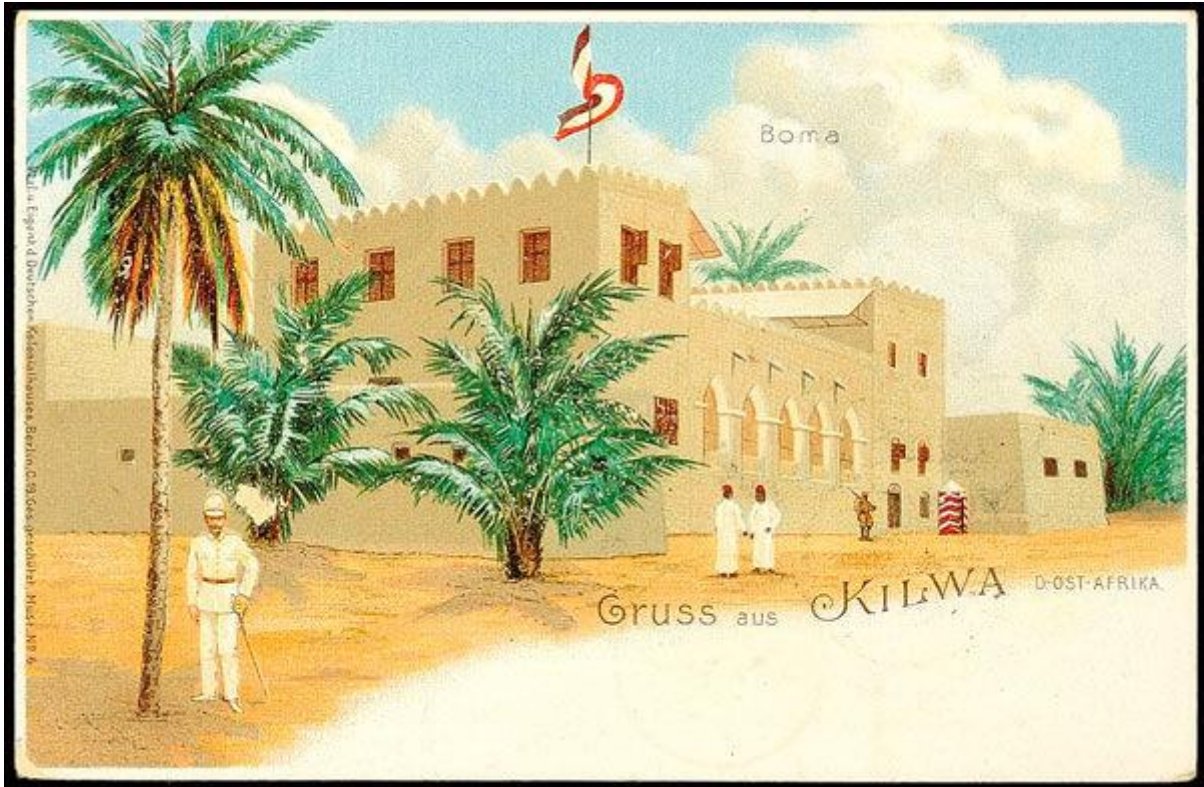


<https://d2s03hrlw8s2zb.cloudfront.net/modules/auctions/20/pics/medium/91e2f820a362074eb75cf9bb60186fcbee6a0eee.jpg>: ""DSP BOMBAY-LINIE c 8.12.05" (D. Reichstag), recht klar auf Drucksachenumschlag mit Kaiseryacht 2 1/2 H. und violetter L2 "Deutsches Schutzgebiet" via Zanzibar nach Lamu, Umschlag etwas verschmutzt und kleiner Eckbug, seltener Stempel".

Lindi Region

Kilwa District Council, Lindi District Council, Lindi Municipal Council, Liwale District Council, Nachingwea District Council, Ruangwa District Council

Kilwa (German Post Office from 14/4/1892 onwards)



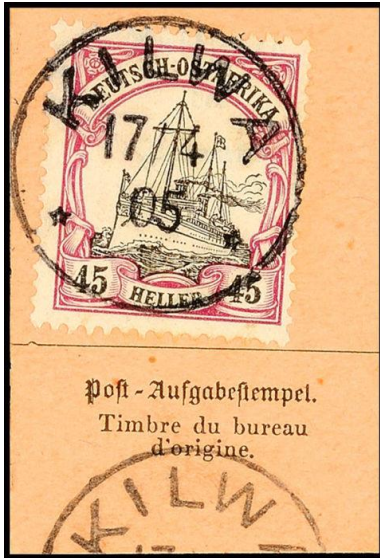
<http://img.collectorcircuit.com/files/dr.reinhard-fischer/stampauction/public-stamps-briefmarken-auction-135/04023.jpg>



www.stampcircuit.com



<http://www.ebay.de/itm/DOA-Deutsch-Ostafrika-Vorlaueferkarte-VP-25-Kilwa-selten-/121554779328>



<http://img.collectorcircuit.com/files/dr.reinhard-fischer/stampauction/public-stamps-briefmarken-auction-135/03994.jpg>



<http://www.germanpostalhistory.com/php/viewitem.php?itemid=69487&germany%20cover=search&>

http://philabild.de/nordphila/bilder/mittel_900/0119119.jpg

Kilwa Masoko



https://www.picclickimg.com/d/l400/pict/381763759906_/Kenya-uganda-tanganyika-Postmark-Kilwa-Masoko.jpg

Lindi (German Post Office from 17/5/1891 onwards)



www.stampcircuit.com



https://upload.wikimedia.org/wikipedia/commons/2/2c/Stamp_German_East_Africa_1900_5p.jpg



http://www.kut-stamps.com/Tanganyika_Postmarks_and_Covers/LINDI.jpg



www.postmarks.co.za



www.postmarks.co.za

Mtwara Region

Current administrative structure: Masasi District Council, Masasi Town Council, Mtwara District Council, Mtwara Municipal Council, Nanyumbu District Council, Newala District Council, Tandahimba District Council

(Mi)kindani (German Post Office after 30/10/1894)



[http://www.delcampe.net/items?catLists\[0\]=2678&language=G&searchOptionForm\[searchTldCountry\]=net&searchString=&page=2&useAsDefault=](http://www.delcampe.net/items?catLists[0]=2678&language=G&searchOptionForm[searchTldCountry]=net&searchString=&page=2&useAsDefault=)

http://www.germanpostalhistory.com/php/searchviewpage.php?country_spec=Political.Germany.Colonies.East%20Africa&pagenum=3&orderby=5&v

<http://www.germanpostalhistory.com/php/viewitem.php?itemid=69474&germany%20cover=search&>



<http://www.germanpostalhistory.com/inventory/thumbnails/76638t.jpg>
